

# GIOTINE TYPE DISHWASHER -DOUBLE SKIN

## CONTENTS

---

<b>A</b>	<b>GENERAL INFORMATION .....</b>	<b>Page 2</b>
A1	PRODUCT DESCRIPTION .....	Page 3
A2	TECHNICAL INFORMATION .....	Page 3
A3	TRANSPORTATION .....	Page 4
A4	UNPACKING .....	Page 4
<b>B</b>	<b>INSTALLATION .....</b>	<b>Page 4</b>
<b>C</b>	<b>SAFETY INSTRUCTIONS .....</b>	<b>Page 5</b>
<b>D</b>	<b>OPERATION .....</b>	<b>Page 6</b>
<b>E</b>	<b>CLEANING &amp; MAINTENANCE.....</b>	<b>Page 9</b>
<b>F</b>	<b>TROUBLESHOOTING .....</b>	<b>Page 10</b>
<b>G</b>	<b>SPARE PART LIST- EXPLODING DRAWING .....</b>	<b>Page 11</b>
<b>H</b>	<b>ELECTRIC CIRCUIT SCHEMA .....</b>	<b>Page 20</b>

## A GENERAL INFORMATION

---

Before installing the appliance, read operation and maintenance instructions carefully. Wrong installation and part changing may damage the product or may cause injury on people. These are not in our company's responsibility to damage the appliance intentionally, negligence, detriments because of disobeying instructions and regulations, wrong connections. Unauthorized intervention to appliance invalidates the warranty.

1. This instruction manual should be kept in a safe place for future reference.
2. **Installation should be made in accordance with ordinances and security rules of that country by a qualified service personnel.**
3. This appliance has to be used by trained person.
4. Please turn off the appliance immediately in the event of malfunction or failure. The appliance should be repaired only by authorized service personnel. Please demand original spare part.

# GIOTINE TYPE DISHWASHER -DOUBLE SKIN

## A1 PRODUCT DESCRIPTION

\*The Professional Undercounter Type Dishwasher ,that provides high efficiency has been designed to be used in industrial kitchens.

Product Code	Dimensions (mm)	Weight (kg)	Packaging Dimensions (mm)
EMP.1000-D	720x840x1570	150	800x870x1570
EMP.1000-SD	696x765x1485	112	800x870x1570
EMP.1000-SDF	696x765x1485	112	800x870x1570

## A2 TECHNICAL INFORMATION

Product Code	EMP.1000-D	EMP.1000-SD	EMP.1000-SDF
Capacity (Plate/ hour)	1000	1000	1000
Water Consumption (Lt/Piece.)	2.5	2.5	2.5
Total Power (KW)	9	9	9
Motor Power (KW)	0,55	0,55	0,55
Operating Voltage (V)	380	380	380
Water Pressure ( bar )	2-4	2-4	2-4
Washing Tank Power (KW)	2,5	2,5	2,5
Rinsing Tank Power (KW)	6	6	6
Max Power During Operation (KW)	6,55	6,55	6,55
Cable (mm <sup>2</sup> )	5x4	5x4	5x4
Fuse (A)	32	32	32
Max.Plate Diameter (Ø)	Ø320	Ø320	Ø320
Program Number (°C)	4	4	4

EMP.1000-D	Double Walled Body
EMP.1000-SD	Standard Digital
EMP.1000-SDF	Standard Digital

## GIOTINE TYPE DISHWASHER -DOUBLE SKIN

### **A3      TRANSPORTATION**

---

\*This appliance can not be moved by hand from area to area.It must be moved on pallet with forklift truck.

### **A4      UNPACKING**

---

\*Please unpack the package according to the security codes and ordinances of current country and get rid from the pack.Parts which contacts with food are produced by stainless steel.All plastic parts are marked by material's symbol.

\*Please check that all the parts of appliance had come completely and if they are damaged or not during the shippin.

### **B        INSTALLATION**

---

\*Please place the product to straight and sturdy ground,please take necessary steps against possibility of overturn.

\*Technician who will serve for installation and service for the appliance must be professional on this subject and must have installation and service licenses by the company.

\*Connection to Electric Power Supply must be done by authorized person.

\*Please be sure that the voltage connected to appliance must be equal with the voltage which is on appliance's label.



This appliance must be connected to an earthed outlet in accordance with safety rules and standards.










\*Appliance's earthing must be connected to earthing line on panel which is nearest to electric installation.

\*Connection to the main fuse and leak current fuse must be done in accordance with the current regulations.

## GUOTINE TYPE DISHWASHER -DOUBLE SKIN

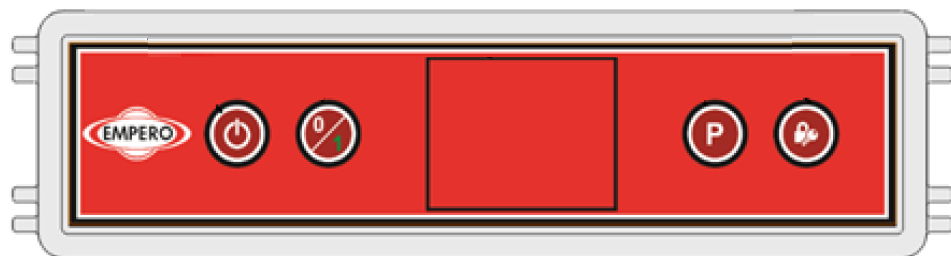
### C SAFETY INSTRUCTIONS

---

-  \*Do not use the appliance in insufficient lighted place.
-  \*Do not touch the moving attachments while the appliance operates.
-  \*Do not install the appliance in the presence of flammable or explosive materials.
-  \*Do not operate the appliance when the machine is empty.
-  \*Do not load so less or more than appliance's capacity.
-  \*Do not attempt to use the appliance without suitable protective equipments.
-  \*Because of any reason if there is a fire or flame flare where the appliance is used,turn off all gas valves and electric contactor switch quickly and use fire extinguisher .Never use water to extinguish the fire.
-  \*All the damages because of not having earthing connection will not be on warranty.
-  \*Do not wash the decorated dishes.Prevent silver wares to contact with the other metals.







## D OPERATION

\*Control Panel;



	<b>ON/OFF:</b> While the device is energized, the on / off button is pressed and the device is switched on or off.
	<b>START-STOP:</b> The washing process starts or stops by touching the start / stop button while the device is switched on. If the start-stop button is held down for a long time, you can switch between automatic and manual position.
	<b>KEYLOCK:</b> The key lock is activated or disabled by holding down the button. When the key lock is activated, the button lighting comes on and all keys are locked against operation. Key lock is active when the device is first energized.
	<b>PROGRAM:</b> Allows switching between programs. Washing programs, evacuation process or machine internal washing process are selected by touching the program key

## GIOTINE TYPE DISHWASHER -DOUBLE SKIN











	Automatic washing mode enabled
	Cover open
	Cover closed
	The machine is in standby
	Washing is in progress
	Rinsing is in progress.

### TOUCHSCREEN WARNINGS

- When the machine is energized, you should not be touched any buttons until the On / Off button lights up.
- The types of touches are given below.



## GIOTINE TYPE DISHWASHER -DOUBLE SKIN

	The washing process is over.
	60 sec. wash program selected
	90 sec. wash program selected
	120 sec. wash program selected
	Evacuation program selected
	Machine internal washing program
	The water level is missing. During this process, does water intake automatically.
	
	Automatic washing mode is enabled. When the cover is closed, the machine starts the washing process.
	Washing process completion indicator.



## GIOTINE TYPE DISHWASHER -DOUBLE SKIN

### **E      CLEANING & MAINTENANCE**

---

#### ➤ **CLEANING AND MAINTENANCE AFTER EVERY USE**

- Always turn off the appliance and disconnect from the power supply before cleaning.
- Clean all surfaces of the appliance with hot soapy water after every use. Rinse and dry with a wet cloth.
- Clean the control panel with soft moisty cloth, if necessary use ineffective detergent.
- Do not use abrasive cleaning chemicals as these can leave harmful residues.
- Do not clean the appliance by spraying water directly, otherwise electric motor may get damaged.

#### ➤ **PERIODIC CLEANING AND MAINTENANCE**

- Maintenance should be done by qualified person.
- Clean the limes of the burner, inner surface of the washing tank and water pipes once or twice in a year.
- Clean the limes with using rinsing and washing nozzles once in a month by using vinegar or lime remover.
- Clean the filters in the appliance once in a week. After cleaning be sure that thumbscrew is compressed.
- Clean the appliance's fountains once in 15 days by detaching it.
- Clean the appliance's evacuation stopple and evacuation hoses once in 15 days.

# GIOTINE TYPE DISHWASHER -DOUBLE SKIN

## F TROUBLESHOOTING

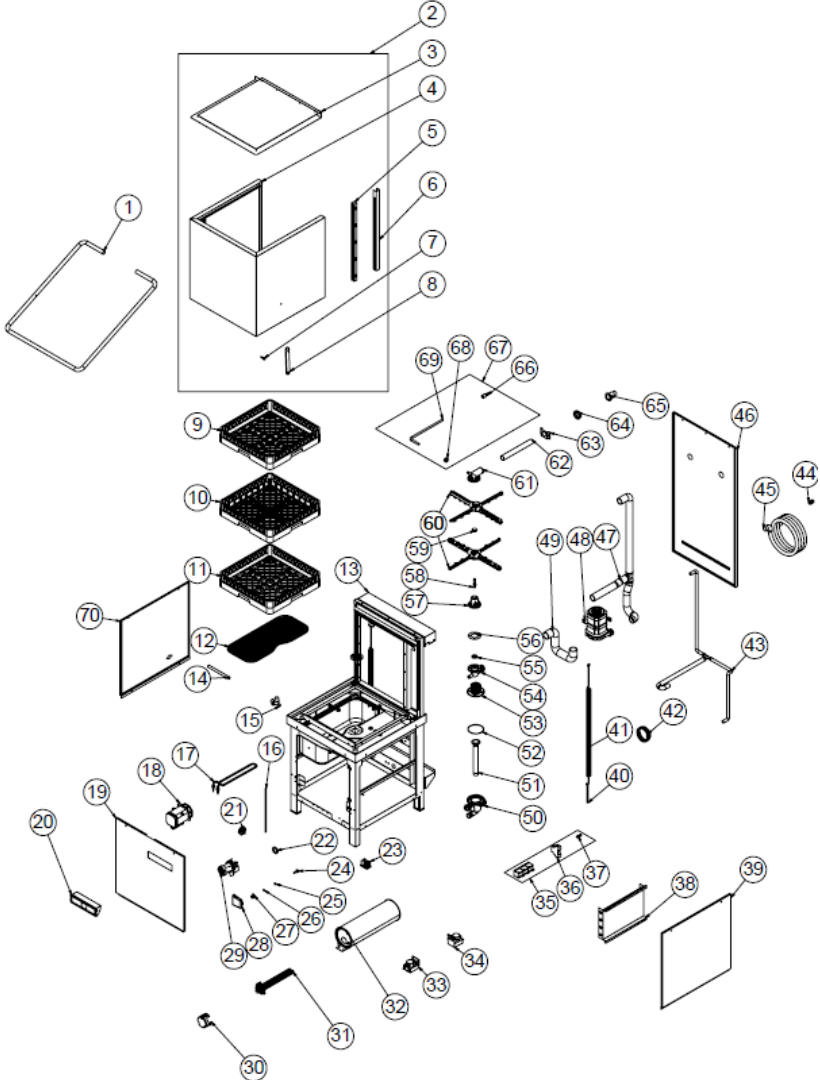
<b>THE APPLIANCE DOESN'T WASH WELL</b>	<ol style="list-style-type: none"> <li>1. Clean the absorbing filter if it is dirty.</li> <li>2. Check the washing nozzles if they are accumulated with residues or not.</li> <li>3. Check the amount of detergent.</li> <li>4. If chosen washing program is too less,repeat the program.</li> <li>5. Check if the plates are placed to the baskets correctly.</li> </ol>
<b>CUPS AND PLATES ARE NOT DRIED WELL</b>	<ol style="list-style-type: none"> <li>1. If there is polisher or not,if not add some.</li> <li>2. Check the amount of polisher.</li> </ol>
<b>MIST OVER ON CUPS</b>	<ol style="list-style-type: none"> <li>1. After washing process ,take off the cups from baskets.</li> </ol>
<b>CORROSION ON CUPS</b>	<ol style="list-style-type: none"> <li>1. Only use products that are not foaming for the professional dishwashers.</li> </ol>
<b>MUCH FOAM AT STORAGE</b>	<ol style="list-style-type: none"> <li>1. Check the amount of detergent .</li> <li>2. If foaming detergent is used,pour it and rinse the storage till the foams are lost.</li> <li>3. Do not wash with cold water, wait for the warmed lamp</li> </ol>
<b>WASHING OR RINSING HANDLES ARE TURNING SLOWLY</b>	<ol style="list-style-type: none"> <li>1. Take off washing handles and clean them.</li> <li>2. Clean the washing pump absorbing filter.</li> <li>3. Check the rinse water pressure</li> </ol>
<b>VISCIDITY AND SPOTS ON CUPS</b>	<ol style="list-style-type: none"> <li>1. Reduce the amount of polisher.</li> </ol>

- If dishwashing is not done at suitable quality
- If any function of security doesn't work
  - Do not use the appliance.

**\*If these problems are still going on,contact with our authorized services.**

# GIOTINE TYPE DISHWASHER -DOUBLE SKIN

## G SPARE PART LIST-EXPLODING DRAWING



EMP.1000-D

**GIOTINE TYPE DISHWASHER -DOUBLE SKIN****G SPARE PARTS LIST-EXPLODED VIEW**

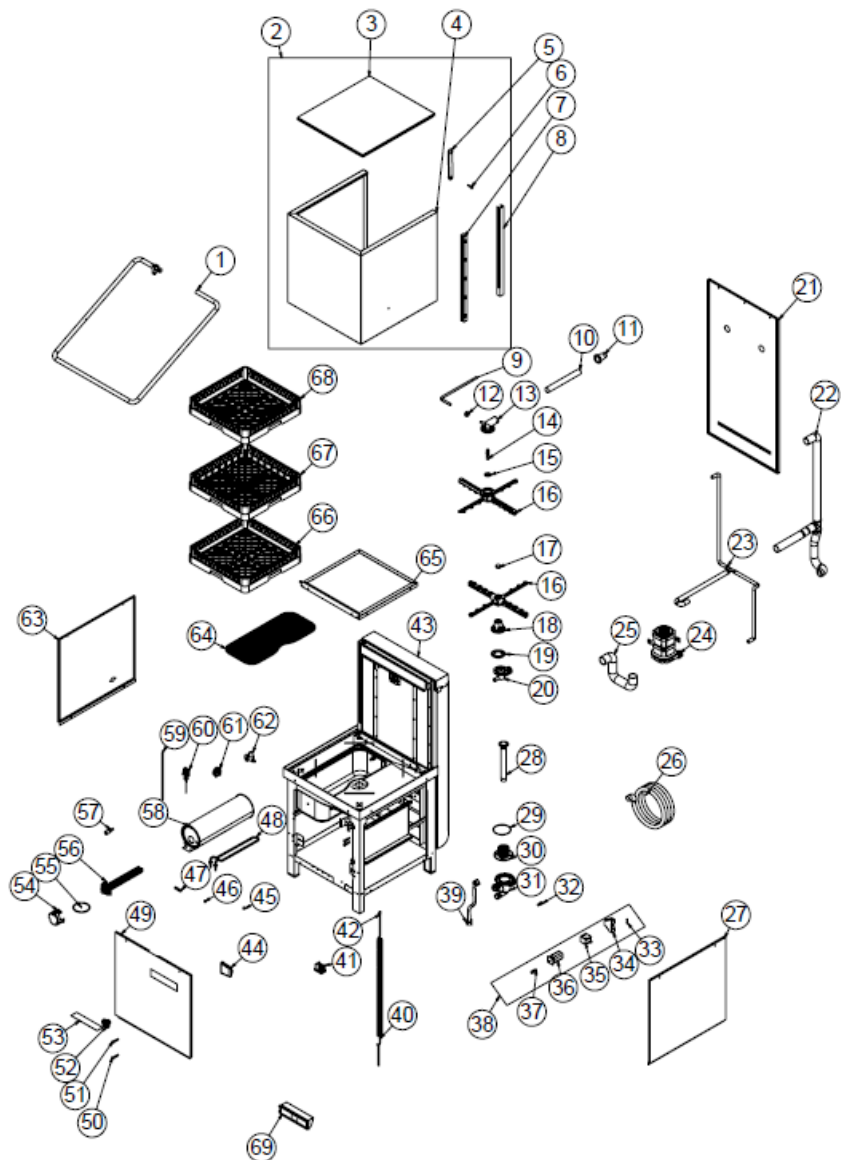
<b>PRODUCT CODE : EMP.1000-D</b>		
<b>NO</b>	<b>PRODUCT NAME</b>	<b>PRODUCT CODE</b>
1	PIPE	YBR-ERS.BYM-KS-0026
2	TOP COVER	ARA-ERS.BYM-0023
3	TOP SHEET	YSC-ERS.BYM-LZ-0479
4	TOP COVER SHEET	YSC-ERS.BYM-PN-0360
5	TOP COVER SLIDE	M.ENJ-ERS-PLS-BYM-075
6	SLIDE SHEET	M.MTS-ERS-BYM-009
7	CONNECTION SCREW	YTL-ERS.BYM-KS-0069
8	MOTION ARM PLASTIC	M.ENJ-ERS-PLS-BYM-098
9	GLASS BASKET	EMP.BB.01
10	SPOON FORK BASKET	EMP.KC.01
11	PLATE BASKET	EMP.TB.01
12	FILTER PLASTIC	M.ENJ-ERS-PLS-BYM-116
13	CHASSIS	-
14	VALVE HOSE	M.MEK-TES-HRT-032
15	VALVE (14 LT)	M.ELK-SLN-PLS-001
16	PROCESTAT HOSE	HTS-HRT-008
17	TANK RESISTANCE 230V-2500W	M.ELK-RZS-BRU-BYM-028
18	WATER PUMP	M.ELK-MTR-PMP-005
19	FRONT SHEET	YSC-ERS.BYM-PN-0352
20	DIGITAL PANEL GROUP	M.ELK-EDM-DGT-049
21	PROCESTAT FLOAT	M.ELK-MUH-001
22	evacuation rubber	M.ENJ-ERS-LST-040
23	ROLLER FOOT	ERS.M.AKS-AYK-PLS-005
24	AIR TRAP SHAFT	YTL-ERS.BYM-KS-0002
25	ORING	M.CNT-ORG-002
26	ORING	M.CNT-ORG-003
27	AIR TRAP LOCATION	M.ENJ-ERS-PLS-BYM-015
28	AIR TRAP	M.ENJ-ERS-PLS-BYM-019
29	DRAIN PUMP	M.ELK-MTR-PMP-002
30	RESISTANCE COVER	M.ENJ-ERS-PLS-BYM-028
31	BOILER RESISTANCE 380V-6000W	M.ELK-RZS-BRU-BYM-029
32	BOILER TANK	M.MEK-TES-BYM-BYL-002
33	DETERGENT PUMP	M.ELK-MTR-PMP-006
34	POLISHING PUMP	M.ELK-MTR-PMP-007

## GIOTINE TYPE DISHWASHER -DOUBLE SKIN

35	DIGITAL PANEL GROUP	M.ELK-EDM-DGT-049
36	LC1D18M7 CONTACTOR	ERS.M.ELK-KNT-KNT-023
37	MAGNETIC SENSOR WITHOUT LED	M.ELK-SWC-KTG-004
38	PANEL SHEET	YSC-ERK.KD-LZ-0048
39	RIGHT SIDE SHEET	YSC-ERS.BYM-PN-0244
40	SPRING STRING	ERS.M.MUH-042
41	COVER SPRING	M.YAY-ERS-038
42	HOSE Ø6	HTS-HRT-005
43	SPRAY DISTRIBUTION HOSE	M.MEK-TES-HRT-039
44	PG-21 CABLE FITTING	ERS.M.ELK-RKR-PLS-008
45	WASTE WATER HOSE	M.MEK-TES-HRT-034
46	BACK COVER SHEET	YSC-ERS.BYM-PN-0230
47	WASHING HOSE	ERS.M.MEK-TES-HRT-009
48	WASHING MOTOR	M.ELK-MTR-PMP-001
49	ENGINE BOILER CONNECTION HOSE	M.MEK-TES-HRT-080
50	FILTER BODY+AIR TRAP	M.ENJ-ERS-PLS-BYM-088
51	DRAIN WEDGE	M.ENJ-ERS-PLS-BYM-115
52	GASKET	M.CNT-ERS-031
53	FILTER COVER	M.ENJ-ERS-PLS-BYM-086
54	HOSE LOWER ELBOW	M.ENJ-ERS-PLS-BYM-096
55	PRESSURE PLASTIC	M.ENJ-ERS-PLS-BYM-059
56	SPRAY GASKET	M.ENJ-ERS-LST-019
57	LOWER FOUNTAIN CENTER	M.ENJ-ERS-PLS-BYM-027
58	SPINNING SPINDLE	YTL-ERS.BYM-KS-0001
59	SPRAY SCREW	M.ENJ-ERS-PLS-BYM-070
60	FOUNTAIN	M.ENJ-ERS-PLS-BYM-053
61	HOSE UPPER ELBOW	M.ENJ-ERS-PLS-BYM-021
62	UPPER SPRAY PIPE	YBR-ERS.BYM-KS-0022
63	PIPE CONNECTION SHEET	YSC-ERS.BYM-LZ-0168
64	WEDGE NUT	M.ENJ-ERS-PLS-BYM-012
65	WEDGE LOCATION	M.ENJ-ERS-PLS-BYM-011
66	ARM CONNECTION	YTL-ERS.BYM-KS-0028
67	RINSE PIPE	ARA-ERS.BYM-0028
68	CONEXION NUT	YTL-ERS.BYM-KS-0030
69	RINSE PIPE	YBR-ERS.BYM-KS-0021
70	LEFT SIDE SHEET	YSC-ERS.BYM-PN-0243

# GIOTINE TYPE DISHWASHER -DOUBLE SKIN

## G SPARE PARTS LIST-EXPLODED VIEW



# GIOTINE TYPE DISHWASHER -DOUBLE SKIN

## G SPARE PARTS LIST-EXPLODED VIEW

PRODUCT CODE : EMP.1000-SD		
NO	PRODUCT NAME	PRODUCT CODE
1	PIPE	YBR-ERS.BYM-KS-0026
2	COVER	ARA-ERS.BYM-0015
3	COVER TOP SHEET	YSC-ERS.BYM-PN-0249
4	TOP COVER SHEET	YSC-ERS.BYM-PN-0250
5	MOTION ARM PLASTIC	M.ENJ-ERS-PLS-BYM-098
6	CONNECTION SCREW	YTL-ERS.BYM-KS-0069
7	TOP COVER SLIDE	M.ENJ-ERS-PLS-BYM-075
8	SLIDE SHEET	M.MTS-ERS-BYM-009
9	RINSE PIPE	YBR-ERS.BYM-KS-0021
10	UPPER SPRAY PIPE	YBR-ERS.BYM-KS-0022
11	WEDGE LOCATION	M.ENJ-ERS-PLS-BYM-011
12	CONEXION NUT	YTL-ERS.BYM-KS-0030
13	HOSE UPPER ELBOW	M.ENJ-ERS-PLS-BYM-021
14	SPINNING SPINDLE	YTL-ERS.BYM-KS-0001
15	PRESSURE PLASTIC	M.ENJ-ERS-PLS-BYM-059
16	FOUNTAIN	M.ENJ-ERS-PLS-BYM-053
17	SPRAY SCREW	M.ENJ-ERS-PLS-BYM-070
18	LOWER FOUNTAIN CENTER	M.ENJ-ERS-PLS-BYM-027
19	SPRAY GASKET	M.ENJ-ERS-LST-019
20	HOSE LOWER ELBOW	M.ENJ-ERS-PLS-BYM-096
21	BACK COVER SHEET	YSC-ERS.BYM-PN-0230
22	WASHING HOSE	ERS.M.MEK-TES-HRT-009
23	SPRAY DISTRIBUTION HOSE	M.MEK-TES-HRT-039
24	WASHING MOTOR	M.ELK-MTR-PMP-001
25	ENGINE BOILER CONNECTION HOSE	M.MEK-TES-HRT-080
26	WASTE WATER HOSE	M.MEK-TES-HRT-034
27	RIGHT SIDE SHEET	YSC-ERS.BYM-PN-0244
28	DRAIN WEDGE	M.ENJ-ERS-PLS-BYM-115
29	GASKET	M.CNT-ERS-031
30	FILTER COVER	M.ENJ-ERS-PLS-BYM-086
31	FILTER BODY+AIR TRAP	M.ENJ-ERS-PLS-BYM-088
32	DETERGENT ENTRY PLASTIC	M.PLS-ERS-036
33	GLASS FUSE 5A	M.ELK-SGR-011
34	WASH TIME RELAY	M.ELK-KNT-ROL-020

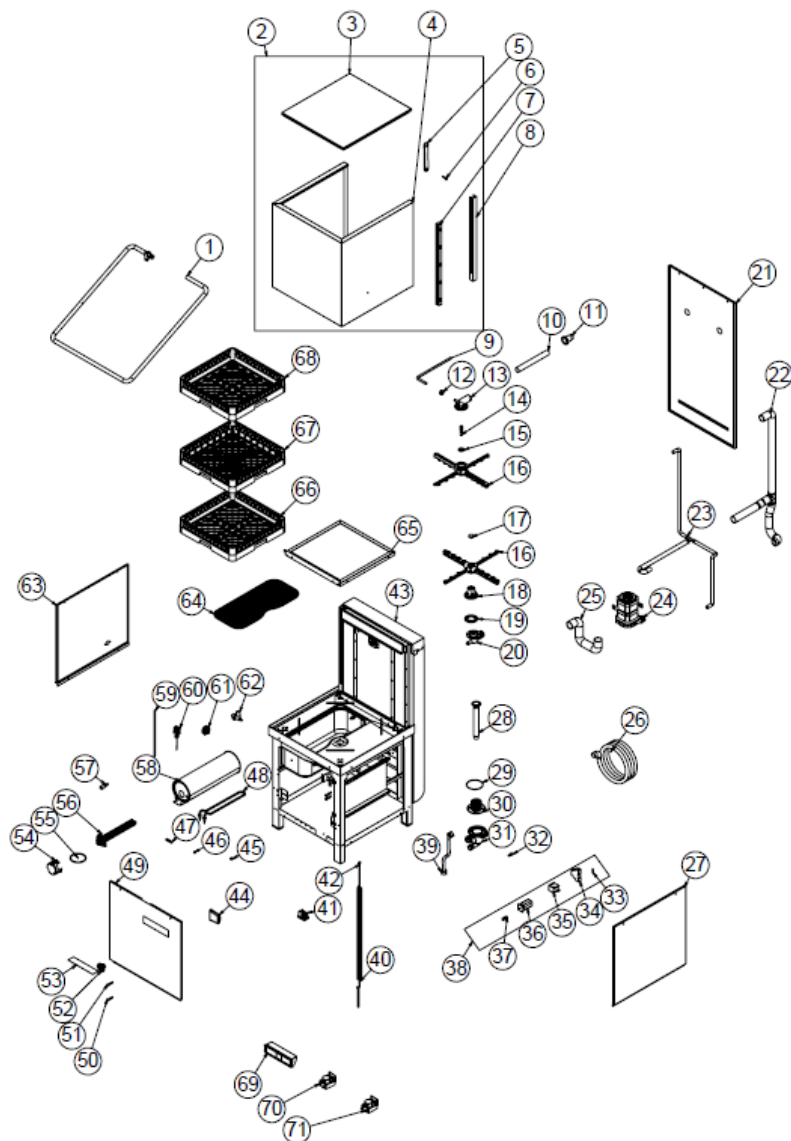
## GIOTINE TYPE DISHWASHER -DOUBLE SKIN

35	LC1K0901M7 CONTACTOR	ERS.M.ELK-KNT-KNT-020
36	SWITCH	M.ELK-SLT-PKO-014
37	HORIZONTAL SENSOR	M.ELK-SWC-KTG-005
38	DIGITAL PANEL GROUP	M.ELK-EDM-DGT-049
39	HOSE 150CM	ERS.M.MEK-TES-HRT-011
40	TOP COVER SPRING	M.YAY-ERS-041
41	ROLLER FOOT	ERS.M.AKS-AYK-PLS-005
42	SPRING STRING	ERS.M.MUH-042
43	CHASSIS	-
44	AIR TRAP	M.ENJ-ERS-PLS-BYM-019
45	MAGNET	M.MIK-ERS-002
46	ORING	M.CNT-ORG-002
47	INLET PIPE	YBR-ERS.BYM-KS-0001
48	TANK RESISTANCE 230V-2500W	M.ELK-RZS-BRU-BYM-028
49	FRONT SHEET	YSC-ERS.BYM-PN-0352
50	GREEN WARNING LAMP	ERS.M.ELK-LMB-SNY-001
51	YELLOW WARNING LAMP	ERS.M.ELK-LMB-SNY-003
52	SWITCH BUTTON	M.AKS-DGM-MUH-002
53	PANEL LABEL	M.AKS-ETK-LKS-ERS-BYM-013
54	RESISTANCE COVER	M.ENJ-ERS-PLS-BYM-028
55	ORING	M.CNT-ORG-012
56	BOILER RESISTANCE 380V-6000W	M.ELK-RZS-BRU-BYM-029
57	ARM CONNECTION	YTL-ERS.BYM-KS-0028
58	BOILER TANK	M.MEK-TES-BYM-BYL-002
59	PROCESTAT HOSE	HTS-HRT-008
60	THERMOSTAT 0-90°C	M.ELK-MEK-TRM1-008
61	PROCESTAT FLOAT	M.ELK-MUH-001
62	VALVE (14 LT)	M.ELK-SLN-PLS-001
63	LEFT SIDE SHEET	YSC-ERS.BYM-PN-0243
64	FILTER PLASTIC	M.ENJ-ERS-PLS-BYM-116
65	TABLE BODY SHEET	YSC-ERS.BYM-LZ-0307
66	PLATE BASKET	EMP.TB.01
67	GLASS BASKET	EMP.BB.01
68	SPOON FORK BASKET	EMP.KC.01
69	DIGITAL PANEL GROUP	M.ELK-EDM-DGT-049



## GIOTINE TYPE DISHWASHER -DOUBLE SKIN

## G YEDEK PARÇA LİSTESİ-DEMONTE GÖRÜNÜŞÜ



# GIOTINE TYPE DISHWASHER -DOUBLE SKIN

## G YEDEK PARÇA LİSTESİ-DEMONTE GÖRÜNÜŞÜ

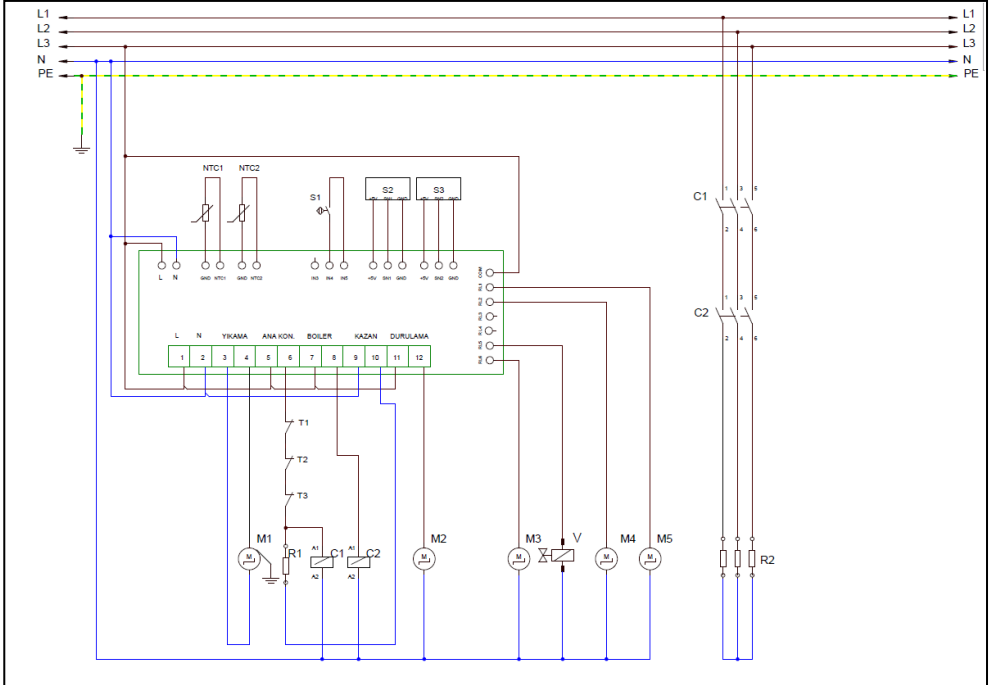
PRODUCT CODE : EMP.1000-SDF		
NO	PRODUCT NAME	PRODUCT CODE
1	PIPE	YBR-ERS.BYM-KS-0026
2	COVER	ARA-ERS.BYM-0015
3	COVER TOP SHEET	YSC-ERS.BYM-PN-0249
4	TOP COVER SHEET	YSC-ERS.BYM-PN-0250
5	MOTION ARM PLASTIC	M.ENJ-ERS-PLS-BYM-098
6	CONNECTION SCREW	YTL-ERS.BYM-KS-0069
7	TOP COVER SLIDE	M.ENJ-ERS-PLS-BYM-075
8	SLIDE SHEET	M.MTS-ERS-BYM-009
9	RINSE PIPE	YBR-ERS.BYM-KS-0021
10	UPPER SPRAY PIPE	YBR-ERS.BYM-KS-0022
11	WEDGE LOCATION	M.ENJ-ERS-PLS-BYM-011
12	CONEXION NUT	YTL-ERS.BYM-KS-0030
13	HOSE UPPER ELBOW	M.ENJ-ERS-PLS-BYM-021
14	SPINNING SPINDLE	YTL-ERS.BYM-KS-0001
15	PRESSURE PLASTIC	M.ENJ-ERS-PLS-BYM-059
16	FOUNTAIN	M.ENJ-ERS-PLS-BYM-053
17	SPRAY SCREW	M.ENJ-ERS-PLS-BYM-070
18	LOWER FOUNTAIN CENTER	M.ENJ-ERS-PLS-BYM-027
19	SPRAY GASKET	M.ENJ-ERS-LST-019
20	HOSE LOWER ELBOW	M.ENJ-ERS-PLS-BYM-096
21	BACK COVER SHEET	YSC-ERS.BYM-PN-0230
22	WASHING HOSE	ERS.M.MEK-TES-HRT-009
23	SPRAY DISTRIBUTION HOSE	M.MEK-TES-HRT-039
24	WASHING MOTOR	M.ELK-MTR-PMP-001
25	ENGINE BOILER CONNECTION HOSE	M.MEK-TES-HRT-080
26	WASTE WATER HOSE	M.MEK-TES-HRT-034
27	RIGHT SIDE SHEET	YSC-ERS.BYM-PN-0244
28	DRAIN WEDGE	M.ENJ-ERS-PLS-BYM-115
29	GASKET	M.CNT-ERS-031
30	FILTER COVER	M.ENJ-ERS-PLS-BYM-086
31	FILTER BODY+AIR TRAP	M.ENJ-ERS-PLS-BYM-088
32	DETERGENT ENTRY PLASTIC	M.PLS-ERS-036
33	GLASS FUSE 5A	M.ELK-SGR-011
34	WASH TIME RELAY	M.ELK-KNT-ROL-020

## GIOTINE TYPE DISHWASHER -DOUBLE SKIN

35	LC1K0901M7 CONTACTOR	ERS.M.ELK-KNT-KNT-020
36	SWITCH	M.ELK-SLT-PKO-014
37	HORIZONTAL SENSOR	M.ELK-SWC-KTG-005
38	DIGITAL PANEL GROUP	M.ELK-EDM-DGT-049
39	HOSE 150CM	ERS.M.MEK-TES-HRT-011
40	TOP COVER SPRING	M.YAY-ERS-041
41	ROLLER FOOT	ERS.M.AKS-AYK-PLS-005
42	SPRING STRING	ERS.M.MUH-042
43	CHASSIS	-
44	AIR TRAP	M.ENJ-ERS-PLS-BYM-019
45	MAGNET	M.MIK-ERS-002
46	ORING	M.CNT-ORG-002
47	INLET PIPE	YBR-ERS.BYM-KS-0001
48	TANK RESISTANCE 230V-2500W	M.ELK-RZS-BRU-BYM-028
49	FRONT SHEET	YSC-ERS.BYM-PN-0352
50	GREEN WARNING LAMP	ERS.M.ELK-LMB-SNY-001
51	YELLOW WARNING LAMP	ERS.M.ELK-LMB-SNY-003
52	SWITCH BUTTON	M.AKS-DGM-MUH-002
53	PANEL LABEL	M.AKS-ETK-LKS-ERS-BYM-013
54	RESISTANCE COVER	M.ENJ-ERS-PLS-BYM-028
55	ORING	M.CNT-ORG-012
56	BOILER RESISTANCE 380V-6000W	M.ELK-RZS-BRU-BYM-029
57	ARM CONNECTION	YTL-ERS.BYM-KS-0028
58	BOILER TANK	M.MEK-TES-BYM-BYL-002
59	PROCESTAT HOSE	HTS-HRT-008
60	THERMOSTAT 0-90°C	M.ELK-MEK-TRM1-008
61	PROCESTAT FLOAT	M.ELK-MUH-001
62	VALVE (14 LT)	M.ELK-SLN-PLS-001
63	LEFT SIDE SHEET	YSC-ERS.BYM-PN-0243
64	FILTER PLASTIC	M.ENJ-ERS-PLS-BYM-116
65	TABLE BODY SHEET	YSC-ERS.BYM-LZ-0307
66	PLATE BASKET	EMP.TB.01
67	GLASS BASKET	EMP.BB.01
68	SPOON FORK BASKET	EMP.KC.01
69	DIGITAL PANEL GROUP	M.ELK-EDM-DGT-049
70	DETERGENT PUMP	M.ELK-MTR-PMP-006
71	POLISHING PUMP	M.ELK-MTR-PMP-007

# GIOTINE TYPE DISHWASHER -DOUBLE SKIN

## H ELECTRIC CIRCUIT SCHEMA



<b>C1</b>	MAIN CONTACTOR 220 V.
<b>C2</b>	BOILER HEATER CONTACTOR 220 V.
<b>R1- R2</b>	BOİLER RESISTANCE 230 V.
<b>T1.T2.T3</b>	LIMIT THERMOSTAT 90°C
<b>NTC1- NTC2</b>	BOILER NTC
<b>S1</b>	MAGNETIC DOOR COVER
<b>S2- S3</b>	WATER LEVEL SENSOR
<b>M1</b>	WASHING ENGINE
<b>M2- M4</b>	RINSE PUMP
<b>M3</b>	EVACUATION PUMP
<b>M5</b>	DETERGENT PUMP
<b>V</b>	WATER VALVE