

# CONVEYOR TYPE DISHWASHER WITH DRYING TUNEL

## CONTENTS

---

<b>A</b>	<b>GENERAL INFORMATION .....</b>	<b>Page 2</b>
A1	PRODUCT DESCRIPTION .....	Page 3
A2	TECHNICAL INFORMATION .....	Page 3
A3	TRANSPORTATION .....	Page 4
A4	UNPACKING .....	Page 4
<b>B</b>	<b>INSTALLATION .....</b>	<b>Page 4</b>
<b>C</b>	<b>SAFETY INSTRUCTIONS .....</b>	<b>Page 5</b>
<b>D</b>	<b>OPERATION .....</b>	<b>Page 6</b>
<b>E</b>	<b>CLEANING &amp; MAINTENANCE .....</b>	<b>Page 8</b>
<b>F</b>	<b>TROUBLESHOOTING .....</b>	<b>Page 9</b>
<b>G</b>	<b>SPARE PART LIST- EXPLODING DRAWING .....</b>	<b>Page 10</b>
<b>H</b>	<b>ELECTRIC CIRCUIT SCHEMA .....</b>	<b>Page 18</b>

## A GENERAL INFORMATION

---

Before installing the appliance, read operation and maintenance instructions carefully. Wrong installation and part changing may damage the product or may cause injury on people. These are not in our company's responsibility to damage the appliance intentionally, negligence, detriments because of disobeying instructions and regulations, wrong connections. Unauthorized intervention to appliance invalidates the warranty.

1. This instruction manual should be kept in a safe place for future reference.
2. **Installation should be made in accordance with ordinances and security rules of that country by a qualified service personnel.**
3. This appliance has to be used by trained person.
4. Please turn off the appliance immediately in the event of malfunction or failure. The appliance should be repaired only by authorized service personnel. Please demand original spare part.



# CONVEYOR TYPE DISHWASHER WITH DRYING TUNEL

## A1 PRODUCT DESCRIPTION

\*The Professional Conveyor Type Dishwasher ,that provides high efficiency has been designed to be used in industrial kitchens.

Product Code	Dimensions (mm)	Weight (kg)	Packaging Dimensions (mm)
EMP.2000-SAG-R	1900x837x2000	317	2200x930x2040
EMP.2000-SOL-L	1900x837x2000	317	2200x990x2040
EMP.3000-SAG-R	2561x837x2000	405	2930x990x2040
EMP.3000SOL-L	2561x837x2000	405	2930x990x2040

## A2 TECHNICAL INFORMATION

Product Code	EMP.2000	EMP.3000
Capacity (Plate/ hour)	2000	3000
Burner Power (Kw)	24	24
Tank Power (Kw)	12	12
Drying Unit Motor Power (Kw)	9	9
Motor Power at without prewashing machines (Kw)	0,55 x2	0,55x3
Total Power (KW)	48	48
Operating Voltage (V)	380	380
Cable (mm <sup>2</sup> )	5x16	5x16
Fuse (A)	Min. 80	Min. 80
Control Current (V)	24	24

## **CONVEYOR TYPE DISHWASHER WITH DRYING TUNEL**

### **A3 TRANSPORTATION**

---

\*This appliance can not be moved by hand from area to area. It must be moved on pallet with forklift truck.

### **A4 UNPACKING**

---

\*Please unpack the package according to the security codes and ordinances of current country and get rid from the pack. Parts which contacts with food are produced by stainless steel. All plastic parts are marked by material's symbol.

\*Please check that all the parts of appliance had come completely and if they are damaged or not during the shipping.

### **B INSTALLATION**

---

\*Please place the product to straight and sturdy ground, please take necessary steps against possibility of overturn.

\*Technician who will serve for installation and service for the appliance must be professional on this subject and must have installation and service licenses by the company.

\*Connection to Electric Power Supply must be done by authorized person.

\*Please be sure that the voltage connected to appliance must be equal with the voltage which is on appliance's label.



This appliance must be connected to an earthed outlet in accordance with safety rules and standards.












\*Appliance's earthing must be connected to earthing line on panel which is nearest to electric installation.

\*Connection to the main fuse and leak current fuse must be done in accordance with the current regulations.

# CONVEYOR TYPE DISHWASHER WITH DRYING TUNEL

## C SAFETY INSTRUCTIONS

---

-  \*Do not use the appliance in insufficient lighted place.
-  \*Do not touch the moving attachments while the appliance operates.
-  \*Do not install the appliance in the presence of flammable or explosive materials.
-  \*Do not operate the appliance when the machine is empty.
-  \*Do not load so less or more than appliance's capacity.
-  \*Do not attempt to use the appliance without suitable protective equipments.
-  \*Because of any reason if there is a fire or flame flare where the appliance is used, turn off all gas valves and electric contactor switch quickly and use fire extinguisher. Never use water to extinguish the fire.
-  \*All the damages because of not having earthing connection will not be on warranty.
-  \*Do not wash the plastic materials that are not durable against temperature and solutions.
-  \*Do not cover the appliance with anything. There are absorption holes that mustn't be covered.
-  \*Use suitable detergents for aluminium to prevent aluminium stewpots and trays to leave black colour.

# CONVEYOR TYPE DISHWASHER WITH DRYING TUNEL

## D OPERATION

\*Control Panel;



## CONVEYOR TYPE DISHWASHER WITH DRYING TUNEL

### \*Operating;

- <sup>35</sup>/<sub>17</sub> Before putting the dishes in to the appliance,make prewash with cold or warm water without using any detergent.Turn off the waste water outlet stopple.
- <sup>35</sup>/<sub>17</sub> Turn on the water source valve and plug in the appliance.
- <sup>35</sup>/<sub>17</sub> In order to take off any residue that remain in storage or pipes,operate the appliance when it is empty.
- <sup>35</sup>/<sub>17</sub> Open the machine's lid.Check if there is motor filter,field strainer,separation cloaks and washing handles.Then close the machine's lid.
- <sup>35</sup>/<sub>17</sub> Check if there is detergent at material storage.Fill the storages at suitable time to get good washing or change.
- <sup>35</sup>/<sub>17</sub> Switch to 'water inlet ' to operate the appliance.
- <sup>35</sup>/<sub>17</sub> Complete and automatic washing is done minimum at 55°C,rinsing with hot water is done at minimum 80-85°C.
- <sup>35</sup>/<sub>17</sub> Main washing unit's tank and burner is filled automatically and heated.
- <sup>35</sup>/<sub>17</sub> Add detergent to the main washing unit's tank regularly.
- <sup>35</sup>/<sub>17</sub> After 'Ready Lamp' signals,the conveyor can be operated.
- <sup>35</sup>/<sub>17</sub> Switch to 2.Speed Position to chanfe conveyor's speed.
- <sup>35</sup>/<sub>17</sub> Push the baskets into the machine.Baskets are pulled to inside automatically.
- <sup>35</sup>/<sub>17</sub> Rinsing is activated by a second basket switch.
- <sup>35</sup>/<sub>17</sub> Leave the baskets at the outlet bench till it dries.In order to go on washing process,remove the baskets from outlet bench before the baskets reach to bench end ratchet.

# CONVEYOR TYPE DISHWASHER WITH DRYING TUNEL

## **E      CLEANING & MAINTENANCE**

---

### **CLEANING AND MAINTENANCE AFTER EVERY USE**

- <sup>35</sup>/<sub>17</sub> Always turn off the appliance and disconnect from the power supply before cleaning.
- <sup>35</sup>/<sub>17</sub> Drain the water by taking off the stopple after every use.
- <sup>35</sup>/<sub>17</sub> If the machine has drainage pump, use this pump for drainage.
  - Turn off the drainage pump.
  - Air of drainage is drained.
  - If air bubble doesn't go up, operate the drainage pump.
- <sup>35</sup>/<sub>17</sub> Use water hose and brush to clean inside of the appliance after every use.
- <sup>35</sup>/<sub>17</sub> Clean the control panel with a soft moist cloth and if necessary use detergent.
- <sup>35</sup>/<sub>17</sub> Do not use abrasive cleaning chemicals as these can leave harmful residues.
- <sup>35</sup>/<sub>17</sub> Do not clean the appliance by spraying water directly, otherwise electric motor may get damaged.

### **PERIODIC CLEANING AND MAINTENANCE**

- <sup>35</sup>/<sub>17</sub> Maintenance should be done by qualified person.
- <sup>35</sup>/<sub>17</sub> Clean the impurity filter every month.
- <sup>35</sup>/<sub>17</sub> Clean the washing handles once in 15 days.
- <sup>35</sup>/<sub>17</sub> The lime coats and impurities, oil residues may cause hygienic risk and heater parts may get damaged due to limes. Therefore these residues must be cleaned regularly.
  - Add suggested amount of lime remover to machine's tank.
  - Operate the machine with empty baskets till all lime residues are cleaned. Lime remover mustn't remain in the machine more than couple hours.
  - Drain the dirty water.
  - Provide the machine to be filled with water again.
  - In order to remove lime remover residues from washing system, operate the machine with empty baskets.
  - Drain the machine's water again.
  - Step in the detergent amount adjustment.



# CONVEYOR TYPE DISHWASHER WITH DRYING TUNEL

## F TROUBLESHOOTING

<b>THE APPLIANCE DOESN'T OPERATE</b>	<ol style="list-style-type: none"> <li>1. Switch on.</li> <li>2. Change the fuses at the fitting.</li> </ol>
<b>THE APPLIANCE DOESN'T FILL</b>	<ol style="list-style-type: none"> <li>1. Close the machine's lid.</li> <li>2. Turn on the water valve.</li> </ol>
<b>BASKET CONVEYOR DOESN'T OPERATE</b>	<ol style="list-style-type: none"> <li>1. Set free the ratchet at the end of bench.</li> <li>2. Close the machine's lid.</li> </ol>
<b>THE DISHES ARE NOT WASHED WELL</b>	<ol style="list-style-type: none"> <li>1. Adjust the detergent amount according to producer instructions.</li> <li>2. Check the washing hoses.Change material storage.</li> <li>3. Check detergent setting device.</li> <li>4. Do not accumulate the dishes.</li> <li>5. Take off the washing handles and clean the nozzles.</li> <li>6. Reduce the speed.</li> <li>7. Check the temperature,if it is not as desired,contact with authorized service.</li> </ol>
<b>RESIDUES ON DISHES</b>	<ol style="list-style-type: none"> <li>1. Check the external water preparing system.</li> <li>2. The temperature must be maximum 30°C.</li> </ol>
<b>DISHES ARE NOT DRIED</b>	<ol style="list-style-type: none"> <li>1. Check the amount of polisher.</li> <li>2. Check the drainage hoses.Change the polisher storage.</li> <li>3. Check the polisher setting device.</li> </ol>
<b>BASKETS ARE NOT MOVED TO MACHINE</b>	<ol style="list-style-type: none"> <li>1. Remove the baskets.</li> <li>2. Contact with authorized service.</li> </ol>

<sup>35</sup>/<sub>17</sub> If dishwashing is not done at suitable quality

<sup>35</sup>/<sub>17</sub> If any function of security doesn't work

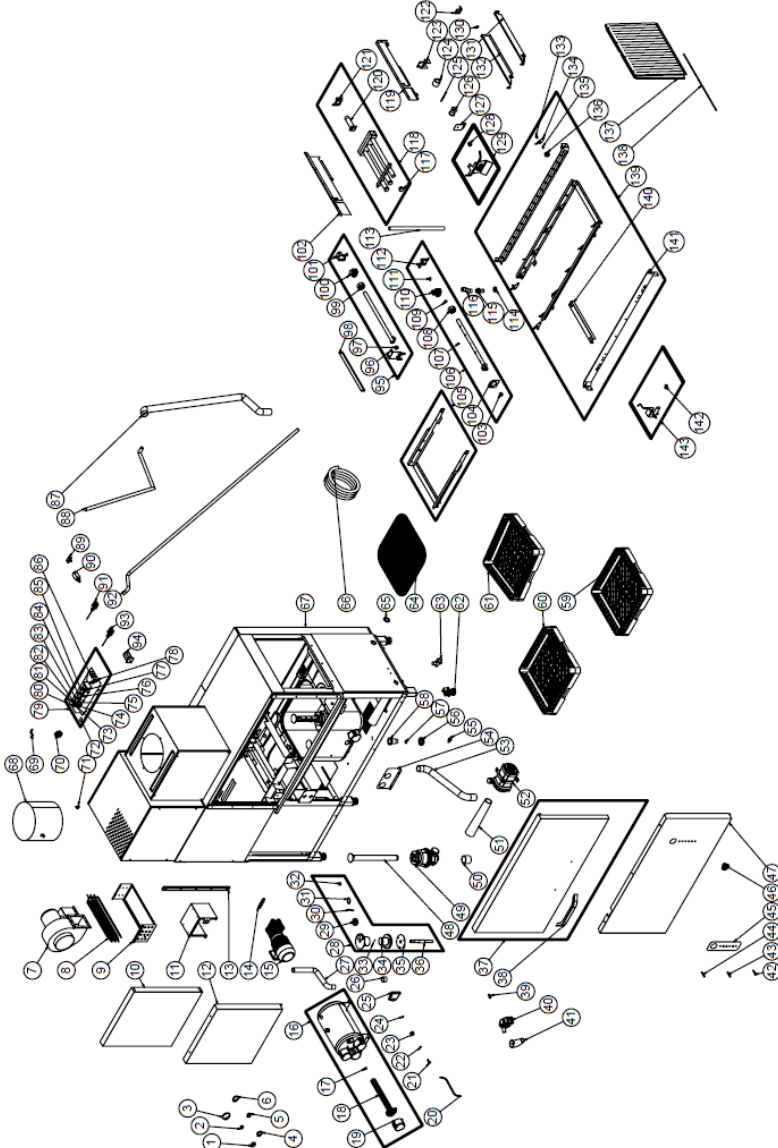
Do not use the appliance.

**\*If these problems are still going on,contact with our authorized services.**



# CONVEYOR TYPE DISHWASHER WITH DRYING TUNEL

## G SPARE PART LIST-EXPLODING DRAWING



EMP.2000-SAĞ-R / EMP.2000-SOL-L

# CONVEYOR TYPE DISHWASHER WITH DRYING TUNEL

## G SPARE PART LIST-EXPLODING DRAWING

PRODUCT CODE:EMP.2000-SAG-R / EMP.2000-SOL-L		
NO	NAME OF THE PRODUCT	PRODUCT CODE
1	HOSE CLAMP (20-32MM)	ERS.M.MEK-TES-KLP-005
2	HOSE CLAMP (12-20MM)	ERS.M.MEK-TES-KLP-002
3	HOSE CLAMP (40-60MM)	ERS.M.MEK-TES-KLP-003
4	HOSE CLAMP (25-40MM)	M.MEK-TES-KLP-004
5	HOSE CLAMP (68-73MM)	ERS.M.MEK-TES-INX-010
6	HOSE CLAMP (8-12MM)	M.MEK-TES-KLP-011
7	DRYING FAN MOTOR	M.ELK-HVL-SFN-002
8	220V/1500W DRYING RESISTANT	M.ELK-RZS-BRU-BYM-006
9	RESISTANCE CONNECTION SHEET	YSC-ERS.BYM-LZ-0315
10	DRYING FRONT TOP SHEET	YSC-ERS.BYM-PN-0252
11	DRYING FAN CONNECTION SHEET	YSC-ERS.BYM-LZ-0313
12	DRYING LOWER FRONT SHEET	YSC-ERS.BYM-PN-0253
13	PLASTIC SLIDE	M.ENJ-ERS-PLS-BYM-117
14	ENGINE TENSION SPRING	M.YAY-ERS-049
15	GEAR ENGINE	M.ELK-MTR-RLM-004
16	BOILER	ARA-ERS.BYM-0006
17	ORING (7X57)	M.CNT-ORG-012
18	BOILER RESISTANCE 380V-6000W	M.ELK-RZS-BRU-BYM-029
19	RESISTANCE COVER	M.ENJ-ERS-PLS-BYM-028
20	PROCESTAT HOSE	HTS-HRT-008
21	AIR TRAP SHAFT	YTL-ERS.BYM-KS-0002
22	ORING (2,5X11)	M.CNT-ORG-002
23	AIR TRAP LOCATION	M.ENJ-ERS-PLS-BYM-015
24	ORING (3X11)	M.CNT-ORG-003
25	AIR TRAP	M.ENJ-ERS-PLS-BYM-019
26	SMALL BUSHING ELEMENT	YTL-ERS.BYM-KS-0126
27	RINSE HOSE	M.MEK-TES-HRT-093
28	CONVEYOR MECHANISM	ARA-ERS.BYM-0019
29	BEARING (6304 2RS C3)	M.RLM-NRM-028
30	KAMA 6*6*61	M.KAM-6*6*61
31	RING (471-20)	B-SEG-SYH-018
32	FELT 20*52*10	M.CNT-KCE-028
33	CONVEYOR PIN	YTL-ERS.BYM-KS-0049
34	REDUCER SLEEVE	YDK-ERS.BYM-CN-0004
35	SILICONE GASKET	M.ENJ-ERS-LST-026
36	LARGE GEAR BUSH	YTL-ERS.BYM-KS-0117
37	LID	ARA-ERS.BYM-0018
38	DOOR HANDLE	ERS.M.AKS-KLP-INX-002
39	DETERGENT ENTRY PLASTIC	M.PLS-ERS-036
40	DRAIN PUMP	M.ELK-MTR-PMP-002
41	DRAIN HOSE	M.MEK-TES-HRT-073
42	GREEN WARNING LAMP	ERS.M.ELK-LMB-SNY-001
43	YELLOW WARNING LAMP	ERS.M.ELK-LMB-SNY-003
44	RED WARNING LAMP	M.ELK-LMB-SNY-009
45	PANEL LABEL	M.AKS-ETK-LKS-ERS-BYM-

# CONVEYOR TYPE DISHWASHER WITH DRYING TUNEL

46	BUTTON	M.AKS-DGM-MUH-002
47	OUTER FRONT SHEET	YSC-ERS.BYM-LZ-0343
48	DRAIN PLUG	YBR-ERS.BYM-KS-0045
49	DISCHARGE GROUP	M.ENJ-ERS-PLS-BYM-125
50	FILTER HOSE	M.MEK-TES-HRT-096
51	PUMP HOSE	M.MEK-TES-HRT-095
52	WASHING MOTOR	M.ELK-MTR-PMP-001
53	PUMP SPRAY HOSE	M.MEK-TES-HRT-088
54	RESISTANCE HANGER SHEET	YSC-ERS.BYM-LZ-0505
55	RINSE A T	M.PLS-ERS-035
56	WEDGE NUT	M.ENJ-ERS-PLS-BYM-012
57	ORING (4X40)	M.CNT-ORG-007
58	WEDGE LOCATION	M.ENJ-ERS-PLS-BYM-011
59	PLATE BASKET	EMP.TB.01
60	SPOON FORK BASKET	EMP.KC.01
61	GLASS BASKET	EMP.BB.01
62	ROTARY FEET	ERS.M.AKS-AYK-PLS-005
63	VALVE (14 LT)	M.ELK-SLN-PLS-001
64	BOILER FILTER PLASTIC	M.ENJ-ERS-PLS-BYM-121
65	DRAIN PIPE RUBBER	M.ENJ-ERS-LST-040
66	MAINS HOSE	M.MEK-TES-HRT-021
67	CHASSIS	-
68	VENTILATION CHIMNEY SHEET	YSC-ERS.BYM-PN-0275
69	PROCESTAT CONNECTION PLASTIC	M.ENJ-ERS-PLS-BYM-058
70	PROCESTAT FLOAT	M.ELK-MUH-016
71	FLUE CONNECTION SHEET	YSC-ERS.BYM-PN-0276
72	MM-B38L-YA MAGNETIC SENSOR	M.ELK-SWC-KTG-005
73	RELAY	M.ELK-KNT-ROL-011
74	RELAY SOCKET	M.ELK-KNT-ROL-010
75	TIMER	ERS.M.ELK-KNT-ROL-007
76	LOAD RELAY	ERS.M.ELK-KNT-ROL-021
77	LOAD RELAY	ERS.M.ELK-KNT-ROL-022
78	PANEL SHEET	YSC-ERS.KD-LZ-0045
79	PANEL GROUP	M.ELK-KD-EDM-002
80	MINI CONTACTOR	ERS.M.ELK-KNT-KNT-020
81	CONTACTOR	ERS.M.ELK-KNT-KNT-027
82	evacuation time relay	M.ELK-KNT-ROL-026
83	RELAY SOCKET	ERS.M.ELK-KNT-ROL-019
84	ROLE 230 V	ERS.M.ELK-KNT-ROL-023
85	TIMER	ERS.M.ELK-KNT-ROL-027
86	EZ9F43325 25A THREE PHASE FUSE	M.ELK-SGR-014
87	PUMP SPRAY HOSE 2	M.MEK-TES-HRT-087
88	WASTE WATER HOSE	M.MEK-TES-HRT-034
89	SWITCH	M.ELK-SWC-OZEL-005
90	SWITCH	ERS.M.ELK-SWC-EMAS-001
91	THERMOSTAT 0-90°C	M.ELK-MEK-TRM1-008
92	VALVE HOSE	M.MEK-TES-HRT-098
93	THERMOSTAT 30-120 °C	M.ELK-MEK-TRM1-013
94	LEVER	M.ELK-SLT-PKO-017



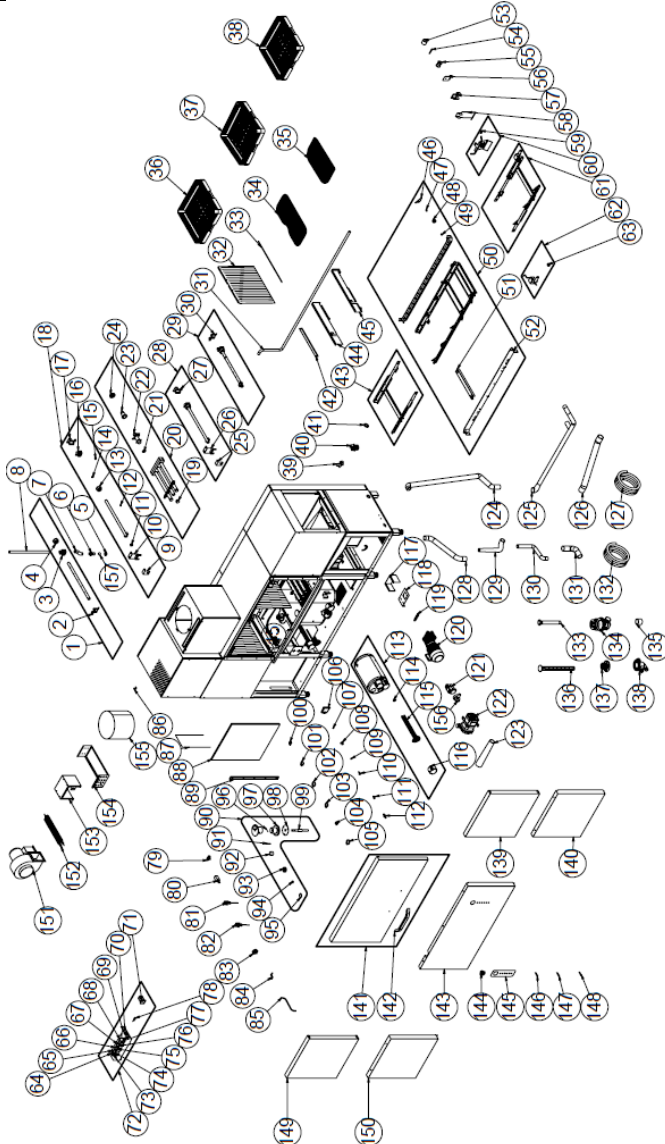
# CONVEYOR TYPE DISHWASHER WITH DRYING TUNEL

95	RINSE TOP SPRAY	ARA-ERS.BYM-0003
96	UPPER SUPPLY CONNECTION SHEET	YSC-ERS.BYM-PN-0291
97	PIPE PLUG	YTL-ERS.BYM-KS-0083
98	AIR VALVE SHEET	YSC-ERS.BYM-PN-0274
99	RINSE NUT	M.ENJ-ERS-PLS-BYM-118
100	UPPER NUT PROVISION	M.ENJ-ERS-PLS-BYM-119
101	SHOPPING SHEET	YSC-ERS.BYM-LZ-0429
102	FOUNTAIN UPPER LEFT SLIDE SHEET	YSC-ERS.BYM-LZ-0332
103	PIPE PLUG	YTL-ERS.BYM-KS-0083
104	BOTTOM SUPPLY CONNECTION SHEET	YSC-ERS.BYM-LZ-0337
105	CONVEYOR DRYING	ARA-ERS.BYM-0016
106	RINSE BOTTOM SPRAY	ARA-ERS.BYM-0004
107	RINSE STEP	YTL-ERS.BYM-KS-0044
108	RINSE NUT	M.ENJ-ERS-PLS-BYM-118
109	ORING Ø24,99*3,53	M.CNT-ORG-037
110	UPPER NUT PROVISION	M.ENJ-ERS-PLS-BYM-120
111	ORING (3X11)	M.CNT-ORG-003
112	WATER INLET CONNECTION SHEET	YSC-ERS.BYM-LZ-0342
113	INTERMEDIATE PIPE	YBR-ERS.BYM-KS-0037
114	WEDGE NUT	M.ENJ-ERS-PLS-BYM-012
115	CONNECTION PLASTIC	M.ENJ-ERS-PLS-BYM-130
116	FOIN CONNECTION HOSE	M.MEK-TES-HRT-099
117	ARM PLUG	YTL-ERS.BYM-KS-0047
118	MAIN WASHING SPIN	ARA-ERS.BYM-0001
119	FOUNTAIN UPPER RIGHT SLIDE SHEET	YSC-ERS.BYM-LZ-0333
120	PRESSURE PIPE	YBR-ERS.BYM-KS-0036
121	PIPE CONNECTION SHEET	YSC-ERS.BYM-LZ-0168
122	PRESSURE PIPE STOP SHEET	YSC-ERS.BYM-PN-0293
123	SPRING TOP CONNECTION SHEET	YSC-ERS.BYM-LZ-0443
124	COVER MECHANISM SPRING	M.YAY-ERS-010
125	STRAINER BEARING SHAFT	YTL-ERS.BYM-KS-0003
126	SPRING CONNECTION	YTL-ERS.BYM-KS-0046
127	SPRING LOWER CONNECTION SHEET	YSC-ERS.BYM-LZ-0444
128	MAGNET	M.MIK-ERS-006
129	RINSE MECHANISM	ARA-ERS.BYM-0039
130	ORING 31.5*3.5	M.CNT-ORG-036
131	FOUNTAIN LOWER RIGHT SLIDE SHEET	YSC-ERS.BYM-LZ-0335
132	SHOPPING BOTTOM LEFT SHEET	YSC-ERS.BYM-LZ-0334
133	ZODIAC SIGN	YTL-ERS.BYM-KS-0082
134	BASKET PUSHER SHEET	YSC-ERS.BYM-PN-0267
135	WASHING ELEMENT	YBR-ERS.BYM-KS-0043
136	CONVEYOR WHEEL	YTL-ERS.BYM-KS-0084
137	CURTAIN	ERS.M.MUH-105
138	CURTAIN SHAFT 620 MM	HDM-ML-304-5,80-005
139	CONVEYOR	ARA-ERS.BYM-0017
140	ENGINE CONNECTION SHEET	YSC-ERS.BYM-PN-0290
141	CONVEYOR TOP SHEET	YSC-ERS.BYM-LZ-0336
142	MAGNET	M.MIK-ERS-010
143	START SWITCH	ARA-ERS.BYM-0038



# CONVEYOR TYPE DISHWASHER WITH DRYING TUNEL

## G SPARE PART LIST-EXPLODING DRAWING



EMP.3000-SAG-R / EMP.3000-SOL-L

# CONVEYOR TYPE DISHWASHER WITH DRYING TUNEL

## G SPARE PART LIST-EXPLODING DRAWING

PRODUCT CODE:EMP.3000-SAĞ-R / EMP.3000-SOL-L		
NO	NAME OF THE PRODUCT	PRODUCT CODE
1	RINSE BOTTOM SPRAY	ARA-ERS.BYM-0004
2	SUPPLY WATER INLET CONNECTION SHEET	YSC-ERS.BYM-LZ-0342
3	BOTTOM NUT PROVISION	M.ENJ-ERS-PLS-BYM-120
4	RINSE NUT	M.ENJ-ERS-PLS-BYM-118
5	INLET NUT	M.ENJ-ERS-PLS-BYM-131
6	CONNECTION PLASTIC	M.ENJ-ERS-PLS-BYM-130
7	SPRAY CONNECTION HOSE	M.MEK-TEŞ-HRT-099
8	FRONT WASHER INTERMEDIATE PIPE	YBR-ERS.BYM-KS-0037
9	TOP SPRAY LOCK SHEET	YSC-ERS.BYM-PN-0272
10	TOP SPRAY CONNECTION SHEET	YSC-ERS.BYM-PN-0291
11	PIPE PLUG	YTL-ERS.BYM-KS-0083
12	RINSE STEP	YTL-ERS.BYM-KS-0044
13	RINSE NUT	M.ENJ-ERS-PLS-BYM-118
14	ORING Ø24.99*3.53	M.CNT-ORG-037
15	ORING (3X11)	M.CNT-ORG-003
16	UPPER NUT PROVISION	M.ENJ-ERS-PLS-BYM-119
17	SHOPPING SHEET	YSC-ERS.BYM-LZ-0429
18	RINSE TOP SPRAY	ARA-ERS.BYM-0003
19	ARM PLUG	YTL-ERS.BYM-KS-0047
20	MAIN WASH SPIN	ARA-ERS.BYM-0001
21	ORING 31.5*3.5	M.CNT-ORG-036
22	FOUNTAIN PRESSURE PIPE	YBR-ERS.BYM-KS-0036
23	WEDGE LOCATION	M.ENJ-ERS-PLS-BYM-011
24	WEDGE NUT	M.ENJ-ERS-PLS-BYM-012
25	TOP SWITCH LOCK SHEET	YSC-ERS.BYM-PN-0272
26	UPPER SUPPLY CONNECTION SHEET	YSC-ERS.BYM-PN-0291
27	SHOPPING SHEET	YSC-ERS.BYM-LZ-0429
28	UPPER SPIN	ARA-ERS.BYM-0002
29	PRE-WASH LOWER SPRAY	ARA-ERS.BYM-0005
30	WATER INLET CONNECTION SHEET	YSC-ERS.BYM-LZ-0342
31	VALVE HOSE	M.MEK-TEŞ-HRT-098
32	CURTAIN	ERS.M.MUH-105
33	CURTAIN SHAFT	HDM-ML-304-5.80-005
34	BOILER FILTER PLASTIC	M.ENJ-ERS-PLS-BYM-121
35	FILTER PLASTIC	M.ENJ-ERS-PLS-BYM-116
36	PLATE BASKET	EMP.TB.01
37	SPOON FORK BASKET	EMP.KC.01
38	GLASS BASKET	EMP.BB.01
39	VALVE (14 LT)	M.ELK-SLN-PLS-001
40	ROTARY FEET	ERS.M.AKS-AYK-PLS-005
41	evacuation rubber	M.ENJ-ERS-LST-040
42	AIR VALVE SHEET	YSC-ERS.BYM-PN-0274
43	CONVEYOR DRYING	ARA-ERS.BYM-0016
44	FOUNTAIN UPPER LEFT SLIDE SHEET	YSC-ERS.BYM-LZ-0332
45	FOUNTAIN UPPER RIGHT SLIDE SHEET	YSC-ERS.BYM-LZ-0333
46	BASKET PUSHER SHEET	YSC-ERS.BYM-PN-0267
47	RING	YTL-ERS.BYM-KS-0082
48	CONVEYOR WHEEL	YTL-ERS.BYM-KS-0084
49	WASHING ELEMENT	YBR-ERS.BYM-KS-0043

# CONVEYOR TYPE DISHWASHER WITH DRYING TUNEL

50	CONVEYOR	ARA-ERS.BYM-0017
51	ENGINE CONNECTION SHEET	YSC-ERS.BYM-PN-0290
52	CONVEYOR TOP SHEET	YSC-ERS.BYM-LZ-0336
53	COVER MECHANISM SPRING	M.YAY-ERS-010
54	STRAINER BEARING SHAFT	YTL-ERS.BYM-KS-0003
55	SPRING CONNECTION	YTL-ERS.BYM-KS-0046
56	SPRING LOWER CONNECTION SHEET	YSC-ERS.BYM-LZ-0444
57	SPRING TOP CONNECTION SHEET	YSC-ERS.BYM-LZ-0443
58	COVER STOP SHEET	YSC-ERS.BYM-LZ-0108
59	MAGNET	M.MIK-ERS-006
60	RINSE MECHANISM	ARA-ERS.BYM-0039
61	CONVEYOR PREWASH	ARA-ERS.BYM-0021
62	START SWITCH	ARA-ERS.BYM-0038
63	MAGNET	M.MIK-ERS-010
64	RELAY	M.ELK-KNT-ROL-011
65	RELAY SOCKET	M.ELK-KNT-ROL-010
66	TIMER	ERS.M.ELK-KNT-ROL-007
67	LOAD RELAY	ERS.M.ELK-KNT-ROL-021
68	LOAD RELAY	ERS.M.ELK-KNT-ROL-022
69	MINI CONTACTOR	ERS.M.ELK-KNT-KNT-020
70	CONTACTOR	ERS.M.ELK-KNT-KNT-027
71	LEVER	M.ELK-SLT-PKO-017
72	PANEL GROUP	M.ELK-KD-EDM-002
73	evacuation time relay	M.ELK-KNT-ROL-026
74	RELAY SOCKET	ERS.M.ELK-KNT-ROL-019
75	ROLE 230 V	ERS.M.ELK-KNT-ROL-023
76	TIMER	ERS.M.ELK-KNT-ROL-027
77	25A THREE PHASE FUSE	M.ELK-SGR-014
78	MAGNETIC SENSOR	M.ELK-SWC-KTG-005
79	SWITCH	ERS.M.ELK-SWC-EMAS-001
80	SWITCH	M.ELK-SWC-OZEL-005
81	THERMOSTAT 0-90°C	M.ELK-MEK-TRM1-008
82	THERMOSTAT 30-120 °C	M.ELK-MEK-TRM1-013
83	PROCESTAT FLOAT	M.ELK-MUH-016
84	PROCESTAT CONNECTION PLASTIC	M.ENJ-ERS-PLS-BYM-058
85	PROCESTAT HOSE	HTS-HRT-008
86	FLUE CONNECTION L SHEET	YSC-ERS.BYM-PN-0276
87	U WICK	HGN-LAS-ERS-002
88	PANEL PROTECTION COVER SHEET	YSC-ERS.BYM-LZ-0441
89	PLASTIC SLIDE	M.ENJ-ERS-PLS-BYM-117
90	CONVEYOR MECHANISM	ARA-ERS.BYM-0019
91	KAMA 6*6*61	M.KAM-6*6*61
92	zodiac ring	YTL-ERS.BYM-KS-0126
93	BEARING (6304 2RS C3)	M.RLM-NRM-028
94	FELT 20*52*10	M.CNT-KCE-028
95	RING (471-20)	B-SEG-SYH-018
96	CONVEYOR PIN	YTL-ERS.BYM-KS-0049
97	REDUCER SLEEVE	YDK-ERS.BYM-CN-0004
98	REDUCER SLEEVE SILICONE GASKET	M.ENJ-ERS-LST-026
99	LARGE GEAR BUSH	YTL-ERS.BYM-KS-0117
100	HOSE CLAMP (12-20MM)	ERS.M.MEK-TES-KLP-002
101	HOSE CLAMP (40-60MM)	ERS.M.MEK-TES-KLP-003
102	HOSE CLAMP (25-40MM)	M.MEK-TES-KLP-004
103	HOSE CLAMP (20-32MM)	ERS.M.MEK-TES-KLP-005



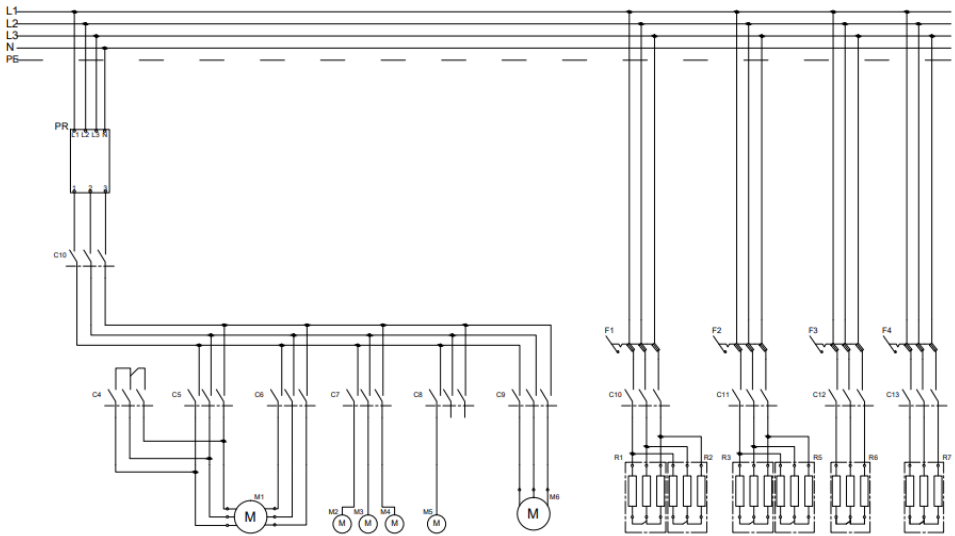
# CONVEYOR TYPE DISHWASHER WITH DRYING TUNEL

104	HOSE CLAMP (8-12MM)	M.MEK-TES-KLP-011
105	HOSE CLAMP (68-73MM)	ERS.M.MEK-TES-INX-010
106	AIR TRAP	M.ENJ-ERS-PLS-BYM-019
107	ORING (3X11)	M.CNT-ORG-003
108	AIR TRAP LOCATION	M.ENJ-ERS-PLS-BYM-015
109	ORING (2.5X11)	M.CNT-ORG-002
110	AIR TRAP SHAFT	YTL-ERS.BYM-KS-0002
111	DETERGENT ENTRY PLASTIC	M.PLS-ERS-036
112	RINSE A T	M.PLS-ERS-035
113	BOILER	ARA-ERS.BYM-0006
114	ORING (7X57)	M.CNT-ORG-012
115	BOILER RESISTANCE 380V-6000W	M.ELK-RZS-BRU-BYM-029
116	RESISTANCE COVER	M.ENJ-ERS-PLS-BYM-028
117	ENGINE CONNECTION BODY SHEET	YSC-ERS.BYM-PN-0288
118	ENGINE CONNECTION BODY BASE SHEET	YSC-ERS.BYM-PN-0289
119	ENGINE TENSION SPRING	M.YAY-ERS-049
120	GEAR ENGINE	M.ELK-MTR-RLM-004
121	DRAIN PUMP	M.ELK-MTR-PMP-002
122	WASHING MOTOR	M.ELK-MTR-PMP-001
123	BOILER PUMP HOSE	M.MEK-TES-HRT-095
124	PUMP SPRAY HOSE 2	M.MEK-TES-HRT-087
125	DRAIN HOSE	M.MEK-TES-HRT-097
126	BOILER CONNECTION HOSE	M.MEK-TES-HRT-091
127	MAINS HOSE	M.MEK-TES-HRT-021
128	PUMP SPRAY HOSE 1	M.MEK-TES-HRT-088
129	PUMP PREWASH HOSE	M.MEK-TES-HRT-089
130	RINSE HOSE	M.MEK-TES-HRT-093
131	PREWASH BOILER PUMP HOSE	M.MEK-TES-HRT-090
132	WASTE WATER HOSE	M.MEK-TES-HRT-034
133	DRAIN WEDGE	M.ENJ-ERS-PLS-BYM-115
134	DISCHARGE GROUP	M.ENJ-ERS-PLS-BYM-125
135	FILTER HOSE	M.MEK-TES-HRT-096
136	DRAIN PLUG	YBR-ERS.BYM-KS-0045
137	FILTER COVER	M.ENJ-ERS-PLS-BYM-086
138	FILTER BODY+AIR TRAP	M.ENJ-ERS-PLS-BYM-088
139	BODY FRONT SHEET	YSC-ERS.BYM-PN-0299
140	BOTTOM COVER SHEET	YSC-ERS.BYM-PN-0300
141	LID	ARA-ERS.BYM-0018
142	DOOR HANDLE	ERS.M.AKS-KLP-INX-002
143	OUTER FRONT SHEET	YSC-ERS.BYM-LZ-0343
144	SWITCH BUTTON	M.AKS-DGM-MUH-002
145	PANEL LABEL	M.AKS-ETK-LKS-ERS-BYM-
146	GREEN WARNING LAMP	ERS.M.ELK-LMB-SNY-001
147	YELLOW WARNING LAMP	ERS.M.ELK-LMB-SNY-003
148	RED WARNING LAMP	M.ELK-LMB-SNY-009
149	DRYING FRONT TOP SHEET	YSC-ERS.BYM-PN-0252
150	DRYING LOWER FRONT SHEET	YSC-ERS.BYM-PN-0253
151	DRYING FAN MOTOR	M.ELK-HVL-SFN-002
152	220V/1500W DRYING RESISTANT	M.ELK-RZS-BRU-BYM-006
153	FAN CONNECTION SHEET	YSC-ERS.BYM-LZ-0313
154	RESISTANCE CONNECTION SHEET	YSC-ERS.BYM-LZ-0315
155	VENTILATION CHIMNEY SHEET	YSC-ERS.BYM-PN-0275
156	DRAIN PUMP PLASTIC	M.ENJ-ERS-PLS-BYM-111
157	ORING (4X40)	M.CNT-ORG-007



# CONVEYOR TYPE DISHWASHER WITH DRYING TUNNEL

## H ELECTRIC CIRCUIT SCHEMA

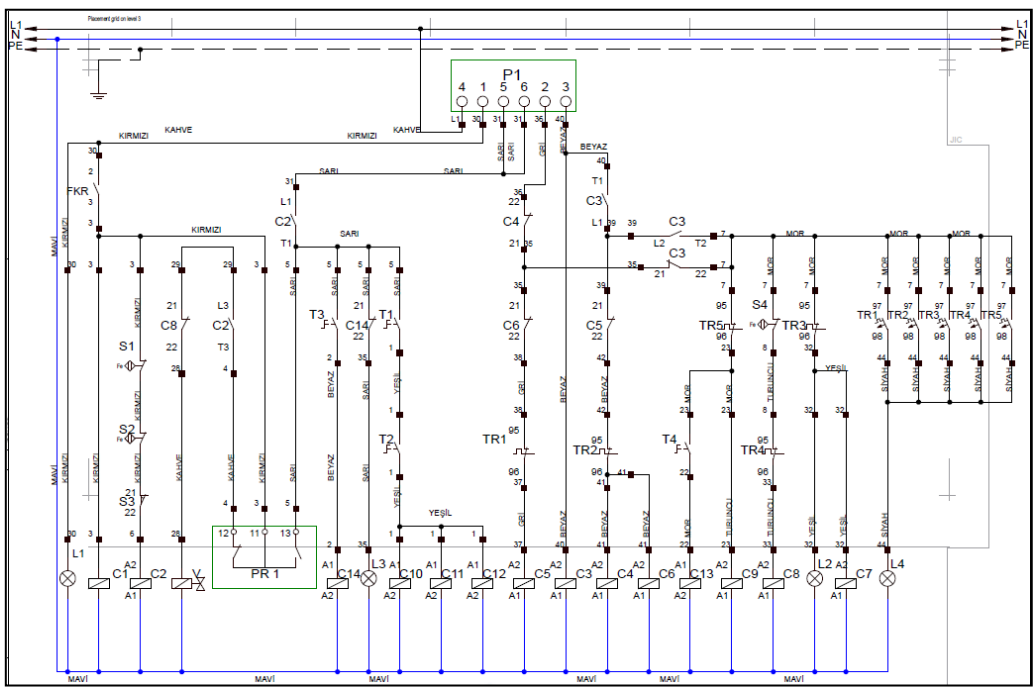


EMP.2000 POWER CIRCUIT

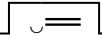


# CONVEYOR TYPE DISHWASHER WITH DRYING TUNEL

## H ELECTRIC CIRCUIT SCHEMA



EMP.2000 CONTROL CIRCUIT



**H ELECTRIC CIRCUIT SCHEMA****EMP.2000 ELECTRIC CIRCUIT SCHEMA EXPLANATION**

<b>P1</b>	3 Graded Contactor
<b>C1</b>	Phase Collation Contactor 220V
<b>C2</b>	Lid Contactor 220V
<b>C10</b>	Burner 1 Resistance Contactor 220V
<b>C11</b>	Burner 2 Resistance Contactor 220V
<b>C12</b>	Burner 3 Resistance Contactor 220V
<b>C14</b>	Washing Resistance Contactor 220V
<b>C7</b>	Auxiliary Relay Contactor 220V
<b>C5</b>	Conveyor 1.Speed Contactor 220V
<b>C6</b>	Conveyor 2. Speed Contactor 220V
<b>C4</b>	Conveyor Bridging Contactor 220V
<b>C13</b>	Drying Resistance Contactor 220V
<b>C9</b>	Drying Fan Contactor 220V
<b>C8</b>	Rinsing Contactor 220V
<b>C7</b>	Washing Contactor 220V
<b>S1</b>	Magnetic Lid Sensor
<b>S2</b>	Magnetic Rinsing Sensor
<b>S3</b>	Magnetic Termination Sensor
<b>T1</b>	Burner Resistance Control Thermostat 1 (30-90°C)
<b>T2</b>	Burner Resistance Control Thermostat 2 (30-90°C)
<b>T3</b>	Washing Resistance Control Thermostat (30-90°C)
<b>T4</b>	Drying Resistance Control Thermostat (60-200°C)
<b>PR1</b>	Prosestat 1 (Pressure Switch)
<b>PR2</b>	Prosestat 2 (Pressure Switch)
<b>L1</b>	Start Signal Lamp 220V
<b>L3</b>	Ready Signal Lamp 220V
<b>L2</b>	Washing Signal Lamp 220V
<b>L4</b>	Error Signal Lamp 220V
<b>V</b>	Solenoid Valve 220V
<b>FKR.10</b>	Phase Collation Relay 220V

# CONVEYOR TYPE DISHWASHER WITH DRYING TUNEL

<b>TR1</b>	Conveyor 1 Motor Safety Relay (1,6 - 2,4 A)
<b>TR2</b>	Conveyor 2 Motor Safety Relay (1,6 - 2,4 A)
<b>TR5</b>	Drying Fan Motor Safety Relay (1,6 - 2,4 A)
<b>TR4</b>	Rinsing Motor Safety Relay (1,6 - 2,4 A)

## H ELECTRIC CIRCUIT SCHEMA

### EMP.2000 ELECTRIC CIRCUIT SCHEMA EXPLANATION

<b>TR3</b>	Washing Motor Safety Relay (1,6 - 2,4 A)
<b>RB1</b>	Burner Resistance 1 (9000W 380V)
<b>RB2</b>	Burner Resistance 2 (9000W 380V)
<b>RB3</b>	Burner Resistance 3 (9000W 380V)
<b>RK</b>	Washing Resistance (9000W 380V)
<b>RY</b>	Drying Resistance (9000W 380V)
<b>M1</b>	Washing Motor Pump 0,55KW 2800 rpm 220V
<b>M2</b>	Washing Motor Pump 0,55KW 2800 rpm 220V
<b>M3</b>	Washing Motor Pump 0,55KW 2800 rpm 220V
<b>M4</b>	Double Speed Conveyor Motor 0,25-0,40 KW 1400-2800 rpm 380V
<b>M5</b>	Rinsing Pump 0,47KW 2800 rpm 220V
<b>M6</b>	Drying Fan Motor 0,55KW 2800 rpm 380V
<b>M7</b>	Cooler Fan 220V
<b>F1</b>	Burner Resistance 1 insurance 3x25 A.
<b>F2</b>	Burner Resistance 2 insurance 3x25 A.
<b>F3</b>	Burner Resistance 3 insurance 3x25 A.
<b>F4</b>	Drying Resistance insurance 3x25 A.
<b>F5</b>	Washing Resistance insurance 3x25 A.



# CONVEYOR TYPE DISHWASHER WITH DRYING TUNEL