

UTENSIL WASHER

CONTENTS

A	GENERAL INFORMATION	Page 2
A1	PRODUCT DESCRIPTION	Page 3
A2	TECHNICAL INFORMATION	Page 3
A3	TRANSPORTATION	Page 4
A4	UNPACKING	Page 4
B	INSTALLATION	Page 4
C	SAFETY INSTRUCTIONS	Page 5
D	OPERATION	Page 6
E	CLEANING & MAINTENANCE.....	Page 7
F	TROUBLESHOOTING	Page 8
G	SPARE PART LIST- EXPLODING DRAWING	Page 9
H	ELECTRIC CIRCUIT SCHEMA	Page 15

A GENERAL INFORMATION

Before installing the appliance, read operation and maintenance instructions carefully. Wrong installation and part changing may damage the product or may cause injury on people. These are not in our company's responsibility to damage the appliance intentionally, negligence, detriments because of disobeying instructions and regulations, wrong connections. Unauthorized intervention to appliance invalidates the warranty.

1. This instruction manual should be kept in a safe place for future reference.
- 2. Installation should be made in accordance with ordinances and security rules of that country by a qualified service personnel.**
3. This appliance has to be used by trained person.
4. Please turn off the appliance immediately in the event of malfunction or failure. The appliance should be repaired only by authorized service personnel. Please demand original spare part.

UTENSIL WASHER

A1 PRODUCT DESCRIPTION

*The Professional utensil washer ,that provides high efficiency has been designed to be used in industrial kitchens.

Product Code	Dimensions (mm)	Weight (kg)	Packaging Dimensions (mm)
EMP.UW-80	764x960x2006	225	
EMP.UW-130	1360x930x2006	300	

A2 TECHNICAL INFORMATION

Product Code	EMP.UW-80	EMP.UW-130
Capacity (basket/clock)	30	30
Capacity (tray/ clock)	240 pcs 60x80cm	480 pcs 60x80cm
Capacity (tray/ clock)	60 pcs GN 1/1	120 pcs GN 1/1
Water Consumption (Lt/piece.)	4,5	7,5
Tank Volume (Lt)	80	130
Total Power (KW)	30	40
Motor Power (KW)	1,5 kW 2800 Rev/Min	1,5 kW 2800 Rev/Min
Operating Voltage (V)	380	380
Water Pressure (bar)	4	4
Tank Heating Power (KW)	6	12
Rinsing Tank Power (KW)	18	18
Cable (mm ²)	5x6	5x6
Fuse (A)	32	32
Program Number	120sn – 240sn – 360sn	120sn – 240sn – 360sn

A3 TRANSPORTATION

*This appliance can not be moved by hand from area to area. It must be moved on pallet with forklift truck.

A4 UNPACKING

*Please unpack the package according to the security codes and ordinances of current country and get rid from the pack. Parts which contacts with food are produced by stainless steel. All plastic parts are marked by material's symbol.

*Please check that all the parts of appliance had come completely and if they are damaged or not during the shipping.

B INSTALLATION

*Please place the product to straight and sturdy ground, please take necessary steps against possibility of overturn.

*Technician who will serve for installation and service for the appliance must be professional on this subject and must have installation and service licenses by the company.

*Connection to Electric Power Supply must be done by authorized person.

*Please be sure that the voltage connected to appliance must be equal with the voltage which is on appliance's label.













This appliance must be connected to an earthed outlet in accordance with safety rules and standards.

*Appliance's earthing must be connected to earthing line on panel which is nearest to electric installation.

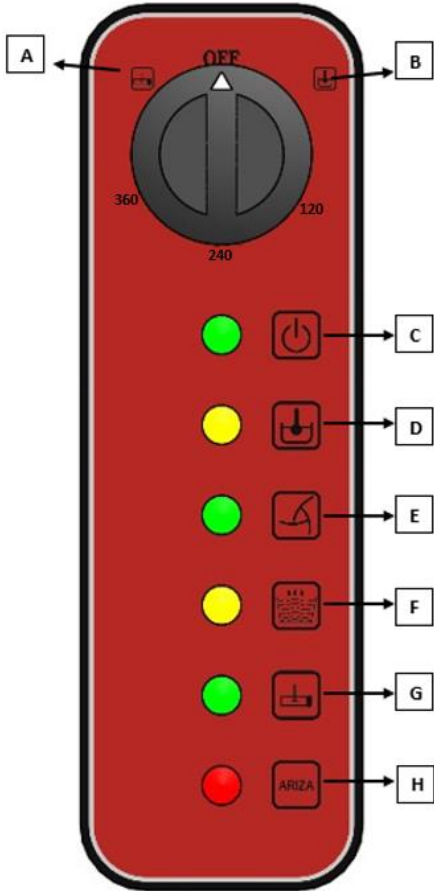
*Connection to the main fuse and leak current fuse must be done in accordance with the current regulations.

UTENSIL WASHER

C SAFETY INSTRUCTIONS

-  *Do not use the appliance in insufficient lighted place.
-  *Do not touch the moving attachments while the appliance operates.
-  *Do not install the appliance in the presence of flammable or explosive materials.
-  *Do not operate the appliance when the machine is empty.
-  *Do not load so less or more than appliance's capacity.
-  *Do not attempt to use the appliance without suitable protective equipments.
-  *Because of any reason if there is a fire or flame flare where the appliance is used, turn off all gas valves and electric contactor switch quickly and use fire extinguisher. Never use water to extinguish the fire.
-  *All the damages because of not having earthing connection will not be on warranty.
-  *Do not wash the decorated dishes. Prevent silver wares to contact with the other metals.
-  *The appliance must be operated under the chimney hood. Otherwise while the appliance is operating or the water vapor that comes from other appliances that works in the area may cause moist and the moist may damage appliance's electrical and mechanical parts. The relative humidity mustn't be more than %65 where the appliance operates.

D OPERATION



*Control Panel;

- A : Water Inlet
- B : Program Option
- C : ON Lamp
- D : Water heated lamp
- E : Washing Lamp
- F : Water inlet-Rinsing lamp
- G :
- H :

* Operating;

- Change the water that is in water tank at least once in a day.
- Before putting the dishes in to the appliance,make prewash with cold or warm water without using any detergent.
- Turn on the water source valve and plug in the appliance.
- In order to take off any residue that remain in storage or pipes,operate the appliance when it is empty.
- Close the appliance's outlet and turn the switch to the right and take 'Water Inlet' position while it is OFF position.
- When the appliance is at 'Water Inlet' position,the water enter to the appliance's bowl,when water entrance completed,bowl resistance start to operate in order to heat the water that is in bowl.After heating process 'Ready Lamp' signals.
- Put enough detergent in to the storage.
- Push the basket that you put dirty dishes to the inside and choose suitable washing program.
- Washing process; for hot water and washing with detergent (minimum 55°C) ,for rinsing with hot water (minimum 80°C).
- After washing process,the appliance will start rinsing process automatically.(Do not open the lid before rinsing process ended).
- At the end of program open the lid and take off the washed basket.Place the other prepared basket.Machine will do washing and rinsing processes at choosen program.

UTENSIL WASHER

E CLEANING & MAINTENANCE

- CLEANING AND MAINTENANCE AFTER EVERY USE

- Always turn off the appliance and disconnect from the power supply before cleaning.
- Evacuate the water by taking off the stopple after every use.(If the machine has evacuation pump use the pump).
- Clean all surfaces of the appliance with hot soapy water after every use.Rinse and dry with a wet cloth.
- Clean the control panel with soft moisty cloth,if necessary use ineffective detergent.
- Do not use abrasive cleaning chemicals as these can leave harmful residues.
- Do not clean the appliance by spraying water directly,otherwise electric motor may get damaged.

- PERIODIC CLEANING AND MAINTENANCE

- Maintenance should be done by qualified person.
- Always leave the outlet opened when the appliance is not operated.
- Clean the limes of the burner,inner surface of the washing tank and water pipes once or twice in a year.
- Clean the limes with using rinsing and washing nozzles once in a month by using vinegar or lime remover.
- Clean the filters in the appliance once in a week.After cleaning be sure that thumbscrew is compressed.
- Clean the appliance's fountains once in 15 days by detaching it.
- Clean the appliance's evacuation stopple and evacuation hoses once in 15 days.

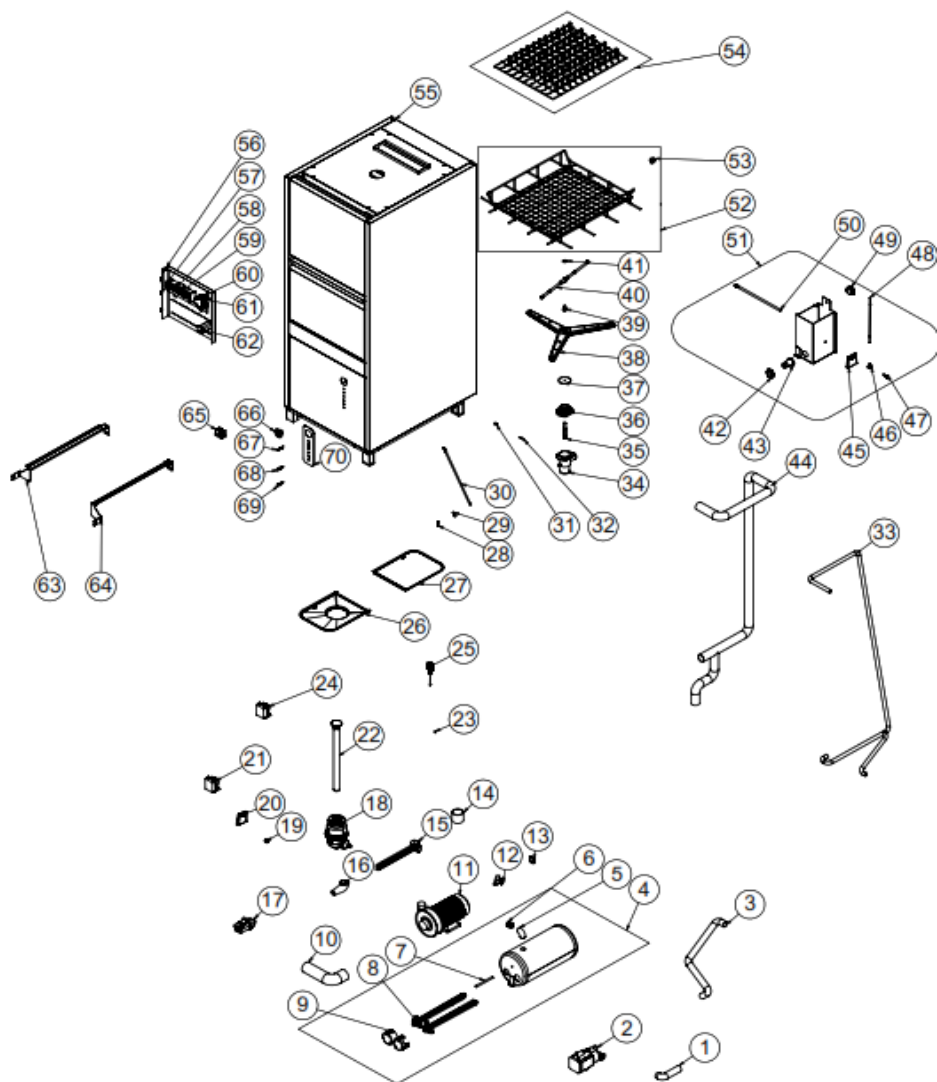
F TROUBLESHOOTING

<p>DISHES ARE NOT WASHED WELL</p>	<ol style="list-style-type: none"> 1. Clean the pulling filter if it is dirty. 2. Check the fountains if they are accumulated with residues or not. 3. Check the amount of detergent. 4. If the chosen washing program is too less,repeat the program. 5. Pay attention the storage heat to be 55°C - 65°C. 6. Be sure that the dishes are placed correctly on baskets. 7. Check the amount of polisher.Check that if there is polisher or not if necessary add some. 8. Check the amount of polisher settings. 9. Pay attention the water heat to be 70°C.
<p>MIST OVER ON CUPS</p>	<ol style="list-style-type: none"> 1. If there isn't polisher,add some. 2. Check the amount of polisher. 3. Take off the cup basket after washing process ended.
<p>STAINS ON CUP</p>	<ol style="list-style-type: none"> 1. Only use products that are not foaming for the professional dishwashers.
<p>MUCH FOAM AT STORAGE</p>	<ol style="list-style-type: none"> 1. Pay attention the washing water not to be less than 50°C. 2. Check the amount of detergent . 3. If foaming detergent is used,pour it and rinse the storage till the foams are lost.
<p>WASHING OR RINSING HANDLES ARE TURNING SLOWLY</p>	<ol style="list-style-type: none"> 1. Take off washing handles and clean them. 2. Clean the washing pump absorbing filter.
<p>VISCIDITY ON CUPS</p>	<ol style="list-style-type: none"> 1. Reduce the amount of polisher.
<ul style="list-style-type: none"> • If dishwashing is not done at suitable quality • If any function of security doesn't work <ul style="list-style-type: none"> • Do not use the appliance. 	

***If these problems are still going on,contact with our authorized services.**

UTENSIL WASHER

G SPARE PART LIST-EXPLODING DRAWING



EMP.UW-80

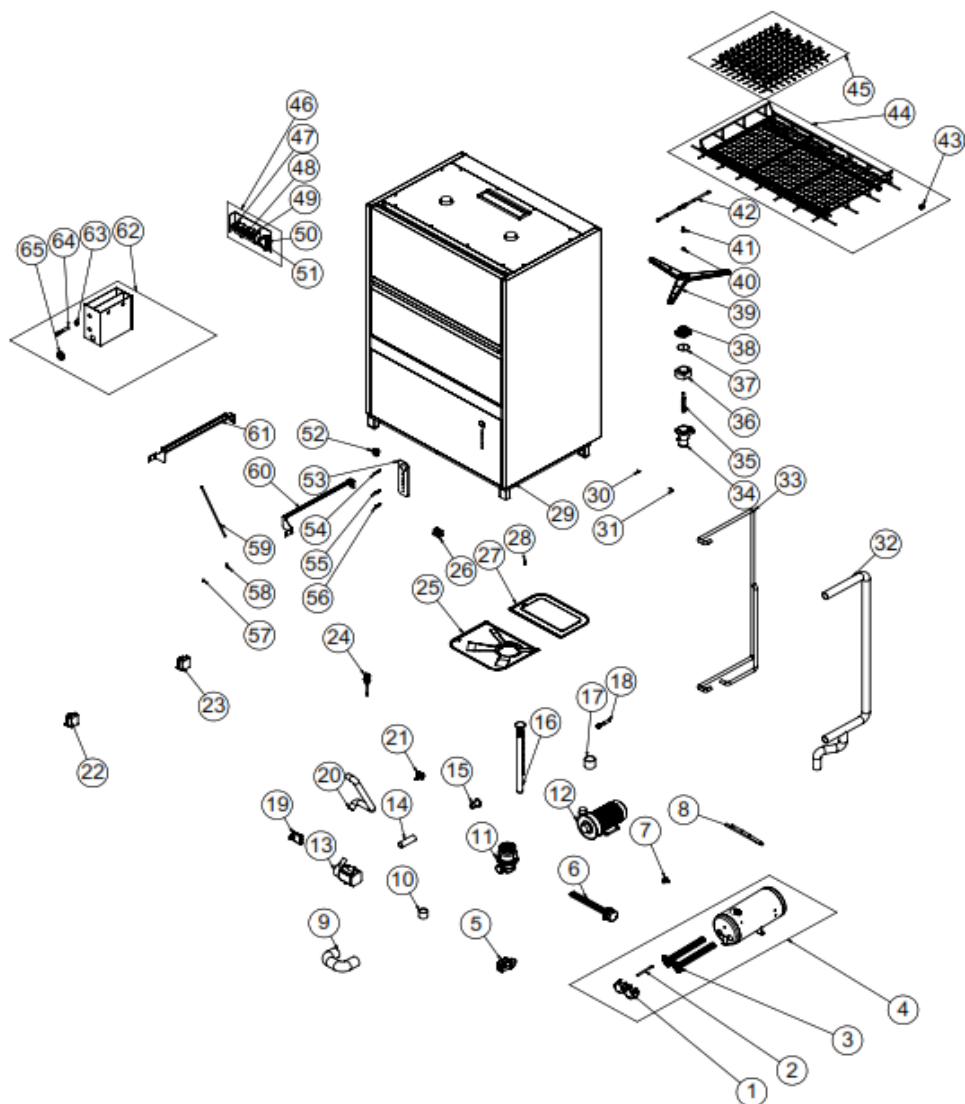
G SPARE PART LIST-EXPLODING DRAWING
PRODUCT CODE : EMP.UW-80

NO	PRODUCT NAME	P.CODE
1	PUMP FILLING HOSE	M.MEK-TES-HRT-083
2	WASHING MOTOR	M.ELK-MTR-PMP-003
3	PRESSURE HOSE	M.MEK-TES-HRT-084
4	BOILER	ARA-ERS.BYM-0008
5	BRACKET	ERS.M.MEK-TES-INX-002
6	BOILER HOSE INLET	YTL-ERS.BYM-KS-0109
7	THERMOSTAT PIPE	YBR-ERS.BYM-KS-0003
8	380/220V 9000W L:42CM RESISTANCE	M.ELK-RZS-BRU-BYM-019
9	RESISTANCE COVER	M.ENJ-ERS-PLS-BYM-025
10	ENGINE HOSE	M.MEK-TES-HRT-082
11	WATER PUMP	M.ELK-MTR-PMP-013
12	VALVE (14 LT)	M.ELK-SLN-PLS-001
13	evacuation rubber	M.ENJ-ERS-LST-040
14	FOUNTAIN STOP	M.MEK-TES-HRT-081
15	BOILER RESISTANCE 380V-6000W	M.ELK-RZS-BRU-BYM-014
16	DRAIN HOSE	M.MEK-TES-HRT-073
17	DRAIN PUMP	M.ELK-MTR-PMP-002
18	DISCHARGE GROUP	M.ENJ-ERS-PLS-BYM-125
19	AIR TRAP LOCATION	M.ENJ-ERS-PLS-BYM-015
20	AIR TRAP	M.ENJ-ERS-PLS-BYM-019
21	DETERGENT PUMP	M.ELK-MTR-PMP-006
22	DRAIN PLUG	YBR-ERS.BYM-KS-0035
23	MAGNET	M.MIK-ERS-006
24	POLISHING PUMP	M.ELK-MTR-PMP-007
25	THERMOSTAT 0-90°C	M.ELK-MEK-TRM1-008
26	PRE FILTER SHEET	M.MTS-BYM-025
27	REAR FILTER SHEET	M.MTS-BYM-026
28	STOP ELEMENT	YTL-ERS.BYM-KS-0107
29	SHAFT BUSHING	YTL-ERS.BYM-KS-0092
30	COVER SHAFT	YTL-ERS.BYM-KS-0091
31	HINGE BUSH	YTL-ERS.BYM-KS-0087
32	HINGE SCREW	YTL-ERS.BYM-KS-0088
33	CLEAN WATER HOSE	M.MEK-TES-HRT-085

UTENSIL WASHER

34	WASHING CENTER	M.ENJ-ERS-PLS-BYM-122
35	SUB SHAFT	M.AKS-GNL-012
36	CENTER FLANGE	M.ENJ-ERS-PLS-BYM-123
37	ORING	M.CNT-ORG-038
38	3 WASHING ARM	M.AKS-GNL-011
39	SPRAY SCREW	YTL-ERS.BYM-KS-0089
40	RINSE ARM	M.ENJ-ERS-PLS-BYM-124
41	SPRAY NUT	YTL-ERS.BYM-KS-0106
42	WEDGE NUT	M.ENJ-ERS-PLS-BYM-012
43	WEDGE LOCATION	M.ENJ-ERS-PLS-BYM-011
44	WASHING HOSE	M.MEK-TES-HRT-086
45	AIR TRAP	M.ENJ-ERS-PLS-BYM-019
46	AIR TRAP LOCATION	M.ENJ-ERS-PLS-BYM-015
47	AIR TRAP SHAFT	YTL-ERS.BYM-KS-0002
48	PROCESTAT HOSE	HTS-HRT-008
49	SWITCH HD-505 AT	M.ELK-MUH-016
50	OUTPUT PIPE	YBR-ERS.BYM-KS-0004
51	WAREHOUSE	ARA-ERS.BYM-0029
52	LOWER BASKET	ARA-ERS.BYM-0009
53	BASKET WHEEL	YTL-ERS.BYM-KS-0099
54	BASKET	ARA-ERS.BYM-0025
55	CHASSIS	-
56	ELECTRIC PANEL	M.ELK-PNO-BYM-011
57	HORIZONTAL SENSOR	M.ELK-SWC-KTG-005
58	LC1K0901M7 CONTACTOR	ERS.M.ELK-KNT-KNT-020
59	CONTACTOR LC1D09M7	ERS.M.ELK-KNT-KNT-027
60	evacuation time relay	M.ELK-KNT-ROL-026
61	TIMING RELAY	M.ELK-KNT-ROL-024
62	SWITCH	M.ELK-SLT-PKO-011
63	RIGHT INSIDE HOPPER SLIDE SHEET	YSC-ERS.BYM-LZ-0422
64	LEFT INNER CHAMBER SLIDE SHEET	YSC-ERS.BYM-LZ-0423
65	ROLLER FOOT	ERS.M.AKS-AYK-PLS-005
66	SWITCH BUTTON	M.AKS-DGM-MUH-002
67	GREEN WARNING LAMP	ERS.M.ELK-LMB-SNY-001
68	YELLOW WARNING LAMP	ERS.M.ELK-LMB-SNY-003
69	RED WARNING LAMP	M.ELK-LMB-SNY-009
70	PANEL LABEL	M.AKS-ETK-LKS-ERS-BYM-010

G SPARE PART LIST-EXPLODING DRAWING



UTENSIL WASHER

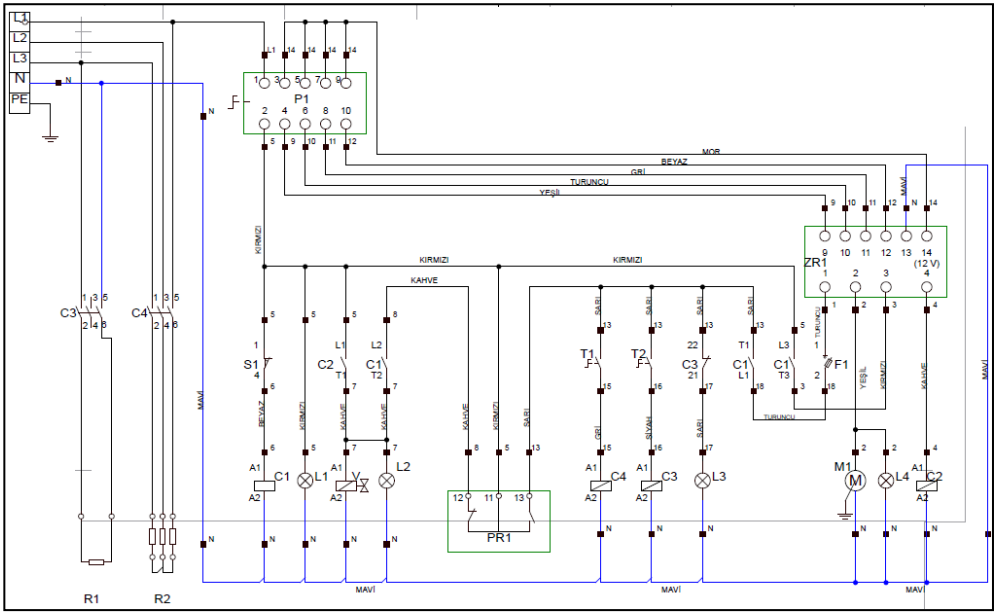
G SPARE PART LIST-EXPLODING DRAWING

PRODUCT CODE: EMP.UW-130		
NO	PRODUCT NAME	P.CODE
1	RESISTANCE COVER	M.ENJ-ERS-PLS-BYM-028
2	THERMOSTAT PIPE	YBR-ERS.BYM-KS-0003
3	BOILER RESISTANCE 380V-6000W	M.ELK-RZS-BRU-BYM-014
4	BOILER	ARA-ERS.BYM-0010
5	DRAIN PUMP	M.ELK-MTR-PMP-002
6	380/220V 9000W L:42CM RESISTANCE	M.ELK-RZS-BRU-BYM-019
7	1/2" BRACKET	M.MEK-TES-SRI-007
8	VALVE MOTOR HOSE	M.MEK-TES-HRT-022
9	ENGINE HOSE	M.MEK-TES-HRT-072
10	FILTER HOSE	M.MEK-TES-HRT-096
11	DISCHARGE GROUP	M.ENJ-ERS-PLS-BYM-125
12	WATER PUMP	M.ELK-MTR-PMP-013
13	WASHING MOTOR	M.ELK-MTR-PMP-003
14	PUMP FILLING PIPE	M.MEK-TES-HRT-074
15	WEDGE LOCATION	M.ENJ-ERS-PLS-BYM-011
16	DRAIN PLUG	YBR-ERS.BYM-KS-0035
17	FOUNTAIN STOP	M.MEK-TES-HRT-081
18	FLOAT	M.ELK-SWC-ERS-007
19	AIR TRAP	M.ENJ-ERS-PLS-BYM-019
20	ENGINE PRESSURE HOSE	M.MEK-TES-HRT-079
21	VALVE (14 LT)	M.ELK-SLN-PLS-001
22	DETERGENT PUMP	M.ELK-MTR-PMP-006
23	POLISHING PUMP	M.ELK-MTR-PMP-007
24	THERMOSTAT 0-90°C	M.ELK-MEK-TRM1-008
25	PRE FILTER SHEET	M.MTS-BYM-027
26	ROLLER FOOT	ERS.M.AKS-AYK-PLS-005
27	REAR FILTER SHEET	M.MTS-BYM-028
28	STOP ELEMENT	YTL-ERS.BYM-KS-0107
29	CHASSIS	-
30	HINGE BUSH	YTL-ERS.BYM-KS-0087
31	HINGE SCREW	YTL-ERS.BYM-KS-0088

32	WASHING HOSE	M.MEK-TES-HRT-076
33	WATER HOSE	M.MEK-TES-HRT-078
34	WASHING CENTER	M.ENJ-ERS-PLS-BYM-122
35	CENTER SHAFT	YTL-ERS.BYM-KS-0090
36	UPGRADE PLASTIC	YTL-ERS.BYM-KS-0085
37	ORING	M.CNT-ORG-038
38	CENTER FLANGE	M.ENJ-ERS-PLS-BYM-123
39	3 WASHING ARM	M.AKS-GNL-011
40	SPRAY NUT	YTL-ERS.BYM-KS-0106
41	SPRAY SCREW	YTL-ERS.BYM-KS-0089
42	RINSE ARM	M.ENJ-ERS-PLS-BYM-124
43	BASKET WHEEL	YTL-ERS.BYM-KS-0099
44	LOWER BASKET	ARA-ERS.BYM-0011
45	BASKET	ARA-ERS.BYM-0026
46	ELECTRIC PANEL	M.ELK-PNO-BYM-012
47	HORIZONTAL SENSOR	M.ELK-SWC-KTG-005
48	LC1K0901M7 CONTACTOR	ERS.M.ELK-KNT-KNT-020
49	CONTACTOR LC1D09M7	ERS.M.ELK-KNT-KNT-027
50	evacuation time relay	M.ELK-KNT-ROL-026
51	TIMING RELAY	M.ELK-KNT-ROL-024
52	SWITCH BUTTON	M.AKS-DGM-MUH-002
53	PANEL LABEL	M.AKS-ETK-LKS-ERS-BYM-010
54	GREEN WARNING LAMP	ERS.M.ELK-LMB-SNY-001
55	YELLOW WARNING LAMP	ERS.M.ELK-LMB-SNY-003
56	RED WARNING LAMP	M.ELK-LMB-SNY-009
57	MAGNET	M.MIK-ERS-006
58	SHAFT BUSHING	YTL-ERS.BYM-KS-0092
59	COVER SHAFT	YTL-ERS.BYM-KS-0091
60	RIGHT INSIDE HOPPER SLIDE SHEET	YSC-ERS.BYM-LZ-0381
61	LEFT INNER CHAMBER SLIDE SHEET	YSC-ERS.BYM-LZ-0382
62	WAREHOUSE	ARA-ERS.BYM-0027
63	FLOAT BUSH	YTL-ERS.BYM-KS-0120
64	FLOAT	M.ELK-SWC-ERS-007
65	WEDGE NUT	M.ENJ-ERS-PLS-BYM-012

UTENSIL WASHER

H ELECTRIC CIRCUIT SCHEMA



P1	S1	C1	C2	C3	C4	T1	ZR1	T2
5 Progressive Commutator	Magnetic Door Sensor	Boiler Contactor 230V	Washing Contactor 230V	Lid Relay 230V	Washinh Relay 230V	Boiler Thermostat (30-90°C)	5 Cycle-cycle Relay (İTER RR-5TG)	Washing Thermostat (30-90°C)

L1	L2	L3	L4	PR1	M1	R1	R2	F1	V
Start lamp	Rinsing lamp	Water is heated lamp	Washing lamp	Prossestat	Washing Motor 0,55 KW 230V	Washing Resistance 2500W 230V	Boiler Resistance 3x2000W 380V	ZR1 Fuse 500mA	Selenoid valve 230V