



TOASTER (ELECTRICAL)

CONTENTS

A	GENERAL INFORMATION	Page 2
A1	PRODUCT DESCRIPTION	Page 3
A2	TECHNICAL INFORMATION	Page 3
A3	TRANSPORTATION	Page 4
A4	UNPACKING	Page 4
B	INSTALLATION	Page 4
C	SAFETY INSTRUCTIONS	Page 5
D	OPERATION	Page 6
E	CLEANING & MAINTENANCE	Page 7
F	TROUBLESHOOTING	Page 8
G	SPARE PART LIST- EXPLODING DRAWING	Page 9
H	ELECTRIC CIRCUIT SCHEMA	Page 14

A GENERAL INFORMATION

Before installing the appliance, read operation and maintenance instructions carefully. Wrong installation and part changing may damage the product or may cause injury on people. These are not in our company's responsibility to damage the appliance intentionally, negligence, detriments because of disobeying instructions and regulations, wrong connections. Unauthorized intervention to appliance invalidates the warranty.

1. This instruction manual should be kept in a safe place for future reference.
2. **Installation should be made in accordance with ordinances and security rules of that country by a qualified service personnel.**
3. This appliance has to be used by trained person.
4. Please turn off the appliance immediately in the event of malfunction or failure. The appliance should be repaired only by authorized service personnel. Please demand original spare part.

TOASTER (ELECTRICAL)

A1 PRODUCT DESCRIPTION

*The Professional Toaster (Electrical) ,that provides high efficiency has been designed to be used in industrial kitchens.

Product Code	Dimensions (mm)	Weight (kg)	Packaging Dimensions (mm)
EMP.101	400x360x210	30	470x460x330
EMP.102	540x300x210	33	550x460x330
EMP.103	540x300x210	35	610x460x330

A2 TECHNICAL INFORMATION

Product Code	Model	Power (KW)	Operating Voltage (V)	Cable (mm ²)	Fuse (A)
EMP.101	Single	1,75	220	3x2,5	10
EMP.102	Block	1,95	220	3x2,5	14
EMP.103	Double	2,95	220	3x2,5	19

A3 TRANSPORTATION

*This appliance can be moved by hand from area to area. Do not crash and drop the appliance while transporting.

A4 UNPACKING

*Please unpack the package according to the security codes and ordinances of current country and get rid from the pack. Parts which contacts with food are produced by stainless steel. All plastic parts are marked by material's symbol.

*Please check that all the parts of appliance had come completely and if they are damaged or not during the shipping.

B INSTALLATION

*Please place the product to straight and sturdy ground, please take necessary steps against possibility of overturn.

*Technician who will serve for installation and service for the appliance must be professional on this subject and must have installation and service licenses by the company.

*Connection to Electric Power Supply must be done by authorized person.

*Please be sure that the voltage connected to appliance must be equal with the voltage which is on appliance's label.











This appliance must be connected to an earthed outlet in accordance with safety rules and standards.

*Appliance's earthing must be connected to earthing line on panel which is nearest to electric installation.

*Connection to the main fuse and leak current fuse must be done in accordance with the current regulations.

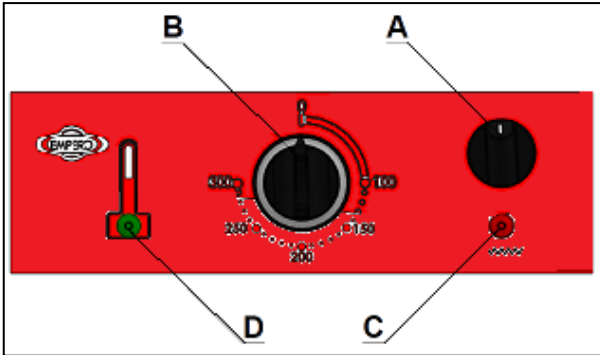
TOASTER (ELECTRICAL)

C SAFETY INSTRUCTIONS

-  *Do not use the appliance in insufficient lighted place.
-  *Do not touch the moving attachments while the appliance operates.
-  *Do not install the appliance in the presence of flammable or explosive materials.
-  *Do not operate the appliance when the machine is empty.
-  *Do not load so less or more than appliance's capacity.
-  *Do not attempt to use the appliance without suitable protective equipments.
-  *Because of any reason if there is a fire or flame flare where the appliance is used, turn off all gas valves and electric contactor switch quickly and use fire extinguisher. Never use water to extinguish the fire.
-  *All the damages because of not having earthing connection will not be on warranty.

D OPERATION

*Control Panel;



- A : Switch
- B : Thermostat
- C : Signal lamp
- D : Indicator lamp

*Operating;

- Before operating the appliance, clean cooking surfaces and body with a moist cloth. Lubricate the upper and lower stands with liquid.
- Plug in the appliance.
- Switch ON.
- Turn the thermostat switch to reach desired temperature (0-300°C). Pay attention to temperature indicator data.
- When the temperature reaches to indicator temperature, the thermostat light will be off.
- There may be a smell due to heater component and isolation material when the appliance is operated for the first time. Therefore before operating the appliance set all thermostats to 250 °C and operate it for 45 min. when it is empty.
- Open the appliance's upper lid.
- When the appliance reaches 300°C, cooking process will happen between 1-3 min. according to type of process.
- In order to turn off the appliance, switch off and switch the thermostats to (0) position.

TOASTER (ELECTRICAL)

E CLEANING & MAINTENANCE

➤ **CLEANING AND MAINTENANCE AFTER EVERY USE**

- Always turn off the appliance and disconnect from the power supply before cleaning.
- Clean the surface of the appliance with moist cloth after every use.
- Clean the grills with spatula after every use.
- Do not use abrasive cleaning chemicals as these can leave harmful residues.
- Do not clean the appliance by spraying water directly, otherwise electric motor may get damaged.

➤ **PERIODIC CLEANING AND MAINTENANCE**

- Maintenance should be done by qualified person.
- Get the periodic maintenance of the appliance once in every 15 days.
- Check the cooking surfaces that are ribbed casting according to frequency of use. Change the surfaces that have been deformed .

F TROUBLESHOOTING**THE APPLIANCE DOESN'T OPERATE**

1. Check if the appliance is plugged in.
2. Check the electrical connections and voltage.
3. Check if the fuse is on or off.

THE APPLIANCE STOPPED

1. The appliance can stop due to low voltage. In this situation check the voltage.

THE APPLIANCE IS NOT HEATED

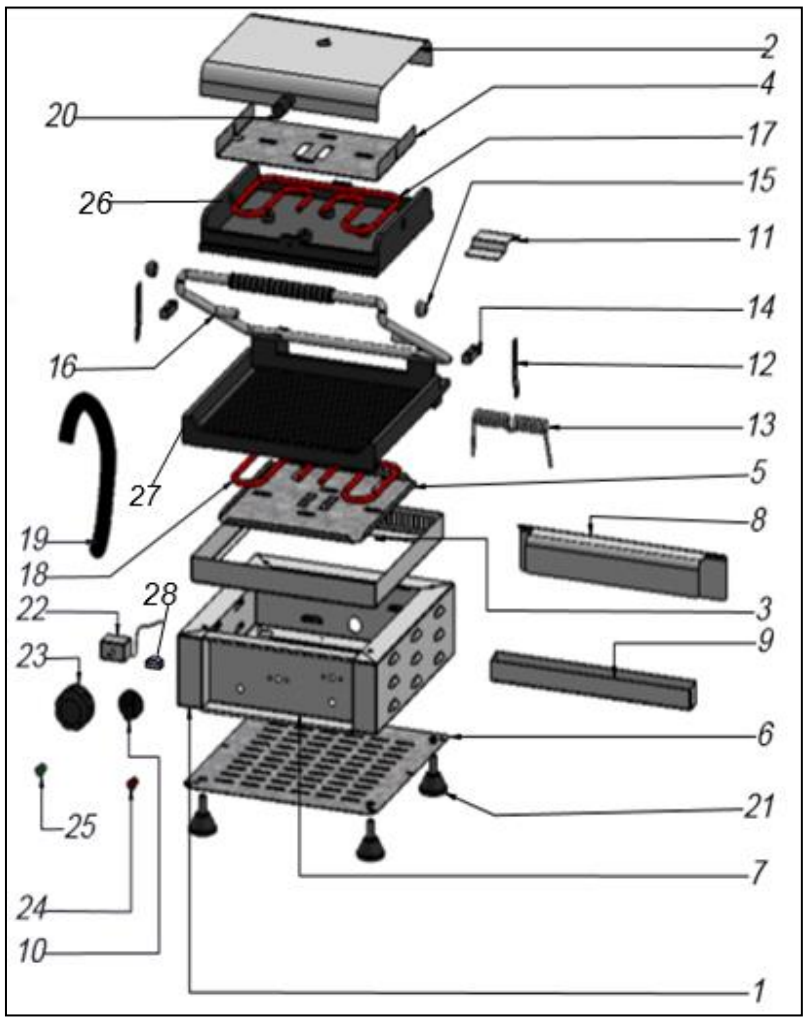
1. Check the appliance's resistances.
2. Check the thermostat switch.

- If toasting is not done at suitable quality
- If any function of security doesn't work
 - Do not use the appliance.

***If these problems are still going on, contact with our authorized services.**

TOASTER (ELECTRICAL)

G SPARE PART LIST-EXPLODING DRAWING



EMP.101 - EMP.102

G SPARE PART LIST-EXPLODING DRAWING

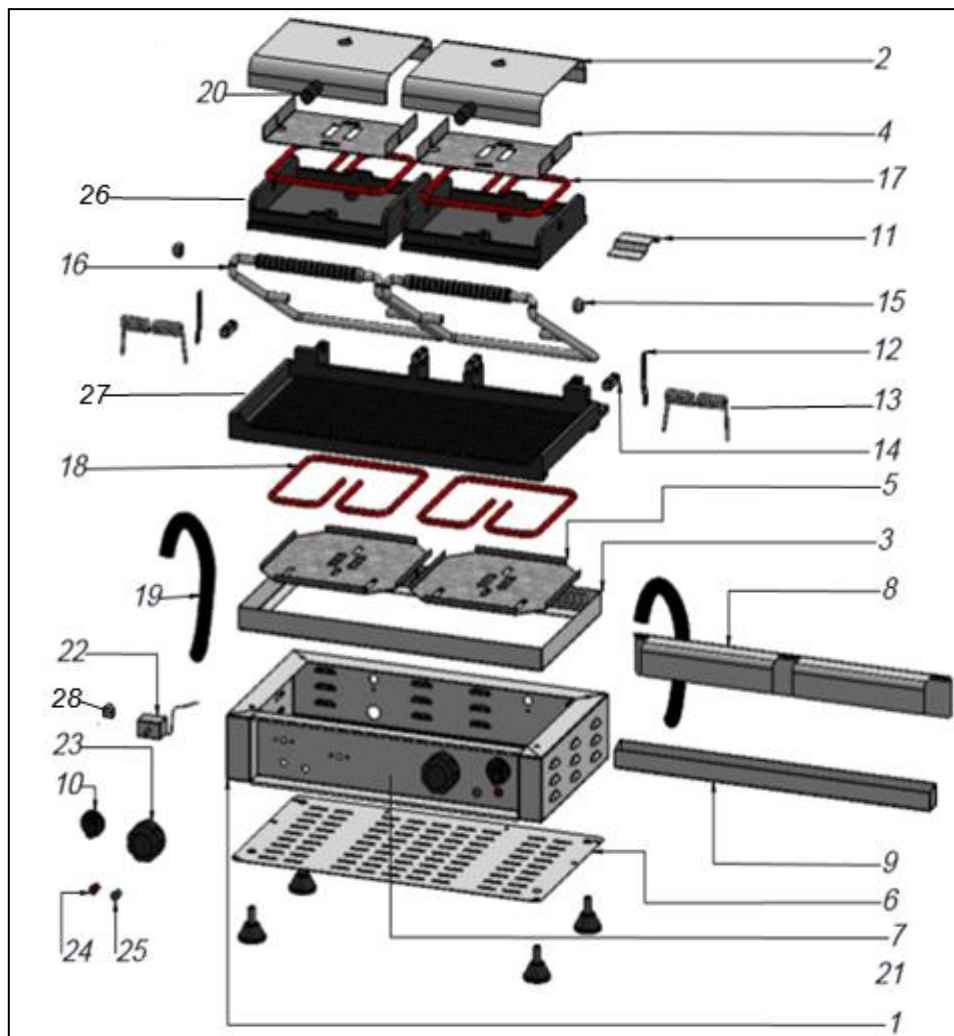
PRODUCT CODE: EMP.101		
NO	PRODUCT NAME	P.CODE
1	BASE FRAME	Y.EMP.101.001
2	TOP LID	Y.EMP.101.002
3	BASE	Y.EMP.101.003
4	TOP RESISTANCE HOLDER	Y.EMP.101.004
5	BOTTOM RESISTANCE HOLDER	Y.EMP.101.005
6	VENTILATION GRILL	Y.EMP.101.006
7	CONTROL PANEL	Y.EMP.101.007
8	SPRING HIDER	Y.EMP.101.008
9	LUBRICATOR	Y.EMP.101.009
10	SWITCH	Y.EMP.101.010
11	CLEANING PART	Y.EMP.101.011
12	SCISSOR	Y.EMP.101.012
13	SPRING	Y.EMP.101.013
14	HOLDER HANDLE FIXING WEDGE	Y.EMP.101.014
15	HOLDER HANDLE FIXING RING	Y.EMP.101.015
16	HOLDER HANDLE	Y.EMP.101.016
17	TOP RESISTANCE	Y.EMP.101.017
18	BOTTOM RESISTANCE	Y.EMP.101.018
19	TOP RESISITANCE CABLE SAFETY SPRING	Y.EMP.101.019
20	TOP CASTING HANDLE	Y.EMP.101.020
21	FEET	Y.EMP.101.021
22	THERMOSTAT	Y.EMP.101.022
23	THERMOSTAT BUTTON	Y.EMP.101.023
24	ON-OFF LED (RED)	Y.EMP.101.024
25	THERMOSTAT LED (GREEN)	Y.EMP.101.025
26	TOP PLATFORM	Y.EMP.101.026
27	BOTTOM PLATFORM	Y.EMP.101.027
28	SWITCH	Y.EMP.101.028

TOASTER (ELECTRICAL)

G SPARE PART LIST-EXPLODING DRAWING

PRODUCT CODE: EMP.102		
NO	PRODUCT NAME	P.CODE
1	BASE FRAME	Y.EMP.102.001
2	TOP LID	Y.EMP.102.002
3	BASE	Y.EMP.102.003
4	TOP RESISTANCE HOLDER	Y.EMP.102.004
5	BOTTOM RESISTANCE HOLDER	Y.EMP.102.005
6	VENTILATION GRILL	Y.EMP.102.006
7	CONTROL PANEL	Y.EMP.102.007
8	SPRING HIDER	Y.EMP.102.008
9	LUBRICATOR	Y.EMP.102.009
10	SWITCH	Y.EMP.102.010
11	CLEANING PART	Y.EMP.102.011
12	SCISSOR	Y.EMP.102.012
13	SPRING	Y.EMP.102.013
14	HOLDER HANDLE FIXING WEDGE	Y.EMP.102.014
15	HOLDER HANDLE FIXING RING	Y.EMP.102.015
16	HOLDER HANDLE	Y.EMP.102.016
17	TOP RESISTANCE	Y.EMP.102.017
18	BOTTOM RESISTANCE	Y.EMP.102.018
19	TOP RESISITANCE CABLE SAFETY SPRING	Y.EMP.102.019
20	TOP CASTING HANDLE	Y.EMP.102.020
21	FEET	Y.EMP.102.021
22	THERMOSTAT	Y.EMP.102.022
23	THERMOSTAT BUTTON	Y.EMP.102.023
24	ON-OFF LED (RED)	Y.EMP.102.024
25	THERMOSTAT LED (GREEN)	Y.EMP.102.025
26	TOP PLATFORM	Y.EMP.102.026
27	BOTTOM PLATFORM	Y.EMP.102.027
28	SWITCH	Y.EMP.102.028

G SPARE PART LIST-EXPLODING DRAWING

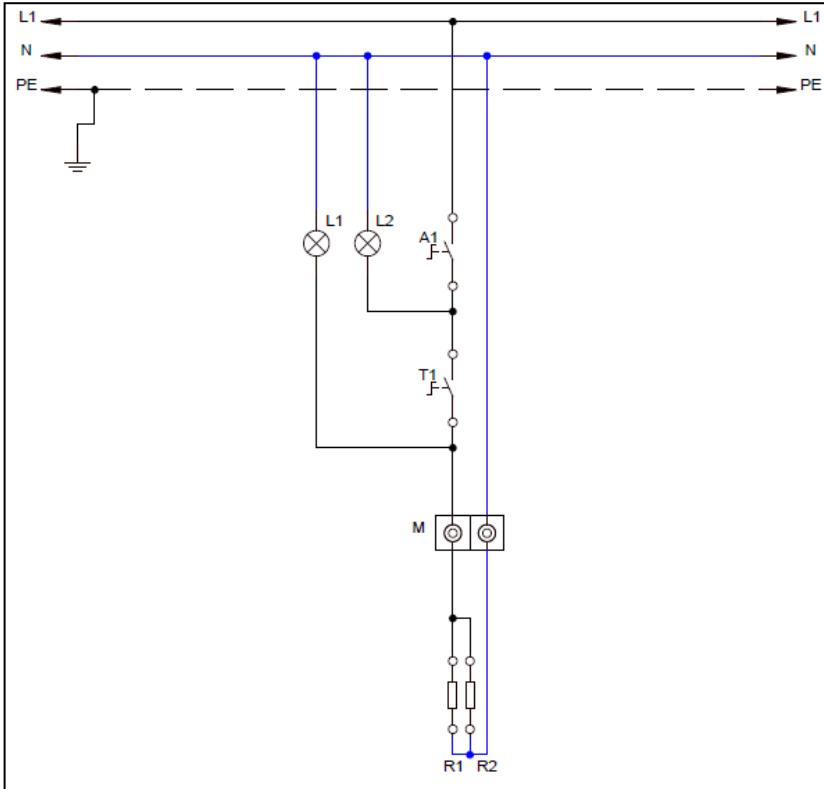


TOASTER (ELECTRICAL)

G SPARE PART LIST-EXPLODING DRAWING

PRODUCT CODE: EMP.103		
NO	PRODUCT NAME	P.CODE
1	BASE FRAME	Y.EMP.103.001
2	TOP LID	Y.EMP.103.002
3	BASE	Y.EMP.103.003
4	TOP RESISTANCE HOLDER	Y.EMP.103.004
5	BOTTOM RESISTANCE HOLDER	Y.EMP.103.005
6	VENTILATION GRILL	Y.EMP.103.006
7	CONTROL PANEL	Y.EMP.103.007
8	SPRING HIDER	Y.EMP.103.008
9	LUBRICATOR	Y.EMP.103.009
10	SWITCH	Y.EMP.103.010
11	CLEANING PART	Y.EMP.103.011
12	SCISSOR	Y.EMP.103.012
13	SPRING	Y.EMP.103.013
14	HOLDER HANDLE FIXING WEDGE	Y.EMP.103.014
15	HOLDER HANDLE FIXING RING	Y.EMP.103.015
16	HOLDER HANDLE	Y.EMP.103.016
17	TOP RESISTANCE	Y.EMP.103.017
18	BOTTOM RESISTANCE	Y.EMP.103.018
19	TOP RESISITANCE CABLE SAFETY SPRING	Y.EMP.103.019
20	TOP CASTING HANDLE	Y.EMP.103.020
21	FEET	Y.EMP.103.021
22	THERMOSTAT	Y.EMP.103.022
23	THERMOSTAT BUTTON	Y.EMP.103.023
24	ON-OFF LED (RED)	Y.EMP.103.024
25	THERMOSTAT LED (GREEN)	Y.EMP.103.025
26	TOP PLATFORM	Y.EMP.103.026
27	BOTTOM PLATFORM	Y.EMP.103.027
28	SWITCH	Y.EMP.103.028

H ELECTRIC CIRCUIT SCHEMA

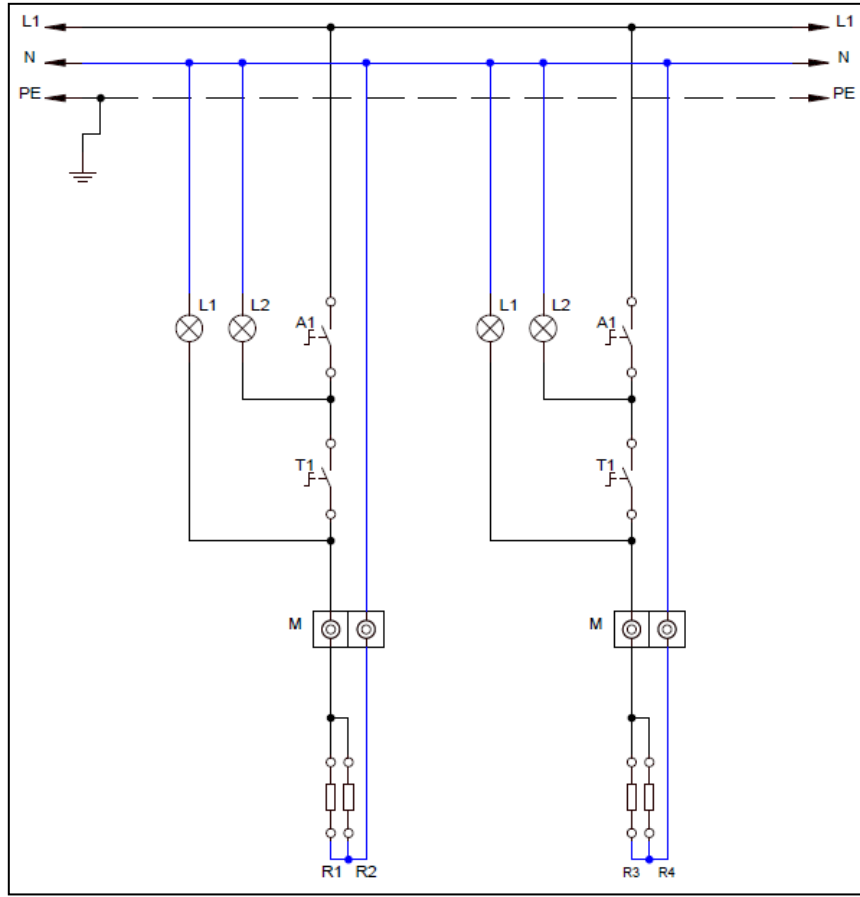


EMP.101- EMP.102

L2	M	A1	T1	R1	R2	L1
Key Open Lamp	Ceramic Terminal Block	ON/OFF Switch	Thermostat (100-300°C)	Lower Resistance	Upper Resistance	Thermostat Open Lamp

TOASTER (ELECTRICAL)

H ELECTRIC CIRCUIT SCHEMA



EMP.103

L2	M	A1	T1	R1.R3	R2.R4	L1.L2
Key Open Lamp	Ceramic Terminal Block	ON/OFF Switch	Thermostat (100-300°C)	Lower Resistance 875 W	Upper Resistance 875 W	Thermostat Open Lamp