

CONTENTS

A	GENERAL INFORMATION	Page 2
A1	PRODUCT DESCRIPTION	Page 3
A2	TECHNICAL INFORMATION	Page 3
A3	TRANSPORTATION	Page 4
A4	UNPACKING	Page 4
B	INSTALLATION	Page 4
C	SAFETY INSTRUCTIONS	Page 5
D	OPERATION	Page 6
E	CLEANING & MAINTENANCE.....	Page 7
F	TROUBLESHOOTING	Page 8
G	SPARE PART LIST- EXPLODING DRAWING	Page 9
H	ELECTRIC CIRCUIT SCHEMA	Page 13

A GENERAL INFORMATION

Before installing the appliance, read operation and maintenance instructions carefully. Wrong installation and part changing may damage the product or may cause injury on people. These are not in our company's responsibility to damage the appliance intentionally, negligence, detriments because of disobeying instructions and regulations, wrong connections. Unauthorized intervention to appliance invalidates the warranty.

1. This instruction manual should be kept in a safe place for future reference.
- 2. Installation should be made in accordance with ordinances and security rules of that country by a qualified service personnel.**
3. This appliance has to be used by trained person.
4. Please turn off the appliance immediately in the event of malfunction or failure. The appliance should be repaired only by authorized service personnel. Please demand original spare part.

AYRAN MAKER

A1 PRODUCT DESCRIPTION

*The Professional Ayran Maker, that provides high efficiency has been designed to be used in industrial kitchens.

Product Code	Dimensions (mm)	Weight (kg)	Packaging Dimensions (mm)
EMP.AYR.40	660x600x1528	78	810x810x1680
EMP.AYR.40-P	660x600x1528	78	810x810x1680

A2 TECHNICAL INFORMATION

Product Code	Capacity (Lt)	Power (Kw)	Operat. Voltage (V)	Cable (mm ²)	Fuse (A)	Accessories
EMP.AYR.40	40	200	220	3x1,5	10	1. Body colour options 2. Advertisement & Trademark covering
EMP.AYR.40-P	40	200	220	3x1,5	10	Stainless steel body

A3 TRANSPORTATION

*This appliance can not be moved by hand from area to area. It must be moved on pallet with forklift truck.

A4 UNPACKING

*Please unpack the package according to the security codes and ordinances of current country and get rid from the pack. Parts which contacts with food are produced by stainless steel. All plastic parts are marked by material's symbol.

*Please check that all the parts of appliance had come completely and if they are damaged or not during the shipping.

B INSTALLATION

*Please place the product to straight and sturdy ground, please take necessary steps against possibility of overturn.

*Technician who will serve for installation and service for the appliance must be professional on this subject and must have installation and service licenses by the company.

*Connection to Electric Power Supply must be done by authorized person.

*Please be sure that the voltage connected to appliance must be equal with the voltage which is on appliance's label.













This appliance must be connected to an earthed outlet in accordance with safety rules and standards.

*Appliance's earthing must be connected to earthing line on panel which is nearest to electric installation.

*Connection to the main fuse and leak current fuse must be done in accordance with the current regulations.

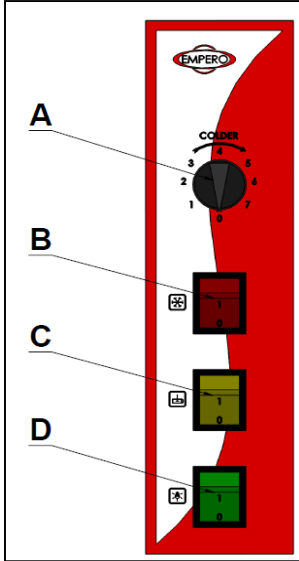
AYRAN MAKER

C SAFETY INSTRUCTIONS

-  *Do not use the appliance in insufficient lighted place.
-  *Do not touch the moving attachments while the appliance operates.
-  *Do not install the appliance in the presence of flammable or explosive materials.
-  *Do not operate the appliance when the machine is empty.
-  *Do not load so less or more than appliance's capacity .
-  *Do not attempt to use the appliance without suitable protective equipments.
-  *Because of any reason if there is a fire or flame flare where the appliance is used,turn off all gas valves and electric contactor switch quickly and use fire extinguisher .Never use water to extinguish the fire.
-  *All the damages because of not having earthing connection will not be on warranty.
-  *It may cause damage on the ayran surface to stop recirculation of the appliance in too hot days.
-  *Do not leave ayran in the tank from previous day.

D OPERATION

*Control Panel;



A : Heat setting button

B : ON/OFF switch

C : Drainage switch

D : Inner lighting lamp switch

*Operating;

- Wash the ayran tank before using the appliance.Clean the showcase with moist cloth and dry.
- Plug in the appliance and switch to (I) position.
- Pour the ayran that is prepared into the tank.
- Set the desired temperature by using heat setting button.
- In order to take off the ayran that is served cold,place the cup to the lower filter and fill from the tap.
- In order to activate inner lighting lamp switch to (I) position.
- In order to drain the ayran from tank switch the drainage switch to (I) position.
- After the operation completed,switch to (0) position and unplug the appliance.

AYRAN MAKER

E CLEANING & MAINTENANCE

➤ **CLEANING AND MAINTENANCE AFTER EVERY USE**

- Always turn off the appliance and disconnect from the power supply before cleaning.
- Clean the ayran tank after every use. Then drain the cleaning water through drainage valve.
- Pay attention the cleaning materials to be hygienic.
- Do not use abrasive cleaning chemicals as these can leave harmful residues.
- Do not clean the appliance by spraying water directly, otherwise electric motor may get damaged.

➤ **PERIODIC CLEANING AND MAINTENANCE**

- Maintenance should be done by qualified person.
- Get the periodic maintenance of the appliance once in every 15 days.
- Clean the appliance's showcase with moist cloth and dry according to frequency of use.
- Clean the appliance's lamp with dry cloth in periodic times.

F TROUBLESHOOTING**THE APPLIANCE DOESN'T OPERATE**

1. Check if the appliance is plugged in.
2. Check the electrical connections and voltage.
3. Check if the fuse is on or off.

THE APPLIANCE IS NOISY

1. Check the motor.

THE APPLIANCE STOPPED

1. The appliance can stop due to low voltage. In this situation check the voltage.
2. If there is leakage current, the appliance doesn't operate. Check it.

THE LAMP DOESN'T OPERATE

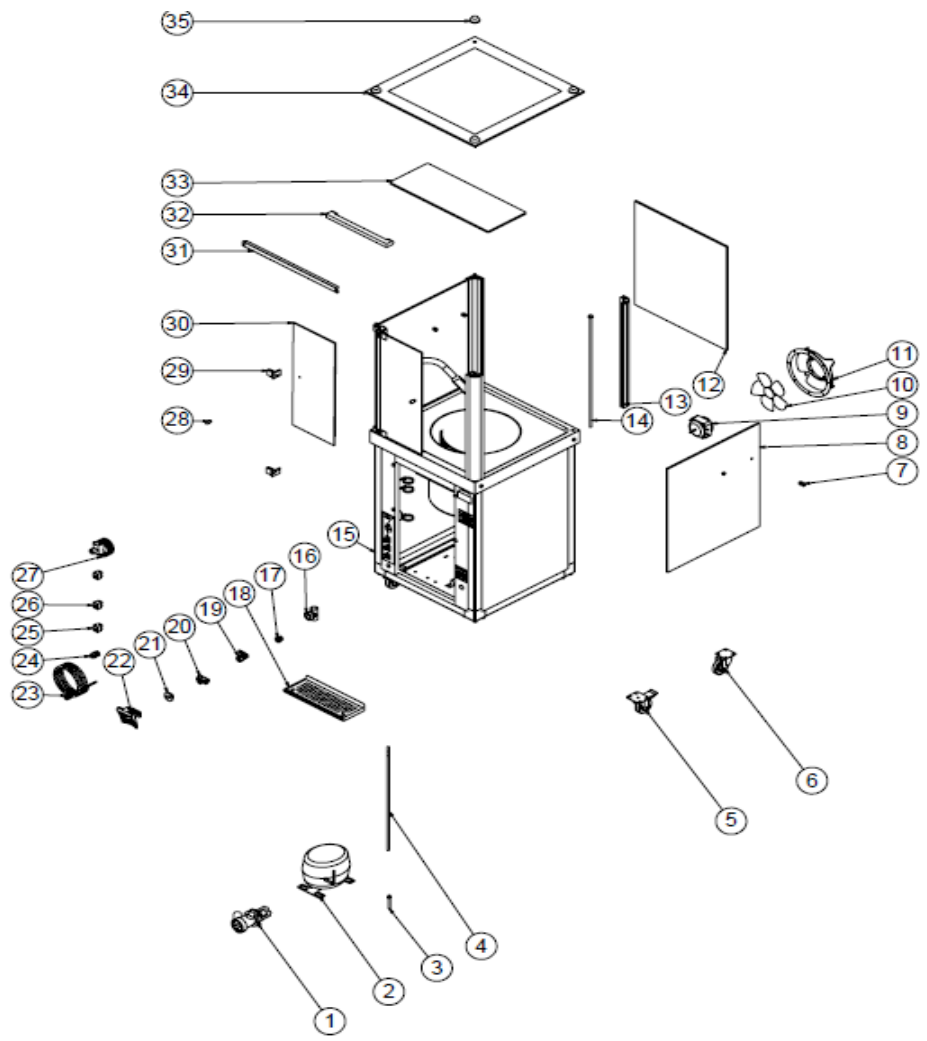
1. Check the lamp. If it is broken, change it.

- If ayran making is not done at suitable quality
- If any function of security doesn't work
 - Do not use the appliance.

***If these problems are still going on, contact with our authorized services.**

AYRAN MAKER

G SPARE PART LIST-EXPLODING DRAWING



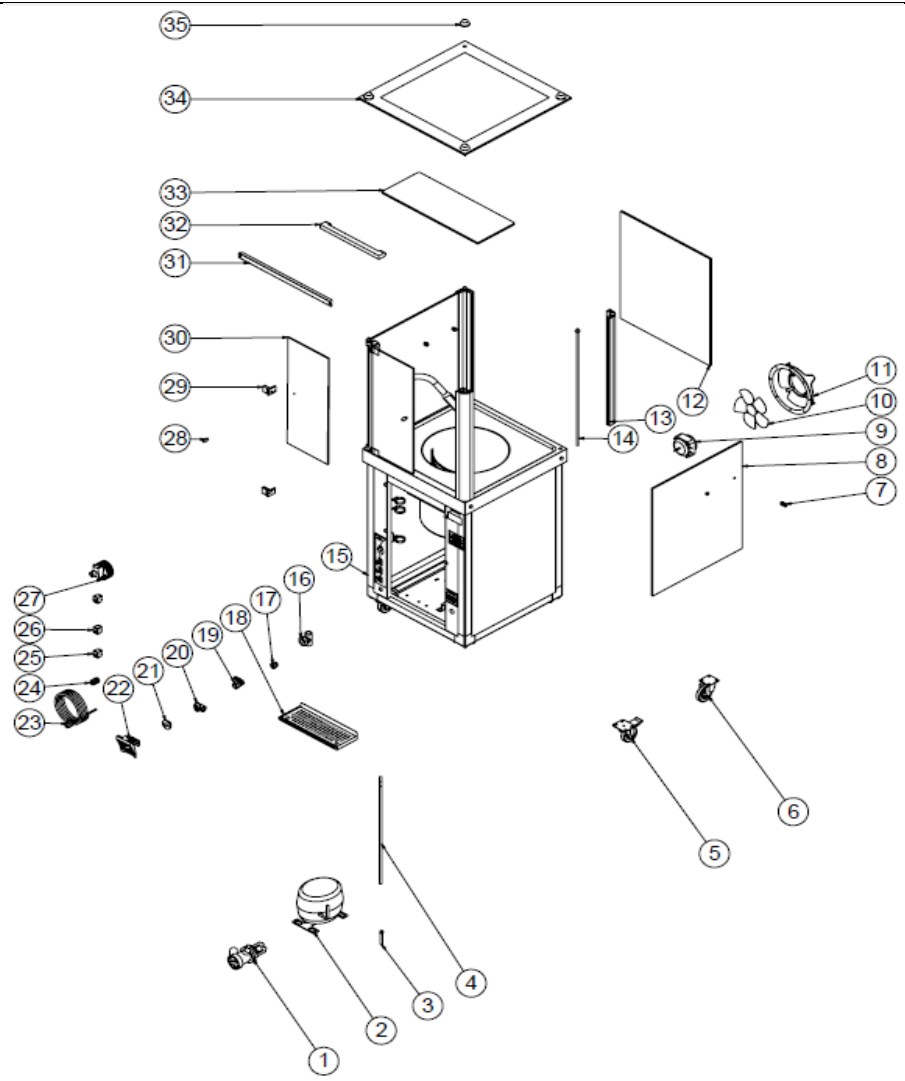
EMP.AYR.40

G SPARE PART LIST-EXPLODING DRAWING

PRODUCT CODE: EMP.AYR.40		
NO	PRODUCT NAME	P.CODE
1	DRAIN PUMP	M.ELK-MTR-PMP-002
2	COMPRESSOR	M.SOG-KMS-002
3	SIBO	M.SOG-MUH-001
4	HOSE	HTS-HRT-005
5	WHEEL WITH BRAKE	M.AKS-TKR-PSF-001
6	WHEEL WITHOUT BRAKE	M.AKS-TKR-PS-001
7	INTERMEDIATE SHELF HOLDER	M.AKS-GNL-003
8	SIDE GLASS	M.CAM-ERS-003
9	FAN MOTOR	M.ELK-MTR-FMT-002
10	WING	M.ELK-HVL-FKN-002
11	FAN CIRCLE WIRE	M.MUH-001
12	FRONT WINDOW	M.CAM-ERS-004
13	ROUND ALUMINUM PROFILE	YPR-ERS.AYR-KS-0001
14	GIJON LOCATION	YTL-ERS.AYR-KS-0002
15	CHASSIS	-
16	PLASTIC T ELBOW	M.PLS-ERS-020
17	EXTENSION	M.MEK-TES-KVN-003
18	FILTER SHEET	YSC-ERS.AYR-PN-0002
19	1/2 VALVE	M.MEK-TES-KVN-001
20	1/2 ELBOW	M.MEK-TES-SRI-006
21	INTERMEDIATE NIPPLE	YTL-ERS.AYR-KS-0003
22	tap	M.MEK-TES-MSL-002
23	CABLE	M.ELK-PWR-PBK-003
24	CABLE GLAND	M.ELK-RKR-PLS-003
25	KEY	M.ELK-SLT-ANL-001
26	KEY	M.ELK-SLT-ANL-003
27	THERMOSTAT	M.ELK-MEK-TRM1-009
28	HANDLE	M.AKS-KLP-CT-001
29	HINGE	M.AKS-MNT-ALM-002
30	582*239 WINDSCREEN	M.CAM-ERS-005
31	LAMP SHEET	YSC-ERS.AYR-PN-0010
32	LED LAMP	M.ELK-LMB-ARM-006
33	565*220 INTERMEDIATE SHELF	M.CAM-ERS-006
34	GLASS TOP	M.CAM-ERS-002
35	TOP GLASS HOLDER	YTL-ERS.AYR-KS-0004

AYRAN MAKER

G SPARE PART LIST-EXPLODING DRAWING



EMP.AYR.40-P

G SPARE PART LIST-EXPLODING DRAWING

PRODUCT CODE: EMP.AYR.40-P		
NO	PRODUCT NAME	P.CODE
1	DRAIN PUMP	M.ELK-MTR-PMP-002
2	COMPRESSOR	M.SOG-KMS-002
3	SIBO	M.SOG-MUH-001
4	HOSE	HTS-HRT-005
5	WHEEL WITH BRAKE	M.AKS-TKR-PSF-001
6	WHEEL WITHOUT BRAKE	M.AKS-TKR-PS-001
7	INTERMEDIATE SHELF HOLDER	M.AKS-GNL-003
8	SIDE GLASS	M.CAM-ERS-003
9	FAN MOTOR	M.ELK-MTR-FMT-002
10	WING	M.ELK-HVL-FKN-002
11	FAN CIRCLE WIRE	M.MUH-001
12	FRONT WINDOW	M.CAM-ERS-004
13	ROUND ALUMINUM PROFILE	YPR-ERS.AYR-KS-0001
14	GIJON LOCATION	YTL-ERS.AYR-KS-0002
15	CHASSIS	-
16	PLASTIC T ELBOW	M.PLS-ERS-020
17	EXTENSION	M.MEK-TES-KVN-003
18	FILTER SHEET	YSC-ERS.AYR-PN-0002
19	1/2 VALVE	M.MEK-TES-KVN-001
20	1/2 ELBOW	M.MEK-TES-SRI-006
21	INTERMEDIATE NIPPLE	YTL-ERS.AYR-KS-0003
22	tap	M.MEK-TES-MSL-002
23	CABLE	M.ELK-PWR-PBK-003
24	CABLE GLAND	M.ELK-RKR-PLS-003
25	KEY	M.ELK-SLT-ANL-001
26	KEY	M.ELK-SLT-ANL-003
27	THERMOSTAT	M.ELK-MEK-TRM1-009
28	HANDLE	M.AKS-KLP-CT-001
29	HINGE	M.AKS-MNT-ALM-002
30	582*239 WINDSCREEN	M.CAM-ERS-005
31	LAMP SHEET	YSC-ERS.AYR-PN-0010
32	LED LAMP	M.ELK-LMB-ARM-006
33	565*220 INTERMEDIATE SHELF	M.CAM-ERS-006
34	GLASS TOP	M.CAM-ERS-002
35	TOP GLASS HOLDER	YTL-ERS.AYR-KS-0004

AYRAN MAKER

H ELECTRIC CIRCUIT SCHEMA

