



TEA MAKER

CONTENTS

A	GENERAL INFORMATION	Page 2
A1	PRODUCT DESCRIPTION	Page 3
A2	TECHNICAL INFORMATION.....	Page 3
A3	TRANSPORTATION	Page 4
A4	UNPACKING	Page 4
B	INSTALLATION	Page 4
C	SAFETY INSTRUCTIONS.....	Page 5
D	OPERATION	Page 6
E	CLEANING & MAINTENANCE.....	Page 7
F	TROUBLESHOOTING	Page 8
G	SPARE PART LIST- EXPLODING DRAWING	Page 9
H	ELECTRIC CIRCUIT SCHEMA	Page 13

A GENERAL INFORMATION

Before installing the appliance, read operation and maintenance instructions carefully. Wrong installation and part changing may damage the product or may cause injury on people. These are not in our company's responsibility to damage the appliance intentionally, negligence, detriments because of disobeying instructions and regulations, wrong connections. Unauthorized intervention to appliance invalidates the warranty.

1. This instruction manual should be kept in a safe place for future reference.
2. **Installation should be made in accordance with ordinances and security rules of that country by a qualified service personnel.**
3. This appliance has to be used by trained person.
4. Please turn off the appliance immediately in the event of malfunction or failure. The appliance should be repaired only by authorized service personnel. Please demand original spare part.

TEA MAKER

A1 PRODUCT DESCRIPTION

*The Professional Tea Maker ,that provides high efficiency has been designed to be used in industrial kitchens.

Product Code	Dimensions (mm)	Weight (kg)	Packaging Dimensions (mm)
EMP.CY.80	Ø 300x425	4	340x340x480
EMP.CY.120	Ø 355x480	5	350x350x520
EMP.CY.250	Ø 390x500	7	420x420x540
EMP.CY.400	Ø 510x620	11	540x540x640

A2 TECHNICAL INFORMATION

Product Code	Capacity (Lt)	Power (Kw)	Operating Voltage (V)	Cable (mm ²)	Fuse (A)
EMP.CY.80	8	1,75	220-230	3x1,5	16
EMP.CY.120	13	1,75	220-230	3x1,5	16
EMP.CY.250	20	2,5	220-230	3x1,5	16
EMP.CY.400	40	5	220-230	3x2,5	32

A3 TRANSPORTATION

*This appliance can be moved by hand from area to area. Do not crash and drop the appliance while transporting.

A4 UNPACKING

*Please unpack the package according to the security codes and ordinances of current country and get rid from the pack. Parts which contacts with food are produced by stainless steel. All plastic parts are marked by material's symbol.

*Please check that all the parts of appliance had come completely and if they are damaged or not during the shipping.

B INSTALLATION

*Please place the product to straight and sturdy ground, please take necessary steps against possibility of overturn.

*Technician who will serve for installation and service for the appliance must be professional on this subject and must have installation and service licenses by the company.

*Connection to Electric Power Supply must be done by authorized person.

*Please be sure that the voltage connected to appliance must be equal with the voltage which is on appliance's label.













This appliance must be connected to an earthed outlet in accordance with safety rules and standards.

*Appliance's earthing must be connected to earthing line on panel which is nearest to electric installation.

*Connection to the main fuse and leak current fuse must be done in accordance with the current regulations.

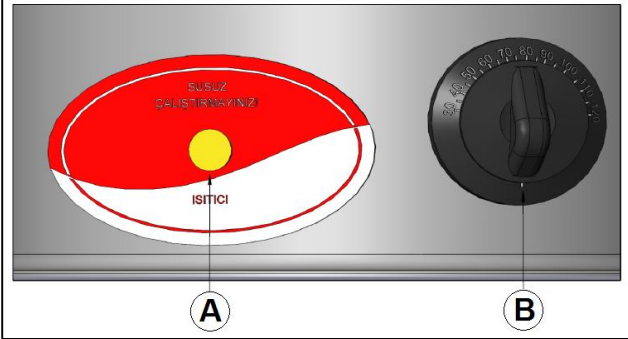
TEA MAKER

C SAFETY INSTRUCTIONS

-  *Do not use the appliance in insufficient lighted place.
-  *Do not touch the moving attachments while the appliance operates.
-  *Do not install the appliance in the presence of flammable or explosive materials.
-  *Do not operate the appliance when the machine is empty.
-  *Do not load so less or more than appliance's capacity.
-  *Do not attempt to use the appliance without suitable protective equipments.
-  *Because of any reason if there is a fire or flame flare where the appliance is used, turn off all gas valves and electric contactor switch quickly and use fire extinguisher. Never use water to extinguish the fire.
-  *All the damages because of not having earthing connection will not be on warranty.
-  *Do not interfere the appliance with conductive or insulator material (etc: spoon) while the appliance is operating.
-  *Always keep it where the children can not reach.

D OPERATION

*Control Panel;



A : Indicator Lamp

B : Thermostat Button

*Operating;

- Before first use fill the water and tea tank completely with water and boil for 30 minutes. Then pour the water and rinse.
- Fill with water as bowl capacity. In order to prevent overflow leave 3-4 cm space from top.
- Adjust enough tea and fill in to the filter.
- Set the thermostat button to 100-110°C and operate the appliance.
- The lamp (yellow led) that shows the heater works will be ON and 25-45 minutes later the water will be boiled. (Boiling time changes according to capacity)
- If necessary you can increase or decrease the temperature of the machine.
- Fill the boiled water from hot water tap to infusion bowl and pour into the filter and then leave it for infusion for 10-12 minutes.
- After the operation completed, unplug the power supply.

TEA MAKER

E CLEANING & MAINTENANCE

➤ **CLEANING AND MAINTENANCE AFTER EVERY USE**

- Clean the surface of appliance with moist cloth after every use.
- Always turn off the appliance and disconnect from the power supply before cleaning.
- Use vinegar or lemon juice to clean residual tea stains.
- Wash the tea tank and filter with water and then dry.
- Do not use abrasive cleaning chemicals as these can leave harmful residues.
- Do not clean the appliance by spraying water directly, otherwise electric motor may get damaged.

➤ **PERIODIC CLEANING AND MAINTENANCE**

- Maintenance should be done by qualified person.
- Clean the resistance in appliance once in a week with lime remover according to instructions.
- Get the periodic maintenance of the appliance once in every 15 days.
 - Unplug the appliance.
 - Take off the filter from appliance. Pour the tea and water from their tanks and turn off the taps.
 - Pay attention the lime remover that is used to have high quality.
 - When the resistance is hot, do not put lime remover into the appliance.
 - Do not operate the appliance when there is lime remover in it.
 - Pour lime remover on to the calcification surfaces. After foaming (nearly 5 min.) pour the lime remover in to the another case.
 - If there is calcification in the bowl, pour a tea cup of lime remover into the bowl and rinse till it is fixed.
 - Do not use the lime remover with another cleaning material (etc: bleach, hydrochloric acid) during cleaning.
 - Do not keep the lime remover in the appliance more than 10 minutes.
 - Do not evacuate the lime remover that is in the appliance through the taps.
 - Rinse the inside of appliance with water.
 - Fill the appliance with water and boil and then evacuate the water. Do not brew the tea with boiled water.

F TROUBLESHOOTING

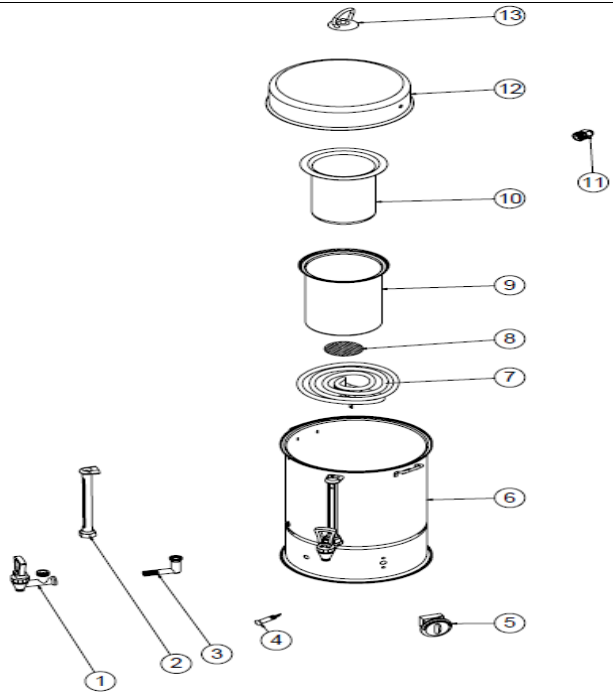
THE APPLIANCE DOESN'T OPERATE	<ol style="list-style-type: none">1. Check if the appliance is plugged in.2. Check the electrical connections and voltage.
THE APPLIANCE IS NOISY	<ol style="list-style-type: none">1. If the water level in the bowl is lower than tap level,add water.2. If the appliance's thermostat button is broken,the water in the bowl will always boil,check it.
THE APPLIANCE STOPPED	<ol style="list-style-type: none">1. The appliance can stop due to low voltage.In this situation check the voltage.
THE APPLIANCE DOESN'T HEAT THE WATER	<ol style="list-style-type: none">1. If there is calcification at the appliance's resistance,the water in the bowl is not heated.

- If tea making is not done at suitable quality
- If any function of security doesn't work
 - Do not use the appliance.

***If these problems are still going on,contact with our authorized services.**

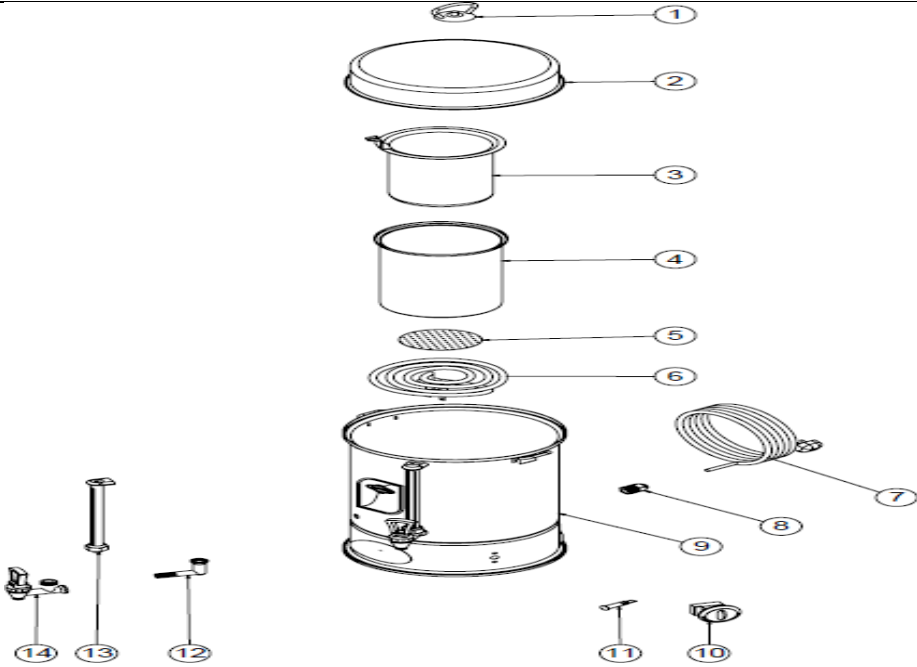
TEA MAKER

G SPARE PART LIST-EXPLODING DRAWING



PRODUCT CODE: EMP.CY.80		
NO	PRODUCT NAME	P.CODE
1	TAP	M.MEK-TES-MSL-001
2	INDICATOR PIPE 19 CM	M.PLS-ERS-005
3	LONG ELBOW 12/1	M.MEK-TES-SRI-004
4	PLUG SOCKET WARNING LAMP- YELLOW	M.ELK-LMB-SNY-003
5	CAYYAP THERMOSTAT 30-120 C	M.ELK-MEK-TRM1-007
6	CHASSIS	-
7	RESISTANT 220V 1750W L165 YUV FLASH	M.ELK-RZS-BRU-CAY-001
8	FILTER SHEET DIAMETER:95	YSC-ERS.CAY-LZ-0010
9	DEM CONTAINER (12X17)	M.MTS-ERS-CAY-004
10	FILTER (10X15)	M.MTS-ERS-CAY-005
11	PG-9 CABLE GLAND	M.ELK-RKR-PLS-002
12	COVER(22X6)	YMH-ERS-CY-FLZ-0001
13	TEA BOILER COVER (WIRE TEPE)	M.MTS-ERS-CAY-021

G SPARE PART LIST-EXPLODING DRAWING

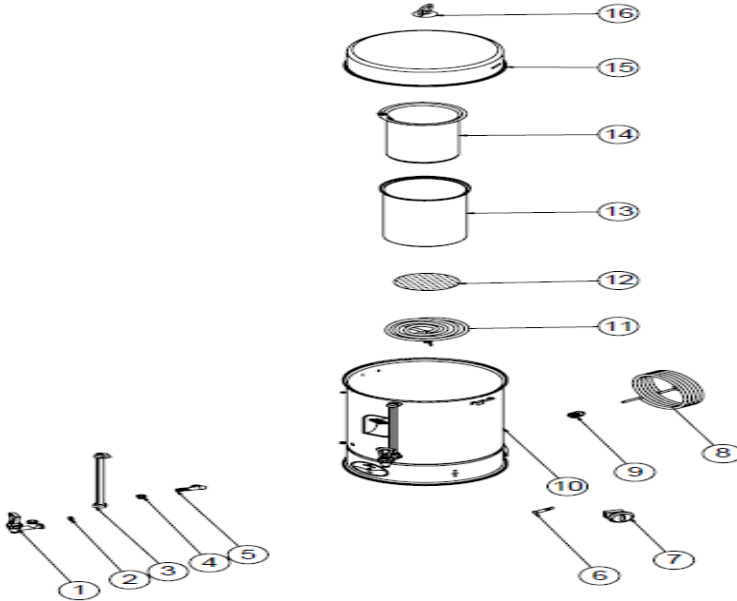


PRODUCT CODE: EMP.CY.120

NO	PRODUCT NAME	P.CODE
1	COVER (WIRE PEAK)	M.MTS-ERS-CAY-021
2	COVER (24X8)	YMH-ERS.CY-FLZ-0004
3	FILTER (12X17)	M.MTS-ERS-CAY-010
4	DEM CONTAINER (14X21)	M.MTS-ERS-CAY-009
5	FILTER SHEET DIAMETER:95	YSC-ERS.CAY-LZ-0010
6	RESISTANT 220V 1750W L165 YUV FLASH	M.ELK-RZS-BRU-CAY-001
7	3*1.5 TTR PLUG GRAY CABLE 2MT	M.ELK-PWR-PBK-004
8	PG-9 CABLE GLAND	M.ELK-RKR-PLS-002
9	CHASSIS	-
10	THERMOSTAT 30-120 C	M.ELK-MEK-TRM1-007
11	PLUG SOCKET WARNING LAMP- YELLOW	M.ELK-LMB-SNY-003
12	LONG ELBOW 12/1	M.MEK-TES-SRI-004
13	INDICATOR PIPE 22 CM	M.PLS-ERS-006
14	TAP	M.MEK-TES-MSL-001

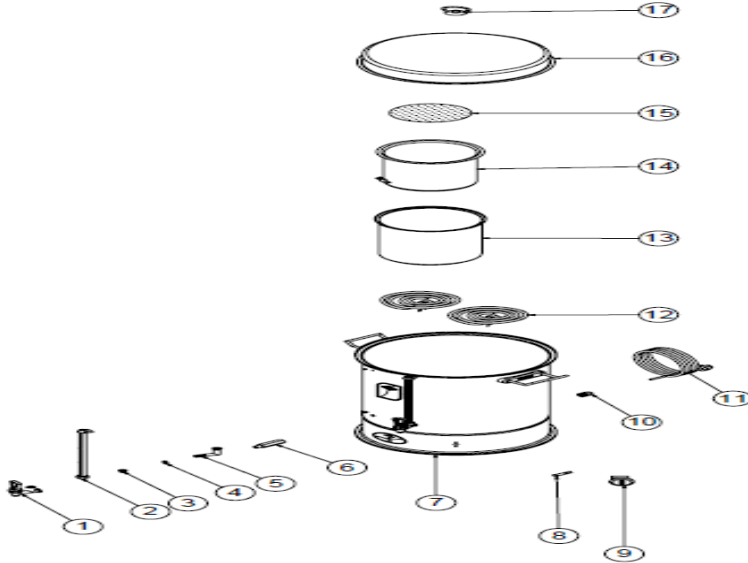
TEA MAKER

G SPARE PART LIST-EXPLODING DRAWING



PRODUCT CODE : EMP.CY.250		
NO	PRODUCT NAME	P.CODE
1	TAP	M.MEK-TES-MSL-001
2	NUT 16 OF 12/1	M.MEK-TES-SRI-005
3	INDICATOR PIPE 27 CM	M.PLS-ERS-007
4	YELLOW NIPPLE 12/1	M.MEK-TES-SRI-003
5	LONG ELBOW 12/1	M.MEK-TES-SRI-004
6	WARNING LIGHT WITH SOCKET- YELLOW	M.ELK-LMB-SNY-003
7	THERMOSTAT 30-120 C	M.ELK-MEK-TRM1-007
8	3*1.5 TTR PLUG GRAY CABLE 2MT	M.ELK-PWR-PBK-004
9	PG-9 CABLE GLAND	M.ELK-RKR-PLS-002
10	CHASSIS	-
11	RESISTANT 220V 2500W L165 YUV FLASH	M.ELK-RZS-BRU-CAY-002
12	FILTER SHEET DIAMETER:95	YSC-ERS.CAY-LZ-0010
13	DEM CONTAINER (16X24)	M.MTS-ERS-CAY-014
14	FILTER (14X22)	M.MTS-ERS-CAY-015
15	COVER (30X8)	YMH-ERS.CY-FLZ-0002
16	COVER (WIRE PEAK)	M.MTS-ERS-CAY-021

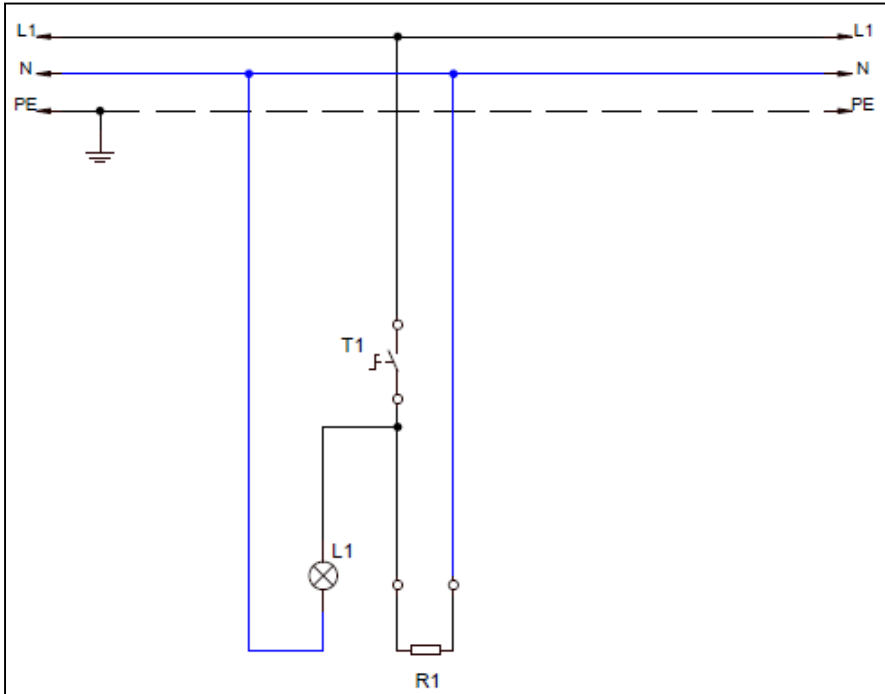
G SPARE PART LIST-EXPLODING DRAWING



PRODUCT CODE : EMP.CY.400		
NO	PRODUCT NAME	P.CODE
1	TAP	M.MEK-TES-MSL-001
2	INDICATOR PIPE 32 CM	M.PLS-ERS-008
3	YELLOW NIPPLE 12/1	M.MEK-TES-SRI-003
4	NUT 16 OF 12/1	M.MEK-TES-SRI-005
5	LONG ELBOW 12/1	M.MEK-TES-SRI-004
6	LONG YELLOW NIPPLE	YTL-ERS.CY-KS-0002
7	CHASSIS	-
8	WARNING LIGHT WITH SOCKET- YELLOW	M.ELK-LMB-SNY-003
9	THERMOSTAT 30-120 C	M.ELK-MEK-TRM1-007
10	PG-9 CABLE GLAND	M.ELK-RKR-PLS-002
11	3*1.5 TTR PLUG GRAY CABLE 2MT	M.ELK-PWR-PBK-004
12	RESISTANT 220V 2500W L165 YUV FLASH	M.ELK-RZS-BRU-CAY-002
13	DEM CONTAINER (22X24)	M.MTS-ERS-CAY-019
14	FILTER (20X20)	M.MTS-ERS-CAY-020
15	FILTER SHEET DIAMETER:175	YSC-ERS.CAY-LZ-0013
16	COVER (40X8)	YMH-ERS.CY-FLZ-0010
17	COVER (WIRE PEAK)	M.MTS-ERS-CAY-021

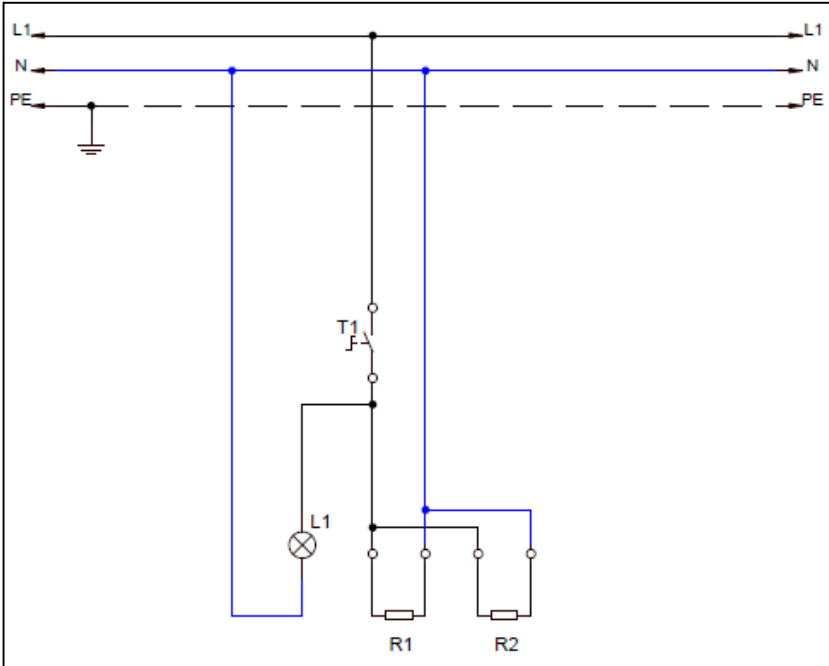
TEA MAKER

H ELECTRIC CIRCUIT SCHEMA



PRODUCT CODE	KW
EMP.CY.80	1,75
EMP.CY.120	1,75
EMP.CY.250	2,5

I	T	R1	L1
Terminal	Thermostat (30-120°C)	Resistance 1750 W (220V)	Thermostat Signal Lamp

H ELECTRIC CIRCUIT SCHEMA


PRODUCT CODE	KW
EMP.CY.400	5

I	T	R1	R2	L1
Terminal	Thermostat (30-120°C)	Resistance 2500 W (220V)	Resistance 2500 W (220V)	Thermostat Signal Lamp