



# SHAWARMA MACHINES (GASEOUS)

## CONTENTS

---

<b>A</b>	<b>GENERAL INFORMATION .....</b>	<b>Page 2</b>
A1	PRODUCT DESCRIPTION .....	Page 3
A2	TECHNICAL INFORMATION .....	Page 3
A3	TRANSPORTATION .....	Page 4
A4	UNPACKING .....	Page 4
<b>B</b>	<b>INSTALLATION .....</b>	<b>Page 4</b>
<b>C</b>	<b>SAFETY INSTRUCTIONS .....</b>	<b>Page 5</b>
<b>D</b>	<b>OPERATION .....</b>	<b>Page 6</b>
<b>E</b>	<b>CLEANING &amp; MAINTENANCE.....</b>	<b>Page 7</b>
<b>F</b>	<b>TROUBLESHOOTING .....</b>	<b>Page 8</b>
<b>G</b>	<b>INJECTOR CHANGE AND GAS SETTING .....</b>	<b>Page 9</b>
<b>H</b>	<b>GAS CONNECTION IMAGES .....</b>	<b>Page 10</b>
<b>I</b>	<b>SPARE PART LIST- EXPLODING DRAWING .....</b>	<b>Page 11</b>
<b>J</b>	<b>ELECTRIC CIRCUIT SCHEMA .....</b>	<b>Page 29</b>

## A GENERAL INFORMATION

---

Before installing the appliance, read operation and maintenance instructions carefully. Wrong installation and part changing may damage the product or may cause injury on people. These are not in our company's responsibility to damage the appliance intentionally, negligence, detriments because of disobeying instructions and regulations, wrong connections. Unauthorized intervention to appliance invalidates the warranty.

1. This instruction manual should be kept in a safe place for future reference.
2. **Installation should be made in accordance with ordinances and security rules of that country by a qualified service personnel.**
3. This appliance has to be used by trained person.
4. Please turn off the appliance immediately in the event of malfunction or failure. The appliance should be repaired only by authorized service personnel. Please demand original spare part.

# SHAWARMA MACHINES (GASEOUS)

## A1 PRODUCT DESCRIPTION

\*The Professional Shawarma Machines, that provides high efficiency has been designed to be used in industrial kitchens.

Product Code	Dimensions (mm)	Weight (kg)	Packaging Dimensions (mm)
EMP.DN.220	630x8300x983	30	740x650x990
EMP.DN.221	636x830x1163	34	740x650x1220
EMP.DN.222	630x830x1343	39	620x720x1340
EMP.DN.150	568x707x964	36	740x650x980
EMP.DN.151	568x707x1158	41	740x650x1220
EMP.DN.152	568x707x1337	44	740x650x1340
EMP.DN.210	568x706x964	36	740x650x980
EMP.DN.211	568x706x1158	43	740x650x1220
EMP.DN.212	568x706x1337	47	620x720x1340
EMP.DN.150-3R	581x726x1017	57	631x776x1067
EMP.DN.151-3R	581x726x1017	62	631x776x1067

## A2 TECHNICAL INFORMATION

Product Code	Model	Heater	Power (KW)	Oper. Voltage
				(V)
EMP.DN.221	Upper Motor	4x	14	220
EMP.DN.222	Upper Motor	5x	17,5	220
EMP.DN.150	Upper Motor	3x	10,5	220
EMP.DN.151	Lower Motor	4x	14	220
EMP.DN.152	Lower Motor	5x	17,5	220
EMP.DN.210	Lower Motor	3x	10,5	220
EMP.DN.211	Lower Motor with Glass	4x	14	220
EMP.DN.212	Lower Motor with Glass	5x	17,5	220
EMP.DN.150-3R	Lower Motor	6x	19,5	220
EMP.DN.151-3R	Lower Motor	6x	24	220

**A3 TRANSPORTATION**

---

\*This appliance can not be moved by hand from area to area. It must be moved on pallet with forklift truck.

**A4 UNPACKING**

---

\*Please unpack the package according to the security codes and ordinances of current country and get rid from the pack. Parts which contacts with food are produced by stainless steel. All plastic parts are marked by material's symbol.

\*Please check that all the parts of appliance had come completely and if they are damaged or not during the shipping.

**B INSTALLATION**

---

\*Please place the product to straight and sturdy ground, please take necessary steps against possibility of overturn.

\*Technician who will serve for installation and service for the appliance must be professional on this subject and must have installation and service licenses by the company.

\*Connection to Electric Power Supply must be done by authorized person.

\*Please be sure that the voltage connected to appliance must be equal with the voltage which is on appliance's label.



This appliance must be connected to an earthed outlet in accordance with safety rules and standards.

\*Appliance's earthing must be connected to earthing line on panel which is nearest to electric installation.

\*Connection to the main fuse and leak current fuse must be done in accordance with the current regulations.

\*The appliance must be connected correctly according to local and national gas standards of your country.

\*The appliance gas entrances are indicated with "G" label on the body.

\*Connection to gas fitment must be done with suitable diameter metal flex pipe and spheric valve. The spheric valve must be immobilized to a place that is far away from heat and accessible during the danger. After gas entrance connection done, gas leakages must be checked











\*According to the datas on appliance information plate, gas and pressure must be adjusted. If the gas type that is adjusted is not the suitable with gas type that is at installation place, apply the instructions that is about adjustment of different gas type (**Event :G**)

\*If the location where shawarma machines placed is covered with nonflammable heat insulation material, the distance between them must be 5 cm. Otherwise it should be at least 20 cm. The appliance shouldn't be operated under chimney hood.

## SHAWARMA MACHINES (GASEOUS)

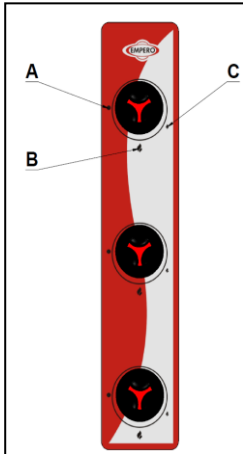
### C SAFETY INSTRUCTIONS

---

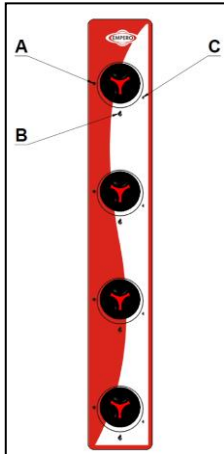
-  \*Do not use the appliance in insufficient lighted place .
-  \*Do not touch the moving attachments while the appliance operates.
-  \*Do not install the appliance in the presence of flammable or explosive materials.
-  \*Do not operate the appliance when the machine is empty.
-  \*Do not load so less or more than appliance's capacity.
-  \*Do not attempt to use the appliance without suitable protective equipments.
-  \*Because of any reason if there is a fire or flame flare where the appliance is used,turn off all gas valves and electric contactor switch quickly and use fire extinguisher .Never use water to extinguish the fire.
-  \*All the damages because of not having earthing connection will not be on warranty.
-  \*If there is gas leakage where the shawarma machine is,first fix the gas leakage and ventilate the area.Do not fire absolutely and do not use electric.
-  \*Definitely do not allow to check the sealing with flame.

## D OPERATION

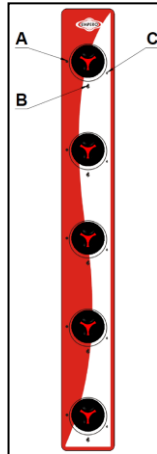
### \*Control Panel;



3 RADIAN

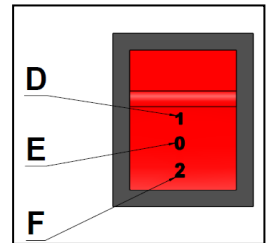


4 RADIAN



5 RADIAN

- A : Gas is Off
- B : Full Flame
- C : Half Flame
- D : (1) Clockwise
- E : (0) Switch Off
- F : (2) Anticlockwise



### \*Operating;

- According to type of use,make gas entrance connection from behind the machine.Because the machine is operated with LPG and NG.
- Plug in the appliance.
- Take off the skewers and place the meats to the skewers.
- In order to fire the radian,turn on the gas valves.
- Switch to full flame or half flame position for desired temperature.
- Switch to (1) position to operate the motor.While the switch is (1) position,the skewer turns at clockwise.At (2)position it turns at anti-clocwise.
- You can adjust the suitable distance between skewer-radian during forward –back motion at lower motor shawarma machines.
- Cooked meats can be accumulated at spillage tray with the help of shawarma blades.
- After cooking process turn off the gas valves with a turn.
- In order to turn off the motor that operates the skewer,switch to (0) position and unplug the appliance.

## SHAWARMA MACHINES (GASEOUS)

### E CLEANING & MAINTENANCE

---

#### ➤ CLEANING AND MAINTENANCE AFTER EVERY USE

- After every meat cooking process, clean the body, spillage tray, skewer and radian.
- Always turn off the appliance and disconnect from the power supply before cleaning. Turn off the gas connection.
- Do not use abrasive cleaning chemicals as these can leave harmful residues.
- Do not clean the appliance by spraying water directly, otherwise electric motor may get damaged.
- Make the residue of meat and burnt oil wait that accumulated at spillage tray wait at hot water and scrape with spatula.
- At shawarma machines with glass, clean the thermal glass after every use.

#### ➤ PERIODIC CLEANING AND MAINTENANCE

- Maintenance should be done by qualified person.
- Get the periodic maintenance of the appliance once in every 15 days.
- The Shawarma Machines require low maintenance (Motor and ball bearings are lubricated).
- Check the gas connection hoses in periodic time. If there is slit, hole..etc, change the hoses.
- At lower motor shawarma machines, maintain the moving slides.
- Ventilate the area where the device is in periodic times.
- Maintenance of the appliance's contactor should be done by compressed air according to frequency of use.



## SHAWARMA MACHINES (GASEOUS)

### F TROUBLESHOOTING

<b>THE APPLIANCE DOESN'T OPERATE</b>	<ol style="list-style-type: none"><li>1. Check if the appliance is plugged in.</li><li>2. Check the electrical connections and voltage.</li><li>3. Check the appliance's gas connection has been done or not.</li><li>4. Check if gas comes from radian or not.</li></ol>
--------------------------------------	---

<b>MEATS ARE NOT COOKED WELL</b>	<ol style="list-style-type: none"><li>1. Check the distance between skewer-radian.</li><li>2. Do not put meat on the skewer more than it's capacity.</li></ol>
----------------------------------	--

<b>THE APPLIANCE STOPPED</b>	<ol style="list-style-type: none"><li>1. The appliance can stop due to low voltage. In this situation check the voltage.</li><li>2. If the flame that comes from machine's radian is extinguished unwilling, gas outlet will be stopped automatically due to safety valve.</li></ol>
------------------------------	--

<ul style="list-style-type: none"><li>• If cooking with shawarma machine is not done at suitable quality</li><li>• If any function of security doesn't work<ul style="list-style-type: none"><li>➤ Do not use the appliance.</li></ul></li></ul>
--

**\*If these problems are still going on, contact with our authorized services.**



# SHAWARMA MACHINES (GASEOUS)

## G INJECTOR CHANGE AND GAS SETTING

### SHAWARMA (GAS) BURNER-INJECTOR CHANGE CHART

NG / LPG		EMP.DN.220		EMP.DN.221		EMP.DN.222		
		EMP.DN.210		EMP.DN.211		EMP.DN.212		
		EMP.DN.150		EMP.DN.151		EMP.DN.152		
		∅ mm	X	∅ mm	X	∅ mm	X	
2	G20	1,4	3x	1,4	4x	1,4	5x	
	G25	1,4	3x	1,4	4x	1,4	5x	
3	G30	30 mbar	0,9	3x	0,9	4x	0,9	5x
		50 mbar	0,9	3x	0,9	4x	0,9	5x
	G31	37 mbar	0,9	3x	0,9	4x	0,9	5x
		30 mbar	0,9	3x	0,9	4x	0,9	5x

#### Change of Burner Injector;

1. Rip off the injector at the entrance of burner with suitable equipment
2. Pull the copper pipe to the down by loosening "A" fitting.
3. Loosen the injector that is connected to union and change by paying attention to datas at chart (Image 1)

#### Setting of Half Flame;

1. Remove the tap button and set by turning tap half flame screw with suitable screwdriver. (Image 2) Turn it to left for transformation from LPG to N.G, turn it right for transformation from N.G to LPG.
2. After this process, operate the appliance and set it not to be deflated during transition from full flame to half flame

## H GAS CONNECTION IMAGES

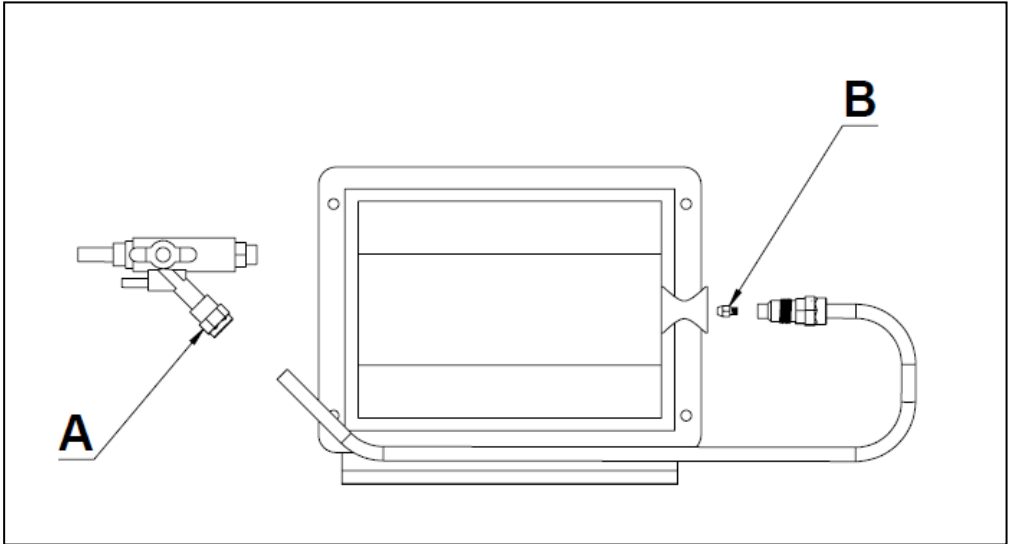


Image 1

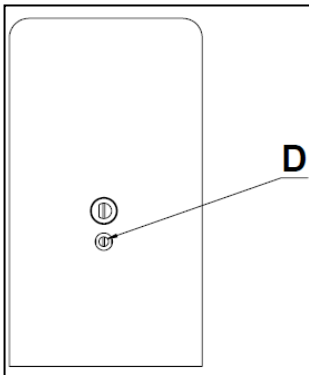
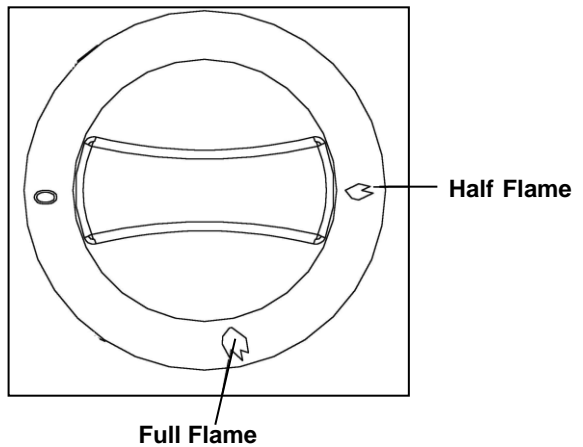
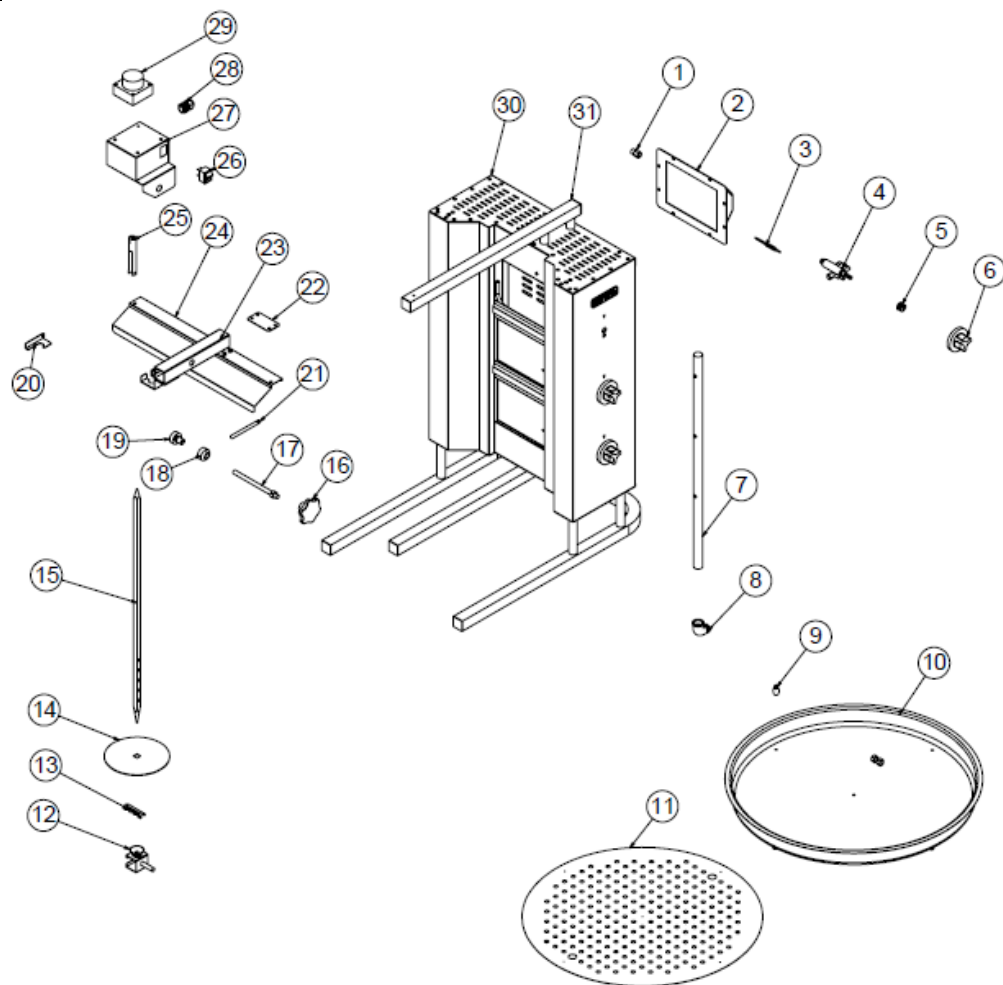


Image 2



# SHAWARMA MACHINES (GASEOUS)

## I SPARE PART LIST-EXPLODING DRAWING



EMP.DN.220

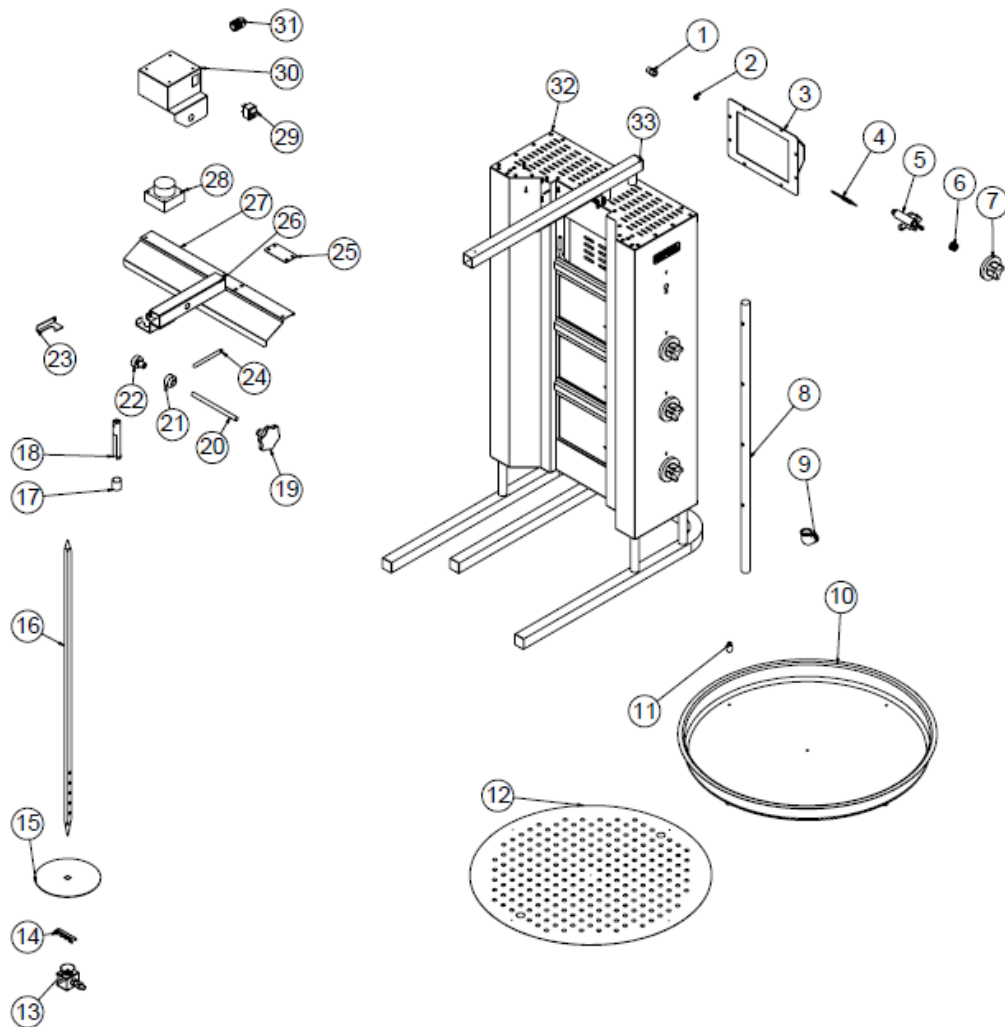
# SHAWARMA MACHINES (GASEOUS)

## I SPARE PART LIST-EXPLODING DRAWING

PRODUCT CODE: EMP.DN.220		
NO	PRODUCT NAME	P.CODE
1	PIPE FITTING	YTL-KNX.DNR-KS-0036
2	RADIANT	M.GAZ-BRL-RDY-001
3	THERMOELEMENT 150 MM M8*1	M.GAZ-TRL-001
4	GAS VALVE 19.28 1/4 G M8*1	M.GAZ-VNA-ECA-001
5	BUTTON SOCKET 8 MM	M.AKS-DGM-SKT-001
6	BUTTON	M.AKS-DGM-LVA-002
7	GAS TANK	M.GAZ-DPO-DN-001
8	BRACKET	M.GAZ-TES-GLV-002
9	HANDLE	M.AKS-KLP-INX-001
10	PAN	YSC-KNX.DNR-LZ-0059
11	FILTER	YSC-KNX.DNR-LZ-0076
12	SHOE SPACE 20 MM (Ø36)	YTL-KNX.DNR-KS-0015
13	SPRING COPPER	B-KPL-SYH-5*97
14	MEAT MIRROR	YSC-KNX.DNR-LZ-0046
15	ROTARY BOTTLE 700 MM	YTL-KNX.DNR-KS-0007
16	M10*63 HANDLE	M.AKS-KLP-BKL-011
17	FIXING SCREW	YTL-KNX.DNR-KS-0004
18	ENGINE SHEET METAL FITTING PART	YTL-KNX.DNR-KS-0035
19	ENGINE SHEET METAL FITTING PART	YTL-KNX.DNR-KS-0034
20	HANGER SHEET METAL	YSC-KNX.DNR-LZ-0047
21	ENGINE FIXING APPARATUS	YTL-KNX.DNR-KS-0005
22	CONEXION SHEET	YSC-KNX.DNR-LZ-0055
23	SLIDING SHEET METAL	YSC-KNX.DNR-LZ-0053
24	HOOD SHEET	YSC-KNX.DNR-PN-0106
25	SHEET METALS CONNECTOR	YTL-KNX.DNR-KS-0001
26	KEY 0-1-2	M.ELK-SLT-AN-001
27	CONEXION SHEET	YSC-KNX.DNR-PN-0040
28	PG-11 CABLE GLAND AND NUT	M.ELK-RKR-PRC-001
29	220V 60HZ ENGINE	M.ELK-MTR-RMM-001
30	CHASSIS	-
31	PROFILE 30*30 590 MM	YPR-KNX.DNR-KS-0023

# SHAWARMA MACHINES (GASEOUS)

## I SPARE PART LIST-EXPLODING DRAWING



EMP.DN.221

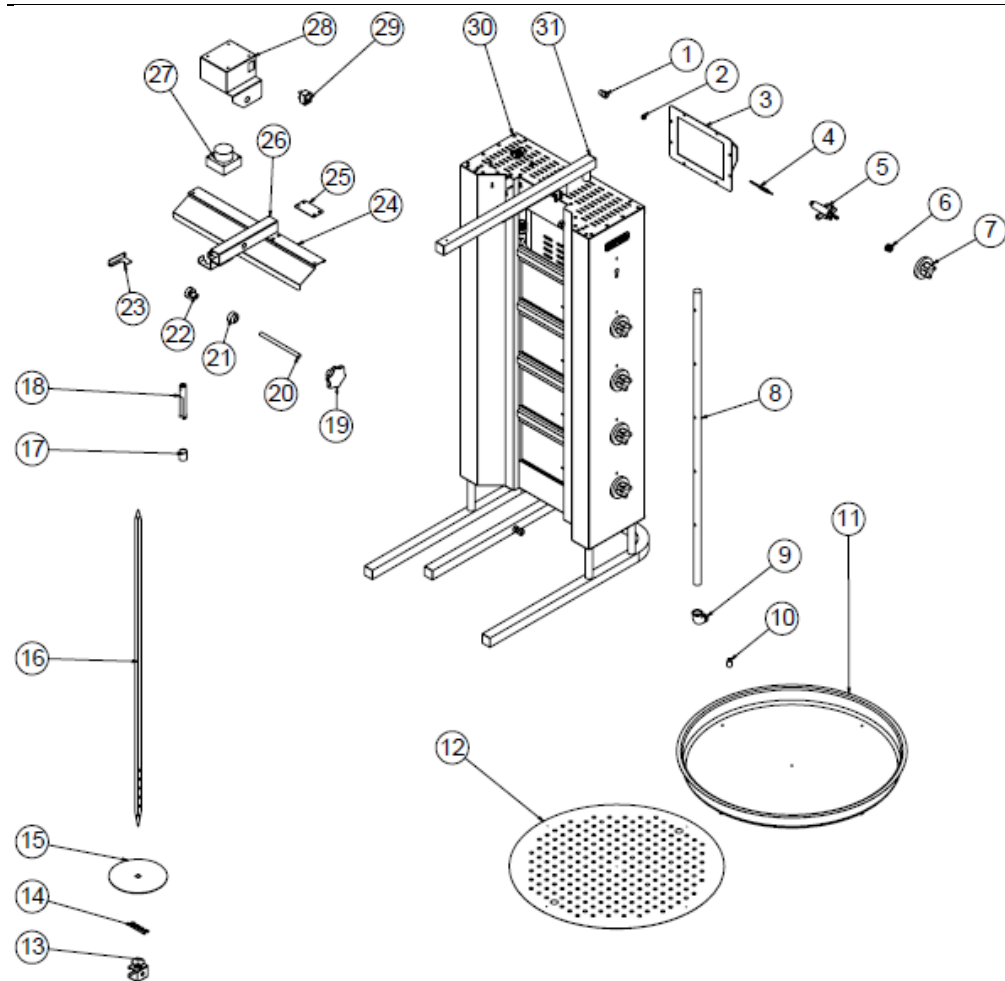
# SHAWARMA MACHINES (GASEOUS)

## I SPARE PART LIST-EXPLODING DRAWING

PRODUCT CODE: EMP.DN.221		
NO	PRODUCT NAME	P.CODE
1	PIPE FITTING	YTL-KNX.DNR-KS-0036
2	M4.5*0.5 INJECTOR 0.70 MM	M.GAZ-ENJ-NG-007
3	RADIANT	M.GAZ-BRL-RDY-001
4	THERMOELEMENT 150 MM M8*1	M.GAZ-TRL-001
5	GAS VALVE 19.28 1/4 G M8*1	M.GAZ-VNA-ECA-001
6	BUTTON SOCKET 8 MM	M.AKS-DGM-SKT-001
7	BUTTON	M.AKS-DGM-LVA-002
8	GAS TANK	M.GAZ-DPO-DN-002
9	BRACKET	M.GAZ-TES-GLV-002
10	PAN	YSC-KNX.DNR-LZ-0059
11	HANDLE	M.AKS-KLP-INX-001
12	FILTER	YSC-KNX.DNR-LZ-0076
13	SHOE SPACE 20 MM (Ø36)	YTL-KNX.DNR-KS-0015
14	SPRING COPPER	B-KPL-SYH-5*97
15	MEAT MIRROR	YSC-KNX.DNR-LZ-0046
16	ROTARY BOTTLE 880 MM	YTL-KNX.DNR-KS-0008
17	PIPE	YBR-KNX.DNR-KS-0004
18	SHEET METALS CONNECTOR	YTL-KNX.DNR-KS-0001
19	M10*63 HANDLE	M.AKS-KLP-BKL-011
20	FIXING SCREW	YTL-KNX.DNR-KS-0004
21	ENGINE SHEET METAL FITTING PART	YTL-KNX.DNR-KS-0035
22	ENGINE SHEET METAL FITTING PART	YTL-KNX.DNR-KS-0034
23	HANGER SHEET METAL	YSC-KNX.DNR-LZ-0047
24	ENGINE FIXING APPARATUS	YTL-KNX.DNR-KS-0005
25	CONEXION SHEET	YSC-KNX.DNR-LZ-0055
26	SLIDING SHEET METAL	YSC-KNX.DNR-LZ-0053
27	HOOD SHEET	YSC-KNX.DNR-PN-0106
28	220V 60HZ ENGINE	M.ELK-MTR-RMM-001
29	KEY 0-1-2	M.ELK-SLT-AN-001
30	CONEXION SHEET	YSC-KNX.DNR-PN-0040
31	PG-11 CABLE GLAND AND NUT	M.ELK-RKR-PRC-001
32	CHASSIS	-
33	PROFILE 30*30 590 MM	YPR-KNX.DNR-KS-0023

# SHAWARMA MACHINES (GASEOUS)

## I SPARE PART LIST-EXPLODING DRAWING



EMP.DN.222

# SHAWARMA MACHINES (GASEOUS)

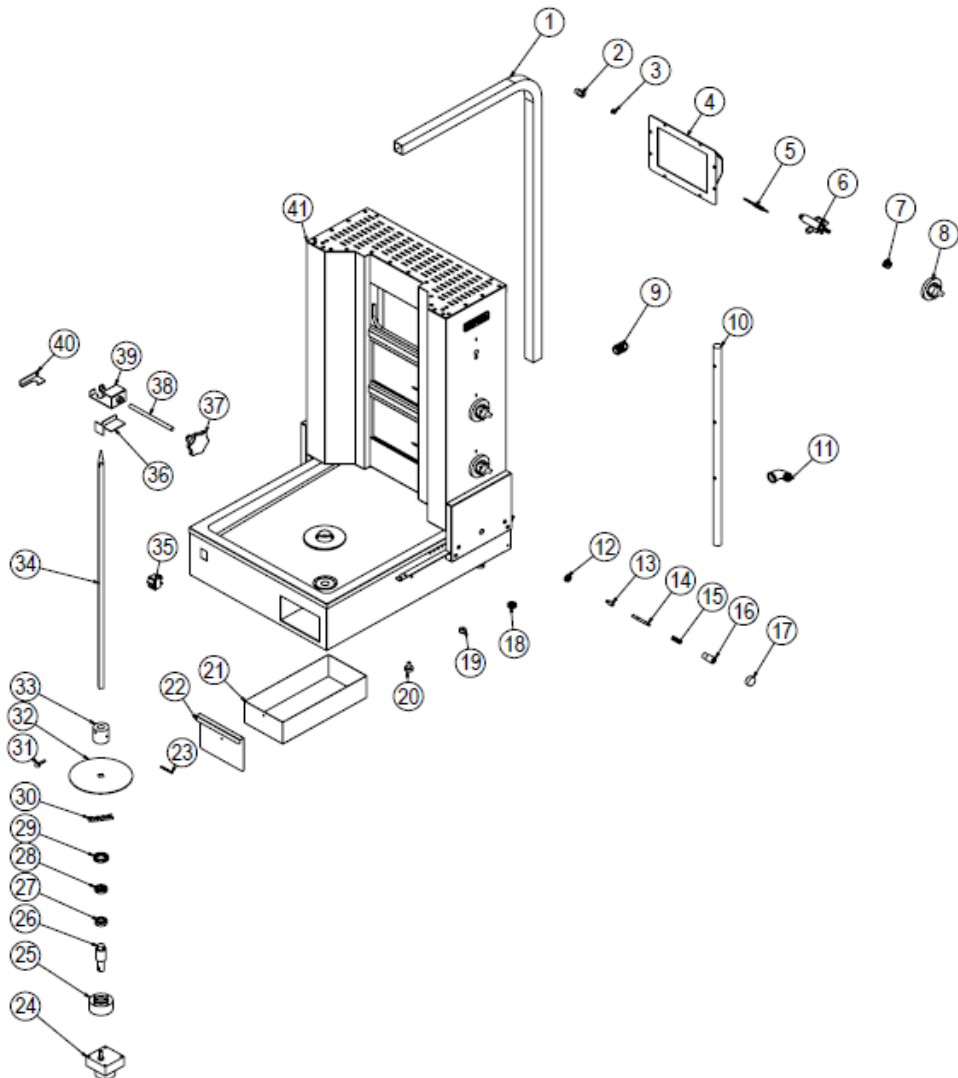
## I SPARE PART LIST-EXPLODING DRAWING

PRODUCT CODE: EMP.DN.222		
NO	PRODUCT NAME	P.CODE
1	PIPE FITTING	YTL-KNX.DNR-KS-0036
2	M4.5*0.5 INJECTOR 0.70 MM	M.GAZ-ENJ-NG-007
3	RADIANT	M.GAZ-BRL-RDY-001
4	THERMOELEMENT 150 MM M8*1	M.GAZ-TRL-001
5	GAS VALVE 19.28 1/4 G M8*1	M.GAZ-VNA-ECA-001
6	BUTTON SOCKET 8 MM	M.AKS-DGM-SKT-001
7	BUTTON	M.AKS-DGM-LVA-002
8	GAS TANK	M.GAZ-DPO-DN-003
9	BRACKET	M.GAZ-TES-GLV-002
10	HANDLE	M.AKS-KLP-INX-001
11	PAN	YSC-KNX.DNR-LZ-0059
12	FILTER	YSC-KNX.DNR-LZ-0076
13	SHOE SPACE 20 MM (Ø36)	YTL-KNX.DNR-KS-0015
14	SPRING COPPER	B-KPL-SYH-5*97
15	MEAT MIRROR	YSC-KNX.DNR-LZ-0046
16	ROTARY SKEWERS 1060 MM	YTL-KNX.DNR-KS-0009
17	PIPE	YBR-KNX.DNR-KS-0004
18	SHEET METALS CONNECTOR	YTL-KNX.DNR-KS-0001
19	M10*63 HANDLE	M.AKS-KLP-BKL-011
20	FIXING SCREW	YTL-KNX.DNR-KS-0004
21	ENGINE SHEET METAL FITTING PART	YTL-KNX.DNR-KS-0035
22	ENGINE SHEET METAL FITTING PART	YTL-KNX.DNR-KS-0034
23	HANGER SHEET METAL	YSC-KNX.DNR-LZ-0047
24	HOOD SHEET	YSC-KNX.DNR-PN-0106
25	CONEXION SHEET	YSC-KNX.DNR-LZ-0055
26	SLIDING SHEET METAL	YSC-KNX.DNR-LZ-0053
27	220V 60HZ ENGINE	M.ELK-MTR-RMM-001
28	CONEXION SHEET	YSC-KNX.DNR-PN-0040
29	KEY 0-1-2	M.ELK-SLT-AN-001
30	CHASSIS	-
31	PROFILE 30*30 590 MM	YPR-KNX.DNR-KS-0023



# SHAWARMA MACHINES (GASEOUS)

## I SPARE PART LIST-EXPLODING DRAWING



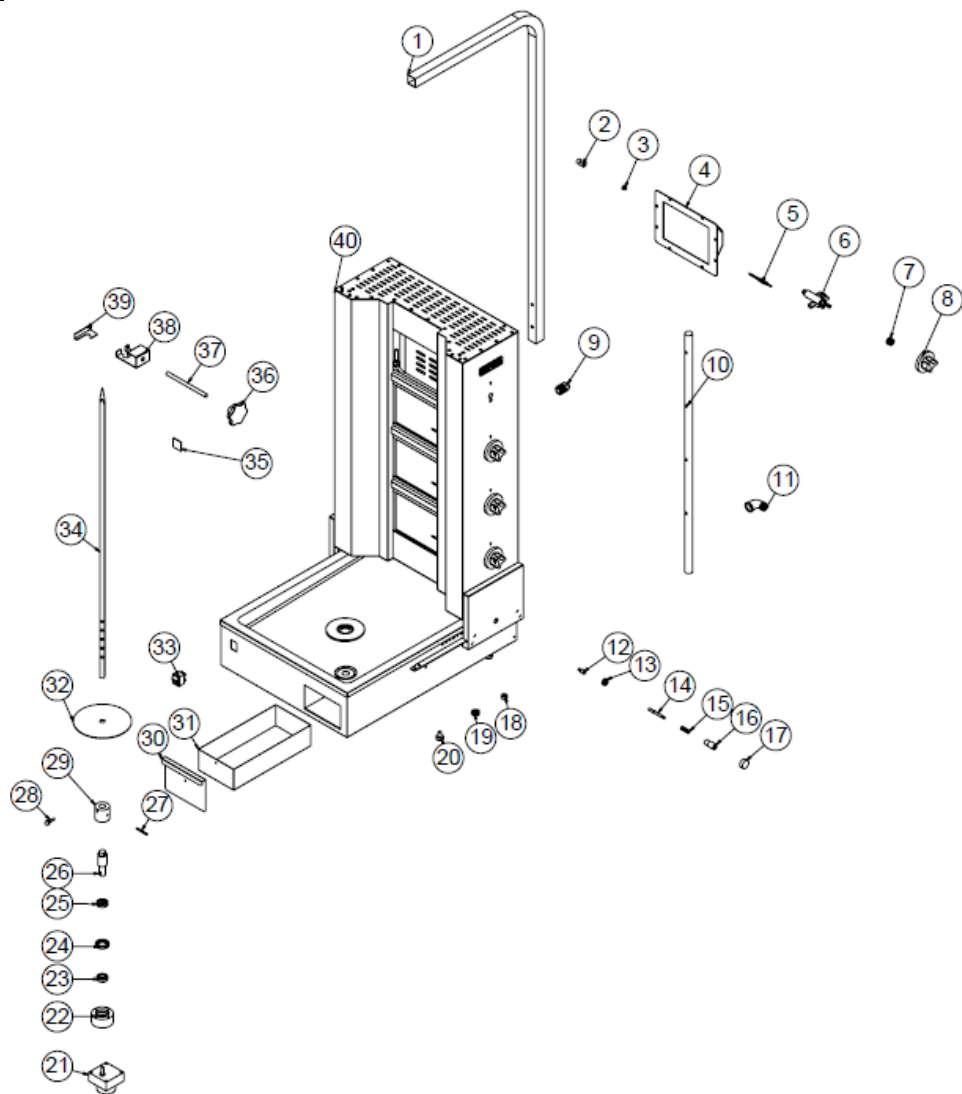
EMP.DN.150

## I SPARE PART LIST-EXPLODING DRAWING

PRODUCT CODE: EMP.DN.150		
NO	PRODUCT NAME	P.CODE
1	L PROFILE 30*30 1700 MM	YPR-KNX.DNR-KS-0008
2	PIPE FITTING	YTL-KNX.DNR-KS-0036
3	M4.5*0.5 INJECTOR 0.70 MM	M.GAZ-ENJ-NG-007
4	RADIANT	M.GAZ-BRL-RDY-001
5	THERMOELEMENT 150 MM M8*1	M.GAZ-TRL-001
6	GAS VALVE 19.28 1/4 G M8*1	M.GAZ-VNA-ECA-001
7	BUTTON SOCKET 8 MM	M.AKS-DGM-SKT-001
8	BUTTON	M.AKS-DGM-LVA-002
9	PG-11 CABLE FITTING	M.ELK-RKR-PLS-003
10	GAS TANK	M.GAZ-DPO-DN-001
11	BRACKET	JP.M.GAZ-TES-GLV-002
12	607 -2 RS BEARING	M.RLM-ISI-006
13	LINING PIN 2.5 CM	YTL-KNX.DNR-KS-0025
14	FIXING MECHANISM	YTL-KNX.DNR-KS-0029
15	Ø 8*35 SPRING	M.YAY-MUH-001
16	FIXING MECHANISM	YTL-KNX.DNR-KS-0023
17	FIXING MECHANISM	YTL-KNX.DNR-KS-0022
18	627 C 7*22 MM627ZZG17 BEARING	M.RLM-ISI-002
19	DERLIN	YTL-KNX.DNR-KS-0030
20	FOOT	M.AKS-AYK-PLS-001
21	PAN	YSC-KNX.DNR-PN-0087
22	PAN SHEET METAL	YSC-KNX.DNR-PN-0088
23	SKEWING DEVICE	YTL-KNX.DNR-KS-0037
24	220V 60HZ ENGINE	M.ELK-MTR-RMM-001
25	BEARING PLACE	YTL-KNX.DNR-KS-0031
26	SKEWING DEVICE MALE	YTL-KNX.DNR-KS-0018
27	BEARING 6805 ZZ	M.RLM-ISI-004
28	51103 BEARING	M.RLM-ISI-005
29	BEARING 6903 RS	M.RLM-ISI-003
30	SPRING COPPER	B-KPL-SYH-5*97
31	SHELF HANGER PIN	YTL-KNX.KFR-FS-0003
32	MEAT MIRROR	YSC-KNX.DNR-LZ-0046
33	SKEWING APPARATUS FEMALE	YTL-KNX.DNR-KS-0033
34	ROTARY BOTTLE 760 MM	YTL-KNX.DNR-KS-0032
35	KEY 0-1-2	M.ELK-SLT-AN-001
36	HANGER SHEET METAL	YSC-KNX.DNR-LZ-0049
37	M10*63 HANDLE	M.AKS-KLP-BKL-011
38	FIXING SCREW	YTL-KNX.DNR-KS-0004
39	HANGER SHEET METAL	YSC-KNX.DNR-LZ-0048
40	HANGER SHEET METAL	YSC-KNX.DNR-LZ-0047
41	CHASSIS	-

# SHAWARMA MACHINES (GASEOUS)

## I SPARE PART LIST-EXPLODING DRAWING



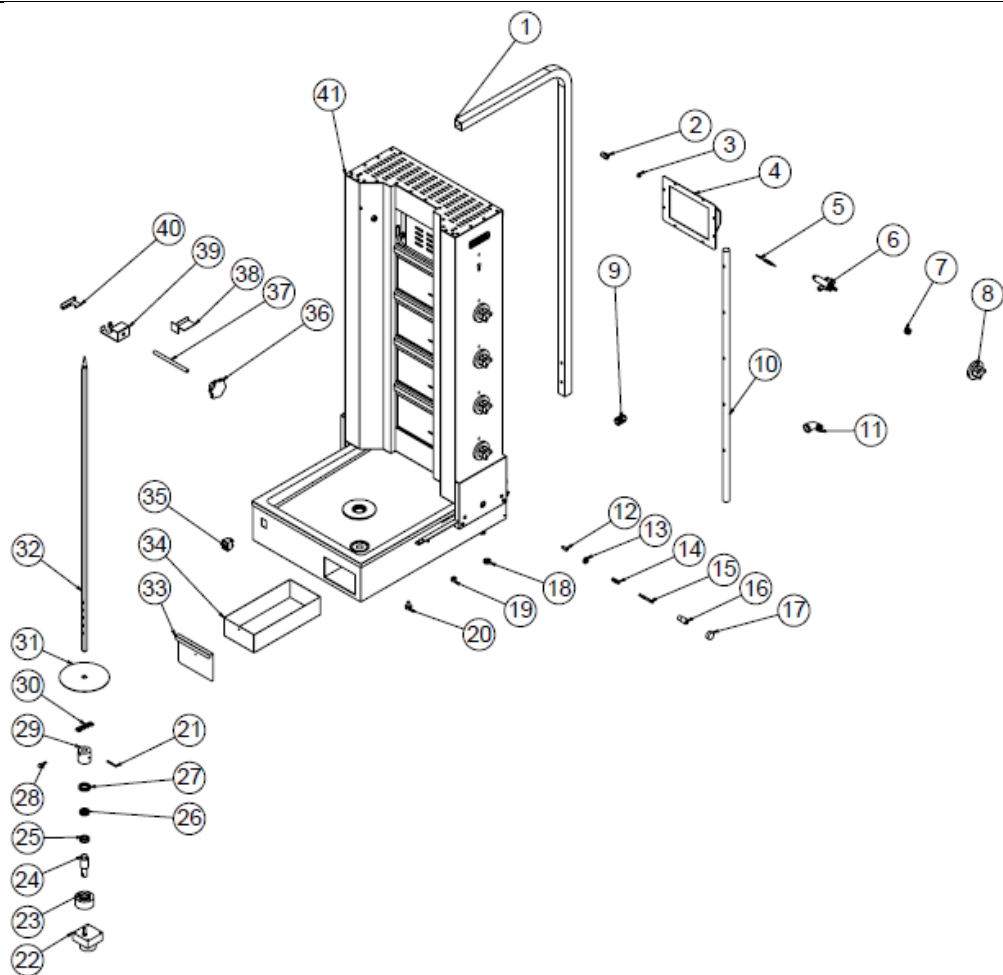
EMP.DN.151

## I SPARE PART LIST-EXPLODING DRAWING

PRODUCT CODE: EMP.DN.151		
NO	PRODUCT NAME	P.CODE
1	L PROFILE 30*30 1700 MM	YPR-KNX.DNR-KS-0019
2	PIPE FITTING	YTL-KNX.DNR-KS-0036
3	M4.5*0.5 INJECTOR 0.70 MM	M.GAZ-ENJ-NG-007
4	RADIANT	M.GAZ-BRL-RDY-001
5	THERMOELEMENT 150 MM M8*1	M.GAZ-TRL-001
6	GAS VALVE 19.28 1/4 G M8*1	M.GAZ-VNA-ECA-001
7	BUTTON SOCKET 8 MM	M.AKS-DGM-SKT-001
8	BUTTON	M.AKS-DGM-LVA-002
9	PG-11 CABLE FITTING	M.ELK-RKR-PLS-003
10	GAS TANK	M.GAZ-DPO-DN-002
11	BRACKET	JP.M.GAZ-TES-GLV-002
12	LINING PIN 2.5 CM	YTL-KNX.DNR-KS-0025
13	607 -2 RS BEARING	M.RLM-ISI-006
14	FIXING MECHANISM	YTL-KNX.DNR-KS-0029
15	Ø 8*35 SPRING	M.YAY-MUH-001
16	FIXING MECHANISM	YTL-KNX.DNR-KS-0023
17	FIXING MECHANISM	YTL-KNX.DNR-KS-0022
18	DERLIN	YTL-KNX.DNR-KS-0030
19	627 C 7*22 MM627ZZG17 BEARING	M.RLM-ISI-002
20	FOOT	M.AKS-AYK-PLS-001
21	220V 60HZ ENGINE	M.ELK-MTR-RMM-001
22	BEARING PLACE	YTL-KNX.DNR-KS-0031
23	BEARING 6903 RS	M.RLM-ISI-003
24	BEARING 6805 ZZ	M.RLM-ISI-004
25	51103 BEARING	M.RLM-ISI-005
26	SKEWING DEVICE MALE	YTL-KNX.DNR-KS-0018
27	SKEWING DEVICE	YTL-KNX.DNR-KS-0037
28	SHELF HANGER PIN	YTL-KNX.KFR-FS-0003
29	SKEWING APPARATUS FEMALE	YTL-KNX.DNR-KS-0033
30	PAN SHEET METAL	YSC-KNX.DNR-PN-0088
31	PAN	YSC-KNX.DNR-PN-0087
32	MEAT MIRROR	YSC-KNX.DNR-LZ-0046
33	KEY 0-1-2	M.ELK-SLT-AN-001
34	ROTARY SKEWERS 970 MM	YTL-KNX.DNR-KS-0010
35	COVER SHEET	YSC-KNX.DNR-LZ-0074
36	M10*63 HANDLE	M.AKS-KLP-BKL-011
37	FIXING SCREW	YTL-KNX.DNR-KS-0004
38	HANGER SHEET METAL	YSC-KNX.DNR-LZ-0048
39	HANGER SHEET METAL	YSC-KNX.DNR-LZ-0047
40	CHASSIS	-

# SHAWARMA MACHINES (GASEOUS)

## I SPARE PART LIST-EXPLODING DRAWING



EMP.DN.152

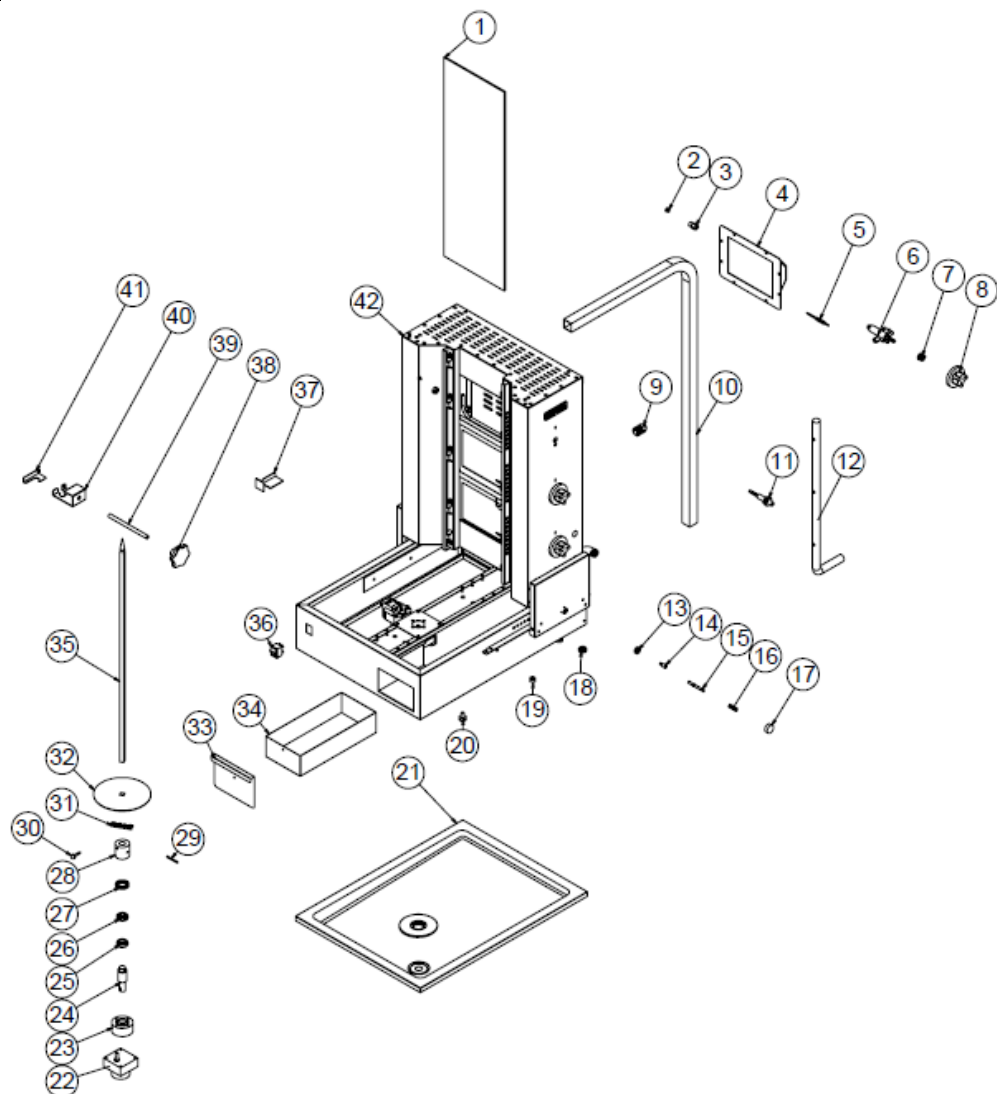
# SHAWARMA MACHINES (GASEOUS)

## I SPARE PART LIST-EXPLODING DRAWING

PRODUCT CODE: EMP.DN.152		
NO	PRODUCT NAME	P.CODE
1	L PROFILE 30*30 1700 MM	YPR-KNX.DNR-KS-0007
2	PIPE FITTING	YTL-KNX.DNR-KS-0036
3	M4.5*0.5 INJECTOR 0.70 MM	M.GAZ-ENJ-NG-007
4	RADIANT	M.GAZ-BRL-RDY-001
5	THERMOELEMENT 150 MM M8*1	M.GAZ-TRL-001
6	GAS VALVE 19.28 1/4 G M8*1	M.GAZ-VNA-ECA-001
7	BUTTON SOCKET 8 MM	M.AKS-DGM-SKT-001
8	BUTTON	M.AKS-DGM-LVA-002
9	PG-11 CABLE FITTING	M.ELK-RKR-PLS-003
10	GAS TANK	M.GAZ-DPO-DN-003
11	BRACKET	JP.M.GAZ-TES-GLV-002
12	LINING PIN 2.5 CM	YTL-KNX.DNR-KS-0025
13	607 -2 RS BEARING	M.RLM-ISI-006
14	Ø 8*35 SPRING	M.YAY-MUH-001
15	FIXING MECHANISM	YTL-KNX.DNR-KS-0029
16	FIXING MECHANISM	YTL-KNX.DNR-KS-0023
17	FIXING MECHANISM	YTL-KNX.DNR-KS-0022
18	627 C 7*22 MM627ZZG17 BEARING	M.RLM-ISI-002
19	DERLIN	YTL-KNX.DNR-KS-0030
20	FOOT	M.AKS-AYK-PLS-001
21	SKEWING DEVICE	YTL-KNX.DNR-KS-0037
22	220V 60HZ ENGINE	M.ELK-MTR-RMM-001
23	BEARING PLACE	YTL-KNX.DNR-KS-0031
24	SKEWING DEVICE MALE	YTL-KNX.DNR-KS-0018
25	BEARING 6903 RS	M.RLM-ISI-003
26	51103 BEARING	M.RLM-ISI-005
27	BEARING 6805 ZZ	M.RLM-ISI-004
28	SHELF HANGER PIN	YTL-KNX.KFR-FS-0003
29	SKEWING APPARATUS FEMALE	YTL-KNX.DNR-KS-0033
30	SPRING COPPER	B-KPL-SYH-5*97
31	MEAT MIRROR	YSC-KNX.DNR-LZ-0046
32	ROUND 1120 MM	YTL-KNX.DNR-KS-0006
33	PAN SHEET METAL	YSC-KNX.DNR-PN-0088
34	PAN	YSC-KNX.DNR-PN-0087
35	KEY 0-1-2	M.ELK-SLT-AN-001
36	M10*63 HANDLE	M.AKS-KLP-BKL-011
37	FIXING SCREW	YTL-KNX.DNR-KS-0004
38	HANGER SHEET METAL	YSC-KNX.DNR-LZ-0049
39	HANGER SHEET METAL	YSC-KNX.DNR-LZ-0048
40	HANGER SHEET METAL	YSC-KNX.DNR-LZ-0047
41	CHASSIS	-

# SHAWARMA MACHINES (GASEOUS)

## I SPARE PART LIST-EXPLODING DRAWING



EMP.DN.210

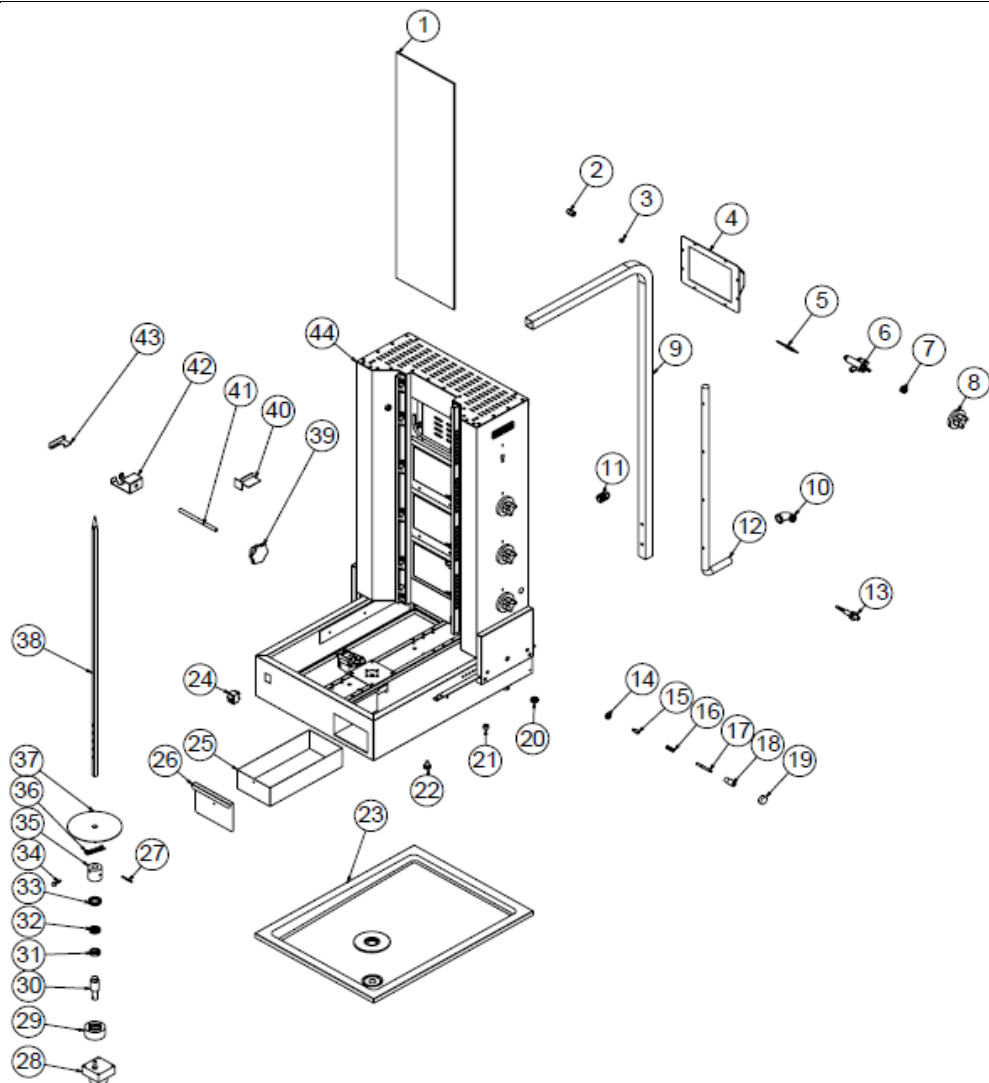
## I SPARE PART LIST-EXPLODING DRAWING

PRODUCT CODE: EMP.DN.210		
NO	PRODUCT NAME	P.CODE
1	680*240*4 MM GLASS	M.CAM-SRN-001
2	M4,5*0,5 INJECTOR 0,70 MM	M.GAZ-ENJ-NG-007
3	PIPE FITTING	YTL-KNX.DNR-KS-0036
4	RADIANT	M.GAZ-BRL-RDY-004
5	THERMOELEMENT 150 MM M8*1	M.GAZ-TRL-001
6	GAS VALVE 19.28 1/4 G M8*1	M.GAZ-VNA-ECA-001
7	BUTTON SOCKET 8 MM	M.AKS-DGM-SKT-001
8	BUTTON	M.AKS-DGM-LVA-002
9	PG-11 CABLE FITTING	M.ELK-RKR-PLS-003
10	L PROFILE 30*30 1700 MM	YPR-KNX.DNR-KS-0008
11	PIOZE LIGHTER Ø:18	M.GAZ-CKM-PIEZ-001
12	GAS TANK	M.GAZ-DPO-DN-001
13	607 -2 RS BEARING	M.RLM-ISI-006
14	LINING PIN 2.5 CM	YTL-KNX.DNR-KS-0025
15	FIXING MECHANISM	YTL-KNX.DNR-KS-0029
16	Ø 8*35 SPRING	M.YAY-MUH-001
17	FIXING MECHANISM	YTL-KNX.DNR-KS-0022
18	627 C 7*22 MM627ZZG17 BEARING	M.RLM-ISI-002
19	DERLIN	YTL-KNX.DNR-KS-0030
20	FOOT	M.AKS-AYK-PLS-001
21	PAN 49*66	M.MTS-KNX-DNR-001
22	220V 60HZ ENGINE	M.ELK-MTR-RMM-001
23	BEARING PLACE	YTL-KNX.DNR-KS-0031
24	SKEWING DEVICE MALE	YTL-KNX.DNR-KS-0018
25	BEARING 6903 RS	M.RLM-ISI-003
26	51103 BEARING	M.RLM-ISI-005
27	BEARING 6805 ZZ	M.RLM-ISI-004
28	SKEWING APPARATUS FEMALE	YTL-KNX.DNR-KS-0033
29	SKEWING DEVICE	YTL-KNX.DNR-KS-0037
30	SHELF HANGER PIN	YTL-KNX.KFR-FS-0003
31	SPRING COPPER	B-KPL-SYH-5*97
32	MEAT MIRROR	YSC-KNX.DNR-LZ-0046
33	PAN SHEET METAL	YSC-KNX.DNR-PN-0088
34	PAN	YSC-KNX.DNR-PN-0087
35	ROTARY SKEWERS 760 MM	YTL-KNX.DNR-KS-0032
36	KEY 0-1-2	M.ELK-SLT-AN-001
37	HANGER SHEET METAL	YSC-KNX.DNR-LZ-0049
38	M10*63 HANDLE	M.AKS-KLP-BKL-011
39	FIXING SCREW	YTL-KNX.DNR-KS-0004
40	HANGER SHEET METAL	YSC-KNX.DNR-LZ-0048
41	HANGER SHEET METAL	YSC-KNX.DNR-LZ-0047
42	CHASSIS	-



# SHAWARMA MACHINES (GASEOUS)

## I SPARE PART LIST-EXPLODING DRAWING



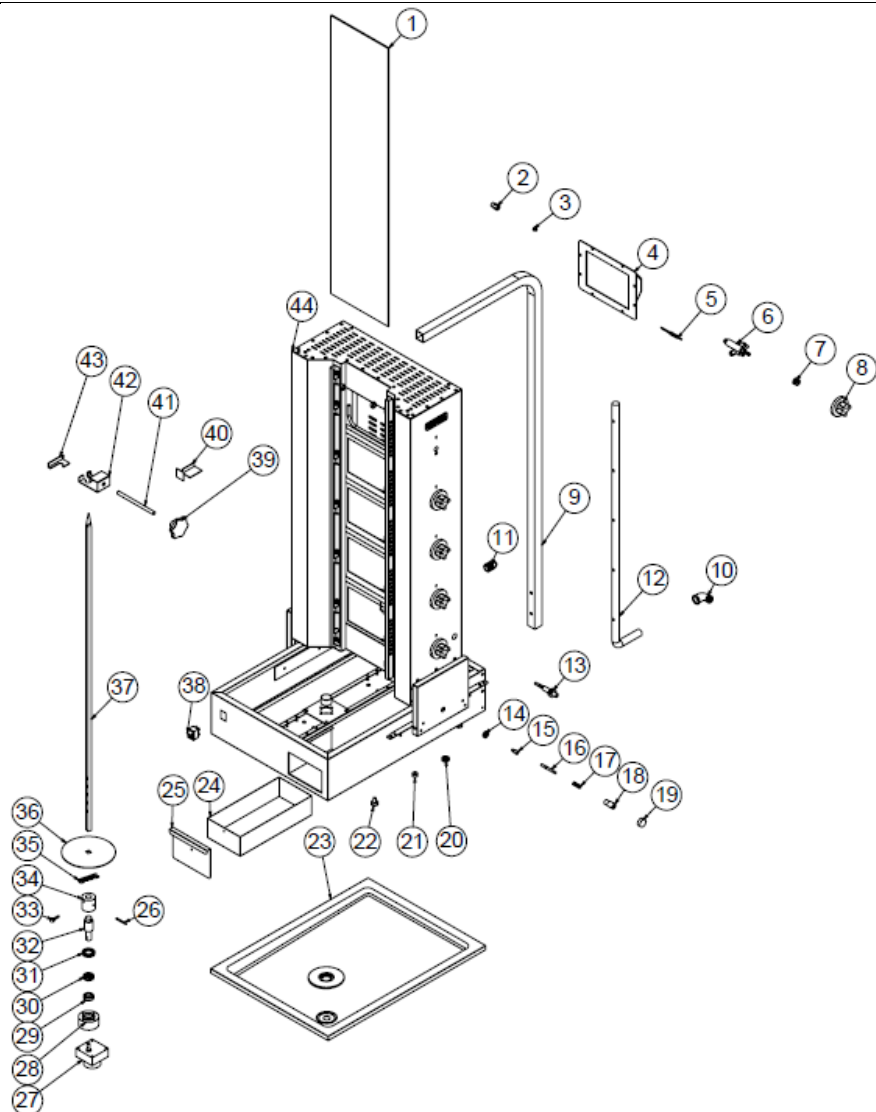
EMP.DN.211

## I SPARE PART LIST-EXPLODING DRAWING

PRODUCT CODE: EMP.DN.211		
NO	PRODUCT NAME	P.CODE
1	845*240*4 MM GLASS	M.CAM-SRN-002
2	PIPE FITTING	YTL-KNX.DNR-KS-0036
3	M4.5*0.5 INJECTOR 0.70 MM	M.GAZ-ENJ-NG-007
4	RADIANT	M.GAZ-BRI-RDY-004
5	THERMOELEMENT 150 MM M8*1	M.GAZ-TRL-001
6	GAS VALVE 19.28 1/4 G M8*1	M.GAZ-VNA-ECA-001
7	BUTTON SOCKET 8 MM	M.AKS-DGM-SKT-001
8	BUTTON	M.AKS-DGM-LVA-002
9	L PROFILE 30*30 1700 MM	YPR-KNX.DNR-KS-0019
10	BRACKET	JP.M.GAZ-TES-GLV-002
11	PG-11 CABLE FITTING	M.ELK-RKR-PLS-003
12	GAS TANK	M.GAZ-DPO-DN-002
13	PIOZE LIGHTER Ø:18	M.GAZ-CKM-PIEZ-001
14	607 -2 RS BEARING	M.RLM-ISI-006
15	LINING PIN 2.5 CM	YTL-KNX.DNR-KS-0025
16	Ø 8*35 SPRING	M.YAY-MUH-001
17	FIXING MECHANISM	YTL-KNX.DNR-KS-0029
18	FIXING MECHANISM	YTL-KNX.DNR-KS-0023
19	FIXING MECHANISM	YTL-KNX.DNR-KS-0022
20	627 C 7*22 MM627ZZG17 BEARING	M.RLM-ISI-002
21	DERLIN	YTL-KNX.DNR-KS-0030
22	FOOT	M.AKS-AYK-PLS-001
23	PAN 49*66	M.MTS-KNX-DNR-001
24	KEY 0-1-2	M.ELK-SLT-AN-001
25	PAN	YSC-KNX.DNR-PN-0087
26	PAN SHEET METAL	YSC-KNX.DNR-PN-0088
27	SKEWING DEVICE	YTL-KNX.DNR-KS-0037
28	220V 60HZ ENGINE	M.ELK-MTR-RMM-001
29	BEARING PLACE	YTL-KNX.DNR-KS-0031
30	SKEWING DEVICE MALE	YTL-KNX.DNR-KS-0018
31	BEARING 6903 RS	M.RLM-ISI-003
32	51103 BEARING	M.RLM-ISI-005
33	BEARING 6805 ZZ	M.RLM-ISI-004
34	SHELF HANGER PIN	YTL-KNX.KFR-FS-0003
35	SKEWING APPARATUS FEMALE	YTL-KNX.DNR-KS-0033
36	SPRING COPPER	B-KPL-SYH-5*97
37	MEAT MIRROR	YSC-KNX.DNR-LZ-0046
38	ROTARY SKEWERS 970 MM	YTL-KNX.DNR-KS-0010
39	M10*63 HANDLE	M.AKS-KLP-BKL-011
40	HANGER SHEET METAL	YSC-KNX.DNR-LZ-0049
41	FIXING SCREW	YTL-KNX.DNR-KS-0004
42	HANGER SHEET METAL	YSC-KNX.DNR-LZ-0048
43	HANGER SHEET METAL	YSC-KNX.DNR-LZ-0047
44	CHASSIS	-

# SHAWARMA MACHINES (GASEOUS)

## I SPARE PART LIST-EXPLODING DRAWING



EMP.DN.212

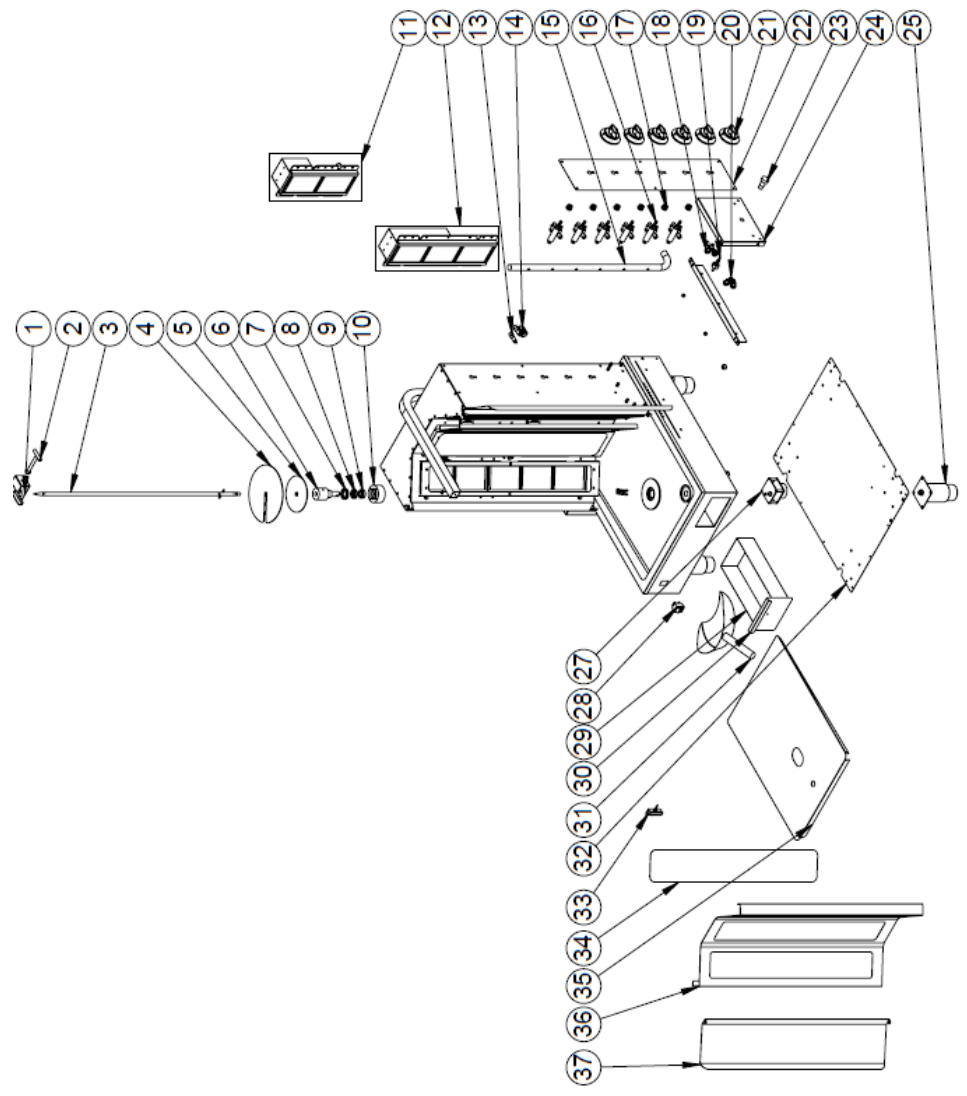
# SHAWARMA MACHINES (GASEOUS)

## I SPARE PART LIST-EXPLODING DRAWING

PRODUCT CODE: EMP.DN.212		
NO	PRODUCT NAME	P.CODE
1	1010*240*4 MM GLASS	M.CAM-SRN-004
2	PIPE FITTING	YTL-KNX.DNR-KS-0036
3	M4.5*0.5 INJECTOR 0.70 MM	M.GAZ-ENJ-NG-007
4	RADIANT	M.GAZ-BRI-RDY-004
5	THERMOELEMENT 150 MM M8*1	M.GAZ-TRL-001
6	GAS VALVE 19.28 1/4 G M8*1	M.GAZ-VNA-ECA-001
7	BUTTON SOCKET 8 MM	M.AKS-DGM-SKT-001
8	BUTTON	M.AKS-DGM-LVA-002
9	L PROFILE 30*30 1700 MM	YPR-KNX.DNR-KS-0007
10	BRACKET	JP.M.GAZ-TES-GLV-002
11	PG-11 CABLE FITTING	M.ELK-RKR-PLS-003
12	GAS TANK	M.GAZ-DPO-DN-003
13	PIOZE LIGHTER Ø:18	M.GAZ-CKM-PIEZ-001
14	607 -2 RS BEARING	M.RLM-ISI-006
15	LINING PIN 2.5 CM	YTL-KNX.DNR-KS-0025
16	FIXING MECHANISM	YTL-KNX.DNR-KS-0029
17	Ø 8*35 SPRING	M.YAY-MUH-001
18	FIXING MECHANISM	YTL-KNX.DNR-KS-0023
19	FIXING MECHANISM	YTL-KNX.DNR-KS-0022
20	627 C 7*22 MM627ZZG17 BEARING	M.RLM-ISI-002
21	DERLIN	YTL-KNX.DNR-KS-0030
22	FOOT	M.AKS-AYK-PLS-001
23	PAN 49*66	M.MTS-KNX-DNR-001
24	PAN	YSC-KNX.DNR-PN-0087
25	PAN SHEET METAL	YSC-KNX.DNR-PN-0088
26	SKIEWING DEVICE	YTL-KNX.DNR-KS-0037
27	220V 60HZ ENGINE	M.ELK-MTR-RMM-001
28	BEARING PLACE	YTL-KNX.DNR-KS-0031
29	BEARING 6903 RS	M.RLM-ISI-003
30	51103 BEARING	M.RLM-ISI-005
31	BEARING 6805 ZZ	M.RLM-ISI-004
32	SKIEWING DEVICE MALE	YTL-KNX.DNR-KS-0018
33	SHELF HANGER PIN	YTL-KNX.KFR-FS-0003
34	SKIEWING APPARATUS FEMALE	YTL-KNX.DNR-KS-0033
35	SPRING COPPER	B-KPL-SYH-5*97
36	MEAT MIRROR	YSC-KNX.DNR-LZ-0046
37	ROUND 1120 MM	YTL-KNX.DNR-KS-0006
38	KEY 0-1-2	M.ELK-SLT-AN-001
39	M10*63 HANDLE	M.AKS-KLP-BKL-011
40	HANGER SHEET METAL	YSC-KNX.DNR-LZ-0049
41	FIXING SCREW	YTL-KNX.DNR-KS-0004
42	HANGER SHEET METAL	YSC-KNX.DNR-LZ-0048
43	HANGER SHEET METAL	YSC-KNX.DNR-LZ-0047
44	CHASSIS	-

# SHAWARMA MACHINES (GASEOUS)

## I SPARE PART LIST-EXPLODING DRAWING



# SHAWARMA MACHINES (GASEOUS)

DN.150-3R		
NO	NAME OF THE PRODUCT	PRODUCT CODE
1	YTL-KNX.DNR-KS-0060	EMP.DN.150-3R-UL SKEWER APPARATUS FIXING SCREW
2	ABD-ENDS-3R-DN1	MEAT SKEWER FIXING MON
3	YTL-KNX.DNR-KS-0055	EMP.DN.150-3R-UL DOER SKEWER 865 MM
4	YSC-KNX.DNR-LZ-0213	EMP.DN.150-3R-UL DIAMETER 200MM ET CHUCK SC
5	YSC-KNX.DNR-LZ-0214	EMP.DN.150-3R-UL DIAMETER 125MM ET CHUCK SC
6	ABD-ENDS-3R DN1	BEARING SHAFT MON
7	M.RLM-ISI-004	25x37x7 BEARING (6805 ZZ)
8	M.RLM-ISI-005	17x31x8 BEARING (51103)
9	M.RLM-ISI-003	17x30x9 BEARING (6903)
10	YTL-KNX.DNR-KS-0031	EMP.KLG.015 (F1) BEARING HOUSING-3.4 CM
11	ARA-KNX.DNR-0007	EMP.DN.150-3R-UL-3T BURNER INTERMEDIATE ASSEMBLY-NEW
12	ARA-KNX.DNR-0008	EMP.DN.150-3R-UL-2T BURNER INTERMEDIATE ASSEMBLY-NEW
13	M.ELK-SGR-KTU-002	FUSE HOLDER, 5X20 MM,10A,250V,CENTRAL MOUNNT ENG, 3101.0215 SCHURTER SİGORTA NEST"
14	M.ELK-RKR-PLS-003	PG-11 GRAY CABLE GLAND WITH NUT
15	M.GAZ-DPO-DN-012	GAS TANK DN 150-3R
16	M.GAZ-VNA-ECA-001	FAUCET LİVA 19.28 ECA 703882148 EQUIVALENT A18-X18 VIRTUAL FAUCET BUTTON SOCKET 8.6 MM
17	M.AKS-DGM-SKT-009	GAZLI Ü.-UL
18	YSC-KNX.DNR-LZ-0045	DN151-Y LOWER GUIDE PLATE
19	M.RLM-ISI-006	7x19x6 BEARING (607 2RS)
20	M.RLM-ISI-002	7x22x7 BEARING (627 Z2C3)
21	YTL-KNX.DNR-KS-0025	SLIDE SYSTEM BEARING GROUP CONNECTING PIN 2.5 CM (ROTARY BEARING DIAMETER 10)
22	M.AKS-DGM-EMP-024	EMP BUTTON ARROW PRINTED IN BLACK
23	M.AKS-ETK-ALM-083	EMP.DN.150-3R ALM LABEL
24	YTL-KNX.DNR-KS-0023	SLIDING SYSTEM FIXING MECHANISM (BODY CONNECTION)

# SHAWARMA MACHINES (GASEOUS)

25	YSC-KNX.DNR-LZ-0042	DN-150-Y-BEARING BG-SC-RIGHT
26	M.AKS-AYK-INX-001	13 CM CHROME PIPE FOOT ASSEMBLY-1
27	M.ELK-MTR-RMM-001	220V 60Hz 1 RPM DÖNER FURNACE ENGINE EDM. T105 16A 1-3 HP 125-250 VAC 0-1-2 BLACK SWITCH
28	M.ELK-SLT-AN-003	GREAT-USA"
29	YSC-KNX.DNR-PN-0087	DN151-Y OIL PAN
30	YSC-KNX.DNR-PN-0088	DN151-Y OIL PAN FRONT SHEET
31	M.MUH-066	EMP.DN.UL COLLECTING SHOULDER
32	YSC-KNX.DNR-PN-0091	DN151-Y BOTTOM COVER
33	M.GAZ-TRL-003	THERMO ELEMENT
34	EMP.DN.150-3R-UL	WIRE GRILL
35	YSC-KNX.DNR-PN-0158	EMP.DN.150-3R-UL STRAINER
36	YSC-KNX.DNR-LZ-0292	EMP.DN.150-3R-USA WIRE SHEET 2
37	YSC-KNX.DNR-LZ-0210	EMP.DN.150-3R-UL FAN SHEET

# SHAWARMA MACHINES (GASEOUS)

## J ELECTRIC CIRCUIT SCHEMA

