

# SHAWARMA MACHINES (ELECTRICAL)

## CONTENTS

---

<b>A</b>	<b>GENERAL INFORMATION .....</b>	<b>Page 2</b>
A1	PRODUCT DESCRIPTION.....	Page 3
A2	TECHNICAL INFORMATION .....	Page 3
A3	TRANSPORTATION .....	Page 4
A4	UNPACKING .....	Page 4
<b>B</b>	<b>INSTALLATION .....</b>	<b>Page 4</b>
<b>C</b>	<b>SAFETY INSTRUCTIONS .....</b>	<b>Page 5</b>
<b>D</b>	<b>OPERATION .....</b>	<b>Page 6</b>
<b>E</b>	<b>CLEANING &amp; MAINTENANCE .....</b>	<b>Page 7</b>
<b>F</b>	<b>TROUBLESHOOTING .....</b>	<b>Page 8</b>
<b>G</b>	<b>SPARE PART LIST- EXPLODING DRAWING .....</b>	<b>Page 9</b>
<b>H</b>	<b>ELECTRIC CIRCUIT SCHEMA .....</b>	<b>Page 15</b>

## A GENERAL INFORMATION

---

Before installing the appliance, read operation and maintenance instructions carefully. Wrong installation and part changing may damage the product or may cause injury on people. These are not in our company's responsibility to damage the appliance intentionally, negligence, detriments because of disobeying instructions and regulations, wrong connections. Unauthorized intervention to appliance invalidates the warranty.

1. This instruction manual should be kept in a safe place for future reference.
2. **Installation should be made in accordance with ordinances and security rules of that country by a qualified service personnel.**
3. This appliance has to be used by trained person.
4. Please turn off the appliance immediately in the event of malfunction or failure. The appliance should be repaired only by authorized service personnel. Please demand original spare part.

## SHAWARMA MACHINES (ELECTRICAL)

### A1 PRODUCT DESCRIPTION

\*The Professional Shawarma Machines, that provides high efficiency has been designed to be used in industrial kitchens.

Product Code	Dimensions (mm)	Weight (kg)	Packaging Dimensions (mm)
EMP.DN.170	568x706x964	36	740X650X990
EMP.DN.171	568x705x1158	41	740x650x1220
EMP.DN.172	568x706x1337	53	620x720x1320

### A2 TECHNICAL INFORMATION

Product Code	Model	Heater	Power (KW)	Oper. Voltage (V)	Cable (mm <sup>2</sup> )	Fuse (A)
EMP.DN.170	Lower Motor with Glass	3	4,2	380	5x2,5 TTR	3x16
EMP.DN.171	Lower Motor with Glass	4	5,6	380	5x2,5 TTR	3x16
EMP.DN.172	Lower Motor with Glass	5	7	380	5x2,5 TTR	3x25

## SHAWARMA MACHINES (ELECTRICAL)

### A3 TRANSPORTATION

---

\*This appliance can not be moved by hand from area to area. It must be moved on pallet with forklift truck.

### A4 UNPACKING

---

\*Please unpack the package according to the security codes and ordinances of current country and get rid from the pack. Parts which contacts with food are produced by stainless steel. All plastic parts are marked by material's symbol.

\*Please check that all the parts of appliance had come completely and if they are damaged or not during the shipping.

### B INSTALLATION


---

\*Please place the product to straight and sturdy ground, please take necessary steps against possibility of overturn.

\*Technician who will serve for installation and service for the appliance must be professional on this subject and must have installation and service licenses by the company.

\*Connection to Electric Power Supply must be done by authorized person.

\*Please be sure that the voltage connected to appliance must be equal with the voltage which is on appliance's label.

 This appliance must be connected to an earthed outlet in accordance with safety rules and standards.

\*Appliance's earthing must be connected to earthing line on panel which is nearest to electric installation.









\*Connection to the main fuse and leak current fuse must be done in accordance with the current regulations.

\*If the location where shawarma machines placed is covered with nonflammable heat insulation material, the distance between them must be 5 cm. Otherwise it should be at least 20 cm. The appliance shouldn't be operated under chimney hood.

## SHAWARMA MACHINES (ELECTRICAL)

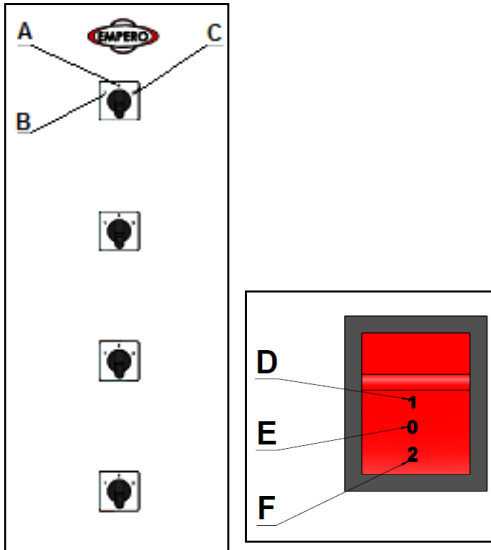
### C SAFETY INSTRUCTIONS

---

-  \*Do not use the appliance in insufficient lighted place .
-  \*Do not touch the moving attachments while the appliance operates.
-  \*Do not install the appliance in the presence of flammable or explosive materials.
-  \*Do not operate the appliance when the machine is empty.
-  \*Do not load so less or more than appliance's capacity .
-  \*Do not attempt to use the appliance without suitable protective equipments.
-  \*Because of any reason if there is a fire or flame flare where the appliance is used,turn off all gas valves and electric contactor switch quickly and use fire extinguisher .Never use water to extinguish the fire.
-  \*All the damages because of not having earthing connection will not be on warranty.

## D OPERATION

### \*Control Panel;



- A** : Stop/OFF
- B** : 1. Stage Heat
- C** : 2. Stage Heat
- D** : (1) Clockwise
- E** : (0) Switch Off
- F** : (2) Anticlockwise

### \*Operating;

- Plug in the appliance.
- Take off the skewers and place the meats to the skewers.
- In order to fire the radian,switch to desired heat setting.
- In order to operate electric motor,switch on.
- When the switch is at (1) position,the skewer turns on the direction of clockwise,when it is at (2) position,the skewer turns on the direction of anticlockwise.
- While the skewer is moving forward-back on the direction of radian,you can adjust the suitable distance between radian-skewer during cooking.
- Cooked meats can be accumulated at spillage tray with the help of shawarma blades.
- After cooking process,switch off the radian.
- In order to turn off the motor that operates the skewer,switch off or unplug the appliance.

## SHAWARMA MACHINES (ELECTRICAL)

### **E      CLEANING & MAINTENANCE**

---

#### ➤ **CLEANING AND MAINTENANCE AFTER EVERY USE**

- After every meat cooking process, clean the body, spillage tray, skewer and radian.
- Always turn off the appliance and disconnect from the power supply before cleaning.
- Do not use abrasive cleaning chemicals as these can leave harmful residues.
- Do not clean the appliance by spraying water directly, otherwise electric motor may get damaged.
- Make the residue of meat and burnt oil wait that accumulated at spillage tray wait at hot water and scrape with spatula.
- At shawarma machines with glass, clean the thermal glass after every use.

#### ➤ **PERIODIC CLEANING AND MAINTENANCE**

- Maintenance should be done by qualified person.
- Get the periodic maintenance of the appliance once in every 15 days.
- The Shawarma Machines require low maintenance (Motor and ball bearings are lubricated).
- Maintain the moving slides of shawarma machines,
- Maintenance of the appliance's contactor should be done by compressed air according to frequency of use.



## SHAWARMA MACHINES (ELECTRICAL)

### F TROUBLESHOOTING

<b>THE APPLIANCE DOESN'T OPERATE</b>	<ol style="list-style-type: none"><li>1. Check if the appliance is plugged in.</li><li>2. Check the electrical connections and voltage.</li></ol>
--------------------------------------	---

<b>MEATS ARE NOT COOKED WELL</b>	<ol style="list-style-type: none"><li>1. Check the distance between skewer-radian.</li><li>2. Do not put meat on the skewer more than it's capacity.</li></ol>
----------------------------------	--

<b>THE APPLIANCE STOPPED</b>	<ol style="list-style-type: none"><li>1. The appliance can stop due to low voltage. In this situation check the voltage.</li></ol>
------------------------------	--

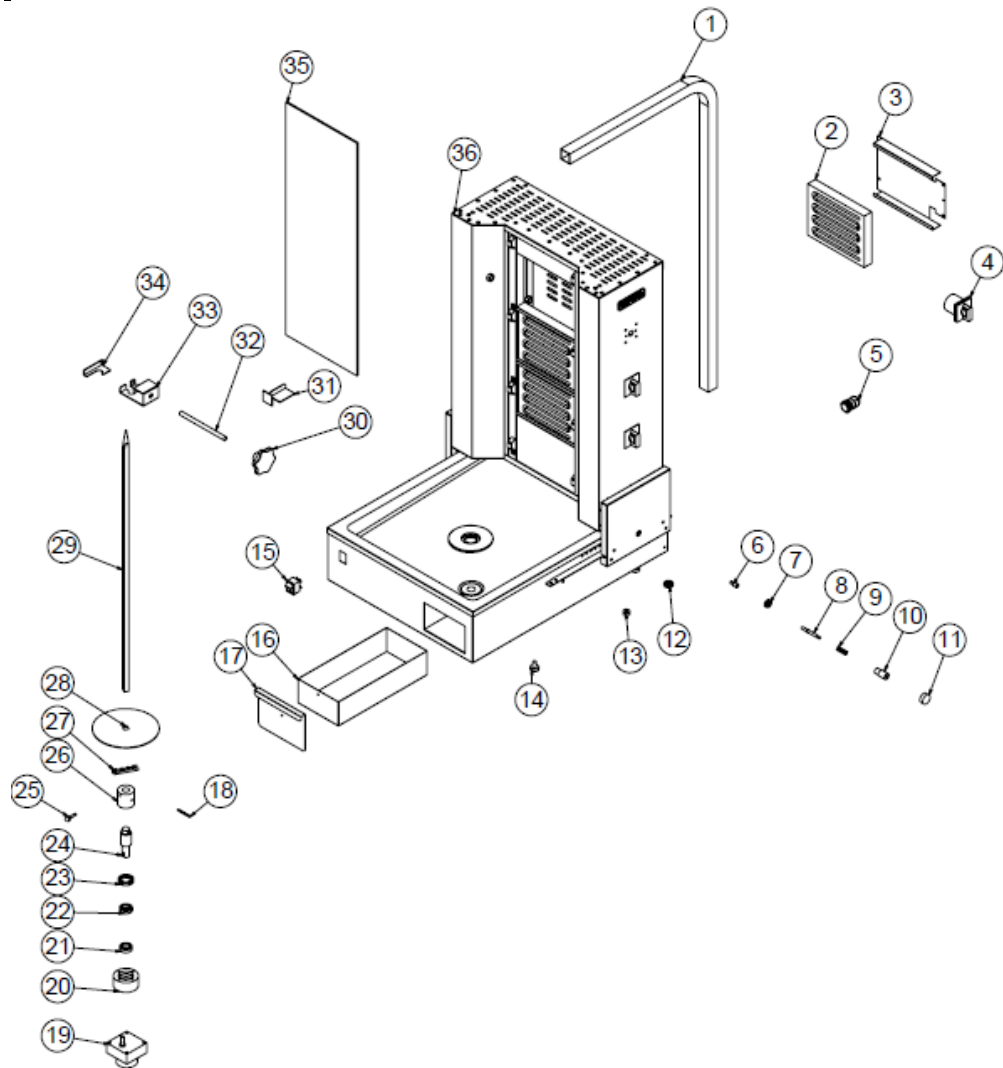
<ul style="list-style-type: none"><li>• If cooking with shawarma machine is not done at suitable quality</li><li>• If any function of security doesn't work<ul style="list-style-type: none"><li>➤ Do not use the appliance.</li></ul></li></ul>
--

**\*If these problems are still going on, contact with our authorized services.**



# SHAWARMA MACHINES (ELECTRICAL)

## G SPARE PART LIST-EXPLODING DRAWING



EMP.DN.170

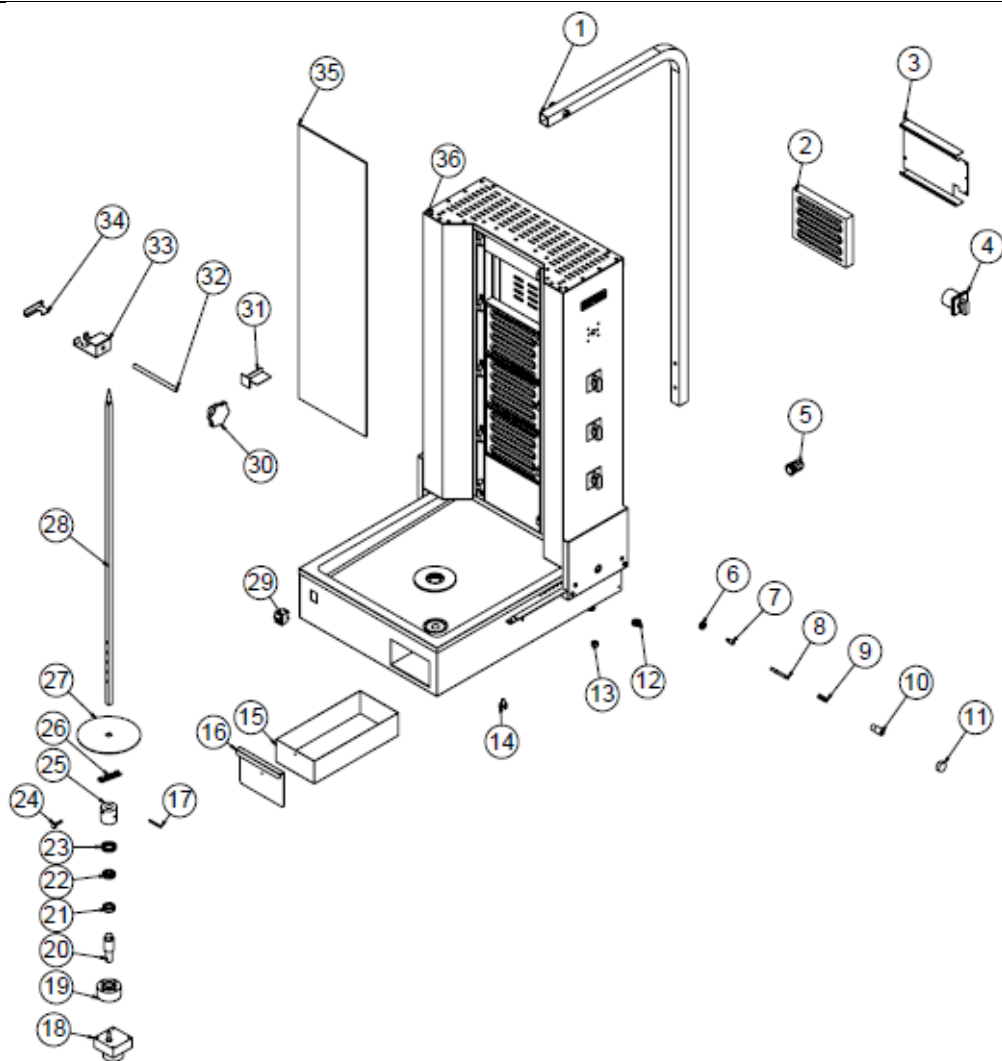
# SHAWARMA MACHINES (ELECTRICAL)

## G SPARE PART LIST-EXPLODING DRAWING

PRODUCT CODE: EMP.DN.170		
NO	PRODUCT NAME	P.CODE
1	L PROFILE 30*30 1700 MM	YPR-KNX.DNR-KS-0008
2	380V RESISTANCE	M.ELK-RZS-FIB-001
3	RESISTANCE SHEET METAL	YSC-KNX.DNR-PN-0056
4	SWITCH	JP.M.ELK-SLT-PKO-013
5	PG-16 CABLE FITTING	JP.M.ELK-RKR-PLS-001
6	LINING PIN 2.5 CM	YTL-KNX.DNR-KS-0025
7	607 -2 RS BEARING	M.RLM-ISI-006
8	FIXING MECHANISM	YTL-KNX.DNR-KS-0029
9	Ø 8*35 SPRING	M.YAY-MUH-001
10	FIXING MECHANISM	YTL-KNX.DNR-KS-0023
11	FIXING MECHANISM	YTL-KNX.DNR-KS-0022
12	627 C 7*22 MM627ZZG17 BEARING	M.RLM-ISI-002
13	DERLIN	YTL-KNX.DNR-KS-0030
14	FOOT	M.AKS-AYK-PLS-001
15	KEY 0-1-2	M.ELK-SLT-AN-001
16	PAN	YSC-KNX.DNR-PN-0087
17	PAN SHEET METAL	YSC-KNX.DNR-PN-0088
18	SKEWING DEVICE	YTL-KNX.DNR-KS-0037
19	220V 60HZ ENGINE	M.ELK-MTR-RMM-001
20	BEARING PLACE	YTL-KNX.DNR-KS-0031
21	BEARING 6903 RS	M.RLM-ISI-003
22	51103 BEARING	M.RLM-ISI-005
23	BEARING 6805 ZZ	M.RLM-ISI-004
24	SKEWING DEVICE MALE	YTL-KNX.DNR-KS-0018
25	SHELF HANGER PIN	YTL-KNX.KFR-FS-0003
26	SKEWING APPARATUS FEMALE	YTL-KNX.DNR-KS-0033
27	SPRING COPPER	B-KPL-SYH-5*97
28	MEAT MIRROR	YSC-KNX.DNR-LZ-0046
29	ROTARY BOTTLE 760 MM	YTL-KNX.DNR-KS-0032
30	M10*63 HANDLE	M.AKS-KLP-BKL-011
31	HANGER SHEET METAL	YSC-KNX.DNR-LZ-0049
32	FIXING SCREW	YTL-KNX.DNR-KS-0004
33	HANGER SHEET METAL	YSC-KNX.DNR-LZ-0048
34	HANGER SHEET METAL	YSC-KNX.DNR-LZ-0047
35	680*240*4 MM GLASS	M.CAM-SRN-001
36	CHASSIS	-

# SHAWARMA MACHINES (ELECTRICAL)

## G SPARE PART LIST-EXPLODING DRAWING



EMP.DN.171

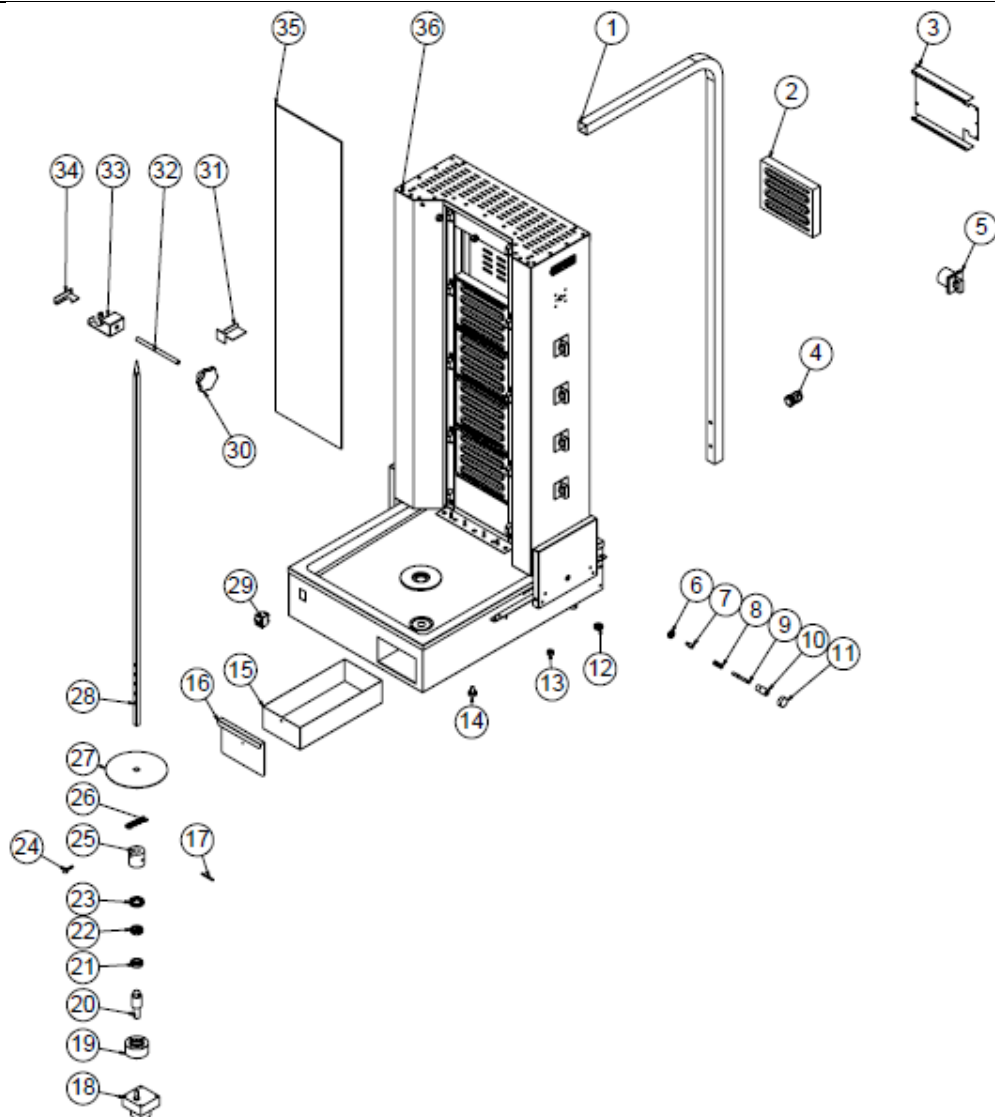
# SHAWARMA MACHINES (ELECTRICAL)

## G SPARE PART LIST-EXPLODING DRAWING

PRODUCT CODE: EMP.DN.171		
NO	PRODUCT NAME	P.CODE
1	L PROFILE 30*30 1700 MM	YPR-KNX.DNR-KS-0019
2	380V RESISTANCE	M.ELK-RZS-FIB-001
3	RESISTANCE SHEET METAL	YSC-KNX.DNR-PN-0056
4	SWITCH	JP.M.ELK-SLT-PKO-013
5	PG-16 CABLE FITTING	JP.M.ELK-RKR-PLS-001
6	607 -2 RS BEARING	M.RLM-ISI-006
7	LINING PIN 2.5 CM	YTL-KNX.DNR-KS-0025
8	FIXING MECHANISM	YTL-KNX.DNR-KS-0029
9	Ø 8*35 SPRING	M.YAY-MUH-001
10	FIXING MECHANISM	YTL-KNX.DNR-KS-0023
11	FIXING MECHANISM	YTL-KNX.DNR-KS-0022
12	627 C 7*22 MM627ZZG17 BEARING	M.RLM-ISI-002
13	DERLIN	YTL-KNX.DNR-KS-0030
14	FOOT	M.AKS-AYK-PLS-001
15	PAN	YSC-KNX.DNR-PN-0087
16	PAN SHEET METAL	YSC-KNX.DNR-PN-0088
17	SKEWING DEVICE	YTL-KNX.DNR-KS-0037
18	220V 60HZ ENGINE	M.ELK-MTR-RMM-001
19	BEARING PLACE	YTL-KNX.DNR-KS-0031
20	SKEWING DEVICE MALE	YTL-KNX.DNR-KS-0018
21	BEARING 6903 RS	M.RLM-ISI-003
22	51103 BEARING	M.RLM-ISI-005
23	BEARING 6805 ZZ	M.RLM-ISI-004
24	SHELF HANGER PIN	YTL-KNX.KFR-FS-0003
25	SKEWING APPARATUS FEMALE	YTL-KNX.DNR-KS-0033
26	SPRING COPPER	B-KPL-SYH-5*97
27	MEAT MIRROR	YSC-KNX.DNR-LZ-0046
28	ROTARY SKEWERS 970 MM	YTL-KNX.DNR-KS-0010
29	KEY 0-1-2	M.ELK-SLT-AN-001
30	M10*63 HANDLE	M.AKS-KLP-BKL-011
31	HANGER SHEET METAL	YSC-KNX.DNR-LZ-0049
32	FIXING SCREW	YTL-KNX.DNR-KS-0004
33	HANGER SHEET METAL	YSC-KNX.DNR-LZ-0048
34	HANGER SHEET METAL	YSC-KNX.DNR-LZ-0047
35	845*240*4 MM GLASS	M.CAM-SRN-002
36	CHASSIS	-

# SHAWARMA MACHINES (ELECTRICAL)

## G SPARE PART LIST-EXPLODING DRAWING



EMP.DN.172

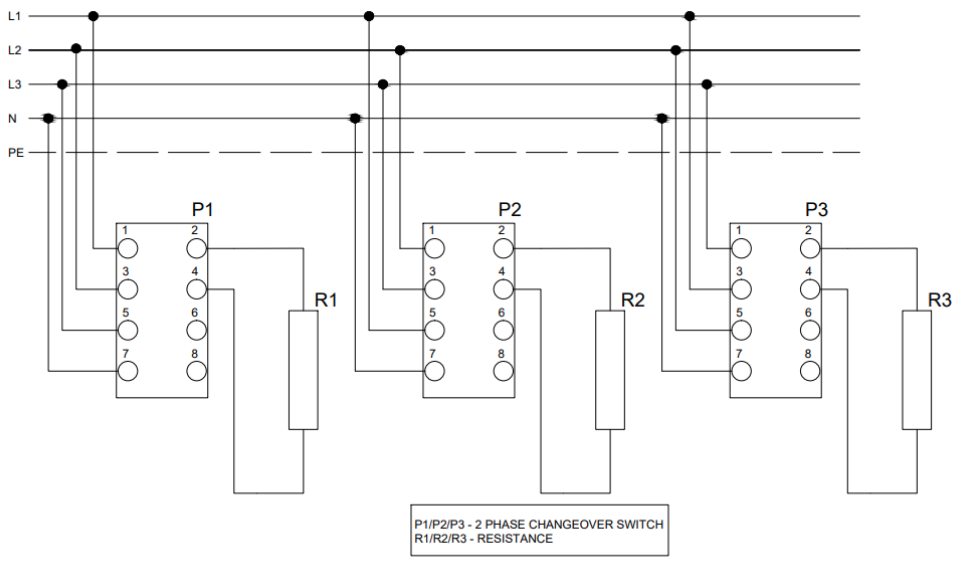
# SHAWARMA MACHINES (ELECTRICAL)

## G SPARE PART LIST-EXPLODING DRAWING

PRODUCT CODE: EMP.DN.172		
NO	PRODUCT NAME	P.CODE
1	L PROFILE 30*30 1700 MM	YPR-KNX.DNR-KS-0007
2	380V RESISTANCE	M.ELK-RZS-FIB-001
3	RESISTANCE SHEET METAL	YSC-KNX.DNR-PN-0056
4	PG-16 CABLE FITTING	JP.M.ELK-RKR-PLS-001
5	SWITCH	JP.M.ELK-SLT-PKO-013
6	607 -2 RS BEARING	M.RLM-ISI-006
7	LINING PIN 2.5 CM	YTL-KNX.DNR-KS-0025
8	Ø 8*35 SPRING	M.YAY-MUH-001
9	FIXING MECHANISM	YTL-KNX.DNR-KS-0029
10	FIXING MECHANISM	YTL-KNX.DNR-KS-0023
11	FIXING MECHANISM	YTL-KNX.DNR-KS-0022
12	627 C 7*22 MM627ZZG17 BEARING	M.RLM-ISI-002
13	DERLIN	YTL-KNX.DNR-KS-0030
14	FOOT	M.AKS-AYK-PLS-001
15	PAN	YSC-KNX.DNR-PN-0087
16	PAN SHEET METAL	YSC-KNX.DNR-PN-0088
17	SKEWING DEVICE	YTL-KNX.DNR-KS-0037
18	220V 60HZ ENGINE	M.ELK-MTR-RMM-001
19	BEARING PLACE	YTL-KNX.DNR-KS-0031
20	SKEWING DEVICE MALE	YTL-KNX.DNR-KS-0018
21	BEARING 6903 RS	M.RLM-ISI-003
22	51103 BEARING	M.RLM-ISI-005
23	BEARING 6805 ZZ	M.RLM-ISI-004
24	SHELF HANGER PIN	YTL-KNX.KFR-FS-0003
25	SKEWING APPARATUS FEMALE	YTL-KNX.DNR-KS-0033
26	SPRING COPPER	B-KPL-SYH-5*97
27	MEAT MIRROR	YSC-KNX.DNR-LZ-0046
28	ROUND 1120 MM	YTL-KNX.DNR-KS-0006
29	KEY 0-1-2	M.ELK-SLT-AN-001
30	M10*63 HANDLE	M.AKS-KLP-BKL-011
31	HANGER SHEET METAL	YSC-KNX.DNR-LZ-0049
32	FIXING SCREW	YTL-KNX.DNR-KS-0004
33	HANGER SHEET METAL	YSC-KNX.DNR-LZ-0048
34	HANGER SHEET METAL	YSC-KNX.DNR-LZ-0047
35	970*240*4 MM GLASS	M.CAM-SRN-003
36	CHASSIS	-

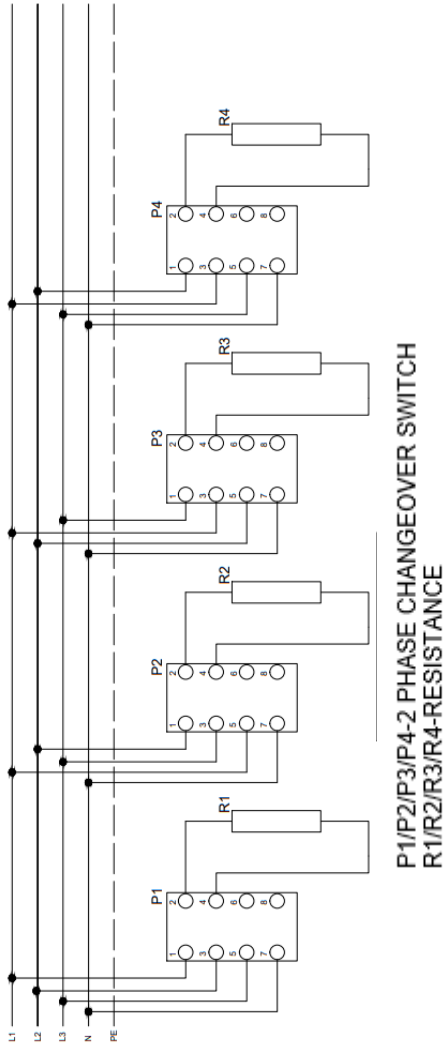
# SHAWARMA MACHINES (ELECTRICAL)

## H ELECTRIC CIRCUIT SCHEMA



# SHAWARMA MACHINES (ELECTRICAL)

## H ELECTRIC CIRCUIT SCHEMA

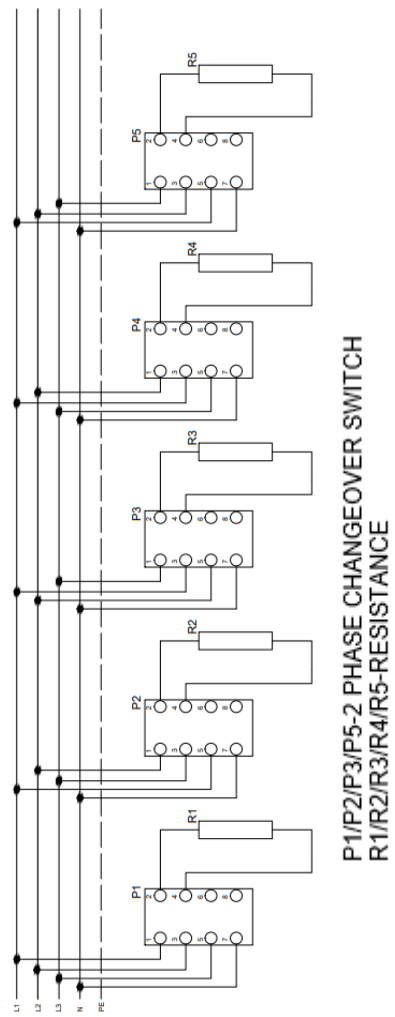


EMP.DN.171



# SHAWARMA MACHINES (ELECTRICAL)

## H ELECTRIC CIRCUIT SCHEMA



EMP.DN.172