



# ORANGE JUICER

## CONTENTS

---

<b>A</b>	<b>GENERAL INFORMATION .....</b>	<b>Page 2</b>
A1	PRODUCT DESCRIPTION .....	Page 3
A2	TECHNICAL INFORMATION .....	Page 3
A3	TRANSPORTATION .....	Page 4
A4	UNPACKING .....	Page 4
<b>B</b>	<b>INSTALLATION .....</b>	<b>Page 4</b>
<b>C</b>	<b>SAFETY INSTRUCTIONS .....</b>	<b>Page 5</b>
<b>D</b>	<b>OPERATION .....</b>	<b>Page 6</b>
<b>E</b>	<b>CLEANING &amp; MAINTENANCE .....</b>	<b>Page 7</b>
<b>F</b>	<b>TROUBLESHOOTING .....</b>	<b>Page 8</b>
<b>G</b>	<b>SPARE PART LIST- EXPLODING DRAWINGS .....</b>	<b>Page 9</b>
<b>H</b>	<b>ELECTRIC CIRCUIT SCHEMA .....</b>	<b>Page 13</b>

## A GENERAL INFORMATION

---

Before installing the appliance, read operation and maintenance instructions carefully. Wrong installation and part changing may damage the product or may cause injury on people. These are not in our company's responsibility to damage the appliance intentionally, negligence, detriments because of disobeying instructions and regulations, wrong connections. Unauthorized intervention to appliance invalidates the warranty.

1. This instruction manual should be kept in a safe place for future reference.
2. **Installation should be made in accordance with ordinances and security rules of that country by a qualified service personnel.**
3. This appliance has to be used by trained person.
4. Please turn off the appliance immediately in the event of malfunction or failure. The appliance should be repaired only by authorized service personnel. Please demand original spare part.

# ORANGE JUICER

## A1 PRODUCT DESCRIPTION

\*Professional Orange Juicers ,that provides high efficiency has been designed to be used in industrial kitchens.

Product Code	Dimensions (mm)	Weight (kg)	Packaging Dimensions (mm)
EMP.ORG.50-T	420x578x910	68	470x620x960
EMP.ORG.51-T	470x578x800	21	520x620x850
EMP.ORG.50-G	420x578x910	68	470x620x960
EMP.ORG.51-G	470x578x800	21	520x620x850

## A2 TECHNICAL INFORMATION

Product Code	Squeeze Capacity (piece/min)	Filling Capacity (kg-tour)	Reamer Motor Power (KW)	Operating Voltage (V)	Cable (mm <sup>2</sup> )	Fuse (A)
EMP.ORG.50-T	25	18	0,37	220-240	3x1,5	16
EMP.ORG.51-T	Lower stand					
EMP.ORG.50-G	25	18	0,37	220-240	3x1,5	16
EMP.ORG.51-G	Lower stand					

### **A3 TRANSPORTATION**

---

\*This appliance can not be moved by hand from area to area. It must be moved on pallet with forklift truck.

### **A4 UNPACKING**

---

\*Please unpack the package according to the security codes and ordinances of current country and get rid from the pack. Parts which contacts with food are produced by stainless steel. All plastic parts are marked by material's symbol.

\*Please check that all the parts of appliance had come completely and if they are damaged or not during the shipping.

### **B INSTALLATION**

---

\*Please place the product to straight and sturdy ground, please take necessary steps against possibility of overturn.

\*Technician who will serve for installation and service for the appliance must be professional on this subject and must have installation and service licenses by the company.

\*Connection to Electric Power Supply must be done by authorized person.

\*Please be sure that the voltage connected to appliance must be equal with the voltage which is on appliance's label.



This appliance must be connected to an earthed outlet in accordance with safety rules and standards.









\*Appliance's earthing must be connected to earthing line on panel which is nearest to electric installation.

\*Connection to the main fuse and leak current fuse must be done in accordance with the current regulations.

# ORANGE JUICER

## C SAFETY INSTRUCTIONS

---

-  \*Do not use the appliance in insufficient lighted place.
-  \*Do not touch the moving attachments while the appliance operates.
-  \*Do not install the appliance in the presence of flammable or explosive materials.
-  \*Do not operate the appliance when the machine is empty.
-  \*Do not load so less or more than appliance's capacity.
-  \*Do not attempt to use the appliance without suitable protective equipments.
-  \*Because of any reason if there is a fire or flame flare where the appliance is used, turn off all gas valves and electric contactor switch quickly and use fire extinguisher. Never use water to extinguish the fire.
-  \*All the damages because of not having earthing connection will not be on warranty.

## D OPERATION

---

### \*Control Panel;

A : ON / OFF



### \*Operating;

- Before operating the appliance, clean the outer surface, reamer balls and residue filter with moist cloth.
- In order to operate the appliance plug in.
- If you don't place the appliance's front safety guard, it is not operated due to having magnetic sensor.
- Before putting the oranges into the tank, clean the oranges and wait all water particles to be lost. Otherwise water may get into the tank launcher and may damage ball bearings and seals.
- There is 1 switch for launcher and boring balls on the side of the device. Press the switch to operate the device's boring balls.
- The launcher and reamer balls are going to start at switch on.
- Put oranges that have 60-85 mm diameter and pay attention not to overload the appliance,
- The orange juice will flow from voidance orifice.
- After the operation completed switch (0) position and unplug the appliance.

# ORANGE JUICER

## **E      CLEANING & MAINTENANCE**

---

### ➤ **CLEANING AND MAINTENANCE AFTER EVERY USE**

- Clean the residue filter under reamer balls after every use.
- Always turn off the appliance and disconnect from the power supply before cleaning.
- Clean the appliance's tank, residue filter and reamer balls with cleaning materials and rinse with water.
- Pay attention that the cleaning materials that are used to be hygienic.
- Do not use abrasive cleaning chemicals as these can leave harmful residues.
- Do not clean the appliance by spraying water directly, otherwise electric motor may get damaged.

### ➤ **PERIODIC CLEANING AND MAINTENANCE**

- Maintenance should be done by qualified person.
- Get the periodic maintenance of the appliance once in every 15 days.
- According to frequency of use, clean the reamer balls with boiling water 2 times in a week.
- Maintenance of the appliance's contactor should be done by compressed air according to frequency of use.
- Check the gear system. If necessary lubricate with the help of grease nipple.

**F TROUBLESHOOTING**

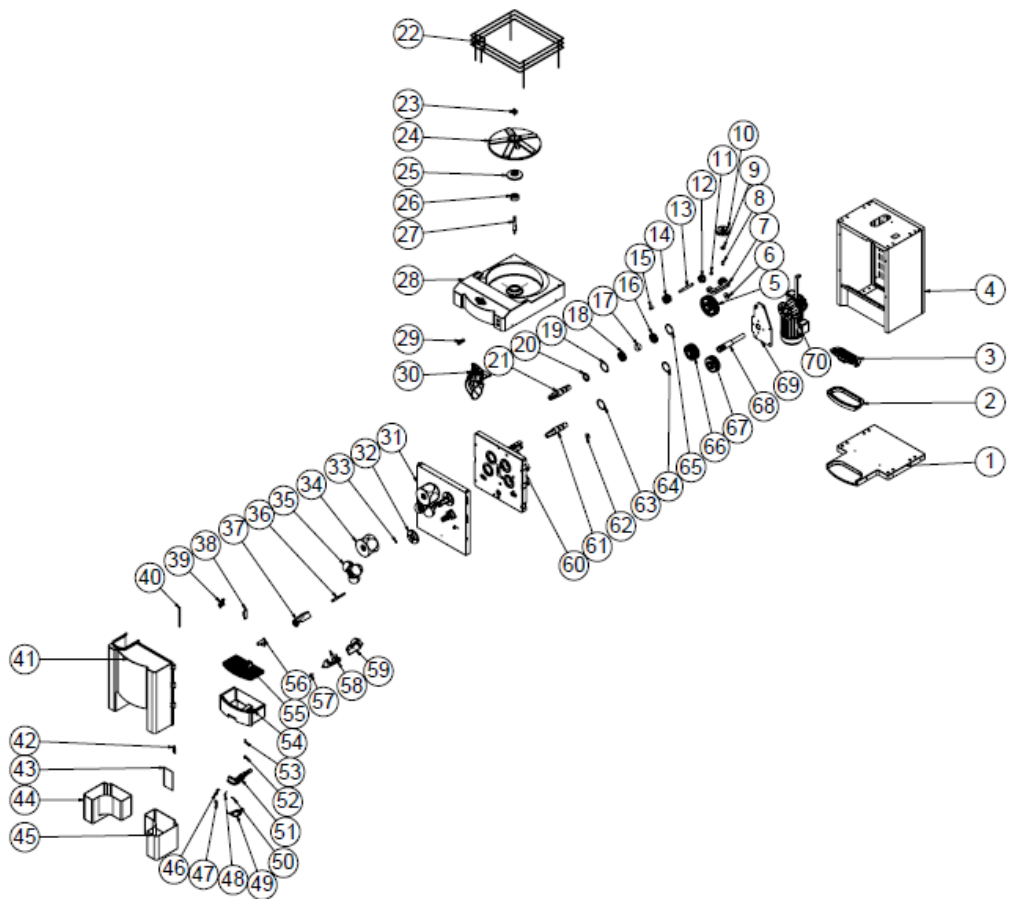
<b>THE APPLIANCE DOESN'T OPERATE</b>	<ol style="list-style-type: none"><li>1. Check if the appliance is plugged in.</li><li>2. Check the electrical connections and voltage.</li></ol>
<b>THE APPLIANCE IS NOISY</b>	<ol style="list-style-type: none"><li>1. Check the launcher.</li><li>2. If the motor is noisy, stop it and call authorized service.</li></ol>
<b>THE APPLIANCE STOPPED</b>	<ol style="list-style-type: none"><li>1. The appliance can stop due to low voltage. In this situation check the voltage.</li><li>2. Check if there are oranges accumulated on the way of cutting tank.</li></ol>
<ul style="list-style-type: none"><li>• If orange squeeze process is not done at suitable quality</li><li>• If any function of security doesn't work<ul style="list-style-type: none"><li>➤ Do not use the appliance.</li></ul></li></ul>	

**\*If these problems are still going on, contact with our authorized services.**



# ORANGE JUICER

## G SPARE PART LIST- EXPLODING DRAWINGS



EMP.ORG.50-G  
EMP.ORG.50-T

## G SPARE PART LIST- EXPLODING DRAWINGS

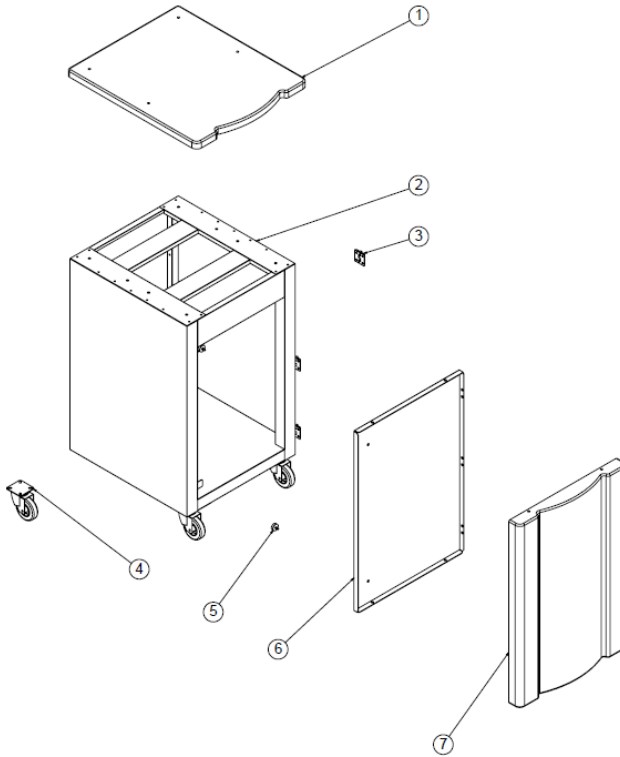
PRODUCT CODE : EMP.ORG.50-G – EMP.ORG.50-T		
NO	PRODUCT NAME	P.CODE
1	BASE PLASTIC	M.ENJ-ERS-PLS-ORG-012
2	BOTTOM WATER CONTAINER	M.ENJ-ERS-PLS-ORG-009
3	WATER CONTAINER FILTER	M.ENJ-ERS-PLS-ORG-011
4	CHASSIS	-
5	TRANSMISSION GEAR 3	YTL-ERS.ORG-KS-0007
6	GEAR CLAMPING SHEET	YSC-ERS.ORG-LZ-0010
7	UPPER GEAR PART	YMH-ERS.ORG-CN-0002
8	CONNECTION BUSH	YTL-ERS.ORG-KS-0014
9	BEARING ( 6000 ZC3 )	M.RLM-NRM-032
10	TRANSMISSION GEAR 5	YTL-ERS.ORG-KS-0012
11	CONNECTION BUSH	YTL-ERS.ORG-KS-0015
12	TRANSMISSION GEAR 6	YTL-ERS.ORG-KS-0013
13	UPPER GROUP SHAFT	YTL-ERS.ORG-KS-0011
14	TRANSMISSION GEAR 4	YTL-ERS.ORG-KS-0008
15	CONNECTION BUSH	YTL-ERS.ORG-KS-0016
16	BEARING ( 6007 ZZ )	M.RLM-NRM-025
17	INTERMEDIATE PIPE	YBR-ERS.ORG-KS-0001
18	BEARING ( 6203 ZZ )	M.RLM-NRM-010
19	RING 472-62	B-SEG-SYH-004
20	FELT 40*52*7	M.CNT-KCE-048
21	ORANGE JUMPING SPINDLE	YTL-ERS.ORG-KS-0001
22	TOP TABLE WIRE	ARA-ERS.ORG-0001
23	ORANGE SCREW SCREW	M.ENJ-ERS-PLS-ORG-020
24	UPPER DRUM	M.ENJ-ERS-PLS-ORG-010
25	DRUM PLASTIC	M.ENJ-ERS-PLS-ORG-021
26	DRUM BUSHING	YTL-ERS.ORG-KS-0009
27	TRANSMISSION UPPER SHAFT	YTL-ERS.ORG-KS-0010
28	TOP PLASTIC	M.ENJ-ERS-PLS-ORG-031
29	GREEN BUTTON (PERMANENT)	M.ELK-SLT-BTL-009
30	ORANGE TRANSFER PATH	ERS.M.MUH-116
31	FRONT BODY SHEET	YSC-ERS.ORG-LZ-0009
32	ORANGE JUMP FRONT PLASTIC	M.ENJ-ERS-PLS-ORG-018
33	SCREW SEAL	M.CNT-ERS-040
34	ORANGE SQUARE PLASTIC	M.ENJ-ERS-PLS-ORG-014



# ORANGE JUICER

35	TOP PLASTIC	M.ENJ-ERS-PLS-ORG-015
36	BLADE CONNECTION SHAFT	YTL-ERS.ORG-KS-0003
37	KNIFE	YMH-ERS.ORG-FSM-0004
38	LOCK BOTTOM PLASTIC	M.ENJ-ERS-PLS-ORG-025
39	LOCK TOP PLASTIC	M.ENJ-ERS-PLS-ORG-024
40	COVER GASKET	M.CNT-ERS-039
41	FRONT COVER PLASTIC	M.ENJ-ERS-PLS-ORG-002
42	COVER HINGE PLASTIC	M.ENJ-ERS-PLS-ORG-022
43	BACK PLASTIC	M.ENJ-ERS-PLS-ORG-005
44	WASTE CONTAINER RIGHT PLASTIC	M.ENJ-ERS-PLS-ORG-032
45	WASTE CONTAINER LEFT PLASTIC	M.ENJ-ERS-PLS-ORG-033
46	TAP PLASTIC 3	M.ENJ-ERS-PLS-ORG-029
47	PLASTIC GASKET	M.ENJ-ERS-PLS-ORG-035
48	TAP SPRING	M.YAY-ERS-052
49	TAP PLASTIC 2	M.ENJ-ERS-PLS-ORG-028
50	TAP PIN	YTL-ERS.ORG-KS-0017
51	TAP PLASTIC 1	M.ENJ-ERS-PLS-ORG-027
52	TAP PLASTIC 4	M.ENJ-ERS-PLS-ORG-030
53	GASKET SPRING	M.YAY-ERS-051
54	DRAWER PLASTIC	M.ENJ-ERS-PLS-ORG-003
55	FILTER PLASTIC	M.ENJ-ERS-PLS-ORG-004
56	INTERMEDIATE CONNECTION PLASTIC	M.ENJ-ERS-PLS-ORG-023
57	SCRAPER CONNECTION PLASTIC	M.ENJ-ERS-PLS-ORG-019
58	SCRAPER RIGHT PLASTIC	M.ENJ-ERS-PLS-ORG-016
59	SCRAPER RIGHT PLASTIC	M.ENJ-ERS-PLS-ORG-017
60	BODY	YMH-ERS.ORG-CN-0001
61	ORANGE Squeezing Ball Spindle	YTL-ERS.ORG-KS-0002
62	GASKET	M.CNT-ERS-036
63	RING 472-40	B-SEG-SYH-009
64	RING 6799/02.3	B-SEG-SYH-032
65	RING 472-25	B-SEG-SYH-033
66	TRANSMISSION GEAR 2	YTL-ERS.ORG-KS-0006
67	TRANSMISSION GEAR 1	YTL-ERS.ORG-KS-0005
68	REDUCER GEAR SHAFT	YTL-ERS.ORG-KS-0004
69	REDUCER CONNECTION SHEET	YSC-ERS.ORG-LZ-0008
70	ENGINE (ENGINE)	M.ELK-MTR-RLM-031

## G SPARE PART LIST- EXPLODING DRAWINGS



**EMP.ORG.51-G**  
**EMP.ORG.51-T**

PRODUCT CODE : EMP.ORG.51-T – EMP.ORG.51-G		
NO	PRODUCT NAME	P.CODE
1	BOTTOM STAND TOP PLASTIC	M.ENJ-ERS-PLS-ORG-013
2	CHASSIS	-
3	HINGE	M.AKS-MNT-ALM-003
4	WHEEL WITHOUT BRAKE	ERS.M.AKS-TKR-PS-001
5	MAGNET	M.MIK-ERS-008
6	COVER INTERNAL SHEET	YSC-ERS.ORG-LZ-0001
7	COVER PLASTIC	M.ENJ-ERS-PLS-ORG-008

# ORANGE JUICER

## H ELECTRIC CIRCUIT SCHEMA

---

