



# WAFFEL MAKER

## CONTENTS

---

<b>A</b>	<b>GENERAL INFORMATION.....</b>	<b>Page 2</b>
A1	PRODUCT DESCRIPTION .....	Page 3
A2	TECHNICAL INFORMATION .....	Page 3
A3	TRANSPORTATION .....	Page 4
A4	UNPACKING .....	Page 4
<b>B</b>	<b>INSTALLATION.....</b>	<b>Page 4</b>
<b>C</b>	<b>SAFETY INSTRUCTIONS .....</b>	<b>Page 5</b>
<b>D</b>	<b>OPERATION .....</b>	<b>Page 6</b>
<b>E</b>	<b>CLEANING &amp; MAINTENANCE.....</b>	<b>Page 7</b>
<b>F</b>	<b>TROUBLESHOOTING .....</b>	<b>Page 8</b>
<b>G</b>	<b>SPARE PART LIST- EXPLODING DRAWING .....</b>	<b>Page 9</b>
<b>H</b>	<b>ELECTRIC CIRCUIT SCHEMA.....</b>	<b>Page 13</b>

## A GENERAL INFORMATION

---

**Before installing the appliance, read operation and maintenance instructions carefully. Wrong installation and part changing may damage the product or may cause injury on people. These are not in our company's responsibility to damage the appliance intentionally, negligence, detriments because of disobeying instructions and regulations, wrong connections. Unauthorized intervention to appliance invalidates the warranty.**

1. This instruction manual should be kept in a safe place for future reference.
- 2. Installation should be made in accordance with ordinances and security rules of that country by a qualified service personnel.**
3. This appliance has to be used by trained person.
4. Please turn off the appliance immediately in the event of malfunction or failure. The appliance should be repaired only by authorized service personnel. Please demand original spare part.

# WAFFEL MAKER

## A1 PRODUCT DESCRIPTION

---

\*The Professional Waffel Maker ,that provides high efficiency has been designed to be used in industrial kitchens.

Product Code	Dimensions (mm)	Weight (kg)	Packaging Dimensions (mm)
<b>EMP.WF.010</b>	300x320x300	31	360x460x360
<b>EMP.WF.020</b>	600x320x300	63	660x460x360

## A2 TECHNICAL INFORMATION

---

Product Code	Capacity (cm)	Model	Power (KW)	Operating Voltage (V)	Cable (mm <sup>2</sup> )	Fuse (A)
<b>EMP.WF.010</b>	4x6x23,3x2,6	SINGLE	2,2	230	3x2,5	10
<b>EMP.WF.020</b>	2x(4x6x23,3x2,6)	DOUBLE	2x(2,2)	230	3x2,5	20

### **A3 TRANSPORTATION**

---

\*This appliance can be moved by hand from area to area. Do not crash and drop the appliance while transporting.

### **A4 UNPACKING**

---

\*Please unpack the package according to the security codes and ordinances of current country and get rid from the pack. Parts which contacts with food are produced by stainless steel. All plastic parts are marked by material's symbol.

\*Please check that all the parts of appliance had come completely and if they are damaged or not during the shipping.

### **B INSTALLATION**

---

\*Please place the product to straight and sturdy ground, please take necessary steps against possibility of overturn.

\*Technician who will serve for installation and service for the appliance must be professional on this subject and must have installation and service licenses by the company.

\*Connection to Electric Power Supply must be done by authorized person.

\*Please be sure that the voltage connected to appliance must be equal with the voltage which is on appliance's label.



This appliance must be connected to an earthed outlet in accordance with safety rules and standards.










\*Appliance's earthing must be connected to earthing line on panel which is nearest to electric installation.

\*Connection to the main fuse and leak current fuse must be done in accordance with the current regulations.

# WAFFEL MAKER

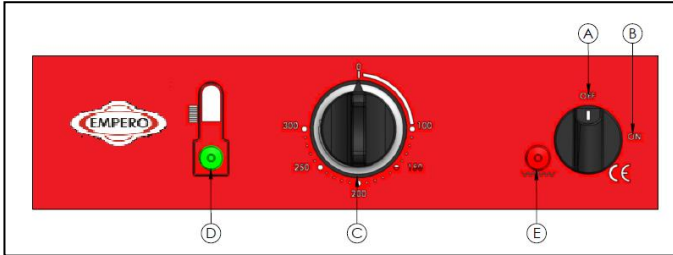
## C SAFETY INSTRUCTIONS

---

-  \*Do not use the appliance in insufficient lighted place.
-  \*Do not touch the moving attachments while the appliance operates.
-  \*Do not install the appliance in the presence of flammable or explosive materials.
-  \*Do not operate the appliance when the machine is empty.
-  \*Do not load so less or more than appliance's capacity.
-  \*Do not attempt to use the appliance without suitable protective equipments.
-  \*Because of any reason if there is a fire or flame flare where the appliance is used, turn off all gas valves and electric contactor switch quickly and use fire extinguisher. Never use water to extinguish the fire.
-  \*All the damages because of not having earthing connection will not be on warranty.
-  \*Do not place the appliance on carpet, table cloth etc. that can be burnt easily.

## D OPERATION

### \*Control Panel ;



- A** : OFF position
- B** : ON position
- C** : Thermostat
- D** : Indicator lamp
- E** ; Signal lamp

### \*Operating ;

- Before operating the appliance, clean cooking surfaces and body with a moist cloth.
- Plug in the appliance and switch on.
- There may be a smell due to heater component and isolation material when the appliance is operated for the first time. Therefore before operating the appliance set all thermostats to 250 °C and operate it for 45 min. when it is empty.
- Set automatic thermostats to desired cooking temperature. When the temperature reaches cooking degree, thermostat lights will be off.
- Pour the ready waffle mix to the heated surface and cook the waffle by closing upper lid.
- When the appliance reaches 300°C, cooking process will happen between 1-3 min. according to type of process.
- With the feature of unattached double thermostats, the lids can be used at different heat at WF.20.
- In order to turn off the appliance, switch off and switch the thermostats to (0) position.

# WAFFEL MAKER

## **E      CLEANING & MAINTENANCE**

---

### ➤ **CLEANING AND MAINTENANCE AFTER EVERY USE**

- Clean the cooking surfaces with dry paper towel or soft moist cloth after every use.
- Always turn off the appliance and disconnect from the power supply before cleaning.
- Do not use abrasive cleaning chemicals as these can leave harmful residues.
- Do not clean the cooking surface with a material that may damage.
- Do not clean the appliance by spraying water directly, otherwise electric motor may get damaged.

### ➤ **PERIODIC CLEANING AND MAINTENANCE**

- Maintenance should be done by qualified person.
- Get the periodic maintenance of the appliance once in every 15 days.
- Check the power cable sometimes if it is damaged or not. If there is damage, do not operate the appliance absolutely. Provide cable change to be done by service or technician.

**F TROUBLESHOOTING**

---

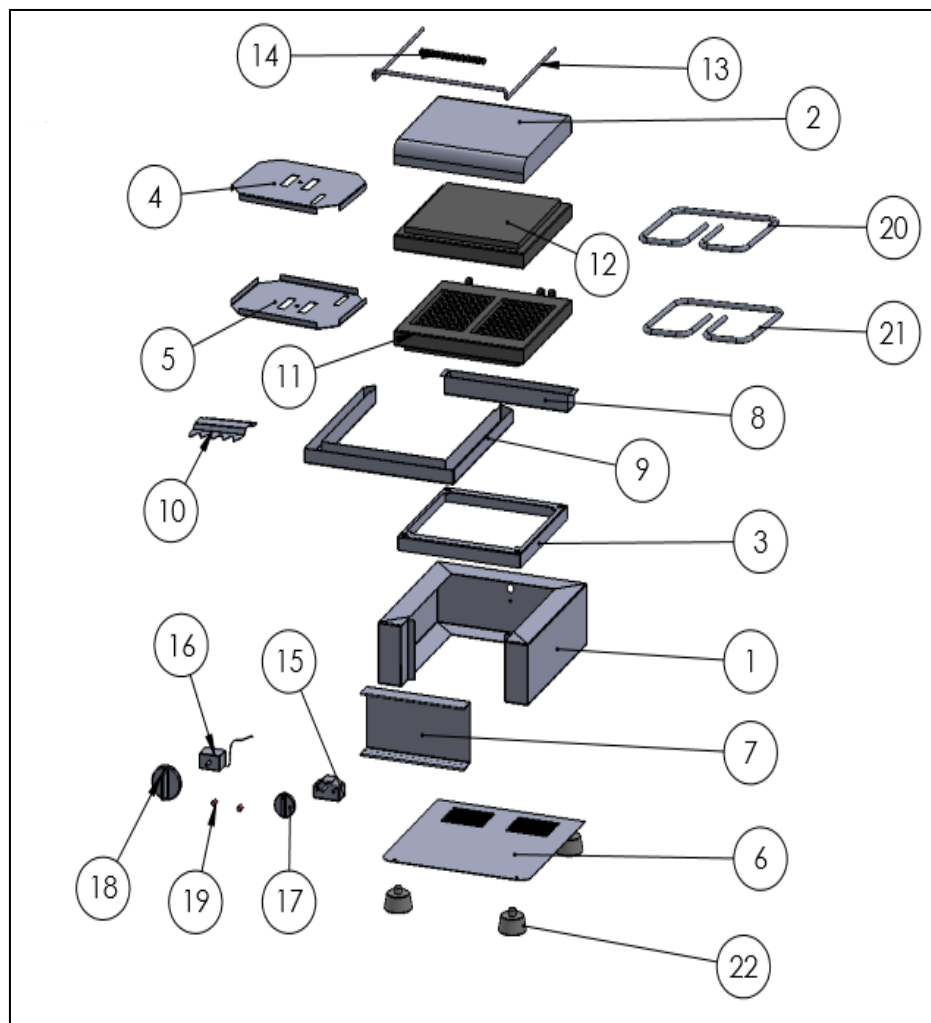
<b>THE APPLIANCE DOESN'T OPERATE</b>	<ol style="list-style-type: none"><li>1. Check if the appliance is plugged in.</li><li>2. Check the electrical connections and voltage.</li></ol>
<b>THE APPLIANCE STOPPED</b>	<ol style="list-style-type: none"><li>1. The appliance can stop due to low voltage. In this situation check the voltage.</li></ol>
<b>THE APPLIANCE IS NOT HEATED</b>	<ol style="list-style-type: none"><li>1. Check the appliance's resistances.</li><li>2. Check the thermostat switch.</li></ol>
<ul style="list-style-type: none"><li>• If waffel making is not done at suitable quality</li><li>• If any function of security doesn't work<ul style="list-style-type: none"><li>➤ Do not use the appliance.</li></ul></li></ul>	

**\*If these problems are still going on, contact with our authorized services.**



# WAFFEL MAKER

## G SPARE PART LIST-EXPLODING DRAWING



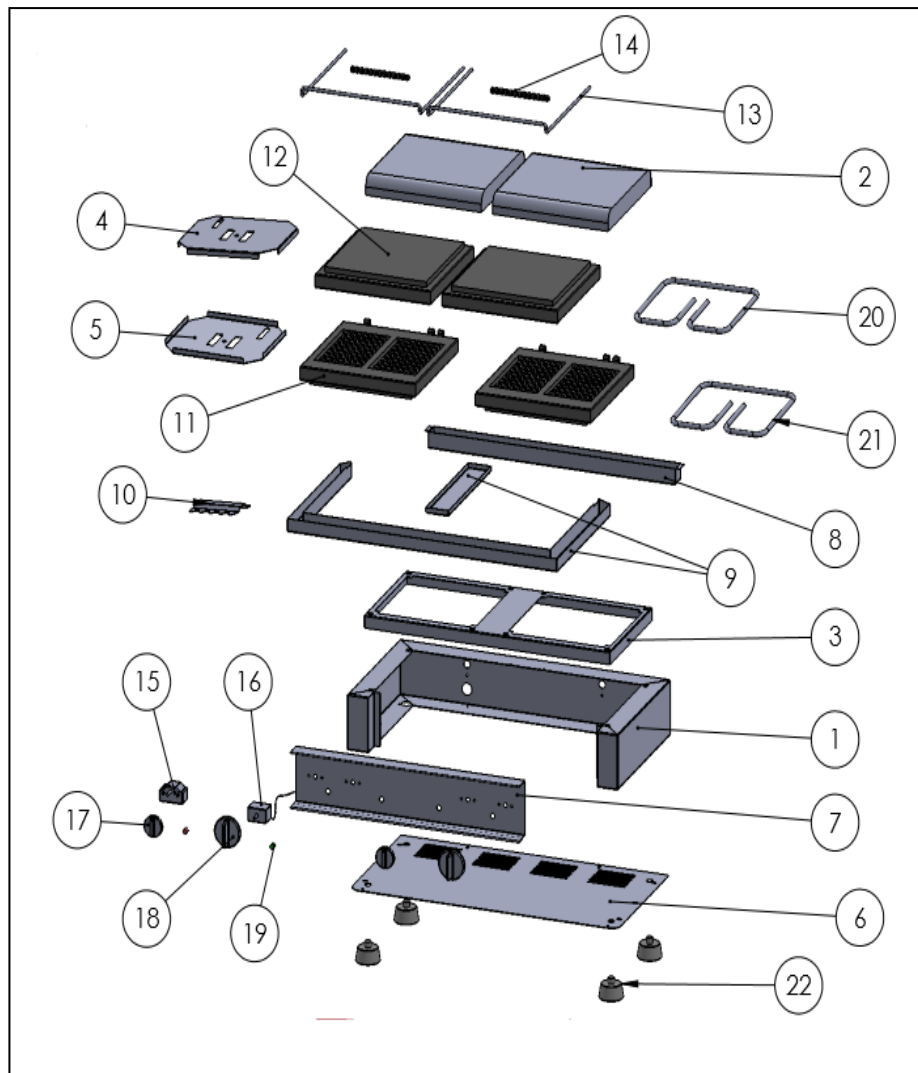
EMP.WF.010

**G SPARE PART LIST-EXPLODING DRAWING**

<b>PRODUCT CODE:EMP.WF.010</b>		
<b>NO</b>	<b>PRODUCT NAME</b>	<b>P.CODE</b>
1	BASE FRAME	Y.EMP.WF.010.001
2	TOP LID	Y.EMP.WF.010.002
3	INNER FRAME	Y.EMP.WF.010.003
4	RESISTANCE HOLDER (TOP)	Y.EMP.WF.010.004
5	RESISTANCE HOLDER (BOTTOM)	Y.EMP.WF.010.005
6	AIR CONDITIONING GRILL-BOTTOM	Y.EMP.WF.010.006
7	CONTROL PANEL	Y.EMP.WF.010.007
8	DOUGH FLOWINGDIVISION (BACK)	Y.EMP.WF.010.008
9	DOUGH FLOWINGDIVISION	Y.EMP.WF.010.009
10	ISPATULA	Y.EMP.WF.010.010
11	BOTTOM CASTING	Y.EMP.WF.010.011
12	TOP CASTING	Y.EMP.WF.010.012
13	LID HANDLE	Y.EMP.WF.010.013
14	LID HANDLE	Y.EMP.WF.010.014
15	SWITCH	Y.EMP.WF.010.015
16	THERMOSTAT	Y.EMP.WF.010.016
17	SWITCH BUTTON	Y.EMP.WF.010.017
18	THERMOSTAT BUTTON	Y.EMP.WF.010.018
19	LED	Y.EMP.WF.010.019
20	TOP RESISTANCE	Y.EMP.WF.010.020
21	BOTTOM RESISITANCE	Y.EMP.WF.010.021
22	FEET	Y.EMP.WF.010.022

# WAFFEL MAKER

## G SPARE PART LIST-EXPLODING DRAWING



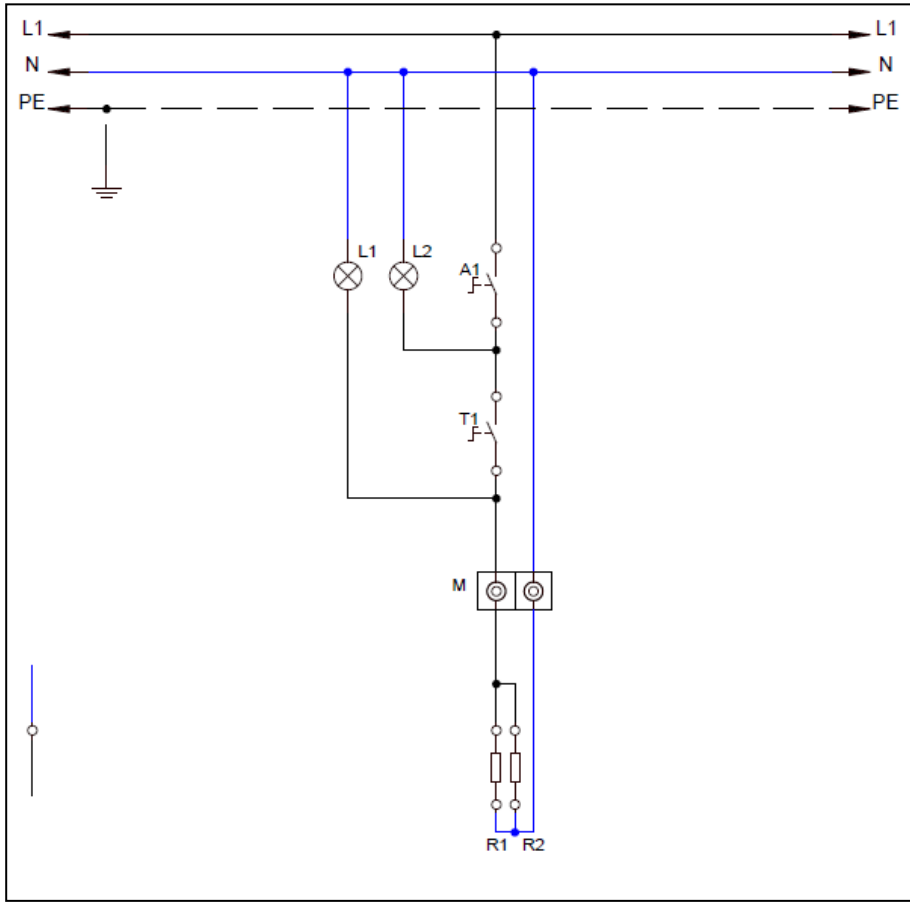
EMP.WF.020

**G SPARE PART LIST-EXPLODING DRAWING**

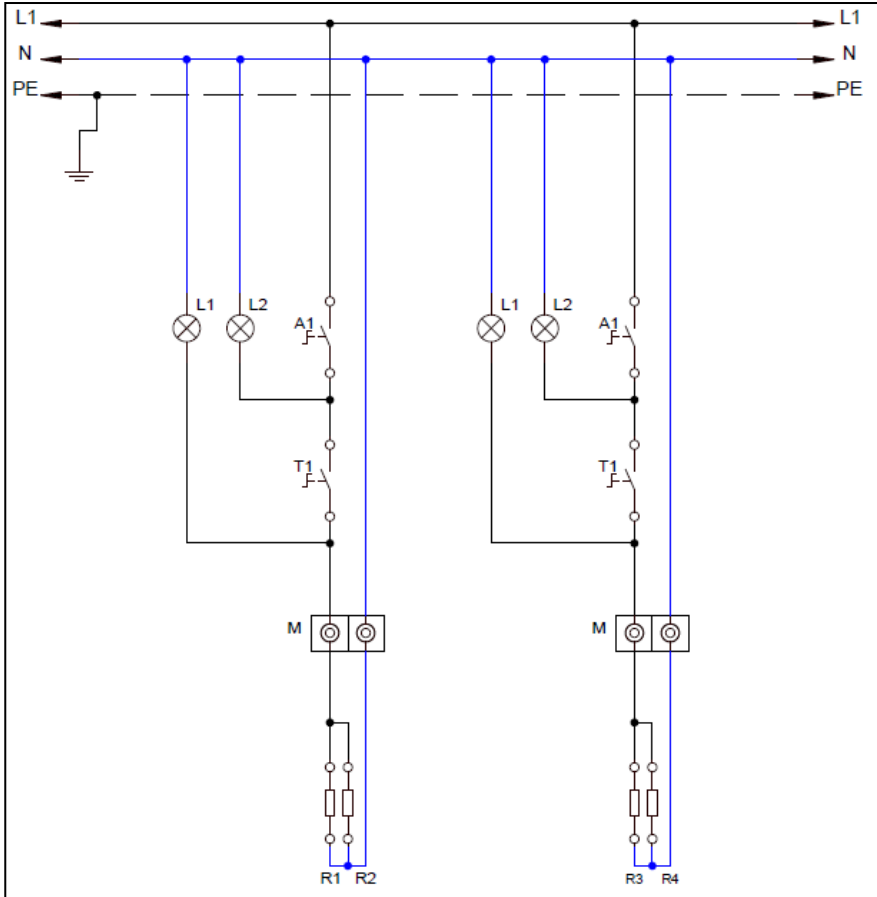
<b>PRODUCT CODE:EMP.WF.020</b>		
<b>NO</b>	<b>PRODUCT NAME</b>	<b>P.CODE</b>
1	BASE FRAME	Y.EMP.WF.020.001
2	TOP LID	Y.EMP.WF.020.002
3	INNER FRAME	Y.EMP.WF.020.003
4	RESISTANCE HOLDER (TOP)	Y.EMP.WF.020.004
5	RESISTANCE HOLDER (BOTTOM)	Y.EMP.WF.020.005
6	AIR CONDITIONING GRILL-BOTTOM	Y.EMP.WF.020.006
7	CONTROL PANEL	Y.EMP.WF.020.007
8	DOUGH FLOWINGDIVISION (BACK)	Y.EMP.WF.020.008
9	DOUGH FLOWINGDIVISION	Y.EMP.WF.020.009
10	ISPATULA	Y.EMP.WF.020.010
11	BOTTOM CASTING	Y.EMP.WF.020.011
12	TOP CASTING	Y.EMP.WF.020.012
13	LID HANDLE	Y.EMP.WF.020.013
14	LID HANDLE	Y.EMP.WF.020.014
15	SWITCH	Y.EMP.WF.020.015
16	THERMOSTAT	Y.EMP.WF.020.016
17	SWITCH BUTTON	Y.EMP.WF.020.017
18	THERMOSTAT BUTTON	Y.EMP.WF.020.018
19	LED	Y.EMP.WF.020.019
20	TOP RESISTANCE	Y.EMP.WF.020.020
21	BOTTOM RESISITANCE	Y.EMP.WF.020.021
22	FEET	Y.EMP.WF.020.022

# WAFFEL MAKER

## H ELECTRIC CIRCUIT SCHEMA



L2	M	A1	T1	R1	R2	L1
Key Open Lamp	Porcelain Connector	ON/OFF Switch	Thermostat (50-300°C)	Lower Resistance 1100W	Upper Resistance 1100W	Thermostat Open Lamp

**H ELECTRIC CIRCUIT SCHEMA**


L2	M	A1	T1	R1	R2	L1
Key Open Lamp	Porcelain Connector	ON/OFF Switch	Thermostat (50-300°C)	Lower Resistance 1100W	Upper Resistance 1100W	Thermostat Open Lamp