

# PLANETARY MIXERS ( SPEED CONTROL )

## CONTENTS

---

<b>A</b>	<b>GENERAL INFORMATION .....</b>	<b>Page 2</b>
A1	PRODUCT DESCRIPTION .....	Page 3
A2	TECHNICAL INFORMATION .....	Page 3
A3	TRANSPORTATION .....	Page 4
A4	UNPACKING .....	Page 4
<b>B</b>	<b>INSTALLATION .....</b>	<b>Page 4</b>
<b>C</b>	<b>SAFETY INSTRUCTIONS .....</b>	<b>Page 5</b>
<b>D</b>	<b>OPERATION .....</b>	<b>Page 6</b>
<b>E</b>	<b>CLEANING &amp; MAINTENANCE .....</b>	<b>Page 7</b>
<b>F</b>	<b>TROUBLESHOOTING .....</b>	<b>Page 8</b>
<b>G</b>	<b>SPARE PART LIST- EXPLODING DRAWING .....</b>	<b>Page 9</b>
<b>H</b>	<b>ELECTRIC CIRCUIT SCHEMA .....</b>	<b>Page 20</b>

## A GENERAL INFORMATION

---

Before installing the appliance, read operation and maintenance instructions carefully. Wrong installation and part changing may damage the product or may cause injury on people. These are not in our company's responsibility to damage the appliance intentionally, negligence, detriments because of disobeying instructions and regulations, wrong connections. Unauthorized intervention to appliance invalidates the warranty.

1. This instruction manual should be kept in a safe place for future reference.
2. **Installation should be made in accordance with ordinances and security rules of that country by a qualified service personnel.**
3. This appliance has to be used by trained person.
4. Please turn off the appliance immediately in the event of malfunction or failure. The appliance should be repaired only by authorized service personnel. Please demand original spare part.

# PLANETARY MIXERS ( SPEED CONTROL )

## A1 PRODUCT DESCRIPTION

\*The Professional Planetary Mixer, that provides high efficiency has been designed to be used in industrial kitchens.

Product Code	Dimensions (mm)	Weight (kg)	Packaging Dimensions (mm)
<b>MK.07</b>	680x860x1380	183	740x880x1370
<b>MK.03</b>	680x880x1400	194	740x920x1410
<b>MK.05</b>	680x905x1425	198	750x940x1430
<b>EMP.10</b>	410x535x720	55	490x580x740

## A2 TECHNICAL INFORMATION

Product Code	Bowl Dimensions (mm)	Bowl Capacity (for flour) (kg)	Bowl Capacity (lt)	Power (Kw)	Operating Voltage (V)	Cable (mm <sup>2</sup> )
<b>MK.07</b>	360x360	4	30	1,5	220	3x1,5
<b>MK.03</b>	400x390	5	40	2,2	220	3x1,5
<b>MK.05</b>	430x445	6	60	2,2	220	3x1,5
<b>EMP.10</b>	260x260	2	10	0,55	220	3x1,5

## PLANETARY MIXERS ( SPEED CONTROL )

### **A3      TRANSPORTATION**

---

\*This appliance can not be moved by hand from area to area.It must be moved on pallet with forklift truck.

### **A4      UNPACKING**

---

\*Please unpack the package according to the security codes and ordinances of current country and get rid from the pack.Parts which contacts with food are produced by stainless steel.All plastic parts are marked by material's symbol.

\*Please check that all the parts of appliance had come completely and if they are damaged or not during the shipping.

### **B        INSTALLATION**

---

\*Please place the product to straight and sturdy ground,please take necessary steps against possibility of overturn.

\*Technician who will serve for installation and service for the appliance must be professional on this subject and must have installation and service licenses by the company.

\*Connection to Electric Power Supply must be done by authorized person.

\*Please be sure that the voltage connected to appliance must be equal with the voltage which is on appliance's label.



This appliance must be connected to an earthed outlet in accordance with safety rules and standards.










\*Appliance's earthing must be connected to earthing line on panel which is nearest to electric installation.

\*Connection to the main fuse and leak current fuse must be done in accordance with the current regulations.

## PLANETARY MIXERS ( SPEED CONTROL )

### C SAFETY INSTRUCTIONS

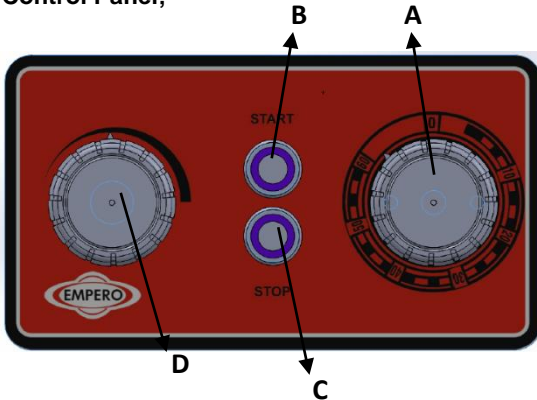
---

-  \*Do not use the appliance in insufficient lighted place.
-  \*Do not touch the moving attachments while the appliance operates.
-  \*Do not install the appliance in the presence of flammable or explosive materials.
-  \*Do not operate the appliance when the machine is empty.
-  \*Do not load so less or more than appliance's capacity .
-  \*Do not attempt to use the appliance without suitable protective equipments.
-  \*Because of any reason if there is a fire or flame flare where the appliance is used,turn off all gas valves and electric contactor switch quickly and use fire extinguisher .Never use water to extinguish the fire.
-  \*All the damages because of not having earthing connection will not be on warranty.
-  \*Do not place your hand into the bowl while the appliance is operating.Otherwise mixer may damage you seriously.

## PLANETARY MIXERS ( SPEED CONTROL )

### D OPERATION

#### \*Control Panel;



- A : Timer setting
- B : Start
- C : Stop
- D : Speed Setting

#### \*Operating;

- Before operating, clean the bowl with a wet cloth and dry.
- Insert the desired attachment, push up to the right and lock it into the place.
- Lift the bowl using handle and adjust the distance between the bowl and attachment.
- Use this appliance for mixing (egg, oil, cream etc.).
- Press start button to begin mixing.
- To adjust the speed of the mixer 3, set (D) to the desired level.
- Select the operating time of the mixer from the time options (turn left-right).
- Turn off the timer to operate the appliance pressing stop button.
- Lower the bowl, open the handle guard, take off attachments, take the bowl and take it off.
- After the operation completed, unplug the power supply.

## PLANETARY MIXERS ( SPEED CONTROL )

### **E      CLEANING & MAINTENANCE**

---

#### ➤ **CLEANING AND MAINTENANCE AFTER EVERY USE**

- Clean all mixer attachments after every mixing and kneading process. Otherwise the remains in these parts may make appliance's operating difficult.
- Always turn off the appliance and disconnect from the power supply before cleaning.
- Clean outer surface of appliance ,mixer and bowl with hot water and then dry.
- Do not use abrasive cleaning chemicals as these can leave harmful residues.
- Do not clean the appliance by spraying water directly, otherwise electric motor may get damaged.

#### ➤ **PERIODIC CLEANING AND MAINTENANCE**

- Get the periodic maintenance of the appliance once in every 15 days.
- Maintenance should be done by qualified person.
- The mixers require low maintenance (Motor and ball bearings are lubricated).
- Check the appliance's motor and tension of belt.
- Maintenance of the appliance's contactor should be done by compressed air according to frequency of use.



## PLANETARY MIXERS ( SPEED CONTROL )

### F TROUBLESHOOTING

<b>THE APPLIANCE DOESN'T OPERATE</b>	<ol style="list-style-type: none"><li>1. Check if the appliance is plugged in.</li><li>2. Check the electrical connections and voltage.</li><li>3. Pull handle and bowl up.</li><li>4. Check the position of safety guard.</li></ol>
--------------------------------------	--

<b>THE APPLIANCE IS NOISY</b>	<ol style="list-style-type: none"><li>1. Check the distance between bowl and attachment and adjust them. The attachment should not touch the bowl.</li><li>2. If the motor is noisy, stop it and call authorized service.</li></ol>
-------------------------------	---

<b>THE APPLIANCE STOPPED</b>	<ol style="list-style-type: none"><li>1. The appliance can stop due to low voltage. In this situation check the voltage.</li><li>2. The appliance may stop when it is overloaded. In this situation allow the motor to cool by taking off some materials from bowl.</li></ol>
------------------------------	---

<b>ERROR MESSAGE</b>	<p><b>Err.</b> : Inverter reset <b>E1:</b> Motor error <b>E3:</b> Switch and sensor failure. <b>E.OC1:</b> Overcurrent trip during acceleration <b>E.OC2:</b> Overcurrent trip during constant speed <b>E.OC3:</b> Overcurrent trip during deceleration or stop</p>
----------------------	---

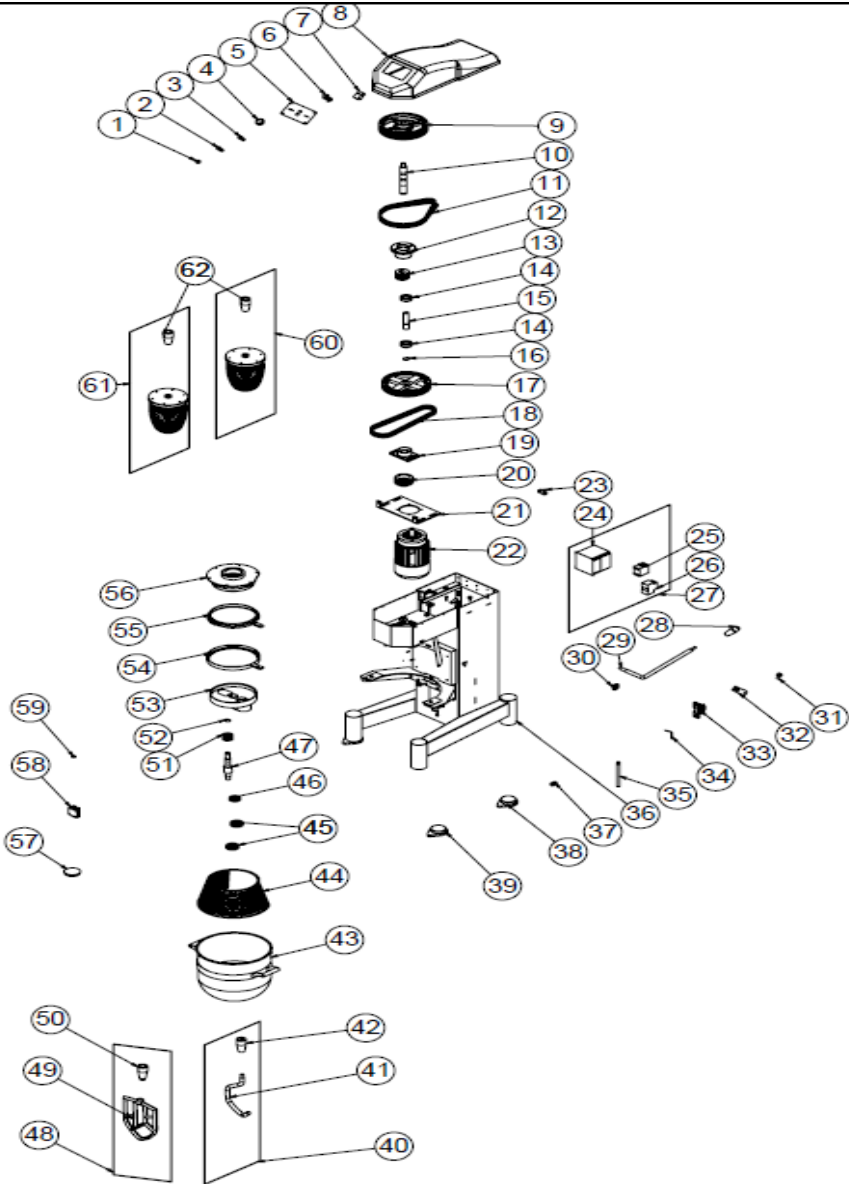
<ul style="list-style-type: none"><li>• If mixing with mixer is not done at suitable quality</li><li>• If any function of security doesn't work<ul style="list-style-type: none"><li>➤ Do not use the appliance.</li></ul></li></ul>
--

**\*If these problems are still going on, contact with our authorized service.**



# PLANETARY MIXERS ( SPEED CONTROL )

## G SPARE PART LIST-EXPLODING DRAWING



# PLANETARY MIXERS ( SPEED CONTROL )

## G SPARE PART LIST-EXPLODING DRAWING

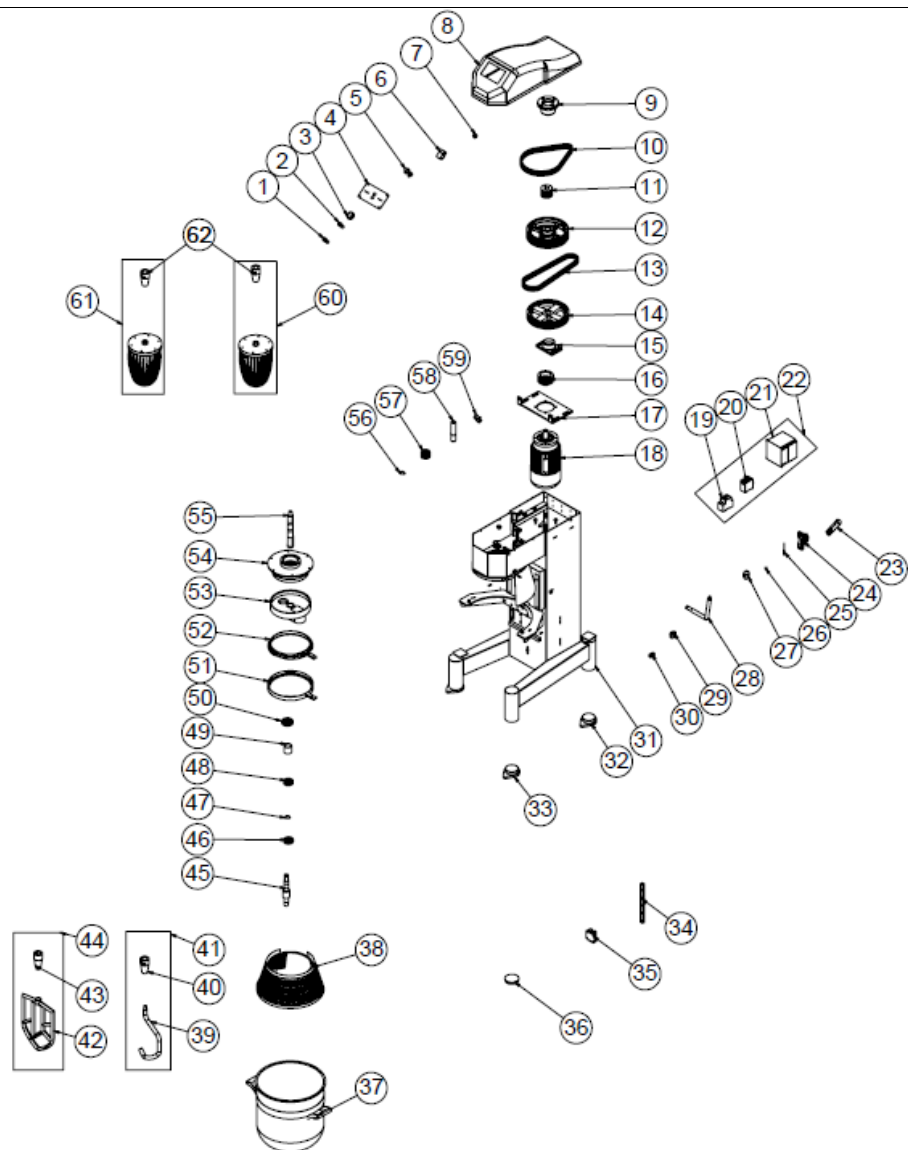
PRODUCT CODE : MK.03		
NO	PRODUCT NAME	P.CODE
1	BUTTON SOCKET	M.AKS-DGM-MUH-009
2	GREEN LIGHTED BUTTON	ERS.M.ELK-SLT-BTL-011
3	RED BUTTON (MOMENTARY)	M.ELK-SLT-BTL-010
4	BUTTON	M.ENJ-ERS-PLS-PS-018
5	PANEL SHEET	YSC-ERS.SH-LZ-0074
6	POTENTIOMETER	M.ELK-PMT-4,7
7	TIME CLOCK	M.ELK-MEK-MTM-004
8	TOP COVER	M.ENJ-ERS-PLS-MK-003
9	TRANSMISSION PULLEY	YDK-ERS.MK-CN-0037
10	TRANSMISSION SHAFT	YTL-ERS.MK-KS-0056
11	STRAP (9.5*1000)	M.KYS-VKY-009
12	TRANSMISSION SLEEVE	YDK-ERS.MK-CN-0042
13	SLEEVE LOWER PULLEY	YDK-ERS.MK-CN-0035
14	BEARING (630374 ZZ )	M.RLM-NRM-020
15	SLEEVE SHAFT	YTL-ERS.MK-KS-0024
16	RING 471-30	B-SEG-SYH-016
17	SLEEVE UPPER PULLEY	YDK-ERS.MK-CN-0036
18	STRAP (9.5*900)	M.KYS-VKY-038
19	TENSION SLEEVE	YDK-ERS.MK-CN-0016
20	ENGINE PULLEY	YDK-ERS.MK-CN-0022
21	ENGINE PLATE	YSC-ERS.MK-LZ-0103
22	ELECTRIC MOTOR	M.ELK-MTR-RSM-007
23	SWITCH	M.ELK-SWC-ERS-004
24	SPEED CONTROLLER	M.ELK-SRC-003
25	CONTACTOR LC1D09M7	ERS.M.ELK-KNT-KNT-027
26	GZ1AN11 CONTACTOR	ERS.M.ELK-KNT-KNT-029
27	PANEL GROUP	M.ELK-PNO-MK-002
28	HANDLE	ERS.M.AKS-KLP-BKL-010
29	STEERING HANDLE	YTL-ERS.MK-KS-0059

## PLANETARY MIXERS ( SPEED CONTROL )

30	STEERING HANDLE	YTL-ERS.MK-KS-0066
31	BALL CONNECTION	M.MUH-049
32	LIFTING ARM	YTL-ERS.MK-KS-0075
33	BEARING ( UCFL 204G )	M.RLM-YTK-002
34	MAGNETIC SENSOR	M.ELK-SWC-KTG-001
35	SHOCK ABSORBER	M.MUH-052
36	CHASSIS	-
37	PG-13,5 CABLE FITTING	M.ELK-RKR-PLS-007
38	FOOT BOTTOM RUBBER	M.ENJ-ERS-LST-042
39	PLASTIC FOOT	M.ENJ-ERS-LST-044
40	MIXING APPARATUS	ARA-ERS.MK-0004
41	MIXING ELEMENT	YTL-ERS.MK-KS-0057
42	MIXING ELEMENT	YTL-ERS.MK-KS-0060
43	MIXING APPARATUS	ARA-ERS.MK-0010
44	MIXING APPARATUS	YDK-ERS.MK-CN-0041
45	CONNECTING ELEMENT	YTL-ERS.MK-KS-0061
46	BOILER (40*40)	M.MTS-ERS-MK-008
47	BASKET	M.MUH-051
48	BEARING ( 6206 ZZ )	M.RLM-NRM-021
49	BEARING ( 6207 ZZ )	M.RLM-NRM-034
50	SHAFT SHAFT	YTL-ERS.MK-KS-0058
51	PLASTIC GEAR	YTL-ERS.MK-KS-0055
52	RING 471-20	B-SEG-SYH-018
53	TRANSMISSION ALUMINUM	YDK-ERS.MK-CN-0043
54	CIRCLE BOTTOM PLASTIC	M.ENJ-ERS-PLS-MK-008
55	CIRCLE TOP PLASTIC	M.ENJ-ERS-PLS-MK-007
56	TRANSMISSION	YDK-ERS.MK-CN-0040
57	FOOTTOP COVER	M.ENJ-ERS-PLS-MK-006
58	CAR	M.MON-RAY-001
59	MAGNET	M.MIK-ERS-007
60	MIXING APPARATUS	ARA.FS-ERS.MK-007
61	MIXING APPARATUS	ARA.FS-ERS.MK-005
62	CONNECTING ELEMENT	YTL-ERS.MK-KS-0081

# PLANETARY MIXERS ( SPEED CONTROL )

## G SPARE PART LIST-EXPLODING DRAWING



# PLANETARY MIXERS ( SPEED CONTROL )

## G SPARE PART LIST-EXPLODING DRAWING

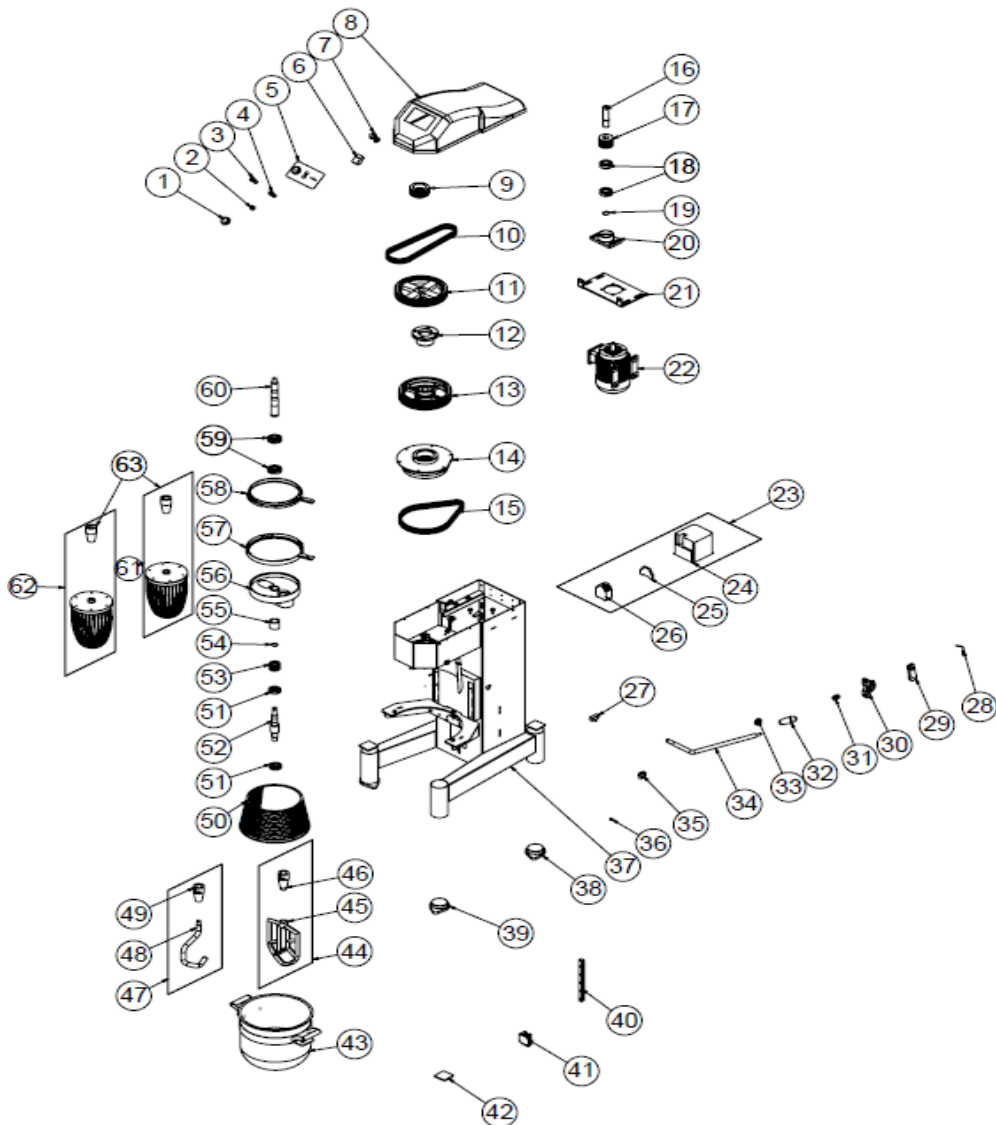
PRODUCT CODE : MK.05		
NO	PRODUCT NAME	P.CODE
1	GREEN LIGHTED BUTTON	ERS.M.ELK-SLT-BTL-011
2	RED BUTTON (MOMENTARY)	M.ELK-SLT-BTL-010
3	BUTTON	M.ENJ-ERS-PLS-PS-018
4	PANEL SHEET	YSC-ERS.SH-LZ-0074
5	POTENTIOMETER	M.ELK-PMT-4,7
6	TIME CLOCK	M.ELK-MEK-MTM-004
7	BUTTON SOCKET	M.AKS-DGM-MUH-009
8	TOP COVER	M.ENJ-ERS-PLS-MK-003
9	TRANSMISSION SLEEVE	YDK-ERS.MK-CN-0042
10	STRAP (9.5*1000)	M.KYS-VKY-009
11	SLEEVE LOWER PULLEY	YDK-ERS.MK-CN-0035
12	TRANSMISSION PULLEY	YDK-ERS.MK-CN-0037
13	STRAP (9.5*900)	M.KYS-VKY-038
14	SLEEVE UPPER PULLEY	YDK-ERS.MK-CN-0036
15	TENSION SLEEVE	YDK-ERS.MK-CN-0016
16	ENGINE PULLEY	YDK-ERS.MK-CN-0022
17	ENGINE PLATE	YSC-ERS.MK-LZ-0103
18	ELECTRIC MOTOR	M.ELK-MTR-RSM-007
19	GZ1AN11 CONTACTOR	ERS.M.ELK-KNT-KNT-029
20	CONTACTOR LC1D09M7	ERS.M.ELK-KNT-KNT-027
21	SPEED CONTROLLER	M.ELK-SRC-003
22	PANEL GROUP	M.ELK-PNO-MK-002
23	LIFTING ARM	YTL-ERS.MK-KS-0075
24	BEARING ( UCFL 204G )	M.RLM-YTK-002
25	MAGNETIC SENSOR	M.ELK-SWC-KTG-001
26	MAGNET	M.MIK-ERS-007
27	HANDLE	ERS.M.AKS-KLP-BKL-010
28	STEERING HANDLE	YTL-ERS.MK-KS-0059
29	STEERING HANDLE	YTL-ERS.MK-KS-0066

## PLANETARY MIXERS ( SPEED CONTROL )

30	PG-13,5 CABLE FITTING	M.ELK-RKR-PLS-007
31	CHASSIS	-
32	FOOT BOTTOM RUBBER	M.ENJ-ERS-LST-042
33	PLASTIC FOOT	M.ENJ-ERS-LST-044
34	SLED	M.MON-RAY-002
35	CAR	M.MON-RAY-001
36	FOOTTOP COVER	M.ENJ-ERS-PLS-MK-006
37	BOILER 43*46	M.MTS-ERS-MK-009
38	BASKET	M.MUH-053
39	MIXING ELEMENT	YTL-ERS.MK-KS-0068
40	MIXING ELEMENT	YTL-ERS.MK-KS-0060
41	MIXING APPARATUS	ARA-ERS.MK-0013
42	MIXING APPARATUS	YDK-ERS.MK-CN-0044
43	CONNECTING ELEMENT	YTL-ERS.MK-KS-0061
44	MIXING APPARATUS	ARA-ERS.MK-0014
45	SHAFT SHAFT	YTL-ERS.MK-KS-0058
46	BEARING ( 6206 ZZ )	M.RLM-NRM-021
47	RING 471-20	B-SEG-SYH-018
48	BEARING (630374 ZZ )	M.RLM-NRM-020
49	TRANSMISSION PIPE	YTL-ERS.MK-KS-0067
50	BEARING ( 6207 ZZ )	M.RLM-NRM-034
51	CIRCLE BOTTOM PLASTIC	M.ENJ-ERS-PLS-MK-008
52	CIRCLE TOP PLASTIC	M.ENJ-ERS-PLS-MK-007
53	TRANSMISSION ALUMINUM	YDK-ERS.MK-CN-0043
54	TRANSMISSION	YDK-ERS.MK-CN-0040
55	TRANSMISSION SHAFT	YTL-ERS.MK-KS-0056
56	RING 471-30	B-SEG-SYH-016
57	PLASTIC GEAR	YTL-ERS.MK-KS-0055
58	SLEEVE SHAFT	YTL-ERS.MK-KS-0024
59	SWITCH	M.ELK-SWC-ERS-004
60	MIXING APPARATUS	ARA.FS-ERS.MK-006
61	MIXING APPARATUS	ARA.FS-ERS.MK-008
62	CONNECTING ELEMENT	YTL-ERS.MK-KS-0081

# PLANETARY MIXERS ( SPEED CONTROL )

## G SPARE PART LIST-EXPLODING DRAWING



MK.07

**PLANETARY MIXERS ( SPEED CONTROL )****G SPARE PART LIST-EXPLODING DRAWING**

<b>PRODUCT CODE : MK.07</b>		
<b>NO</b>	<b>PRODUCT NAME</b>	<b>P.CODE</b>
1	BUTTON	M.ENJ-ERS-PLS-PS-018
2	BUTTON SOCKET	M.AKS-DGM-MUH-009
3	GREEN LIGHTED BUTTON	ERS.M.ELK-SLT-BTL-011
4	RED BUTTON (MOMENTARY)	M.ELK-SLT-BTL-010
5	PANEL SHEET	YSC-ERS.SH-LZ-0074
6	TIME CLOCK	M.ELK-MEK-MTM-004
7	POTENTIOMETER	M.ELK-PMT-4,7
8	TOP COVER	M.ENJ-ERS-PLS-MK-004
9	ENGINE PULLEY	YDK-ERS.MK-CN-0030
10	STRAP (9.5*875)	M.KYS-VKY-012
11	SLEEVE UPPER PULLEY	YDK-ERS.MK-CN-0036
12	TRANSMISSION SLEEVE	YDK-ERS.MK-CN-0042
13	TRANSMISSION PULLEY	YDK-ERS.MK-CN-0037
14	TRANSMISSION	YDK-ERS.MK-CN-0040
15	STRAP (9.5*1000)	M.KYS-VKY-009
16	SLEEVE SHAFT	YTL-ERS.MK-KS-0024
17	SLEEVE LOWER PULLEY	YDK-ERS.MK-CN-0035
18	BEARING (630374 ZZ )	M.RLM-NRM-020
19	RING 471-30	B-SEG-SYH-016
20	TENSION SLEEVE	YDK-ERS.MK-CN-0016
21	ENGINE PLATE	M.PLTN-ERS-MK-012
22	ELECTRIC MOTOR	M.ELK-MTR-RSM-009
23	PANEL GROUP	M.ELK-PNO-MK-004
24	SPEED CONTROLLER	M.ELK-SRC-003
25	GZ1AN11 CONTACTOR	ERS.M.ELK-KNT-KNT-029
26	CONTACTOR LC1D09M7	ERS.M.ELK-KNT-KNT-027
27	SWITCH	M.ELK-SWC-ERS-004
28	MAGNETIC SENSOR	M.ELK-SWC-KTG-001
29	LIFTING ARM	YTL-ERS.MK-KS-0075

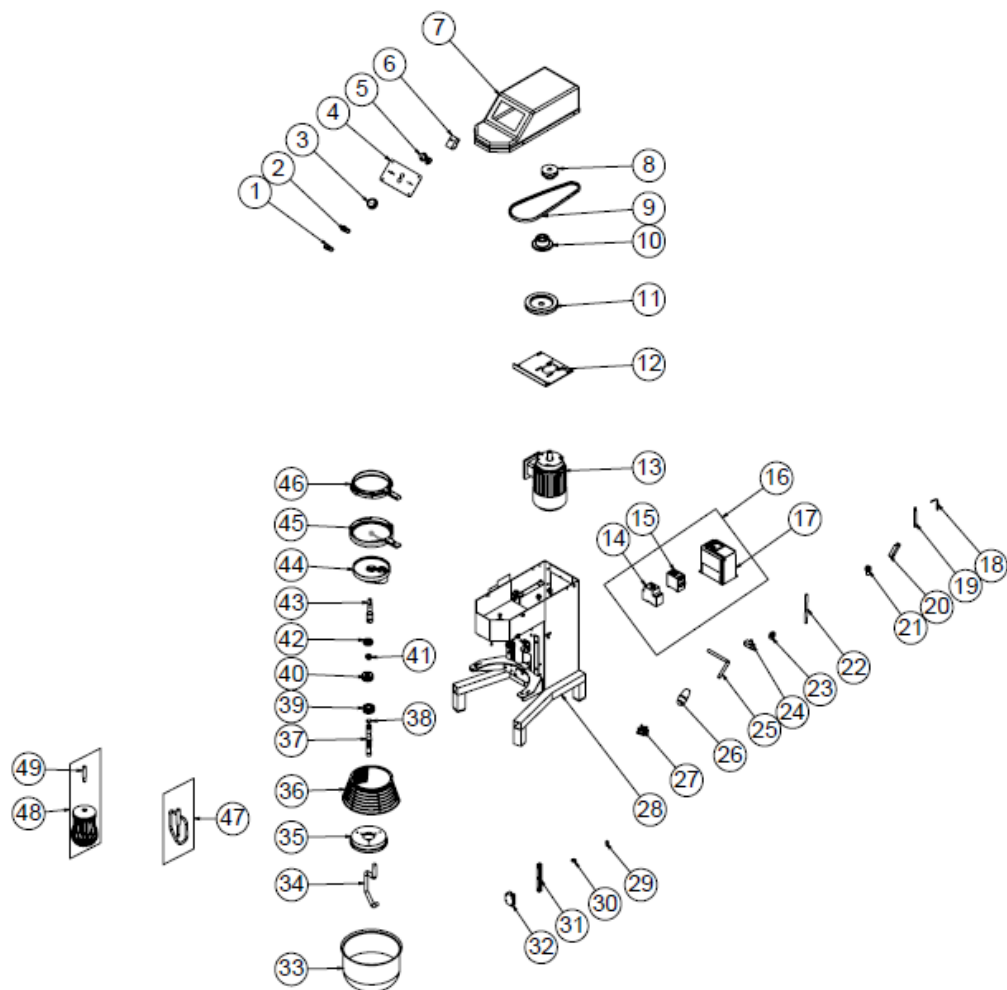


## PLANETARY MIXERS ( SPEED CONTROL )

30	BEARING ( UCFL 204G )	M.RLM-YTK-002
31	PG-13,5 CABLE FITTING	M.ELK-RKR-PLS-007
32	HANDLE	ERS.M.AKS-KLP-BKL-010
33	STAMP	YTL-ERS.MK-KS-0076
34	STEERING HANDLE	YTL-ERS.MK-KS-0059
35	STEERING HANDLE	YTL-ERS.MK-KS-0066
36	MAGNET	M.MIK-ERS-007
37	CHASSIS	-
38	FOOT BOTTOM RUBBER	M.ENJ-ERS-LST-042
39	PLASTIC FOOT	M.ENJ-ERS-LST-044
40	SLED	M.MON-RAY-002
41	CAR	M.MON-RAY-001
42	FOOTTOP COVER	M.ENJ-ERS-PLS-MK-006
43	BOILER 36*36	M.MTS-ERS-MK-007
44	MIXING APPARATUS	ARA-ERS.MK-0007
45	MIXING APPARATUS	YDK-ERS.MK-CN-0045
46	CONNECTING ELEMENT	YTL-ERS.MK-KS-0061
47	MIXING APPARATUS	ARA-ERS.MK-0003
48	MIXING ELEMENT	YTL-ERS.MK-KS-0069
49	MIXING ELEMENT	YTL-ERS.MK-KS-0060
50	BASKET	M.MUH-054
51	BEARING ( 6206 ZZ )	M.RLM-NRM-021
52	SHAFT SHAFT	YTL-ERS.MK-KS-0058
53	PLASTIC GEAR	YTL-ERS.MK-KS-0055
54	RING 471-20	B-SEG-SYH-018
55	TRANSMISSION PIPE	YTL-ERS.MK-KS-0067
56	TRANSMISSION ALUMINUM	YDK-ERS.MK-CN-0043
57	CIRCLE BOTTOM PLASTIC	M.ENJ-ERS-PLS-MK-008
58	CIRCLE TOP PLASTIC	M.ENJ-ERS-PLS-MK-007
59	BEARING ( 6207 ZZ )	M.RLM-NRM-034
60	TRANSMISSION SHAFT	YTL-ERS.MK-KS-0056
61	MIXING APPARATUS	ARA.FS-ERS.MK-010
62	MIXING APPARATUS	ARA.FS-ERS.MK-009
63	CONNECTING ELEMENT	YTL-ERS.MK-KS-0081

# PLANETARY MIXERS ( SPEED CONTROL )

## G SPARE PART LIST-EXPLODING DRAWING



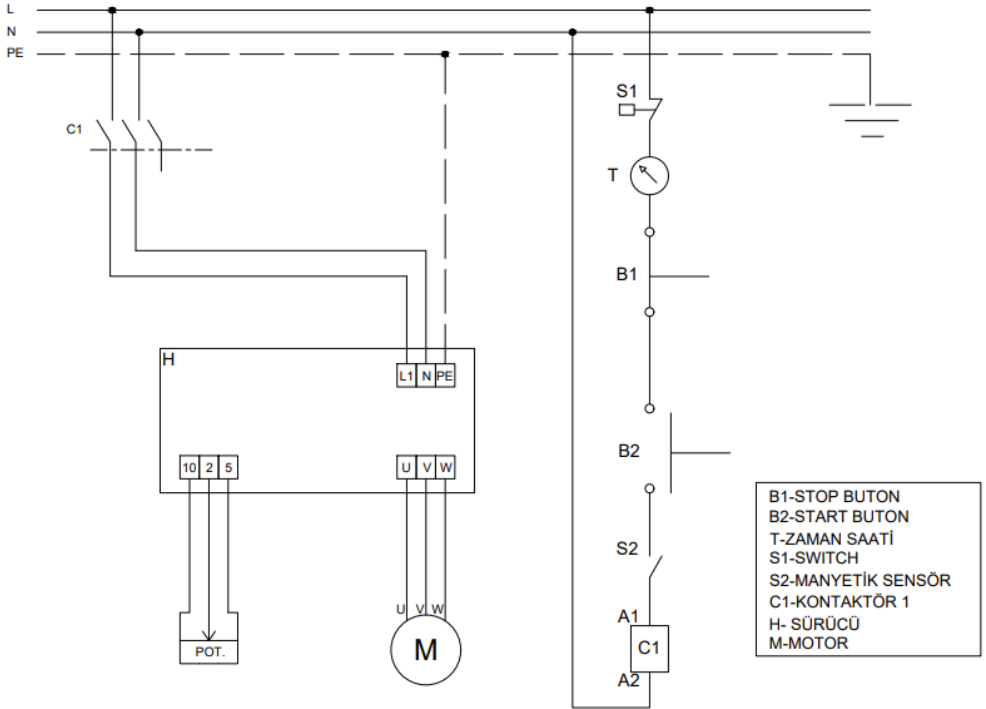
EMP.10

# PLANETARY MIXERS ( SPEED CONTROL )

## G SPARE PART LIST-EXPLODING DRAWING

PRODUCT CODE : EMP.10		
NO	PRODUCT NAME	P.CODE
1	GREEN LIGHTED BUTTON	ERS.M.ELK-SLT-BTL-011
2	RED BUTTON (MOMENTARY)	M.ELK-SLT-BTL-010
3	BUTTON	M.ENJ-ERS-PLS-PS-018
4	PANEL SHEET	YSC-ERS.SH-LZ-0074
5	POTENTIOMETER	M.ELK-PMT-4.7
6	TIME CLOCK	M.ELK-MEK-MTM-004
7	TOP COVER	M.ENJ-ERS-PLS-MK-013
8	ENGINE PULLEY	YDK-ERS.MK-CN-0034
9	STRAP (13X950)	M.KYS-VKY-007
10	barrel	YDK-ERS.MK-CN-0006
11	TRANSMISSION PULLEY	YDK-ERS.MK-CN-0033
12	ENGINE PLATE	YSC-ERS.MK-LZ-0005
13	ELECTRIC MOTOR	M.ELK-MTR-RSM-074
14	GZ1AN11 CONTACTOR	ERS.M.ELK-KNT-KNT-029
15	CONTACTOR LC1D09M7	ERS.M.ELK-KNT-KNT-027
16	ELECTRICAL PANEL GROUP	M.ELK-PNO-MK-001
17	SPEED CONTROLLER	M.ELK-SRC-003
18	MAGNETIC SENSOR	M.ELK-SWC-KTG-001
19	SHOCK ABSORBER	M.MUH-056
20	PISTON FITTING	YTL-ERS.MK-KS-0073
21	BALL CONNECTION	M.MUH-049
22	SLIDE GIJON	YTL-ERS.MK-KS-0050
23	LIFTING ARM LOCATION	YTL-ERS.MK-KS-0074
24	SWITCH	ERS.M.ELK-SWC-EMAS-002
25	ARM	YTL-ERS.MK-KS-0070
26	HANDLE	ERS.M.AKS-KLP-BKL-010
27	PLASTIC WEDGE	M.PLS-ERS-012
28	CHASSIS	-
29	FIXING PIN	YTL-ERS.MK-KS-0072
30	MAGNET	M.MIK-ERS-007
31	SLED	M.MON-RAY-004
32	CAR	M.MON-RAY-003
33	BOILER (26X20)	M.MTS-ERS-MK-004
34	MIXER	YTL-ERS.MK-KS-0017
35	TRANSMISSION	YDK-ERS.MK-CN-0049
36	BASKET	ERS.M.MUH-057
37	MAIN SHAFT	YTL-ERS.MK-KS-0001
38	RING 471-20	B-SEG-SYH-018
39	STEEL GEAR	YTL-ERS.MK-KS-0004
40	PLASTIC GEAR	YTL-ERS.MK-KS-0003
41	BUTTON SOCKET	M.AKS-DGM-MUH-009
42	BEARING ( 6004 2RS )	M.RLM-NRM-016
43	SHAFT SHAFT	YTL-ERS.MK-KS-0002
44	TRANSMISSION	YDK-ERS.MK-CN-0004
45	CIRCLE BOTTOM PLASTIC	M.ENJ-ERS-PLS-MK-011
46	CIRCLE TOP PLASTIC	M.ENJ-ERS-PLS-MK-012
47	WHIPPING PALLET	ARA-ERS.MK-0016
48	WHISK	ARA-ERS.MK-0015
49	HOLDING SHAFT	YTL-ERS.MK-KS-0010

## H ELECTRIC CIRCUIT SCHEMA



B1- STOP BUTTON

B2- START BUTTON

T-TIME CLOCK

S1- SWITCH

S2- MAGNETIC SENSOR

C1- CONTACTOR 1

H-DRIVER

M-ENGINE