

# CUTTER MIXER

## CONTENTS

---

<b>A</b>	<b>GENEREAL INFORMATION</b> .....	<b>Page 2</b>
A1	PRODUCT DESCRIPTION .....	Page 3
A2	TECHNICAL INFORMATION .....	Page 3
A3	TRANSPORTATION .....	Page 4
A4	UNPACKING .....	Page 4
<b>B</b>	<b>INSTALLATION</b> .....	<b>Page 4</b>
<b>C</b>	<b>SAFETY INSTRUCTIONS</b> .....	<b>Page 5</b>
<b>D</b>	<b>OPERATION</b> .....	<b>Page 6</b>
<b>E</b>	<b>CLEANING &amp; MAINTENANCE</b> .....	<b>Page 7</b>
<b>F</b>	<b>TROUBLESHOOTING</b> .....	<b>Page 8</b>
<b>G</b>	<b>SPARE PART LIST- EXPLODING DRAWINGS</b> .....	<b>Page 9</b>
<b>H</b>	<b>ELECTRIC CIRCUIT SCHEMA</b> .....	<b>Page 13</b>

## A GENERAL INFORMATION

---

Before installing the appliance, read operation and maintenance instructions carefully. Wrong installation and part changing may damage the product or may cause injury on people. These are not in our company's responsibility to damage the appliance intentionally, negligence, detriments because of disobeying instructions and regulations, wrong connections. Unauthorized intervention to appliance invalidates the warranty.

1. This instruction manual should be kept in a safe place for future reference.
2. **Installation should be made in accordance with ordinances and security rules of that country by a qualified service personnel.**
3. This appliance has to be used by trained person.
4. Please turn off the appliance immediately in the event of malfunction or failure. The appliance should be repaired only by authorized service personnel. Please demand original spare part.

# CUTTER MIXER

## A1 PRODUCT DESCRIPTION

---

\*Professional Cutter Mixer, that provides high efficiency has been designed to be used in industrial kitchens.

Product Code	Dimensions (mm)	Weight (kg)	Packaging Dimensions (mm)
<b>EMP.350</b>	245x360x550	19	400x320x620
<b>SD.01Y</b>	340x500x390	18	390x550x440

## A2 TECHNICAL INFORMATION

---

Product Code	Capacity (lt)	Tank Dimensions (mm)	Power (Kw)	Operating Voltage (V)	Cable (mm <sup>2</sup> )	Fuse (A)
<b>EMP.350</b>	8	240x175	0,37	220	3x1,5	10
<b>SD.01Y</b>	8	240x175	0,37	220	3x1,5	10

### **A3 TRANSPORTATION**

---

\*This appliance can be moved by hand from area to area. Do not crash and drop the appliance while transporting.

### **A4 UNPACKING**

---

\*Please unpack the package according to the security codes and ordinances of current country and get rid from the pack. Parts which contacts with food are produced by stainless steel. All plastic parts are marked by material's symbol.

\*Please check that all the parts of appliance had come completely and if they are damaged or not during the shipping.

### **B INSTALLATION**

---

\*Please place the product to straight and sturdy ground, please take necessary steps against possibility of overturn.

\*Technician who will serve for installation and service for the appliance must be professional on this subject and must have installation and service licenses by the company.

\*Connection to Electric Power Supply must be done by authorized person .

\*Please be sure that the voltage connected to appliance must be equal with the voltage which is on appliance's label.



This appliance must be connected to an earthed outlet in accordance with safety rules and standards.










\*Appliance's earthing must be connected to earthing line on panel which is nearest to electric installation.

\*Connection to the main fuse and leak current fuse must be done in accordance with the current regulations.

# CUTTER MIXER

## C SAFETY INSTRUCTIONS

---

-  \*Do not use the appliance in insufficient lighted place.
-  \*Do not touch the moving attachments while the appliance operates.
-  \*Do not install the appliance in the presence of flammable or explosive materials.
-  \*Do not operate the appliance when the machine is empty.
-  \*Do not load so less or more than appliance's capacity.
-  \*Do not attempt to use the appliance without suitable protective equipments.
-  \*Because of any reason if there is a fire or flame flare where the appliance is used, turn off all gas valves and electric contactor switch quickly and use fire extinguisher. Never use water to extinguish the fire.
-  \*All the damages because of not having earthing connection will not be on warranty.
-  \*When the appliance is stopped, the blade in the tank will go on turning for a while. Do not put your hands into the tank at that time.

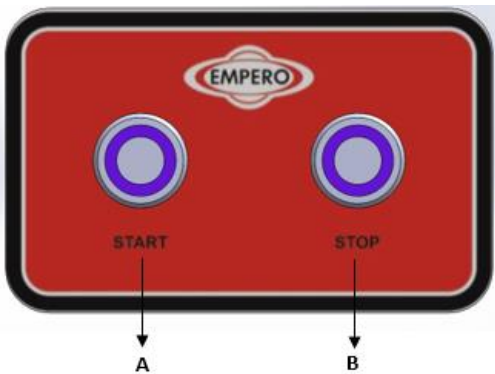
## D OPERATION

### \*Control Panel;

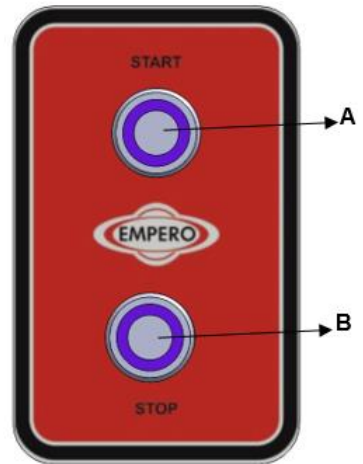
**A** : OFF/ STOP BUTTON

**B** : ON/ START BUTTON

#### SD.01Y



#### EMP.350



### \*Operating;

- Before operating the appliance, clean the blade and tank with wet cloth and dry.
- Provide the ducts on cutting blades to pass on to the shaft.
- After loading the materials into the tank, put the lid on the tank.
- Press START button to operate the appliance.
- If it is wanted to add material without opening the lid while the appliance is working, solid materials can be added through lid space after dividing into small pieces.
- Press STOP button to turn off the appliance.
- After the operation completed, unplug the power supply.

# CUTTER MIXER

## **E      CLEANING & MAINTENANCE**

---

### **CLEANING AND MAINTENANCE AFTER EVERY USE**

- Clean outer surface of appliance, tank and cutting blade with hot water and then dry.
- Always turn off the appliance and disconnect from the power supply before cleaning.
- Do not use abrasive cleaning chemicals as these can leave harmful residues.
- Do not clean the appliance by spraying water directly, otherwise electric motor may get damaged.

### **PERIODIC CLEANING AND MAINTENANCE**

- Maintenance should be done by qualified person.
- Get the periodic maintenance of the appliance once in every 15 days.
- The Cutter Mixer requires low maintenance (Motor and ball bearings are lubricated ).
- Maintenance of appliance's contactor should be done by compressed air according to frequency of use.
- Maintenance of cutting blade ;  
Grind the blade with aqueous grinding wheels without disrupting blade angle.

## F TROUBLESHOOTING

<b>THE APPLIANCE DOESN'T OPERATE</b>	<ol style="list-style-type: none"> <li>1. Check if the appliance is plugged in.</li> <li>2. Check the electrical connections and voltage.</li> <li>3. Check the dividing tank's lid.</li> </ol>
--------------------------------------	---

<b>THE APPLIANCE IS NOISY</b>	<ol style="list-style-type: none"> <li>1. Check the blades.If the ducts on blade are not passed into the shafts,blade may move and may damage the tank.</li> <li>2. Check that if there is material accumulated in the tank.</li> <li>3. If the motor is noisy,stop it and call authorized service.</li> <li>4. If hard materials are put into the dividing tank,stop the appliance.Take off the hard materials.</li> </ol>
-------------------------------	---

<b>THE APPLIANCE STOPPED</b>	<ol style="list-style-type: none"> <li>1. The appliance can stop due to low voltage.In this situation check the voltage.</li> <li>2. If the appliance is overloaded,turn off the appliance and allow to cool down by taking off some materials from bowl.</li> </ol>
------------------------------	--

<b>WARNING</b>	In case of a change on voltage while operating ; appliance will give warning by sound and stop operating. In this case please replug the appliance.
----------------	---

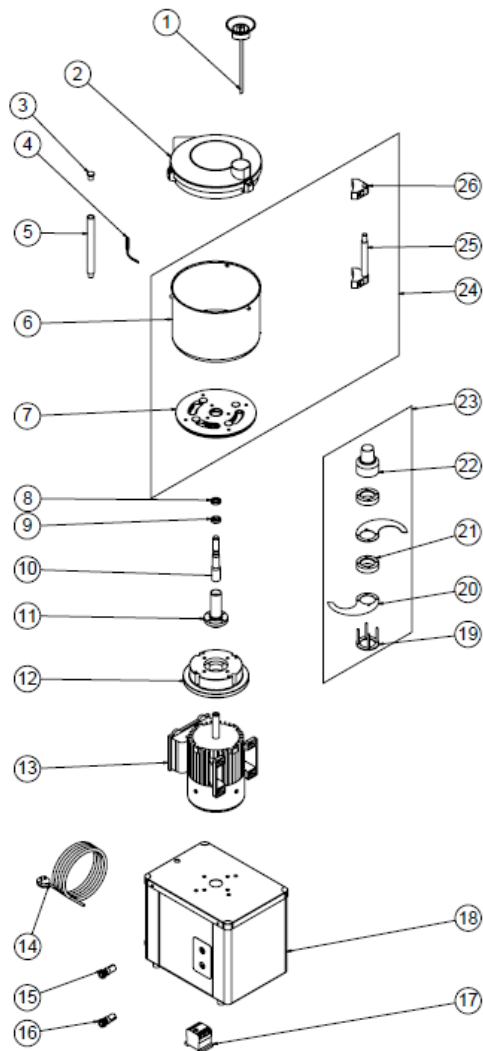
<ul style="list-style-type: none"> <li><input type="checkbox"/> If Cutter Mixing is not done at suitable quality</li> <li><input type="checkbox"/> If any function of security doesn't work             <ul style="list-style-type: none"> <li><input type="checkbox"/> Do not use the appliance.</li> </ul> </li> </ul>
--

**\*If these problems are still going on,contact with our authorized service.**



# CUTTER MIXER

## G SPARE PART LIST-EXPLODING DRAWING



EMP.350

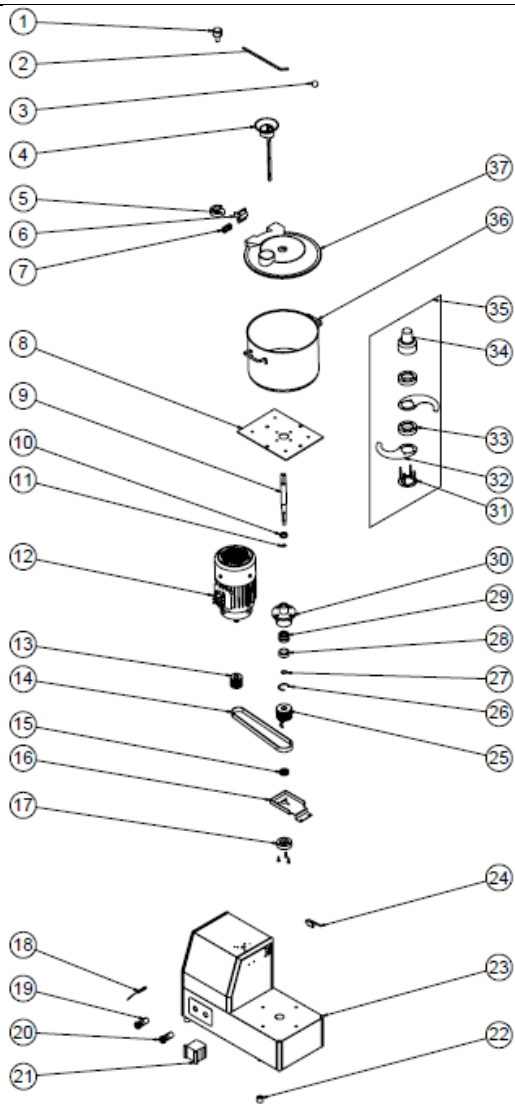
**G SPARE PART LIST-EXPLODING DRAWING**

PRODUCT CODE : EMP.350

NO	PRODUCT NAME	P.CODE
1	COVER FUNNEL	M.ENJ-ERS-PLS-SDM-010
2	POT COVER	M.ENJ-ERS-PLS-SDM-077
3	SENSOR PLASTIC	YTL-ERS.SD-KS-0094
4	MAGNETIC SENSOR	M.ELK-SWC-KTG-001
5	SENSOR SHAFT	YTL-ERS.SD-KS-0101
6	BOILER (240*175)	M.MTS-ERS-SDM-003
7	BOILER BOTTOM PLASTIC	M.ENJ-ERS-PLS-SDM-075
8	FELT 15*26*7	M.CNT-KCE-041
9	BEARING ( 6803 ZZ )	M.RLM-NRM-042
10	SLEEVE SHAFT	YTL-ERS.SD-KS-0046
11	SLEEVE FLANGE	YTL-ERS.SD-KS-0099
12	ENGINE FLANGE	YDK-ERS.SD-CN-0037
13	ELECTRIC MOTOR	M.ELK-MTR-RSM-034
14	3*1,5 CABLE	M.ELK-PWR-PBK-003
15	RED BUTTON (MOMENTARY)	M.ELK-SLT-BTL-010
16	GREEN LIGHTED BUTTON	ERS.M.ELK-SLT-BTL-011
17	CONTACTOR LC1K0910M	ERS.M.ELK-KNT-KNT-021
18	CHASSIS	-
19	KNIFE WASHER	YSC-ERS.SD-LZ-0005
20	ONION KNIFE	M.BCK-SD-002
21	KNIFE PLASTIC	M.ENJ-ERS-PLS-SDM-006
22	KNIFE PLASTIC	M.ENJ-ERS-PLS-SDM-089
23	KNIFE SET	ARA-ERS.SD-0015
24	HOPPER HANDLE	ARA-ERS.SD-0017
25	BOILER HANDLE	YTL-ERS.SD-KS-0095
26	ARM PLASTIC	M.ENJ-ERS-PLS-SDM-076

# CUTTER MIXER

## G SPARE PART LIST-EXPLODING DRAWING



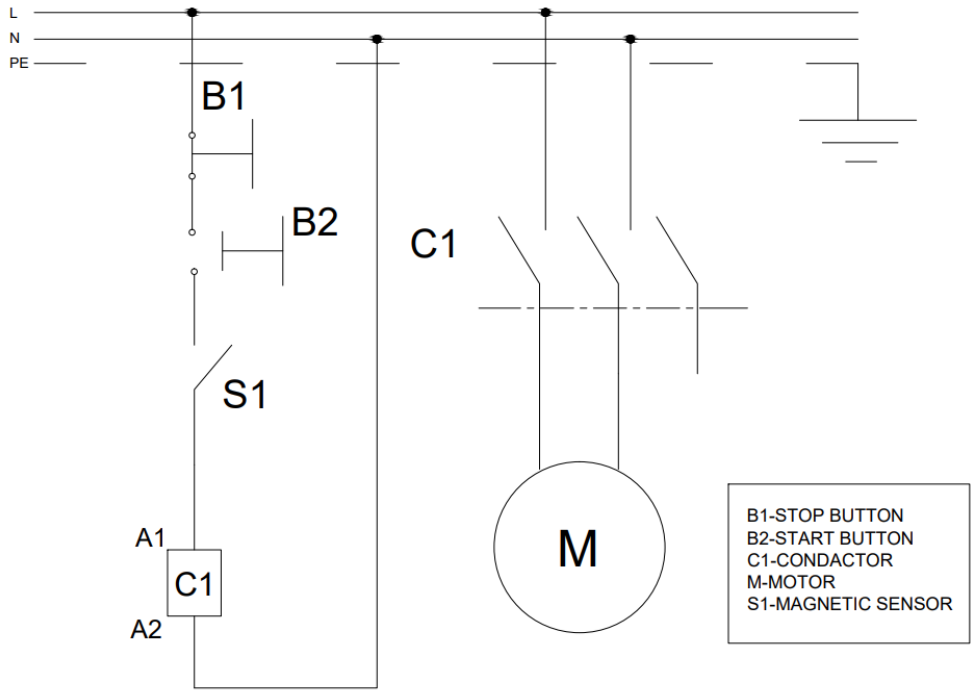
SD.01Y

## G SPARE PART LIST-EXPLODING DRAWING

PRODUCT CODE : SD.01Y		
NUMBER	PRODUCT NAME	PRODUCT CODE
1	ARM CONNECTION SCREW	YTL-ERS.SD-KS-0050
2	ARM CONNECTION SHAFT	YTL-ERS.SD-KS-0051
3	SPHERE KNOB	M.AKS-KLP-BKL-018
4	COVER FUNNEL	M.ENJ-ERS-PLS-SDM-010
5	ARM CONNECTION	M.ENJ-ERS-PLS-SDM-080
6	SWITCH PLASTIC	M.ENJ-ERS-PLS-SDM-042
7	BOILER CENTERING PLASTIC	M.ENJ-ERS-PLS-SDM-038
8	SLEEVE AGENCY SHEET	YSC-ERS.SD-LZ-0036
9	SLEEVE SHAFT	YTL-ERS.SD-KS-0054
10	FELT 18*25*6	M.CNT-KCE-011
11	RING 472-47	B-SEG-SYH-012
12	ELECTRIC MOTOR	M.ELK-MTR-RSM-059
13	ENGINE PULLEY	YTL-ERS.SD-KS-0055
14	7PJ660 BELT	M.KYS-TKY-008
15	BEARING ( 6200 2RS )	M.RLM-NRM-011
16	CENTERING SHEET	YSC-ERS.SD-LZ-0037
17	SLEEVE SHAFT POLYAMIDE	YTL-ERS.SD-KS-0053
18	MAGNETIC SENSOR	M.ELK-SWC-KTG-001
19	GREEN LIGHTED BUTTON	ERS.M.ELK-SLT-BTL-011
20	RED BUTTON (MOMENTARY)	M.ELK-SLT-BTL-010
21	CONTACTOR LC1K0910M	ERS.M.ELK-KNT-KNT-021
22	LOWER STRUT RUBBER	M.ENJ-ERS-LST-011
23	CHASSIS	-
24	SWITCH	ERS.M.ELK-SWC-EMAS-004
25	SLEEVE PULLEY	YTL-ERS.SD-KS-0052
26	RING (472-35)	B-SEG-SYH-001
27	RING 471-15	B-SEG-SYH-002
28	SLEEVE PIPE	YBR-ERS.SD-KS-0009
29	BEARING ( 6202 2RS )	M.RLM-NRM-003
30	barrel	YDK-ERS.SD-CN-0013
31	KNIFE WASHER	YSC-ERS.SD-LZ-0005
32	ONION KNIFE	M.BCK-SD-002
33	KNIFE PLASTIC	M.ENJ-ERS-PLS-SDM-006
34	BLADE TOP PLASTIC	M.ENJ-ERS-PLS-SDM-005
35	KNIFE SET	ARA-ERS.SD-0015
36	BOILER (240*175)	M.MTS-SDM-010
37	PLASTIC COVER	M.ENJ-ERS-PLS-SDM-037

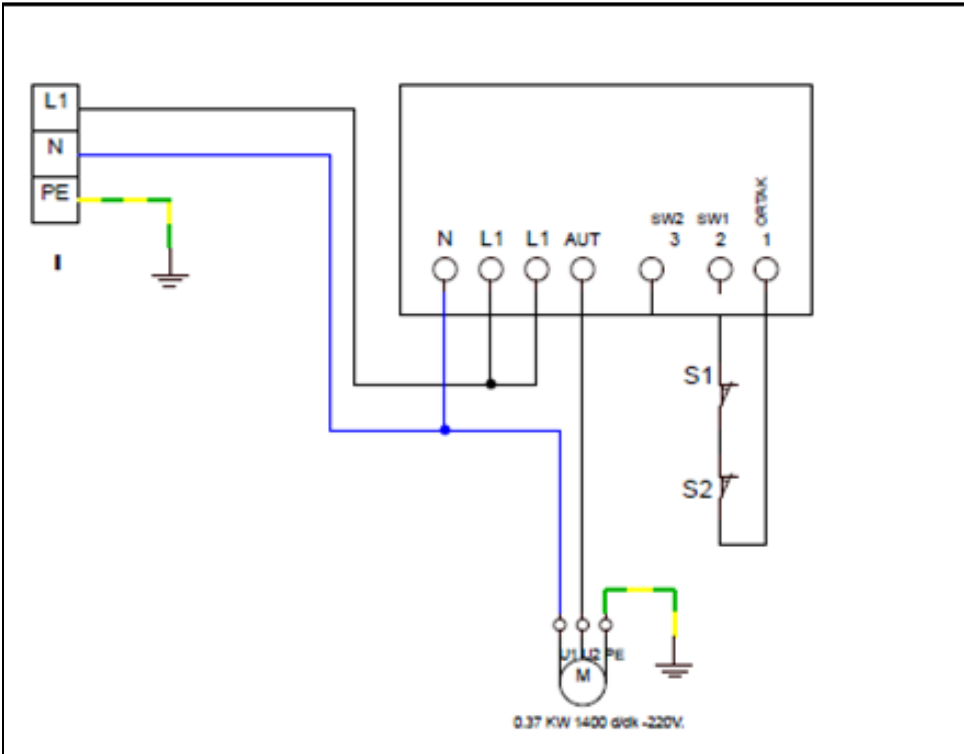
# CUTTER MIXER

## H ELECTRIC CIRCUIT SCHEMA



350

## H ELECTRIC CIRCUIT SCHEMA



SD.01Y

PRODUCT CODE	POWER (KW)	RPM	VOLTAGE
SD.01Y	0,37	1400	220

I	M	S2	S1
Terminal	Motor	Mechanic Win Switch	Magnetic Cover Switch