



HEAT BANQUET TROLLEY

CONTENTS

| | | |
|----------|---|----------------|
| A | GENERAL INFORMATION | Page 2 |
| A1 | PRODUCT DESCRIPTION | Page 3 |
| A2 | TECHNICAL INFORMATION | Page 3 |
| A3 | TRANSPORTATION | Page 4 |
| A4 | UNPACKING | Page 4 |
| B | INSTALLATION | Page 4 |
| C | SAFETY INSTRUCTIONS | Page 5 |
| D | OPERATION | Page 6 |
| E | CLEANING & MAINTENANCE | Page 7 |
| F | TROUBLESHOOTING..... | Page 8 |
| G | SPARE PART LIST- EXPLODING DRAWING | Page 9 |
| H | ELECTRIC CIRCUIT SCHEMA | Page 17 |

A GENERAL INFORMATION

Before installing the appliance, read operation and maintenance instructions carefully. Wrong installation and part changing may damage the product or may cause injury on people. These are not in our company's responsibility to damage the appliance intentionally, negligence, detriments because of disobeying instructions and regulations, wrong connections. Unauthorized intervention to appliance invalidates the warranty.

1. This instruction manual should be kept in a safe place for future reference.
2. **Installation should be made in accordance with ordinances and security rules of that country by a qualified service personnel.**
3. This appliance has to be used by trained person.
4. Please turn off the appliance immediately in the event of malfunction or failure. The appliance should be repaired only by authorized service personnel. Please demand original spare part.

HEAT BANQUET TROLLEY

A1 PRODUCT DESCRIPTION

*The Professional Cold Banquet Trolley, that provides high efficiency has been designed to be used in industrial kitchens.

| Product Code | Dimensions (mm) | Weight (kg) | Packaging Dimensions (mm) |
|----------------|-----------------|-------------|---------------------------|
| EMP.BQ1-12H | 536x920x1480 | 65 | 566x964x1590 |
| EMP.BQ1-12+12H | 1115x920x1400 | 130 | 1151x964x1530 |
| EMP.BQ2-12H | 740x1036x1480 | 79 | 770x1080x1590 |
| EMP.BQ2-12+12H | 1526x1036x1400 | 152 | 1560x1080x1530 |

A2 TECHNICAL INFORMATION

| Product Code | Capacity | Power (KW) | Operat. Volt. (V) | Ampere (A) | Cable (mm ²) |
|----------------|-----------|------------|-------------------|------------|--------------------------|
| EMP.BQ1-12H | 12xGn 1/1 | 1,9 | 220 | 8,7 | 3x1,5 |
| EMP.BQ1-12+12H | 24xGn 1/1 | 3,8 | 220 | 17,4 | 3x1,5 |
| EMP.BQ2-12H | 12xGn 2/1 | 1,9 | 220 | 8,7 | 3x1,5 |
| EMP.BQ2-12+12H | 24xGn 2/1 | 3,8 | 220 | 17,4 | 3x1,5 |

A3 TRANSPORTATION

*This appliance can not be moved by hand from area to area. It must be moved on pallet with forklift truck.

A4 UNPACKING


*Please unpack the package according to the security codes and ordinances of current country and get rid from the pack. Parts which contacts with food are produced by stainless steel. All plastic parts are marked by material's symbol.

*Please check that all the parts of appliance had come completely and if they are damaged or not during the shipping.

B INSTALLATION

*Technician who will serve for installation and service for the appliance must be professional on this subject and must have installation and service licenses by the company.

*Please be sure that the voltage connected to appliance must be equal with the voltage which is on appliance's label.










 This appliance must be connected to an earthed outlet in accordance with safety rules and standards.

*Appliance's earthing must be connected to earthing line on panel which is nearest to electric installation.

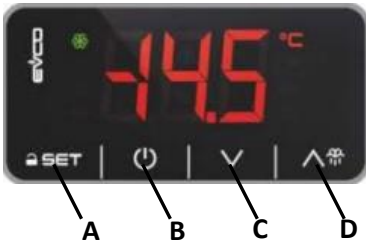
*Connection to the main fuse and leak current fuse must be done in accordance with the current regulations.

HEAT BANQUET TROLLEY

C SAFETY INSTRUCTIONS

-  *Do not use the appliance in insufficient lighted place.
-  *Do not touch the moving attachments while the appliance operates.
-  * Do not connect the device to an outlet close to the presence of flammable and explosive materials..
-  *Do not load so less or more than appliance's capacity.
-  *Do not attempt to use the appliance without suitable protective equipments.
-  *Because of any reason if there is a fire or flame flare where the appliance is used,turn off all gas valves and electric contactor switch quickly and use fire extinguisher .Never use water to extinguish the fire.
-  *All the damages because of not having earthing connection will not be on warranty.
-  *Get the necessary cautions against electric danger.
-  *Do not leave the door openen while moving the banquet trolley.It may be dangerous to move the door without control.Unplug and leave the plug on the trolley.

D OPERATION

***Control Panel;**

- A** : SET Button
- B** : ON/OFF Button
- C** : Down Arrow Button
- D** : Up Arrow Button

***Operating;**

- Be sure that the inside of the trolley is clean and the trolley is constant to where it is before starting any process.
- Plug in the appliance.
- Switch to ON position.
- After Indicator lamps signal, inside temperature will be shown.
- You can fill the banquet trolley during heating process..In this situation heating time will be a little bit longer.
- After Heating Starts ;
 - Switch to OFF position. All lamps will be off.
- Unplug it and leave the plug on the trolley.

HEAT BANQUET TROLLEY

E CLEANING & MAINTENANCE

➤ **CLEANING AND MAINTENANCE AFTER EVERY USE**

- Always turn off the appliance and disconnect from the power supply before cleaning.
- Clean the inside of appliance after every use.
- Clean the inside and outside of the appliance with moist cloth and then dry.
- Do not use abrasive cleaning chemicals as these can leave harmful residues.
- Do not clean the appliance by spraying water directly, otherwise electric motor may get damaged.

➤ **PERIODIC CLEANING AND MAINTENANCE**

- Maintenance should be done by qualified person.
- Get the periodic maintenance of the appliance once in every 15 days.
- Check the wheels, electric connections, fan, control system, door and door lock once in every 6 months.
- Check the door wick in periodic time and set. Change the wicks that can not be used.

F TROUBLESHOOTING

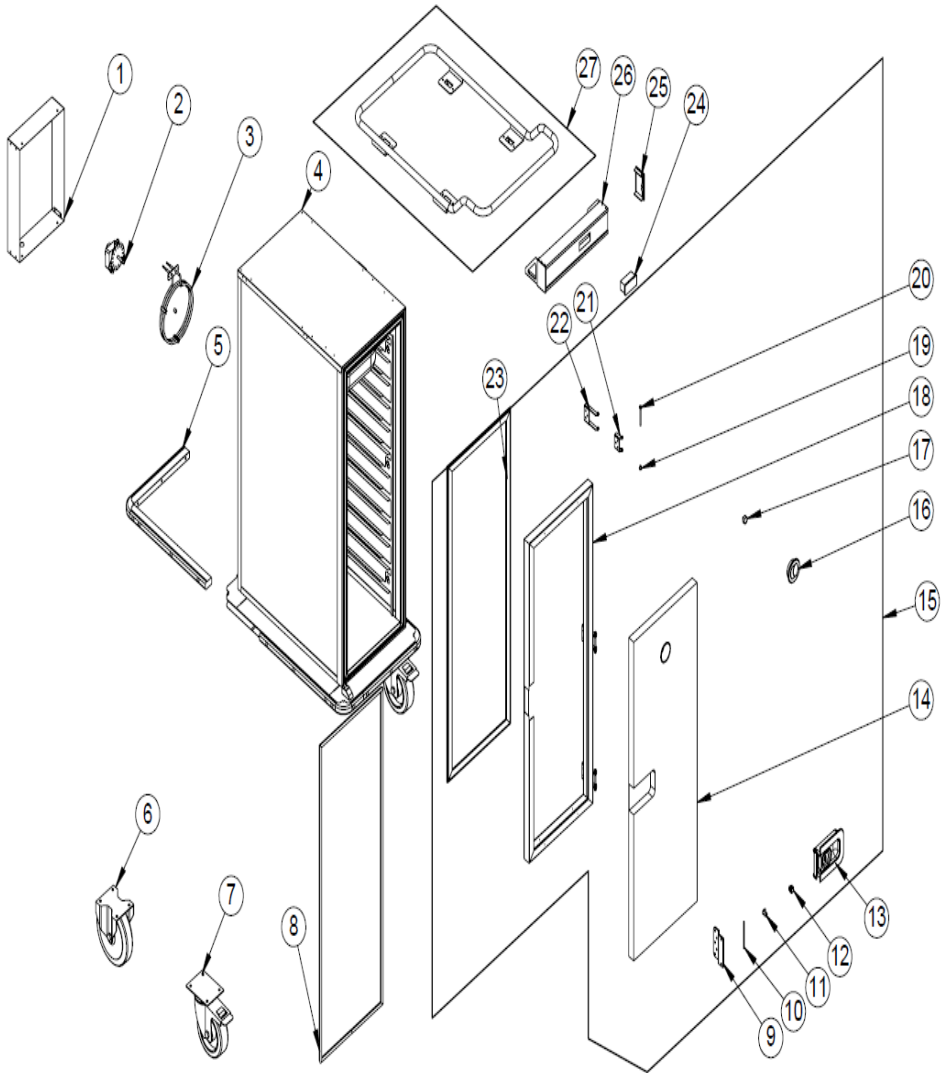
| | |
|--------------------------------------|--|
| THE APPLIANCE DOESN'T OPERATE | <ol style="list-style-type: none">1. Check if the appliance is plugged in.2. Check the electrical connections and voltage. |
| THE APPLIANCE DOESN'T Heat | <ol style="list-style-type: none">1. Check if the thermostat control panel operates or not.2. Fan may have error. In this situation inform the service.3. If the control system has error, the appliance doesn't heat. |
| THE APPLIANCE STOPPED | <ol style="list-style-type: none">1. The appliance can stop due to low voltage. In this situation check the voltage.2. If there is any load on banquet trolley, the appliance may stop. |
| THE BRAKES CAN NOT BE APPLIED | <ol style="list-style-type: none">1. Brakes and Wheels may have error. In this situation inform the service. |
| DOOR IS NOT CLOSED | <ol style="list-style-type: none">1. The banquet trolley may be overloaded2. Door lock may have error. |

- If Heating is not done at suitable quality
- If any function of security doesn't work
 - Do not use the appliance.

***If these problems are still going on, contact with our authorized services.**

HEAT BANQUET TROLLEY

G SPARE PART LIST-EXPLODING DRAWING



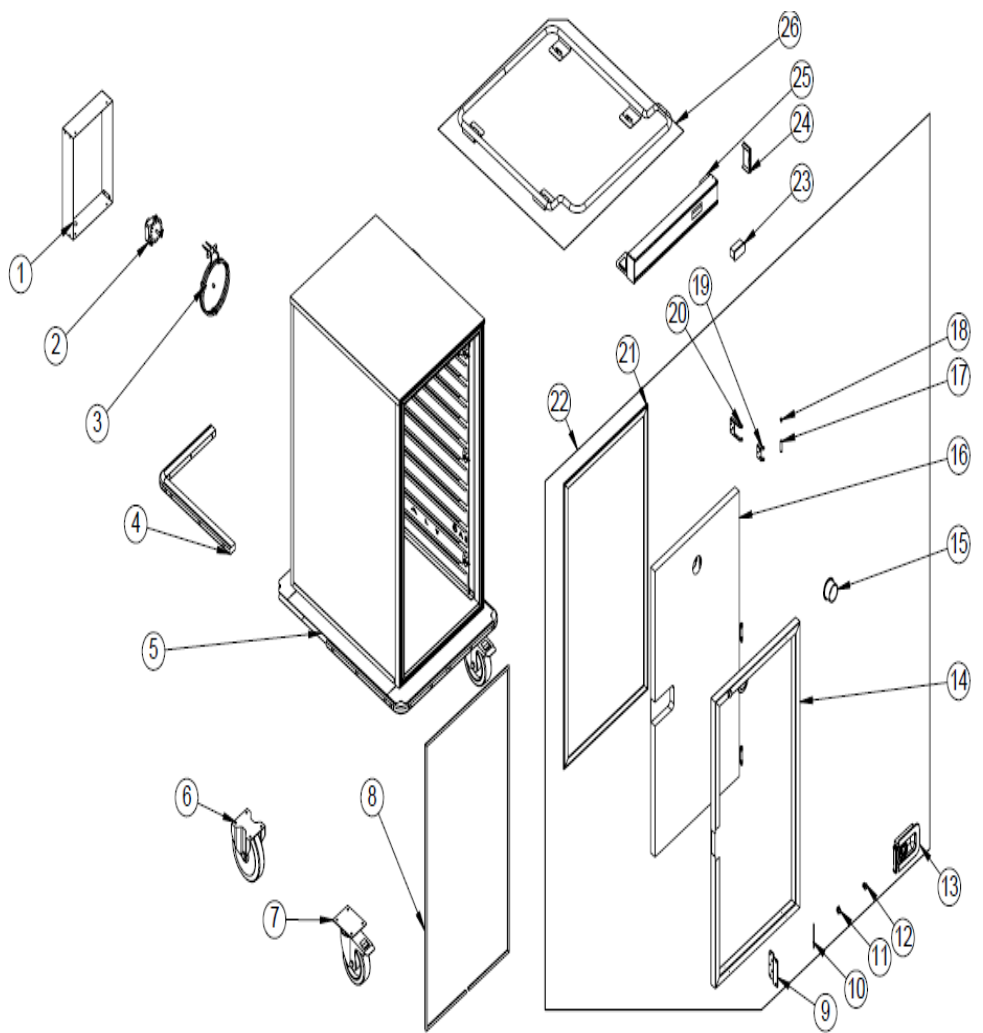
EMP.BQ1-12H

G SPARE PART LIST-EXPLODING DRAWING

| PRODUCT CODE: EMP. BQ1-12H | | |
|----------------------------|-----------------------|-------------------------|
| NO | PRODUCT NAME | P.CODE |
| 1 | ENGINE COVER SHEET | YSC-ERK.BQ-LZ-0169 |
| 2 | FAN MOTOR | ERK.M.ELK-MTR-FMT-004 |
| 3 | RESISTANCE | M.ELK-RKR-BRU-ERK-001 |
| 4 | CHASSIS | - |
| 5 | BUMPER RUBBER | M.ENJ-ERK-PLS-056 |
| 6 | WHEEL WITHOUT BRAKE | M.AKS-TKR-KS-013 |
| 7 | WHEEL WITH BRAKE | M.AKS-TKR-KS-003 |
| 8 | GASKET | M.CNT-ERK-060 |
| 9 | LOCK MATTER SHEET | YSC-ERK.BQ-PN-0346 |
| 10 | DOOR LOCK SHAFT | ERK.YTL-ERK.MED-KS-0063 |
| 11 | KEY | ERK.M.AKS-KLT-GNL-002 |
| 12 | LOCK | ERK.M.AKS-KLT-GNL-001 |
| 13 | DOOR LOCK | M.ENJ-ERK-PLS-055 |
| 14 | COVER PANEL 1098*414 | YMH-ERK.BQ-FSM-0015 |
| 15 | COVER | ARA-ERK.BQ-0016 |
| 16 | VENTILATION PLASTIC | M.ENJ-ERK-PLS-028 |
| 17 | MAGNET | M.MIK-ERK-003 |
| 18 | U PROFILE | HPR-ALM-OZL-ELO-059 |
| 19 | HINGE PLASTIC | YTL-ERK.BQ-KS-0011 |
| 20 | OUTER PIPE | YBR-ERK.BQ-KS-0013 |
| 21 | HINGE INSIDE SHEET | YSC-ERK.BQ-LZ-0172 |
| 22 | HINGE OUTER SHEET | YSC-ERK.BQ-LZ-0171 |
| 23 | HEAT TRANSFER PLASTIC | M.ENJ-ERK-PLS-134 |
| 24 | THERMOSTAT | ERK.M.ELK-EDM-DGT-007 |
| 25 | PANEL SIDE COVER | M.MUH-071 |
| 26 | PANEL SHEET | YSC-ERK.BQ-LZ-0200 |
| 27 | BALCONY PIPE | ARA-ERK.BQ-0041 |

HEAT BANQUET TROLLEY

G SPARE PART LIST-EXPLODING DRAWING



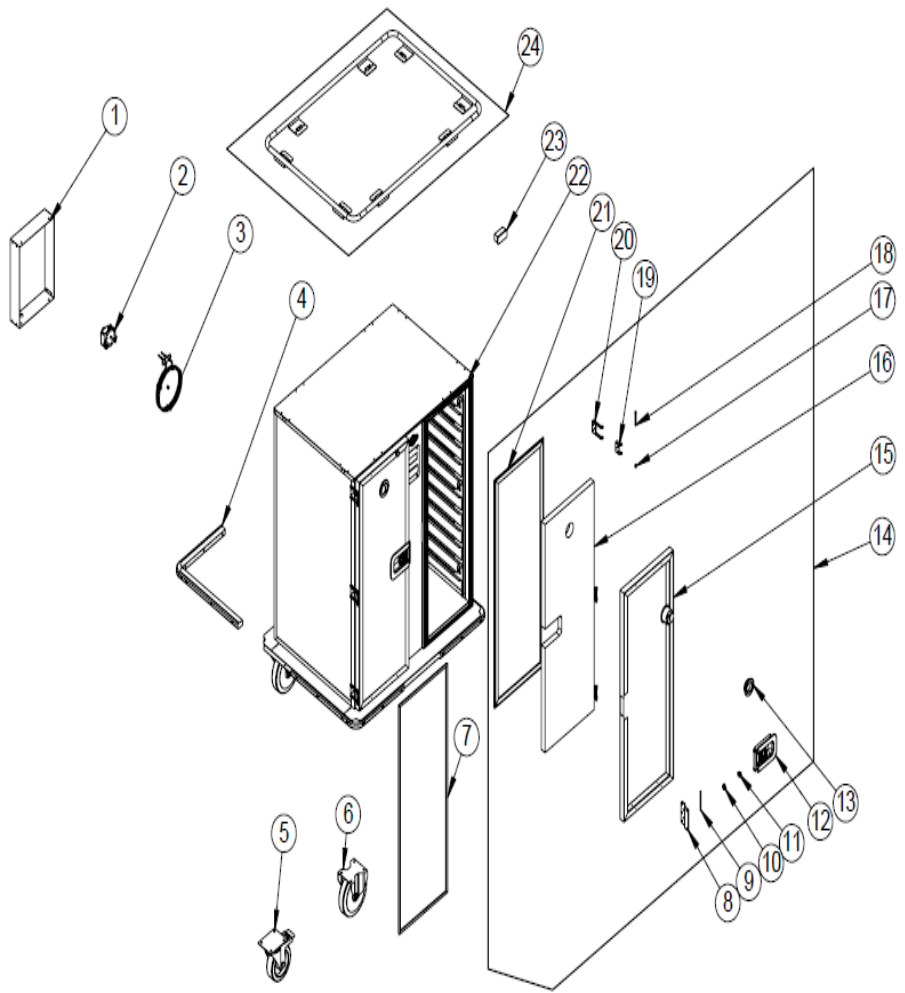
EMP.BQ2-12H

G SPARE PART LIST-EXPLODING DRAWING

| PRODUCT CODE: EMP. BQ2-12H | | |
|----------------------------|-----------------------|-------------------------|
| NO | PRODUCT NAME | P.CODE |
| 1 | ENGINE COVER SHEET | YSC-ERK.BQ-LZ-0169 |
| 2 | FAN MOTOR | ERK.M.ELK-MTR-FMT-004 |
| 3 | RESISTANCE | M.ELK-RKR-BRU-ERK-001 |
| 4 | BUMPER RUBBER | M.ENJ-ERK-PLS-056 |
| 5 | CHASSIS | - |
| 6 | WHEEL WITHOUT BRAKE | M.AKS-TKR-KS-013 |
| 7 | WHEEL WITH BRAKE | M.AKS-TKR-KS-003 |
| 8 | GASKET | M.CNT-ERK-060 |
| 9 | LOCK MATTER SHEET | YSC-ERK.BQ-PN-0346 |
| 10 | DOOR LOCK SHAFT | ERK.YTL-ERK.MED-KS-0063 |
| 11 | KEY | ERK.M.AKS-KLT-GNL-002 |
| 12 | LOCK | ERK.M.AKS-KLT-GNL-001 |
| 13 | DOOR LOCK | M.ENJ-ERK-PLS-055 |
| 14 | U PROFILE | HPR-ALM-OZL-ELO-059 |
| 15 | VENTILATION PLASTIC | M.ENJ-ERK-PLS-028 |
| 16 | COVER PANEL 1098*619 | YMH-ERK.BQ-FSM-0005 |
| 17 | OUTER PIPE | YBR-ERK.BQ-KS-0013 |
| 18 | HINGE PLASTIC | YTL-ERK.BQ-KS-0011 |
| 19 | HINGE INSIDE SHEET | YSC-ERK.BQ-LZ-0172 |
| 20 | HINGE OUTER SHEET | YSC-ERK.BQ-LZ-0171 |
| 21 | HEAT TRANSFER PLASTIC | M.ENJ-ERK-PLS-134 |
| 22 | HOT COVER | ARA-ERK.BQ-0017 |
| 23 | THERMOSTAT | ERK.M.ELK-EDM-DGT-007 |
| 24 | PANEL SIDE COVER | M.MUH-071 |
| 25 | PANEL SHEET | YSC-ERK.BQ-LZ-0157 |
| 26 | BALCONY PIPE | ARA-ERK.BQ-0040 |

HEAT BANQUET TROLLEY

G SPARE PART LIST-EXPLODING DRAWING



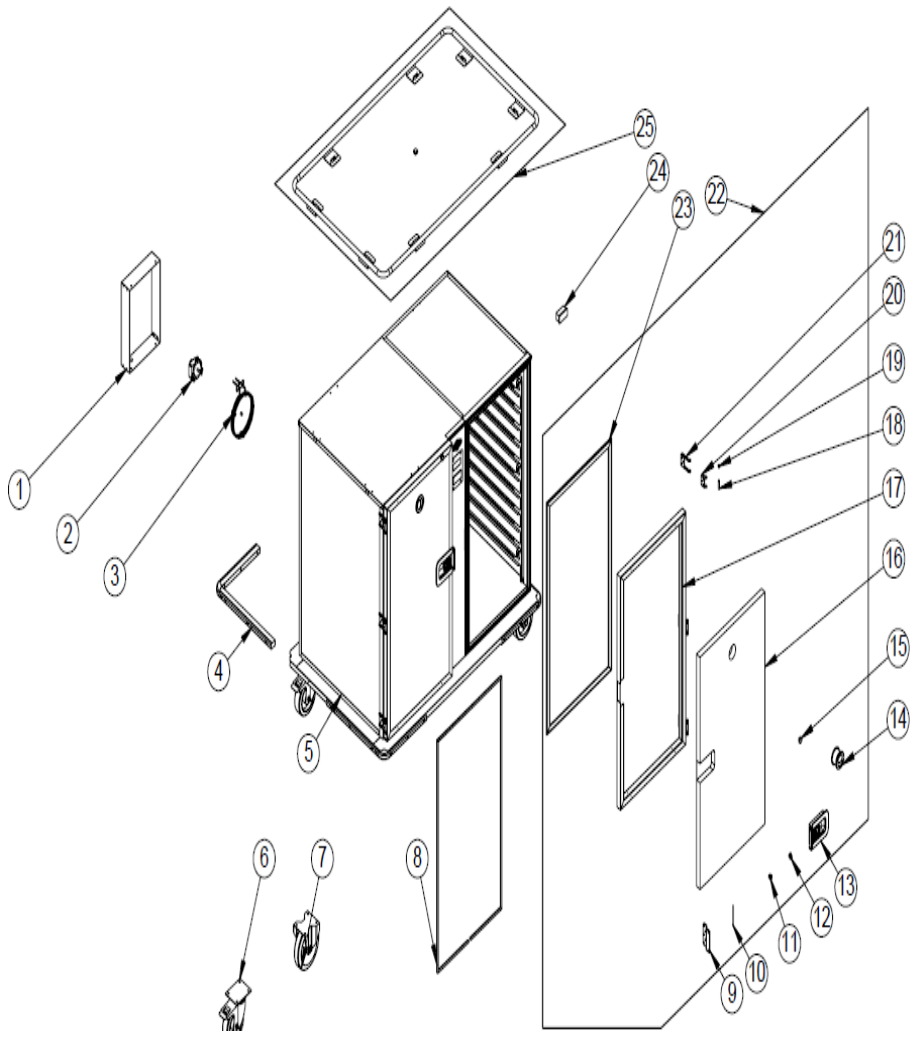
EMP.BQ1-12+12H

G SPARE PART LIST-EXPLODING DRAWING

| PRODUCT CODE: EMP. BQ1-12+12H | | |
|-------------------------------|-----------------------|-------------------------|
| NO | PRODUCT NAME | P.CODE |
| 1 | ENGINE COVER SHEET | YSC-ERK.BQ-LZ-0169 |
| 2 | FAN MOTOR | ERK.M.ELK-MTR-FMT-004 |
| 3 | RESISTANCE | M.ELK-RKR-BRU-ERK-001 |
| 4 | BUMPER RUBBER | M.ENJ-ERK-PLS-056 |
| 5 | WHEEL WITHOUT BRAKE | M.AKS-TKR-KS-013 |
| 6 | WHEEL WITH BRAKE | M.AKS-TKR-KS-003 |
| 7 | GASKET | M.CNT-ERK-060 |
| 8 | LOCK MATTER SHEET | YSC-ERK.BQ-PN-0346 |
| 9 | DOOR LOCK SHAFT | ERK.YTL-ERK.MED-KS-0063 |
| 10 | KEY | ERK.M.AKS-KLT-GNL-002 |
| 11 | LOCK | ERK.M.AKS-KLT-GNL-001 |
| 12 | DOOR LOCK | M.ENJ-ERK-PLS-055 |
| 13 | VENTILATION PLASTIC | M.ENJ-ERK-PLS-028 |
| 14 | COVER | ARA-ERK.BQ-0016 |
| 15 | U PROFILE | HPR-ALM-OZL-ELO-059 |
| 16 | COVER PANEL 1098*414 | YMH-ERK.BQ-FSM-0015 |
| 17 | HINGE PLASTIC | YTL-ERK.BQ-KS-0011 |
| 18 | OUTER PIPE | YBR-ERK.BQ-KS-0013 |
| 19 | HINGE INSIDE SHEET | YSC-ERK.BQ-LZ-0172 |
| 20 | HINGE OUTER SHEET | YSC-ERK.BQ-LZ-0171 |
| 21 | HEAT TRANSFER PLASTIC | M.ENJ-ERK-PLS-134 |
| 22 | CHASSIS | - |
| 23 | THERMOSTAT | ERK.M.ELK-EDM-DGT-007 |
| 24 | BALCONY PIPE | ARA-ERK.BQ-0038 |

HEAT BANQUET TROLLEY

G SPARE PART LIST-EXPLODING DRAWING



EMP.BQ2-12+12H

G SPARE PART LIST-EXPLODING DRAWING

| PRODUCT CODE: EMP. BQ2-12+12H | | |
|-------------------------------|-----------------------|-------------------------|
| NO | PRODUCT NAME | P.CODE |
| 1 | ENGINE COVER SHEET | YSC-ERK.BQ-LZ-0169 |
| 2 | FAN MOTOR | ERK.M.ELK-MTR-FMT-004 |
| 3 | RESISTANCE | M.ELK-RKR-BRU-ERK-001 |
| 4 | BUMPER RUBBER | M.ENJ-ERK-PLS-056 |
| 5 | CHASSIS | - |
| 6 | WHEEL WITH BRAKE | M.AKS-TKR-KS-003 |
| 7 | WHEEL WITHOUT BRAKE | M.AKS-TKR-KS-013 |
| 8 | GASKET | M.CNT-ERK-060 |
| 9 | LOCK MATTER SHEET | YSC-ERK.BQ-PN-0346 |
| 10 | DOOR LOCK SHAFT | ERK.YTL-ERK.MED-KS-0063 |
| 11 | KEY | ERK.M.AKS-KLT-GNL-002 |
| 12 | LOCK | ERK.M.AKS-KLT-GNL-001 |
| 13 | DOOR LOCK | M.ENJ-ERK-PLS-055 |
| 14 | VENTILATION PLASTIC | M.ENJ-ERK-PLS-028 |
| 15 | MAGNET | M.MIK-ERK-003 |
| 16 | COVER PANEL 1098*619 | YMH-ERK.BQ-FSM-0005 |
| 17 | U PROFILE | HPR-ALM-OZL-ELO-059 |
| 18 | OUTER PIPE | YBR-ERK.BQ-KS-0013 |
| 19 | HINGE PLASTIC | YTL-ERK.BQ-KS-0011 |
| 20 | HINGE INSIDE SHEET | YSC-ERK.BQ-LZ-0172 |
| 21 | HINGE OUTER SHEET | YSC-ERK.BQ-LZ-0171 |
| 22 | HOT COVER | ARA-ERK.BQ-0017 |
| 23 | HEAT TRANSFER PLASTIC | M.ENJ-ERK-PLS-134 |
| 24 | THERMOSTAT | ERK.M.ELK-EDM-DGT-007 |
| 25 | BALCONY PIPE | ARA-ERK.BQ-0039 |

HEAT BANQUET TROLLEY

H ELECTRIC CIRCUIT SCHEMA

