

COLD BANQUET TROLLEY

CONTENTS

A	GENERAL INFORMATION	Page 2
A1	PRODUCT DESCRIPTION	Page 3
A2	TECHNICAL INFORMATION	Page 3
A3	TRANSPORTATION	Page 4
A4	UNPACKING	Page 4
B	INSTALLATION	Page 4
C	SAFETY INSTRUCTIONS	Page 5
D	OPERATION	Page 6
E	CLEANING & MAINTENANCE	Page 7
F	TROUBLESHOOTING.....	Page 8
G	SPARE PART LIST- EXPLODING DRAWING	Page 9
H	ELECTRIC CIRCUIT SCHEMA	Page 17

A GENERAL INFORMATION

Before installing the appliance, read operation and maintenance instructions carefully. Wrong installation and part changing may damage the product or may cause injury on people. These are not in our company's responsibility to damage the appliance intentionally, negligence, detriments because of disobeying instructions and regulations, wrong connections. Unauthorized intervention to appliance invalidates the warranty.

1. This instruction manual should be kept in a safe place for future reference.
2. **Installation should be made in accordance with ordinances and security rules of that country by a qualified service personnel.**
3. This appliance has to be used by trained person.
4. Please turn off the appliance immediately in the event of malfunction or failure. The appliance should be repaired only by authorized service personnel. Please demand original spare part.

COLD BANQUET TROLLEY

A1 PRODUCT DESCRIPTION

*The Professional Cold Banquet Trolley, that provides high efficiency has been designed to be used in industrial kitchens.

Product Code	Dimensions (mm)	Weight (kg)	Packaging Dimensions (mm)
EMP.BQ1-S	716x888x1835	131	700x900x1980
EMP.BQ2-S	1350x888x1835	225	1400x900x1830
EMP.BQ3-S	716x888x1251	102	700x900x1430
EMP.BQ4-S	581x769x1683	107	600x800x1850

A2 TECHNICAL INFORMATION

Product Code	Operating Temperature (°C)	Capacity	Power (KW)	Operat. Volt. (V)	Isolation type	Cooler Gas	Cable (mm ²)
EMP.BQ1-S	+0 / +5 Tropical 43	11xGN2/1	0,35	220- 230	40 kg/m ³ polyurethane	R-290 130gr	3x2,5
EMP.BQ2-S	+0 / +5 Tropical 43	2x(11xGN2/ 1)	0,7	220- 230	40 kg/m ³ polyurethane	R-290 140gr	3x2,5
EMP.BQ3-S	+0 / +5 Tropical 43	6xGN2/1	0,35	220- 230	40 kg/m ³ polyurethane	R-290 120gr	3x2,5
EMP.BQ4-S	+0 / +5 Tropical 43	15xGN1/1	0,35	220- 230	40 kg/m ³ polyurethane	R-290 70gr	3x2,5

A3 TRANSPORTATION

*This appliance can not be moved by hand from area to area.It must be moved on pallet with forklift truck.

A4 UNPACKING

*Please unpack the package according to the security codes and ordinances of current country and get rid from the pack.Parts which contacts with food are produced by stainless steel.All plastic parts are marked by material's symbol.

*Please check that all the parts of appliance had come completely and if they are damaged or not during the shipping.

B INSTALLATION

*Please place the product to straight and sturdy ground,please take necessary steps against possibility of overturn.

*Technician who will serve for installation and service for the appliance must be professional on this subject and must have installation and service licenses by the company.

*Connection to Electric Power Supply must be done by authorized person.

*Please be sure that the voltage connected to appliance must be equal with the voltage which is on appliance's label.













This appliance must be connected to an earthed outlet in accordance with safety rules and standards.

*Appliance's earthing must be connected to earthing line on panel which is nearest to electric installation.

*Connection to the main fuse and leak current fuse must be done in accordance with the current regulations.

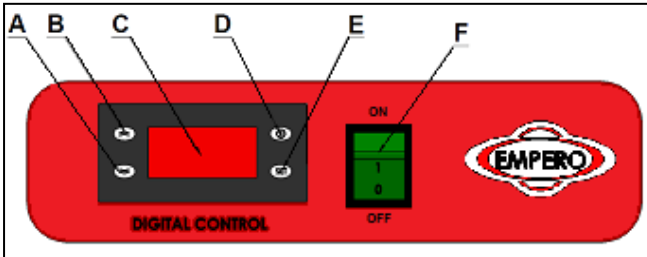
COLD BANQUET TROLLEY

C SAFETY INSTRUCTIONS

-  *Do not use the appliance in insufficient lighted place.
-  *Do not touch the moving attachments while the appliance operates.
-  *Do not install the appliance in the presence of flammable or explosive materials.
-  *Do not operate the appliance when the machine is empty.
-  *Do not load so less or more than appliance's capacity.
-  *Do not attempt to use the appliance without suitable protective equipments.
-  *Because of any reason if there is a fire or flame flare where the appliance is used, turn off all gas valves and electric contactor switch quickly and use fire extinguisher. Never use water to extinguish the fire.
-  *All the damages because of not having earthing connection will not be on warranty.
-  *Get the necessary cautions against electric danger.
-  *Do not leave the door open while moving the banquet trolley. It may be dangerous to move the door without control. Unplug and leave the plug on the trolley.

D OPERATION

*Control Panel;



- A : Down Arrow Button
- B : Up Arrow Button
- C : Digital Screen
- D : Program Setting Button
- E : Menu Button
- F : ON/OFF Button

*Operating;

- Be sure that the inside of the trolley is clean and the trolley is constant to where it is before starting any process.
- Plug in the appliance.
- Switch to ON position.
- After Indicator lamps signal, inside temperature will be shown.
- For temperature setting; press set button of upper indicator. Temperature that is adjusted before will be seen on the screen.
- With direct buttons (∇ - \triangle) set the desired temperature.
- Press Set button again.
- Inner temperature will be seen on the screen again. It means adjusted temperature was saved to memory.
- You can fill the banquet trolley during cooling process. In this situation cooling time will be a little bit longer.
- After Cooling Starts ;
 - Switch to OFF position. All lamps will be off.
- Unplug it and leave the plug on the trolley.

COLD BANQUET TROLLEY

E CLEANING & MAINTENANCE

➤ **CLEANING AND MAINTENANCE AFTER EVERY USE**

- Always turn off the appliance and disconnect from the power supply before cleaning.
- Clean the inside of appliance after every use.
- Clean the inside and outside of the appliance with moist cloth and then dry.
- Do not use abrasive cleaning chemicals as these can leave harmful residues.
- Do not clean the appliance by spraying water directly, otherwise electric motor may get damaged.

➤ **PERIODIC CLEANING AND MAINTENANCE**

- Maintenance should be done by qualified person.
- Get the periodic maintenance of the appliance once in every 15 days.
- Check the wheels, electric connections, fan, control system, door and door lock once in every 6 months.
- Check the door wick in periodic time and set. Change the wicks that can not be used.

F TROUBLESHOOTING

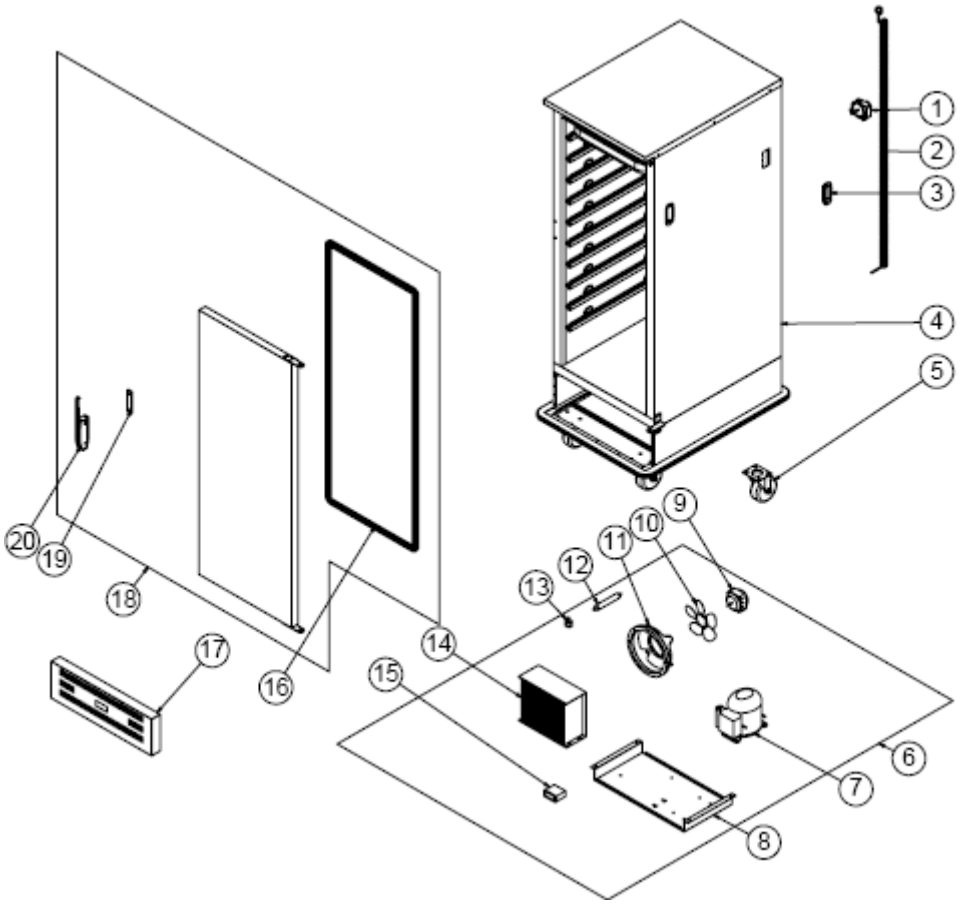
THE APPLIANCE DOESN'T OPERATE	<ol style="list-style-type: none">1. Check if the appliance is plugged in.2. Check the electrical connections and voltage.
THE APPLIANCE DOESN'T COOL	<ol style="list-style-type: none">1. Check if the thermostat control panel operates or not.2. Fan may have error. In this situation inform the service.3. If the control system has error, the appliance doesn't cool.
THE APPLIANCE STOPPED	<ol style="list-style-type: none">1. The appliance can stop due to low voltage. In this situation check the voltage.2. If there is any load on banquet trolley, the appliance may stop.
THE BRAKES CAN NOT BE APPLIED	<ol style="list-style-type: none">1. Brakes and Wheels may have error. In this situation inform the service.
DOOR IS NOT CLOSED	<ol style="list-style-type: none">1. The banquet trolley may be overloaded2. Door lock may have error.

- If cooling is not done at suitable quality
- If any function of security doesn't work
 - Do not use the appliance.

***If these problems are still going on, contact with our authorized services.**

COLD BANQUET TROLLEY

G SPARE PART LIST-EXPLODING DRAWING



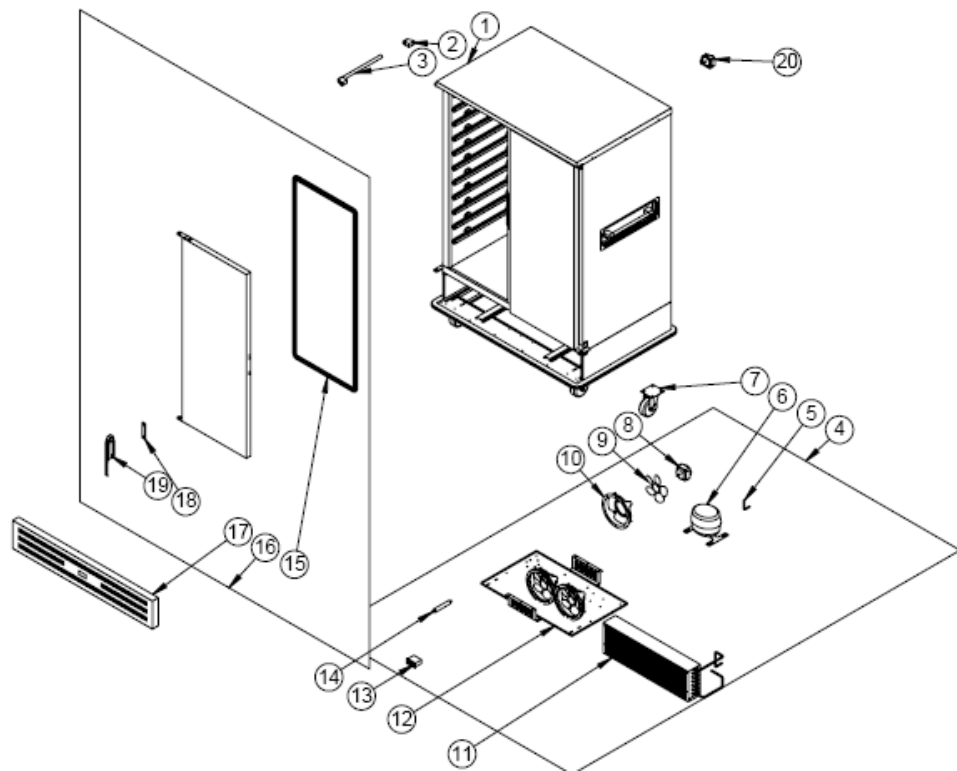
EMP.BQ1-S

G SPARE PART LIST-EXPLODING DRAWING

PRODUCT CODE: EMP.BQ1-S		
NO	PRODUCT NAME	P.CODE
1	FAN MOTOR	ERK.M.ELK-MTR-FMT-004
2	RECEIPT	ERK.M.ELK-PWR-PBK-004
3	DRAWER HANDLE PLASTIC	M.ENJ-ERK-PLS-023
4	CHASSIS	-
5	WHEEL WITH BRAKE	M.AKS-TKR-KFS-002
6	COOLING GROUP	ARA-ERK.BQ1-S-0001
7	COMPRESSOR	M.SOG-KMS-018
8	ENGINE GROUP SHEET	YSC-ERK.BQ-PN-0062
9	FAN MOTOR	M.ELK-MTR-FMT-014
10	WING	M.ELK-HVL-FKN-004
11	FAN CIRCLE PLASTIC	M.ENJ-ERK-PLS-001
12	DRAYER	M.SOG-DRY-004
13	HANDCUFF	M.PLS-ERK-003
14	CONDENSER	M.SOG-KDS-004
15	THERMOSTAT	M.ELK-EDM-DGT-043
16	GASKET	M.CNT-ERK-012
17	PANEL SHEET	YSC-ERK.BQ-PN-0063
19	COVER	ARA-ERK.BQ-0024
20	HANDLE NAIL EXTENSION SHEET	YSC-ERK.BQ-LZ-0046

COLD BANQUET TROLLEY

G SPARE PART LIST-EXPLODING DRAWING



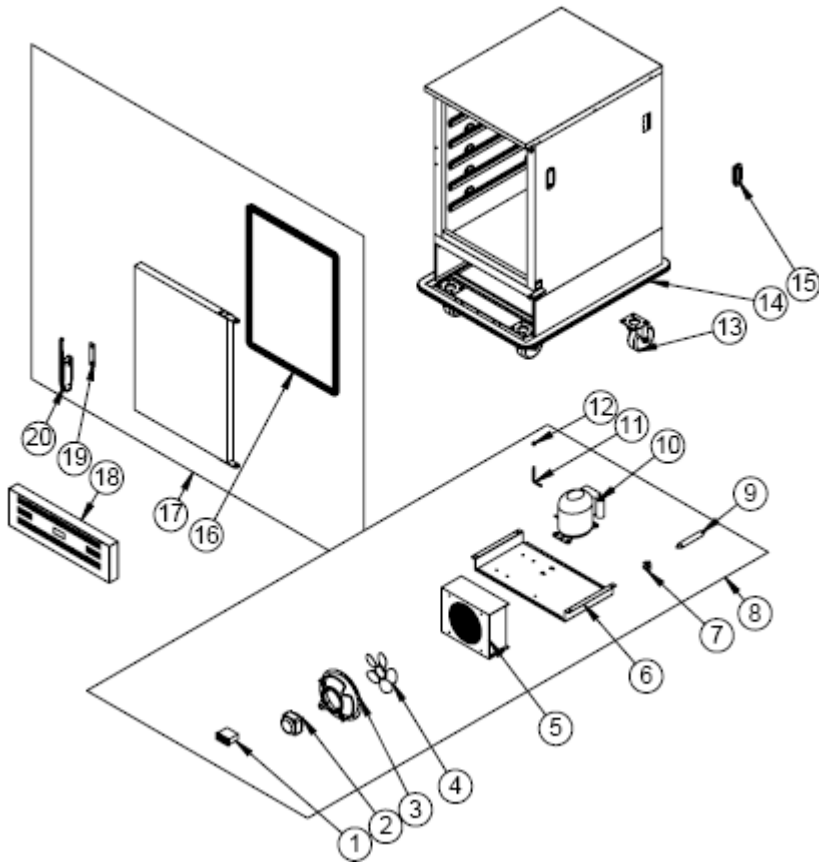
EMP.BQ2-S

G SPARE PART LIST-EXPLODING DRAWING

PRODUCT CODE: EMP.BQ2-S		
NO	PRODUCT NAME	P.CODE
1	CHASSIS	-
2	HANDLE SIDE PART	M.ENJ-ERK-PLS-019
3	HANDLE PIPE DIAMETER 20mm	YBR-ERK.BQ-KS-0001
4	COOLING GROUP	ARA-ERK.BQ2-S-0001
5	COPPER PIPE	HGZ-BR-BK-8*1
6	COMPRESSOR	M.SOG-KMS-007
7	WHEEL WITHOUT BRAKE	M.AKS-TKR-KS-002
8	FAN MOTOR	M.ELK-MTR-FMT-014
9	WING	M.ELK-HVL-FKN-002
10	FAN CIRCLE PLASTIC	M.ENJ-ERK-PLS-001
11	CONDENSER POSITIVE (+)	M.SOG-KDS-032
12	ENGINE GROUP SHEET	YSC-ERK.1560-LZ-0039
13	THERMOSTAT	M.ELK-EDM-DGT-043
14	DRAYER	M.SOG-DRY-004
15	GASKET	M.CNT-ERK-012
16	COVER	ARA-ERK.BQ-0024
17	ENGINE GROUP SHEET	YSC-ERK.BQ-PN-0158
28	HANDLE NAIL EXTENSION SHEET	YSC-ERK.BQ-LZ-0046
19	MAGNET LOCK	M.AKS-KLT-GNL
20	FAN MOTOR	ERK.M.ELK-MTR-FMT-004

COLD BANQUET TROLLEY

G SPARE PART LIST-EXPLODING DRAWING



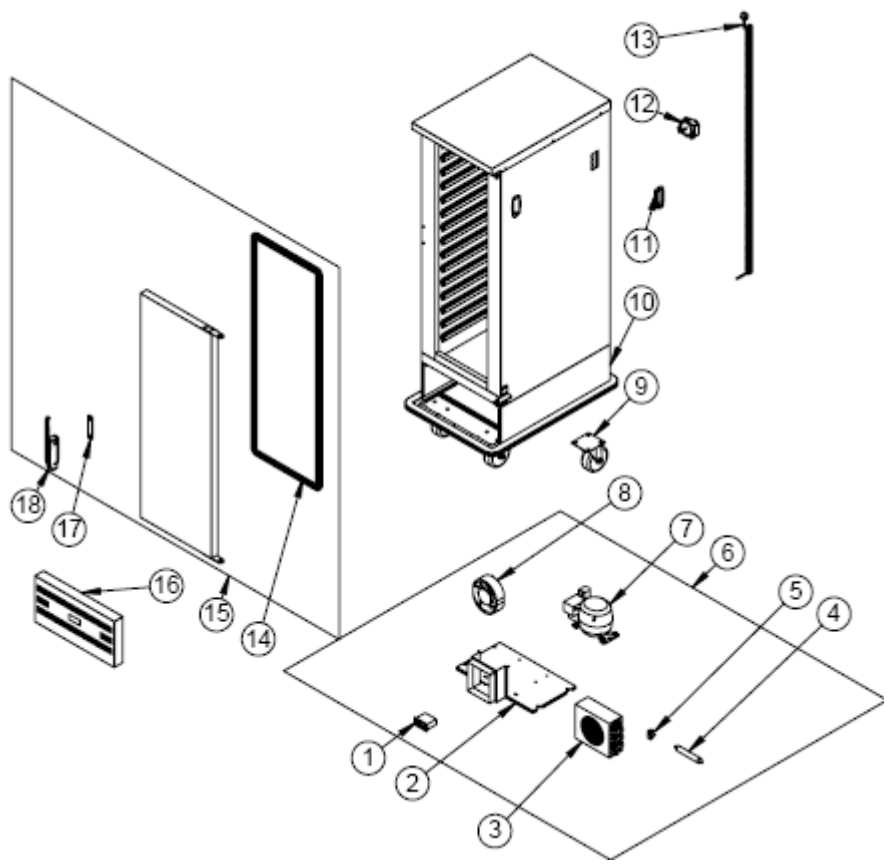
EMP.BQ3-S

G SPARE PART LIST-EXPLODING DRAWING

PRODUCT CODE: EMP.BQ3-S		
NO	PRODUCT NAME	P.CODE
1	THERMOSTAT	M.ELK-EDM-DGT-043
2	FAN MOTOR	M.ELK-MTR-FMT-014
3	FAN CIRCLE PLASTIC	M.ENJ-ERK-PLS-001
4	WING	M.ELK-HVL-FKN-004
5	CONDENSER	M.SOG-KDS-004
6	ENGINE GROUP SHEET	YSC-ERK.BQ-PN-0062
7	HANDCUFF	M.PLS-ERK-003
8	COOLING GROUP	ARA-ERK.BQ1-S-0001
9	DRAYER	M.SOG-DRY-004
10	COMPRESSOR	M.SOG-KMS-018
11	COPPER PIPE	HGZ-BR-BK-8*1
12	SIBO	M.SOG-MUH-001
13	WHEEL WITH BRAKE	M.AKS-TKR-KFS-002
14	CHASSIS	-
15	DRAWER HANDLE PLASTIC	M.ENJ-ERK-PLS-023
16	GASKET	M.CNT-ERK-013
17	COVER	ARA-ERK.BQ-0025
18	PANEL SHEET	YSC-ERK.BQ-PN-0063
19	HANDLE NAIL EXTENSION SHEET	YSC-ERK.BQ-LZ-0046
20	MAGNET LOCK	M.AKS-KLT-GNL

COLD BANQUET TROLLEY

G SPARE PART LIST-EXPLODING DRAWING



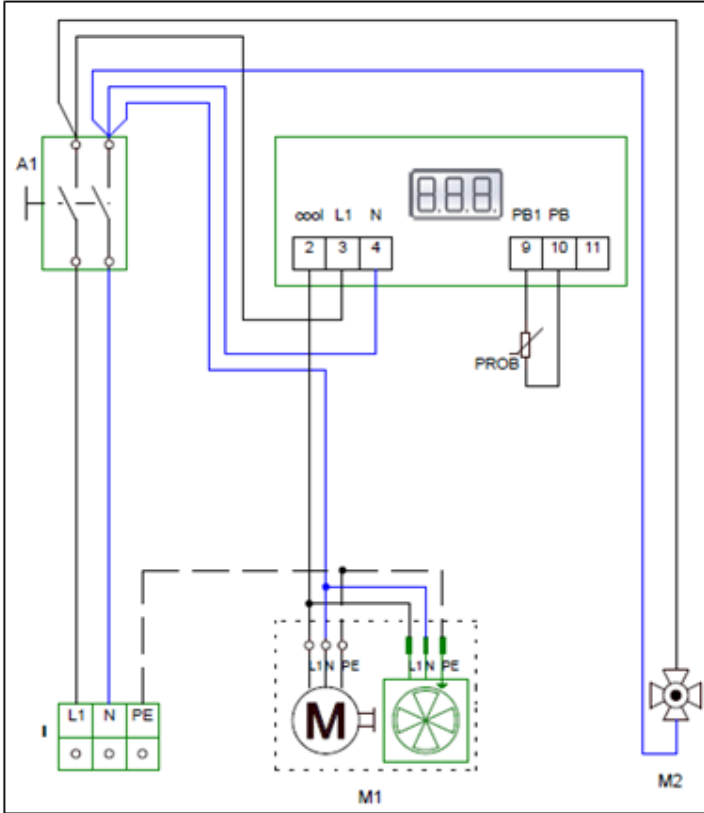
EMP.BQ4-S

G SPARE PART LIST-EXPLODING DRAWING

PRODUCT CODE: EMP.BQ4-S		
NO	PRODUCT NAME	P.CODE
1	THERMOSTAT	M.ELK-EDM-DGT-043
2	ENGINE GROUP SHEET	YSC-ERK.BQ-PN-0158
3	1/5 CONDENSER	M.SOG-KDS-006
4	DRAYER	M.SOG-DRY-004
5	HANDCUFF	M.PLS-ERK-003
6	COOLING GROUP	ARA-ERK-EMP.BQ4S
7	COMPRESSOR	M.SOG-KMS-006
8	FAN	ERK.M.ELK-HVL-KFN-001
9	WHEEL WITH BRAKE	M.AKS-TKR-KFS-002
10	CHASSIS	-
11	DRAWER HANDLE PLASTIC	M.ENJ-ERK-PLS-023
12	FAN MOTOR	ERK.M.ELK-MTR-FMT-004
13	RECEIPT	ERK.M.ELK-PWR-PBK-004
14	GASKET	M.CNT-ERK-011
15	COVER	ARA-ERK.BQ-0026
16	PANEL SHEET	YSC-ERK.BQ-PN-0156
17	HANDLE NAIL EXTENSION SHEET	YSC-ERK.BQ-LZ-0046
18	MAGNET LOCK	M.AKS-KLT-GNL

COLD BANQUET TROLLEY

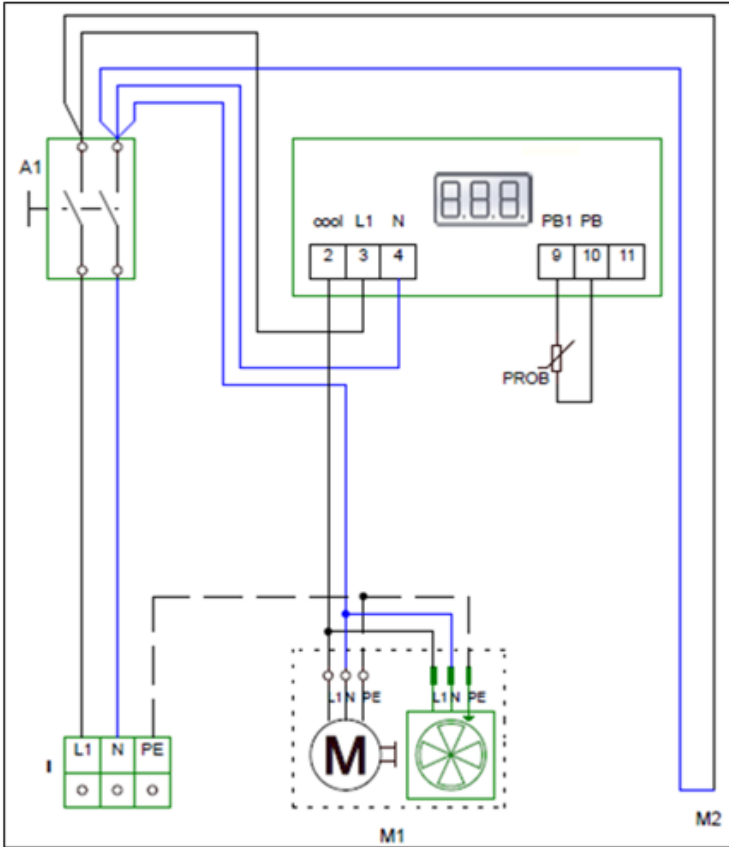
H ELECTRIC CIRCUIT SCHEMA



EMP.BQ1-S-BQ3-BQ4

I	A1	M1	M2
Terminal	Large lighted 0-1 Switch	Compressor and Condenser Fan	Inner air circulation fan

H ELECTRIC CIRCUIT SCHEMA



EMP.BQ2-S

I	A1	M1	M2
Terminal	Large lighted 0-1 Switch	Compressor and Condenser Fan	Inner air circulation fan