

MEAL SEAL MACHINE

CONTENTS

A	GENEERAL INFORMATION.....	Page 2
A1	PRODUCT DESCRIPTION	Page 3
A2	TECHNICAL INFORMATION	Page 3
A3	TRANSPORTATION	Page 4
A4	UNPACKING	Page 4
B	INSTALLATION	Page 4
C	SAFETY INSTRUCTIONS	Page 5
D	OPERATION	Page 6
E	CLEANING & MAINTENANCE.....	Page 7
F	TROUBLESHOOTING	Page 8
G	SPARE PART LIST- EXPLODING DRAWINGS	Page 9
H	ELECTRIC CIRCUIT SCHEMA	Page 13

A GENERAL INFORMATION

Before installing the appliance, read operation and maintenance instructions carefully. Wrong installation and part changing may damage the product or may cause injury on people. These are not in our company's responsibility to damage the appliance intentionally, negligence, detriments because of disobeying instructions and regulations, wrong connections. Unauthorized intervention to appliance invalidates the warranty.

1. This instruction manual should be kept in a safe place for future reference.
2. **Installation should be made in accordance with ordinances and security rules of that country by a qualified service personnel.**
3. This appliance has to be used by trained person.
4. Please turn off the appliance immediately in the event of malfunction or failure. The appliance should be repaired only by authorized service personnel. Please demand original spare part.

MEAL SEAL MACHINE

A1 PRODUCT DESCRIPTION

*Professional Meal Seal Machine, that provides high efficiency has been designed to be used in industrial kitchens.

Product Code	Dimensions (mm)	Weight (kg)	Packaging Dimensions (mm)
EMP.TKM.01	320x650x310	18	350x700x340
EMP.TKM.02	330x650x310	18	350x700x340

A2 TECHNICAL INFORMATION

Product Code	Film Capacity (mm)	Seal Dimensions (mm)	Power (Kw)	Operating Voltage (V)	Cable (mm ²)	Fuse (A)
EMP.TKM.01	Max.245	270x250	1	220	3x1,5	10
EMP.TKM.02	Max.245	270x250	1	220	3x1,5	10

Film thickness (mm)	220
---------------------	-----

A3 TRANSPORTATION

*This appliance can be moved by hand from area to area. Do not crash and drop the appliance while transporting.

A4 UNPACKING

*Please unpack the package according to the security codes and ordinances of current country and get rid from the pack. Parts which contacts with food are produced by stainless steel. All plastic parts are marked by material's symbol.

*Please check that all the parts of appliance had come completely and if they are damaged or not during the shipping.

B INSTALLATION

*Please place the product to straight and sturdy ground, please take necessary steps against possibility of overturn.

*Technician who will serve for installation and service for the appliance must be professional on this subject and must have installation and service licenses by the company.

*Connection to Electric Power Supply must be done by authorized person.

*Please be sure that the voltage connected to appliance must be equal with the voltage which is on appliance's label.











This appliance must be connected to an earthed outlet in accordance with safety rules and standards.

*Appliance's earthing must be connected to earthing line on panel which is nearest to electric installation.

*Connection to the main fuse and leak current fuse must be done in accordance with the current regulations.

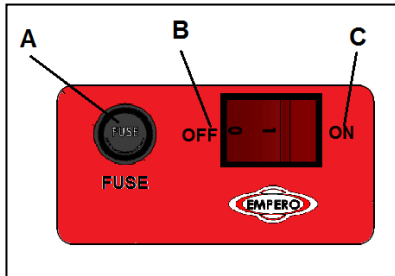
MEAL SEAL MACHINE

C SAFETY INSTRUCTIONS

-  *Do not use the appliance in insufficient lighted place.
-  *Do not touch the moving attachments while the appliance operates.
-  *Do not install the appliance in the presence of flammable or explosive materials.
-  *Do not operate the appliance when the machine is empty.
-  *Get the necessary cautions against electric danger.
-  *Do not attempt to use the appliance without suitable protective equipments.
-  *Because of any reason if there is a fire or flame flare where the appliance is used, turn off all gas valves and electric contactor switch quickly and use fire extinguisher. Never use water to extinguish the fire.
-  *All the damages because of not having earthing connection will not be on warranty.

D OPERATION

*Control Panel;



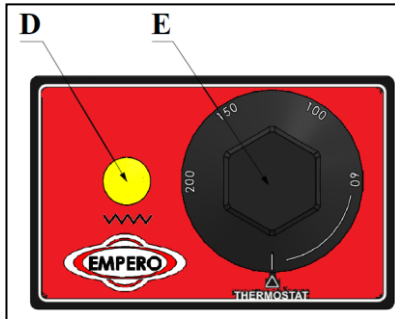
A : Fuse safety button

B : OFF position

C : ON position

D : Warning lamp

E : Thermostat



*Operating;

- Before operating the appliance, insert the equipment (aluminium etc.)
- In order to operate the appliance switch the button to ON position and adjust the suitable temperature with thermostat heat adjustment.
- Lift the lid of the appliance and insert the dish into dish mold.
- Pull the sealing material until it close the dish.
- Close the lid of the appliance and wait (2-10 sec.) according to type of sealing material.
- Lift the lid of appliance and take out the dish.
- When the operation is completed switch off and unplug the appliance.

MEAL SEAL MACHINE

E CLEANING & MAINTENANCE

➤ **CLEANING AND MAINTENANCE AFTER EVERY USE**

- Clean outer surface of appliance with hot water and then dry.
- Always turn off the appliance and disconnect from the power supply before cleaning.
- Do not use abrasive cleaning chemicals as these can leave harmful residues.
- Do not clean the appliance by spraying water directly, otherwise electrical part may get damaged.

➤ **PERIODIC CLEANING AND MAINTENANCE**

- Maintenance should be done by qualified person.
- Get the periodic maintenance of the appliance once in every 15 days.
- Check that if the power cable has error or not. If there is error at the cable, definitely do not use the appliance. Provide the cable to be changed by authorized technic service.

F TROUBLESHOOTING

THE APPLIANCE DOESN'T OPERATE

1. Check if the appliance is plugged in.
2. Check the electrical connections and voltage.
3. Adjust the thermostat heat.

IF SEALING IS NOT DONE AT SUITABLE QUALITY

1. Check the thermostat settings.
2. According to type of sealing material define the time of sticking time.
3. Use suitable material for dish mold.

THE APPLIANCE STOPPED

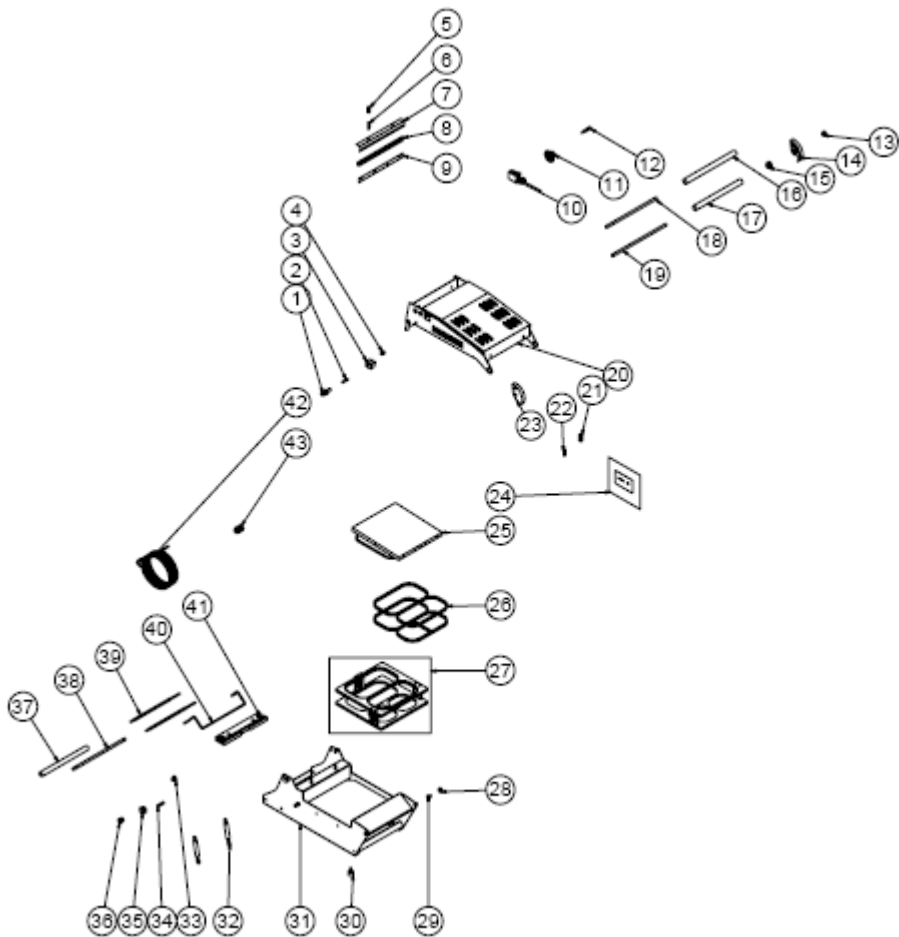
1. The appliance can stop due to low voltage. In this situation check the voltage.
2. Check the resistances.

- If meal seal is not done at suitable quality
- If any function of security doesn't work
 - Do not use the appliance.

***If these problems are still going on, contact with our authorized service.**

MEAL SEAL MACHINE

G SPARE PART LIST- EXPLODING DRAWINGS



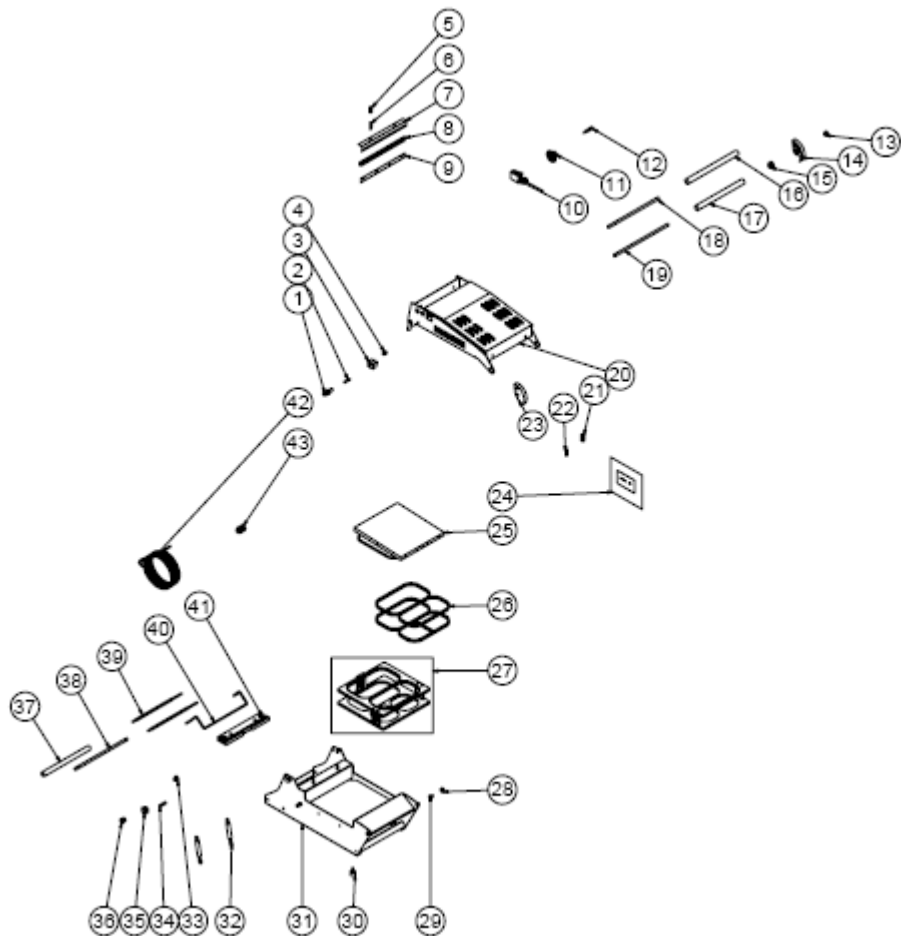
EMP.TKM.01

G SPARE PART LIST- EXPLODING DRAWINGS

PRODUCT CODE: EMP.TKM.01		
NO	PRODUCT NAME	P.CODE
1	INSURANCE	ERS.M.MUH-010
2	GLASS FUSE 15 A	ERS.M.ELK-SGR-003
3	RED LIGHT KEY	ERS.M.ELK-SLT-ANL-003
4	PISTON TOP PIN	YTL-ERS.TKM-KS-0008
5	SPRING	ERS.M.YAY-ERS-020
6	KNIFE PIN	YTL-ERS.TKM-KS-0006
7	BLADE SHEET	YSC-ERS.TKM-LZ-0012
8	CONNECTION ALUMINUM	YMH-ERS.TKM-CN-0006
9	KNIFE	M.BCK-TKM-001
10	THERMOSTAT 60-200 °C	M.ELK-MEK-TRM1-010
11	60-200 °C THERMOSTAT BUTTON	M.AKS-DGM-MUH-007
12	YELLOW WARNING LAMP	ERS.M.ELK-LMB-SNY-003
13	LATCH SMALL PLASTIC	YTL-ERS.TKM-KS-0011
14	RIGHT LATCH	YMH-ERS.TKM-CN-0004
15	LATCH LARGE PLASTIC	YTL-ERS.TKM-KS-0010
16	FRONT PIPE	YBR-ERS.TKM-KS-0001
17	REAR PIPE	YBR-ERS.TKM-KS-0002
18	HANDLE FRONT SHAFT	YTL-ERS.TKM-KS-0001
19	HANDLE REAR SHAFT	YTL-ERS.TKM-KS-0002
20	UPPER CHASSIS	-
21	SPRING	M.YAY-ERS-021
22	RESISTANCE PIPE	YBR-ERS.TKM-KS-0004
23	LEFT LATCH	YMH-ERS.TKM-CN-0005
24	CABLE BACKET	M.ELK-KD-TKM-001
25	CASTING RESISTANCE	ERS.M.ELK-RZS-OZL-005
26	SUPPOSITORY	HCN-LAS-ERS-004
27	STANDARD MOLD	ARA-ERS.TKM-0001
28	BEARING (S 607 RS)	M.RLM-NRM-037
29	LATCH PIN	YTL-ERS.TKM-KS-0009
30	LOWER STRUT RUBBER	M.ENJ-ERS-LST-011
31	LOWER CHASSIS	-
32	SHOCK ABSORBER	M.MUH-043
33	HINGEBUSH	YTL-ERS.TKM-KS-0012
34	ROLLER SPRING	M.YAY-ERS-022
35	ROLLER BUSH	YTL-ERS.TKM-KS-0013
36	BUSH	YTL-ERS.TKM-KS-0015
37	ROLLER PIPE	YBR-ERS.TKM-KS-0003
38	HINGE SHAFT	YTL-ERS.TKM-KS-0003
39	ROLLER SHAFT	YTL-ERS.TKM-KS-0004
40	TENSIONING SHAFT	YTL-ERS.TKM-KS-0005
41	CUT ALUMINUM	YLS-ERS.TKM-KS-0001
42	3*1,5 CABLE	M.ELK-PWR-PBK-003
43	PG-11 CABLE FITTING	ERS.M.ELK-RKR-PLS-003

MEAL SEAL MACHINE

G SPARE PART LIST- EXPLODING DRAWINGS



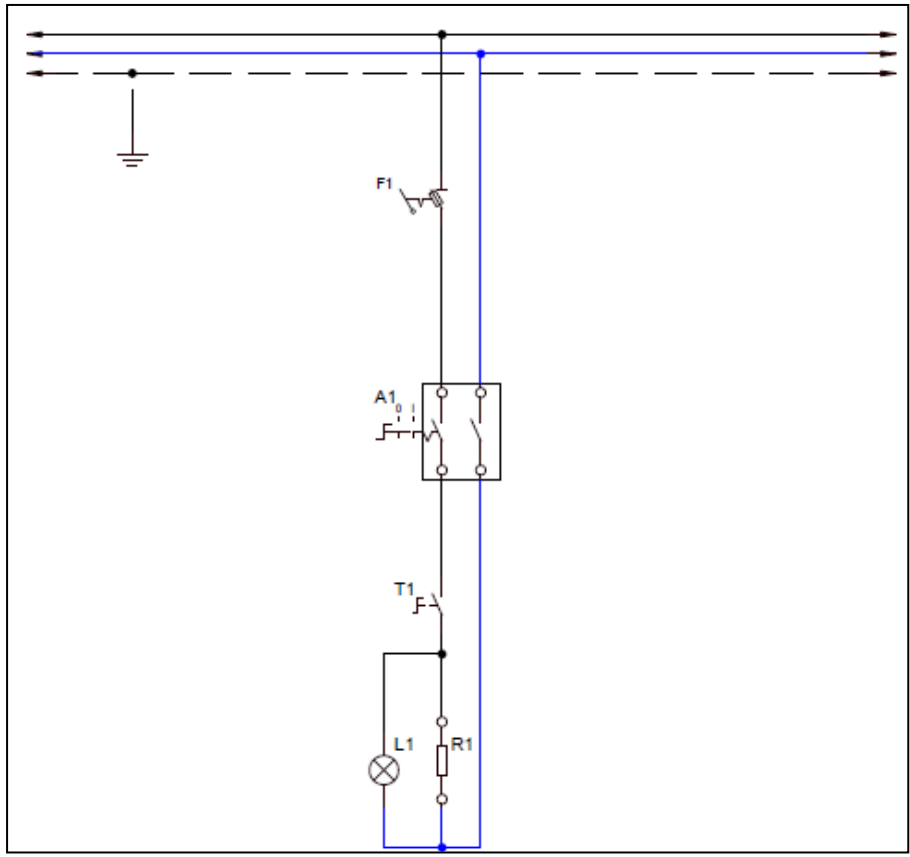
EMP.TKM.02

G SPARE PART LIST- EXPLODING DRAWINGS

PRODUCT CODE: EMP.TKM.02		
NO	PRODUCT NAME	P.CODE
1	INSURANCE	ERS.M.MUH-010
2	GLASS FUSE 15 A	ERS.M.ELK-SGR-003
3	RED LIGHT KEY	ERS.M.ELK-SLT-ANL-003
4	PISTON TOP PIN	YTL-ERS.TKM-KS-0008
5	SPRING	ERS.M.YAY-ERS-020
6	KNIFE PIN	YTL-ERS.TKM-KS-0006
7	BLADE SHEET	YSC-ERS.TKM-LZ-0012
8	CONNECTION ALUMINUM	YMH-ERS.TKM-CN-0006
9	KNIFE	M.BCK-TKM-001
10	THERMOSTAT 60-200 °C	M.ELK-MEK-TRM1-010
11	60-200 °C THERMOSTAT BUTTON	M.AKS-DGM-MUH-007
12	YELLOW WARNING LAMP	ERS.M.ELK-LMB-SNY-003
13	LATCH SMALL PLASTIC	YTL-ERS.TKM-KS-0011
14	RIGHT LATCH	YMH-ERS.TKM-CN-0004
15	LATCH LARGE PLASTIC	YTL-ERS.TKM-KS-0010
16	FRONT PIPE	YBR-ERS.TKM-KS-0001
17	REAR PIPE	YBR-ERS.TKM-KS-0002
18	HANDLE FRONT SHAFT	YTL-ERS.TKM-KS-0001
19	HANDLE REAR SHAFT	YTL-ERS.TKM-KS-0002
20	UPPER CHASSIS	-
21	SPRING	M.YAY-ERS-021
22	RESISTANCE PIPE	YBR-ERS.TKM-KS-0004
23	LEFT LATCH	YMH-ERS.TKM-CN-0005
24	CABLE BACKET	M.ELK-KD-TKM-001
25	CASTING RESISTANCE	ERS.M.ELK-RZS-OZL-005
26	SUPPOSITORY	HCN-LAS-ERS-004
27	TURKISH MODEL MOLD	ARA-ERS.TKM-0002
28	BEARING (S 607 RS)	M.RLM-NRM-037
29	LATCH PIN	YTL-ERS.TKM-KS-0009
30	LOWER STRUT RUBBER	M.ENJ-ERS-LST-011
31	LOWER CHASSIS	-
32	SHOCK ABSORBER	M.MUH-043
33	HINGEBUSH	YTL-ERS.TKM-KS-0012
34	ROLLER SPRING	M.YAY-ERS-022
35	ROLLER BUSH	YTL-ERS.TKM-KS-0013
36	BUSH	YTL-ERS.TKM-KS-0015
37	ROLLER PIPE	YBR-ERS.TKM-KS-0003
38	HINGE SHAFT	YTL-ERS.TKM-KS-0003
39	ROLLER SHAFT	YTL-ERS.TKM-KS-0004
40	TENSIONING SHAFT	YTL-ERS.TKM-KS-0005
41	CUT ALUMINUM	YLS-ERS.TKM-KS-0001
42	3*1,5 CABLE	M.ELK-PWR-PBK-003
43	PG-11 CABLE FITTING	ERS.M.ELK-RKR-PLS-003

MEAL SEAL MACHINE

H ELECTRIC CIRCUIT SCHEMA



F1	T	R1	L1	A1
A.GLASS INSURANCE	THERMOSTAT	RESISTANCE	THERMOSTAT SIGNAL LAMP	0-1 SWITCH