

## CONTENTS

---

<b>A</b>	<b>GENEREAL INFORMATION.....</b>	<b>Page 2</b>
A1	PRODUCT DESCRIPTION .....	Page 3
A2	TECHNICAL INFORMATION .....	Page 3
A3	TRANSPORTATION .....	Page 4
A4	UNPACKING .....	Page 4
<b>B</b>	<b>INSTALLATION .....</b>	<b>Page 4</b>
<b>C</b>	<b>SAFETY INSTRUCTIONS .....</b>	<b>Page 5</b>
<b>D</b>	<b>OPERATION .....</b>	<b>Page 6</b>
<b>E</b>	<b>CLEANING &amp; MAINTENANCE.....</b>	<b>Page 9</b>
<b>F</b>	<b>TROUBLESHOOTING .....</b>	<b>Page 9</b>
<b>G</b>	<b>SPARE PART LIST- EXPLODING DRAWINGS .....</b>	<b>Page 10</b>
<b>H</b>	<b>ELECTRIC CIRCUIT SCHEMA .....</b>	<b>Page 16</b>

## A GENERAL INFORMATION

---

Before installing the appliance, read operation and maintenance instructions carefully. Wrong installation and part changing may damage the product or may cause injury on people. These are not in our company's responsibility to damage the appliance intentionally, negligence, detriments because of disobeying instructions and regulations, wrong connections. Unauthorized intervention to appliance invalidates the warranty.

1. This instruction manual should be kept in a safe place for future reference.
2. **Installation should be made in accordance with ordinances and security rules of that country by a qualified service personnel.**
3. This appliance has to be used by trained person.
4. Please turn off the appliance immediately in the event of malfunction or failure. The appliance should be repaired only by authorized service personnel. Please demand original spare part.

# VACUUM MACHINES

## A1 PRODUCT DESCRIPTION

\*Professional Vacuum Machine, that provides high efficiency has been designed to be used in industrial kitchens.

Product Code	Dimensions (mm)	Weight (kg)	Packaging Dimensions (mm)
<b>EMP.VCM.01</b>	360x586x433	38	470x720x600
<b>EMP.VCM.02</b>	550x596x549	62	690x600x730
<b>EMP.VCM.01-GN</b>	435x355x540	36	520x620x525

## A2 TECHNICAL INFORMATION

Code	EMP.VCM.01	EMP.VCM.01-GN	EMP.VCM.02
<b>Seal surface (mm)</b>	260x8	260x8	430x8
<b>Pump capacity (m<sup>3</sup>/h)</b>	10	10	20
<b>Power (Kw)</b>	0,4	0,4	0,9
<b>Operating Voltage (V)</b>	220	220	220
<b>Cable (mm<sup>2</sup>)</b>	3x1,5	3x1,5	3x1,5
<b>Tank Dimension (mm)</b>	270x350x70	270x350x70	460x360x120
<b>Sticking mouth dimension (mm)</b>	250	250	430

\*Vacuuming up liquids cannot be done.

---

**A3 TRANSPORTATION**

---

\*This appliance can be moved by hand from area to area. Do not crash and drop the appliance while transporting.

---

**A4 UNPACKING**

---

\*Please unpack the package according to the security codes and ordinances of current country and get rid from the pack. Parts which contacts with food are produced by stainless steel. All plastic parts are marked by material's symbol.

\*Please check that all the parts of appliance had come completely and if they are damaged or not during the shipping.

---

**B INSTALLATION**

---

\*Please place the product to straight and sturdy ground, please take necessary steps against possibility of overturn.

\*Technician who will serve for installation and service for the appliance must be professional on this subject and must have installation and service licenses by the company.

\*Connection to Electric Power Supply must be done by authorized person.

\*Please be sure that the voltage connected to appliance must be equal with the voltage which is on appliance's label.



This appliance must be connected to an earthed outlet in accordance with safety rules and standards.

\*Appliance's earthing must be connected to earthing line on panel which is nearest to electric installation.

\*Connection to the main fuse and leak current fuse must be done in accordance with the current regulations.










\*You must fill the vacuum pump with HFV-32 high-speed vacuum pump oil or 32N lubricant before use (When the machine is placed at a horizontal position, the oil level should keep at 3/4 of oil window.) When running, the oil level should not be lower than 1/2 height of oil window. Do not fill with too much oil to avoid over flow.

\*The power connection position maybe located at different side, so be sure to do grounding protection before use.

# VACUUM MACHINES

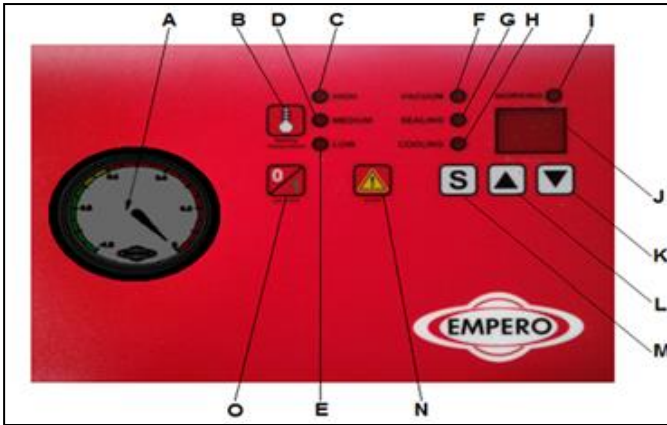
## C SAFETY INSTRUCTIONS

---

-  \*Do not use the appliance in insufficient lighted place.
-  \*Do not touch the moving attachments while the appliance operates.
-  \*Do not install the appliance in the presence of flammable or explosive materials.
-  \*Do not operate the appliance when the machine is empty.
-  \*Get the necessary cautions against electric danger.
-  \*Do not attempt to use the appliance without suitable protective equipments.
-  \*Because of any reason if there is a fire or flame flare where the appliance is used, turn off all gas valves and electric contactor switch quickly and use fire extinguisher. Never use water to extinguish the fire.
-  \*The power connection position maybe located at different side, so be sure to do grounding protection before use. All the damages because of not having earthing connection will not be on warranty.
-  \*The machine should be placed horizontally in good ventilation without corrosive gas and heavy dust.

### D OPERATION

\* Control Panel:



- A** : VACUUM INDICATOR
- B** : SEALING DEGRESS SETTING
- C** : TEMPERATURE INDICATOR LED (HIGH)
- D** : TEMPERATURE INDICATOR LED (MEDIUM)
- E** : TEMPERATURE INDICATOR LED (LOW)
- F** : VACUUM SETTING LED
- G** : SEALING SETTING LED
- H** : COOLING SETTING LED
- I** : WORKING INDICATOR LED
- J** : TIME INDICATOR SCREEN
- K** : TIME SETTING UP BUTTON
- L** : TIME SETTING DOWN BUTTON
- M** : SET BUTTON
- N** : URGENT STOP BUTTON
- O** : ON/OFF BUTTON

## VACUUM MACHINES

### \* Operating:

This machine is user friendly. From the flow chart : Close the machine cover, air exhaustion (vacuum), gas filling, heating, sealing, label printing, cooling, return-air, to the re-opening of cover, the whole processing is done automatically.

By using ON/OFF button cancel stand by mode. You will see ON mode on the screen of time indicator. When the device is ON by continuously pressing ON/OFF button you can change the mode to Stand By.

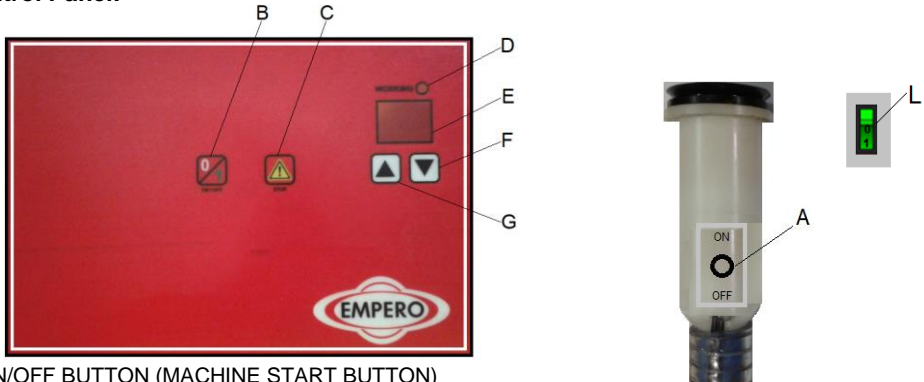
**TIME:** When it is switched on device stays at Stand By mode. When pressed SET button, vacuum led signs first and time can be set (with 1 second units spacing). After vacuum time setting you can pass to next step (sealing time set) by pressing set button and sealing led signals. At this step time can be set with 0,1 second units spacing. By pressing set button you can pas to next step (cooling time set) At this step time can be set with one 0,1 second units spacing. When you press set button again device saves data to memory and is ready to use. Even at the loss of electric connection datas are saved at memo. Time set can be made with the arrow buttons on the device.

**SEALING HEAT SET:** By pressing Sealing Heat Set button heat can be set as High, Medium, Low or no heating. Selected heating level is displayed , if not signals any of them, it means "no heating" is selected. Saves last sealing temperature level at memory. When the device is switched off and on again, saves the last set data.

**OPERATION:** When the device is set and ready to use at time display screen "ON" image is displayed. When "ON" is displayed on display screen place the packet and close the lid. When the lid is closed operation begins. In the set time period vacuum, sealing and cooling is done in turn. When the lid closed vacuum motor begins operating and vacuums the internal. With the vacuum effect the lid is closed tight. At this period vacuum and working led signals. When the time is over inflates the compression bag. And passes to Sealing step and heats in accordance with the set time and temperature and seals the package. Sealing led signals at sealing process period. Automatically passes to cooling process after sealing process at cooling period, cooling led signals. After cooling process automatically takes air into vacuum tank and the lid opens. All the leds signal at this period. The lid opens and "ON" mode is seen on time display screen and device is ready to use again. If any loss of electric happens at work period, device stays at vacuum mode and not opens the lid. When the electric is on again and begins with stand by mode lid opens automatic. At vacuum, sealing and Cooling processes working led signals. If emergency button is used device stops operation and begins taking air in.

## D OPERATION

### \* Control Panel:



- A :** ON/OFF BUTTON (MACHINE START BUTTON)  
**B :** ON/OFF BUTTON (SWITCH THE DEVICE ON AND OFF )  
**C:** URGENT STOP BUTTON  
**D:** WORKING INDICATOR LED  
**E:** TIME INDICATOR SCREEN  
**F:** TIME SETTING UP BUTTON  
**G:** TIME SETTING DOWN BUTTON  
**L :** 0-1 (CUSTOMIZATION SWITCH )

### \* Operating:

- Place the device in the plug.
- Press the ON-OFF button to start the appliance.
- Navigate with the up and down buttons on the control panel of the device and specify a vacuum time between (1 and 5) sec.
- Put the products you want to vacuum in the tub, then close the tub cover. Make sure that the valve cover on the top of the tub cover is correctly installed on the cover and the lid seal completely presses the lid
- Hold the vacuum hose of the device in such a way that air will not leak onto the valve and press the on-Off buttons to operate the device. (you can operate the device with the 0-1 switch that is on the device.)
- During vacuuming, ensure that the cover touches the container with a pressure.
- Pull the rubber cap on the lid to open the vacuum lid.
- Do not vacuum the tub for the second time. Otherwise, you can tear the tub cover from the vacuum multi-weld.
- If the hot products in the device are vacuumed, open the 3 filter water discharge valves on the side after each use and empty the water inside. Open the cover of the filter box every 15 days according to the usage intensity of the appliance, clean the filters thoroughly and change them once a year. Otherwise vacuum motor may be damaged.





# VACUUM MACHINES

## E CLEANING & MAINTENANCE

### ➤ CLEANING AND MAINTENANCE AFTER EVERY USE

- Clean outer surface of appliance with hot water and then dry.
- Always turn off the appliance and disconnect from the power supply before cleaning.
- Do not use abrasive cleaning chemicals as these can leave harmful residues.
- Do not clean the appliance by spraying water directly, otherwise electrical part may get damaged.

### ➤ PERIODIC CLEANING AND MAINTENANCE

- Maintenance should be done by qualified person.
- Get the periodic maintenance of the appliance once in every 15 days.
- Check that if the power cable has error or not. If there is error at the cable, definitely do not use the appliance. Provide the cable to be changed by authorized technic service.

## F TROUBLESHOOTING

<b>THE APPLIANCE DOESN'T OPERATE</b>	<ol style="list-style-type: none"> <li>1. Check if the appliance is plugged in.</li> <li>2. Check the electrical connections and voltage.</li> <li>3. Check the appliance's lid.</li> </ol>
--------------------------------------	---

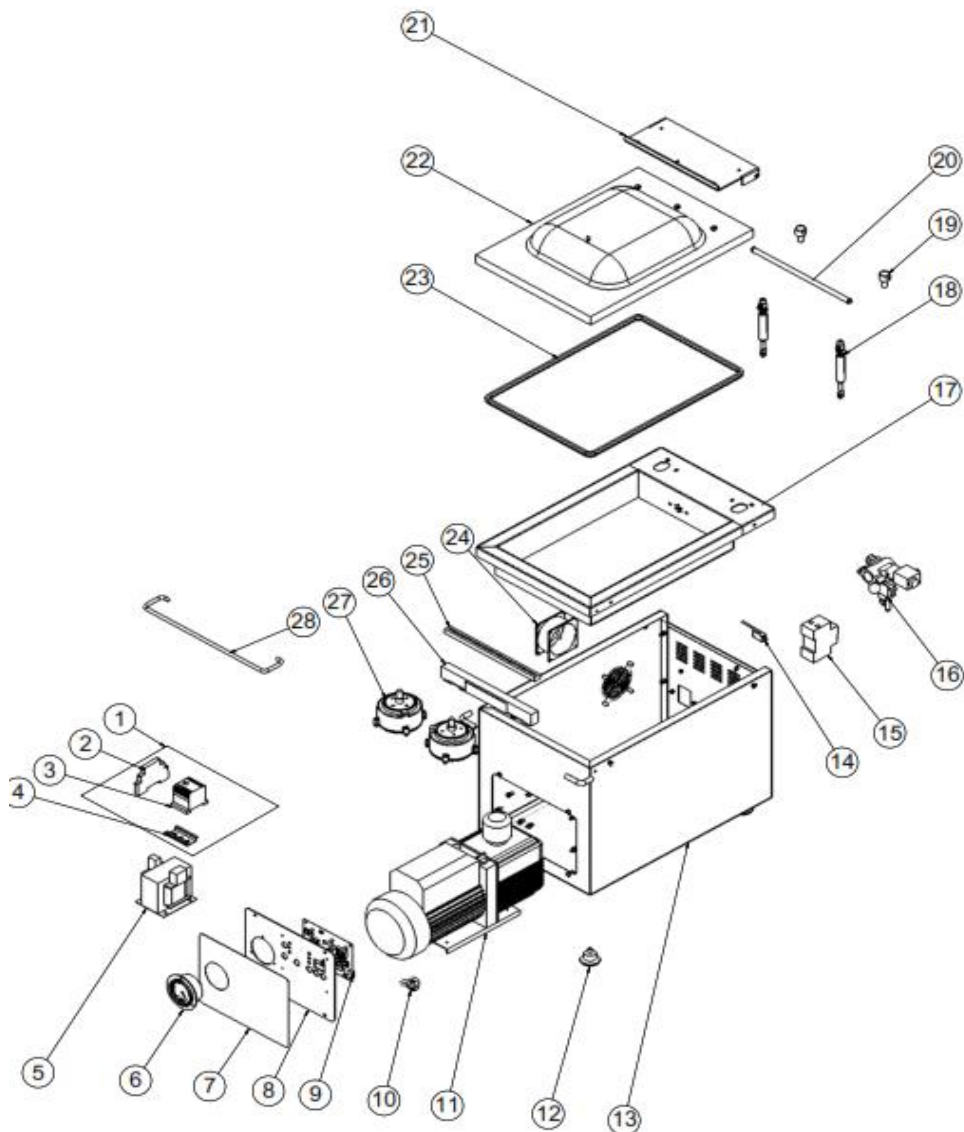
<b>NOT VACUUMING</b>	<ol style="list-style-type: none"> <li>1. Check time settings</li> <li>2. Check temperature settings</li> <li>3. Check heating element.</li> <li>4. Make sure that the valve on the cover is correctly installed.</li> <li>5. Make sure that the cover surface of the tub you want to vacuum is correct. Vacuum pump must be closed during vacuuming Check the gasket if it is not closed.</li> <li>6. If emergency stop button is pressed device stops operation. Please activate device.</li> </ol>
----------------------	---

<b>THE APPLIANCE STOPPED</b>	<ol style="list-style-type: none"> <li>1. The appliance can stop due to low voltage. In this situation check the voltage.</li> <li>2. If the motor is noisy, stop it and call authorized service</li> </ol>
------------------------------	---

<ul style="list-style-type: none"> <li>• If vacuum is not done at suitable quality,</li> <li>• If any function of security doesn't work,           <ul style="list-style-type: none"> <li>➤ Do not use the appliance.</li> </ul> </li> </ul>
--

**\*If these problems are still going on, contact with our authorized service.**

## G SPARE PART LIST- EXPLODING DRAWINGS



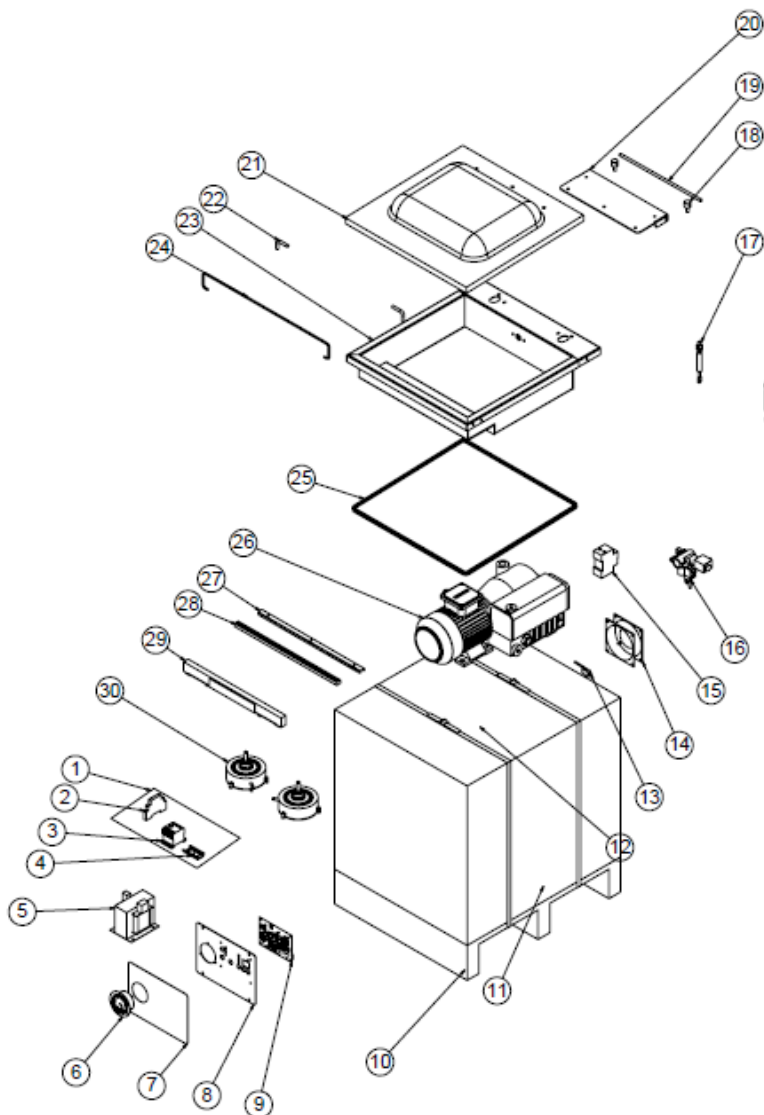
EMP.VCM.01

# VACUUM MACHINES

## G SPARE PART LIST- EXPLODING DRAWINGS

PRODUCT CODE:EMP.VCM.01		
NO	PRODUCT NAME	P.CODE
1	CABLE BACKET	M.ELK-KD-VCM-001
2	CAPACITOR	M.ELK-MUH-KPS-002
3	CONTACTOR LC1K0910M	ERS.M.ELK-KNT-KNT-021
4	AUTOMATIC RAIL	YEL-ERS.SD-KS-0003
5	TRANSFORMER	M.ELK-MUH-008
6	PRESSURE CLOCK	M.MEK-TES-BS-001
7	PANEL LABEL	M.AKS-ETK-LKS-ERS-VCM-001
8	PANEL SHEET	YSC-ERS.VCM-LZ-0003
9	DIGITAL CARD	M.ELK-EDM-VMS-013
10	MOTOR FOOT SPRING	M.YAY-ERS-027
11	VACUUM PUMP	M.ELK-MTR-PMP-010
12	FOOT	ERS.M.AKS-AYK-PLS-002
13	CHASSIS	-
14	SWITCH	ERS.M.ELK-SWC-EMAS-004
15	INSURANCE	ERS.M.ELK-SGR-007
16	SILICONE RESISTANCE 130W	M.MUH-073
17	TABLE	YSC-ERS.VCM-LZ-0005
18	SHOCK ABSORBER	M.MUH-043
19	HINGE PIN	YTL-ERS.VCM-KS-0022
20	HINGE PIN	YTL-ERS.VCM-KS-0023
21	HINGE SHEET	YSC-ERS.VCM-LZ-0032
22	COVER (482*332*22mm)	M.ENJ-ERS-FLK-036
23	SUPPOSITORY	HCN-LAS-ERS-005
24	FAN 80*82	M.ELK-HVL-KFN-010
25	LAMB WICK	HCN-LAS-ERS-006
26	RESISTANCE	M.ELK-RZS-OZL-008
27	PNEUMATIC PUMP	M.MUH-074
28	COVER LOCK SHAFT	YTL-ERS.VCM-KS-0019

## G SPARE PART LIST- EXPLODING DRAWINGS

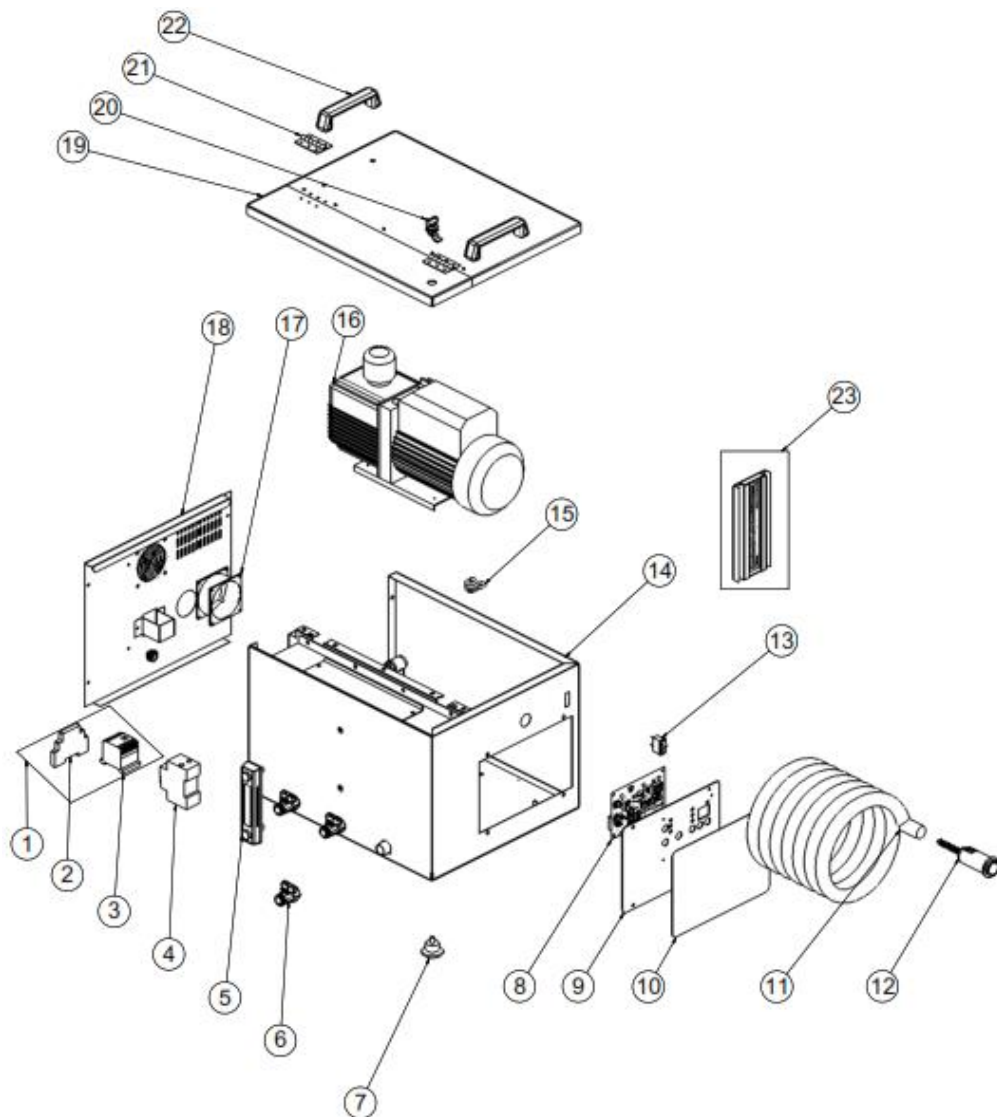


# VACUUM MACHINES

## G SPARE PART LIST- EXPLODING DRAWINGS

PRODUCT CODE:EMP.VCM.02		
NO	PRODUCT NAME	P.CODE
1	CABLE BACKET	M.ELK-KD-VCM-001
2	CAPACITOR	M.ELK-MUH-KPS-002
3	CONTACTOR LC1K0910M	ERS.M.ELK-KNT-KNT-021
4	AUTOMATIC RAIL	YEL-ERS.SD-KS-0003
5	TRANSFORMER	M.ELK-MUH-009
6	PRESSURE CLOCK	M.MEK-TES-BS-001
7	PANEL LABEL	M.AKS-ETK-LKS-ERS-VCM-001
8	PANEL SHEET	YSC-ERS.VCM-LZ-0003
9	DIGITAL CARD	M.ELK-EDM-VMS-013
10	FOOT	ERS.M.AKS-AYK-PLS-002
11	CHASSIS	-
12	MOTOR FOOT SPRING	M.YAY-ERS-027
13	SWITCH	ERS.M.ELK-SWC-EMAS-004
14	FAN 120*120	ERS.M.ELK-HVL-KFN-004
15	INSURANCE	ERS.M.ELK-SGR-009
16	SILICONE RESISTANCE 130W	M.MUH-073
17	SHOCK ABSORBER PISTON	M.MUH-076
18	HINGE PIN	YTL-ERS.VCM-KS-0022
19	HINGE PIN	YTL-ERS.VCM-KS-0024
20	HINGE SHEET	YSC-ERS.VCM-LZ-0033
21	COVER (560*520*22 mm)	M.ENJ-ERS-FLK-031
22	5/8 SILICONE HOSE	HTS-HRT-004
23	TABLE	YSC-ERS.VCM-LZ-0023
24	LOCK SHAFT	YTL-ERS.VCM-KS-0020
25	SUPPOSITORY	HCN-LAS-ERS-005
26	VACUUM PUMP	M.ELK-MTR-PMP-011
27	GASKET CONNECTION SHEET	YSC-ERS.VCM-LZ-0056
28	LAMB WICK	HCN-LAS-ERS-006
29	RESISTANCE	M.ELK-RZS-OZL-009
30	PNEUMATIC PUMP	M.MUH-075

## G SPARE PART LIST- EXPLODING DRAWINGS



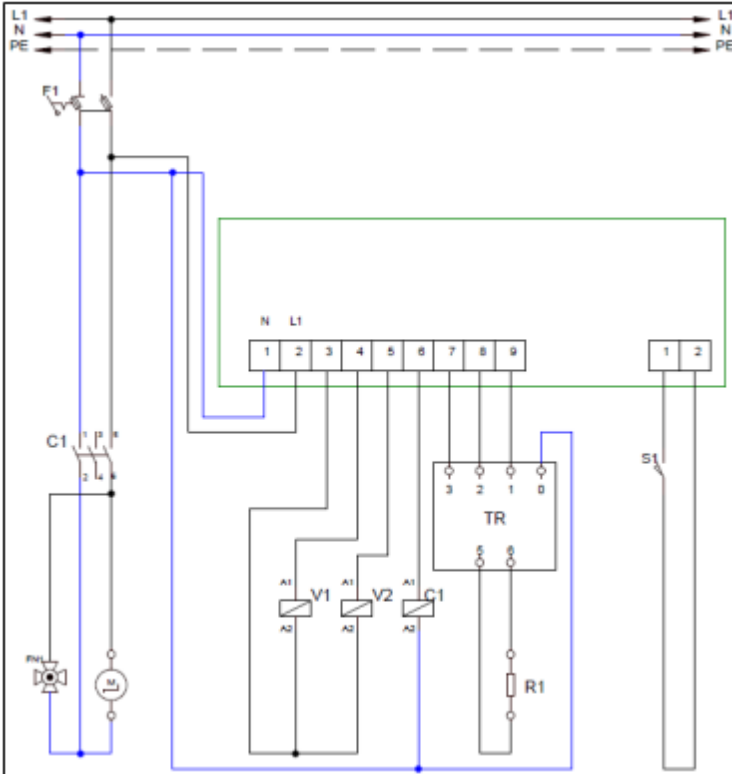
EMP.VCM.01-GN

# VACUUM MACHINES

## G SPARE PART LIST- EXPLODING DRAWINGS

PRODUCT CODE: EMP.VCM.01-GN		
NO	PRODUCT NAME	P.CODE
1	CABLE BASKET	M.ELK-KD-VCM-002
2	CAPACITOR	M.ELK-MUH-KPS-002
3	CONTACTOR LC1K0910M	ERS.M.ELK-KNT-KNT-021
4	INSURANCE	ERS.M.ELK-SGR-007
5	TANK LEVEL INDICATOR	M.MUH-083
6	1/2 VALVE	ERS.M.MEK-TES-KVN-001
7	FOOT	ERS.M.AKS-AYK-PLS-002
8	DIGITAL CARD	M.ELK-EDM-VMS-013
9	PANEL SHEET	YSC-ERS.VCM-LZ-0054
10	PANEL LABEL	M.AKS-ETK-LKS-ERS-VCM-002
11	VACUUM HOSE	HTS-HRT-010
12	AIR SUCTION PLASTIC	YTL-ERS.VCM-KS-0025
13	16 A 0-1 KEY	M.ELK-SLT-ANL-005
14	CHASSIS	-
15	MOTOR FOOT SPRING	M.YAY-ERS-027
16	VACUUM PUMP	M.ELK-MTR-PMP-010
17	FAN 80*83	M.ELK-HVL-KFN-010
18	BACK COVER SHEET	YSC-ERS.VCM-LZ-0043
19	TOP COVER SHEET	YSC-ERS.VCM-LZ-0040
20	TOP COVER SHEET	YSC-ERS.VCM-LZ-0050
21	PANEL LOCK	ERS.M.AKS-KLT-GNL-003
22	HINGE	ERS.M.AKS-MNT-INX-002
23	HANDLE	M.AKS-KLP-BKL-023
24	TANK FILTER	YMH-ERS.VCM-FSM-0005

## H ELECTRIC CIRCUIT SCHEMA



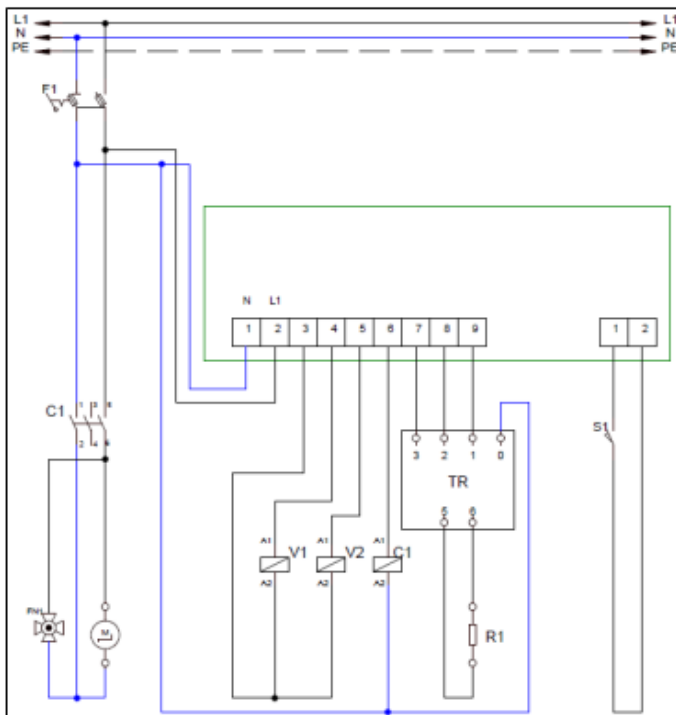
### EMP.VCM.01

<b>V1</b>	VACUUM VALVE 220V
<b>V2</b>	POCKET VALVE 220V
<b>M</b>	VACUUM MOTOR 3/4 HP
<b>S1</b>	LID SWITCH
<b>C1</b>	VACUUM MOTOR CONTACTOR 220V 20A
<b>R</b>	RESISTANCE 0,20 Ohm
<b>TR</b>	TRAFO 220/ 24-26-28 V.(160 W)



# VACUUM MACHINES

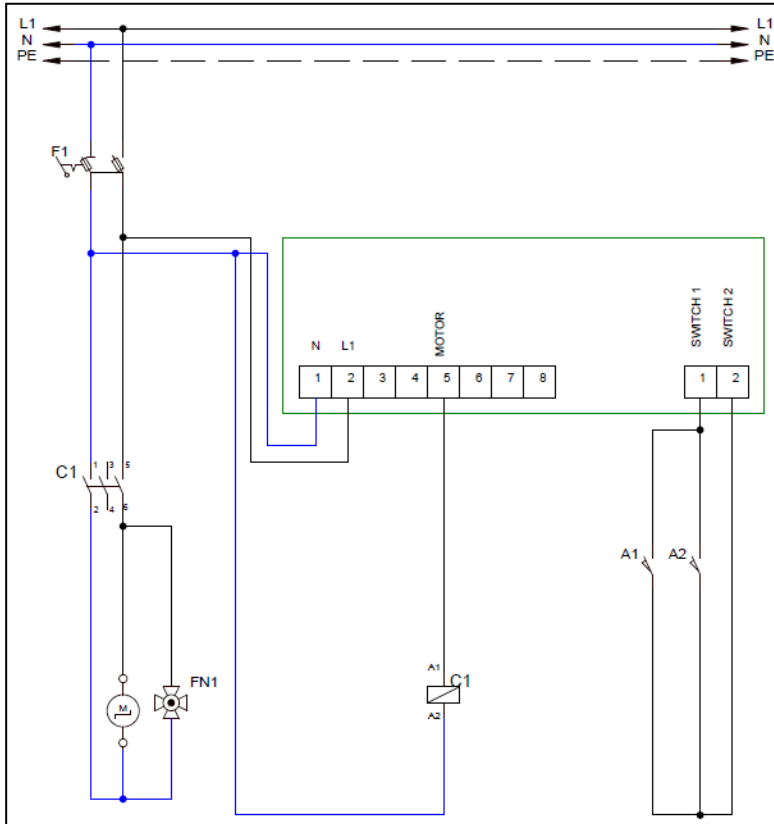
## H ELECTRIC CIRCUIT SCHEMA



**EMP.VCM.02**

<b>V1</b>	VACUUM VALVE 220V
<b>V2</b>	POCKET VALVE 220V
<b>M</b>	VACUUM MOTOR 0,75 KW 1400 D/dk (220 V)
<b>S1</b>	LID SWITCH
<b>C1</b>	VACUUM MOTOR CONTACTOR 220V 20A
<b>R1</b>	RESISTANCE 0,30 Ohm
<b>TR</b>	TRAFO 220/ 28-30-32 V.(350 W)
<b>FN1</b>	COOLING FAN
<b>F1</b>	UNSURENCE

## H ELECTRIC CIRCUIT SCHEMA



### EMP.VCM.01-GN

<b>A1-A2</b>	VACUUM SWITCH
<b>FN1</b>	COOLING FAN 220 V.
<b>M</b>	VACUUM MOTOR 3/4 HP
<b>C1</b>	VACUUM MOTOR CONTACTOR 220V
<b>FN</b>	MAIN FUSE 2X6A.