



DOUGH KNEADING MACHINE

CONTENTS

A	GENERAL INFORMATION	Page 2
A1	PRODUCT DESCRIPTION	Page 3
A2	TECHNICAL INFORMATION.....	Page 3
A3	TRANSPORTATION	Page 4
A4	UNPACKING	Page 4
B	INSTALLATION	Page 4
C	SAFETY INSTRUCTIONS	Page 5
D	OPERATION	Page 6
E	CLEANING & MAINTENANCE.....	Page 7
F	TROUBLESHOOTING	Page 7
G	SPARE PART LIST- EXPLODING DRAWINGS	Page 8
H	ELECTRIC CIRCUIT SCHEMA	Page 18

A GENERAL INFORMATION

Before installing the appliance, read operation and maintenance instructions carefully. Wrong installation and part changing may damage the product or may cause injury on people. These are not in our company's responsibility to damage the appliance intentionally, negligence, detriments because of disobeying instructions and regulations, wrong connections. Unauthorized intervention to appliance invalidates the warranty.

1. This instruction manual should be kept in a safe place for future reference.
2. **Installation should be made in accordance with ordinances and security rules of that country by a qualified service personnel.**
3. This appliance has to be used by trained person.
4. Please turn off the appliance immediately in the event of malfunction or failure. The appliance should be repaired only by authorized service personnel. Please demand original spare part.

DOUGH KNEADING MACHINE

A1 PRODUCT DESCRIPTION

*Professional Spiral Dough Mixer, that provides high efficiency has been designed to be used in industrial kitchens.

Product Code	Dimensions (mm)	Weight (kg)	Packaging Dimensions (mm)
HY.01.K	518x858x771	78	550x960x930
HY.02.K	518x858x771	78	550x960x930
HY.03.K	593x908x772	92	590x1060x940
HY.04.K	593x908x772	92	590x1060x940
HY.05.K	668x963x791	106	740x1150x980
HY.06.K	668x963x791	106	740x1150x980
HY.07.K	791x1115x882	140	920x1180x1070
HY.08.K	791x1115x882	140	920x1180x1070
HY.11.K	440x688x648	58	560x840x710
HY.12.K	440x688x648	58	560x840x710

A2 TECHNICAL INFORMATION

Product Code	Bowl Dimensions (mm)	Bowl Capacity (for flour) (kg)	Dough Capacity (kg)	Power (Kw)	Operating Voltage (V)	Cable (mm ²)	Fuse (A)
HY.01.K	430x225	12	30	0,75	220	3x1,5	16
HY.02.K	430x225	12	30	0,55	380	5x1,5	16
HY.03.K	500x270	20	45	0,75	220	3x1,5	16
HY.04.K	500x270	20	45	0,55	380	5x1,5	16
HY.05.K	600x290	30	65	0,55	220	3x1,5	16
HY.06.K	600x290	30	65	0,75	380	5x1,5	16
HY.07.K	750x350	50	110	1,10	220	3x1,5	16
HY.08.K	750x350	50	110	1,10	380	5x1,5	16
HY.11.K	360x190	7	17	1,10	220	3x1,5	16
HY.12.K	360x190	7	17	0,37	380	5x1,5	16

A3 TRANSPORTATION

*This appliance can not be moved by hand from area to area.It must be moved on pallet with forklift truck.

A4 UNPACKING

*Please unpack the package according to the security codes and ordinances of current country and get rid from the pack.Parts which contacts with food are produced by stainless steel.All plastic parts are marked by material's symbol.

*Please check that all the parts of appliance had come completely and if they are damaged or not during the shipping.

B INSTALLATION

*Please place the product to straight and sturdy ground,please take necessary steps against possibility of overturn.

*Technician who will serve for installation and service for the appliance must be professional on this subject and must have installation and service licenses by the company.

*Connection to Electric Power Supply must be done by authorized person.

*Please be sure that the voltage connected to appliance must be equal with the voltage which is on appliance's label.




This appliance must be connected to an earthed outlet in accordance with safety rules and standards.


*Appliance's earthing must be connected to earthing line on panel which is nearest to electric installation.


*Connection to the main fuse and leak current fuse must be done in accordance with the current regulations.


DOUGH KNEADING MACHINE


C SAFETY INSTRUCTIONS


-  *Do not use the appliance in insufficient lighted place.


-  *Do not touch the moving attachments while the appliance operates.


-  *Do not install the appliance in the presence of flammable or explosive materials.


-  *Do not operate the appliance when the machine is empty.

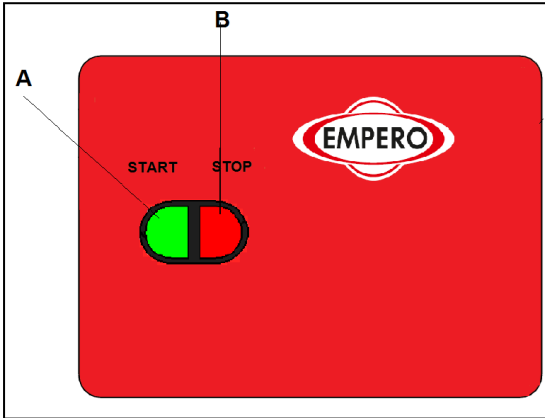
-  *Do not load so less or more than appliance's capacity .

-  *Do not attempt to use the appliance without suitable protective equipments.

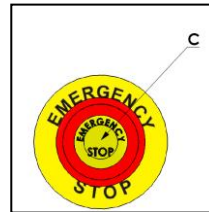
-  *Because of any reason if there is a fire or flame flare where the appliance is used,turn off all gas valves and electric contactor switch quickly and use fire extinguisher .Never use water to extinguish the fire.

-  *All the damages because of not having earthing connection will not be on warranty.

-  *Do not place your hand into the bowl while the appliance is operating .Otherwise mixer may damage you seriously.

D OPERATION***Control Panel;**

- A** : Start Button
B : Stop Button
C : Urgent Stop Button



HY.01.K-02.K-03.K-04.K-05.K-06.K-07.K-08.K-11.K-12.K

***Operating;**

- Before operating, clean the bowl with a wet cloth and dry.
- In order to operate the appliance, lift urgent stop button and press start button.
- If the appliance operates with 380 V, while plugging during first operation, pay attention to be operated on the direction of arrow.
- While the appliance is working, add enough water and flour as bowl capacity.
- You can decrease operating time by turning the bowl manually.
- Press stop button after dough kneading process.
- Take off the dough from bowl.
- After the operation completed, unplug the power supply.



DOUGH KNEADING MACHINE

E CLEANING & MAINTENANCE

➤ CLEANING AND MAINTENANCE AFTER EVERY USE

- Clean the mixer attachments after every kneading process. Otherwise dough remains that occur in these places may make appliance's operating difficult.
- Always turn off the appliance and disconnect from the power supply before cleaning.
- Clean outer surface of appliance, mixer and bowl with hot water and then dry.
- Do not use abrasive cleaning chemicals as these can leave harmful residues.
- Do not clean the appliance by spraying water directly, otherwise electric motor may get damaged.

➤ PERIODIC CLEANING AND MAINTENANCE

- Maintenance should be done by qualified person.
- Get the periodic maintenance of the appliance once in every 15 days.
- Spiral Dough Mixer requires low maintenance (Motor and ball bearings are lubricated).
- Check the appliance's motor and tension of belt.

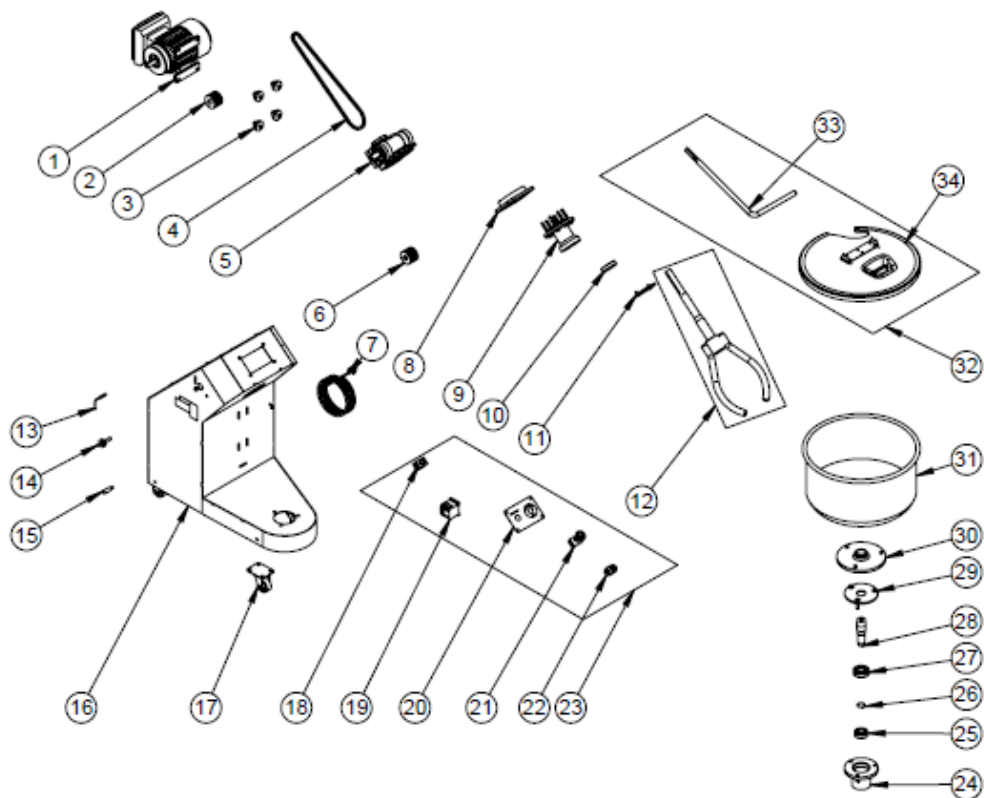
F TROUBLESHOOTING

THE APPLIANCE DOESN'T OPERATE	<ol style="list-style-type: none"> 1. Check if the appliance is plugged in. 2. Check the electrical connections and voltage. 3. If the urgents stop button is not lifted, lift it. 4. Check if the ON/OFF button is operating. 5. Check that if there is any problem with contactor or not.
THE APPLIANCE IS NOISY	<ol style="list-style-type: none"> 1. Check if there is enough water and flour in dough bowl. 2. Check the mixing attachments. 3. If the motor is noisy, stop it and call authorized service.
THE APPLIANCE STOPPED	<ol style="list-style-type: none"> 1. The appliance can stop due to low voltage. In this situation check the voltage. 2. The appliance may stop when it is overloaded. In this situation allow the motor to cool by taking off some materials from bowl.

- If dough kneading is not done at suitable quality
- If any function of security doesn't work
 - Do not use the appliance.

***If these problems are still going on, contact with our authorized service.**

G SPARE PART LIST-EXPLODING DRAWING



HY.01.K / HY.02.K



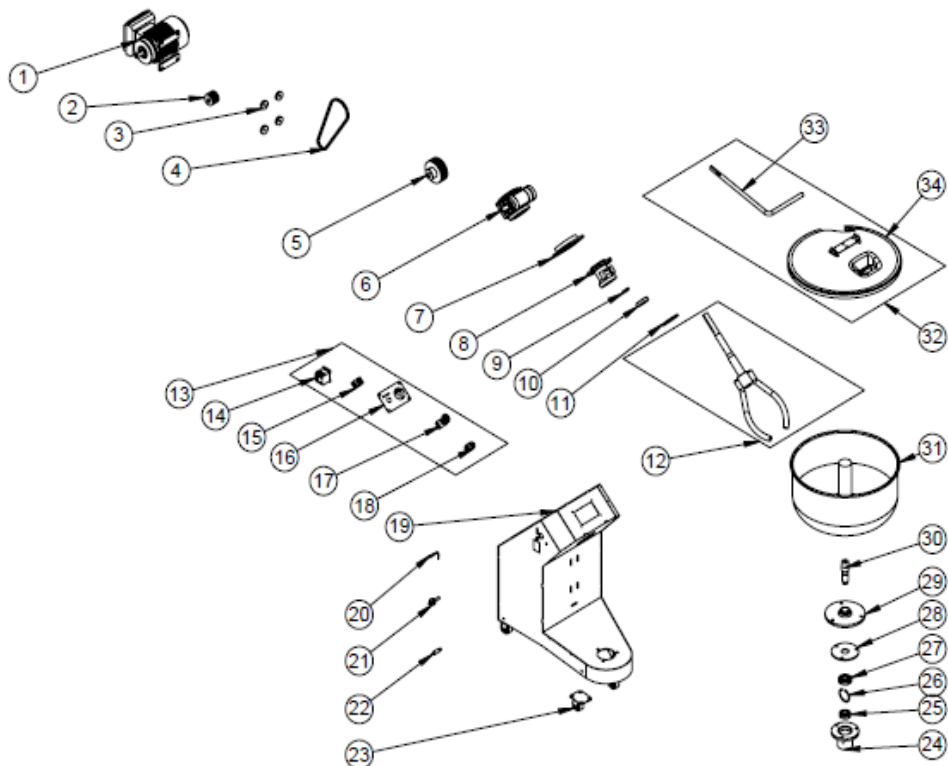
DOUGH KNEADING MACHINE

G SPARE PART LIST-EXPLODING DRAWING

PRODUCT CODE: HY.01.K / HY.02.K

NO	PRODUCT NAME	PRODUCT CODE
1	ELECTRIC MOTOR - HY.01.K	M.ELK-MTR-RSM-029
1	ELECTRIC MOTOR - HY.02.K	M.ELK-MTR-RSM-024
2	MOTOR PULLEY	YDK-ERS.HY-CN-0025
3	MOTOR FOOT TIRE	M.ENJ-ERS-LST-017
4	VARIBELT BELT	M.KYS-VKY-009
5	REDUCER	M.MON-RDK-007
6	MOTOR PULLEY	YDK-ERS.HY-CN-0025
7	PLUG-IN GRAY CABLE	M.ELK-PWR-PBK-003
8	REDUCER FLANGE ESV-63	M.MON-RDK-010
9	SHAFT SLEEVE	YDK-ERS.HY-CN-0021
10	BEARING	M.RLM-NRM-021
11	SHAFT SLEEVE COVER	YSC-ERS.HY-LZ-0070
12	AXE INTERMEDIATE ASSEMBLY	ARA-ERS.HY-0009
13	MAGNETIC SENSOR	M.ELK-SWC-KTG-001
14	HINGE SHAFT	YTL-ERS.HY-KS-0034
15	SPIRAL CASING STOP SCREW	YTL-ERS.SH-KS-0009
16	CHASSIS	-
17	POLYEMIDE BRAKED WHEEL	M.AKS-TKR-PSF-002
18	KONTAK	M.ELK-SLT-KON-001
19	CONTRACTOR	M.ELK-KNT-KNT-021
20	PANEL SHEET	YSC-ERS.HY-LZ-0139
21	EMERGENCY STOP BUTTON	M.ELK-SLT-BTL-007
22	START STOP BUTTON -0-1 RED GREEN	M.ELK-SLT-BTL-003
23	ELECTRICAL PANEL GROUP - HY.01.K	M.ELK-PNO-HY-001
23	ELECTRICAL PANEL GROUP - HY.02.K	M.ELK-PNO-HY-002
24	BOILER COVER	YDK-ERS.HY-CN-0019
25	ORS BEARING	M.RLM-NRM-029
26	SEGMAN	B-SEG-SYH-015
27	ORS BEARING	M.RLM-NRM-032
28	BOILER SLEEVE SHAFT	YTL-ERS.HY-KS-0022
29	BOILER SHELL COVER SHEET	YSC-ERS.HY-LZ-0054
30	BOILER CONNECTION	YDK-ERS.HY-CN-0018
31	DOUGH BOILER	M.MTS-ERS-HY-001
32	COVER INTERMEDIATE ASSEMBLY	ARA-ERS.HY-0010
33	COVER HANDLE	YTL-ERS.HY-KS-0027
34	FLEXIGLASS COVER	M.ENJ-ERS-FLK-023

G SPARE PART LIST-EXPLODING DRAWING



HY.03.K / HY.04.K



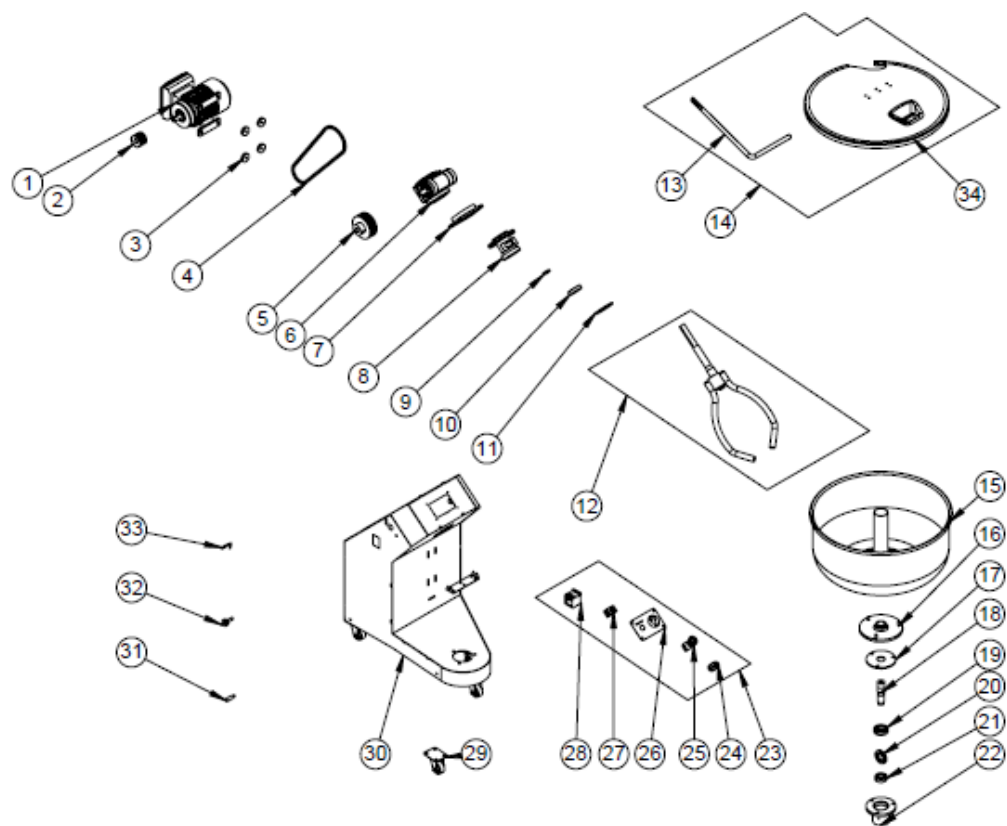
DOUGH KNEADING MACHINE

G SPARE PART LIST-EXPLODING DRAWING

PRODUCT CODE: HY.03.K / HY.04.K

NO	PRODUCT NAME	PRODUCT CODE
1	ELECTRIC MOTOR - HY.03.K	M.ELK-MTR-RSM-029
1	ELECTRIC MOTOR - HY.04.K	M.ELK-MTR-RSM-024
2	MOTOR PULLEY	YDK-ERS.HY-CN-0025
3	MOTOR FOOT TIRE	M.ENJ-ERS-LST-017
4	VARIBELT BELT	M.KYS-VKY-009
5	REDUCER PULLEY	YDK-ERS.HY-CN-0022
6	REDUCER	M.MON-RDK-007
7	REDUCER FLANGE	M.MON-RDK-010
8	SHAFT SLEEVE	YDK-ERS.HY-CN-0021
9	COVER ARM BEARING HOUSING	YTL-ERS.HY-KS-0035
10	BEARING	M.RLM-NRM-021
11	SHAFT SLEEVE COVER	YSC-ERS.HY-LZ-0070
12	AXE INTERMEDIATE ASSEMBLY	ARA-ERS.HY-0011
13	ELECTRICAL PANEL GROUP - HY.03.K	M.ELK-PNO-HY-001
13	ELECTRICAL PANEL GROUP - HY.04.K	M.ELK-PNO-HY-002
14	SCHNEIDER LC1K0910M7 MINI CONTACTOR	M.ELK-KNT-KNT-021
15	KONTAK	M.ELK-SLT-KON-001
16	PANEL SHEET	YSC-ERS.HY-LZ-0139
17	EMERGENCY STOP BUTTON	M.ELK-SLT-BTL-007
18	START STOP BUTTON	M.ELK-SLT-BTL-003
19	CHASSIS	-
20	MAGNETIC SENSOR	M.ELK-SWC-KTG-001
21	HINGE SHAFT	YTL-ERS.HY-KS-0034
22	SPIRAL CASING STOP SCREW	YTL-ERS.SH-KS-0009
23	55X20 POLYEMIDE DRUNK BRAKE CASTER	M.AKS-TKR-PSF-002
24	BOILER BOILER	YDK-ERS.HY-CN-0019
25	BEARING	M.RLM-NRM-029
26	SEGMAN	B-SEG-SYH-015
27	ORS BEARING	M.RLM-NRM-032
28	BOILER SHELL COVER SHEET	YSC-ERS.HY-LZ-0054
29	BOILER CONNECTION	YDK-ERS.HY-CN-0018
30	BOILER SLEEVE SHAFT	YTL-ERS.HY-KS-0022
31	DOUGH BOILER	M.MTS-ERS-HY-002
32	COVER ASSEMBLY	ARA-ERS.HY-0012
33	COVER HANDLE	YTL-ERS.HY-KS-0027
34	FLEXIGLASS COVER	M.ENJ-ERS-FLK-024

G SPARE PART LIST-EXPLODING DRAWING



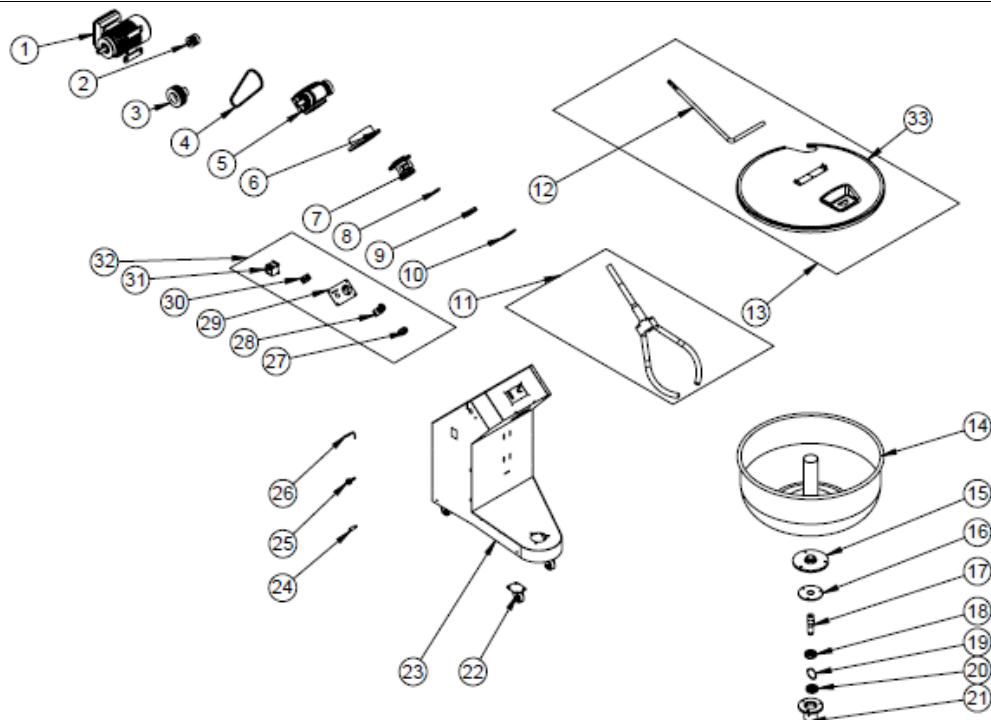
HY.05.K / HY.06.K

DOUGH KNEADING MACHINE

G SPARE PART LIST-EXPLODING DRAWING

PRODUCT CODE: HY.05.K / HY.06.K		
NO	PRODUCT NAME	PRODUCT CODE
1	ELECTRIC MOTOR - HY.05.K	M.ELK-MTR-RSM-030
1	ELECTRIC MOTOR - HY.06.K	M.ELK-MTR-RSM-031
2	MOTOR PULLEY	YDK-ERS.HY-CN-0025
3	MOTOR FOOT TIRE	M.ENJ-ERS-LST-017
4	VARIBELT BELT	M.KYS-VKY-009
5	REDUCER PULLEY	YDK-ERS.HY-CN-0022
6	REDUCER	M.MON-RDK-007
7	REDUCER FLANGE	M.MON-RDK-010
8	SHAFT SLEEVE	YDK-ERS.HY-CN-0021
9	COVER ARM BEARING HOUSING	YTL-ERS.HY-KS-0035
10	BEARING	M.RLM-NRM-021
11	SHAFT SLEEVE COVER	YSC-ERS.HY-LZ-0070
12	AXE ASSEMBLY	ARA-ERS.HY-0013
13	COVER HANDLE	YTL-ERS.HY-KS-0028
14	COVER ASSEMBLY	ARA-ERS.HY-0014
15	DOUGH BOWL	M.MTS-ERS-HY-003
16	BOILER CONNECTION	YDK-ERS.HY-CN-0018
17	BOILER SHELL COVER SHEET	YSC-ERS.HY-LZ-0054
18	BOILER SLEEVE SHAFT	YTL-ERS.HY-KS-0022
19	BEARING	M.RLM-NRM-029
20	PISTON RING	B-SEG-SYH-015
21	ORS BEARING	M.RLM-NRM-032
22	BOILER BOILER	YDK-ERS.HY-CN-0019
23	ELECTRICAL PANEL GROUP - HY.05.K	M.ELK-PNO-HY-001
23	ELECTRICAL PANEL GROUP - HY.06.K	M.ELK-PNO-HY-002
24	START STOP BUTTON 0-1 RED-GREEN	M.ELK-SLT-BTL-003
25	EMERGENCY STOP BUTTON	M.ELK-SLT-BTL-007
26	PANEL SHEET	YSC-ERS.HY-LZ-0139
27	KONTAK	M.ELK-SLT-KON-001
28	CONTACTOR	M.ELK-KNT-KNT-021
29	POLYEMIDE WHEEL WITH BRAKE	M.AKS-TKR-PSF-002
30	CHASSIS	-
31	HOUSING BRACKET SCREW	YTL-ERS.SH-KS-0009
32	HINGE SHAFT	YTL-ERS.HY-KS-0034
33	MAGNETIC SENSOR	M.ELK-SWC-KTG-001
34	FLEXIGLASS COVER	M.ENJ-ERS-FLK-025

G SPARE PART LIST-EXPLODING DRAWING



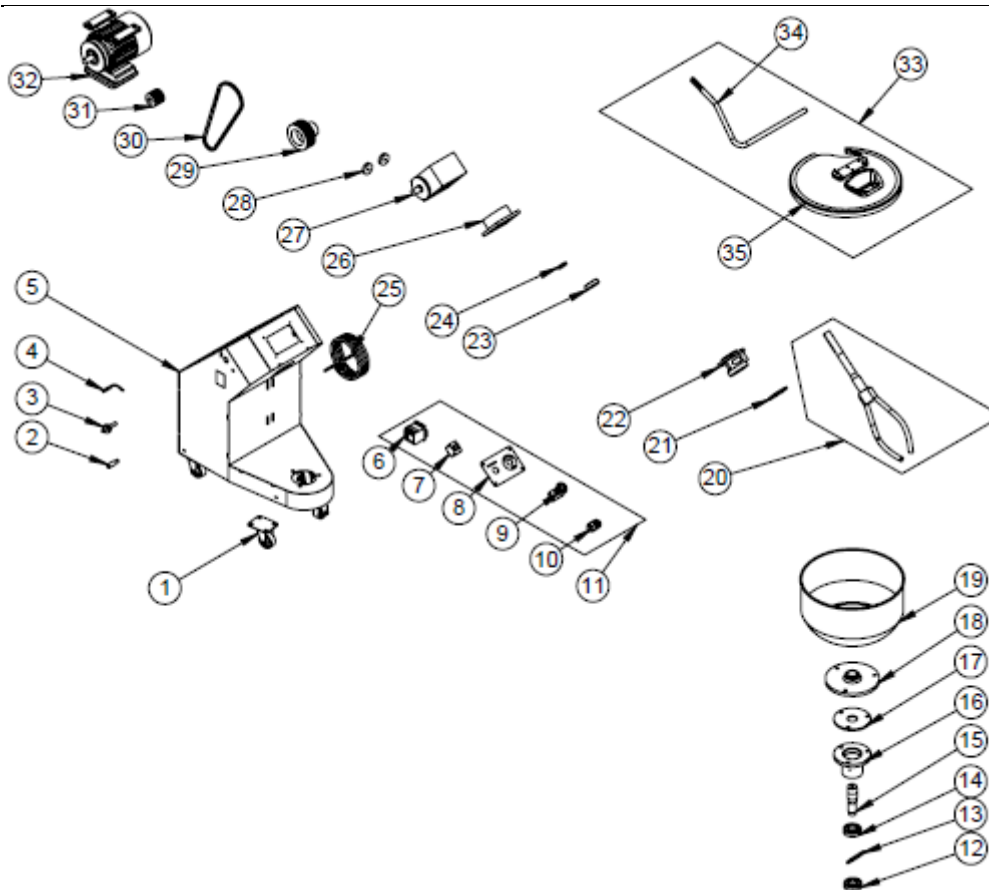
HY.07.K / HY.08.K

DOUGH KNEADING MACHINE

G SPARE PART LIST-EXPLODING DRAWING

PRODUCT CODE: HY.07.K / HY.08.K		
NO	PRODUCT NAME	PRODUCT CODE
1	ELECTRIC MOTOR - HY.07.K	M.ELK-MTR-RSM-032
1	ELECTRIC MOTOR - HY.08.K	M.ELK-MTR-RSM-033
2	MOTOR PULLEY	YDK-ERS.HY-CN-0026
3	REDUCER PULLEY	YDK-ERS.HY-CN-0023
4	VARI BELT BELT	M.KYS-VKY-036
5	REDUCER	M.MON-RDK-009
6	REDUCER FLANGE	M.MON-RDK-012
7	SHAFT SLEEVE	YDK-ERS.HY-CN-0024
8	COVER ARM BEARING HOUSING	YTL-ERS.HY-KS-0035
9	BEARING	M.RLM-NRM-021
10	SHAFT SLEEVE COVER SHEET	YSC-ERS.HY-LZ-0090
11	AXE ASSEMBLY	ARA-ERS.HY-0015
12	COVER HANDLE	YTL-ERS.HY-KS-0029
13	COVER ASSEMBLY	ARA-ERS.HY-0016
14	DOUGH BOWL	M.MTS-ERS-HY-004
15	BOILER CONNECTION	YDK-ERS.HY-CN-0018
16	BOILER SHELL COVER SHEET	YSC-ERS.HY-LZ-0054
17	BOILER SLEEVE SHAFT	YTL-ERS.HY-KS-0022
18	BEARING	M.RLM-NRM-029
19	PISTON RING	B-SEG-SYH-015
20	ORS BEARING	M.RLM-NRM-032
21	BOILER BOILER	YDK-ERS.HY-CN-0019
22	POLYEMIDE WHEEL WITH BRAKE	M.AKS-TKR-PSF-002
23	CHASSIS	-
24	HOUSING BRACKET SCREW	YTL-ERS.SH-KS-0009
25	HINGE SHAFT	YTL-ERS.HY-KS-0034
26	MAGNETIC SENSOR	M.ELK-SWC-KTG-001
27	START STOP BUTTON 0-1 RED-GREEN	M.ELK-SLT-BTL-003
28	EMERGENCY STOP BUTTON	M.ELK-SLT-BTL-007
29	PANEL SHEET	YSC-ERS.HY-LZ-0139
30	KONTAK	M.ELK-SLT-KON-001
31	CONTACTOR	M.ELK-KNT-KNT-021
32	ELECTRIC PANEL GROUP	M.ELK-PNO-HY-001
32	ELECTRIC PANEL GROUP	M.ELK-PNO-HY-002
33	FLEXIGLASS COVER	M.ENJ-ERS-FLK-026

G SPARE PART LIST-EXPLODING DRAWING



HY.11.K / HY.12.K



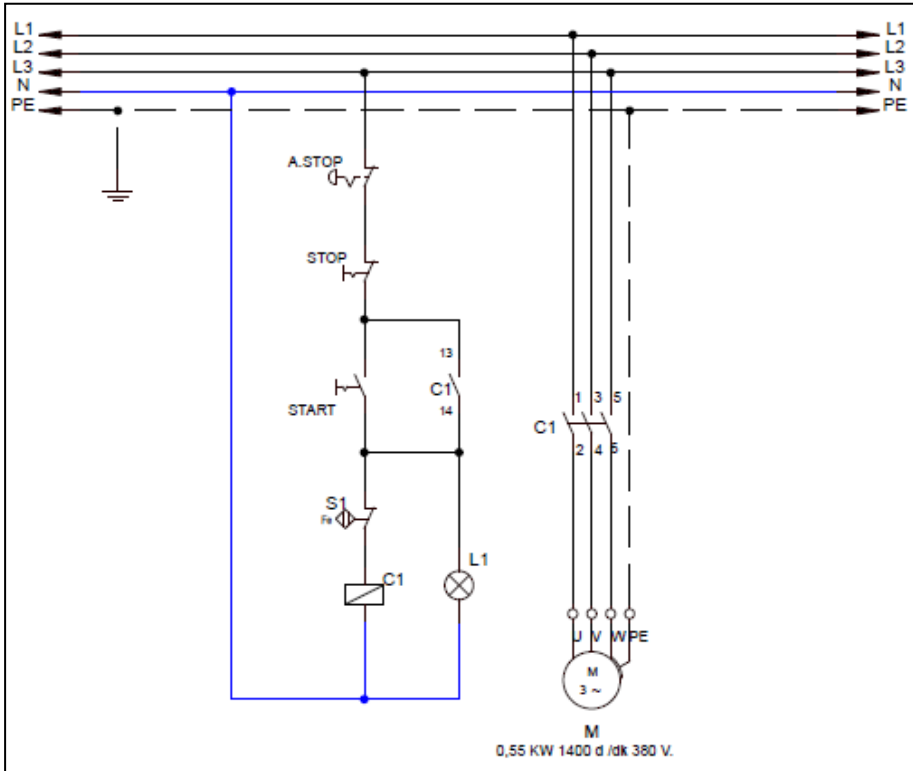
DOUGH KNEADING MACHINE

G SPARE PART LIST-EXPLODING DRAWING

PRODUCT CODE : HY.11.K / HY.12.K

NO	PRODUCT NAME	PRODUCT CODE
1	POLYEMIDE WHEEL WITH BRAKE	M.AKS-TKR-PSF-002
2	HOUSING BRACKET SCREW	YTL-ERS.SH-KS-0009
3	HINGE SHAFT	YTL-ERS.SH-KS-0002
4	MAGNETIC SENSOR	M.ELK-SWC-KTG-001
5	CHASSIS	-
6	SCHNEIDER LC1K0910M7 MINI CONTACTOR	M.ELK-KNT-KNT-021
7	KONTAK	M.ELK-SLT-KON-001
8	PANEL SHEET	YSC-ERS.HY-LZ-0139
9	EMERGENCY STOP BUTTON	M.ELK-SLT-BTL-003
10	START STOP BUTTON 0-1 RED-GREEN	M.ELK-SLT-BTL-007
11	ELECTRICAL PANEL GROUP - HY.11.K	M.ELK-PNO-HY-001
11	ELECTRICAL PANEL GROUP - HY.12.K	M.ELK-PNO-HY-002
12	BEARING	M.RLM-NRM-029
13	PISTON RING	B-SEG-SYH-015
14	ORS BEARING	M.RLM-NRM-032
15	BOILER SLEEVE SHAFT	YTL-ERS.HY-KS-0022
16	BOILER BOILER	YDK-ERS.HY-CN-0019
17	BOILER SHELL COVER SHEET	YSC-ERS.HY-LZ-0054
18	BOILER CONNECTION	YDK-ERS.HY-CN-0018
19	DOUGH BOWL	M.MTS-ERS-HY-006
20	AXE ASSEMBLY	ARA-ERS.HY-0008
21	SHAFT SLEEVE COVER	YSC-ERS.HY-LZ-0047
22	SHAFT SLEEVE	YDK-ERS.HY-CN-0020
23	BEARING	M.RLM-NRM-021
24	COVER ARM BEARING HOUSING	YTL-ERS.HY-KS-0035
25	TTR PLUG-IN GRAY CABLE	M.ELK-PWR-PBK-003
26	REDUCER FLANGE	M.MON-RDK-011
27	REDUCER	M.MON-RDK-008
28	MOTOR FOOT TIRE	M.ENJ-ERS-LST-017
29	REDUCER PULLEY	YDK-ERS.HY-CN-0017
30	(9,5X850) VARIBELT BELT	M.KYS-VKY-037
31	MOTOR PULLEY	YDK-ERS.HY-CN-0027
32	ELECTRIC MOTOR - HY.11.K	M.ELK-MTR-RSM-034
32	ELECTRIC MOTOR - HY.12.K	M.ELK-MTR-RSM-028
33	COVER ASSEMBLY	ARA-ERS.HY-0006
34	COVER HANDLE	YTL-ERS.HY-KS-0030
35	FLEXIGLASS COVER	M.ENJ-ERS-FLK-027

H ELECTRIC CIRCUIT SCHEMA

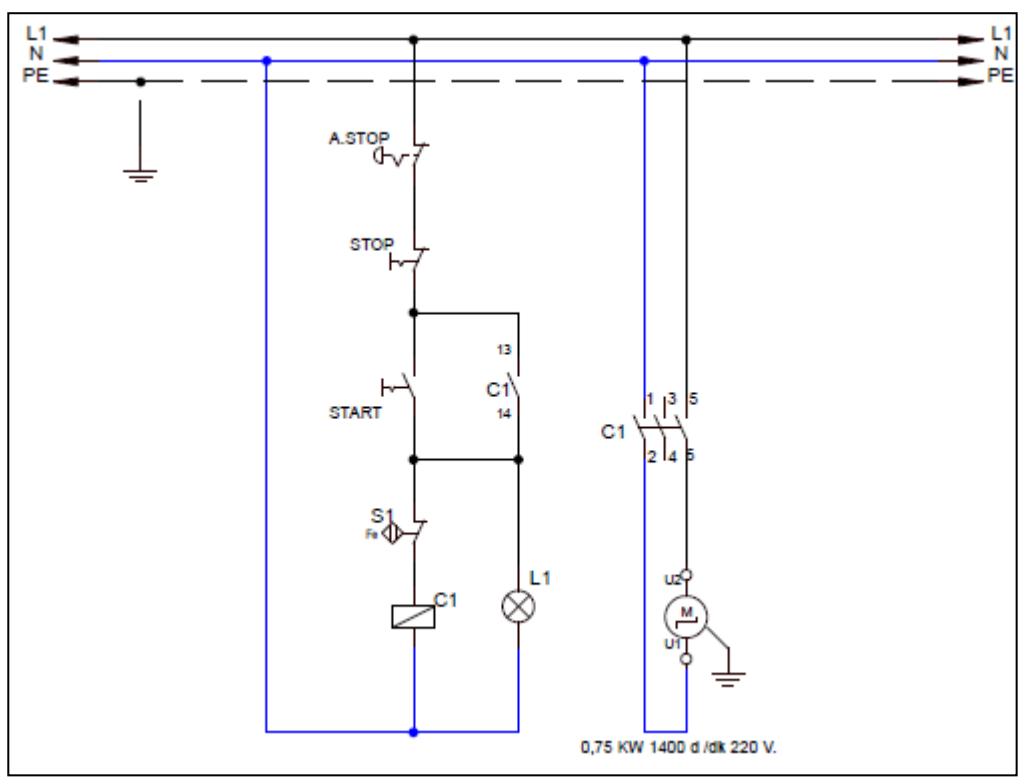


CODE	KW	D/DK	VOLT
HY.02.K	0,55	1400	380
HY.04.K	0,55	1400	380
HY.06.K	0,75	1400	380
HY.08.K	1,1	1400	380
HY.12.K	0,37	1400	380

I	S1	M	C	L1
Terminal	Magnetic Sensor	Motor	Motor side contactor	Signal Lamp

DOUGH KNEADING MACHINE

H ELECTRIC CIRCUIT SCHEMA



CODE	KW	D/DK	VOLT
HY.01.K	0,75	1400	220
HY.03.K	0,75	1400	220
HY.05.K	0,55	1400	220
HY.07.K	1,1	1400	220
HY.11.K	1,1	1400	220

I	S1	M	C1	L1
Terminal	Magnetic Sensor	Motor	Motor side contactor	Signal Lamp