

# PLANETARY MIXERS (3 SPEED )

## CONTENTS

---

<b>A</b>	<b>GENERAL INFORMATION</b> .....	<b>Page 2</b>
A1	PRODUCT DESCRIPTION .....	Page 3
A2	TECHNICAL INFORMATION .....	Page 3
A3	TRANSPORTATION .....	Page 4
A4	UNPACKING .....	Page 4
<b>B</b>	<b>INSTALLATION</b> .....	<b>Page 4</b>
<b>C</b>	<b>SAFETY INSTRUCTIONS</b> .....	<b>Page 5</b>
<b>D</b>	<b>OPERATION</b> .....	<b>Page 6</b>
<b>E</b>	<b>CLEANING &amp; MAINTENANCE</b> .....	<b>Page 7</b>
<b>F</b>	<b>TROUBLESHOOTING</b> .....	<b>Page 7</b>
<b>G</b>	<b>SPARE PART LIST- EXPLODING DRAWING</b> .....	<b>Page 8</b>
<b>H</b>	<b>ELECTRIC CIRCUIT SCHEMA</b> .....	<b>Page 17</b>

## A GENERAL INFORMATION

---

Before installing the appliance, read operation and maintenance instructions carefully. Wrong installation and part changing may damage the product or may cause injury on people. These are not in our company's responsibility to damage the appliance intentionally, negligence, detriments because of disobeying instructions and regulations, wrong connections. Unauthorized intervention to appliance invalidates the warranty.

1. This instruction manual should be kept in a safe place for future reference.
2. **Installation should be made in accordance with ordinances and security rules of that country by a qualified service personnel.**
3. This appliance has to be used by trained person.
4. Please turn off the appliance immediately in the event of malfunction or failure. The appliance should be repaired only by authorized service personnel. Please demand original spare part.

# PLANETARY MIXERS (3 SPEED )

## A1 PRODUCT DESCRIPTION

\*The Professional Planetary Mixer, that provides high efficiency has been designed to be used in industrial kitchens.

Product Code	Dimensions (mm)	Weight (kg)	Packaging Dimensions (mm)
<b>MK.08</b>	680x860x1380	183	800x1020x1550
<b>MK.04</b>	680x880x1400	194	800x1020x1550
<b>MK.06</b>	680x905x1425	198	800x1020x1550

## A2 TECHNICAL INFORMATION

Product Code	Bowl Dimensions (mm)	Bowl Capacity (for flour) (kg)	Bowl Capacity (lt)	Power (Kw)	Operating Voltage (V)	Cable (mm <sup>2</sup> )	Fuse (A)
<b>MK.08</b>	360x360	5 kg	30	1,1-1,5-1,85	380	5x1,5	32
<b>MK.04</b>	400x390	5 kg	40	1-1,5-1,85	380	5x1,5	32
<b>MK.06</b>	430x460	5 kg	60	1-1,5-1,85	380	5x1,5	32

**A3 TRANSPORTATION**

---

\*This appliance can not be moved by hand from area to area. It must be moved on pallet with forklift truck.

**A4 UNPACKING**

---

\*Please unpack the package according to the security codes and ordinances of current country and get rid from the pack. Parts which contacts with food are produced by stainless steel. All plastic parts are marked by material's symbol.

\*Please check that all the parts of appliance had come completely and if they are damaged or not during the shipping.

**B INSTALLATION**

---

\*Please place the product to straight and sturdy ground, please take necessary steps against possibility of overturn.

\*Technician who will serve for installation and service for the appliance must be professional on this subject and must have installation and service licenses by the company.

\*Connection to Electric Power Supply must be done by authorized person.

\*Please be sure that the voltage connected to appliance must be equal with the voltage which is on appliance's label.



This appliance must be connected to an earthed outlet in accordance with safety rules and standards.










\*Appliance's earthing must be connected to earthing line on panel which is nearest to electric installation.

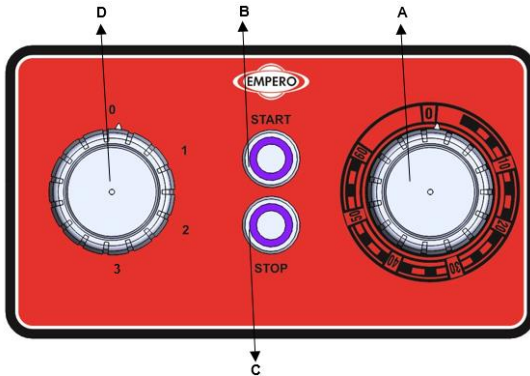
\*Connection to the main fuse and leak current fuse must be done in accordance with the current regulations.

## PLANETARY MIXERS (3 SPEED )

### C SAFETY INSTRUCTIONS

---

-  \*Do not use the appliance in insufficient lighted place.
-  \*Do not touch the moving attachments while the appliance operates.
-  \*Do not install the appliance in the presence of flammable or explosive materials.
-  \*Do not operate the appliance when the machine is empty.
-  \*Do not load so less or more than appliance's capacity .
-  \*Do not attempt to use the appliance without suitable protective equipments.
-  \*Because of any reason if there is a fire or flame flare where the appliance is used,turn off all gas valves and electric contactor switch quickly and use fire extinguisher .Never use water to extinguish the fire.
-  \*All the damages because of not having earthing connection will not be on warranty.
-  \*Do not place your hand into the bowl while the appliance is operating.Otherwise mixer may damage you seriously.

**D OPERATION****\*Control Panel;**

- A** : Timer setting
- B** : Start
- C** : Stop
- D** : Speed Setting

**\*Operating;**

- Before operating, clean the bowl with a wet cloth and dry.
- Insert the desired attachment, push up to the right and lock it into the place.
- Lift the bowl using handle and adjust the distance between the bowl and attachment.
- Use this appliance for mixing (egg, oil, cream etc.).
- Press start button to begin mixing.
- To adjust the speed of the mixer 3, set (D) to the desired level.
- Select the operating time of the mixer from the time options (turn left-right).
- Turn off the timer to operate the appliance pressing stop button.
- Lower the bowl, open the handle guard, take off attachments, take the bowl and take it off.
- After the operation completed, unplug the power supply.

# PLANETARY MIXERS (3 SPEED )

## E CLEANING & MAINTENANCE

### ➤ CLEANING AND MAINTENANCE AFTER EVERY USE

- Clean all mixer attachments after every mixing and kneading process. Otherwise the remains in these parts may make appliance's operating difficult.
- Always turn off the appliance and disconnect from the power supply before cleaning.
- Clean outer surface of appliance ,mixer and bowl with hot water and then dry.
- Do not use abrasive cleaning chemicals as these can leave harmful residues.
- Do not clean the appliance by spraying water directly, otherwise electric motor may get damaged.

### ➤ PERIODIC CLEANING AND MAINTENANCE

- Get the periodic maintenance of the appliance once in every 15 days.
- Maintenance should be done by qualified person.
- The mixers require low maintenance (Motor and ball bearings are lubricated).
- Check the appliance's motor and tension of belt.

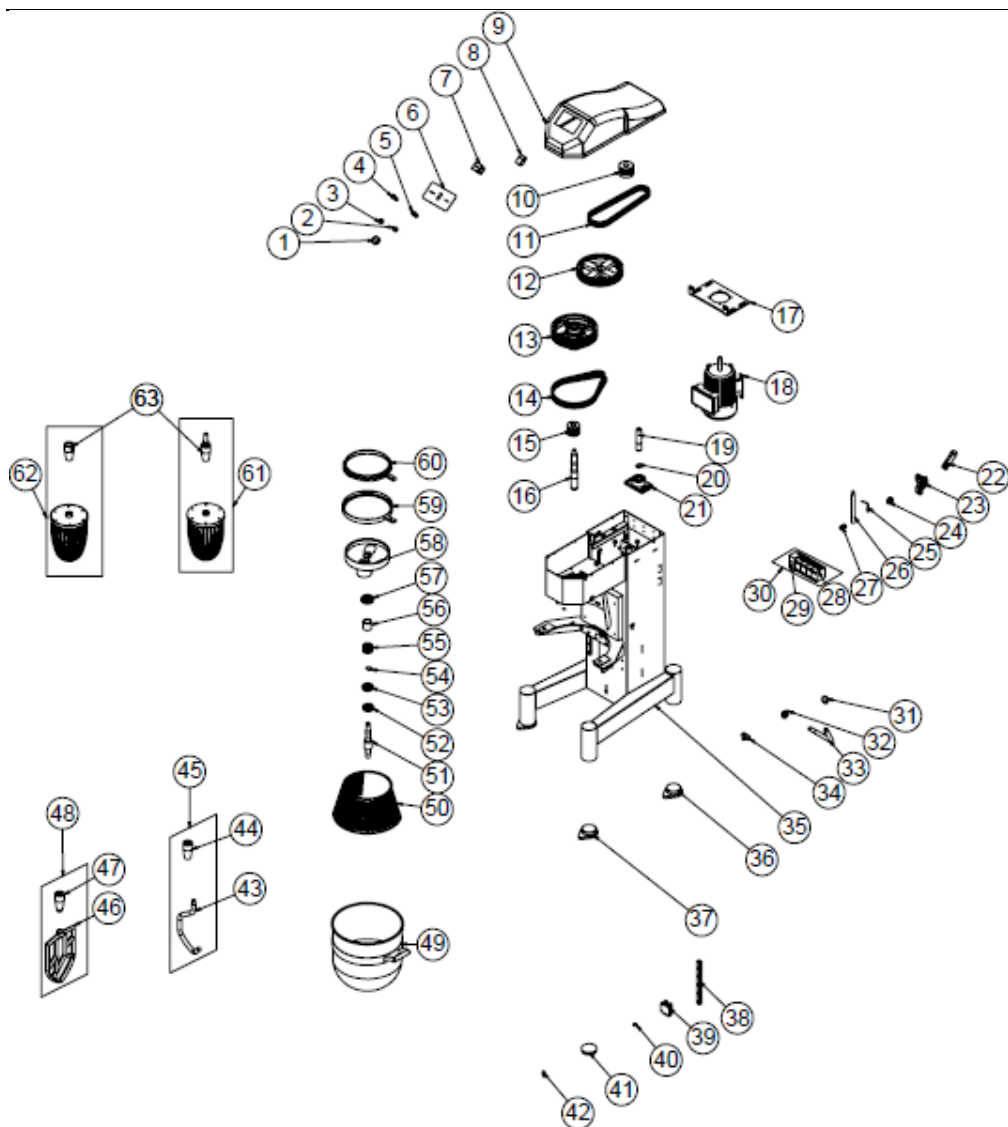
## F TROUBLESHOOTING

<b>THE APPLIANCE DOESN'T OPERATE</b>	<ol style="list-style-type: none"> <li>1. Check if the appliance is plugged in.</li> <li>2. Check the electrical connections and voltage.</li> <li>3. Pull handle and bowl up.</li> <li>4. Check the position of safety guard.</li> </ol>
<b>THE APPLIANCE IS NOISY</b>	<ol style="list-style-type: none"> <li>1. Check the distance between bowl and attachment and adjust them. The attachment should not touch the bowl.</li> <li>2. If the motor is noisy, stop it and call authorized service.</li> </ol>
<b>THE APPLIANCE STOPPED</b>	<ol style="list-style-type: none"> <li>1. The appliance can stop due to low voltage. In this situation check the voltage.</li> <li>2. The appliance may stop when it is overloaded. In this situation allow the motor to cool by taking off some materials from bowl.</li> </ol>
<ul style="list-style-type: none"> <li>• If mixing with mixer is not done at suitable quality</li> <li>• If any function of security doesn't work               <ul style="list-style-type: none"> <li>➤ Do not use the appliance.</li> </ul> </li> </ul>	

**\*If these problems are still going on, contact with our authorized service.**

# PLANETARY MIXERS ( 3 SPEED )

## G SPARE PART LIST-EXPLODING DRAWING





# PLANETARY MIXERS (3 SPEED )

## G SPARE PART LIST-EXPLODING DRAWING

PRODUCT CODE : MK.04		
NO	PRODUCT NAME	P.CODE
1	BUTTON	M.ENJ-ERS-PLS-PS-018
2	BUTTON SOCKET	M.AKS-DGM-MUH-009
3	BUTTON SOCKET	M.AKS-DGM-MUH-010
4	GREEN LIGHTED BUTTON	ERS.M.ELK-SLT-BTL-011
5	RED BUTTON (MOMENTARY)	M.ELK-SLT-BTL-010
6	PANEL SHEET	YSC-ERS.SH-LZ-0074
7	SWITCH	M.ELK-SLT-PKO-016
8	TIME CLOCK	M.ELK-MEK-MTM-004
9	TOP COVER	M.ENJ-ERS-PLS-MK-003
10	ENGINE PULLEY	YDK-ERS.MK-CN-0046
11	STRAP (9.5*950)	M.KYS-VKY-010
12	SLEEVE UPPER PULLEY	YDK-ERS.MK-CN-0048
13	TRANSMISSION PULLEY	YDK-ERS.MK-CN-0037
14	STRAP (9.5*1000)	M.KYS-VKY-009
15	SLEEVE LOWER PULLEY	YDK-ERS.MK-CN-0047
16	TRANSMISSION SHAFT	YTL-ERS.MK-KS-0056
17	ENGINE PLATE	YSC-ERS.MK-LZ-0103
18	ELECTRIC MOTOR	M.ELK-MTR-RSM-068
19	SLEEVE SHAFT	YTL-ERS.MK-KS-0024
20	RING 471-30	B-SEG-SYH-016
21	TENSION SLEEVE	YDK-ERS.MK-CN-0016
22	LIFTING ARM	YTL-ERS.MK-KS-0075
23	BEARING ( UCFL 204G )	M.RLM-YTK-002
24	STAMP	YTL-ERS.MK-KS-0076
25	MAGNETIC SENSOR	M.ELK-SWC-KTG-001
26	SHOCK ABSORBER	M.MUH-052
27	PG-13,5 CABLE FITTING	M.ELK-RKR-PLS-007
28	CONTACTOR LC1D09M7	ERS.M.ELK-KNT-KNT-027
29	GZ1AN11 CONTACTOR	ERS.M.ELK-KNT-KNT-029
30	PANEL GROUP	M.ELK-PNO-MK-006
31	HANDLE	ERS.M.AKS-KLP-BKL-010
32	STEERING HANDLE	YTL-ERS.MK-KS-0066
33	STEERING HANDLE	YTL-ERS.MK-KS-0059
34	SWITCH	M.ELK-SWC-ERS-004
35	CHASSIS	-
36	FOOT BOTTOM RUBBER	M.ENJ-ERS-LST-042

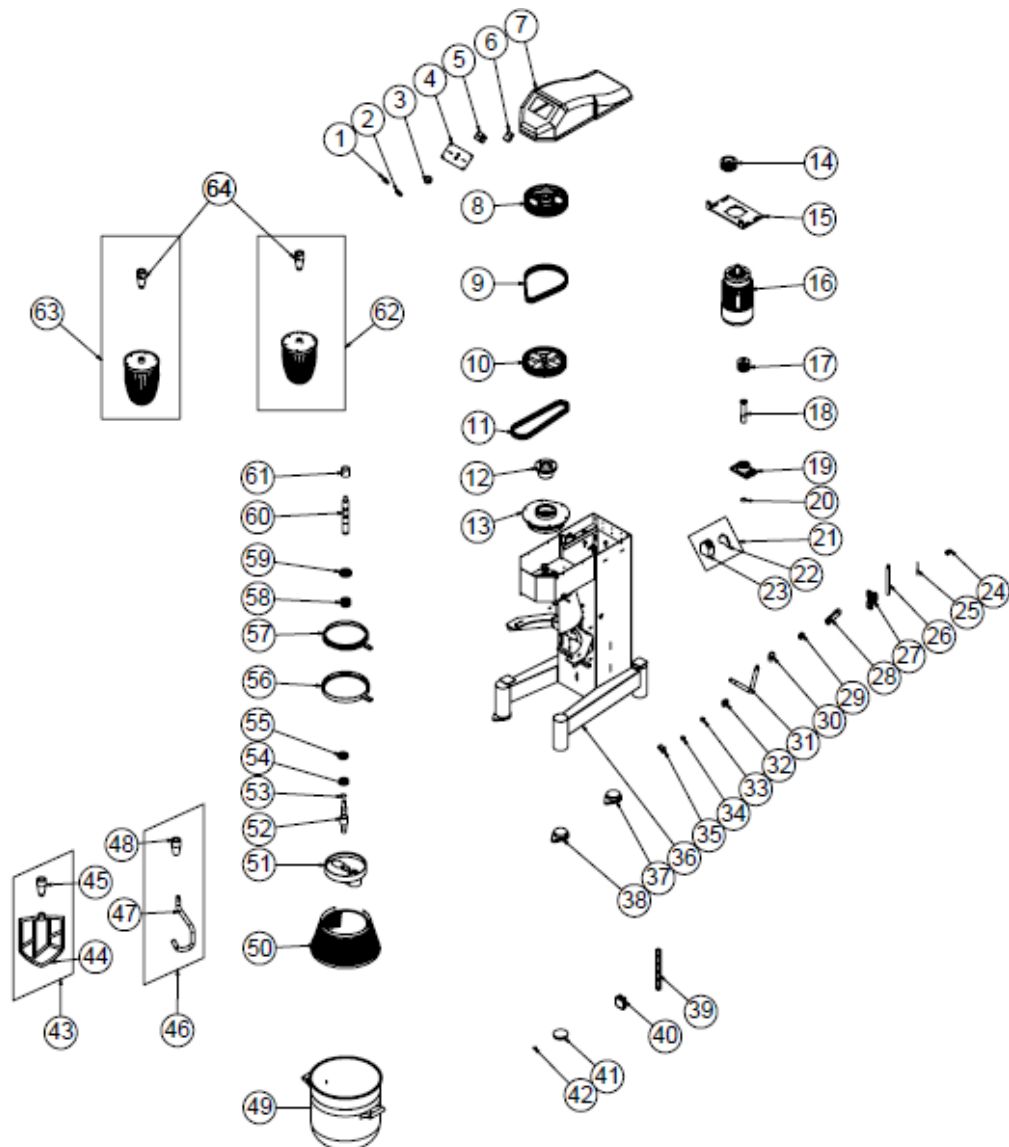


## PLANETARY MIXERS ( 3 SPEED )

37	PLASTIC FOOT	M.ENJ-ERS-LST-044
38	SLED	M.MON-RAY-002
39	CAR	M.MON-RAY-001
40	MAGNET	M.MIK-ERS-007
41	FOOTTOP COVER	M.ENJ-ERS-PLS-MK-006
42	BOILER FIXING PIN	YTL-ERS.MK-KS-0053
43	MIXING ELEMENT	YTL-ERS.MK-KS-0057
44	MIXING ELEMENT	YTL-ERS.MK-KS-0060
45	MIXING APPARATUS	ARA-ERS.MK-0004
46	MIXING APPARATUS	YDK-ERS.MK-CN-0041
47	CONNECTING ELEMENT	YTL-ERS.MK-KS-0061
48	MIXING APPARATUS	ARA-ERS.MK-0010
49	BOILER (40*40)	M.MTS-ERS-MK-008
50	BASKET	M.MUH-051
51	SHAFT SHAFT	YTL-ERS.MK-KS-0058
52	BEARING (630374 ZZ )	M.RLM-NRM-020
53	BEARING ( 6206 ZZ )	M.RLM-NRM-021
54	RING 471-20	B-SEG-SYH-018
55	PLASTIC GEAR	YTL-ERS.MK-KS-0055
56	TRANSMISSION PIPE	YTL-ERS.MK-KS-0067
57	BEARING ( 6207 ZZ )	M.RLM-NRM-034
58	TRANSMISSION ALUMINUM	YDK-ERS.MK-CN-0043
59	CIRCLE BOTTOM PLASTIC	M.ENJ-ERS-PLS-MK-008
60	CIRCLE TOP PLASTIC	M.ENJ-ERS-PLS-MK-007
61	MIXING APPARATUS	ARA.FS-ERS.MK-007
62	MIXING APPARATUS	ARA.FS-ERS.MK-005
63	CONNECTING ELEMENT	YTL-ERS.MK-KS-0081

# PLANETARY MIXERS (3 SPEED )

## G SPARE PART LIST-EXPLODING DRAWING



MK.06

# PLANETARY MIXERS ( 3 SPEED )

## G SPARE PART LIST-EXPLODING DRAWING

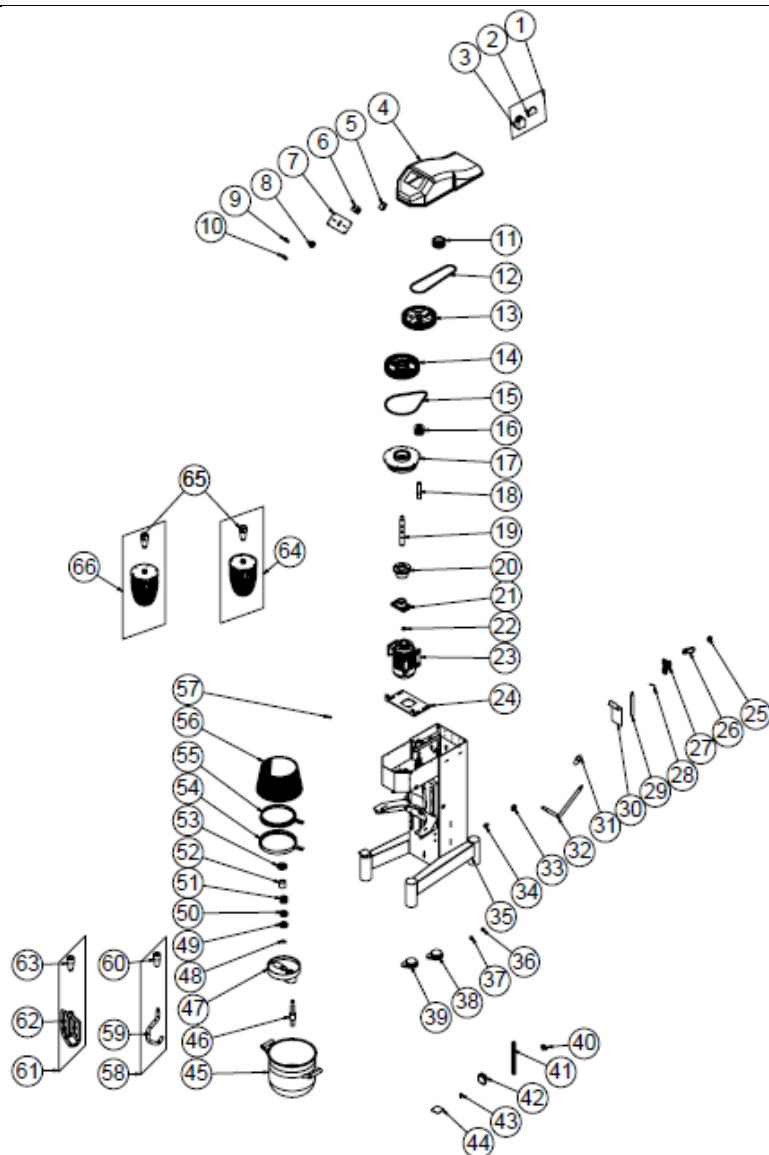
PRODUCT CODE : MK.06		
NO	PRODUCT NAME	P.CODE
1	RED BUTTON (MOMENTARY)	M.ELK-SLT-BTL-010
2	GREEN LIGHTED BUTTON	ERS.M.ELK-SLT-BTL-011
3	BUTTON	M.ENJ-ERS-PLS-PS-018
4	PANEL SHEET	YSC-ERS.SH-LZ-0074
5	SWITCH	M.ELK-SLT-PKO-016
6	TIME CLOCK	M.ELK-MEK-MTM-004
7	TOP COVER	M.ENJ-ERS-PLS-MK-003
8	TRANSMISSION PULLEY	YDK-ERS.MK-CN-0037
9	STRAP (9.5*1000)	M.KYS-VKY-009
10	SLEEVE UPPER PULLEY	YDK-ERS.MK-CN-0048
11	STRAP (9.5*950)	M.KYS-VKY-010
12	TRANSMISSION SLEEVE	YDK-ERS.MK-CN-0042
13	TRANSMISSION	YDK-ERS.MK-CN-0040
14	ENGINE PULLEY	YDK-ERS.MK-CN-0046
15	ENGINE PLATE	YSC-ERS.MK-LZ-0103
16	ELECTRIC MOTOR	M.ELK-MTR-RSM-068
17	SLEEVE LOWER PULLEY	YDK-ERS.MK-CN-0047
18	SLEEVE SHAFT	YTL-ERS.MK-KS-0024
19	TENSION SLEEVE	YDK-ERS.MK-CN-0016
20	RING 471-30	B-SEG-SYH-016
21	PANEL GROUP	M.ELK-PNO-MK-006
22	GZ1AN11 CONTACTOR	ERS.M.ELK-KNT-KNT-029
23	CONTACTOR LC1D09M7	ERS.M.ELK-KNT-KNT-027
24	PG-13,5 CABLE FITTING	M.ELK-RKR-PLS-007
25	MAGNETIC SENSOR	M.ELK-SWC-KTG-001
26	SHOCK ABSORBER	M.MUH-052
27	BEARING ( UCFL 204G )	M.RLM-YTK-002
28	LIFTING ARM	YTL-ERS.MK-KS-0075
29	STAMP	YTL-ERS.MK-KS-0076
30	HANDLE	ERS.M.AKS-KLP-BKL-010
31	STEERING HANDLE	YTL-ERS.MK-KS-0059
32	STEERING HANDLE	YTL-ERS.MK-KS-0066
33	BUTTON SOCKET	M.AKS-DGM-MUH-009
34	BUTTON SOCKET	M.AKS-DGM-MUH-010
35	SWITCH	M.ELK-SWC-ERS-004
36	CHASSIS	-
37	FOOT BOTTOM RUBBER	M.ENJ-ERS-LST-042

## PLANETARY MIXERS (3 SPEED )

38	PLASTIC FOOT	M.ENJ-ERS-LST-044
39	SLED	M.MON-RAY-002
40	CAR	M.MON-RAY-001
41	FOOTTOP COVER	M.ENJ-ERS-PLS-MK-006
42	MAGNET	M.MIK-ERS-007
43	MIXING APPARATUS	ARA-ERS.MK-0014
44	MIXING APPARATUS	YDK-ERS.MK-CN-0044
45	CONNECTING ELEMENT	YTL-ERS.MK-KS-0061
46	MIXING APPARATUS	ARA-ERS.MK-0013
47	MIXING ELEMENT	YTL-ERS.MK-KS-0068
48	MIXING ELEMENT	YTL-ERS.MK-KS-0060
49	BOILER 43*46	M.MTS-ERS-MK-009
50	BASKET	M.MUH-053
51	TRANSMISSION ALUMINUM	YDK-ERS.MK-CN-0043
52	SHAFT SHAFT	YTL-ERS.MK-KS-0058
53	RING 471-20	B-SEG-SYH-018
54	BEARING (630374 ZZ )	M.RLM-NRM-020
55	BEARING ( 6206 ZZ )	M.RLM-NRM-021
56	CIRCLE BOTTOM PLASTIC	M.ENJ-ERS-PLS-MK-008
57	CIRCLE TOP PLASTIC	M.ENJ-ERS-PLS-MK-007
58	PLASTIC GEAR	YTL-ERS.MK-KS-0055
59	BEARING ( 6207 ZZ )	M.RLM-NRM-034
60	TRANSMISSION SHAFT	YTL-ERS.MK-KS-0056
61	TRANSMISSION PIPE	YTL-ERS.MK-KS-0067
62	MIXING APPARATUS	ARA.FS-ERS.MK-006
63	MIXING APPARATUS	ARA.FS-ERS.MK-008
64	CONNECTING ELEMENT	YTL-ERS.MK-KS-0081

# PLANETARY MIXERS ( 3 SPEED )

## G SPARE PART LIST-EXPLODING DRAWING



# PLANETARY MIXERS (3 SPEED )

## G SPARE PART LIST-EXPLODING DRAWING

PRODUCT CODE : MK.08		
NO	PRODUCT NAME	P.CODE
1	PANEL GROUP	M.ELK-PNO-MK-006
2	GZ1AN11 CONTACTOR	ERS.M.ELK-KNT-KNT-029
3	CONTACTOR LC1D09M7	ERS.M.ELK-KNT-KNT-027
4	TOP COVER	M.ENJ-ERS-PLS-MK-004
5	TIME CLOCK	M.ELK-MEK-MTM-004
6	SWITCH	M.ELK-SLT-PKO-016
7	PANEL SHEET	YSC-ERS.SH-LZ-0074
8	BUTTON	M.ENJ-ERS-PLS-PS-018
9	GREEN LIGHTED BUTTON	ERS.M.ELK-SLT-BTL-011
10	RED BUTTON (MOMENTARY)	M.ELK-SLT-BTL-010
11	ENGINE PULLEY	YDK-ERS.MK-CN-0046
12	STRAP (9.5*950)	M.KYS-VKY-010
13	SLEEVE UPPER PULLEY	YDK-ERS.MK-CN-0048
14	TRANSMISSION PULLEY	YDK-ERS.MK-CN-0037
15	STRAP (9.5*1000)	M.KYS-VKY-009
16	SLEEVE LOWER PULLEY	YDK-ERS.MK-CN-0047
17	TRANSMISSION	YDK-ERS.MK-CN-0040
18	SLEEVE SHAFT	YTL-ERS.MK-KS-0024
19	TRANSMISSION SHAFT	YTL-ERS.MK-KS-0056
20	TRANSMISSION SLEEVE	YDK-ERS.MK-CN-0042
21	TENSION SLEEVE	YDK-ERS.MK-CN-0016
22	RING 471-30	B-SEG-SYH-016
23	ELECTRIC MOTOR	M.ELK-MTR-RSM-068
24	ENGINE PLATE	YSC-ERS.MK-LZ-0103
25	STAMP	YTL-ERS.MK-KS-0076
26	LIFTING ARM	YTL-ERS.MK-KS-0075
27	BEARING ( UCFL 204G )	M.RLM-YTK-002
28	MAGNETIC SENSOR	M.ELK-SWC-KTG-001
29	SHOCK ABSORBER	M.MUH-052
30	BOILER REAR LOWER SHEET	YSC-ERS.MK-LZ-0045
31	HANDLE	ERS.M.AKS-KLP-BKL-010
32	STEERING HANDLE	YTL-ERS.MK-KS-0059
33	STEERING HANDLE	YTL-ERS.MK-KS-0066
34	PG-13,5 CABLE FITTING	M.ELK-RKR-PLS-007
35	CHASSIS	-
36	BUTTON SOCKET	M.AKS-DGM-MUH-009
37	BUTTON SOCKET	M.AKS-DGM-MUH-010



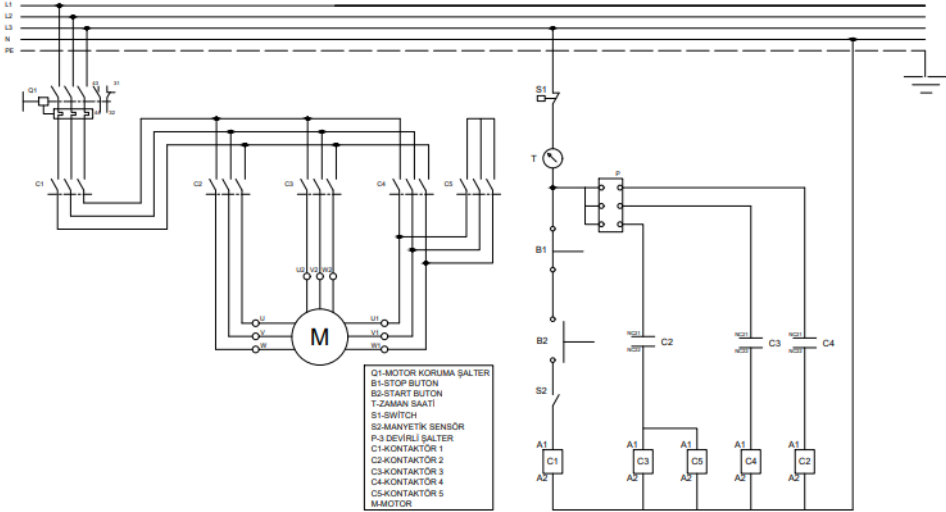
## PLANETARY MIXERS ( 3 SPEED )

38	FOOT BOTTOM RUBBER	M.ENJ-ERS-LST-042
39	PLASTIC FOOT	M.ENJ-ERS-LST-044
40	SWITCH	M.ELK-SWC-ERS-004
41	SLED	M.MON-RAY-002
42	CAR	M.MON-RAY-001
43	BOILER FIXING PIN	YTL-ERS.MK-KS-0053
44	FOOTTOP COVER	M.ENJ-ERS-PLS-MK-006
45	BOILER 36*36	M.MTS-ERS-MK-007
46	SHAFT SHAFT	YTL-ERS.MK-KS-0058
47	TRANSMISSION ALUMINUM	YDK-ERS.MK-CN-0043
48	RING 471-20	B-SEG-SYH-018
49	BEARING (630374 ZZ )	M.RLM-NRM-020
50	BEARING ( 6206 ZZ )	M.RLM-NRM-021
51	PLASTIC GEAR	YTL-ERS.MK-KS-0055
52	TRANSMISSION PIPE	YTL-ERS.MK-KS-0067
53	BEARING ( 6207 ZZ )	M.RLM-NRM-034
54	CIRCLE BOTTOM PLASTIC	M.ENJ-ERS-PLS-MK-008
55	CIRCLE TOP PLASTIC	M.ENJ-ERS-PLS-MK-007
56	BASKET	M.MUH-054
57	MAGNET	M.MIK-ERS-007
58	MIXING APPARATUS	ARA-ERS.MK-0003
59	MIXING ELEMENT	YTL-ERS.MK-KS-0069
60	MIXING ELEMENT	YTL-ERS.MK-KS-0060
61	MIXING APPARATUS	ARA-ERS.MK-0007
62	MIXING APPARATUS	YDK-ERS.MK-CN-0045
63	CONNECTING ELEMENT	YTL-ERS.MK-KS-0061
64	MIXING APPARATUS	ARA.FS-ERS.MK-010
65	CONNECTING ELEMENT	YTL-ERS.MK-KS-0081
66	MIXING APPARATUS	ARA.FS-ERS.MK-009



# PLANETARY MIXERS (3 SPEED )

## H ELECTRIC CIRCUIT SCHEMA



- Q1-ENGINE PROTECTION SWITCH
- B1-STOP BUTTON
- B2-START BUTTON
- T-TIME CLOCK
- S1-SWITCH
- S2-MAGNETIC SENSOR
- P-3 CYCLE SWITCH
- C1-CONTACTOR 1
- C2-CONTACTOR 2
- C3-CONTACTOR 3
- C4-CONTACTOR 4
- C5-CONTACTOR 5
- M-ENGINE



## PLANETARY MIXERS ( 3 SPEED )

PRODUCT CODE	POWER (KW)	RPM	VOLTAGE
<b>MK.04</b>	1.1/1.5-1.85	910/1445/2910	380
<b>MK.06</b>	1.1/1.5-1.85	910/1445/2910	380
<b>MK.08</b>	1.1/1.5-1.85	910/1445/2910	380