



CUTTER MIXER

CONTENTS

A	GENEREAL INFORMATION	Page 2
A1	PRODUCT DESCRIPTION	Page 3
A2	TECHNICAL INFORMATION	Page 3
A3	TRANSPORTATION	Page 3
A4	UNPACKING	Page 3
B	INSTALLATION	Page 4
C	SAFETY INSTRUCTIONS	Page 4
D	OPERATION	Page 5
E	CLEANING & MAINTENANCE	Page 8
F	TROUBLESHOOTING.....	Page 8
G	SPARE PART LIST- EXPLODING DRAWINGS	Page 9
H	ELECTRIC CIRCUIT SCHEMA.....	Page 17

A GENERAL INFORMATION

Before installing the appliance, read operation and maintenance instructions carefully. Wrong installation and part changing may damage the product or may cause injury on people. These are not in our company's responsibility to damage the appliance intentionally, negligence, detriments because of disobeying instructions and regulations, wrong connections. Unauthorized intervention to appliance invalidates the warranty.

1. This instruction manual should be kept in a safe place for future reference.
- 2. Installation should be made in accordance with ordinances and security rules of that country by a qualified service personnel.**
3. This appliance has to be used by trained person.
4. Please turn off the appliance immediately in the event of malfunction or failure. The appliance should be repaired only by authorized service personnel. Please demand original spare part.

CUTTER MIXER

A1 PRODUCT DESCRIPTION

*Professional Cutter Mixer, that provides high efficiency has been designed to be used in industrial kitchens.

Product Code	Dimensions (mm)	Weight (kg)	Packaging Dimensions (mm)
SD.07	610x645x1045	71	720x700x1180
SD.09	720x685x1250	112	760x720x1400
SD.15	470x640x545	46	480x690x680
SD.07-22	615x685x1050	67	720x700x1180

A2 TECHNICAL INFORMATION

Product Code	Capacity (lt)	Tank Dimensions (mm)	Power (Kw)	Operating Voltage (V)	Cable (mm ²)	Fuse (A)
SD.07	20	293x293	1,5-2,5	380	5x1,5	32
SD.09	50	400X400	3,5-5,5	380	5X1,5	32
SD.15	15	290x220	0,60-0,90	380	5x1,5	32
SD.07-22	20	300X300	2,2	220-230V	5x1,5	32

A3 TRANSPORTATION

*This appliance can be moved by hand from area to area. Do not crash and drop the appliance while transporting.

A4 UNPACKING

*Please unpack the package according to the security codes and ordinances of current country and get rid from the pack. Parts which contacts with food are produced by stainless steel. All plastic parts are marked by material's symbol.

*Please check that all the parts of appliance had come completely and if they are damaged or not during the shipping.

B INSTALLATION

*Please place the product to straight and sturdy ground, please take necessary steps against possibility of overturn.

*Technician who will serve for installation and service for the appliance must be professional on this subject and must have installation and service licenses by the company.

*Connection to Electric Power Supply must be done by authorized person .

*Please be sure that the voltage connected to appliance must be equal with the voltage which is on appliance's label.



This appliance must be connected to an earthed outlet in accordance with safety rules and standards.

*Appliance's earthing must be connected to earthing line on panel which is nearest to electric installation.

*Connection to the main fuse and leak current fuse must be done in accordance with the current regulations.

C SAFETY INSTRUCTIONS



*Do not use the appliance in insufficient lighted place.



*Do not touch the moving attachments while the appliance operates.



*Do not install the appliance in the presence of flammable or explosive materials.



*Do not operate the appliance when the machine is empty.



*Do not load so less or more than appliance's capacity.



*Do not attempt to use the appliance without suitable protective equipments.



*Because of any reason if there is a fire or flame flare where the appliance is used, turn off all gas valves and electric contactor switch quickly and use fire extinguisher. Never use water to extinguish the fire.



*All the damages because of not having earthing connection will not be on warranty.



*Do not put your hands into the cutting tank while the appliance is operating.

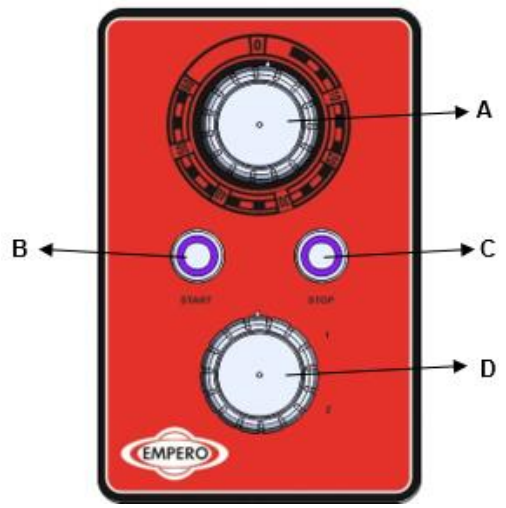
CUTTER MIXER

D OPERATION

*Control Panel;

- A : Timer setting
- B : Start
- C : Stop
- D : Speed setting

SD.07-SD.09



*Operating;

- Before operating the appliance, clean the blade and tank with wet cloth and dry.
- Provide the ducts on cutting blades to pass on to the shaft.
- Open the appliance's upper lid and fill the materials into the vegetable tank.
- Press START button to operate the appliance.
- If the appliance operates with 380 V, while plugging during first operation, pay attention to be operated on the direction of arrow.
- If it is wanted to add material without opening the lid while the appliance is working, solid materials can be added through lid space after dividing into small pieces.
- Since the device is double speed, it will operate at the desired speed after a certain period of time when it is brought to the side (1) in slow use and (2) in fast use.
- Use "timer" to set desired time the left/right. When time expires, the appliance will stop.
- Turn off the timer to operate the appliance pressing stop button.
- In order to take off the materials, first open the lid and unsettle the cutting blade. Careen the bowl by turning the overturning handle to down.
- After taking off the materials, provide the bowl to be in vertical position by lifting bowl handle up.
- After the operation completed, unplug the power supply.

D OPERATION

*Control Panel;

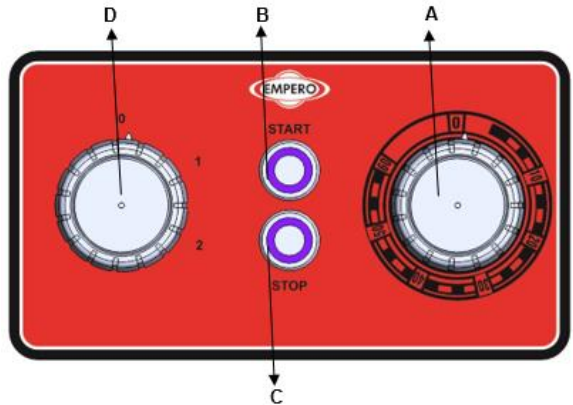
A : Timer setting

B : Start

C : Stop

D : Speed setting

SD.15



*Operating;

- Before operating the appliance, clean the blade and tank with wet cloth and dry.
- Provide the ducts on cutting blades to pass on to the shaft.
- Open the appliance's upper lid and fill the materials into the vegetable tank.
- Press START button to operate the appliance.
- If the appliance operates with 380 V, while plugging during first operation, pay attention to be operated on the direction of arrow.
- If it is wanted to add material without opening the lid while the appliance is working, solid materials can be added through lid space after dividing into small pieces.
- Since the device is double speed, it will operate at the desired speed after a certain period of time when it is brought to the side (1) in slow use and (2) in fast use.s
- Use "timer" to set desired time the left/right. When time expires, the appliance will stop.
- Turn off the timer to operate the appliance pressing stop button.
- In order to take off the materials, first open the lid and unsettle the cutting blade. Careen the bowl by turning the overturning handle to down.
- After taking off the materials, provide the bowl to be in vertical position by lifting bowl handle up.
- After the operation completed, unplug the power supply.

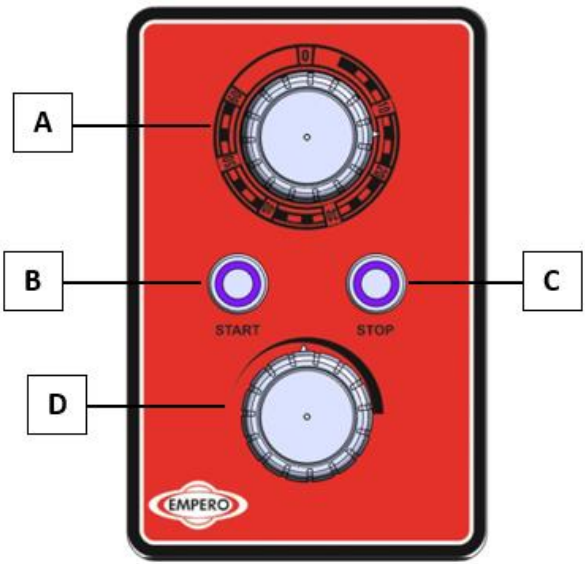
CUTTER MIXER

D OPERATION

*Control Panel;

- A : Timer setting
- B : Start
- C : Stop
- D : Speed setting

SD.07-22



*Operating;

- Before operating the appliance, clean the blade and tank with wet cloth and dry.
- Provide the ducts on cutting blades to pass on to the shaft.
- Open the appliance's upper lid and fill the materials into the vegetable tank.
- Press START button to operate the appliance.
- If it is wanted to add material without opening the lid while the appliance is working, solid materials can be added through lid space after dividing into small pieces.
- Since the device is speed controlled, adjust its speed from the speed button.
- Use "timer" to set desired time the left/right. When time expires, the appliance will stop.
- Turn off the timer to operate the appliance pressing stop button.
- In order to take off the materials, first open the lid and unsettle the cutting blade. Careen the bowl by turning the overturning handle to down.
- After taking off the materials, provide the bowl to be in vertical position by lifting bowl handle up.
- After the operation completed, unplug the power supply.

E CLEANING & MAINTENANCE

➤ CLEANING AND MAINTENANCE AFTER EVERY USE

- Clean outer surface of appliance, tank and cutting blade with hot water and then dry.
- Always turn off the appliance and disconnect from the power supply before cleaning.
- Do not use abrasive cleaning chemicals as these can leave harmful residues.
- Do not clean the appliance by spraying water directly, otherwise electric motor may get damaged.

➤ PERIODIC CLEANING AND MAINTENANCE

- Maintenance should be done by qualified person.
- Get the periodic maintenance of the appliance once in every 15 days.
- The Cutter Mixer requires low maintenance (Motor and ball bearings are lubricated).
- Maintenance of appliance's contactor should be done by compressed air according to frequency of use.
- Maintenance of cutting blade ;
 - Grind the blade with aqueous grinding wheels without disrupting blade angle.

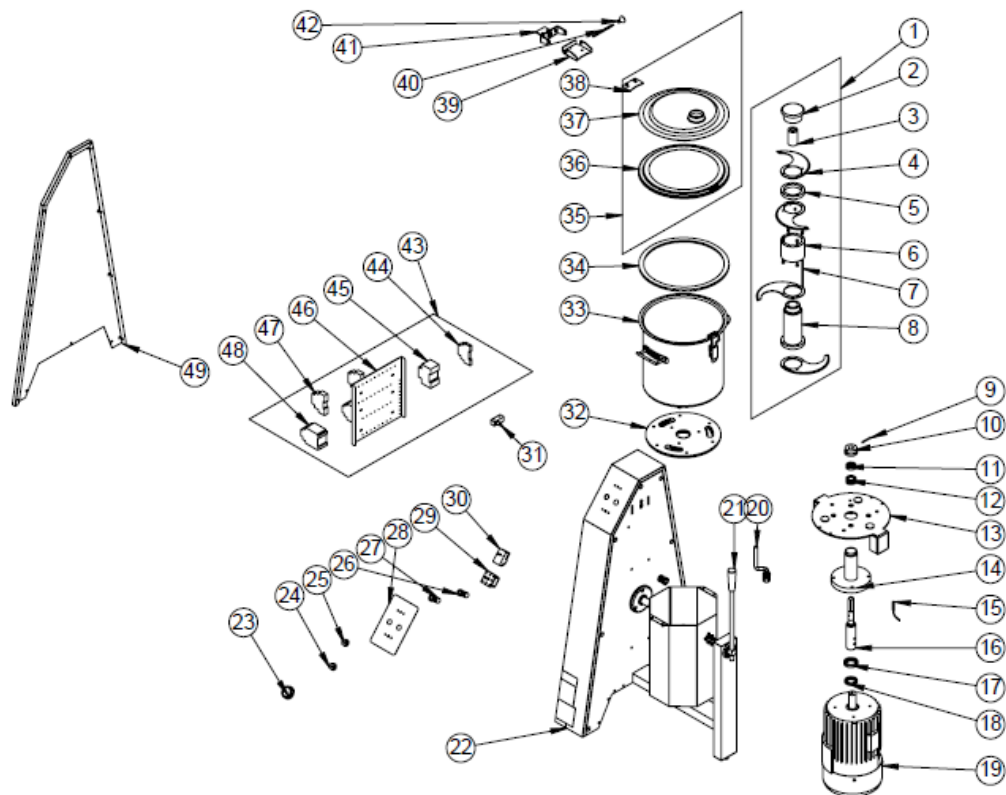
F TROUBLESHOOTING

THE APPLIANCE DOESN'T OPERATE	<ol style="list-style-type: none"> 1. Check if the appliance is plugged in. 2. Check the electrical connections and voltage. 3. Check the bowl's lid.
THE APPLIANCE IS NOISY	<ol style="list-style-type: none"> 1. Check the cutting blades. 2. Check that if there is material accumulated in the tank. 3. If the motor is noisy, stop it and call authorized service.
THE APPLIANCE STOPPED	<ol style="list-style-type: none"> 1. The appliance can stop due to low voltage. In this situation check the voltage 2. If the appliance is overloaded, turn off the appliance and allow to cool down by taking off some materials from bowl
<ul style="list-style-type: none"> • If Cutter Mixing is not done at suitable quality • If any function of security doesn't work <ul style="list-style-type: none"> ➤ Do not use the appliance. 	

***If these problems are still going on, contact with our authorized service.**

CUTTER MIXER

G SPARE PART LIST- EXPLODING DRAWINGS



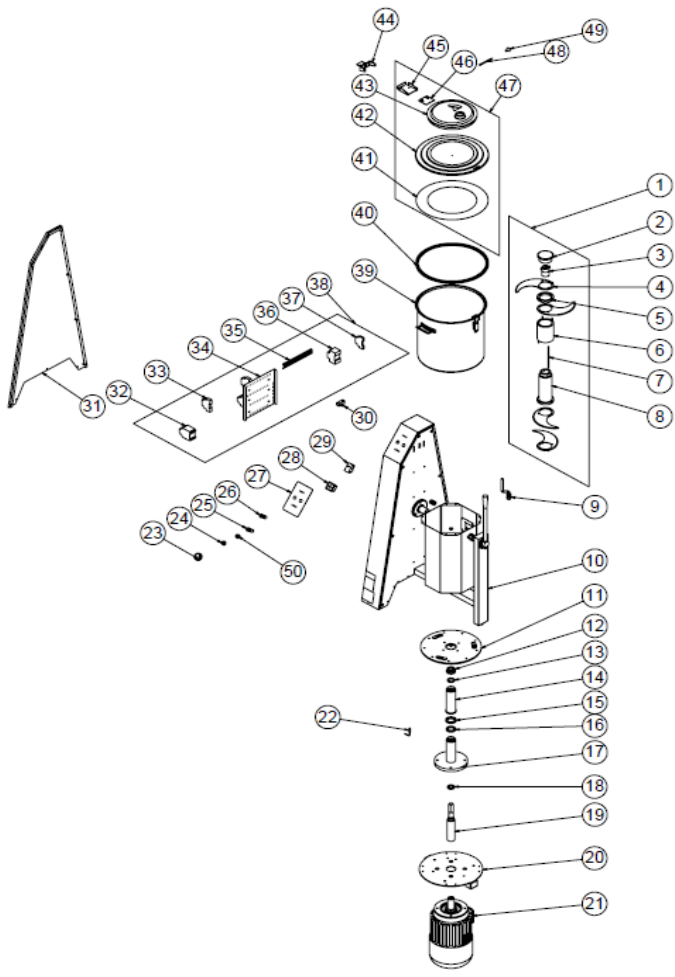
G SPARE PART LIST- EXPLODING DRAWINGS

PRODUCT CODE:SD.07		
NO	PRODUCT NAME	P.CODE
1	KNIFE SET	ARA-ERS.SD-0007
2	BLADE HOLDING ALUMINUM	YTL-ERS.SD-KS-0093
3	BODY BUSH	YTL-ERS.SD-KS-0022
4	OVAL KNIFE	M.BCK-SD-003
5	THIN KNIFE ALUMINUM	YDK-ERS.SD-CN-0003
6	THICK BLADE ALUMINUM	YDK-ERS.SD-CN-0002
7	KNIFE STUD	YTL-ERS.SD-KS-0048
8	KNIFE BODY	YDK-ERS.SD-CN-0001
9	SHAFT PIN	YTL-ERS.SD-KS-0024
10	ENGINE SHAFT PLASTIC	M.ENJ-ERS-PLS-SDM-015
11	FELT 20*37*10	M.CNT-KCE-013
12	BEARING (6904 ZZ)	M.RLM-NRM-043
13	BOILER TABLE SHEET	YSC-ERS.SD-LZ-0051
14	BUSH LOWER CASTING	HDK-ALM-SD-004
15	MAGNETIC SENSOR	M.ELK-SWC-KTG-001
16	ENGINE SHAFT	YTL-ERS.SD-KS-0015
17	FELT 35*52*10	M.CNT-KCE-012
18	FELT 30*42*7	M.CNT-KCE-003
19	ELECTRIC MOTOR	M.ELK-MTR-RSM-035
20	HOSE	HEL-MK-SPR-002
21	HANDLE	ERS.M.AKS-KLP-BKL-009
22	CHASSIS	-
23	BUTTON	M.ENJ-ERS-PLS-PS-018
24	BUTTON SOCKET	M.AKS-DGM-MUH-009
25	BUTTON SOCKET	M.AKS-DGM-MUH-010
26	RED BUTTON (MOMENTARY)	M.ELK-SLT-BTL-010
27	GREEN LIGHTED BUTTON	ERS.M.ELK-SLT-BTL-011
28	PANEL SHEET	YSC-ERS.SD-LZ-0077
29	SWITCH	M.ELK-SLT-PKO-015
30	TIME CLOCK	M.ELK-MEK-MTM-004
31	SWITCH	M.ELK-SWC-ERS-001
32	BOILER BOTTOM PLASTIC	M.ENJ-ERS-PLS-SDM-067
33	WIN (30*30)	M.MTS-SDM-004
34	COVER GASKET	M.CNT-ERS-043
35	COVER	ARA-ERS.SD-0008
36	COVER SHEET	YSC-ERS.SD-LZ-0044
37	BOILER COVER	M.ENJ-ERS-PLS-SDM-014
38	HINGE CONNECTION SHEET	YSC-ERS.SD-LZ-0078
39	COVER HINGE SHEET	YSC-ERS.SD-LZ-0052
40	HINGE SHAFT	YTL-ERS.SD-KS-0020
41	BODY HINGE SHEET	YSC-ERS.SD-LZ-0053
42	HANDLE	ERS.M.AKS-KLP-LUX-004
43	ELECTRICAL PANEL GROUP	M.ELK-PNO-SD-003
44	GZ1AN11 CONTACTOR	ERS.M.ELK-KNT-KNT-029
45	ENGINE PROTECTION LINING SHEET	M.ELK-SLT-MK-007
46	MANUAL PANEL SHEET	YSC-ERK.KD-LZ-0040
47	TIME RELAY (30 SECONDS)	ERS.M.ELK-KNT-ROL-006

CUTTER MIXER

48	CONTACTOR LC1D09M7	FRS.M.FLK-KNT-KNT-027
49	RIGHT SIDE COVER SHEET	YSC-ERS.SD-LZ-0054

G SPARE PART LIST- EXPLODING DRAWINGS



SD.09

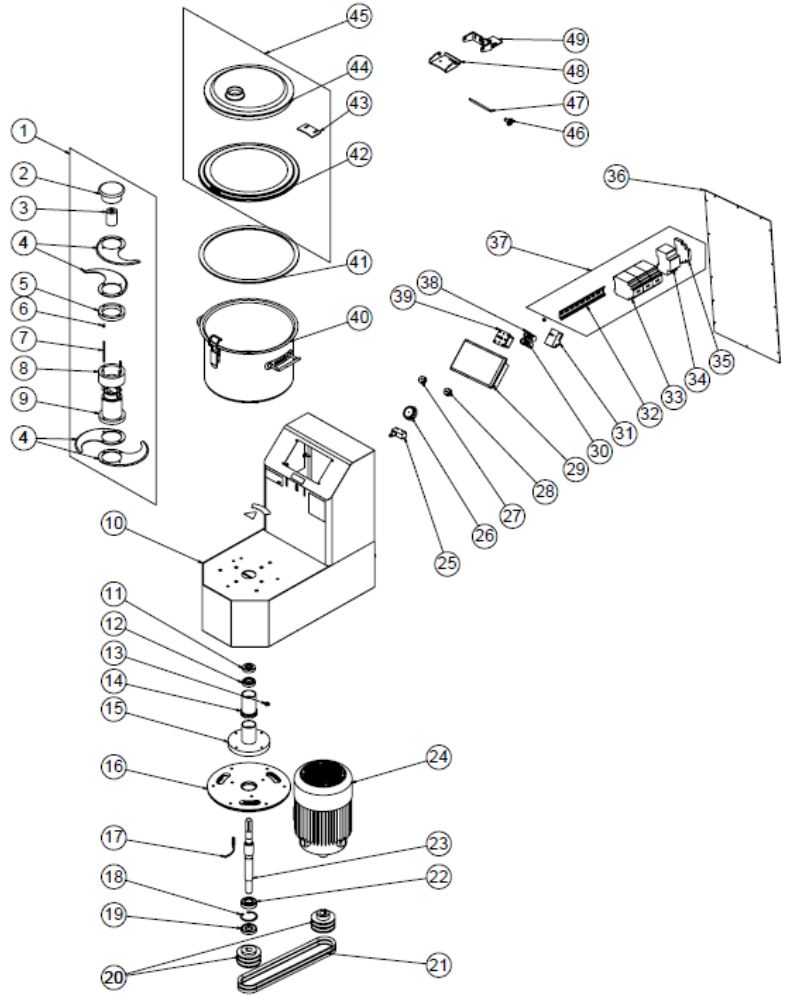
PRODUCT CODE:SD.09		
NO	PRODUCT NAME	P.CODE
1	KNIFE SET	ARA-ERS.SD-0010

2	BLADE HOLDING ALUMINUM	YTL-ERS.SD-KS-0092
3	BODY BUSH	YTL-ERS.SD-KS-0083
4	OVAL KNIFE	M.BCK-SD-023
5	THIN KNIFE ALUMINUM	YDK-ERS.SD-CN-0022
6	THICK BLADE ALUMINUM	YDK-ERS.SD-CN-0021
7	KNIFE STUD	YTL-ERS.SD-KS-0080
8	KNIFE BODY	YDK-ERS.SD-CN-0020
9	HOSE	HEL-MK-SPR-002
10	CHASSIS	-
11	BOILER BOTTOM PLASTIC	M.ENJ-ERS-PLS-SDM-071
12	ENGINE SHAFT PLASTIC	YTL-ERS.SD-KS-0091
13	FELT 30*42*7	M.CNT-KCE-038
14	SLEEVE SHAFT	YTL-ERS.SD-KS-0078
15	FELT 45*62*10	M.CNT-KCE-037
16	FELT 40*55*10	M.CNT-KCE-036
17	BUSH LOWER CASTING	HDK-ALM-SD-020
18	BEARING (6806 Z)	M.RLM-NRM-041
19	ENGINE SHAFT	YTL-ERS.SD-KS-0077
20	BOILER TABLE SHEET	YSC-ERS.SD-LZ-0067
21	ELECTRIC MOTOR	M.ELK-MTR-RSM-072
22	MAGNETIC SENSOR	M.ELK-SWC-KTG-001
23	BUTTON	M.ENJ-ERS-PLS-PS-018
24	BUTTON SOCKET	M.AKS-DGM-MUH-009
25	RED BUTTON (MOMENTARY)	M.ELK-SLT-BTL-010
26	GREEN LIGHTED BUTTON	ERS.M.ELK-SLT-BTL-011
27	PANEL SHEET	YSC-ERS.SD-LZ-0077
28	SWITCH	M.ELK-SLT-PKO-015
29	TIME CLOCK	M.ELK-MEK-MTM-004
30	SWITCH	M.ELK-SWC-ERS-001
31	LEFT SIDE COVER SHEET	YSC-ERS.SD-LZ-0064
32	CONTACTOR LC1D09M7	ERS.M.ELK-KNT-KNT-027
33	TIME RELAY (30 SECONDS)	ERS.M.ELK-KNT-ROL-006
34	MANUAL PANEL SHEET	YSC-ERK.KD-LZ-0040
35	AUTOMATIC RAIL	YEL-ERS.SD-KS-0005
36	ENGINE PROTECTION LINING SHEET	M.ELK-SLT-MK-008
37	GZ1AN11 CONTACTOR	ERS.M.ELK-KNT-KNT-029
38	ELECTRICAL PANEL GROUP	M.ELK-PNO-SD-008
39	BOILER (40*40)	M.MTS-SDM-012
40	COVER GASKET	M.CNT-ERS-044
41	COVER CIRCLE SHEET	YSC-ERS.SD-LZ-0066
42	COVER SHEET	YSC-ERS.SD-LZ-0071
43	BOILER COVER	M.ENJ-ERS-PLS-SDM-014
44	BODY HINGE SHEET	YSC-ERS.SD-LZ-0053
45	COVER HINGE SHEET	YSC-ERS.SD-LZ-0072
46	HINGE CONNECTION SHEET	YSC-ERS.SD-LZ-0079
47	COVER	ARA-ERS.SD-0009
48	HINGE SHAFT	YTL-ERS.SD-KS-0020
49	HANDLE	ERS.M.AKS-KLP-LUX-004

CUTTER MIXER

50	BUTTON SOCKET	M.AKS-DGM-MUH-010
----	---------------	-------------------

G SPARE PART LIST- EXPLODING DRAWINGS



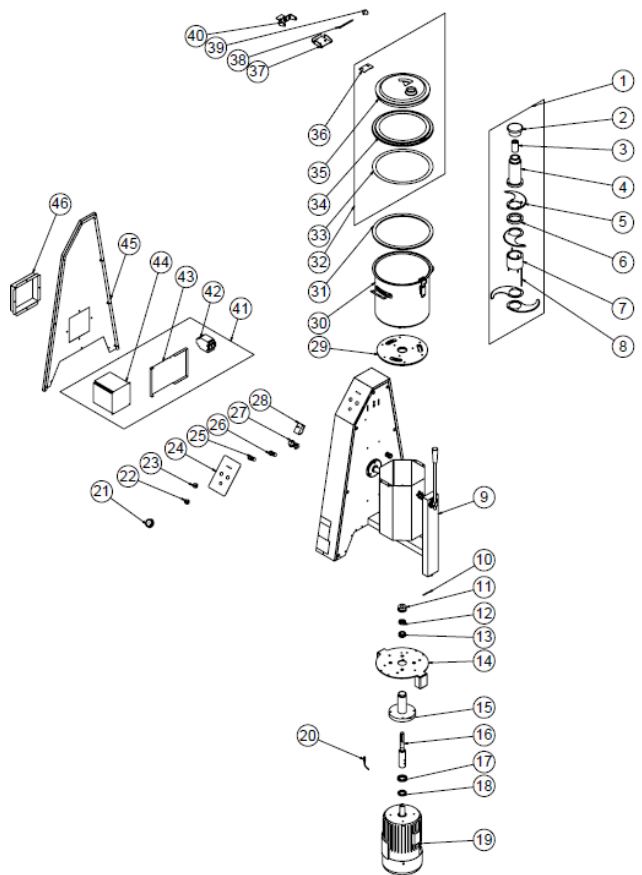
SD.15

PRODUCT CODE:SD.15		
NO	PRODUCT NAME	P.CODE
1	KNIFE SET	ARA-ERS.SD-0006

2	BLADE HOLDING ALUMINUM	YTL-ERS.SD-KS-0093
3	BLADE BUSH	YTL-ERS.SD-KS-0038
4	OVAL KNIFE	M.BCK-SD-003
5	THIN KNIFE ALUMINUM	YDK-ERS.SD-CN-0003
6	M5 INOX NUT	B-MKS-INX-AKB-M5
7	KNIFE STUD	YTL-ERS.SD-KS-0049
8	THICK BLADE ALUMINUM	YDK-ERS.SD-CN-0008
9	KNIFE BODY	YDK-ERS.SD-CN-0007
10	CHASSIS	-
11	FELT 20*42*10	M.CNT-KCE-016
12	BEARING (6004 2RS)	M.RLM-NRM-016
13	PLASTIC SCREW COVER	M.ENJ-ERS-PLS-SDM-069
14	barrel	YTL-ERS.SD-KS-0039
15	BUSH CASTING	YDK-ERS.SD-CN-0036
16	BOILER BOTTOM PLASTIC	M.ENJ-ERS-PLS-SDM-067
17	MAGNETIC SENSOR	M.ELK-SWC-KTG-001
18	RING 471-25	B-SEG-SYH-005
19	FELT 25*52*10	M.CNT-KCE-015
20	SLEEVE PULLEY	YDK-ERS.SD-CN-0016
21	STRAP (13*850)	M.KYS-VKY-005
22	BEARING (6205 2RS)	M.RLM-NRM-029
23	SLEEVE SHAFT	YTL-ERS.SD-KS-0028
24	ELECTRIC MOTOR	M.ELK-MTR-RSM-022
25	SWITCH	M.ELK-SWC-ERS-001
26	BUTTON	M.ENJ-ERS-PLS-PS-018
27	BUTTON SOCKET	M.AKS-DGM-MUH-010
28	BUTTON SOCKET	M.AKS-DGM-MUH-009
29	PANEL SHEET	YSC-ERS.SH-LZ-0074
30	RED BUTTON (MOMENTARY)	M.ELK-SLT-BTL-010
31	TIME CLOCK	M.ELK-MEK-MTM-004
32	AUTOMATIC RAIL	YEL-ERS.SD-LZ-0004
33	CONTACTOR	M.ELK-KNT-KNT-009
34	SWITCH	M.ELK-SLT-MK-001
35	CONTACTOR	ERS.M.ELK-KNT-KNT-010
36	PANEL BACK SHEET	YSC-ERS.SD-PN-0021
37	ELECTRICAL PANEL GROUP	M.ELK-PNO-SD-005
38	GREEN LIGHTED BUTTON	ERS.M.ELK-SLT-BTL-011
39	SWITCH	M.ELK-SLT-PKO-015
40	BOILER (30*22)	M.MTS-ERS-SDM-005
41	COVER GASKET	M.ENJ-ERS-LST-041
42	COVER SHEET	YSC-ERS.SD-LZ-0044
43	HINGE CONNECTION SHEET	YSC-ERS.SD-LZ-0078
44	BOILER COVER	M.ENJ-ERS-PLS-SDM-014
45	COVER	ARA-ERS.SD-0008
46	HANDLE	ERS.M.AKS-KLP-LUX-004
47	HINGE SHAFT	YTL-ERS.SD-KS-0020
48	COVER HINGE SHEET	YSC-ERS.SD-LZ-0048
49	BODY HINGE SHEET	YSC-ERS.SD-LZ-0053

CUTTER MIXER

G SPARE PART LIST- EXPLODING DRAWINGS



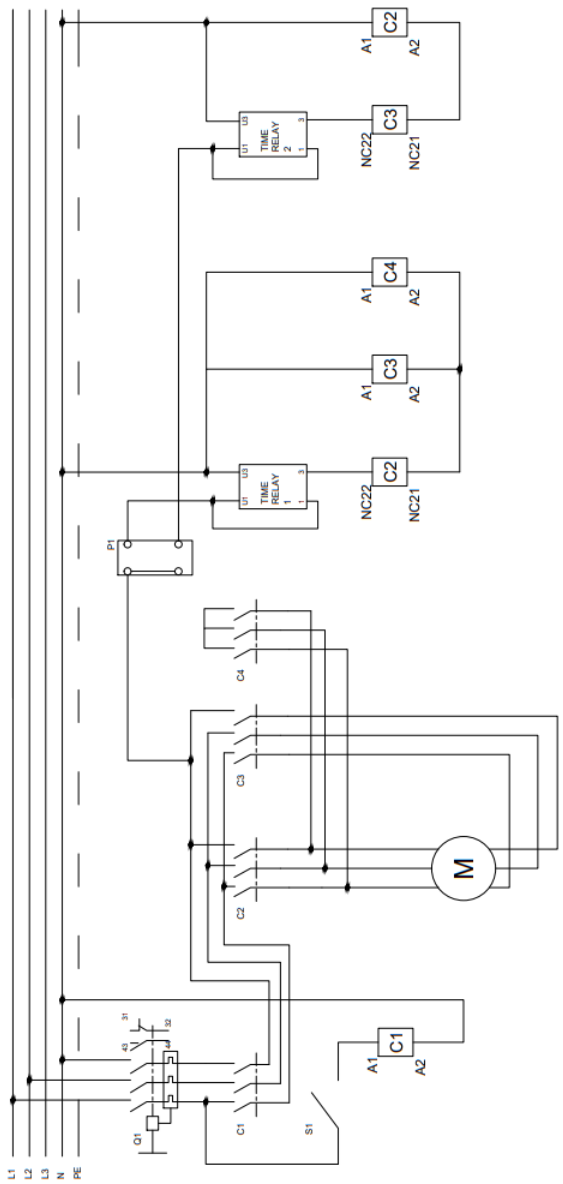
PRODUCT CODE:SD.07-22		
NO	PRODUCT NAME	P.CODE
1	KNIFE SET	ARA-ERS.SD-0007
2	BLADE HOLDING ALUMINUM	YTL-ERS.SD-KS-0093
3	BODY BUSH	YTL-ERS.SD-KS-0022
4	KNIFE BODY	YDK-ERS.SD-CN-0001

5	OVAL KNIFE	M.BCK-SD-003
6	THIN KNIFE ALUMINUM	YDK-ERS.SD-CN-0003
7	THICK BLADE ALUMINUM	YDK-ERS.SD-CN-0002
8	KNIFE STUD	YTL-ERS.SD-KS-0048
9	CHASSIS	-
10	SHAFT PIN	YTL-ERS.SD-KS-0024
11	ENGINE SHAFT PLASTIC	M.ENJ-ERS-PLS-SDM-015
12	FELT 20*37*10	M.CNT-KCE-013
13	BEARING (6904 ZZ)	M.RLM-NRM-043
14	BOILER TABLE SHEET	YSC-ERS.SD-LZ-0051
15	BUSH LOWER CASTING	HDK-ALM-SD-004
16	ENGINE SHAFT	YTL-ERS.SD-KS-0015
17	FELT 35*52*10	M.CNT-KCE-012
18	FELT 30*42*7	M.CNT-KCE-003
19	ELECTRIC MOTOR	M.ELK-MTR-RSM-007
20	MAGNETIC SENSOR	M.ELK-SWC-KTG-001
21	BUTTON	M.ENJ-ERS-PLS-PS-018
22	BUTTON SOCKET	M.AKS-DGM-MUH-009
23	BUTTON SOCKET	M.AKS-DGM-MUH-010
24	PANEL SHEET	YSC-ERS.SD-LZ-0077
25	RED BUTTON (MOMENTARY)	M.ELK-SLT-BTL-010
26	GREEN LIGHTED BUTTON	ERS.M.ELK-SLT-BTL-011
27	POTENTIOMETER	M.ELK-PMT-4,7
28	TIME CLOCK	M.ELK-MEK-MTM-004
29	BOILER BOTTOM PLASTIC	M.ENJ-ERS-PLS-SDM-067
30	WIN (30*30)	M.MTS-SDM-004
31	COVER GASKET	M.CNT-ERS-043
32	COVER	ARA-ERS.SD-0008
33	COVER CIRCLE SHEET	YSC-ERS.SD-LZ-0069
34	COVER SHEET	YSC-ERS.SD-LZ-0044
35	BOILER COVER	M.ENJ-ERS-PLS-SDM-014
36	HINGE CONNECTION SHEET	YSC-ERS.SD-LZ-0078
37	COVER HINGE SHEET	YSC-ERS.SD-LZ-0052
38	HINGE SHAFT	YTL-ERS.SD-KS-0020
39	HANDLE	ERS.M.AKS-KLP-LUX-004
40	BODY HINGE SHEET	YSC-ERS.SD-LZ-0053
41	ELECTRICAL PANEL GROUP	M.ELK-PNO-SD-009
42	CONTACTOR LC1D09M7	ERS.M.ELK-KNT-KNT-027
43	PANEL SHEET	YSC-ERK.KD-LZ-0041
44	MOTORCYCLE DRIVER	M.ELK-SRC-004
45	LEFT SIDE COVER SHEET	YSC-ERS.SD-LZ-0084
46	SPEED CONTROL COVER SHEET	YSC-ERS.SD-LZ-0085

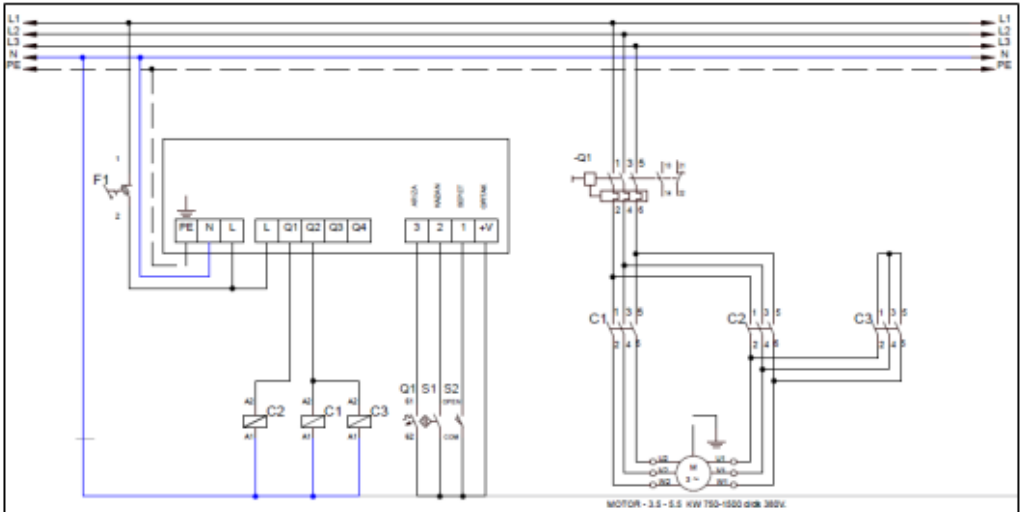
H ELECTRIC CIRCUIT SCHEMA

CUTTER MIXER

SD.07



H ELECTRIC CIRCUIT SCHEMA



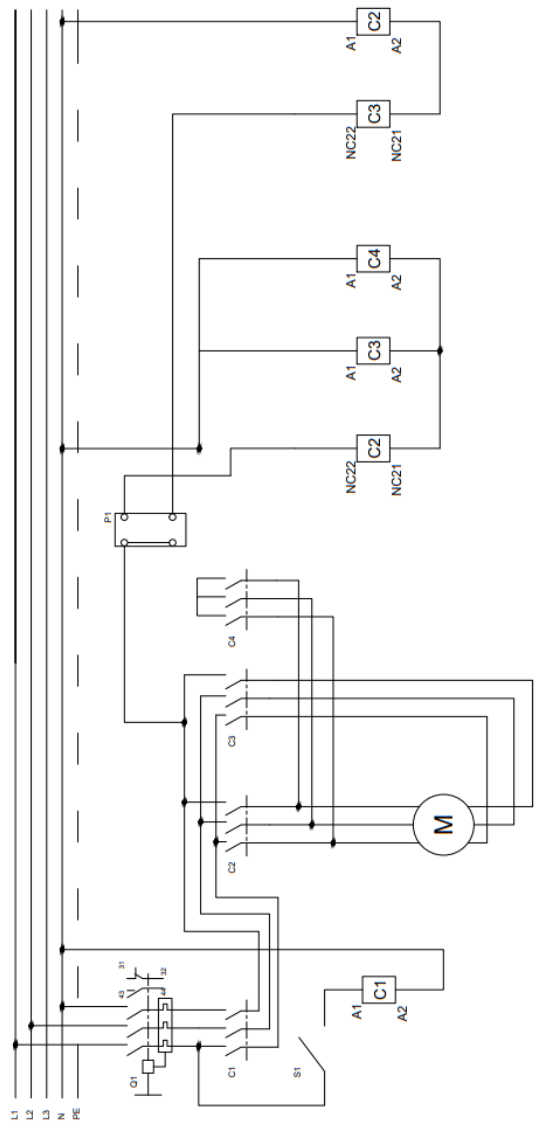
PRODUCT CODE	POWER (KW)	RPM	VOLTAGE
SD.09	3,5/5,5	750/1500	380

I	Q1	F1	C1	C2-C3	M	S1	S2	F1
Terminal	Motor Safety Relay	Control Panel Fuse	2.Speed Contactor	1.Speed Contactor	Motor	Basket Magnetic Sensor	Bowl Magnetic Switch	Control Panel 1X4A

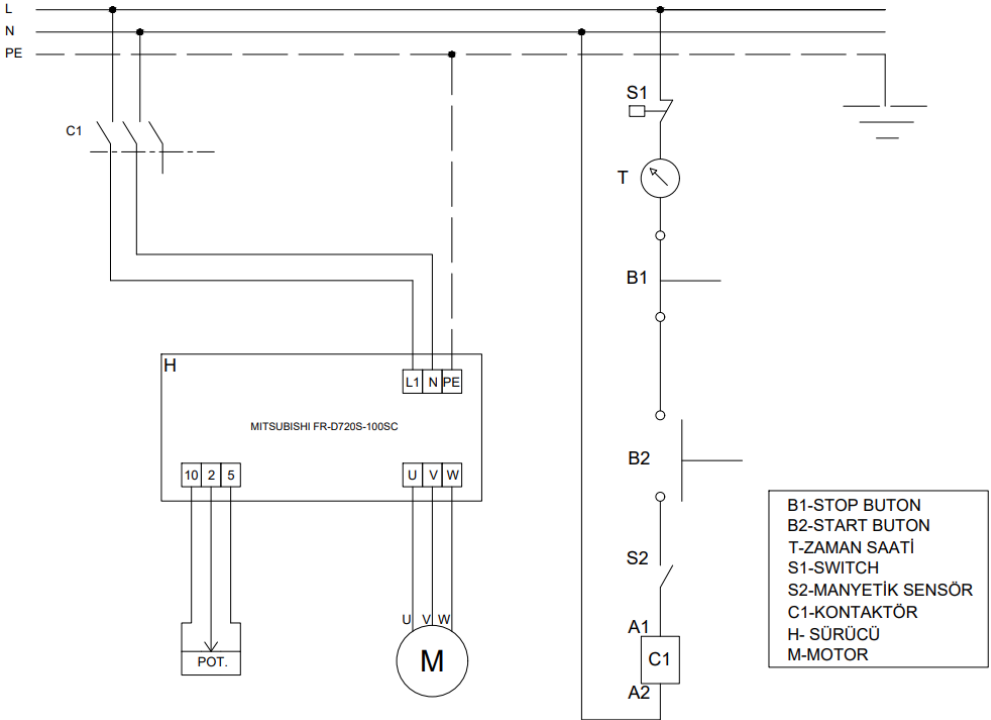
CUTTER MIXER

H ELECTRIC CIRCUIT SCHEMA

SD.15



H ELECTRIC CIRCUIT SCHEMA



- B1 - STOP BUTON
- B2 - START BUTON
- T - TIME CLOCK
- S1 - SWITCH
- S2 - MAGNETIC SENSOR
- C1 - CONTACTOR
- H - DRIVER
- M - ENGINE

SD.07-22