



SPIRAL DOUGH MIXER

CONTENTS

A	GENERAL INFORMATION	Page 2
A1	PRODUCT DESCRIPTION	Page 3
A2	TECHNICAL INFORMATION.....	Page 3
A3	TRANSPORTATION	Page 4
A4	UNPACKING	Page 4
B	INSTALLATION	Page 4
C	SAFETY INSTRUCTIONS.....	Page 5
D	OPERATION	Page 6
E	CLEANING & MAINTENANCE.....	Page 7
F	TROUBLESHOOTING	Page 8
G	SPARE PART LIST-EXPLODING DRAWING	Page 9
H	ELECTRIC CIRCUIT SCHEMA	Page 24

A GENERAL INFORMATION

Before installing the appliance, read operation and maintenance instructions carefully. Wrong installation and part changing may damage the product or may cause injury on people. These are not in our company's responsibility to damage the appliance intentionally, negligence, detriments because of disobeying instructions and regulations, wrong connections. Unauthorized intervention to appliance invalidates the warranty.

1. This instruction manual should be kept in a safe place for future reference.
2. **Installation should be made in accordance with ordinances and security rules of that country by a qualified service personnel.**
3. This appliance has to be used by trained person.
4. Please turn off the appliance immediately in the event of malfunction or failure. The appliance should be repaired only by authorized service personnel. Please demand original spare part.



SPIRAL DOUGH MIXER

A1 PRODUCT DESCRIPTION

*Professional Spiral Dough Mixer ,that provides high efficiency has been designed to be used in industrial kitchens.

Product Code	Dimensions (mm)	Weight (kg)	Packaging Dimensions (mm)
SH.01	432x792x987	174	570x910x1180
SH.02	544x912x1065	208	680x1030x1230
SH.03	637x1040x1105	240	710x1200x1260
SH.04	433x756x933	160	490x850x1030
SH.05	433x790x990	174	570x910x1180
SH.06	544x911x1065	202	680x1030x1230

A2 TECHNICAL INFORMATION

Product Code	Bowl Dimensions (mm)	Bowl Capacity (for flour) (kg)	Dough Capacity (kg)	Motor (Kw)	Operating Voltage (V)	Cable (mm ²)	Fuse (A)
SH.01	400x260	12	30	1 / 1,7	380	5x1,5	25
SH.02	500x300	20	50	1.5 / 2.5	380	5x1,5	32
SH.03	600x315	35	60	1.5 / 2.5	380	5x1,5	32
SH.04	360x210	7	15	1,1	380	5x1,5	25
SH.05	400x260	12	30	1,5	380	5x1,5	32
SH.06	500x300	20	50	1,5	380	5x1,5	32

Note: SH.04, SH.05, SH.06 Operates in purpose of kneading pizza dough. Not advised to use kneading hard dough.

A3 TRANSPORTATION

*This appliance can not be moved by hand from area to area. It must be moved on pallet with forklift truck.

A4 UNPACKING

*Please unpack the package according to the security codes and ordinances of current country and get rid from the pack. Parts which contacts with food are produced by stainless steel. All plastic parts are marked by material's symbol.

*Please check that all the parts of appliance had come completely and if they are damaged or not during the shipping.

B INSTALLATION

*Please place the product to straight and sturdy ground, please take necessary steps against possibility of overturn.

*Technician who will serve for installation and service for the appliance must be professional on this subject and must have installation and service licenses by the company.

*Connection to Electric Power Supply must be done by authorized person.

*Please be sure that the voltage connected to appliance must be equal with the voltage which is on appliance's label.












This appliance must be connected to an earthed outlet in accordance with safety rules and standards.

*Appliance's earthing must be connected to earthing line on panel which is nearest to electric installation.

*Connection to the main fuse and leak current fuse must be done in accordance with the current regulations.

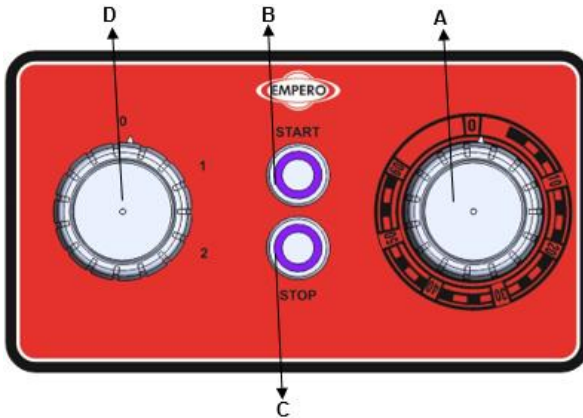
SPIRAL DOUGH MIXER

C SAFETY INSTRUCTIONS

-  *Do not use the appliance in insufficient lighted place.
-  *Do not touch the moving attachments while the appliance operates.
-  *Do not install the appliance in the presence of flammable or explosive materials.
-  *Do not operate the appliance when the machine is empty.
-  *Do not load so less or more than appliance's capacity.
-  *Do not attempt to use the appliance without suitable protective equipments.
-  *Because of any reason if there is a fire or flame flare where the appliance is used, turn off all gas valves and electric contactor switch quickly and use fire extinguisher. Never use water to extinguish the fire.
-  *All the damages because of not having earthing connection will not be on warranty.
-  *Do not place your hand into the bowl while the appliance is going on dough kneading. Otherwise mixer may damage you seriously.

D OPERATION

*Control Panel;



- A : Time setting
- B : Start
- C : Stop
- D : Speed Setting

*Operating;

- Before operating, clean the bowl with a wet cloth and dry.
- Please lift up bowl lid and put flour as much as capacity. Please add enough water into the bowl. If quantity of water is not enough, add water through lid space without lifting the lid.
- For operating the appliance and press the START BUTTON.
- If the appliance operates with 380 V, while plugging during first operation, pay attention to be operated on the direction of arrow.
- For adjusting the speed of the mixer, set (1) for low and set (2) for high.
- Use "timer" to set desired time using the sett left or right. When time expires, the appliance will stop.
- Turn off the timer to operate the appliance pressing stop button.
- After the operation completed, unplug the power supply.

SPIRAL DOUGH MIXER

E CLEANING & MAINTENANCE

➤ **CLEANING AND MAINTENANCE AFTER EVERY USE**

- Clean outer surface of appliance ,mixer and bowl with hot water and then dry.
- Always turn off the appliance and disconnect from the power supply before cleaning.
- Do not use abrasive cleaning chemicals as these can leave harmful residues.
- Do not clean the appliance by spraying water directly,otherwise electric motor may get damaged.

➤ **PERIODIC CLEANING AND MAINTENANCE**

- Get the periodic maintenance of the appliance once in every 15 days.
- Maintenance should be done by qualified person.
- Spiral Dough Mixer requires low maintenance (Motor and ball bearings are lubricated).
- Maintenance of the appliance's contactor should be done by compressed air according to frequency of use.

F TROUBLESHOOTING

THE APPLIANCE DOESN'T OPERATE	<ol style="list-style-type: none"> 1. Check if the appliance is plugged in. 2. Check the electrical connections and voltage. 3. Check appliance's bowl safety lid. 4. Check the urgent stop button.
--------------------------------------	---

THE APPLIANCE IS NOISY	<ol style="list-style-type: none"> 1. Check if there is enough water and flour in dough bowl. 2. Check the mixer. 3. If the motor is noisy, stop it and call authorized service.
-------------------------------	---

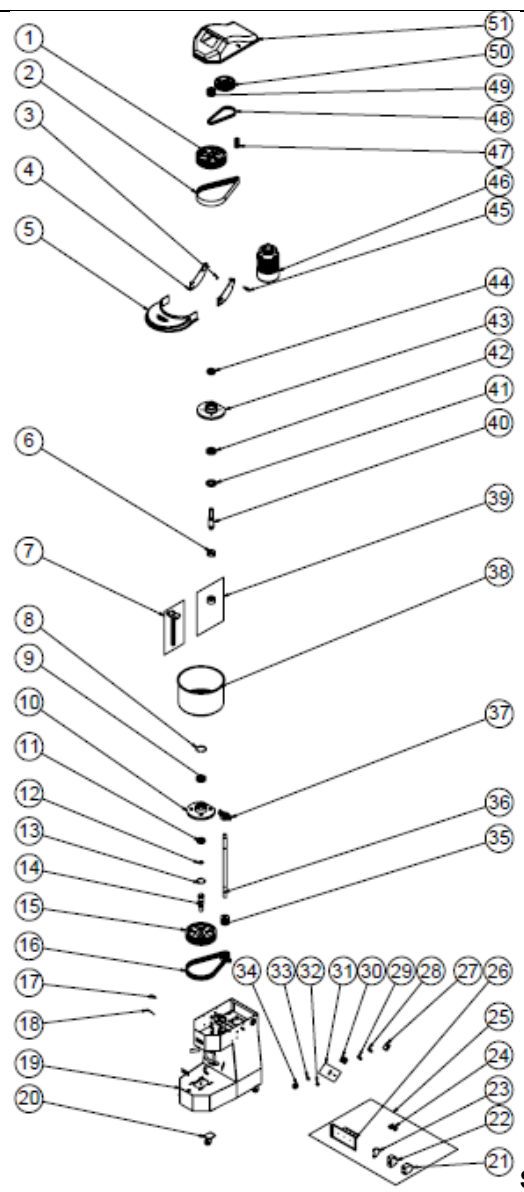
THE APPLIANCE STOPPED	<ol style="list-style-type: none"> 1. The appliance can stop due to low voltage. In this situation check the voltage. 2. The appliance may stop when it is overloaded. In this situation allow the motor to cool by taking off some materials from bowl. 3. If motor error indicator signals, fix the error and operate.
------------------------------	---

<ul style="list-style-type: none"> • If dough kneading is not done at suitable quality • If any function of security doesn't work <ul style="list-style-type: none"> ➤ Do not use the appliance.
--

***If these problems are still going on, contact with our authorized service.**

SPIRAL DOUGH MIXER

G SPARE PART LIST-EXPLODING DRAWING



SH.01

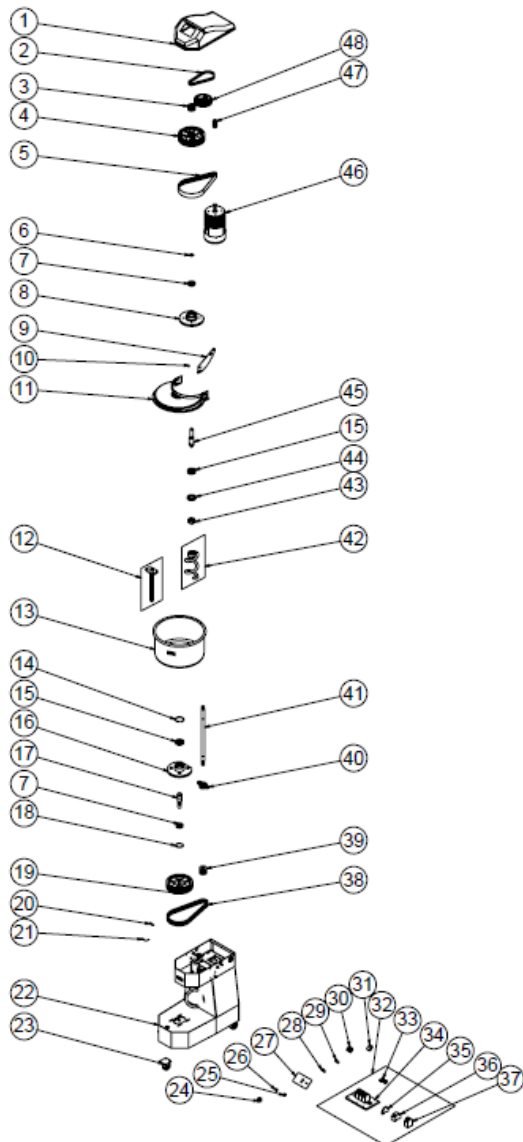
G SPARE PART LIST-EXPLODING DRAWING

PRODUCT CODE:SH.01		
NO	PRODUCT NAME	P.CODE
1	BIG PULLEY	YDK-ERS.SH-CN-0014
2	22 PJ 1168 STRAP	M.KYS-TKY-005
3	MAGNET	M.MIK-ERS-004
4	MICA BINDING SHEET	YSC-ERS.SH-LZ-0001
5	BOILER COVER	M.ENJ-ERS-FLK-019
6	STAMP	YTL-ERS.SH-KS-0007
7	PRE-MIXER	ARA-ERS.SH-0005
8	RING 472-85	B-SEG-SYH-021
9	BEARING (6009 ZZ)	M.RLM-NRM-035
10	LOWER BUSH	YDK-ERS.SH-CN-0010
11	BEARING (6207 ZZ)	M.RLM-NRM-034
12	RING 471-35	B-SEG-SYH-019
13	RING 472-72	B-SEG-SYH-020
14	LOWER SLEEVE SHAFT	YTL-ERS.SH-KS-0032
15	BIG PULLEY	YDK-ERS.SH-CN-0024
16	STRAP (13*1100)	M.KYS-VKY-018
17	MUHAFAZA VIDASI	YTL-ERS.SH-KS-0009
18	MAGNETIC SENSOR	M.ELK-SWC-KTG-001
19	CHASSIS	-
20	WHEEL WITH BRAKE	M.AKS-TKR-PSF-002
21	CONTACTOR LC1D09M7	ERS.M.ELK-KNT-KNT-027
22	ENGINE PROTECTION LINING SHEET	M.ELK-SLT-MK-006
23	GZ1AN11 CONTACTOR	ERS.M.ELK-KNT-KNT-029
24	EMERGENCY STOP BUTTON	M.ELK-SLT-BTL-003
25	ELECTRICAL PANEL GROUP	M.ELK-PNO-SH-001
26	ELECTRICAL PANEL SHEET	YSC-ERK.KD-LZ-0028
27	TIME CLOCK	M.ELK-MEK-MTM-004
28	RED BUTTON (MOMENTARY)	M.ELK-SLT-BTL-010
29	GREEN LIGHTED BUTTON	ERS.M.ELK-SLT-BTL-011
30	SWITCH	M.ELK-SLT-PKO-015
31	PANEL LABEL	M.AKS-ETK-LKS-ERS-SH-002
32	BUTTON SOCKET	M.AKS-DGM-MUH-009
33	BUTTON SOCKET	M.AKS-DGM-MUH-010
34	BUTTON	M.ENJ-ERS-PLS-PS-018
35	LOWER PULLEY	YDK-ERS.SH-CN-0012
36	MIDDLE SHAFT	YTL-ERS.SH-KS-0039
37	BEARING (UCFL 206)	M.RLM-YTK-001
38	Dough BOILER (40*26)	M.MTS-ERS-HY-007
39	Dough Mixer	ARA-ERS.SH-0004
40	UPPER SLEEVE SHAFT	YTL-ERS.SH-KS-0033
41	FELT 48*90*10	M.CNT-KCE-030

SPIRAL DOUGH MIXER

42	BEARING (6009 ZZ)	M.RLM-NRM-035
43	UPPER SLEEVE	YDK-ERS.SH-CN-0009
44	BEARING (6207 ZZ)	M.RLM-NRM-034
45	HINGE SHAFT	YTL-ERS.SH-KS-0002
46	ELECTRIC MOTOR	M.ELK-MTR-RSM-020
47	ENGINE PULLEY	YTL-ERS.SH-KS-0038
48	STRAP (13*700)	M.KYS-VKY-017
49	SMALL PULLEY	YDK-ERS.SH-CN-0011
50	UPPER PULLEY	YDK-ERS.SH-CN-0013
51	TOP COVER	M.ENJ-ERS-PLS-SH-001

G SPARE PART LIST-EXPLODING DRAWING



SH.02

SPIRAL DOUGH MIXER

G SPARE PART LIST-EXPLODING DRAWING

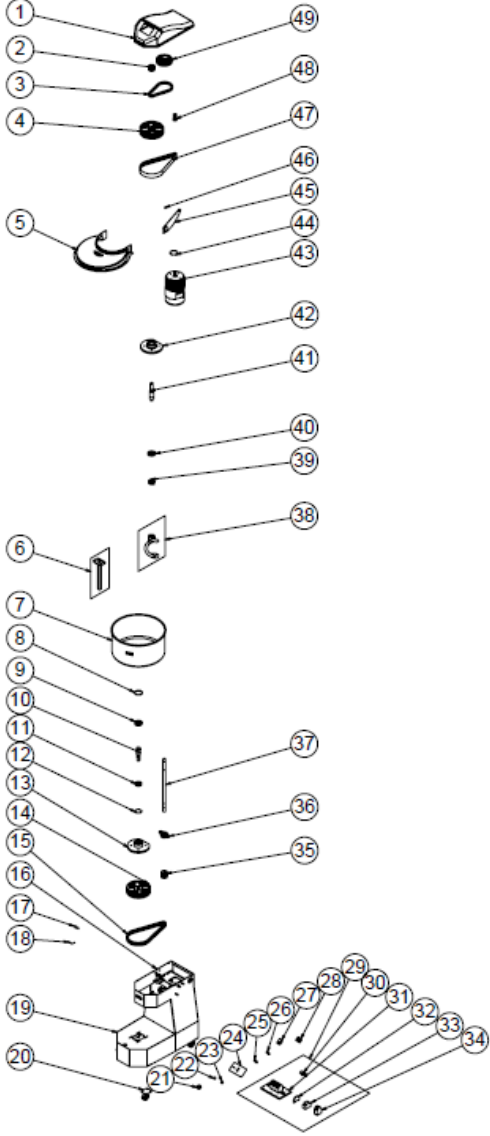
PRODUCT CODE:SH.02		
NO	PRODUCT NAME	P.CODE
1	TOP COVER	M.ENJ-ERS-PLS-SH-002
2	STRAP (13*700)	M.KYS-VKY-017
3	SMALL PULLEY	YDK-ERS.SH-CN-0011
4	BIG PULLEY	YDK-ERS.SH-CN-0014
5	22 PJ 1168 STRAP	M.KYS-TKY-006
6	RING 471-35	B-SEG-SYH-019
7	BEARING (6207 ZZ)	M.RLM-NRM-034
8	UPPER SLEEVE	YDK-ERS.SH-CN-0009
9	MICA BINDING SHEET	YSC-ERS.SH-LZ-0009
10	MAGNET	M.MIK-ERS-004
11	BOILER COVER	M.ENJ-ERS-FLK-020
12	PRE-MIXER	ARA-ERS.SH-0006
13	Dough BOILER (50*29)	M.MTS-ERS-HY-008
14	RING 472-72	B-SEG-SYH-020
15	BEARING (6009 ZZ)	M.RLM-NRM-035
16	LOWER BUSH	YDK-ERS.SH-CN-0010
17	LOWER SLEEVE SHAFT	YTL-ERS.SH-KS-0032
18	RING 472-85	B-SEG-SYH-021
19	BIG PULLEY	YDK-ERS.SH-CN-0024
20	MUHAFAZA VIDASI	YTL-ERS.SH-KS-0009
21	MAGNETIC SENSOR	M.ELK-SWC-KTG-001
22	CHASSIS	-
23	WHEEL WITH BRAKE	M.AKS-TKR-PSF-004
24	BUTTON	M.ENJ-ERS-PLS-PS-018
25	BUTTON SOCKET	M.AKS-DGM-MUH-009
26	BUTTON SOCKET	M.AKS-DGM-MUH-010
27	PANEL SHEET	YSC-ERS.SH-LZ-0074
28	RED BUTTON (MOMENTARY)	M.ELK-SLT-BTL-010
29	GREEN LIGHTED BUTTON	ERS.M.ELK-SLT-BTL-011

SPIRAL DOUGH MIXER

30	SWITCH	M.ELK-SLT-PKO-015
31	TIME CLOCK	M.ELK-MEK-MTM-004
32	ELECTRICAL PANEL GROUP	M.ELK-PNO-SH-003
33	EMERGENCY STOP BUTTON	M.ELK-SLT-BTL-003
34	ELECTRICAL PANEL SHEET	YSC-ERK.KD-LZ-0049
35	GZ1AN11 CONTACTOR	ERS.M.ELK-KNT-KNT-029
36	ENGINE PROTECTION LINING SHEET	M.ELK-SLT-MK-007
37	CONTACTOR LC1D09M7	ERS.M.ELK-KNT-KNT-027
38	STRAP (13*1175)	M.KYS-VKY-013
39	LOWER PULLEY	YDK-ERS.SH-CN-0012
40	BEARING (UCFL 206)	M.RLM-YTK-001
41	MIDDLE SHAFT	YTL-ERS.SH-KS-0040
42	MIXER	ARA-ERS.SH-0007
43	STAMP	YTL-ERS.SH-KS-0007
44	FELT 48*90*10	M.CNT-KCE-030
45	UPPER SLEEVE SHAFT	YTL-ERS.SH-KS-0033
46	ELECTRIC MOTOR	M.ELK-MTR-RSM-035
47	ENGINE PULLEY	YTL-ERS.SH-KS-0038
48	UPPER PULLEY	YDK-ERS.SH-CN-0013

SPIRAL DOUGH MIXER

G SPARE PART LIST-EXPLODING DRAWING



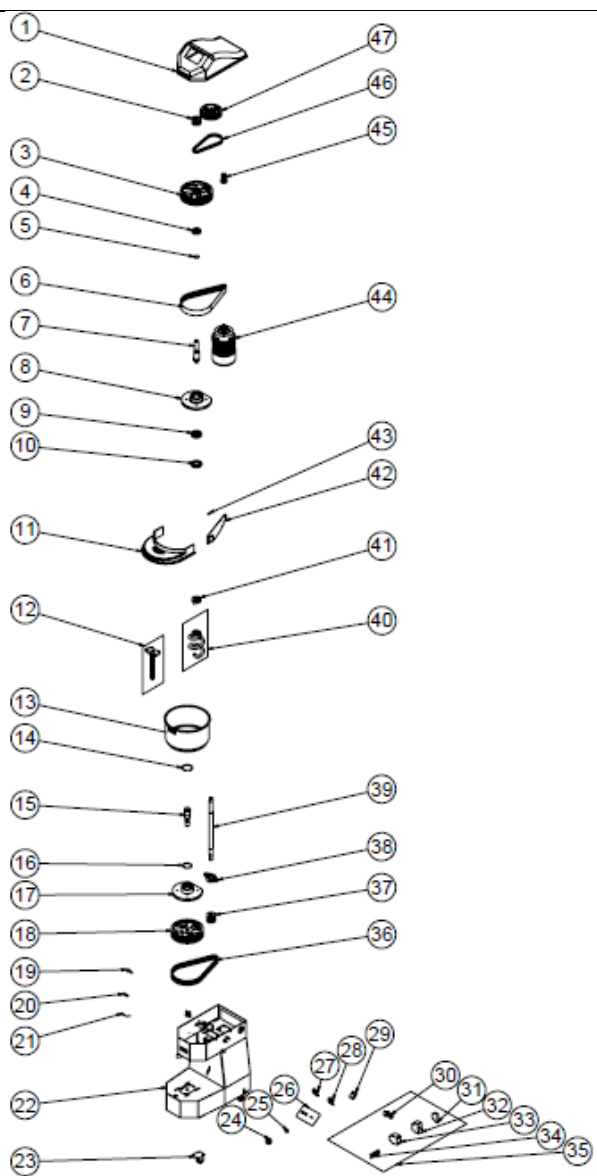
SH.03

G SPARE PART LIST-EXPLODING DRAWING

PRODUCT CODE:SH.03		
NO	PRODUCT NAME	P.CODE
1	TOP COVER	M.ENJ-ERS-PLS-SH-003
2	SMALL PULLEY	YDK-ERS.SH-CN-0011
3	STRAP (13*750)	M.KYS-VKY-021
4	BIG PULLEY	YDK-ERS.SH-CN-0014
5	BOILER COVER	M.ENJ-ERS-FLK-021
6	PRE-MIXER	ARA-ERS.SH-0008
7	Dough BOILER (60*31)	M.MTS-ERS-HY-009
8	RING 472-72	B-SEG-SYH-020
9	BEARING (6009 ZZ)	M.RLM-NRM-035
10	LOWER SLEEVE SHAFT	YTL-ERS.SH-KS-0032
11	BEARING (6207 ZZ)	M.RLM-NRM-034
12	RING 472-85	B-SEG-SYH-021
13	LOWER BUSH	YDK-ERS.SH-CN-0010
14	BIG PULLEY	YDK-ERS.SH-CN-0024
15	STRAP (13*1275)	M.KYS-VKY-030
16	MUHAFAZA VIDASI	YTL-ERS.SH-KS-0009
17	HINGE SHAFT	YTL-ERS.SH-KS-0002
18	MAGNETIC SENSOR	M.ELK-SWC-KTG-001
19	CHASSIS	-
20	WHEEL WITH BRAKE	M.AKS-TKR-PSF-004
21	BUTTON	M.ENJ-ERS-PLS-PS-018
22	BUTTON SOCKET	M.AKS-DGM-MUH-009
23	BUTTON SOCKET	M.AKS-DGM-MUH-010
24	PANEL SHEET	YSC-ERS.SH-LZ-0074
25	RED BUTTON (MOMENTARY)	M.ELK-SLT-BTL-010
26	GREEN LIGHTED BUTTON	ERS.M.ELK-SLT-BTL-011
27	TIME CLOCK	M.ELK-MEK-MTM-004
28	SWITCH	M.ELK-SLT-PKO-015
29	ELECTRICAL PANEL GROUP	M.ELK-PNO-SH-003
30	EMERGENCY STOP BUTTON	M.ELK-SLT-BTL-003
31	ELECTRICAL PANEL SHEET	YSC-ERK.KD-LZ-0049
32	GZ1AN11 CONTACTOR	ERS.M.ELK-KNT-KNT-029
33	ENGINE PROTECTION LINING SHEET	M.ELK-SLT-MK-007
34	CONTACTOR LC1D09M7	ERS.M.ELK-KNT-KNT-027
35	LOWER PULLEY	YDK-ERS.SH-CN-0012
36	BEARING (UCFL 206)	M.RLM-YTK-001
37	MIDDLE SHAFT	YTL-ERS.SH-KS-0040
38	MIXER	ARA-ERS.SH-0009
39	STAMP	YTL-ERS.SH-KS-0007
40	FELT 48*90*10	M.CNT-KCE-030
41	UPPER SLEEVE SHAFT	YTL-ERS.SH-KS-0035
42	UPPER SLEEVE	YDK-ERS.SH-CN-0009
43	ELECTRIC MOTOR	M.ELK-MTR-RSM-035
44	RING 471-35	B-SEG-SYH-019
45	MICA BINDING SUPPORT SHEET	YSC-ERS.SH-LZ-0053
46	MAGNET	M.MIK-ERS-004
47	22 PJ 1168 STRAP	M.KYS-TKY-007
48	ENGINE PULLEY	YTL-ERS.SH-KS-0038
49	UPPER PULLEY	YDK-ERS.SH-CN-0013

SPIRAL DOUGH MIXER

G SPARE PART LIST-EXPLODING DRAWING



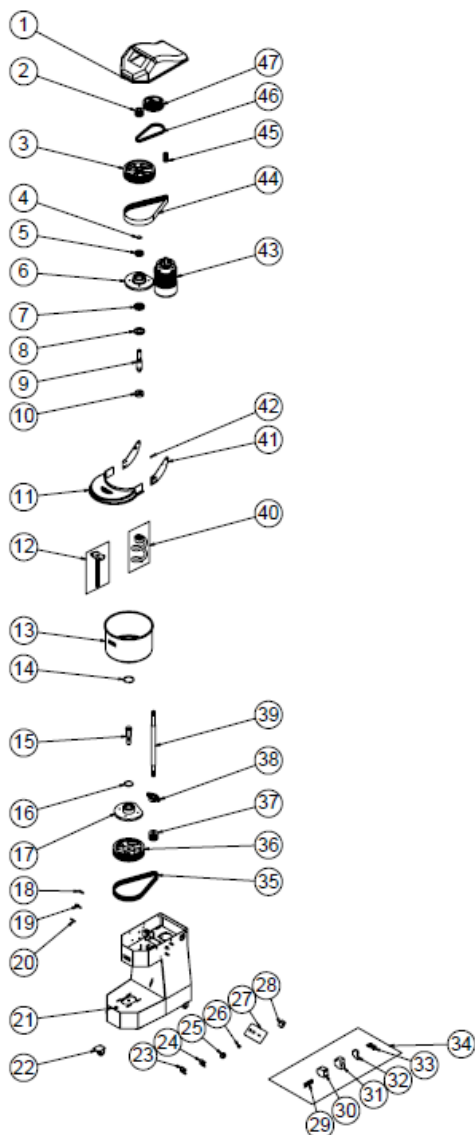
SH.04

G SPARE PART LIST-EXPLODING DRAWING

PRODUCT CODE:SH.04		
NO	PRODUCT NAME	P.CODE
1	TOP COVER	M.ENJ-ERS-PLS-SH-001
2	SMALL PULLEY	YDK-ERS.SH-CN-0011
3	BIG PULLEY	YDK-ERS.SH-CN-0014
4	BEARING (6207 ZZ)	M.RLM-NRM-034
5	RING 471-35	B-SEG-SYH-019
6	22 PJ 1168 STRAP	M.KYS-TKY-005
7	UPPER SLEEVE SHAFT	YTL-ERS.SH-KS-0033
8	UPPER SLEEVE	YDK-ERS.SH-CN-0009
9	BEARING (6009 ZZ)	M.RLM-NRM-035
10	FELT 48*90*10	M.CNT-KCE-030
11	BOILER COVER	M.ENJ-ERS-FLK-022
12	PRE-MIXER	ARA-ERS.SH-0010
13	Dough BOILER (36.5*20.5)	M.MTS-ERS-HY-010
14	RING 472-85	B-SEG-SYH-021
15	LOWER SLEEVE SHAFT	YTL-ERS.SH-KS-0032
16	RING 472-72	B-SEG-SYH-020
17	LOWER BUSH	YDK-ERS.SH-CN-0010
18	BIG PULLEY	YDK-ERS.SH-CN-0024
19	HINGE SHAFT	YTL-ERS.SH-KS-0002
20	MUHAFAZA VIDASI	YTL-ERS.SH-KS-0009
21	MAGNETIC SENSOR	M.ELK-SWC-KTG-001
22	CHASSIS	-
23	WHEEL WITH BRAKE	M.AKS-TKR-PSF-002
24	BUTTON	M.ENJ-ERS-PLS-PS-018
25	BUTTON SOCKET	M.AKS-DGM-MUH-009
26	PANEL SHEET	YSC-ERS.SH-LZ-0077
27	STOP BUTTON	M.ELK-SLT-BTL-006
28	TIME CLOCK	M.ELK-MEK-MTM-004
29	EMERGENCY STOP BUTTON	M.ELK-SLT-BTL-003
30	GZ1AN11 CONTACTOR	ERS.M.ELK-KNT-KNT-029
31	ENGINE PROTECTION LINING SHEET	M.ELK-SLT-MK-006
32	CONTACTOR LC1D09M7	ERS.M.ELK-KNT-KNT-027
33	AUTOMATIC RAIL	YEL-ERS.PR-KS-0001
34	ELECTRICAL PANEL GROUP	M.ELK-PNO-SH-002
35	STRAP (13*1050)	M.KYS-VKY-031
36	LOWER PULLEY	YDK-ERS.SH-CN-0012
37	BEARING (UCFL 206)	M.RLM-YTK-001
38	MIDDLE SHAFT	YTL-ERS.SH-KS-0044
39	MIXER	ARA-ERS.SH-0011
40	STAMP	YTL-ERS.SH-KS-0007
41	MICA BINDING SUPPORT SHEET	YSC-ERS.SH-LZ-0053
42	MAGNET	M.MIK-ERS-004
43	ELECTRIC MOTOR	M.ELK-MTR-RSM-011
44	ENGINE PULLEY	YTL-ERS.SH-KS-0043
45	STRAP (13*700)	M.KYS-VKY-017
46	UPPER PULLEY	YDK-ERS.SH-CN-0013
47	TOP COVER	M.ENJ-ERS-PLS-SH-001

SPIRAL DOUGH MIXER

G SPARE PART LIST-EXPLODING DRAWING



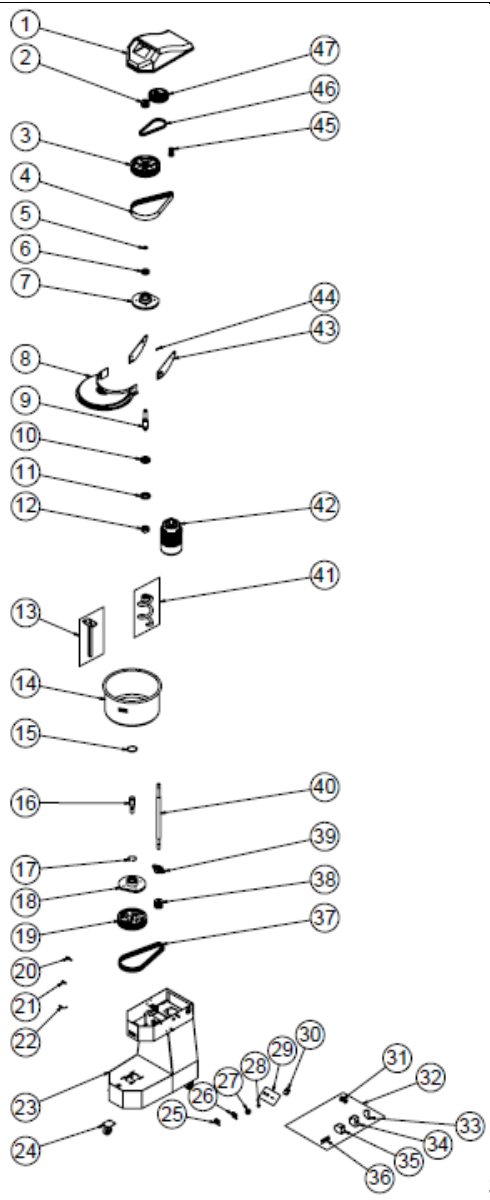
SH.05

G SPARE PART LIST-EXPLODING DRAWING

PRODUCT CODE:SH.05		
NO	PRODUCT NAME	P.CODE
1	TOP COVER	M.ENJ-ERS-PLS-SH-001
2	SMALL PULLEY	YDK-ERS.SH-CN-0011
3	BIG PULLEY	YDK-ERS.SH-CN-0014
4	RING 471-35	B-SEG-SYH-019
5	BEARING (6207 ZZ)	M.RLM-NRM-034
6	UPPER SLEEVE	YDK-ERS.SH-CN-0009
7	BEARING (6009 ZZ)	M.RLM-NRM-035
8	FELT 48*90*10	M.CNT-KCE-030
9	UPPER SLEEVE SHAFT	YTL-ERS.SH-KS-0033
10	STAMP	YTL-ERS.SH-KS-0007
11	BOILER COVER	M.ENJ-ERS-FLK-019
12	PRE-MIXER	ARA-ERS.SH-0005
13	Dough BOILER (40*26)	M.MTS-ERS-HY-007
14	RING 472-85	B-SEG-SYH-021
15	LOWER SLEEVE SHAFT	YTL-ERS.SH-KS-0032
16	RING 472-72	B-SEG-SYH-020
17	LOWER BUSH	YDK-ERS.SH-CN-0010
18	MUHAFAZA VIDASI	YTL-ERS.SH-KS-0009
19	HINGE SHAFT	YTL-ERS.SH-KS-0002
20	MAGNETIC SENSOR	M.ELK-SWC-KTG-001
21	CHASSIS	-
22	WHEEL WITH BRAKE	M.AKS-TKR-PSF-002
23	STOP BUTTON	M.ELK-SLT-BTL-006
24	BUTTON	M.ENJ-ERS-PLS-PS-018
25	BUTTON SOCKET	M.AKS-DGM-MUH-009
26	PANEL SHEET	YSC-ERS.SH-LZ-0077
27	TIME CLOCK	M.ELK-MEK-MTM-004
28	AUTOMATIC RAIL	YEL-ERS.PR-KS-0001
29	CONTACTOR LC1D09M7	ERS.M.ELK-KNT-KNT-027
30	ENGINE PROTECTION LINING SHEET	M.ELK-SLT-MK-006
31	GZ1AN11 CONTACTOR	ERS.M.ELK-KNT-KNT-029
32	EMERGENCY STOP BUTTON	M.ELK-SLT-BTL-003
33	ELECTRICAL PANEL GROUP	M.ELK-PNO-SH-002
34	STRAP (13*1100)	M.KYS-VKY-018
35	BIG PULLEY	YDK-ERS.SH-CN-0024
36	LOWER PULLEY	YDK-ERS.SH-CN-0012
37	BEARING (UCFL 206)	M.RLM-YTK-001
38	MIDDLE SHAFT	YTL-ERS.SH-KS-0039
39	Dough Mixer	ARA-ERS.SH-0004
40	MICA BINDING SHEET	YSC-ERS.SH-LZ-0001
41	MAGNET	M.MIK-ERS-004
42	ELECTRIC MOTOR	M.ELK-MTR-RSM-042
43	22 PJ 1168 STRAP	M.KYS-TKY-005
44	ENGINE PULLEY	YTL-ERS.SH-KS-0038
45	STRAP (13*700)	M.KYS-VKY-017
46	UPPER PULLEY	YDK-ERS.SH-CN-0013
47	TOP COVER	M.ENJ-ERS-PLS-SH-001

SPIRAL DOUGH MIXER

G SPARE PART LIST-EXPLODING DRAWING



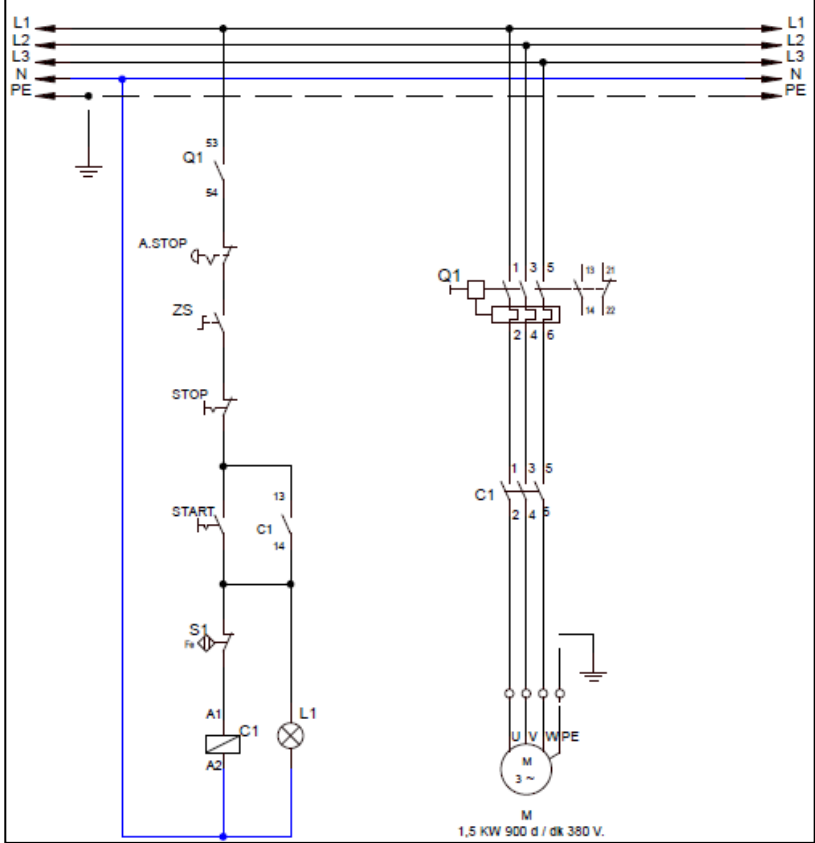
SH.06

G SPARE PART LIST-EXPLODING DRAWING

PRODUCT CODE:SH.06		
NO	PRODUCT NAME	P.CODE
1	TOP COVER	M.ENJ-ERS-PLS-SH-002
2	SMALL PULLEY	YDK-ERS.SH-CN-0011
3	BIG PULLEY	YDK-ERS.SH-CN-0014
4	22 PJ 1168 STRAP	M.KYS-TKY-006
5	RING 471-35	B-SEG-SYH-019
6	BEARING (6207 ZZ)	M.RLM-NRM-034
7	UPPER SLEEVE	YDK-ERS.SH-CN-0009
8	BOILER COVER	M.ENJ-ERS-FLK-020
9	UPPER SLEEVE SHAFT	YTL-ERS.SH-KS-0033
10	BEARING (6009 ZZ)	M.RLM-NRM-035
11	FELT 48*90*10	M.CNT-KCE-030
12	STAMP	YTL-ERS.SH-KS-0007
13	PRE-MIXER	ARA-ERS.SH-0006
14	Dough BOILER (50*29)	M.MTS-ERS-HY-008
15	RING 472-85	B-SEG-SYH-021
16	LOWER SLEEVE SHAFT	YTL-ERS.SH-KS-0032
17	RING 472-72	B-SEG-SYH-020
18	LOWER BUSH	YDK-ERS.SH-CN-0010
19	BIG PULLEY	YDK-ERS.SH-CN-0024
20	HINGE SHAFT	YTL-ERS.SH-KS-0002
21	MUHFAZA VIDASI	YTL-ERS.SH-KS-0009
22	MAGNETIC SENSOR	M.ELK-SWC-KTG-001
23	CHASSIS	-
24	WHEEL WITH BRAKE	M.AKS-TKR-PSF-004
25	STOP BUTTON	M.ELK-SLT-BTL-006
26	STOP BUTTON	M.ELK-SLT-BTL-006
27	BUTTON	M.ENJ-ERS-PLS-PS-018
28	BUTTON SOCKET	M.AKS-DGM-MUH-009
29	PANEL SHEET	YSC-ERS.SH-LZ-0077
30	TIME CLOCK	M.ELK-MEK-MTM-004
31	EMERGENCY STOP BUTTON	M.ELK-SLT-BTL-003
32	ELECTRICAL PANEL GROUP	M.ELK-PNO-SH-002
33	GZ1AN11 CONTACTOR	ERS.M.ELK-KNT-KNT-029
34	ENGINE PROTECTION LINING SHEET	M.ELK-SLT-MK-006
35	CONTACTOR LC1D09M7	ERS.M.ELK-KNT-KNT-027
36	AUTOMATIC RAIL	YEL-ERS.PR-KS-0001
37	STRAP (13*1175)	M.KYS-VKY-013
38	LOWER PULLEY	YDK-ERS.SH-CN-0012
39	BEARING (UCFL 206)	M.RLM-YTK-001
40	MIDDLE SHAFT	YTL-ERS.SH-KS-0040
41	MIXER	ARA-ERS.SH-0007
42	ELECTRIC MOTOR	M.ELK-MTR-RSM-042
43	MICA BINDING SHEET	YSC-ERS.SH-LZ-0009
44	MAGNET	M.MIK-ERS-004
45	ENGINE PULLEY	YTL-ERS.SH-KS-0038
46	STRAP (13*700)	M.KYS-VKY-017
47	UPPER PULLEY	YDK-ERS.SH-CN-0013

SPIRAL DOUGH MIXER

H ELECTRIC CIRCUIT SCHEMA



PRODUCT CODE	POWER (KW)	RPM	VOLTAGE
SH.04	1,1	900	380
SH.05	1,5	900	380
SH.06	1,5	900	380

I	Q1	M	S1	C1	L1	ZS
Terminal	Motor Safety Relay	Motor	Basket Magnetic Sensor	Contactora	Start Lamp	Timer 0-30 min.



SPIRAL DOUGH MIXER

PRODUCT CODE	POWER (KW)	RPM	VOLTAGE
SH.01	1 / 1,7	750/1500	380
SH.02	1.5 / 2.5	750/1500	380
SH.03	1.5 / 2.5	750/1500	380