



# SEMOLINA PASTA PREPARATION AND MEATBALL SHAPERS

## CONTENTS

---

|          |   |                |
|----------|---|----------------|
| <b>A</b> | <b>GENERAL INFORMATION</b> .....                | <b>Page 2</b>  |
| A1       | PRODUCT DESCRIPTION .....                       | Page 3         |
| A2       | TECHNICAL INFORMATION .....                     | Page 3         |
| A3       | TRANSPORTATION .....                            | Page 4         |
| A4       | UNPACKING .....                                 | Page 4         |
| <b>B</b> | <b>INSTALLATION</b> .....                       | <b>Page 4</b>  |
| <b>C</b> | <b>SAFETY INSTRUCTIONS</b> .....                | <b>Page 5</b>  |
| <b>D</b> | <b>OPERATION</b> .....                          | <b>Page 6</b>  |
| <b>E</b> | <b>CLEANING &amp; MAINTENANCE</b> .....         | <b>Page 7</b>  |
| <b>F</b> | <b>TROUBLESHOOTING</b> .....                    | <b>Page 7</b>  |
| <b>G</b> | <b>SPARE PART LIST- EXPLODING DRAWING</b> ..... | <b>Page 8</b>  |
| <b>H</b> | <b>ELECTRIC CIRCUIT SCHEMA</b> .....            | <b>Page 17</b> |

# SEMOLINA PASTA PREPARATION AND MEATBALL SHAPERS

## A GENERAL INFORMATION

---

Before installing the appliance, read operation and maintenance instructions carefully. Wrong installation and part changing may damage the product or may cause injury on people. These are not in our company's responsibility to damage the appliance intentionally, negligence, detriments because of disobeying instructions and regulations, wrong connections. Unauthorized intervention to appliance invalidates the warranty.

1. This instruction manual should be kept in a safe place for future reference.
2. **Installation should be made in accordance with ordinances and security rules of that country by a qualified service personnel.**
3. This appliance has to be used by trained person.
4. Please turn off the appliance immediately in the event of malfunction or failure. The appliance should be repaired only by authorized service personnel. Please demand original spare part.

# SEMOLINA PASTA PREPARATION AND MEATBALL SHAPERS

## A1 PRODUCT DESCRIPTION

---

\*The Professional Semolina Pasta Preparation and Meatball Shapers, that provides high efficiency has been designed to be used in industrial kitchens.

| Product Code | Dimensions (mm) | Weight (kg) | Packaging Dimensions (mm) |
|--------------|-----------------|-------------|---------------------------|
| <b>TK.01</b> | 1510x450x1040   | 102         | 1560x540x1190             |
| <b>TK.02</b> | 1510x450x1040   | 102         | 1560x540x1190             |
| <b>TK.05</b> | 1510x450x1040   | 104         | 1560x540x1190             |
| <b>TK.06</b> | 1510x450x1040   | 104         | 1560x540x1190             |

## A2 TECHNICAL INFORMATION

---

| Product Code | Capacity (kg) | Power (Kw) | Operating Voltage (V) | Cable (mm <sup>2</sup> ) | Fuse (A) |
|--------------|---------------|------------|-----------------------|--------------------------|----------|
| <b>TK.01</b> | 5             | 0,37       | 220                   | 3x1,5                    | 16       |
| <b>TK.02</b> | 5             | 0,37       | 380                   | 4x1,5                    | 16       |
| <b>TK.05</b> | 10            | 0,37       | 220                   | 3x1,5                    | 16       |
| <b>TK.06</b> | 10            | 0,37       | 380                   | 4x1,5                    | 16       |

# SEMOLINA PASTA PREPARATION AND MEATBALL SHAPERS

## **A3      TRANSPORTATION**

---

\*This appliance can not be moved by hand from area to area. It must be moved on pallet with forklift truck.

## **A4      UNPACKING**

---

\*Please unpack the package according to the security codes and ordinances of current country and get rid from the pack. Parts which contacts with food are produced by stainless steel. All plastic parts are marked by material's symbol.

\*Please check that all the parts of appliance had come completely and if they are damaged or not during the shipping.

## **B        INSTALLATION**

---

\*Please place the product to straight and sturdy ground, please take necessary steps against possibility of overturn.

\*Technician who will serve for installation and service for the appliance must be professional on this subject and must have installation and service licenses by the company.

\*Connection to Electric Power Supply must be done by authorized person.

\*Please be sure that the voltage connected to appliance must be equal with the voltage which is on appliance's label.



This appliance must be connected to an earthed outlet in accordance with safety rules and standards.










\*Appliance's earthing must be connected to earthing line on panel which is nearest to electric installation.

\*Connection to the main fuse and leak current fuse must be done in accordance with the current regulations.

# SEMOLINA PASTA PREPARATION AND MEATBALL SHAPERS

## C SAFETY INSTRUCTIONS

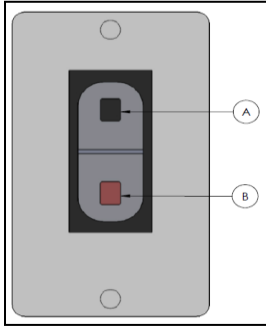
---

-  \*Do not use the appliance in insufficient lighted place.
-  \*Do not touch the moving attachments while the appliance operates.
-  \*Do not install the appliance in the presence of flammable or explosive materials.
-  \*Do not operate the appliance when the machine is empty.
-  \*Do not load so less or more than appliance's capacity .
-  \*Do not attempt to use the appliance without suitable protective equipments.
-  \*Because of any reason if there is a fire or flame flare where the appliance is used,turn off all gas valves and electric contactor switch quickly and use fire extinguisher .Never use water to extinguish the fire.
-  \*All the damages because of not having earthing connection will not be on warranty.
-  \*Do not interfere the gear system while the appliance is operating.

# SEMOLINA PASTA PREPARATION AND MEATBALL SHAPERS

## D OPERATION

### \*Control Panel;



**A** : (I) ON Button

**B** : (O) OFF Button

### \*Operating;

- Before operating the appliance, clean the tank and dry.
- Before operating the appliance, check if the automatic switches are on or off. Otherwise tank and lid may get damaged because the appliance doesn't stop.
- Before putting Semolina Pasta Dough or Meatball mix into the tank, separate the yellow nut that provides movement of piston and pull back the piston.
- Open the tank's lid and lubricate the inside of tank with oil. (etc : sunflower oil).
- Place the desired attachment. (semolina pasta / meatball).
- Fill the tank with semolina pasta / meatball mix. Pay attention the material to be fluid.
- Close the tank's lid and compress the nut.
- In order to operate the appliance press (I) button.
- If the appliance operates with 380 V, while plugging during first operation, pay attention to be operated on the direction of arrow.
- Be sure that yellow nut grasps the main shaft and lock nut locker without forcing.
- In order to adjust size of meatball and semolina pasta while the appliance is operating increase/ reduce rotation speed or number of wire.
- Adjust rotation speed of shaft with transition of big/small gear by using speed setting handle.
- The piston will move to forward with appliance's operation and then mix that is in tank will end and the handle on nut locker will turn off the appliance by touching switch's (O) button.
- After the operation completed, unplug the power supply.



# SEMOLINA PASTA PREPARATION AND MEATBALL SHAPERS

## E CLEANING & MAINTENANCE

### ➤ CLEANING AND MAINTENANCE AFTER EVERY USE

- Always turn off the appliance and disconnect from the power supply before cleaning.
- Clean outer surface of appliance ,dough bracket,tank and tank lid with wet cloth and then dry.
- Do not use abrasive cleaning chemicals as these can leave harmful residues.
- Do not clean the appliance by spraying water directly,otherwise electric motor may get damaged.

### ➤ PERIODIC CLEANING AND MAINTENANCE

- Maintenance should be done by qualified person.
- Get the periodic maintenance of the appliance once in every 15 days.
- Semolina Pasta Preparation and meatball shapers require low maintenance (Motor and ball bearings are lubricated).
- Check the appliance’s motor and tension of belt.
- Lubricate the main shaft and gear system according to frequency of use.

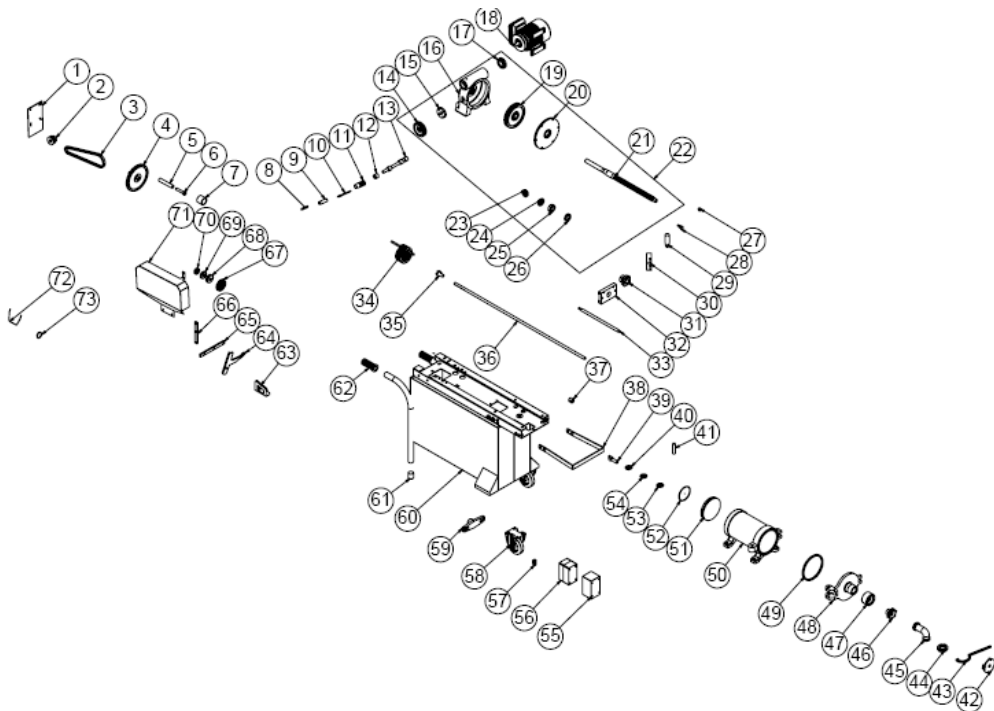
## F TROUBLESHOOTING

|   |  |
|---|--|
| <b>THE APPLIANCE DOESN'T OPERATE</b>  | <ol style="list-style-type: none"> <li>1. Check if the appliance is plugged in.</li> <li>2. Check the electrical connections and voltage.</li> <li>3. Check the piston and gear system.</li> </ol>   |
| <b>THE APPLIANCE IS NOISY</b>   | <ol style="list-style-type: none"> <li>1. Check the automatic switch.If the piston operates when there is no mix in it,this may damage the tank and tank lid seriously .</li> <li>2. Check if the appliance is loaded as it's capacity or not.</li> <li>3. If the motor is noisy,stop it and call authorized service.</li> </ol> |
| <b>THE APPLIANCE STOPPED</b>  | <ol style="list-style-type: none"> <li>1. The appliance can stop due to low voltage.In this situation check the voltage.</li> <li>2. If the appliance is overloaded,turn off the appliance and allow to cool down by taking off some materials from tank.</li> </ol>   |
| <ul style="list-style-type: none"> <li>• If Semolina pasta and meatball shaping is not done at suitable quality</li> <li>• If any function of security doesn't work           <ul style="list-style-type: none"> <li>➤ Do not use the appliance.</li> </ul> </li> </ul> |  |

**\*If these problems are still going on,contact with our authorized services.**

# SEMOLINA PASTA PREPARATION AND MEATBALL SHAPERS

## G SPARE PART LIST-EXPLODING DRAWING



PRODUCT CODE: TK.01

| NO | PRODUCT NAME       | P.CODE               |
|----|--------------------|----------------------|
| 1  | ENGINE PLATINUM    | YSC-ERS.TK-LZ-0038   |
| 2  | ENGINE PULLEY      | YDK-ERS.TK-CN-0030   |
| 3  | STRAP (13*775)     | M.KYS-VKY-008        |
| 4  | MOTION GEAR        | YDK-ERS.TK-CN-0015   |
| 5  | TENSION PIPE       | YBR-ERS.TK-KS-0003   |
| 6  | M14*70 SCREW       | B-MVC-GLV-AKB-M14*70 |
| 7  | ARM BUSH           | YBR-ERS.TK-KS-0002   |
| 8  | ARM SPRING         | M.YAY-ERS-008        |
| 9  | ARM HANDLE         | YTL-ERS.TK-KS-0011   |
| 10 | ARM PIN            | YTL-ERS.TK-KS-0005   |
| 11 | ARM HOLD           | YTL-ERS.TK-KS-0006   |
| 12 | BUSH               | YTL-ERS.TK-KS-0012   |
| 13 | ENGINE TABLE SHAFT | YTL-ERS.TK-KS-0013   |



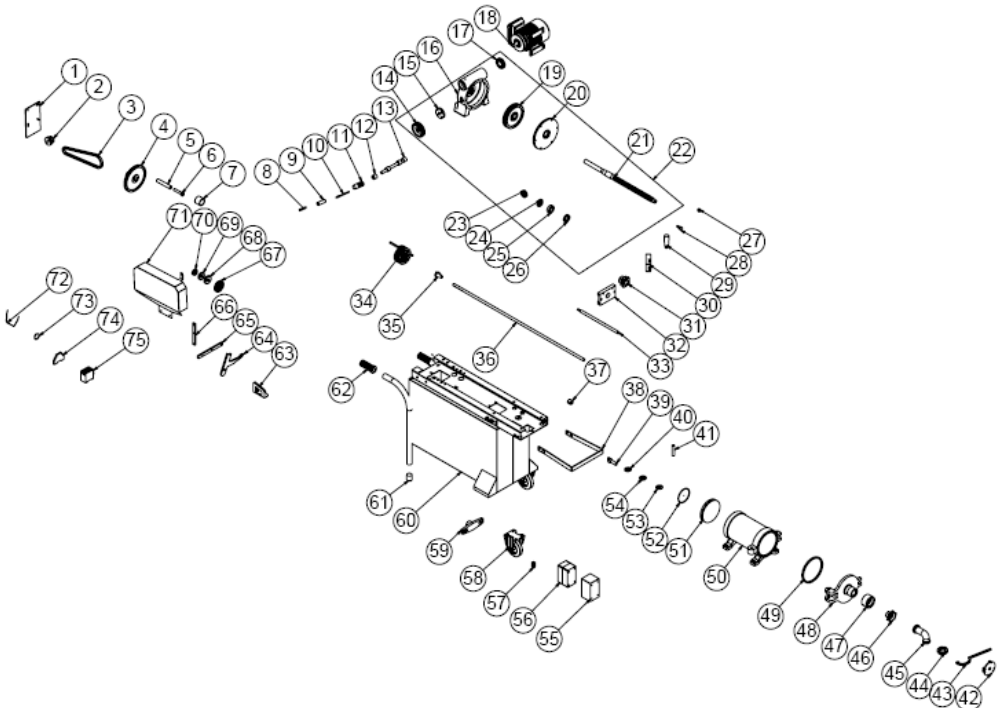
# SEMOLINA PASTA PREPARATION AND MEATBALL SHAPERS

|    |                               |                       |
|----|-------------------------------|-----------------------|
| 14 | REDUCER PULLEY                | YDK-ERS.TK-CN-0029    |
| 15 | SIDE COVER                    | YDK-ERS.TK-CN-0011    |
| 16 | REDUCER BODY                  | YDK-ERS.TK-CN-0009    |
| 17 | SIDE COVER                    | YDK-ERS.TK-CN-0010    |
| 18 | ELECTRIC MOTOR                | M.ELK-MTR-RSM-034     |
| 19 | THREADED                      | YDK-ERS.TK-CN-0013    |
| 20 | FRONT COVER                   | YDK-ERS.TK-CN-0014    |
| 21 | MAIN SHAFT                    | YTL-ERS.TK-KS-0003    |
| 22 | REDUCER                       | ARA-ERS.TK-0002       |
| 23 | BEARING ( 6204 ZZ )           | M.RLM-NRM-014         |
| 24 | FELT 24*50*7                  | M.CNT-KCE-006         |
| 25 | BEARING ( R-T 101 )           | M.RLM-NRM-019         |
| 26 | FELT 33*50*10                 | M.CNT-KCE-019         |
| 27 | BEARING ( 608 Z )             | ERS.M.RLM-NRM-001     |
| 28 | GEAR SHAFT                    | YTL-ERS.TK-KS-0007    |
| 29 | HANDLE                        | ERS.M.AKS-KLP-BKL-007 |
| 30 | MOVEMENT ARM U SHEET          | YSC-ERS.TK-LZ-0003    |
| 31 | NUT                           | YDK-ERS.TK-CN-0022    |
| 32 | SLED                          | YDK-ERS.TK-CN-0021    |
| 33 | THROWER SHAFT                 | YTL-ERS.TK-KS-0009    |
| 34 | 3*1.50 MM CABLE               | HEL-KB-TT-3*1,5-SYH   |
| 35 | MALE PLUG                     | M.ELK-PWR-ERK-003     |
| 36 | CRANK AXLE                    | YTL-ERS.TK-KS-0008    |
| 37 | BUSH                          | YTL-ERS.TK-KS-0001    |
| 38 | CUTTING WIRE COVER SHEET      | YSC-ERS.TK-LZ-0012    |
| 39 | COVER LOCK PIN                | YTL-ERS.TK-KS-0004    |
| 40 | MEATBALL APPARATUS SHEET      | YSC-ERS.TK-LZ-0011    |
| 41 | COVER PIN                     | YTL-ERS.TK-KS-0014    |
| 42 | WIRE CUTTING PLACE            | YDK-ERS.TK-CN-0008    |
| 43 | KEY                           | YMH-ERS.TK-FGL-0002   |
| 44 | NUT                           | YDK-ERS.TK-CN-0002    |
| 45 | BRACKET                       | YDK-ERS.TK-CN-0001    |
| 46 | COVER NUT                     | YDK-ERS.TK-CN-0003    |
| 47 | ELBOW NUT                     | YDK-ERS.TK-CN-0007    |
| 48 | HOPPER COVER                  | YDK-ERS.TK-CN-0005    |
| 49 | COVER GASKET                  | M.CNT-ERS-010         |
| 50 | RECEPTACLE                    | YDK-ERS.TK-CN-0004    |
| 51 | PISTON                        | YDK-ERS.TK-CN-0006    |
| 52 | PISTON GASKET                 | M.CNT-ERS-009         |
| 53 | THICK STAR WASHER             | YSC-ERS.TK-LZ-0044    |
| 54 | THIN STAR WASHER              | YSC-ERS.TK-LZ-0045    |
| 55 | CONDITIONAL CONSERVATION FOOT | YSC-ERS.TK-LZ-0020    |
| 56 | THERMAL SWITCH                | M.ELK-SLT-BT-002      |
| 57 | PG-11 CABLE FITTING           | M.ELK-RKR-PLS-005     |
| 58 | WHEEL                         | M.AKS-TKR-KN-001      |
| 59 | SHAFT LOCATION                | YDK-ERS.TK-CN-0012    |

# SEMOLINA PASTA PREPARATION AND MEATBALL SHAPERS

|    |                    |                    |
|----|--------------------|--------------------|
| 60 | CHASSIS            | -                  |
| 61 | 32'LIK OUTER WEDGE | M.PLS-ERS-013      |
| 62 | ARM RUBBER         | M.ENJ-ERS-LST-013  |
| 63 | CONNECTING ELEMENT | YDK-ERS.TK-CN-0028 |
| 64 | ARM PLATIN         | M.PLTN-ERS-TK-001  |
| 65 | STOP ARM           | YLS-ERS.TK-KS-0002 |
| 66 | SLIDE BAR          | YLS-ERS.TK-KS-0001 |
| 67 | TRANSMISSION GEAR  | YDK-ERS.TK-CN-0016 |
| 68 | SPEED GEAR 3       | YDK-ERS.TK-CN-0019 |
| 69 | SPEED GEAR 2       | YDK-ERS.TK-CN-0018 |
| 70 | SPEED GEAR 1       | YDK-ERS.TK-CN-0017 |
| 71 | COVER SHEET        | YSC-ERS.TK-LZ-0017 |
| 72 | CUTTING WIRE       | M.MUH-070          |
| 73 | RING 471-40        | B-SEG-SYH-014      |

## G SPARE PART LIST-EXPLODING DRAWING



TK.02

# SEMOLINA PASTA PREPARATION AND MEATBALL SHAPERS

## G SPARE PART LIST-EXPLODING DRAWING

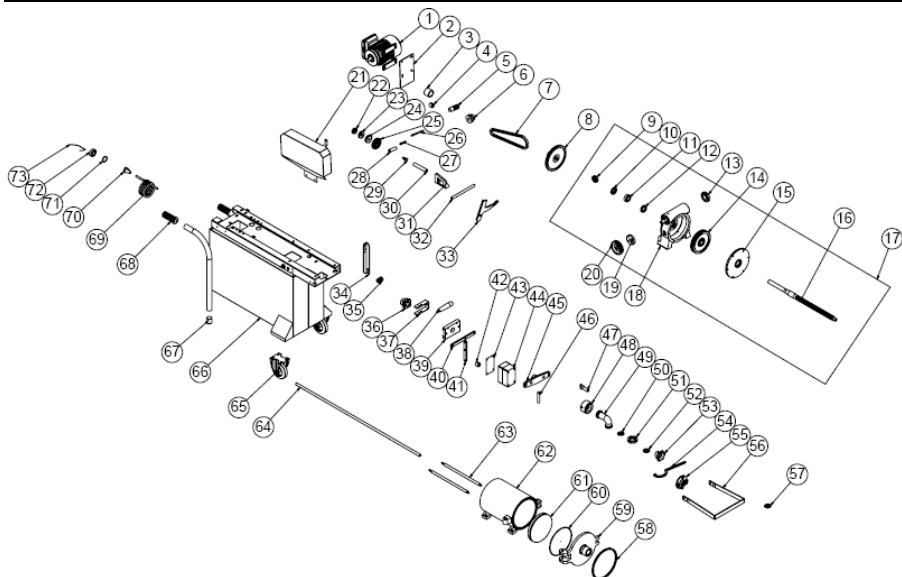
| PRODUCT CODE: TK.02 |                          |                       |
|---------------------|--------------------------|-----------------------|
| NO                  | PRODUCT NAME             | P.CODE                |
| 1                   | ENGINE PLATINUM          | YSC-ERS.TK-LZ-0038    |
| 2                   | ENGINE PULLEY            | YDK-ERS.TK-CN-0030    |
| 3                   | STRAP (13*775)           | M.KYS-VKY-008         |
| 4                   | MOTION GEAR              | YDK-ERS.TK-CN-0015    |
| 5                   | TENSION PIPE             | YBR-ERS.TK-KS-0003    |
| 6                   | M14*70 SCREW             | B-MVC-GLV-AKB-M14*70  |
| 7                   | ARM BUSH                 | YBR-ERS.TK-KS-0002    |
| 8                   | ARM SPRING               | M.YAY-ERS-008         |
| 9                   | ARM HANDLE               | YTL-ERS.TK-KS-0011    |
| 10                  | ARM PIN                  | YTL-ERS.TK-KS-0005    |
| 11                  | ARM HOLD                 | YTL-ERS.TK-KS-0006    |
| 12                  | BUSH                     | YTL-ERS.TK-KS-0012    |
| 13                  | ENGINE TABLE SHAFT       | YTL-ERS.TK-KS-0013    |
| 14                  | REDUCER PULLEY           | YDK-ERS.TK-CN-0029    |
| 15                  | SIDE COVER               | YDK-ERS.TK-CN-0011    |
| 16                  | REDUCER BODY             | YDK-ERS.TK-CN-0009    |
| 17                  | SIDE COVER               | YDK-ERS.TK-CN-0010    |
| 18                  | ELECTRIC MOTOR           | M.ELK-MTR-RSM-028     |
| 19                  | THREADED                 | YDK-ERS.TK-CN-0013    |
| 20                  | FRONT COVER              | YDK-ERS.TK-CN-0014    |
| 21                  | MAIN SHAFT               | YTL-ERS.TK-KS-0003    |
| 22                  | REDUCER                  | ARA-ERS.TK-0002       |
| 23                  | BEARING ( 6204 ZZ )      | M.RLM-NRM-014         |
| 24                  | FELT 24*50*7             | M.CNT-KCE-006         |
| 25                  | BEARING ( R-T 101 )      | M.RLM-NRM-019         |
| 26                  | FELT 33*50*10            | M.CNT-KCE-019         |
| 27                  | BEARING ( 608 Z )        | ERS.M.RLM-NRM-001     |
| 28                  | GEAR SHAFT               | YTL-ERS.TK-KS-0007    |
| 29                  | HANDLE                   | ERS.M.AKS-KLP-BKL-007 |
| 30                  | MOVEMENT ARM U SHEET     | YSC-ERS.TK-LZ-0003    |
| 31                  | NUT                      | YDK-ERS.TK-CN-0022    |
| 32                  | SLED                     | YDK-ERS.TK-CN-0021    |
| 33                  | THROWER SHAFT            | YTL-ERS.TK-KS-0009    |
| 34                  | 3*1,50 MM CABLE          | HEL-KB-TT-3*1,5-SYH   |
| 35                  | MALE PLUG                | M.ELK-PWR-ERK-003     |
| 36                  | CRANK AXLE               | YTL-ERS.TK-KS-0008    |
| 37                  | BUSH                     | YTL-ERS.TK-KS-0001    |
| 38                  | CUTTING WIRE COVER SHEET | YSC-ERS.TK-LZ-0012    |
| 39                  | COVER LOCK PIN           | YTL-ERS.TK-KS-0004    |
| 40                  | MEATBALL APPARATUS SHEET | YSC-ERS.TK-LZ-0011    |

# SEMOLINA PASTA PREPARATION AND MEATBALL SHAPERS

|    |                               |                       |
|----|-------------------------------|-----------------------|
| 41 | COVER PIN                     | YTL-ERS.TK-KS-0014    |
| 42 | WIRE CUTTING PLACE            | YDK-ERS.TK-CN-0008    |
| 43 | KEY                           | YMH-ERS.TK-FGL-0002   |
| 44 | NUT                           | YDK-ERS.TK-CN-0002    |
| 45 | BRACKET                       | YDK-ERS.TK-CN-0001    |
| 46 | COVER NUT                     | YDK-ERS.TK-CN-0003    |
| 47 | ELBOW NUT                     | YDK-ERS.TK-CN-0007    |
| 48 | HOPPER COVER                  | YDK-ERS.TK-CN-0005    |
| 49 | COVER GASKET                  | M.CNT-ERS-010         |
| 50 | RECEPTACLE                    | YDK-ERS.TK-CN-0004    |
| 51 | PISTON                        | YDK-ERS.TK-CN-0006    |
| 52 | PISTON GASKET                 | M.CNT-ERS-009         |
| 53 | THICK STAR WASHER             | YSC-ERS.TK-LZ-0044    |
| 54 | THIN STAR WASHER              | YSC-ERS.TK-LZ-0045    |
| 55 | CONDITIONAL CONSERVATION FOOT | YSC-ERS.TK-LZ-0020    |
| 56 | THERMAL SWITCH                | M.ELK-SLT-BT-002      |
| 57 | PG-11 CABLE FITTING           | M.ELK-RKR-PLS-005     |
| 58 | WHEEL                         | M.AKS-TKR-KN-001      |
| 59 | SHAFT LOCATION                | YDK-ERS.TK-CN-0012    |
| 60 | CHASSIS                       | -                     |
| 61 | 32'LIK OUTER WEDGE            | M.PLS-ERS-013         |
| 62 | ARM RUBBER                    | M.ENJ-ERS-LST-013     |
| 63 | CONNECTING ELEMENT            | YDK-ERS.TK-CN-0028    |
| 64 | ARM PLATIN                    | M.PLTN-ERS-TK-001     |
| 65 | STOP ARM                      | YLS-ERS.TK-KS-0002    |
| 66 | SLIDE BAR                     | YLS-ERS.TK-KS-0001    |
| 67 | TRANSMISSION GEAR             | YDK-ERS.TK-CN-0016    |
| 68 | SPEED GEAR 3                  | YDK-ERS.TK-CN-0019    |
| 69 | SPEED GEAR 2                  | YDK-ERS.TK-CN-0018    |
| 70 | SPEED GEAR 1                  | YDK-ERS.TK-CN-0017    |
| 71 | COVER SHEET                   | YSC-ERS.TK-LZ-0017    |
| 72 | CUTTING WIRE                  | M.MUH-070             |
| 73 | RING 471-40                   | B-SEG-SYH-014         |
| 74 | evacuation time relay         | M.ELK-KNT-ROL-026     |
| 75 | CONTACTOR LC1K0910M           | ERS.M.ELK-KNT-KNT-021 |

# SEMOLINA PASTA PREPARATION AND MEATBALL SHAPERS

## G SPARE PART LIST-EXPLODING DRAWING



| PRODUCT CODE: TK.05 |                     |                    |
|---------------------|---------------------|--------------------|
| NO                  | PRODUCT NAME        | P.CODE             |
| 1                   | ELECTRIC MOTOR      | M.ELK-MTR-RSM-034  |
| 2                   | ENGINE PLATINUM     | YSC-ERS.TK-LZ-0038 |
| 3                   | ARM BUSH            | YBR-ERS.TK-KS-0002 |
| 4                   | BUSH                | YTL-ERS.TK-KS-0012 |
| 5                   | ARM HOLD            | YTL-ERS.TK-KS-0006 |
| 6                   | ENGINE PULLEY       | YDK-ERS.TK-CN-0030 |
| 7                   | STRAP (13*775)      | M.KYS-VKY-008      |
| 8                   | MOTION GEAR         | YDK-ERS.TK-CN-0015 |
| 9                   | BEARING ( 6204 ZZ ) | M.RLM-NRM-014      |
| 10                  | FELT 24*50*7        | M.CNT-KCE-006      |
| 11                  | BEARING ( R-T 101 ) | M.RLM-NRM-019      |
| 12                  | FELT 33*50*10       | M.CNT-KCE-019      |
| 13                  | SIDE COVER          | YDK-ERS.TK-CN-0010 |
| 14                  | THREADED            | YDK-ERS.TK-CN-0013 |
| 15                  | FRONT COVER         | YDK-ERS.TK-CN-0014 |
| 16                  | MAIN SHAFT          | YTL-ERS.TK-KS-0003 |
| 17                  | REDUCER             | ARA-ERS.TK-0002    |
| 18                  | REDUCER BODY        | YDK-ERS.TK-CN-0009 |
| 19                  | SIDE COVER          | YDK-ERS.TK-CN-0011 |
| 20                  | REDUCER PULLEY      | YDK-ERS.TK-CN-0029 |

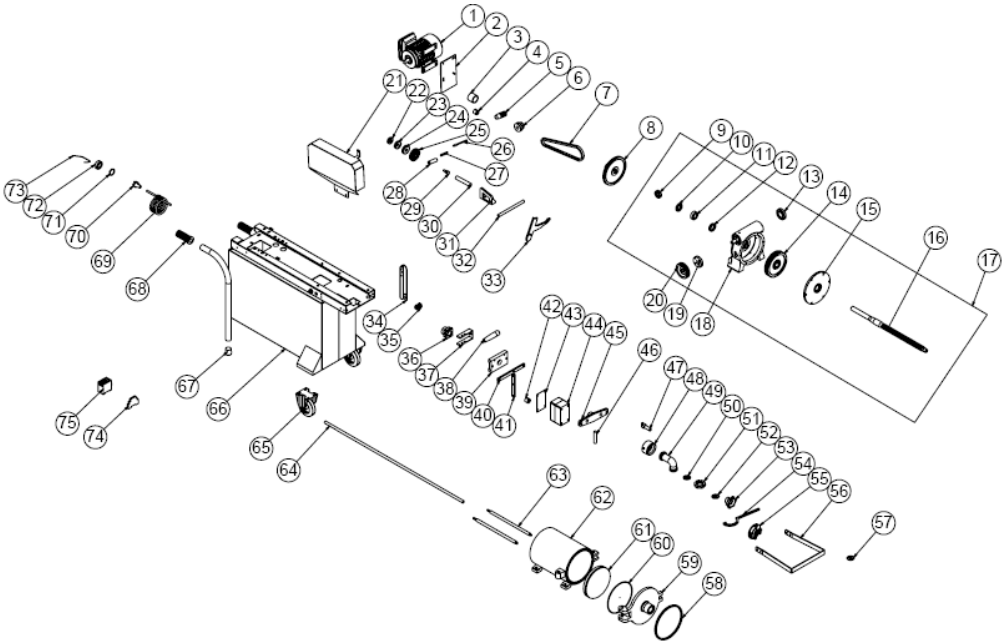
# SEMOLINA PASTA PREPARATION AND MEATBALL SHAPERS

|    |                               |                       |
|----|-------------------------------|-----------------------|
| 21 | COVER SHEET                   | YSC-ERS.TK-LZ-0017    |
| 22 | SPEED GEAR 1                  | YDK-ERS.TK-CN-0017    |
| 23 | SPEED GEAR 2                  | YDK-ERS.TK-CN-0018    |
| 24 | SPEED GEAR 3                  | YDK-ERS.TK-CN-0019    |
| 25 | TRANSMISSION GEAR             | YDK-ERS.TK-CN-0016    |
| 26 | ARM PIN                       | YTL-ERS.TK-KS-0005    |
| 27 | ARM SPRING                    | M.YAY-ERS-008         |
| 28 | ARM HANDLE                    | YTL-ERS.TK-KS-0011    |
| 29 | GEAR SHAFT                    | YTL-ERS.TK-KS-0007    |
| 30 | TENSION PIPE                  | YBR-ERS.TK-KS-0003    |
| 31 | CONNECTING ELEMENT            | YDK-ERS.TK-CN-0028    |
| 32 | ENGINE TABLE SHAFT            | YTL-ERS.TK-KS-0013    |
| 33 | ARM PLATE                     | M.PLTN-ERS-TK-001     |
| 34 | CONDITIONAL CONSERVATION FOOT | YSC-ERS.TK-LZ-0002    |
| 35 | PG-11 CABLE FITTING           | M.ELK-RKR-PLS-005     |
| 36 | NUT                           | YDK-ERS.TK-CN-0022    |
| 37 | MOVEMENT ARM U SHEET          | YSC-ERS.TK-LZ-0003    |
| 38 | HANDLE                        | ERS.M.AKS-KLP-BKL-007 |
| 39 | SLED                          | YDK-ERS.TK-CN-0021    |
| 40 | STOP ARM                      | YLS-ERS.TK-KS-0005    |
| 41 | SLIDE BAR                     | YLS-ERS.TK-KS-0001    |
| 42 | BUSH                          | YTL-ERS.TK-KS-0012    |
| 43 | CONDITIONAL CONSERVATION FOOT | YSC-ERS.TK-LZ-0021    |
| 44 | THERMAL SWITCH                | M.ELK-SLT-BT-002      |
| 45 | SHAFT LOCATION                | YDK-ERS.TK-CN-0027    |
| 46 | COVER PIN                     | YTL-ERS.TK-KS-0016    |
| 47 | COVER LOCK PIN                | YTL-ERS.TK-KS-0004    |
| 48 | ELBOW NUT                     | YDK-ERS.TK-CN-0007    |
| 49 | BRACKET                       | YDK-ERS.TK-CN-0001    |
| 50 | THIN STAR WASHER              | YSC-ERS.TK-LZ-0045    |
| 51 | NUT                           | YDK-ERS.TK-CN-0002    |
| 52 | MEATBALL APPARATUS SHEET      | YSC-ERS.TK-LZ-0011    |
| 53 | COVER NUT                     | YDK-ERS.TK-CN-0003    |
| 54 | KEY                           | YMH-ERS.TK-FGL-0002   |
| 55 | WIRE CUTTING PLACE            | YDK-ERS.TK-CN-0008    |
| 56 | CUTTING WIRE COVER SHEET      | YSC-ERS.TK-LZ-0012    |
| 57 | THICK STAR WASHER             | YSC-ERS.TK-LZ-0044    |
| 58 | COVER GASKET                  | M.CNT-ERS-012         |
| 59 | HOPPER COVER                  | YDK-ERS.TK-CN-0026    |
| 60 | PISTON GASKET                 | M.CNT-ERS-011         |
| 61 | PISTON                        | YDK-ERS.TK-CN-0025    |
| 62 | RECEPTACLE                    | YDK-ERS.TK-CN-0024    |
| 63 | THROWER SHAFT                 | YTL-ERS.TK-KS-0009    |
| 64 | CRANK AXLE                    | YTL-ERS.TK-KS-0008    |
| 65 | WHEEL                         | M.AKS-TKR-KN-001      |
| 66 | CHASSIS                       | -                     |
| 67 | 32'LIK OUTER WEDGE            | M.PLS-ERS-013         |

# SEMOLINA PASTA PREPARATION AND MEATBALL SHAPERS

|    |                   |                     |
|----|-------------------|---------------------|
| 68 | ARM RUBBER        | M.ENJ-ERS-LST-013   |
| 69 | 3*1.50 MM CABLE   | HEL-KB-TT-3*1,5-SYH |
| 70 | MALE PLUG         | M.ELK-PWR-ERK-003   |
| 71 | RING 471-40       | B-SEG-SYH-014       |
| 72 | BEARING ( 608 Z ) | ERS.M.RLM-NRM-001   |
| 73 | CUTTING WIRE      | M.MUH-070           |

## G SPARE PART LIST-EXPLODING DRAWING



| PRODUCT CODE: TK.06 |                     |                    |
|---------------------|---------------------|--------------------|
| NO                  | PRODUCT NAME        | P.CODE             |
| 1                   | ELECTRIC MOTOR      | M.ELK-MTR-RSM-028  |
| 2                   | ENGINE PLATINUM     | YSC-ERS.TK-LZ-0038 |
| 3                   | ARM BUSH            | YBR-ERS.TK-KS-0002 |
| 4                   | BUSH                | YTL-ERS.TK-KS-0012 |
| 5                   | ARM HOLD            | YTL-ERS.TK-KS-0006 |
| 6                   | ENGINE PULLEY       | YDK-ERS.TK-CN-0030 |
| 7                   | STRAP (13*775)      | M.KYS-VKY-008      |
| 8                   | MOTION GEAR         | YDK-ERS.TK-CN-0015 |
| 9                   | BEARING ( 6204 ZZ ) | M.RLM-NRM-014      |
| 10                  | FELT 24*50*7        | M.CNT-KCE-006      |
| 11                  | BEARING ( R-T 101 ) | M.RLM-NRM-019      |

# SEMOLINA PASTA PREPARATION AND MEATBALL SHAPERS

|    |                               |                       |
|----|-------------------------------|-----------------------|
| 12 | FELT 33*50*10                 | M.CNT-KCE-019         |
| 13 | SIDE COVER                    | YDK-ERS.TK-CN-0010    |
| 14 | THREADED                      | YDK-ERS.TK-CN-0013    |
| 15 | FRONT COVER                   | YDK-ERS.TK-CN-0014    |
| 16 | MAIN SHAFT                    | YTL-ERS.TK-KS-0003    |
| 17 | REDUCER                       | ARA-ERS.TK-0002       |
| 18 | REDUCER BODY                  | YDK-ERS.TK-CN-0009    |
| 19 | SIDE COVER                    | YDK-ERS.TK-CN-0011    |
| 20 | REDUCER PULLEY                | YDK-ERS.TK-CN-0029    |
| 21 | COVER SHEET                   | YSC-ERS.TK-LZ-0017    |
| 22 | SPEED GEAR 1                  | YDK-ERS.TK-CN-0017    |
| 23 | SPEED GEAR 2                  | YDK-ERS.TK-CN-0018    |
| 24 | SPEED GEAR 3                  | YDK-ERS.TK-CN-0019    |
| 25 | TRANSMISSION GEAR             | YDK-ERS.TK-CN-0016    |
| 26 | ARM PIN                       | YTL-ERS.TK-KS-0005    |
| 27 | ARM SPRING                    | M.YAY-ERS-008         |
| 28 | ARM HANDLE                    | YTL-ERS.TK-KS-0011    |
| 29 | GEAR SHAFT                    | YTL-ERS.TK-KS-0007    |
| 30 | TENSION PIPE                  | YBR-ERS.TK-KS-0003    |
| 31 | CONNECTING ELEMENT            | YDK-ERS.TK-CN-0028    |
| 32 | ENGINE TABLE SHAFT            | YTL-ERS.TK-KS-0013    |
| 33 | ARM PLATIN                    | M.PLTN-ERS-TK-001     |
| 34 | CONDITIONAL CONSERVATION FOOT | YSC-ERS.TK-LZ-0002    |
| 35 | PG-11 CABLE FITTING           | M.ELK-RKR-PLS-005     |
| 36 | NUT                           | YDK-ERS.TK-CN-0022    |
| 37 | MOVEMENT ARM U SHEET          | YSC-ERS.TK-LZ-0003    |
| 38 | HANDLE                        | ERS.M.AKS-KLP-BKL-007 |
| 39 | SLED                          | YDK-ERS.TK-CN-0021    |
| 40 | STOP ARM                      | YLS-ERS.TK-KS-0005    |
| 41 | SLIDE BAR                     | YLS-ERS.TK-KS-0001    |
| 42 | BUSH                          | YTL-ERS.TK-KS-0012    |
| 43 | CONDITIONAL CONSERVATION FOOT | YSC-ERS.TK-LZ-0021    |
| 44 | THERMAL SWITCH                | M.ELK-SLT-BT-002      |
| 45 | SHAFT LOCATION                | YDK-ERS.TK-CN-0027    |
| 46 | COVER PIN                     | YTL-ERS.TK-KS-0016    |
| 47 | COVER LOCK PIN                | YTL-ERS.TK-KS-0004    |
| 48 | ELBOW NUT                     | YDK-ERS.TK-CN-0007    |
| 49 | BRACKET                       | YDK-ERS.TK-CN-0001    |
| 50 | THIN STAR WASHER              | YSC-ERS.TK-LZ-0045    |
| 51 | NUT                           | YDK-ERS.TK-CN-0002    |
| 52 | MEATBALL APPARATUS SHEET      | YSC-ERS.TK-LZ-0011    |
| 53 | COVER NUT                     | YDK-ERS.TK-CN-0003    |
| 54 | KEY                           | YMH-ERS.TK-FGL-0002   |
| 55 | WIRE CUTTING PLACE            | YDK-ERS.TK-CN-0008    |
| 56 | CUTTING WIRE COVER SHEET      | YSC-ERS.TK-LZ-0012    |
| 57 | THICK STAR WASHER             | YSC-ERS.TK-LZ-0044    |
| 58 | COVER GASKET                  | M.CNT-ERS-012         |

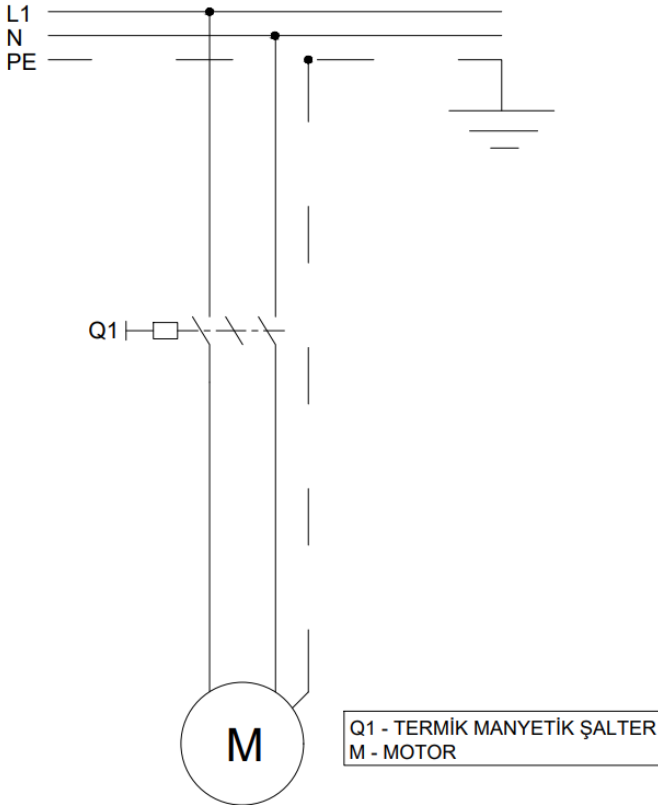


# SEMOLINA PASTA PREPARATION AND MEATBALL SHAPERS

|    |                       |                       |
|----|-----------------------|-----------------------|
| 59 | HOPPER COVER          | YDK-ERS.TK-CN-0026    |
| 60 | PISTON GASKET         | M.CNT-ERS-011         |
| 61 | PISTON                | YDK-ERS.TK-CN-0025    |
| 62 | RECEPTACLE            | YDK-ERS.TK-CN-0024    |
| 63 | THROWER SHAFT         | YTL-ERS.TK-KS-0009    |
| 64 | CRANK AXLE            | YTL-ERS.TK-KS-0008    |
| 65 | WHEEL                 | M.AKS-TKR-KN-001      |
| 66 | CHASSIS               | -                     |
| 67 | 32'LİK OUTER WEDGE    | M.PLS-ERS-013         |
| 68 | ARM RUBBER            | M.ENJ-ERS-LST-013     |
| 69 | 3*1,50 MM CABLE       | HEL-KB-TT-3*1,5-SYH   |
| 70 | MALE PLUG             | M.ELK-PWR-ERK-003     |
| 71 | RING 471-40           | B-SEG-SYH-014         |
| 72 | BEARING ( 608 Z )     | ERS.M.RLM-NRM-001     |
| 73 | CUTTING WIRE          | M.MUH-070             |
| 74 | evacuation time relay | M.ELK-KNT-ROL-026     |
| 75 | CONTACTOR LC1K0910M   | ERS.M.ELK-KNT-KNT-021 |

# SEMOLINA PASTA PREPARATION AND MEATBALL SHAPERS

## H ELECTRIC CIRCUIT SCHEMA

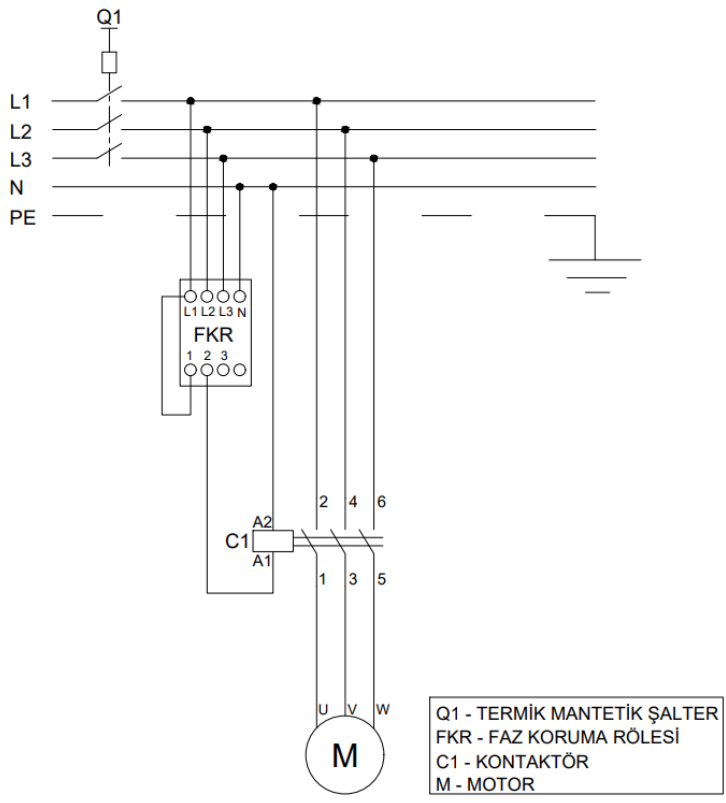


| PRODUCT CODE | POWER (KW) | RPM  | VOLTAGE |
|--------------|------------|------|---------|
| TK.01        | 0,37       | 1400 | 220     |
| TK.05        | 0,37       | 1400 | 220     |

| M                           | A1                      |
|-----------------------------|-------------------------|
| Motor 0,37 Kw 1400 rpm 220V | Thermic Magnetic Switch |

# SEMOLINA PASTA PREPARATION AND MEATBALL SHAPERS

## H ELECTRIC CIRCUIT SCHEMA



| PRODUCT CODE | POWER (KW) | RPM  | VOLTAGE |
|--------------|------------|------|---------|
| TK.02        | 0,37       | 1400 | 380     |
| TK.06        | 0,37       | 1400 | 380     |

| M                            | A1                      |
|------------------------------|-------------------------|
| Motor 0,37 Kw 1400 rpm 380 V | Thermic Magnetic Switch |