



ELECTRIC CHIPS WARMER

CONTENTS

A	GENERAL INFORMATION	Page 2
A1	PRODUCT DESCRIPTION	Page 3
A2	TECHNICAL INFORMATION.....	Page 3
A3	TRANSPORTATION	Page 4
A4	UNPACKING	Page 4
B	INSTALLATION	Page 4
C	SAFETY INSTRUCTIONS.....	Page 5
D	OPERATION	Page 6
E	CLEANING & MAINTENANCE	Page 7
F	TROUBLESHOOTING	Page 8
G	SPARE PART LIST- EXPLODING DRAWING	Page 9
H	ELECTRIC CIRCUIT SCHEMA	Page 15

A GENERAL INFORMATION

Before installing the appliance, read operation and maintenance instructions carefully. Wrong installation and part changing may damage the product or may cause injury on people. These are not in our company's responsibility to damage the appliance intentionally, negligence, detriments because of disobeying instructions and regulations, wrong connections. Unauthorized intervention to appliance invalidates the warranty.

1. This instruction manual should be kept in a safe place for future reference.
2. **Installation should be made in accordance with ordinances and security rules of that country by a qualified service personnel.**
3. This appliance has to be used by trained person.
4. Please turn off the appliance immediately in the event of malfunction or failure. The appliance should be repaired only by authorized service personnel. Please demand original spare part.

ELECTRIC CHIPS WARMER

A1 PRODUCT DESCRIPTION

*The Professional Electric Chips Warmer ,that provides high efficiency has been designed to be used in industrial kitchens.

Product Code	Dimensions (mm)	Weight (kg)	Packaging Dimensions (mm)
EMP.6DE010	400x635x285	15	480x760x600
EMP.PLS.7DE010	400X760X300	20	480x860x620
EMP.PLS.9DE010	400x900x300	20	480x860x620

A2 TECHNICAL INFORMATIONS

Product Code	Electric Inlet	Cable (mm ²)	Power (KW)	Capacity (mm)
EMP.6DE010	230 V. AC N PE	3x1,5	0,65	GN 1/1x150
EMP.PLS.7DE010	230 V.AC N PE	3X1,5	0,65	GN1/1X150
EMP.PLS.9DE010	230 V. AC N PE	3x1,5	0,65	GN 1/1x150

A3 TRANSPORTATION

* This appliance can not be moved by hand from area to area. Therefore Use a hauling truck (forklift or pallet jack) to move the appliance. (The lifting arms of the of forklift or pallet jack must reach up to more than half part of t appliance underneath.

A4 UNPACKING

*Please unpack the package according to the security codes and ordinances of current country and get rid from the pack.Parts which contacts with food are produced by stainless steel.All plastic parts are marked by material's symbol.

*Please check that all the parts of appliance had come completely and if they are damaged or not during the shipping.

B INSTALLATION

*Please place the product to straight and sturdy ground,please take necessary steps against possibility of overturn.

*Technician who will serve for installation and service for the appliance must be professional on this subject and must have installation and service licenses by the company.

*Connection to Electric Power Supply must be done by authorized person.

*Please be sure that the voltage connected to appliance must be equal with the voltage which is on appliance's label.



This appliance must be connected to an earthed outlet in accordance with safety rules and standards.









*Appliance's earthing must be connected to earthing line on panel which is nearest to electric installation.

*Connection to the main fuse and leak current fuse must be done in accordance with the current regulations.

*If the location where electric chips warmer placed is covered with nonflammable heat insulation material,the distance between them must be 5 cm.Otherwise it should be at least 20 cm.The appliance shouldn't be operated under chimney hood.

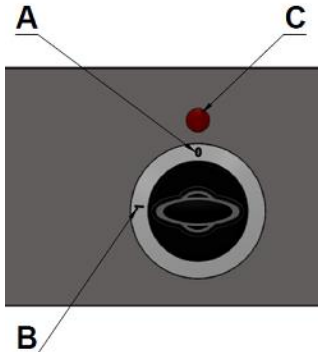
ELECTRIC CHIPS WARMER

C SAFETY INSTRUCTIONS

-  *Do not use the appliance in insufficient lighted place.
-  *Do not touch the moving attachments while the appliance operates.
-  *Do not install the appliance in the presence of flammable or explosive materials.
-  *Do not operate the appliance when the machine is empty.
-  *Do not load so less or more than appliance's capacity.
-  *Do not attempt to use the appliance without suitable protective equipments.
-  *Because of any reason if there is a fire or flame flare where the appliance is used, turn off all gas valves and electric contactor switch quickly and use fire extinguisher. Never use water to extinguish the fire.
-  *All the damages because of not having earthing connection will not be on warranty.

D OPERATION

*Control Panel;



- A : OFF position
- B : ON position
- C : Indicator lamp

* Operating;

- Place the perforated filter into the tank before operating the appliance.
- Plug in the appliance.
- In order to adjust the temperature of the appliance, switch thermostat to desired temperature (I). Pay attention to temperature data on switch.
- The ceramic resistance is operated by switching thermostat. Indicator lamp that is on switch signals during the operation of resistance. When the ceramic heater works, thermostat steps in. If the machine is stopped, signal lamps are off.
- Put the fried potatoes into the tank during the heating of tank. By the way, oil will be filtered and temperature will be kept.
- While the switch is on indicator temperature, the ceramic resistance in the tank will heat the potatoes in the tank. Then the tank temperature will reach to indicator temperature.
- After process switch the thermostat to (0) position and unplug the appliance.

ELECTRIC CHIPS WARMER

E CLEANING & MAINTENANCE

➤ CLEANING AND MAINTENANCE AFTER EVERY USE

- Always turn off the appliance and disconnect from the power supply before cleaning.
- Clean the outer surface of the appliance with moist cloth and chrome shiner.
- Do not use abrasive cleaning chemicals as these can leave harmful residues.
- Do not clean the appliance by spraying water directly, otherwise electric motor may get damaged.
- Take off the basket and filter that are in tank while cleaning the inside of the appliance.

➤ PERIODIC CLEANING AND MAINTENANCE

- Maintenance should be done by qualified person.
- Get the periodic maintenance of the appliance once in every 15 days.
- It may be necessary to take off the fried potato oil that is filtered from the tank. Otherwise the oils kept there for along time may cause sticky residues.
- Maintenance of the appliance's contactor should be done by compressed air according to frequency of use.



ELECTRIC CHIPS WARMER

F TROUBLESHOOTING

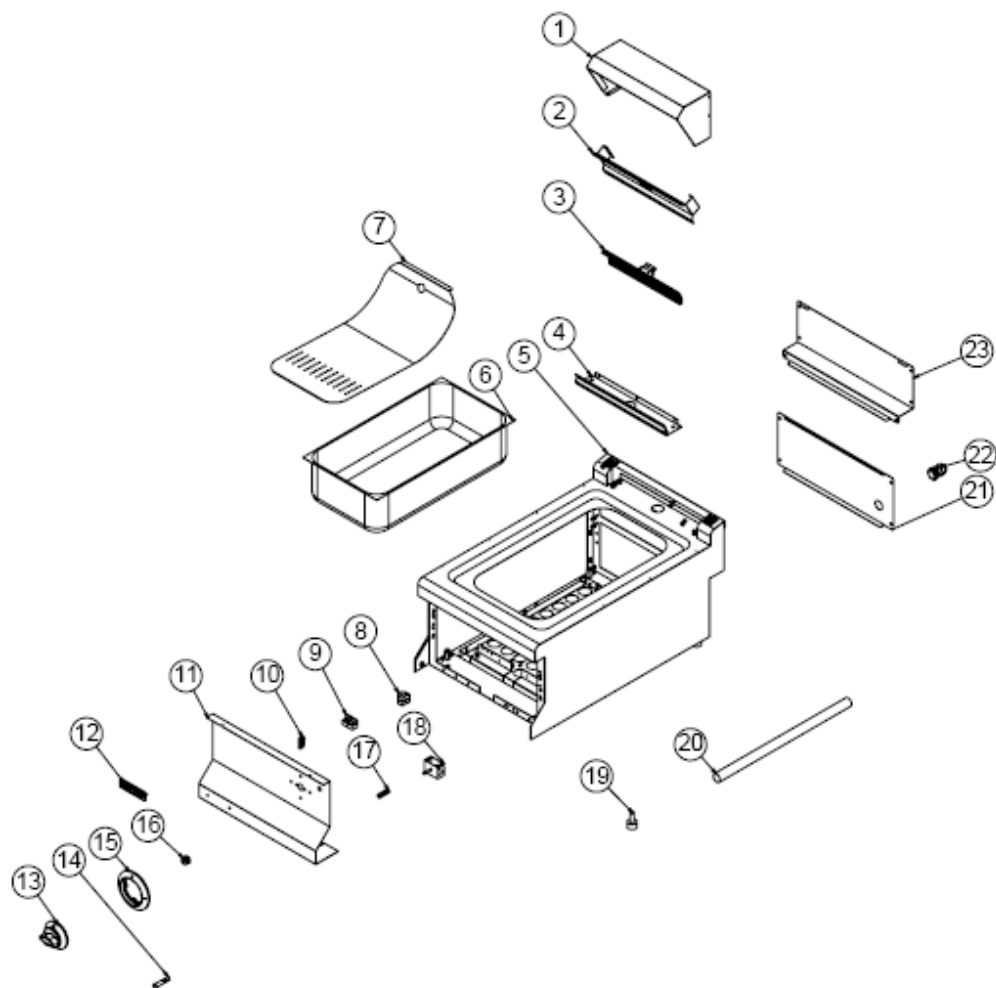
THE APPLIANCE DOESN'T OPERATE	<ol style="list-style-type: none">1. Check if the appliance is plugged in.2. Check the electrical connections and voltage.3. Check if the fuse is on or off.
THE POTATOES DONT REMAIN AT SUITABLE TEMPERATURE	<ol style="list-style-type: none">1. Check the ceramic resistance.2. If it is overloaded, discharge the tank.
THE APPLIANCE STOPPED	<ol style="list-style-type: none">1. The appliance can stop due to low voltage. In this situation check the voltage.

<ul style="list-style-type: none">• If warming the chips is not done at suitable quality• If any function of security doesn't work<ul style="list-style-type: none">➤ Do not use the appliance.
--

*** If these problems are still going on, contact with our authorized services.**

ELECTRIC CHIPS WARMER

G SPARE PART LIST-EXPLODING DRAWING



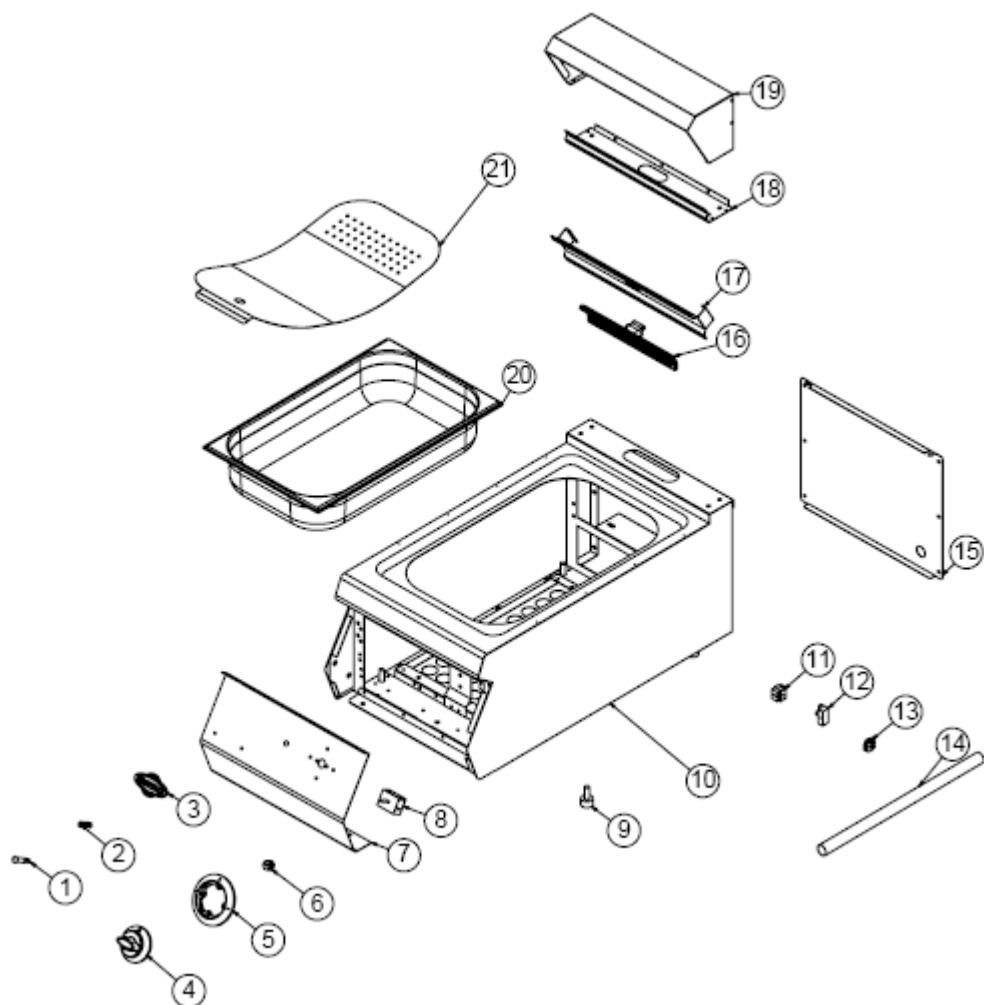
EMP.6DE010

G SPARE PART LIST-EXPLODING DRAWING

PRODUCT CODE: EMP.6DE010		
NO	PRODUCT NAME	P.CODE
1	HEATER CONNECTING TOP SHEET	YSC-KNX.PG7-LZ-0800
2	RESISTANCE CONNECTION S/S SHEET	YSC-KNX.PG7-LZ-0569
3	HEATER 650W 230V (245*60)	JP.M.ELK-RZS-SRM-DIN-007
4	HEATER CONNECTION BOTTOM SHEET	YSC-KNX.PG7-LZ-0799
5	CHASSIS	-
6	GN CONTAINER	M.MTS-JP-600-008
7	FILTER SHEET	YSC-KNX.SNC-LZ-0140
8	TERMINAL	M.ELK-KLM-PRS-001
9	TERMINAL	M.ELK-KLM-PRS-003
10	NO:2 25 MM TERMINAL	M.ELK-KLM-RKL-4*4-SRY
11	FRONT PANEL	YSC-KNX.SNC-LZ-0141
12	TICKET	JP.M.AKS-OZL-MTL-001
13	BUTTON	M.AKS-DGM-EMP-024
14	SIGNAL LAMP	M.ELK-LMB-SNY-002
15	BUTTON BUFFER	M.AKS-DGM-EMP-018
16	BUTTON SOCKET 6 MM	M.AKS-DGM-SKT-002
17	M4 FRAME SPRING	M.YAY-PG-004
18	SWITCH 0-1	M.ELK-SLT-EGO-001
19	M10*35 FOOT	JP.M.AKS-AYK-PLS-002
20	ELECTRIC PIPE 300 MM	YBR-KNX.SNC-KS-0005
21	REAR BOTTOM SHEET	YSC-KNX.SNC-PN-0106
22	PG-16 CABLE FITTING	JP.M.ELK-RKR-PLS-001
23	REAR TOP SHEET	YSC-KNX.SNC-PN-0115

ELECTRIC CHIPS WARMER

G SPARE PART LIST-EXPLODING DRAWING



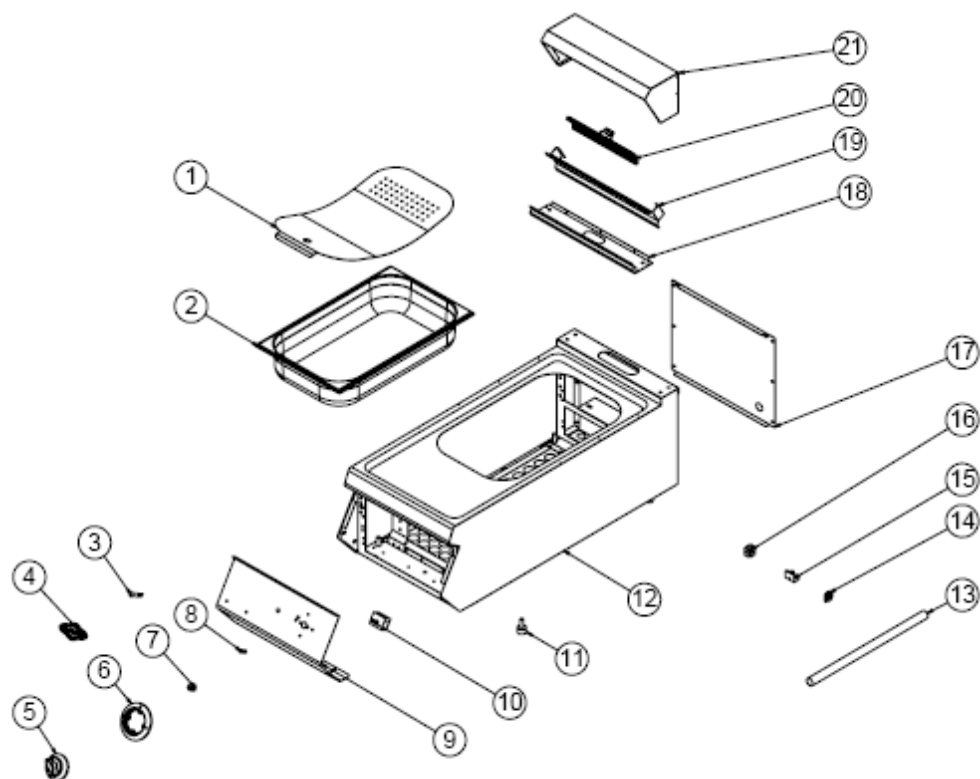
EMP.PLS.7DE010

G SPARE PART LIST-EXPLODING DRAWING

PRODUCT CODE: EMP.PLS.7DE010		
NO	PRODUCT NAME	P.CODE
1	SIGNAL LAMP	M.ELK-LMB-SNY-002
2	M4 FRAME SPRING	M.YAY-PG-004
3	TICKET	M.AKS-OZL-MTL-006
4	BUTTON	M.AKS-DGM-EMP-024
5	BUTTON BUFFER	M.AKS-DGM-EMP-018
6	BUTTON SOCKET 6 MM	M.AKS-DGM-SKT-002
7	FRONT PANEL	YSC-KNX.PG7-LZ-0389
8	SWITCH 0-1	M.ELK-SLT-EGO-001
9	M10*35 FOOT	JP.M.AKS-AYK-PLS-002
10	CHASSIS	-
11	TERMINAL	M.ELK-KLM-PRS-001
12	TERMINAL	M.ELK-KLM-PRS-003
13	NO:2 25 MM TERMINAL	M.ELK-KLM-RKL-4*4-SRY
14	CABLE PIPE 450 MM	YBR-KNX.PG9-KS-0002
15	BACK COVER SHEET	JP.YSC-KNX.PG7-PN-0391
16	HEATER 650W 230V (245*60)	JP.M.ELK-RZS-SRM-DIN-007
17	HEATER CONNECTION SHEET	YSC-KNX.PG7-PN-0400
18	HEATER CONNECTION BOTTOM SHEET	YSC-KNX.PG7-LZ-0841
19	HEATER BODY SHEET	YSC-KNX.PG7-LZ-0840
20	1/1*100 GN BATHTUBE	M.MTS-KNX-GNK-1/1-100
21	FILTER SHEET	YSC-KNX.PG7-LZ-0074

ELECTRIC CHIPS WARMER

G SPARE PART LIST-EXPLODING DRAWING



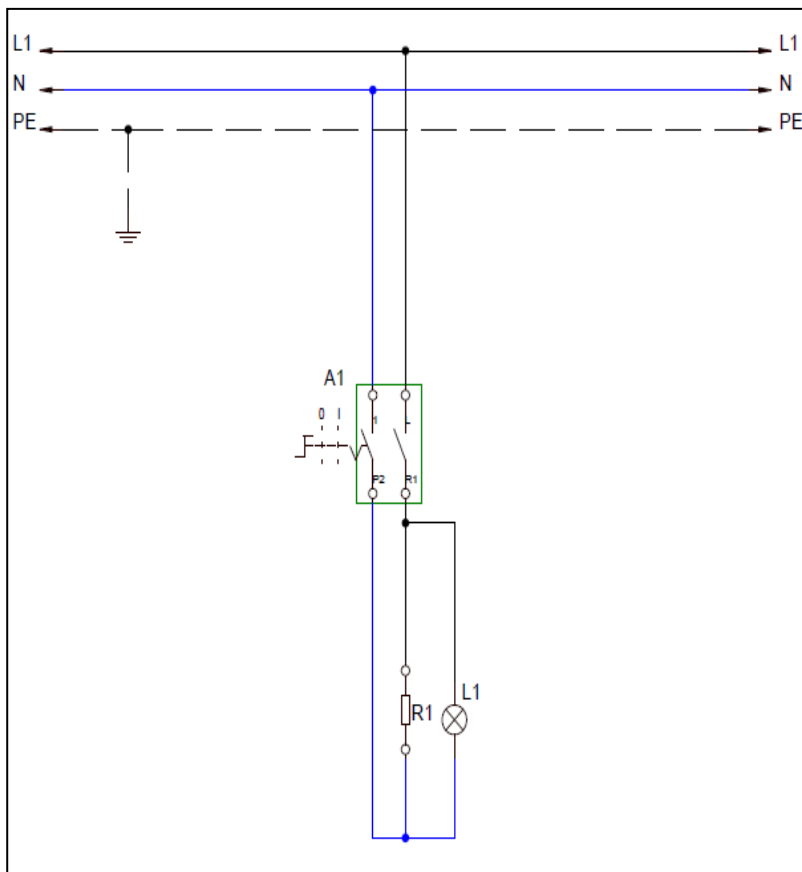
EMP.PLS.9DE010

G SPARE PART LIST-EXPLODING DRAWING

PRODUCT CODE: EMP.PLS.9DE010		
NO	PRODUCT NAME	P.CODE
1	FILTER SHEET	YSC-KNX.PG7-LZ-0074
2	1/1*100 GN BATHTUBE	M.MTS-KNX-GNK-1/1-100
3	SIGNAL LAMP	M.ELK-LMB-SNY-002
4	TICKET	M.AKS-OZL-MTL-006
5	BUTTON	M.AKS-DGM-EMP-024
6	BUTTON BUFFER	M.AKS-DGM-EMP-018
7	BUTTON SOCKET 6 MM	M.AKS-DGM-SKT-002
8	M4 FRAME SPRING	M.YAY-PG-004
9	FRONT PANEL	YSC-KNX.PG9-LZ-0751
10	SWITCH 0-1	M.ELK-SLT-EGO-001
11	M10*35 FOOT	JP.M.AKS-AYK-PLS-002
12	CHASSIS	-
13	CABLE PIPE 720 MM	YBR-KNX.PG9-KS-0004
14	NO:2 25 MM TERMINAL	M.ELK-KLM-RKL-4*4-SRY
15	TERMINAL	M.ELK-KLM-PRS-003
16	TERMINAL	M.ELK-KLM-PRS-001
17	BACK COVER SHEET	JP.YSC-KNX.PG7-PN-0391
18	HEATER CONNECTION BOTTOM SHEET	YSC-KNX.PG7-LZ-0841
19	HEATER CONNECTION SHEET	YSC-KNX.PG7-PN-0400
20	HEATER 650W 230V (245*60)	JP.M.ELK-RZS-SRM-DIN-007
21	HEATER BODY SHEET	YSC-KNX.PG7-LZ-0840

ELECTRIC CHIPS WARMER

H ELECTRIC CIRCUIT SCHEMA



A1	L1	R1
(0-1) position switch	Switch signal lamp	Resistance 650W 230V