

# ELECTRIC FRYERS

## CONTENTS

---

<b>A</b>	<b>GENERAL INFORMATION .....</b>	<b>Page 2</b>
A1	PRODUCT DESCRIPTION .....	Page 3
A2	TECHNICAL INFORMATION .....	Page 3
A3	TRANSPORTATION .....	Page 4
A4	UNPACKING .....	Page 4
<b>B</b>	<b>INSTALLATION .....</b>	<b>Page 4</b>
<b>C</b>	<b>SAFETY INSTRUCTIONS.....</b>	<b>Page 5</b>
<b>D</b>	<b>OPERATION .....</b>	<b>Page 6</b>
<b>E</b>	<b>CLEANING &amp; MAINTENANCE.....</b>	<b>Page 7</b>
<b>F</b>	<b>TROUBLESHOOTING .....</b>	<b>Page 8</b>
<b>G</b>	<b>SPARE PART LIST- EXPLODING DRAWING .....</b>	<b>Page 9</b>
<b>H</b>	<b>ELECTRIC CIRCUIT SCHEMA .....</b>	<b>Page 21</b>

## A GENERAL INFORMATION

---

Before installing the appliance, read operation and maintenance instructions carefully. Wrong installation and part changing may damage the product or may cause injury on people. These are not in our company's responsibility to damage the appliance intentionally, negligence, detriments because of disobeying instructions and regulations, wrong connections. Unauthorized intervention to appliance invalidates the warranty.

1. This instruction manual should be kept in a safe place for future reference.
2. **Installation should be made in accordance with ordinances and security rules of that country by a qualified service personnel.**
3. This appliance has to be used by trained person.
4. Please turn off the appliance immediately in the event of malfunction or failure. The appliance should be repaired only by authorized service personnel. Please demand original spare part.

# ELECTRIC FRYERS

## A1 PRODUCT DESCRIPTION

\*The Professional Electric Fryers ,that provides high efficiency has been designed to be used in industrial kitchens.

Product Code	Dimensions (mm)	Weight (kg)	Packaging Dimensions (mm)
<b>EMP.6FE010</b>	400x635x285	24	480x760x600
<b>EMP.6FE020</b>	600x660x285	36	700x760x600
<b>EMP.PLS.7FE010</b>	400x760x316	27	480X860X620
<b>EMP.PLS.7FE020</b>	800x760x316	44	900X840X620
<b>EMP.PLS.9FE010</b>	400X930X850	50	480x1000x1050
<b>EMP.PLS.9FE020</b>	800X930X850	88	900x1000x1050

## A2 TECHNICAL INFORMATION

Product Code	Electric Entrance	Cable (mm <sup>2</sup> )	Power (KW)	Capacity (lt)
<b>EMP.6FE010</b>	400 V. AC 3N PE	5x2,5	7,2	10
<b>EMP.6FE020</b>	400 V. AC 3N PE	5x2,5	14,4	2x10
<b>EMP.PLS.7FE010</b>	400 V. AC 3N PE	5X2,5	10,5	14
<b>EMP.PLS.7FE020</b>	400 V. AC 3N PE	5X2,5	21	2x14
<b>EMP.PLS.9FE010</b>	400 V. AC 3N PE	5X4	18	24
<b>EMP.PLS.9FE020</b>	400 V. AC 3N PE	5X6	36	2x24

### **A3      TRANSPORTATION**

---

\*This appliance can be moved by hand from area to area. Do not crash and drop the appliance while transporting.

### **A4      UNPACKING**

---

\*Please unpack the package according to the security codes and ordinances of current country and get rid from the pack. Parts which contacts with food are produced by stainless steel. All plastic parts are marked by material's symbol.

\*Please check that all the parts of appliance had come completely and if they are damaged or not during the shipping.

### **B        INSTALLATION**


---

\*Please place the product to straight and sturdy ground, please take necessary steps against possibility of overturn.

\*Technician who will serve for installation and service for the appliance must be professional on this subject and must have installation and service licenses by the company.

\*Connection to Electric Power Supply must be done by authorized person.

\*Please be sure that the voltage connected to appliance must be equal with the voltage which is on appliance's label.

 This appliance must be connected to an earthed outlet in accordance with safety rules and standards.

\*Appliance's earthing must be connected to earthing line on panel which is nearest to electric installation.












\*Connection to the main fuse and leak current fuse must be done in accordance with the current regulations.

\*If the location where electric fryers placed is covered with nonflammable heat insulation material, the distance between them must be 5 cm. Otherwise it should be at least 20 cm. The appliance shouldn't be operated under chimney hood.

## ELECTRIC FRYERS

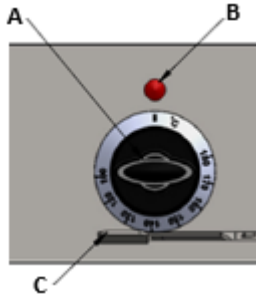
### C SAFETY INSTRUCTIONS

---

-  \*Do not use the appliance in insufficient lighted place.
-  \*Do not touch the moving attachments while the appliance operates.
-  \*Do not install the appliance in the presence of flammable or explosive materials.
-  \*Do not operate the appliance when the machine is empty.
-  \*Do not load so less or more than appliance's capacity.
-  \*Do not attempt to use the appliance without suitable protective equipments.
-  \*Because of any reason if there is a fire or flame flare where the appliance is used, turn off all gas valves and electric contactor switch quickly and use fire extinguisher. Never use water to extinguish the fire.
-  \*All the damages because of not having earthing connection will not be on warranty.
-  \*Level of oil mustn't be less than minimum level. Otherwise it can be ignited.
-  \*Level of oil mustn't be more than maximum level. Otherwise the oil that overflows from fryer may cause combustion.
-  \*Do not put the unstrained and frozen foods into the hot oil.

## D OPERATION

### \*Control Panel;



A : Heat setting button

B : Indicator lamp

C : Sliding attachment

### \* Operating;

- Before operating the fryer, place filter and filter into the tank.
- Turn the sliding ratchet that is on oil evacuation pipet o the left and turn off the drainage taps.
- Open the lid and put oil to the tank. Pay attention to both minimum and maximum lines while adding oil into the tank.
- Plug in the appliance.
- Set the thermostat switch to desired heat in order to operate the appliance.
- Fryers are 2 type; single-tank, double-tank. There are 2 resistances and thermostats in every tank. If thermostat switch is set to on position, the heaters start to work and indicator lamp that is on thermostat signals.
- When the oil temperature reaches indicator temperature, heaters are disabled through the agency of limit thermostat. When the oil temperature is lower than indicator temperature, the limit thermostat steps in and heaters start to work.
- Put the materials that will be fried into the tank in the basket during oil heating.
- After putting the materials into the tank close the lid and start to fry.
- Add oil when the oil is at minimum level.
- After frying process, switch the thermostat to (0) position and unplug the appliance.
- Open the lid and take off the basket from tank.
- In order to remove the oil from fryer, first leave the oil to be cooled. Then attach the oil drainage pipe to the oil drainage hole.
- Slide the sliding sled to the right to remove the oil.

## ELECTRIC FRYERS

### **E      CLEANING & MAINTENANCE**

---

#### ➤ **CLEANING AND MAINTENANCE AFTER EVERY USE**

- Always turn off the appliance and disconnect from the power supply before cleaning.
- Clean the outer surface of the appliance with a wet cloth and chrome shiner.
- Do not use abrasive cleaning chemicals as these can leave harmful residues.
- Do not clean the appliance by spraying water directly, otherwise electric motor may get damaged.
- While cleaning the inside of the fryer, lift the heater handle, unsettle the heaters that are in the tank and take them to vertical position. Take off the baskets and filter that are in the tank.

#### ➤ **PERIODIC CLEANING AND MAINTENANCE**

- Maintenance should be done by qualified person.
- Get the periodic maintenance of the appliance once in every 15 days.
- Clean the oil tank in periodic times. Fill the tank with water and heat. This process will help to remove frozen and stucked oil.
- Maintenance of the appliance's contactor should be done by compressed air according to frequency of use.

**F TROUBLESHOOTING**

<b>THE APPLIANCE DOESN'T OPERATE</b>	<ol style="list-style-type: none"><li>1. Check if the appliance is plugged in.</li><li>2. Check the electrical connections and voltage.</li><li>3. Check the resistances.</li></ol>
--------------------------------------	---

<b>THE APPLIANCE DOESN'T FRY WELL</b>	<ol style="list-style-type: none"><li>1. Check the level of oil.</li><li>2. Check the thermostat switch.If the oil can not be heated as desired,contact with authorized service.</li></ol>
---------------------------------------	--

<b>THE APPLIANCE STOPPED</b>	<ol style="list-style-type: none"><li>1. If the oil temperature reaches to 230°C while the appliance is operating,limit thermostat will stop the circuit.In this situation the appliance can not be operated.Leave the oil to be cooled to operate again.Then take off the thermostat switch that is on front panel and press the red button with a thin tool.</li><li>2. The appliance can stop due to low voltage.In this situation check the voltage.</li></ol>
------------------------------	--

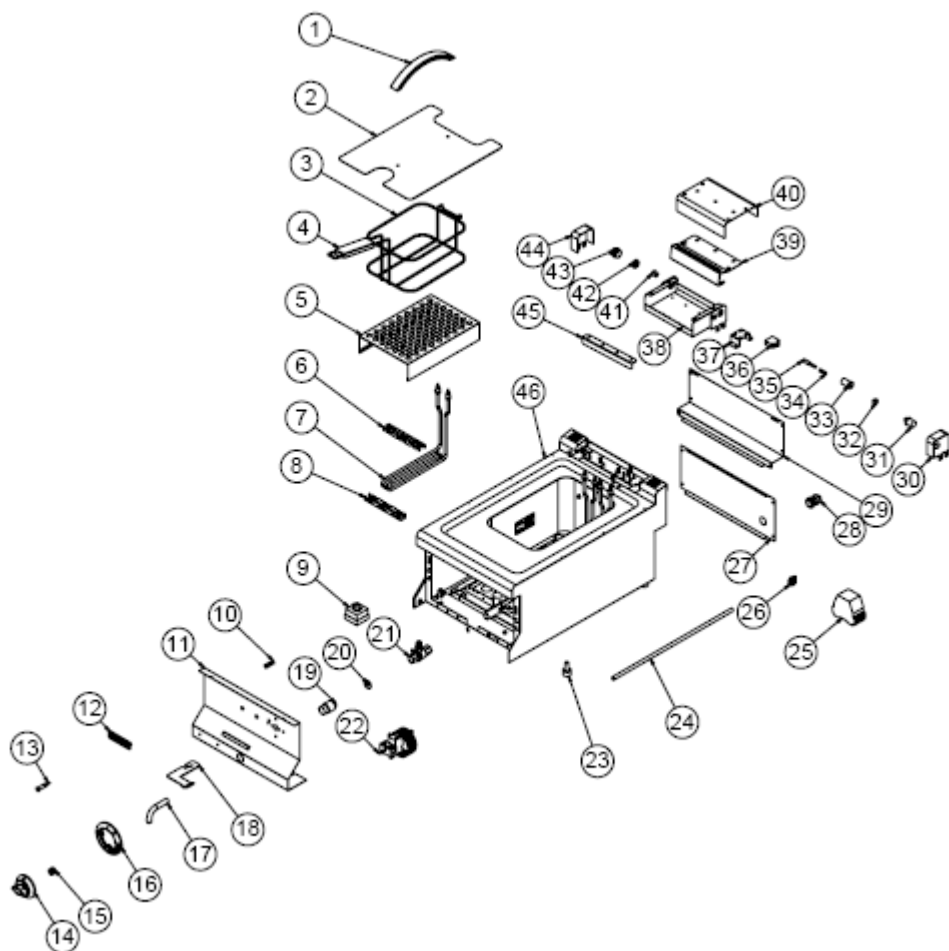
- If frying is not done at suitable quality
- If any function of security doesn't work
  - Do not use the appliance.

**\*If these problems are still going on,contact with our authorized services.**



# ELECTRIC FRYERS

## G SPARE PART LIST-EXPLODING DRAWING



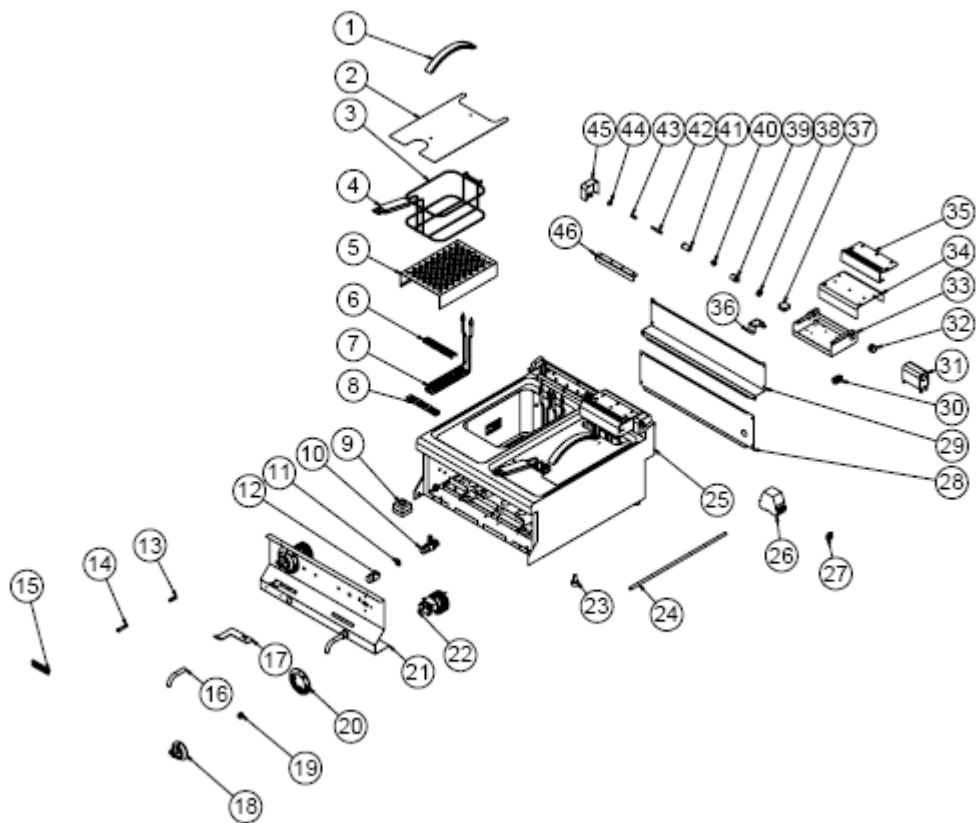
EMP.6FE010

## G SPARE PART LIST-EXPLODING DRAWING

PRODUCT CODE: EMP.6FE010		
NO	PRODUCT NAME	P.CODE
1	243MM LONG HANDLE	M.AKS-KLP-LUX-003
2	TOP COVER SHEET	YSC-KNX.SNC-LZ-0204
3	26*20*12 CM BASKET	M.AKS-SPT-INX-002
4	16CM HANDLE	M.AKS-KLP-BKL-007
5	BASKET BOTTOM SHEET	YSC-KNX.SNC-PN-0139
6	RESISTANCE CONNECTION S/S TOP SHEET	YSC-KNX.SNC-LZ-0243
7	121967 230V 2400W RESISTANCE	M.ELK-RZS-BRU-FRT-014
8	RESISTANCE CONNECTION S/S BOTTOM SHEET	YSC-KNX.SNC-LZ-0242
9	230 °C LIMITOR	M.ELK-MEK-LMT-015
10	M4 FRAME SPRING	M.YAY-PG-004
11	FRONT PANEL	YSC-KNX.SNC-LZ-0142
12	TICKET	JP.M.AKS-OZL-MTL-001
13	SIGNAL LAMP	M.ELK-LMB-SNY-002
14	BUTTON	M.AKS-DGM-EMP-024
15	BUTTON SOCKET 6 MM	M.AKS-DGM-SKT-002
16	100-180 °C BUTTON BUFFER	M.AKS-DGM-EMP-023
17	DRAIN PIPE	YBR-KNX.SNC-KS-0010
18	VALVE ARM	YSC-KNX.SNC-LZ-0052
19	DRAIN BUSH Ø30 MM	YTL-KNX.SNC-KS-0009
20	ORING 3,5 * Ø 21	M.CNT-ORG-NP4-20-001
21	VALVE 1/2 75 MM	M.MEK-TES-INV-001
22	180 °C THERMOSTAT	M.ELK-MEK-TRM1-022
23	M10*35 FOOT	JP.M.AKS-AYK-PLS-002
24	ELECTRIC PIPE 300 MM	YBR-KNX.SNC-KS-0005
25	LC1K1210M7 CONTACTOR	JP.M.ELK-KNT-KNT-022
26	NO:2 25 MM TERMINAL	M.ELK-KLM-RKL-4*4-SRY
27	REAR BOTTOM SHEET	YSC-KNX.SNC-PN-0106
28	PG-16 CABLE FITTING	JP.M.ELK-RKR-PLS-001
29	REAR TOP SHEET	YSC-KNX.SNC-PN-0115
30	RESISTANCE CONNECTION S/S RIGHT SHEET	YSC-KNX.SNC-LZ-0147
31	HINGEBUSH	YTL-KNX.PG7-KS-0010
32	HANDLE	YTL-KNX.PG7-KS-0009
33	HINGEBUSH	YTL-KNX.SNC-KS-0010
34	SPRING Ø16*75MM	M.YAY-PG-001
35	HINGE SHAFT	YTL-KNX.SNC-KS-0011
36	SWITCH BS1010	M.ELK-SWC-EMAS-002
37	SWITCH CONNECTION SHEET	YSC-KNX.PG7-LZ-0337
38	RESISTANCE CONNECTION S/S MID SHEET	YSC-KNX.SNC-LZ-0145
39	BASKET HANG SHEET	YSC-KNX.SNC-LZ-0144
40	RESISTANCE CONNECTION S/S MID SHEET	YSC-KNX.SNC-LZ-0146
41	LOCK CONNECTION	YTL-KNX.PG7-KS-0008
42	HINGE NUT	YTL-KNX.PG7-KS-0027
43	HINGEBUSH	YTL-KNX.PG7-KS-0011
44	RESISTANCE CONNECTION S/S LEFT SHEET	YSC-KNX.SNC-LZ-0149
45	REINFORCEMENT SHEET	YSC-KNX.PG7-LZ-0339
46	CHASSIS	-

# ELECTRIC FRYERS

## G SPARE PART LIST-EXPLODING DRAWING



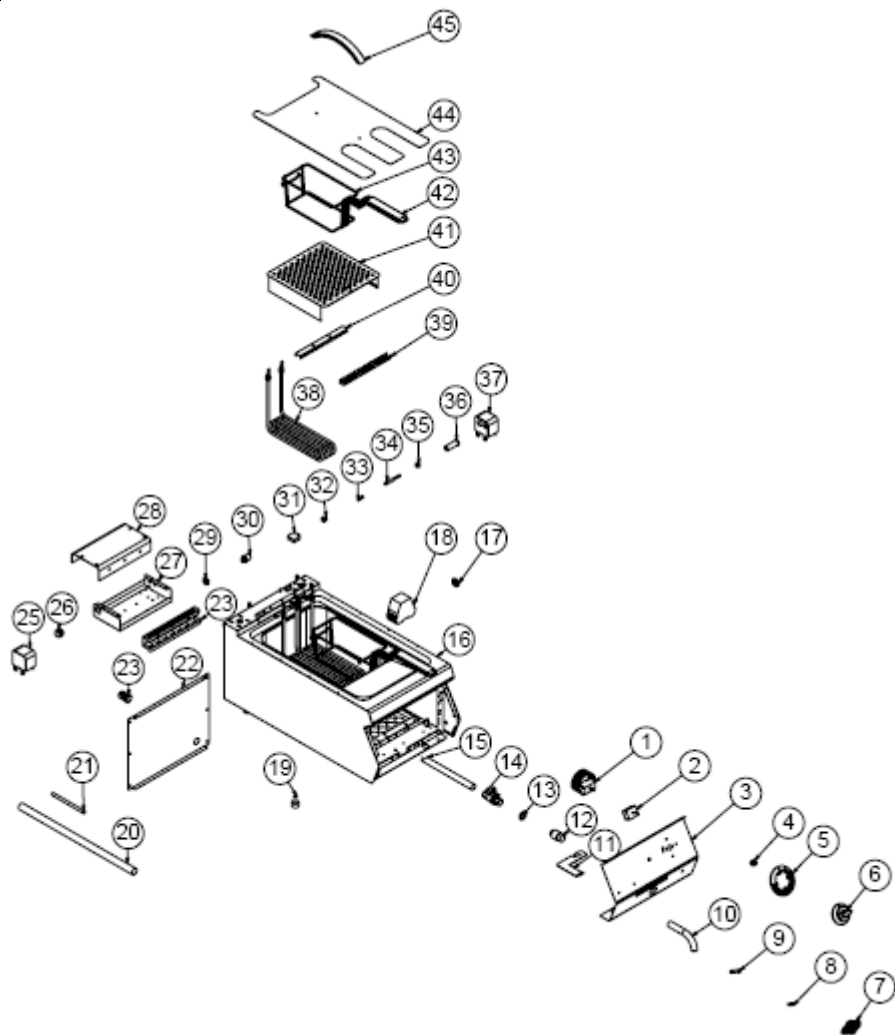
EMP.6FE020

## G SPARE PART LIST-EXPLODING DRAWING

PRODUCT CODE: EMP.6FE020		
NO	PRODUCT NAME	P.CODE
1	243MM LONG HANDLE	M.AKS-KLP-LUX-003
2	TOP COVER SHEET	YSC-KNX.SNC-LZ-0194
3	26*20*12 CM BASKET	M.AKS-SPT-INX-002
4	16CM HANDLE	M.AKS-KLP-BKL-007
5	BASKET BOTTOM SHEET	YSC-KNX.SNC-PN-0139
6	RESISTANCE CONNECTION S/S TOP SHEET	YSC-KNX.SNC-LZ-0243
7	121967 230V 2400W RESISTANCE	M.ELK-RZS-BRU-FRT-014
8	RESISTANCE CONNECTION S/S BOTTOM SHEET	YSC-KNX.SNC-LZ-0242
9	230 °C LIMITOR	M.ELK-MEK-LMT-015
10	VALVE 1/2 75 MM	M.MEK-TES-INV-001
11	ORING 3,5 * Ø 21	M.CNT-ORG-NP4-20-001
12	DRAIN BUSH Ø30 MM	YTL-KNX.SNC-KS-0009
13	M4 FRAME SPRING	M.YAY-PG-004
14	SIGNAL LAMP	M.ELK-LMB-SNY-002
15	TICKET	JP.M.AKS-OZL-MTL-001
16	DRAIN PIPE	YBR-KNX.SNC-KS-0010
17	VALVE ARM	YSC-KNX.SNC-LZ-0052
18	BUTTON	M.AKS-DGM-EMP-024
19	BUTTON SOCKET 6 MM	M.AKS-DGM-SKT-002
20	100-180 °C BUTTON BUFFER	M.AKS-DGM-EMP-023
21	FRONT PANEL	YSC-KNX.SNC-LZ-0154
22	180 °C THERMOSTAT	M.ELK-MEK-TRM1-022
23	M10*35 FOOT	JP.M.AKS-AYK-PLS-002
24	ELECTRIC PIPE 300 MM	YBR-KNX.SNC-KS-0005
25	CHASSIS	-
26	LC1K1210M7 CONTACTOR	JP.M.ELK-KNT-KNT-022
27	NO:2 25 MM TERMINAL	M.ELK-KLM-RKL-4*4-SRY
28	REAR BOTTOM SHEET	YSC-KNX.SNC-PN-0111
29	REAR TOP SHEET	YSC-KNX.SNC-LZ-0195
30	PG-16 CABLE FITTING	JP.M.ELK-RKR-PLS-001
31	RESISTANCE CONNECTION S/S MID SHEET	YSC-KNX.SNC-LZ-0153
32	HINGEBUSH	YTL-KNX.PG7-KS-0011
33	RESISTANCE CONNECTION S/S MID SHEET	YSC-KNX.SNC-LZ-0145
34	RESISTANCE CONNECTION S/S MID SHEET	YSC-KNX.SNC-LZ-0146
35	BASKET HANG SHEET	YSC-KNX.SNC-LZ-0144
36	SWITCH CONNECTION SHEET	YSC-KNX.PG7-LZ-0337
37	SWITCH BS1010	M.ELK-SWC-EMAS-002
38	HINGE NUT	YTL-KNX.PG7-KS-0027
39	HINGEBUSH	YTL-KNX.PG7-KS-0010
40	LOCK CONNECTION	YTL-KNX.PG7-KS-0008
41	HINGEBUSH	YTL-KNX.SNC-KS-0010
42	HINGE SHAFT	YTL-KNX.SNC-KS-0011
43	SPRING Ø16*75MM	M.YAY-PG-001
44	HANDLE	YTL-KNX.PG7-KS-0009
45	RESISTANCE CONNECTION S/S RIGHT SHEET	YSC-KNX.SNC-LZ-0147
46	REINFORCEMENT SHEET	YSC-KNX.PG7-LZ-0339

# ELECTRIC FRYERS

## G SPARE PART LIST-EXPLODING DRAWING



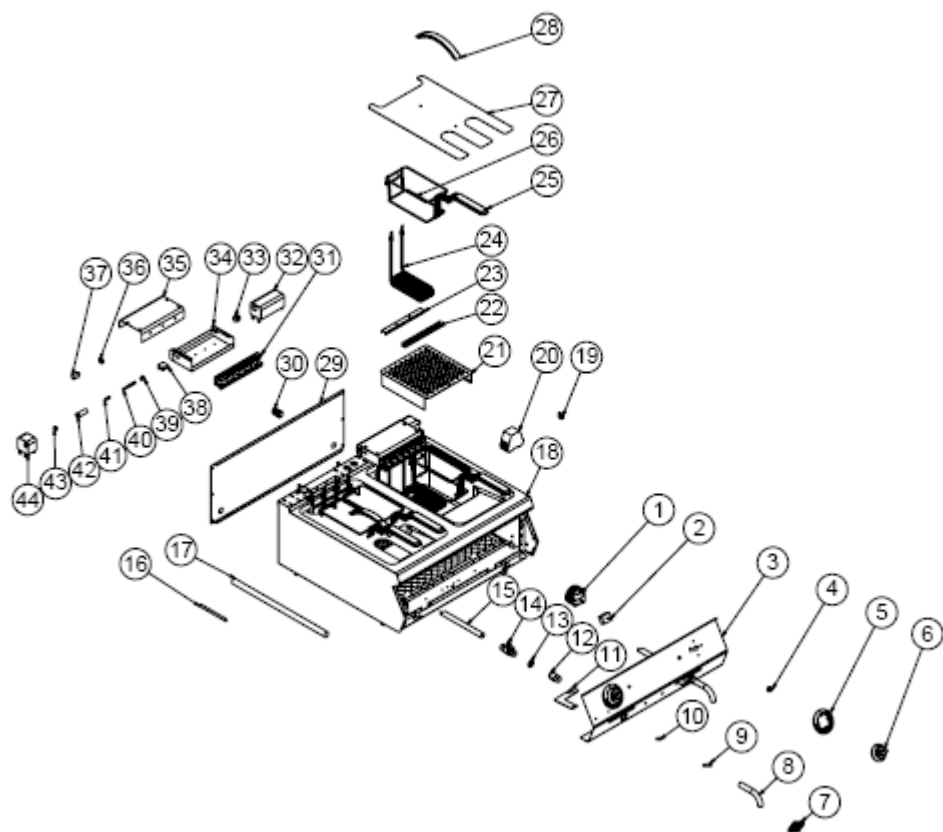
EMP.PLS.7FE010

## G SPARE PART LIST-EXPLODING DRAWING

PRODUCT CODE: EMP.PLS.7FE010		
NO	PRODUCT NAME	P.CODE
1	180 °C THERMOSTAT	M.ELK-MEK-TRM1-022
2	230 °C LIMITOR	M.ELK-MEK-LMT-015
3	FRONT PANEL	YSC-KNX.PG7-LZ-0662
4	BUTTON SOCKET 6 MM	M.AKS-DGM-SKT-002
5	100-180 °C BUTTON BUFFER	M.AKS-DGM-EMP-023
6	BUTTON	M.AKS-DGM-EMP-024
7	TICKET	M.AKS-OZL-MTL-006
8	M4 FRAME SPRING	M.YAY-PG-004
9	SIGNAL LAMP	M.ELK-LMB-SNY-002
10	DRAIN PIPE	YBR-KNX.SNC-KS-0010
11	VALVE ARM	YSC-KNX.PG7-LZ-1043
12	DRAIN BUSH Ø30 MM	YTL-KNX.SNC-KS-0009
13	ORING 3,5 * Ø 21	M.CNT-ORG-NP4-20-001
14	VALVE 1/2 75 MM	M.MEK-TE5-INV-001
15	DRAIN PIPE	YBR-KNX.PG7-KS-0018
16	CHASSIS	-
17	NO:2 25 MM TERMINAL	M.ELK-KLM-RKL-4*4-SRY
18	LC1K1210M7 CONTACTOR	JP.M.ELK-KNT-KNT-022
19	M10*35 FOOT	JP.M.AKS-AYK-PLS-002
20	CABLE PIPE 450 MM	YBR-KNX.PG9-KS-0002
21	PIPE 150MM	YBR-KNX.SNC-KS-0008
22	BACK COVER SHEET	JP.YSC-KNX.PG7-PN-0391
23	PG-16 CABLE FITTING	JP.M.ELK-RKR-PLS-001
24	HANGER SHEET METAL	YSC-KNX.PG7-LZ-0338
25	RESISTANCE CONEXION SHEET	YSC-KNX.PG7-LZ-0336
26	HINGEBUSH	YTL-KNX.PG7-KS-0011
27	RESISTANCE CONEXION SHEET	YSC-KNX.PG7-LZ-0843
28	RESISTANCE CONEXION SHEET	YSC-KNX.PG7-LZ-0842
29	HINGE NUT	YTL-KNX.PG7-KS-0027
30	HINGEBUSH	YTL-KNX.PG7-KS-0010
31	SWITCH BS1010	M.ELK-SWC-EMAS-002
32	LOCK CONNECTION	YTL-KNX.PG7-KS-0008
33	SPRING Ø14*75MM	M.YAY-PG-002
34	LOCK INNER SHAFT	YTL-KNX.PG7-KS-0007
35	HANDLE	YTL-KNX.PG7-KS-0009
36	LOCK OUTER BUSH	YTL-KNX.PG7-KS-0006
37	RESISTANCE CONEXION SHEET	YSC-KNX.PG7-LZ-0335
38	230V 3500W RESISTANCE	M.ELK-RZS-BRU-MKR-004
39	SUPPORT SHEET	YSC-KNX.PG7-LZ-0637
40	SUPPORT SHEET	YSC-KNX.PG7-LZ-0638
41	BASKET BOTTOM SHEET	YSC-KNX.PG7-PN-0912
42	16CM HANDLE	M.AKS-KLP-BKL-007
43	25*13*11 CM BASKET	M.AKS-SPT-INX-034
44	TOP COVER SHEET	YSC-KNX.PG7-LZ-0331
45	243MM LONG HANDLE	M.AKS-KLP-LUX-003

# ELECTRIC FRYERS

## G SPARE PART LIST-EXPLODING DRAWING



EMP.PLS.7FE020

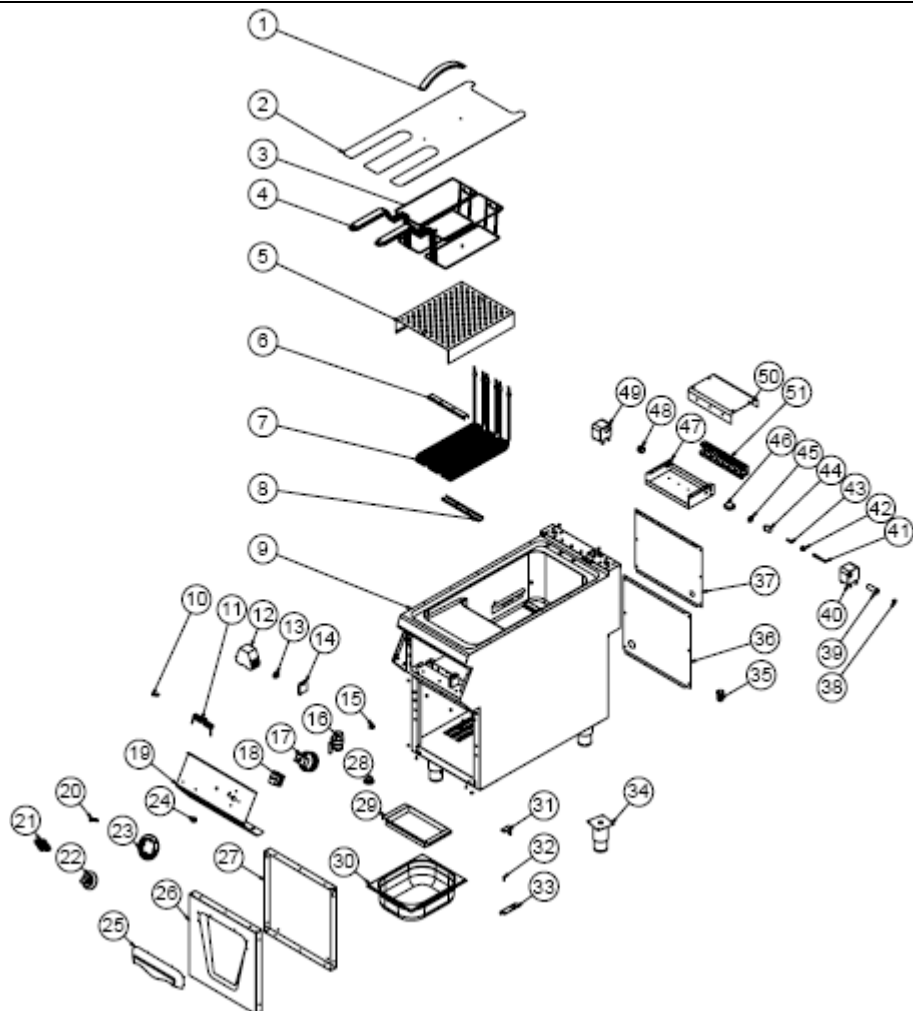
## G SPARE PART LIST-EXPLODING DRAWING

PRODUCT CODE: EMP.PLS.7FE020		
NO	PRODUCT NAME	P.CODE
1	180 °C THERMOSTAT	M.ELK-MEK-TRM1-022
2	230 °C LIMITOR	M.ELK-MEK-LMT-015
3	FRONT PANEL	YSC-KNX.PG7-LZ-0392
4	BUTTON SOCKET 6 MM	M.AKS-DGM-SKT-002
5	100-180 °C BUTTON BUFFER	M.AKS-DGM-EMP-023
6	BUTTON	M.AKS-DGM-EMP-024
7	TICKET	M.AKS-OZL-MTL-006
8	DRAIN PIPE	YBR-KNX.SNC-KS-0010
9	SIGNAL LAMP	M.ELK-LMB-SNY-002
10	M4 FRAME SPRING	M.YAY-PG-004
11	VALVE ARM	YSC-KNX.PG7-LZ-1043
12	DRAIN BUSH Ø30 MM	YTL-KNX.SNC-KS-0009
13	ORING 3,5 * Ø 21	M.CNT-ORG-NP4-20-001
14	VALVE 1/2 75 MM	M.MEK-TE5-INV-001
15	DRAIN PIPE	YBR-KNX.PG7-KS-0018
16	PIPE 150MM	YBR-KNX.SNC-KS-0008
17	CABLE PIPE 450 MM	YBR-KNX.PG9-KS-0002
18	CHASSIS	-
19	NO:2 25 MM TERMINAL	M.ELK-KLM-RKL-4*4-SRY
20	LC1K1210M7 CONTACTOR	JP.M.ELK-KNT-KNT-022
21	BASKET BOTTOM SHEET	YSC-KNX.PG7-PN-0912
22	SUPPORT SHEET	YSC-KNX.PG7-LZ-0637
23	SUPPORT SHEET	YSC-KNX.PG7-LZ-0638
24	230V 3500W RESISTANCE	M.ELK-RZ5-BRU-MKR-004
25	16CM HANDLE	M.AKS-KLP-BKL-007
26	25*13*11 CM BASKET	M.AKS-SPT-INX-034
27	TOP COVER SHEET	YSC-KNX.PG7-LZ-0331
28	243MM LONG HANDLE	M.AKS-KLP-LUX-003
29	BACK SHEET METAL	YSC-KNX.PG7-PN-0398
30	PG-16 CABLE FITTING	JP.M.ELK-RKR-PLS-001
31	HANGER SHEET METAL	YSC-KNX.PG7-LZ-0338
32	CONEXION SHEET	YSC-KNX.PG7-LZ-0393
33	HINGEBUSH	YTL-KNX.PG7-KS-0011
34	RESISTANCE CONEXION SHEET	YSC-KNX.PG7-LZ-0843
35	RESISTANCE CONEXION SHEET	YSC-KNX.PG7-LZ-0842
36	HINGE NUT	YTL-KNX.PG7-KS-0027
37	HINGEBUSH	YTL-KNX.PG7-KS-0010
38	SWITCH BS1010	M.ELK-SWC-EMAS-002
39	LOCK CONNECTION	YTL-KNX.PG7-KS-0008
40	LOCK INNER SHAFT	YTL-KNX.PG7-KS-0007
41	SPRING Ø14*75MM	M.YAY-PG-002
42	LOCK OUTER BUSH	YTL-KNX.PG7-KS-0006
43	HANDLE	YTL-KNX.PG7-KS-0009
44	RESISTANCE CONEXION SHEET	YSC-KNX.PG7-LZ-0335



# ELECTRIC FRYERS

## G SPARE PART LIST-EXPLODING DRAWING



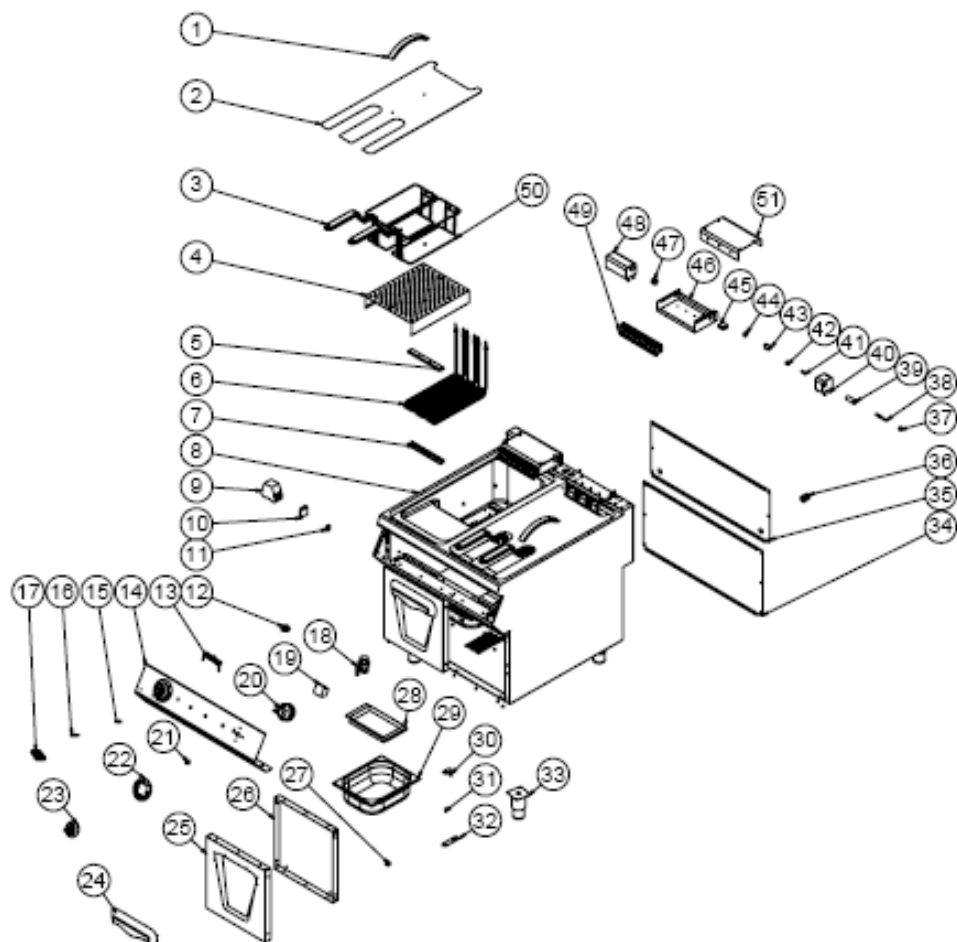
EMP.PLS.9FE010

## G SPARE PART LIST-EXPLODING DRAWING

PRODUCT CODE: EMP.PLS.9FE010		
NO	PRODUCT NAME	P.CODE
1	243MM LONG HANDLE	M.AKS-KLP-LUX-003
2	TOP COVER SHEET	YSC-KNX.PG9-LZ-0430
3	BASKET	M.AKS-SPT-INX-005
4	16CM HANDLE	M.AKS-KLP-BKL-007
5	BASKET BOTTOM SHEET	YSC-KNX.PG9-PN-0562
6	SUPPORT SHEET	YSC-KNX.PG7-LZ-0545
7	121968 230V 6000 W L:34 RESISTANCE	M.ELK-RZS-BRU-FRT-024
8	SUPPORT SHEET	YSC-KNX.PG7-LZ-0546
9	CHASSIS	-
10	M4 FRAME SPRING	M.YAY-PG-004
11	SPRING Ø14*75MM	M.YAY-PG-002
12	LC1D32M7 CONTACTOR	JP.M.ELK-KNT-KNT-030
13	NO:2 25 MM TERMINAL	M.ELK-KLM-RKL-4*4-SRY
14	AVK 16 TERMINAL	JP.M.ELK-KLM-058
15	Ø 22*7 MM MAGNET	M.MIK-PG-001
16	VALVE	JP.M.MEK-TEK-KVN-006
17	180 °C THERMOSTAT	M.ELK-MEK-TRM1-022
18	230 °C LIMITOR	M.ELK-MEK-LMT-015
19	FRONT PANEL	YSC-KNX.PG9-LZ-0751
20	SIGNAL LAMP	M.ELK-LMB-SNY-002
21	TICKET	M.AKS-OZL-MTL-006
22	BUTTON	M.AKS-DGM-EMP-024
23	100-180 °C BUTTON BUFFER	M.AKS-DGM-EMP-023
24	BUTTON SOCKET 6 MM	M.AKS-DGM-SKT-002
25	HANDLE	M.AKS-KLP-LUX-004
26	COVER OUTER SHEET	YSC-KNX.PG7-LZ-0488
27	COVER INTERNAL SHEET	YSC-KNX.PG7-PN-0456
28	RELEASE BUSH	YTL-KNX.PG7-KS-0022
29	FILTER FRAME SHEET	YSC-KNX.PG9-PN-0155
30	1/2*100 GN BATH	M.MTS-KNX-GNK-1/2-100
31	HINGE SHEET	YSC-KNX.PG7-LZ-0342
32	DOOR PIN	YTL-KNX.PG7-KS-0015
33	HINGE SHEET	YSC-KNX.PG7-LZ-0030
34	15 CM LEG	M.AKS-AYK-INX-001
35	PG-16 CABLE FITTING	JP.M.ELK-RKR-PLS-001
36	CABINET REAR SHEET	YSC-KNX.PG7-PN-0584
37	BACK COVER SHEET	JP.YSC-KNX.PG7-PN-0391
38	HANDLE	YTL-KNX.PG7-KS-0009
39	LOCK OUTER BUSH	YTL-KNX.PG7-KS-0006
40	RESISTANCE CONEXION SHEET	YSC-KNX.PG7-LZ-0335
41	LOCK INNER SHAFT	YTL-KNX.PG7-KS-0007
42	LOCK CONNECTION	YTL-KNX.PG7-KS-0008
43	Ø 8*35 SPRING	M.YAY-MUH-001
44	HINGEBUSH	YTL-KNX.PG7-KS-0010
45	HINGE NUT	YTL-KNX.PG7-KS-0027
46	SWITCH BS1010	M.ELK-SWC-EMAS-002
47	RESISTANCE CONEXION SHEET	YSC-KNX.PG7-LZ-0333
48	HINGEBUSH	YTL-KNX.PG7-KS-0011
49	RESISTANCE CONEXION SHEET	YSC-KNX.PG7-LZ-0336
50	RESISTANCE CONEXION SHEET	YSC-KNX.PG7-LZ-0334
51	HANGER SHEET METAL	YSC-KNX.PG7-LZ-0338

# ELECTRIC FRYERS

## G SPARE PART LIST-EXPLODING DRAWING



EMP.PLS.9FE020

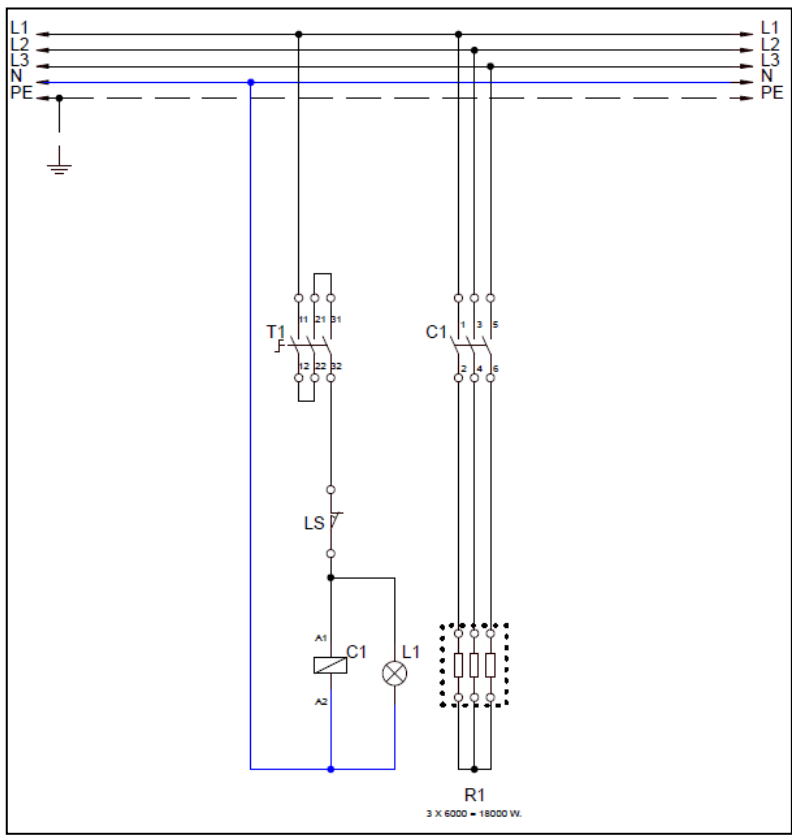
## G SPARE PART LIST-EXPLODING DRAWING

PRODUCT CODE : EMP.PLS.9FE020		
NO	PRODUCT NAME	P.CODE
1	243MM LONG HANDLE	M.AKS-KLP-LUX-003
2	TOP COVER SHEET	YSC-KNX.PG9-LZ-0430
3	16CM HANDLE	M.AKS-KLP-BKL-007
4	BASKET BOTTOM SHEET	YSC-KNX.PG9-PN-0562
5	SUPPORT SHEET	YSC-KNX.PG7-LZ-0545
6	121968 230V 6000 W L:34 RESISTANCE	M.ELK-RZS-BRU-FRT-024
7	SUPPORT SHEET	YSC-KNX.PG7-LZ-0546
8	CHASSIS	-
9	LC1D32M7 CONTACTOR	JP.M.ELK-KNT-KNT-030
10	AVK 16 TERMINAL	JP.M.ELK-KLM-058
11	NO:2 25 MM TERMINAL	M.ELK-KLM-RKL-4*4-SRY
12	RELEASE BUSH	YTL-KNX.PG7-KS-0022
13	SPRING Ø14*75MM	M.YAY-PG-002
14	FRONT PANEL	YSC-KNX.PG9-LZ-0752
15	M4 FRAME SPRING	M.YAY-PG-004
16	SIGNAL LAMP	M.ELK-LMB-SNY-002
17	TICKET	M.AKS-OZL-MTL-006
18	VALVE	JP.M.MEK-TES-KVN-006
19	230 °C LIMITOR	M.ELK-MEK-LMT-015
20	180 °C THERMOSTAT	M.ELK-MEK-TRM1-022
21	BUTTON SOCKET 6 MM	M.AKS-DGM-SKT-002
22	100-180 °C BUTTON BUFFER	M.AKS-DGM-EMP-023
23	BUTTON	M.AKS-DGM-EMP-024
24	HANDLE	M.AKS-KLP-LUX-004
25	COVER OUTER SHEET	YSC-KNX.PG7-LZ-0488
26	COVER INTERNAL SHEET	YSC-KNX.PG7-PN-0456
27	Ø 22*7 MM MAGNET	M.MIK-PG-001
28	FILTER FRAME SHEET	YSC-KNX.PG9-PN-0155
29	1/2*100 GN BATH	M.MTS-KNX-GNK-1/2-100
30	HINGE SHEET	YSC-KNX.PG7-LZ-0342
31	DOOR PIN	YTL-KNX.PG7-KS-0015
32	HINGE SHEET	YSC-KNX.PG7-LZ-0030
33	15 CM LEG	M.AKS-AYK-INX-001
34	CABINET REAR SHEET	YSC-KNX.PG7-PN-0586
35	BACK SHEET METAL	YSC-KNX.PG7-PN-0398
36	PG-16 CABLE FITTING	JP.M.ELK-RKR-PLS-001
37	HANDLE	YTL-KNX.PG7-KS-0009
38	LOCK INNER SHAFT	YTL-KNX.PG7-KS-0007
39	LOCK OUTER BUSH	YTL-KNX.PG7-KS-0006
40	RESISTANCE CONEXION SHEET	YSC-KNX.PG7-LZ-0335
41	Ø 8*35 SPRING	M.YAY-MUH-001
42	LOCK CONNECTION	YTL-KNX.PG7-KS-0008
43	HINGEBUSH	YTL-KNX.PG7-KS-0010
44	HINGE NUT	YTL-KNX.PG7-KS-0027
45	SWITCH BS1010	M.ELK-SWC-EMAS-002
46	RESISTANCE CONEXION SHEET	YSC-KNX.PG7-LZ-0333
47	HINGEBUSH	YTL-KNX.PG7-KS-0011
48	CONEXION SHEET	YSC-KNX.PG7-LZ-0393
49	HANGER SHEET METAL	YSC-KNX.PG7-LZ-0338
50	BASKET	M.AKS-SPT-INX-005

# ELECTRIC FRYERS

51	RESISTANCE CONEXION SHEET	YSC-KNX.PG7-LZ-0334
----	---------------------------	---------------------

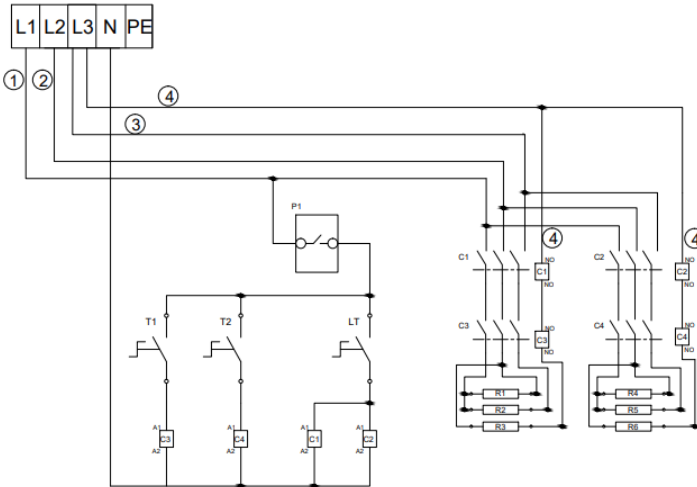
## H ELECTRIC CIRCUIT SCHEMA



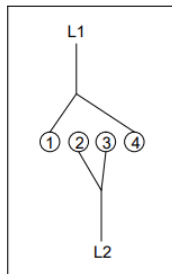
EMP.PLS.9FE010

T1	LS	C1	R1
Thermostat (135-180°C)	Limit Switch	Contactor	Rezistans 3x3500W

## H ELECTRIC CIRCUIT SCHEMA



LT - LIMIT CONTROL THERMOSTAT  
 T1/T2 - THERMOSTAT  
 P1 - 0/1 SWITCH  
 C1/C2/C3/C4 - CONTACTOR  
 R - RESISTANCE  
 TL1 - THERMOSTAT LIGHT 1  
 TL2 - THERMOSTAT LIGHT 2

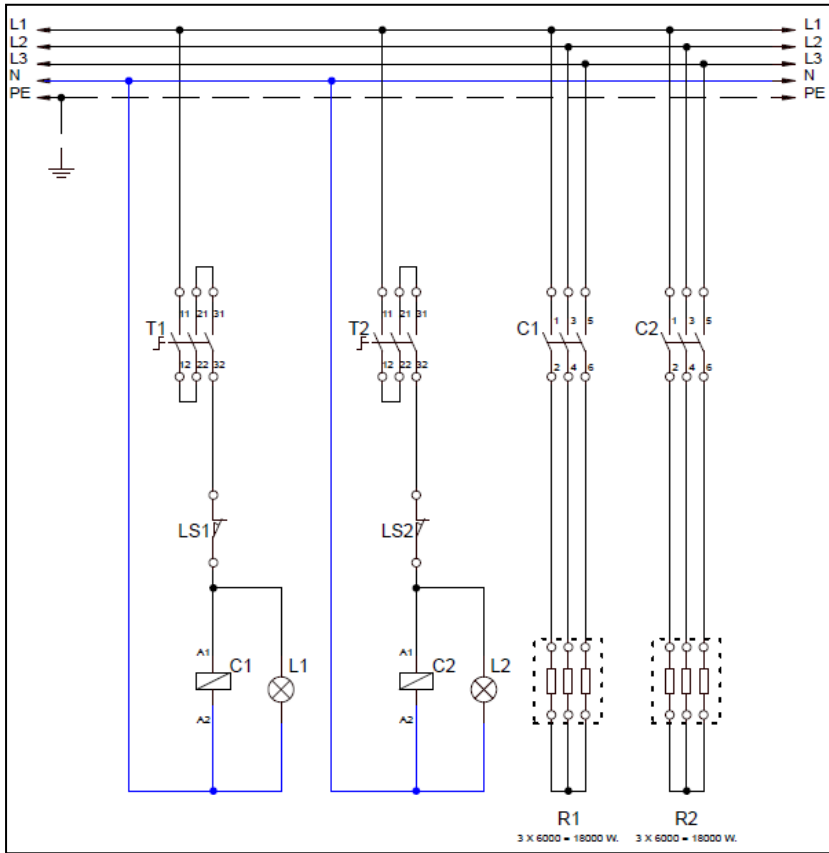


SINGLE  
 PHASE  
 CONNECTION

EMP.PLS.7FE010

# ELECTRIC FRYERS

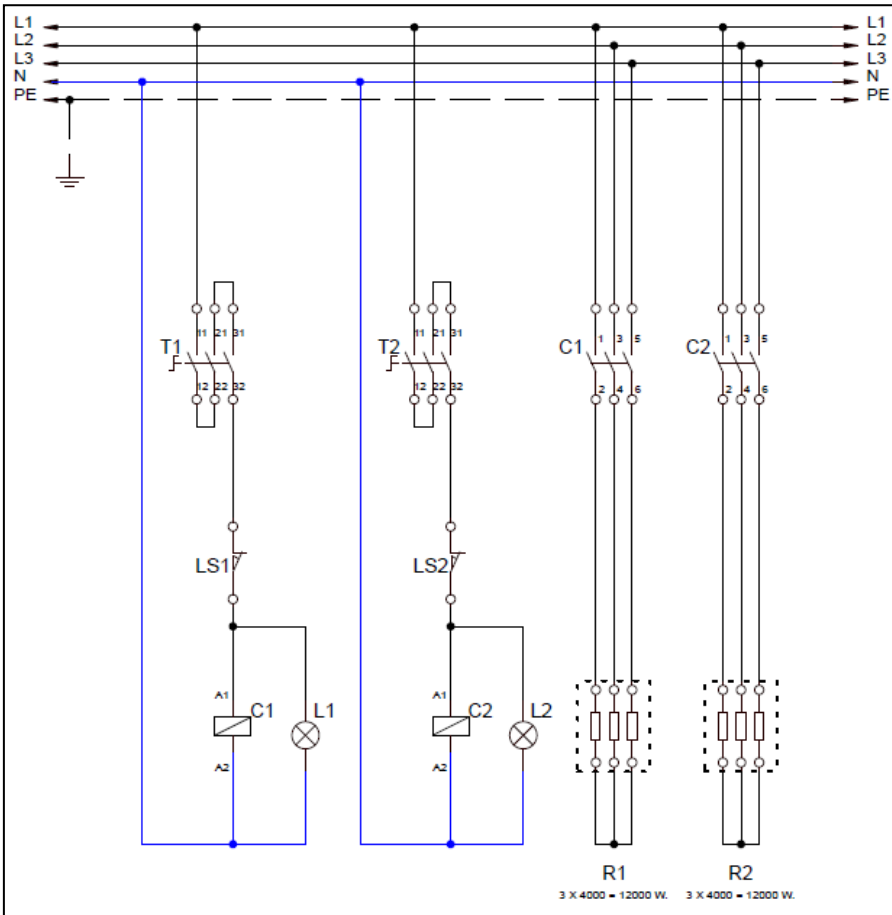
## H ELECTRIC CIRCUIT SCHEMA



EMP.PLS.9FE020

T1.T2	LS1.LS2	C1.C2	L1.L2	R1.R2
Thermostat (135-180°C)	Limit Switch	Contactor	Thermostat signal lamp	Resistance 6X6000

## H ELECTRIC CIRCUIT SCHEMA



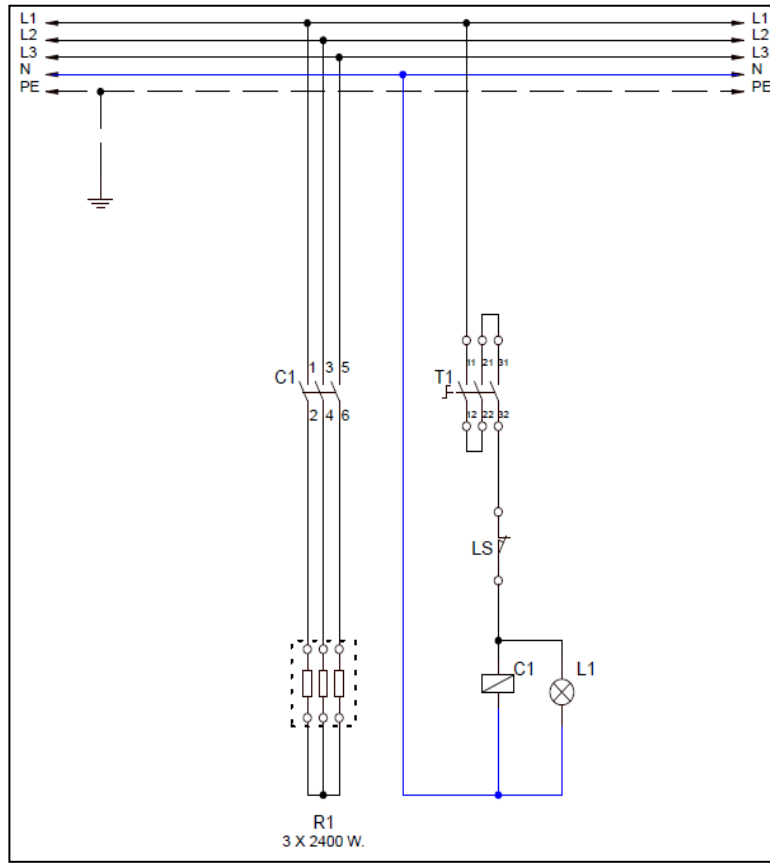
EMP.PLS.7FE020

T1.T2	LS1.LS2	C1.C2	R1.R2
Thermostat (135-180°C)	Limit Switch	Contactor	Rezistans 3X3500



# ELECTRIC FRYERS

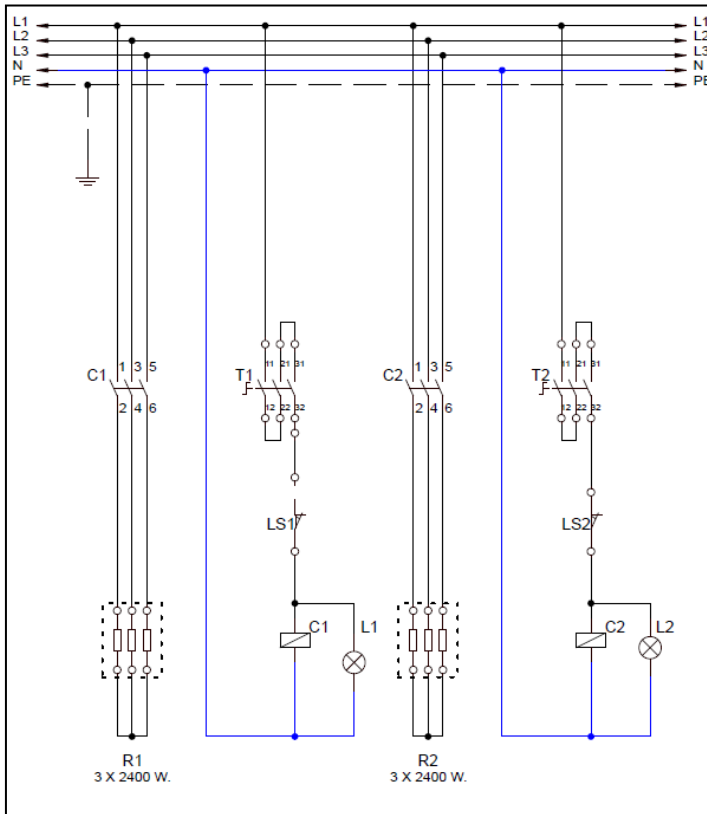
## H ELECTRIC CIRCUIT SCHEMA



EMP.6FE010

T1	LS	C1	L1	R1
Thermostat (50-180°C)	Limit switch	Contactor	Thermostat signal lamp	Resistance 3X2400

## H ELECTRIC CIRCUIT SCHEMA



EMP.6FE020

T1.T2	LS1.LS2	C1.C2	L1.L2	R1.R2
Thermostat (50-180°C)	Limit switch	Contactor	Thermostat signal lamp	Resistance 6X2400