

# PLUS GAS FRYERS

## CONTENTS

---

<b>A</b>	<b>GENERAL INFORMATION.....</b>	<b>Page 2</b>
A1	PRODUCT DESCRIPTION .....	Page 3
A2	TECHNICAL INFORMATION .....	Page 3
A3	TRANSPORTATION .....	Page 4
A4	UNPACKING .....	Page 4
<b>B</b>	<b>INSTALLATION .....</b>	<b>Page 4</b>
<b>C</b>	<b>SAFETY INSTRUCTIONS.....</b>	<b>Page 5</b>
<b>D</b>	<b>OPERATION .....</b>	<b>Page 6</b>
<b>E</b>	<b>CLEANING &amp; MAINTENANCE .....</b>	<b>Page 7</b>
<b>F</b>	<b>TROUBLESHOOTING .....</b>	<b>Page 8</b>
<b>G</b>	<b>INJECTOR CHANGE AND GAS SETTING .....</b>	<b>Page 9</b>
<b>H</b>	<b>GAS CONNECTION IMAGES .....</b>	<b>Page 10</b>
<b>I</b>	<b>SPARE PART LIST-EXPLODING DRAWING .....</b>	<b>Page 11</b>

## **A GENERAL INFORMATIONS**

---

**Before installing the appliance, read operation and maintenance instructions carefully. Wrong installation and part changing may damage the product or may cause injury on people. These are not in our company's responsibility to damage the appliance intentionally, negligence, detriments because of disobeying instructions and regulations, wrong connections. Unauthorized intervention to appliance invalidates the warranty.**

1. This instruction manual should be kept in a safe place for future reference.
- 2. Installation should be made in accordance with ordinances and security rules of that country by a qualified service personnel.**
3. This appliance has to be used by trained person.
4. Please turn off the appliance immediately in the event of malfunction or failure. The appliance should be repaired only by authorized service personnel. Please demand original spare part.

# PLUS GAS FRYERS

## A1 PRODUCT DESCRIPTION

\*The Professional Gas Fryers, that provides high efficiency has been designed to be used in industrial kitchens.

Product Code	Dimensions (mm)	Weight (kg)	Packaging Dimensions (mm)
EMP.6FG010	400x664X285	25	480x870x600
EMP.6FG020	800x664x285	32	900x850x600
EMP.PLS.7FG010	400x760x850	63	480x860x1020
EMP.PLS.7FG020	800x760x850	113	900x840x1030
EMP.PLS.9FG010	400x930x850	68	480x1000x1050
EMP.PLS.9FG020	800x930x850	118	900x1000x1050
EMP.PLS.7FG010-S	400x760x850	63	480x860x1020
EMP.PLS.7FG020-S	800x760x850	113	900x840x1030

## A2 TECHNICAL INFORMATION

Product Code	Capacity	Power NG (KW)	Gas Consumption	Power LPG (KW)	Gas Consumption
	(lt)		m <sup>3</sup> /h (NG)		kg/h (LPG)
EMP.6FG010	18	4,34	0,46 m <sup>3</sup> /h	4,96	0,39 kg/h
EMP.6FG020	18	8,67	0,92 m <sup>3</sup> /h	9,91	0,78 kg/h
EMP.PLS.7FG010	18	17,41	1,84 m <sup>3</sup> /h	11,61	0,92 kg/h
EMP.PLS.7FG020	2x18	34,82	3,68 m <sup>3</sup> /h	23,23	1,83 kg/h
EMP.PLS.9FG010	24	17,41	1,84 m <sup>3</sup> /h	11,61	0,92 kg/h
EMP.PLS.9FG020	2x24	34,82	3,68 m <sup>3</sup> /h	23,23	1,83 kg/h
EMP.PLS.7FG010-S	18	10,00	0,80 m <sup>3</sup> /h	10,00	0,80 kg/h
EMP.PLS.7FG020-S	2x18	20,00	1,60 m <sup>3</sup> /h	20,00	1,60 kg/h

---

**A3 TRANSPORTATION**

---

\* This appliance can not be moved by hand from area to area. Therefore Use a hauling truck (forklift or pallet jack) to move the appliance. ( The lifting arms of the of forklift or pallet jack must reach up to more than half part of t appliance underneath.

---

**A4 UNPACKING**

---

\* Please unpack the package according to the security codes and ordinances of current country and get rid from the pack.Parts which contacts with food are produced by stainless steel.All plastic parts are marked by material's symbol.

\*Please check that all the parts of appliance had come completely and if they are damaged or not during the shipping.

---

**B INSTALLATION**

---

\*Please place the product to straight and sturdy ground,please take necessary steps against possibility of overturn.

\*Technician who will serve for installation and service for the appliance must be professional on this subject and must have installation and service licenses by the company.

\*Connection to Gas Fitment must be done by authorized person.

\*The area where the appliance is must have enough ventilation and vent-hole.

\*The appliance must be connected correctly according to local and national gas standards of your country.

\*The appliance gas entrances are indicated with "G" label on the body.

\*Connection to gas fitment must be done with suitable diameter metal flex pipe and spheric valve.The spheric valve must be immobilized to a place that is far away from heat and accessible during the danger.After gas entrance connection done,gas leakages must be checked.













\*According to the datas on appliance information plate,gas and pressure must be adjusted.If the gas type that is adjusted is not the suitable with gas type that is at installation place,apply the instructions that is about adjustment of different gas type. (**Event :G**)

\*If the location where gas fryers placed is covered with nonflammable heat insulation material,the distance between them must be 5 cm.Otherwise it should be at least 20 cm.The appliance shouldn't be operated under chimney hood.

# PLUS GAS FRYERS

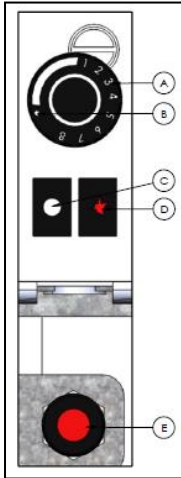
## C SAFETY INSTRUCTIONS

---

-  \* Do not use the appliance in insufficient lighted place.
-  \* Do not touch the moving attachments while the appliance operates.
-  \* Do not install the appliance in the presence of flammable or explosive materials.
-  \* Do not operate the appliance when the machine is empty.
-  \* Do not load so less or more than appliance's capacity.
-  \* Do not attempt to use the appliance without suitable protective equipments.
-  \* Because of any reason if there is a fire or flame flare where the appliance is used, turn off all gas valves and electric contactor switch quickly and use fire extinguisher. Never use water to extinguish the fire.
-  \* If there is gas leakage where the appliance is, do not fire absolutely and do not use electric..
-  \* Definitely do not allow to check the sealing with flame.
-  \* Level of oil mustn't be less than minimum level. Otherwise it can be ignited.
-  \* Level of oil mustn't be more than maximum level. Otherwise the oil that overflows from fryer may cause combustion.
-  \* Do not put the unstrained and frozen foods into the hot oil.

## D OPERATION

### \* Control Panel;



- A : Heating Value (1-8)**
- B : Lighter Position**
- C : Gas Flow Stopping Button**
- D : Gas Flow Button**
- E : Lighter**

### \* Operating;

- According to type of use, make gas entrance connection from behind the grill. Because the machine is operated with LPG and NG. Turn on the gas valves.
- Before operating the fryer, place filter and place filter into the tank.
- Before operating the fryer, Be sure that oil drainage valve is off
- Open the lid and put oil to the tank. Pay attention to both minimum and maximum lines while adding oil into the tank.
- Provide the valve of gas group to be at lighter position. Press the button and be sure that pilot group is operated.
- Adjust the appliance's heat (1-8) gradually.
- When the oil temperature reaches indicator temperature, heaters are disabled through the agency of limit thermostat. When the oil temperature is lower than indicator temperature, the limit thermostat steps in and heaters start to work. Signal lamp is on again.
- Put the materials that will be fried into the tank in the basket during oil heating and close its lid.
- After frying process, switch the thermostat to (0) position and unplug the appliance.
- Before draining the oil from fryer, leave it to be cooled.
- In order to drain the oil from fryer, connect the draining pipe to oil valve that is in cabinet and then drain the oil.

## PLUS GAS FRYERS

### **E      CLEANING & MAINTENANCE**

---

#### ➤ **CLEANING AND MAINTENANCE AFTER EVERY USE**

- Turn off the gas connection before cleaning.
- Clean the outer surface of the appliance with a wet cloth.
- Do not use abrasive cleaning chemicals as these can leave harmful residues.
- Do not wash the appliance with pressure water.
- Do not clean the appliance with a materials that may damage chrome material.
- While cleaning the inside of the fryer,take off the basket and filter that are in tank.

#### ➤ **PERIODIC CLEANING AND MAINTENANCE**

- Maintenance should be done by qualified person.
- These parts ; Gas storage,pilot,thermocouples,taps,burner,lighter and spark plug cable are not maintained so they need to be changed when they have error.
- Check the gas connection hoses in periodic time.If there is slit,hole..etc,change the hoses.
- Ventilate the area where the device is in periodic times.
- Clean the oil tank according to frequency of use.Fill the tank with water and heat. This will help to be easily cleaned of adherent and frozen fat and unloading mechanism.

## F TROUBLESHOOTING

<p><b>THE APPLIANCE DOESN'T OPERATE</b></p>	<ol style="list-style-type: none"> <li>1. Check if the gas connection is done or not.</li> <li>2. If there is no gas entrance to pilot,the appliance is not operated.</li> <li>3. Check if the injector holes are opened or not.</li> <li>4. If the hoses that have gas entrance lose gas due to slit,hole.etc.,the appliance is not operated.</li> </ol>
---	---

<p><b>THE APPLIANCE DOESN'T COOK WELL</b></p>	<ol style="list-style-type: none"> <li>1. Check if it is operated at suitable gas setting or not.</li> <li>2. Check the level of oil.</li> </ol>
---	--

<p><b>THE APPLIANCE STOPPED</b></p>	<ol style="list-style-type: none"> <li>1. Gas flow is stopped automatically when the flame is off due to having gas tap that has safety valve.In this situation the appliance is not operated.</li> <li>2. When there is gas leakage,if there is solenoid gas stopper alarm,gas flow is stopped and the appliance is not operated.Ventilate the area through the agency of vent-hole.</li> </ol>
-------------------------------------	--

- |  |
|--|
| <ul style="list-style-type: none"> <li>• If frying / cooking is not done at suitable quality</li> <li>• If any function of security doesn't work             <ul style="list-style-type: none"> <li>➤ Do not use the appliance.</li> </ul> </li> </ul> |
|--|

**\*If the problems above are still going on,contact with our authorized services.**



# PLUS GAS FRYERS

## G INJECTOR CHANGE AND GAS SETTING

### GAS FRYER BURNER – INJECTOR CHANGE CHART

NG / LPG		G20	G25	G30	G31
				30/50 mbar	30/50 mbar
EMP.6FG010	Ø mm	Ø 1,10	Ø 1,10	Ø 0,80	Ø 0,80
	X	2x	2x	2x	2x
EMP.6FG020	Ø mm	Ø 1,10	Ø 1,10	Ø 0,80	Ø 0,80
	X	4x	4x	4x	4x
EMP.PLS.7FG010	Ø mm	Ø 1,80	Ø 1,80	Ø 1,00	Ø 1,00
	X	3x	3x	3x	3x
EMP.PLS.7FG020	Ø mm	Ø 1,80	Ø 1,80	Ø 1,00	Ø 1,00
	X	6x	6x	6x	6x
EMP.PLS.9FG010	Ø mm	Ø 1,80	Ø 1,80	Ø 1,00	Ø 1,00
	X	3x	3x	3x	3x
EMP.PLS.9FG020	Ø mm	Ø 1,80	Ø 1,80	Ø 1,00	Ø 1,00
	X	6x	6x	6x	6x
EMP.PLS.7FG010-S	Ø mm	Ø 1,10	Ø 1,10	Ø 0,80	Ø 0,80
	X	2x	2x	2x	2x
EMP.PLS.7FG020-S	Ø mm	Ø 1,10	Ø 1,10	Ø 0,80	Ø 0,80
	X	4x	4x	4x	4x

#### Change of Burner Injector;

1. Rip off the injector at the entrance of burner with a suitable tool.
2. Change A injector by paying attention to the datas at chart with suitable injector. (Image 1)
3. Adjust the burner entrance setting (F) by loosening 'B' bolt and moving the valve to forward-back. (Image 2)
4. Change C injector by paying attention to the datas at chart with suitable injector. For this it is enough to take off 'D' fitting and pull the gas pipe to down. (Image 3)

H GAS CONNECTION IMAGES

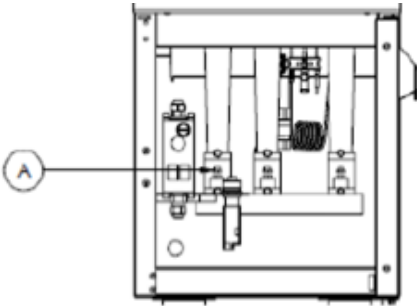


Image 1

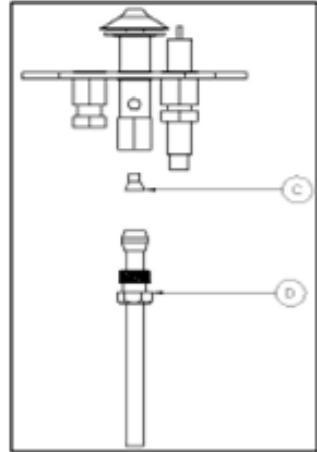


Image 3

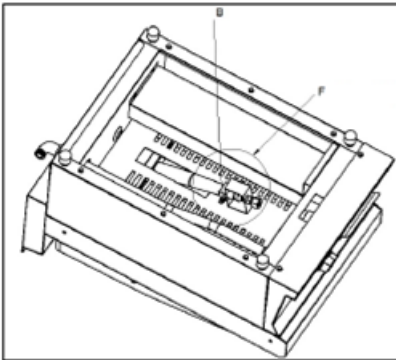
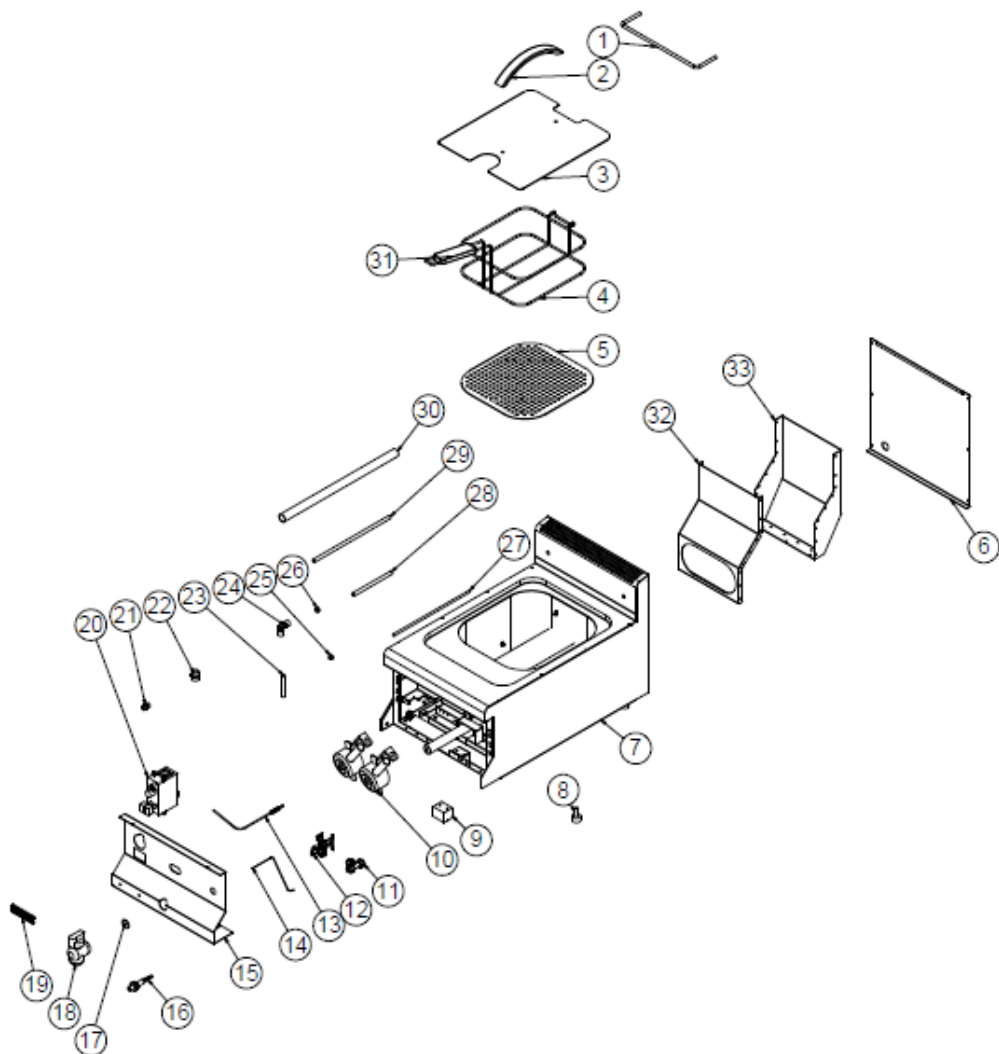


Image 2

# PLUS GAS FRYERS

## I SPARE PART LIST-EXPLODING DRAWING



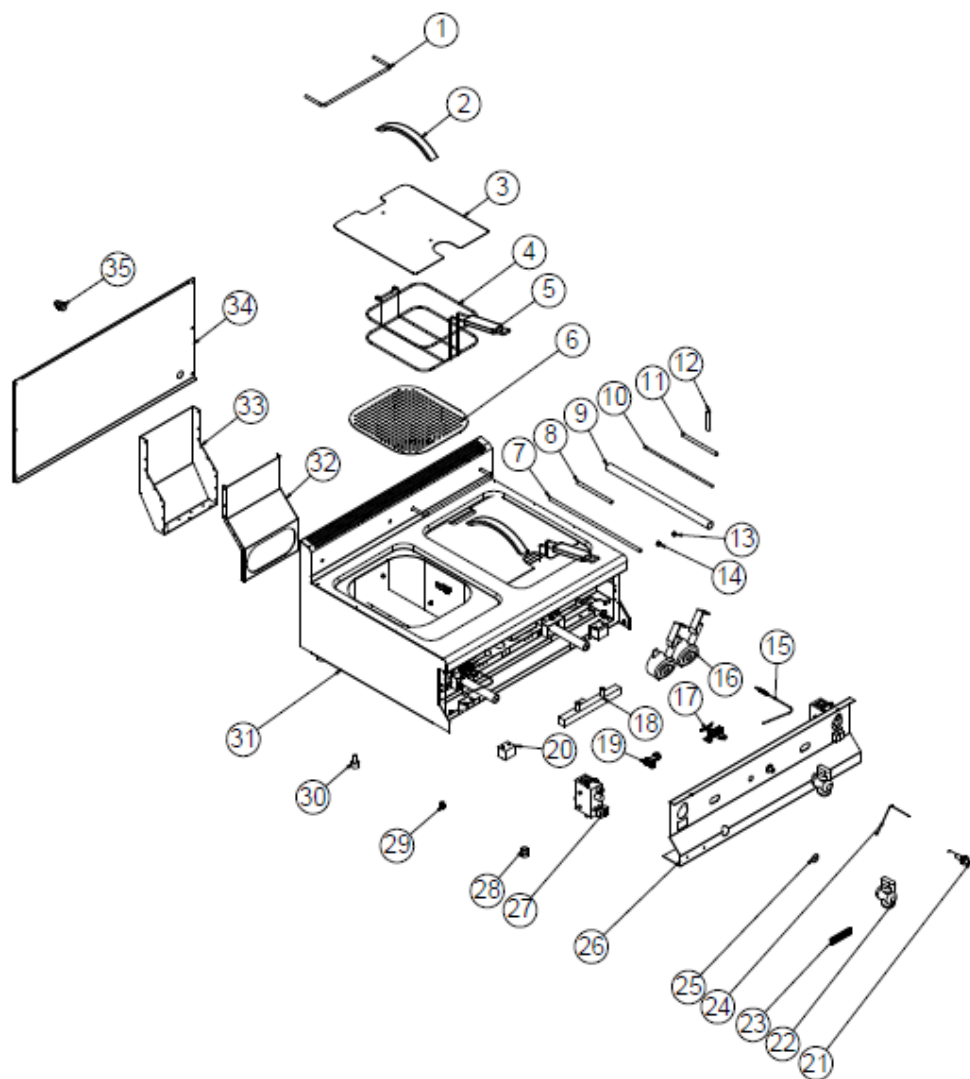
EMP.6FG010

## I SPARE PART LIST-EXPLODING DRAWING

PRODUCT CODE: EMP.6FG010		
NO	PRODUCT NAME	P.CODE
1	HANGER SHAFT	YTL-KNX.SNC-KS-0016
2	243MM LONG HANDLE	M.AKS-KLP-LUX-003
3	HOPPER LID SHEET	YSC-KNX.SNC-LZ-0236
4	28*26*10.5 CM BASKET	M.AKS-SPT-INX-038
5	BASKET BOTTOM SHEET	YSC-KNX.PG7-PN-0654
6	REAR SHEET	YSC-KNX.SNC-PN-0143
7	CHASSIS	-
8	M10*35 FOOT	JP.M.AKS-AYK-PLS-002
9	230 °C LIMITOR	JP.M.ELK-MEK-LMT-005
10	BURNER	M.GAZ-BRL-BEK-019
11	T PIPE 3/8-3/8-3/8 (M16*1.5) 301021326	M.GAZ-TES-SRI-004
12	Y TYPE PILOT 0,40 INJECTOR	M.GAZ-PLT-PLC-007
13	THERMO ELEMENT	M.GAZ-TRL-006
14	CABLE 500MM	M.GAZ-CKM-KBL-004
15	FRONT PANEL	YSC-KNX.SNC-LZ-0234
16	PIOZE LIGHTER Ø:18	M.GAZ-CKM-PIEZ-001
17	GASKET	M.CNT-PLS-KLN-002
18	3/4 VALVE	JP.M.MEK-TES-MSL-005
19	TICKET	JP.M.AKS-OZL-MTL-001
20	110-190 GAS BLOCK AND BUTTON	M.GAZ-BLK-SIT-001
21	CONNECTION	M.MEK-TES-GLV-006
22	CONNECTION 1/2	JP.M.MEK-TES-SRI-014
23	FLEXIABLE GAS PIPEØ 10 MM 7 CM 3/8	M.GAZ-TES-SPR-027
24	3/8 16*1.5 M.8 0.75 L SHAPED PIPE	M.GAZ-TES-SRI-023
25	INJECTOR M8*0.75 Ø 0.80 MM	M.GAZ-ENJ-LPG-017
26	INJECTOR M8*0.75 Ø1.10 MM	M.GAZ-ENJ-NG-013
27	FLEXIABLE GAS PIPE30 CM Ø6 MM	M.GAZ-TES-SPR-032
28	FLEXIABLE GAS PIPEØ10 MM 15 CM 3/8	M.GAZ-TES-SPR-028
29	FLEXIABLE GAS PIPEØ10 MM 30 CM 3/8	M.GAZ-TES-SPR-020
30	1/2-1/2 60 CM GAS FLEX PIPE	M.GAZ-TES-SPR-006
31	16CM HANDLE	M.AKS-KLP-BKL-007
32	CHIMNEY FRONT SHEET	YSC-KNX.SNC-PN-0146
33	CHIMNEY BACK SHEET	YSC-KNX.SNC-PN-0145

# PLUS GAS FRYERS

## I SPARE PART LIST-EXPLODING DRAWING



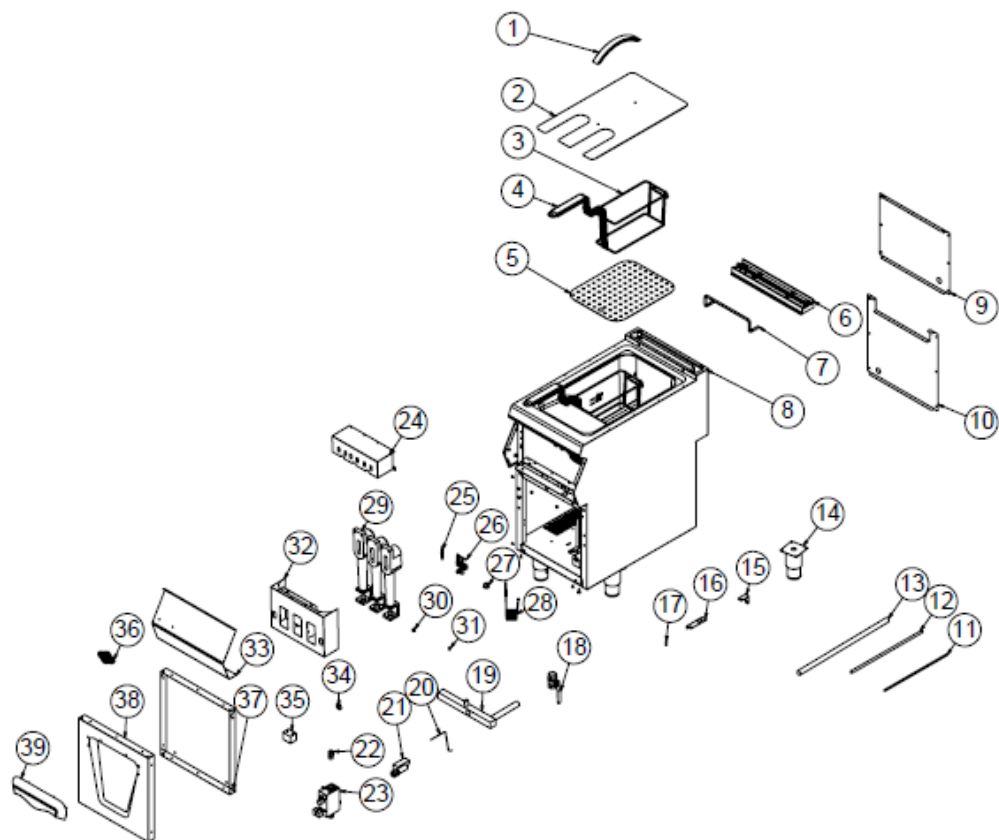
EMP.6FG020

## I SPARE PART LIST-EXPLODING DRAWING

PRODUCT CODE : EMP.6FG020		
NO	PRODUCT NAME	P.CODE
1	HANGER SHAFT	YTL-KNX.SNC-KS-0016
2	243MM LONG HANDLE	M.AKS-KLP-LUX-003
3	HOPPER LID SHEET	YSC-KNX.SNC-LZ-0236
4	28*26*10.5 CM BASKET	M.AKS-SPT-INX-038
5	16CM HANDLE	M.AKS-KLP-BKL-007
6	BASKET BOTTOM SHEET	YSC-KNX.PG7-PN-0654
7	FLEXIABLE GAS PIPEØ10 MM 40 CM 3/8	M.GAZ-TES-SPR-014
8	FLEXIABLE GAS PIPEØ10 MM 15 CM 3/8	M.GAZ-TES-SPR-028
9	1/2-1/2 50 CM GAS FLEX PIPE	M.GAZ-TES-SPR-002
10	FLEXIABLE GAS PIPE30 CM Ø6 MM	M.GAZ-TES-SPR-032
11	FLEXIABLE GAS PIPEØ10 MM 30 CM 3/8	M.GAZ-TES-SPR-020
12	FLEXIABLE GAS PIPEØ 10 MM 7 CM 3/8	M.GAZ-TES-SPR-027
13	INJECTOR M8*0.75 Ø 0.80 MM	M.GAZ-ENJ-LPG-017
14	INJECTOR M8*0.75 Ø1.10 MM	M.GAZ-ENJ-NG-013
15	THERMO ELEMENT	M.GAZ-TRL-006
16	BURNER	M.GAZ-BRL-BEK-019
17	Y TYPE PILOT 0,40 INJECTOR	M.GAZ-PLT-PLC-007
18	GAS TANK	M.GAZ-DPO-PG-078
19	T PIPE 3/8-3/8-3/8 (M16*1.5) 301021326	M.GAZ-TES-SRI-004
20	230 °C LIMITOR	JP.M.ELK-MEK-LMT-005
21	PIOZE LIGHTER Ø:18	M.GAZ-CKM-PIEZ-001
22	3/4 VALVE	JP.M.MEK-TES-MSL-005
23	TICKET	JP.M.AKS-OZL-MTL-001
24	CABLE 500MM	M.GAZ-CKM-KBL-004
25	GASKET	M.CNT-PLS-KLN-002
26	FRONT PANEL	YSC-KNX.SNC-LZ-0241
27	110-190 GAS BLOCK AND BUTTON	M.GAZ-BLK-SIT-001
28	CONNECTION 1/2	JP.M.MEK-TES-SRI-014
29	CONNECTION	M.MEK-TES-GLV-006
30	M10*35 FOOT	JP.M.AKS-AYK-PLS-002
31	CHASSIS	-
32	CHIMNEY FRONT SHEET	YSC-KNX.SNC-PN-0146
33	CHIMNEY BACK SHEET	YSC-KNX.SNC-PN-0145
34	REAR SHEET	YSC-KNX.SNC-PN-0149
35	GAS BLOCK INLET FITTING	YTL-KNX.GPZ-KS-0001

# PLUS GAS FRYERS

## I SPARE PART LIST-EXPLODING DRAWING



EMP.PLS.7FG010

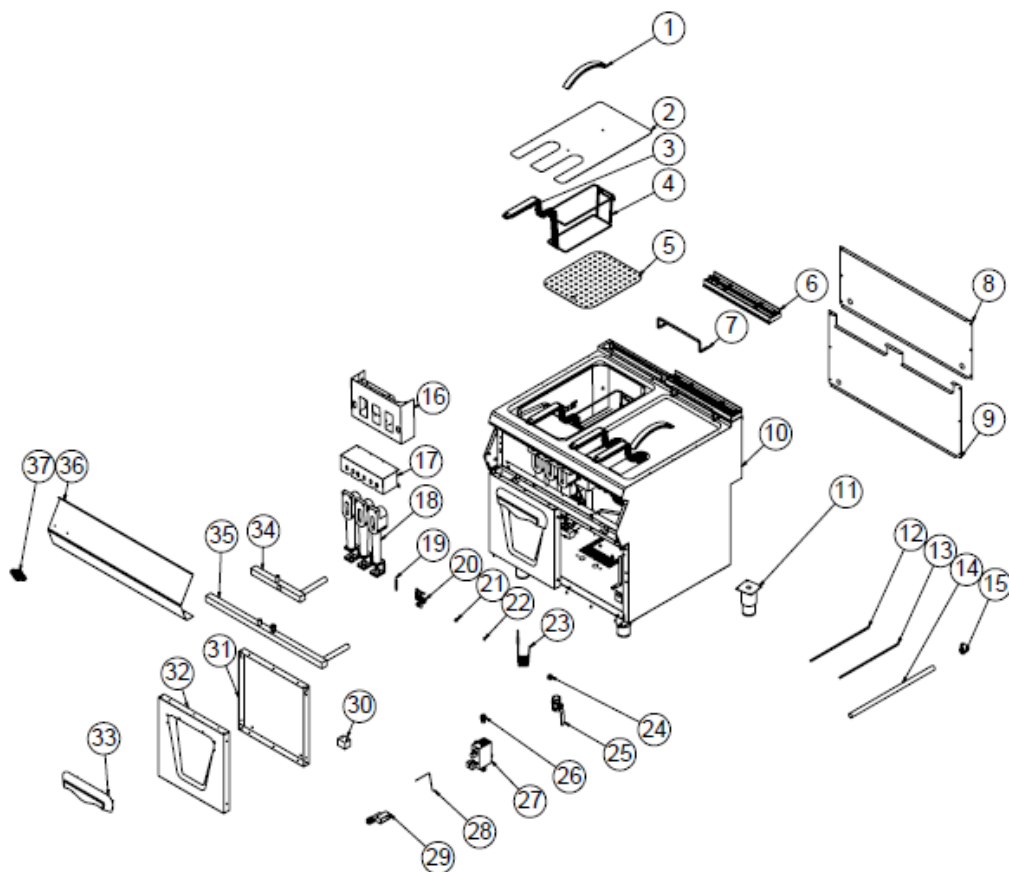
## I SPARE PART LIST-EXPLODING DRAWING

PRODUCT CODE: EMP.PLS.7FG010		
NO	PRODUCT NAME	P.CODE
1	243MM LONG HANDLE	M.AKS-KLP-LUX-003
2	TOP COVER SHEET	YSC-KNX.PG7-LZ-0553
3	30.5*13*15.5CM BASKET	M.AKS-SPT-INX-035
4	16CM HANDLE	M.AKS-KLP-BKL-007
5	BASKET BOTTOM SHEET	YSC-KNX.PG7-PN-0653
6	40 CM X 7 CM CHIMNEY	JP.M.AKS-DKM-KZN-013
7	BASKET SHAFT Ø 8 365 MM	YTL-KNX.PG9-KS-0002
8	CHASSIS	-
9	BACK COVER SHEET	JP.YSC-KNX.PG7-PN-0391
10	CABINET REAR SHEET	YSC-KNX.PG7-LZ-1119
11	GAS FLEX Ø10 MM 50 CM 3/8	M.GAZ-TES-SPR-017
12	FLEXIABLE GAS PIPEØ 6 MM 35 CM	M.GAZ-TES-SPR-024
13	1/2-1/2 40 CM GAS FLEX	M.GAZ-TES-SPR-003
14	15 CM LEG	M.AKS-AYK-INX-001
15	HINGE SHEET	YSC-KNX.PG7-LZ-0342
16	HINGE SHEET	YSC-KNX.PG7-LZ-0030
17	DOOR PIN	YTL-KNX.PG7-KS-0015
18	VALVE	M.MEK-TES-KVN-002
19	ANGELED PIPE	M.GAZ-DPO-PG-015
20	CABLE 500MM	M.GAZ-CKM-KBL-004
21	BATTERY LIGHTER	M.GAZ-CKM-PIL-001
22	CONNECTION	M.MEK-TES-GLV-006
23	110-190 GAS BLOCK AND BUTTON	M.GAZ-BLK-SIT-001
24	BURNER CONNECTING SHEET	YSC-KNX.PG7-PN-0015
25	M4 Spark Plug	M.GAZ-CKM-KBJI-003
26	PILOT GROUP LPL-1028	M.GAZ-PLT-PLC-001
27	Ø 22*7 MM MAGNET	M.MIK-PG-001
28	THERMO ELEMENT	M.GAZ-TRL-006
29	BURNER	M.GAZ-BRL-DKM-001
30	INJECTOR M6*0.75 Ø1.00 MM.	M.GAZ-ENJ-LPG-004
31	INJECTOR M6*0.75 Ø1.80 MM	M.GAZ-ENJ-PG-005
32	SHEET OF HELL	YSC-KNX.PG7-PN-0014
33	FRONT PANEL	JP.YSC-KNX.PG7-LZ-0665
34	GASKET	M.CNT-PLS-KLN-002
35	230 °C LIMITOR	JP.M.ELK-MEK-LMT-005
36	TICKET	M.AKS-OZL-MTL-006
37	COVER INTERNAL SHEET	YSC-KNX.PG7-PN-0456
38	COVER OUTER SHEET	YSC-KNX.PG7-LZ-0488
39	HANDLE	M.AKS-KLP-LUX-004



# PLUS GAS FRYERS

## I SPARE PART LIST-EXPLODING DRAWING



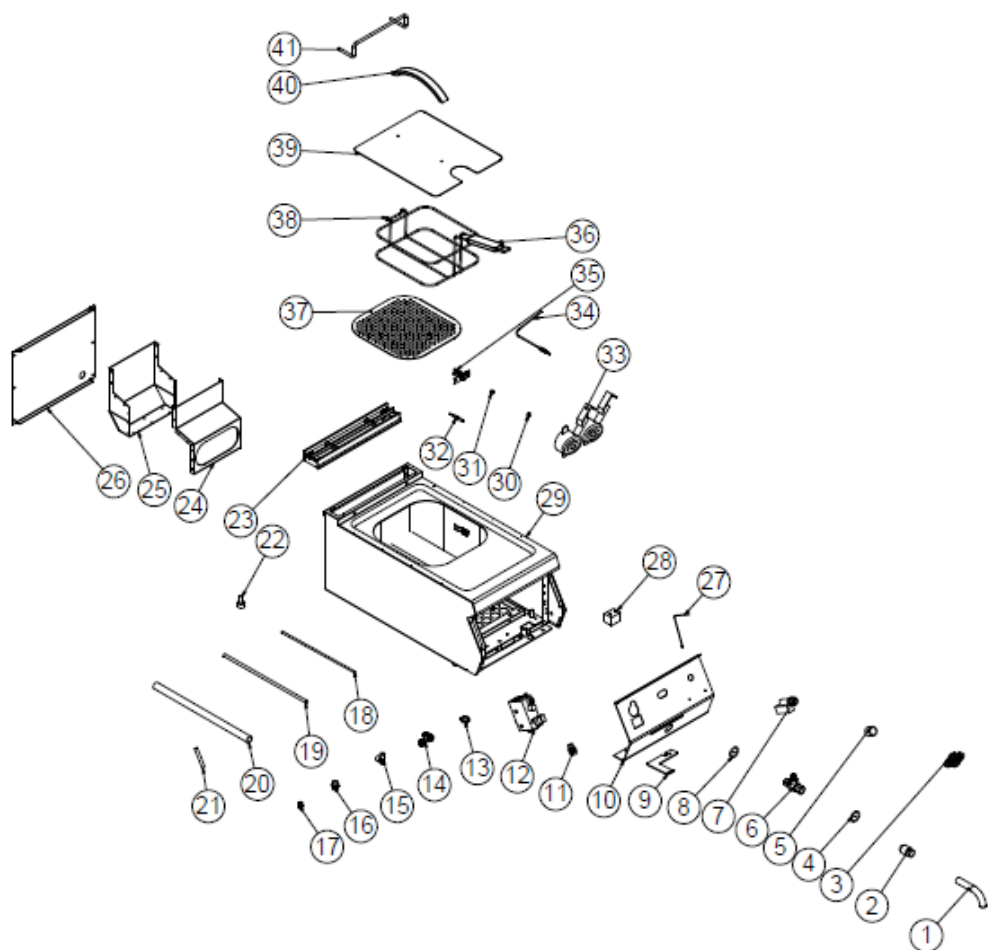
EMP.PLS.7FG020

## I SPARE PART LIST-EXPLODING DRAWING

PRODUCT CODE: EMP.PLS.7FG020		
NO	PRODUCT NAME	P.CODE
1	243MM LONG HANDLE	M.AKS-KLP-LUX-003
2	TOP COVER SHEET	YSC-KNX.PG7-LZ-0553
3	16CM HANDLE	M.AKS-KLP-BKL-007
4	30.5*13*15.5CM BASKET	M.AKS-SPT-INX-035
5	BASKET BOTTOM SHEET	YSC-KNX.PG7-PN-0653
6	40 CM X 7 CM CHIMNEY	JP.M.AKS-DKM-KZN-013
7	BASKET SHAFT Ø 8 365 MM	YTL-KNX.PG9-KS-0002
8	BACK SHEET METAL	YSC-KNX.PG7-PN-0398
9	CABINET REAR SHEET	YSC-KNX.PG7-LZ-1120
10	CHASSIS	-
11	15 CM LEG	M.AKS-AYK-INX-001
12	GAS FLEX Ø10 MM 50 CM 3/8	M.GAZ-TES-SPR-017
13	FLEXIABLE GAS PIPEØ 6 MM 35 CM	M.GAZ-TES-SPR-024
14	1/2-1/2 40 CM GAS FLEX	M.GAZ-TES-SPR-003
15	BRACKET	JP.M.GAZ-TES-GLV-002
16	SHEET OF HELL	YSC-KNX.PG7-PN-0014
17	BURNER CONNECTING SHEET	YSC-KNX.PG7-PN-0015
18	BURNER	M.GAZ-BRL-DKM-001
19	M4 Spark Plug	M.GAZ-CKM-KBJI-003
20	PILOT GROUP LPL-1028	M.GAZ-PLT-PLC-001
21	INJECTOR M6*0.75 Ø1.00 MM.	M.GAZ-ENJ-LPG-004
22	INJECTOR M6*0.75 Ø1.80 MM	M.GAZ-ENJ-NG-005
23	THERMO ELEMENT	M.GAZ-TRL-006
24	Ø 22*7 MM MAGNET	M.MIK-PG-001
25	VALVE	M.MEK-TES-KVN-002
26	CONNECTION	M.MEK-TES-GLV-006
27	110-190 GAS BLOCK AND BUTTON	M.GAZ-BLK-SIT-001
28	CABLE 500MM	M.GAZ-CKM-KBL-004
29	BATTERY LIGHTER	M.GAZ-CKM-PIL-001
30	230 °C LIMITOR	JP.M.ELK-MEK-LMT-005
31	COVER INTERNAL SHEET	YSC-KNX.PG7-PN-0456
32	COVER OUTER SHEET	YSC-KNX.PG7-LZ-0488
33	HANDLE	M.AKS-KLP-LUX-004
34	ANGELED PIPE	M.GAZ-DPO-PG-015
35	GAS TANK	M.GAZ-DPO-PG-075
36	FRONT PANEL	YSC-KNX.PG7-LZ-0666
37	TICKET	M.AKS-OZL-MTL-006

# PLUS GAS FRYERS

## I SPARE PART LIST-EXPLODING DRAWING



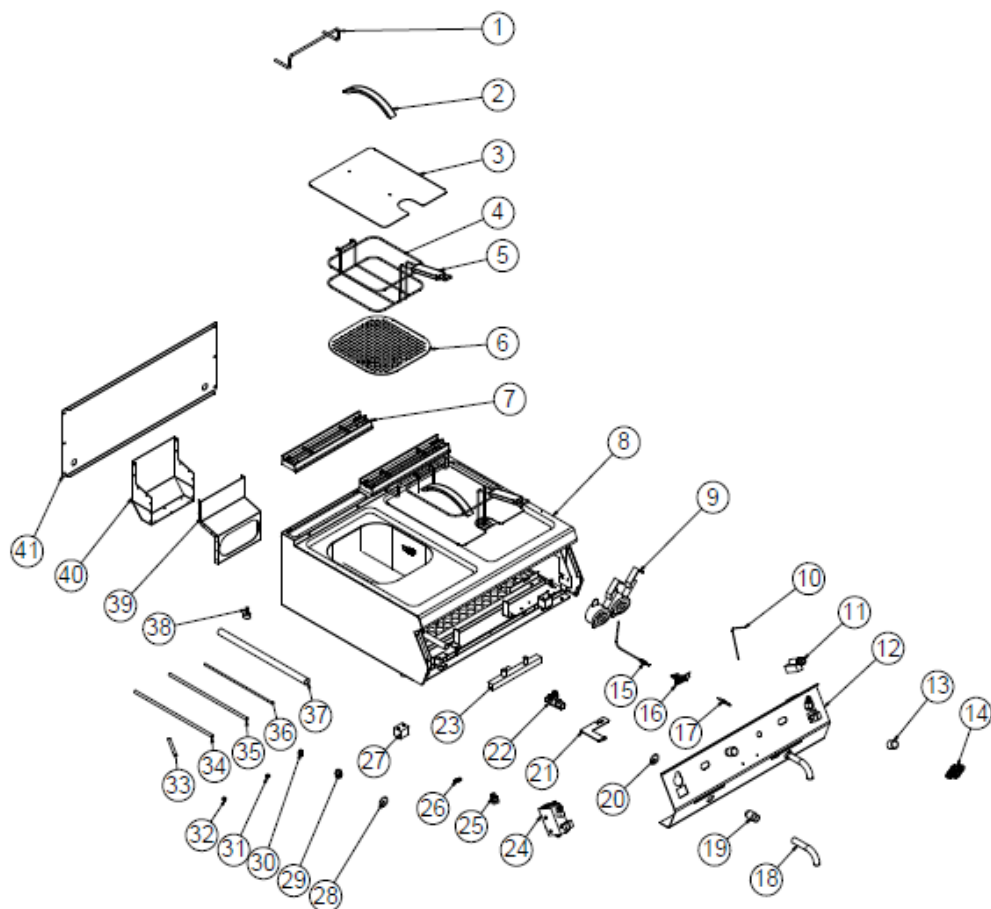
EMP.PLS.7FG010-S

## I SPARE PART LIST-EXPLODING DRAWING

PRODUCT CODE: EMP.PLS.7FG010-S		
NO	PRODUCT NAME	P.CODE
1	DRAIN PIPE	YBR-KNX.SNC-KS-0010
2	DRAIN BUSH Ø30 MM	YTL-KNX.SNC-KS-0009
3	TICKET	M.AKS-OZL-MTL-006
4	ORING 3,5 * Ø 21	M.CNT-ORG-NP4-20-001
5	LIGHTER GUARD	M.GAZ--PIEZ-KRM
6	VALVE 1/2 75 MM	M.MEK-TES-INV-001
7	BATTERY LIGHTER	M.GAZ-CKM-PIL-001
8	GASKET	M.CNT-PLS-KLN-002
9	VALVE ARM	YSC-KNX.PG7-LZ-1043
10	FRONT PANEL	YSC-KNX.PG7-LZ-1007
11	GAS BLOCK INLET FITTING	YTL-KNX.GPZ-KS-0001
12	110-190 GAS BLOCK AND BUTTON	M.GAZ-BLK-SIT-001
13	NUT	M.TRN-KNX-PG7-004
14	T PIPE 3/8-3/8-3/8 (M16*1.5) 301021326	M.GAZ-TES-SRI-004
15	ELBOW 16*1.5/1/4 M8*075	M.GAZ-TES-SRI-043
16	CONNECTION 1/2	JP.M.MEK-TES-SRI-014
17	CONNECTION	M.MEK-TES-GLV-006
18	FLEXIABLE GAS PIPEØ10 MM 15 CM 3/8	M.GAZ-TES-SPR-028
19	GAS FLEX Ø10 MM 20 CM 3/8	M.GAZ-TES-SPR-013
20	FLEXIABLE GAS PIPEØ 6 MM 35 CM	M.GAZ-TES-SPR-024
21	FLEXIABLE GAS PIPEØ 10 MM 7 CM 3/8	M.GAZ-TES-SPR-027
22	M10*35 FOOT	JP.M.AKS-AYK-PLS-002
23	40 CM X 7 CM CHIMNEY	JP.M.AKS-DKM-KZN-013
24	CHIMNEY SHEET	YSC-KNX.PG7-LZ-0686
25	CHIMNEY SHEET	YSC-KNX.PG7-LZ-0685
26	BACK COVER SHEET	JP.YSC-KNX.PG7-PN-0391
27	CABLE 500MM	M.GAZ-CKM-KBL-004
28	230 °C LIMITOR	JP.M.ELK-MEK-LMT-005
29	CHASSIS	-
30	INJECTOR M8*0.75 Ø 0.80 MM	M.GAZ-ENJ-LPG-017
31	INJECTOR M8*0.75 Ø1.10 MM	M.GAZ-ENJ-NG-013
32	CERAMIC SPARK PLUG	M.GAZ-PLT-PLC-008
33	BURNER	M.GAZ-BRL-BEK-019
34	THERMO ELEMENT	M.GAZ-TRL-006
35	Y TYPE PILOT 0,40 INJECTOR	M.GAZ-PLT-PLC-007
36	16CM HANDLE	M.AKS-KLP-BKL-007
37	BASKET BOTTOM SHEET	YSC-KNX.PG7-PN-0654
38	28*26*10.5 CM BASKET	M.AKS-SPT-INX-038
39	HOPPER LID SHEET	YSC-KNX.SNC-LZ-0236
40	243MM LONG HANDLE	M.AKS-KLP-LUX-003
41	BASKET SHAFT	YTL-KNX.PG7-KS-0029

# PLUS GAS FRYERS

## I SPARE PART LIST-EXPLODING DRAWING



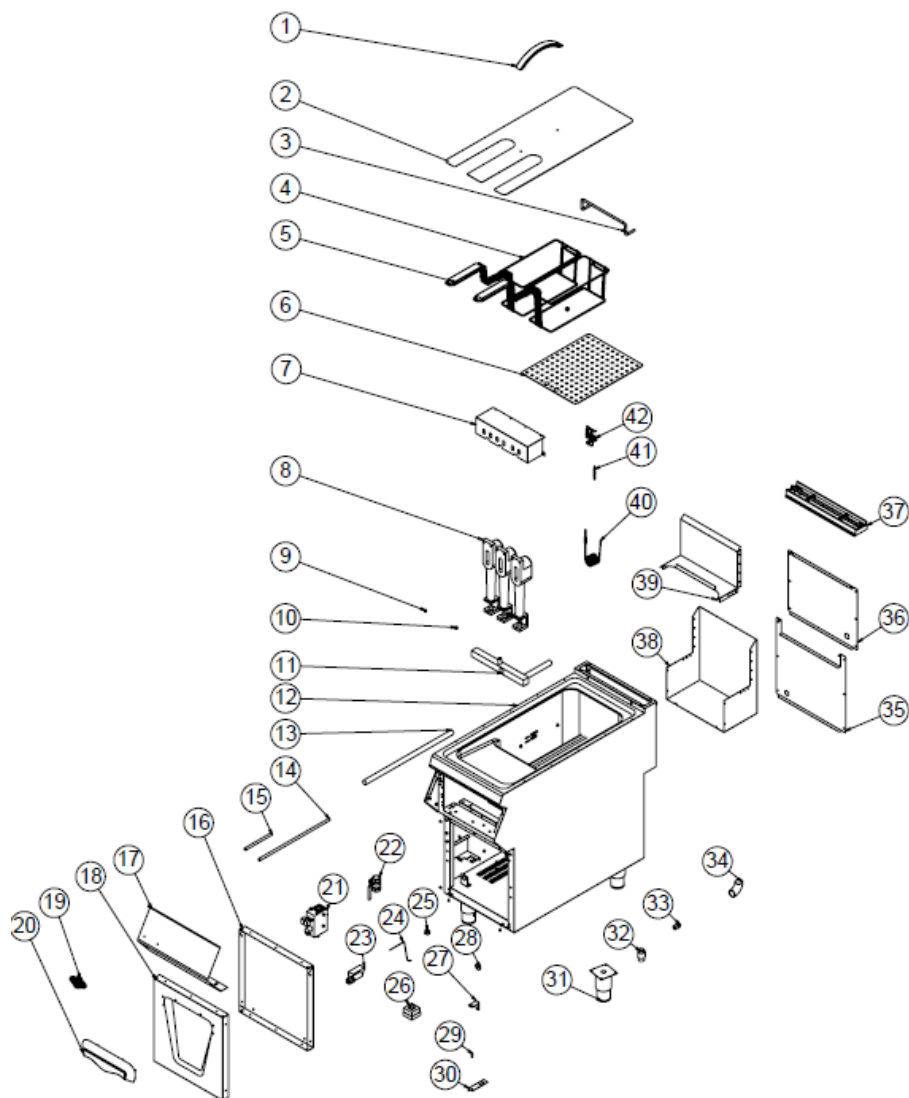
EMP.PLS.7FG020-S

## I SPARE PART LIST-EXPLODING DRAWING

PRODUCT CODE: EMP.PLS.7FG020-S		
NO	PRODUCT NAME	P.CODE
1	BASKET SHAFT	YTL-KNX.PG7-KS-0029
2	243MM LONG HANDLE	M.AKS-KLP-LUX-003
3	HOPPER LID SHEET	YSC-KNX.SNC-LZ-0236
4	28*26*10.5 CM BASKET	M.AKS-SPT-INX-038
5	16CM HANDLE	M.AKS-KLP-BKL-007
6	BASKET BOTTOM SHEET	YSC-KNX.PG7-PN-0654
7	40 CM X 7 CM CHIMNEY	JP.M.AKS-DKM-KZN-013
8	CHASSIS	-
9	BURNER	M.GAZ-BRL-BEK-019
10	CABLE 500MM	M.GAZ-CKM-KBL-004
11	BATTERY LIGHTER	M.GAZ-CKM-PIL-001
12	FRONT PANEL	YSC-KNX.PG7-LZ-1010
13	LIGHTER GUARD	M.GAZ--PIEZ-KRM
14	TICKET	M.AKS-OZL-MTL-006
15	THERMO ELEMENT	M.GAZ-TRL-006
16	Y TYPE PILOT 0,40 INJECTOR	M.GAZ-PLT-PLC-007
17	CERAMIC SPARK PLUG	M.GAZ-PLT-PLC-008
18	DRAIN PIPE	YBR-KNX.SNC-KS-0010
19	DRAIN BUSH Ø30 MM	YTL-KNX.SNC-KS-0009
20	ORING 3,5 * Ø 21	M.CNT-ORG-NP4-20-001
21	VALVE ARM	YSC-KNX.PG7-LZ-1043
22	VALVE 1/2 75 MM	M.MEK-TES-INV-001
23	GAS TANK	M.GAZ-DPO-PG-078
24	110-190 GAS BLOCK AND BUTTON	M.GAZ-BLK-SIT-001
25	GAS BLOCK INLET FITTING	YTL-KNX.GPZ-KS-0001
26	NUT	M.TRN-KNX-PG7-004
27	230 °C LIMITOR	JP.M.ELK-MEK-LMT-005
28	GASKET	M.CNT-PLS-KLN-002
29	CONNECTION 1/2	JP.M.MEK-TES-SRI-014
30	CONNECTION	M.MEK-TES-GLV-006
31	INJECTOR M8*0.75 Ø 0.80 MM	M.GAZ-ENJ-LPG-017
32	INJECTOR M8*0.75 Ø1.10 MM	M.GAZ-ENJ-NG-013
33	FLEXIABLE GAS PIPEØ 10 MM 7 CM 3/8	M.GAZ-TES-SPR-027
34	GAS FLEX Ø10 MM 50 CM 3/8	M.GAZ-TES-SPR-017
35	FLEXIABLE GAS PIPEØ 6 MM 35 CM	M.GAZ-TES-SPR-024
36	FLEXIABLE GAS PIPEØ10 MM 30 CM 3/8	M.GAZ-TES-SPR-020
37	1/2-1/2 60 CM GAS FLEX PIPE	M.GAZ-TES-SPR-006
38	M10*35 FOOT	JP.M.AKS-AYK-PLS-002
39	CHIMNEY SHEET	YSC-KNX.PG7-LZ-0686
40	CHIMNEY SHEET	YSC-KNX.PG7-LZ-0685
41	BACK SHEET METAL	YSC-KNX.PG7-PN-0398

# PLUS GAS FRYERS

## I SPARE PART LIST-EXPLODING DRAWING



EMP.PLS.9FG010

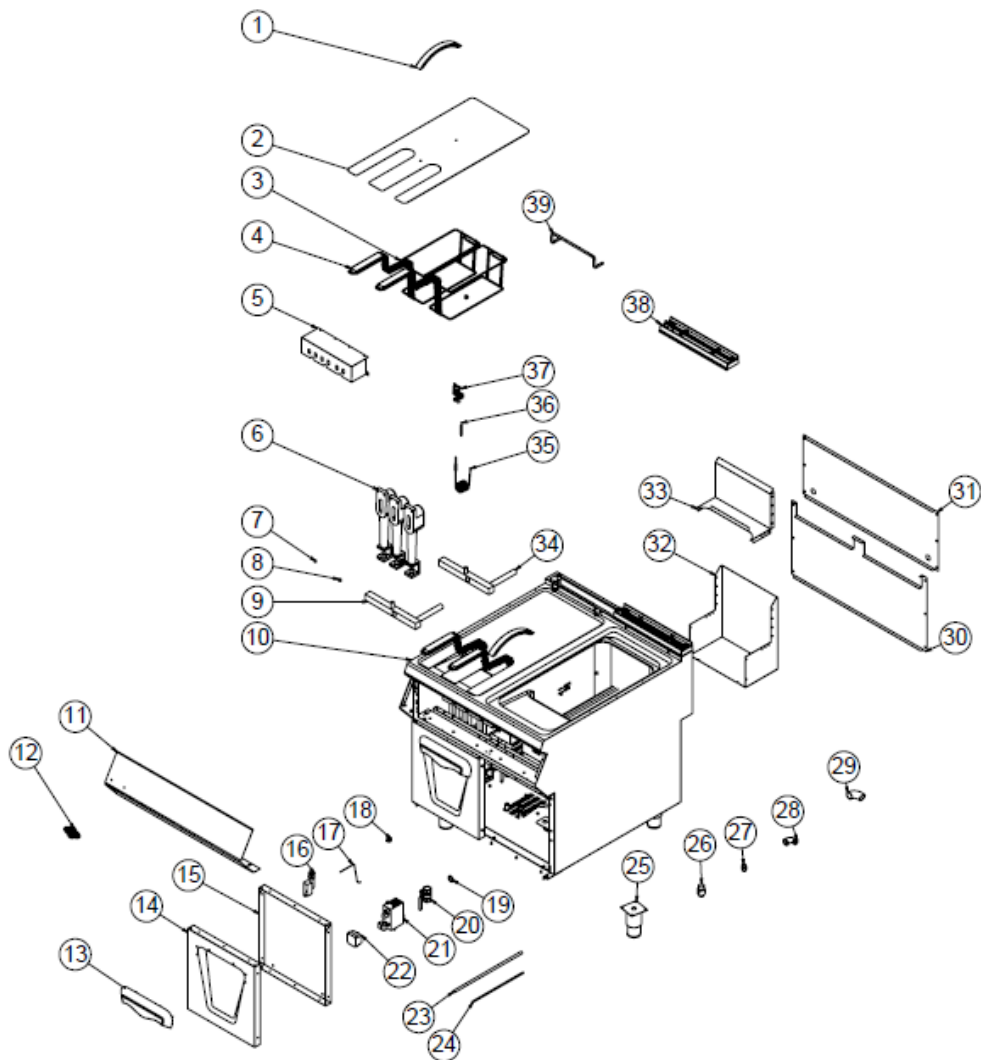
## I SPARE PART LIST-EXPLODING DRAWING

PRODUCT CODE: EMP.PLS.9FG010		
NO	PRODUCT NAME	P.CODE
1	243MM LONG HANDLE	M.AKS-KLP-LUX-003
2	TOP COVER SHEET	YSC-KNX.PG9-LZ-0073
3	BASKET SHAFT Ø 8 365 MM	YTL-KNX.PG9-KS-0002
4	BASKET	M.AKS-SPT-INX-005
5	16CM HANDLE	M.AKS-KLP-BKL-007
6	BASKET BOTTOM SHEET	YSC-KNX.PG9-PN-0563
7	BURNER CONNECTING SHEET	YSC-KNX.PG9-PN-0645
8	BURNER	M.GAZ-BRL-DKM-001
9	INJECTOR M6*0.75 Ø1.00 MM.	M.GAZ-ENJ-LPG-004
10	INJECTOR M6*0.75 Ø1.80 MM	M.GAZ-ENJ-NG-005
11	ANGELED PIPE	M.GAZ-DPO-PG-015
12	CHASSIS	-
13	1/2-1/2 40 CM GAS FLEX	M.GAZ-TES-SPR-003
14	GAS FLEX Ø10 MM 50 CM 3/8	M.GAZ-TES-SPR-017
15	GAS FLEX Ø 6 MM 25 CM	M.GAZ-TES-SPR-023
16	COVER INTERNAL SHEET	YSC-KNX.PG7-PN-0456
17	FRONT PANEL	YSC-KNX.PG9-LZ-0749
18	COVER OUTER SHEET	YSC-KNX.PG7-LZ-0488
19	TICKET	M.AKS-OZL-MTL-006
20	HANDLE	M.AKS-KLP-LUX-004
21	110-190 GAS BLOCK AND BUTTON	M.GAZ-BLK-SIT-001
22	VALVE	M.MEK-TES-KVN-002
23	BATTERY LIGHTER	M.GAZ-CKM-PIL-001
24	CABLE 500MM	M.GAZ-CKM-KBL-004
25	Ø 22*7 MM MAGNET	M.MIK-PG-001
26	230 °C LIMITOR	JP.M.ELK-MEK-LMT-005
27	HINGE SHEET	YSC-KNX.PG7-LZ-0342
28	GASKET	M.CNT-PLS-KLN-002
29	DOOR PIN	YTL-KNX.PG7-KS-0015
30	HINGE SHEET	YSC-KNX.PG7-LZ-0030
31	15 CM LEG	M.AKS-AYK-INX-001
32	RELEASE BUSH	YTL-KNX.PG7-KS-0022
33	CONNECTION	M.MEK-TES-GLV-006
34	26.9*2.00 MM ELBOW	M.MEK-TES-INX-018
35	CABINET REAR SHEET	YSC-KNX.PG9-PN-0529
36	BACK COVER SHEET	JP.YSC-KNX.PG7-PN-0391
37	40 CM X 7 CM CHIMNEY	JP.M.AKS-DKM-KZN-013
38	CHIMNEY BACK SHEET	YSC-KNX.PG9-PN-0647
39	CHIMNEY FRONT SHEET	YSC-KNX.PG9-PN-0648
40	THERMO ELEMENT	M.GAZ-TRL-006
41	M4 Spark Plug	M.GAZ-CKM-KBJI-003
42	PILOT GROUP LPL-1028	M.GAZ-PLT-PLC-001



# PLUS GAS FRYERS

## I SPARE PART LIST-EXPLODING DRAWING



EMP.PLS.9FG020

## I SPARE PART LIST-EXPLODING DRAWING

PRODUCT CODE : EMP.PLS.9FG020		
NO	PRODUCT NAME	P.CODE
1	243MM LONG HANDLE	M.AKS-KLP-LUX-003
2	TOP COVER SHEET	YSC-KNX.PG9-LZ-0073
3	BASKET	M.AKS-SPT-INX-005
4	16CM HANDLE	M.AKS-KLP-BKL-007
5	BURNER CONNECTING SHEET	YSC-KNX.PG9-PN-0645
6	BURNER	M.GAZ-BRL-DKM-001
7	INJECTOR M6*0.75 Ø1.00 MM.	M.GAZ-ENJ-LPG-004
8	INJECTOR M6*0.75 Ø1.80 MM	M.GAZ-ENJ-NG-005
9	ANGELED PIPE	M.GAZ-DPO-PG-015
10	CHASSIS	-
11	FRONT PANEL	YSC-KNX.PG9-LZ-0750
12	TICKET	M.AKS-OZL-MTL-006
13	HANDLE	M.AKS-KLP-LUX-004
14	COVER OUTER SHEET	YSC-KNX.PG7-LZ-0488
15	COVER INTERNAL SHEET	YSC-KNX.PG7-PN-0456
16	BATTERY LIGHTER	M.GAZ-CKM-PII-001
17	CABLE 500MM	M.GAZ-CKM-KBL-004
18	Ø 22*7 MM MAGNET	M.MIK-PG-001
19	GASKET	M.CNT-PLS-KLN-002
20	VALVE	M.MEK-TES-KVN-002
21	110-190 GAS BLOCK AND BUTTON	M.GAZ-BLK-SIT-001
22	230 °C LIMITOR	JP.M.ELK-MEK-LMT-005
23	GAS FLEX Ø10 MM 50 CM 3/8	M.GAZ-TES-SPR-017
24	FLEXIABLE GAS PIPEØ 6 MM 35 CM	M.GAZ-TES-SPR-024
25	15 CM LEG	M.AKS-AYK-INX-001
26	RELEASE BUSH	YTL-KNX.PG7-KS-0022
27	GAS BLOCK INLET FITTING	YTL-KNX.GPZ-KS-0001
28	BRACKET	JP.M.GAZ-TES-GLV-002
29	26.9*2.00 MM ELBOW	M.MEK-TES-INX-018
30	CABINET REAR SHEET	YSC-KNX.PG9-PN-0533
31	BACK SHEET METAL	YSC-KNX.PG7-PN-0398
32	CHIMNEY BACK SHEET	YSC-KNX.PG9-PN-0647
33	CHIMNEY FRONT SHEET	YSC-KNX.PG9-PN-0648
34	GAS TANK	M.GAZ-DPO-PG-075
35	THERMO ELEMENT	M.GAZ-TRL-006
36	M4 Spark Plug	M.GAZ-CKM-KBJI-003
37	PILOT GROUP LPL-1028	M.GAZ-PLT-PLC-001
38	40 CM X 7 CM CHIMNEY	JP.M.AKS-DKM-KZN-013
39	BASKET SHAFT Ø 8 365 MM	YTL-KNX.PG9-KS-0002