



# ELECTRIC RANGES

## CONTENTS

---

<b>A</b>	<b>GENERAL INFORMATION .....</b>	<b>Page 2</b>
A1	PRODUCT DESCRIPTION .....	Page 3
A2	TECHNICAL INFORMATION .....	Page 4
A3	TRANSPORTATION .....	Page 5
A4	UNPACKING .....	Page 5
<b>B</b>	<b>INSTALLATION .....</b>	<b>Page 5</b>
<b>C</b>	<b>SAFETY INSTRUCTIONS .....</b>	<b>Page 6</b>
<b>D</b>	<b>OPERATION .....</b>	<b>Page 7</b>
<b>E</b>	<b>CLEANING &amp; MAINTENANCE.....</b>	<b>Page 8</b>
<b>F</b>	<b>TROUBLESHOOTING .....</b>	<b>Page 9</b>
<b>G</b>	<b>SPARE PART LIST- EXPLODING DRAWING .....</b>	<b>Page 10</b>
<b>H</b>	<b>ELECTRIC CIRCUIT SCHEMA .....</b>	<b>Page 31</b>

## A GENERAL INFORMATION

---

Before installing the appliance, read operation and maintenance instructions carefully. Wrong installation and part changing may damage the product or may cause injury on people. These are not in our company's responsibility to damage the appliance intentionally, negligence, detriments because of disobeying instructions and regulations, wrong connections. Unauthorized intervention to appliance invalidates the warranty.

1. This instruction manual should be kept in a safe place for future reference.
2. **Installation should be made in accordance with ordinances and security rules of that country by a qualified service personnel.**
3. This appliance has to be used by trained person.
4. Please turn off the appliance immediately in the event of malfunction or failure. The appliance should be repaired only by authorized service personnel. Please demand original spare part.

# ELECTRIC RANGES

## A1 PRODUCT DESCRIPTION

\*The Professional Electric Ranges ,that provides high efficiency has been designed to be used in industrial kitchens.

Product Code	Dimensions (mm)	Weight (kg)	Packaging Dimensions (mm)
<b>EMP.6KE010</b>	400x635x285	19	480x760x600
<b>EMP.6KE020</b>	600x635x285	24	700x760x600
<b>EMP.PLS.7KE010-Y</b>	400x730x300	31	480x800x620
<b>EMP.PLS.7KE020-Y</b>	800x730x300	55	900x850x620
<b>EMP.PLS.7KE030-Y</b>	1200x730x300	78	1280x860x620
<b>EMP.PLS.7KE010</b>	400x730x300	33	480x800x620
<b>EMP.PLS.7KE020</b>	800x730x300	57	900x850x620
<b>EMP.PLS.7KE030</b>	1200x730x300	80	1280x860x620
<b>EMP.PLS.7KE010-P</b>	400x730x300	50	480x800x620
<b>EMP.PLS.7KE020-P</b>	800x730x300	92	900x850x620
<b>EMP.PLS.7KE030-P</b>	1200x730x300	125	1280x860x620
<b>EMP.PLS.9KE010</b>	400x900x300	45	480x1000x620
<b>EMP.PLS.9KE020</b>	800x900x300	81	900x1000x620
<b>EMP.PLS.9KE030</b>	1200x900x300	121	1280x1000x620
<b>EMP.PLS.9KE010-P</b>	400x900x300	80	480x1000x620
<b>EMP.PLS.9KE020-P</b>	800x900x300	122	900x1000x620
<b>EMP.PLS.9KE030-P</b>	1200x900x300	155	1280x1000x620

**A2 TECHNICAL INFORMATION**

<b>Product Code</b>	<b>Model</b>	<b>Electric Inlet</b>	<b>Cable (mm<sup>2</sup>)</b>	<b>Power (KW)</b>
<b>EMP.6KE010</b>	2 Round Plates	230V AC N PE	3X2,5	3,5
<b>EMP.6KE020</b>	4 Round Plates	400V AC 3N PE	5X2,5	7
<b>EMP.PLS.7KE010-Y</b>	2 Round Plates	230V AC N PE	3X2,5	4
<b>EMP.PLS.7KE020-Y</b>	4 Round Plates	400V AC 3N PE	5X2,5	8
<b>EMP.PLS.7KE030-Y</b>	6 Round Plates	400V AC 3N PE	5X2,5	12
<b>EMP.PLS.7KE010</b>	2 Square Plates	230V AC N PE	3X2,5	4,5
<b>EMP.PLS.7KE020</b>	4 Square Plate	400V AC 3N PE	5X2,5	9
<b>EMP.PLS.7KE030</b>	6 Square Plate	400V AC 3N PE	5X2,5	13,5
<b>EMP.PLS.7KE010-P</b>	2 Russian Type Plates	400V AC N PE	5X2,5	5,6
<b>EMP.PLS.7KE020-P</b>	4 Russian Type Plates	400V AC 3N PE	5X2,5	11,2
<b>EMP.PLS.7KE030-P</b>	6 Russian Type Plates	400V AC 3N PE	5X2,5	16,8
<b>EMP.PLS.9KE010</b>	2 Square Plates	400V AC 3N PE	5X2,5	8
<b>EMP.PLS.9KE020</b>	4 Square Plate	400V AC 3N PE	5X4	16
<b>EMP.PLS.9KE030</b>	6 Square Plate	400V AC 3N PE	5X2,5	24
<b>EMP.PLS.9KE010-P</b>	2 Russian Type Plates	400V AC 3N PE	3X2,5	5,6
<b>EMP.PLS.9KE020-P</b>	4 Russian Type Plates	400V AC 3N PE	5X2,5	11,2
<b>EMP.PLS.9KE030-P</b>	6 Russian Type Plates	400V AC 3N PE	5X2,5	16,8

## ELECTRIC RANGES

### A3 TRANSPORTATION

---

\*This appliance can not be moved by hand from area to area. It must be moved on pallet with forklift truck.

### A4 UNPACKING

---

\*Please unpack the package according to the security codes and ordinances of current country and get rid from the pack. Parts which contacts with food are produced by stainless steel. All plastic parts are marked by material's symbol.

\*Please check that all the parts of appliance had come completely and if they are damaged or not during the shipping.

### B INSTALLATION


---

\*Please place the product to straight and sturdy ground, please take necessary steps against possibility of overturn.

\*Technician who will serve for installation and service for the appliance must be professional on this subject and must have installation and service licenses by the company.

\*Connection to Electric Power Supply must be done by authorized person.

\*Please be sure that the voltage connected to appliance must be equal with the voltage which is on appliance's label.

 This appliance must be connected to an earthed outlet in accordance with safety rules and standards.









\*Appliance's earthing must be connected to earthing line on panel which is nearest to electric installation.

\*Connection to the main fuse and leak current fuse must be done in accordance with the current regulations.

\*If the location where electric ranges placed is covered with nonflammable heat insulation material, the distance between them must be 5 cm. Otherwise it should be at least 20 cm. The appliance shouldn't be operated under chimney hood.

**C SAFETY INSTRUCTIONS**

---

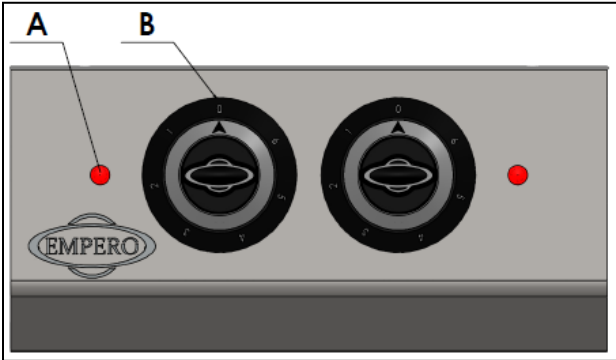
-  \*Do not use the appliance in insufficient lighted place.
-  \*Do not touch the moving attachments while the appliance operates.
-  \*Do not install the appliance in the presence of flammable or explosive materials.
-  \*Do not operate the appliance when the machine is empty.
-  \*Do not load so less or more than appliance's capacity.
-  \*Do not attempt to use the appliance without suitable protective equipments.
-  \*Because of any reason if there is a fire or flame flare where the appliance is used, turn off all gas valves and electric contactor switch quickly and use fire extinguisher. Never use water to extinguish the fire.
-  \*All the damages because of not having earthing connection will not be on warranty.

## ELECTRIC RANGES

### D OPERATION

---

#### \*Control Panel;



**A** : Indicator lamp

**B** : Heat setting button

#### \*Operating;

- Plug in the appliance.
- Put the cooker on the range.
- Adjust heat setting buttons to desired temperature.
- The range reaches the desired temperature and starts to operate.
- After operation is completed, switch heat setting buttons to (0) position and unplug the appliance.

## **E      CLEANING & MAINTENANCE**

---

### ➤ **CLEANING AND MAINTENANCE AFTER EVERY USE**

- Always turn off the appliance and disconnect from the power supply before cleaning.
- Clean the outer surface of the appliance with a wet cloth and chrome shiner.
- Do not use abrasive cleaning chemicals as these can leave harmful residues.
- Do not clean the appliance by spraying water directly, otherwise electric motor may get damaged.

### ➤ **PERIODIC CLEANING AND MAINTENANCE**

- Maintenance should be done by qualified person.
- Get the periodic maintenance of the appliance once in every 15 days.
- Check the heater's electric connection in periodic times.
- Maintenance of the appliance's contactor should be done by compressed air according to frequency of use.



## ELECTRIC RANGES

### F TROUBLESHOOTING

<b>THE APPLIANCE DOESN'T OPERATE</b>	<ol style="list-style-type: none"><li>1. Check if the appliance is plugged in.</li><li>2. Check the electrical connections and voltage.</li></ol>
--------------------------------------	---

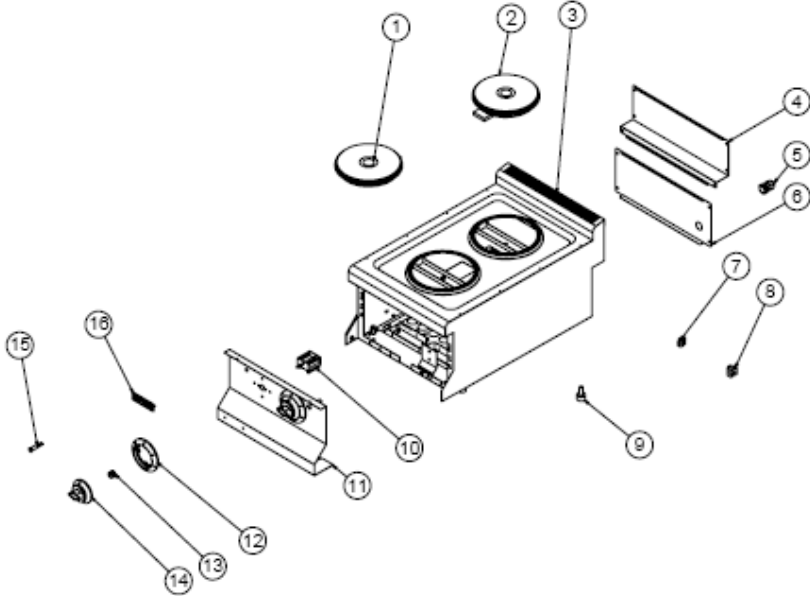
<b>THE APPLIANCE DOESN'T COOK WELL</b>	<ol style="list-style-type: none"><li>1. Check if it is operated at required heat or not.</li></ol>
--	---

<b>THE APPLIANCE STOPPED</b>	<ol style="list-style-type: none"><li>1. The appliance can stop due to low voltage. In this situation check the voltage.</li><li>2. When the plates get too hot, they protect themselves and can be operated again after they cool down.</li></ol>
------------------------------	--

<ul style="list-style-type: none"><li>• If cooking at electric ranges is not done at suitable quality</li><li>• If any function of security doesn't work<ul style="list-style-type: none"><li>➤ Do not use the appliance.</li></ul></li></ul>
---

**\*If these problems are still going on, contact with our authorized services.**

## G SPARE PART LIST-EXPLODING DRAWING

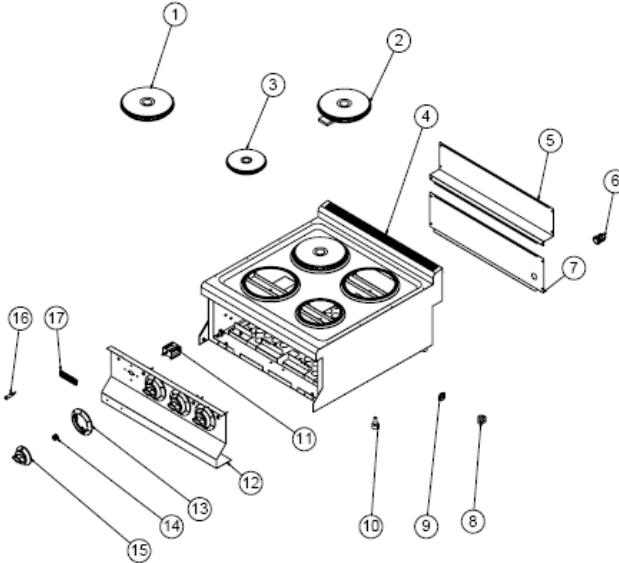


**PRODUCT CODE : EMP.6KE010**

NO	PRODUCT NAME	P.CODE
1	HOTPLATE 1.5 KW. Ø180 230V	M.ELK-HOT-YHT-001
2	HOTPLATE 2 KW.Ø180 230V	M.ELK-HOT-YHT-002
3	CHASSIS	-
4	REAR TOP SHEET	YSC-KNX.SNC-PN-0105
5	PG-16 CABLE FITTING	JP.M.ELK-RKR-PLS-001
6	REAR BOTTOM SHEET	YSC-KNX.SNC-PN-0106
7	NO:2 25 MM TERMINAL	M.ELK-KLM-RKL-4*4-SRY
8	TERMINAL	M.ELK-KLM-PRS-001
9	M10*35 FOOT	JP.M.AKS-AYK-PLS-002
10	SWITCH 16A	JP.M.ELK-SLT-EGO-002
11	FRONT PANEL	YSC-KNX.SNC-LZ-0161
12	0-6 BUTTON BUMPER	M.AKS-DGM-EMP-021
13	BUTTON SOCKET 6 MM	M.AKS-DGM-SKT-002
14	BUTTON	M.AKS-DGM-EMP-024
15	SIGNAL LAMP	M.ELK-LMB-SNY-002
16	TICKET	JP.M.AKS-OZL-MTL-001

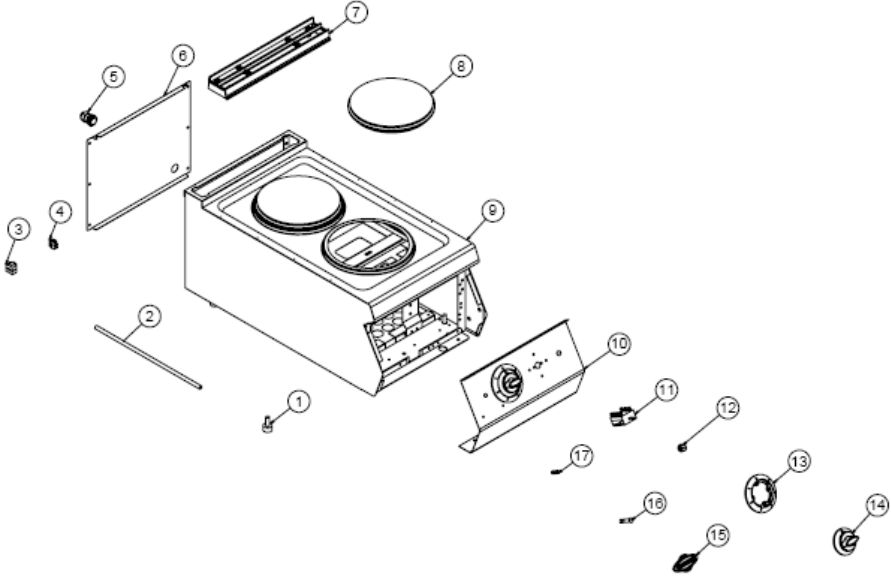
# ELECTRIC RANGES

## G SPARE PART LIST-EXPLODING DRAWING



PRODUCT CODE : EMP.6KE020		
NO	PRODUCT NAME	P.CODE
1	HOTPLATE 1.5 KW. Ø180 230V	M.ELK-HOT-YHT-001
2	HOTPLATE 2 KW.Ø180 230V	M.ELK-HOT-YHT-002
3	HOTPLATE 1.5 KW Ø145 230V	M.ELK-HOT-YHT-003
4	CHASSIS	-
5	REAR TOP SHEET	YSC-KNX.SNC-PN-0110
6	PG-16 CABLE FITTING	JP.M.ELK-RKR-PLS-001
7	REAR BOTTOM SHEET	YSC-KNX.SNC-PN-0111
8	TERMINAL	M.ELK-KLM-PRS-001
9	NO:2 25 MM TERMINAL	M.ELK-KLM-RKL-4*4-SRY
10	M10*35 FOOT	JP.M.AKS-AYK-PLS-002
11	SWITCH 16A	JP.M.ELK-SLT-EGO-002
12	FRONT PANEL	YSC-KNX.SNC-LZ-0162
13	0-6 BUTTON BUMPER	M.AKS-DGM-EMP-021
14	BUTTON SOCKET 6 MM	M.AKS-DGM-SKT-002
15	BUTTON	M.AKS-DGM-EMP-024
16	SIGNAL LAMP	M.ELK-LMB-SNY-002
17	TICKET	JP.M.AKS-OZL-MTL-001

## G SPARE PART LIST-EXPLODING DRAWING

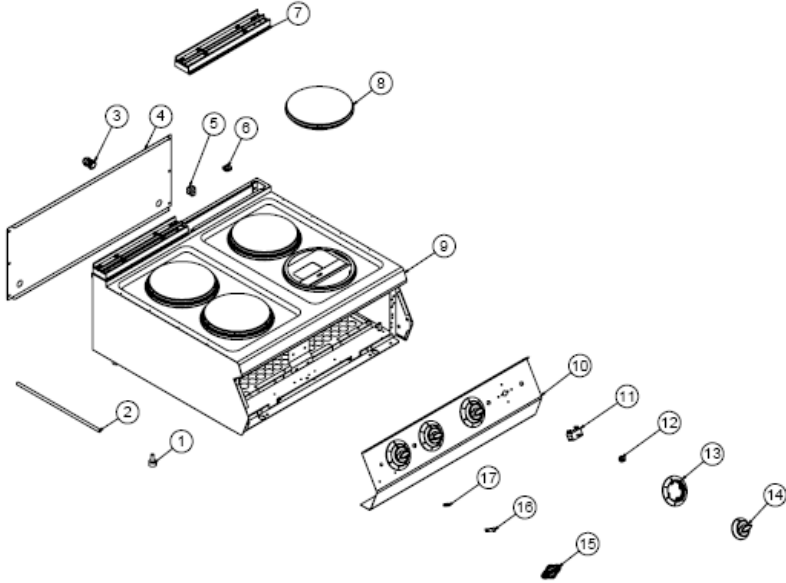


**PRODUCT CODE : EMP.PLS.7KE010-Y**

NO	PRODUCT NAME	P.CODE
1	M10*35 FOOT	JP.M.AKS-AYK-PLS-002
2	CABLE PIPE 450 MM	YBR-KNX.PG9-KS-0002
3	TERMINAL	M.ELK-KLM-PRS-001
4	NO:2 25 MM TERMINAL	M.ELK-KLM-RKL-4*4-SRY
5	PG-16 CABLE FITTING	JP.M.ELK-RKR-PLS-001
6	BACK COVER SHEET	JP.YSC-KNX.PG7-PN-0391
7	40 CM X 7 CM CHIMNEY	JP.M.AKS-DKM-KZN-013
8	HOTPLATE 2 KW Ø220 230V	M.ELK-HOT-YHT-006
9	CHASSIS	-
10	FRONT PANEL	YSC-KNX.PG7-LZ-0429
11	SWITCH 16A	JP.M.ELK-SLT-EGO-002
12	BUTTON SOCKET 6 MM	M.AKS-DGM-SKT-002
13	0-6 BUTTON BUMPER	M.AKS-DGM-EMP-021
14	BUTTON	M.AKS-DGM-EMP-024
15	TICKET	M.AKS-OZL-MTL-006
16	SIGNAL LAMP	M.ELK-LMB-SNY-002
17	M4 FRAME SPRING	M.YAY-PG-004

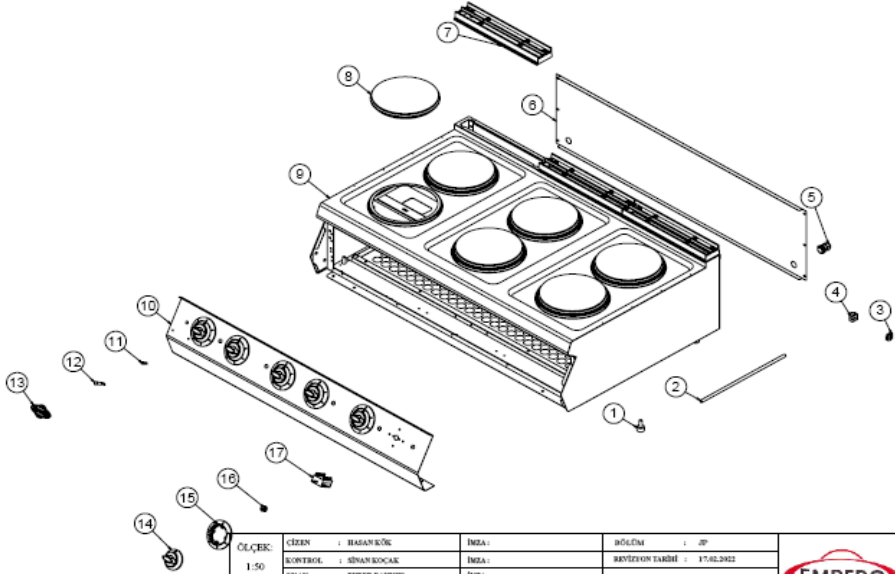
# ELECTRIC RANGES

## G SPARE PART LIST-EXPLODING DRAWING



PRODUCT CODE : EMP.PLS.7KE020-Y		
NO	PRODUCT NAME	P.CODE
1	M10*35 FOOT	JP.M.AKS-AYK-PLS-002
2	CABLE PIPE 450 MM	YBR-KNX.PG9-KS-0002
3	PG-16 CABLE FITTING	JP.M.ELK-RKR-PLS-001
4	BACK SHEET METAL	YSC-KNX.PG7-PN-0398
5	TERMINAL	M.ELK-KLM-PRS-001
6	NO:2 25 MM TERMINAL	M.ELK-KLM-RKL-4*4-SRY
7	40 CM X 7 CM CHIMNEY	JP.M.AKS-DKM-KZN-013
8	HOTPLATE 2 KW Ø220 230V	M.ELK-HOT-YHT-006
9	CHASSIS	-
10	FRONT PANEL	YSC-KNX.PG7-LZ-0430
11	SWITCH 16A	JP.M.ELK-SLT-EGO-002
12	BUTTON SOCKET 6 MM	M.AKS-DGM-SKT-002
13	0-6 BUTTON BUMPER	M.AKS-DGM-EMP-021
14	BUTTON	M.AKS-DGM-EMP-024
15	TICKET	M.AKS-OZL-MTL-006
16	SIGNAL LAMP	M.ELK-LMB-SNY-002
17	M4 FRAME SPRING	M.YAY-PG-004

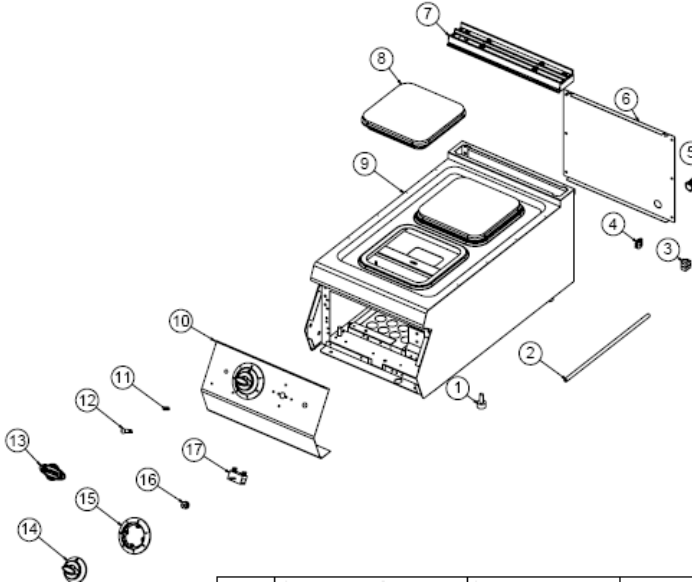
## G SPARE PART LIST-EXPLODING DRAWING



PRODUCT CODE : EMP.PLS.7KE030-Y			
NO	PRODUCT NAME	P.CODE	
1	M10*35 FOOT	JP.M.AKS-AYK-PLS-002	
2	CABLE PIPE 450 MM	YBR-KNX.PG9-KS-0002	
3	NO:2 25 MM TERMINAL	M.ELK-KLM-RKL-4*4-SRY	
4	TERMINAL	M.ELK-KLM-PRS-001	
5	PG-16 CABLE FITTING	JP.M.ELK-RKR-PLS-001	
6	BACK SHEET METAL	YSC-KNX.PG7-LZ-0435	
7	40 CM X 7 CM CHIMNEY	JP.M.AKS-DKM-KZN-013	
8	HOTPLATE 2 KW Ø220 230V	M.ELK-HOT-YHT-006	
9	CHASSIS	-	
10	FRONT PANEL	YSC-KNX.PG7-LZ-0434	
11	M4 FRAME SPRING	M.YAY-PG-004	
12	SIGNAL LAMP	M.ELK-LMB-SNY-002	
13	TICKET	M.AKS-OZL-MTL-006	
14	BUTTON	M.AKS-DGM-EMP-024	
15	0-6 BUTTON BUMPER	M.AKS-DGM-EMP-021	
16	BUTTON SOCKET 6 MM	M.AKS-DGM-SKT-002	
17	SWITCH 16A	JP.M.ELK-SLT-EGO-002	

# ELECTRIC RANGES

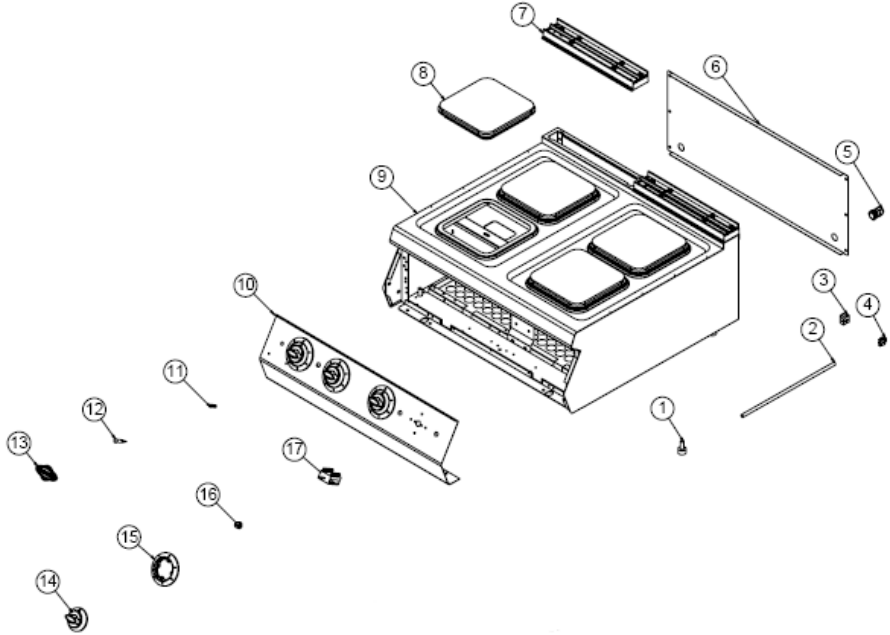
## G SPARE PART LIST-EXPLODING DRAWING



**PRODUCT CODE : EMP.PLS.7KE010**

NO	PRODUCT NAME	P.CODE
1	M10*35 FOOT	JP.M.AKS-AYK-PLS-002
2	CABLE PIPE 450 MM	YBR-KNX.PG9-KS-0002
3	TERMINAL	M.ELK-KLM-PRS-001
4	NO:2 25 MM TERMINAL	M.ELK-KLM-RKL-4*4-SRY
5	PG-16 CABLE FITTING	JP.M.ELK-RKR-PLS-001
6	BACK COVER SHEET	JP.YSC-KNX.PG7-PN-0391
7	40 CM X 7 CM CHIMNEY	JP.M.AKS-DKM-KZN-013
8	SQUARE HOTPLATE 230V 2250 W 220*220	M.ELK-HOT-KHT-005
9	CHASSIS	-
10	FRONT PANEL	YSC-KNX.PG7-LZ-0429
11	M4 FRAME SPRING	M.YAY-PG-004
12	SIGNAL LAMP	M.ELK-LMB-SNY-002
13	TICKET	M.AKS-OZL-MTL-006
14	BUTTON	M.AKS-DGM-EMP-024
15	0-6 BUTTON BUMPER	M.AKS-DGM-EMP-021
16	BUTTON SOCKET 6 MM	M.AKS-DGM-SKT-002
17	SWITCH 16A	JP.M.ELK-SLT-EGO-002

## G SPARE PART LIST-EXPLODING DRAWING



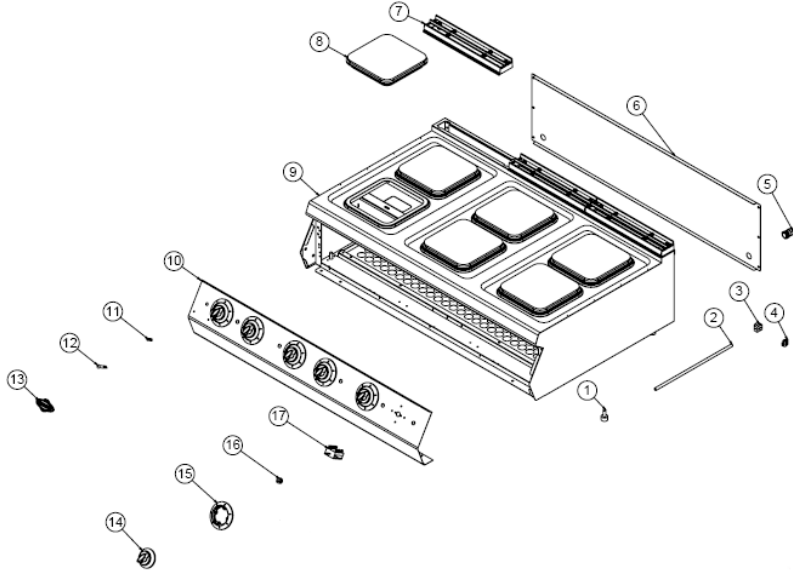
**PRODUCT CODE : EMP.PLS.7KE020**

NO	PRODUCT NAME	P.CODE
1	M10*35 FOOT	JP.M.AKS-AYK-PLS-002
2	CABLE PIPE 450 MM	YBR-KNX.PG9-KS-0002
3	TERMINAL	M.ELK-KLM-PRS-001
4	NO:2 25 MM TERMINAL	M.ELK-KLM-RKL-4*4-SRY
5	PG-16 CABLE FITTING	JP.M.ELK-RKR-PLS-001
6	BACK SHEET METAL	YSC-KNX.PG7-PN-0398
7	40 CM X 7 CM CHIMNEY	JP.M.AKS-DKM-KZN-013
8	SQUARE HOTPLATE 230V 2250 W 220*220	M.ELK-HOT-KHT-005
9	CHASSIS	-
10	FRONT PANEL	YSC-KNX.PG7-LZ-0430
11	M4 FRAME SPRING	M.YAY-PG-004
12	SIGNAL LAMP	M.ELK-LMB-SNY-002
13	TICKET	M.AKS-OZL-MTL-006
14	BUTTON	M.AKS-DGM-EMP-024
15	0-6 BUTTON BUMPER	M.AKS-DGM-EMP-021



# ELECTRIC RANGES

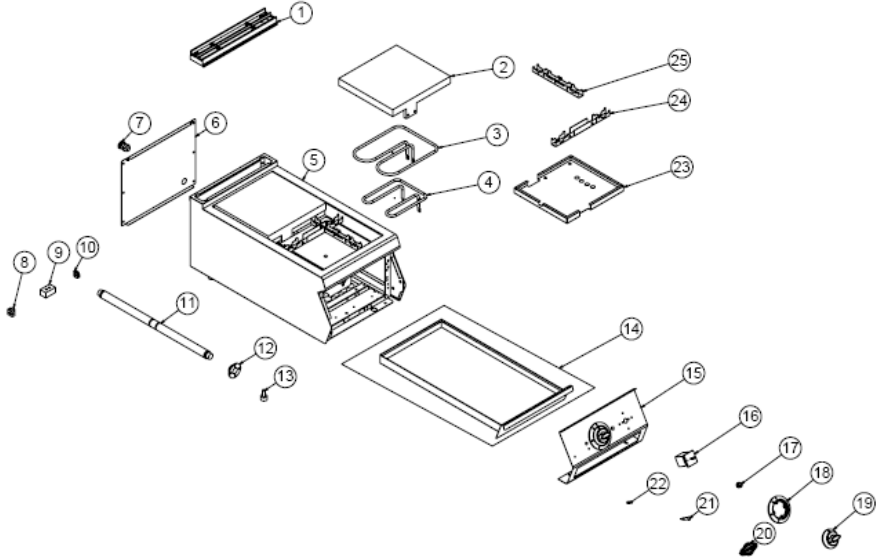
## G SPARE PART LIST-EXPLODING DRAWING



**PRODUCT CODE : EMP.PLS.7KE030**

NO	PRODUCT NAME	P.CODE
1	M10*35 FOOT	JP.M.AKS-AYK-PLS-002
2	CABLE PIPE 450 MM	YBR-KNX.PG9-KS-0002
3	TERMINAL	M.ELK-KLM-PRS-001
4	NO:2 25 MM TERMINAL	M.ELK-KLM-RKL-4*4-SRY
5	PG-16 CABLE FITTING	JP.M.ELK-RKR-PLS-001
6	BACK SHEET METAL	YSC-KNX.PG7-LZ-0435
7	40 CM X 7 CM CHIMNEY	JP.M.AKS-DKM-KZN-013
8	SQUARE HOTPLATE 230V 2250 W 220*220	M.ELK-HOT-KHT-005
9	CHASSIS	-
10	FRONT PANEL	YSC-KNX.PG7-LZ-0434
11	M4 FRAME SPRING	M.YAY-PG-004
12	SIGNAL LAMP	M.ELK-LMB-SNY-002
13	TICKET	M.AKS-OZL-MTL-006
14	BUTTON	M.AKS-DGM-EMP-024
15	0-6 BUTTON BUMPER	M.AKS-DGM-EMP-021
16	BUTTON SOCKET 6 MM	M.AKS-DGM-SKT-002
17	SWITCH 16A	JP.M.ELK-SLT-EGO-002

## G SPARE PART LIST-EXPLODING DRAWING



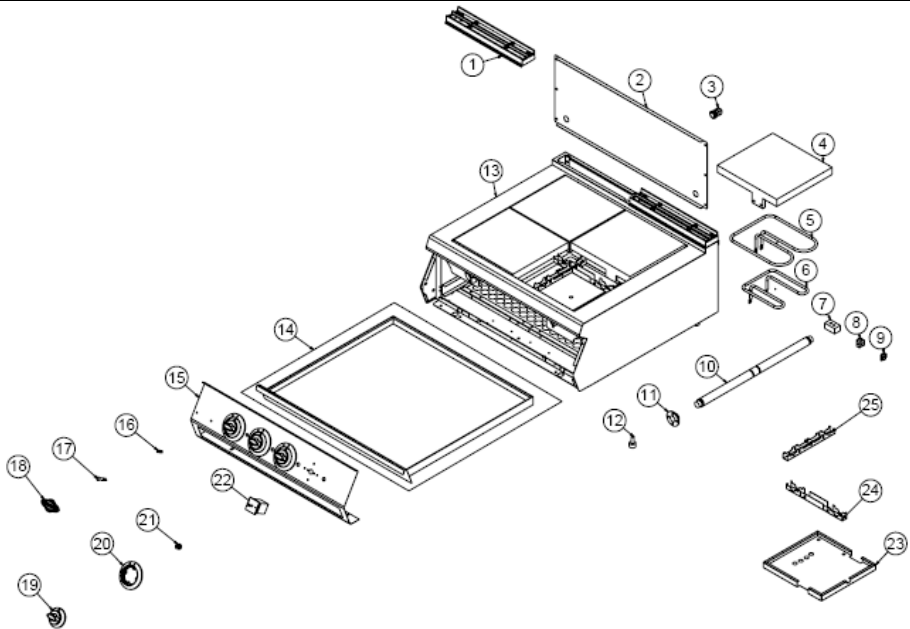
**PRODUCT CODE : EMP.PLS.7KE010-P**

NO	PRODUCT NAME	P.CODE
1	40 CM X 7 CM CHIMNEY	JP.M.AKS-DKM-KZN-013
2	RESISTANCE HOUSING	M.AKS-DKM-KZN-028
3	380V-1800W RESISTANCE	M.ELK-RZS-BRU-IZG-016
4	380V-1000W RESISTANCE	M.ELK-RZS-BRU-IZG-017
5	CHASSIS	-
6	BACK COVER SHEET	JP.YSC-KNX.PG7-PN-0391
7	PG-16 CABLE FITTING	JP.M.ELK-RKR-PLS-001
8	TERMINAL	M.ELK-KLM-PRS-005
9	TERMINAL	M.ELK-KLM-PRS-004
10	NO:2 25 MM TERMINAL	M.ELK-KLM-RKL-4*4-SRY
11	MECHANISM SHAFT Ø30 595MM	YTL-KNX.PG7-KS-0030
12	MECHANISM BUSH	YTL-KNX.PG7-KS-0031
13	M10*35 FOOT	JP.M.AKS-AYK-PLS-002
14	DRAWER	ARA-KNX.PG7-0017
15	FRONT PANEL	YSC-KNX.PG7-LZ-1083
16	Y90C393MK25 3*25 - SWITCH	JP.M.ELK-SLT-PKO-007
17	BUTTON SOCKET	JP.M.AKS-DGM-SKT-003

# ELECTRIC RANGES

18	0-1-2-3 BUTTON BUMPER	M.AKS-DGM-EMP-042
19	BUTTON	M.AKS-DGM-EMP-024
20	TICKET	M.AKS-OZL-MTL-006
21	SIGNAL LAMP	M.ELK-LMB-SNY-002
22	M4 FRAME SPRING	M.YAY-PG-004
23	INSULATION SHEET	YSC-KNX.PG7-LZ-1060
24	RESISTANCE HOLDING SHEET-2	YSC-KNX.PG7-LZ-1062
25	RESISTANCE HOLDING SHEET-1	YSC-KNX.PG7-LZ-1061

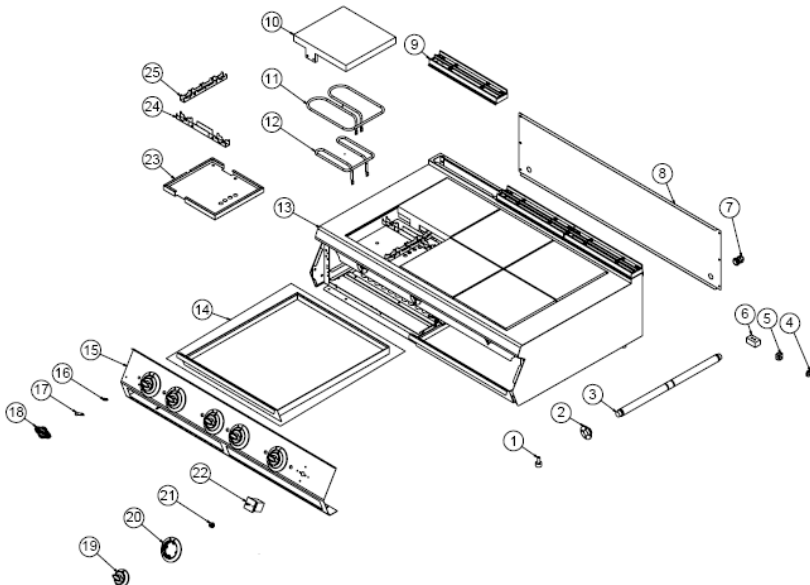
## G SPARE PART LIST-EXPLODING DRAWING



PRODUCT CODE : EMP.PLS.7KE020-P		
NO	PRODUCT NAME	P.CODE
1	40 CM X 7 CM CHIMNEY	JP.M.AKS-DKM-KZN-013
2	BACK SHEET METAL	YSC-KNX.PG7-PN-0398
3	PG-16 CABLE FITTING	JP.M.ELK-RKR-PLS-001
4	RESISTANCE HOUSING	M.AKS-DKM-KZN-028
5	380V-1800W RESISTANCE	M.ELK-RZS-BRU-IZG-016
6	380V-1000W RESISTANCE	M.ELK-RZS-BRU-IZG-017
7	TERMINAL	M.ELK-KLM-PRS-004

8	TERMINAL	M.ELK-KLM-PRS-005
9	NO:2 25 MM TERMINAL	M.ELK-KLM-RKL-4*4-SRY
10	MECHANISM SHAFT Ø30 595MM	YTL-KNX.PG7-KS-0030
11	MECHANISM BUSH	YTL-KNX.PG7-KS-0031
12	M10*35 FOOT	JP.M.AKS-AYK-PLS-002
13	CHASSIS	-
14	DRAWER	ARA-KNX.PG7-0019
15	FRONT PANEL	YSC-KNX.PG7-LZ-1063
16	M4 FRAME SPRING	M.YAY-PG-004
17	SIGNAL LAMP	M.ELK-LMB-SNY-002
18	TICKET	M.AKS-OZL-MTL-006
19	BUTTON	M.AKS-DGM-EMP-024
20	0-1-2-3 BUTTON BUMPER	M.AKS-DGM-EMP-042
21	BUTTON SOCKET	JP.M.AKS-DGM-SKT-003
22	Y90C393MK25 3*25 - SWITCH	JP.M.ELK-SLT-PKO-007
23	INSULATION SHEET	YSC-KNX.PG7-LZ-1060
24	RESISTANCE HOLDING SHEET-2	YSC-KNX.PG7-LZ-1062
25	RESISTANCE HOLDING SHEET-1	YSC-KNX.PG7-LZ-1061

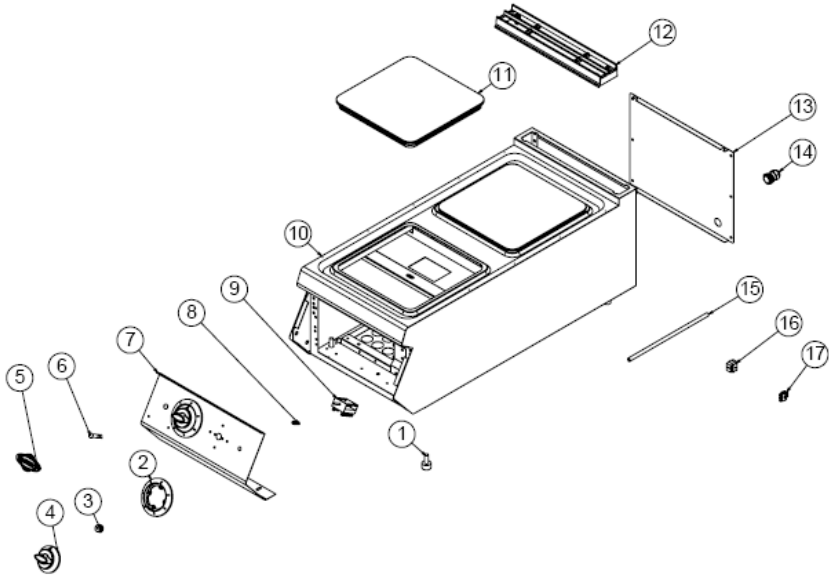
## G SPARE PART LIST-EXPLODING DRAWING



# ELECTRIC RANGES

PRODUCT CODE : EMP.PLS.7KE030-P		
NO	PRODUCT NAME	P.CODE
1	M10*35 FOOT	JP.M.AKS-AYK-PLS-002
2	MECHANISM BUSH	YTL-KNX.PG7-KS-0031
3	MECHANISM SHAFT Ø30 595MM	YTL-KNX.PG7-KS-0030
4	NO:2 25 MM TERMINAL	M.ELK-KLM-RKL-4*4-SRY
5	TERMINAL	M.ELK-KLM-PRS-005
6	TERMINAL	M.ELK-KLM-PRS-004
7	PG-16 CABLE FITTING	JP.M.ELK-RKR-PLS-001
8	BACK SHEET METAL	YSC-KNX.PG7-LZ-0435
9	40 CM X 7 CM CHIMNEY	JP.M.AKS-DKM-KZN-013
10	RESISTANCE HOUSING	M.AKS-DKM-KZN-028
11	380V-1800W RESISTANCE	M.ELK-RZS-BRU-IZG-016
12	380V-1000W RESISTANCE	M.ELK-RZS-BRU-IZG-017
13	CHASSIS	-
14	DRAWER	ARA-KNX.PG7-0021
15	FRONT PANEL	YSC-KNX.PG7-LZ-1089
16	M4 FRAME SPRING	M.YAY-PG-004
17	SIGNAL LAMP	M.ELK-LMB-SNY-002
18	TICKET	M.AKS-OZL-MTL-006
19	BUTTON	M.AKS-DGM-EMP-024
20	0-1-2-3 BUTTON BUMPER	M.AKS-DGM-EMP-042
21	BUTTON SOCKET	JP.M.AKS-DGM-SKT-003
22	Y90C393MK25 3*25 - SWITCH	JP.M.ELK-SLT-PKO-007
23	INSULATION SHEET	YSC-KNX.PG7-LZ-1060
24	RESISTANCE HOLDING SHEET-2	YSC-KNX.PG7-LZ-1062
25	RESISTANCE HOLDING SHEET-1	YSC-KNX.PG7-LZ-1061

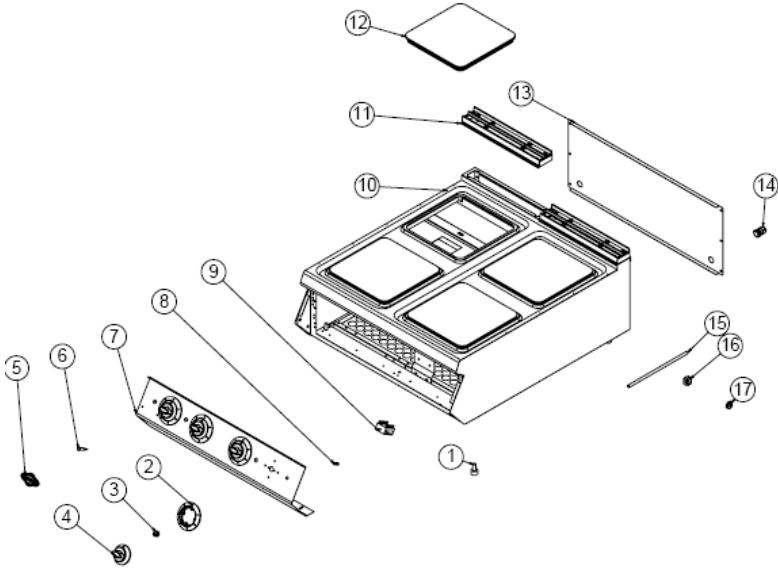
## G SPARE PART LIST-EXPLODING DRAWING



PRODUCT CODE : EMP.PLS.9KE010		
NO	PRODUCT NAME	P.CODE
1	M10*35 FOOT	JP.M.AKS-AYK-PLS-002
2	0-6 BUTTON BUMPER	M.AKS-DGM-EMP-021
3	BUTTON SOCKET 6 MM	M.AKS-DGM-SKT-002
4	BUTTON	M.AKS-DGM-EMP-024
5	TICKET	M.AKS-OZL-MTL-006
6	SIGNAL LAMP	M.ELK-LMB-SNY-002
7	FRONT PANEL	YSC-KNX.PG9-LZ-0758
8	M4 FRAME SPRING	M.YAY-PG-004
9	SWITCH 16A	JP.M.ELK-SLT-EGO-002
10	CHASSIS	-
11	SQUARE HOTPLATE 4KW 380-400V 300*300 MM	M.ELK-HOT-KHT-001
12	40 CM X 7 CM CHIMNEY	JP.M.AKS-DKM-KZN-013
13	BACK COVER SHEET	JP.YSC-KNX.PG7-PN-0391
14	PG-16 CABLE FITTING	JP.M.ELK-RKR-PLS-001
15	CABLE PIPE 720 MM	YBR-KNX.PG9-KS-0004
16	TERMINAL	M.ELK-KLM-PRS-001
17	NO:2 25 MM TERMINAL	M.ELK-KLM-RKL-4*4-SRY

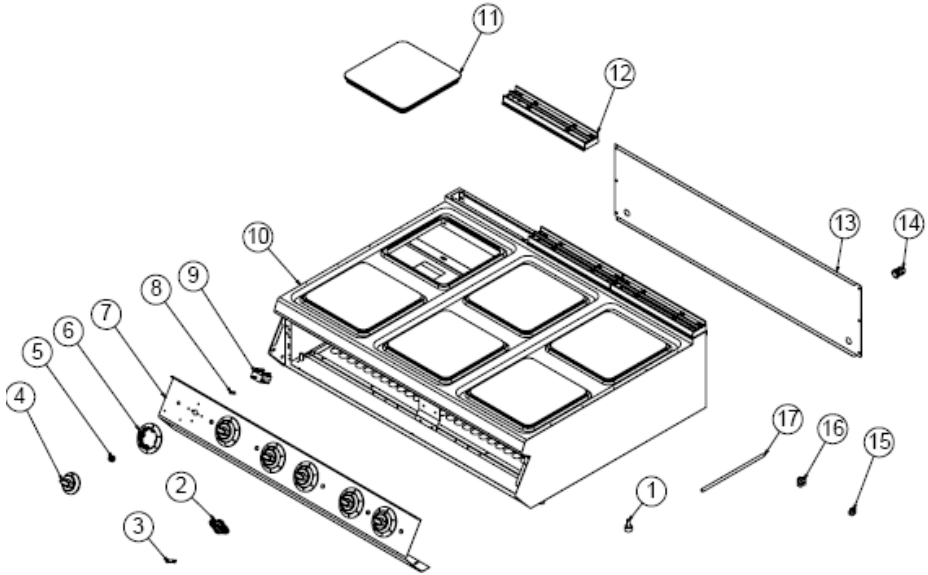
# ELECTRIC RANGES

## G SPARE PART LIST-EXPLODING DRAWING



PRODUCT CODE : EMP.PLS.9KE020		
NO	PRODUCT NAME	P.CODE
1	M10*35 FOOT	JP.M.AKS-AYK-PLS-002
2	0-6 BUTTON BUMPER	M.AKS-DGM-EMP-021
3	BUTTON SOCKET 6 MM	M.AKS-DGM-SKT-002
4	BUTTON	M.AKS-DGM-EMP-024
5	TICKET	M.AKS-OZL-MTL-006
6	SIGNAL LAMP	M.ELK-LMB-SNY-002
7	FRONT PANEL	YSC-KNX.PG9-LZ-0759
8	M4 FRAME SPRING	M.YAY-PG-004
9	SWITCH 16A	JP.M.ELK-SLT-EGO-002
10	CHASSIS	-
11	40 CM X 7 CM CHIMNEY	JP.M.AKS-DKM-KZN-013
12	SQUARE HOTPLATE 4KW 380-400V 300*300 MM	M.ELK-HOT-KHT-001
13	BACK SHEET METAL	YSC-KNX.PG7-PN-0398
14	PG-16 CABLE FITTING	JP.M.ELK-RKR-PLS-001
15	CABLE PIPE 720 MM	YBR-KNX.PG9-KS-0004
16	TERMINAL	M.ELK-KLM-PRS-001
17	NO:2 25 MM TERMINAL	M.ELK-KLM-RKL-4*4-SRY

## G SPARE PART LIST-EXPLODING DRAWING

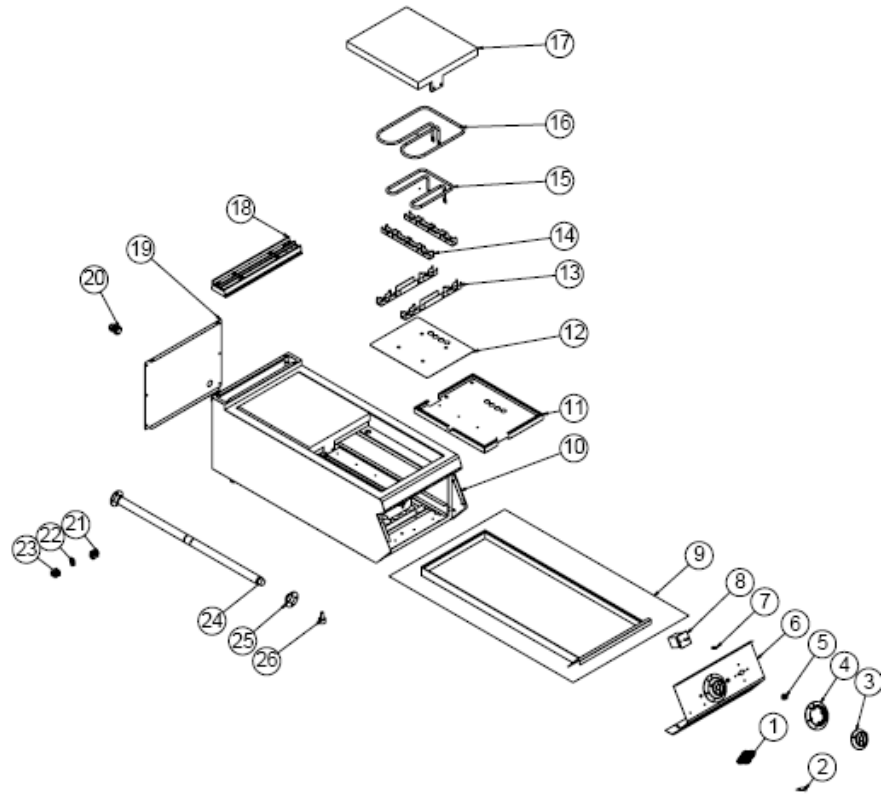


PRODUCT CODE : EMP.PLS.9KE030		
NO	PRODUCT NAME	P.CODE
1	M10*35 FOOT	JP.M.AKS-AYK-PLS-002
2	TICKET	M.AKS-OZL-MTL-006
3	SIGNAL LAMP	M.ELK-LMB-SNY-002
4	BUTTON	M.AKS-DGM-EMP-024
5	BUTTON SOCKET 6 MM	M.AKS-DGM-SKT-002
6	0-6 BUTTON BUMPER	M.AKS-DGM-EMP-021
7	FRONT PANEL	YSC-KNX.PG9-LZ-0760
8	M4 FRAME SPRING	M.YAY-PG-004
9	SWITCH 16A	JP.M.ELK-SLT-EGO-002
10	CHASSIS	-
11	SQUARE HOTPLATE 4KW 380-400V 300*300 MM	M.ELK-HOT-KHT-001
12	40 CM X 7 CM CHIMNEY	JP.M.AKS-DKM-KZN-013
13	BACK SHEET METAL	YSC-KNX.PG7-LZ-0435
14	PG-16 CABLE FITTING	JP.M.ELK-RKR-PLS-001
15	NO:2 25 MM TERMINAL	M.ELK-KLM-RKL-4*4-SRY
16	TERMINAL	M.ELK-KLM-PRS-001
17	CABLE PIPE 720 MM	YBR-KNX.PG9-KS-0004



# ELECTRIC RANGES

## G SPARE PART LIST-EXPLODING DRAWING



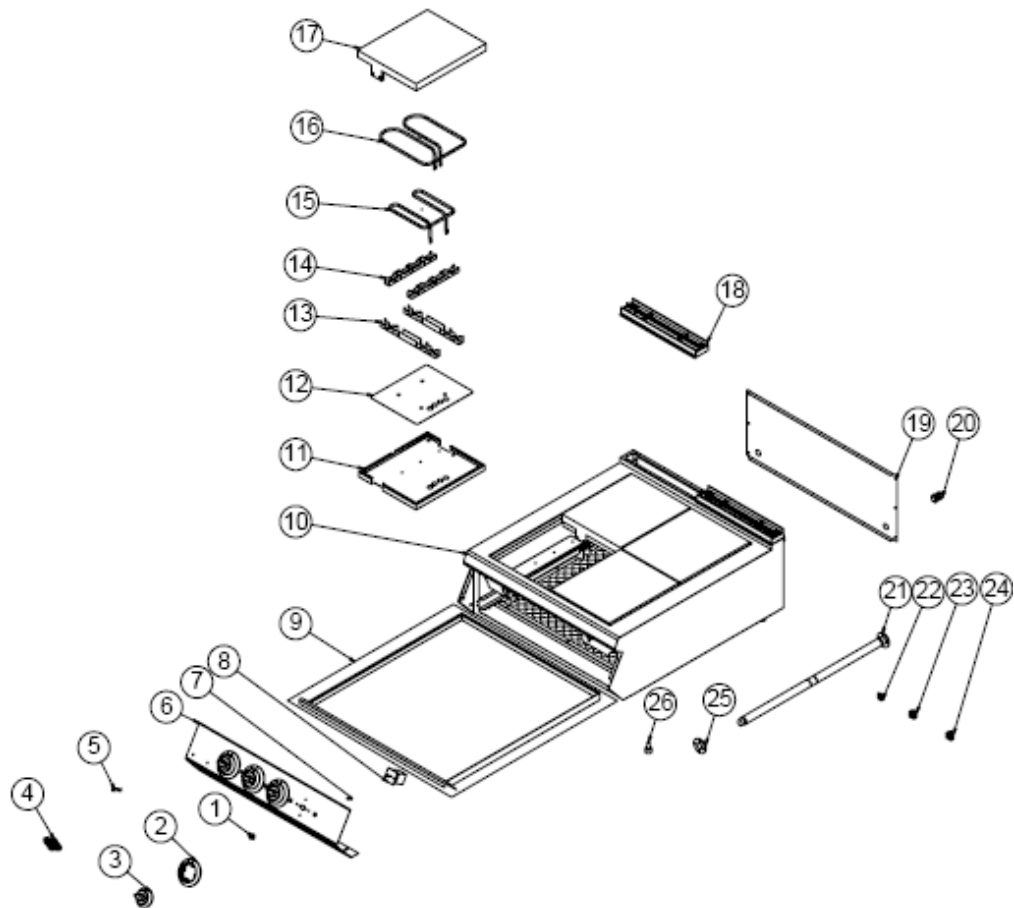
**PRODUCT CODE : EMP.PLS.9KE010-P**

NO	PRODUCT NAME	P.CODE
1	TICKET	M.AKS-OZL-MTL-006
2	SIGNAL LAMP	M.ELK-LMB-SNY-002
3	BUTTON	M.AKS-DGM-EMP-024
4	0-1-2-3 BUTTON BUMPER	M.AKS-DGM-EMP-042
5	BUTTON SOCKET	JP.M.AKS-DGM-SKT-003
6	FRONT PANEL LEATHER	YSC-KNX.PG9-LZ-1044
7	M4 FRAME SPRING	M.YAY-PG-004
8	Y90C393MK25 3*25 - SWITCH	JP.M.ELK-SLT-PKO-007
9	DRAWER	ARA-KNX.PG9-0005

10	CHASSIS	-
11	INSULATION SHEET	YSC-KNX.PG9-LZ-1026
12	COVER SHEET	YSC-KNX.PG9-LZ-1025
13	RESISTANCE HOLDING SHEET-2	YSC-KNX.PG7-LZ-1062
14	RESISTANCE HOLDING SHEET-1	YSC-KNX.PG7-LZ-1061
15	380V-1000W RESISTANCE	M.ELK-RZS-BRU-IZG-017
16	380V-1800W RESISTANCE	M.ELK-RZS-BRU-IZG-016
17	RESISTANCE HOUSING	M.AKS-DKM-KZN-029
18	40 CM X 7 CM CHIMNEY	JP.M.AKS-DKM-KZN-013
19	BACK COVER SHEET	JP.YSC-KNX.PG7-PN-0391
20	PG-16 CABLE FITTING	JP.M.ELK-RKR-PLS-001
21	TERMINAL	M.ELK-KLM-PRS-004
22	NO:2 25 MM TERMINAL	M.ELK-KLM-RKL-4*4-SRY
23	TERMINAL	M.ELK-KLM-PRS-005
24	MECHANISM SHAFT Ø30-755MM	YTL-KNX.PG9-KS-0015
25	MECHANISM BUSH	YTL-KNX.PG7-KS-0031
26	M10*35 FOOT	JP.M.AKS-AYK-PLS-002

# ELECTRIC RANGES

## G SPARE PART LIST-EXPLODING DRAWING



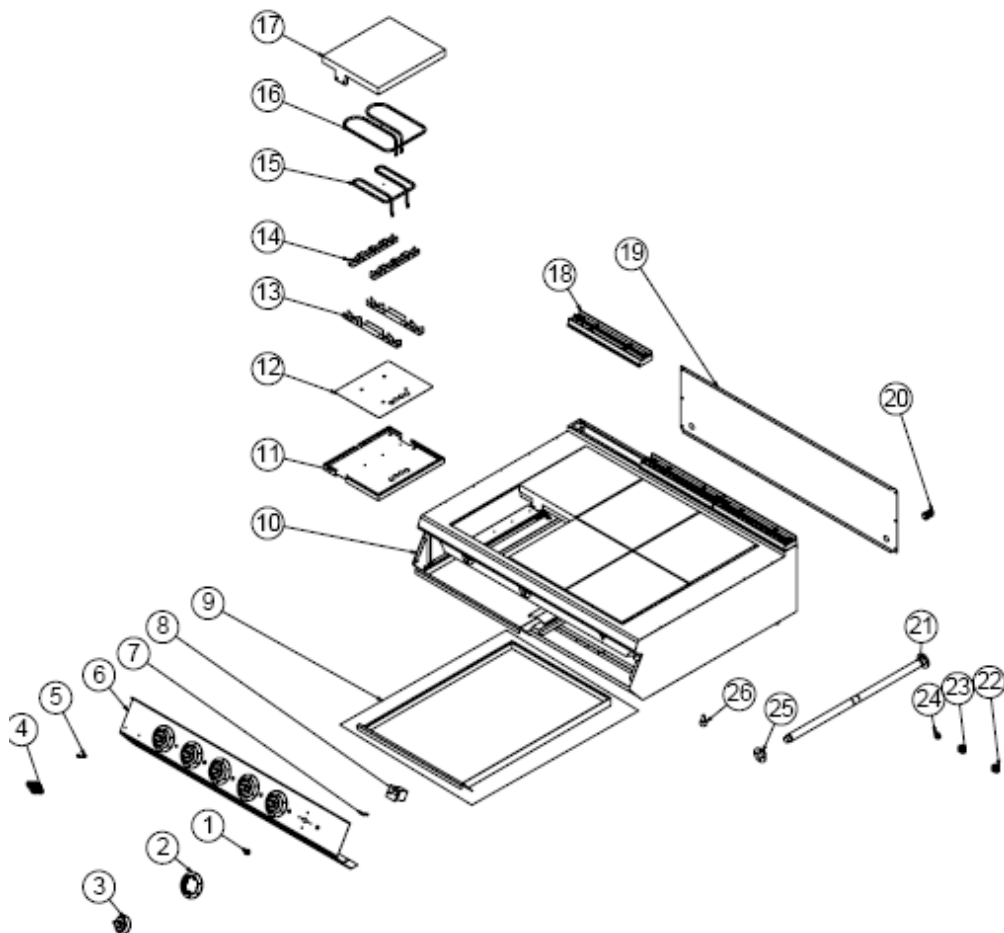
EMP.PLS.9KE020-P

**G SPARE PART LIST-EXPLODING DRAWING**

<b>PRODUCT CODE : EMP.PLS.9KE020-P</b>		
<b>NO</b>	<b>PRODUCT NAME</b>	<b>P.CODE</b>
1	BUTTON SOCKET	JP.M.AKS-DGM-SKT-003
2	0-1-2-3 BUTTON BUMPER	M.AKS-DGM-EMP-042
3	BUTTON	M.AKS-DGM-EMP-024
4	TICKET	M.AKS-OZL-MTL-006
5	SIGNAL LAMP	M.ELK-LMB-SNY-002
6	FRONT PANEL	YSC-KNX.PG9-LZ-1024
7	M4 FRAME SPRING	M.YAY-PG-004
8	Y90C393MK25 3*25 - SWITCH	JP.M.ELK-SLT-PKO-007
9	DRAWER	ARA-KNX.PG9-0006
10	CHASSIS	-
11	INSULATION SHEET	YSC-KNX.PG9-LZ-1026
12	COVER SHEET	YSC-KNX.PG9-LZ-1025
13	RESISTANCE HOLDING SHEET-2	YSC-KNX.PG7-LZ-1062
14	RESISTANCE HOLDING SHEET-1	YSC-KNX.PG7-LZ-1061
15	380V-1000W RESISTANCE	M.ELK-RZS-BRU-IZG-017
16	380V-1800W RESISTANCE	M.ELK-RZS-BRU-IZG-016
17	RESISTANCE HOUSING	M.AKS-DKM-KZN-029
18	40 CM X 7 CM CHIMNEY	JP.M.AKS-DKM-KZN-013
19	BACK SHEET METAL	YSC-KNX.PG7-PN-0398
20	PG-16 CABLE FITTING	JP.M.ELK-RKR-PLS-001
21	MECHANISM SHAFT Ø30-755MM	YTL-KNX.PG9-KS-0015
22	NO:2 25 MM TERMINAL	M.ELK-KLM-RKL-4*4-SRY
23	TERMINAL	M.ELK-KLM-PRS-004
24	TERMINAL	M.ELK-KLM-PRS-005
25	MECHANISM BUSH	YTL-KNX.PG7-KS-0031
26	M10*35 FOOT	JP.M.AKS-AYK-PLS-002

# ELECTRIC RANGES

## G SPARE PART LIST-EXPLODING DRAWING



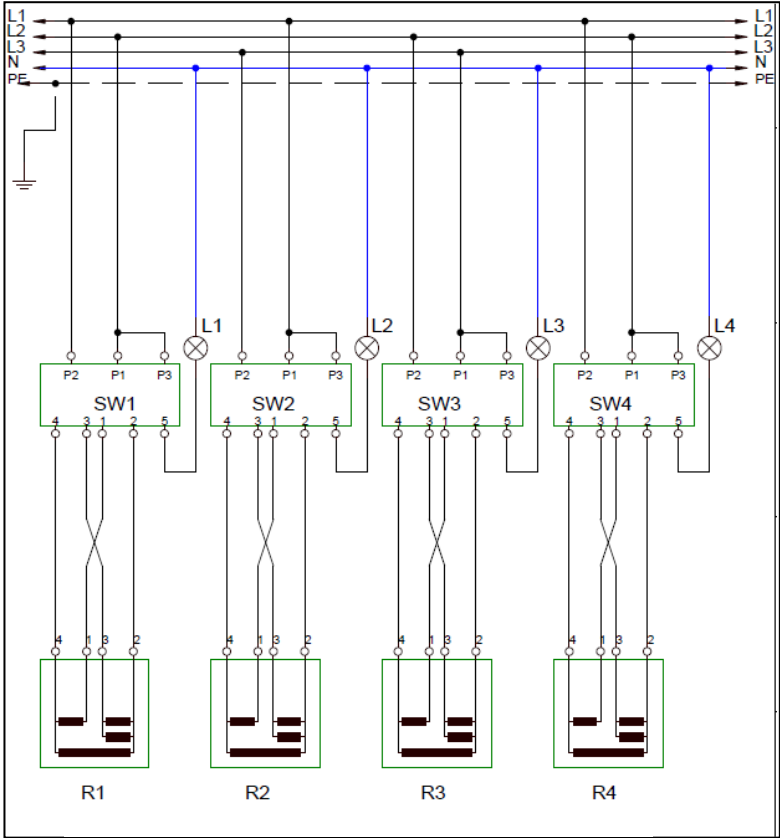
EMP.PLS.9KE030-P

## G SPARE PART LIST-EXPLODING DRAWING

PRODUCT CODE : EMP.PLS.9KE030-P		
NO	PRODUCT NAME	P.CODE
1	BUTTON SOCKET	JP.M.AKS-DGM-SKT-003
2	0-1-2-3 BUTTON BUMPER	M.AKS-DGM-EMP-042
3	BUTTON	M.AKS-DGM-EMP-024
4	TICKET	M.AKS-OZL-MTL-006
5	SIGNAL LAMP	M.ELK-LMB-SNY-002
6	FRONT PANEL LEATHER	YSC-KNX.PG9-LZ-1048
7	M4 FRAME SPRING	M.YAY-PG-004
8	Y90C393MK25 3*25 - SWITCH	JP.M.ELK-SLT-PKO-007
9	DRAWER	ARA-KNX.PG9-0009
10	CHASSIS	-
11	INSULATION SHEET	YSC-KNX.PG9-LZ-1026
12	COVER SHEET	YSC-KNX.PG9-LZ-1025
13	RESISTANCE HOLDING SHEET-2	YSC-KNX.PG7-LZ-1062
14	RESISTANCE HOLDING SHEET-1	YSC-KNX.PG7-LZ-1061
15	380V-1000W RESISTANCE	M.ELK-RZS-BRU-IZG-017
16	380V-1800W RESISTANCE	M.ELK-RZS-BRU-IZG-016
17	RESISTANCE HOUSING	M.AKS-DKM-KZN-029
18	40 CM X 7 CM CHIMNEY	JP.M.AKS-DKM-KZN-013
19	BACK SHEET METAL	YSC-KNX.PG7-LZ-0435
20	PG-16 CABLE FITTING	JP.M.ELK-RKR-PLS-001
21	MECHANISM SHAFT Ø30-755MM	YTL-KNX.PG9-KS-0015
22	TERMINAL	M.ELK-KLM-PRS-004
23	TERMINAL	M.ELK-KLM-PRS-005
24	NO:2 25 MM TERMINAL	M.ELK-KLM-RKL-4*4-SRY
25	MECHANISM BUSH	YTL-KNX.PG7-KS-0031
26	M10*35 FOOT	JP.M.AKS-AYK-PLS-002



## H ELECTRIC CIRCUIT SCHEMA



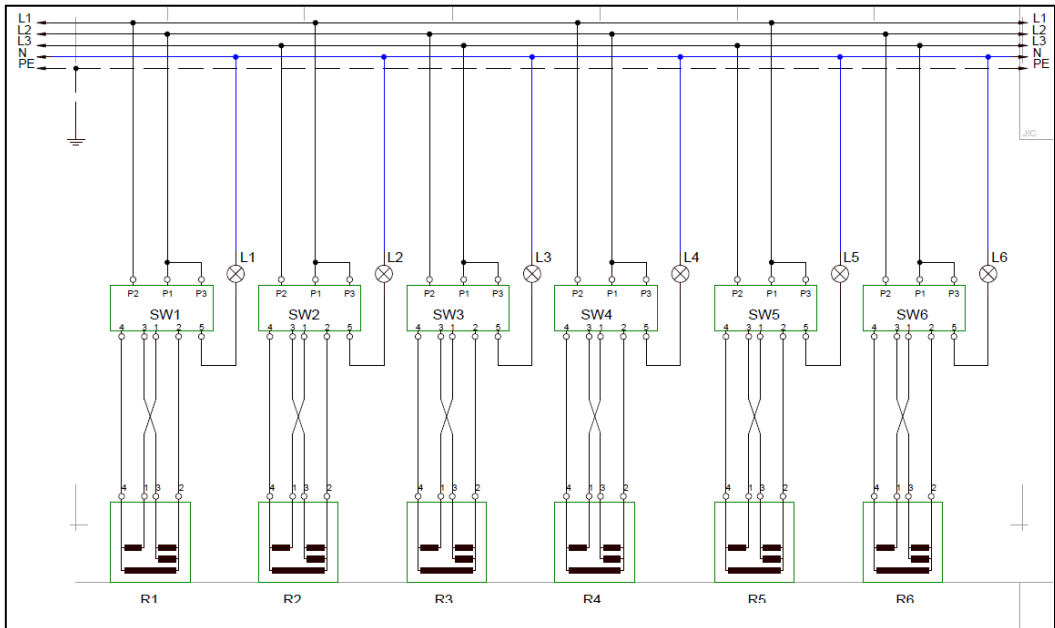
EMP.PLS.9KE020

SW1.SW2.SW3.SW4	R1.R2.R3.R4	L1.L2.L3.L4
6 Gradual Switch	Plate Resistance	Signal lamp



# ELECTRIC RANGES

## H ELECTRIC CIRCUIT SCHEMA

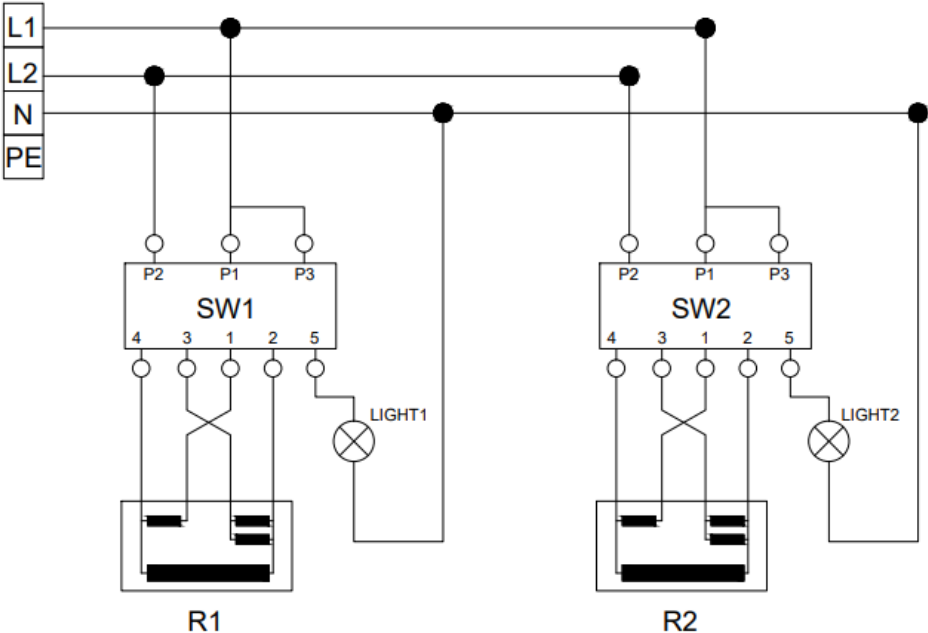


EMP.PLS.9KE030

SW1.SW2. SW3.SW4	SW5.SW6	L1.L2.L3.L4	L5.L6	R1.R2.R3.R4	R5.R6
6 Gradual Switch	6 Gradual Switch	Signal lamp	Signal lamp	Plate Resistance	Plate Resistance

## H ELECTRIC CIRCUIT SCHEMA

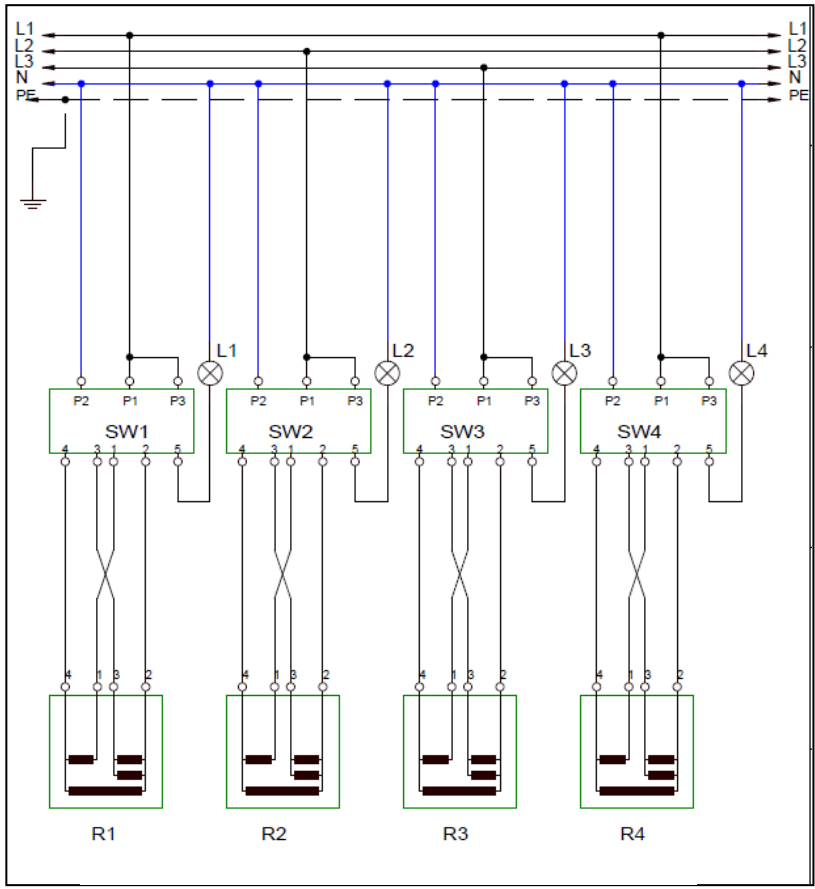
208V SINGLE PHASE



EMP.PLS.7KE010

# ELECTRIC RANGES

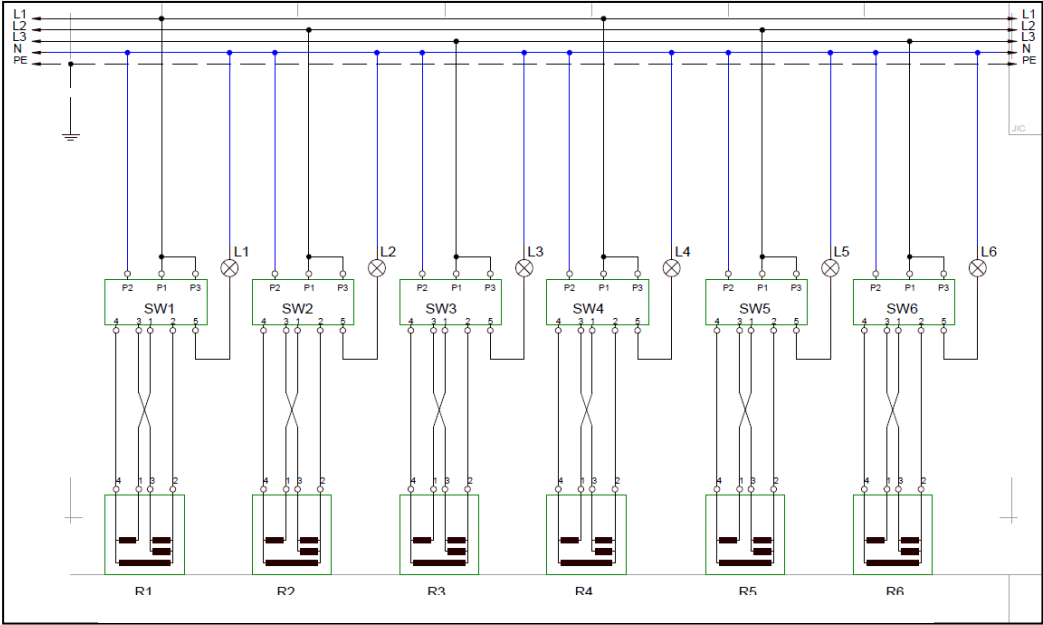
## H ELECTRIC CIRCUIT SCHEMA



EMP.PLS.7KE020

SW1.SW2.SW3.SW4	R1.R2.R3.R4	L1.L2.L3.L4
6 Gradual Switch	Plate Resistance	Switch Signal lamp

## H ELECTRIC CIRCUIT SCHEMA



EMP.PLS.7KE030

R1.R2.R3.R4	R5.R6	SW1.SW2. SW3.SW4	SW5.SW6	L1.L2.L3.L4	L5.L6
Plate Resistance	Pleyt rezistans	6 Gradual Switch	6 Gradual Switch	Signal lamp	Signal lamp