



ELECTRIC BAIN MARIES

CONTENTS

| | | |
|----------|---|----------------|
| A | GENERAL INFORMATION | Page 2 |
| A1 | PRODUCT DESCRIPTION | Page 3 |
| A2 | TECHNICAL INFORMATION | Page 3 |
| A3 | TRANSPORTATION | Page 4 |
| A4 | UNPACKING | Page 4 |
| B | INSTALLATION | Page 4 |
| C | SAFETY INSTRUCTIONS | Page 5 |
| D | OPERATION | Page 6 |
| E | CLEANING & MAINTENANCE..... | Page 7 |
| F | TROUBLESHOOTING | Page 8 |
| G | SPARE PART LIST- EXPLODING DRAWING | Page 9 |
| H | ELECTRIC CIRCUIT SCHEMA | Page 21 |

A GENERAL INFORMATIONS

Before installing the appliance, read operation and maintenance instructions carefully. Wrong installation and part changing may damage the product or may cause injury on people. These are not in our company's responsibility to damage the appliance intentionally, negligence, detriments because of disobeying instructions and regulations, wrong connections. Unauthorized intervention to appliance invalidates the warranty.

1. This instruction manual should be kept in a safe place for future reference.
2. **Installation should be made in accordance with ordinances and security rules of that country by a qualified service personnel.**
3. This appliance has to be used by trained person.
4. Please turn off the appliance immediately in the event of malfunction or failure. The appliance should be repaired only by authorized service personnel. Please demand original spare part.

ELECTRIC BAIN MARIES

A1 PRODUCT DESCRIPTION

*The Professional Electric Bain Maries ,that provides high efficiency has been designed to be used in industrial kitchens.

| Product Code | Dimensions (mm) | Weight (kg) | Packaging Dimensions (mm) |
|-----------------------|-----------------|-------------|---------------------------|
| EMP.6SE010 | 400x635x285 | 19 | 480x760x600 |
| EMP.6SE020 | 600x635x285 | 26 | 700x760x600 |
| EMP.PLS.7SE010 | 400X730X300 | 24 | 480x860x620 |
| EMP.PLS.7SE020 | 800X730X300 | 40 | 900x860x620 |
| EMP.PLS.9SE010 | 400x900x800 | 43 | 900x1000x1050 |
| EMP.PLS.9SE020 | 800x900x800 | 50 | 480x1000x1050 |

A2 TECHNICAL INFORMATION

| Product Code | Electric Inlet | Cable (mm ²) | Power (KW) | Capacity |
|-----------------------|----------------|--------------------------|------------|------------|
| EMP.6SE010 | 230 V. AC N PE | 3X1,5 | 1.5 | 1 x GN 2/3 |
| EMP.6SE0020 | 230 V. AC N PE | 3X2,5 | 3 | 1 x GN 1/1 |
| EMP.PLS.7SE010 | 230 V. AC N PE | 3X2,5 | 1.5 | 1 x GN 1/1 |
| EMP.PLS.7SE020 | 230 V. AC N PE | 3X2,5 | 3 | 2 x GN 1/1 |
| EMP.PLS.9SE010 | 230 V. AC N PE | 3x2,5 | 2.5 | 1 x GN 1/1 |
| EMP.PLS.9SE020 | 230 V. AC N PE | 3x2,5 | 4.4 | 2 x GN 1/1 |

A3 TRANSPORTATION

* This appliance can not be moved by hand from area to area. Therefore Use a hauling truck (forklift or pallet jack) to move the appliance. (The lifting arms of the of forklift or pallet jack must reach up to more than half part of t appliance underneath.

A4 UNPACKING

* Please unpack the package according to the security codes and ordinances of current country and get rid from the pack.Parts which contacts with food are produced by stainless steel.All plastic parts are marked by material's symbol.

*Please check that all the parts of appliance had come completely and if they are damaged or not during the shipping.


B INSTALLATION

*Please place the product to straight and sturdy ground,please take necessary steps against possibility of overturn.

*Technician who will serve for installation and service for the appliance must be professional on this subject and must have installation and service licenses by the company.

*Connection to Electric Power Supply must be done by authorized person.

*Please be sure that the voltage connected to appliance must be equal with the voltage which is on appliance's label.

 This appliance must be connected to an earthed outlet in accordance with safety rules and standards.










* Appliance's earthing must be connected to earthing line on panel which is nearest to electric installation.

* Connection to the main fuse and leak current fuse must be done in accordance with the current regulations.

* If the location where Electric Bain Maries placed is covered with nonflammable heat insulation material,the distance between them must be 5 cm.Otherwise it should be at least 20 cm.The appliance shouldn't be operated under chimney hood.

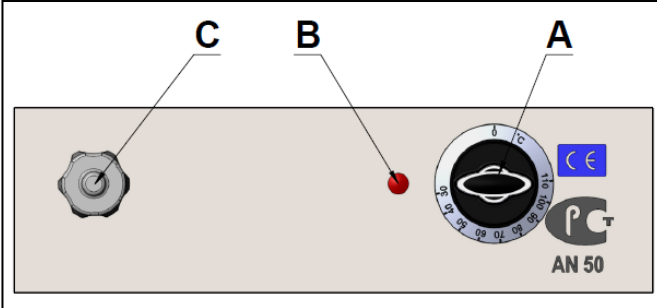
ELECTRIC BAIN MARIES

C SAFETY INSTRUCTIONS

-  * Do not use the appliance in insufficient lighted place.
-  * Do not touch the moving attachments while the appliance operates.
-  * Do not install the appliance in the presence of flammable or explosive materials.
-  * Do not operate the appliance when the machine is empty.
-  * Do not load so less or more than appliance's capacity.
-  * Do not attempt to use the appliance without suitable protective equipments.
-  * Because of any reason if there is a fire or flame flare where the appliance is used, turn off all gas valves and electric contactor switch quickly and use fire extinguisher. Never use water to extinguish the fire.
-  * All the damages because of not having earthing connection will not be on warranty..
-  * Do not turn on water drainage tap while the appliance is operating. Otherwise it may cause burn.

D OPERATION

*Control Panel;



A : Heat setting button

B : Indicator lamp

C: Water Valve

* Operating;

- Before operating the Bain Maire appliance place in to the tank.
- Be sure that the water drainage tap is off (Pull the ball valve handle that located in the undercounter cabinet.)
- (In the reservoir Water should be at a level not to exceed the lower base of the Gastronom plate)
- Plug in the appliance.
- In order to operate the appliance switch the thermostat to desired heat
- When you switch the thermostat, the heaters start to work and and indicator lamps on it signal as it works.
- When the water temperature reaches to indicator temperature,the heaters are disabled.When the water temperature is lower than indicator temperature ,the thermostat steps in again.
- Put the foods that are wanted to be kept hot into the tank during the heating of water.
- Cihaz After operation is completed switch to (0) position and unplug the appliance.
- Before drainage of water leave the water to be cooled.
- In order to drain the water, Pull the ball valve handle to down.
- After drainage process, switch to off position the valve again.

ELECTRIC BAIN MARIES

E CLEANING & MAINTENANCE

- **CLEANING AND MAINTENANCE AFTER EVERY USE**

- Always turn off the appliance and disconnect from the power supply before cleaning.
- Clean the outer surface of the appliance with a wet cloth and chrome shiner.
- Do not use abrasive cleaning chemicals as these can leave harmful residues.
- Do not clean the appliance by spraying water directly, otherwise electric motor may get damaged.
- While cleaning the inside of the appliance, take off the tank.

- **PERIODIC CLEANING AND MAINTENANCE**

- Maintenance should be done by qualified person.
- Get the periodic maintenance of the appliance once in every 15 days.
- If the used water is limy, check the resistances in periodic times and clean the limes.
- Maintenance of the appliance's contactor should be done by compressed air according to frequency of use.
- Check if there is an accumulation at drainage tap in periodic times. If there is, it should be fixed.

F TROUBLESHOOTING

THE APPLIANCE DOESN'T OPERATE

1. Check if the appliance is plugged in.
2. Check the electrical connections and voltage.
3. Check the resistances.

FOODS ARE NOT KEPT WARM

1. Check the level of water.
2. Check the thermostat switch. If the temperature of water doesn't reach desired temperature, contact with authorized service.

THE APPLIANCE STOPPED

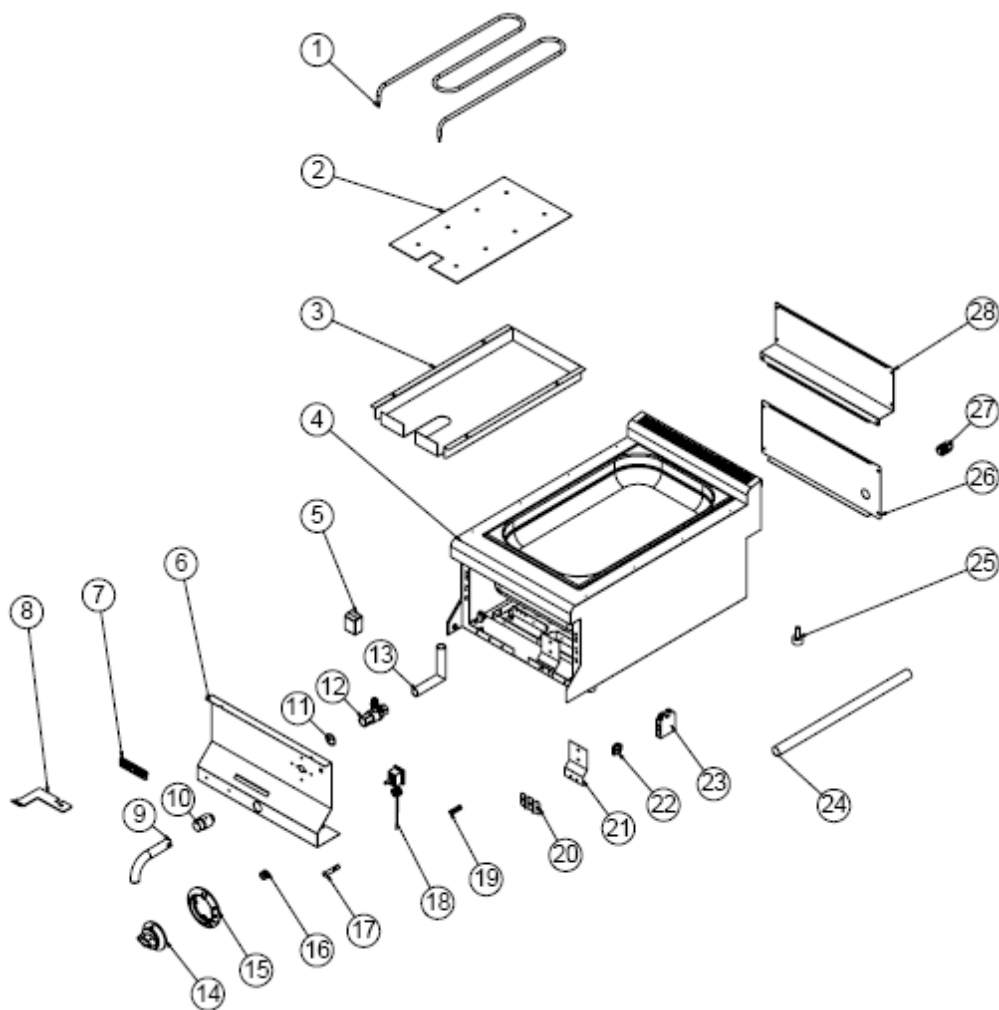
1. The appliance can stop due to low voltage. In this situation check the voltage.

- If keeping the foods hot is not done at suitable quality
- If any function of security doesn't work
 - Do not use the appliance.

***If these problems are still going on, contact with our authorized services.**

ELECTRIC BAIN MARIES

G SPARE PART LIST-EXPLODING DRAWING



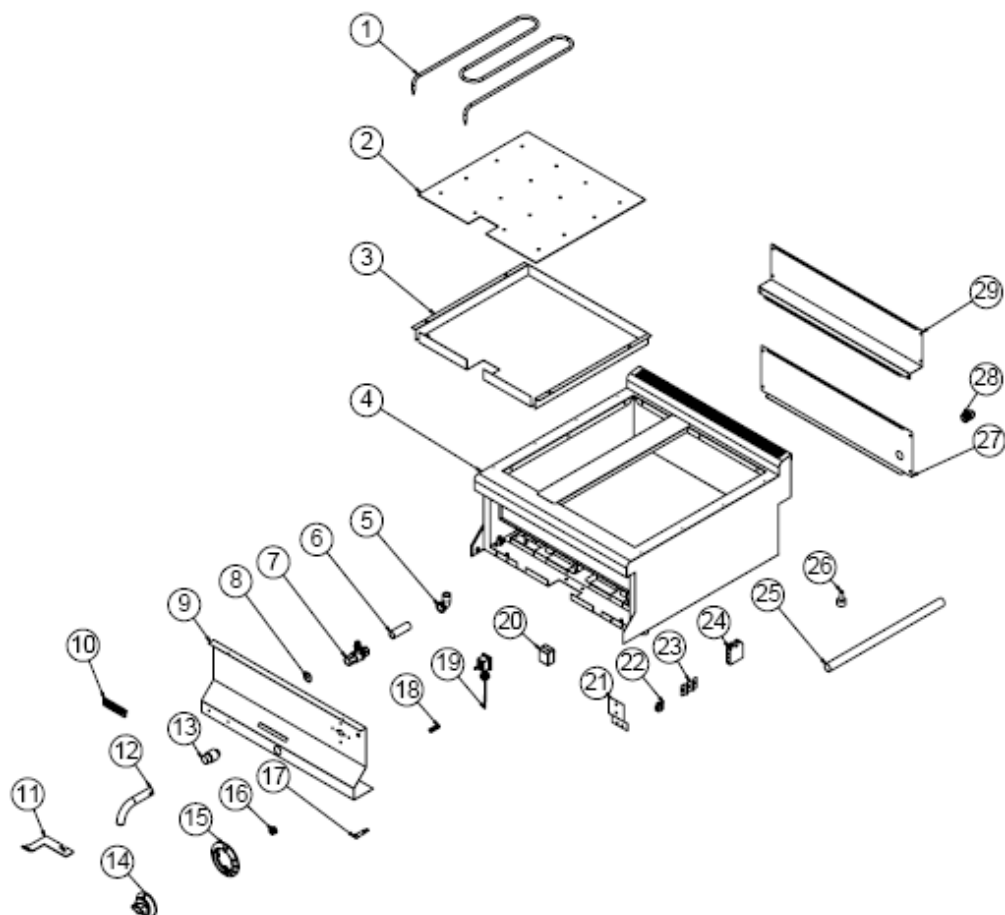
EMP.6SE010

G SPARE PART LIST-EXPLODING DRAWING

| PRODUCT CODE: EMP.6SE010 | | |
|--------------------------|-------------------------------|--------------------------|
| NO | PRODUCT NAME | P.CODE |
| 1 | 1.5 KW 230 V RESISTANCE | JP.M.ELK-RZS-BRU-BEN-001 |
| 2 | INSULATION BOTTOM SHEET | YSC-KNX.PG7-PN-0055 |
| 3 | INSULATION TOP SHEET | YSC-KNX.PG7-PN-0065 |
| 4 | CHASSIS | - |
| 5 | 126 °C LIMITOR | JP.M.ELK-MEK-LMT-003 |
| 6 | FRONT PANEL | YSC-KNX.SNC-LZ-0169 |
| 7 | TICKET | JP.M.AKS-OZL-MTL-001 |
| 8 | VALVE ARM | YSC-KNX.SNC-LZ-0052 |
| 9 | DRAIN PIPE | YBR-KNX.SNC-KS-0010 |
| 10 | DRAIN BUSH Ø30 MM | YTL-KNX.SNC-KS-0009 |
| 11 | ORING 3,5 * Ø 21 | M.CNT-ORG-NP4-20-001 |
| 12 | VALVE 1/2 75 MM | M.MEK-TES-INV-001 |
| 13 | DRAIN PIPE | YBR-KNX.SNC-KS-0007 |
| 14 | BUTTON | M.AKS-DGM-EMP-024 |
| 15 | BUTTON | JP.M.AKS-DGM-EMP-022 |
| 16 | BUTTON SOCKET 6 MM | M.AKS-DGM-SKT-002 |
| 17 | SIGNAL LAMP | M.ELK-LMB-SNY-002 |
| 18 | 30-110 °C THERMOSTAT | JP.M.ELK-MEK-TRM1-014 |
| 19 | M4 FRAME SPRING | M.YAY-PG-004 |
| 20 | THERMOCULP FIXING SHEET METAL | YSC-KNX.PG7-PN-0708 |
| 21 | TERMINAL SHEET METAL | YSC-KNX.SNC-PN-0002 |
| 22 | NO:2 25 MM TERMINAL | M.ELK-KLM-RKL-4*4-SRY |
| 23 | TERMINAL | M.ELK-KLM-PRS-001 |
| 24 | ELECTRIC PIPE 300 MM | YBR-KNX.SNC-KS-0005 |
| 25 | M10*35 FOOT | JP.M.AKS-AYK-PLS-002 |
| 26 | REAR BOTTOM SHEET | YSC-KNX.SNC-PN-0106 |
| 27 | PG-16 CABLE FITTING | JP.M.ELK-RKR-PLS-001 |
| 28 | REAR TOP SHEET | YSC-KNX.SNC-PN-0105 |

ELECTRIC BAIN MARIES

G SPARE PART LIST-EXPLODING DRAWING



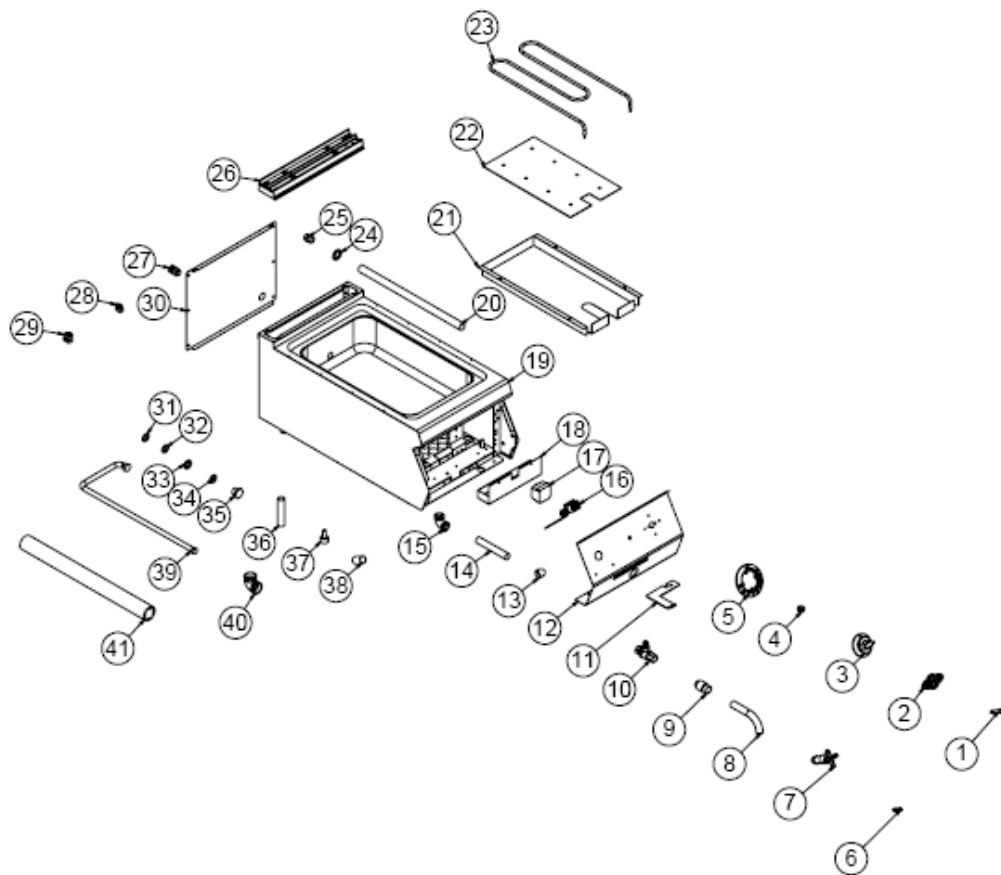
EMP.6SE020

G SPARE PART LIST-EXPLODING DRAWING

| PRODUCT CODE: EMP.6SE020 | | |
|--------------------------|-------------------------------|--------------------------|
| NO | PRODUCT NAME | P.CODE |
| 1 | 1.5 KW 230 V RESISTANCE | JP.M.ELK-RZS-BRU-BEN-001 |
| 2 | INSULATION BOTTOM SHEET | YSC-KNX.SNC-PN-0025 |
| 3 | INSULATION TOP SHEET | YSC-KNX.SNC-PN-0049 |
| 4 | CHASSIS | - |
| 5 | 1/2-1/2 ELBOW | M.GAZ-TES-INV-001 |
| 6 | DRAIN PIPE | YBR-KNX.SNC-KS-0030 |
| 7 | VALVE 1/2 75 MM | M.MEK-TES-INV-001 |
| 8 | ORING 3,5 * Ø 21 | M.CNT-ORG-NP4-20-001 |
| 9 | FRONT PANEL | YSC-KNX.SNC-LZ-0170 |
| 10 | TICKET | JP.M.AKS-OZL-MTL-001 |
| 11 | VALVE ARM | YSC-KNX.SNC-LZ-0052 |
| 12 | DRAIN PIPE | YBR-KNX.SNC-KS-0010 |
| 13 | DRAIN BUSH Ø30 MM | YTL-KNX.SNC-KS-0009 |
| 14 | BUTTON | M.AKS-DGM-EMP-024 |
| 15 | BUTTON | JP.M.AKS-DGM-EMP-022 |
| 16 | BUTTON SOCKET 6 MM | M.AKS-DGM-SKT-002 |
| 17 | SIGNAL LAMP | M.ELK-LMB-SNY-002 |
| 18 | M4 FRAME SPRING | M.YAY-PG-004 |
| 19 | 30-110 °C THERMOSTAT | JP.M.ELK-MEK-TRM1-014 |
| 20 | 126 °C LIMITOR | JP.M.ELK-MEK-LMT-003 |
| 21 | TERMINAL SHEET METAL | YSC-KNX.SNC-PN-0002 |
| 22 | NO:2 25 MM TERMINAL | M.ELK-KLM-RKL-4*4-SRY |
| 23 | THERMOCULP FIXING SHEET METAL | YSC-KNX.PG7-PN-0708 |
| 24 | TERMINAL | M.ELK-KLM-PRS-001 |
| 25 | ELECTRIC PIPE 300 MM | YBR-KNX.SNC-KS-0005 |
| 26 | M10*35 FOOT | JP.M.AKS-AYK-PLS-002 |
| 27 | REAR BOTTOM SHEET | YSC-KNX.SNC-PN-0111 |
| 28 | PG-16 CABLE FITTING | JP.M.ELK-RKR-PLS-001 |
| 29 | REAR TOP SHEET | YSC-KNX.SNC-PN-0110 |

ELECTRIC BAIN MARIES

G SPARE PART LIST-EXPLODING DRAWING



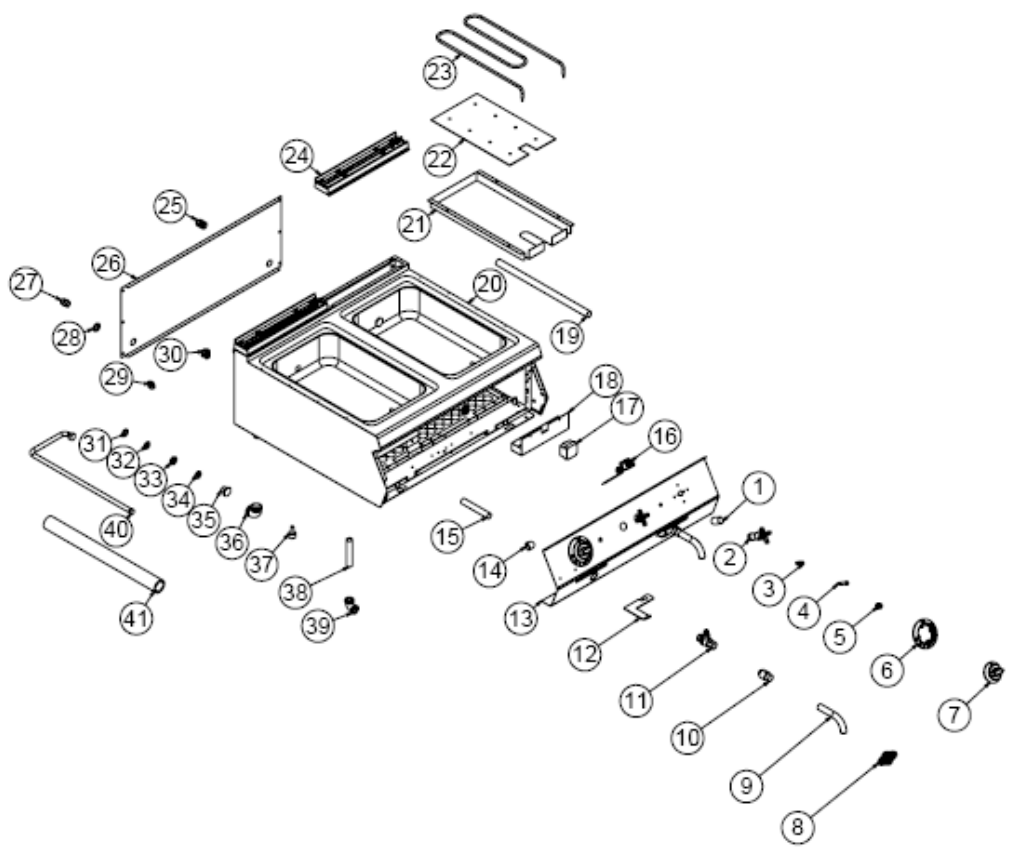
EMP.PLS.7SE010

G SPARE PART LIST-EXPLODING DRAWING

| PRODUCT CODE: EMP.PLS.7SE010 | | |
|------------------------------|-----------------------------|--------------------------|
| NO | PRODUCT NAME | P.CODE |
| 1 | SIGNAL LAMP | M.ELK-LMB-SNY-002 |
| 2 | TICKET | M.AKS-OZL-MTL-006 |
| 3 | BUTTON | M.AKS-DGM-EMP-024 |
| 4 | BUTTON SOCKET 6 MM | M.AKS-DGM-SKT-002 |
| 5 | BUTTON | JP.M.AKS-DGM-EMP-022 |
| 6 | M4 FRAME SPRING | M.YAY-PG-004 |
| 7 | FAUCET | M.MEK-TES-MSL-003 |
| 8 | DRAIN PIPE | YBR-KNX.SNC-KS-0010 |
| 9 | DRAIN BUSH Ø30 MM | YTL-KNX.SNC-KS-0009 |
| 10 | VALVE 1/2 75 MM | M.MEK-TES-INV-001 |
| 11 | VALVE ARM | YSC-KNX.PG7-LZ-1043 |
| 12 | FRONT PANEL | YSC-KNX.PG7-LZ-0451 |
| 13 | 3/8 ELBOW | M.GAZ-TES-SRI-014 |
| 14 | DRAIN PIPE | YBR-KNX.SNC-KS-0019 |
| 15 | BRACKET | JP.M.GAZ-TES-GLV-002 |
| 16 | 30-110 °C THERMOSTAT | JP.M.ELK-MEK-TRM1-014 |
| 17 | 126 °C LIMITOR | JP.M.ELK-MEK-LMT-003 |
| 18 | HEATING COVER SHEET | YSC-KNX.PG9-PN-0006 |
| 19 | CHASSIS | - |
| 20 | 1/2-1/2 60 CM GAS FLEX PIPE | M.GAZ-TES-SPR-006 |
| 21 | INSULATION TOP SHEET | YSC-KNX.PG7-PN-0065 |
| 22 | INSULATION BOTTOM SHEET | YSC-KNX.PG7-PN-0055 |
| 23 | 1.5 KW 230 V RESISTANCE | JP.M.ELK-RZS-BRU-BEN-001 |
| 24 | STAMP | YSC-KNX.PG7-LZ-1179 |
| 25 | CONNECTION 1/2 | JP.M.MEK-TES-SRI-014 |
| 26 | 40 CM X 7 CM CHIMNEY | JP.M.AKS-DKM-KZN-013 |
| 27 | PG-16 CABLE FITTING | JP.M.ELK-RKR-PLS-001 |
| 28 | NO:2 25 MM TERMINAL | M.ELK-KLM-RKL-4*4-SRY |
| 29 | TERMINAL | M.ELK-KLM-PRS-001 |
| 30 | BACK COVER SHEET | JP.YSC-KNX.PG7-PN-0391 |
| 31 | ORING 3.5 * Ø 21 | M.CNT-ORG-NP4-20-001 |
| 32 | ORING 19*2MM | M.CNT-ORG-NP4-26 |
| 33 | NUT | JP.M.MEK-TES-SRI-015 |
| 34 | GASKET | M.CNT-PLS-KLN-002 |
| 35 | WATER FILLING PART | YTL-KNX.PG7-KS-0016 |
| 36 | PIPE | YBR-KNX.SNC-KS-0020 |
| 37 | M10*35 FOOT | JP.M.AKS-AYK-PLS-002 |
| 38 | MASON 1/2 | M.MEK-TES-INX-002 |
| 39 | 1/2-3/8 - 100 CM GAS FLEX | M.GAZ-TES-SPR-008 |
| 40 | 1/2-1/2 ELBOW | M.GAZ-TES-INX-001 |
| 41 | CABLE PIPE 450 MM | YBR-KNX.PG9-KS-0002 |

ELECTRIC BAIN MARIES

G SPARE PART LIST-EXPLODING DRAWING



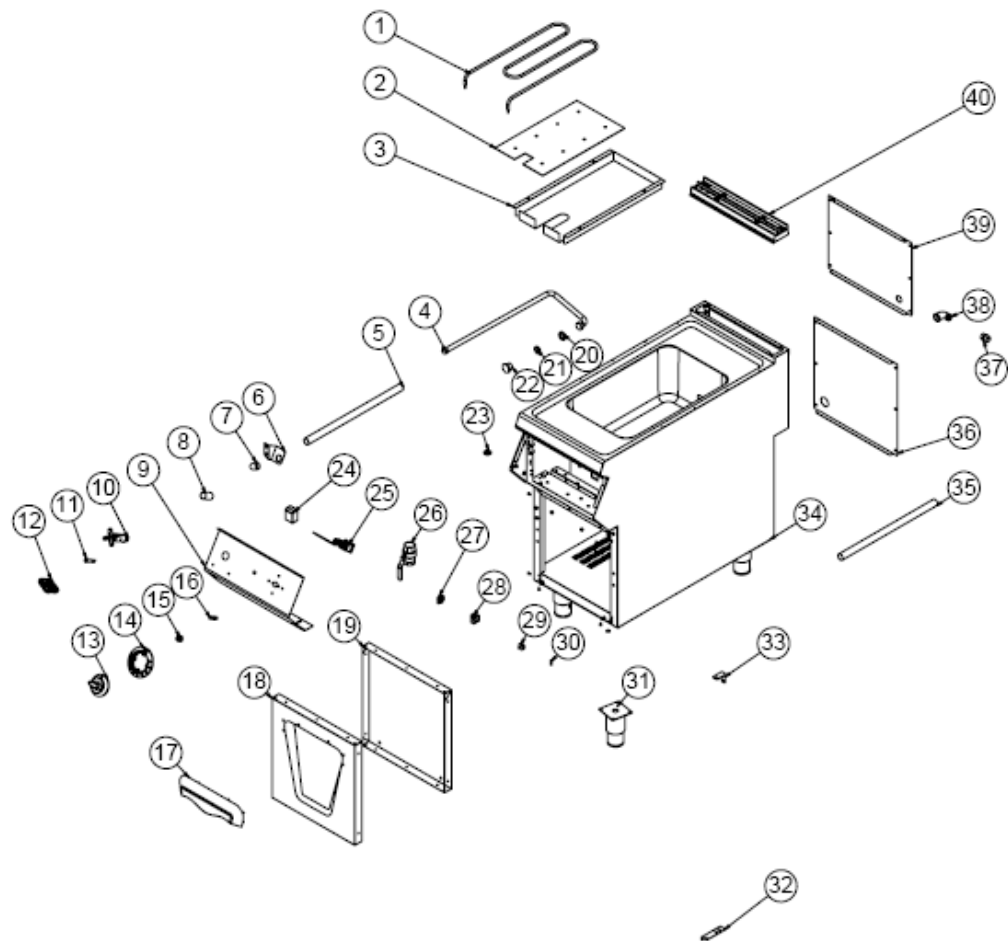
EMP.PLS.7SE020

G SPARE PART LIST-EXPLODING DRAWING

| PRODUCT CODE: EMP.PLS.7SE020 | | |
|------------------------------|-----------------------------|--------------------------|
| NO | PRODUCT NAME | P.CODE |
| 1 | MASON 1/2 | M.MEK-TES-INX-002 |
| 2 | FAUCET | M.MEK-TES-MSL-003 |
| 3 | M4 FRAME SPRING | M.YAY-PG-004 |
| 4 | SIGNAL LAMP | M.ELK-LMB-SNY-002 |
| 5 | BUTTON SOCKET 6 MM | M.AKS-DGM-SKT-002 |
| 6 | BUTTON | JP.M.AKS-DGM-EMP-022 |
| 7 | BUTTON | M.AKS-DGM-EMP-024 |
| 8 | TICKET | M.AKS-OZL-MTL-006 |
| 9 | DRAIN PIPE | YBR-KNX.SNC-KS-0010 |
| 10 | DRAIN BUSH Ø30 MM | YTL-KNX.SNC-KS-0009 |
| 11 | VALVE 1/2 75 MM | M.MEK-TES-INV-001 |
| 12 | VALVE ARM | YSC-KNX.PG7-LZ-1043 |
| 13 | FRONT PANEL | YSC-KNX.PG7-LZ-0453 |
| 14 | 3/8 ELBOW | M.GAZ-TES-SRI-014 |
| 15 | DRAIN PIPE | YBR-KNX.SNC-KS-0019 |
| 16 | 30-110 °C THERMOSTAT | JP.M.ELK-MEK-TRM1-014 |
| 17 | 126 °C LIMITOR | JP.M.ELK-MEK-LMT-003 |
| 18 | HEATING COVER SHEET | YSC-KNX.PG9-PN-0006 |
| 19 | 1/2-1/2 60 CM GAS FLEX PIPE | M.GAZ-TES-SPR-006 |
| 20 | CHASSIS | - |
| 21 | INSULATION TOP SHEET | YSC-KNX.PG7-PN-0065 |
| 22 | INSULATION BOTTOM SHEET | YSC-KNX.PG7-PN-0055 |
| 23 | 1.5 KW 230 V RESISTANCE | JP.M.ELK-RZS-BRU-BEN-001 |
| 24 | 40 CM X 7 CM CHIMNEY | JP.M.AKS-DKM-KZN-013 |
| 25 | PG-16 CABLE FITTING | JP.M.ELK-RKR-PLS-001 |
| 26 | BACK SHEET METAL | YSC-KNX.PG7-PN-0398 |
| 27 | CONNECTION 1/2 | JP.M.MEK-TES-SRI-014 |
| 28 | STAMP | YSC-KNX.SNC-LZ-0292 |
| 29 | NO:2 25 MM TERMINAL | M.ELK-KLM-RKL-4*4-SRY |
| 30 | TERMINAL | M.ELK-KLM-PRS-001 |
| 31 | ORING 3,5 * Ø 21 | M.CNT-ORG-NP4-20-001 |
| 32 | ORING 19*2MM | M.CNT-ORG-NP4-26 |
| 33 | NUT | JP.M.MEK-TES-SRI-015 |
| 34 | GASKET | M.CNT-PLS-KLN-002 |
| 35 | WATER FILLING PART | YTL-KNX.PG7-KS-0016 |
| 36 | 1/2-1/2 ELBOW | M.GAZ-TES-INX-001 |
| 37 | M10*35 FOOT | JP.M.AKS-AYK-PLS-002 |
| 38 | PIPE | YBR-KNX.SNC-KS-0020 |
| 39 | BRACKET | JP.M.GAZ-TES-GLV-002 |
| 40 | 1/2-3/8 - 100 CM GAS FLEX | M.GAZ-TES-SPR-008 |
| 41 | CABLE PIPE 450 MM | YBR-KNX.PG9-KS-0002 |

ELECTRIC BAIN MARIES

G SPARE PART LIST-EXPLODING DRAWING



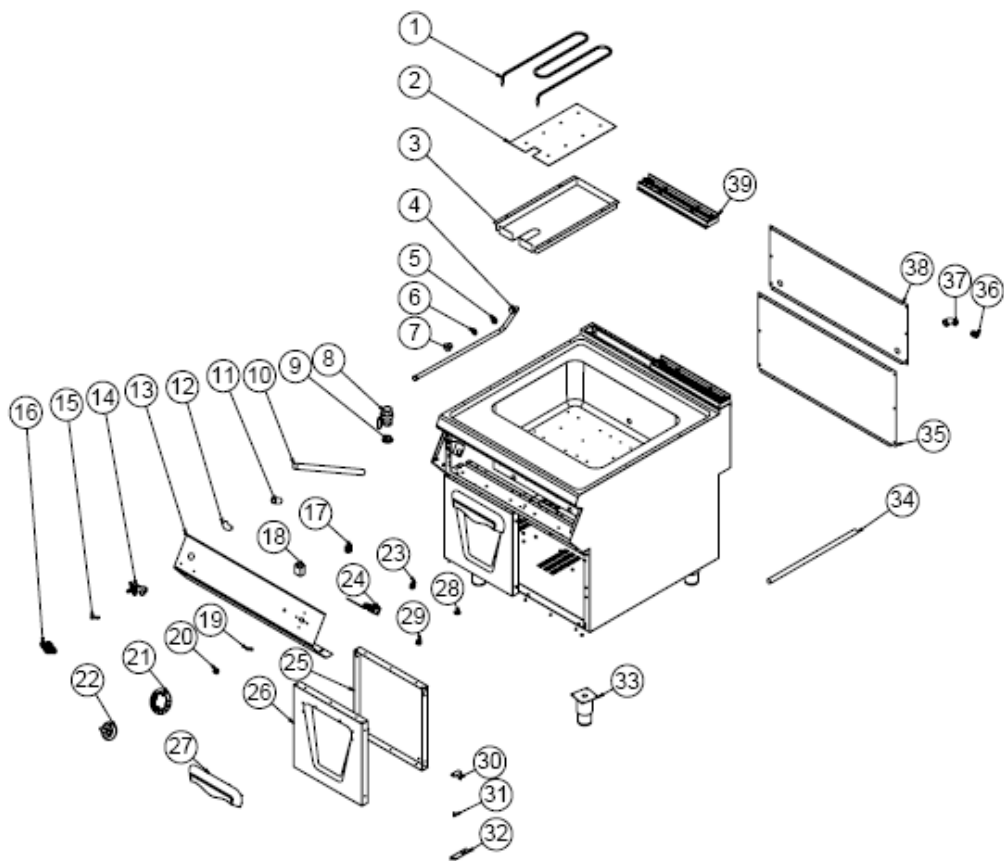
EMP.PLS.9SE010

G SPARE PART LIST-EXPLODING DRAWING

| PRODUCT CODE: EMP.PLS.9SE010 | | |
|------------------------------|---------------------------|------------------------|
| NO | PRODUCT NAME | P.CODE |
| 1 | RESISTANCE 2.2KW-230V | M.ELK-RZS-BRU-BEN-002 |
| 2 | INSULATION BOTTOM SHEET | YSC-KNX.PG7-PN-0055 |
| 3 | INSULATION TOP SHEET | YSC-KNX.PG7-PN-0065 |
| 4 | 1/2-3/8 - 100 CM GAS FLEX | M.GAZ-TES-SPR-008 |
| 5 | 1/2 -1/2 80 CM GAS FLEX | M.GAZ-TES-SPR-009 |
| 6 | FAUCET CONNECTION SHEET | YSC-KNX.PG7-LZ-0452 |
| 7 | 3/8 ELBOW | M.GAZ-TES-SRI-014 |
| 8 | MASON 1/2 | M.MEK-TES-INX-002 |
| 9 | FRONT PANEL | YSC-KNX.PG9-LZ-0767 |
| 10 | FAUCET | M.MEK-TES-MSL-003 |
| 11 | SIGNAL LAMP | M.ELK-LMB-SNY-002 |
| 12 | TICKET | M.AKS-OZL-MTL-006 |
| 13 | BUTTON | M.AKS-DGM-EMP-024 |
| 14 | BUTTON | JP.M.AKS-DGM-EMP-022 |
| 15 | BUTTON SOCKET 6 MM | M.AKS-DGM-SKT-002 |
| 16 | M4 FRAME SPRING | M.YAY-PG-004 |
| 17 | HANDLE | M.AKS-KLP-LUX-004 |
| 18 | COVER OUTER SHEET | YSC-KNX.PG7-LZ-0488 |
| 19 | COVER INTERNAL SHEET | YSC-KNX.PG7-PN-0456 |
| 20 | NUT | JP.M.MEK-TES-SRI-015 |
| 21 | ORING 19*2MM | M.CNT-ORG-NP4-26 |
| 22 | WATER FILLING PART | YTL-KNX.PG7-KS-0016 |
| 23 | GASKET | M.CNT-PLS-KLN-002 |
| 24 | 126 °C LIMITOR | JP.M.ELK-MEK-LMT-003 |
| 25 | 30-110 °C THERMOSTAT | JP.M.ELK-MEK-TRM1-014 |
| 26 | VALVE | JP.M.MEK-TES-KVN-006 |
| 27 | NO:2 25 MM TERMINAL | M.ELK-KLM-RKL-4*4-SRY |
| 28 | TERMINAL | M.ELK-KLM-PRS-001 |
| 29 | Ø 22*7 MM MAGNET | M.MIK-PG-001 |
| 30 | DOOR PIN | YTL-KNX.PG7-KS-0015 |
| 31 | 15 CM LEG | M.AKS-AYK-INX-001 |
| 32 | HINGE SHEET | YSC-KNX.PG7-LZ-0030 |
| 33 | HINGE SHEET | YSC-KNX.PG7-LZ-0342 |
| 34 | CHASSIS | - |
| 35 | CABLE PIPE 720 MM | YBR-KNX.PG9-KS-0004 |
| 36 | CABINET REAR SHEET | YSC-KNX.PG7-PN-0584 |
| 37 | CONNECTION 1/2 | JP.M.MEK-TES-SRI-014 |
| 38 | BRACKET | JP.M.GAZ-TES-GLV-002 |
| 39 | BACK COVER SHEET | JP.YSC-KNX.PG7-PN-0391 |
| 40 | 40 CM X 7 CM CHIMNEY | JP.M.AKS-DKM-KZN-013 |

ELECTRIC BAIN MARIES

G SPARE PART LIST-EXPLODING DRAWING



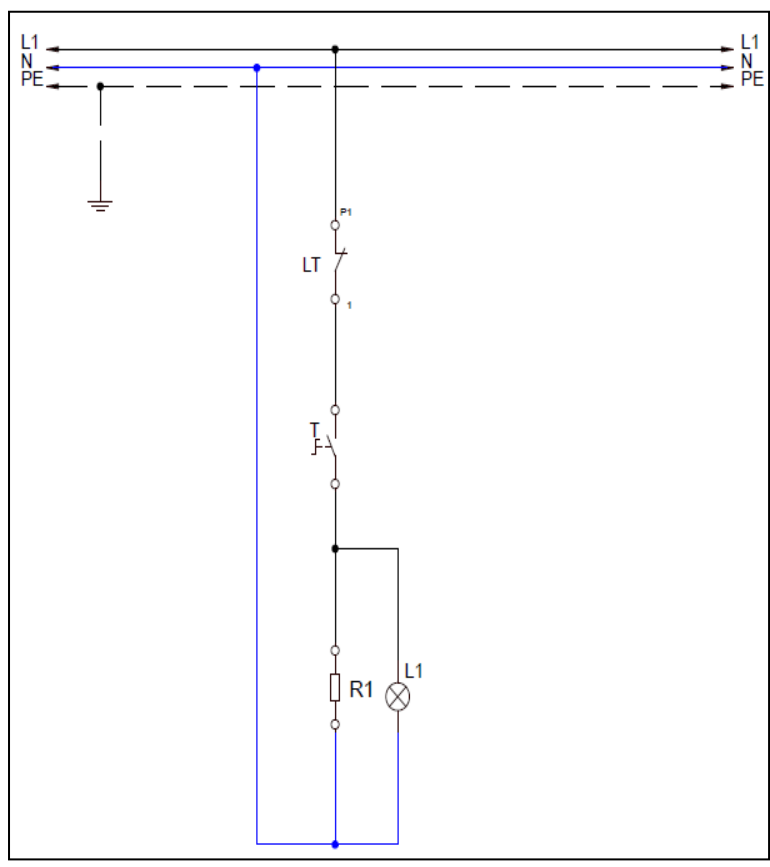
EMP.PLS.9SE020

G SPARE PART LIST-EXPLODING DRAWING

| PRODUCT CODE: EMP.PLS.9SE020 | | |
|------------------------------|---------------------------|-----------------------|
| NO | PRODUCT NAME | P.CODE |
| 1 | RESISTANCE 2.2KW-230V | M.ELK-RZS-BRU-BEN-002 |
| 2 | INSULATION BOTTOM SHEET | YSC-KNX.PG7-PN-0055 |
| 3 | INSULATION TOP SHEET | YSC-KNX.PG7-PN-0065 |
| 4 | 1/2-3/8 - 100 CM GAS FLEX | M.GAZ-TES-SPR-008 |
| 5 | NUT | JP.M.MEK-TES-SRI-015 |
| 6 | ORING 19*2MM | M.CNT-ORG-NP4-26 |
| 7 | WATER FILLING PART | YTL-KNX.PG7-KS-0016 |
| 8 | VALVE | JP.M.MEK-TES-KVN-006 |
| 9 | RELEASE BUSH | YTL-KNX.PG7-KS-0022 |
| 10 | 1/2 -1/2 80 CM GAS FLEX | M.GAZ-TES-SPR-009 |
| 11 | MASON 1/2 | M.MEK-TES-INX-002 |
| 12 | 3/8 ELBOW | M.GAZ-TES-SRI-014 |
| 13 | FRONT PANEL LEATHER | YSC-KNX.PG9-LZ-0631 |
| 14 | FAUCET | M.MEK-TES-MSL-003 |
| 15 | SIGNAL LAMP | M.ELK-LMB-SNY-002 |
| 16 | TICKET | M.AKS-OZL-MTL-006 |
| 17 | TERMINAL | M.ELK-KLM-PRS-001 |
| 18 | 126 °C LIMITOR | JP.M.ELK-MEK-LMT-003 |
| 19 | M4 FRAME SPRING | M.YAY-PG-004 |
| 20 | BUTTON SOCKET 6 MM | M.AKS-DGM-SKT-002 |
| 21 | BUTTON | JP.M.AKS-DGM-EMP-022 |
| 22 | BUTTON | M.AKS-DGM-EMP-024 |
| 23 | NO:2 25 MM TERMINAL | M.ELK-KLM-RKL-4*4-SRY |
| 24 | 30-110 °C THERMOSTAT | JP.M.ELK-MEK-TRM1-014 |
| 25 | COVER INTERNAL SHEET | YSC-KNX.PG7-PN-0456 |
| 26 | COVER OUTER SHEET | YSC-KNX.PG7-LZ-0488 |
| 27 | HANDLE | M.AKS-KLP-LUX-004 |
| 28 | GASKET | M.CNT-PLS-KLN-002 |
| 29 | Ø 22*7 MM MAGNET | M.MIK-PG-001 |
| 30 | HINGE SHEET | YSC-KNX.PG7-LZ-0342 |
| 31 | DOOR PIN | YTL-KNX.PG7-KS-0015 |
| 32 | HINGE SHEET | YSC-KNX.PG7-LZ-0030 |
| 33 | 15 CM LEG | M.AKS-AYK-INX-001 |
| 34 | CABLE PIPE 720 MM | YBR-KNX.PG9-KS-0004 |
| 35 | CABINET REAR SHEET | YSC-KNX.PG7-PN-0586 |
| 36 | CONNECTION 1/2 | JP.M.MEK-TES-SRI-014 |
| 37 | BRACKET | JP.M.GAZ-TES-GLV-002 |
| 38 | BACK SHEET METAL | YSC-KNX.PG7-PN-0398 |
| 39 | 40 CM X 7 CM CHIMNEY | JP.M.AKS-DKM-KZN-013 |

ELECTRIC BAIN MARIES

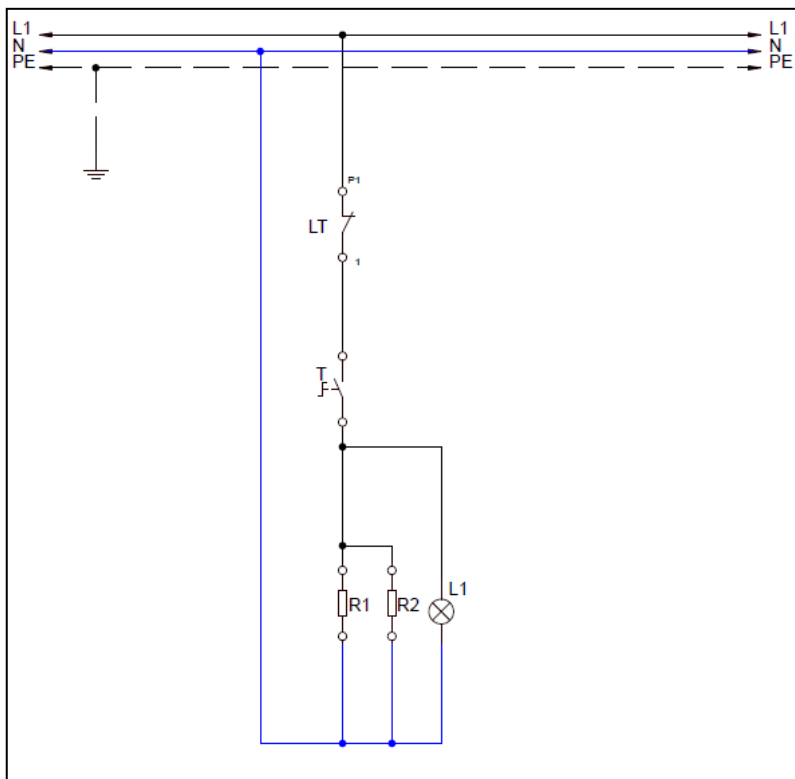
H ELECTRIC CIRCUIT SCHEMA



EMP.PLS.7SE010-9SE010

| T | L1 | R1 | LT |
|--------------------------|---------------------------|------------|----------------------------|
| Thermostat (30-110°C) | Thermostat signal lamp | Rezistance | Limit Thermostat 126 °C |

H ELECTRIC CIRCUIT SCHEMA



EMP.PLS.7SE020-9SE020

| LT | T | L1 | R1.R2 |
|----------------------------|--------------------------|---------------------------|------------|
| Limit Thermostat 126 °C | Thermostat (30-110°C) | Thermostat signal lamp | Rezistance |