

CONTENTS

A	GENERAL INFORMATION	Page 2
A1	PRODUCT DESCRIPTION	Page 3
A2	TECHNICAL INFORMATION	Page 3
A3	TRANSPORTATION	Page 4
A4	UNPACKING	Page 4
B	INSTALLATION	Page 4
C	SAFETY INSTRUCTIONS	Page 5
D	OPERATION.....	Page 6
E	CLEANING & MAINTENANCE	Page 7
F	TROUBLESHOOTING.....	Page 8
G	SPARE PART LIST- EXPLODING DRAWING	Page 9
H	ELECTRIC CIRCUIT SCHEMA	Page 23

A GENERAL INFORMATION

Before installing the appliance, read operation and maintenance instructions carefully. Wrong installation and part changing may damage the product or may cause injury on people. These are not in our company's responsibility to damage the appliance intentionally, negligence, detriments because of disobeying instructions and regulations, wrong connections. Unauthorized intervention to appliance invalidates the warranty.

1. This instruction manual should be kept in a safe place for future reference.
- 2. Installation should be made in accordance with ordinances and security rules of that country by a qualified service personnel.**
3. This appliance has to be used by trained person.
4. Please turn off the appliance immediately in the event of malfunction or failure. The appliance should be repaired only by authorized service personnel. Please demand original spare part.

ELECTRIC GRILLS

A1 PRODUCT DESCRIPTION

*The Professional Electric Grills ,that provides high efficiency has been designed to be used in industrial kitchens.

Product Code	Dimensions (mm)	Weight (kg)	Packaging Dimensions (mm)
EMP.6LE010	400x600x290	45	480x800x570
EMP.6LE020	600x600x290	60	680x800x570
EMP.6LE030	800x600x290	85	880x800x570
EMP. 6LE040	1200X600X290	105	1280x970x570
EMP.PLS.7LE010	400X730X300	31	480x860x620
EMP.PLS.7LE020	800X730X300	45	900x850x600
EMP.PLS.7LE030	1200x730x300	66	1280x860x630

A2 TECHNICAL INFORMATION

Product Code	Model	Electric Inlet	Cable (mm ²)	Power (KW)
EMP.6LE010	Electric Grill	400 V. AC 3N PE	5x2,5	3,75
EMP.6LE020	Electric Grill	400 V. AC 3N PE	5x2,5	6,25
EMP.6LE030	Electric Grill	400 V. AC 3N PE	5x2,5	8,75
EMP. 6LE040	Electric Grill	400 V.AC 3N PE	5x2,5	13,75
EMP.PLS.7LE010	Electric Grill	400 V.AC 3N PE	5x2,5	3,75
EMP.PLS.7LE020	Electric Grill	400 V.AC 3N PE	5x2,5	8,75
EMP.PLS.7LE030	Electric Grill	400 V.AC 3N PE	5x2,5	13,75

A3 TRANSPORTATION

*This appliance can not be moved by hand from area to area. It must be moved on pallet with forklift truck.

A4 UNPACKING

*Please unpack the package according to the security codes and ordinances of current country and get rid from the pack. Parts which contacts with food are produced by stainless steel. All plastic parts are marked by material's symbol.

*Please check that all the parts of appliance had come completely and if they are damaged or not during the shipping.


B INSTALLATION

*Please place the product to straight and sturdy ground, please take necessary steps against possibility of overturn.

*Technician who will serve for installation and service for the appliance must be professional on this subject and must have installation and service licenses by the company.

*Connection to Electric Power Supply must be done by authorized person.

*Please be sure that the voltage connected to appliance must be equal with the voltage which is on appliance's label.

 This appliance must be connected to an earthed outlet in accordance with safety rules and standards.










*Appliance's earthing must be connected to earthing line on panel which is nearest to electric installation.

*Connection to the main fuse and leak current fuse must be done in accordance with the current regulations.

*If the location where Electric Grills placed is covered with nonflammable heat insulation material, the distance between them must be 5 cm. Otherwise it should be at least 20 cm. The appliance shouldn't be operated under chimney hood.

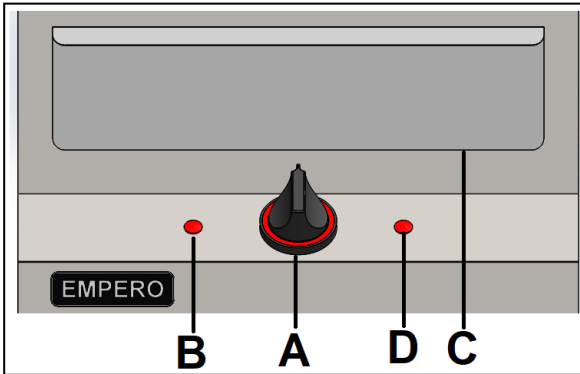
ELECTRIC GRILLS

C SAFETY INSTRUCTIONS

-  *Do not use the appliance in insufficient lighted place.
-  *Do not touch the moving attachments while the appliance operates.
-  *Do not install the appliance in the presence of flammable or explosive materials.
-  *Do not operate the appliance when the machine is empty.
-  *Do not load so less or more than appliance's capacity.
-  *Do not attempt to use the appliance without suitable protective equipments.
-  *Because of any reason if there is a fire or flame flare where the appliance is used, turn off all gas valves and electric contactor switch quickly and use fire extinguisher. Never use water to extinguish the fire.
-  *All the damages because of not having earthing connection will not be on warranty.
-  *Do not put watery materials on the grill. Otherwise oil splashes may cause serious burn.

D OPERATION

*Control Panel;



- A :Temperature adjustment knob
- B : Energy Warning Lamp
- C : Oil drawer
- D : Indicator light

*Operating;

- Plug in the grill.
- In order to operate the grill,switch (I) position.
- Operate the grill when it is empty for the first use.Then it will be ready for use.
- In order to set the appliance's temperature,switch the thermostat to desired temperature.
- When the thermostat switch is turned,the heaters start to operate.and indicator lamp on switch signals as it operates.During the operation of heaters the thermostat steps in and signal lamp becomes off if the grill is of.
- Put the materials that will be cooked on the grill,while it is being heated.
- While the cooking is going on at grill be sure that the used oil is accumulated at oil drawer.
- After the operation is completed switch to (0) position.

ELECTRIC GRILLS

E CLEANING & MAINTENANCE

➤ **CLEANING AND MAINTENANCE AFTER EVERY USE**

- Always turn off the appliance and disconnect from the power supply before cleaning.
- Clean the outer surface of the appliance with a wet cloth and chrome shiner.
- Do not use abrasive cleaning chemicals as these can leave harmful residues.
- Do not clean the appliance by spraying water directly, otherwise electric motor may get damaged.
- Clean the grill with suitable scraper after every use.

➤ **PERIODIC CLEANING AND MAINTENANCE**

- Maintenance should be done by qualified person.
- Get the periodic maintenance of the appliance once in every 15 days.
- Clean the oil drawer in periodic times. For this fill the oil drawer with water and heat it. This process will help to clean frozen and stucked oil.
- Maintenance of the appliance's contactor should be done by compressed air according to frequency of use.

F TROUBLESHOOTING**THE APPLIANCE DOESN'T OPERATE**

1. Check if the appliance is plugged in.
2. Check the electrical connections and voltage.
3. Check the fuse if it is on or not.

THE APPLIANCE DOESN'T COOK WELL

1. Check if the appliance is operated at suitable temperature or not.

THE APPLIANCE STOPPED

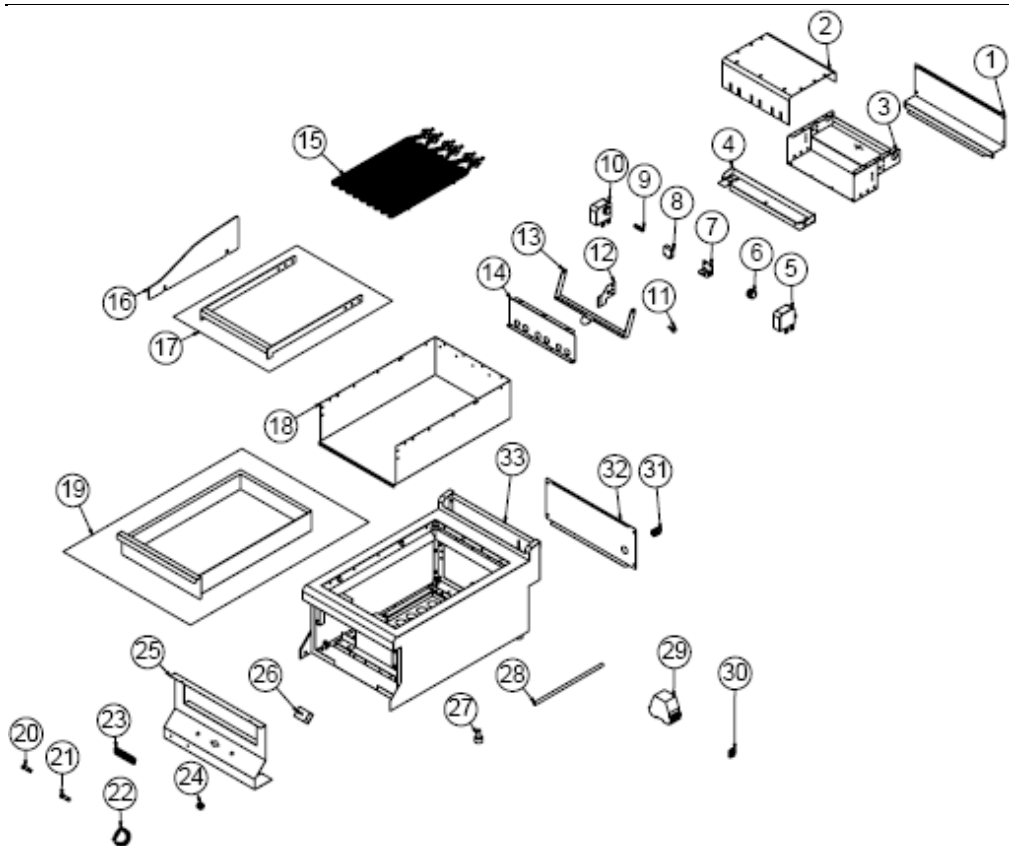
1. The appliance can stop due to low voltage. In this situation check the voltage.

- If cooking at electric grills is not done at suitable quality
- If any function of security doesn't work
 - Do not use the appliance.

***If these problems are still going on, contact with our authorized services.**

ELECTRIC GRILLS

G SPARE PART LIST-EXPLODING DRAWING



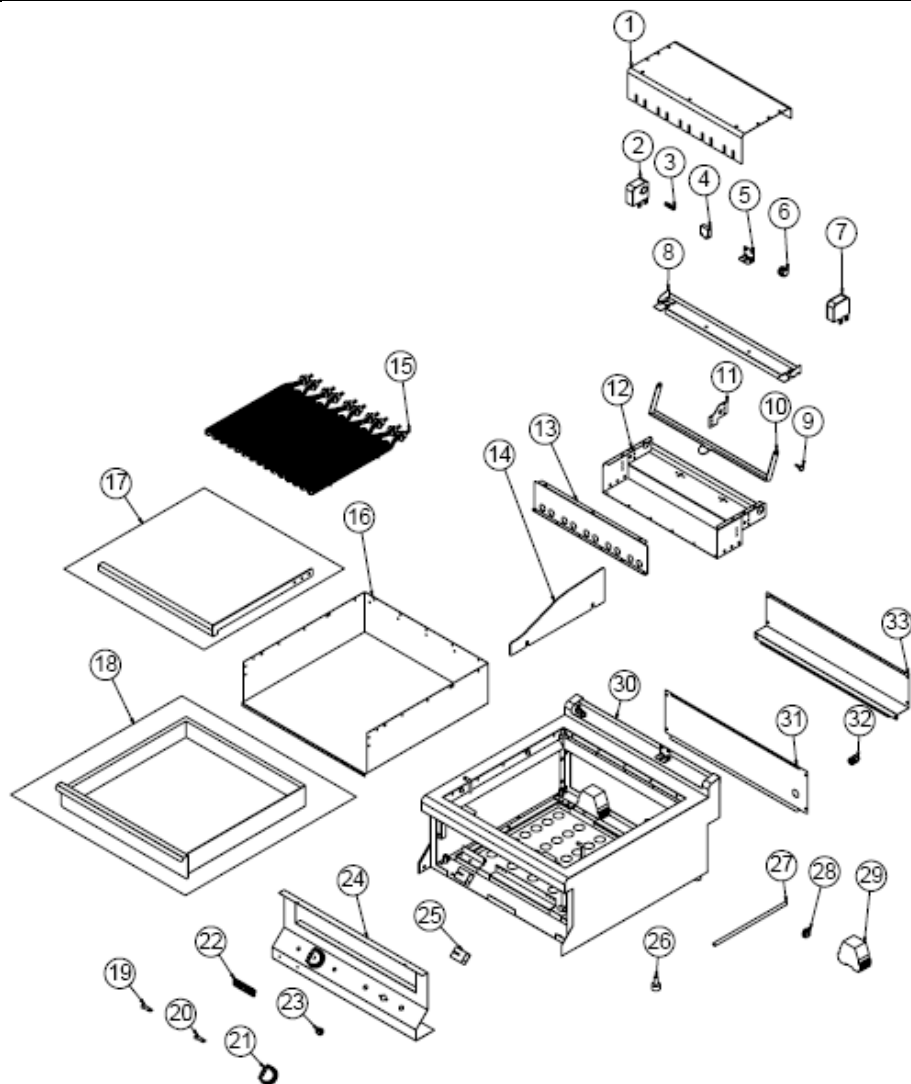
EMP.6LE010

G SPARE PART LIST-EXPLODING DRAWING

PRODUCT CODE: EMP.6LE010		
NO	PRODUCT NAME	P.CODE
1	REAR TOP SHEET	YSC-KNX.SNC-LZ-0294
2	RESISTANCE CONEXION SHEET	YSC-KNX.PG7-LZ-0863
3	RESISTANCE CONEXION SHEET	YSC-KNX.PG7-LZ-0864
4	TABLE EXTENSION SHEET METAL	YSC-KNX.PG7-LZ-0871
5	RESISTANCE CONEXION SHEET	YSC-KNX.PG7-LZ-0868
6	HINGEBUSH	YTL-KNX.PG7-KS-0011
7	SWITCH CONNECTION SHEET METAL	YSC-KNX.PG7-LZ-0859
8	SWITCH BS1010	M.ELK-SWC-EMAS-002
9	SPRING Ø16*75MM	M.YAY-PG-001
10	RESISTANCE CONNECTION S/S LEFT SHEET	YSC-KNX.SNC-LZ-0149
11	STOP PIN	YTL-KNX.PG7-KS-0025
12	SUPPORT SHEET METAL	YSC-KNX.PG7-LZ-0857
13	BALANCE SHEET METAL	YSC-KNX.PG7-LZ-0867
14	RESISTANCE CONEXION SHEET	YSC-KNX.PG7-LZ-0866
15	380V 1250W RESISTANCE	M.ELK-RZS-BRU-IZG-010
16	TABLE SIDE SHEET METAL	YSC-KNX.PG7-LZ-0873
17	RESISTANCE CONEXION SHEET	ARA-KNX.SNC-0030
18	DRAWER BATH SHEET METAL	YSC-KNX.PG7-PN-0720
19	DRAWER	ARA-KNX.SNC-0019
20	WARNING LAMP	M.ELK-LMB-SNY-001
21	SIGNAL LAMP	M.ELK-LMB-SNY-002
22	BUTTON	JP.M.AKS-DGM-MUH-001
23	TICKET	JP.M.AKS-OZL-MTL-001
24	BUTTON SOCKET 6 MM	M.AKS-DGM-SKT-002
25	FRONT PANEL SHEET METAL	YSC-KNX.PG7-LZ-0872
26	REGULATOR 240V 13A	JP.M.ELK-MEK-TRM1-017
27	M10*35 FOOT	JP.M.AKS-AYK-PLS-002
28	ELECTRIC PIPE 300 MM	YBR-KNX.SNC-KS-0005
29	CONTACTOR 230V	JP.M.ELK-KNT-KNT-006
30	NO:2 25 MM TERMINAL	M.ELK-KLM-RKL-4*4-SRY
31	PG-16 CABLE FITTING	JP.M.ELK-RKR-PLS-001
32	REAR BOTTOM SHEET	YSC-KNX.SNC-PN-0106
33	CHASSIS	-

ELECTRIC GRILLS

G SPARE PART LIST-EXPLODING DRAWING



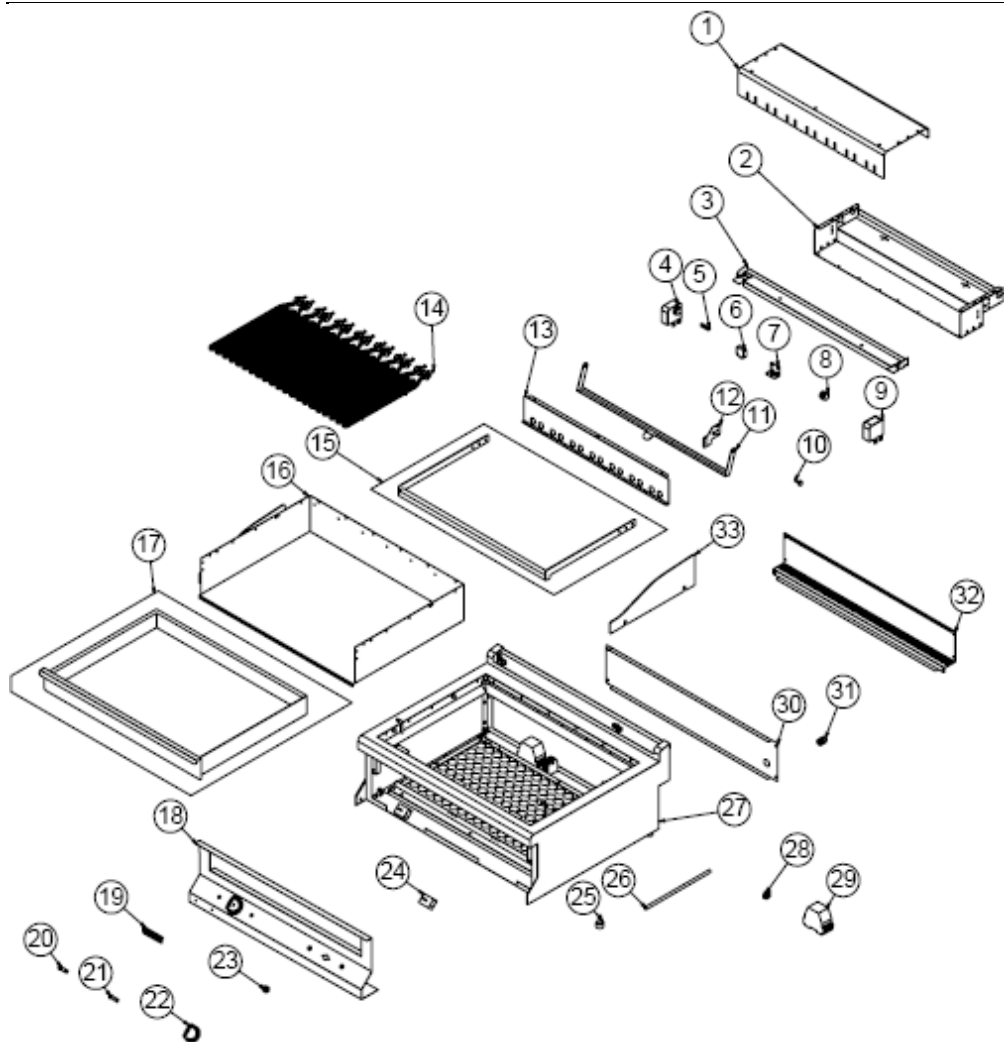
EMP.6LE020

G SPARE PART LIST-EXPLODING DRAWING

PRODUCT CODE : EMP.6LE020		
NO	PRODUCT NAME	P.CODE
1	RESISTANCE CONEXION SHEET	YSC-KNX.PG7-LZ-0878
2	RESISTANCE CONNECTION S/S LEFT SHEET	YSC-KNX.SNC-LZ-0149
3	SPRING Ø16*75MM	M.YAY-PG-001
4	SWITCH BS1010	M.ELK-SWC-EMAS-002
5	SWITCH CONNECTION SHEET METAL	YSC-KNX.PG7-LZ-0859
6	HINGEBUSH	YTL-KNX.PG7-KS-0011
7	RESISTANCE CONEXION SHEET	YSC-KNX.PG7-LZ-0868
8	TABLE EXTENSION SHEET METAL	YSC-KNX.PG7-LZ-0876
9	STOP PIN	YTL-KNX.PG7-KS-0025
10	BALANCE SHEET METAL	YSC-KNX.PG7-LZ-0882
11	SUPPORT SHEET METAL	YSC-KNX.PG7-LZ-0857
12	RESISTANCE CONEXION SHEET	YSC-KNX.PG7-LZ-0879
13	RESISTANCE CONEXION SHEET	YSC-KNX.PG7-LZ-0881
14	TABLE SIDE SHEET METAL	YSC-KNX.PG7-LZ-0873
15	380V 1250W RESISTANCE	M.ELK-RZS-BRU-IZG-010
16	DRAWER BATH SHEET METAL	YSC-KNX.PG7-PN-0725
17	RESISTANCE CONEXION SHEET	ARA-KNX.SNC-0031
18	DRAWER	ARA-KNX.SNC-0020
19	WARNING LAMP	M.ELK-LMB-SNY-001
20	SIGNAL LAMP	M.ELK-LMB-SNY-002
21	BUTTON	JP.M.AKS-DGM-MUH-001
22	TICKET	JP.M.AKS-OZL-MTL-001
23	BUTTON SOCKET 6 MM	M.AKS-DGM-SKT-002
24	FRONT PANEL SHEET METAL	YSC-KNX.PG7-LZ-0877
25	REGULATOR 240V 13A	JP.M.ELK-MEK-TRM1-017
26	M10*35 FOOT	JP.M.AKS-AYK-PLS-002
27	ELECTRIC PIPE 300 MM	YBR-KNX.SNC-KS-0005
28	NO:2 25 MM TERMINAL	M.ELK-KLM-RKL-4*4-SRY
29	CONTACTOR 230V	JP.M.ELK-KNT-KNT-006
30	CHASSIS	-
31	REAR BOTTOM SHEET	YSC-KNX.SNC-PN-0111
32	PG-16 CABLE FITTING	JP.M.ELK-RKR-PLS-001
33	REAR TOP SHEET	YSC-KNX.SNC-LZ-0293

ELECTRIC GRILLS

G SPARE PART LIST-EXPLODING DRAWING



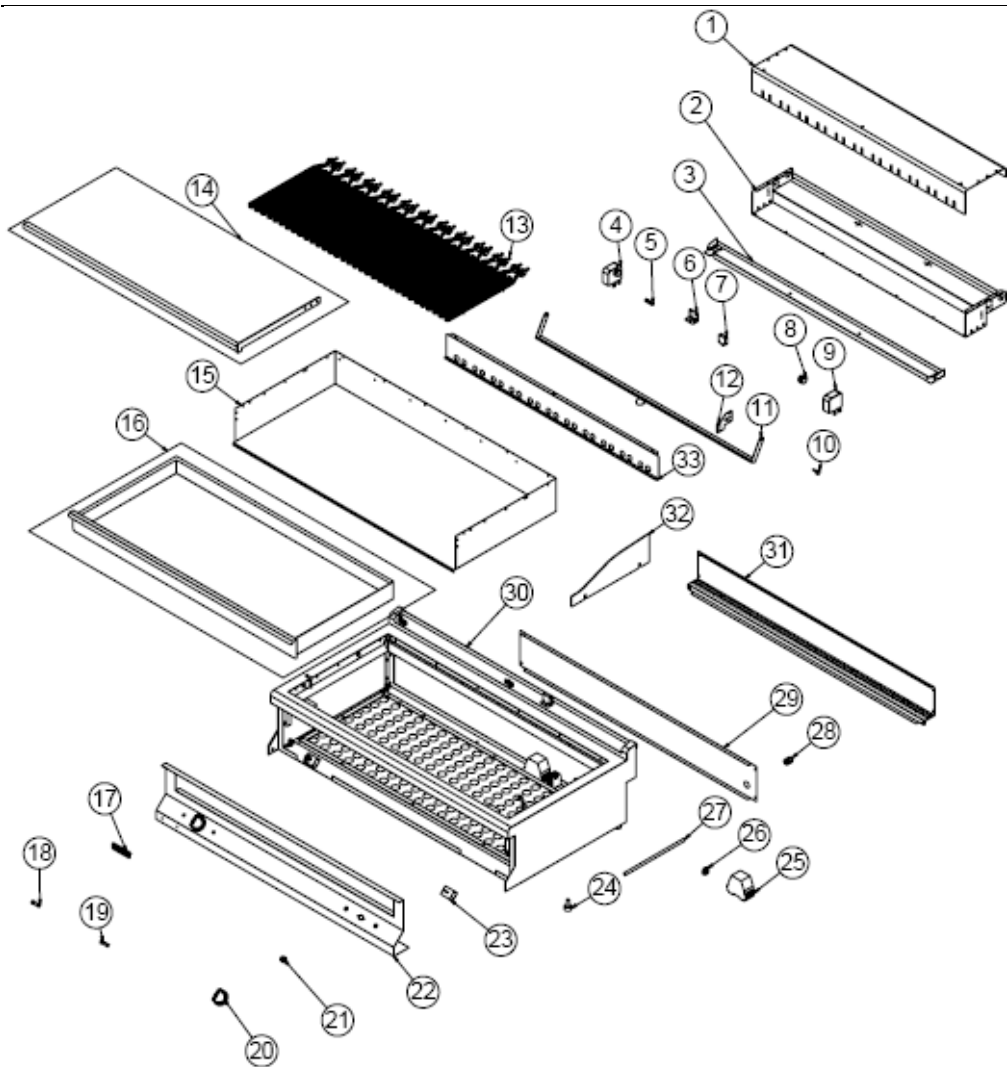
EMP.6LE030

G SPARE PART LIST-EXPLODING DRAWING

PRODUCT CODE : EMP.6LE030		
NO	PRODUCT NAME	P.CODE
1	RESISTANCE CONNECTION SHEET METAL	YSC-KNX.PG7-LZ-0887
2	RESISTANCE CONNECTION SHEET METAL	YSC-KNX.PG7-LZ-0888
3	TABLE EXTENSION SHEET METAL	YSC-KNX.PG7-LZ-0884
4	RESISTANCE CONNECTION S/S LEFT SHEET	YSC-KNX.SNC-LZ-0149
5	SPRING Ø16*75MM	M.YAY-PG-001
6	SWITCH BS1010	M.ELK-SWC-EMAS-002
7	SWITCH CONNECTION SHEET METAL	YSC-KNX.PG7-LZ-0859
8	HINGEBUSH	YTL-KNX.PG7-KS-0011
9	RESISTANCE CONEXION SHEET	YSC-KNX.PG7-LZ-0868
10	STOP PIN	YTL-KNX.PG7-KS-0025
11	BALANCE SHEET METAL	YSC-KNX.PG7-LZ-0891
12	SUPPORT SHEET METAL	YSC-KNX.PG7-LZ-0857
13	RESISTANCE CONNECTION SHEET METAL	YSC-KNX.PG7-LZ-0890
14	380V 1250W RESISTANCE	M.ELK-RZS-BRU-IZG-010
15	RESISTANCE CONEXION SHEET	ARA-KNX.SNC-0032
16	DRAWER BATH SHEET METAL	YSC-KNX.PG7-PN-0734
17	DRAWER	ARA-KNX.SNC-0021
18	FRONT PANEL SHEET METAL	YSC-KNX.PG7-LZ-0886
19	TICKET	JP.M.AKS-OZL-MTL-001
20	WARNING LAMP	M.ELK-LMB-SNY-001
21	SIGNAL LAMP	M.ELK-LMB-SNY-002
22	BUTTON	JP.M.AKS-DGM-MUH-001
23	BUTTON SOCKET 6 MM	M.AKS-DGM-SKT-002
24	REGULATOR 240V 13A	JP.M.ELK-MEK-TRM1-017
25	M10*35 FOOT	JP.M.AKS-AYK-PLS-002
26	ELECTRIC PIPE 300 MM	YBR-KNX.SNC-KS-0005
27	CHASSIS	-
28	NO:2 25 MM TERMINAL	M.ELK-KLM-RKL-4*4-SRY
29	CONTACTOR 230V	JP.M.ELK-KNT-KNT-006
30	REAR BOTTOM SHEET	YSC-KNX.PG7-PN-0731
31	PG-16 CABLE FITTING	JP.M.ELK-RKR-PLS-001
32	BACK SHEET METAL	YSC-KNX.PG7-LZ-0885
33	TABLE SIDE SHEET METAL	YSC-KNX.PG7-LZ-0873

ELECTRIC GRILLS

G SPARE PART LIST-EXPLODING DRAWING



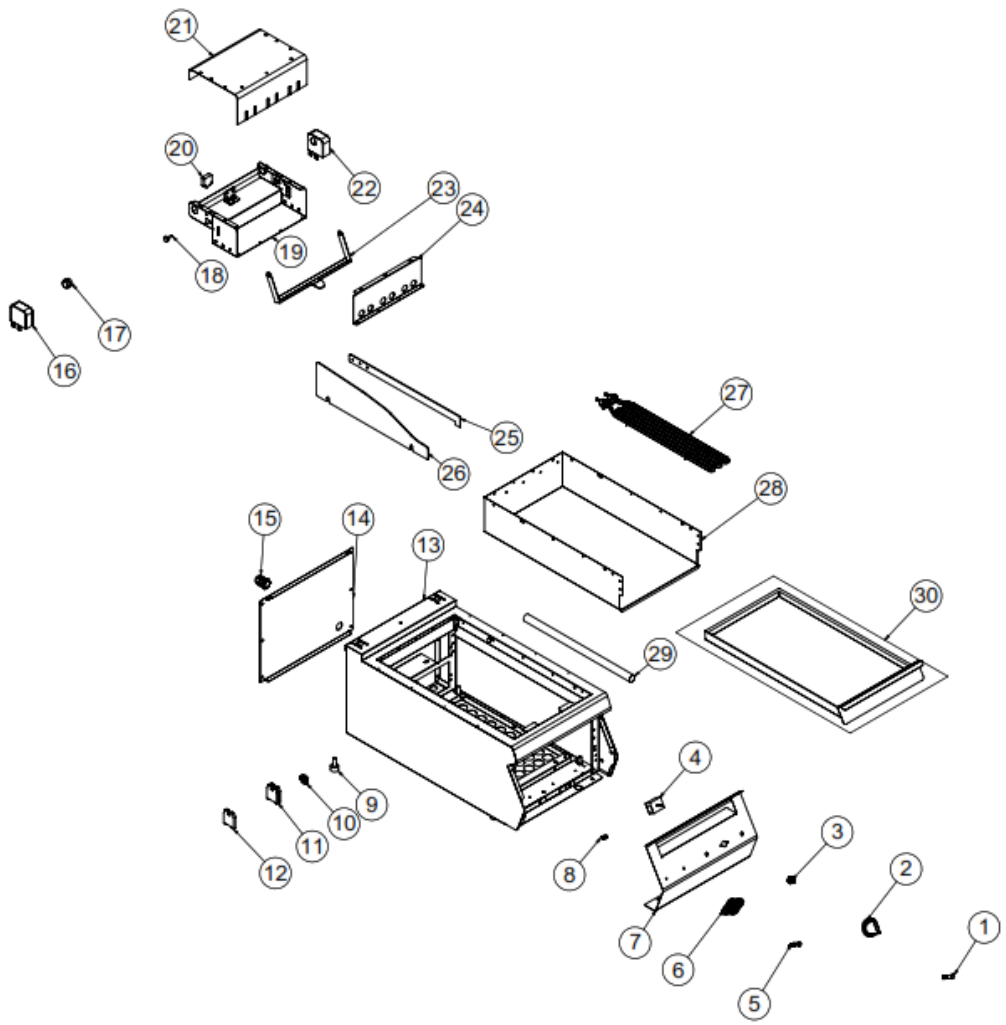
EMP.6LE040

G SPARE PART LIST-EXPLODING DRAWING

PRODUCT CODE : EMP.6LE040		
NO	PRODUCT NAME	P.CODE
1	RESISTANCE CONNECTION TOP SHEET METAL	YSC-KNX.PG7-LZ-1018
2	RESISTANCE CONNECTION SHEET METAL	YSC-KNX.PG7-LZ-0888
3	TABLE ADDITIONAL SHEET METAL	YSC-KNX.PG7-LZ-1015
4	RESISTANCE CONNECTION S/S LEFT SHEET	YSC-KNX.SNC-LZ-0149
5	SPRING Ø16*75MM	M.YAY-PG-001
6	SWITCH CONNECTION SHEET METAL	YSC-KNX.PG7-LZ-0859
7	SWITCH BS1010	M.ELK-SWC-EMAS-002
8	HINGEBUSH	YTL-KNX.PG7-KS-0011
9	RESISTANCE CONEXION SHEET	YSC-KNX.PG7-LZ-0868
10	STOP PIN	YTL-KNX.PG7-KS-0025
11	BALANCE SHEET METAL	YSC-KNX.PG7-LZ-1022
12	SUPPORT SHEET METAL	YSC-KNX.PG7-LZ-0857
13	380V 1250W RESISTANCE	M.ELK-RZS-BRU-IZG-010
14	RESISTANCE CONEXION SHEET	ARA-KNX.SNC-0033
15	DRAWER BATH SHEET METAL	YSC-KNX.PG7-PN-0872
16	DRAWER	ARA-KNX.SNC-0022
17	TICKET	JP.M.AKS-OZL-MTL-001
18	WARNING LAMP	M.ELK-LMB-SNY-001
19	SIGNAL LAMP	M.ELK-LMB-SNY-002
20	BUTTON	JP.M.AKS-DGM-MUH-001
21	BUTTON SOCKET 6 MM	M.AKS-DGM-SKT-002
22	FRONT PANEL	YSC-KNX.PG7-LZ-1017
23	REGULATOR 240V 13A	JP.M.ELK-MEK-TRM1-017
24	M10*35 FOOT	JP.M.AKS-AYK-PLS-002
25	CONTACTOR 230V	JP.M.ELK-KNT-KNT-006
26	NO:2 25 MM TERMINAL	M.ELK-KLM-RKL-4*4-SRY
27	ELECTRIC PIPE 300 MM	YBR-KNX.SNC-KS-0005
28	PG-16 CABLE FITTING	JP.M.ELK-RKR-PLS-001
29	REAR BOTTOM SHEET	YSC-KNX.PG7-PN-0869
30	CHASSIS	-
31	BACK SHEET METAL	YSC-KNX.PG7-LZ-1016
32	TABLE SIDE SHEET METAL	YSC-KNX.PG7-LZ-0873
33	RESISTANCE CONNECTION S/S MID SHEET	YSC-KNX.PG7-LZ-1021

ELECTRIC GRILLS

G SPARE PART LIST-EXPLODING DRAWING



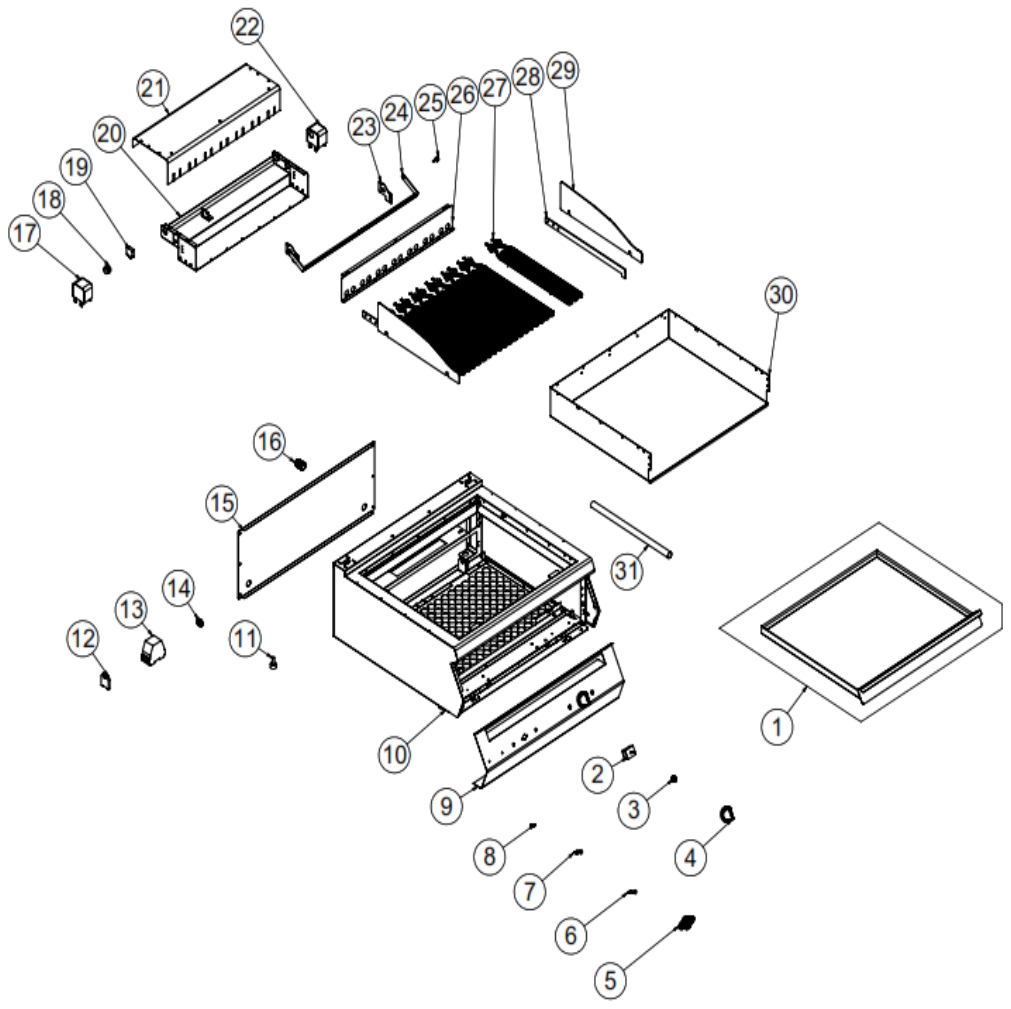
EMP.PLS.7LE010

G SPARE PART LIST-EXPLODING DRAWING
PRODUCT CODE : EMP.PLS.7LE010

NO	PRODUCT NAME	P.CODE
1	WARNING LAMP	M.ELK-LMB-SNY-001
2	BUTTON	JP.M.AKS-DGM-MUH-001
3	BUTTON SOCKET 6 MM	M.AKS-DGM-SKT-002
4	REGULATOR 240V 13A	JP.M.ELK-MEK-TRM1-017
5	SIGNAL LAMP	M.ELK-LMB-SNY-002
6	TICKET	M.AKS-OZL-MTL-006
7	FRONT PANEL	YSC-KNX.PG7-LZ-1011
8	SPRING Ø14*75MM	M.YAY-PG-002
9	M10*35 FOOT	JP.M.AKS-AYK-PLS-002
10	NO:2 25 MM TERMINAL	M.ELK-KLM-RKL-4*4-SRY
11	CONTACTOR 230V	JP.M.ELK-KNT-KNT-006
12	AVK 16 TERMINAL	JP.M.ELK-KLM-058
13	CHASSIS	-
14	BACK COVER SHEET	JP.YSC-KNX.PG7-PN-0391
15	PG-16 CABLE FITTING	JP.M.ELK-RKR-PLS-001
16	RESISTANCE CONNECTION S/S LEFT SHEET	YSC-KNX.SNC-LZ-0149
17	HINGEBUSH	YTL-KNX.PG7-KS-0011
18	STOP PIN	YTL-KNX.PG7-KS-0025
19	RESISTANCE CONEXION SHEET	YSC-KNX.PG7-LZ-0864
20	SWITCH BS1010	M.ELK-SWC-EMAS-002
21	RESISTANCE CONEXION SHEET	YSC-KNX.PG7-LZ-0863
22	RESISTANCE CONEXION SHEET	YSC-KNX.PG7-LZ-0868
23	BALANCE SHEET METAL	YSC-KNX.PG7-LZ-0867
24	RESISTANCE CONEXION SHEET	YSC-KNX.PG7-LZ-0866
25	RESISTANCE CONEXION SHEET	YSC-KNX.PG7-LZ-0855
26	TABLE SIDE SHEET METAL	YSC-KNX.PG7-LZ-0856
27	380V 1250W RESISTANCE	M.ELK-RZS-BRU-IZG-009
28	DRAWER BATH SHEET METAL	YSC-KNX.PG7-PN-0825
29	CABLE PIPE 450 MM	YBR-KNX.PG9-KS-0002
30	DRAWER	ARA-KNX.PG7-0009

ELECTRIC GRILLS

G SPARE PART LIST-EXPLODING DRAWING



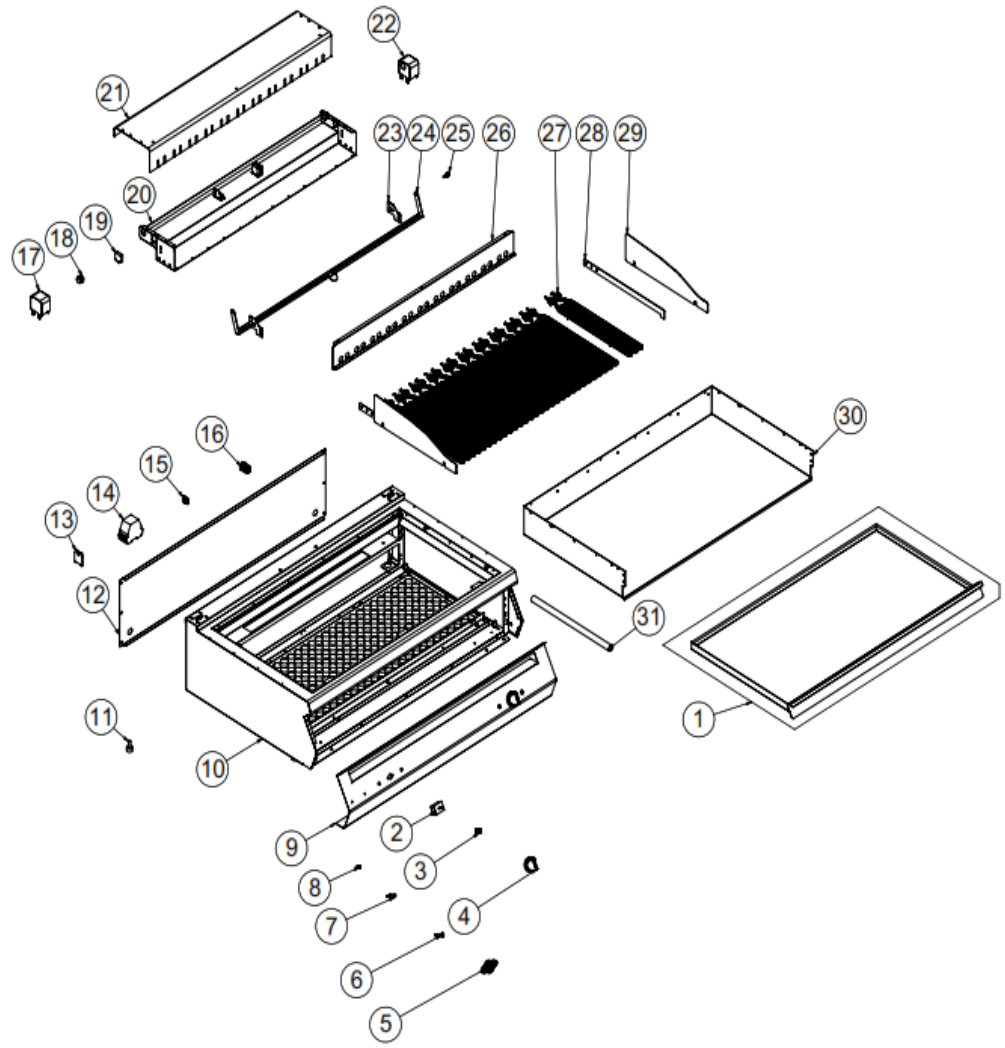
EMP.PLS.7LE020

G SPARE PART LIST-EXPLODING DRAWING
PRODUCT CODE : EMP.PLS.7LE020

NO	PRODUCT NAME	P.CODE
1	DRAWER	ARA-KNX.PG7-0010
2	REGULATOR 240V 13A	JP.M.ELK-MEK-TRM1-017
3	BUTTON SOCKET 6 MM	M.AKS-DGM-SKT-002
4	BUTTON	JP.M.AKS-DGM-MUH-001
5	TICKET	M.AKS-OZL-MTL-006
6	WARNING LAMP	M.ELK-LMB-SNY-001
7	SIGNAL LAMP	M.ELK-LMB-SNY-002
8	SPRING Ø14*75MM	M.YAY-PG-002
9	FRONT PANEL	YSC-KNX.PG7-LZ-1012
10	CHASSIS	-
11	M10*35 FOOT	JP.M.AKS-AYK-PLS-002
12	AVK 16 TERMINAL	JP.M.ELK-KLM-058
13	CONTACTOR 230V	JP.M.ELK-KNT-KNT-006
14	NO:2 25 MM TERMINAL	M.ELK-KLM-RKL-4*4-SRY
15	BACK SHEET METAL	YSC-KNX.PG7-PN-0398
16	PG-16 CABLE FITTING	JP.M.ELK-RKR-PLS-001
17	RESISTANCE CONEXION SHEET	YSC-KNX.PG7-LZ-0336
18	HINGEBUSH	YTL-KNX.PG7-KS-0011
19	SWITCH BS1010	M.ELK-SWC-EMAS-002
20	RESISTANCE CONEXION SHEET	YSC-KNX.PG7-LZ-0851
21	RESISTANCE CONEXION SHEET	YSC-KNX.PG7-LZ-0850
22	RESISTANCE CONEXION SHEET	YSC-KNX.PG7-LZ-0847
23	SUPPORT SHEET METAL	YSC-KNX.PG7-LZ-0857
24	BALANCE SHEET METAL	YSC-KNX.PG7-LZ-0858
25	STOP PIN	YTL-KNX.PG7-KS-0025
26	RESISTANCE CONEXION SHEET	YSC-KNX.PG7-LZ-0853
27	380V 1250W RESISTANCE	M.ELK-RZS-BRU-IZG-009
28	RESISTANCE CONEXION SHEET	YSC-KNX.PG7-LZ-0855
29	TABLE SIDE SHEET METAL	YSC-KNX.PG7-LZ-0856
30	DRAWER BATH SHEET METAL	YSC-KNX.PG7-PN-0821
31	CABLE PIPE 450 MM	YBR-KNX.PG9-KS-0002

ELECTRIC GRILLS

G SPARE PART LIST-EXPLODING DRAWING



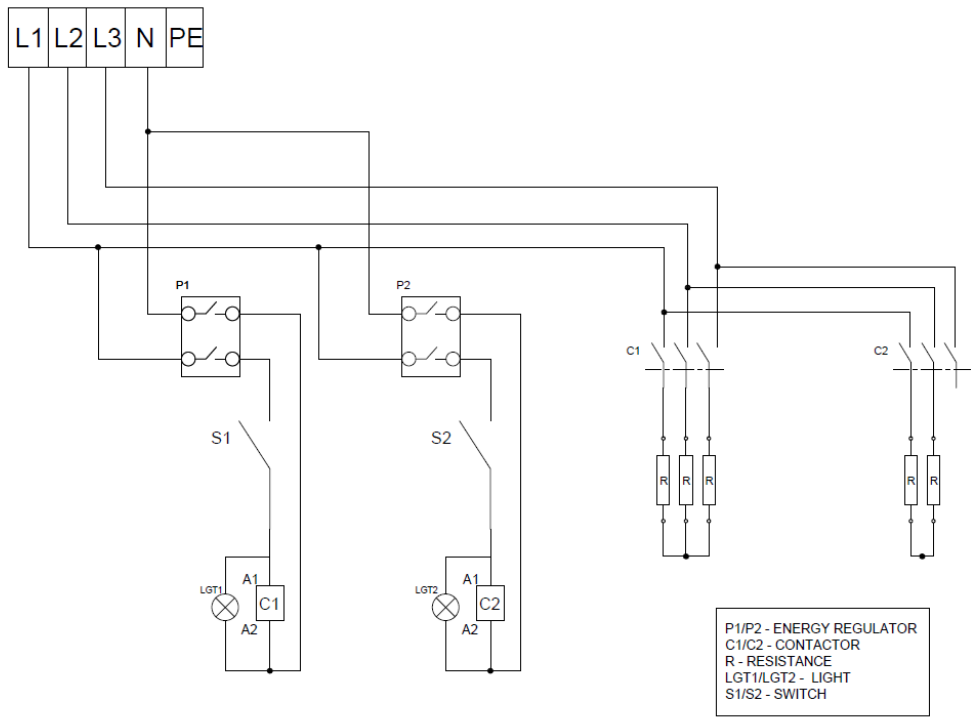
EMP.PLS.7LE030

G SPARE PART LIST-EXPLODING DRAWING
PRODUCT CODE : EMP.PLS.7LE030

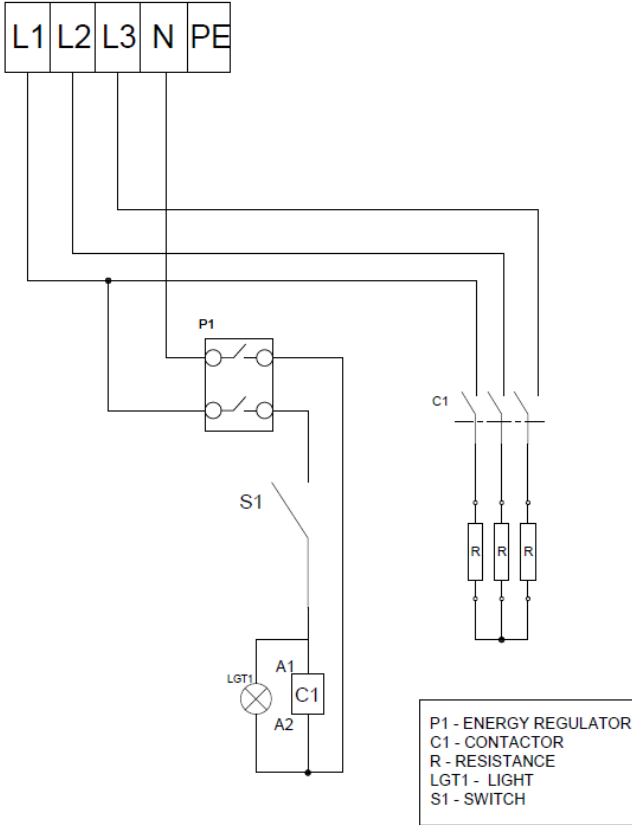
NO	PRODUCT NAME	P.CODE
1	DRAWER	ARA-KNX.PG7-0011
2	REGULATOR 240V 13A	JP.M.ELK-MEK-TRM1-017
3	BUTTON SOCKET 6 MM	M.AKS-DGM-SKT-002
4	BUTTON	JP.M.AKS-DGM-MUH-001
5	TICKET	M.AKS-OZL-MTL-006
6	WARNING LAMP	M.ELK-LMB-SNY-001
7	SIGNAL LAMP	M.ELK-LMB-SNY-002
8	SPRING Ø14*75MM	M.YAY-PG-002
9	FRONT PANEL	YSC-KNX.PG7-LZ-1013
10	CHASSIS	-
11	M10*35 FOOT	JP.M.AKS-AYK-PLS-002
12	BACK SHEET METAL	YSC-KNX.PG7-LZ-0435
13	AVK 16 TERMINAL	JP.M.ELK-KLM-058
14	CONTACTOR 230V	JP.M.ELK-KNT-KNT-006
15	NO:2 25 MM TERMINAL	M.ELK-KLM-RKL-4*4-SRY
16	PG-16 CABLE FITTING	JP.M.ELK-RKR-PLS-001
17	RESISTANCE CONEXION SHEET	YSC-KNX.PG7-LZ-0336
18	HINGEBUSH	YTL-KNX.PG7-KS-0011
19	SWITCH BS1010	M.ELK-SWC-EMAS-002
20	RESISTANCE CONNECTION SHEET METAL	YSC-KNX.PG7-LZ-0903
21	RESISTANCE CONNECTION SHEET METAL	YSC-KNX.PG7-LZ-0902
22	RESISTANCE CONEXION SHEET	YSC-KNX.PG7-LZ-0847
23	SUPPORT SHEET METAL	YSC-KNX.PG7-LZ-0857
24	BALANCE SHEET METAL	YSC-KNX.PG7-LZ-0906
25	STOP PIN	YTL-KNX.PG7-KS-0025
26	RESISTANCE CONNECTION SHEET METAL	YSC-KNX.PG7-LZ-0905
27	380V 1250W RESISTANCE	M.ELK-RZS-BRU-IZG-009
28	RESISTANCE CONEXION SHEET	YSC-KNX.PG7-LZ-0855
29	TABLE SIDE SHEET METAL	YSC-KNX.PG7-LZ-0856
30	DRAWER BATH SHEET METAL	YSC-KNX.PG7-PN-0830
31	CABLE PIPE 450 MM	YBR-KNX.PG9-KS-0002

ELECTRIC GRILLS

H ELECTRIC CIRCUIT SCHEMA



6LE020

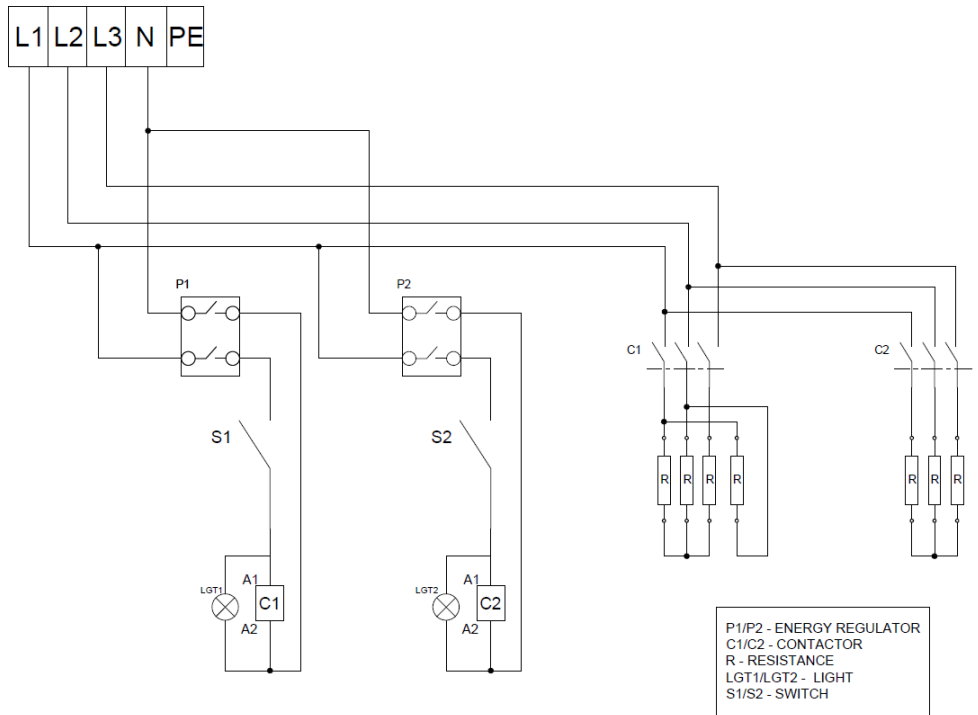


6LE010 - 7LE010

T1	LT	C1	L1	R1
Termostat (50-300°C)	Limit termostat 360°	Kontaktör	Termostat sinyal lambası	Rezistans

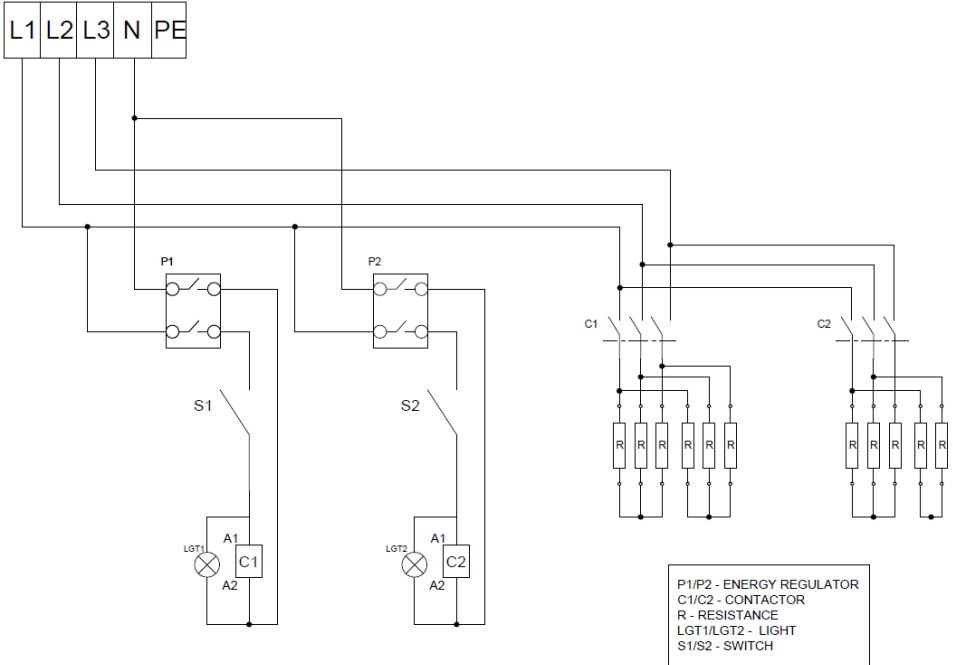
ELECTRIC GRILLS

H ELEKTRİK DEVRE ŞEMASI



6LE030 - 7LE020

T1.T2	LT1-LT2	C1.C2	L1.L2	R1.R2
Termostat (50-180°C)	Limit termostat 360°	Kontaktör	Termostat sinyal lambası	Rezistans



6LE040 – 7LE030