



GAS WOK COOKERS

CONTENTS

A	GENERAL INFORMATION	Page 2
A1	PRODUCT DESCRIPTION	Page 3
A2	TECHNICAL INFORMATION	Page 3
A3	TRANSPORTATION	Page 3
A4	UNPACKING	Page 4
B	INSTALLATION	Page 4
C	SAFETY INSTRUCTIONS	Page 5
D	OPERATION	Page 6
E	CLEANING & MAINTENANCE.....	Page 7
F	TROUBLESHOOTING	Page 8
G	INJECTOR CHANGE AND GAS SETTING	Page 9
H	GAS CONNECTION IMAGES.....	Page 10
I	SPARE PART LIST- EXPLODING DRAWING	Page 13

A GENERAL INFORMATION

Before installing the appliance, read operation and maintenance instructions carefully. Wrong installation and part changing may damage the product or may cause injury on people. These are not in our company's responsibility to damage the appliance intentionally, negligence, detriments because of disobeying instructions and regulations, wrong connections. Unauthorized intervention to appliance invalidates the warranty.

1. This instruction manual should be kept in a safe place for future reference.
2. **Installation should be made in accordance with ordinances and security rules of that country by a qualified service personnel.**
3. This appliance has to be used by trained person.
4. Please turn off the appliance immediately in the event of malfunction or failure. The appliance should be repaired only by authorized service personnel. Please demand original spare part.

GAS WOK COOKERS

A1 PRODUCT DESCRIPTION

*The Professional Gas wok cookers ,that provides high efficiency has been designed to be used in industrial kitchens.

Product Code	Model	Dimensions (mm)	Weight (kg)	Packaging Dimensions (mm)
EMP.PLS.7WK010	1 Burner Gas Ranges	400x730x300	40	480X860X620
EMP.PLS.7WK020	2 Burner Gas Ranges	800x730x300	76	900X850X620
EMP.PLS.7WK030	3 Burner Gas Ranges	1200x730x300	107	1280X800X590
EMP.PLS.9WK010	1 Burner Gas Ranges	400X900X300	45	480x1000x620
EMP.PLS.9WK020	2 Burner Gas Ranges	800X900X300	84	900x1000x620
EMP.PLS.9WK030	3 Burner Gas Ranges	1200X900X300	110	1280x1000x620

A2 TECHNICAL INFORMATION

Product Code	Power NG (KW)	Gas Consumption m ³ /h (NG)	Power LPG (KW)	Gas Consumption kg/h (LPG)
EMP.PLS.7WK010	18,00	1,90	13,5	1,05
EMP.PLS.7WK020	36,00	3,80	27	2,1
EMP.PLS.7WK030	54,00	5,60	39,5	3,15
EMP.PLS.9WK010	18,00	1,90	13,5	1,05
EMP.PLS.9WK020	36,00	3,80	27	2,1
EMP.PLS.9WK030	54,00	5,60	39,5	3,15

A3 TRANSPORTATION

*This appliance can be moved by hand from area to area. Do not crash and drop the appliance while transporting.

A4 UNPACKING

*Please unpack the package according to the security codes and ordinances of current country and get rid from the pack. Parts which contacts with food are produced by stainless steel. All plastic parts are marked by material's symbol.

*Please check that all the parts of appliance had come completely and if they are damaged or not during the shipping.

B INSTALLATION

*Please place the product to straight and sturdy ground, please take necessary steps against possibility of overturn.

*Technician who will serve for installation and service for the appliance must be professional on this subject and must have installation and service licenses by the company.

*Connection to Gas Fitment must be done by authorized person.

*The area where the appliance is must have enough ventilation and vent-hole.

*The appliance must be connected correctly according to local and national gas standards of your country.

*The appliance gas entrances are indicated with "G" label on the body.










*Connection to gas fitment must be done with suitable diameter metal flex pipe and spheric valve. The spheric valve must be immobilized to a place that is far away from heat and accessible during the danger. After gas entrance connection done, gas leakages must be checked.

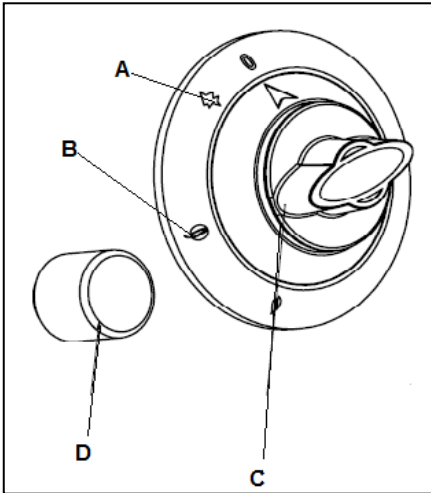
*According to the datas on appliance information plate, gas and pressure must be adjusted. If the gas type that is adjusted is not the suitable with gas type that is at installation place, apply the instructions that is about adjustment of different gas type. (**Event :G**)

*If the location where gas ranges placed is covered with nonflammable heat insulation material, the distance between them must be 5 cm. Otherwise it should be at least 20 cm. The appliance shouldn't be operated under chimney hood.

GAS WOK COOKERS

C SAFETY INSTRUCTIONS

-  *Do not use the appliance in insufficient lighted place.
-  *Do not touch the moving attachments while the appliance operates.
-  *Do not install the appliance in the presence of flammable or explosive materials.
-  *Do not operate the appliance when the machine is empty.
-  *Do not load so less or more than appliance's capacity.
-  *Do not attempt to use the appliance without suitable protective equipments.
-  *Because of any reason if there is a fire or flame flare where the appliance is used, turn off all gas valves and electric contactor switch quickly and use fire extinguisher. Never use water to extinguish the fire.
-  *If there is gas leakage where the appliance is, do not fire absolutely and do not use electric.
-  *Definitely do not allow to check the sealing with flame.

D OPERATION***Control Panel;****A** : Lighter Position**B** : Full Flame**C** : Half Flame**D** : Lighter***Operating;**

- According to type of use,make gas entrance connection from behind the machine.Because the machine is operated with LPG and NG.
- Press the Range Gas Button and provide full flame position and fire the range at pressed position.
- After the range is fired,press the button for a couple seconds to heat safety thermocouple's end.
- According to cooking type (half/full flame),the position can be adjusted.

GAS WOK COOKERS

E CLEANING & MAINTENANCE

➤ **CLEANING AND MAINTENANCE AFTER EVERY USE**

- Turn off the gas connection before cleaning.
- Clean the outer surface of the appliance with a wet cloth and chrome shiner.
- Do not use abrasive cleaning chemicals as these can leave harmful residues.
- Do not wash the appliance with pressure water.
- Do not clean the appliance with a materials that may hurt chrome material.
- Wash the grills with hot water and then dry after every use.

➤ **PERIODIC CLEANING AND MAINTENANCE**

- Maintenance should be done by qualified person.
- These parts ; Gas storage,thermocouples,taps,burner,lighter and spark plug cable are not maintained so they need to be changed when they have error.
- Check the gas connection hoses in periodic time.If there is slit,hole..etc,change the hoses.
- Ventilate the area where the device is in periodic times.

F TROUBLESHOOTING

THE APPLIANCE DOESN'T OPERATE	<ol style="list-style-type: none">1. Check if the gas connection is done or not.2. If there is no gas entrance to pilot,the appliance is not operated.3. If the hoses that have gas entrance lose gas due to slit,hole.etc.,the appliance is not operated.
--------------------------------------	--

MEATS ARE NOT COOKED WELL	<ol style="list-style-type: none">1. Check if it is operated at suitable gas setting or not.
----------------------------------	--

THE APPLIANCE STOPPED	<ol style="list-style-type: none">1. Gas flow is stopped automatically when the flame is off due to having gas tap that has safety valve.In this situation the appliance is not operated.2. When there is gas leakage,if there is solenoid gas stopper alarm,gas flow is stopped and the appliance is not operated.Ventilate the area through the agency of vent-hole.
------------------------------	---

<ul style="list-style-type: none">• If cooking at gas ranges is not done at suitable quality• If any function of security doesn't work<ul style="list-style-type: none">➤ Do not use the appliance.
--

***If these problems are still going on,contact with our authorized services.**

GAS WOK COOKERS

G INJECTOR CHANGE AND GAS SETTING

GAS RANGE BURNER - INJECTOR CHANGE CHART

NG / LPG		G20	G25	G30	G31
				30/50 mbar	30/50 mbar
EMP.PLS.7WK010	Ø mm	Ø 3,00	Ø 3,00	Ø 1,80	Ø 1,80
	X	1x	1x	1x	1x
EMP.PLS.7WK020	Ø mm	Ø 3,00	Ø 3,00	Ø 1,80	Ø 1,80
	X	2x	2x	2x	2x
EMP.PLS.7WK030	Ø mm	Ø 3,00	Ø 3,00	Ø 1,80	Ø 1,80
	X	3x	3x	3x	3x
EMP.PLS.9WK010	Ø mm	Ø 3,00	Ø 3,00	Ø 1,80	Ø 1,80
	X	1x	1x	1x	1x
EMP.PLS.9WK020	Ø mm	Ø 3,00	Ø 3,00	Ø 1,80	Ø 1,80
	X	2x	2x	2x	2x
EMP.PLS.9WK030	Ø mm	Ø 3,00	Ø 3,00	Ø 1,80	Ø 1,80
	X	3x	3x	3x	3x

Change of Burner Injector;

1. gas pipe carries the gas pressure(A)
2. gas pressure setting be done with B (Image 1)
3. To be used with the appropriate type of gas injector "D" Replace according to the values in the table.(Image 2)
4. Injector kit "C"appropriate to the type of gas injector is mounted together

Setting of Half Flame;

1. Remove the tap button and set by turning tap half flame screw (E) with suitable screwdriver.
(Image 3)Turn it to left for transformation from LPG to N.G,turn it right for transformation from N.G to LPG.
2. Sign gas combustion control with lighter button (F)
3. After this process,operate the appliance and set it not to be deflated during transition from full flame to half flame.

H GAS CONNECTION IMAGES

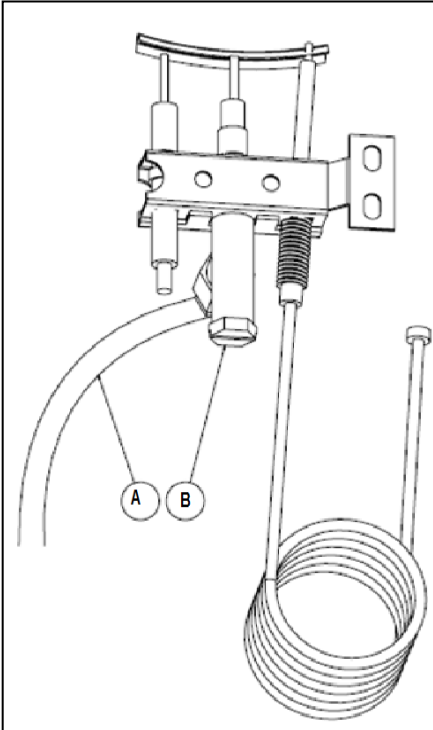


Image 1

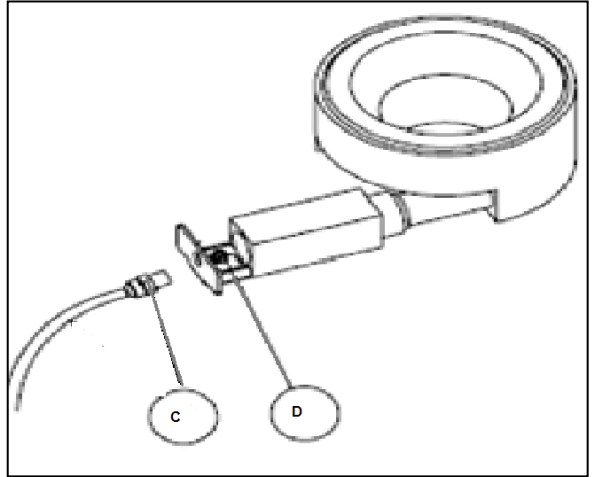


Image 2

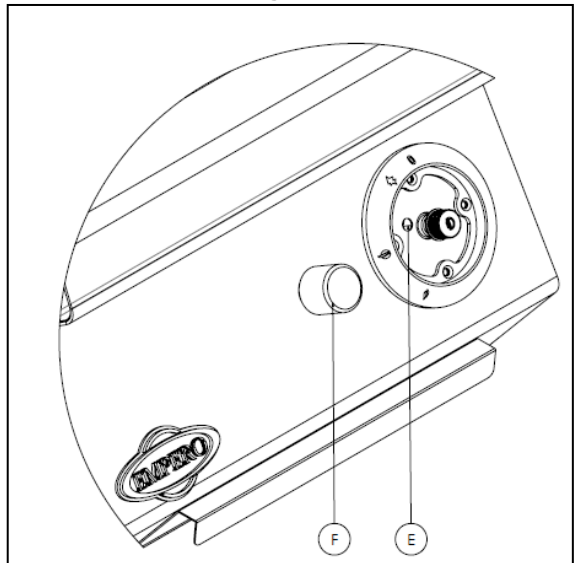
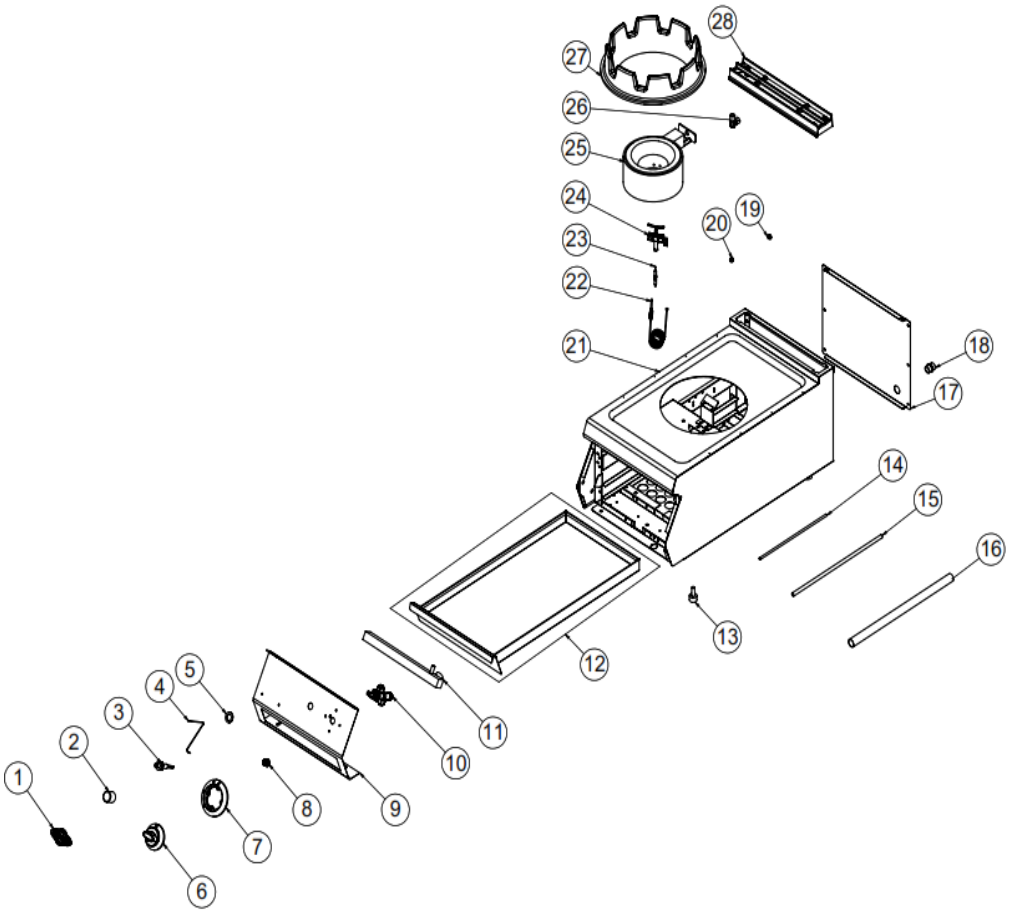


Image 3

GAS WOK COOKERS

I SPARE PART LIST-EXPLODING DRAWING



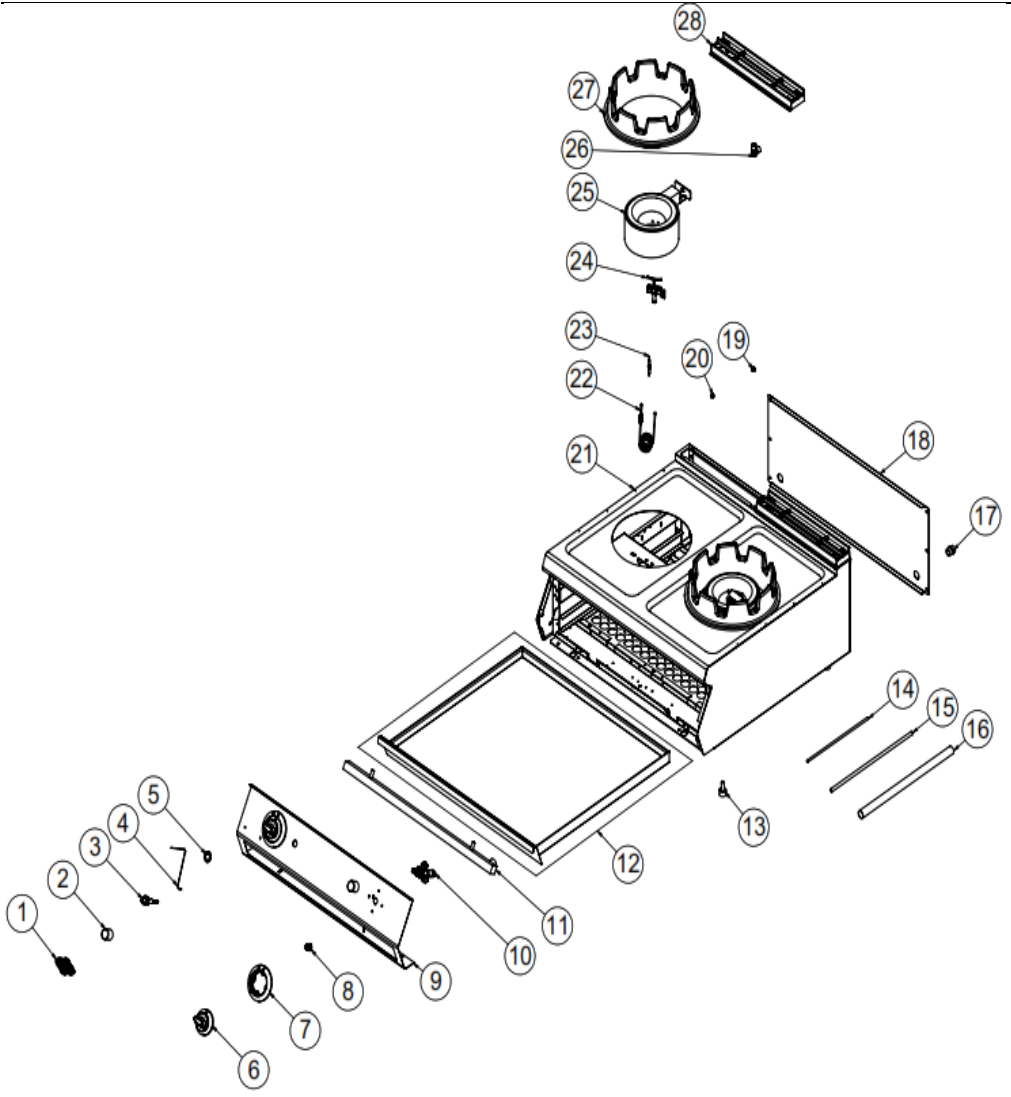
EMP.PLS.7WK010

I SPARE PART LIST-EXPLODING DRAWING

PRODUCT CODE: EMP.PLS.7WK010		
NO	PRODUCT NAME	P.CODE
1	TICKET	M.AKS-OZL-MTL-006
2	LIGHTER GUARD	M.GAZ--PIEZ-KRM
3	PIOZE LIGHTER Ø:18	M.GAZ-CKM-PIEZ-001
4	CABLE 500MM	M.GAZ-CKM-KBL-004
5	LIGHTER WASHER	YSC-KNX.PG7-LZ-0557
6	BUTTON	M.AKS-DGM-EMP-024
7	BUTTON BUFFER	M.AKS-DGM-EMP-016
8	BUTTON SOCKET 8 MM	M.AKS-DGM-SKT-001
9	FRONT PANEL	YSC-KNX.PG7-LZ-0443
10	GAS VALVE M8 THREADED	M.GAZ-VNA-ECA-002
11	GAS TANK	M.GAZ-DPO-PG-042
12	DRAWER	ARA-KNX.PG7-0017
13	M10*35 FOOT	JP.M.AKS-AYK-PLS-002
14	GAZ FLEKSI Ø6 MM 50 CM	M.GAZ-TES-SPR-034
15	GAS FLEX Ø10 MM 70 CM 3/8	M.GAZ-TES-SPR-015
16	1/2 -1/2 80 CM GAS FLEX	M.GAZ-TES-SPR-009
17	BACK COVER SHEET	JP.YSC-KNX.PG7-PN-0391
18	CONNECTION 1/2	JP.M.MEK-TES-SRI-014
19	INJECTOR M8*0.75 Ø 1.80 MM.	M.GAZ-ENJ-NG-006
20	INJECTOR M8*0.75 Ø 3.00 MM.	M.GAZ-ENJ-NG-009
21	CHASSIS	-
22	M8*1200 THERMOELEMENT NO:18	M.GAZ-TRL-003
23	M4 Spark Plug	M.GAZ-CKM-KBJI-003
24	THREE WRONG PILOTS (0.35)	M.GAZ.TES-SRI-003
25	BURNER	M.GAZ-BRL-BEK-007
26	UNION 1/4-3/8 BODY	M.GAZ-TES-SRI-018
27	BURNER GRILL	M.AKS-DKM-WOK-001
28	40 CM X 7 CM CHIMNEY	JP.M.AKS-DKM-KZN-013

GAS WOK COOKERS

I SPARE PART LIST-EXPLODING DRAWING



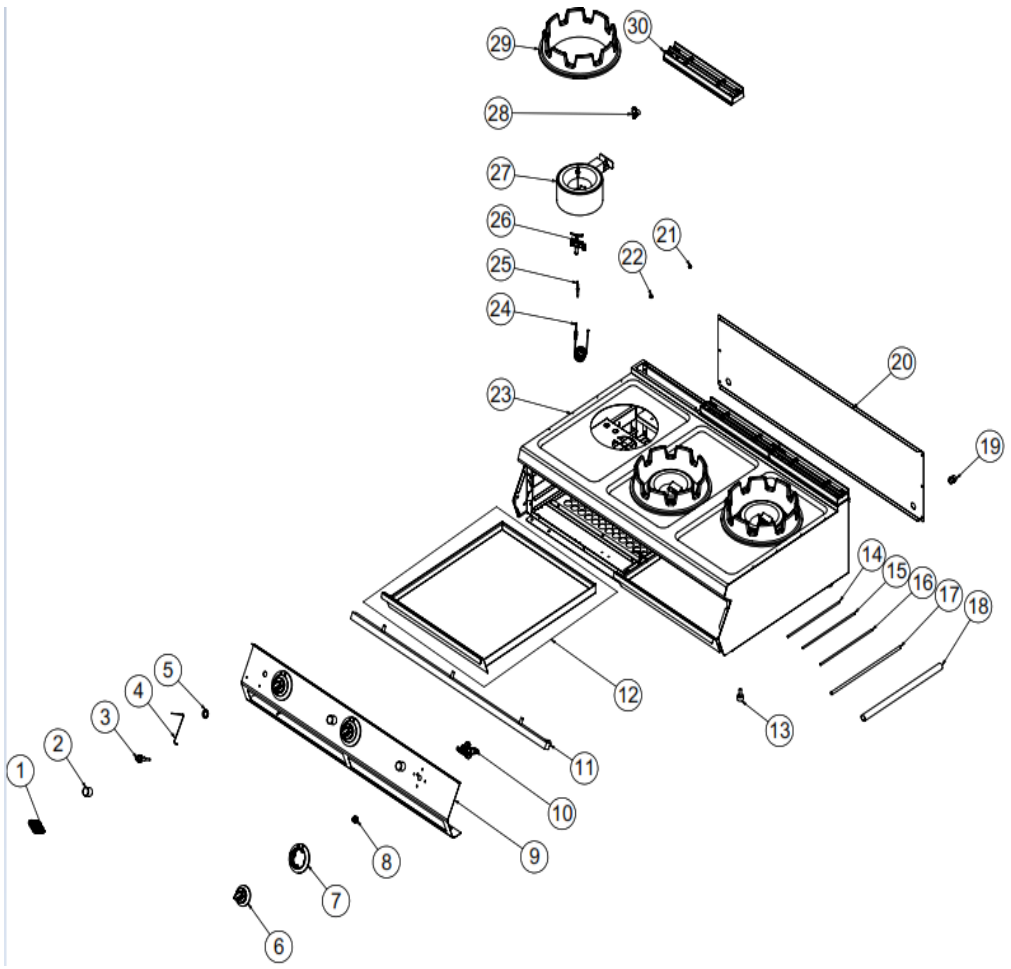
EMP.PLS.7WK020

I SPARE PART LIST-EXPLODING DRAWING

PRODUCT CODE: EMP.PLS.7WK020		
NO	PRODUCT NAME	P.CODE
1	TICKET	M.AKS-OZL-MTL-006
2	LIGHTER GUARD	M.GAZ--PIEZ-KRM
3	PIOZE LIGHTER Ø:18	M.GAZ-CKM-PIEZ-001
4	CABLE 500MM	M.GAZ-CKM-KBL-004
5	LIGHTER WASHER	YSC-KNX.PG7-LZ-0557
6	BUTTON	M.AKS-DGM-EMP-024
7	BUTTON BUFFER	M.AKS-DGM-EMP-016
8	BUTTON SOCKET 8 MM	M.AKS-DGM-SKT-001
9	FRONT PANEL	YSC-KNX.PG7-LZ-0446
10	GAS VALVE M8 THREADED	M.GAZ-VNA-ECA-002
11	GAS TANK	M.GAZ-DPO-PG-101
12	DRAWER	ARA-KNX.PG7-0019
13	M10*35 FOOT	JP.M.AKS-AYK-PLS-002
14	GAZ FLEKSİ Ø6 MM 50 CM	M.GAZ-TES-SPR-034
15	GAS FLEX Ø10 MM 70 CM 3/8	M.GAZ-TES-SPR-015
16	1/2 -1/2 80 CM GAS FLEX	M.GAZ-TES-SPR-009
17	CONNECTION 1/2	JP.M.MEK-TES-SRI-014
18	BACK SHEET METAL	YSC-KNX.PG7-PN-0398
19	INJECTOR M8*0.75 Ø 1.80 MM.	M.GAZ-ENJ-NG-006
20	INJECTOR M8*0.75 Ø 3.00 MM.	M.GAZ-ENJ-NG-009
21	CHASSIS	-
22	M8*1200 THERMOELEMENT NO:18	M.GAZ-TRL-003
23	M4 Spark Plug	M.GAZ-CKM-KBJI-003
24	THREE WRONG PILOTS (0.35)	M.GAZ.TES-SRI-003
25	BURNER	M.GAZ-BRL-BEK-007
26	UNION 1/4-3/8 BODY	M.GAZ-TES-SRI-018
27	BURNER GRILL	M.AKS-DKM-WOK-001
28	40 CM X 7 CM CHIMNEY	JP.M.AKS-DKM-KZN-013

GAS WOK COOKERS

I SPARE PART LIST-EXPLODING DRAWING



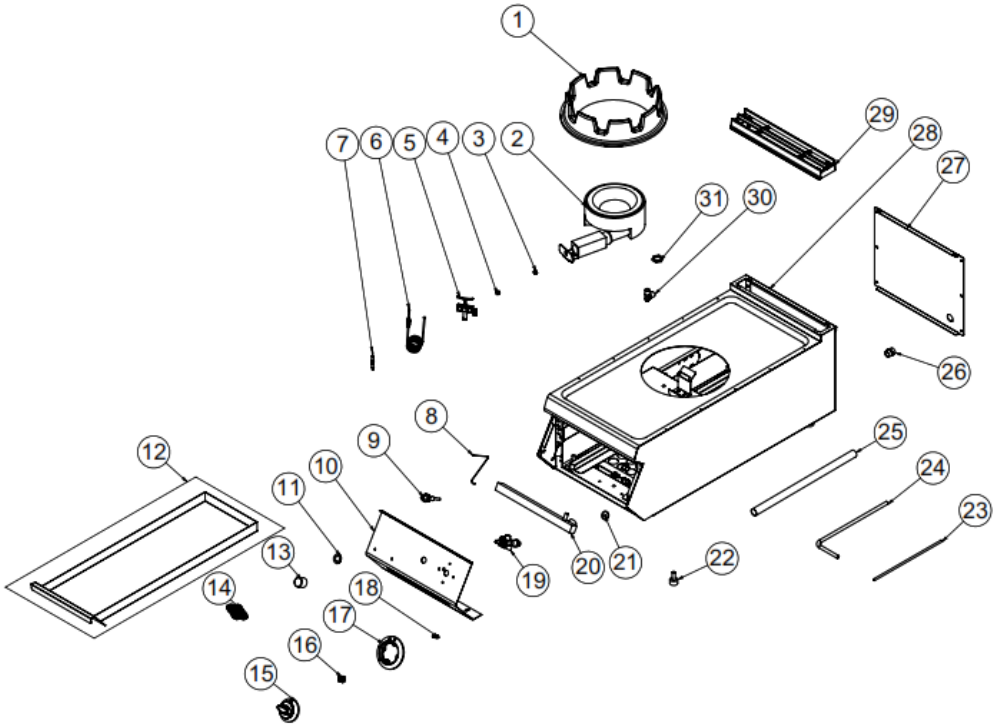
EMP.PLS.7WK030

I SPARE PART LIST-EXPLODING DRAWING

PRODUCT CODE: EMP.PLS.7WK030		
NO	PRODUCT NAME	P.CODE
1	TICKET	M.AKS-OZL-MTL-006
2	LIGHTER GUARD	M.GAZ--PIEZ-KRM
3	PIOZE LIGHTER Ø:18	M.GAZ-CKM-PIEZ-001
4	CABLE 500MM	M.GAZ-CKM-KBL-004
5	LIGHTER WASHER	YSC-KNX.PG7-LZ-0557
6	BUTTON	M.AKS-DGM-EMP-024
7	BUTTON BUFFER	M.AKS-DGM-EMP-016
8	BUTTON SOCKET 8 MM	M.AKS-DGM-SKT-001
9	FRONT PANEL	YSC-KNX.PG7-LZ-0447
10	GAS VALVE M8 THREADED	M.GAZ-VNA-ECA-002
11	GAS TANK	M.GAZ-DPO-PG-050
12	DRAWER	ARA-KNX.PG7-0021
13	M10*35 FOOT	JP.M.AKS-AYK-PLS-002
14	GAS FLEX Ø6 MM 60 CM	M.GAZ-TES-SPR-035
15	GAS FLEX Ø10 MM 60 CM 3/8	M.GAZ-TES-SPR-018
16	GAZ FLEKSI Ø6 MM 50 CM	M.GAZ-TES-SPR-034
17	GAS FLEX Ø10 MM 70 CM 3/8	M.GAZ-TES-SPR-015
18	1/2 -1/2 80 CM GAS FLEX	M.GAZ-TES-SPR-009
19	CONNECTION 1/2	JP.M.MEK-TES-SRI-014
20	BACK SHEET METAL	YSC-KNX.PG7-LZ-0435
21	INJECTOR M8*0.75 Ø 1.80 MM.	M.GAZ-ENJ-NG-006
22	INJECTOR M8*0.75 Ø 3.00 MM.	M.GAZ-ENJ-NG-009
23	CHASSIS	-
24	M8*1200 THERMOELEMENT NO:18	M.GAZ-TRL-003
25	M4 Spark Plug	M.GAZ-CKM-KBJI-003
26	THREE WRONG PILOTS (0.35)	M.GAZ.TES-SRI-003
27	BURNER	M.GAZ-BRL-BEK-007
28	UNION 1/4-3/8 BODY	M.GAZ-TES-SRI-018
29	BURNER GRILL	M.AKS-DKM-WOK-001
30	40 CM X 7 CM CHIMNEY	JP.M.AKS-DKM-KZN-013

GAS WOK COOKERS

I SPARE PART LIST-EXPLODING DRAWING



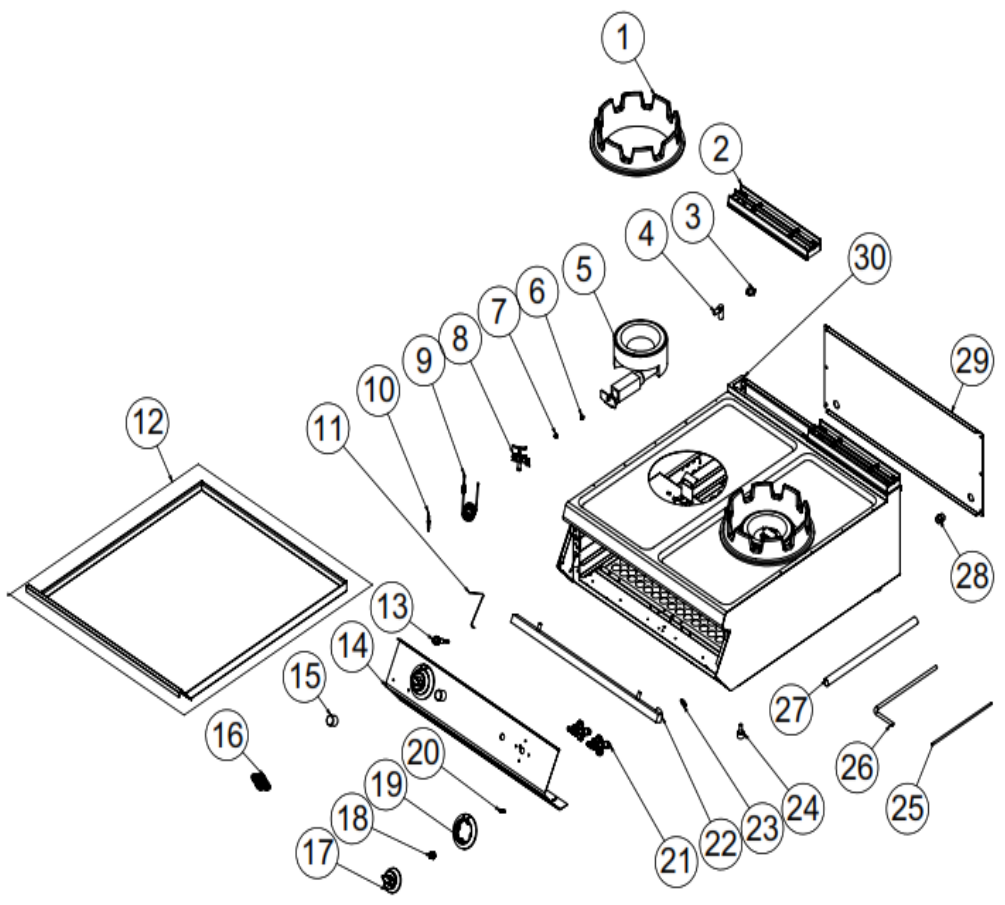
EMP.PLS.9WK010

I SPARE PART LIST-EXPLODING DRAWING

PRODUCT CODE: EMP.PLS.9WK010		
NO	PRODUCT NAME	P.CODE
1	BURNER GRILL	M.AKS-DKM-WOK-001
2	BURNER	M.GAZ-BRL-BEK-007
3	INJECTOR M8*0.75 Ø 1.80 MM.	M.GAZ-ENJ-NG-006
4	INJECTOR M8*0.75 Ø 3.00 MM.	M.GAZ-ENJ-NG-009
5	THREE WRONG PILOTS (0.35)	M.GAZ.TES-SRI-003
6	M8*1200 THERMOELEMENT NO:18	M.GAZ-TRL-003
7	M4 Spark Plug	M.GAZ-CKM-KBJI-003
8	CABLE 500MM	M.GAZ-CKM-KBL-004
9	PIOZE LIGHTER Ø:18	M.GAZ-CKM-PIEZ-001
10	FRONT PANEL	YSC-KNX.PG9-LZ-0764
11	LIGHTER WASHER	YSC-KNX.PG7-LZ-0557
12	DRAWER	ARA-KNX.PG9-0005
13	LIGHTER GUARD	M.GAZ--PIEZ-KRM
14	TICKET	M.AKS-OZL-MTL-006
15	BUTTON	M.AKS-DGM-EMP-024
16	BUTTON SOCKET 8 MM	M.AKS-DGM-SKT-001
17	BUTTON BUFFER	M.AKS-DGM-EMP-016
18	M4 FRAME SPRING	M.YAY-PG-004
19	GAS VALVE M8 THREADED	M.GAZ-VNA-ECA-002
20	ANGELED PIPE	M.GAZ-DPO-PG-042
21	GASKET	M.CNT-PLS-KLN-002
22	M10*35 FOOT	JP.M.AKS-AYK-PLS-002
23	FLEXIABLE GAS PIPEØ10 MM 80 CM	M.GAZ-TES-SPR-021
24	GAS FLEX Ø6 MM 70 CM	M.GAZ-TES-SPR-037
25	1/2 -1/2 80 CM GAS FLEX	M.GAZ-TES-SPR-009
26	CONNECTION 1/2	JP.M.MEK-TES-SRI-014
27	BACK COVER SHEET	JP.YSC-KNX.PG7-PN-0391
28	CHASSIS	-
29	40 CM X 7 CM CHIMNEY	JP.M.AKS-DKM-KZN-013
30	ELBOW 16*1.5/1/4	M.GAZ-TES-SRI-021
31	NUT	M.TRN-KNX-PG7-004

GAS WOK COOKERS

I SPARE PART LIST-EXPLODING DRAWING



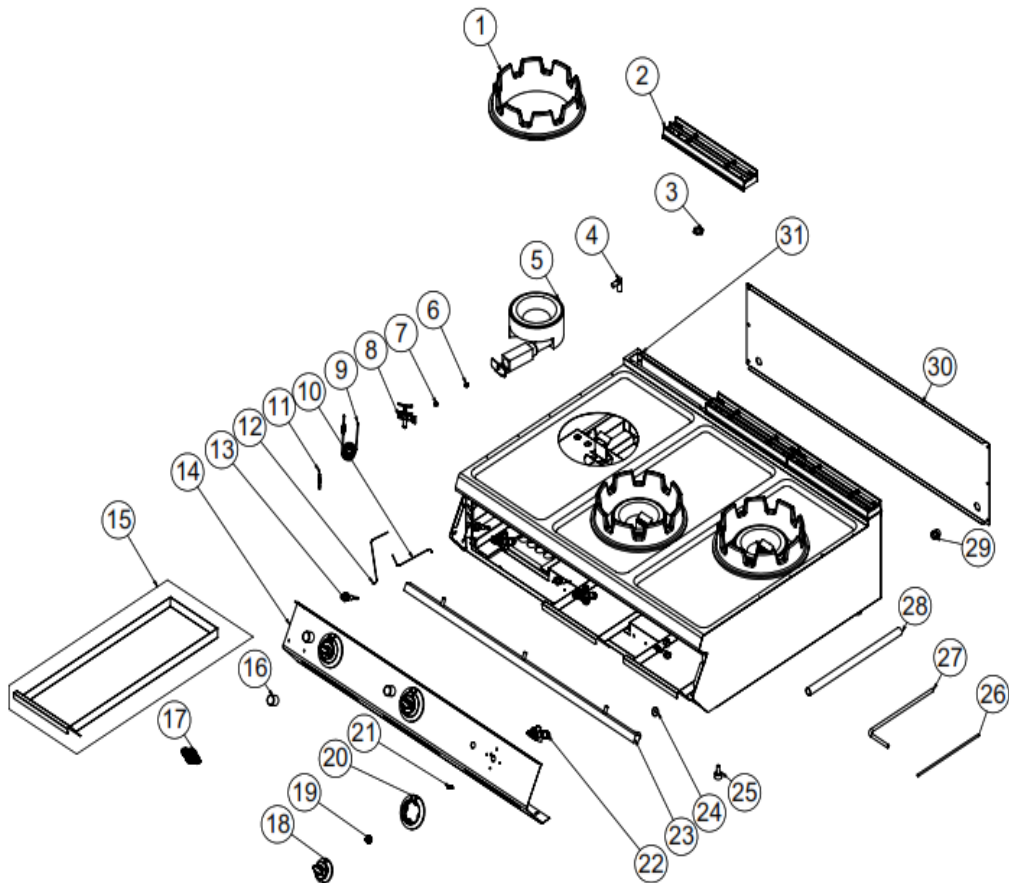
EMP.PLS.9WK020

I SPARE PART LIST-EXPLODING DRAWING

PRODUCT CODE: EMP.PLS.9WK020		
NO	PRODUCT NAME	P.CODE
1	BURNER GRILL	M.AKS-DKM-WOK-001
2	40 CM X 7 CM CHIMNEY	JP.M.AKS-DKM-KZN-013
3	NUT	M.TRN-KNX-PG7-004
4	ELBOW 16*1.5/1/4	M.GAZ-TES-SRI-021
5	BURNER	M.GAZ-BRL-BEK-007
6	INJECTOR M8*0.75 Ø 1.80 MM.	M.GAZ-ENJ-NG-006
7	INJECTOR M8*0.75 Ø 3.00 MM.	M.GAZ-ENJ-NG-009
8	THREE WRONG PILOTS (0.35)	M.GAZ.TES-SRI-003
9	M8*1200 THERMOELEMENT NO:18	M.GAZ-TRL-003
10	M4 Spark Plug	M.GAZ-CKM-KBJI-003
11	CABLE 500MM	M.GAZ-CKM-KBL-004
12	DRAWER	ARA-KNX.PG9-0006
13	PIOZE LIGHTER Ø:18	M.GAZ-CKM-PIEZ-001
14	FRONT PANEL	YSC-KNX.PG9-LZ-0765
15	LIGHTER GUARD	M.GAZ--PIEZ-KRM
16	TICKET	M.AKS-OZL-MTL-006
17	BUTTON	M.AKS-DGM-EMP-024
18	BUTTON SOCKET 8 MM	M.AKS-DGM-SKT-001
19	BUTTON BUFFER	M.AKS-DGM-EMP-016
20	M4 FRAME SPRING	M.YAY-PG-004
21	GAS VALVE M8 THREADED	M.GAZ-VNA-ECA-002
22	GAS TANK	M.GAZ-DPO-PG-043
23	GASKET	M.CNT-PLS-KLN-002
24	M10*35 FOOT	JP.M.AKS-AYK-PLS-002
25	FLEXIABLE GAS PIPEØ10 MM 80 CM 3/8	M.GAZ-TES-SPR-021
26	GAS FLEX Ø6 MM 70 CM	M.GAZ-TES-SPR-037
27	1/2 -1/2 80 CM GAS FLEX	M.GAZ-TES-SPR-009
28	CONNECTION 1/2	JP.M.MEK-TES-SRI-014
29	BACK SHEET METAL	YSC-KNX.PG7-PN-0398
30	CHASSIS	-

GAS WOK COOKERS

I SPARE PART LIST-EXPLODING DRAWING



EMP.PLS.9WK030

I SPARE PART LIST-EXPLODING DRAWING

PRODUCT CODE: EMP.PLS.9WK030		
NO	PRODUCT NAME	P.CODE
1	BURNER GRILL	M.AKS-DKM-WOK-001
2	40 CM X 7 CM CHIMNEY	JP.M.AKS-DKM-KZN-013
3	NUT	M.TRN-KNX-PG7-004
4	ELBOW 16*1.5/1/4	M.GAZ-TES-SRI-021
5	BURNER	M.GAZ-BRL-BEK-007
6	INJECTOR M8*0.75 Ø 1.80 MM.	M.GAZ-ENJ-NG-006
7	INJECTOR M8*0.75 Ø 3.00 MM.	M.GAZ-ENJ-NG-009
8	THREE WRONG PILOTS (0.35)	M.GAZ.TES-SRI-003
9	M8*1200 THERMOELEMENT NO:18	M.GAZ-TRL-003
10	CABLE 1000MM	M.GAZ-CKM-KBL-002
11	M4 Spark Plug	M.GAZ-CKM-KBJI-003
12	CABLE 500MM	M.GAZ-CKM-KBL-004
13	PIOZE LIGHTER Ø:18	M.GAZ-CKM-PIEZ-001
14	FRONT PANEL	YSC-KNX.PG9-LZ-0766
15	DRAWER	ARA-KNX.PG9-0007
16	LIGHTER GUARD	M.GAZ--PIEZ-KRM
17	TICKET	M.AKS-OZL-MTL-006
18	BUTTON	M.AKS-DGM-EMP-024
19	BUTTON SOCKET 8 MM	M.AKS-DGM-SKT-001
20	BUTTON BUFFER	M.AKS-DGM-EMP-016
21	M4 FRAME SPRING	M.YAY-PG-004
22	GAS VALVE M8 THREADED	M.GAZ-VNA-ECA-002
23	GAS TANK	M.GAZ-DPO-PG-050
24	GASKET	M.CNT-PLS-KLN-002
25	M10*35 FOOT	JP.M.AKS-AYK-PLS-002
26	1/2 -1/2 80 CM GAS FLEX	M.GAZ-TES-SPR-009
27	FLEXIABLE GAS PIPEØ10 MM 80 CM 3/8	M.GAZ-TES-SPR-021
28	GAS FLEX Ø6 MM 70 CM	M.GAZ-TES-SPR-037
29	CONNECTION 1/2	JP.M.MEK-TES-SRI-014
30	BACK SHEET METAL	YSC-KNX.PG7-LZ-0435
31	CHASSIS	-