

UNDER BENCH OVEN-ELECTRIC

CONTENTS

| | | |
|----------|---|----------------|
| A | GENERAL INFORMATION | Page 2 |
| A1 | PRODUCT DESCRIPTION..... | Page 3 |
| A2 | TECHNICAL INFORMATION | Page 3 |
| A3 | TRANSPORTATION..... | Page 4 |
| A4 | UNPACKING | Page 4 |
| B | INSTALLATION | Page 4 |
| C | SAFETY INSTRUCTIONS | Page 5 |
| D | OPERATION | Page 6 |
| E | CLEANING & MAINTENANCE..... | Page 7 |
| F | TROUBLESHOOTING | Page 8 |
| G | SPARE PART LIST- EXPLODING DRAWING | Page 9 |
| H | ELECTRIC CIRCUIT SCHEMA | Page 18 |

A GENERAL INFORMATION

Before installing the appliance, read operation and maintenance instructions carefully. Wrong installation and part changing may damage the product or may cause injury on people. These are not in our company's responsibility to damage the appliance intentionally, negligence, detriments because of disobeying instructions and regulations, wrong connections. Unauthorized intervention to appliance invalidates the warranty.

1. This instruction manual should be kept in a safe place for future reference.
2. **Installation should be made in accordance with ordinances and security rules of that country by a qualified service personnel.**
3. This appliance has to be used by trained person.
4. Please turn off the appliance immediately in the event of malfunction or failure. The appliance should be repaired only by authorized service personnel. Please demand original spare part.

UNDER BENCH OVEN-ELECTRIC

A1 PRODUCT DESCRIPTION

* The Professional Machine ,that provides high efficiency has been designed to be used in industrial kitchens

| Product Code | Dimensions (mm) | Weight (kg) | Packaging Dimensions (mm) |
|----------------|-----------------|-------------|---------------------------|
| EMP.PLS.9FRE01 | 800x790x550 | 70 | 840X850X650 |
| EMP.PLS.9FRE02 | 1200x790x550 | 90 | 1230X850X650 |
| EMP.PLS.9FRE03 | 1200x790x550 | 100 | 1230X850X650 |
| EMP.PLS.7FRE01 | 800X620X550 | 60 | 840X680X650 |
| EMP.PLS.7FRE02 | 1200X620X550 | 80 | 1230X680X650 |
| EMP.PLS.7FRE03 | 1200X620X550 | 90 | 1230X680X650 |

A2 TECHNICAL INFORMATION

| Product Code | Model | Electric Inlet | Cable (mm ²) | Power (KW) |
|----------------|---------------------------|----------------|--------------------------|------------|
| EMP.PLS.9FRE01 | Under bench oven-Electric | 5X2,5 | 9 | 2xGN 2/1 |
| EMP.PLS.9FRE02 | Under bench oven-Electric | 5X2,5 | 9 | 2xGN 2/1 |
| EMP.PLS.9FRE03 | Under bench oven-Electric | 5X4 | 15 | 2xGN 2/1 |
| EMP.PLS.7FRE01 | Under bench oven-Electric | 5X2,5 | 9 | 2xGN 2/1 |
| EMP.PLS.7FRE02 | Under bench oven-Electric | 5X2,5 | 9 | 2xGN 2/1 |
| EMP.PLS.7FRE03 | Under bench oven-Electric | 5X4 | 15 | 2xGN 2/1 |

A3 TRANSPORTATION

*This appliance can not be moved by hand from area to area. It must be moved on pallet with forklift truck.

A4 UNPACKING

*Please unpack the package according to the security codes and ordinances of current country and get rid from the pack. Parts which contacts with food are produced by stainless steel. All plastic parts are marked by material's symbol.

*Please check that all the parts of appliance had come completely and if they are damaged or not during the shipping.


B INSTALLATION

*Please place the product to straight and sturdy ground, please take necessary steps against possibility of overturn.

*Technician who will serve for installation and service for the appliance must be professional on this subject and must have installation and service licenses by the company.

*Connection to Electric Power Supply must be done by authorized person.

*Please be sure that the voltage connected to appliance must be equal with the voltage which is on appliance's label.

 This appliance must be connected to an earthed outlet in accordance with safety rules and standards.









*Appliance's earthing must be connected to earthing line on panel which is nearest to electric installation.

*Connection to the main fuse and leak current fuse must be done in accordance with the current regulations.

*If the location where electric ranges with oven placed is covered with nonflammable heat insulation material, the distance between them must be 5 cm. Otherwise it should be at least 20 cm. The appliance shouldn't be operated under chimney hood.

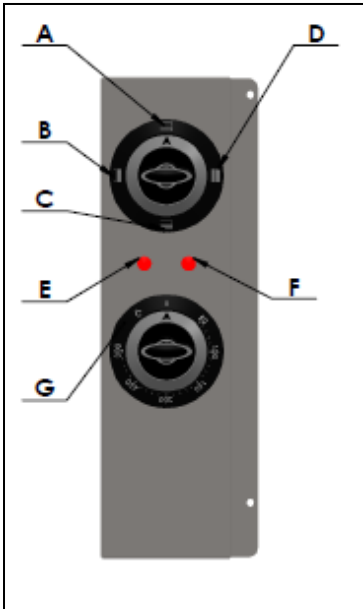
UNDER BENCH OVEN-ELECTRIC

C SAFETY INSTRUCTIONS

-  *Do not use the appliance in insufficient lighted place.
-  *Do not touch the moving attachments while the appliance operates.
-  *Do not install the appliance in the presence of flammable or explosive materials.
-  *Do not operate the appliance when the machine is empty.
-  *Do not load so less or more than appliance's capacity.
-  *Do not attempt to use the appliance without suitable protective equipments.
-  *Because of any reason if there is a fire or flame flare where the appliance is used, turn off all gas valves and electric contactor switch quickly and use fire extinguisher. Never use water to extinguish the fire.
-  *All the damages because of not having earthing connection will not be on warranty.

D OPERATION

* Control Panel:



- A : Oven OFF position
- B : Oven upper heating
- C : Oven lower heating
- D : Oven upper-lower heating
- E : heating setting lamp
- F : Lower –upper setting lamp
- G : Oven heat setting button

* Operating:

- Plug in the appliance.
- Put the cooker on the range.
- Adjust heat setting buttons to desired temperature
- The range reaches the desired temperature and starts to operate
- When the range's temperature is reduced, indicator lamp signals and range's temperature reaches to desired temperature again.
- As soon as the oven temperature drops indicator (indicator) lights up and reaches the oven temperature indicator value again.
- After operation is completed, switch heat setting buttons to (0) position and unplug the appliance.

UNDER BENCH OVEN-ELECTRIC

E CLEANING & MAINTENANCE

➤ **CLEANING AND MAINTENANCE AFTER EVERY USE**

- Always turn off the appliance and disconnect from the power supply before cleaning.
- Clean the outer surface of the appliance with a wet cloth and chrome shiner.
- Do not use abrasive cleaning chemicals as these can leave harmful residues.
- Do not clean the appliance by spraying water directly, otherwise electric motor may get damaged.
- Clean the oven trays with hot water and then dry after every use.

➤ **PERIODIC CLEANING AND MAINTENANCE**

- Maintenance should be done by qualified person.
- Get the periodic maintenance of the appliance once in every 15 days.
- Check the heater's electric connection in periodic times.
- Maintenance of the appliance's contactor should be done by compressed air according to frequency of use.

F TROUBLESHOOTING

THE APPLIANCE DOESN'T OPERATE

1. Check if the appliance is plugged in.
2. Check the electrical connections and voltage.

THE APPLIANCE DOESN'T COOK WELL

1. Check if it is operated at required heat or not.

THE APPLIANCE STOPPED

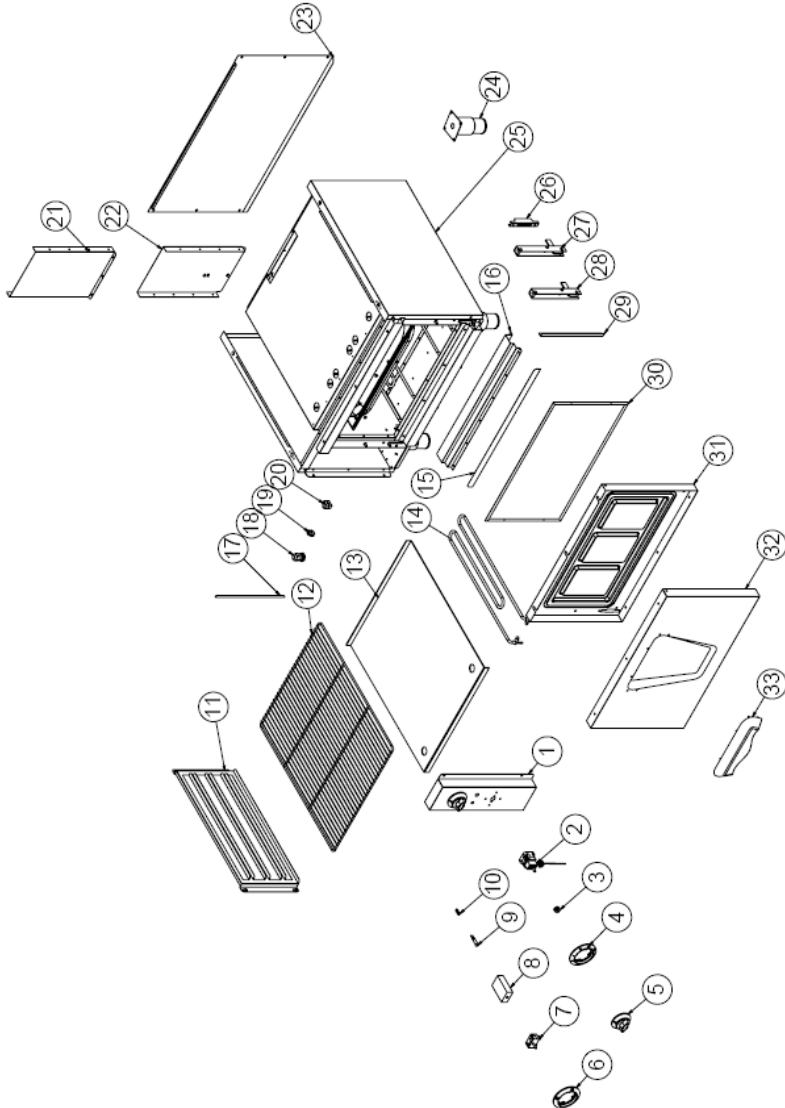
1. The appliance can stop due to low voltage. In this situation check the voltage.

- If cooking at electric ranges with oven is not done at suitable quality
- If any function of security doesn't work
 - Do not use the appliance.

***If these problems are still going on, contact with our authorized services.**

UNDER BENCH OVEN-ELECTRIC

G YEDEK PARÇA LİSTESİ-DEMONTE GÖRÜNÜŞÜ

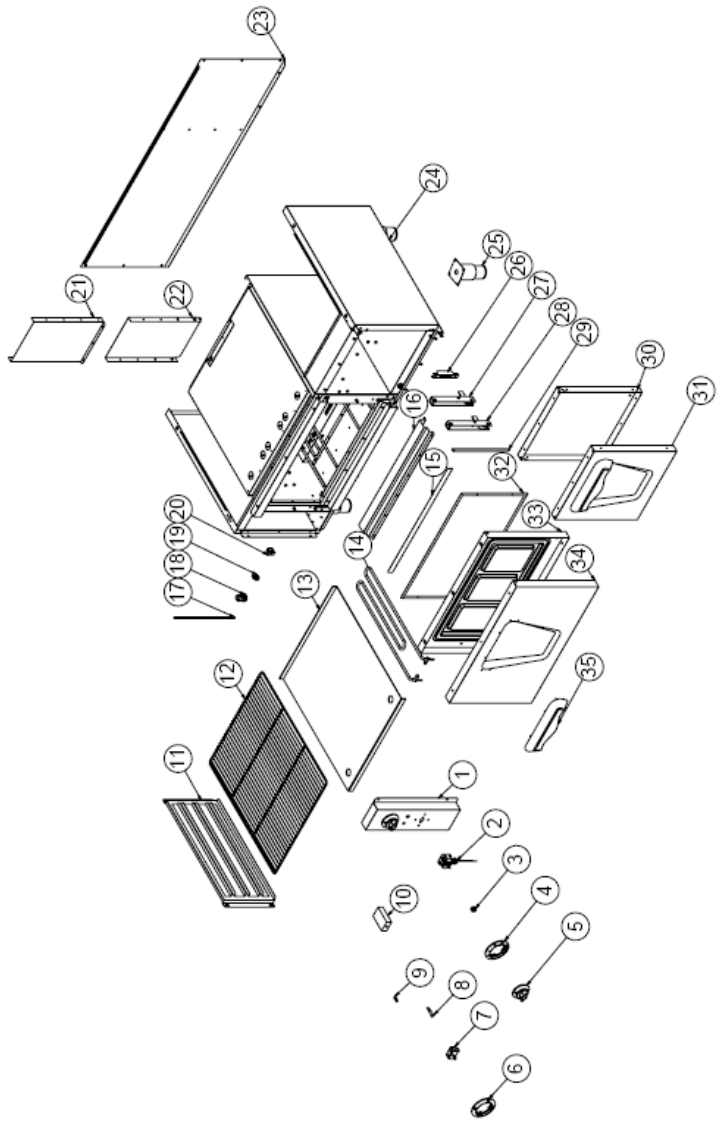


G SPARE PART LIST-EXPLODING DRAWING

| PRODUCT CODE: EMP.PLS.7FRE01 | | |
|------------------------------|-------------------------|-----------------------|
| NO | PRODUCT NAME | P.CODE |
| 1 | COVER SIDE SHEET | YSC-KNX.PG7-PN-0565 |
| 2 | 50-300 °C THERMOSTAT | M.ELK-MEK-TRM3-001 |
| 3 | BUTTON SOCKET 6 MM | M.AKS-DGM-SKT-002 |
| 4 | 50-300 °C BUTTON BUFFER | M.AKS-DGM-EMP-017 |
| 5 | BUTTON | M.AKS-DGM-EMP-024 |
| 6 | BUTTON BUFFER | M.AKS-DGM-EMP-019 |
| 7 | SWITCH 0-1 | M.ELK-SLT-EGO-005 |
| 8 | 0-3 STAGE SWITCH | M.ELK-SLT-EGO-004 |
| 9 | SIGNAL LAMP | M.ELK-LMB-SNY-002 |
| 10 | M4 FRAME SPRING | M.YAY-PG-004 |
| 11 | SHELF SHEET METAL | YSC-KNX.PG7-LZ-0494 |
| 12 | WIRE SHELF 650*530 MM | M.AKS-SPT-TEL-008 |
| 13 | FLOOR SHEET | YSC-KNX.PG7-LZ-0525 |
| 14 | 230V 1500W RESISTANCE | M.ELK-RZS-BRU-KFR-007 |
| 15 | UPPER ROVING SHEET | YSC-KNX.PG7-PN-0474 |
| 16 | UPPER FINISH SHEET | YSC-KNX.PG9-PN-0566 |
| 17 | CABLE PIPE | YBR-KNX.PG7-KS-0012 |
| 18 | PG-16 CABLE FITTING | JP.M.ELK-RKR-PLS-001 |
| 19 | NO:2 25 MM TERMINAL | M.ELK-KLM-RKL-4*4-SRY |
| 20 | TERMINAL | M.ELK-KLM-PRS-001 |
| 21 | CHIMNEY INNER SHEET | YSC-KNX.PG7-PN-0650 |
| 22 | CHIMNEY OUTER SHEET | YSC-KNX.PG7-PN-0649 |
| 23 | BACK SHEET METAL | YSC-KNX.PG7-LZ-0667 |
| 24 | 15 CM LEG | M.AKS-AYK-INX-001 |
| 25 | CHASSIS | - |
| 26 | JOINT RESISTANCE | M.AKS-MNT-KZN-004 |
| 27 | HINGE | M.AKS-MNT-KZN-003 |
| 28 | HINGE | M.AKS-MNT-KZN-002 |
| 29 | SIDE WIRE SHEET | YSC-KNX.PG7-PN-0475 |
| 30 | GASKET | HCN-SLK-PG-001 |
| 31 | COVER INTERNAL SHEET | YSC-KNX.PG7-LZ-0695 |
| 32 | COVER SHEET | YSC-KNX.PG7-LZ-0920 |
| 33 | HANDLE | M.AKS-KLP-LUX-004 |

UNDER BENCH OVEN-ELECTRIC

G SPARE PART LIST-EXPLODING DRAWING



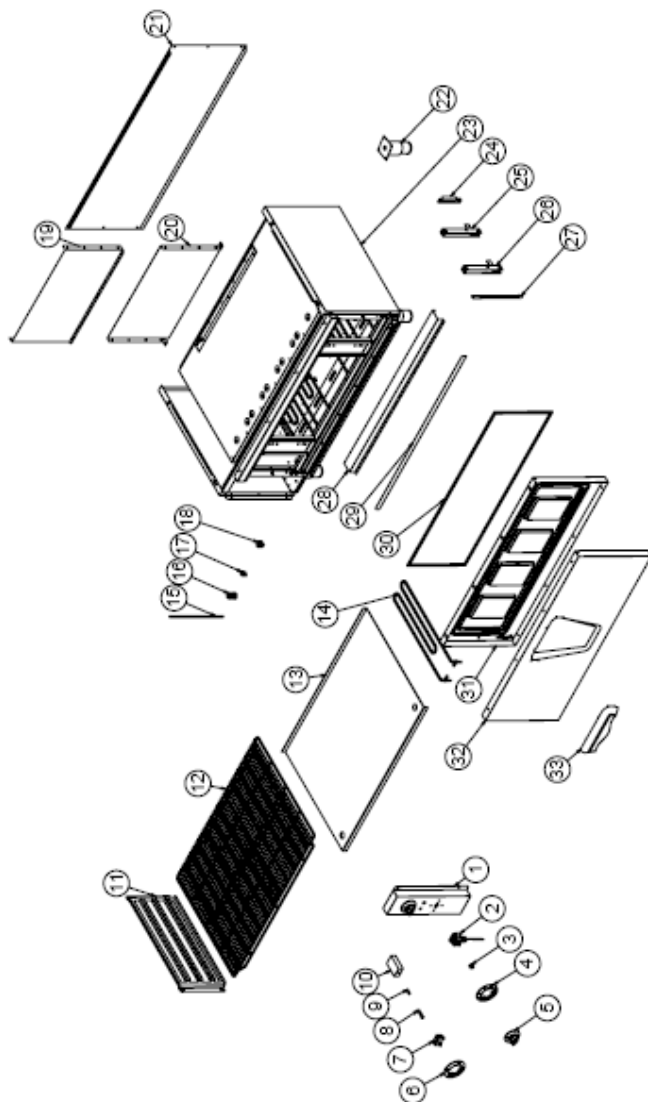
EMP.PLS.7FRE020

G SPARE PART LIST-EXPLODING DRAWING

| PRODUCT CODE: EMP.PLS.7FRE02 | | |
|-------------------------------------|-------------------------|-----------------------|
| NO | PRODUCT NAME | P.CODE |
| 1 | COVER SIDE SHEET | YSC-KNX.PG7-PN-0565 |
| 2 | 50-300 °C THERMOSTAT | M.ELK-MEK-TRM3-001 |
| 3 | BUTTON SOCKET 6 MM | M.AKS-DGM-SKT-002 |
| 4 | 50-300 °C BUTTON BUFFER | M.AKS-DGM-EMP-017 |
| 5 | BUTTON | M.AKS-DGM-EMP-024 |
| 6 | BUTTON BUFFER | M.AKS-DGM-EMP-019 |
| 7 | SWITCH 0-1 | M.ELK-SLT-EGO-005 |
| 8 | SIGNAL LAMP | M.ELK-LMB-SNY-002 |
| 9 | M4 FRAME SPRING | M.YAY-PG-004 |
| 10 | 0-3 STAGE SWITCH | M.ELK-SLT-EGO-004 |
| 11 | SHELF SHEET METAL | YSC-KNX.PG7-LZ-0494 |
| 12 | WIRE SHELF 650*530 MM | M.AKS-SPT-TEL-008 |
| 13 | FLOOR SHEET | YSC-KNX.PG7-LZ-0525 |
| 14 | 230V 1500W RESISTANCE | M.ELK-RZS-BRU-KFR-007 |
| 15 | UPPER ROVING SHEET | YSC-KNX.PG7-PN-0474 |
| 16 | UPPER FINISH SHEET | YSC-KNX.PG9-PN-0566 |
| 17 | CABLE PIPE | YBR-KNX.PG7-KS-0012 |
| 18 | PG-16 CABLE FITTING | JP.M.ELK-RKR-PLS-001 |
| 19 | NO:2 25 MM TERMINAL | M.ELK-KLM-RKL-4*4-SRY |
| 20 | TERMINAL | M.ELK-KLM-PRS-001 |
| 21 | CHIMNEY INNER SHEET | YSC-KNX.PG7-PN-0650 |
| 22 | CHIMNEY OUTER SHEET | YSC-KNX.PG7-PN-0649 |
| 23 | BACK SHEET METAL | YSC-KNX.PG7-PN-0506 |
| 24 | CHASSIS | - |
| 25 | 15 CM LEG | M.AKS-AYK-INX-001 |
| 26 | JOINT RESISTANCE | M.AKS-MNT-KZN-004 |
| 27 | HINGE | M.AKS-MNT-KZN-003 |
| 28 | HINGE | M.AKS-MNT-KZN-002 |
| 29 | SIDE WIRE SHEET | YSC-KNX.PG7-PN-0475 |
| 30 | COVER INTERNAL SHEET | YSC-KNX.PG7-PN-0456 |
| 31 | COVER OUTER SHEET | YSC-KNX.PG7-LZ-0488 |
| 32 | GASKET | HCN-SLK-PG-001 |
| 33 | COVER INTERNAL SHEET | YSC-KNX.PG7-LZ-0695 |
| 34 | COVER SHEET | YSC-KNX.PG7-LZ-0920 |
| 35 | HANDLE | M.AKS-KLP-LUX-004 |

UNDER BENCH OVEN-ELECTRIC

G SPARE PART LIST-EXPLODING DRAWING



EMP.PLS.7FRE030

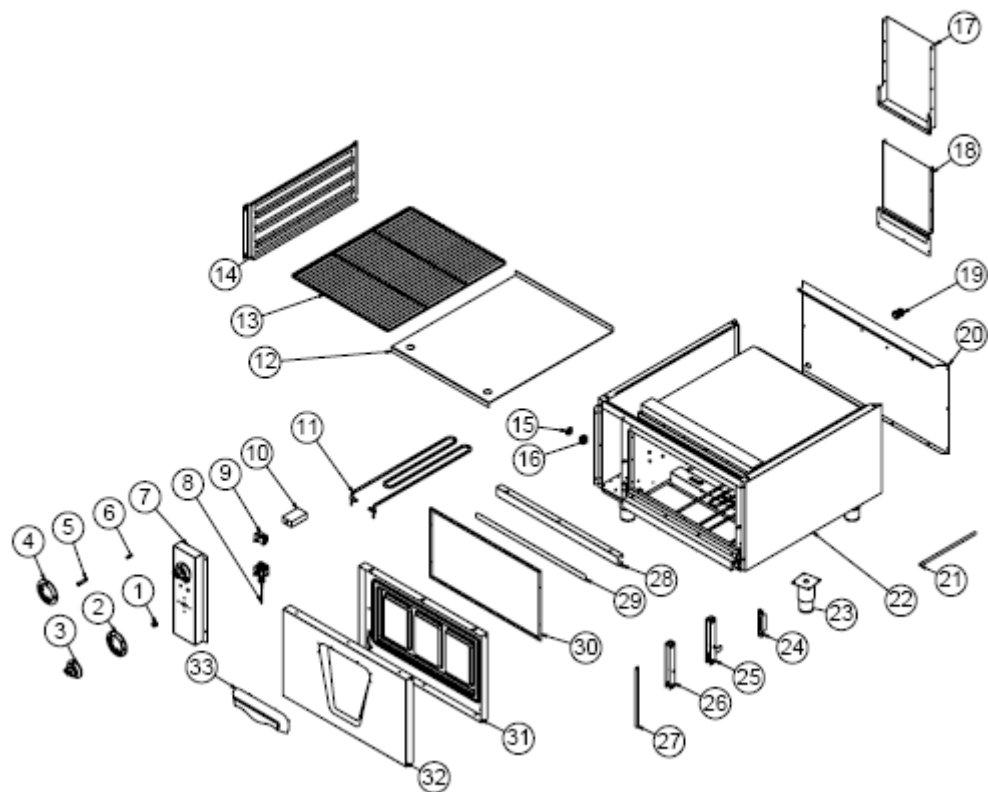
G SPARE PART LIST-EXPLODING DRAWING

PRODUCT CODE: EMP.PLS.7FRE03

| NO | PRODUCT NAME | P.CODE |
|----|-------------------------|-----------------------|
| 1 | COVER SIDE SHEET | YSC-KNX.PG7-PN-0565 |
| 2 | 50-300 °C THERMOSTAT | M.ELK-MEK-TRM3-001 |
| 3 | BUTTON SOCKET 6 MM | M.AKS-DGM-SKT-002 |
| 4 | 50-300 °C BUTTON BUFFER | M.AKS-DGM-EMP-017 |
| 5 | BUTTON | M.AKS-DGM-EMP-024 |
| 6 | BUTTON BUFFER | M.AKS-DGM-EMP-019 |
| 7 | SWITCH 0-1 | M.ELK-SLT-EGO-005 |
| 8 | SIGNAL LAMP | M.ELK-LMB-SNY-002 |
| 9 | M4 FRAME SPRING | M.YAY-PG-004 |
| 10 | 0-3 STAGE SWITCH | M.ELK-SLT-EGO-004 |
| 11 | SHELF SHEET METAL | YSC-KNX.PG7-LZ-0494 |
| 12 | 930*650 GRILL | M.AKS-SPT-TEL-012 |
| 13 | FLOOR SHEET | YSC-KNX.PG7-LZ-0526 |
| 14 | 230V 1500W RESISTANCE | M.ELK-RZS-BRU-KFR-007 |
| 15 | CABLE PIPE | YBR-KNX.PG7-KS-0012 |
| 16 | PG-16 CABLE FITTING | JP.M.ELK-RKR-PLS-001 |
| 17 | NO:2 25 MM TERMINAL | M.ELK-KLM-RKL-4*4-SRY |
| 18 | TERMINAL | M.ELK-KLM-PRS-001 |
| 19 | CHIMNEY INNER SHEET | YSC-KNX.PG7-PN-0523 |
| 20 | CHIMNEY OUTER SHEET | YSC-KNX.PG7-PN-0522 |
| 21 | BACK SHEET METAL | YSC-KNX.PG7-PN-0532 |
| 22 | 15 CM LEG | M.AKS-AYK-INX-001 |
| 23 | CHASSIS | - |
| 24 | JOINT RESISTANCE | M.AKS-MNT-KZN-004 |
| 25 | HINGE | M.AKS-MNT-KZN-003 |
| 26 | HINGE | M.AKS-MNT-KZN-002 |
| 27 | SIDE WIRE SHEET | YSC-KNX.PG7-PN-0475 |
| 28 | RESISTANCE COVER SHEET | YSC-KNX.PG9-LZ-0695 |
| 29 | UPPER ROVING SHEET | YSC-KNX.PG7-PN-0524 |
| 30 | GASKET | HCN-SLK-PG-001 |
| 31 | COVER INTERNAL SHEET | YSC-KNX.PG7-LZ-1130 |
| 32 | COVER OUTER SHEET | YSC-KNX.PG7-LZ-1127 |
| 33 | HANDLE | M.AKS-KLP-LUX-004 |

UNDER BENCH OVEN-ELECTRIC

G SPARE PART LIST-EXPLODING DRAWING



EMP.PLS.9FRE010

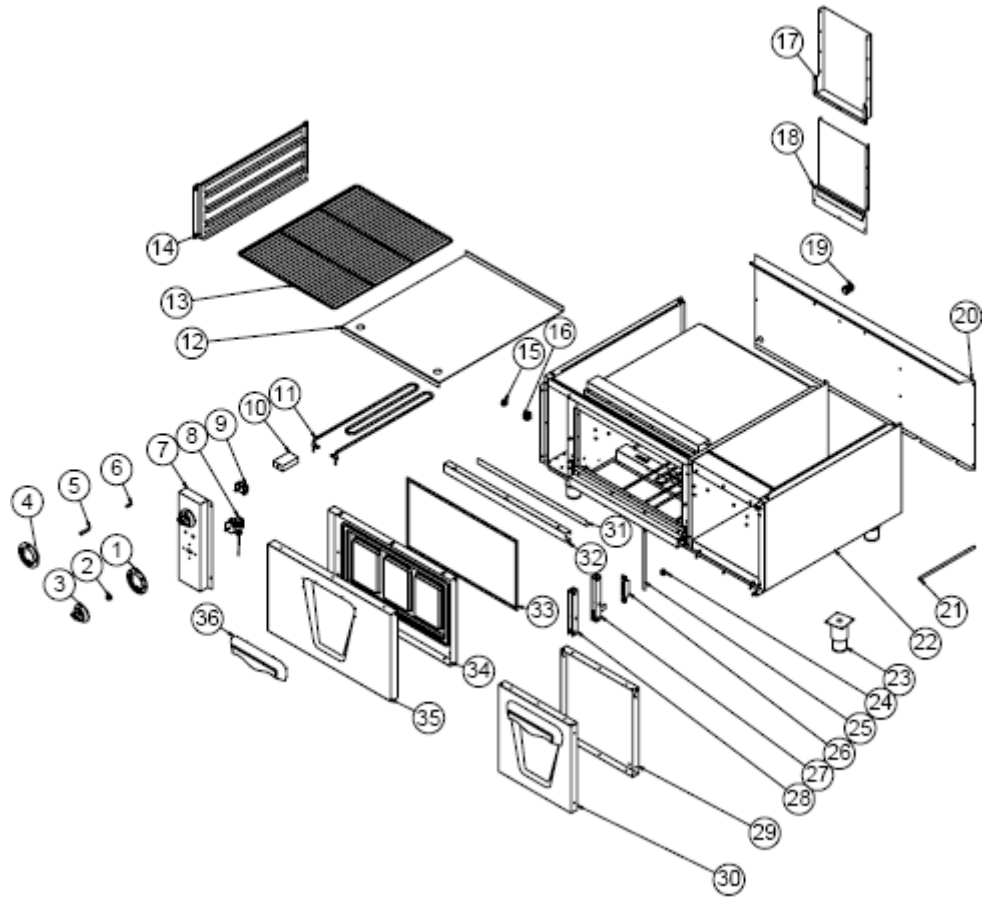
G SPARE PART LIST-EXPLODING DRAWING

PRODUCT CODE: EMP.PLS.9FRE01

| NO | PRODUCT NAME | P.CODE |
|----|----------------------------------|-----------------------|
| 1 | BUTTON SOCKET 6 MM | M.AKS-DGM-SKT-002 |
| 2 | 50-300 °C BUTTON BUFFER | M.AKS-DGM-EMP-017 |
| 3 | BUTTON | M.AKS-DGM-EMP-024 |
| 4 | BUTTON BUFFER | M.AKS-DGM-EMP-019 |
| 5 | SIGNAL LAMP | M.ELK-LMB-SNY-002 |
| 6 | M4 FRAME SPRING | M.YAY-PG-004 |
| 7 | COVER SIDE SHEET | YSC-KNX.PG7-PN-0565 |
| 8 | 50-300 °C THERMOSTAT | M.ELK-MEK-TRM3-001 |
| 9 | SWITCH 0-1 | M.ELK-SLT-EGO-005 |
| 10 | 0-3 STAGE SWITCH | M.ELK-SLT-EGO-004 |
| 11 | 230V 1500W RESISTANCE | M.ELK-RZS-BRU-KFR-007 |
| 12 | FLOOR SHEET | YSC-KNX.PG9-LZ-0538 |
| 13 | WIRE SHELF 650*530 MM | M.AKS-SPT-TEL-008 |
| 14 | SHELF SHEET METAL | YSC-KNX.PG7-LZ-0494 |
| 15 | NO:2 25 MM TERMINAL | M.ELK-KLM-RKL-4*4-SRY |
| 16 | TERMINAL | M.ELK-KLM-PRS-001 |
| 17 | CHIMNEY OUTER SHEET | YSC-KNX.PG9-PN-0554 |
| 18 | CHIMNEY INNER SHEET | YSC-KNX.PG9-PN-0555 |
| 19 | PG-16 CABLE FITTING | JP.M.ELK-RKR-PLS-001 |
| 20 | BACK SHEET METAL | YSC-KNX.PG9-PN-0466 |
| 21 | CABLE PIPE | YBR-KNX.PG7-KS-0012 |
| 22 | CHASSIS | - |
| 23 | 15 CM LEG | M.AKS-AYK-INX-001 |
| 24 | JOINT RESISTANCE | M.AKS-MNT-KZN-004 |
| 25 | HINGE | M.AKS-MNT-KZN-002 |
| 26 | HINGE | M.AKS-MNT-KZN-003 |
| 27 | SIDE WIRE SHEET | YSC-KNX.PG7-PN-0475 |
| 28 | COVER INSIDE UPPER SUPPORT SHEET | YSC-KNX.PG7-LZ-0711 |
| 29 | UPPER ROVING SHEET | YSC-KNX.PG7-PN-0474 |
| 30 | GASKET | HCN-SLK-PG-001 |
| 31 | COVER INTERNAL SHEET | YSC-KNX.PG7-LZ-0695 |
| 32 | COVER SHEET | YSC-KNX.PG7-LZ-0920 |
| 33 | HANDLE | M.AKS-KLP-LUX-004 |

UNDER BENCH OVEN-ELECTRIC

G SPARE PART LIST-EXPLODING DRAWING



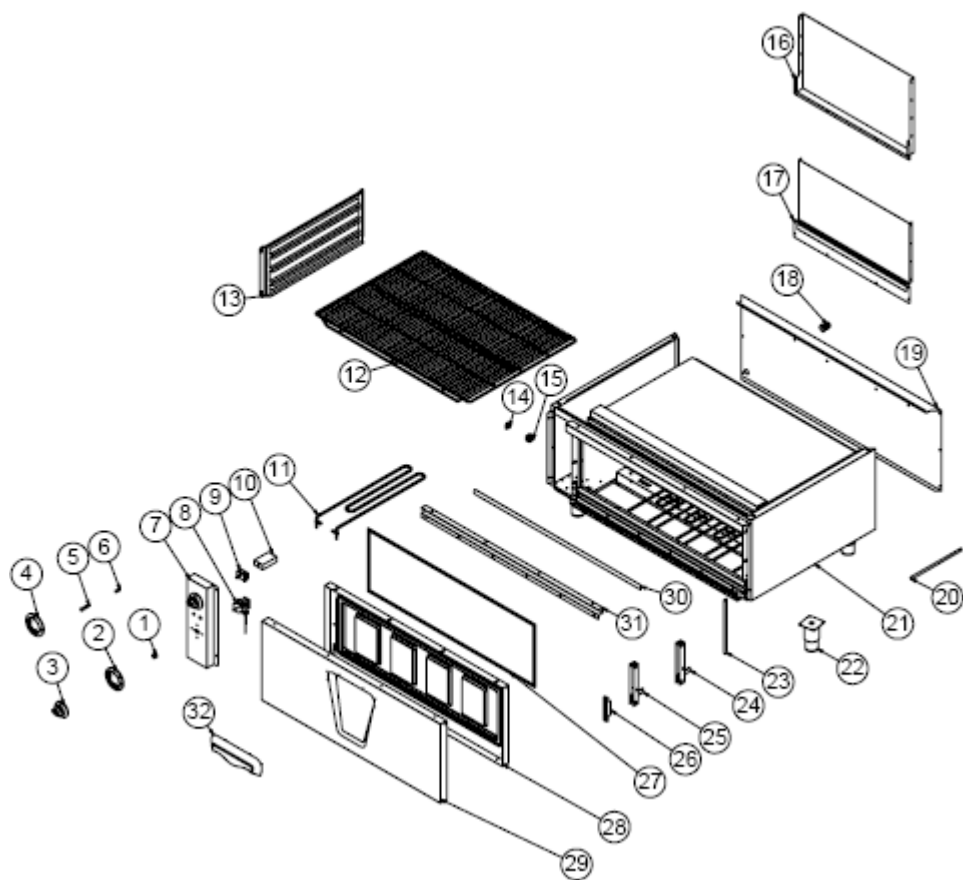
EMP.PLS.9FRE02

G SPARE PART LIST-EXPLODING DRAWING

| PRODUCT CODE: EMP.PLS.9FRE02 | | |
|------------------------------|----------------------------------|-----------------------|
| NO | PRODUCT NAME | P.CODE |
| 1 | 50-300 °C BUTTON BUFFER | M.AKS-DGM-EMP-017 |
| 2 | BUTTON SOCKET 6 MM | M.AKS-DGM-SKT-002 |
| 3 | BUTTON | M.AKS-DGM-EMP-024 |
| 4 | BUTTON BUFFER | M.AKS-DGM-EMP-019 |
| 5 | SIGNAL LAMP | M.ELK-LMB-SNY-002 |
| 6 | M4 FRAME SPRING | M.YAY-PG-004 |
| 7 | COVER SIDE SHEET | YSC-KNX.PG7-PN-0565 |
| 8 | 50-300 °C THERMOSTAT | M.ELK-MEK-TRM3-001 |
| 9 | SWITCH 0-1 | M.ELK-SLT-EGO-005 |
| 10 | 0-3 STAGE SWITCH | M.ELK-SLT-EGO-004 |
| 11 | 230V 1500W RESISTANCE | M.ELK-RZS-BRU-KFR-007 |
| 12 | FLOOR SHEET | YSC-KNX.PG9-LZ-0538 |
| 13 | WIRE SHELF 650*530 MM | M.AKS-SPT-TEL-008 |
| 14 | SHELF SHEET METAL | YSC-KNX.PG7-LZ-0494 |
| 15 | NO:2 25 MM TERMINAL | M.ELK-KLM-RKL-4*4-SRY |
| 16 | TERMINAL | M.ELK-KLM-PRS-001 |
| 17 | CHIMNEY OUTER SHEET | YSC-KNX.PG9-PN-0554 |
| 18 | CHIMNEY INNER SHEET | YSC-KNX.PG9-PN-0555 |
| 19 | PG-16 CABLE FITTING | JP.M.ELK-RKR-PLS-001 |
| 20 | BACK SHEET METAL | YSC-KNX.PG9-LZ-0772 |
| 21 | CABLE PIPE | YBR-KNX.PG7-KS-0012 |
| 22 | CHASSIS | - |
| 23 | 15 CM LEG | M.AKS-AYK-INX-001 |
| 24 | ∅ 22*7 MM MAGNET | M.MIK-PG-001 |
| 25 | SIDE WIRE SHEET | YSC-KNX.PG7-PN-0475 |
| 26 | JOINT RESISTANCE | M.AKS-MNT-KZN-004 |
| 27 | HINGE | M.AKS-MNT-KZN-002 |
| 28 | HINGE | M.AKS-MNT-KZN-003 |
| 29 | COVER INTERNAL SHEET | YSC-KNX.PG7-PN-0456 |
| 30 | COVER OUTER SHEET | YSC-KNX.PG7-LZ-0488 |
| 31 | UPPER ROVING SHEET | YSC-KNX.PG7-PN-0474 |
| 32 | COVER INSIDE UPPER SUPPORT SHEET | YSC-KNX.PG7-LZ-0711 |
| 33 | GASKET | HCN-SLK-PG-001 |
| 34 | COVER INTERNAL SHEET | YSC-KNX.PG7-LZ-0695 |
| 35 | COVER SHEET | YSC-KNX.PG7-LZ-0920 |
| 36 | HANDLE | M.AKS-KLP-LUX-004 |

UNDER BENCH OVEN-ELECTRIC

G SPARE PART LIST-EXPLODING DRAWING



EMP.PLS.9FRE03

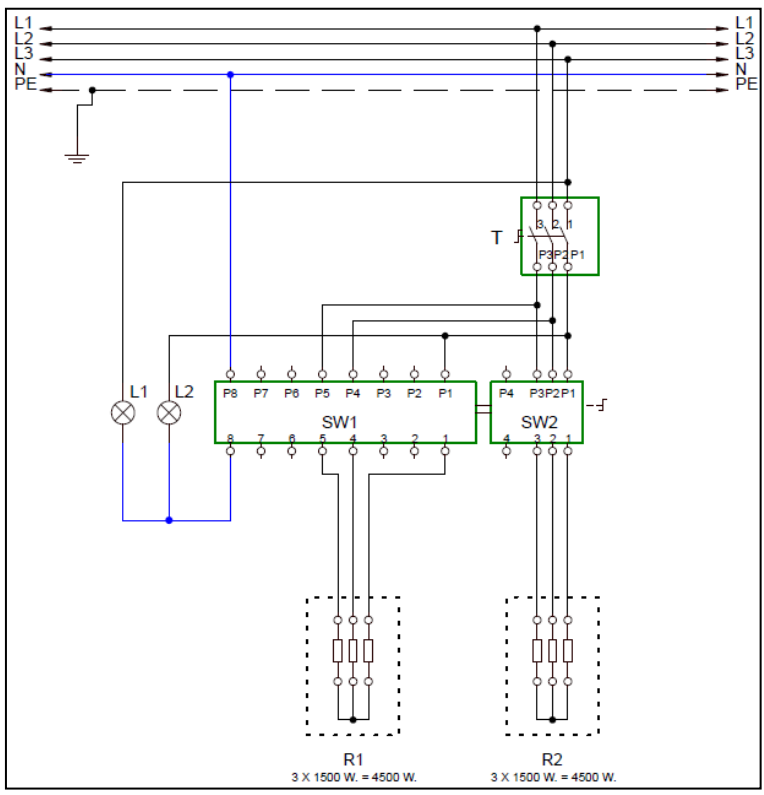
G SPARE PART LIST-EXPLODING DRAWING

PRODUCT CODE : EMP.PLS.9FRE03

| NO | PRODUCT NAME | P.CODE |
|----|----------------------------------|-----------------------|
| 1 | BUTTON SOCKET 6 MM | M.AKS-DGM-SKT-002 |
| 2 | 50-300 °C BUTTON BUFFER | M.AKS-DGM-EMP-017 |
| 3 | BUTTON | M.AKS-DGM-EMP-024 |
| 4 | BUTTON BUFFER | M.AKS-DGM-EMP-019 |
| 5 | SIGNAL LAMP | M.ELK-LMB-SNY-002 |
| 6 | M4 FRAME SPRING | M.YAY-PG-004 |
| 7 | COVER SIDE SHEET | YSC-KNX.PG7-PN-0565 |
| 8 | 50-300 °C THERMOSTAT | M.ELK-MEK-TRM3-001 |
| 9 | SWITCH 0-1 | M.ELK-SLT-EGO-001 |
| 10 | 0-3 STAGE SWITCH | M.ELK-SLT-EGO-004 |
| 11 | 230V 1500W RESISTANCE | M.ELK-RZS-BRU-KFR-007 |
| 12 | 930*650 GRILL | M.AKS-SPT-TEL-012 |
| 13 | SHELF SHEET METAL | YSC-KNX.PG7-LZ-0494 |
| 14 | NO:2 25 MM TERMINAL | M.ELK-KLM-RKL-4*4-SRY |
| 15 | TERMINAL | M.ELK-KLM-PRS-001 |
| 16 | CHIMNEY OUTER SHEET | YSC-KNX.PG9-PN-0559 |
| 17 | CHIMNEY INNER SHEET | YSC-KNX.PG9-PN-0560 |
| 18 | PG-16 CABLE FITTING | JP.M.ELK-RKR-PLS-001 |
| 19 | BACK SHEET METAL | YSC-KNX.PG9-LZ-0779 |
| 20 | CABLE PIPE | YBR-KNX.PG7-KS-0012 |
| 21 | CHASSIS | - |
| 22 | 15 CM LEG | M.AKS-AYK-INX-001 |
| 23 | SIDE WIRE SHEET | YSC-KNX.PG7-PN-0475 |
| 24 | HINGE | M.AKS-MNT-KZN-002 |
| 25 | HINGE | M.AKS-MNT-KZN-003 |
| 26 | JOINT RESISTANCE | M.AKS-MNT-KZN-004 |
| 27 | GASKET | HCN-SLK-PG-001 |
| 28 | COVER INTERNAL SHEET | YSC-KNX.PG7-LZ-1130 |
| 29 | COVER OUTER SHEET | YSC-KNX.PG7-LZ-1127 |
| 30 | UPPER ROVING SHEET | YSC-KNX.PG7-PN-0524 |
| 31 | COVER INSIDE UPPER SUPPORT SHEET | YSC-KNX.PG7-LZ-0724 |
| 32 | HANDLE | M.AKS-KLP-LUX-004 |

UNDER BENCH OVEN-ELECTRIC

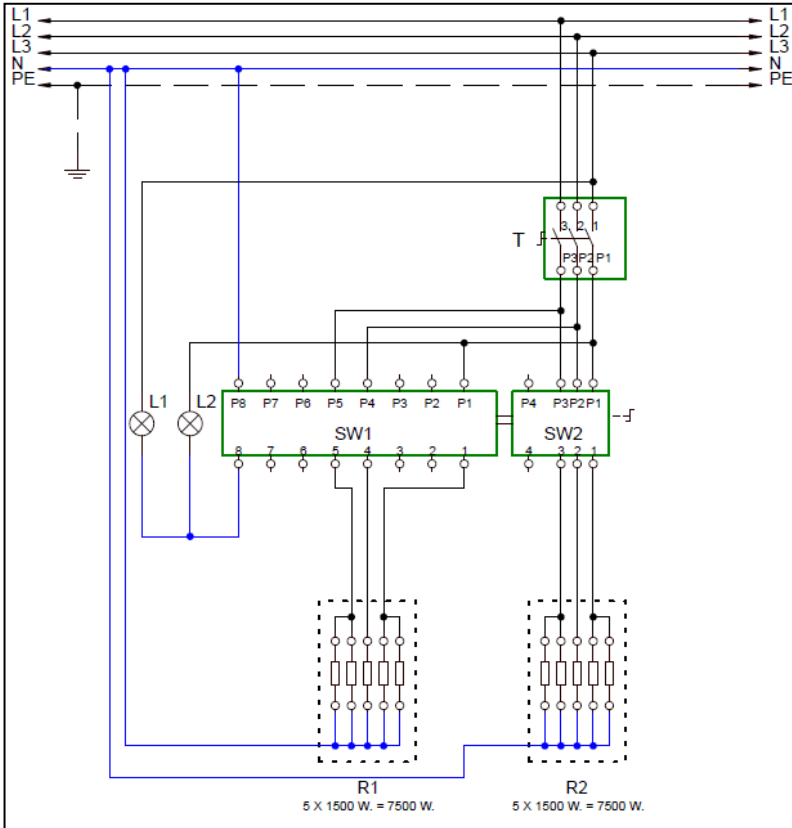
H ELECTRIC CIRCUIT SCHEMA



EMP.7FRE-9FRE01-02

| T | R1 | R2 | SW1 | SW2 | L5.L6 |
|--------------------------|---|--|--------------------------|--------------------------|---------------------|
| Thermostat (50-300°C) | Plate Resistance 3x1500 W 230 V. | Oven upper resistance 3x1500 W 230 V. | 0-3 gradual komutator | 0-1 Trifaze şalter | Oven signal lamp |

H ELECTRIC CIRCUIT SCHEMA



EMP.FRE-9FRE03

| T | R1 | R2 | SW1 | SW2 | L5.L6 |
|--------------------------|---|---|--------------------------|--------------------------|---------------------|
| Thermostat (50-300°C) | Plate Resistance 5x1500 W 230 V. | Oven upper resistance 5x1500 W 230 V. | 0-3 gradual komutator | 0-1 Trifaze şalter | Oven signal lamp |