



ELECTRIC INDUCTION COOKERS

CONTENTS

A	GENERAL INFORMATION	Page 2
A1	PRODUCT DESCRIPTION	Page 3
A2	TECHNICAL INFORMATION	Page 3
A3	TRANSPORTATION	Page 4
A4	UNPACKING	Page 4
B	INSTALLATION	Page 4
C	SAFETY INSTRUCTIONS	Page 5
D	OPERATION	Page 6
E	CLEANING & MAINTENANCE.....	Page 7
F	TROUBLESHOOTING	Page 8
G	SPARE PART LIST- EXPLODING DRAWING	Page 9
H	ELECTRIC CIRCUIT SCHEMA	Page 15

A GENERAL INFORMATION

Before installing the appliance, read operation and maintenance instructions carefully. Wrong installation and part changing may damage the product or may cause injury on people. These are not in our company's responsibility to damage the appliance intentionally, negligence, detriments because of disobeying instructions and regulations, wrong connections. Unauthorized intervention to appliance invalidates the warranty.

1. This instruction manual should be kept in a safe place for future reference.
2. **Installation should be made in accordance with ordinances and security rules of that country by a qualified service personnel.**
3. This appliance has to be used by trained person.
4. Please turn off the appliance immediately in the event of malfunction or failure. The appliance should be repaired only by authorized service personnel. Please demand original spare part.

ELECTRIC INDUCTION COOKERS

A1 PRODUCT DESCRIPTION

*The Professional Electric Ranges ,that provides high efficiency has been designed to be used in industrial kitchens.

Product Code	Dimensions (mm)	Weight (kg)	Packaging Dimensions (mm)
EMP.PLS.7IND010	400x730x300	28	480X800X620
EMP.PLS.7IND020	800x730x300	48	900X850X620
EMP.PLS.7IND030	1200x730x300	77	1230X850X620
EMP.PLS.9IND010	400x900x300	34	480X1000X620
EMP.PLS.9IND020	800x900x300	56	900X1000X620
EMP.PLS.9IND030	1200x900x300	90	1230X1000X6200

A2 TECHNICAL INFORMATION

Product Code	Model	Electric Inlet	Cable (mm ²)	Power (KW)
EMP.PLS.7IND010	2 electric induction cookers	230 V	3x4	6
EMP.PLS.7IND020	4 electric induction cookers	400 V	5x4	12
EMP.PLS.7IND030	6 electric induction cookers	400 V	5x6	18
EMP.PLS.9IND010	2 electric induction cookers	230 V	3x4	7
EMP.PLS.9IND020	4 electric induction cookers	400 V	5x4	14
EMP.PLS.9IND030	6 electric induction cookers	400 V	5x6	21

A3 TRANSPORTATION

*This appliance can not be moved by hand from area to area.It must be moved on pallet with forklift truck.

A4 UNPACKING

*Please unpack the package according to the security codes and ordinances of current country and get rid from the pack. Parts which contacts with food are produced by stainless steel. All plastic parts are marked by material's symbol.
















*Please check that all the parts of appliance had come completely and if they are damaged or not during the shipping.

B INSTALLATION

- Please place the product to straight and sturdy ground, please take necessary steps against possibility of overturn.
- Technician who will serve for installation and service for the appliance must be professional on this subject and must have installation and service licenses by the company.
- Connection to Electric Power Supply must be done by authorized person.
- Avoid installing the device near other equipment that generates excessive heat or steam. Do not operate in a hot environment above 50°C.
- If the location where Electric Grills placed is covered with nonflammable heat insulation material, the distance between them must be 5 cm. Otherwise it should be at least 20 cm. The appliance shouldn't be operated under chimney hood.
- Always provide a dedicated electrical circuit for the device. Do not use extension cords or multiple sockets.
- Please be sure that the voltage connected to appliance must be equal with the voltage which is on appliance's label.
- This appliance must be connected to an earthed outlet in accordance with safety rules and standards.
- Appliance's earthing must be connected to earthing line on panel which is nearest to electric installation.
- Connection to the main fuse and leak current fuse must be done in accordance with the current regulations.

ELECTRIC INDUCTION COOKERS

C SAFETY INSTRUCTIONS

-  • Do not use the appliance in insufficient lighted place.
-  • Do not touch the moving attachments while the appliance operates.
-  • Do not install the appliance in the presence of flammable or explosive materials.
-  • Do not operate the appliance when the machine is empty.
-  • Do not load so less or more than appliance's capacity.
-  • Ocağın yüzeyi çatlamışsa cihazın bağlantısını kesin veya kırılan kısmın bağlantısını ocaktan ayırın.
-  • Do not use outdoors.
-  • Kitchen utensils, cutlery, etc. on the hob. Do not put metal objects such as.
-  • Only use the recommended type and size of containers.
-  • Do not let cables hang around or touch hot surfaces.
-  • Do not clean the device with water.
-  • Do not interfere with the device without using suitable protective equipment.
-  • Use fire extinguishers by quickly turning off gas valves and electrical switches (if any) in case of fire or flames in the area where the device is used for any reason. Never use water to extinguish the flame.
-  • Damages caused by lack of ground connection will not be covered under warranty.
-  • Switch the appliance "off" after each use, then unplug it.

NOT: Do not use extension cords. If it must be used, use a single cable. It should not be minimum 1.5mm² and longer than 3 meters

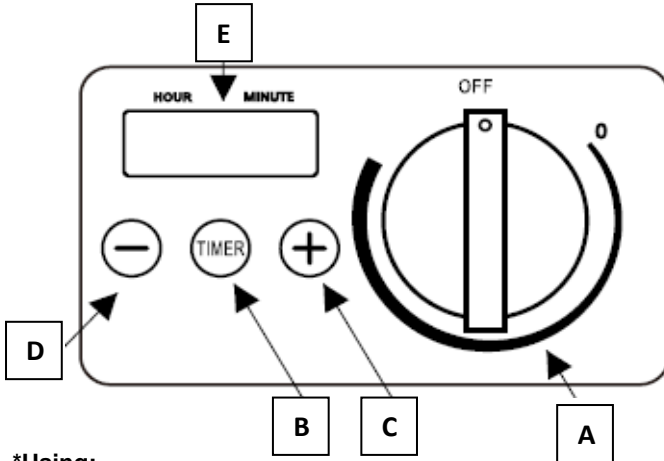
Containers Unsuitable for Cooking

Ceramic, Glass, Copper, Bronze, Aluminum based containers with a diameter smaller than 12 cm.

- Ceramic, Copper, Bronze, Glass and Aluminum Pans.
- Pots,
- Standing Pans,
- Flat trays,

D OPERATION

*Control Panel;



- A:** Power Regulator Rotary knob.
- B:** Timing Mode
- C:** "+" increase
- D:** "-" decrease
- E:** LED display screen

*Using:

- Turn the knob to the desired Cooking setting (1-10 power levels), the hob will turn on.
- Turn the control knob to the left to decrease the power of the hob, to the right to increase it.
- Set the desired cook setting by touching the timing function control.
- Use the "+", "-" keys to increase or decrease the settings.
- To turn off the cooker, turn the control knob to 0 until you hear a "click". You will see the LED display goes off.

Cooking in Timer Mode :

- Turn the control knob to the right to turn on the cooker.
- Put the ingredients you will cook on the stove.
- Press the timing mode button (0-24 hours)
- Press the "+" or "-" keys to adjust in 1 minute increments (0-60 minutes), long press the "+, -" keys to adjust in 5 minute increments.
- Press the schedule button again and use the "+" or "-" keys to set the hour in 1 hour increments (0-24).
- Press the timing button for the third time, the timer will turn off.
- Turn the control knob to the "OFF" position to turn off the hob.

ELECTRIC INDUCTION COOKERS

E CLEANING & MAINTENANCE

➤ **CLEANING AND MAINTENANCE AFTER EVERY USE**

- Always turn off the appliance and disconnect from the power supply before cleaning.
- Clean the outer surface of the appliance with a wet cloth and chrome shiner.
- Do not use abrasive cleaning chemicals as these can leave harmful residues.
- Do not clean the appliance by spraying water directly, otherwise electric motor may get damaged.

➤ **PERIODIC CLEANING AND MAINTENANCE**

- Maintenance should be done by qualified person.
- Get the periodic maintenance of the appliance once in every 15 days.
- Check the electrical connections of the heating glasses on the cooker periodically.
- Maintenance of the appliance's contactor should be done by compressed air according to frequency of use.

F TROUBLESHOOTING

THE APPLIANCE DOESN'T OPERATE	<ol style="list-style-type: none"> 1. Check if the appliance is plugged in. 2. Check the electrical connections and voltage.
THE APPLIANCE DOESN'T COOK WELL	<ol style="list-style-type: none"> 1. Check if it is operated at required heat or not.
THE APPLIANCE STOPPED	<ol style="list-style-type: none"> 1. The appliance can stop due to low voltage. In this situation check the voltage. 2. The device may stop when it overheats. Please observe the points in the general warnings section.

ERROR	ERROR CODE	ERROR ANALYSIS
CIRCUIT FAULT	E0	Check if components and circuit board are damaged.
EMPTY CAP PROTECTION	E1	Is it a pot suitable for induction ?
LOW VOLTAGE PROTECTION	E2	Check if the voltage is low.
HIGH VOLTAGE PROTECTION	E3	Check if the voltage is high.
TEMPERATURE SENSOR DOES NOT WORK	E4	Check if the temperature sensor cable is broken or unplugged.
OVERHEATING	E9	Internal fan of the circuit board is broken or the air inlet is blocked.
CANNOT CONNECT TO THE MOTHERBOARD CONTROL PANEL	EC	Check cable connection between motherboard and display control card.

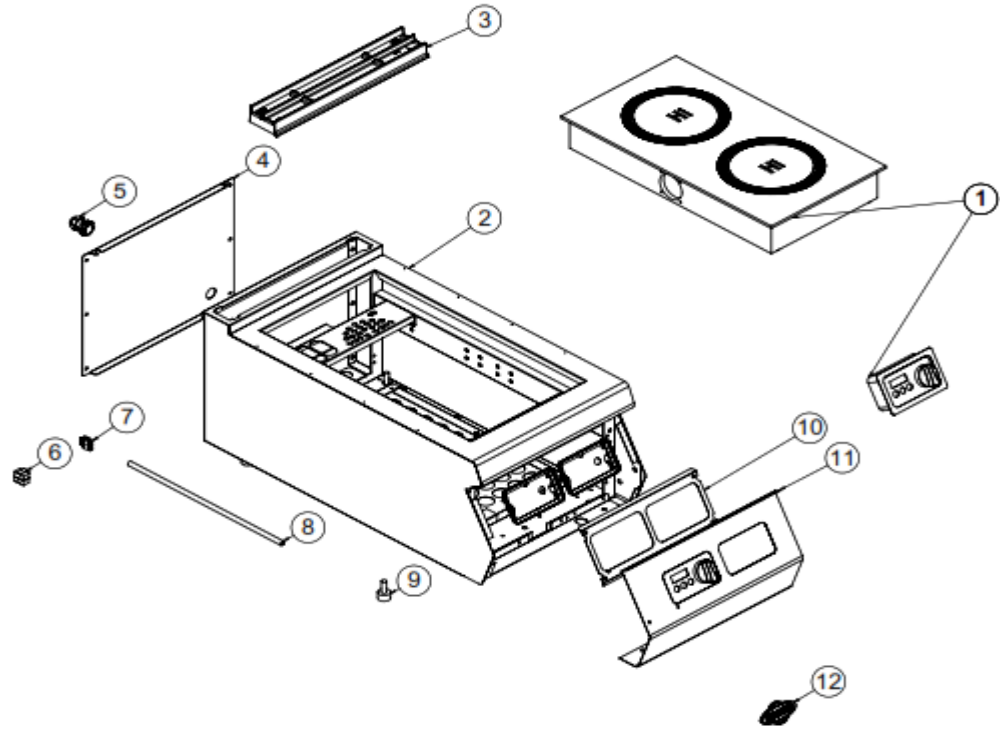
- If cooking at electric ranges is not done at suitable quality
- If any function of security doesn't work
 - Do not use the appliance.

***If these problems are still going on, contact with our authorized services.**

Warning : If the surface of the device is cracked, immediately disconnect the device or separate the broken part from the electrical connection.

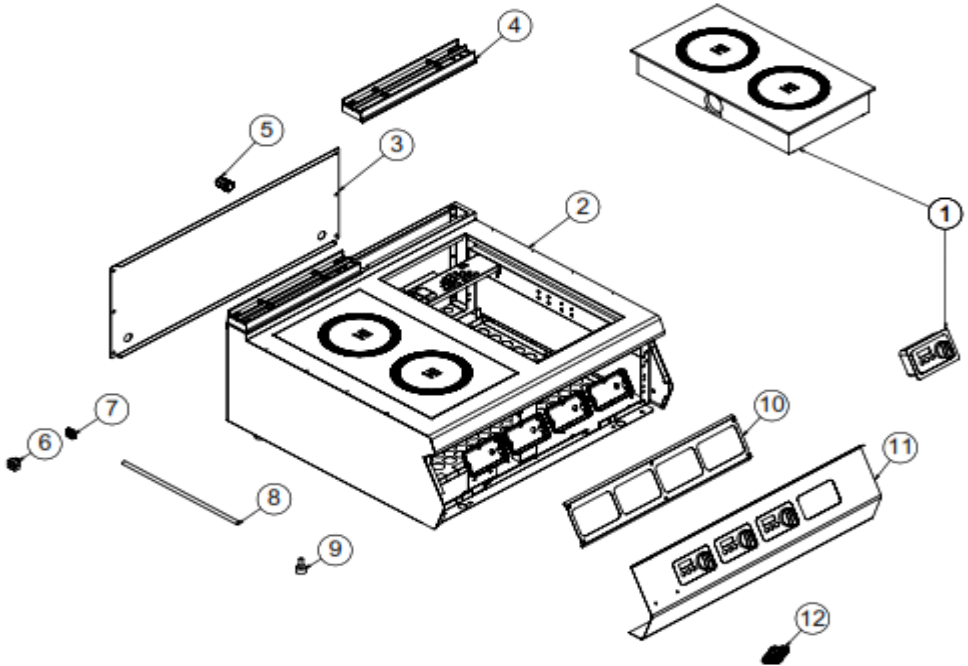
ELECTRIC INDUCTION COOKERS

G SPARE PART LIST-EXPLODING DRAWING



PRODUCT CODE: EMP.PLS.7IND010		
NO	PRODUCT NAME	P.CODE
1	550*300*80 BUILT-IN INDUCTION COOKER	JP.M.MUH-061
2	CHASSIS	-
3	40 CM X 7 CM CHIMNEY	JP.M.AKS-DKM-KZN-013
4	BACK COVER SHEET	JP.YSC-KNX.PG7-PN-0391
5	PG-16 CABLE FITTING	JP.M.ELK-RKR-PLS-001
6	TERMINAL	M.ELK-KLM-PRS-001
7	NO:2 25 MM TERMINAL	M.ELK-KLM-RKL-4*4-SRY
8	CABLE PIPE 450 MM	YBR-KNX.PG9-KS-0002
9	M10*35 FOOT	JP.M.AKS-AYK-PLS-002
10	SCREEN SUPPORT SHEET	YSC-KNX.PG7-LZ-1101
11	FRONT PANEL	YSC-KNX.PG7-LZ-1026
12	TICKET	M.AKS-OZL-MTL-006

G SPARE PART LIST-EXPLODING DRAWING

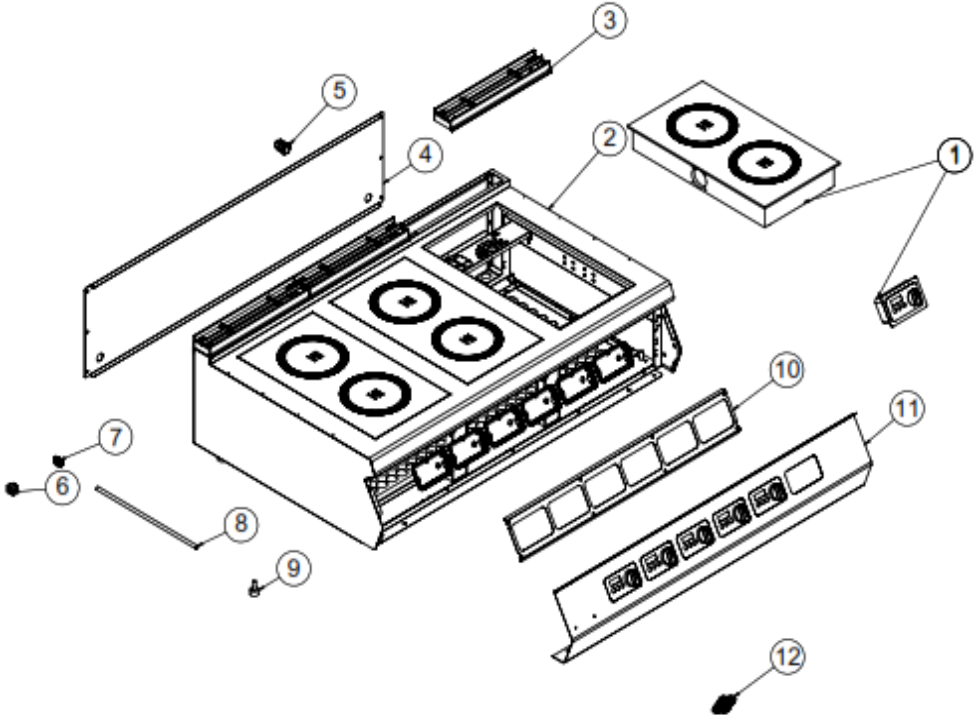


PRODUCT CODE: EMP.PLS.7IND020

NO	PRODUCT NAME	P.CODE
1	550*300*80 BUILT-IN INDUCTION COOKER	JP.M.MUH-061
2	CHASSIS	-
3	BACK SHEET METAL	YSC-KNX.PG7-PN-0398
4	40 CM X 7 CM CHIMNEY	JP.M.AKS-DKM-KZN-013
5	PG-16 CABLE FITTING	JP.M.ELK-RKR-PLS-001
6	TERMINAL	M.ELK-KLM-PRS-001
7	NO:2 25 MM TERMINAL	M.ELK-KLM-RKL-4*4-SRY
8	CABLE PIPE 450 MM	YBR-KNX.PG9-KS-0002
9	M10*35 FOOT	JP.M.AKS-AYK-PLS-002
10	SCREEN SUPPORT SHEET	YSC-KNX.PG7-LZ-1109
11	FRONT PANEL	YSC-KNX.PG7-LZ-1029
12	TICKET	M.AKS-OZL-MTL-006

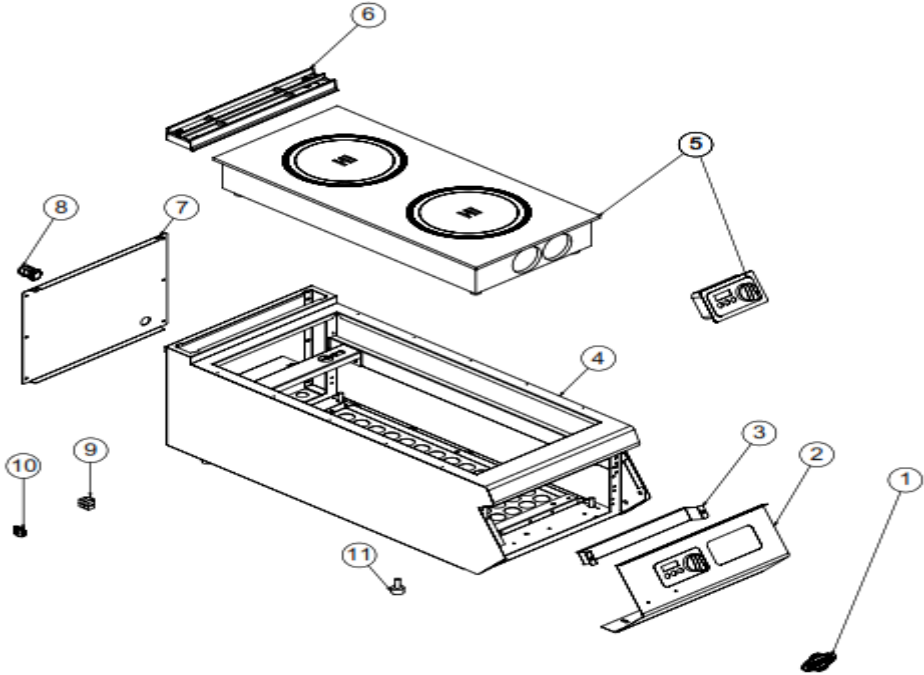
ELECTRIC INDUCTION COOKERS

G SPARE PART LIST-EXPLODING DRAWING



PRODUCT CODE: EMP.PLS.7IND030		
NO	PRODUCT NAME	P.CODE
1	550*300*80 BUILT-IN INDUCTION COOKER	JP.M.MUH-061
2	CHASSIS	-
3	40 CM X 7 CM CHIMNEY	JP.M.AKS-DKM-KZN-013
4	BACK SHEET METAL	YSC-KNX.PG7-LZ-0435
5	PG-16 CABLE FITTING	JP.M.ELK-RKR-PLS-001
6	TERMINAL	M.ELK-KLM-PRS-001
7	NO:2 25 MM TERMINAL	M.ELK-KLM-RKL-4*4-SRY
8	CABLE PIPE 450 MM	YBR-KNX.PG9-KS-0002
9	M10*35 FOOT	JP.M.AKS-AYK-PLS-002
10	SCREEN SUPPORT SHEET	YSC-KNX.PG7-LZ-1187
11	FRONT PANEL	YSC-KNX.PG7-LZ-1186
12	TICKET	M.AKS-OZL-MTL-006

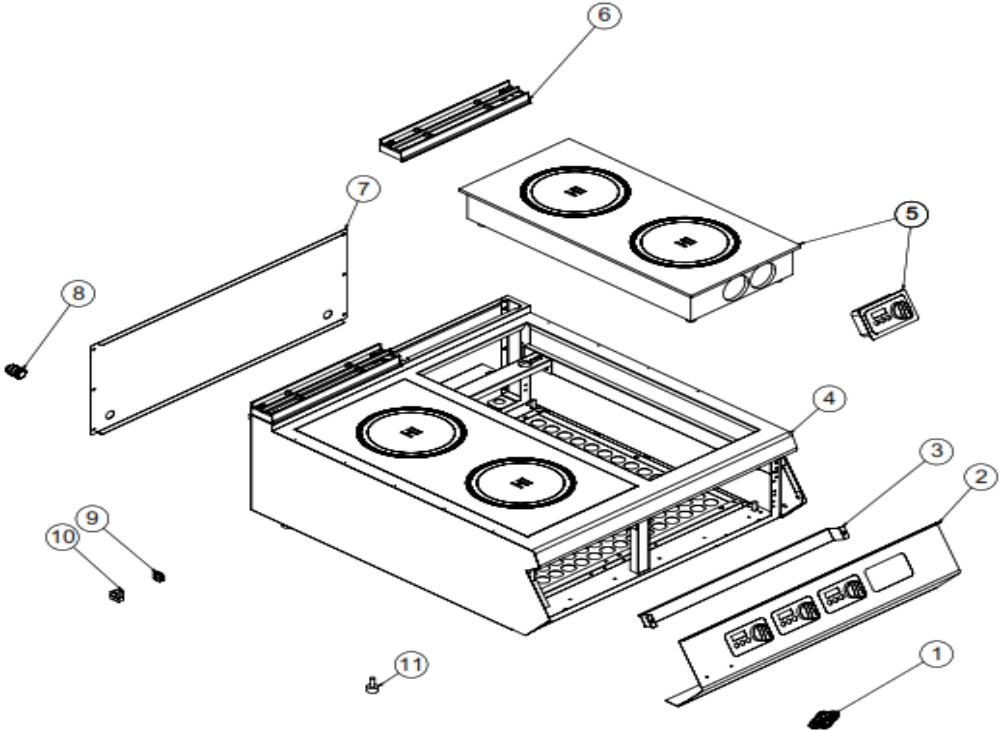
G SPARE PART LIST-EXPLODING DRAWING



PRODUCT CODE: EMP.PLS.9IND010		
NO	PRODUCT NAME	P.CODE
1	TICKET	M.AKS-OZL-MTL-006
2	FRONT PANEL	YSC-KNX.PG7-LZ-1032
3	SCREEN SUPPORT SHEET	YSC-KNX.PG7-LZ-1101
4	CHASSIS	-
5	360*380*100 BUILT-IN INDUCTION COOKER	JP.M.MUH-057
6	40 CM X 7 CM CHIMNEY	JP.M.AKS-DKM-KZN-013
7	BACK COVER SHEET	JP.YSC-KNX.PG7-PN-0391
8	PG-16 CABLE FITTING	JP.M.ELK-RKR-PLS-001
9	TERMINAL	M.ELK-KLM-PRS-001
10	NO:2 25 MM TERMINAL	M.ELK-KLM-RKL-4*4-SRY
11	M10*35 FOOT	JP.M.AKS-AYK-PLS-002

ELECTRIC INDUCTION COOKERS

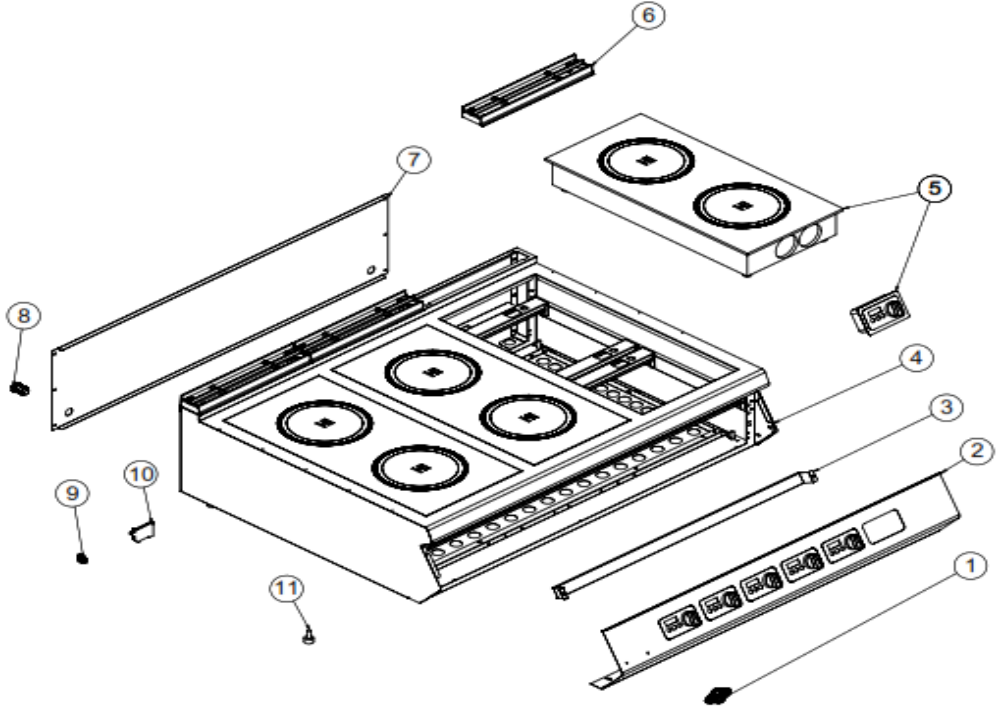
G SPARE PART LIST-EXPLODING DRAWING



PRODUCT CODE: EMP.PLS.9IND020

NO	PRODUCT NAME	P.CODE
1	TICKET	M.AKS-OZL-MTL-006
2	FRONT PANEL LEATHER	YSC-KNX.PG9-LZ-1056
3	SCREEN SUPPORT SHEET	YSC-KNX.PG7-LZ-1109
4	CHASSIS	-
5	360*380*100 BUILT-IN INDUCTION COOKER	JP.M.MUH-057
6	40 CM X 7 CM CHIMNEY	JP.M.AKS-DKM-KZN-013
7	BACK SHEET METAL	YSC-KNX.PG7-PN-0398
8	PG-16 CABLE FITTING	JP.M.ELK-RKR-PLS-001
9	NO:2 25 MM TERMINAL	M.ELK-KLM-RKL-4*4-SRY
10	TERMINAL	M.ELK-KLM-PRS-001
11	M10*35 FOOT	JP.M.AKS-AYK-PLS-002

G SPARE PART LIST-EXPLODING DRAWING

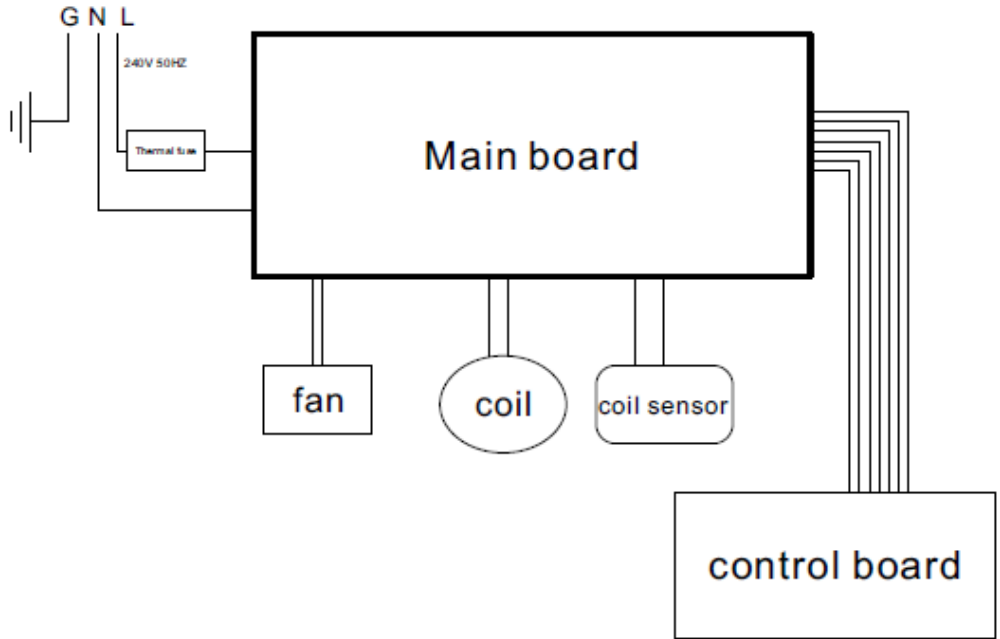


PRODUCT CODE: EMP.PLS.9IND030

NO	PRODUCT NAME	P.CODE
1	TICKET	M.AKS-OZL-MTL-006
2	FRONT PANEL	YSC-KNX.PG9-LZ-1201
3	SCREEN SUPPORT SHEET	YSC-KNX.PG7-LZ-1187
4	CHASSIS	-
5	360*380*100 BUILT-IN INDUCTION COOKER	JP.M.MUH-057
6	40 CM X 7 CM CHIMNEY	JP.M.AKS-DKM-KZN-013
7	BACK SHEET METAL	YSC-KNX.PG7-LZ-0435
8	PG-21 CABLE FITTING	JP.M.ELK-RKR-PLS-008
9	NO:2 25 MM TERMINAL	M.ELK-KLM-RKL-4*4-SRY
10	AVK 16 TERMINAL	JP.M.ELK-KLM-058
11	M10*35 FOOT	JP.M.AKS-AYK-PLS-002

ELECTRIC INDUCTION COOKERS

H ELECTRIC CIRCUIT SCHEMA



EMP.PLS.7IND010- EMP.PLS.7IND020- EMP.PLS.7IND030

EMP.PLS.9IND010- EMP.PLS.9IND020- EMP.PLS.9IND030