



# TILTING PAN (ELECTRICAL)

## CONTENTS

---

<b>A</b>	<b>GENERAL INFORMATION.....</b>	<b>Page 2</b>
A1	PRODUCT DESCRIPTION .....	Page 3
A2	TECHNICAL INFORMATION .....	Page 3
A3	TRANSPORTATION .....	Page 4
A4	UNPACKING .....	Page 4
<b>B</b>	<b>INSTALLATION .....</b>	<b>Page 4</b>
<b>C</b>	<b>SAFETY INSTRUCTIONS .....</b>	<b>Page 5</b>
<b>D</b>	<b>OPERATION .....</b>	<b>Page 6</b>
<b>E</b>	<b>CLEANING &amp; MAINTENANCE.....</b>	<b>Page 7</b>
<b>F</b>	<b>TROUBLESHOOTING.....</b>	<b>Page 8</b>
<b>G</b>	<b>SPARE PART LIST- EXPLODING DRAWING .....</b>	<b>Page 9</b>
<b>H</b>	<b>ELECTRIC CIRCUIT SCHEMA .....</b>	<b>Page 15</b>

## A GENERAL INFORMATION

---

**Before installing the appliance, read operation and maintenance instructions carefully. Wrong installation and part changing may damage the product or may cause injury on people. These are not in our company's responsibility to damage the appliance intentionally, negligence, detriments because of disobeying instructions and regulations, wrong connections. Unauthorized intervention to appliance invalidates the warranty.**

1. This instruction manual should be kept in a safe place for future reference.
2. **Installation should be made in accordance with ordinances and security rules of that country by a qualified service personnel.**
3. This appliance has to be used by trained person.
4. Please turn off the appliance immediately in the event of malfunction or failure. The appliance should be repaired only by authorized service personnel. Please demand original spare part.



# TILTING PAN (ELECTRICAL)

## A1 PRODUCT DESCRIPTION

\*The Professional Tilting Pan (Electrical) ,that provides high efficiency has been designed to be used in industrial kitchens.

Product Code	Dimensions (mm)	Weight (kg)	Packaging Dimensions (mm)
EMP.PLS.DTE.50	800x730x850	120	920x830x1160
EMP.PLS.DTE.80	1200x900x850	148	840x1040x1160
EMP.PLS.DTE.120	1200x900x850	190	1280x1140x1120

## A2 TECHNICAL INFORMATION

Product Code	Capacity (lt)	Electric Inlet (V)	Cable (mm <sup>2</sup> )	Power (KW)
EMP.PLS.DTE.50	50	400 AC 3N PE	5x2,5	9
EMP.PLS.DTE.80	80	400 AC 3N PE	5x2,5	12
EMP.PLS.DTE.120	120	400 AC 3N PE	5x2,5	12

**A3 TRANSPORTATION**

---

\*This appliance can not be moved by hand from area to area. It must be moved on pallet with forklift truck.

**A4 UNPACKING**

---

\*Please unpack the package according to the security codes and ordinances of current country and get rid from the pack. Parts which contacts with food are produced by stainless steel. All plastic parts are marked by material's symbol.

\*Please check that all the parts of appliance had come completely and if they are damaged or not during the shipping.

**B INSTALLATION**

---

\*Please place the product to straight and sturdy ground, please take necessary steps against possibility of overturn.

\*Technician who will serve for installation and service for the appliance must be professional on this subject and must have installation and service licenses by the company.

\*Connection to Electric Power Supply must be done by authorized person.

\*Please be sure that the voltage connected to appliance must be equal with the voltage which is on appliance's label.



This appliance must be connected to an earthed outlet in accordance with safety rules and standards.

\*Appliance's earthing must be connected to earthing line on panel which is nearest to electric installation.










\*Connection to the main fuse and leak current fuse must be done in accordance with the current regulations.

\* If the location where electric tilting pan (electrical) placed is covered with nonflammable heat insulation material, the distance between them must be 5 cm. Otherwise it should be at least 20 cm. The appliance shouldn't be operated under chimney hood.

# TILTING PAN (ELECTRICAL)

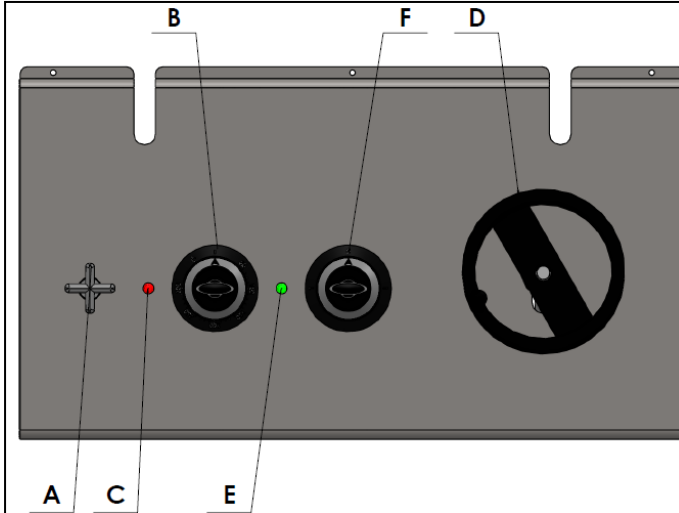
## C SAFETY INSTRUCTIONS

---

-  \*Do not use the appliance in insufficient lighted place.
  
-  \*Do not touch the moving attachments while the appliance operates.
  
-  \*Do not install the appliance in the presence of flammable or explosive materials.
  
-  \*Do not operate the appliance when the machine is empty.
  
-  \*Do not load so less or more than appliance's capacity.
  
-  \*Do not attempt to use the appliance without suitable protective equipments.
  
-  \*Because of any reason if there is a fire or flame flare where the appliance is used, turn off all gas valves and electric contactor switch quickly and use fire extinguisher. Never use water to extinguish the fire.
  
-  \*All the damages because of not having earthing connection will not be on warranty.
  
-  \*Do not increase the appliance's temperature more than required.

## D OPERATION

### \*Control Panel;



- A : Water inlet valve
- B : Thermostat
- C : Signal lamp
- D : Lifting part
- E : Warn lamp
- F : Switch

### \*Operating;

- In order to operate the appliance, plug in.
- Start electric flow by turning switches. 6 resistances each of them has 2000 Watt will start to be heated.
- Adjust the temperature with thermostat heat setting.
- Provide the cooking pan to be placed smoothly.
- Get ready the materials that are desired to be cooked before the operation.
- Start to cook materials by putting them on the cooking pan.
- Turn on the water inlet valve when you want to add water. Close the lid and start to cook.
- Provide the pan to be at side position and evacuate the cooked foods.
- When the operation is completed switch off thermostat setting and unplug the appliance.

## TILTING PAN (ELECTRICAL)

### **E      CLEANING & MAINTENANCE**

---

#### ➤ **CLEANING AND MAINTENANCE AFTER EVERY USE**

- Always turn off the appliance and disconnect from the power supply before cleaning.
- Clean the outer surface of the appliance, cooking pan and lid with a moist cloth.
- Do not use abrasive cleaning chemicals as these can leave harmful residues
- Do not clean the appliance by spraying water directly, otherwise electric motor may get damaged.

#### ➤ **PERIODIC CLEANING AND MAINTENANCE**

- Maintenance should be done by qualified person.
- Get the periodic maintenance of the appliance once in every 15 days.
- Maintenance of the appliance's contactor should be done by compressed air according to frequency of use.



## TILTING PAN (ELECTRICAL)

### F TROUBLESHOOTING

<b>THE APPLIANCE DOESN'T OPERATE</b>	<ol style="list-style-type: none"><li>1. Check if the appliance is plugged in.</li><li>2. Check the electrical connections and voltage.</li><li>3. Check that if the fuse is on or off.</li></ol>
--------------------------------------	---

<b>THE APPLIANCE DOESN'T COOK WELL</b>	<ol style="list-style-type: none"><li>1. Check if it is operated at required heat or not.</li><li>2. Do not overload the cooking pan.</li></ol>
--	---

<b>THE APPLIANCE STOPPED</b>	<ol style="list-style-type: none"><li>1. The appliance can stop due to low voltage. In this situation check the voltage.</li><li>2. The appliance's thermostat control stops the heat automatically. When the temperature reduces, the heaters step in again.</li><li>3. When the cooking pan is lifted, safety switch steps in and the heaters are off automatically. When the pan is placed smoothly, the appliance starts to operate again.</li></ol>
------------------------------	--

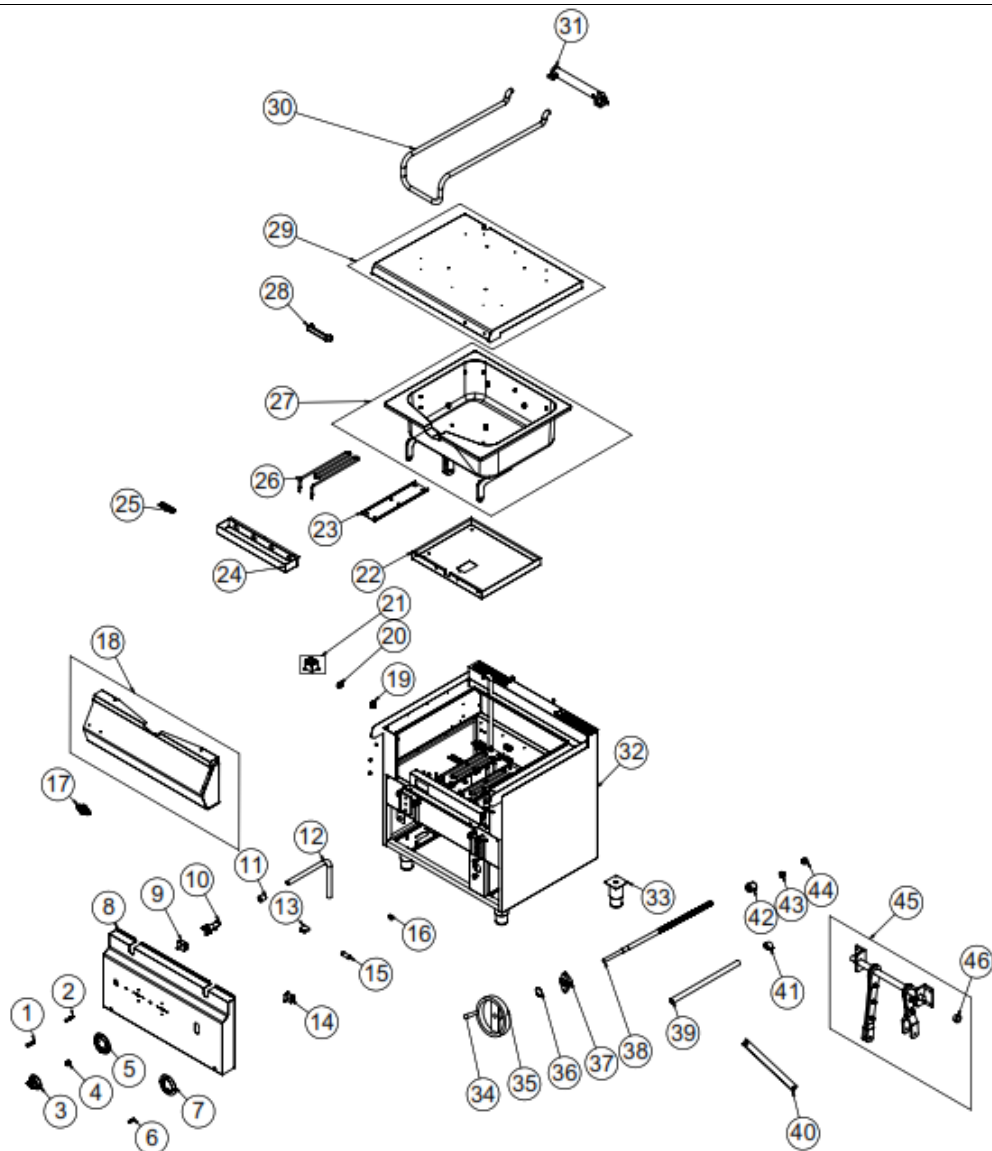
- If cooking at tilting pan (electrical) is not done at suitable quality
- If any function of security doesn't work
  - Do not use the appliance.

**\*If these problems are still going on, contact with our authorized services.**



# TILTING PAN (ELECTRICAL)

## G SPARE PART LIST-EXPLODING DRAWING



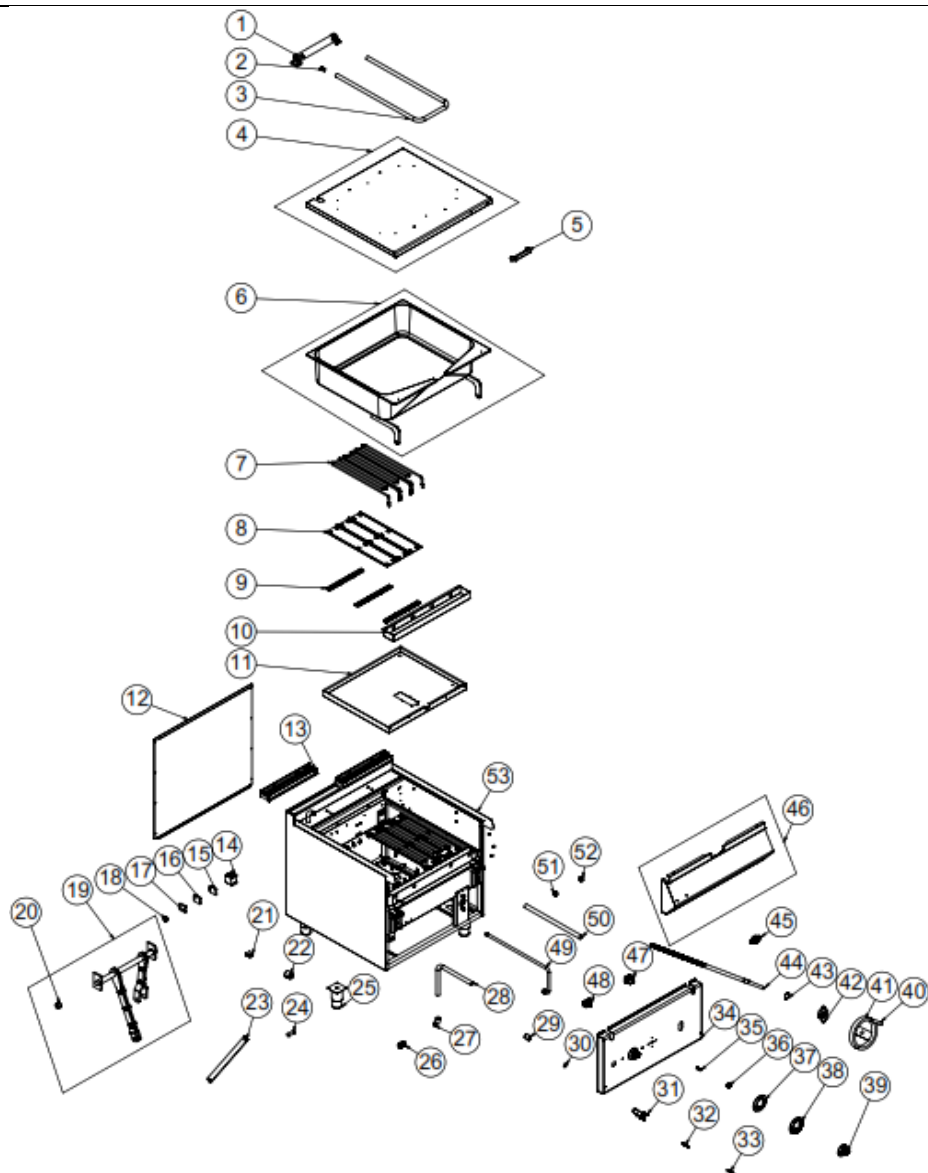
EMP.PLS.DTE.50

## G SPARE PART LIST-EXPLODING DRAWING

PRODUCT CODE: EMP.PLS.DTE.50		
NO	PRODUCT NAME	P.CODE
1	WARNING LAMP	M.ELK-LMB-SNY-001
2	SIGNAL LAMP	M.ELK-LMB-SNY-002
3	BUTTON	M.AKS-DGM-EMP-024
4	BUTTON SOCKET 6 MM	M.AKS-DGM-SKT-002
5	50-300 °C BUTTON BUFFER	M.AKS-DGM-EMP-017
6	M4 FRAME SPRING	M.YAY-PG-004
7	BUTTON BUFFER	M.AKS-DGM-EMP-018
8	FRONT COVER SHEET	YSC-KNX.PG7-LZ-0484
9	SWITCH 0-1	M.ELK-SLT-EGO-001
10	FAUCET	M.MEK-TES-MSL-003
11	MASON 1/2	M.MEK-TES-INX-002
12	INSTALLATION PIPE 500 MM	YBR-KNX.DTG-KS-0003
13	SWITCH BS1010	M.ELK-SWC-EMAS-002
14	16A 400V THERMOSTAT	M.ELK-MEK-TRM1-005
15	CONNECTION PIN 50 MM	YTL-KNX.DTG-KS-0002
16	GASKET	M.CNT-PLS-KLN-002
17	TICKET	M.AKS-OZL-MTL-006
18	FRONT PANEL	ARA-KNX.PG7-0012
19	PG-16 CABLE FITTING	JP.M.ELK-RKR-PLS-001
20	NO:2 25 MM TERMINAL	M.ELK-KLM-RKL-4*4-SRY
21	CABLE BACKET	M.ELK-DMT-PG9-018
22	INSULATION SHEET	YSC-KNX.DTG-PN-0052
23	RESISTANCE SHEET METAL	YSC-KNX.DTG-LZ-0041
24	RESISTANCE SHEET METAL	YSC-KNX.DTG-PN-0053
25	RESISTANCE SHEET METAL	YSC-KNX.DTG-LZ-0030
26	113395 RESISTANCE 2250W-230V	M.ELK-RZS-BRU-DTG-004
27	PAN	ARA-KNX.PG7-0015
28	NO:2 BAKALIT HANDLE	M.AKS-KLP-BKL-003
29	TOP COVER	ARA-KNX.PG7-0014
30	PIPE 1500MM	YBR-KNX.DTG-KS-0002
31	MECHANISM KIT	M.MUH-013
32	CHASSIS	-
33	15 CM LEG	M.AKS-AYK-INX-001
34	TILTING ARM	M.AKS-KLP-END-004
35	TILTING ARM	M.AKS-KLP-DTG-001
36	471/15 RING	M.AKS-SKM-001
37	BEARING UCFL 204 RHB	M.RLM-YRL-001
38	MOVEMENT ARM Ø20	YTL-KNX.DTG-KS-0007
39	1/2-1/2 100 CM GAS FLEX	M.GAZ-TES-SPR-005
40	CONEXION SHEET	YSC-KNX.DTG-LZ-0107
41	BRACKET	JP.M.GAZ-TES-GLV-002
42	MOVEMENT SHAFT NUT	YTL-KNX.DTG-KS-0003
43	REDUCTION BRASS 3/4-1/2	M.GAZ-PLT-PLC-006
44	REDUCTION 3/8 - 1/2	M.GAZ-TES-SRI-013
45	MECHANISM	ARA-KNX.PG7-0013
46	BUSH	YTL-KNX.DTG-KS-0006

# TILTING PAN (ELECTRICAL)

## G SPARE PART LIST-EXPLODING DRAWING



EMP.PLS.DTE.80

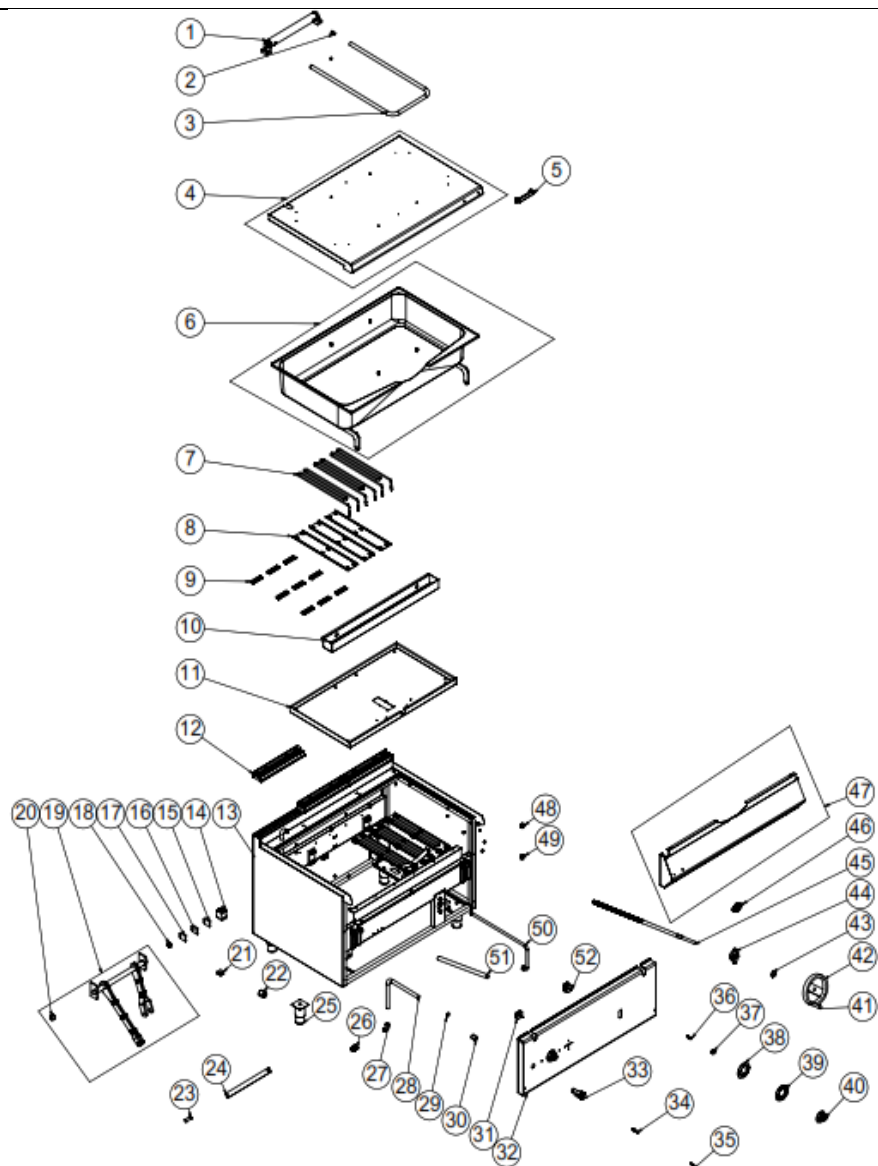
# TILTING PAN (ELECTRICAL)

## G SPARE PART LIST-EXPLODING DRAWING

PRODUCT CODE: EMP.PLS.DTE.80		
NO	PRODUCT NAME	P.CODE
1	MECHANISM KIT	M.MUH-013
2	COVER HANDLE	YTL-KNX.KTG-KS-0003
3	PIPE 1700MM	YBR-KNX.DTG-KS-0007
4	TOP COVER	ARA-KNX.PG9-0038
5	NO:2 BAKALIT HANDLE	M.AKS-KLP-BKL-003
6	POOL	ARA-KNX.PG9-0037
7	114771 230V 2000W RESISTANCE	M.ELK-RZS-BRU-DTG-001
8	RESISTANCE SHEET METAL	YSC-KNX.DTG-LZ-0029
9	RESISTANCE SHEET METAL	YSC-KNX.DTG-LZ-0030
10	CASING SHEETMETAL	YSC-KNX.DTG-PN-0038
11	INSULATION SHEET	YSC-KNX.DTG-PN-0036
12	BACK SHEET METAL	YSC-KNX.PG7-PN-0442
13	40 CM X 7 CM CHIMNEY	JP.M.AKS-DKM-KZN-013
14	LC1D18M7 CONTACTOR	JP.M.ELK-KNT-KNT-023
15	AVK 10 TERMINAL	JP.M.ELK-KLM-037
16	AVK 10 TERMINAL	JP.M.ELK-KLM-038
17	TERMINAL	JP.M.ELK-KLM-039
18	NO:2 25 MM TERMINAL	M.ELK-KLM-RKL-4*4-SRY
19	MECHANISM	ARA-KNX.PG9-0039
20	BUSH	YTL-KNX.DTG-KS-0006
21	SWITCH BS1010	M.ELK-SWC-FMAS-002
22	MOVEMENT SHAFT NUT	YTL-KNX.DTG-KS-0003
23	CONEXION SHEET	YSC-KNX.DTG-LZ-0107
24	CONNECTION PIN 50 MM	YTL-KNX.DTG-KS-0002
25	15 CM LEG	M.AKS-AYK-INX-001
26	PG-16 CABLE FITTING	JP.M.ELK-RKR-PLS-001
27	BRACKET	JP.M.GAZ-TES-GLV-002
28	INSTALLATION PIPE 500 MM	YBR-KNX.DTG-KS-0003
29	MASON 1/2	M.MEK-TES-INX-002
30	GASKET	M.CNT-PLS-KLN-002
31	FAUCET	M.MEK-TES-MSL-003
32	WARNING LAMP	M.ELK-LMB-SNY-001
33	SIGNAL LAMP	M.ELK-LMB-SNY-002
34	FRONT COVER SHEET	YSC-KNX.PG9-LZ-0499
35	M4 FRAME SPRING	M.YAY-PG-004
36	BUTTON SOCKET 6 MM	M.AKS-DGM-SKT-002
37	BUTTON BUFFER	M.AKS-DGM-EMP-018
38	50-300 °C BUTTON BUFFER	M.AKS-DGM-EMP-017
39	BUTTON	M.AKS-DGM-EMP-024
40	TILTING ARM	M.AKS-KLP-END-004
41	TILTING ARM	M.AKS-KLP-DTG-001
42	BEARING UCFL 204 RHB	M.RLM-YRL-001
43	471/15 RING	M.AKS-SKM-001
44	MOVEMENT ARM	YTL-KNX.DTG-KS-0004
45	TICKET	M.AKS-OZL-MTL-006
46	FRONT PANEL	ARA-KNX.PG9-0043
47	16A 400V THERMOSTAT	M.ELK-MEK-TRM1-005
48	SWITCH 0-1	M.ELK-SLT-EGO-001
49	1.5 METER HOSE	M.MEK-TES-HRT-006
50	1/2-1/2 100 CM GAS FLEX	M.GAZ-TES-SPR-005
51	REDUCTION BRASS 3/4-1/2	M.GAZ-PLT-PLC-006
52	REDUCTION 3/8 - 1/2	M.GAZ-TES-SRI-013
53	CHASSIS	-

# TILTING PAN (ELECTRICAL)

## G SPARE PART LIST-EXPLODING DRAWING



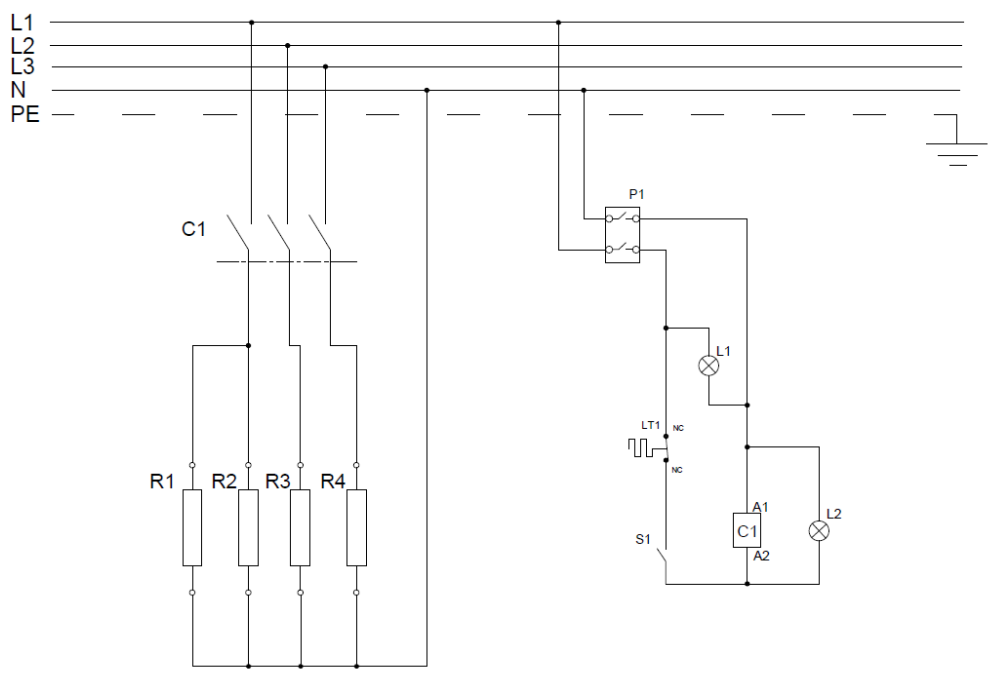
EMP.PLS.DTE.120

## G SPARE PART LIST-EXPLODING DRAWING

PRODUCT CODE: EMP.PLS.DTE.120		
NO	PRODUCT NAME	P.CODE
1	MECHANISM KIT	M.MUH-013
2	COVER HANDLE	YTL-KNX.KTG-KS-0003
3	PIPE 1700MM	YBR-KNX.DTG-KS-0007
4	TOP COVER	ARA-KNX.PG9-0042
5	NO:2 BAKALIT HANDLE	M.AKS-KLP-BKL-003
6	POOL	ARA-KNX.PG9-0041
7	114771 230V 2000W RESISTANCE	M.ELK-RZS-BRU-DTG-001
8	RESISTANCE SHEET METAL	YSC-KNX.DTG-LZ-0029
9	RESISTANCE SHEET METAL	YSC-KNX.DTG-LZ-0030
10	RESISTANCE COVER SHEET	YSC-KNX.PG9-PN-0452
11	RESISTANCE INSULATION SHEET	YSC-KNX.PG9-PN-0451
12	40 CM X 7 CM CHIMNEY	JP.M.AKS-DKM-KZN-013
13	CHASSIS	-
14	1C1D18M7 CONTACTOR	JP.M.ELK-KNT-KNT-023
15	AVK 10 TERMINAL	JP.M.ELK-KLM-037
16	AVK 10 TERMINAL	JP.M.ELK-KLM-038
17	TERMINAL	JP.M.ELK-KLM-039
18	NO:2 25 MM TERMINAL	M.ELK-KLM-RK1-4*4-SRY
19	MECHANISM	ARA-KNX.PG9-0039
20	BUSH	YTL-KNX.DTG-KS-0006
21	SWITCH BS1010	M.ELK-SWC-EMAS-002
22	MOVEMENT SHAFT NUT	YTL-KNX.DTG-KS-0003
23	CONNECTION PIN 50 MM	YTL-KNX.DTG-KS-0002
24	CONEXION SHEET	YSC-KNX.DTG-LZ-0107
25	15 CM LEG	M.AKS-AYK-INX-001
26	PG-16 CABLE FITTING	JP.M.ELK-RKR-PLS-001
27	BRACKET	JP.M.GAZ-TES-GLV-002
28	INSTALLATION PIPE 500 MM	YBR-KNX.DTG-KS-0003
29	GASKET	M.CNT-PLS-KLN-002
30	MASON 1/2	M.MEK-TES-INX-002
31	SWITCH 0-1	M.ELK-SLT-FGO-001
32	FRONT COVER SHEET	YSC-KNX.PG9-LZ-0514
33	FAUCET	M.MEK-TES-MSL-003
34	WARNING LAMP	M.ELK-LMB-SNY-001
35	SIGNAL LAMP	M.ELK-LMB-SNY-002
36	M4 FRAME SPRING	M.YAY-PG-004
37	BUTTON SOCKET 6 MM	M.AKS-DGM-SKT-002
38	50-300 °C BUTTON BUFFER	M.AKS-DGM-EMP-017
39	BUTTON BUFFER	M.AKS-DGM-EMP-018
40	BUTTON	M.AKS-DGM-EMP-024
41	TILTING ARM	M.AKS-KLP-END-004
42	TILTING ARM	M.AKS-KLP-DTG-001
43	471/15 RING	M.AKS-SKM-001
44	BEARING UCFL 204 RHB	M.RLM-YRI-001
45	MOVEMENT ARM	YTL-KNX.DTG-KS-0004
46	TICKET	M.AKS-QZL-MTL-006
47	FRONT PANEL	ARA-KNX.PG9-0044
48	REDUCTION BRASS 3/4-1/2	M.GAZ-PLT-PLC-006
49	REDUCTION 3/8 - 1/2	M.GAZ-TES-SRI-013
50	1.5 METER HOSE	M.MEK-TES-HRT-006
51	1/2-1/2 100 CM GAS FLEX	M.GAZ-TES-SPR-005
52	16A 400V THERMOSTAT	M.ELK-MEK-TRM1-005

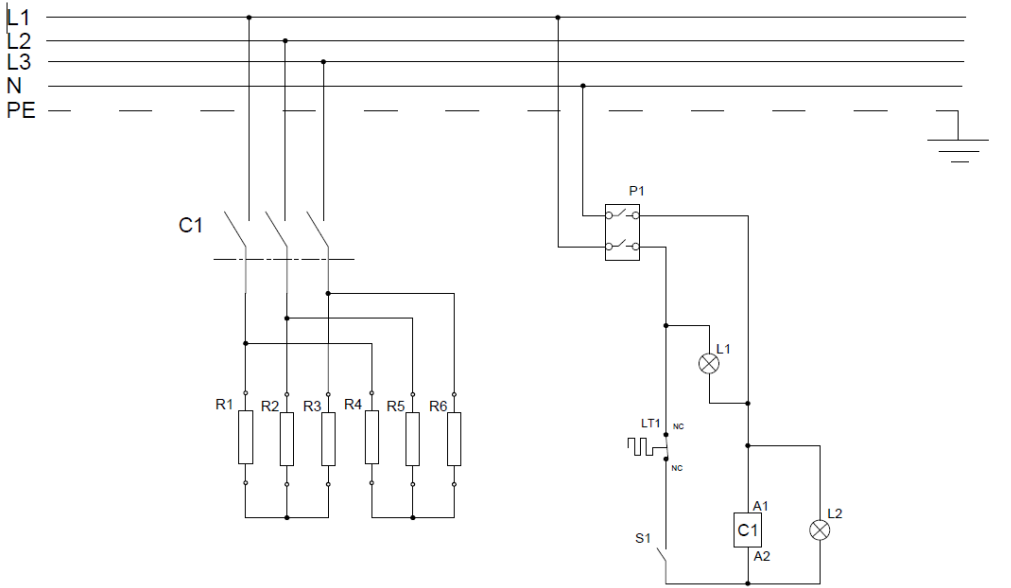
# TILTING PAN (ELECTRICAL)

## H ELECTRIC CIRCUIT SCHEMA



EMP.PLS.DTE.50

## H ELECTRIC CIRCUIT SCHEMA



EMP.PLS.DTE.80-DTE.120