



# REFRIGERATED CABINETS

## CONTENTS

---

<b>A</b>	<b>GENERAL INFORMATION.....</b>	<b>Page 2</b>
A1	PRODUCT DESCRIPTION .....	Page 3
A2	TECHNICAL INFORMATION .....	Page 3
A3	TRANSPORTATION .....	Page 4
A4	UNPACKING .....	Page 4
<b>B</b>	<b>INSTALLATION .....</b>	<b>Page 4</b>
<b>C</b>	<b>SAFETY INSTRUCTIONS.....</b>	<b>Page 5</b>
<b>D</b>	<b>OPERATION .....</b>	<b>Page 6</b>
<b>E</b>	<b>CLEANING &amp; MAINTENANCE.....</b>	<b>Page 7</b>
<b>F</b>	<b>TROUBLESHOOTING .....</b>	<b>Page 8</b>
<b>G</b>	<b>SPARE PART LIST- EXPLODING DRAWING .....</b>	<b>Page 9</b>
<b>H</b>	<b>ELECTRIC CIRCUIT SCHEMA.....</b>	<b>Page 15</b>

## A GENERAL INFORMATION

---

Before installing the appliance, read operation and maintenance instructions carefully. Wrong installation and part changing may damage the product or may cause injury on people. These are not in our company's responsibility to damage the appliance intentionally, negligence, detriments because of disobeying instructions and regulations, wrong connections. Unauthorized intervention to appliance invalidates the warranty.

1. This instruction manual should be kept in a safe place for future reference.
2. **Installation should be made in accordance with ordinances and security rules of that country by a qualified service personnel.**
3. This appliance has to be used by trained person.
4. Please turn off the appliance immediately in the event of malfunction or failure. The appliance should be repaired only by authorized service personnel. Please demand original spare part.

# REFRIGERATED CABINETS

## A1 PRODUCT DESCRIPTION

\*The Professional Refrigerated Cabinets ,that provides high efficiency has been designed to be used in industrial kitchen.

Product Code	Dimensions (mm)	Weight (kg)	Packaging Dimensions (mm)
<b>EMP.70.80.01</b>	700x800x2050	135	750x900x2170
<b>EMP.140.80.01</b>	1400x800x2050	220	1460x940x2170

## A2 TECHNICAL INFORMATION

Product Code	EMP.70.80.01	EMP.140.80.01
Capacity (Lt)	700	1400
Gas type	R290	R290
Gas weight (gr)	130	130
Power (KW)	0,14	0,26
Operating Voltage (V)	220-230	220-230
Cable (mm <sup>2</sup> )	3x1,5	3x1,5
Fuse (A)	25	25
Operat. Range (°C)	0 / +5	0 / +5
Density (kg/m <sup>3</sup> )	40	40

PRODUCT CODE	MODEL
<b>EMP.70.80.01</b>	*Single Door –Glass 2/1 GN interior shelf 3 pieces
<b>EMP.140.80.01</b>	*Double Door-Glass 2/1 GN interior shelf 6 pieces

**A3 TRANSPORTATION**

---

\*This appliance can not be moved by hand from area to area. It must be moved on pallet with forklift truck.

**A4 UNPACKING**

---

\*Please unpack the package according to the security codes and ordinances of current country and get rid from the pack. Parts which contacts with food are produced by stainless steel. All plastic parts are marked by material's symbol.

\*Please check that all the parts of appliance had come completely and if they are damaged or not during the shipping.

**B INSTALLATION**

---

\*Please place the product to straight and sturdy ground, please take necessary steps against possibility of overturn.

\*Technician who will serve for installation and service for the appliance must be professional on this subject and must have installation and service licenses by the company.

\*Connection to Electric Power Supply must be done by authorized person.

\*Please be sure that the voltage connected to appliance must be equal with the voltage which is on appliance's label.



This appliance must be connected to an earthed outlet in accordance with safety rules and standard.

\*Appliance's earthing must be connected to earthing line on panel which is nearest to electric installation.











\*Connection to the main fuse and leak current fuse must be done in accordance with the current regulations.

\*If the 2 appliance will be placed adjacently, there must be at least 2 cm space between them. The Condensation is prevented .

## REFRIGERATED CABINETS

### C SAFETY INSTRUCTIONS

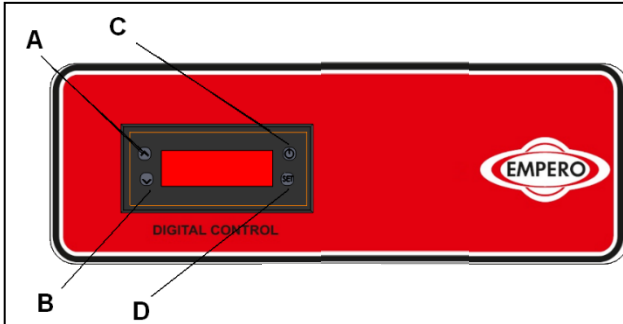
---

-  \*Do not use the appliance in insufficient lighted place.
-  \*Do not touch the moving attachments while the appliance operates.
-  \*Do not install the appliance in the presence of flammable or explosive materials.
-  \*Do not operate the appliance when the machine is empty.
-  \*Do not load so less or more than appliance's capacity.
-  \*Do not attempt to use the appliance without suitable protective equipments.
-  \*Because of any reason if there is a fire or flame flare where the appliance is used, turn off all gas valves and electric contactor switch quickly and use fire extinguisher. Never use water to extinguish the fire.
-  \*All the damages because of not having earthing connection will not be on warranty.
-  \*Prevent the appliance to take sunshine directly.
-  \*Do not place heavy objects on to the appliance. There must be at least 15 cm. space between the appliance and ceiling.

## D OPERATION

---

### \*Control Panel;



- A : Degree increase
- B : Degree reduce
- C : Indicator ON/OFF
- D : SET approval button

### \*Operating;

- Clean the inner and outer surface of the appliance with warm cloth before first use. Then clean with wet cloth and dry.
- Plug in the appliance.
- Set the temperature of the appliance with up-down arrows.
- Operate the appliance for 12 hours when it is empty. at first use .Meanwhile do not open the lids.
- After inserting the products to the appliance, close the lids.
- If the lids are opened often or left opened, these situations can effect the cooling of the products.

## REFRIGERATED CABINETS

### **E      CLEANING & MAINTENANCE**

---

#### ➤ **CLEANING AND MAINTENANCE AFTER EVERY USE**

- Always turn off the appliance and disconnect from the power supply before cleaning.
- Clean the inner surfaces and shelves with moist cloth and then dry after every evacuation of material.
- Clean the control panel with dry cloth.
- Pay attention the cleaning materials to be hygienic.
- Do not use abrasive cleaning chemicals as these can leave harmful residues.
- Do not clean the appliance by spraying water directly ,otherwise electric motor may get damaged.

#### ➤ **PERIODIC CLEANING AND MAINTENANCE**

- Maintenance should be done by qualified person.
- Get the periodic maintenance of the appliance once in every 15 days.
- Clean the condenser with a plastic rigid brush.
- Clean the fan in periodic times.
- Make periodic maintenance of the fire-extinguisher.

## F TROUBLESHOOTING

<b>THE APPLIANCE DOESN'T OPERATE</b>	<ol style="list-style-type: none"><li>1. Check if the appliance is plugged in.</li><li>2. Check the electrical connections and voltage.</li><li>3. Check if the fuse is on or off.</li></ol>
<b>THE APPLIANCE IS NOISY</b>	<ol style="list-style-type: none"><li>1. Check the motor.</li><li>2. If the connection pipes contact with compressor,remove it.</li></ol>
<b>THE APPLIANCE STOPPED</b>	<ol style="list-style-type: none"><li>1. The appliance can stop due to low voltage.In this situation check the voltage.</li><li>2. If there is any leakage current at electric connections,the appliance stops.In this situation call the authorized service.</li></ol>
<b>INNER TEMPERATURE IS TOO HIGH</b>	<ol style="list-style-type: none"><li>1. Clean the condenser.</li><li>2. Check the air conditioning.</li><li>3. If the hot product is inserted,take it off.</li><li>4. If the door is opened,close it.</li></ol>

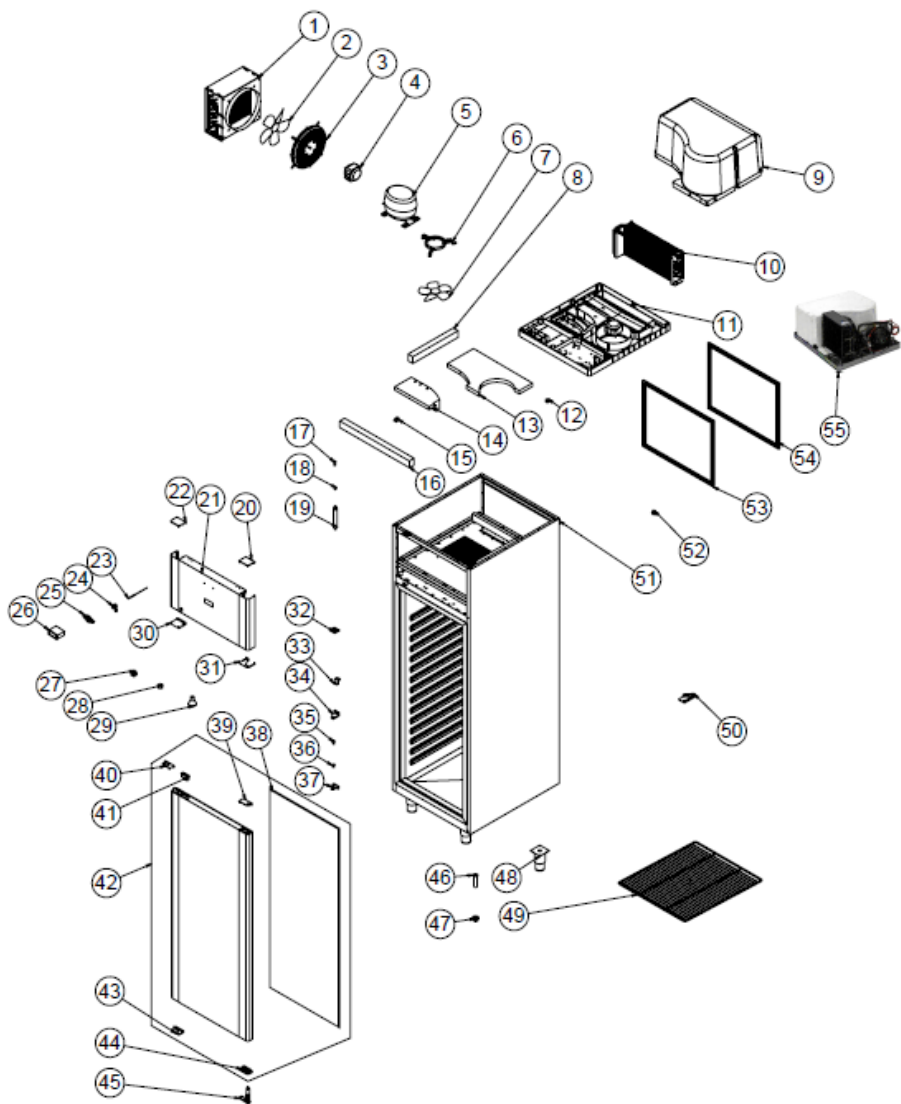
- If cooling is not done at suitable quality
- If any function of security doesn't work
  - Do not use the appliance.

**\*If these problems are still going on,contact with our authorized services.**



# REFRIGERATED CABINETS

## G SPARE PART LIST- EXPLODING DRAWINGS



EMP.70.80.01

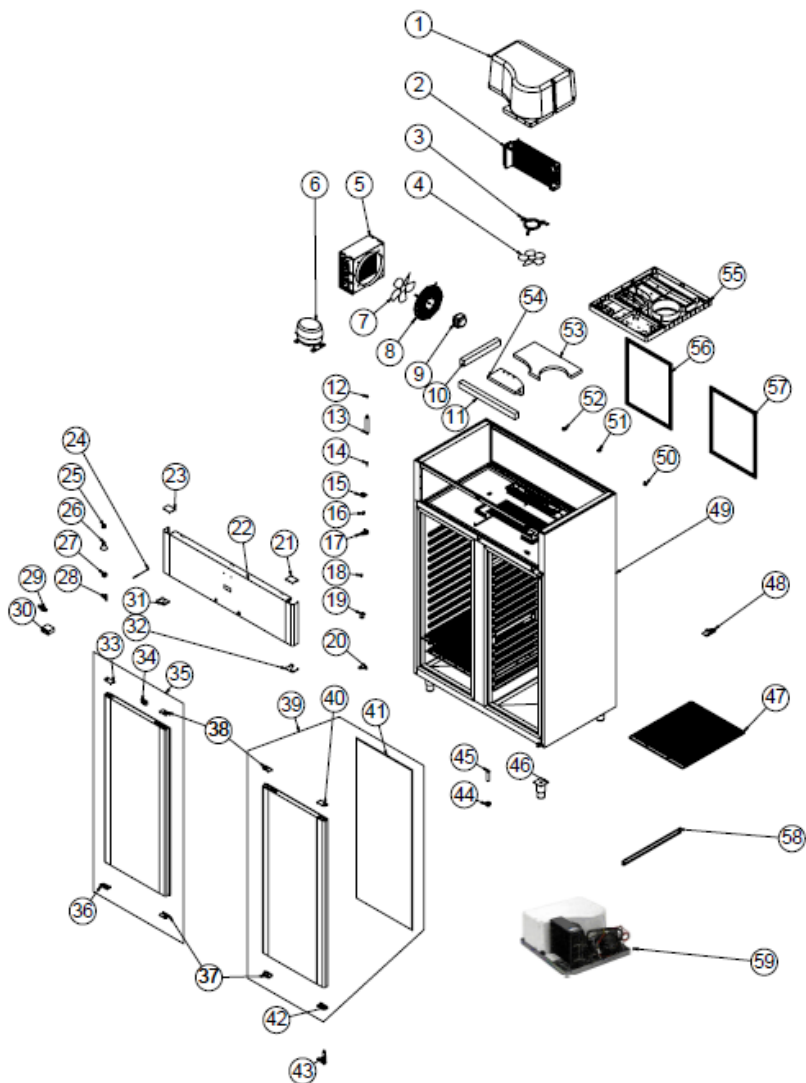
## G SPARE PART LIST- EXPLODING DRAWINGS

PRODUCT CODE : EMP.70.80.01		
NO	PRODUCT NAME	P.CODE
1	CONDENSER POSITIVE (+)	M.SOG-KDS-032
2	WING	M.ELK-HVL-FKN-002
3	FAN CIRCLE WIRE	ERK.M.MUH-001
4	FAN MOTOR	M.ELK-MTR-FMT-014
5	COMPRESSOR	M.SOG-KMS-022
6	FAN PLASTIC	M.PLS-ERK-016
7	WING	M.ELK-HVL-FKN-004
8	SIDE styrofoam	HAM-013
9	INSULATION FOAM	YIZ-ERK1480-MH-0001
10	EVAP POSITIVE	M.SOG-EVP-036
11	MONOBLOCK PLASTIC	M.PLS-ERK-015
12	HOLDER CORNER PLASTIC	M.PLS-ERK-024
13	BOTTOM styrofoam	HAM-015
14	INSULATION UPPER STYROFOAM	HAM-016
15	HOLDER CORNER PLASTIC	M.PLS-ERK-025
16	FRONT styrofoam	HAM-014
17	ENGINE PIN	YTL-ERK.1560-CN-0002
18	SIBO	M.SOG-MUH-001
19	DRAYER	M.SOG-DRY-004
20	BOTTOM LEFT PLASTIC	M.PLS-ERK-032
21	ENGINE FRONT SHUTTER	YSC-ERK.7080-LZ-0031
22	TOP LEFT PLASTIC	M.PLS-ERK-031
23	PROP	ERK.M.ELK-EDM-DGT-012
24	LOCK	M.AKS-KLT-GNL-016
25	METAL LABEL	M.AKS-OZL-MTL-002
26	THERMOSTAT	M.ELK-EDM-DGT-043
27	DOOR SWITCH	M.ELK-SWC-ERK-003
28	SENSE	M.ELK-LMB-DUY-004
29	LED BULB	M.ELK-LED-LMB-001
30	BOTTOM LEFT PLASTIC	M.PLS-ERK-032
31	LOWER RIGHT PLASTIC	M.PLS-ERK-033
32	HINGE	M.AKS-MNT-INX-013
33	SHUTTER LINING SHEET	YSC-ERK.7080-LZ-0065
34	UPPER RIGHT HINGE SHEET	M.AKS-MNT-SC-001
35	PIN	M.AKS-MNT-SC-005
36	BUSH PLASTIC	M.ENJ-ERK-PLS-022

## REFRIGERATED CABINETS

37	BOTTOM LEFT HINGE SHEET	M.AKS-MNT-SC-002
38	GASKET(580*1446,5)	M.CNT-ERK-052
39	HINGE TOP PLASTIC RIGHT	M.ENJ-ERK-PLS-108
40	HAND PLASTIC TOP	M.PLS-ERK-029
41	LOCK PLASTIC	M.ENJ-ERK-PLS-131
42	COVER RIGHT	ARA-ERK.DEPOKAPAK-430S
43	HAND PLASTIC BOTTOM	M.PLS-ERK-030
44	HINGE BOTTOM PLASTIC RIGHT	M.ENJ-ERK-PLS-107
45	HINGE	M.AKS-MNT-SC-006
46	PIPE	M.ENJ-ERK-PLS-002
47	NUT	M.ENJ-ERK-PLS-024
48	FOOT	ERK.M.AKS-AYK-INX-001
49	53*65 WIRE SHELF	M.RAF-ERK-031
50	HOLDER PLASTIC	M.PLS-ERK-023
51	CHASSIS	-
52	CLOSING PLASTIC	M.ENJ-ERK-PLS-132
53	OUTER GASKET	M.CNT-ERK-065
54	INTERNAL GASKET	M.CNT-ERK-066
55	COOLING GROUP	ARA-ERK.7080-AKB-001-S

## G SPARE PART LIST- EXPLODING DRAWINGS



EMP.140.80.01

# REFRIGERATED CABINETS

## G SPARE PART LIST- EXPLODING DRAWINGS

PRODUCT CODE : EMP.140.80.01		
NO	PRODUCT NAME	P.CODE
1	INSULATION FOAM	YIZ-ERK1480-MH-0001
2	EVAP POSITIVE	M.SOG-EVP-036
3	FAN PLASTIC	M.PLS-ERK-016
4	WING	M.ELK-HVL-FKN-004
5	CONDENSER POSITIVE (+)	M.SOG-KDS-032
6	COMPRESSOR	M.SOG-KMS-022
7	WING	M.ELK-HVL-FKN-002
8	FAN CIRCLE WIRE	ERK.M.MUH-001
9	FAN MOTOR	M.ELK-MTR-FMT-014
10	SIDE styrofoam	HAM-013
11	FRONT styrofoam	HAM-014
12	SIBO	M.SOG-MUH-001
13	DRAYER	M.SOG-DRY-004
14	ENGINE PIN	YTL-ERK.1560-CN-0002
15	HINGE	M.AKS-MNT-INX-013
16	PIN	M.AKS-MNT-SC-005
17	UPPER RIGHT HINGE SHEET	M.AKS-MNT-SC-001
18	BUSH PLASTIC	M.ENJ-ERK-PLS-022
19	SHUTTER LINING SHEET	YSC-ERK.7080-LZ-0065
20	BOTTOM LEFT HINGE SHEET	M.AKS-MNT-SC-002
21	BOTTOM LEFT PLASTIC	M.PLS-ERK-032
22	ENGINE FRONT SHUTTER SHEET	YSC-ERK.1480-LZ-0053
23	TOP LEFT PLASTIC	M.PLS-ERK-031
24	PROP	ERK.M.ELK-EDM-DGT-012
25	SENSE	M.ELK-LMB-DUY-004
26	LED BULB	M.ELK-LED-LMB-001
27	DOOR SWITCH	M.ELK-SWC-ERK-003
28	LOCK	M.AKS-KLT-GNL-016
29	METAL LABEL	M.AKS-OZL-MTL-002
30	THERMOSTAT	M.ELK-EDM-DGT-043
31	BOTTOM LEFT PLASTIC	M.PLS-ERK-021
32	LOWER RIGHT PLASTIC	M.PLS-ERK-033
33	HINGE TOP PLASTIC LEFT	M.ENJ-ERK-PLS-110
34	LOCK PLASTIC	M.ENJ-ERK-PLS-131
35	COVER LEFT	ARA-ERK.DEPOKAPAK.SOL-4305

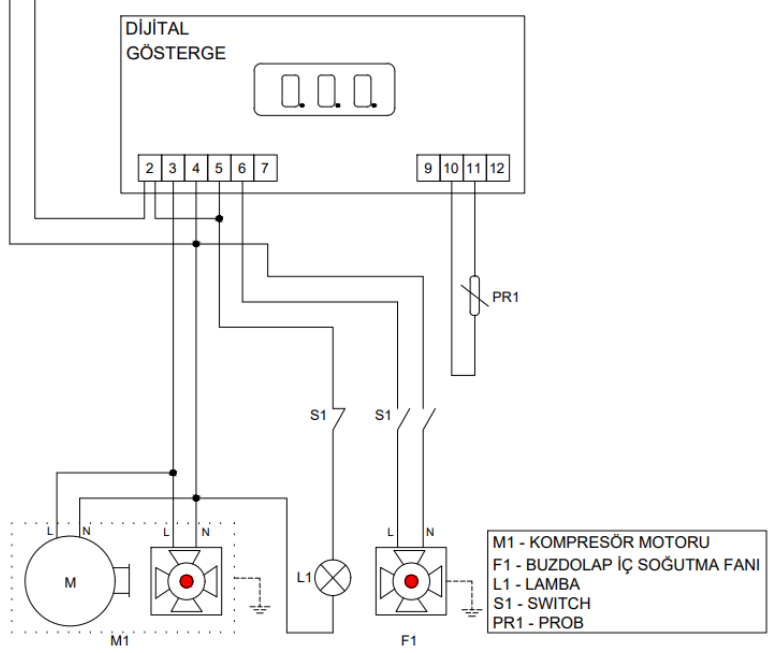
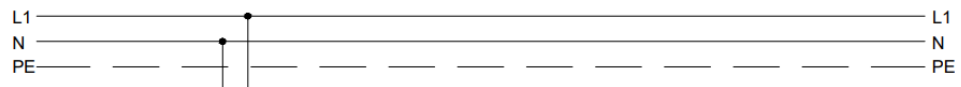
## REFRIGERATED CABINETS

36	HINGE BOTTOM PLASTIC LEFT	M.ENJ-ERK-PLS-109
37	HAND PLASTIC BOTTOM	M.PLS-ERK-030
38	HAND PLASTIC TOP	M.PLS-ERK-029
39	COVER RIGHT	ARA-ERK.DEPOKAPAK-430S
40	HINGE TOP PLASTIC RIGHT	M.ENJ-ERK-PLS-108
41	GASKET(580*1446,5)	M.CNT-ERK-052
42	HINGE BOTTOM PLASTIC RIGHT	M.ENJ-ERK-PLS-107
43	HINGE	M.AKS-MNT-SC-006
44	NUT	M.ENJ-ERK-PLS-024
45	PIPE	M.ENJ-ERK-PLS-002
46	FOOT	ERK.M.AKS-AYK-INX-001
47	53*65 WIRE SHELF	M.RAF-ERK-031
48	HOLDER PLASTIC	M.PLS-ERK-023
49	CHASSIS	-
50	CLOSING PLASTIC	M.ENJ-ERK-PLS-132
51	HOLDER CORNER PLASTIC	M.PLS-ERK-024
52	HOLDER CORNER PLASTIC	M.PLS-ERK-025
53	BOTTOM styrofoam	HAM-015
54	INSULATION UPPER STYROFOAM	HAM-016
55	MONOBLOCK PLASTIC	M.PLS-ERK-015
56	OUTER GASKET	M.CNT-ERK-065
57	INTERNAL GASKET	M.CNT-ERK-066
58	SLIDE SHEET	YSC-ERK.1480-PN-0196
59	COOLING GROUP	ARA-ERK.1480-001-AKB-S

# REFRIGERATED CABINETS

## H ELECTRIC CIRCUIT SCHEMA

70.80.01

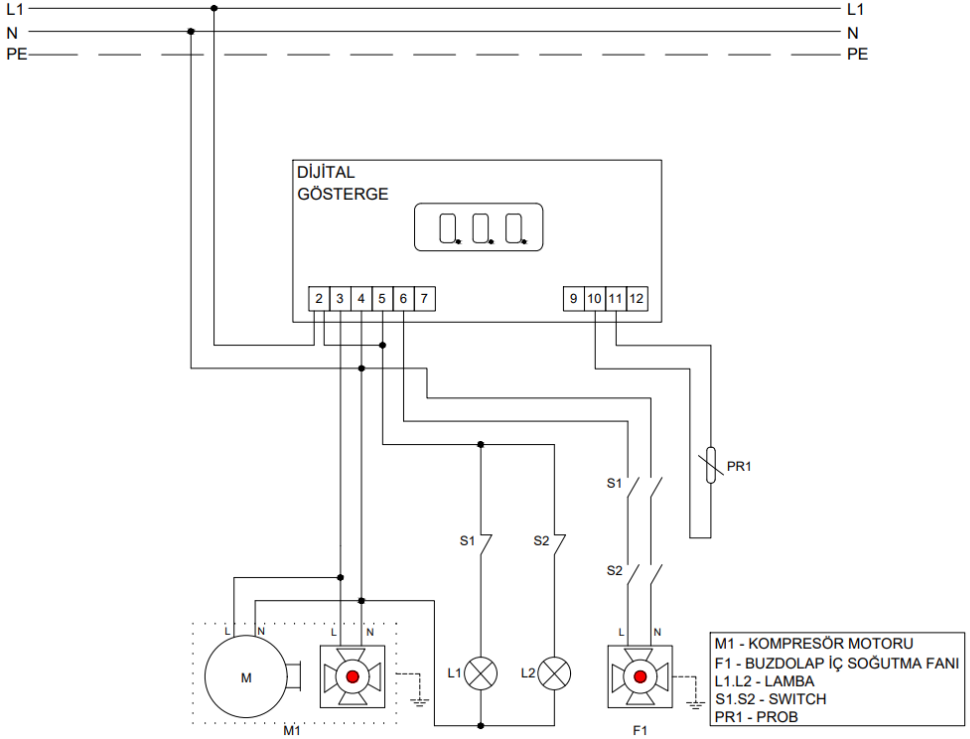


M1 - KOMPRESÖR MOTORU  
 F1 - BUZDOLAP İÇ SOĞUTMA FANI  
 L1 - LAMBA  
 S1 - SWITCH  
 PR1 - PROB

M1 - COMPRESSOR ENGINE  
 F1 - REFRIGERATOR INTERNAL COOLING FAN  
 L1 - LAMP  
 S1 - SWITCH  
 PR1 - PROBE

## H ELECTRIC CIRCUIT SCHEMA

140.80.01



M1 - COMPRESSOR ENGINE  
F1 - REFRIGERATOR INTERNAL COOLING FAN  
L1 - LAMP  
S1 - SWITCH  
PR1 - PROBE