



GLASS DOOR REFRIGERATED CABINETS

CONTENTS

A	GENERAL INFORMATION.....	Page 2
A1	PRODUCT DESCRIPTION	Page 3
A2	TECHNICAL INFORMATION.....	Page 3
A3	TRANSPORTATION	Page 4
A4	UNPACKING	Page 4
B	INSTALLATION.....	Page 4
C	SAFETY INSTRUCTIONS	Page 5
D	OPERATION	Page 6
E	CLEANING & MAINTENANCE.....	Page 7
F	TROUBLESHOOTING	Page 8
G	SPARE PART LIST- EXPLODING DRAWING	Page 9
H	ELECTRIC CIRCUIT SCHEMA	Page 15

A GENERAL INFORMATION

Before installing the appliance, read operation and maintenance instructions carefully. Wrong installation and part changing may damage the product or may cause injury on people. These are not in our company's responsibility to damage the appliance intentionally, negligence, detriments because of disobeying instructions and regulations, wrong connections. Unauthorized intervention to appliance invalidates the warranty.

1. This instruction manual should be kept in a safe place for future reference.
2. **Installation should be made in accordance with ordinances and security rules of that country by a qualified service personnel.**
3. This appliance has to be used by trained person.
4. Please turn off the appliance immediately in the event of malfunction or failure. The appliance should be repaired only by authorized service personnel. Please demand original spare part.

GLASS DOOR REFRIGERATED CABINETS

A1 PRODUCT DESCRIPTION

*The Professional Glass Door Refrigerated Cabinets ,that provides high efficiency has been designed to be used in industrial kitchen.

Product Code	Dimensions (mm)	Weight (kg)	Packaging Dimensions (mm)
EMP.70.80.03	700x800x2050	155	750x900x2170
EMP.140.80.03	1400x800x2050	230	1460x940x2170

A2 TECHNICAL INFORMATION

Product Code	Capacity (Lt)	Power (KW)	Oper. Voltage (V)	Cable (mm ²)	Fuse (A)	Operating Range (°C)
EMP.70.80.03	700	0,25	220-230	3x1,5	25	0 / +5
EMP.140.80.03	1400	0,6	220-230	3x1,5	25	0 / +5

PRODUCT CODE	MODEL
EMP.70.80.03	*Single Door –Glass 2/1 GN interior shelf 3 pieces
EMP.140.80.03	*Double Door-Glass 2/1 GN interior shelf 6 pieces

A3 TRANSPORTATION

*This appliance can not be moved by hand from area to area. It must be moved on pallet with forklift truck.

A4 UNPACKING

*Please unpack the package according to the security codes and ordinances of current country and get rid from the pack. Parts which contacts with food are produced by stainless steel. All plastic parts are marked by material's symbol.

*Please check that all the parts of appliance had come completely and if they are damaged or not during the shipping.

B INSTALLATION

*Please place the product to straight and sturdy ground, please take necessary steps against possibility of overturn.

*Technician who will serve for installation and service for the appliance must be professional on this subject and must have installation and service licenses by the company.

*Connection to Electric Power Supply must be done by authorized person.

*Please be sure that the voltage connected to appliance must be equal with the voltage which is on appliance's label.



This appliance must be connected to an earthed outlet in accordance with safety rules and standard.











*Appliance's earthing must be connected to earthing line on panel which is nearest to electric installation.

*Connection to the main fuse and leak current fuse must be done in accordance with the current regulations.

*If the 2 appliance will be placed adjacently, there must be at least 2 cm space between them. The Condensation is prevented .

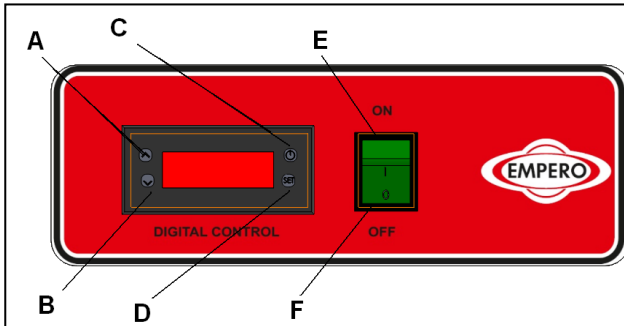
GLASS DOOR REFRIGERATED CABINETS

C SAFETY INSTRUCTIONS

-  *Do not use the appliance in insufficient lighted place.
-  *Do not touch the moving attachments while the appliance operates.
-  *Do not install the appliance in the presence of flammable or explosive materials.
-  *Do not operate the appliance when the machine is empty.
-  *Do not load so less or more than appliance's capacity.
-  *Do not attempt to use the appliance without suitable protective equipments.
-  *Because of any reason if there is a fire or flame flare where the appliance is used, turn off all gas valves and electric contactor switch quickly and use fire extinguisher. Never use water to extinguish the fire.
-  *All the damages because of not having earthing connection will not be on warranty.
-  *Prevent the appliance to take sunshine directly.
-  *Do not place heavy objects on to the appliance. There must be at least 15 cm. space between the appliance and ceiling.

D OPERATION

*Control Panel;



- A : Degree increase
- B : Degree reduce
- C : Indicator ON/OFF
- D : SET approval button
- E : ON position
- F : OFF position

*Operating;

- Clean the inner and outer surface of the appliance with warm cloth before first use. Then clean with wet cloth and dry.
- Plug in the appliance.
- Activate ON/OFF button at control panel.
- Set the temperature of the appliance with up-down arrows.
- Operate the appliance for 12 hours when it is empty. at first use .Meanwhile do not open the lids.
- After inserting the products to the appliance,close the lids.
- If the lids are opened often or left opened,these situations can effect the cooling of the products.
- When the appliance is not needed to be used,switch OFF and unplug the appliance.

GLASS DOOR REFRIGERATED CABINETS

E CLEANING & MAINTENANCE

➤ **CLEANING AND MAINTENANCE AFTER EVERY USE**

- Always turn off the appliance and disconnect from the power supply before cleaning.
- Clean the inner surfaces and shelves with moist cloth and then dry after every evacuation of material.
- Clean the control panel with dry cloth.
- Pay attention the cleaning materials to be hygienic.
- Do not use abrasive cleaning chemicals as these can leave harmful residues.
- Do not clean the appliance by spraying water directly ,otherwise electric motor may get damaged.

➤ **PERIODIC CLEANING AND MAINTENANCE**

- Maintenance should be done by qualified person.
- Get the periodic maintenance of the appliance once in every 15 days.
- Clean the condenser with a plastic rigid brush.
- Clean the fan in periodic times.
- Clean the glass doors according to frequency of use.
- Make periodic maintenance of the fire-extinguisher.



GLASS DOOR REFRIGERATED CABINETS

F TROUBLESHOOTING

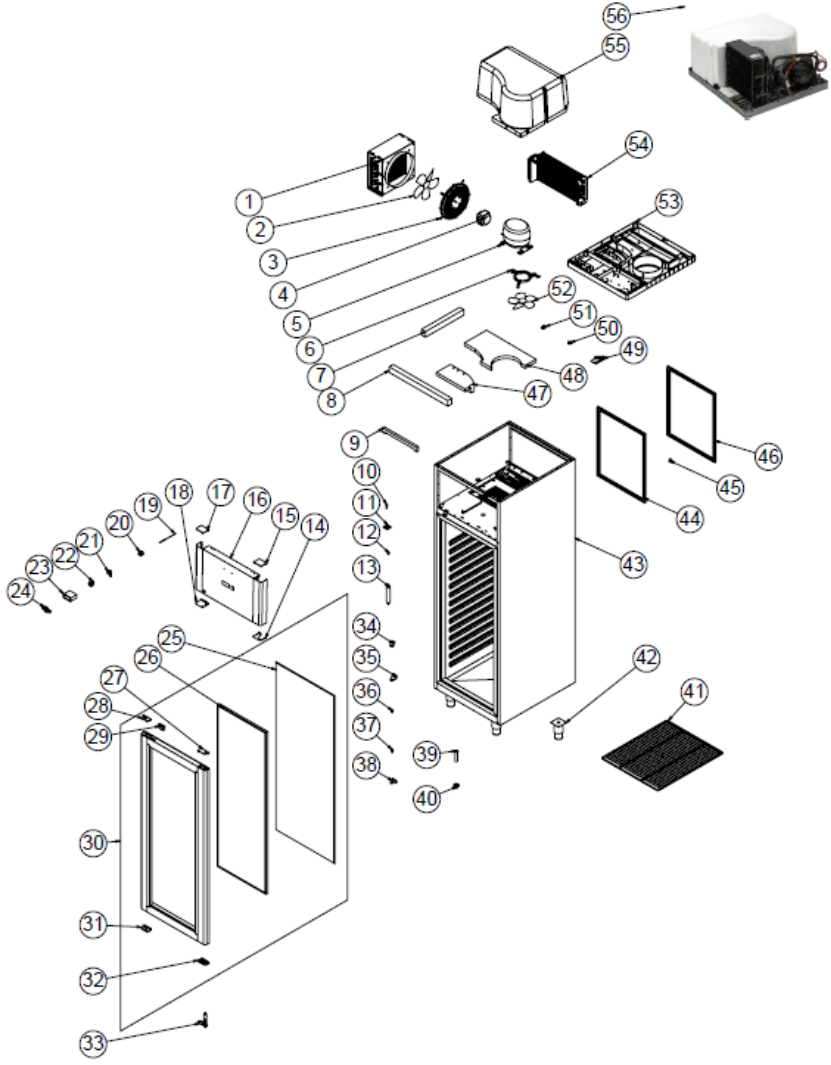
THE APPLIANCE DOESN'T OPERATE	<ol style="list-style-type: none">1. Check if the appliance is plugged in.2. Check the electrical connections and voltage.3. Check if the fuse is on or off.
THE APPLIANCE IS NOISY	<ol style="list-style-type: none">1. Check the motor.2. If the connection pipes contact with compressor, remove it.
THE APPLIANCE STOPPED	<ol style="list-style-type: none">1. The appliance can stop due to low voltage. In this situation check the voltage.2. If there is any leakage current at electric connections, the appliance stops. In this situation call the authorized service.
INNER TEMPERATURE IS TOO HIGH	<ol style="list-style-type: none">1. Clean the condenser.2. Check the air conditioning.3. If the hot product is inserted, take it off.4. If the door is opened, close it.

- If cooling is not done at suitable quality
- If any function of security doesn't work
 - Do not use the appliance.

***If these problems are still going on, contact with our authorized services.**

GLASS DOOR REFRIGERATED CABINETS

G SPARE PART LIST- EXPLODING DRAWINGS



EMP.70.80.03

GLASS DOOR REFRIGERATED CABINETS

G SPARE PART LIST- EXPLODING DRAWINGS

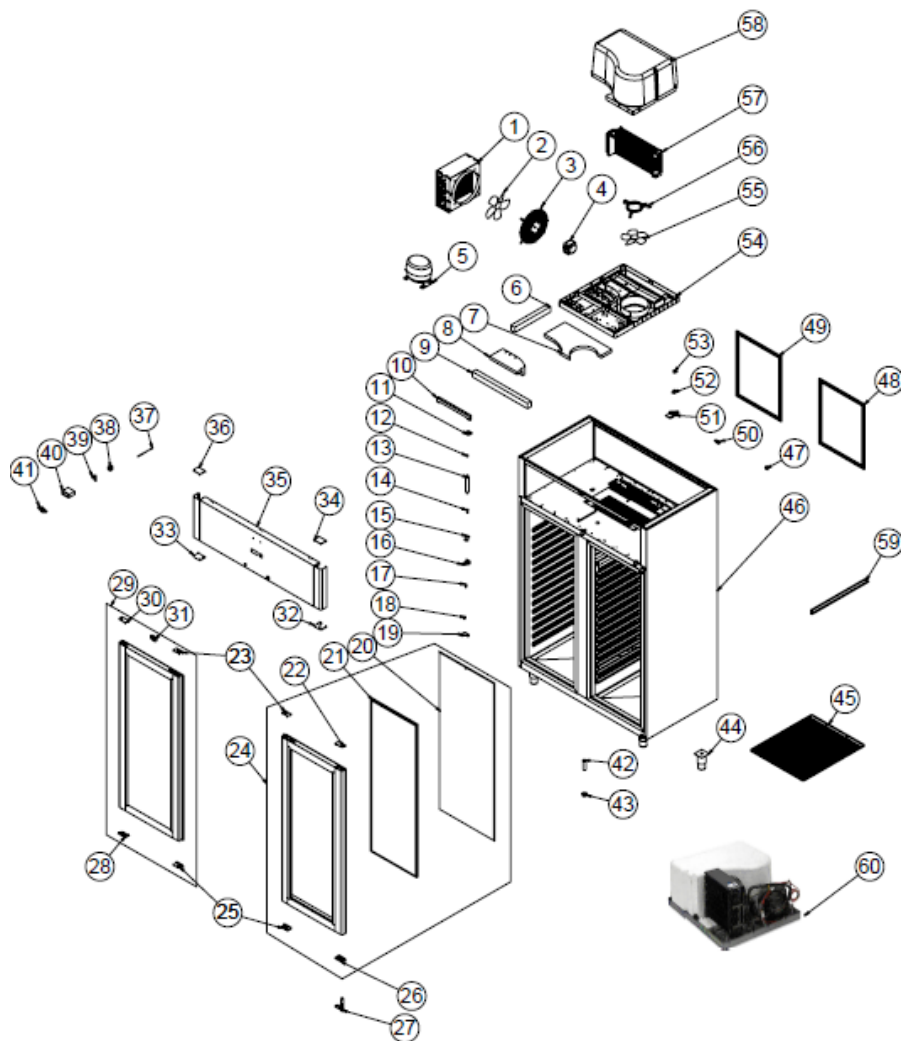
PRODUCT CODE : EMP.70.80.03		
NO	PRODUCT NAME	P. CODE
1	CONDENSER POSITIVE (+)	M.SOG-KDS-032
2	WING	M.ELK-HVL-FKN-002
3	FAN CIRCLE WIRE	ERK.M.MUH-001
4	FAN MOTOR	M.ELK-MTR-FMT-014
5	COMPRESSOR	M.SOG-KMS-022
6	FAN PLASTIC	M.PLS-ERK-016
7	SIDE styrofoam	HAM-013
8	FRONT styrofoam	HAM-014
9	LED LAMP	M.ELK-LMB-ARM-006
10	ENGINE PIN	YTL-ERK.1560-CN-0002
11	HINGE	M.AKS-MNT-INX-013
12	SIBO	M.SOG-MUH-001
13	DRAWER	M.SOG-DRY-004
14	LOWER RIGHT PLASTIC	M.PLS-ERK-033
15	BOTTOM LEFT PLASTIC	M.PLS-ERK-032
16	ENGINE FRONT SHUTTER	YSC-ERK.7080-LZ-0061
17	TOP LEFT PLASTIC	M.PLS-ERK-031
18	BOTTOM LEFT PLASTIC	M.PLS-ERK-032
19	PROP	ERK.M.ELK-EDM-DGT-012
20	DOOR SWITCH	M.ELK-SWC-ERK-003
21	LOCK	M.AKS-KLT-GNL-016
22	SWITCH	M.ELK-SLT-ANL-002
23	THERMOSTAT	M.ELK-EDM-DGT-043
24	METAL LABEL	M.AKS-OZL-MTL-002
25	GASKET(580*1446,5)	M.CNT-ERK-052
26	1400x487 HOTGLASS	M.CAM-ERK-ISI CAM-007
27	HINGE TOP PLASTIC RIGHT	M.ENJ-ERK-PLS-108
28	HAND PLASTIC TOP	M.PLS-ERK-029
29	LOCK PLASTIC	M.ENJ-ERK-PLS-131
30	GLASS COVER RIGHT	ARA-7080-CAMAKB-001
31	HAND PLASTIC BOTTOM	M.PLS-ERK-030
32	HINGE BOTTOM PLASTIC RIGHT	M.ENJ-ERK-PLS-107
33	HINGE	M.AKS-MNT-SC-006
34	SHUTTER LINING SHEET	YSC-ERK.7080-LZ-0065
35	UPPER RIGHT HINGE SHEET	M.AKS-MNT-SC-001
36	BUSH PLASTIC	M.ENJ-ERK-PLS-022

GLASS DOOR REFRIGERATED CABINETS

37	PIN	M.AKS-MNT-SC-005
38	BOTTOM LEFT HINGE SHEET	M.AKS-MNT-SC-002
39	PIPE	M.ENJ-ERK-PLS-002
40	NUT	M.ENJ-ERK-PLS-024
41	53*65 WIRE SHELF	M.RAF-ERK-031
42	FOOT	M.AKS-AYK-INX-001
43	CHASSIS	-
44	INTERNAL GASKET	M.CNT-ERK-066
45	CLOSING PLASTIC	M.ENJ-ERK-PLS-132
46	OUTER GASKET	M.CNT-ERK-065
47	INSULATION UPPER STYROFOAM	HAM-016
48	BOTTOM styrofoam	HAM-015
49	HOLDER PLASTIC	M.PLS-ERK-023
50	HOLDER CORNER PLASTIC	M.PLS-ERK-024
51	HOLDER CORNER PLASTIC	M.PLS-ERK-025
52	WING	M.ELK-HVL-FKN-004
53	MONOBLOCK PLASTIC	M.PLS-ERK-015
54	EVAP POSITIVE	M.SOG-EVP-036
55	INSULATION FOAM	YIZ-ERK1480-MH-0001
56	COOLING GROUP	ARA-ERK.7080-AKB-003-S

GLASS DOOR REFRIGERATED CABINETS

G SPARE PART LIST- EXPLODING DRAWINGS



EMP.140.80.03

GLASS DOOR REFRIGERATED CABINETS

G SPARE PART LIST- EXPLODING DRAWINGS

ÜRÜN KODU : EMP.140.80.03		
NO	ÜRÜN ADI	Ü. KODU
1	CONDENSER POSITIVE (+)	M.SOG-KDS-032
2	WING	M.ELK-HVL-FKN-002
3	FAN CIRCLE WIRE	ERK.M.MUH-001
4	FAN MOTOR	M.ELK-MTR-FMT-014
5	COMPRESSOR	M.SOG-KMS-007
6	SIDE styrofoam	HAM-013
7	BOTTOM styrofoam	HAM-015
8	INSULATION UPPER STYROFOAM	HAM-016
9	FRONT styrofoam	HAM-014
10	LED LAMP	M.ELK-LMB-ARM-006
11	HINGE	M.AKS-MNT-INX-013
12	SIBO	M.SOG-MUH-001
13	DRAYER	M.SOG-DRY-004
14	ENGINE PIN	YTL-ERK.1560-CN-0002
15	SHUTTER LINING SHEET	YSC-ERK.7080-LZ-0065
16	UPPER RIGHT HINGE SHEET	M.AKS-MNT-SC-001
17	PIN	M.AKS-MNT-SC-005
18	BUSH PLASTIC	M.ENJ-ERK-PLS-022
19	BOTTOM LEFT HINGE SHEET	M.AKS-MNT-SC-002
20	GASKET(580*1446,5)	M.CNT-ERK-052
21	1400x487 HOTGLASS	M.CAM-ERK-ISI CAM-007
22	HINGE TOP PLASTIC RIGHT	M.ENJ-ERK-PLS-108
23	HAND PLASTIC TOP	M.PLS-ERK-029
24	GLASS COVER RIGHT	ARA-7080-CAMAKB-001
25	HAND PLASTIC BOTTOM	M.PLS-ERK-030
26	HINGE BOTTOM PLASTIC RIGHT	M.ENJ-ERK-PLS-107
27	HINGE	M.AKS-MNT-SC-006
28	HINGE BOTTOM PLASTIC LEFT	M.ENJ-ERK-PLS-109
29	GLASS COVER LEFT	ARA-1480-CAMAKB-001
30	HINGE TOP PLASTIC LEFT	M.ENJ-ERK-PLS-110
31	LOCK PLASTIC	M.ENJ-ERK-PLS-131
32	LOWER RIGHT PLASTIC	M.PLS-ERK-033
33	BOTTOM LEFT PLASTIC	M.PLS-ERK-021
34	BOTTOM LEFT PLASTIC	M.PLS-ERK-032
35	ENGINE FRONT SHUTTER SHEET	YSC-ERK.1480-LZ-0060
36	TOP LEFT PLASTIC	M.PLS-ERK-031

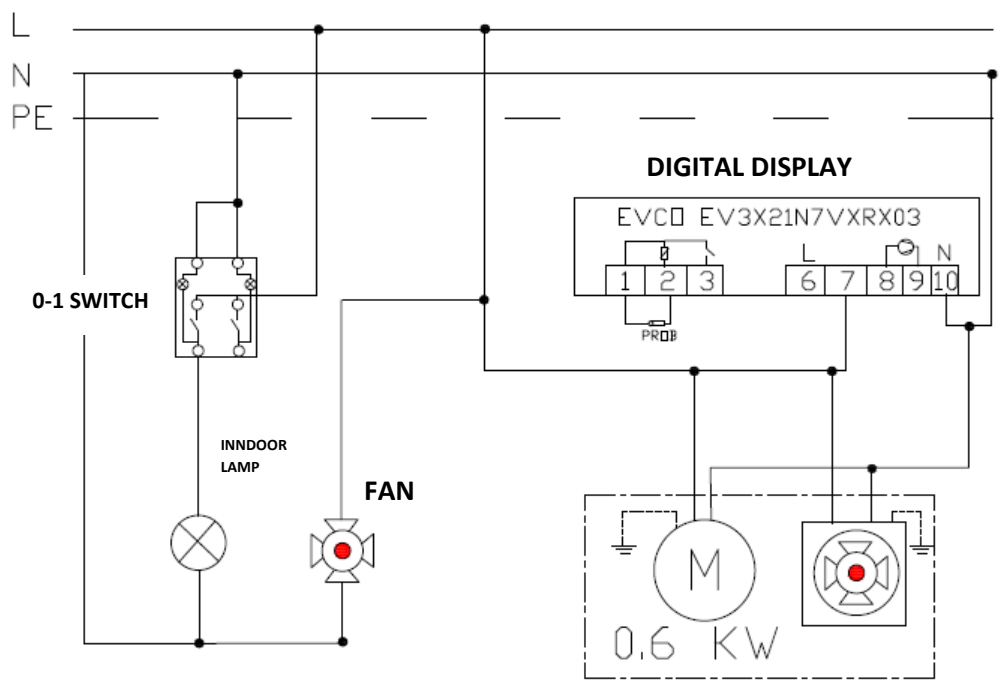


GLASS DOOR REFRIGERATED CABINETS

37	PROP	ERK.M.ELK-EDM-DGT-012
38	SWITCH	ERK.M.ELK-SLT-ANL-002
39	LOCK	M.AKS-KLT-GNL-016
40	THERMOSTAT	M.ELK-EDM-DGT-043
41	METAL LABEL	M.AKS-OZL-MTL-002
42	PIPE	M.ENJ-ERK-PLS-002
43	NUT	M.ENJ-ERK-PLS-024
44	FOOT	ERK.M.AKS-AYK-INX-001
45	53*65 WIRE SHELF	M.RAF-ERK-031
46	CHASSIS	-
47	CLOSING PLASTIC	M.ENJ-ERK-PLS-132
48	OUTER GASKET	M.CNT-ERK-065
49	INTERNAL GASKET	M.CNT-ERK-066
50	DOOR SWITCH	M.ELK-SWC-ERK-003
51	HOLDER PLASTIC	M.PLS-ERK-023
52	HOLDER CORNER PLASTIC	M.PLS-ERK-024
53	HOLDER CORNER PLASTIC	M.PLS-ERK-025
54	MONOBLOCK PLASTIC	M.PLS-ERK-015
55	WING	M.ELK-HVL-FKN-004
56	FAN PLASTIC	M.PLS-ERK-016
57	EVAP POSITIVE	M.SOG-EVP-036
58	INSULATION FOAM	YIZ-ERK1480-MH-0001
59	SLIDE SHEET	YSC-ERK.1480-PN-0196
60	COOLING GROUP	ARA-ERK.1480-0003-AKB-S

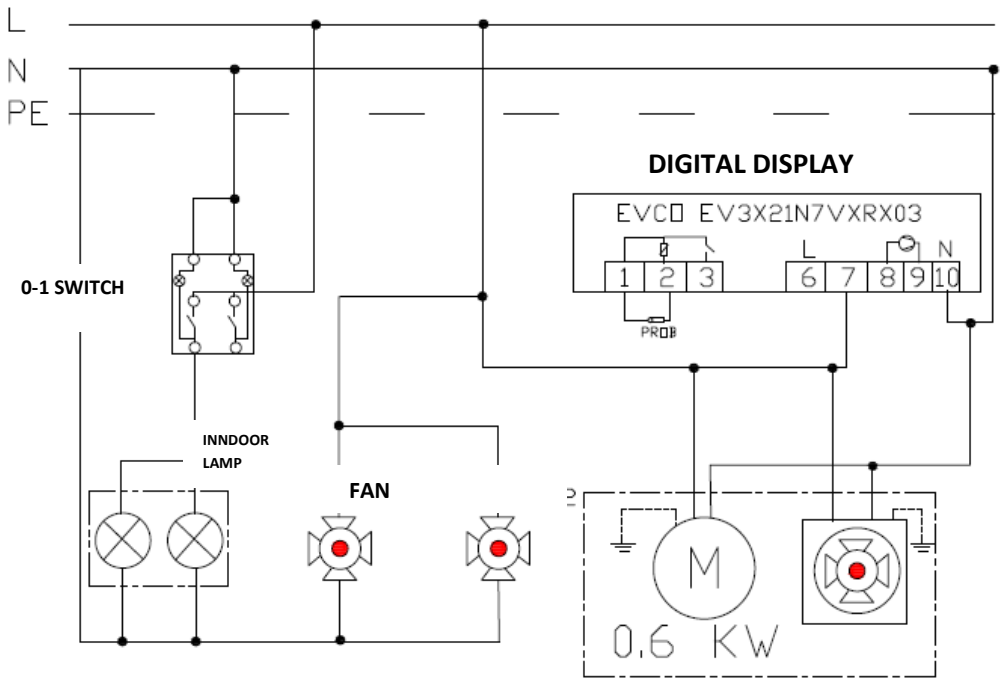
GLASS DOOR REFRIGERATED CABINETS

H ELECTRIC CIRCUIT SCHEMA



EMP.70.80.03

H ELECTRIC CIRCUIT SCHEMA



EMP.140.80.03