

CONTENTS

A	GENERAL INFORMATION.....	Page 2
A1	PRODUCT DESCRIPTION	Page 3
A2	TECHNICAL INFORMATION	Page 3
A3	TRANSPORTATION	Page 4
A4	UNPACKING	Page 4
B	INSTALLATION	Page 4
C	SAFETY INSTRUCTIONS.....	Page 5
D	OPERATION	Page 6
E	CLEANING & MAINTENANCE.....	Page 7
F	TROUBLESHOOTING	Page 8
G	SPARE PART LIST- EXPLODING DRAWING	Page 9
H	ELECTRIC CIRCUIT SCHEMA.....	Page 15

A GENERAL INFORMATION

Before installing the appliance, read operation and maintenance instructions carefully. Wrong installation and part changing may damage the product or may cause injury on people. These are not in our company's responsibility to damage the appliance intentionally, negligence, detriments because of disobeying instructions and regulations, wrong connections. Unauthorized intervention to appliance invalidates the warranty.

1. This instruction manual should be kept in a safe place for future reference.
2. **Installation should be made in accordance with ordinances and security rules of that country by a qualified service personnel.**
3. This appliance has to be used by trained person.
4. Please turn off the appliance immediately in the event of malfunction or failure. The appliance should be repaired only by authorized service personnel. Please demand original spare part.

REFRIGERATED CABINETS-PATISSERIE

A1 PRODUCT DESCRIPTION

*The Professional Refrigerated Cabinets-Patisserie (with fan) ,that provides high efficiency has been designed to be used in industrial kitchen.

Product Code	Dimensions (mm)	Weight (kg)	Packaging Dimensions (mm)
EMP.70.95.01	700x800x2050	130	750x890x2170
EMP.140.95.01	1400X800X2050	220	1450X890X2170
EMP.70.95.01-40	700x950x2050	150	

A2 TECHNICAL INFORMATION

Kodu	EMP.70.95.01	EMP.140.95.01	EMP.70.95.01-40
Capacity (Lt)	700	1400	40 Tepsi
Gas Type	R290	R290	R290
Power (Kw)	0,69	0,26	0,16
Operating Voltage (V)	220-230	220-230	220-230
Cable (mm²)	3x1,5	3x1,5	3x1,5
Fuse (A)	25	25	25
Operat. Range (°C)	0 / +5	0 / +5	0 / +5
Density (kg/m³)	40	40	40

Model
*20 pieces 40x60 tray capacity.
*2x20 pieces 40x60 tray capacity.

REFRIGERATED CABINETS-PATISSERIE COOLING

A3 TRANSPORTATION

*This appliance can not be moved by hand from area to area.It must be moved on pallet with forklift truck.

A4 UNPACKING

*Please unpack the package according to the security codes and ordinances of current country and get rid from the pack.Parts which contacts with food are produced by stainless steel.All plastic parts are marked by material's symbol.

*Please check that all the parts of appliance had come completely and if they are damaged or not during the shipping.

B INSTALLATION

*Please place the product to straight and sturdy ground,please take necessary steps against possibility of overturn.

*Technician who will serve for installation and service for the appliance must be professional on this subject and must have installation and service licenses by the company.

*Connection to Electric Power Supply must be done by authorized person.

*Please be sure that the voltage connected to appliance must be equal with the voltage which is on appliance's label.



This appliance must be connected to an earthed outlet in accordance with safety rules and standard.











*Appliance's earthing must be connected to earthing line on panel which is nearest to electric installation.

*Connection to the main fuse and leak current fuse must be done in accordance with the current regulations.

*If the 2 appliance will be placed adjacently,there must be at least 2 cm space between them.The Condensation is prevented .

REFRIGERATED CABINETS-PATISSERIE

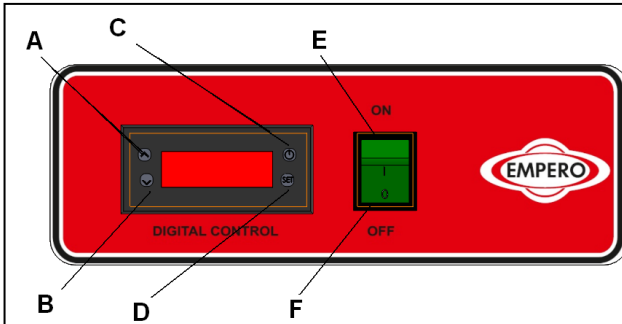
C SAFETY INSTRUCTIONS

-  *Do not use the appliance in insufficient lighted place.
-  *Do not touch the moving attachments while the appliance operates.
-  *Do not install the appliance in the presence of flammable or explosive materials.
-  *Do not operate the appliance when the machine is empty.
-  *Do not load so less or more than appliance's capacity.
-  *Do not attempt to use the appliance without suitable protective equipments.
-  *Because of any reason if there is a fire or flame flare where the appliance is used,turn off all gas valves and electric contactor switch quickly and use fire extinguisher .Never use water to extinguish the fire.
-  *All the damages because of not having earthing connection will not be on warranty.
-  *Prevent the appliance to take sunshine directly.
-  *Do not place heavy objects on to the appliance. There must be at least 15 cm. space between the appliance and ceiling.

REFRIGERATED CABINETS-PATISSERIE COOLING

D OPERATION

*Control Panel;



- A : Degree increase
- B : Degree reduce
- C : Indicator ON/OFF
- D : SET approval button
- E : ON position
- F : OFF position

*Operating;

- Clean the inner and outer surface of the appliance with warm cloth before first use. Then clean with wet cloth and dry.
- Plug in the appliance.
- Activate ON/OFF button at control panel.
- Set the temperature of the appliance with up-down arrows.
- Operate the appliance for 12 hours when it is empty. at first use .Meanwhile do not open the lids.
- After inserting the products to the appliance, close the lids.
- If the lids are opened often or left opened, these situations can effect the cooling of the products.
- When the appliance is not needed to be used, switch OFF and unplug the appliance.

REFRIGERATED CABINETS-PATISSERIE

E CLEANING & MAINTENANCE

➤ **CLEANING AND MAINTENANCE AFTER EVERY USE**

- Always turn off the appliance and disconnect from the power supply before cleaning.
- Clean the inner surfaces and shelves with moist cloth and then dry after every evacuation of material.
- Clean the control panel with dry cloth.
- Pay attention the cleaning materials to be hygienic.
- Do not use abrasive cleaning chemicals as these can leave harmful residues.
- Do not clean the appliance by spraying water directly ,otherwise electric motor may get damaged.

➤ **PERIODIC CLEANING AND MAINTENANCE**

- Maintenance should be done by qualified person.
- Get the periodic maintenance of the appliance once in every 15 days.
- Clean the condenser at motor with a plastic rigid brush.
- Make periodic maintenance of the fire-extinguisher.

REFRIGERATED CABINETS-PATISSERIE COOLING

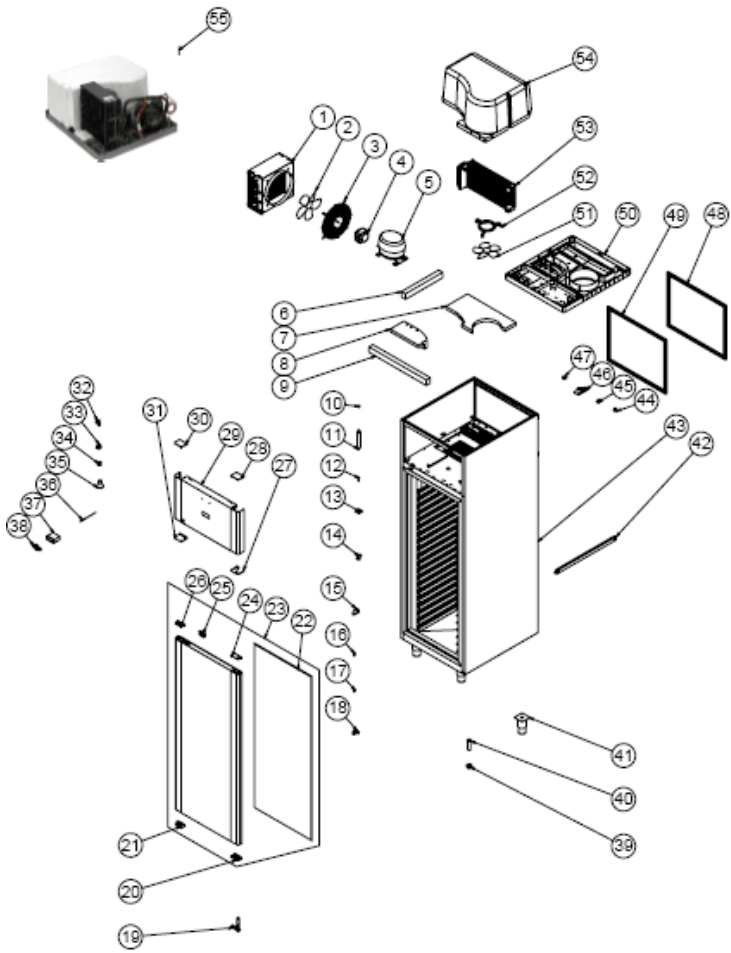
F TROUBLESHOOTING

THE APPLIANCE DOESN'T OPERATE	<ol style="list-style-type: none">1. Check if the appliance is plugged in.2. Check the electrical connections and voltage.3. Check if the fuse is on or off.
THE APPLIANCE IS NOISY	<ol style="list-style-type: none">1. Check the motor.2. If the connection pipes contact with compressor,remove it.
THE APPLIANCE STOPPED	<ol style="list-style-type: none">1. The appliance can stop due to low voltage.In this situation check the voltage.2. If there is any leakage current at electric connections,the appliance stops.In this situation call the authorized service.
INNER TEMPERATURE IS TOO HIGH	<ol style="list-style-type: none">1. Clean the condenser.2. Check the air conditioning.3. If the hot product is inserted,take it off.4. If the door is opened,close it.
<ul style="list-style-type: none">• If cooling is not done at suitable quality• If any function of security doesn't work<ul style="list-style-type: none">➤ Do not use the appliance.	

***If these problems are still going on,contact with our authorized services.**

REFRIGERATED CABINETS-PATISSERIE

G SPARE PART LIST- EXPLODING DRAWINGS



PRODUCT CODE : EMP.70.95.01		
NO	PRODUCT NAME	P. CODE
1	CONDENSER POSITIVE (+)	M.SOG-KDS-032
2	WING	M.ELK-HVL-FKN-002
3	FAN CIRCLE WIRE	ERK.M.MUH-001
4	FAN MOTOR	M.ELK-MTR-FMT-014
5	COMPRESSOR	M.SOG-KMS-022
6	SIDE styrofoam	HAM-013
7	BOTTOM styrofoam	HAM-015

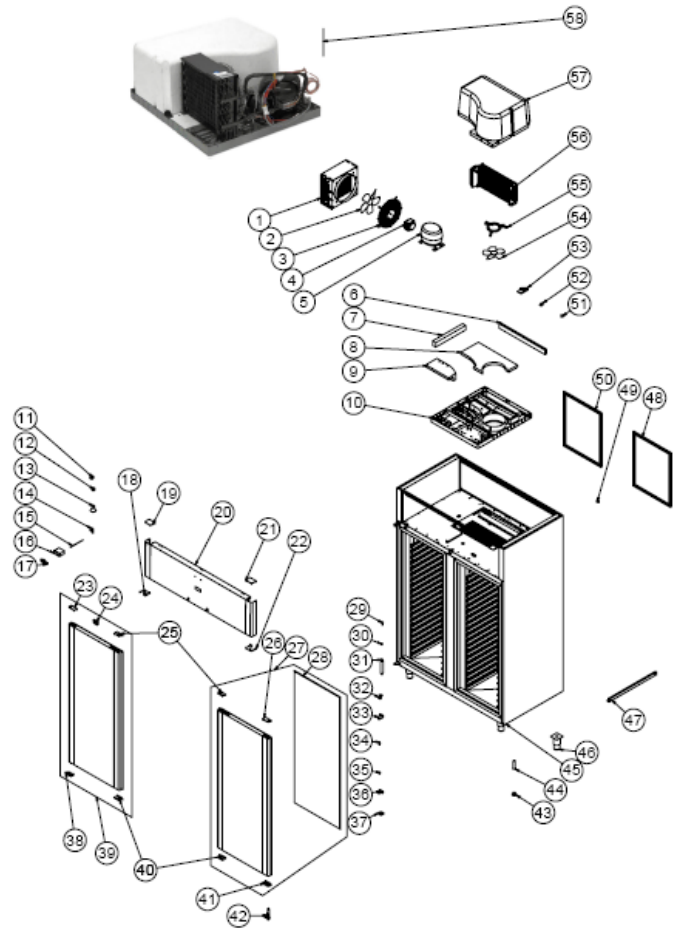


REFRIGERATED CABINETS-PATISSERIE COOLING

8	INSULATION UPPER STYROFOAM	HAM-016
9	FRONT styrofoam	HAM-014
10	SIBO	M.SOG-MUH-001
11	DRAYER	M.SOG-DRY-004
12	ENGINE PIN	YTL-ERK.1560-CN-0002
13	HINGE	M.AKS-MNT-INX-013
14	SHUTTER LINING SHEET	YSC-ERK.7080-LZ-0065
15	UPPER RIGHT HINGE SHEET	M.AKS-MNT-SC-001
16	PIN	M.AKS-MNT-SC-005
17	BUSH PLASTIC	M.ENJ-ERK-PLS-022
18	BOTTOM LEFT HINGE SHEET	M.AKS-MNT-SC-002
19	HINGE	M.AKS-MNT-SC-006
20	HINGE BOTTOM PLASTIC RIGHT	M.ENJ-ERK-PLS-107
21	HAND PLASTIC BOTTOM	M.PLS-ERK-030
22	GASKET(580*1446,5)	M.CNT-ERK-052
23	COVER RIGHT	ARA-ERK.DEPOKAPAK-4305
24	HINGE TOP PLASTIC RIGHT	M.ENJ-ERK-PLS-108
25	LOCK PLASTIC	M.ENJ-ERK-PLS-131
26	HAND PLASTIC TOP	M.PLS-ERK-029
27	LOWER RIGHT PLASTIC	M.PLS-ERK-033
28	BOTTOM LEFT PLASTIC	M.PLS-ERK-032
29	ENGINE FRONT SHUTTER	YSC-ERK.7080-LZ-0031
30	TOP LEFT PLASTIC	M.PLS-ERK-031
31	BOTTOM LEFT PLASTIC	M.PLS-ERK-032
32	LOCK	M.AKS-KLT-GNL-016
33	DOOR SWITCH	M.ELK-SWC-ERK-003
34	SENSE	M.ELK-LMB-DUY-004
35	LED BULB	M.ELK-LED-LMB-001
36	PROP	ERK.M.ELK-EDM-DGT-012
37	THERMOSTAT	M.ELK-EDM-DGT-043
38	METAL LABEL	M.AKS-OZL-MTL-002
39	NUT	M.ENJ-ERK-PLS-024
40	PIPE	M.ENJ-ERK-PLS-002
41	FOOT	ERK.M.AKS-AYK-INX-001
42	SLIDE SHEET	YSC-ERK.7095-PN-0073
43	CHASSIS	-
44	CLOSING PLASTIC	M.ENJ-ERK-PLS-132
45	HOLDER CORNER PLASTIC	M.PLS-ERK-024
46	HOLDER PLASTIC	M.PLS-ERK-023
47	HOLDER CORNER PLASTIC	M.PLS-ERK-025
48	OUTER GASKET	M.CNT-ERK-065
49	INTERNAL GASKET	M.CNT-ERK-066
50	MONOBLOCK PLASTIC	M.PLS-ERK-015
51	WING	M.ELK-HVL-FKN-004
52	FAN PLASTIC	M.PLS-ERK-016
53	EVAP POSITIVE	M.SOG-EVP-036
54	INSULATION FOAM	YIZ-ERK1480-MH-0001
55	COOLING GROUP	ARA-ERK.7080-AKB-001-S

REFRIGERATED CABINETS-PATISSERIE

G SPARE PART LIST- EXPLODING DRAWINGS



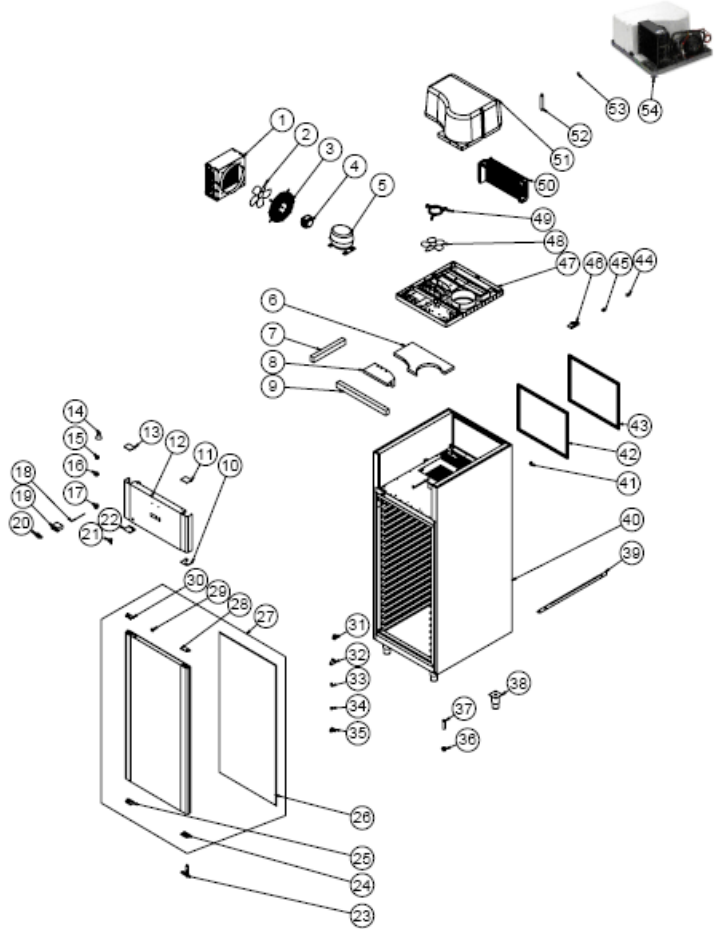
PRODUCT CODE : EMP.140.95.01		
NO	PRODUCT NAME	P. CODE
1	CONDENSER POSITIVE (+)	M.SOG-KDS-032
2	WING	M.ELK-HVL-FKN-002
3	FAN CIRCLE WIRE	ERK.M.MUH-001
4	FAN MOTOR	M.ELK-MTR-FMT-014
5	COMPRESSOR	M.SOG-KMS-022
6	FRONT styrofoam	HAM-014
7	SIDE styrofoam	HAM-013
8	BOTTOM styrofoam	HAM-015

REFRIGERATED CABINETS-PATISSERIE COOLING

9	INSULATION UPPER STYROFOAM	HAM-016
10	MONOBLOCK PLASTIC	M.PLS-ERK-015
11	DOOR SWITCH	M.ELK-SWC-ERK-003
12	SENSE	M.ELK-LMB-DUY-004
13	LED BULB	M.ELK-LED-LMB-001
14	LOCK	M.AKS-KLT-GNL-016
15	PROP	ERK.M.ELK-EDM-DGT-012
16	THERMOSTAT	M.ELK-EDM-DGT-043
17	METAL LABEL	M.AKS-OZL-MTL-002
18	BOTTOM LEFT PLASTIC	M.PLS-ERK-021
19	TOP LEFT PLASTIC	M.PLS-ERK-031
20	ENGINE FRONT SHUTTER SHEET	YSC-ERK.1480-LZ-0053
21	BOTTOM LEFT PLASTIC	M.PLS-ERK-032
22	LOWER RIGHT PLASTIC	M.PLS-ERK-033
23	HINGE TOP PLASTIC LEFT	M.ENJ-ERK-PLS-110
24	LOCK PLASTIC	M.ENJ-ERK-PLS-131
25	HAND PLASTIC TOP	M.PLS-ERK-029
26	HINGE TOP PLASTIC RIGHT	M.ENJ-ERK-PLS-108
27	COVER RIGHT	ARA-ERK.DEPOKAPAK-430S
28	GASKET(580*1446,5)	M.CNT-ERK-052
29	ENGINE PIN	YTL-ERK.1560-CN-0002
30	SIBO	M.SOG-MUH-001
31	DRAYER	M.SOG-DRY-004
32	SHUTTER LINING SHEET	YSC-ERK.7080-LZ-0065
33	UPPER RIGHT HINGE SHEET	M.AKS-MNT-SC-001
34	PIN	M.AKS-MNT-SC-005
35	BUSH PLASTIC	M.ENJ-ERK-PLS-022
36	BOTTOM LEFT HINGE SHEET	M.AKS-MNT-SC-002
37	HINGE	M.AKS-MNT-INX-013
38	HINGE BOTTOM PLASTIC LEFT	M.ENJ-ERK-PLS-109
39	COVER LEFT	ARA-ERK.DEPOKAPAK.SOL-430S
40	HAND PLASTIC BOTTOM	M.PLS-ERK-030
41	HINGE BOTTOM PLASTIC RIGHT	M.ENJ-ERK-PLS-107
42	HINGE	M.AKS-MNT-SC-006
43	NUT	M.ENJ-ERK-PLS-024
44	PIPE	M.ENJ-ERK-PLS-002
45	CHASSIS	-
46	FOOT	ERK.M.AKS-AYK-INX-001
47	SLIDE SHEET	YSC-ERK.7095-PN-0073
48	OUTER GASKET	M.CNT-ERK-065
49	CLOSING PLASTIC	M.ENJ-ERK-PLS-132
50	INTERNAL GASKET	M.CNT-ERK-066
51	HOLDER CORNER PLASTIC	M.PLS-ERK-024
52	HOLDER CORNER PLASTIC	M.PLS-ERK-025
53	HOLDER PLASTIC	M.PLS-ERK-023
54	WING	M.ELK-HVL-FKN-004
55	FAN PLASTIC	M.PLS-ERK-016
56	EVAP POSITIVE	M.SOG-EVP-036
57	INSULATION FOAM	YIZ-ERK1480-MH-0001
58	COOLING GROUP	ARA-ERK.1480-001-AKB-S

REFRIGERATED CABINETS-PATISSERIE

G SPARE PART LIST- EXPLODING DRAWINGS



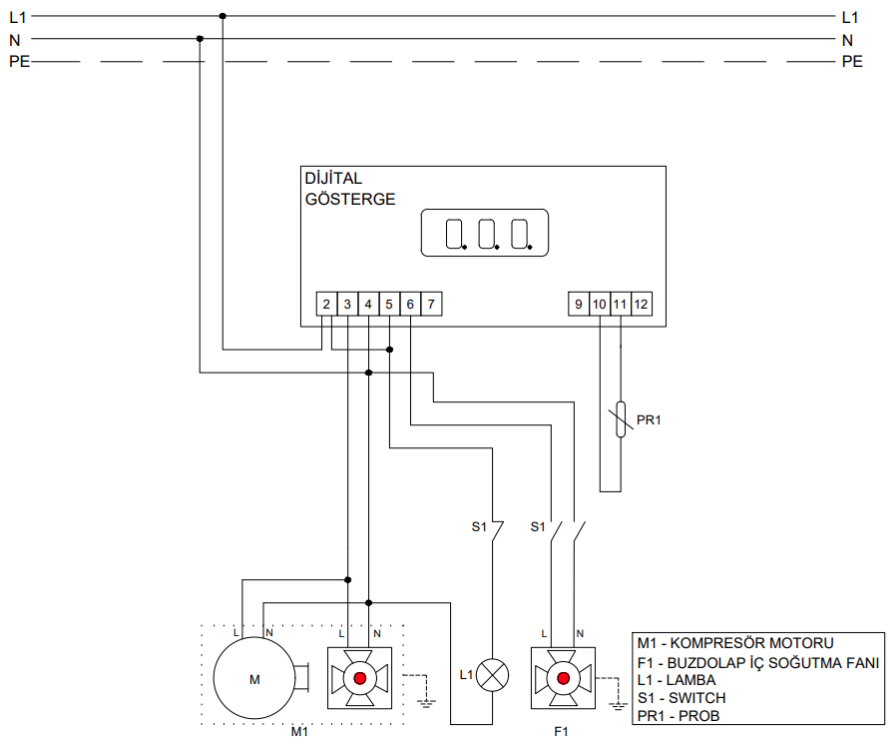
PRODUCT CODE : EMP.70.95.01-40		
NO	PRODUCT NAME	P. CODE
1	CONDENSER POSITIVE (+)	M.SOG-KDS-032
2	WING	M.ELK-HVL-FKN-002
3	FAN CIRCLE WIRE	ERK.M.MUH-001
4	FAN MOTOR	M.ELK-MTR-FMT-014
5	COMPRESSOR	M.SOG-KMS-022
6	FRONT styrofoam	HAM-014
7	SIDE styrofoam	HAM-013
8	BOTTOM styrofoam	HAM-015

REFRIGERATED CABINETS-PATISSERIE COOLING

9	INSULATION UPPER STYROFOAM	HAM-016
10	MONOBLOCK PLASTIC	M.PLS-ERK-015
11	DOOR SWITCH	M.ELK-SWC-ERK-003
12	SENSE	M.ELK-LMB-DUY-004
13	LED BULB	M.ELK-LED-LMB-001
14	LOCK	M.AKS-KLT-GNL-016
15	PROP	ERK.M.ELK-EDM-DGT-012
16	THERMOSTAT	M.ELK-EDM-DGT-043
17	METAL LABEL	M.AKS-OZL-MTL-002
18	BOTTOM LEFT PLASTIC	M.PLS-ERK-021
19	TOP LEFT PLASTIC	M.PLS-ERK-031
20	ENGINE FRONT SHUTTER SHEET	YSC-ERK.1480-LZ-0053
21	BOTTOM LEFT PLASTIC	M.PLS-ERK-032
22	LOWER RIGHT PLASTIC	M.PLS-ERK-033
23	HINGE TOP PLASTIC LEFT	M.ENJ-ERK-PLS-110
24	LOCK PLASTIC	M.ENJ-ERK-PLS-131
25	HAND PLASTIC TOP	M.PLS-ERK-029
26	HINGE TOP PLASTIC RIGHT	M.ENJ-ERK-PLS-108
27	COVER RIGHT	ARA-ERK.DEPOKAPAK-430S
28	GASKET(580*1446,5)	M.CNT-ERK-052
29	ENGINE PIN	YTL-ERK.1560-CN-0002
30	SIBO	M.SOG-MUH-001
31	DRAYER	M.SOG-DRY-004
32	SHUTTER LINING SHEET	YSC-ERK.7080-LZ-0065
33	UPPER RIGHT HINGE SHEET	M.AKS-MNT-SC-001
34	PIN	M.AKS-MNT-SC-005
35	BUSH PLASTIC	M.ENJ-ERK-PLS-022
36	BOTTOM LEFT HINGE SHEET	M.AKS-MNT-SC-002
37	HINGE	M.AKS-MNT-INX-013
38	HINGE BOTTOM PLASTIC LEFT	M.ENJ-ERK-PLS-109
39	COVER LEFT	ARA-ERK.DEPOKAPAK.SOL-430S
40	HAND PLASTIC BOTTOM	M.PLS-ERK-030
41	HINGE BOTTOM PLASTIC RIGHT	M.ENJ-ERK-PLS-107
42	HINGE	M.AKS-MNT-SC-006
43	NUT	M.ENJ-ERK-PLS-024
44	PIPE	M.ENJ-ERK-PLS-002
45	CHASSIS	-
46	FOOT	ERK.M.AKS-AYK-INX-001
47	SLIDE SHEET	YSC-ERK.7095-PN-0073
48	OUTER GASKET	M.CNT-ERK-065
49	CLOSING PLASTIC	M.ENJ-ERK-PLS-132
50	INTERNAL GASKET	M.CNT-ERK-066
51	HOLDER CORNER PLASTIC	M.PLS-ERK-024
52	HOLDER CORNER PLASTIC	M.PLS-ERK-025
53	HOLDER PLASTIC	M.PLS-ERK-023
54	WING	M.ELK-HVL-FKN-004
55	FAN PLASTIC	M.PLS-ERK-016
56	EVAP POSITIVE	M.SOG-EVP-036
57	INSULATION FOAM	YIZ-ERK1480-MH-0001
58	COOLING GROUP	ARA-ERK.1480-001-AKB-S

REFRIGERATED CABINETS-PATISSERIE

H ELECTRIC CIRCUIT SCHEMA

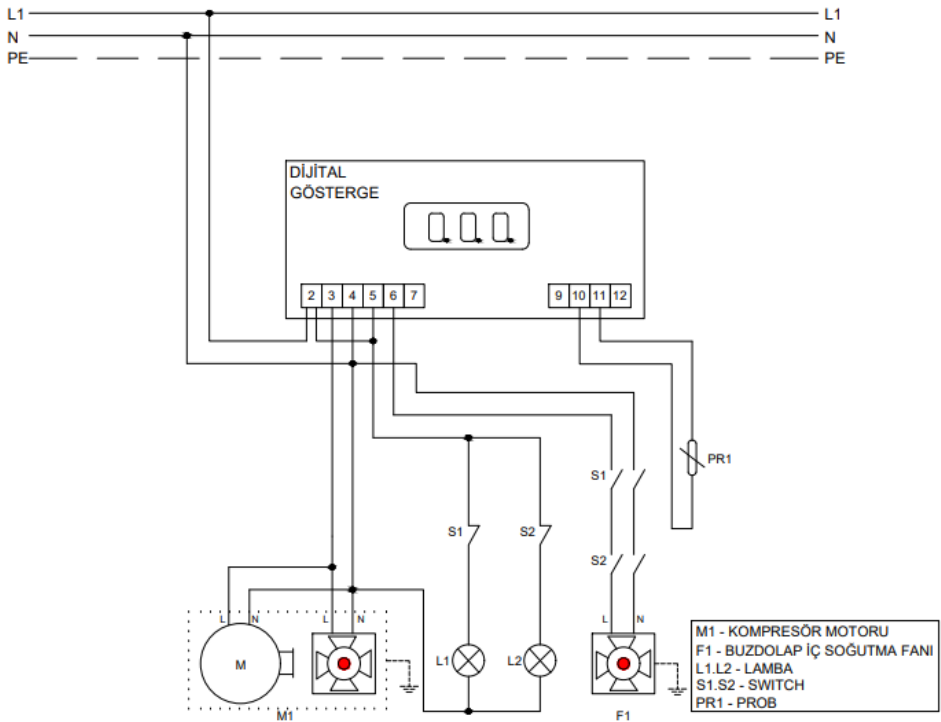


F1-REFRIGERATOR INTERNAL COOLING FAN
 L1-LAMP
 S1-SWITCH
 PR1-PROBE

EMP.70.95.01

REFRIGERATED CABINETS-PATISSERIE COOLING

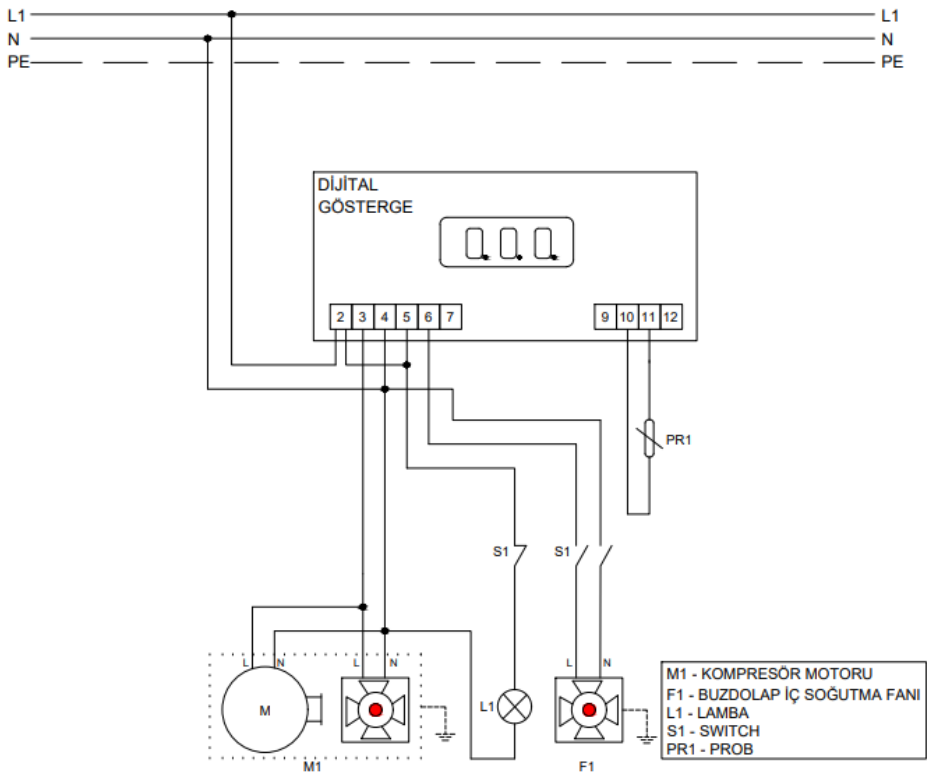
H ELECTRIC CIRCUIT SCHEMA



- M1-COMPRESSOR ENGINE
- F1-REFRIGERATOR INTERNAL COOLING FAN
- L1,L2-LAMP
- S1,S2--SWITCH
- PR1-PROBE

REFRIGERATED CABINETS-PATISSERIE

H ELECTRIC CIRCUIT SCHEMA



- M1-COMPRESSOR ENGINE
- F1-REFRIGERATOR INTERNAL COOLING FAN
- L1-LAMPA
- S1-SWITCH
- PR1-PROBE

EMP.70.95.01-40