

FREEZER COUNTERS

CONTENTS

A	GENERAL INFORMATION.....	Page 2
A1	PRODUCT DESCRIPTION	Page 3
A2	TECHNICAL INFORMATION.....	Page 3
A3	TRANSPORTATION	Page 4
A4	UNPACKING	Page 4
B	INSTALLATION	Page 4
C	SAFETY INSTRUCTIONS.....	Page 5
D	OPERATION.....	Page 6
E	CLEANING & MAINTENANCE.....	Page 7
F	TROUBLESHOOTING.....	Page 8
G	SPARE PART LIST- EXPLODING DRAWING	Page 9
H	ELECTRIC CIRCUIT SCHEMA	Page 25

A GENERAL INFORMATION

Before installing the appliance, read operation and maintenance instructions carefully. Wrong installation and part changing may damage the product or may cause injury on people. These are not in our company's responsibility to damage the appliance intentionally, negligence, detriments because of disobeying instructions and regulations, wrong connections. Unauthorized intervention to appliance invalidates the warranty.

1. This instruction manual should be kept in a safe place for future reference.
2. **Installation should be made in accordance with ordinances and security rules of that country by a qualified service personnel.**
3. This appliance has to be used by trained person.
4. Please turn off the appliance immediately in the event of malfunction or failure. The appliance should be repaired only by authorized service personnel. Please demand original spare part.

FREEZER COUNTERS

A1 PRODUCT DESCRIPTION

*The Professional Freezer Counters(Static Cooling) ,that provides high efficiency has been designed to be used in industrial kitchen.

Product Code	Dimensions (mm)	Weight (kg)	Packaging Dimensions (mm)
EMP.150.60.02	1500x600x850	95	1540x630x970
EMP.150.70.02	1500x700x850	105	1540x730x970
EMP.200.60.02	2000x600x850	120	2040x630x970
EMP.200.70.02	2000x700x850	130	2040x730x970
EMP.255.60.02	2550x600x850	145	2600x630x970
EMP.255.70.02	2550x700x850	155	2600x730x970

A2 TECHNICAL INFORMATION

Code	Capacity (Lt)	Gas Type	Gas (gr)	Power (kw)
EMP.125.60.02	175	R-290	120	0,59
EMP.125.70.02	200	R-290	120	0,59
EMP.150.60.02	250	R-290	160	0,59
EMP.150.70.02	300	R-290	160	0,59
EMP.200.60.02	400	R-290	160	0,70
EMP.200.70.02	500	R-290	160	0,70
EMP.255.60.02	550	R-290	200	0,98
EMP.255.70.02	700	R-290	200	0,98

Operating Voltage (V)	220-230
Cable (mm²)	3x1,5
Fuse (A)	25
Operating Range (°C)	-18 / -20

A3 TRANSPORTATION

*This appliance can not be moved by hand from area to area. It must be moved on pallet with forklift truck.

A4 UNPACKING

*Please unpack the package according to the security codes and ordinances of current country and get rid from the pack. Parts which contacts with food are produced by stainless steel. All plastic parts are marked by material's symbol.

*Please check that all the parts of appliance had come completely and if they are damaged or not during the shipping.

B INSTALLATION

*Please place the product to straight and sturdy ground, please take necessary steps against possibility of overturn.

*Technician who will serve for installation and service for the appliance must be professional on this subject and must have installation and service licenses by the company.

*Connection to Electric Power Supply must be done by authorized person.

*Please be sure that the voltage connected to appliance must be equal with the voltage which is on appliance's label.



This appliance must be connected to an earthed outlet in accordance with safety rules and standard.











*Appliance's earthing must be connected to earthing line on panel which is nearest to electric installation.

*Connection to the main fuse and leak current fuse must be done in accordance with the current regulations.

*If the 2 appliance will be placed adjacently, there must be at least 2 cm space between them. The Condensation is prevented .

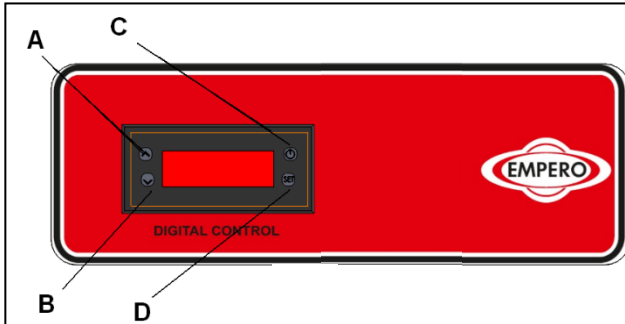
FREEZER COUNTERS

C SAFETY INSTRUCTIONS

-  *Do not use the appliance in insufficient lighted place.
-  *Do not touch the moving attachments while the appliance operates.
-  *Do not install the appliance in the presence of flammable or explosive materials.
-  *Do not operate the appliance when the machine is empty.
-  *Do not load so less or more than appliance's capacity.
-  *Do not attempt to use the appliance without suitable protective equipments.
-  *Because of any reason if there is a fire or flame flare where the appliance is used, turn off all gas valves and electric contactor switch quickly and use fire extinguisher. Never use water to extinguish the fire.
-  *All the damages because of not having earthing connection will not be on warranty.
-  *Prevent the appliance to take sunshine directly.
-  *Do not place heavy objects on to the appliance.

D OPERATION***Control Panel;**

- A** : Degree increase
B : Degree reduce
C : Indicator ON/OFF
D : SET approval button

***Operating;**

- Clean the inner and outer surface of the appliance with warm cloth before first use. Then clean with wet cloth and dry.
- Plug in the appliance.
- Activate ON/OFF button at control panel.
- Set the temperature of the appliance with up-down arrows.
- Operate the appliance for 12 hours when it is empty. at first use .Meanwhile do not open the lids.
- After inserting the products to the appliance,close the lids.
- If the lids are opened often or left opened,these situations can effect the cooling of the products.
- When the appliance is not needed to be used,switch OFF and unplug the appliance.

FREEZER COUNTERS

E CLEANING & MAINTENANCE

➤ CLEANING AND MAINTENANCE AFTER EVERY USE

- Always turn off the appliance and disconnect from the power supply before cleaning.
- Clean the control panel with dry cloth.
- Pay attention the cleaning materials to be hygienic.
- Do not use abrasive cleaning chemicals as these can leave harmful residues.
- Do not clean the appliance by spraying water directly ,otherwise electric motor may get damaged.

➤ PERIODIC CLEANING AND MAINTENANCE

- Maintenance should be done by qualified person.
- Get the periodic maintenance of the appliance once in every 15 days.
- Clean the condenser with a plastic rigid brush.
- When there is no food in the appliance, clean the inner shelves of the appliance with moist cloth and then dry.
- Make periodic maintenance of the fire-extinguisher.

F TROUBLESHOOTING

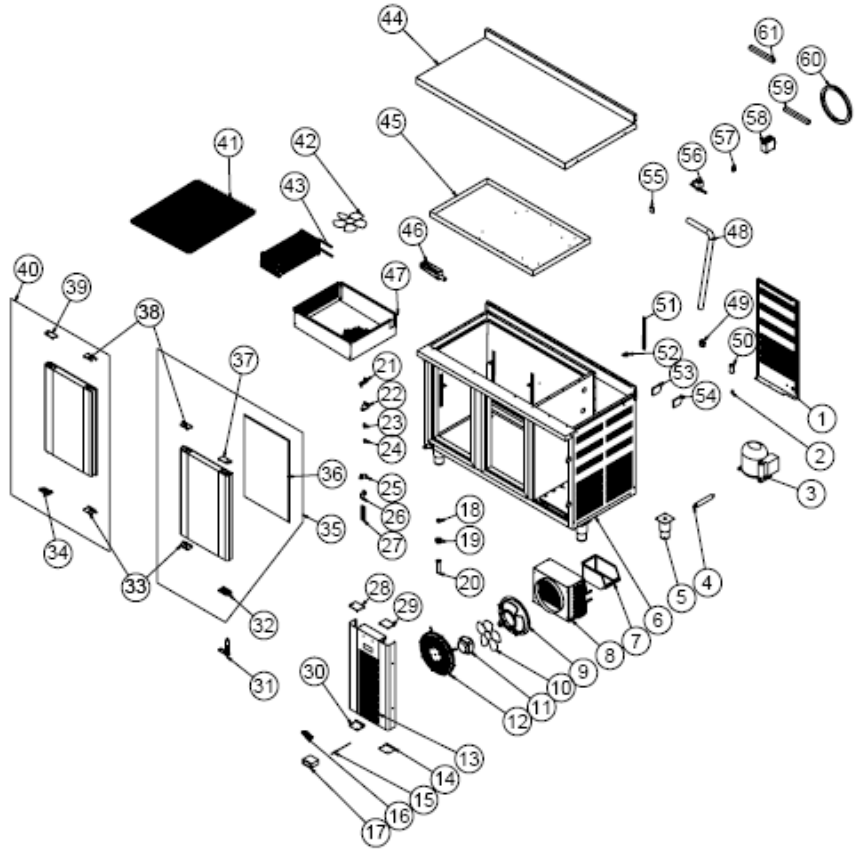
THE APPLIANCE DOESN'T OPERATE	<ol style="list-style-type: none">1. Check if the appliance is plugged in.2. Check the electrical connections and voltage.3. Check if the fuse is on or off.
THE APPLIANCE IS NOISY	<ol style="list-style-type: none">1. Check the motor.2. If the connection pipes contact with compressor,remove it.
THE APPLIANCE STOPPED	<ol style="list-style-type: none">1. The appliance can stop due to low voltage.In this situation check the voltage.2. If there is any leakage current at electric connections,the appliance stops.In this situation call the authorized service.
THE COMPRESSOR OPERATES FOR TOO LONG	<ol style="list-style-type: none">1. Cooling system may be broken.In this situation call the authorized service.

<ul style="list-style-type: none">• If cooling at freezer counters (static cooling) is not done at suitable quality• If any function of security doesn't work<ul style="list-style-type: none">➤ Do not use the appliance.

***If these problems are still going on,contact with our authorized services.**

FREEZER COUNTERS

G SPARE PART LIST- EXPLODING DRAWINGS

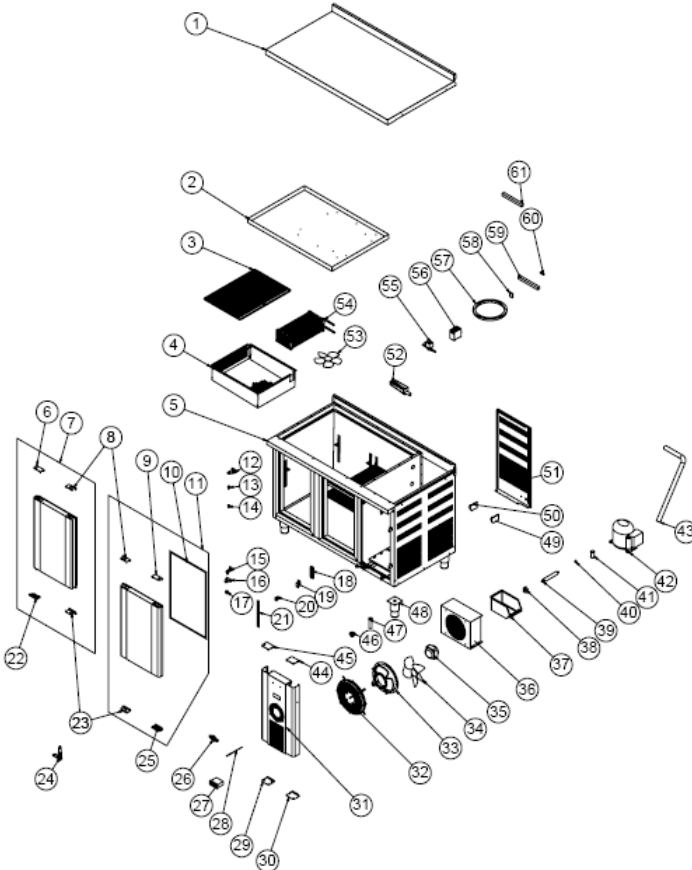


PRODUCT CODE: EMP.125.60.02		
NO	PRODUCT NAME	P.CODE
1	ENGINE BACK COVER SHEET	YSC-ERK.1570-PN-0267
2	SIBO	M.SOG-MUH-001
3	COMPRESSOR	M.SOG-KMS-037
4	DRAYER	ERK.M.SOG-DRY-001
5	FOOT	ERK.M.AKS-AYK-INX-001
6	CHASSIS	-
7	TOOLS	M.PLS-ERK-038
8	CONDENSER	M.SOG-KDS-010
9	FAN CIRCLE PLASTIC	M.ENJ-ERK-PLS-001
10	WING	M.ELK-HVL-FKN-004
11	FAN MOTOR	ERK.M.ELK-MTR-FMT-002
12	FAN CIRCLE WIRE	M.MUH-009

13	ENGINE DOOR SHEET	YSC-ERK.1570-PN-0274
14	BOTTOM LEFT PLASTIC	M.PLS-ERK-032
15	PROP	ERK.M.ELK-EDM-DGT-012
16	METAL LABEL	M.AKS-OZL-MTL-002
17	THERMOSTAT	M.ELK-EDM-DGT-039
18	MAGNET	M.MIK-SRT-ERK-001
19	NUT	M.ENJ-ERK-PLS-024
20	PIPE	M.ENJ-ERK-PLS-002
21	HINGE	M.ENJ-ERK-PLS-010
22	UPPER RIGHT HINGE SHEET	M.AKS-MNT-SC-001
23	PIN	M.AKS-MNT-SC-005
24	BUSH PLASTIC	M.ENJ-ERK-PLS-022
25	BOTTOM LEFT HINGE SHEET	M.AKS-MNT-SC-002
26	HOLDER PLASTIC	M.ENJ-ERK-PLS-009
27	PROP PLASTIC	M.ENJ-ERK-PLS-017
28	TOP PLASTIC LEFT	M.ENJ-ERK-PLS-111
29	TOP LEFT PLASTIC	M.PLS-ERK-031
30	BOTTOM PLASTIC LEFT	M.ENJ-ERK-PLS-112
31	HINGE	M.AKS-MNT-SC-007
32	HINGE BOTTOM PLASTIC RIGHT	M.ENJ-ERK-PLS-107
33	HAND PLASTIC BOTTOM	M.PLS-ERK-030
34	HINGE BOTTOM PLASTIC LEFT	M.ENJ-ERK-PLS-109
35	COVER RIGHT	ARA-ERK.BSS2-0003-ALM-430S
36	GASKET (372 - 590)	M.CNT-ERK-004
37	HINGE TOP PLASTIC RIGHT	M.ENJ-ERK-PLS-108
38	HAND PLASTIC TOP	M.PLS-ERK-029
39	HINGE TOP PLASTIC LEFT	M.ENJ-ERK-PLS-110
40	COVER LEFT	ARA-ERK.BSS2-0001-ALM-430S
41	37*42 WIRE SHELF	M.RAF-ERK-037
42	WING	M.ELK-HVL-FKN-002
43	EVAP	M.SOG-EVP-12
44	TOP TABLE SHEET	YSC-ERK.1570-PN-0269
45	UPPER PAN SHEET	YSC-ERK.1560-PN-0170
46	LEECH	M.ENJ-ERK-PLS-003
47	BENCH HOOD SHEET	YSC-ERK.1560-PN-0178
48	HOSE	HTS-HRT-001
49	HANDCUFF	M.PLS-ERK-003
50	GASKET	M.CNT-ERK-006
51	SHELF STRUT	ERK.M.MUH-002
52	SHELF NAIL	M.RAF-ERK-002
53	TERMINAL	M.ELK-KLM-013
54	TERMINAL	M.ELK-KLM-018
55	HOUSING PLASTIC	M.PLS-ERK-002
56	SELENOID VALF	ERK.M.ELK-SLN-VLF-001
57	COPPER T 3/8	M.SOG-MUH-003
58	CONTACTOR	ERK.M.ELK-KNT-KNT-021
59	RESISTANCE	ERK.M.ELK-RZS-OZL-003
60	SUPPOSITORY	M.CNT-ERK-002
61	COVER RESISTANCE	M.ELK-RZS-OZL-002

FREEZER COUNTERS

G SPARE PART LIST- EXPLODING DRAWINGS

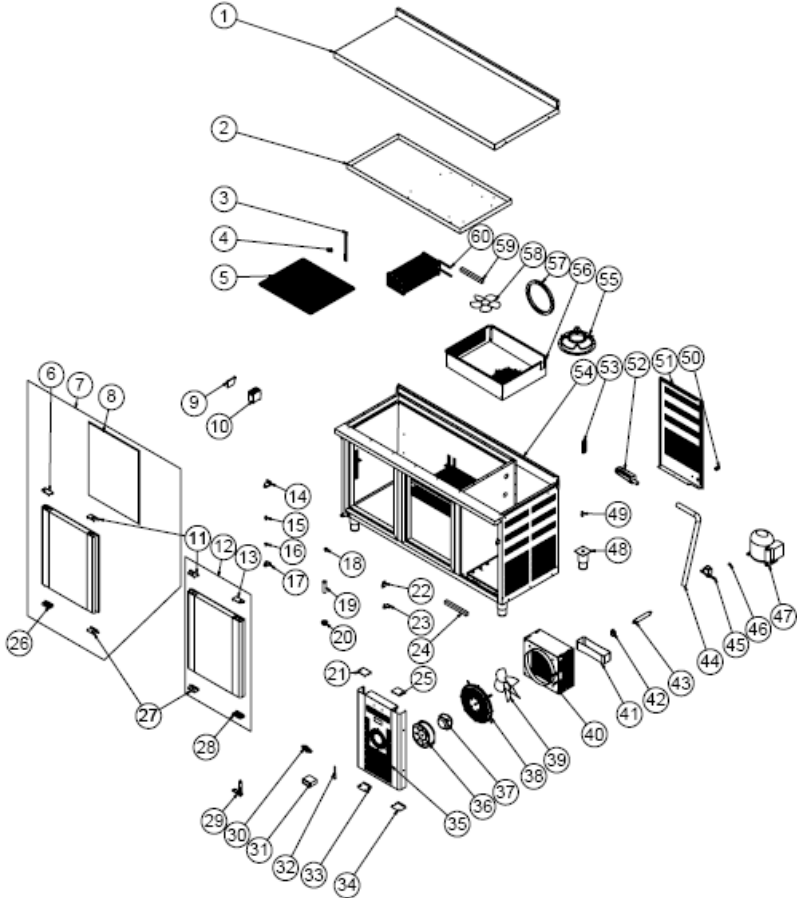


PRODUCT CODE: EMP.125.70.02		
NO	PRODUCT NAME	P.CODE
1	TOP TABLE SHEET	YSC-ERK.1570-LZ-0089
2	UPPER PAN SHEET	YSC-ERK.1570-PN-0287
3	37*42 WIRE SHELF	M.RAF-ERK-014
4	BENCH HOOD SHEET	YSC-ERK.1560-PN-0178
5	CHASSIS	-
6	HINGE TOP PLASTIC LEFT	M.ENJ-ERK-PLS-110
7	UPPER PAN SHEET	ARA-ERK.BSS2-0001-ALM-430S
8	HAND PLASTIC TOP	M.PLS-ERK-029
9	HINGE TOP PLASTIC RIGHT	M.ENJ-ERK-PLS-108
10	GASKET (372 - 590)	M.CNT-ERK-004
11	COVER RIGHT	ARA-ERK.BSS2-0003-ALM-430S

12	UPPER RIGHT HINGE SHEET	M.AKS-MNT-SC-001
13	PIN	M.AKS-MNT-SC-005
14	BUSH PLASTIC	M.ENJ-ERK-PLS-022
15	HINGE	M.ENJ-ERK-PLS-010
16	BOTTOM LEFT HINGE SHEET	M.AKS-MNT-SC-002
17	MAGNET	M.MIK-SRT-ERK-001
18	PROP PLASTIC	M.ENJ-ERK-PLS-017
19	HOLDER PLASTIC	M.ENJ-ERK-PLS-009
20	SHELF NAIL	M.RAF-ERK-002
21	SHELF STRUT	ERK.M.MUH-002
22	HINGE BOTTOM PLASTIC LEFT	M.ENJ-ERK-PLS-109
23	HAND PLASTIC BOTTOM	M.PLS-ERK-030
24	HINGE	M.AKS-MNT-SC-007
25	HINGE BOTTOM PLASTIC RIGHT	M.ENJ-ERK-PLS-107
26	METAL LABEL	M.AKS-OZL-MTL-002
27	THERMOSTAT	M.ELK-EDM-DGT-039
28	PROP	ERK.M.ELK-EDM-DGT-012
29	BOTTOM PLASTIC LEFT	M.ENJ-ERK-PLS-112
30	BOTTOM LEFT PLASTIC	M.PLS-ERK-032
31	ENGINE DOOR SHEET	YSC-ERK.1570-PN-0274
32	FAN CIRCLE WIRE	M.MUH-009
33	FAN CIRCLE PLASTIC	M.ENJ-ERK-PLS-001
34	WING	M.ELK-HVL-FKN-004
35	FAN MOTOR	ERK.M.ELK-MTR-FMT-002
36	CONDENSER	M.SOG-KDS-010
37	TOOLS	M.PLS-ERK-038
38	HANDCUFF	M.PLS-ERK-003
39	DRAYER	ERK.M.SOG-DRY-001
40	SIBO	M.SOG-MUH-001
41	GASKET	M.CNT-ERK-006
42	COMPRESSOR	M.SOG-KMS-037
43	HOSE	HTS-HRT-001
44	TOP LEFT PLASTIC	M.PLS-ERK-031
45	TOP PLASTIC LEFT	M.ENJ-ERK-PLS-111
46	NUT	M.ENJ-ERK-PLS-024
47	PIPE	M.ENJ-ERK-PLS-002
48	FOOT	ERK.M.AKS-AYK-INX-001
49	TERMINAL	M.ELK-KLM-013
50	TERMINAL	M.ELK-KLM-018
51	ENGINE BACK COVER SHEET	YSC-ERK.1570-PN-0267
52	LEECH	M.ENJ-ERK-PLS-003
53	WING	M.ELK-HVL-FKN-002
54	EVAP	M.SOG-EVP-12
55	SELENOID VALF	ERK.M.ELK-SLN-VLF-001
56	CONTACTOR	ERK.M.ELK-KNT-KNT-021
57	SUPPOSITORY	M.CNT-ERK-002
58	HOUSING PLASTIC	M.PLS-ERK-002
59	RESISTANCE	ERK.M.ELK-RZS-OZL-003
60	COPPER T 3/8	M.SOG-MUH-003
61	COVER RESISTANCE	M.ELK-RZS-OZL-002

FREEZER COUNTERS

G SPARE PART LIST- EXPLODING DRAWINGS

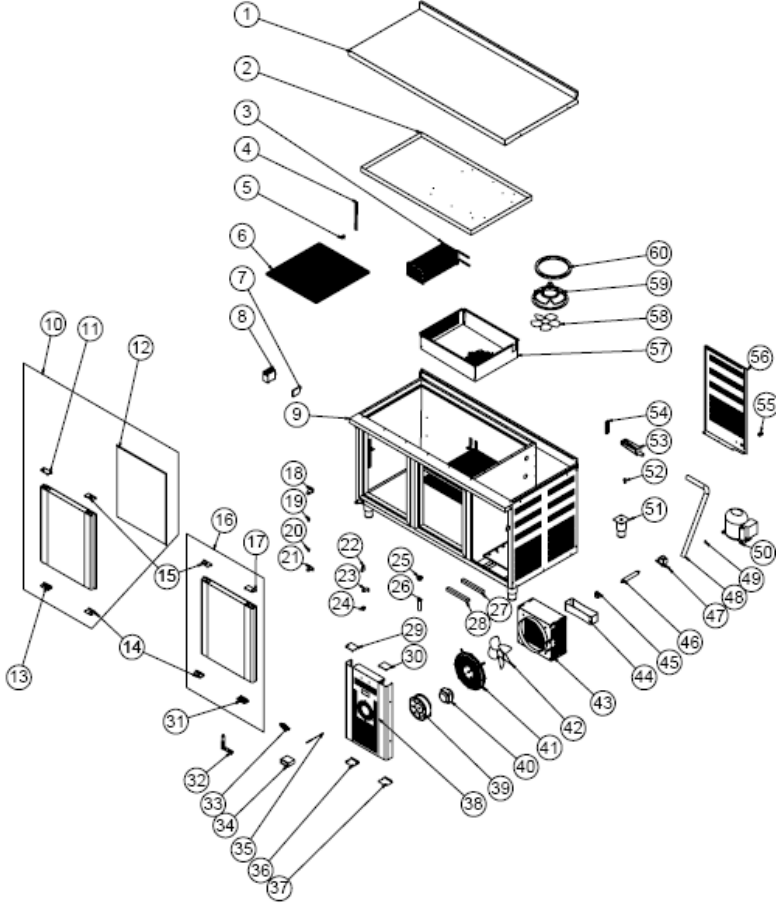


PRODUCT CODE: EMP.150.60.02		
NO	PRODUCT NAME	P.CODE
1	TOP TABLE	YSC-ERK.1560-LZ-0030
2	UPPER PAN SHEET	YSC-ERK.1560-PN-0180
3	SHELF STRUT	ERK.M.MUH-002
4	SHELF NAIL	M.RAF-ERK-002
5	42*49 SHELF	M.RAF-ERK-001
6	HINGE TOP PLASTIC LEFT	M.ENJ-ERK-PLS-110
7	COVER LEFT	ARA-ERK.1560-AKB TEZGAH KAPAK-430S
8	GASKET (590 - 472)	M.CNT-ERK-001
9	TERMINAL	M.ELK-KLM-019
10	CONTACTOR	ERK.M.ELK-KNT-KNT-021

11	HAND PLASTIC TOP	M.PLS-ERK-029
12	COVER RIGHT	ARA-ERK.1560-TEZGAH KAPAK-SAG-
13	HINGE TOP PLASTIC RIGHT	M.ENJ-ERK-PLS-108
14	UPPER RIGHT HINGE SHEET	M.AKS-MNT-SC-001
15	PIN	M.AKS-MNT-SC-005
16	BUSH PLASTIC	M.ENJ-ERK-PLS-022
17	BOTTOM LEFT HINGE SHEET	M.AKS-MNT-SC-002
18	MAGNET	M.MIK-SRT-ERK-001
19	PIPE	M.ENJ-ERK-PLS-002
20	NUT	M.ENJ-ERK-PLS-024
21	TOP PLASTIC LEFT	M.ENJ-ERK-PLS-111
22	HOLDER PLASTIC	M.ENJ-ERK-PLS-009
23	HINGE	M.ENJ-ERK-PLS-010
24	COVER RESISTANCE	M.ELK-RZS-OZL-002
25	TOP LEFT PLASTIC	M.PLS-ERK-031
26	HINGE BOTTOM PLASTIC LEFT	M.ENJ-ERK-PLS-109
27	HAND PLASTIC BOTTOM	M.PLS-ERK-030
28	HINGE BOTTOM PLASTIC RIGHT	M.ENJ-ERK-PLS-107
29	HINGE	M.AKS-MNT-SC-007
30	METAL LABEL	M.AKS-OZL-MTL-002
31	THERMOSTAT	M.ELK-EDM-DGT-039
32	PROP	ERK.M.ELK-EDM-DGT-012
33	BOTTOM PLASTIC LEFT	M.ENJ-ERK-PLS-112
34	BOTTOM LEFT PLASTIC	M.PLS-ERK-032
35	ENGINE DOOR SHEET	YSC-ERK.1560-PN-0128
36	FAN	ERK.M.ELK-HVL-KFN-001
37	FAN MOTOR	M.ELK-MTR-FMT-014
38	FAN CIRCLE WIRE	ERK.M.MUH-001
39	WING	M.ELK-HVL-KFN-002
40	CONDENSER POSITIVE (+)	M.SOG-KDS-032
41	TOOLS	M.PLS-ERK-038
42	HANDCUFF	M.PLS-ERK-007
43	DRAYER	ERK.M.SOG-DRY-001
44	HOSE	HTS-HRT-001
45	SELENOİD VALF	ERK.M.ELK-SLN-VLF-001
46	SİBO	M.SOG-MUH-001
47	COMPRESSOR	M.SOG-KMS-037
48	FOOT	ERK.M.AKS-AYK-INX-001
49	COPPER T 3/8	M.SOG-MUH-003
50	CABLE GLAND	ERK.M.ELK-RKR-PLS-003
51	ENGINE BACK COVER SHEET	YSC-ERK.1560-PN-0122
52	LEECH	M.ENJ-ERK-PLS-003
53	PROP PLASTIC	M.ENJ-ERK-PLS-017
54	CHASSIS	-
55	FAN CIRCLE PLASTIC	M.ENJ-ERK-PLS-001
56	BENCH HOOD SHEET	YSC-ERK.1560-PN-0178
57	SUPPOSITORY	M.CNT-ERK-002
58	WING	M.ELK-HVL-KFN-004
59	RESISTANCE	ERK.M.ELK-RZS-OZL-003
60	EVAP	M.SOG-EVP-12

FREEZER COUNTERS

G SPARE PART LIST- EXPLODING DRAWINGS

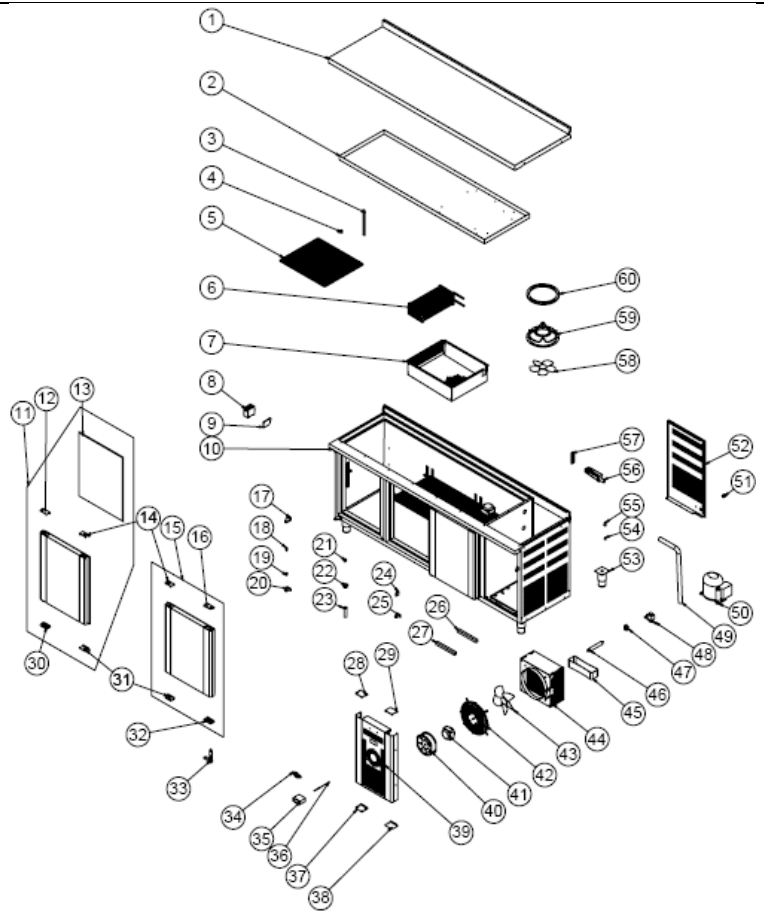


PRODUCT CODE: EMP.150.70.02		
NO	PRODUCT NAME	P.CODE
1	TOP TABLE SHEET	YSC-ERK.1570-LZ-0040
2	UPPER PAN SHEET	YSC-ERK.1570-PN-0293
3	EVAP	M.SOG-EVP-12
4	SHELF STRUT	ERK.M.MUH-002
5	SHELF NAIL	M.RAF-ERK-002
6	49*52 SHELF	M.RAF-ERK-003
7	TERMINAL	M.ELK-KLM-019
8	CONTACTOR	ERK.M.ELK-KNT-KNT-021
9	CHASSIS	-
10	COVER LEFT	ARA-ERK.1560-AKB TEZGAH KAPAK-

11	HINGE TOP PLASTIC LEFT	M.ENJ-ERK-PLS-110
12	GASKET (590 - 472)	M.CNT-ERK-001
13	HINGE BOTTOM PLASTIC LEFT	M.ENJ-ERK-PLS-109
14	HAND PLASTIC BOTTOM	M.PLS-ERK-030
15	HAND PLASTIC TOP	M.PLS-ERK-029
16	COVER RIGHT	ARA-ERK.1560-TEZGAH KAPAK-SAG-
17	HINGE TOP PLASTIC RIGHT	M.ENJ-ERK-PLS-108
18	UPPER RIGHT HINGE SHEET	M.AKS-MNT-SC-001
19	PIN	M.AKS-MNT-SC-005
20	BUSH PLASTIC	M.ENJ-ERK-PLS-022
21	BOTTOM LEFT HINGE SHEET	M.AKS-MNT-SC-002
22	HOLDER PLASTIC	M.ENJ-ERK-PLS-009
23	HINGE	M.ENJ-ERK-PLS-010
24	MAGNET	M.MIK-SRT-ERK-001
25	NUT	M.ENJ-ERK-PLS-024
26	PIPE	M.ENJ-ERK-PLS-002
27	COVER RESISTANCE	M.ELK-RZS-OZL-002
28	RESISTANCE	ERK.M.ELK-RZS-OZL-003
29	TOP PLASTIC LEFT	M.ENJ-ERK-PLS-111
30	TOP LEFT PLASTIC	M.PLS-ERK-031
31	HINGE BOTTOM PLASTIC RIGHT	M.ENJ-ERK-PLS-107
32	HINGE	M.AKS-MNT-SC-007
33	METAL LABEL	M.AKS-OZL-MTL-002
34	THERMOSTAT	M.ELK-EDM-DGT-039
35	PROP	ERK.M.ELK-EDM-DGT-012
36	BOTTOM PLASTIC LEFT	M.ENJ-ERK-PLS-112
37	BOTTOM LEFT PLASTIC	M.PLS-ERK-032
38	ENGINE DOOR SHEET	YSC-ERK.1560-PN-0128
39	FAN	ERK.M.ELK-HVL-KFN-001
40	FAN MOTOR	M.ELK-MTR-FMT-014
41	FAN CIRCLE WIRE	ERK.M.MUH-001
42	WING	M.ELK-HVL-FKN-002
43	CONDENSER POSITIVE (+)	M.SOG-KDS-032
44	TOOLS	M.PLS-ERK-038
45	HANDCUFF	M.PLS-ERK-007
46	DRAYER	ERK.M.SOG-DRY-001
47	SELENOID VALF	ERK.M.ELK-SLN-VLF-001
48	HOSE	HTS-HRT-001
49	SIBO	M.SOG-MUH-001
50	COMPRESSOR	M.SOG-KMS-037
51	FOOT	ERK.M.AKS-AYK-INX-001
52	COPPER T 3/8	M.SOG-MUH-003
53	LEECH	M.ENJ-ERK-PLS-003
54	PROP PLASTIC	M.ENJ-ERK-PLS-017
55	CABLE GLAND	ERK.M.ELK-RKR-PLS-003
56	ENGINE BACK COVER SHEET	YSC-ERK.1560-PN-0122
57	BENCH HOOD SHEET	YSC-ERK.1560-PN-0178
58	WING	M.ELK-HVL-FKN-004
59	FAN CIRCLE PLASTIC	M.ENJ-ERK-PLS-001
60	SUPPOSITORY	M.CNT-ERK-002

FREEZER COUNTERS

G SPARE PART LIST- EXPLODING DRAWINGS

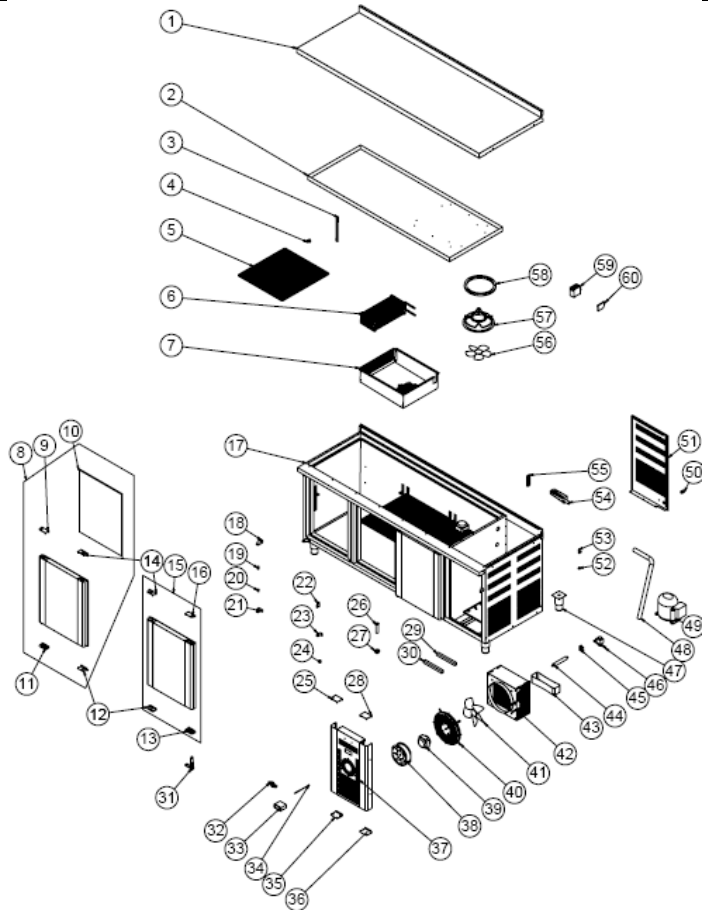


PRODUCT CODE: EMP.200.60.02		
NO	PRODUCT NAME	P.CODE
1	TOP TABLE	YSC-ERK.2060-LZ-0007
2	UPPER PAN SHEET	YSC-ERK.2060-PN-0095
3	SHELF STRUT	ERK.M.MUH-002
4	SHELF NAIL	M.RAF-ERK-002
5	42*49 SHELF	M.RAF-ERK-001
6	EVAP	M.SOG-EVP-12
7	BENCH HOOD SHEET	YSC-ERK.1560-PN-0178
8	CONTACTOR	ERK.M.ELK-KNT-KNT-021
9	TERMINAL	M.ELK-KLM-019
10	CHASSIS	-

11	COVER LEFT	ARA-ERK.1560-AKB TEZGAH
12	HINGE TOP PLASTIC LEFT	M.ENJ-ERK-PLS-110
13	GASKET (590 - 472)	M.CNT-ERK-001
14	HAND PLASTIC TOP	M.PLS-ERK-029
15	COVER RIGHT	ARA-ERK.1560-TEZGAH KAPAK-
16	HINGE TOP PLASTIC RIGHT	M.ENJ-ERK-PLS-108
17	UPPER RIGHT HINGE SHEET	M.AKS-MNT-SC-001
18	PIN	M.AKS-MNT-SC-005
19	BUSH PLASTIC	M.ENJ-ERK-PLS-022
20	BOTTOM LEFT HINGE SHEET	M.AKS-MNT-SC-002
21	MAGNET	M.MIK-SRT-ERK-001
22	NUT	M.ENJ-ERK-PLS-024
23	PIPE	M.ENJ-ERK-PLS-002
24	HOLDER PLASTIC	M.ENJ-ERK-PLS-009
25	HINGE	M.ENJ-ERK-PLS-010
26	COVER RESISTANCE	M.ELK-RZS-OZL-002
27	RESISTANCE	ERK.M.ELK-RZS-OZL-003
28	TOP PLASTIC LEFT	M.ENJ-ERK-PLS-111
29	TOP LEFT PLASTIC	M.PLS-ERK-031
30	HINGE BOTTOM PLASTIC LEFT	M.ENJ-ERK-PLS-109
31	HAND PLASTIC BOTTOM	M.PLS-ERK-030
32	HINGE BOTTOM PLASTIC RIGHT	M.ENJ-ERK-PLS-107
33	HINGE	M.AKS-MNT-SC-007
34	METAL LABEL	M.AKS-OZL-MTL-002
35	THERMOSTAT	M.ELK-EDM-DGT-039
36	PROP	ERK.M.ELK-EDM-DGT-012
37	BOTTOM PLASTIC LEFT	M.ENJ-ERK-PLS-112
38	BOTTOM LEFT PLASTIC	M.PLS-ERK-032
39	ENGINE DOOR SHEET	YSC-ERK.1560-PN-0128
40	FAN	ERK.M.ELK-HVL-KFN-001
41	FAN MOTOR	M.ELK-MTR-FMT-014
42	FAN CIRCLE WIRE	ERK.M.MUH-001
43	WING	M.ELK-HVL-FKN-002
44	CONDENSER POSITIVE (+)	M.SOG-KDS-032
45	TOOLS	M.PLS-ERK-038
46	DRAYER	ERK.M.SOG-DRY-001
47	HANDCUFF	M.PLS-ERK-007
48	SELENOİD VALF	ERK.M.ELK-SLN-VLF-001
49	HOSE	HTS-HRT-001
50	COMPRESSOR	M.SOG-KMS-037
51	CABLE GLAND	ERK.M.ELK-RKR-PLS-003
52	ENGINE BACK COVER SHEET	YSC-ERK.1560-PN-0122
53	FOOT	ERK.M.AKS-AYK-INX-001
54	SİBO	M.SOG-MUH-001
55	COPPER T 3/8	M.SOG-MUH-003
56	LEECH	M.ENJ-ERK-PLS-003
57	PROP PLASTIC	M.ENJ-ERK-PLS-017
58	WING	M.ELK-HVL-FKN-004
59	FAN CIRCLE PLASTIC	M.ENJ-ERK-PLS-001
60	SUPPOSITORY	M.CNT-ERK-002

FREEZER COUNTERS

G SPARE PART LIST- EXPLODING DRAWINGS

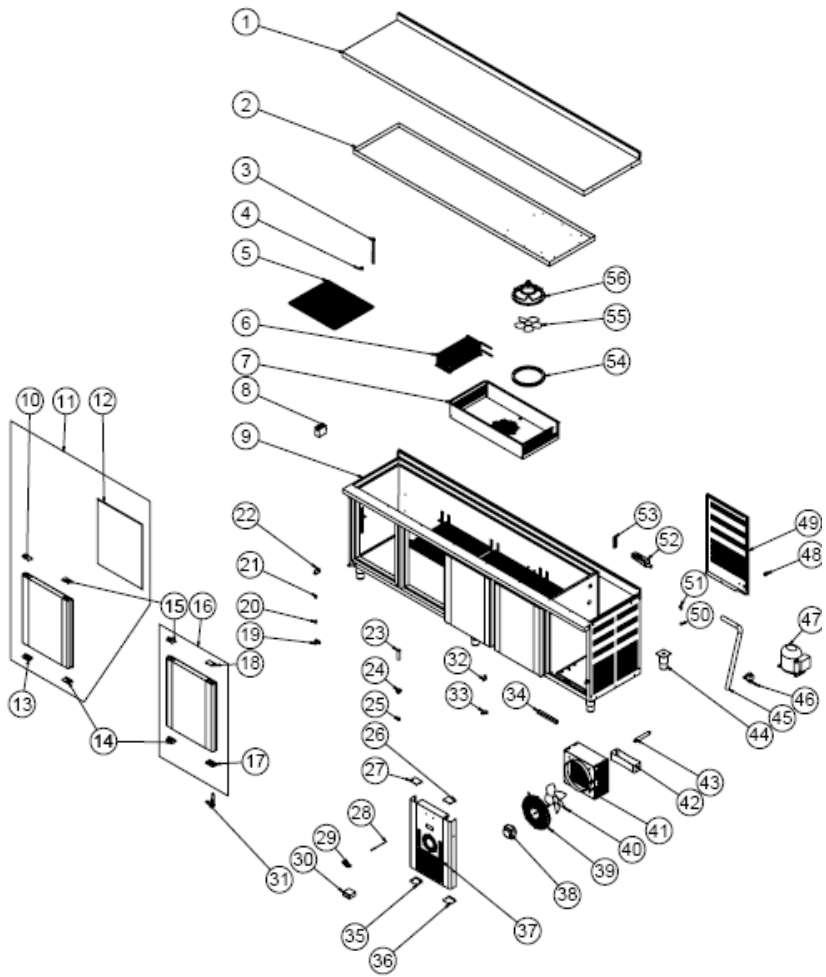


PRODUCT CODE: EMP.200.70.02		
NO	PRODUCT NAME	P.CODE
1	TOP TABLE SHEET	YSC-ERK.2070-LZ-0026
2	UPPER PAN SHEET	YSC-ERK.2070-PN-0131
3	SHELF STRUT	ERK.M.MUH-002
4	SHELF NAIL	M.RAF-ERK-002
5	49*52 SHELF	M.RAF-ERK-003
6	EVAP	M.SOG-EVP-12
7	BENCH HOOD SHEET	YSC-ERK.1560-PN-0178
8	COVER LEFT	ARA-ERK.1560-AKB TEZGAH
9	HINGE TOP PLASTIC LEFT	M.ENJ-ERK-PLS-110
10	GASKET (590 - 472)	M.CNT-ERK-001

11	HINGE BOTTOM PLASTIC LEFT	M.ENJ-ERK-PLS-109
12	HAND PLASTIC BOTTOM	M.PLS-ERK-030
13	HINGE BOTTOM PLASTIC RIGHT	M.ENJ-ERK-PLS-107
14	HAND PLASTIC TOP	M.PLS-ERK-029
15	COVER RIGHT	ARA-ERK.1560-TEZGAH KAPAK-
16	HINGE TOP PLASTIC RIGHT	M.ENJ-ERK-PLS-108
17	CHASSIS	-
18	UPPER RIGHT HINGE SHEET	M.AKS-MNT-SC-001
19	PIN	M.AKS-MNT-SC-005
20	BUSH PLASTIC	M.ENJ-ERK-PLS-022
21	BOTTOM LEFT HINGE SHEET	M.AKS-MNT-SC-002
22	HOLDER PLASTIC	M.ENJ-ERK-PLS-009
23	HINGE	M.ENJ-ERK-PLS-010
24	MAGNET	M.MIK-SRT-ERK-001
25	TOP PLASTIC LEFT	M.ENJ-ERK-PLS-111
26	PIPE	M.ENJ-ERK-PLS-002
27	NUT	M.ENJ-ERK-PLS-024
28	TOP LEFT PLASTIC	M.PLS-ERK-031
29	COVER RESISTANCE	M.ELK-RZS-OZL-002
30	RESISTANCE	ERK.M.ELK-RZS-OZL-003
31	HINGE	M.AKS-MNT-SC-007
32	METAL LABEL	M.AKS-OZL-MTL-002
33	THERMOSTAT	M.ELK-EDM-DGT-039
34	PROP	ERK.M.ELK-EDM-DGT-012
35	BOTTOM PLASTIC LEFT	M.ENJ-ERK-PLS-112
36	BOTTOM LEFT PLASTIC	M.PLS-ERK-032
37	ENGINE DOOR SHEET	YSC-ERK.1560-PN-0128
38	FAN	ERK.M.ELK-HVL-KFN-001
39	FAN MOTOR	M.ELK-MTR-FMT-014
40	FAN CIRCLE WIRE	ERK.M.MUH-001
41	WING	M.ELK-HVL-FKN-002
42	CONDENSER POSITIVE (+)	M.SOG-KDS-032
43	TOOLS	M.PLS-ERK-038
44	DRAYER	ERK.M.SOG-DRY-001
45	HANDCUFF	M.PLS-ERK-007
46	SELENOİD VALF	ERK.M.ELK-SLN-VLF-001
47	FOOT	ERK.M.AKS-AYK-INX-001
48	HOSE	HTS-HRT-001
49	COMPRESSOR	M.SOG-KMS-037
50	CABLE GLAND	ERK.M.ELK-RKR-PLS-003
51	ENGINE BACK COVER SHEET	YSC-ERK.1560-PN-0122
52	SİBO	M.SOG-MUH-001
53	COPPER T 3/8	M.SOG-MUH-003
54	LEECH	M.ENJ-ERK-PLS-003
55	PROP PLASTIC	M.ENJ-ERK-PLS-017
56	WING	M.ELK-HVL-FKN-004
57	FAN CIRCLE PLASTIC	M.ENJ-ERK-PLS-001
58	SUPPOSITORY	M.CNT-ERK-002
59	CONTACTOR	ERK.M.ELK-KNT-KNT-021
60	TERMINAL	M.ELK-KLM-019

FREEZER COUNTERS

G SPARE PART LIST- EXPLODING DRAWINGS

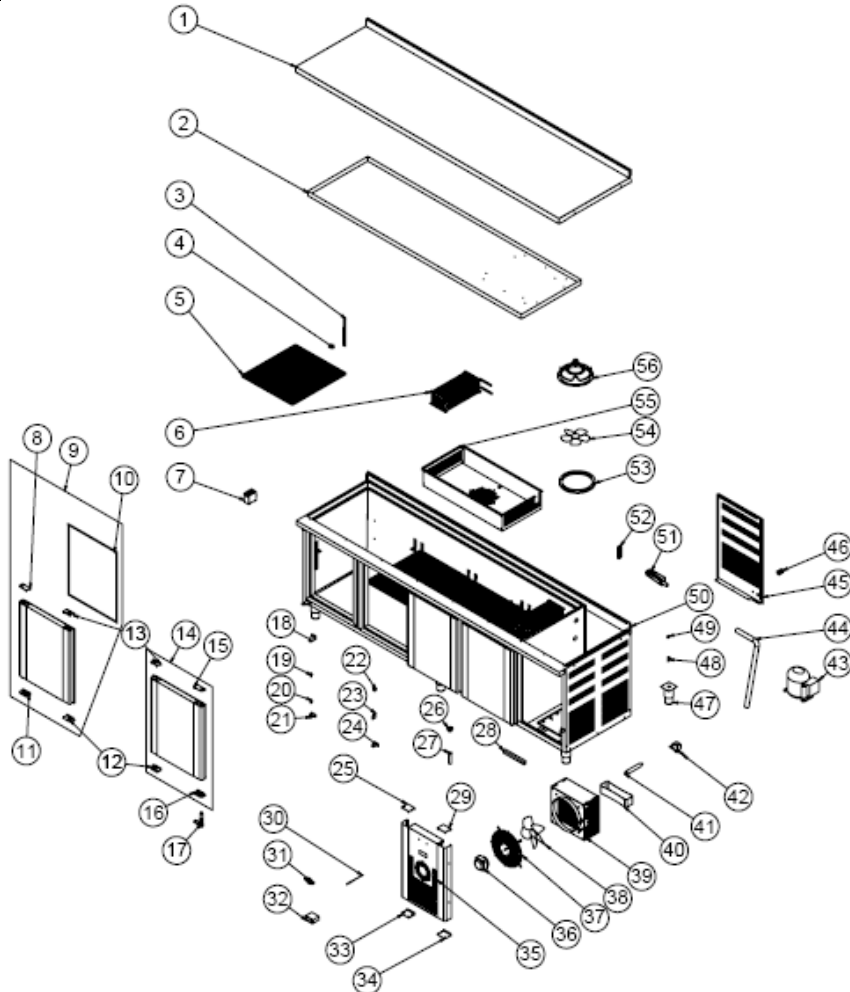


PRODUCT CODE: EMP.255.60.02		
NO	PRODUCT NAME	P.CODE
1	TOP TABLE	YSC-ERK.2560-LZ-0017
2	UPPER PAN SHEET	YSC-ERK.2560-PN-0090
3	SHELF STRUT	ERK.M.MUH-002
4	SHELF NAIL	M.RAF-ERK-002
5	42*49 SHELF	M.RAF-ERK-001
6	EVAP	M.SOG-EVP-12
7	HOOD SHEET	YSC-ERK.2560-PN-0091

8	CONTACTOR	ERK.M.ELK-KNT-KNT-021
9	CHASSIS	-
10	HINGE TOP PLASTIC LEFT	M.ENJ-ERK-PLS-110
11	COVER LEFT	ARA-ERK.1560-AKB TEZGAH
12	GASKET (590 - 472)	M.CNT-ERK-001
13	HINGE BOTTOM PLASTIC LEFT	M.ENJ-ERK-PLS-109
14	HAND PLASTIC BOTTOM	M.PLS-ERK-030
15	HAND PLASTIC TOP	M.PLS-ERK-029
16	COVER RIGHT	ARA-ERK.1560-TEZGAH KAPAK-
17	HINGE BOTTOM PLASTIC RIGHT	M.ENJ-ERK-PLS-107
18	HINGE TOP PLASTIC RIGHT	M.ENJ-ERK-PLS-108
19	BOTTOM LEFT HINGE SHEET	M.AKS-MNT-SC-002
20	BUSH PLASTIC	M.ENJ-ERK-PLS-022
21	PIN	M.AKS-MNT-SC-005
22	UPPER RIGHT HINGE SHEET	M.AKS-MNT-SC-001
23	PIPE	M.ENJ-ERK-PLS-002
24	NUT	M.ENJ-ERK-PLS-024
25	MAGNET	M.MIK-SRT-ERK-001
26	TOP LEFT PLASTIC	M.PLS-ERK-031
27	TOP PLASTIC LEFT	M.ENJ-ERK-PLS-111
28	PROP	ERK.M.ELK-EDM-DGT-012
29	METAL LABEL	M.AKS-OZL-MTL-002
30	THERMOSTAT	M.ELK-EDM-DGT-039
31	HINGE	M.AKS-MNT-SC-007
32	HOLDER PLASTIC	M.ENJ-ERK-PLS-009
33	HINGE	M.ENJ-ERK-PLS-010
34	COVER RESISTANCE	M.ELK-RZS-OZL-002
35	BOTTOM PLASTIC LEFT	M.ENJ-ERK-PLS-112
36	BOTTOM LEFT PLASTIC	M.PLS-ERK-032
37	ENGINE DOOR SHEET	YSC-ERK.2560-PN-0066
38	FAN MOTOR	ERK.M.ELK-MTR-FMT-002
39	FAN CIRCLE WIRE	ERK.M.MUH-001
40	FAN WING	M.ELK-HVL-FKN-001
41	CONDENSER	M.SOG-KDS-014
42	TOOLS	M.PLS-ERK-038
43	DRAYER	ERK.M.SOG-DRY-001
44	FOOT	ERK.M.AKS-AYK-INX-001
45	HOSE	HTS-HRT-001
46	SELENOİD VALF	ERK.M.ELK-SLN-VLF-001
47	COMPRESSOR	M.SOG-KMS-024
48	CABLE GLAND	ERK.M.ELK-RKR-PLS-003
49	ENGINE BACK COVER SHEET	YSC-ERK.2560-PN-0068
50	SİBO	M.SOG-MUH-001
51	COPPER T 3/8	M.SOG-MUH-003
52	LEECH	M.ENJ-ERK-PLS-003
53	PROP PLASTIC	M.ENJ-ERK-PLS-017
54	SUPPOSITORY	M.CNT-ERK-002
55	WING	M.ELK-HVL-FKN-002
56	FAN CIRCLE PLASTIC	M.ENJ-ERK-PLS-001

FREEZER COUNTERS

G SPARE PART LIST- EXPLODING DRAWINGS



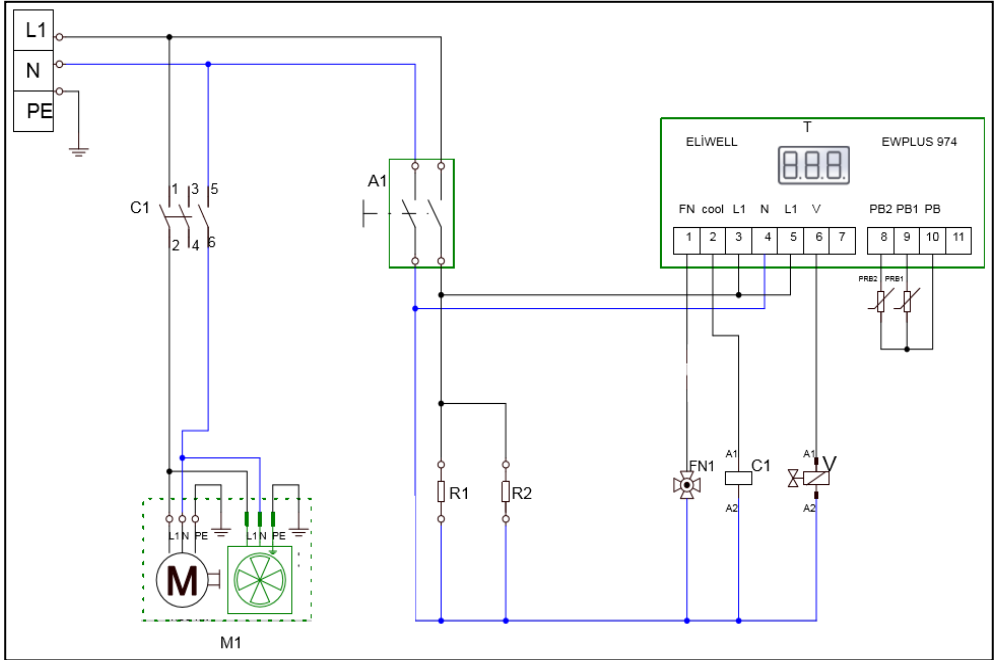
PRODUCT CODE: EMP.255.70.02

NO	PRODUCT NAME	P.CODE
1	TOP TABLE SHEET	YSC-ERK.2570-LZ-0007
2	UPPER PAN SHEET	YSC-ERK.2570-PN-0045
3	SHELF STRUT	ERK.M.MUH-002
4	SHELF NAIL	M.RAF-ERK-002
5	49*52 SHELF	M.RAF-ERK-003
6	EVAP	M.SOG-EVP-12

7	CONTACTOR	ERK.M.ELK-KNT-KNT-021
8	HINGE TOP PLASTIC LEFT	M.ENJ-ERK-PLS-110
9	COVER LEFT	ARA-ERK.1560-AKB TEZGAH
10	GASKET (590 - 472)	M.CNT-ERK-001
11	HINGE BOTTOM PLASTIC LEFT	M.ENJ-ERK-PLS-109
12	HAND PLASTIC BOTTOM	M.PLS-ERK-030
13	HAND PLASTIC TOP	M.PLS-ERK-029
14	COVER RIGHT	ARA-ERK.1560-TEZGAH KAPAK-
15	HINGE TOP PLASTIC RIGHT	M.ENJ-ERK-PLS-108
16	HINGE BOTTOM PLASTIC RIGHT	M.ENJ-ERK-PLS-107
17	HINGE	M.AKS-MNT-SC-007
18	UPPER RIGHT HINGE SHEET	M.AKS-MNT-SC-001
19	PIN	M.AKS-MNT-SC-005
20	BUSH PLASTIC	M.ENJ-ERK-PLS-022
21	BOTTOM LEFT HINGE SHEET	M.AKS-MNT-SC-002
22	MAGNET	M.MIK-SRT-ERK-001
23	HOLDER PLASTIC	M.ENJ-ERK-PLS-009
24	HINGE	M.ENJ-ERK-PLS-010
25	TOP PLASTIC LEFT	M.ENJ-ERK-PLS-111
26	NUT	M.ENJ-ERK-PLS-024
27	PIPE	M.ENJ-ERK-PLS-002
28	COVER RESISTANCE	M.ELK-RZS-OZL-002
29	TOP LEFT PLASTIC	M.PLS-ERK-031
30	PROP	ERK.M.ELK-EDM-DGT-012
31	METAL LABEL	M.AKS-OZL-MTL-002
32	THERMOSTAT	M.ELK-EDM-DGT-039
33	BOTTOM PLASTIC LEFT	M.ENJ-ERK-PLS-112
34	BOTTOM LEFT PLASTIC	M.PLS-ERK-032
35	ENGINE DOOR SHEET	YSC-ERK.2560-PN-0066
36	FAN MOTOR	ERK.M.ELK-MTR-FMT-002
37	FAN CIRCLE WIRE	ERK.M.MUH-001
38	FAN WING	M.ELK-HVL-FKN-001
39	CONDENSER	M.SOG-KDS-014
40	TOOLS	M.PLS-ERK-038
41	DRAYER	ERK.M.SOG-DRY-001
42	SELENOİD VALF	ERK.M.ELK-SLN-VLF-001
43	COMPRESSOR	M.SOG-KMS-024
44	HOSE	HTS-HRT-001
45	ENGINE BACK COVER SHEET	YSC-ERK.2560-PN-0068
46	CABLE GLAND	ERK.M.ELK-RKR-PLS-003
47	FOOT	ERK.M.AKS-AYK-INX-001
48	COPPER T 3/8	M.SOG-MUH-003
49	SİBO	M.SOG-MUH-001
50	CHASSIS	-
51	LEECH	M.ENJ-ERK-PLS-003
52	PROP PLASTIC	M.ENJ-ERK-PLS-017
53	SUPPOSITORY	M.CNT-ERK-002
54	WING	M.ELK-HVL-FKN-002
55	HOOD SHEET	YSC-ERK.2560-PN-0091
56	FAN CIRCLE PLASTIC	M.ENJ-ERK-PLS-001

FREEZER COUNTERS

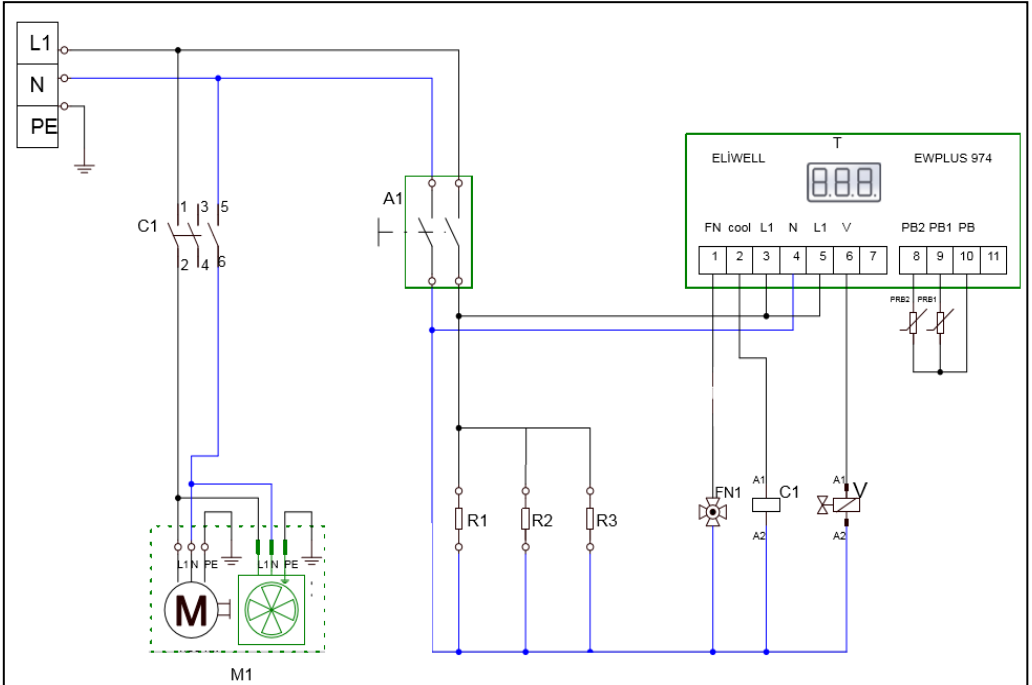
H ELECTRIC CIRCUIT SCHEMA



EMP.150.60-70.02

I	A1	T	M1	R1-R2	V
Terminal	Large lighted 0-1 switch	Digital Indicator	Compressor and condenser fan	Door resistance 200W 220V	Valve

H ELECTRIC CIRCUIT SCHEMA

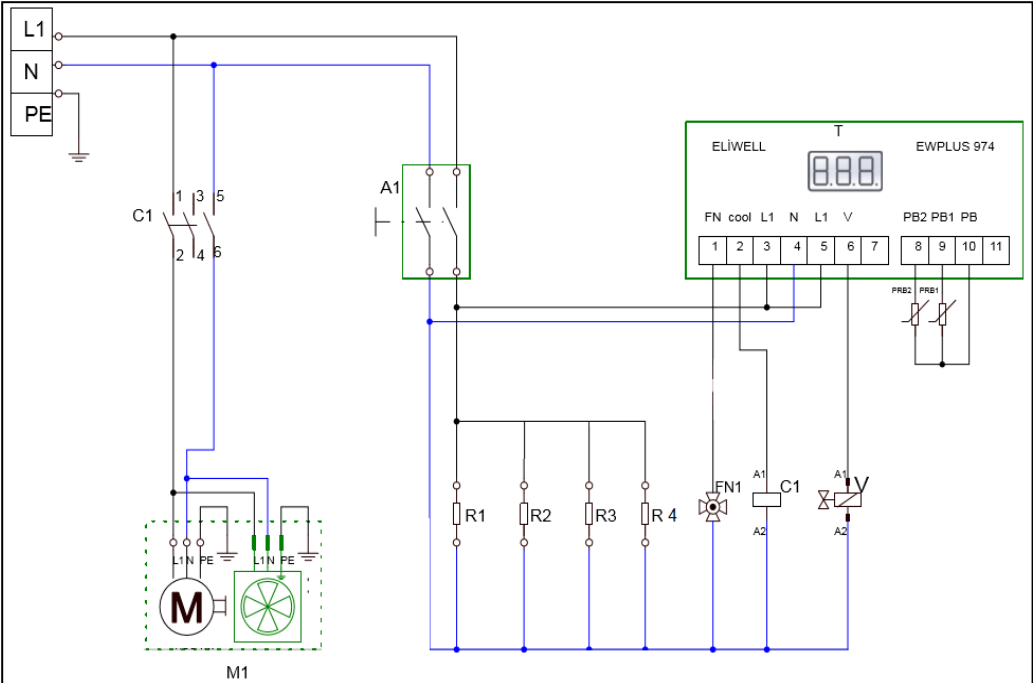


EMP.200.60-70.02

I	A1	T	M1	R1-R2-R3	V
Terminal	Large lighted 0-1 switch	Digital Indicator	Compressor and condenser fan	Door resistance 200W 220V	Valve

FREEZER COUNTERS

H ELECTRIC CIRCUIT SCHEMA



EMP.255.60-70.02

I	A1	T	M1	R1-R2-R3-R4	V
Terminal	Large lighted 0-1 switch	Digital Indicator	Compressor and condenser fan	Door resistance 200W 220V	Valve