

GLASS DOOR REFRIGERATED COUNTERS

CONTENTS

A	GENERAL INFORMATION	Page 2
A1	PRODUCT DESCRIPTION	Page 3
A2	TECHNICAL INFORMATION	Page 3
A3	TRANSPORTATION.....	Page 4
A4	UNPACKING	Page 4
B	INSTALLATION	Page 4
C	SAFETY INSTRUCTIONS.....	Page 5
D	OPERATION	Page 6
E	CLEANING & MAINTENANCE.....	Page 7
F	TROUBLESHOOTING	Page 8
G	SPARE PART LIST- EXPLODING DRAWING	Page 9
H	ELECTRIC CIRCUIT SCHEMA	Page 21

A GENERAL INFORMATION

Before installing the appliance, read operation and maintenance instructions carefully. Wrong installation and part changing may damage the product or may cause injury on people. These are not in our company's responsibility to damage the appliance intentionally, negligence, detriments because of disobeying instructions and regulations, wrong connections. Unauthorized intervention to appliance invalidates the warranty.

1. This instruction manual should be kept in a safe place for future reference.
2. **Installation should be made in accordance with ordinances and security rules of that country by a qualified service personnel.**
3. This appliance has to be used by trained person.
4. Please turn off the appliance immediately in the event of malfunction or failure. The appliance should be repaired only by authorized service personnel. Please demand original spare part.

GLASS DOOR REFRIGERATED COUNTERS

A1 PRODUCT DESCRIPTION

*The Professional Glass Door Refrigerated Counters, that provides high efficiency has been designed to be used in industrial kitchen.

Product Code	Dimensions (mm)	Weight (kg)	Packaging Dimensions (mm)
EMP.150.60.03	1500x600x850	112	1540x630x970
EMP.150.70.03	1500x700x850	120	1540x730x970
EMP.200.60.03	2000x600x850	140	2040x630x970
EMP.200.70.03	2000x700x850	148	2040x730x970
EMP.255.60.03	2550x600x850	183	2600x630x970
EMP.255.70.03	2550x700x850	193	2600x730x970

A2 TECHNICAL INFORMATION

Product Code	Capacity (Lt)	Gas type	Gas (gr)	Power (kw)
EMP.150.60.01	250	R-290	130	0,4
EMP.150.70.01	300	R-290	130	0,4
EMP.200.60.01	400	R-290	140	0,4
EMP.200.70.01	500	R-290	140	0,4
EMP.255.60.01	550	R-290	150	0,4
EMP.255.70.01	700	R-290	150	0,4

Operating Voltage (V)	220-230
Cable (mm ²)	3x1,5
Fuse (A)	25
Operating Range (°C)	+0 / +5

A3 TRANSPORTATION

*This appliance can not be moved by hand from area to area. It must be moved on pallet with forklift truck.

A4 UNPACKING

*Please unpack the package according to the security codes and ordinances of current country and get rid from the pack. Parts which contacts with food are produced by stainless steel. All plastic parts are marked by material's symbol.

*Please check that all the parts of appliance had come completely and if they are damaged or not during the shipping.

B INSTALLATION

*Please place the product to straight and sturdy ground, please take necessary steps against possibility of overturn.

*Technician who will serve for installation and service for the appliance must be professional on this subject and must have installation and service licenses by the company.

*Connection to Electric Power Supply must be done by authorized person.

*Please be sure that the voltage connected to appliance must be equal with the voltage which is on appliance's label.



This appliance must be connected to an earthed outlet in accordance with safety rules and standard.











*Appliance's earthing must be connected to earthing line on panel which is nearest to electric installation.

*Connection to the main fuse and leak current fuse must be done in accordance with the current regulations.

*If the 2 appliance will be placed adjacently, there must be at least 2 cm space between them. The Condensation is prevented.

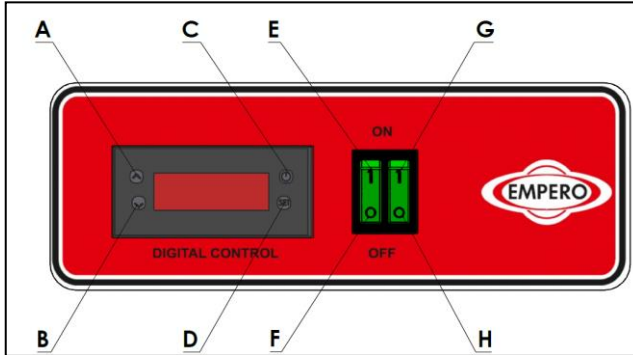
GLASS DOOR REFRIGERATED COUNTERS

C SAFETY INSTRUCTIONS

-  *Do not use the appliance in insufficient lighted place.
-  *Do not touch the moving attachments while the appliance operates.
-  *Do not install the appliance in the presence of flammable or explosive materials.
-  *Do not operate the appliance when the machine is empty.
-  *Do not load so less or more than appliance's capacity.
-  *Do not attempt to use the appliance without suitable protective equipments.
-  *Because of any reason if there is a fire or flame flare where the appliance is used, turn off all gas valves and electric contactor switch quickly and use fire extinguisher. Never use water to extinguish the fire.
-  *All the damages because of not having earthing connection will not be on warranty.
-  *Prevent the appliance to take sunshine directly.
-  *Do not place heavy objects on to the appliance.

D OPERATION

*Control Panel;



- A : Degree increase
- B : Degree reduce
- C : Indicator ON/OFF
- D : SET approval button
- E : ON position
- F : OFF position
- G : Lamp ON
- H : Lamp OFF

*Operating;

- Clean the inner and outer surface of the appliance with warm cloth before first use. Then clean with wet cloth and dry.
- Plug in the appliance.
- Activate ON/OFF button at control panel.
- Activate lamp ON/OFF button for the inner lighting of the refrigerator.
- Set the temperature of the appliance with up-down arrows.
- Operate the appliance for 12 hours when it is empty. at first use .Meanwhile do not open the lids.
- After inserting the products to the appliance,close the lids.
- If the lids are opened often or left opened,these situations can effect the cooling of the products.
- When the appliance is not needed to be used,switch OFF and unplug the appliance.

GLASS DOOR REFRIGERATED COUNTERS

E CLEANING & MAINTENANCE

➤ **CLEANING AND MAINTENANCE AFTER EVERY USE**

- Always turn off the appliance and disconnect from the power supply before cleaning.
- Clean the inner surfaces and shelves with moist cloth and then dry after every evacuation of material.
- Clean the control panel with dry cloth.
- Pay attention the cleaning materials to be hygienic.
- Do not use abrasive cleaning chemicals as these can leave harmful residues.
- Do not clean the appliance by spraying water directly ,otherwise electric motor may get damaged.

➤ **PERIODIC CLEANING AND MAINTENANCE**

- Maintenance should be done by qualified person.
- Get the periodic maintenance of the appliance once in every 15 days.
- Clean the condenser with a plastic rigid brush.
- Clean the fan in periodic times.
- Clean the lid's glasses and dry in periodic times.
- Make periodic maintenance of the fire-extinguisher.



GLASS DOOR REFRIGERATED COUNTERS

F TROUBLESHOOTING

THE APPLIANCE DOESN'T OPERATE	<ol style="list-style-type: none">1. Check if the appliance is plugged in.2. Check the electrical connections and voltage.3. Check if the fuse is on or off.
--------------------------------------	--

THE APPLIANCE IS NOISY	<ol style="list-style-type: none">1. Check the motor.2. If the connection pipes contact with compressor,remove it.
-------------------------------	---

THE APPLIANCE STOPPED	<ol style="list-style-type: none">1. The appliance can stop due to low voltage.In this situation check the voltage.2. If there is any leakage current at electric connections,the appliance stops.In this situation call the authorized service.
------------------------------	---

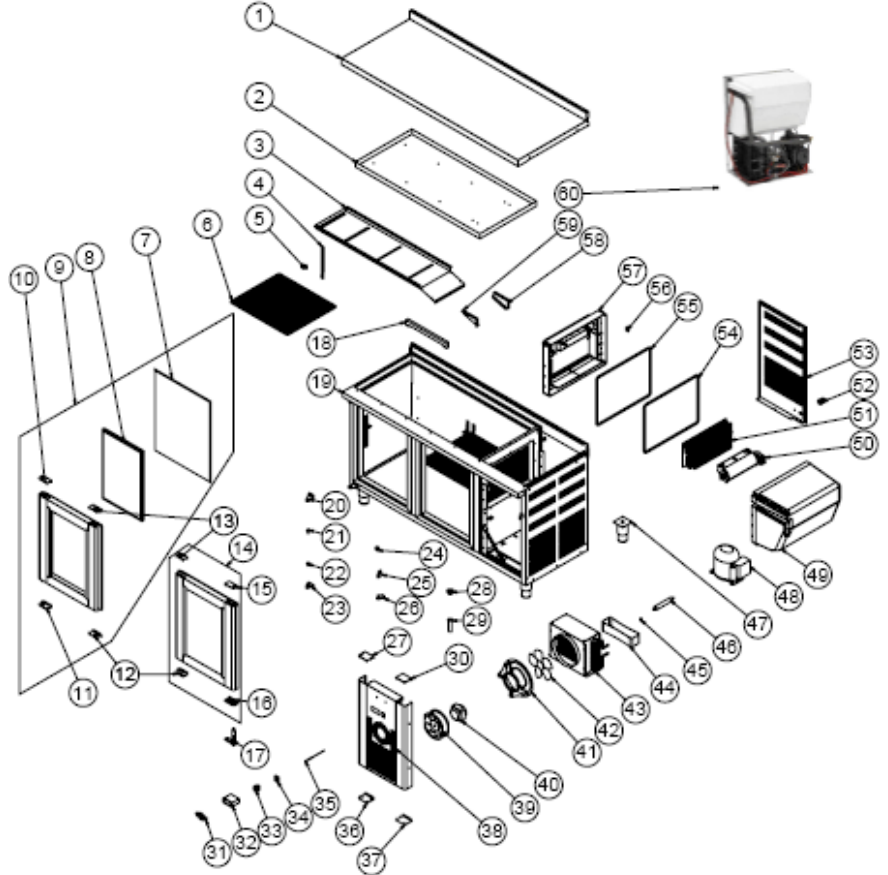
INNER TEMPERATURE IS TOO HIGH	<ol style="list-style-type: none">1. Clean the condenser.2. Check the air conditioning.3. If the hot product is inserted,take it off.4. If the door is opened,close it.
--------------------------------------	--

<ul style="list-style-type: none">• If cooling is not done at suitable quality• If any function of security doesn't work<ul style="list-style-type: none">➤ Do not use the appliance.
--

*** If these problems are still going on,contact with our authorized services.**

GLASS DOOR REFRIGERATED COUNTERS

G SPARE PART LIST- EXPLODING DRAWINGS



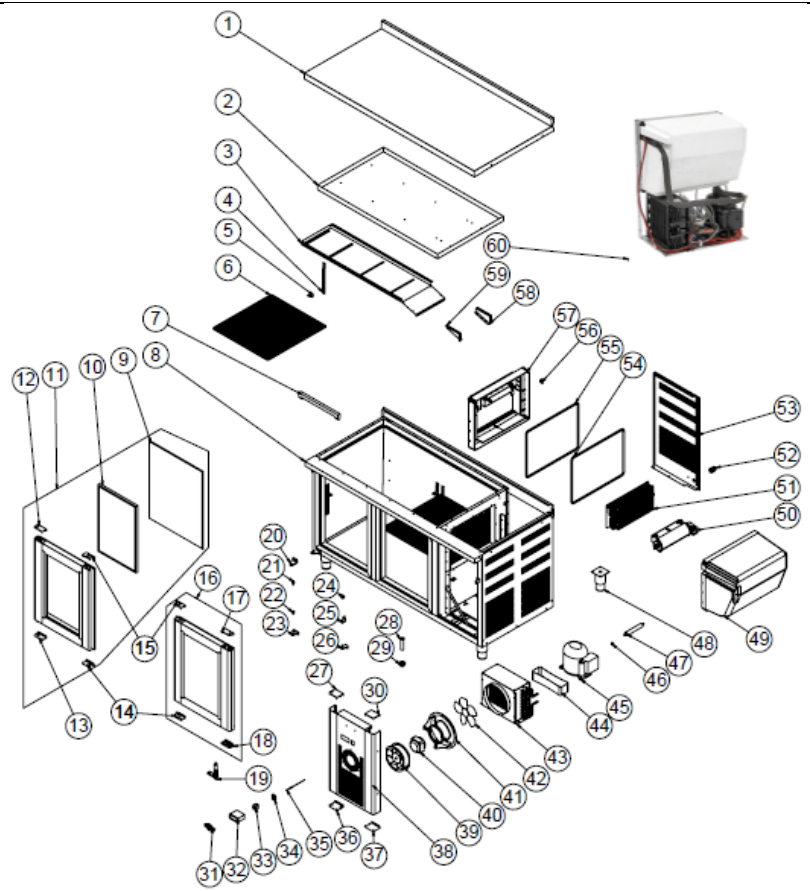
PRODUCT CODE : EMP.150.60.03		
NO	PRODUCT NAME	P. CODE
1	TOP TABLE	YSC-ERK.1560-LZ-0030
2	UPPER PAN SHEET	YSC-ERK.1560-PN-0177
3	CURTAIN SHEET	YSC-ERK.1560-LZ-0063
4	SHELF STRUT	ERK.M.MUH-002
5	SHELF NAIL	M.RAF-ERK-002
6	42*49 SHELF	M.RAF-ERK-001
7	GASKET (590 - 472)	M.CNT-ERK-001
8	508x337 HOTGLASS	M.CAM-ERK-ISI CAM-008
9	GLASS COVER LEFT	ARA-1560-CAMAKB-001
10	HINGE TOP PLASTIC LEFT	M.ENJ-ERK-PLS-110

GLASS DOOR REFRIGERATED COUNTERS

11	HINGE BOTTOM PLASTIC LEFT	M.ENJ-ERK-PLS-109
12	HAND PLASTIC BOTTOM	M.PLS-ERK-030
13	HAND PLASTIC TOP	M.PLS-ERK-029
14	GLASS COVER RIGHT	ARA-1560-CAMAKB-002
15	HINGE TOP PLASTIC RIGHT	M.ENJ-ERK-PLS-108
16	HINGE BOTTOM PLASTIC RIGHT	M.ENJ-ERK-PLS-107
17	HINGE	M.AKS-MNT-SC-007
18	LED LAMP	M.ELK-LMB-ARM-006
19	CHASSIS	-
20	UPPER RIGHT HINGE SHEET	M.AKS-MNT-SC-001
21	PIN	M.AKS-MNT-SC-005
22	BUSH PLASTIC	M.ENJ-ERK-PLS-022
23	BOTTOM LEFT HINGE SHEET	M.AKS-MNT-SC-002
24	PLUG	M.ENJ-ERK-PLS-029
25	HOLDER PLASTIC	M.ENJ-ERK-PLS-009
26	HINGE	M.ENJ-ERK-PLS-010
27	TOP PLASTIC LEFT	M.ENJ-ERK-PLS-111
28	NUT	M.ENJ-ERK-PLS-024
29	PIPE	M.ENJ-ERK-PLS-002
30	TOP LEFT PLASTIC	M.PLS-ERK-031
31	METAL LABEL	M.AKS-OZL-MTL-002
32	THERMOSTAT	M.ELK-EDM-DGT-043
33	SWITCH	ERK.M.ELK-SLT-ANL-002
34	HOUSING PLASTIC	M.PLS-ERK-002
35	PROP	ERK.M.ELK-EDM-DGT-012
36	BOTTOM PLASTIC LEFT	M.ENJ-ERK-PLS-112
37	BOTTOM LEFT PLASTIC	M.PLS-ERK-032
38	ENGINE DOOR SHEET	YSC-ERK.1560-PN-0147
39	FAN	ERK.M.ELK-HVL-KFN-001
40	FAN MOTOR	M.ELK-MTR-FMT-014
41	FAN CIRCLE PLASTIC	M.ENJ-ERK-PLS-001
42	WING	M.ELK-HVL-FKN-004
43	CONDENSER NEGATIVE	M.SOG-KDS-027
44	TOOLS	M.PLS-ERK-038
45	SIBO	M.SOG-MUH-001
46	DRAYER	M.SOG-DRY-004
47	FOOT	ERK.M.AKS-AYK-INX-001
48	COMPRESSOR	M.SOG-KMS-018
49	INSULATION FOAM	YIZ-ERK.1560-MH-0001
50	FAN	ERK.M.ELK-HVL-KFN-003
51	EVAP SMALL POSITIVE (+)	M.SOG-EVP-033
52	CABLE GLAND	ERK.M.ELK-RKR-PLS-003
53	ENGINE BACK COVER SHEET	YSC-ERK.1560-PN-0122
54	OUTER GASKET	M.CNT-ERK-069
55	INTERNAL GASKET	M.CNT-ERK-070
56	CORNER PLASTIC	M.PLS-ERK-027
57	MONOBLOCK PLASTIC	M.PLS-ERK-026
58	CURTAIN RIGHT SIDE SHEET	YSC-ERK.1560-LZ-0064
59	CURTAIN LEFT SIDE SHEET	YSC-ERK.1560-LZ-0065
60	COOLING GROUP	ARA-ERK.1560-0003-AKB

GLASS DOOR REFRIGERATED COUNTERS

G SPARE PART LIST- EXPLODING DRAWINGS



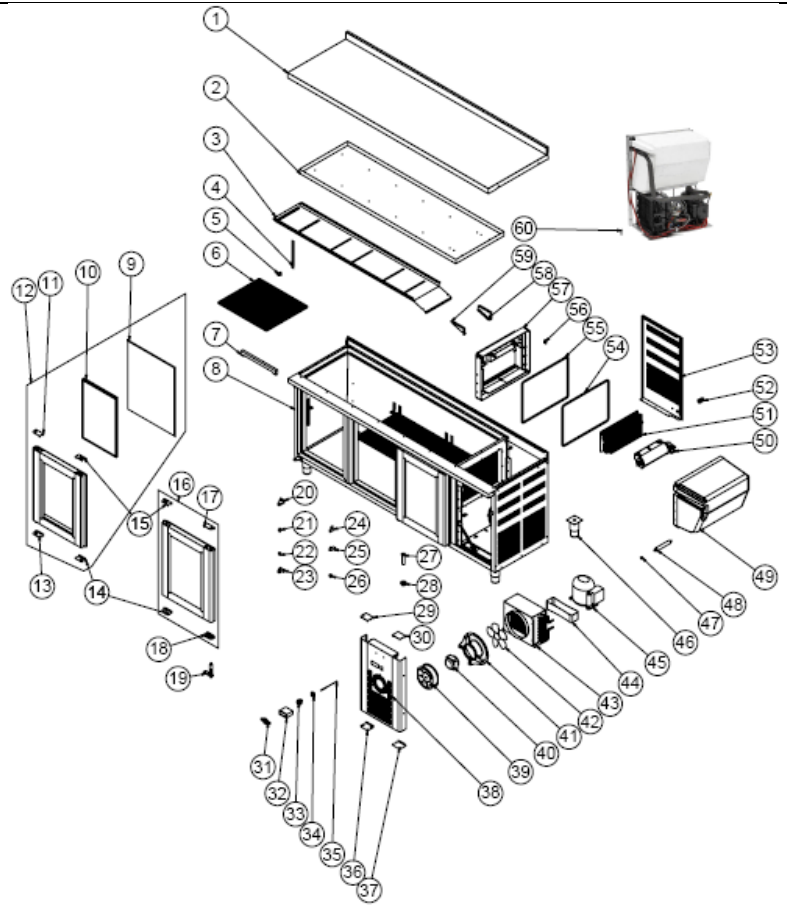
PRODUCT CODE : EMP.150.70.03		
NO	PRODUCT NAME	P. CODE
1	TOP TABLE SHEET	YSC-ERK.1570-LZ-0040
2	UPPER PAN SHEET	YSC-ERK.1570-PN-0291
3	CURTAIN SHEET	YSC-ERK.1560-LZ-0063
4	SHELF STRUT	ERK.M.MUH-002
5	SHELF NAIL	M.RAF-ERK-002
6	49*52 SHELF	M.RAF-ERK-003
7	LED LAMP	M.ELK-LMB-ARM-006
8	CHASSIS	-
9	GASKET (590 - 472)	M.CNT-ERK-001
10	508x337 HOTGLASS	M.CAM-ERK-ISI CAM-008

GLASS DOOR REFRIGERATED COUNTERS

11	GLASS COVER LEFT	ARA-1560-CAMAKB-001
12	HINGE TOP PLASTIC LEFT	M.ENJ-ERK-PLS-110
13	HINGE BOTTOM PLASTIC LEFT	M.ENJ-ERK-PLS-109
14	HAND PLASTIC BOTTOM	M.PLS-ERK-030
15	HAND PLASTIC TOP	M.PLS-ERK-029
16	GLASS COVER RIGHT	ARA-1560-CAMAKB-002
17	HINGE TOP PLASTIC RIGHT	M.ENJ-ERK-PLS-108
18	HINGE BOTTOM PLASTIC RIGHT	M.ENJ-ERK-PLS-107
19	HINGE	M.AKS-MNT-SC-007
20	UPPER RIGHT HINGE SHEET	M.AKS-MNT-SC-001
21	PIN	M.AKS-MNT-SC-005
22	BUSH PLASTIC	M.ENJ-ERK-PLS-022
23	BOTTOM LEFT HINGE SHEET	M.AKS-MNT-SC-002
24	MAGNET	M.MIK-SRT-ERK-001
25	HOLDER PLASTIC	M.ENJ-ERK-PLS-009
26	HINGE	M.ENJ-ERK-PLS-010
27	TOP PLASTIC LEFT	M.ENJ-ERK-PLS-111
28	PIPE	M.ENJ-ERK-PLS-002
29	NUT	M.ENJ-ERK-PLS-024
30	TOP LEFT PLASTIC	M.PLS-ERK-031
31	METAL LABEL	M.AKS-OZL-MTL-002
32	THERMOSTAT	M.ELK-EDM-DGT-043
33	SWITCH	ERK.M.ELK-SLT-ANL-002
34	HOUSING PLASTIC	M.PLS-ERK-002
35	PROP	ERK.M.ELK-EDM-DGT-012
36	BOTTOM PLASTIC LEFT	M.ENJ-ERK-PLS-112
37	BOTTOM LEFT PLASTIC	M.PLS-ERK-032
38	ENGINE DOOR SHEET	YSC-ERK.1560-PN-0147
39	FAN	ERK.M.ELK-HVL-KFN-001
40	FAN MOTOR	M.ELK-MTR-FMT-014
41	FAN CIRCLE PLASTIC	M.ENJ-ERK-PLS-001
42	WING	M.ELK-HVL-FKN-004
43	CONDENSER NEGATIVE	M.SOG-KDS-027
44	TOOLS	M.PLS-ERK-038
45	COMPRESSOR	M.SOG-KMS-018
46	SIBO	M.SOG-MUH-001
47	DRAYER	M.SOG-DRY-004
48	FOOT	ERK.M.AKS-AYK-INX-001
49	INSULATION FOAM	YIZ-ERK.1560-MH-0001
50	FAN	ERK.M.ELK-HVL-KFN-003
51	EVAP SMALL POSITIVE (+)	M.SOG-EVP-033
52	CABLE GLAND	ERK.M.ELK-RKR-PLS-003
53	ENGINE BACK COVER SHEET	YSC-ERK.1560-PN-0122
54	OUTER GASKET	M.CNT-ERK-069
55	INTERNAL GASKET	M.CNT-ERK-070
56	CORNER PLASTIC	M.PLS-ERK-027
57	MONOBLOCK PLASTIC	M.PLS-ERK-026
58	CURTAIN RIGHT SIDE SHEET	YSC-ERK.1560-LZ-0064
59	CURTAIN LEFT SIDE SHEET	YSC-ERK.1560-LZ-0065
60	COOLING GROUP	ARA-ERK.1560-0003-AKB

GLASS DOOR REFRIGERATED COUNTERS

G SPARE PART LIST- EXPLODING DRAWINGS



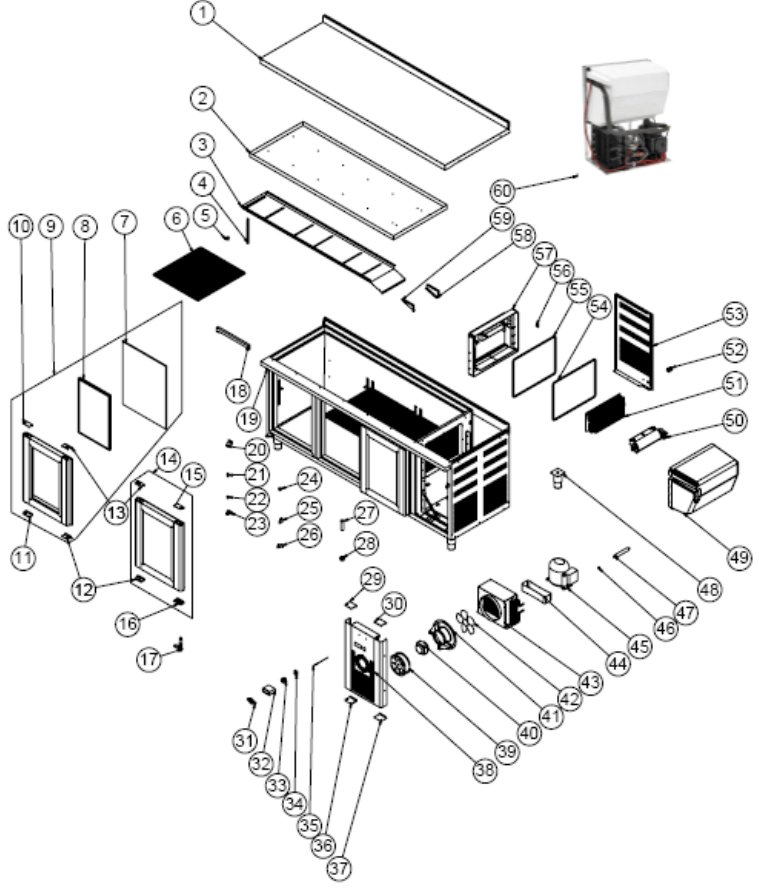
PRODUCT CODE : EMP.200.60.03		
NO	PRODUCT NAME	P. CODE
1	TOP TABLE	YSC-ERK.2060-LZ-0007
2	UPPER PAN SHEET	YSC-ERK.2060-PN-0093
3	CURTAIN SHEET	YSC-ERK.2060-LZ-0019
4	SHELF STRUT	ERK.M.MUH-002
5	SHELF NAIL	M.RAF-ERK-002
6	42*49 SHELF	M.RAF-ERK-001
7	LED LAMP	M.ELK-LMB-ARM-006
8	CHASSIS	-
9	GASKET (590 - 472)	M.CNT-ERK-001
10	508x337 HOTGLASS	M.CAM-ERK-ISI CAM-008

GLASS DOOR REFRIGERATED COUNTERS

11	HINGE TOP PLASTIC LEFT	M.ENJ-ERK-PLS-110
12	GLASS COVER LEFT	ARA-1560-CAMAKB-001
13	HINGE BOTTOM PLASTIC LEFT	M.ENJ-ERK-PLS-109
14	HAND PLASTIC BOTTOM	M.PLS-ERK-030
15	HAND PLASTIC TOP	M.PLS-ERK-029
16	GLASS COVER RIGHT	ARA-1560-CAMAKB-002
17	HINGE TOP PLASTIC RIGHT	M.ENJ-ERK-PLS-108
18	HINGE BOTTOM PLASTIC RIGHT	M.ENJ-ERK-PLS-107
19	HINGE	M.AKS-MNT-SC-007
20	UPPER RIGHT HINGE SHEET	M.AKS-MNT-SC-001
21	PIN	M.AKS-MNT-SC-005
22	BUSH PLASTIC	M.ENJ-ERK-PLS-022
23	BOTTOM LEFT HINGE SHEET	M.AKS-MNT-SC-002
24	HOLDER PLASTIC	M.ENJ-ERK-PLS-009
25	HINGE	M.ENJ-ERK-PLS-010
26	MAGNET	M.MIK-SRT-ERK-001
27	PIPE	M.ENJ-ERK-PLS-002
28	NUT	M.ENJ-ERK-PLS-024
29	TOP PLASTIC LEFT	M.ENJ-ERK-PLS-111
30	TOP LEFT PLASTIC	M.PLS-ERK-031
31	METAL LABEL	M.AKS-OZL-MTL-002
32	THERMOSTAT	M.ELK-EDM-DGT-043
33	SWITCH	ERK.M.ELK-SLT-ANL-002
34	HOUSING PLASTIC	M.PLS-ERK-002
35	PROP	ERK.M.ELK-EDM-DGT-012
36	BOTTOM PLASTIC LEFT	M.ENJ-ERK-PLS-112
37	BOTTOM LEFT PLASTIC	M.PLS-ERK-032
38	ENGINE DOOR SHEET	YSC-ERK.1560-PN-0147
39	FAN	ERK.M.ELK-HVL-KFN-001
40	FAN MOTOR	M.ELK-MTR-FMT-014
41	FAN CIRCLE PLASTIC	M.ENJ-ERK-PLS-001
42	WING	M.ELK-HVL-FKN-004
43	CONDENSER NEGATIVE	M.SOG-KDS-027
44	TOOLS	M.PLS-ERK-038
45	COMPRESSOR	M.SOG-KMS-018
46	FOOT	ERK.M.AKS-AYK-INX-001
47	SIBO	M.SOG-MUH-001
48	DRAYER	M.SOG-DRY-004
49	INSULATION FOAM	YIZ-ERK.1560-MH-0001
50	FAN	ERK.M.ELK-HVL-KFN-003
51	EVAP SMALL POSITIVE (+)	M.SOG-EVP-033
52	CABLE GLAND	ERK.M.ELK-RKR-PLS-003
53	ENGINE BACK COVER SHEET	YSC-ERK.1560-PN-0122
54	OUTER GASKET	M.CNT-ERK-069
55	INTERNAL GASKET	M.CNT-ERK-070
56	CORNER PLASTIC	M.PLS-ERK-027
57	MONOBLOCK PLASTIC	M.PLS-ERK-026
58	CURTAIN RIGHT SIDE SHEET	YSC-ERK.1560-LZ-0064
59	CURTAIN LEFT SIDE SHEET	YSC-ERK.1560-LZ-0065
60	COOLING GROUP	ARA-ERK.2060-0002-AKB

GLASS DOOR REFRIGERATED COUNTERS

G SPARE PART LIST- EXPLODING DRAWINGS



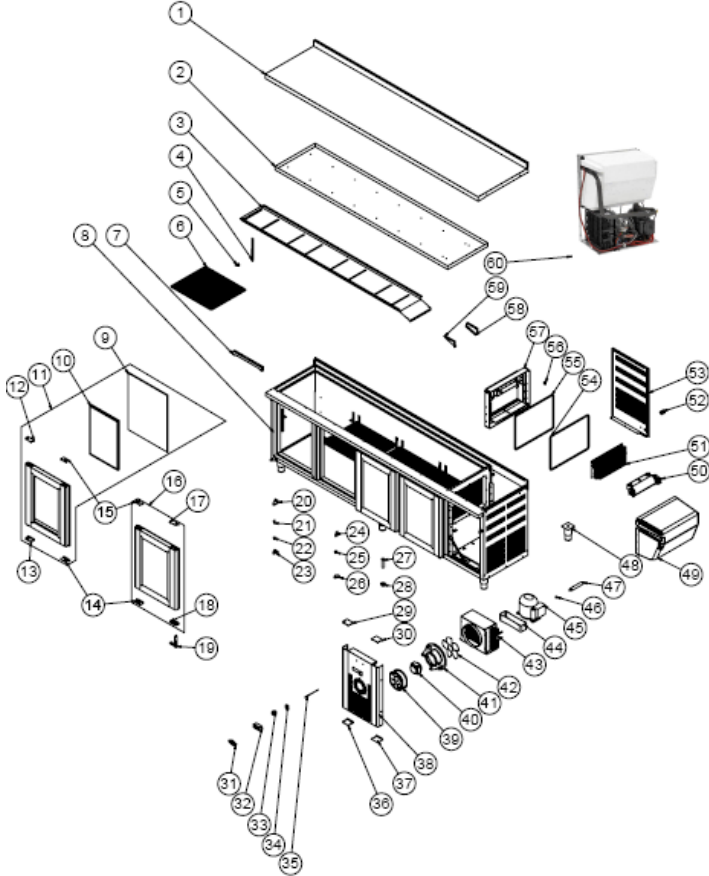
PRODUCT CODE : EMP.200.70.03		
NO	PRODUCT NAME	P. CODE
1	TOP TABLE SHEET	YSC-ERK.2070-LZ-0026
2	UPPER PAN SHEET	YSC-ERK.2070-PN-0129
3	CURTAIN SHEET	YSC-ERK.2060-LZ-0019
4	SHELF STRUT	ERK.M.MUH-002
5	SHELF NAIL	M.RAF-ERK-002
6	49*52 SHELF	M.RAF-ERK-003
7	GASKET (590 - 472)	M.CNT-ERK-001
8	508x337 HOTGLASS	M.CAM-ERK-ISI CAM-008
9	GLASS COVER LEFT	ARA-1560-CAMAKB-001
10	HINGE TOP PLASTIC LEFT	M.ENJ-ERK-PLS-110

GLASS DOOR REFRIGERATED COUNTERS

11	HINGE BOTTOM PLASTIC LEFT	M.ENJ-ERK-PLS-109
12	HAND PLASTIC BOTTOM	M.PLS-ERK-030
13	HAND PLASTIC TOP	M.PLS-ERK-029
14	GLASS COVER RIGHT	ARA-1560-CAMAKB-002
15	HINGE TOP PLASTIC RIGHT	M.ENJ-ERK-PLS-108
16	HINGE BOTTOM PLASTIC RIGHT	M.ENJ-ERK-PLS-107
17	HINGE	M.AKS-MNT-SC-007
18	LED LAMP	M.ELK-LMB-ARM-006
19	CHASSIS	-
20	UPPER RIGHT HINGE SHEET	M.AKS-MNT-SC-001
21	PIN	M.AKS-MNT-SC-005
22	BUSH PLASTIC	M.ENJ-ERK-PLS-022
23	BOTTOM LEFT HINGE SHEET	M.AKS-MNT-SC-002
24	MAGNET	M.MIK-SRT-ERK-001
25	HOLDER PLASTIC	M.ENJ-ERK-PLS-009
26	HINGE	M.ENJ-ERK-PLS-010
27	PIPE	M.ENJ-ERK-PLS-002
28	NUT	M.ENJ-ERK-PLS-024
29	TOP PLASTIC LEFT	M.ENJ-ERK-PLS-111
30	TOP LEFT PLASTIC	M.PLS-ERK-031
31	METAL LABEL	M.AKS-OZL-MTL-002
32	THERMOSTAT	M.ELK-EDM-DGT-043
33	SWITCH	ERK.M.ELK-SLT-ANL-002
34	HOUSING PLASTIC	M.PLS-ERK-002
35	PROP	ERK.M.ELK-EDM-DGT-012
36	BOTTOM PLASTIC LEFT	M.ENJ-ERK-PLS-112
37	BOTTOM LEFT PLASTIC	M.PLS-ERK-032
38	ENGINE DOOR SHEET	YSC-ERK.1560-PN-0147
39	FAN	ERK.M.ELK-HVL-KFN-001
40	FAN MOTOR	M.ELK-MTR-FMT-014
41	FAN CIRCLE PLASTIC	M.ENJ-ERK-PLS-001
42	WING	M.ELK-HVL-FKN-004
43	CONDENSER NEGATIVE	M.SOG-KDS-027
44	TOOLS	M.PLS-ERK-038
45	COMPRESSOR	M.SOG-KMS-018
46	SIBO	M.SOG-MUH-001
47	DRAYER	M.SOG-DRY-004
48	FOOT	ERK.M.AKS-AYK-INX-001
49	INSULATION FOAM	YIZ-ERK.1560-MH-0001
50	FAN	ERK.M.ELK-HVL-KFN-003
51	EVAP SMALL POSITIVE (+)	M.SOG-EVP-033
52	CABLE GLAND	ERK.M.ELK-RKR-PLS-003
53	ENGINE BACK COVER SHEET	YSC-ERK.1560-PN-0122
54	OUTER GASKET	M.CNT-ERK-069
55	INTERNAL GASKET	M.CNT-ERK-070
56	CORNER PLASTIC	M.PLS-ERK-027
57	MONOBLOCK PLASTIC	M.PLS-ERK-026
58	CURTAIN RIGHT SIDE SHEET	YSC-ERK.1560-LZ-0064
59	CURTAIN LEFT SIDE SHEET	YSC-ERK.1560-LZ-0065
60	COOLING GROUP	ARA-ERK.2060-0002-AKB

GLASS DOOR REFRIGERATED COUNTERS

G SPARE PART LIST- EXPLODING DRAWINGS



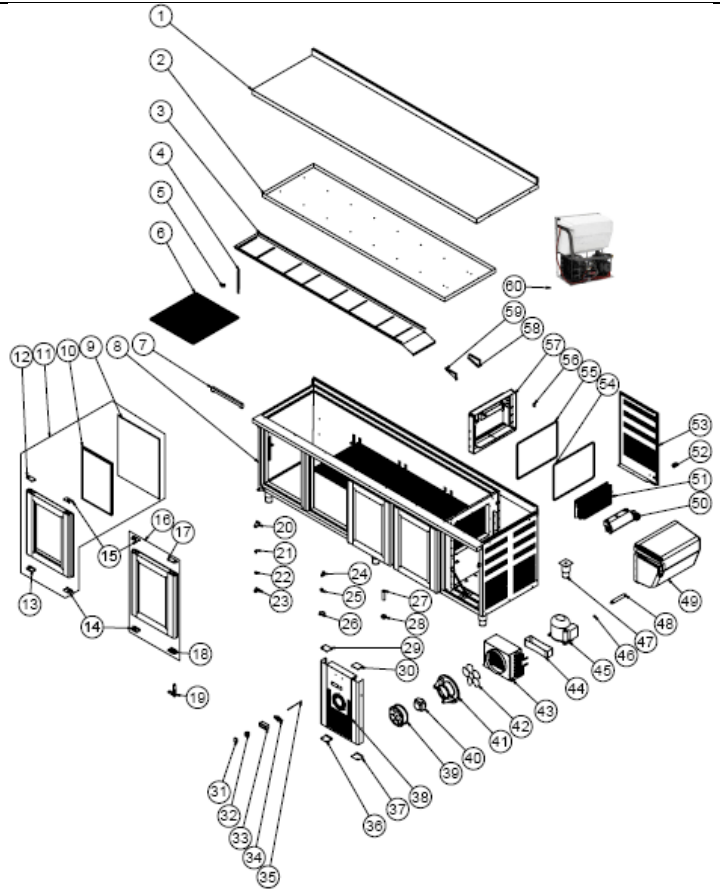
PRODUCT CODE : EMP.255.60.03		
NO	PRODUCT NAME	P. CODE
1	TOP TABLE	YSC-ERK.2560-LZ-0017
2	UPPER PAN SHEET	YSC-ERK.2560-PN-0087
3	CURTAIN SHEET	YSC-ERK.2560-LZ-0028
4	SHELF STRUT	ERK.M.MUH-002
5	SHELF NAIL	M.RAF-ERK-002
6	42*49 SHELF	M.RAF-ERK-001
7	LED LAMP	M.ELK-LMB-ARM-006
8	CHASSIS	-
9	GASKET (590 - 472)	M.CNT-ERK-001
10	508x337 HOTGLASS	M.CAM-ERK-ISI CAM-008

GLASS DOOR REFRIGERATED COUNTERS

11	GLASS COVER LEFT	ARA-1560-CAMAKB-001
12	HINGE TOP PLASTIC LEFT	M.ENJ-ERK-PLS-110
13	HINGE BOTTOM PLASTIC LEFT	M.ENJ-ERK-PLS-109
14	HAND PLASTIC BOTTOM	M.PLS-ERK-030
15	HAND PLASTIC TOP	M.PLS-ERK-029
16	GLASS COVER RIGHT	ARA-1560-CAMAKB-002
17	HINGE TOP PLASTIC RIGHT	M.ENJ-ERK-PLS-108
18	HINGE BOTTOM PLASTIC RIGHT	M.ENJ-ERK-PLS-107
19	HINGE	M.AKS-MNT-SC-007
20	UPPER RIGHT HINGE SHEET	M.AKS-MNT-SC-001
21	PIN	M.AKS-MNT-SC-005
22	BUSH PLASTIC	M.ENJ-ERK-PLS-022
23	BOTTOM LEFT HINGE SHEET	M.AKS-MNT-SC-002
24	HOLDER PLASTIC	M.ENJ-ERK-PLS-009
25	MAGNET	M.MIK-SRT-ERK-001
26	HINGE	M.ENJ-ERK-PLS-010
27	PIPE	M.ENJ-ERK-PLS-002
28	NUT	M.ENJ-ERK-PLS-024
29	TOP PLASTIC LEFT	M.ENJ-ERK-PLS-111
30	TOP LEFT PLASTIC	M.PLS-ERK-031
31	METAL LABEL	M.AKS-OZL-MTL-002
32	THERMOSTAT	M.ELK-EDM-DGT-043
33	SWITCH	ERK.M.ELK-SLT-ANL-002
34	HOUSING PLASTIC	M.PLS-ERK-002
35	PROP	ERK.M.ELK-EDM-DGT-012
36	BOTTOM PLASTIC LEFT	M.ENJ-ERK-PLS-112
37	BOTTOM LEFT PLASTIC	M.PLS-ERK-032
38	ENGINE GLASS DOOR SHEET	YSC-ERK.2560-PN-0080
39	FAN	ERK.M.ELK-HVL-KFN-001
40	FAN MOTOR	M.ELK-MTR-FMT-014
41	FAN CIRCLE PLASTIC	M.ENJ-ERK-PLS-001
42	WING	M.ELK-HVL-FKN-004
43	CONDENSER NEGATIVE	M.SOG-KDS-027
44	TOOLS	M.PLS-ERK-038
45	COMPRESSOR	M.SOG-KMS-022
46	SIBO	M.SOG-MUH-001
47	DRAYER	M.SOG-DRY-004
48	FOOT	ERK.M.AKS-AYK-INX-001
49	INSULATION FOAM	YIZ-ERK.1560-MH-0001
50	FAN	ERK.M.ELK-HVL-KFN-003
51	EVAP BIG POSITIVE (+)	M.SOG-EVP-044
52	CABLE GLAND	ERK.M.ELK-RKR-PLS-003
53	ENGINE BACK COVER SHEET	YSC-ERK.2560-PN-0068
54	OUTER GASKET	M.CNT-ERK-069
55	INTERNAL GASKET	M.CNT-ERK-070
56	CORNER PLASTIC	M.PLS-ERK-027
57	MONOBLOCK PLASTIC	M.PLS-ERK-026
58	CURTAIN RIGHT SIDE SHEET	YSC-ERK.1560-LZ-0064
59	CURTAIN LEFT SIDE SHEET	YSC-ERK.1560-LZ-0065
60	COOLING GROUP	ARA-ERK.2560-0003-AKB

GLASS DOOR REFRIGERATED COUNTERS

G SPARE PART LIST- EXPLODING DRAWINGS



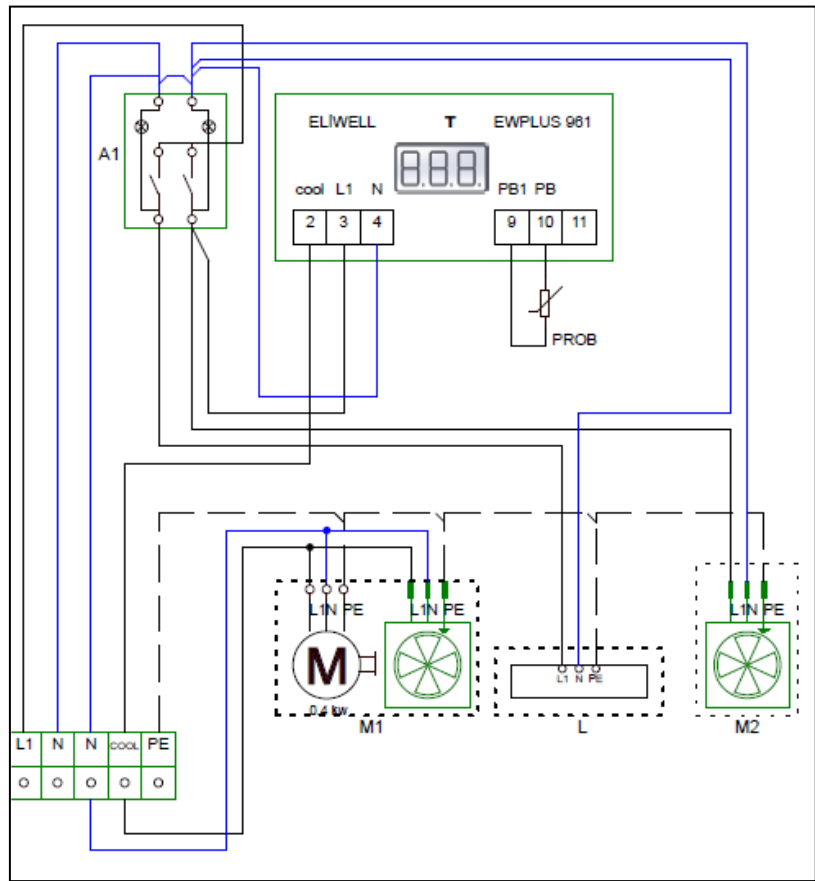
PRODUCT CODE : EMP.255.70.03		
NO	PRODUCT NAME	P. CODE
1	TOP TABLE SHEET	YSC-ERK.2570-LZ-0007
2	UPPER PAN SHEET	YSC-ERK.2570-PN-0042
3	CURTAIN SHEET	YSC-ERK.2560-LZ-0028
4	SHELF STRUT	ERK.M.MUH-002
5	SHELF NAIL	M.RAF-ERK-002
6	49*52 SHELF	M.RAF-ERK-003
7	LED LAMP	M.ELK-LMB-ARM-006
8	CHASSIS	-
9	GASKET (590 - 472)	M.CNT-ERK-001
10	508x337 HOTGLASS	M.CAM-ERK-ISI CAM-008

GLASS DOOR REFRIGERATED COUNTERS

11	GLASS COVER LEFT	ARA-1560-CAMAKB-001
12	HINGE TOP PLASTIC LEFT	M.ENJ-ERK-PLS-110
13	HINGE BOTTOM PLASTIC LEFT	M.ENJ-ERK-PLS-109
14	HAND PLASTIC BOTTOM	M.PLS-ERK-030
15	HAND PLASTIC TOP	M.PLS-ERK-029
16	GLASS COVER RIGHT	ARA-1560-CAMAKB-002
17	HINGE TOP PLASTIC RIGHT	M.ENJ-ERK-PLS-108
18	HINGE BOTTOM PLASTIC RIGHT	M.ENJ-ERK-PLS-107
19	HINGE	M.AKS-MNT-SC-007
20	UPPER RIGHT HINGE SHEET	M.AKS-MNT-SC-001
21	PIN	M.AKS-MNT-SC-005
22	BUSH PLASTIC	M.ENJ-ERK-PLS-022
23	BOTTOM LEFT HINGE SHEET	M.AKS-MNT-SC-002
24	HOLDER PLASTIC	M.ENJ-ERK-PLS-009
25	MAGNET	M.MIK-SRT-ERK-001
26	HINGE	M.ENJ-ERK-PLS-010
27	PIPE	M.ENJ-ERK-PLS-002
28	NUT	M.ENJ-ERK-PLS-024
29	TOP PLASTIC LEFT	M.ENJ-ERK-PLS-111
30	TOP LEFT PLASTIC	M.PLS-ERK-031
31	HOUSING PLASTIC	M.PLS-ERK-002
32	SWITCH	ERK.M.ELK-SLT-ANL-002
33	THERMOSTAT	M.ELK-EDM-DGT-043
34	METAL LABEL	M.AKS-OZL-MTL-002
35	PROP	ERK.M.ELK-EDM-DGT-012
36	BOTTOM PLASTIC LEFT	M.ENJ-ERK-PLS-112
37	BOTTOM LEFT PLASTIC	M.PLS-ERK-032
38	ENGINE GLASS DOOR SHEET	YSC-ERK.2560-PN-0080
39	FAN	ERK.M.ELK-HVL-KFN-001
40	FAN MOTOR	M.ELK-MTR-FMT-014
41	FAN CIRCLE PLASTIC	M.ENJ-ERK-PLS-001
42	WING	M.ELK-HVL-FKN-004
43	CONDENSER NEGATIVE	M.SOG-KDS-027
44	TOOLS	M.PLS-ERK-038
45	COMPRESSOR	M.SOG-KMS-022
46	SIBO	M.SOG-MUH-001
47	FOOT	ERK.M.AKS-AYK-INX-001
48	DRAYER	M.SOG-DRY-004
49	INSULATION FOAM	YIZ-ERK.1560-MH-0001
50	FAN	ERK.M.ELK-HVL-KFN-003
51	EVAP BIG POSITIVE (+)	M.SOG-EVP-044
52	CABLE GLAND	ERK.M.ELK-RKR-PLS-003
53	ENGINE BACK COVER SHEET	YSC-ERK.2560-PN-0068
54	OUTER GASKET	M.CNT-ERK-069
55	INTERNAL GASKET	M.CNT-ERK-070
56	CORNER PLASTIC	M.PLS-ERK-027
57	MONOBLOCK PLASTIC	M.PLS-ERK-026
58	CURTAIN RIGHT SIDE SHEET	YSC-ERK.1560-LZ-0064
59	CURTAIN LEFT SIDE SHEET	YSC-ERK.1560-LZ-0065
60	COOLING GROUP	ARA-ERK.2560-0003-AKB

GLASS DOOR REFRIGERATED COUNTERS

H ELECTRIC CIRCUIT SCHEMA



I	A1	T	M1	M2	L
Terminal	Double lighted 0-1 switch	Digital Indicator	Compressor and condenser fan	Inner cooling fan	Inner lighting lamp