



REFRIGERATED COUNTERS WITH DRAWER

CONTENTS

A	GENERAL INFORMATION.....	Page 2
A1	PRODUCT DESCRIPTION.....	Page 3
A2	TECHNICAL INFORMATION.....	Page 3
A3	TRANSPORTATION	Page 4
A4	UNPACKING	Page 4
B	INSTALLATION	Page 4
C	SAFETY INSTRUCTIONS	Page 5
D	OPERATION	Page 6
E	CLEANING & MAINTENANCE.....	Page 7
F	TROUBLESHOOTING.....	Page 8
G	SPARE PART LIST- EXPLODING DRAWING	Page 9
H	ELECTRIC CIRCUIT SCHEMA	Page 27

A GENERAL INFORMATION

Before installing the appliance, read operation and maintenance instructions carefully. Wrong installation and part changing may damage the product or may cause injury on people. These are not in our company's responsibility to damage the appliance intentionally, negligence, detriments because of disobeying instructions and regulations, wrong connections. Unauthorized intervention to appliance invalidates the warranty.

1. This instruction manual should be kept in a safe place for future reference.
2. **Installation should be made in accordance with ordinances and security rules of that country by a qualified service personnel.**
3. This appliance has to be used by trained person.
4. Please turn off the appliance immediately in the event of malfunction or failure. The appliance should be repaired only by authorized service personnel. Please demand original spare part.

REFRIGERATED COUNTERS WITH DRAWER

A1 PRODUCT DESCRIPTION

*The Professional Refrigerated Counters With Drawer ,that provides high efficiency has been designed to be used in industrial kitchen.

Product Code	Dimensions (mm)	Weight (kg)	Packaging Dimensions (mm)
EMP.150.70.01-2C	1500x700x850	137	1540x730x970
EMP.150.70.01-4C	1500x700x850	160	1540x730x970
EMP.200.70.01-2C	2000x700x850	163	2040x730x970
EMP.200.70.01-4C	2000x700x850	182	2040x730x970
EMP.200.70.01-6C	2000x700x850	207	2040x730x970
EMP.255.70.01-2C	2550x700x850	207	2600x730x970
EMP.255.70.01-4C	2550x700x850	226	2600x730x970
EMP.255.70.01-6C	2550x700x850	248	2600x730x970
EMP.255.70.01-8C	2550x700x850	275	2600x730x970

A2 TECHNICAL INFORMATION

Product Code	Capacity (Lt)	Gas Type	Gas Weight (gr)	Power (KW)
EMP.150.70.01-2C	300	R290	120	0,14
EMP.150.70.01-4C	300	R290	140	0,17
EMP.200.70.01-2C	500	R290	120	0,16
EMP.200.70.01-4C	500	R290	140	0,16
EMP.200.70.01-6C	550	R290	140	0,31
EMP.255.70.01-2C	700	R290		0,21
EMP.255.70.01-4C	700	R290		0,21
EMP.255.70.01-6C	700	R290		0,37
EMP.255.70.01-8C	700	R290		0,60

Operat. Voltage (V)	220-230
Cable (mm ²)	3x1,5
Fuse (A)	25
Operating Range (°C)	+0 / +5

REFRIGERATED COUNTERS WITH DRAWER

A3 TRANSPORTATION

*This appliance can not be moved by hand from area to area. It must be moved on pallet with forklift truck.

A4 UNPACKING

*Please unpack the package according to the security codes and ordinances of current country and get rid from the pack. Parts which contacts with food are produced by stainless steel. All plastic parts are marked by material's symbol.

*Please check that all the parts of appliance had come completely and if they are damaged or not during the shipping.

B INSTALLATION

*Please place the product to straight and sturdy ground, please take necessary steps against possibility of overturn.

*Technician who will serve for installation and service for the appliance must be professional on this subject and must have installation and service licenses by the company.

*Connection to Electric Power Supply must be done by authorized person.

*Please be sure that the voltage connected to appliance must be equal with the voltage which is on appliance's label.



This appliance must be connected to an earthed outlet in accordance with safety rules and standard.











*Appliance's earthing must be connected to earthing line on panel which is nearest to electric installation.

*Connection to the main fuse and leak current fuse must be done in accordance with the current regulations.

*If the 2 appliance will be placed adjacently, there must be at least 2 cm space between them. The Condensation is prevented.

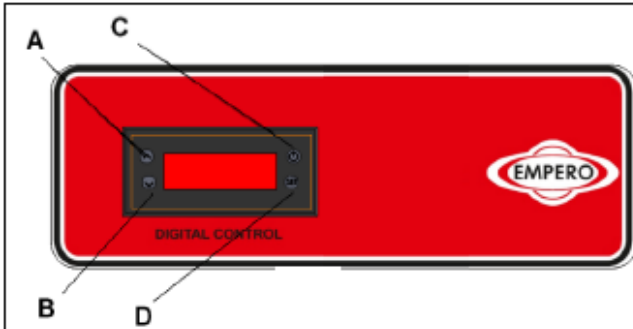
REFRIGERATED COUNTERS WITH DRAWER

C SAFETY INSTRUCTIONS

-  *Do not use the appliance in insufficient lighted place.
-  *Do not touch the moving attachments while the appliance operates.
-  *Do not install the appliance in the presence of flammable or explosive materials.
-  *Do not operate the appliance when the machine is empty.
-  *Do not load so less or more than appliance's capacity.
-  *Do not attempt to use the appliance without suitable protective equipments.
-  *Because of any reason if there is a fire or flame flare where the appliance is used, turn off all gas valves and electric contactor switch quickly and use fire extinguisher. Never use water to extinguish the fire.
-  *All the damages because of not having earthing connection will not be on warranty.
-  *Prevent the appliance to take sunshine directly.
-  *Do not place heavy objects on to the appliance.

D OPERATION

*Control Panel;



- A : Degree increase
- B : Degree reduce
- C : Indicator ON/OFF
- D : SET approval button

*Operating;

- Clean the inner and outer surface of the appliance with warm cloth before first use. Then clean with wet cloth and dry.
- Plug in the appliance.
- Set the temperature of the appliance with up-down arrows.
- Operate the appliance for 12 hours when it is empty. at first use .Meanwhile do not open the lids.
- After inserting the products to the appliance, close the lids.
- If the lids are opened often or left opened, these situations can effect the cooling of the products.

REFRIGERATED COUNTERS WITH DRAWER

E CLEANING & MAINTENANCE

➤ **CLEANING AND MAINTENANCE AFTER EVERY USE**

- Always turn off the appliance and disconnect from the power supply before cleaning.
- Clean the inner surfaces and shelves with moist cloth and then dry after every evacuation of material.
- Clean the control panel with dry cloth.
- Pay attention the cleaning materials to be hygienic.
- Do not use abrasive cleaning chemicals as these can leave harmful residues.
- Do not clean the appliance by spraying water directly ,otherwise electric motor may get damaged.

➤ **PERIODIC CLEANING AND MAINTENANCE**

- Maintenance should be done by qualified person.
- Get the periodic maintenance of the appliance once in every 15 days.
- Clean the condenser with a plastic rigid brush.
- Clean the fan in periodic times.
- Make periodic maintenance of the fire-extinguisher.



REFRIGERATED COUNTERS WITH DRAWER

F TROUBLESHOOTING

THE APPLIANCE DOESN'T OPERATE	<ol style="list-style-type: none">1. Check if the appliance is plugged in.2. Check the electrical connections and voltage.3. Check if the fuse is on or off.
--------------------------------------	--

THE APPLIANCE IS NOISY	<ol style="list-style-type: none">1. Check the motor.2. If the connection pipes contact with compressor,remove it.
-------------------------------	---

THE APPLIANCE STOPPED	<ol style="list-style-type: none">1. The appliance can stop due to low voltage.In this situation check the voltage.2. If there is any leakage current at electric connections,the appliance stops.In this situation call the authorized service.
------------------------------	---

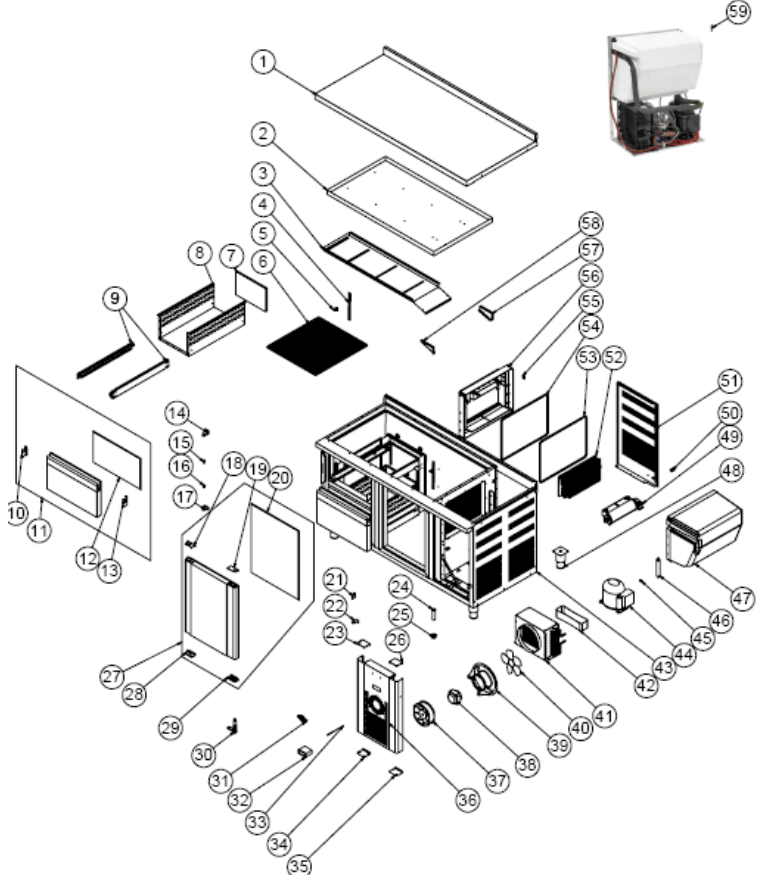
INNER TEMPERATURE IS TOO HIGH	<ol style="list-style-type: none">1. Clean the condenser.2. Check the air conditioning.3. If the hot product is inserted,take it off.4. If the door is opened,close it.
--------------------------------------	--

<ul style="list-style-type: none">• If cooling is not done at suitable quality• If any function of security doesn't work<ul style="list-style-type: none">➤ Do not use the appliance.
--

***If these problems are still going on,contact with our authorized services.**

REFRIGERATED COUNTERS WITH DRAWER

G SPARE PART LIST- EXPLODING DRAWINGS



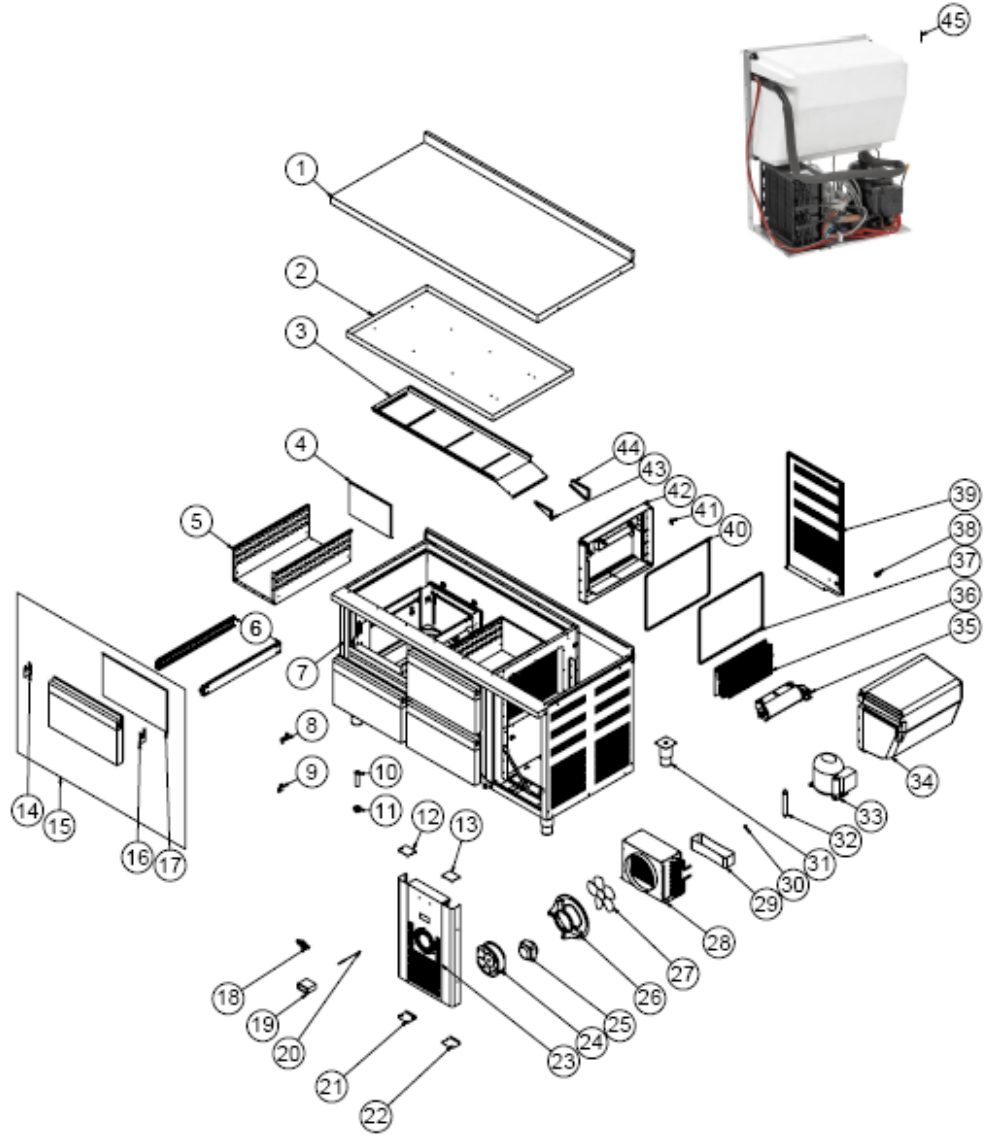
PRODUCT CODE : EMP.150.70.01-2C		
NO	PRODUCT NAME	P. CODE
1	TOP TABLE SHEET	YSC-ERK.1570-LZ-0040
2	UPPER PAN SHEET	YSC-ERK.1570-PN-0291
3	CURTAIN SHEET	YSC-ERK.1560-LZ-0063
4	SHELF STRUT	ERK.M.MUH-002
5	SHELF NAIL	M.RAF-ERK-002
6	49*52 SHELF	M.RAF-ERK-003
7	DRAWER BOILER ADDITIONAL SHEET	YSC-ERK.1570-PN-0192
8	DRAWER BOILER SHEET	YSC-ERK.1570-PN-0191
9	DRAWER SLIDE	ERK.M.MUH-005
10	HAND PLASTIC TOP	M.PLS-ERK-029

REFRIGERATED COUNTERS WITH DRAWER

11	DRAWER COVER	ARA-ERK.CEKMECEKAPAK-430S
12	DRAWER SEAL	M.CNT-ERK-075
13	HAND PLASTIC BOTTOM	M.PLS-ERK-030
14	UPPER RIGHT HINGE SHEET	M.AKS-MNT-SC-001
15	PIN	M.AKS-MNT-SC-005
16	BUSH PLASTIC	M.ENJ-ERK-PLS-022
17	BOTTOM LEFT HINGE SHEET	M.AKS-MNT-SC-002
18	HAND PLASTIC TOP	M.PLS-ERK-029
19	HINGE TOP PLASTIC RIGHT	M.ENJ-ERK-PLS-108
20	GASKET (590 - 472)	M.CNT-ERK-001
21	HOLDER PLASTIC	M.ENJ-ERK-PLS-009
22	HINGE	M.ENJ-ERK-PLS-010
23	TOP PLASTIC LEFT	M.ENJ-ERK-PLS-111
24	PIPE	M.ENJ-ERK-PLS-002
25	NUT	M.ENJ-ERK-PLS-024
26	TOP LEFT PLASTIC	M.PLS-ERK-031
27	COVER RIGHT	ARA-ERK.1560-TEZGAH KAPAK-
28	HAND PLASTIC BOTTOM	M.PLS-ERK-030
29	HINGE BOTTOM PLASTIC RIGHT	M.ENJ-ERK-PLS-107
30	HINGE	M.AKS-MNT-SC-007
31	METAL LABEL	M.AKS-OZL-MTL-002
32	THERMOSTAT	M.ELK-EDM-DGT-043
33	PROP	ERK.M.ELK-EDM-DGT-012
34	BOTTOM PLASTIC LEFT	M.ENJ-ERK-PLS-112
35	BOTTOM LEFT PLASTIC	M.PLS-ERK-032
36	ENGINE DOOR SHEET	YSC-ERK.1560-PN-0128
37	FAN	ERK.M.ELK-HVL-KFN-001
38	FAN MOTOR	M.ELK-MTR-FMT-014
39	FAN CIRCLE PLASTIC	M.ENJ-ERK-PLS-001
40	WING	M.ELK-HVL-FKN-004
41	CONDENSER NEGATIVE	M.SOG-KDS-027
42	TOOLS	M.PLS-ERK-038
43	CHASSIS	-
44	COMPRESSOR	M.SOG-KMS-018
45	SIBO	M.SOG-MUH-001
46	DRAYER	M.SOG-DRY-004
47	INSULATION FOAM	YIZ-ERK.1560-MH-0001
48	FOOT	ERK.M.AKS-AYK-INX-001
49	FAN	ERK.M.ELK-HVL-KFN-003
50	CABLE GLAND	ERK.M.ELK-RKR-PLS-003
51	ENGINE BACK COVER SHEET	YSC-ERK.1560-PN-0122
52	EVAP SMALL POSITIVE (+)	M.SOG-EVP-033
53	OUTER GASKET	M.CNT-ERK-069
54	INTERNAL GASKET	M.CNT-ERK-070
55	CORNER PLASTIC	M.PLS-ERK-027
56	MONOBLOCK PLASTIC	M.PLS-ERK-026
57	CURTAIN RIGHT SIDE SHEET	YSC-ERK.1560-LZ-0064
58	CURTAIN LEFT SIDE SHEET	YSC-ERK.1560-LZ-0065
59	COOLING GROUP	ARA-ERK.1560-0001-AKB

REFRIGERATED COUNTERS WITH DRAWER

G SPARE PART LIST- EXPLODING DRAWINGS



EMP.150.70.01-4C

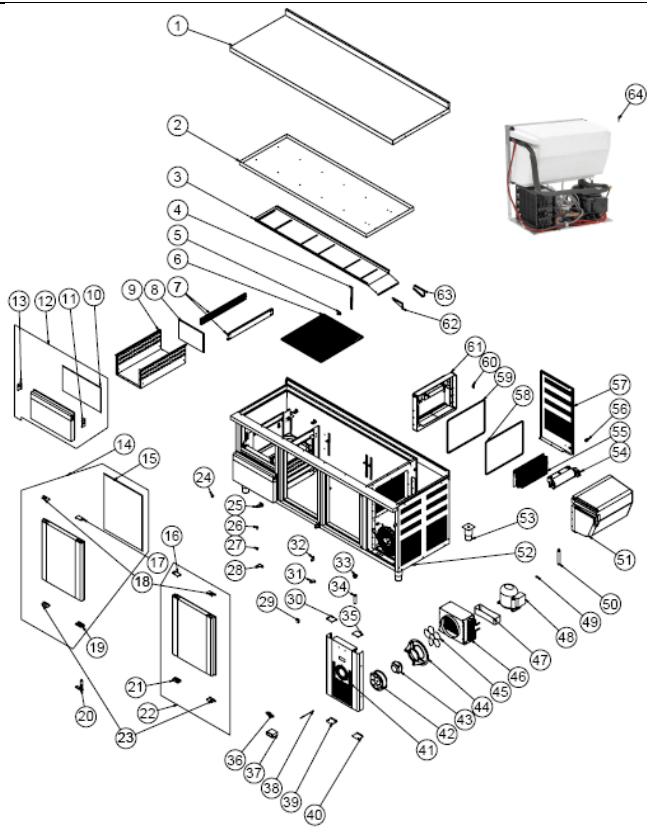
REFRIGERATED COUNTERS WITH DRAWER

G SPARE PART LIST- EXPLODING DRAWINGS

PRODUCT CODE : EMP.150.70.01-4C		
NO	PRODUCT NAME	P. CODE
1	TOP TABLE SHEET	YSC-ERK.1570-LZ-0040
2	UPPER PAN SHEET	YSC-ERK.1570-PN-0291
3	CURTAIN SHEET	YSC-ERK.1560-LZ-0063
4	DRAWER BOILER ADDITIONAL SHEET	YSC-ERK.1570-PN-0192
5	DRAWER BOILER SHEET	YSC-ERK.1570-PN-0191
6	DRAWER SLIDE	ERK.M.MUH-005
7	CHASSIS	-
8	HINGE	M.ENJ-ERK-PLS-010
9	HOLDER PLASTIC	M.ENJ-ERK-PLS-009
10	PIPE	M.ENJ-ERK-PLS-002
11	NUT	M.ENJ-ERK-PLS-024
12	TOP PLASTIC LEFT	M.ENJ-ERK-PLS-111
13	TOP LEFT PLASTIC	M.PLS-ERK-031
14	HAND PLASTIC TOP	M.PLS-ERK-029
15	DRAWER COVER	ARA-ERK.CEKMECEKAPAK-430S
16	HAND PLASTIC BOTTOM	M.PLS-ERK-030
17	DRAWER SEAL	M.CNT-ERK-075
18	METAL LABEL	M.AKS-OZL-MTL-002
19	THERMOSTAT	M.ELK-EDM-DGT-043
20	PROP	ERK.M.ELK-EDM-DGT-012
21	BOTTOM PLASTIC LEFT	M.ENJ-ERK-PLS-112
22	BOTTOM LEFT PLASTIC	M.PLS-ERK-032
23	ENGINE DOOR SHEET	YSC-ERK.1560-PN-0128
24	FAN	ERK.M.ELK-HVL-KFN-001
25	FAN MOTOR	ERK.M.ELK-MTR-FMT-002
26	FAN CIRCLE PLASTIC	M.ENJ-ERK-PLS-001
27	WING	M.ELK-HVL-FKN-004
28	CONDENSER NEGATIVE	M.SOG-KDS-027
29	TOOLS	M.PLS-ERK-038
30	SIBO	M.SOG-MUH-001
31	FOOT	ERK.M.AKS-AYK-INX-001
32	DRAZER	M.SOG-DRY-004
33	COMPRESSOR	M.SOG-KMS-022
34	INSULATION FOAM	YIZ-ERK.1560-MH-0001
35	FAN	ERK.M.ELK-HVL-KFN-003
36	EVAP BIG POSITIVE (+)	M.SOG-EVP-044
37	OUTER GASKET	M.CNT-ERK-069
38	CABLE GLAND	ERK.M.ELK-RKR-PLS-003
39	ENGINE BACK COVER SHEET	YSC-ERK.1560-PN-0122
40	INTERNAL GASKET	M.CNT-ERK-070
41	CORNER PLASTIC	M.PLS-ERK-027
42	MONOBLOCK PLASTIC	M.PLS-ERK-026
43	CURTAIN LEFT SIDE SHEET	YSC-ERK.1560-LZ-0065
44	CURTAIN RIGHT SIDE SHEET	YSC-ERK.1560-LZ-0064
45	COOLING GROUP	ARA-ERK.2560-0001-AKB

REFRIGERATED COUNTERS WITH DRAWER

G SPARE PART LIST- EXPLODING DRAWINGS



PRODUCT CODE : EMP.200.70.01-2C

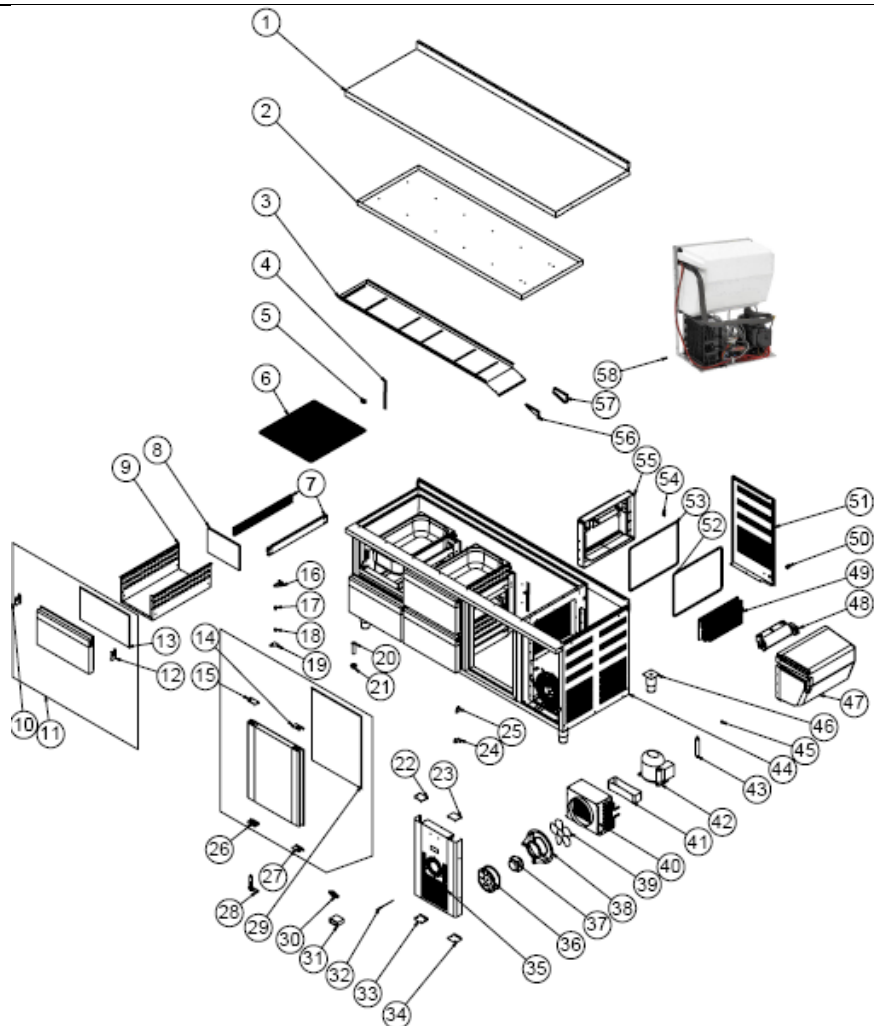
NO	PRODUCT NAME	P. CODE
1	TOP TABLE SHEET	YSC-ERK.2070-LZ-0026
2	UPPER PAN SHEET	YSC-ERK.2070-PN-0129
3	CURTAIN SHEET	YSC-ERK.2060-LZ-0019
4	SHELF STRUT	ERK.M.MUH-002
5	SHELF NAIL	M.RAF-ERK-002
6	49*52 SHELF	M.RAF-ERK-003
7	DRAWER SLIDE	ERK.M.MUH-005
8	DRAWER BOILER ADDITIONAL SHEET	YSC-ERK.1570-PN-0192
9	DRAWER BOILER SHEET	YSC-ERK.1570-PN-0191
10	DRAWER SEAL	M.CNT-ERK-075
11	HAND PLASTIC BOTTOM	M.PLS-ERK-030
12	DRAWER COVER	ARA-ERK.CEKMECEKAPAK-430S
13	HAND PLASTIC TOP	M.PLS-ERK-029

REFRIGERATED COUNTERS WITH DRAWER

14	COVER RIGHT	ARA-ERK.1560-TEZGAH KAPAK-
15	GASKET (590 - 472)	M.CNT-ERK-001
16	HINGE TOP PLASTIC LEFT	M.ENJ-ERK-PLS-110
17	HINGE TOP PLASTIC RIGHT	M.ENJ-ERK-PLS-108
18	HAND PLASTIC TOP	M.PLS-ERK-029
19	HINGE BOTTOM PLASTIC RIGHT	M.ENJ-ERK-PLS-107
20	HINGE	M.AKS-MNT-SC-007
21	HINGE BOTTOM PLASTIC LEFT	M.ENJ-ERK-PLS-109
22	COVER LEFT	ARA-ERK.1560-AKB TEZGAH
23	HAND PLASTIC BOTTOM	M.PLS-ERK-030
24	MAGNET	M.MIK-SRT-ERK-001
25	UPPER RIGHT HINGE SHEET	M.AKS-MNT-SC-001
26	PIN	M.AKS-MNT-SC-005
27	BUSH PLASTIC	M.ENJ-ERK-PLS-022
28	BOTTOM LEFT HINGE SHEET	M.AKS-MNT-SC-002
29	HOUSING PLASTIC	M.PLS-ERK-002
30	TOP PLASTIC LEFT	M.ENJ-ERK-PLS-111
31	HINGE	M.ENJ-ERK-PLS-010
32	HOLDER PLASTIC	M.ENJ-ERK-PLS-009
33	NUT	M.ENJ-ERK-PLS-024
34	PIPE	M.ENJ-ERK-PLS-002
35	TOP LEFT PLASTIC	M.PLS-ERK-031
36	METAL LABEL	M.AKS-OZL-MTL-002
37	THERMOSTAT	M.ELK-EDM-DGT-043
38	PROP	ERK.M.ELK-EDM-DGT-012
39	BOTTOM PLASTIC LEFT	M.ENJ-ERK-PLS-112
40	BOTTOM LEFT PLASTIC	M.PLS-ERK-032
41	ENGINE DOOR SHEET	YSC-ERK.1560-PN-0128
42	FAN	ERK.M.ELK-HVL-KFN-001
43	FAN MOTOR	M.ELK-MTR-FMT-014
44	FAN CIRCLE PLASTIC	M.ENJ-ERK-PLS-001
45	WING	M.ELK-HVL-FKN-004
46	CONDENSER NEGATIVE	M.SOG-KDS-027
47	TOOLS	M.PLS-ERK-038
48	COMPRESSOR	M.SOG-KMS-018
49	SIBO	M.SOG-MUH-001
50	DRAYER	M.SOG-DRY-004
51	INSULATION FOAM	YIZ-ERK.1560-MH-0001
52	CLASSIC	
53	FOOT	ERK.M.AKS-AYK-INX-001
54	FAN	ERK.M.ELK-HVL-KFN-003
55	EVAP SMALL POSITIVE (+)	M.SOG-EVP-033
56	CABLE GLAND	ERK.M.ELK-RKR-PLS-003
57	ENGINE BACK COVER SHEET	YSC-ERK.1560-PN-0122
58	OUTER GASKET	M.CNT-ERK-069
59	INTERNAL GASKET	M.CNT-ERK-070
60	CORNER PLASTIC	M.PLS-ERK-027
61	MONOBLOCK PLASTIC	M.PLS-ERK-026
62	CURTAIN LEFT SIDE SHEET	YSC-ERK.1560-LZ-0065
63	CURTAIN RIGHT SIDE SHEET	YSC-ERK.1560-LZ-0064
64	COOLING GROUP	ARA-ERK.2060-0001-AKB

REFRIGERATED COUNTERS WITH DRAWER

G SPARE PART LIST- EXPLODING DRAWINGS



PRODUCT CODE : EMP.200.70.01-4C

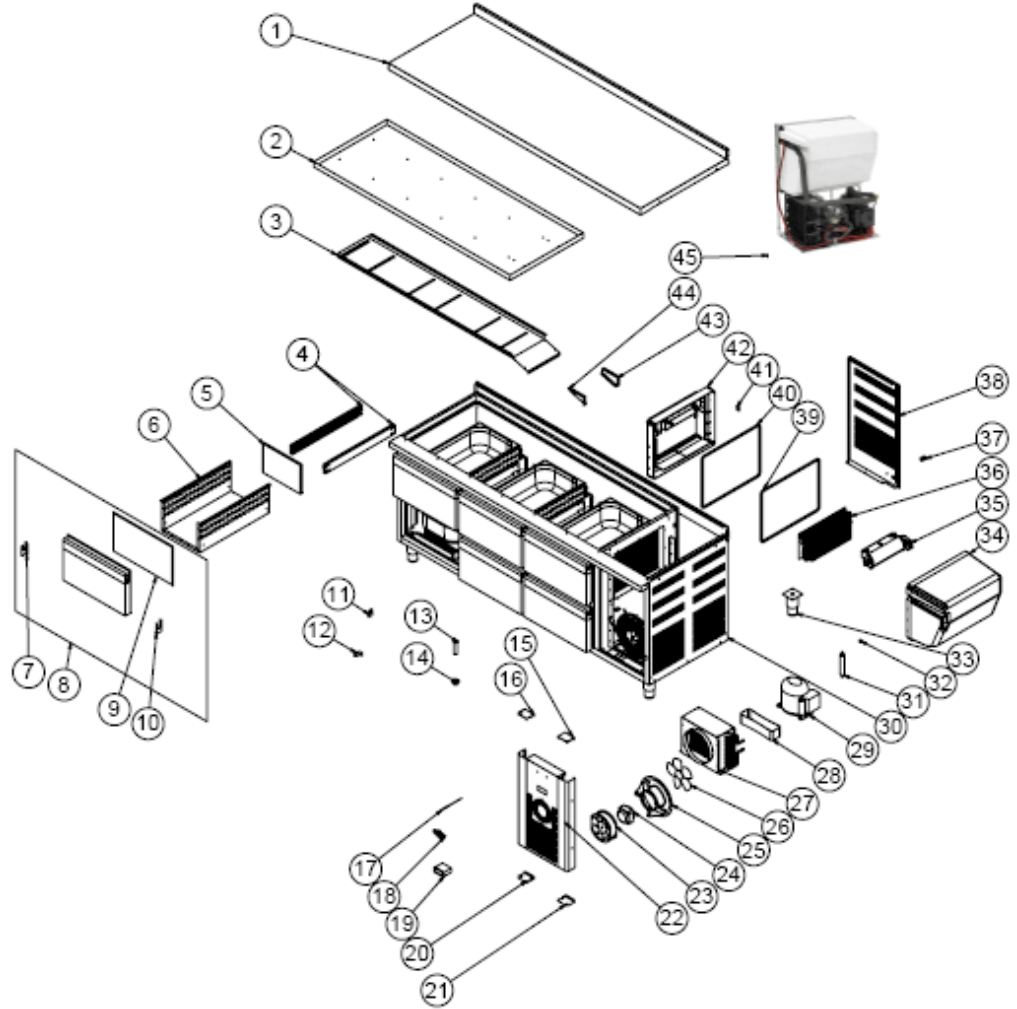
NO	PRODUCT NAME	P. CODE
1	TOP TABLE SHEET	YSC-ERK.2070-LZ-0026
2	UPPER PAN SHEET	YSC-ERK.2070-PN-0129
3	CURTAIN SHEET	YSC-ERK.2060-LZ-0019
4	SHELF STRUT	ERK.M.MUH-002
5	SHELF NAIL	M.RAF-ERK-002

REFRIGERATED COUNTERS WITH DRAWER

6	49*52 SHELF	M.RAF-ERK-003
7	DRAWER SLIDE	ERK.M.MUH-005
8	DRAWER BOILER ADDITIONAL SHEET	YSC-ERK.1570-PN-0192
9	DRAWER BOILER SHEET	YSC-ERK.1570-PN-0191
10	HAND PLASTIC TOP	M.PLS-ERK-029
11	DRAWER COVER	ARA-ERK.CEKMECEKAPAK-430S
12	HAND PLASTIC BOTTOM	M.PLS-ERK-030
13	DRAWER SEAL	M.CNT-ERK-075
14	HAND PLASTIC TOP	M.PLS-ERK-029
15	HINGE TOP PLASTIC LEFT	M.ENJ-ERK-PLS-110
16	UPPER RIGHT HINGE SHEET	M.AKS-MNT-SC-001
17	PIN	M.AKS-MNT-SC-005
18	BUSH PLASTIC	M.ENJ-ERK-PLS-022
19	BOTTOM LEFT HINGE SHEET	M.AKS-MNT-SC-002
20	PIPE	M.ENJ-ERK-PLS-002
21	NUT	M.ENJ-ERK-PLS-024
22	TOP PLASTIC LEFT	M.ENJ-ERK-PLS-111
23	TOP LEFT PLASTIC	M.PLS-ERK-031
24	HINGE	M.ENJ-ERK-PLS-010
25	HOLDER PLASTIC	M.ENJ-ERK-PLS-009
26	HINGE BOTTOM PLASTIC LEFT	M.ENJ-ERK-PLS-109
27	HAND PLASTIC BOTTOM	M.PLS-ERK-030
28	HINGE	M.AKS-MNT-SC-007
29	GASKET (590 - 472)	M.CNT-ERK-001
30	METAL LABEL	M.AKS-OZL-MTL-002
31	THERMOSTAT	M.ELK-EDM-DGT-043
32	PROP	ERK.M.ELK-EDM-DGT-012
33	BOTTOM PLASTIC LEFT	M.ENJ-ERK-PLS-112
34	BOTTOM LEFT PLASTIC	M.PLS-ERK-032
35	ENGINE DOOR SHEET	YSC-ERK.1560-PN-0128
36	FAN	ERK.M.ELK-HVL-KFN-001
37	FAN MOTOR	ERK.M.ELK-MTR-FMT-002
38	FAN CIRCLE PLASTIC	M.ENJ-ERK-PLS-001
39	WING	M.ELK-HVL-FKN-004
40	CONDENSER NEGATIVE	M.SOG-KDS-027
41	TOOLS	M.PLS-ERK-038
42	COMPRESSOR	M.SOG-KMS-022
43	DRAYER	M.SOG-DRY-004
44	CHASSIS	-
45	SJBO	M.SOG-MUH-001
46	FOOT	ERK.M.AKS-AYK-INX-001
47	INSULATION FOAM	YIZ-ERK.1560-MH-0001
48	FAN	ERK.M.ELK-HVL-KFN-003
49	EVAP BIG POSITIVE (+)	M.SOG-EVP-044
50	CABLE GLAND	ERK.M.ELK-RKR-PLS-003
51	ENGINE BACK COVER SHEET	YSC-ERK.1560-PN-0122
52	OUTER GASKET	M.CNT-ERK-069
53	INTERNAL GASKET	M.CNT-ERK-070
54	CORNER PLASTIC	M.PLS-ERK-027
55	MONOBLOCK PLASTIC	M.PLS-ERK-026
56	CURTAIN LEFT SIDE SHEET	YSC-ERK.1560-LZ-0065
57	CURTAIN RIGHT SIDE SHEET	YSC-ERK.1560-LZ-0064
58	COOLING GROUP	ARA-ERK.2560-0001-AKB

REFRIGERATED COUNTERS WITH DRAWER

G SPARE PART LIST- EXPLODING DRAWINGS



EMP.200.70.01-6C

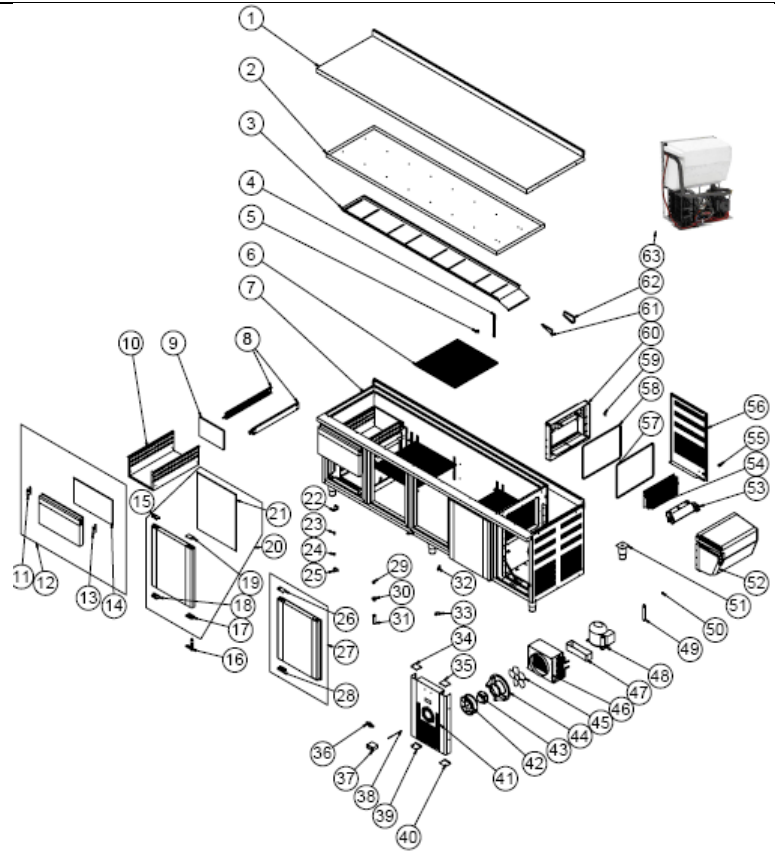
REFRIGERATED COUNTERS WITH DRAWER

G SPARE PART LIST- EXPLODING DRAWINGS

PRODUCT CODE : EMP.200.70.01-6C		
NO	PRODUCT NAME	P. CODE
1	TOP TABLE SHEET	YSC-ERK.2070-LZ-0026
2	UPPER PAN SHEET	YSC-ERK.2070-PN-0129
3	CURTAIN SHEET	YSC-ERK.2060-LZ-0019
4	DRAWER SLIDE	ERK.M.MUH-005
5	DRAWER BOILER ADDITIONAL SHEET	YSC-ERK.1570-PN-0192
6	DRAWER BOILER SHEET	YSC-ERK.1570-PN-0191
7	HAND PLASTIC TOP	M.PLS-ERK-029
8	DRAWER COVER	ARA-ERK.CEKMECEKAPAK-430S
9	DRAWER SEAL	M.CNT-ERK-075
10	HAND PLASTIC BOTTOM	M.PLS-ERK-030
11	HOLDER PLASTIC	M.ENJ-ERK-PLS-009
12	HINGE	M.ENJ-ERK-PLS-010
13	PIPE	M.ENJ-ERK-PLS-002
14	NUT	M.ENJ-ERK-PLS-024
15	TOP LEFT PLASTIC	M.PLS-ERK-031
16	TOP PLASTIC LEFT	M.ENJ-ERK-PLS-111
17	PROP	ERK.M.ELK-EDM-DGT-012
18	METAL LABEL	M.AKS-OZL-MTL-002
19	THERMOSTAT	M.ELK-EDM-DGT-043
20	BOTTOM PLASTIC LEFT	M.ENJ-ERK-PLS-112
21	BOTTOM LEFT PLASTIC	M.PLS-ERK-032
22	ENGINE DOOR SHEET	YSC-ERK.1560-PN-0128
23	FAN	ERK.M.ELK-HVL-KFN-001
24	FAN MOTOR	ERK.M.ELK-MTR-FMT-002
25	FAN CIRCLE PLASTIC	M.ENJ-ERK-PLS-001
26	WING	M.ELK-HVL-FKN-004
27	CONDENSER NEGATIVE	M.SOG-KDS-027
28	TOOLS	M.PLS-ERK-038
29	COMPRESSOR	M.SOG-KMS-022
30	CHASSIS	-
31	DRAYER	M.SOG-DRY-004
32	SIBO	M.SOG-MUH-001
33	FOOT	ERK.M.AKS-AYK-INX-001
34	INSULATION FOAM	YIZ-ERK.1560-MH-0001
35	FAN	ERK.M.ELK-HVL-KFN-003
36	EVAP BIG POSITIVE (+)	M.SOG-EVP-044
37	CABLE GLAND	ERK.M.ELK-RKR-PLS-003
38	ENGINE BACK COVER SHEET	YSC-ERK.1560-PN-0122
39	OUTER GASKET	M.CNT-ERK-069
40	INTERNAL GASKET	M.CNT-ERK-070
41	CORNER PLASTIC	M.PLS-ERK-027
42	MONOBLOCK PLASTIC	M.PLS-ERK-026
43	CURTAIN RIGHT SIDE SHEET	YSC-ERK.1560-LZ-0064
44	CURTAIN LEFT SIDE SHEET	YSC-ERK.1560-LZ-0065
45	COOLING GROUP	ARA-ERK.2560-0001-AKB

REFRIGERATED COUNTERS WITH DRAWER

G SPARE PART LIST- EXPLODING DRAWINGS



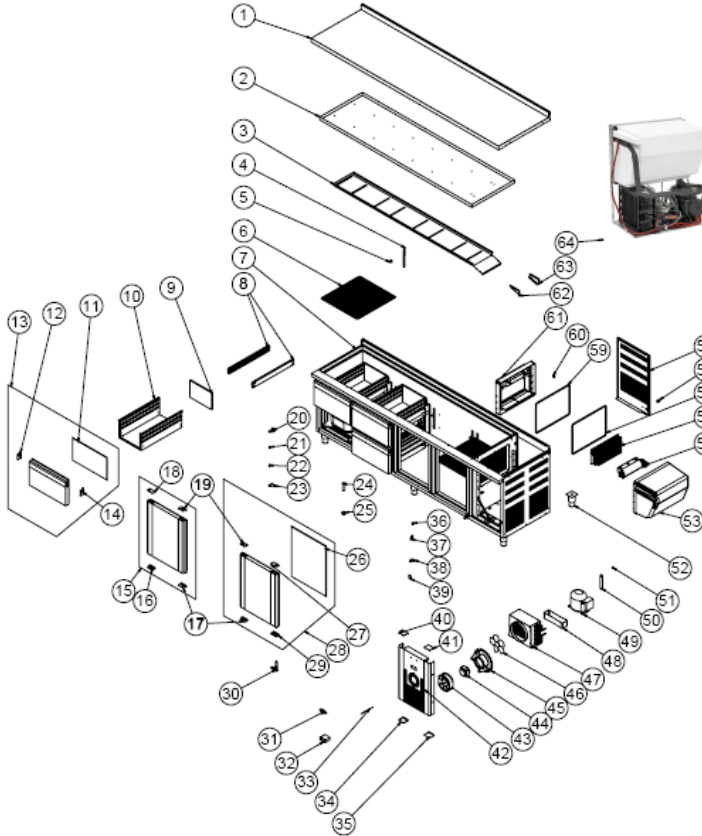
PRODUCT CODE : EMP.255.70.01-2C		
NO	PRODUCT NAME	P. CODE
1	TOP TABLE SHEET	YSC-ERK.2570-LZ-0007
2	UPPER PAN SHEET	YSC-ERK.2570-PN-0042
3	CURTAIN SHEET	YSC-ERK.2560-LZ-0028
4	SHELF STRUT	ERK.M.MUH-002
5	SHELF NAIL	M.RAF-ERK-002
6	49*52 SHELF	M.RAF-ERK-003
7	CHASSIS	-
8	DRAWER SLIDE	ERK.M.MUH-005
9	DRAWER BOILER ADDITIONAL SHEET	YSC-ERK.1570-PN-0192
10	DRAWER BOILER SHEET	YSC-ERK.1570-PN-0191
11	HAND PLASTIC TOP	M.PLS-ERK-029
12	DRAWER COVER	ARA-ERK.CEKMECEKAPAK-430S

REFRIGERATED COUNTERS WITH DRAWER

13	HAND PLASTIC BOTTOM	M.PLS-ERK-030
14	DRAWER SEAL	M.CNT-ERK-075
15	HAND PLASTIC TOP	M.PLS-ERK-029
16	HINGE	M.AKS-MNT-SC-007
17	HINGE BOTTOM PLASTIC RIGHT	M.ENJ-ERK-PLS-107
18	HAND PLASTIC BOTTOM	M.PLS-ERK-030
19	HINGE TOP PLASTIC RIGHT	M.ENJ-ERK-PLS-108
20	COVER RIGHT	ARA-ERK.1560-TEZGAH KAPAK-
21	GASKET (590 - 472)	M.CNT-ERK-001
22	UPPER RIGHT HINGE SHEET	M.AKS-MNT-SC-001
23	PIN	M.AKS-MNT-SC-005
24	BUSH PLASTIC	M.ENJ-ERK-PLS-022
25	BOTTOM LEFT HINGE SHEET	M.AKS-MNT-SC-002
26	HINGE TOP PLASTIC LEFT	M.ENJ-ERK-PLS-110
27	COVER LEFT	ARA-ERK.1560-AKB TEZGAH
28	HINGE BOTTOM PLASTIC LEFT	M.ENJ-ERK-PLS-109
29	MAGNET	M.MIK-SRT-ERK-001
30	NUT	M.ENJ-ERK-PLS-024
31	PIPE	M.ENJ-ERK-PLS-002
32	HOLDER PLASTIC	M.ENJ-ERK-PLS-009
33	HINGE	M.ENJ-ERK-PLS-010
34	TOP PLASTIC LEFT	M.ENJ-ERK-PLS-111
35	TOP LEFT PLASTIC	M.PLS-ERK-031
36	METAL LABEL	M.AKS-OZL-MTL-002
37	THERMOSTAT	M.ELK-EDM-DGT-043
38	PROP	ERK.M.ELK-EDM-DGT-012
39	BOTTOM PLASTIC LEFT	M.ENJ-ERK-PLS-112
40	BOTTOM LEFT PLASTIC	M.PLS-ERK-032
41	ENGINE DOOR SHEET	YSC-ERK.2560-PN-0066
42	FAN	ERK.M.ELK-HVL-KFN-001
43	FAN MOTOR	ERK.M.ELK-MTR-FMT-002
44	FAN CIRCLE PLASTIC	M.ENJ-ERK-PLS-001
45	WING	M.ELK-HVL-FKN-004
46	CONDENSER NEGATIVE	M.SOG-KDS-027
47	TOOLS	M.PLS-ERK-038
48	COMPRESSOR	M.SOG-KMS-022
49	DRAYER	M.SOG-DRY-004
50	SIBO	M.SOG-MUH-001
51	FOOT	ERK.M.AKS-AYK-INX-001
52	INSULATION FOAM	YIZ-ERK.1560-MH-0001
53	FAN	ERK.M.ELK-HVL-KFN-003
54	EVAP BIG POSITIVE (+)	M.SOG-EVP-044
55	CABLE GLAND	ERK.M.ELK-RKR-PLS-003
56	ENGINE BACK COVER SHEET	YSC-ERK.2560-PN-0068
57	OUTER GASKET	M.CNT-ERK-069
58	INTERNAL GASKET	M.CNT-ERK-070
59	CORNER PLASTIC	M.PLS-ERK-027
60	MONOBLOCK PLASTIC	M.PLS-ERK-026
61	CURTAIN LEFT SIDE SHEET	YSC-ERK.1560-LZ-0065
62	CURTAIN RIGHT SIDE SHEET	YSC-ERK.1560-LZ-0064
63	COOLING GROUP	ARA-ERK.2560-0001-AKB

REFRIGERATED COUNTERS WITH DRAWER

G SPARE PART LIST- EXPLODING DRAWINGS



PRODUCT CODE : EMP.255.70.01-4C		
NO	PRODUCT NAME	P. CODE
1	TOP TABLE SHEET	YSC-ERK.2570-LZ-0007
2	UPPER PAN SHEET	YSC-ERK.2570-PN-0042
3	CURTAIN SHEET	YSC-ERK.2560-LZ-0028
4	SHELF STRUT	ERK.M.MUH-002
5	SHELF NAIL	M.RAF-ERK-002
6	49*52 SHELF	M.RAF-ERK-003
7	CHASSIS	-
8	DRAWER SLIDE	ERK.M.MUH-005
9	DRAWER BOILER ADDITIONAL SHEET	YSC-ERK.1570-PN-0192
10	DRAWER BOILER SHEET	YSC-ERK.1570-PN-0191
11	DRAWER SEAL	M.CNT-ERK-075
12	HAND PLASTIC TOP	M.PLS-ERK-029

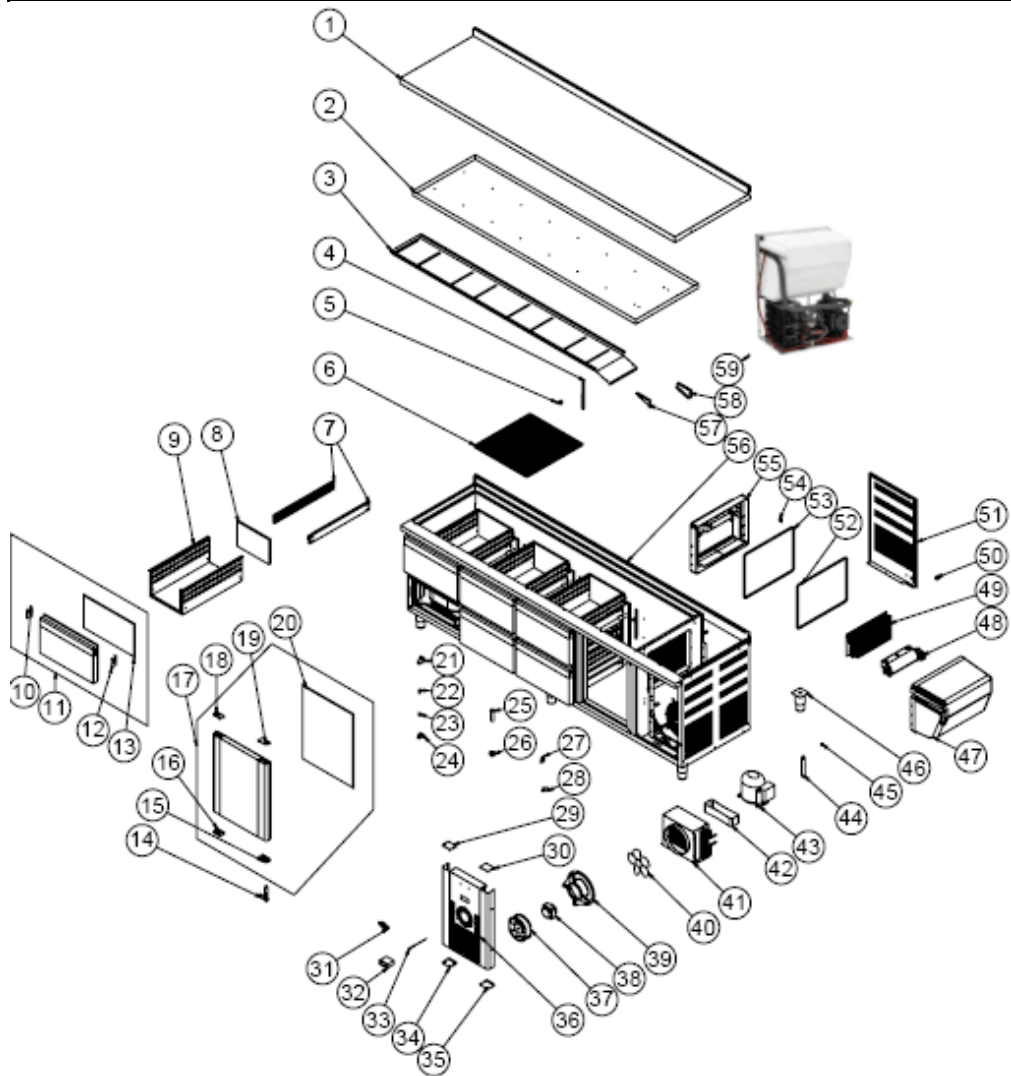
REFRIGERATED COUNTERS WITH DRAWER

13	DRAWER COVER	ARA-ERK.CEKMECEKAPAK-4305
14	HAND PLASTIC BOTTOM	M.PLS-ERK-030
15	COVER LEFT	ARA-ERK.1560-AKB TEZGAH
16	HINGE BOTTOM PLASTIC LEFT	M.ENJ-ERK-PLS-109
17	HAND PLASTIC BOTTOM	M.PLS-ERK-030
18	HINGE TOP PLASTIC LEFT	M.ENJ-ERK-PLS-110
19	HAND PLASTIC TOP	M.PLS-ERK-029
20	UPPER RIGHT HINGE SHEET	M.AKS-MNT-SC-001
21	BOTTOM LEFT HINGE SHEET	M.AKS-MNT-SC-002
22	BUSH PLASTIC	M.ENJ-ERK-PLS-022
23	PIN	M.AKS-MNT-SC-005
24	PIPE	M.ENJ-ERK-PLS-002
25	NUT	M.ENJ-ERK-PLS-024
26	GASKET (590 - 472)	M.CNT-ERK-001
27	HINGE TOP PLASTIC RIGHT	M.ENJ-ERK-PLS-108
28	COVER RIGHT	ARA-ERK.1560-TEZGAH KAPAK-
29	HINGE BOTTOM PLASTIC RIGHT	M.ENJ-ERK-PLS-107
30	HINGE	M.AKS-MNT-SC-007
31	METAL LABEL	M.AKS-OZL-MTL-002
32	THERMOSTAT	M.ELK-EDM-DGT-043
33	PROP	ERK.M.ELK-EDM-DGT-012
34	BOTTOM PLASTIC LEFT	M.ENJ-ERK-PLS-112
35	BOTTOM LEFT PLASTIC	M.PLS-ERK-032
36	MAGNET	M.MIK-SRT-ERK-001
37	HOLDER PLASTIC	M.ENJ-ERK-PLS-009
38	HINGE	M.ENJ-ERK-PLS-010
39	HOUSING PLASTIC	M.PLS-ERK-002
40	TOP PLASTIC LEFT	M.ENJ-ERK-PLS-111
41	TOP LEFT PLASTIC	M.PLS-ERK-031
42	ENGINE DOOR SHEET	YSC-ERK.2560-PN-0066
43	FAN	ERK.M.ELK-HVL-KFN-001
44	FAN MOTOR	ERK.M.ELK-MTR-FMT-002
45	FAN CIRCLE PLASTIC	M.ENJ-ERK-PLS-001
46	WING	M.ELK-HVL-FKN-004
47	CONDENSER NEGATIVE	M.SOG-KDS-027
48	TOOLS	M.PLS-ERK-038
49	COMPRESSOR	M.SOG-KMS-022
50	DRAYER	M.SOG-DRY-004
51	SIBO	M.SOG-MUH-001
52	FOOT	ERK.M.AKS-AYK-INX-001
53	INSULATION FOAM	YIZ-ERK.1560-MH-0001
54	FAN	ERK.M.ELK-HVL-KFN-003
55	EVAP BIG POSITIVE (+)	M.SOG-EVP-044
56	OUTER GASKET	M.CNT-ERK-069
57	CABLE GLAND	ERK.M.ELK-RKR-PLS-003
58	ENGINE BACK COVER SHEET	YSC-ERK.2560-PN-0068
59	INTERNAL GASKET	M.CNT-ERK-070
60	CORNER PLASTIC	M.PLS-ERK-027
61	MONOBLOCK PLASTIC	M.PLS-ERK-026
62	CURTAIN LEFT SIDE SHEET	YSC-ERK.1560-LZ-0065

REFRIGERATED COUNTERS WITH DRAWER

63	CURTAIN RIGHT SIDE SHEET	YSC-ERK.1560-LZ-0064
64	COOLING GROUP	ARA-ERK.2560-0001-AKB

G SPARE PART LIST- EXPLODING DRAWINGS



EMP.255.70.01-6C

REFRIGERATED COUNTERS WITH DRAWER

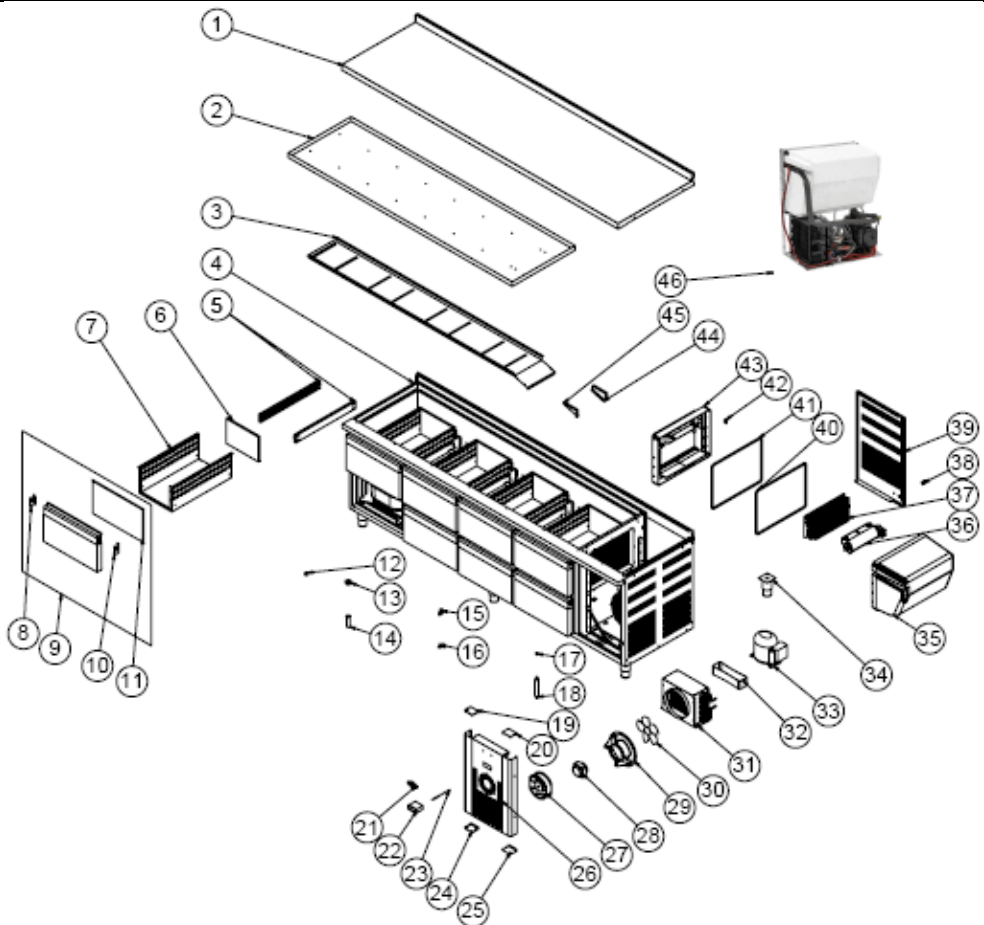
G SPARE PART LIST- EXPLODING DRAWINGS

PRODUCT CODE : EMP.255.70.01-6C		
NO	PRODUCT NAME	P. CODE
1	TOP TABLE SHEET	YSC-ERK.2570-LZ-0007
2	UPPER PAN SHEET	YSC-ERK.2570-PN-0042
3	CURTAIN SHEET	YSC-ERK.2560-LZ-0028
4	SHELF STRUT	ERK.M.MUH-002
5	SHELF NAIL	M.RAF-ERK-002
6	49*52 SHELF	M.RAF-ERK-003
7	DRAWER SLIDE	ERK.M.MUH-005
8	DRAWER BOILER ADDITIONAL SHEET	YSC-ERK.1570-PN-0192
9	DRAWER BOILER SHEET	YSC-ERK.1570-PN-0191
10	HAND PLASTIC TOP	M.PLS-ERK-029
11	DRAWER COVER	ARA-ERK.CEKMECEKAPAK-430S
12	HAND PLASTIC BOTTOM	M.PLS-ERK-030
13	DRAWER SEAL	M.CNT-ERK-075
14	HINGE	M.AKS-MNT-SC-007
15	HINGE BOTTOM PLASTIC RIGHT	M.ENJ-ERK-PLS-107
16	HAND PLASTIC BOTTOM	M.PLS-ERK-030
17	COVER RIGHT	ARA-ERK.1560-TEZGAH KAPAK-
18	HAND PLASTIC TOP	M.PLS-ERK-029
19	HINGE TOP PLASTIC RIGHT	M.ENJ-ERK-PLS-108
20	GASKET (590 - 472)	M.CNT-ERK-001
21	UPPER RIGHT HINGE SHEET	M.AKS-MNT-SC-001
22	PIN	M.AKS-MNT-SC-005
23	BOTTOM LEFT HINGE SHEET	M.AKS-MNT-SC-002
24	BUSH PLASTIC	M.ENJ-ERK-PLS-022
25	PIPE	M.ENJ-ERK-PLS-002
26	NUT	M.ENJ-ERK-PLS-024
27	HOLDER PLASTIC	M.ENJ-ERK-PLS-009
28	HINGE	M.ENJ-ERK-PLS-010
29	TOP PLASTIC LEFT	M.ENJ-ERK-PLS-111
30	TOP LEFT PLASTIC	M.PLS-ERK-031
31	METAL LABEL	M.AKS-OZL-MTL-002
32	THERMOSTAT	M.ELK-EDM-DGT-043
33	PROP	ERK.M.ELK-EDM-DGT-012
34	BOTTOM PLASTIC LEFT	M.ENJ-ERK-PLS-112
35	BOTTOM LEFT PLASTIC	M.PLS-ERK-032
36	ENGINE DOOR SHEET	YSC-ERK.2560-PN-0066
37	FAN	ERK.M.ELK-HVL-KFN-001
38	FAN MOTOR	ERK.M.ELK-MTR-FMT-002
39	FAN CIRCLE PLASTIC	M.ENJ-ERK-PLS-001
40	WING	M.ELK-HVL-FKN-004
41	CONDENSER NEGATIVE	M.SOG-KDS-027
42	TOOLS	M.PLS-ERK-038
43	COMPRESSOR	M.SOG-KMS-022
44	DRAYER	M.SOG-DRY-004
45	SIBO	M.SOG-MUH-001
46	FOOT	ERK.M.AKS-AYK-INX-001
47	INSULATION FOAM	YIZ-ERK.1560-MH-0001
48	FAN	ERK.M.ELK-HVL-KFN-003
49	EVAP BIG POSITIVE (+)	M.SOG-EVP-044
50	CABLE GLAND	ERK.M.ELK-RKR-PLS-003

REFRIGERATED COUNTERS WITH DRAWER

51	ENGINE BACK COVER SHEET	YSC-ERK.2560-PN-0068
52	OUTER GASKET	M.CNT-ERK-069
53	INTERNAL GASKET	M.CNT-ERK-070
54	CORNER PLASTIC	M.PLS-ERK-027
55	MONOBLOCK PLASTIC	M.PLS-ERK-026
56	CHASSIS	-
57	CURTAIN LEFT SIDE SHEET	YSC-ERK.1560-LZ-0065
58	CURTAIN RIGHT SIDE SHEET	YSC-ERK.1560-LZ-0064
59	COOLING GROUP	ARA-ERK.2560-0001-AKB

G SPARE PART LIST- EXPLODING DRAWINGS



EMP.255.70.01-8C

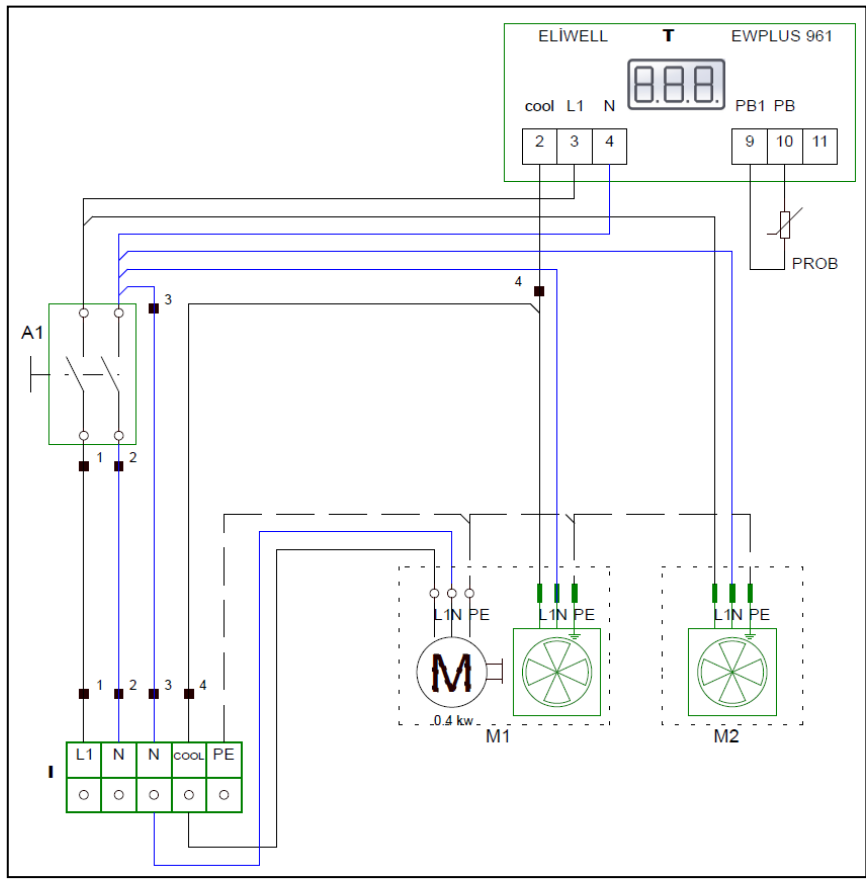
REFRIGERATED COUNTERS WITH DRAWER

G SPARE PART LIST- EXPLODING DRAWINGS

PRODUCT CODE : EMP.255.70.01-8C		
NO	PRODUCT NAME	P. CODE
1	TOP TABLE SHEET	YSC-ERK.2570-LZ-0007
2	UPPER PAN SHEET	YSC-ERK.2570-PN-0042
3	CURTAIN SHEET	YSC-ERK.2560-LZ-0028
4	CHASSIS	-
5	DRAWER SLIDE	ERK.M.MUH-005
6	DRAWER BOILER ADDITIONAL SHEET	YSC-ERK.1570-PN-0192
7	DRAWER BOILER SHEET	YSC-ERK.1570-PN-0191
8	HAND PLASTIC TOP	M.PLS-ERK-029
9	DRAWER COVER	ARA-ERK.CEKMECEKAPAK-430S
10	HAND PLASTIC BOTTOM	M.PLS-ERK-030
11	DRAWER SEAL	M.CNT-ERK-075
12	MAGNET	M.MIK-SRT-ERK-001
13	NUT	M.ENJ-ERK-PLS-024
14	PIPE	M.ENJ-ERK-PLS-002
15	HOLDER PLASTIC	M.ENJ-ERK-PLS-009
16	HINGE	M.ENJ-ERK-PLS-010
17	SIBO	M.SOG-MUH-001
18	DRAWER	M.SOG-DRY-004
19	TOP PLASTIC LEFT	M.ENJ-ERK-PLS-111
20	TOP LEFT PLASTIC	M.PLS-ERK-031
21	METAL LABEL	M.AKS-OZL-MTL-002
22	THERMOSTAT	M.ELK-EDM-DGT-043
23	PROP	ERK.M.ELK-EDM-DGT-012
24	BOTTOM PLASTIC LEFT	M.ENJ-ERK-PLS-112
25	BOTTOM LEFT PLASTIC	M.PLS-ERK-032
26	ENGINE DOOR SHEET	YSC-ERK.2560-PN-0066
27	FAN	ERK.M.ELK-HVL-KFN-001
28	FAN MOTOR	ERK.M.ELK-MTR-FMT-002
29	FAN CIRCLE PLASTIC	M.ENJ-ERK-PLS-001
30	WING	M.ELK-HVL-FKN-004
31	CONDENSER NEGATIVE	M.SOG-KDS-027
32	TOOLS	M.PLS-ERK-038
33	COMPRESSOR	M.SOG-KMS-022
34	FOOT	ERK.M.AKS-AYK-INX-001
35	INSULATION FOAM	YIZ-ERK.1560-MH-0001
36	FAN	ERK.M.ELK-HVL-KFN-003
37	EVAP BIG POSITIVE (+)	M.SOG-EVP-044
38	CABLE GLAND	ERK.M.ELK-RKR-PLS-003
39	ENGINE BACK COVER SHEET	YSC-ERK.2560-PN-0068
40	OUTER GASKET	M.CNT-ERK-069
41	INTERNAL GASKET	M.CNT-ERK-070
42	CORNER PLASTIC	M.PLS-ERK-027
43	MONOBLOCK PLASTIC	M.PLS-ERK-026
44	CURTAIN RIGHT SIDE SHEET	YSC-ERK.1560-LZ-0064
45	CURTAIN LEFT SIDE SHEET	YSC-ERK.1560-LZ-0065
46	COOLING GROUP	ARA-ERK.2560-0001-AKB

REFRIGERATED COUNTERS WITH DRAWER

H ELECTRIC CIRCUIT SCHEMA



I	A1	T	M1	M2
Terminal	Large lighted 0-1 switch	Digital Indicator	Compressor and condenser fan	Refrigerator inner cooling fan