



STOVE TOP SALADBARS

CONTENTS

A	GENERAL INFORMATION	Page 2
A1	DESCRIPTION	Page 3
A2	TECHNICAL INFORMATION	Page 3
A3	TRANSPORT	Page 4
A4	PACKAGE	Page 4
B	ASSEMBLY	Page4
C	GENERAL WARNINGS	Page 5
D	USING THE DEVICE	Page 6
E	CLEANING and MAINTENANCE	Page 7
F	TROUBLESHOOTING	Page 8
G	SPARE PARTS LIST - DISASSEMBLED VIEW	Page 9
H	ELECTRICAL CIRCUIT DIAGRAM	Page 11

A GENERAL INFORMATION

PLEASE READ THE OPERATING AND MAINTENANCE INSTRUCTIONS CAREFULLY BEFORE INSTALLING THIS DEVICE. IMPROPER INSTALLATION AND REPLACEMENT OF PARTS MAY DAMAGE THE PRODUCT OR CAUSE INJURY TO PERSONS. OUR COMPANY IS NOT RESPONSIBLE FOR INTENTIONAL DAMAGE TO THE DEVICE, DAMAGES CAUSED BY NEGLIGENCE, FAILURE TO COMPLY WITH THE INSTRUCTIONS AND REGULATIONS, OR INCORRECT CONNECTIONS. UNAUTHORIZED INTERFERENCE WITH THE DEVICE WILL VOID THE PRODUCT WARRANTY.

1. Keep this booklet handy in a safe place for future reference to other operators.
2. **The installation of the device must be carried out by authorized personnel in accordance with the current regulations and instructions in the country where it will be used.**
3. This device must be used by trained persons.
4. In case of device malfunction, turn off the device. Only a service center authorized by the manufacturer should service the device. Ask for original spare parts.



STOVE TOP SALADBARS

A1 IDENTIFICATION

*This high-efficiency device is a professional countertop salad bar produced for use in industrial kitchens.

Code	Dimensions (mm)	Weight (kg)	Packaging Dimensions (mm)
EMP.160	1600x350x500	65	1740x550x700
EMP.210	2100x350x500	78	2140x550x700

A2 TECHNICAL INFORMATION

Code	EMP.160	EMP.210
Capacity (Gn)	1/4-100 7 pcs	1/4-100 9 pieces
Gas Type	R290	R290
Gas Weight (gr)	70	70
Power (Kw)	0.2	0.2
Operating Voltage (V)	220-230	220-230
Cable Cross Section (mm ²)	3x1.5	3x1.5
Fuse Selection (A)	25	25
Operating Range (°C)	+0 / +5	+0 / +5
Density (kg/m ³)	40	40

CODE	MODEL
EMP.160	7x1/4 GN tub capacity
EMP.210	9x1/4 GN tub capacity

A3 TRANSPORT

*This device cannot be handheld. Therefore, use a forklift truck (forklift or pallet truck) to transport the device. (The lift arms of the forklift or pallet truck should reach more than halfway from the bottom of the device).

OPENING THE A4 PACKAGE

*The device should be opened and its packaging should be destroyed according to the regulations of the country of use. Food contact parts are stainless steel. All plastic parts are marked with the symbol of the material.

*Check that the parts of the device are complete and that there is no damage during transportation.


B ASSEMBLY

*Place the product on a flat and solid ground, take necessary precautions against risks of tipping over.

*The personnel who will provide installation and service to the device must be experts in their field and have an installation-service license issued by our company.

*Connection to the electrical power source must be made by an authorized person.

*Make sure that the voltage you connect the device to is the same as the voltage value written on the device label.

 **7** grounding connection of the device must be made in accordance with standards and safety rules.

*The grounding of the device must be connected to the grounding line of the electrical installation on the nearest panel.

*The device's electrical connection, main fuse and residual current fuse must be made in accordance with the applicable regulations and rules.

* If two devices are to be placed side by side, at least 2 cm space should be left between them. This way you avoid condensation.

STOVE TOP SALADBARS

C GENERAL WARNINGS



*Do not use the device in facilities without adequate lighting.



* Never touch the moving parts while using the device.



*Do not install the device close to flammable and explosive materials. Place the device at least 50 cm away from devices with heat sources.



*Do not operate the device idle.



*Do not load too much below or above the capacity of the device.



*Do not intervene in the device without using appropriate protective equipment.



*In case of a fire or flash of flame for any reason in the area where the device is used, immediately turn off the gas valves and electrical switches (if any) and use a fire extinguisher. Never use water to extinguish the flame.



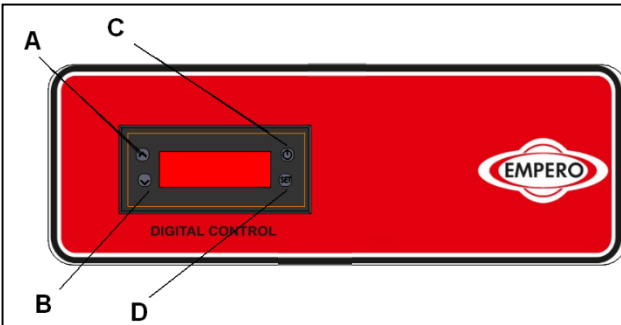
*Damages caused by lack of grounding connection will not be covered by the warranty.



*The device should not be exposed to direct sunlight.



*Do not place heavy objects on the device.

D USING THE DEVICE***Control Panel:**

- A** : Rank increase
B : Degree reduction
C : Display on/off
D : "SET" confirmation button

***Use of:**

- Before first use, clean the interior and exterior surfaces of the device with a cloth dipped in warm soapy water. Then wipe again with a wet cloth and dry.
- Plug the device into the socket.
- Adjust the temperature value of the device with the up and down arrow keys.
- When first use, let the device run idle for 12 hours. Do not open the cabinet doors at this stage.
- Close the refrigerator doors after placing your food or drinks.
- Opening the cabinet doors frequently or leaving them open will affect the cooling of the food.

STOVE TOP SALADBARS

E CLEANING AND MAINTENANCE

➤ **What to Do After Each Use;**

- While cleaning the device, make sure that the plug is not in the socket or the switch is turned off.
- Each time you empty the ingredients in the prep tubs, wash and dry the tubs.
- Wipe the control panel of the device with a dry cloth.
- Make sure that the cleaning products used during the cleaning of the device are hygienic.
- Do not use acid and derivative materials for cleaning the device.
- While cleaning the device, do not wash the device with water. Otherwise, water will leak into the electrical installation and cause it to burn.

➤ **What to do periodically;**

- Maintenance should only be carried out by trained persons.
- Perform periodic cleaning of the device every 15 days.
- Be sure to have periodic maintenance of the fire extinguisher, which should be kept near the device.

F TROUBLESHOOTING

THE DEVICE DOES NOT WORK

1. Check whether the device is plugged into the socket.
2. Check the electrical connections.
3. Check whether the fuse is open.

SOUND IS COMING FROM THE DEVICE

1. Check the engine.

DEVICE STOPPED

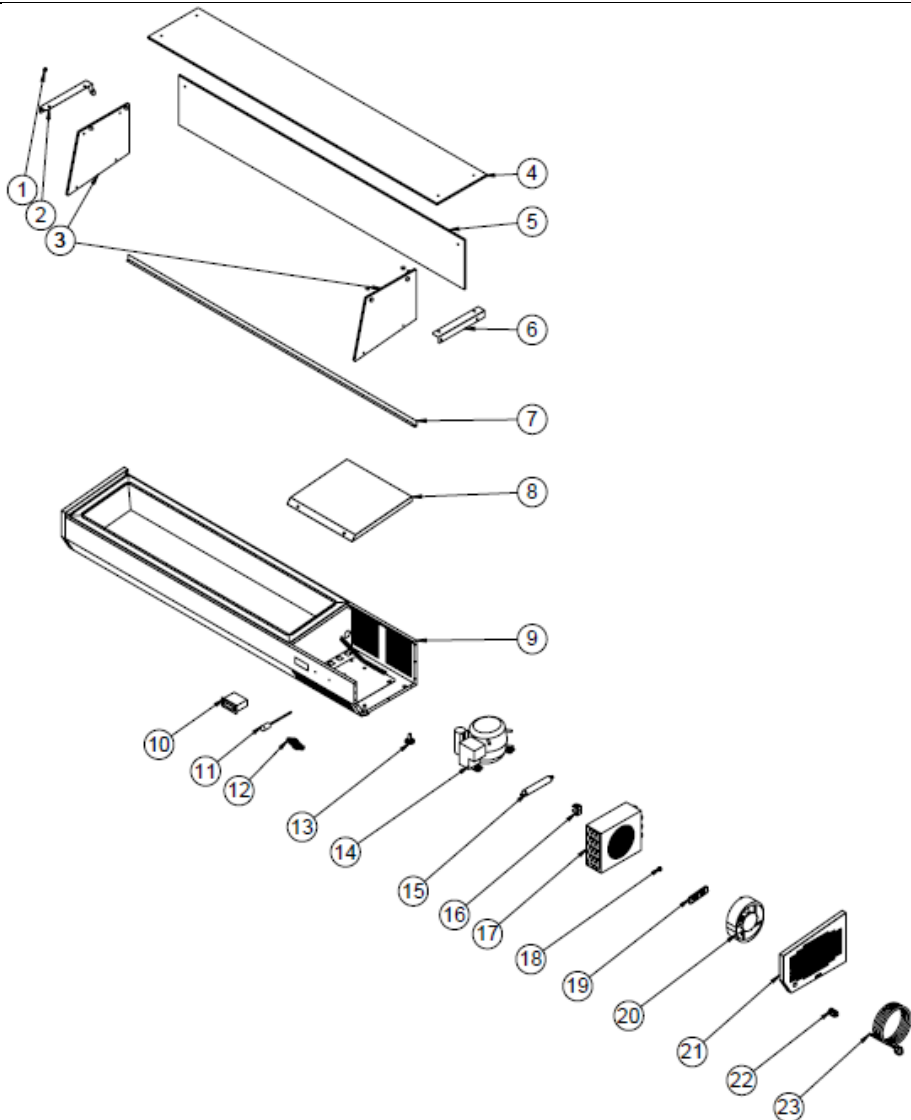
1. The device may stop due to low voltage. In this case, check the voltage.
2. In case of any leakage current in the electrical connections, the device stops. In this case, contact the service technician.

- If the cooling is not done in appropriate quality,
- If any of the security functions are not working,
 - Do not use the device.

***If the above problems still persist, please contact our authorized services.**

STOVE TOP SALADBAR

G SPARE PARTS LIST - DISASSEMBLED VIEW



EMP.160 / EMP.210

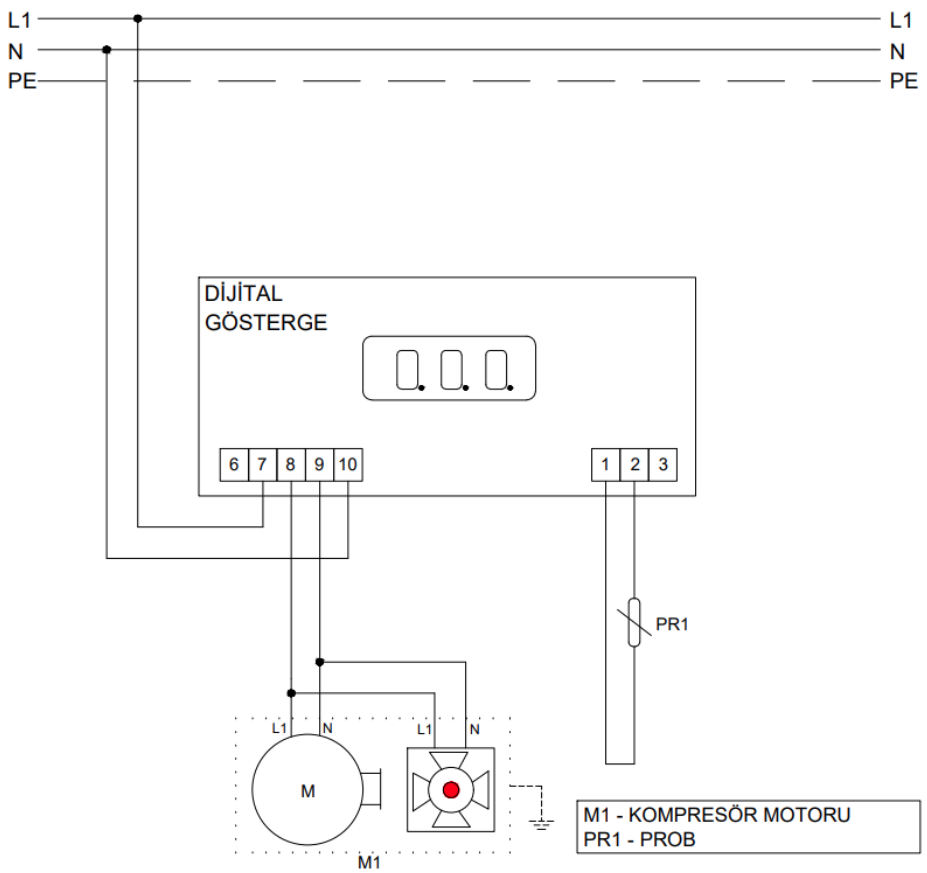
G SPARE PARTS LIST - DISASSEMBLED VIEW

PRODUCT CODE: EMP.160 / EMP.210

NO	NAME OF THE PRODUCT	U.CODE
1	PLUG	M.AKS-GNL-001
2	GLASS HOLDER RIGHT SHEET	YSC-ERK.SU16-LZ-0019
3	336*266* SIDE GLASS	M.CAM-ERK-005
4	1559*270 TOP GLASS – EMP.160	M.CAM-ERK-009
4	1959*270 TOP GLASS – EMP.210	M.CAM-ERK-011
5	1543*230 WINDSHIELD – EMP.160	M.CAM-ERK-008
5	1943*230 WINDSHIELD – EMP.210	M.CAM-ERK-010
6	GLASS HOLDER LEFT SHEET	YSC-ERK.SU16-LZ-0020
7	GLASS HOLDER SHEET – EMP.160	YSC-ERK.SU16-PN-0020
7	GLASS HOLDER SHEET – EMP.210	YSC-ERK.SU21-PN-0006
8	ENGINE TOP SHEET – EMP.160	YSC-ERK.SU16-LZ-0016
8	ENGINE TOP SHEET – EMP.210	YSC-ERK.SU21-LZ-0004
9	CHASSIS	-
10	THERMOSTAT	ERK.M.ELK-EDM-DGT-007
11	PROP	ERK.M.ELK-EDM-DGT-012
12	METAL LABEL	M.AKS-OZL-MTL-002
13	FOOT	ERK.M.AKS-AYK-PLS-001
14	COMPRESSOR	M.SOG-KMS-034
15	DRAYER	M.SOG-DRY-004
16	HANDCUFF	M.PLS-ERK-003
17	1/5 CONDENSER	M.SOG-KDS-006
18	SIBO	M.SOG-MUH-001
19	PROP PLASTIC	M.ENJ-ERK-PLS-017
20	FAN	ERK.M.ELK-HVL-KFN-001
21	RIGHT SIDE SHEET	YSC-ERK.SU16-LZ-0022
22	CABLE GLAND	ERK.M.ELK-RKR-PLS-003
23	CABLE	ERK.M.ELK-PWR-PBK-003

STOVE TOP SALADBARS

H ELECTRICAL CIRCUIT DIAGRAM



M1-COMPRESSOR ENGINE
PR1-PROBE



STOVE TOP SALADBAR