



# BAIN MARIE SERVICE UNITS

## CONTENTS

---

<b>A</b>	<b>GENERAL INFORMATION.....</b>	<b>Page 2</b>
A1	PRODUCT DESCRIPTION .....	Page 3
A2	TECHNICAL INFORMATION .....	Page 3
A3	TRANSPORTATION.....	Page 4
A4	UNPACKING .....	Page 4
<b>B</b>	<b>INSTALLATION .....</b>	<b>Page 4</b>
<b>C</b>	<b>SAFETY INSTRUCTIONS.....</b>	<b>Page 5</b>
<b>D</b>	<b>OPERATION .....</b>	<b>Page 6</b>
<b>E</b>	<b>CLEANING &amp; MAINTENANCE.....</b>	<b>Page 7</b>
<b>F</b>	<b>TROUBLESHOOTING.....</b>	<b>Page 8</b>
<b>G</b>	<b>SPARE PART LIST- EXPLODING DRAWING .....</b>	<b>Page 9</b>
<b>H</b>	<b>ELECTRIC CIRCUIT SCHEMA.....</b>	<b>Page 34</b>

## A GENERAL INFORMATION

---

Before installing the appliance, read operation and maintenance instructions carefully. Wrong installation and part changing may damage the product or may cause injury on people. These are not in our company's responsibility to damage the appliance intentionally, negligence, detriments because of disobeying instructions and regulations, wrong connections. Unauthorized intervention to appliance invalidates the warranty.

1. This instruction manual should be kept in a safe place for future reference.
2. **Installation should be made in accordance with ordinances and security rules of that country by a qualified service personnel.**
3. This appliance has to be used by trained person.
4. Please turn off the appliance immediately in the event of malfunction or failure. The appliance should be repaired only by authorized service personnel. Please demand original spare part.

# BAIN MARIE SERVICE UNITS

## A1 PRODUCT DESCRIPTION

\*The Professional Bain Marie Hot Service Units, that provides high efficiency has been designed to be used in industrial kitchens.

Product Code	Dimensions (mm)	Weight (kg)	Packaging Dimensions (mm)
EMP.BEH.05	800x790x850	40	930x900x1220/1520
EMP.BEH.10	1250x790x850	67	1350x930x1220/1520
EMP.BEH.30	1500x790x850	79	1600x930x1220/1520
EMP.BEH.50	1800x790x850	95	2100x930x1220/1520
EMP.BEH.70	2100x790x850	157	2220x930x1220/1520

## A2 TECHNICAL INFORMATION

Product Code	Capacity	Power (KW)	Operating Voltage (V)	Cable (mm <sup>2</sup> )	Accessories
EMP.BEH.05	2x1/1 GN	3,6	220	3x1,5	*Wooden Decorated *Top Shelf Group *Tray Sliding Stand *Convex Glass *Granite Table
EMP.BEH.10	3x1/1 GN	3,6	220	3x1,5	
EMP.BEH.30	4x1/1 GN	3,5	220	3x1,5	
EMP.BEH.50	5x1/1 GN	3,5	220	3x1,5	
EMP.BEH.70	6x1/1 GN	7,2	220	3x1,5	

**A3 TRANSPORTATION**

---

\*This appliance can not be moved by hand from area to area.It must be moved on pallet with forklift truck.

**A4 UNPACKING**

---

\*Please unpack the package according to the security codes and ordinances of current country and get rid from the pack.Parts which contacts with food are produced by stainless steel.All plastic parts are marked by material's symbol.

\*Please check that all the parts of appliance had come completely and if they are damaged or not during the shipping.

**B INSTALLATION**

---

\*Please place the product to straight and sturdy ground,please take necessary steps against possibility of overturn.

\*Technician who will serve for installation and service for the appliance must be professional on this subject and must have installation and service licenses by the company.

\*Connection to Electric Power Supply must be done by authorized person.

\*Please be sure that the voltage connected to appliance must be equal with the voltage which is on appliance's label.



This appliance must be connected to an earthed outlet in accordance with safety rules and standards.











\*Appliance's earthing must be connected to earthing line on panel which is nearest to electric installation.

\*Connection to the main fuse and leak current fuse must be done in accordance with the current regulations.

## BAIN MARIE SERVICE UNITS

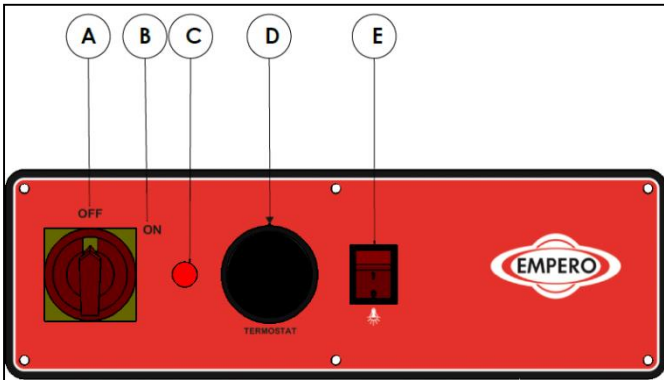
### C SAFETY INSTRUCTIONS

---

-  \*Do not use the appliance in insufficient lighted place.
-  \*Do not touch the moving attachments while the appliance operates.
-  \*Do not install the appliance in the presence of flammable or explosive materials.
-  \*Do not operate the appliance when the machine is empty.
-  \*Do not load so less or more than appliance's capacity .
-  \*Do not attempt to use the appliance without suitable protective equipments.
-  \*Because of any reason if there is a fire or flame flare where the appliance is used,turn off all gas valves and electric contactor switch quickly and use fire extinguisher .Never use water to extinguish the fire.
-  \*All the damages because of not having earthing connection will not be on warranty.
-  \*Do not put heavy materials on the top shelf group of bain marie hot service unit.
-  \*Do not leave the lids opened when there is food in hot service unit's tank.

## D OPERATION

### \*Control Panel;



- A : Switch ON position
- B : Switch OFF position
- C : Signal lamp
- D : Heat setting button
- E : Lamp ON/OFF

### \*Operating;

- Be sure that water drainage valve is turned off before operating.
- Take off upper lids and put water into bain marie tank.
- Plug in the appliance.
- In order to operate the appliance switch to (I) position.
- Adjust the thermostat heat to desired temperature.
- Indicator lamp on the switch signals as heaters work.
- During the working of heaters, the thermostat steps in or if bain marie unit is turned off, the indicator lamp will stop signaling.
- Put the foods that are wanted to be serviced into the tank.
- After heating process, switch to (0) position and unplug the appliance.
- Leave the water that is in tank to be cooled before draining.

## BAIN MARIE SERVICE UNITS

### **E      CLEANING & MAINTENANCE**

---

#### ➤ **CLEANING AND MAINTENANCE AFTER EVERY USE**

- Always turn off the appliance and disconnect from the power supply before cleaning.
- The parts that contact with food must be cleaned after every use.
- Clean the outer surface of the appliance with moist cloth.
- In order to clean the inside of the appliance, first take off the tank and then clean the inside of the appliance.
- Pay attention the cleaning materials to be hygienic.
- Do not use abrasive cleaning chemicals as these can leave harmful residues.
- Do not wash the appliance with water during the cleaning.

#### ➤ **PERIODIC CLEANING AND MAINTENANCE**

- Maintenance should be done by qualified person.
- According to frequency of use, clean the top shelf group with moist cloth.
- Clean the upper lighting lamp with dry cloth in periodic times.



## BAIN MARIE SERVICE UNITS

### F TROUBLESHOOTING

<b>THE APPLIANCE DOESN'T OPERATE</b>	<ol style="list-style-type: none"><li>1. Check if the appliance is plugged in.</li><li>2. Check the electrical connections and voltage.</li><li>3. Check if the fuse is on or off.</li><li>4. Check the resistances.</li></ol>
--------------------------------------	--

<b>THE APPLIANCE DOESN'T HEAT WELL</b>	<ol style="list-style-type: none"><li>1. Check the heat setting.</li><li>2. Check the amount of water in the tank.</li><li>3. Check the drainage valve.</li></ol>
--	---

<b>THE APPLIANCE STOPPED</b>	<ol style="list-style-type: none"><li>1. The appliance can stop due to low voltage. In this situation check the voltage.</li><li>2. The appliance's thermostat control stops the heat automatically when the heat reaches to desired temperature. When the temperature reduces, the heaters step in again.</li></ol>
------------------------------	--

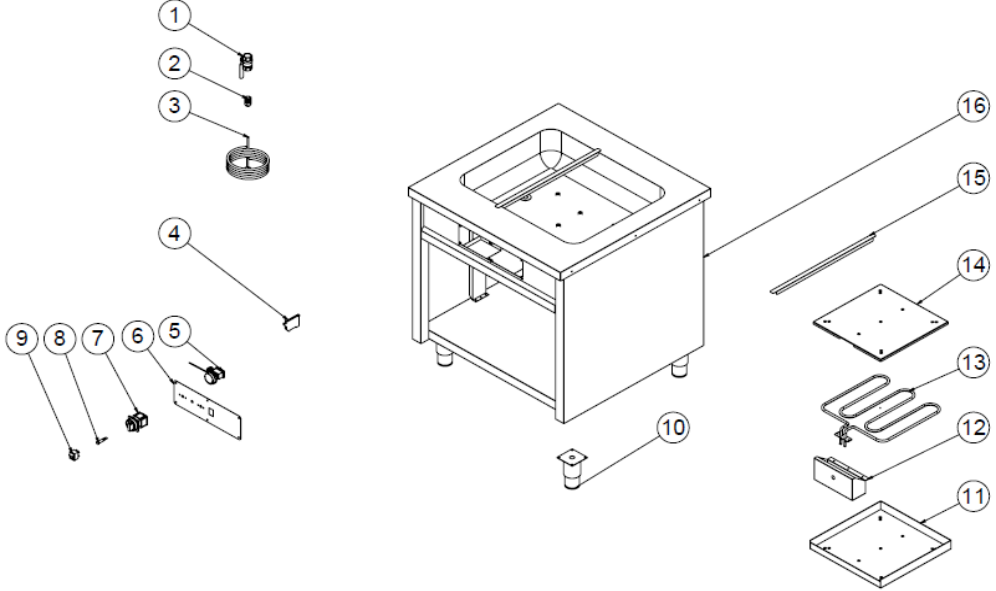
<ul style="list-style-type: none"><li>• If keeping the foods hot is not done at suitable quality</li><li>• If any function of security doesn't work<ul style="list-style-type: none"><li>➤ Do not use the appliance.</li></ul></li></ul>
--

**\*If these problems are still going on, contact with our authorized services.**



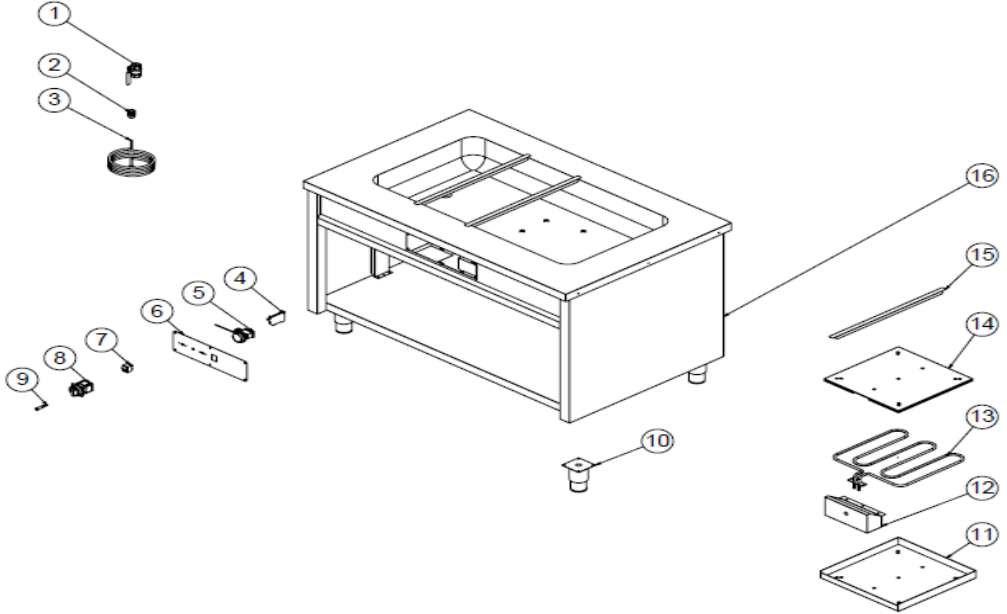
# BAIN MARIE SERVICE UNITS

## G SPARE PART LIST-EXPLODING DRAWING



PRODUCT CODE: EMP.BEH.05		
NO	PRODUCT NAME	P.CODE
1	VANA	ERK.M.MEK-TES-KVN-002
2	KABLO RAKORU	ERK.M.ELK-RKR-PLS-003
3	3*2,5 KABLO	ERK.M.ELK-PWR-PBK-005
4	3*2,5 KABLO	ERK.M.ELK-PWR-PBK-005
5	TERMOSTAT VE DÜĞMESİ	M.ELK-MEK-TRM1-012
6	ETİKET	M.AKS-ETK-LKS-ERK-002
7	ŞALTER	M.ELK-SLT-PKO-001
8	LAMBA	ERK.M.ELK-LMB-SNY-002
9	ANAHTAR	ERK.M.ELK-SLT-ANL-003
10	AYAK	ERK.M.AKS-AYK-INX-001
11	REZİSTANS ÜST SACI	YSC-ERS.SB-LZ-0005
12	REZİSTANS MUHAFAZA SACI	YSC-ERK.BEH-PN-0009
13	REZİSTANS	M.ELK-RZS-BRU-BEH-001
14	REZİSTANS ALT SACI	YSC-ERS.SB-LZ-0006
15	KÜVET ARA SACI	YSC-ERK.BSS2-PN-0131
16	ŞASE	-

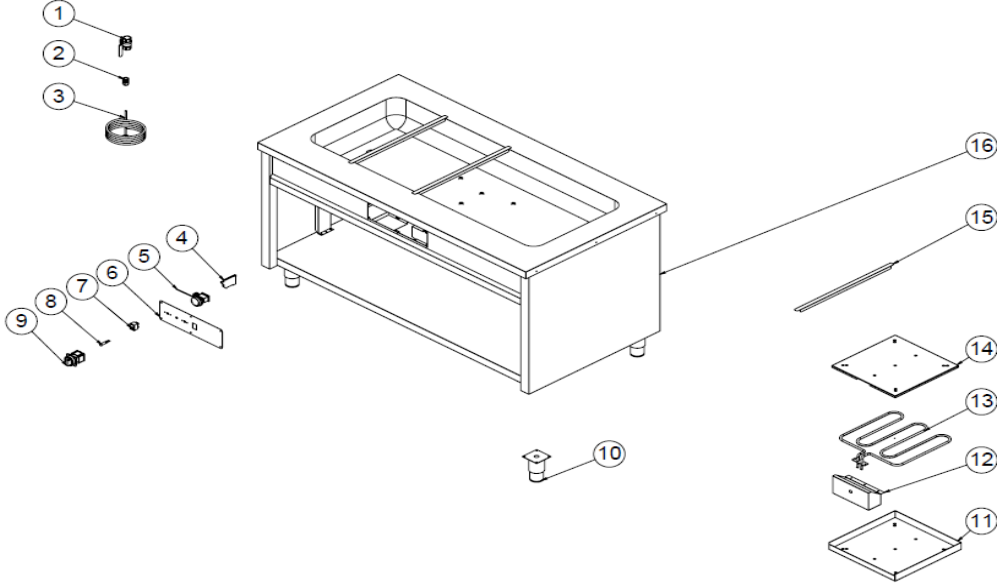
## G SPARE PART LIST-EXPLODING DRAWING



PRODUCT CODE: EMP.BEH.10		
NO	PRODUCT NAME	P.CODE
1	VALVE	ERK.M.MEK-TES-KVN-002
2	CABLE GLAND	ERK.M.ELK-RKR-PLS-003
3	3*2.5 MM CABLE	ERK.M.ELK-PWR-PBK-005
4	TERMINAL	ERK.M.ELK-KLM-028
5	THERMOSTAT AND BUTTON	M.ELK-MEK-TRM1-012
6	TICKET	M.AKS-ETK-LKS-ERK-002
7	KEY	ERK.M.ELK-SLT-ANL-003
8	SWITCH	M.ELK-SLT-PKO-001
9	LAMP	ERK.M.ELK-LMB-SNY-002
10	FOOT	ERK.M.AKS-AYK-INX-001
11	RESISTANCE TOP SHEET	YSC-ERS.SB-LZ-0005
12	RESISTANCE COVER SHEET	YSC-ERK.BEH-PN-0009
13	RESISTANCE	M.ELK-RZS-BRU-BEH-001
14	RESISTANCE BOTTOM SHEET	YSC-ERS.SB-LZ-0006
15	BATH TAP SHEET	YSC-ERK.BSS2-PN-0131
16	CHASSIS	-

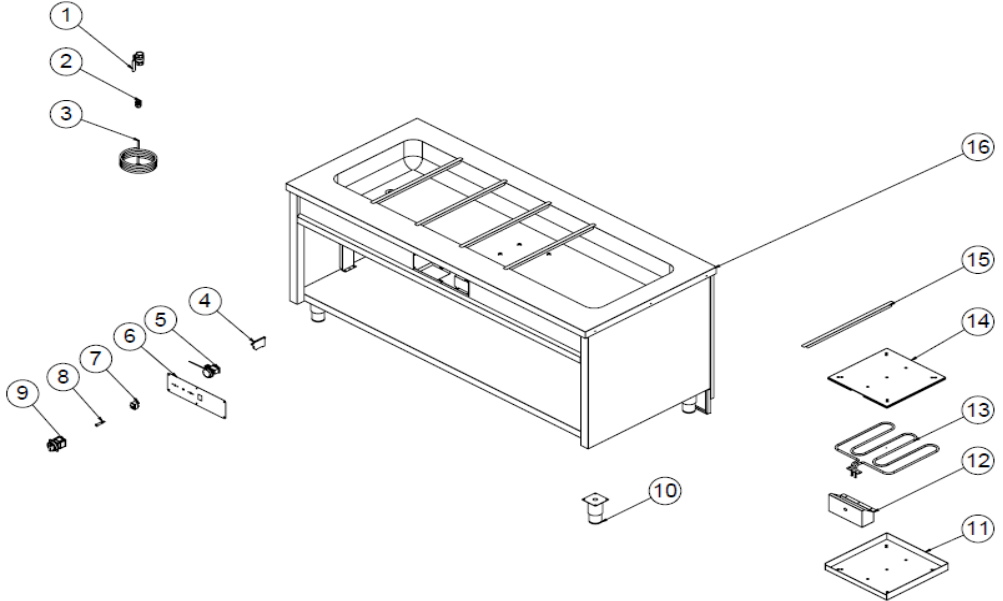
# BAIN MARIE SERVICE UNITS

## G SPARE PART LIST-EXPLODING DRAWING



PRODUCT CODE: EMP.BEH.30		
NO	PRODUCT NAME	P.CODE
1	VALVE	ERK.M.MEK-TES-KVN-002
2	CABLE GLAND	ERK.M.ELK-RKR-PLS-003
3	3*2.5 MM CABLE	ERK.M.ELK-PWR-PBK-005
4	TERMINAL	M.ELK-KLM-019
5	THERMOSTAT AND BUTTON	M.ELK-MEK-TRM1-012
6	TICKET	M.AKS-ETK-LKS-ERK-002
7	KEY	ERK.M.ELK-SLT-ANL-003
8	LAMP	ERK.M.ELK-LMB-SNY-002
9	SWITCH	M.ELK-SLT-PKO-001
10	FOOT	ERK.M.AKS-AYK-INX-001
11	RESISTANCE TOP SHEET	YSC-ERS.SB-LZ-0005
12	RESISTANCE COVER SHEET	YSC-ERK.BEH-PN-0009
13	RESISTANCE	M.ELK-RZS-BRU-SB-001
14	RESISTANCE BOTTOM SHEET	YSC-ERS.SB-LZ-0006
15	BATH TAP SHEET	YSC-ERK.BSS2-PN-0131
16	CHASSIS	-

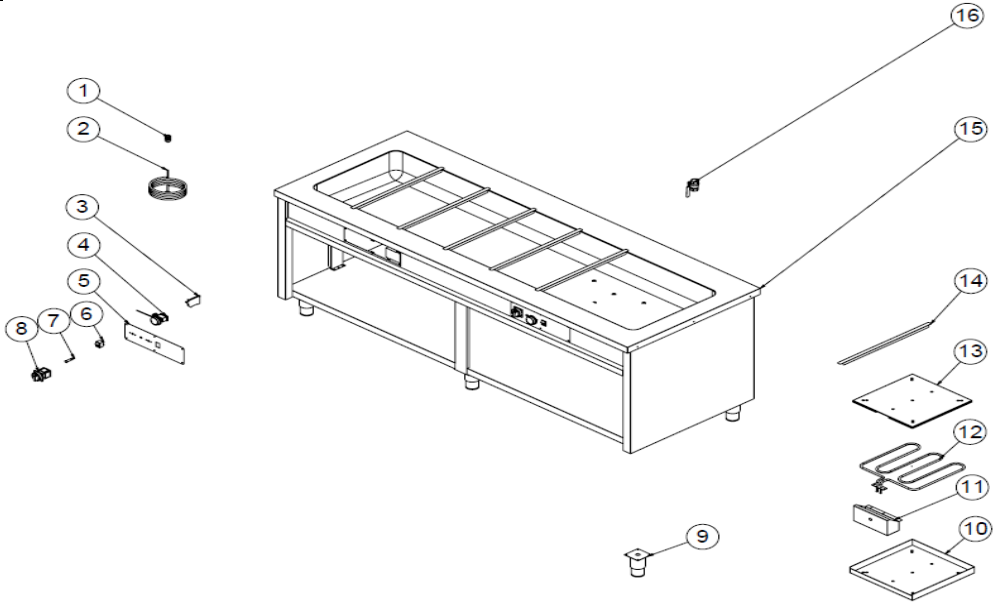
## G SPARE PART LIST-EXPLODING DRAWING



PRODUCT CODE: EMP.BEH.50		
NO	PRODUCT NAME	P.CODE
1	VALVE	ERK.M.MEK-TES-KVN-002
2	CABLE GLAND	ERK.M.ELK-RKR-PLS-003
3	3*2.5 MM CABLE	ERK.M.ELK-PWR-PBK-005
4	TERMINAL	ERK.M.ELK-KLM-028
5	THERMOSTAT AND BUTTON	M.ELK-MEK-TRM1-012
6	TICKET	M.AKS-ETK-LKS-ERK-002
7	KEY	ERK.M.ELK-SLT-ANL-003
8	LAMP	ERK.M.ELK-LMB-SNY-002
9	SWITCH	M.ELK-SLT-PKO-001
10	FOOT	ERK.M.AKS-AYK-INX-001
11	RESISTANCE TOP SHEET	YSC-ERS.SB-LZ-0005
12	RESISTANCE COVER SHEET	YSC-ERK.BEH-PN-0009
13	RESISTANCE	M.ELK-RZS-BRU-SB-001
14	RESISTANCE BOTTOM SHEET	YSC-ERS.SB-LZ-0006
15	BATH TAP SHEET	YSC-ERK.BSS2-PN-0131
16	CHASSIS	-

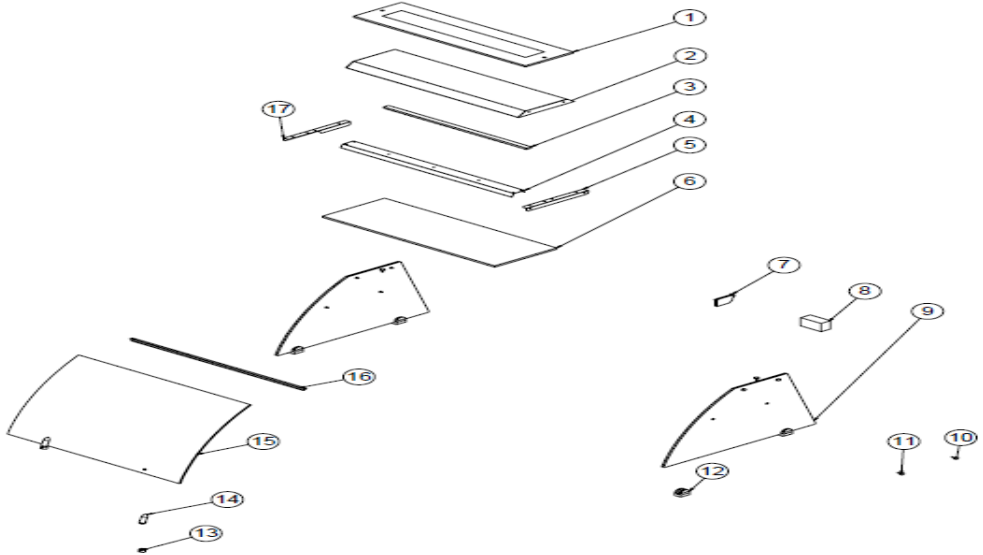
# BAIN MARIE SERVICE UNITS

## G SPARE PART LIST-EXPLODING DRAWING



PRODUCT CODE: EMP.BEH.70		
NO	PRODUCT NAME	P.CODE
1	CABLE GLAND	ERK.M.ELK-RKR-PLS-003
2	3*2.5 MM CABLE	ERK.M.ELK-PWR-PBK-005
3	TERMINAL	ERK.M.ELK-KLM-028
4	THERMOSTAT AND BUTTON	M.ELK-MEK-TRM1-012
5	TICKET	M.AKS-ETK-LKS-ERK-002
6	KEY	ERK.M.ELK-SLT-ANL-003
7	LAMP	ERK.M.ELK-LMB-SNY-002
8	SWITCH	M.ELK-SLT-PKO-001
9	FOOT	ERK.M.AKS-AYK-INX-001
10	RESISTANCE TOP SHEET	YSC-ERS.SB-LZ-0005
11	RESISTANCE COVER SHEET	YSC-ERK.BEH-PN-0009
12	RESISTANCE	M.ELK-RZS-BRU-BEH-001
13	RESISTANCE BOTTOM SHEET	YSC-ERS.SB-LZ-0006
14	BATH TAP SHEET	YSC-ERK.BSS2-PN-0131
15	CHASSIS	-
16	VALVE	ERK.M.MEK-TES-KVN-002

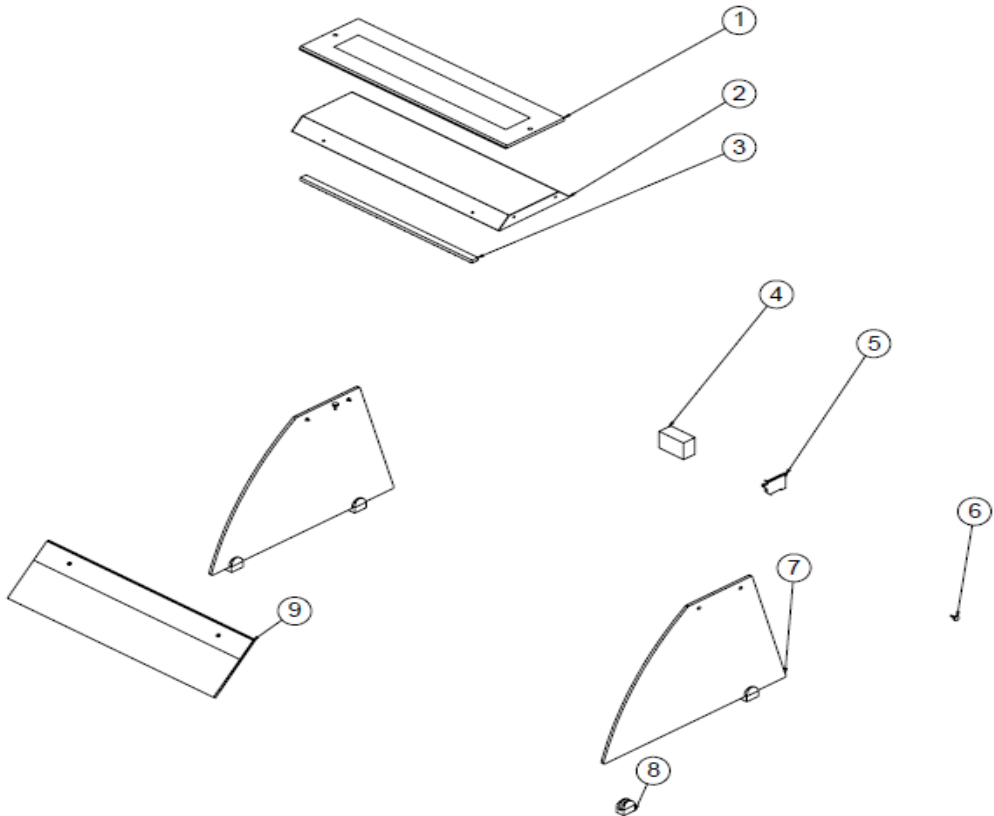
## G SPARE PART LIST-EXPLODING DRAWING



PRODUCT CODE: EMP.BEH.05.BC.T		
NO	PRODUCT NAME	P.CODE
1	TOP GLASS ( 720x200x10 mm )	M.CAM-ERK-BC-002
2	LAMP SHEET	YSC-ERK.BEH-LZ-0049
3	LED	M.ELK-LED-008
4	SHELF LAMP SHEET	YSC-ERK.BEH-LZ-0006
5	SHELF LAMP SHEET RIGHT	YSC-ERK.BSS2-LZ-0037
6	INTERMEDIATE CAM 720*260	M.CAM-ERK-018
7	TERMINAL	M.ELK-KLM-019
8	POWER SOURCE	M.ELK-MUH-006
9	SIDE GLASS (640*426*8MM)	M.CAM-ERK-BC-001
10	PLUG	M.AKS-GNL-005
11	SUCTION CUPS	ERK.M.AKS-GNL-008
12	SHELF HOLDER	M.AKS-GNL-006
13	HINGE BOTTOM	YTL-ERK.BSS-KS-0002
14	HINGE TOP	YTL-ERK.BSS-KS-0001
15	WINDSCREEN 720*519*	M.CAM-ERK-BC-003
16	HANDLE PROFILE	HPR-ALM-OZL-004
17	LAMP SHEET LEFT	YSC-ERK.BSS2-LZ-0038

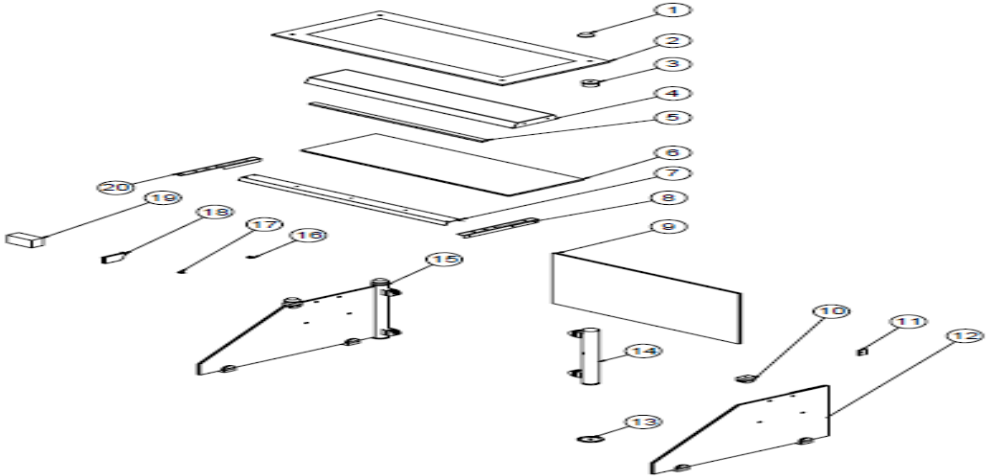
# BAIN MARIE SERVICE UNITS

## G SPARE PART LIST-EXPLODING DRAWING



PRODUCT CODE: EMP.BEH.05.BC.Y		
NO	PRODUCT NAME	P.CODE
1	UPPER HALF GLASS 720*205	M.CAM-ERK-BC-030
2	LAMP SHEET	YSC-ERK.BEH-LZ-0077
3	LED	M.ELK-LED-001
4	POWER SOURCE	M.ELK-MUH-006
5	TERMINAL	M.ELK-KLM-019
6	PLUG	M.AKS-GNL-005
7	SIDE GLASS (640*426 8MM)	M.CAM-ERK-BC-027
8	SHELF HOLDER	M.AKS-GNL-006
9	FRONT HALF GLASS 720*200	M.CAM-ERK-BC-029

## G SPARE PART LIST-EXPLODING DRAWING



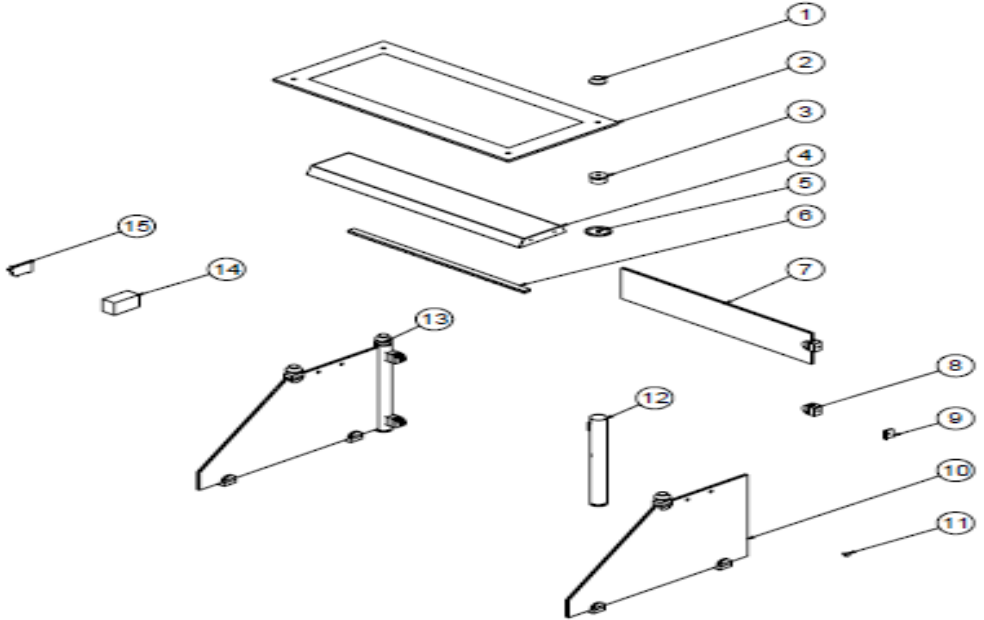
**PRODUCT CODE: EMP.BEH.05.USC.T**

NO	PRODUCT NAME	P.CODE
1	TOP GLASS HOLDER	M.ENJ-ERK-PLS-136
2	TOP GLASS ( 800x375x10 mm )	M.CAM-ERK-016
3	DERLIN	M.MUH-039
4	LAMP SHEET	YSC-ERK.BEH-LZ-0002
5	LED	M.ELK-LED-008
6	INTERMEDIATE CAM 720*260	M.CAM-ERK-018
7	SHELF LAMP SHEET	YSC-ERK.BEH-LZ-0006
8	SHELF LAMP SHEET RIGHT	YSC-ERK.BSS2-LZ-0037
9	WINDSCREEN 648*400	M.CAM-ERK-017
10	SHELF HOLDER	M.AKS-GNL-006
11	SHELF HOLDER	ERK.M.AKS-GNL-011
12	SIDE GLASS (610*400)	M.CAM-ERK-019
13	ORING (3x27)	M.CNT-ORG-010
14	PIPE Ø42	YBR-ERK.BEH-KS-0001
15	PIPE Ø42	YBR-ERK.BEH-KS-0002
16	PLUG	M.AKS-GNL-005
17	SUCTION CUPS	ERK.M.AKS-GNL-008
18	TERMINAL	M.ELK-KLM-019
19	POWER SOURCE	M.ELK-MUH-006
20	LAMP SHEET LEFT	YSC-ERK.BSS2-LZ-0038



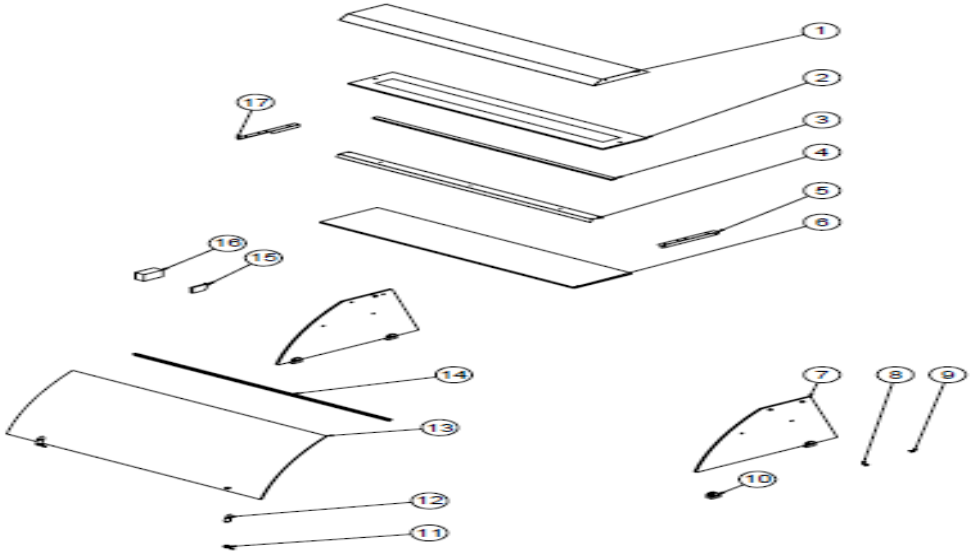
# BAIN MARIE SERVICE UNITS

## G SPARE PART LIST-EXPLODING DRAWING



PRODUCT CODE: EMP.BEH.05.USC.Y		
NO	PRODUCT NAME	P.CODE
1	TOP GLASS HOLDER	M.ENJ-ERK-PLS-136
2	TOP GLASS ( 800x375x10 mm )	M.CAM-ERK-016
3	DERLIN	M.MUH-039
4	LAMP SHEET	YSC-ERK.BEH-LZ-0002
5	ORING (3x27)	M.CNT-ORG-010
6	LED	M.ELK-LED-008
7	FRONT HALF GLASS 648*150	M.CAM-ERK-046
8	SHELF HOLDER	M.AKS-GNL-006
9	SHELF HOLDER	ERK.M.AKS-GNL-011
10	SIDE GLASS (610*400*8MM)	M.CAM-ERK-045
11	PLUG	M.AKS-GNL-005
12	PIPE Ø42	YBR-ERK.BEH-KS-0004
13	PIPE Ø42	YBR-ERK.BEH-KS-0003
14	POWER SOURCE	M.ELK-MUH-006
15	TERMINAL	M.ELK-KLM-019

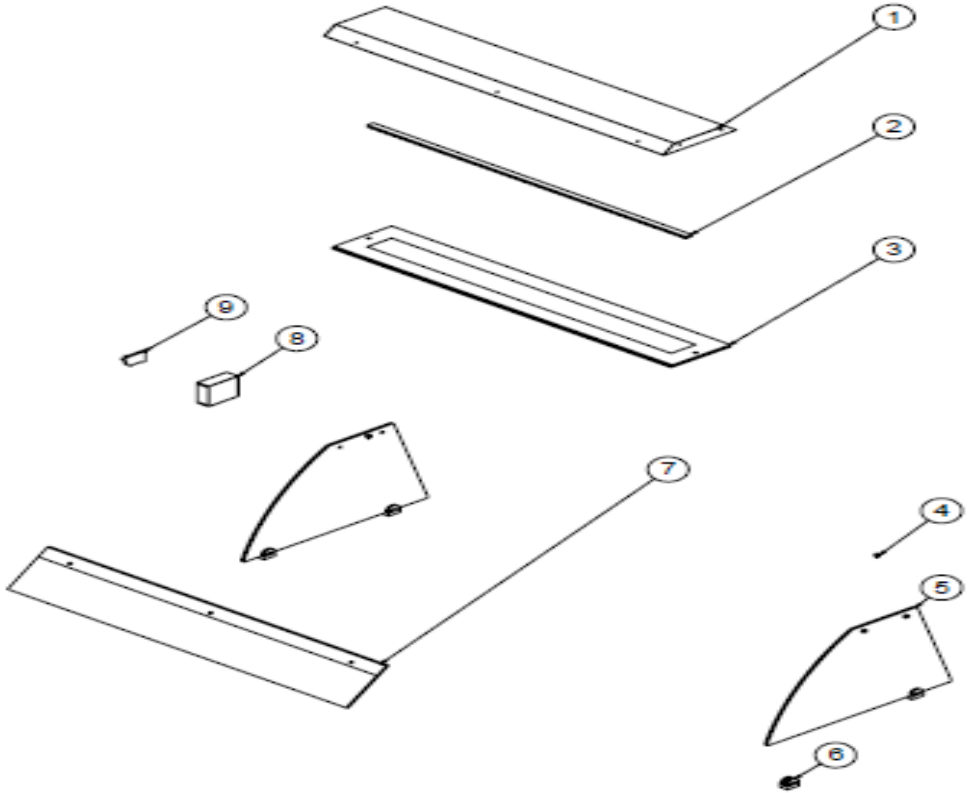
## G SPARE PART LIST-EXPLODING DRAWING



PRODUCT CODE: EMP.BEH.10.BC.T		
NO	PRODUCT NAME	P.CODE
1	LAMP SHEET	YSC-ERK.BSS2-LZ-0036
2	TOP GLASS ( 1170 * 200 * 10 mm )	M.CAM-ERK-BC-005
3	LED	M.ELK-LED-001
4	LAMP SHEET	YSC-ERK.BSS2-LZ-0035
5	SHELF LAMP SHEET RIGHT	YSC-ERK.BSS2-LZ-0037
6	CAM (1170*260)	M.CAM-ERK-022
7	SIDE GLASS (640*426*8MM)	M.CAM-ERK-BC-001
8	PLUG	M.AKS-GNL-005
9	SUCTION CUPS	ERK.M.AKS-GNL-008
10	SHELF HOLDER	M.AKS-GNL-006
11	HINGE BOTTOM	YTL-ERK.BSS-KS-0002
12	HINGE TOP	YTL-ERK.BSS-KS-0001
13	WINDSCREEN 1170*519	M.CAM-ERK-BC-006
14	HANDLE PROFILE	HPR-ALM-OZL-004
15	TERMINAL	M.ELK-KLM-019
16	POWER SOURCE	M.ELK-MUH-006
17	LAMP SHEET LEFT	YSC-ERK.BSS2-LZ-0038

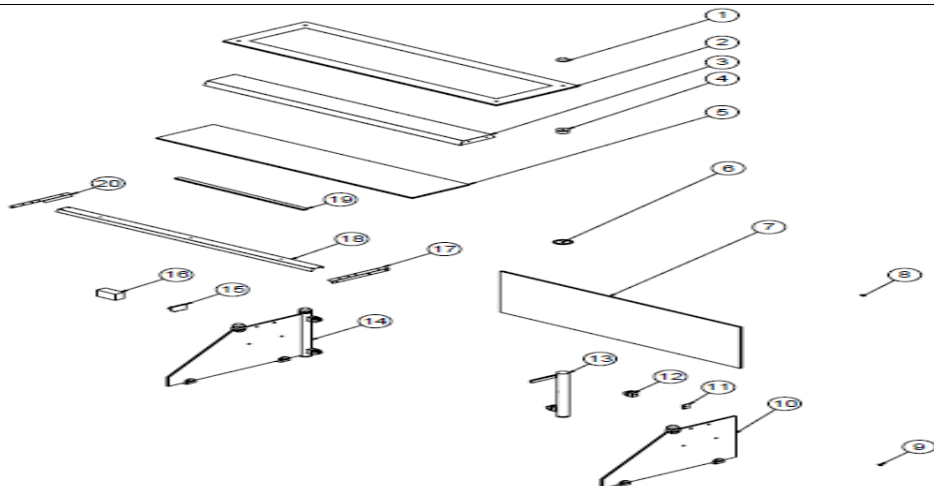
# BAIN MARIE SERVICE UNITS

## G SPARE PART LIST-EXPLODING DRAWING



PRODUCT CODE: EMP.BEH.10.BC.Y		
NO	PRODUCT NAME	P.CODE
1	LAMP SHEET	YSC-ERK.BSS2-LZ-0041
2	LED	M.ELK-LED-001
3	TOP GLASS (1170*205*10MM)	M.CAM-ERK-BC-007
4	PLUG	M.AKS-GNL-005
5	SIDE GLASS (640*426 8MM)	M.CAM-ERK-BC-027
6	SHELF HOLDER	M.AKS-GNL-006
7	WINDSCREEN(1170*200*8MM)	M.CAM-ERK-BC-010
8	POWER SOURCE	M.ELK-MUH-006
9	TERMINAL	M.ELK-KLM-019

## G SPARE PART LIST-EXPLODING DRAWING

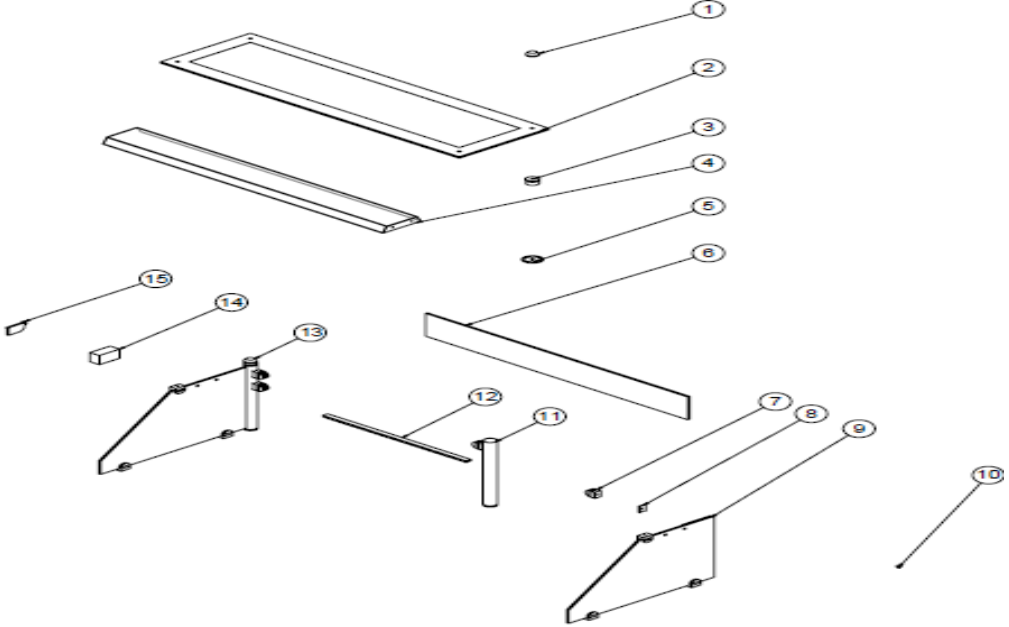


**PRODUCT CODE: EMP.BEH.10.USC.T**

NO	PRODUCT NAME	P.CODE
1	TOP GLASS HOLDER	M.ENJ-ERK-PLS-136
2	TOP GLASS (1250x375)	M.CAM-ERK-020
3	LAMP SHEET	YSC-ERK.BSS2-LZ-0034
4	DERLIN	M.MUH-039
5	CAM (1170*260)	M.CAM-ERK-022
6	ORING (3x27)	M.CNT-ORG-010
7	WINDSCREEN (1098*400)	M.CAM-ERK-021
8	PLUG	M.AKS-GNL-005
9	SUCTION CUPS	ERK.M.AKS-GNL-008
10	SIDE GLASS (610*400)	M.CAM-ERK-019
11	SHELF HOLDER	ERK.M.AKS-GNL-011
12	SHELF HOLDER	M.AKS-GNL-006
13	PIPE Ø42	YBR-ERK.BEH-KS-0001
14	PIPE Ø42	YBR-ERK.BEH-KS-0002
15	TERMINAL	M.ELK-KLM-019
16	POWER SOURCE	M.ELK-MUH-006
17	SHELF LAMP SHEET RIGHT	YSC-ERK.BSS2-LZ-0037
18	LAMP SHEET	YSC-ERK.BSS2-LZ-0035
19	LED	M.ELK-LED-001
20	LAMP SHEET LEFT	YSC-ERK.BSS2-LZ-0038

# BAIN MARIE SERVICE UNITS

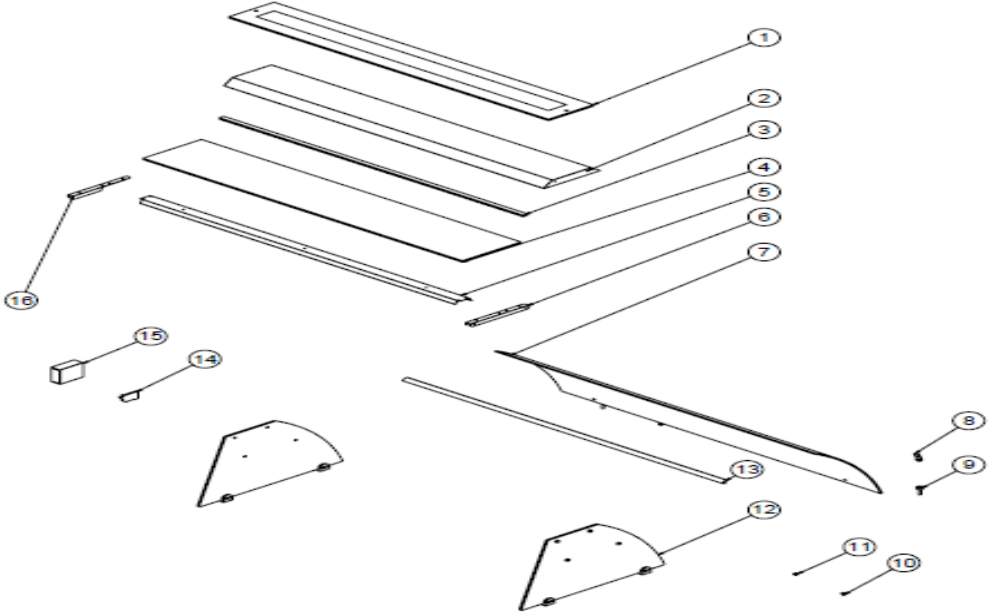
## G SPARE PART LIST-EXPLODING DRAWING



PRODUCT CODE: EMP.BEH.10.USC.Y

NO	PRODUCT NAME	P.CODE
1	TOP GLASS HOLDER	M.ENJ-ERK-PLS-136
2	TOP GLASS (1250x375)	M.CAM-ERK-020
3	DERLIN	M.MUH-039
4	LAMP SHEET	YSC-ERK.BSS2-LZ-0034
5	ORING (3x27)	M.CNT-ORG-010
6	FRONT HALF GLASS 1098*150	M.CAM-ERK-047
7	SHELF HOLDER	M.AKS-GNL-006
8	SHELF HOLDER	ERK.M.AKS-GNL-011
9	SIDE GLASS (610*400*8MM)	M.CAM-ERK-045
10	PLUG	M.AKS-GNL-005
11	PIPE Ø42	YBR-ERK.BEH-KS-0003
12	LED	M.ELK-LED-001
13	PIPE Ø42	YBR-ERK.BEH-KS-0004
14	POWER SOURCE	M.ELK-MUH-006
15	TERMINAL	M.ELK-KLM-019

## G SPARE PART LIST-EXPLODING DRAWING

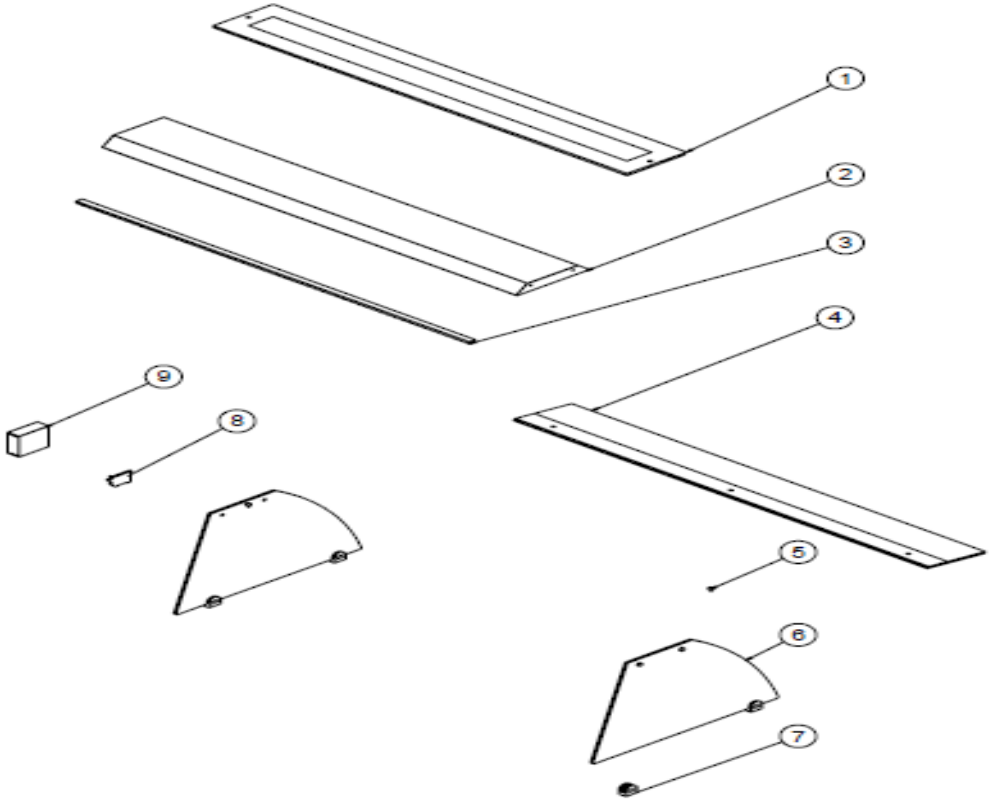


**PODUCT CODE: EMP.BEH.30.BC.T**

NO	PRODUCT NAME	P.CODE
1	TOP GLASS (1420x200x10 mm)	M.CAM-ERK-BC-008
2	LAMP SHEET	YSC-ERK.BSS4-LZ-0022
3	LED	M.ELK-LED-002
4	SIDE GLASS (1420*260)	M.CAM-ERK-025
5	LAMP SHEET	YSC-ERK.BSS4-LZ-0020
6	SHELF LAMP SHEET RIGHT	YSC-ERK.BSS2-LZ-0037
7	WINDSCREEN (1420*519*6MM)	M.CAM-ERK-BC-009
8	HINGE TOP	YTL-ERK.BSS-KS-0001
9	HINGE BOTTOM	YTL-ERK.BSS-KS-0002
10	PLUG	M.AKS-GNL-005
11	SUCTION CUPS	ERK.M.AKS-GNL-008
12	SIDE GLASS (640*426*8MM)	M.CAM-ERK-BC-001
13	HANDLE PROFILE	HPR-ALM-OZL-004
14	TERMINAL	M.ELK-KLM-019
15	POWER SOURCE	M.ELK-MUH-006
16	LAMP SHEET LEFT	YSC-ERK.BSS2-LZ-0038

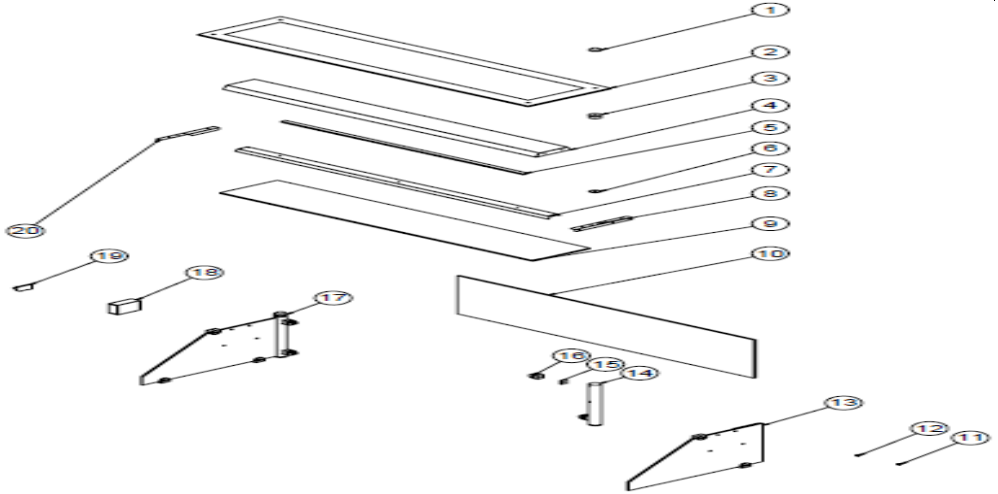
# BAIN MARIE SERVICE UNITS

## G SPARE PART LIST-EXPLODING DRAWING



PRODUCT CODE: EMP.BEH.30.BC.Y		
NO	PRODUCT NAME	P.CODE
1	TOP GLASS (1420x205x10 mm)	M.CAM-ERK-BC-025
2	LAMP SHEET	YSC-ERK.BSS4-LZ-0023
3	LED	M.ELK-LED-002
4	WINDSCREEN (1420*200*8 MM )	M.CAM-ERK-BC-053
5	PLUG	M.AKS-GNL-005
6	SIDE GLASS (640*426 8MM)	M.CAM-ERK-BC-027
7	SHELF HOLDER	M.AKS-GNL-006
8	TERMINAL	M.ELK-KLM-019
9	POWER SOURCE	M.ELK-MUH-006

## G SPARE PART LIST-EXPLODING DRAWING

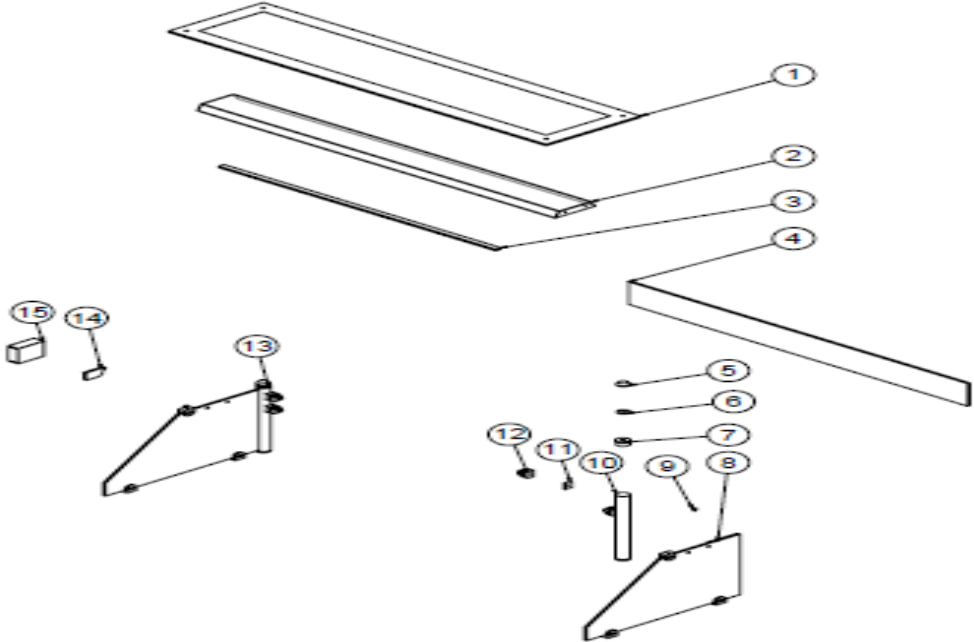


PRODUCT CODE: EMP.BEH.30.USC.T		
NO	PRODUCT NAME	P.CODE
1	TOP GLASS HOLDER	M.ENJ-ERK-PLS-136
2	TOP GLASS (1500*375)	M.CAM-ERK-023
3	DERLIN	M.MUH-039
4	LAMP SHEET	YSC-ERK.BSS4-LZ-0021
5	LED	M.ELK-LED-002
6	ORING (3x27)	M.CNT-ORG-010
7	LAMP SHEET	YSC-ERK.BSS4-LZ-0020
8	SHELF LAMP SHEET RIGHT	YSC-ERK.BSS2-LZ-0037
9	SIDE GLASS (1420*260)	M.CAM-ERK-025
10	WINDSCREEN (1348*400)	M.CAM-ERK-024
11	PLUG	M.AKS-GNL-005
12	SUCTION CUPS	ERK.M.AKS-GNL-008
13	SIDE GLASS (610*400)	M.CAM-ERK-019
14	PIPE Ø42	YBR-ERK.BEH-KS-0001
15	SHELF HOLDER	ERK.M.AKS-GNL-011
16	SHELF HOLDER	M.AKS-GNL-006
17	PIPE Ø42	YBR-ERK.BEH-KS-0002
18	POWER SOURCE	M.ELK-MUH-006
19	TERMINAL	M.ELK-KLM-019
20	LAMP SHEET LEFT	YSC-ERK.BSS2-LZ-0038



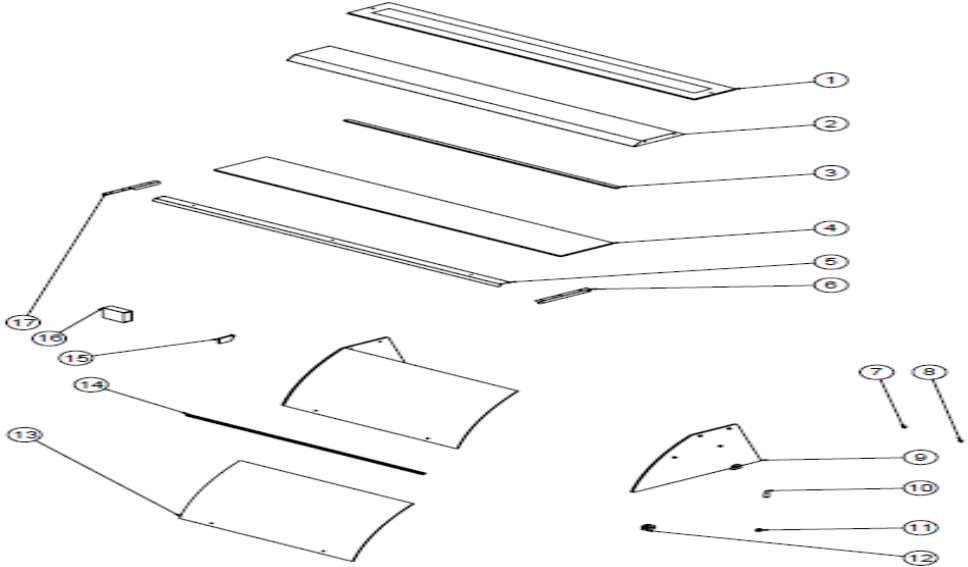
# BAIN MARIE SERVICE UNITS

## G SPARE PART LIST-EXPLODING DRAWING



PRODUCT CODE: EMP.BEH.30.USC.Y		
NO	PRODUCT NAME	P.CODE
1	TOP GLASS (1500*375)	M.CAM-ERK-023
2	LAMP SHEET	YSC-ERK.BSS4-LZ-0021
3	LED	M.ELK-LED-002
4	FRONT HALF GLASS 1348*150	M.CAM-ERK-048
5	TOP GLASS HOLDER	M.ENJ-ERK-PLS-136
6	ORING (3x27)	M.CNT-ORG-010
7	DERLIN	M.MUH-039
8	SIDE GLASS (610*400*8MM)	M.CAM-ERK-045
9	PLUG	M.AKS-GNL-005
10	PIPE Ø42	YBR-ERK.BEH-KS-0003
11	SHELF HOLDER	ERK.M.AKS-GNL-011
12	SHELF HOLDER	M.AKS-GNL-006
13	PIPE Ø42	YBR-ERK.BEH-KS-0004
14	TERMINAL	M.ELK-KLM-019
15	POWER SOURCE	M.ELK-MUH-006

## G SPARE PART LIST-EXPLODING DRAWING

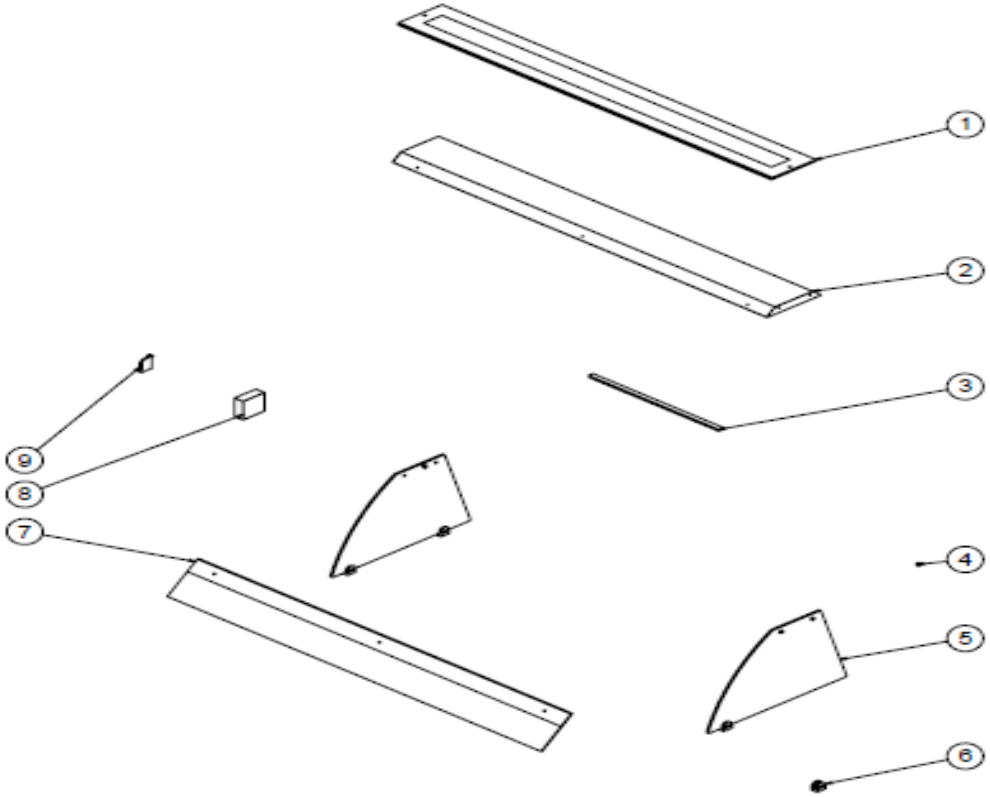


**PODUCT CODE: EMP.BEH.50.BC.T**

NO	PRODUCT NAME	P.CODE
1	TOP GLASS ( 1720x205x10 mm )	M.CAM-ERK-BC-011
2	LAMP SHEET	YSC-ERK.BEH-LZ-0045
3	LED	M.ELK-LED-010
4	SIDE GLASS (1720*260)	M.CAM-ERK-028
5	LAMP SHEET	YSC-ERK.BEH-LZ-0012
6	SHELF LAMP SHEET RIGHT	YSC-ERK.BSS2-LZ-0037
7	PLUG	M.AKS-GNL-005
8	SUCTION CUPS	ERK.M.AKS-GNL-008
9	SIDE GLASS (640*426*8MM)	M.CAM-ERK-BC-001
10	HINGE TOP	YTL-ERK.BSS-KS-0001
11	HINGE BOTTOM	YTL-ERK.BSS-KS-0002
12	SHELF HOLDER	M.AKS-GNL-006
13	WINDSCREEN (859*519*6MM)	M.CAM-ERK-BC-012
14	HANDLE PROFILE	HPR-ALM-OZL-004
15	TERMINAL	M.ELK-KLM-019
16	POWER SOURCE	M.ELK-MUH-006
17	LAMP SHEET LEFT	YSC-ERK.BSS2-LZ-0038

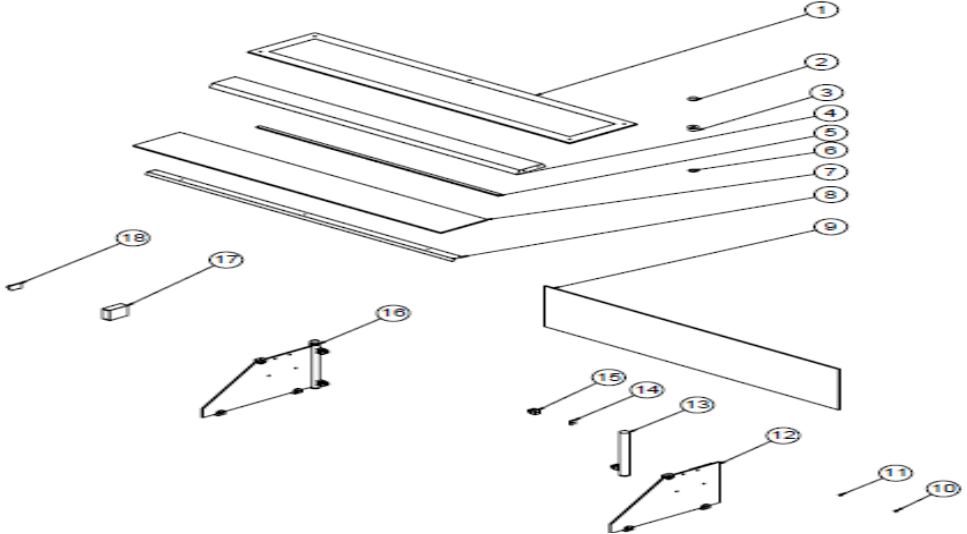
# BAIN MARIE SERVICE UNITS

## G SPARE PART LIST-EXPLODING DRAWING



PRODUCT CODE: EMP.BEH.50.BC.Y		
NO	PRODUCT NAME	P.CODE
1	TOP GLASS (1720*205*10MM)	M.CAM-ERK-BC-032
2	LAMP SHEET	YSC-ERK.BEH-LZ-0081
3	LED	M.ELK-LED-010
4	PLUG	M.AKS-GNL-005
5	SIDE GLASS (640*426 8MM)	M.CAM-ERK-BC-027
6	SHELF HOLDER	M.AKS-GNL-006
7	WINDSCREEN (1720*200*8MM)	M.CAM-ERK-BC-013
8	POWER SOURCE	M.ELK-MUH-006
9	TERMINAL	M.ELK-KLM-019

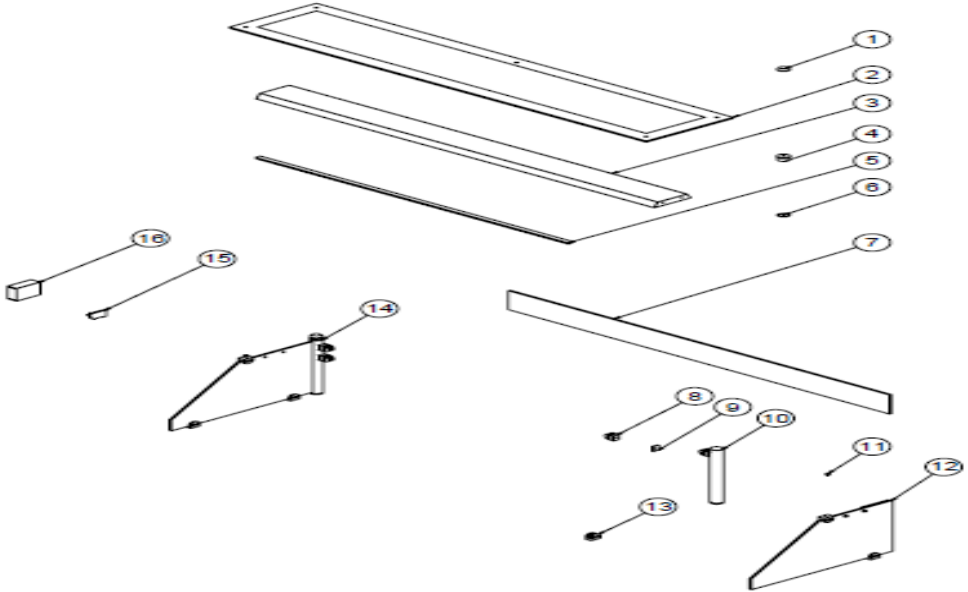
## G SPARE PART LIST-EXPLODING DRAWING



PRODUCT CODE: EMP.BEH.50.USC.T		
NO	PRODUCT NAME	P.CODE
1	TOP CAM ( 1800x375)	M.CAM-ERK-026
2	TOP GLASS HOLDER	M.ENJ-ERK-PLS-136
3	DERLIN	M.MUH-039
4	LAMP SHEET	YSC-ERK.BEH-LZ-0011
5	LED	M.ELK-LED-010
6	ORING (3x27)	M.CNT-ORG-010
7	SIDE GLASS (1720*260)	M.CAM-ERK-028
8	LAMP SHEET	YSC-ERK.BEH-LZ-0012
9	WINDSCREEN (1648*400)	M.CAM-ERK-027
10	PLUG	M.AKS-GNL-005
11	SUCTION CUPS	ERK.M.AKS-GNL-008
12	SIDE GLASS (610*400)	M.CAM-ERK-019
13	PIPE Ø42	YBR-ERK.BEH-KS-0002
14	SHELF HOLDER	ERK.M.AKS-GNL-011
15	SHELF HOLDER	M.AKS-GNL-006
16	PIPE Ø42	YBR-ERK.BEH-KS-0001
17	POWER SOURCE	M.ELK-MUH-006
18	TERMINAL	M.ELK-KLM-019

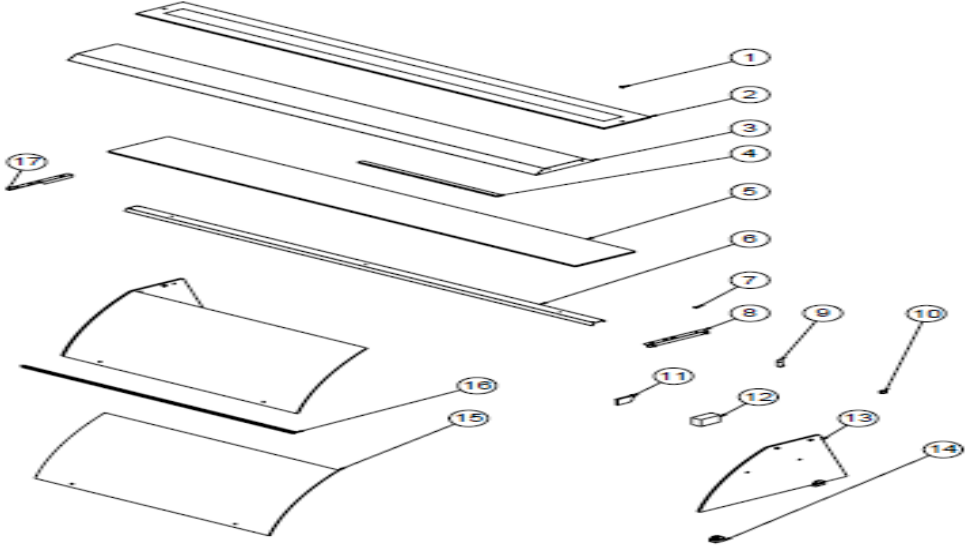
# BAIN MARIE SERVICE UNITS

## G SPARE PART LIST-EXPLODING DRAWING



PRODUCT CODE: EMP.BEH.50.USC.Y		
NO	PRODUCT NAME	P.CODE
1	TOP GLASS HOLDER	M.ENJ-ERK-PLS-136
2	TOP CAM ( 1800x375)	M.CAM-ERK-026
3	LAMP SHEET	YSC-ERK.BEH-LZ-0011
4	DERLIN	M.MUH-039
5	LED	M.ELK-LED-010
6	ORING (3x27)	M.CNT-ORG-010
7	FRONT HALF GLASS 1648*150	M.CAM-ERK-049
8	SHELF HOLDER	M.AKS-GNL-006
9	SHELF HOLDER	ERK.M.AKS-GNL-011
10	PIPE Ø42	YBR-ERK.BEH-KS-0004
11	PLUG	M.AKS-GNL-005
12	SIDE GLASS (610*400*8MM)	M.CAM-ERK-045
13	SHELF HOLDER	M.AKS-GNL-006
14	PIPE Ø42	YBR-ERK.BEH-KS-0003
15	TERMINAL	M.ELK-KLM-019
16	POWER SOURCE	M.ELK-MUH-006

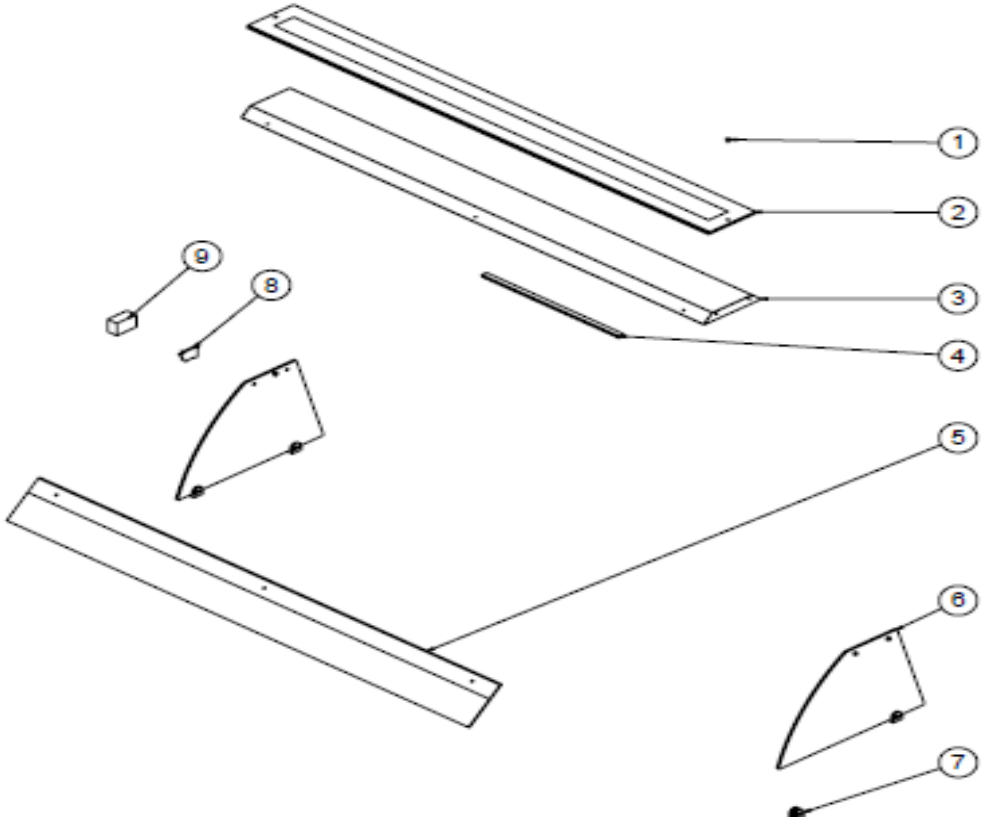
## G SPARE PART LIST-EXPLODING DRAWING



PRODUCT CODE: EMP.BEH.70.BC.T		
NO	PRODUCT NAME	P.CODE
1	PLUG	M.AKS-GNL-005
2	TOP GLASS ( 2020x200x10 mm )	M.CAM-ERK-BC-014
3	LAMP SHEET	YSC-ERK.BEH-LZ-0046
4	LED	M.ELK-LED-007
5	SIDE CAM 2020*260	M.CAM-ERK-031
6	LAMP SHEET	YSC-ERK.BEH-LZ-0014
7	SUCTION CUPS	ERK.M.AKS-GNL-008
8	SHELF LAMP SHEET RIGHT	YSC-ERK.BSS2-LZ-0037
9	HINGE TOP	YTL-ERK.BSS-KS-0001
10	HINGE BOTTOM	YTL-ERK.BSS-KS-0002
11	TERMINAL	M.ELK-KLM-019
12	POWER SOURCE	M.ELK-MUH-007
13	SIDE GLASS (640*426*8MM)	M.CAM-ERK-BC-001
14	SHELF HOLDER	M.AKS-GNL-006
15	WINDSCREEN 1009*519	M.CAM-ERK-BC-015
16	HANDLE PROFILE	HPR-ALM-OZL-004
17	LAMP SHEET LEFT	YSC-ERK.BSS2-LZ-0038

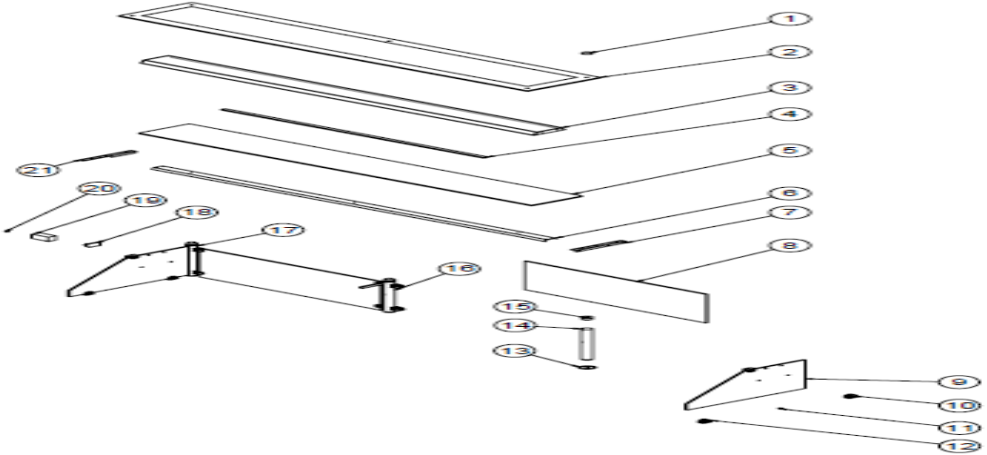
# BAIN MARIE SERVICE UNITS

## G SPARE PART LIST-EXPLODING DRAWING



PRODUCT CODE: EMP.BEH.70.BC.Y		
NO	PRODUCT NAME	P.CODE
1	PLUG	M.AKS-GNL-005
2	TOP GLASS (2020*205*8MM)	M.CAM-ERK-BC-033
3	LAMP SHEET	YSC-ERK.BEH-LZ-0082
4	LED	M.ELK-LED-007
5	WINDSCREEN (2020*200*8MM)	M.CAM-ERK-BC-034
6	SIDE GLASS (640*426 8MM)	M.CAM-ERK-BC-027
7	SHELF HOLDER	M.AKS-GNL-006
8	TERMINAL	M.ELK-KLM-019
9	POWER SOURCE	M.ELK-MUH-006

## G SPARE PART LIST-EXPLODING DRAWING



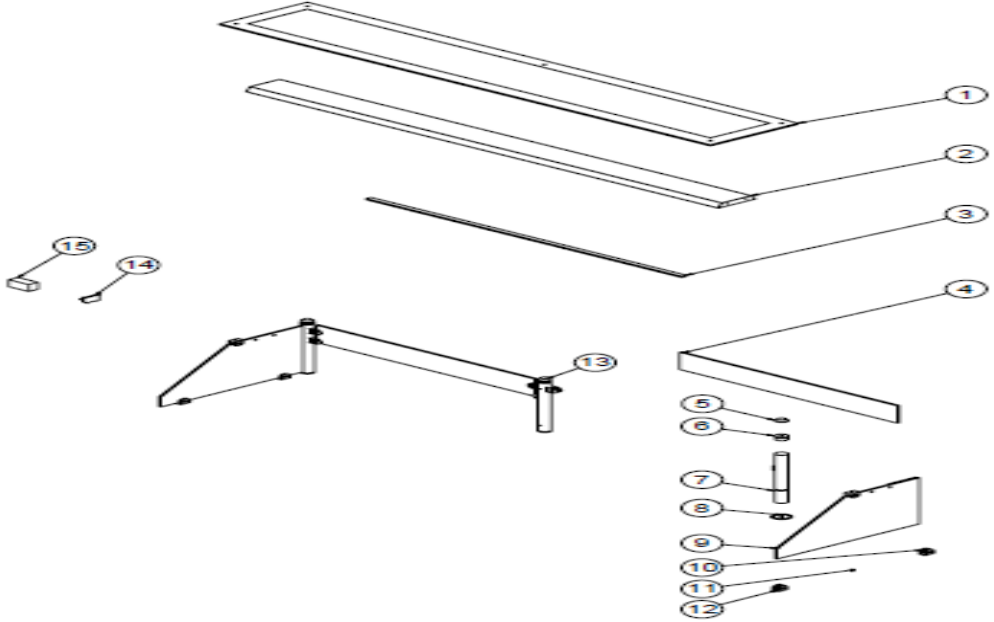
PRODUCT CODE: EMP.BEH.70.USC.T

NO	PRODUCT NAME	P.CODE
1	TOP GLASS HOLDER	M.ENJ-ERK-PLS-136
2	TOP GLASS ( 2100x375x10 mm )	M.CAM-ERK-029
3	LAMP SHEET	YSC-ERK.BEH-LZ-0013
4	LED	M.ELK-LED-007
5	SIDE CAM 2020*260	M.CAM-ERK-031
6	LAMP SHEET	YSC-ERK.BEH-LZ-0014
7	SHELF LAMP SHEET RIGHT	YSC-ERK.BSS2-LZ-0037
8	WINDSCREEN 932*400	M.CAM-ERK-030
9	SIDE GLASS (610*400)	M.CAM-ERK-019
10	SHELF HOLDER	ERK.M.AKS-GNL-011
11	PLUG	M.AKS-GNL-005
12	SHELF HOLDER	M.AKS-GNL-006
13	ORING (3x27)	M.CNT-ORG-010
14	PIPE Ø42	YBR-ERK.BEH-KS-0001
15	DERLIN	M.MUH-039
16	PIPE Ø42	YBR-ERK.BEH-KS-0005
17	PIPE Ø42	YBR-ERK.BEH-KS-0002
18	TERMINAL	M.ELK-KLM-019
19	POWER SOURCE	M.ELK-MUH-007
20	SUCTION CUPS	ERK.M.AKS-GNL-008
21	LAMP SHEET LEFT	YSC-ERK.BSS2-LZ-0038



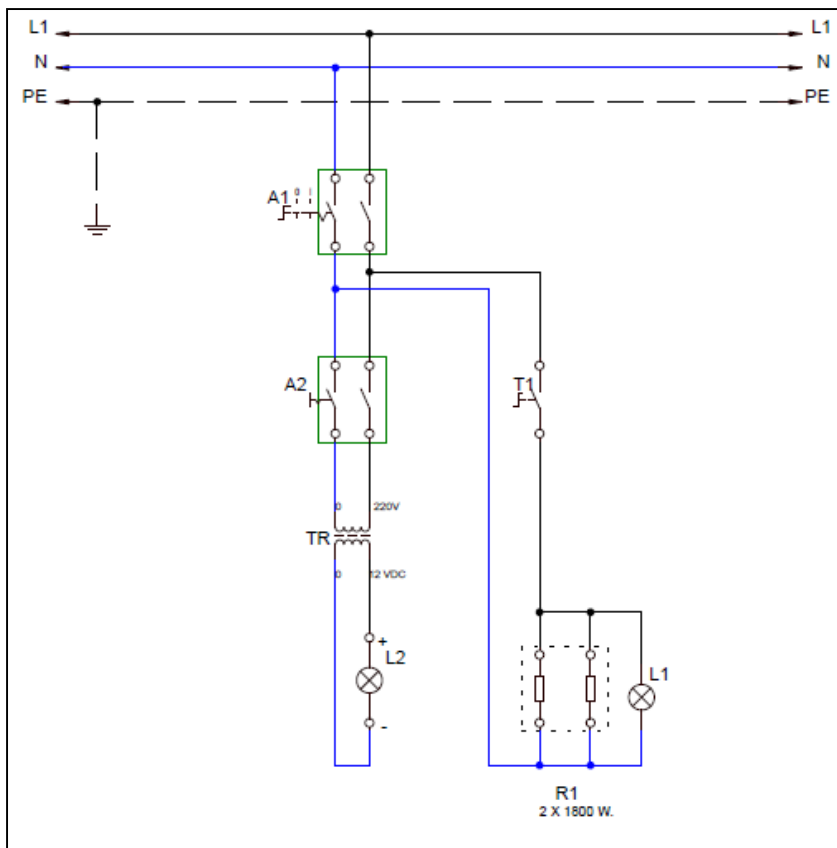
# BAIN MARIE SERVICE UNITS

## G SPARE PART LIST-EXPLODING DRAWING



PRODUCT CODE: EMP.BEH.70.USC.Y		
NO	PRODUCT NAME	P.CODE
1	TOP GLASS ( 2100x375x10 mm )	M.CAM-ERK-029
2	LAMP SHEET	YSC-ERK.BEH-LZ-0013
3	LED	M.ELK-LED-007
4	FRONT HALF GLASS 932*150	M.CAM-ERK-050
5	TOP GLASS HOLDER	M.ENJ-ERK-PLS-136
6	DERLIN	M.MUH-039
7	PIPE Ø42	YBR-ERK.BEH-KS-0003
8	ORING (3x27)	M.CNT-ORG-010
9	SIDE GLASS (610*400*8MM)	M.CAM-ERK-045
10	SHELF HOLDER	M.AKS-GNL-006
11	PLUG	M.AKS-GNL-005
12	SHELF HOLDER	ERK.M.AKS-GNL-011
13	PIPE Ø42	YBR-ERK.BEH-KS-0004
14	TERMINAL	M.ELK-KLM-019
15	POWER SOURCE	M.ELK-MUH-007

## H ELECTRIC CIRCUIT SCHEMA

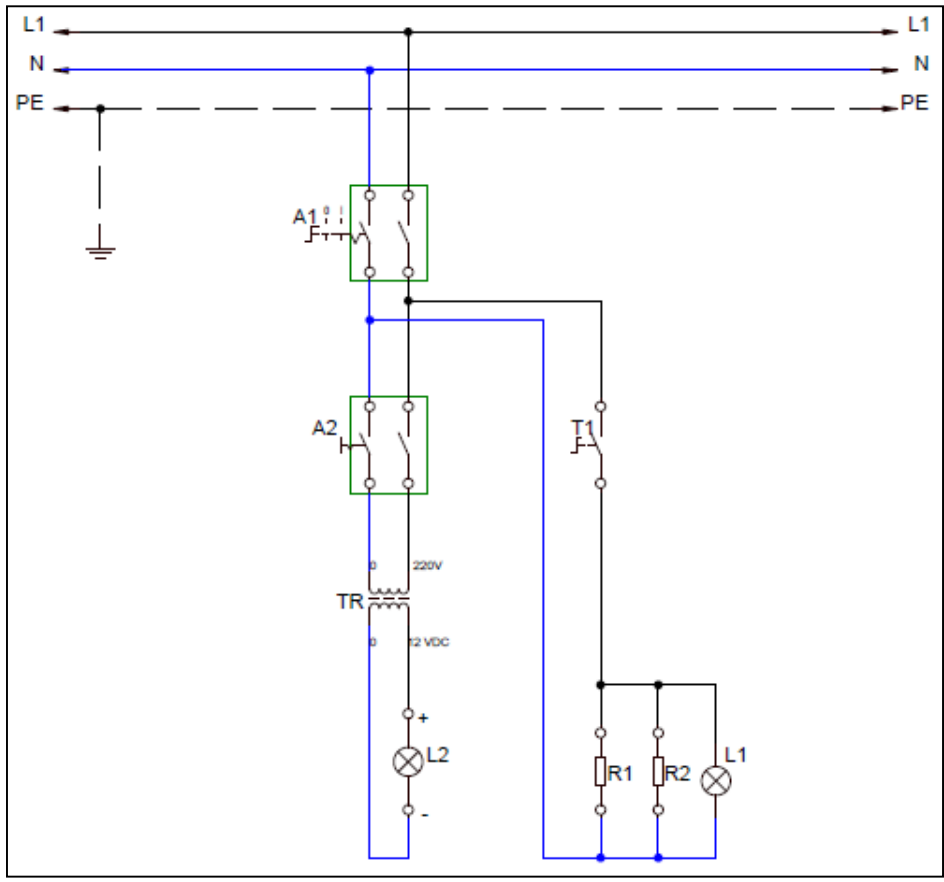


EMP.BEH.05 –EMP.BEH.10

A2	T1	TR	L1	L2	R1	A1
Large lighted 0-1 switch	Thermostat 30-90°C	LED transformer 220/12 VDC.5A	Thermostat lamp	Lighting lamp	Lower resistance 2x1800W 220V	0-1 ON/OFF switch 16A

# BAIN MARIE SERVICE UNITS

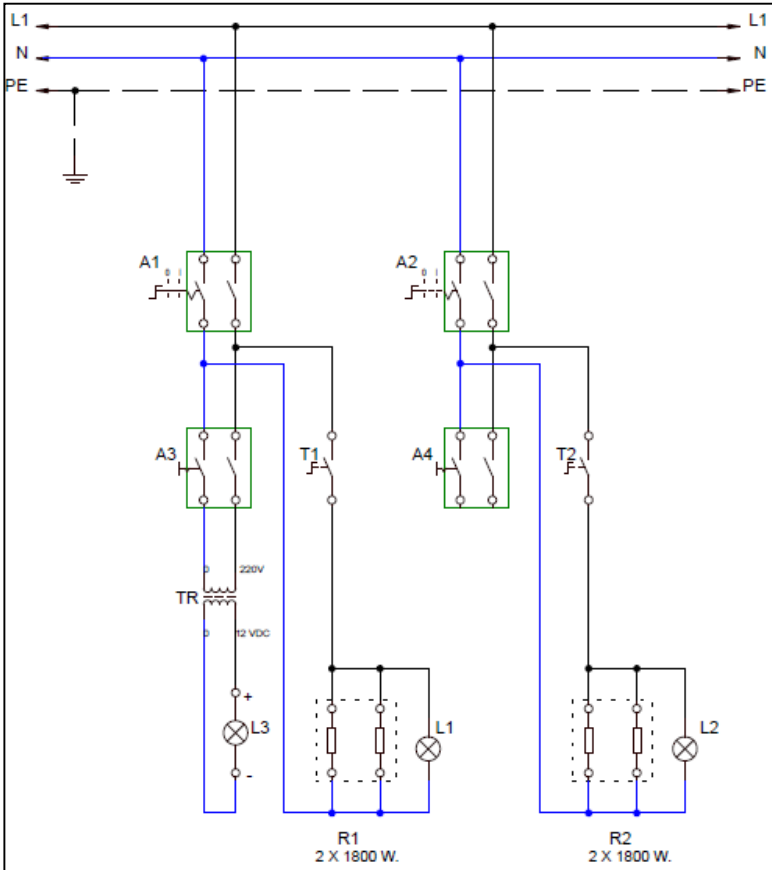
## H ELECTRIC CIRCUIT SCHEMA



EMP.BEH.30- EMP.BEH.50

A2	T1	TR	L1	L2	R1.R2.	A1
Large lighted 0-1 switch	Thermostat 30-90°C	LED transformer 220/12 VDC.5A	Thermostat Lamp	Lighting lamp	Lower resistance 1750W 220V	0-1 ON/OFF Switch 16A

## H ELECTRIC CIRCUIT SCHEMA



EMP.BEH.70

A3-A4	T1-T2	L1-L2	L3	R1.R2.	A2-A3
Large lighted 0-1 switch	Thermostat 30-90°C	Thermostat lamp	Lighting lamp	Lower resistance 2X1800W 220V	0-1 ON/OFF Switch 16A