



# SERVICE UNITS-TOP SHELF-SLIDING TRAY

## CONTENTS

---

<b>A</b>	<b>GENERAL INFORMATION .....</b>	<b>Page 2</b>
A1	PRODUCT DESCRIPTION .....	Page 3
A2	TECHNICAL INFORMATION .....	Page 3
A3	TRANSPORTATION .....	Page 4
A4	UNPACKING .....	Page 4
<b>B</b>	<b>INSTALLATION .....</b>	<b>Page 4</b>
<b>C</b>	<b>SAFETY INSTRUCTIONS .....</b>	<b>Page 5</b>
<b>D</b>	<b>OPERATION .....</b>	<b>Page 6</b>
<b>E</b>	<b>CLEANING &amp; MAINTENANCE .....</b>	<b>Page 7</b>
<b>F</b>	<b>TROUBLESHOOTING.....</b>	<b>Page 8</b>
<b>G</b>	<b>SPARE PART LIST- EXPLODING DRAWING .....</b>	<b>Page 9</b>
<b>H</b>	<b>ELECTRIC CIRCUIT SCHEMA .....</b>	<b>Page 17</b>

## A GENERAL INFORMATION

---

Before installing the appliance, read operation and maintenance instructions carefully. Wrong installation and part changing may damage the product or may cause injury on people. These are not in our company's responsibility to damage the appliance intentionally, negligence, detriments because of disobeying instructions and regulations, wrong connections. Unauthorized intervention to appliance invalidates the warranty.

1. This instruction manual should be kept in a safe place for future reference.
2. **Installation should be made in accordance with ordinances and security rules of that country by a qualified service personnel.**
3. This appliance has to be used by trained person.
4. Please turn off the appliance immediately in the event of malfunction or failure. The appliance should be repaired only by authorized service personnel. Please demand original spare part.

# SERVICE UNITS-TOP SHELF-SLIDING TRAY

## A1 PRODUCT DESCRIPTION

\*The Professional Service Unit-Top Shelf-Sliding Tray ,that provides high efficiency has been designed to be used in industrial kitchen.

Code	Dimensions (mm)	Ağırlık (kg)	Packaging Dimensions (mm)
EMP.BEN.31	1500x790x850/1350	99	1600x930x1220/1520
EMP.BEN.41	1800x790x850/1350	118	2100x930x1220/1520
EMP.BEN.31.AD	1500x790x850/1350	99	1600x930x1220/1552
EMP.BEN.41.AD	1800x790x850/1350	118	2100x930x1220/1552
EMP.BKU.10	800x790x850/1350	75	930x900x1220/1520
EMP.BKU.10.AH	800x790x850/1350	75	930x900x1220/1520

## A2 TECHNICAL INFORMATION

Code	Capacity (Ad/Küvet )	Strength (Kw)	Operatin g voltage (V)	Cable cross section (mm <sup>2</sup> )	Insuranc e Selection (A)	Accessorie s
EMP.BEN.31	3 Sıcak+ 1 Nötr	3,6	220-240	3x2,5	3x16 PAKO ŞALTER	1. 1. Woode n decor 2. 2. Flat glass 3. 3. Convex glass Ahşap dekor 4. 4. Düz cam 5. 5. Bombe cam
EMP.BEN.41	4 Sıcak+ 1 Nötr	3,6	220-240	3x2,5	3x16 PAKO ŞALTER	
EMP.BEN.31.A D	3 Sıcak+ 1 Nötr	3,6	220-240	3x2,5	3x16 PAKO ŞALTER	
EMP.BEN.41.A D	4 Sıcak+ 1 Nötr	3,5	220-240	3x2,5	3x16 PAKO ŞALTER	
EMP.BKU.10	2/1 150gn					
EMP.BKU.10.A H						



## SERVICE UNITS-TOP SHELF-SLIDING TRAY

### A3 TRANSPORTATION

---

\*This appliance can not be moved by hand from area to area. It must be moved on pallet with forklift truck.

### A4 UNPACKING

---

\*Please unpack the package according to the security codes and ordinances of current country and get rid from the pack. Parts which contacts with food are produced by stainless steel. All plastic parts are marked by material's symbol.

\*Please check that all the parts of appliance had come completely and if they are damaged or not during the shipping.

### B INSTALLATION

---

\*Please place the product to straight and sturdy ground, please take necessary steps against possibility of overturn.

\*Technician who will serve for installation and service for the appliance must be professional on this subject and must have installation and service licenses by the company.

\*Connection to Electric Power Supply must be done by authorized person.

\*Please be sure that the voltage connected to appliance must be equal with the voltage which is on appliance's label.



This appliance must be connected to an earthed outlet in accordance with safety rules and standard.










\*Appliance's earthing must be connected to earthing line on panel which is nearest to electric installation.

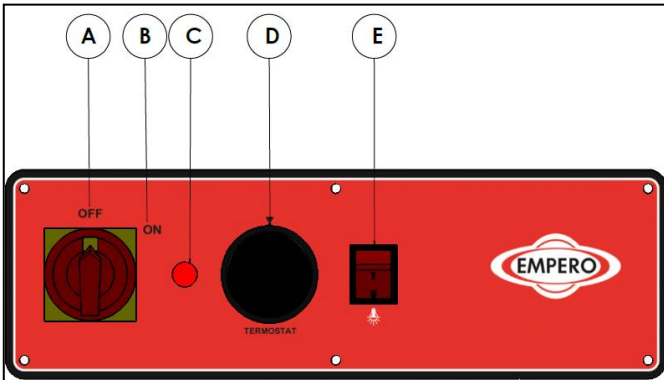
\*Connection to the main fuse and leak current fuse must be done in accordance with the current regulations.

# SERVICE UNITS-TOP SHELF-SLIDING TRAY

## C SAFETY INSTRUCTIONS

---

-  \*Do not use the appliance in insufficient lighted place.
-  \*Do not touch the moving attachments while the appliance operates.
-  \*Do not install the appliance in the presence of flammable or explosive materials.
-  \*Do not operate the appliance when the machine is empty.
-  \*Do not load so less or more than appliance's capacity.
-  \*Do not attempt to use the appliance without suitable protective equipments.
-  \*Because of any reason if there is a fire or flame flare where the appliance is used,turn off all gas valves and electric contactor switch quickly and use fire extinguisher .Never use water to extinguish the fire.
-  \*All the damages because of not having earthing connection will not be on warranty.
-  \*Do not salt away materials onto the food unit shelf.

**D OPERATION****\*Control Panel;**

- A : OFF position
- B : ON position
- C : Signal lamp
- D : Thermostat
- E : Lamp Button

**\*Operating;**

- Clean the outer surface of the appliance and material tanks and dry before first use.
- Plug in the appliance.
- Add enough water to the tank as it's capacity.
- Switch to (I) position and set desired heat.
- Put the materials that will be kept hot and neutral into the tank.
- Turn on the lighting lamp according to demand.
- After the operation is completed,unplug the appliance.

## SERVICE UNITS-TOP SHELF-SLIDING TRAY

### **E      CLEANING & MAINTENANCE**

---

#### ➤ **CLEANING AND MAINTENANCE AFTER EVERY USE**

- Always turn off the appliance and disconnect from the power supply before cleaning.
- Clean the showcase of the appliance with nonabrasive detergent and hot water and dry it with soft cloth.
- Wash the bain marie unit and upper shelves with hot soapy water and plastic brush. Then rinse it with clean hot water.
- Drain the water tank by turning on drainage valve and clean it. Before the draining the water, leave it to be cooled.
- Do not wash the appliance with water. Otherwise electric motor may get damaged.

#### ➤ **PERIODIC CLEANING AND MAINTENANCE**

- Maintenance should be done by qualified person.
- Make the appliance's periodic cleaning once in 15 days.
- Clean the appliance's valves and connections with hot soapy water and brush according to frequency of use. Then rinse it with clean water.



## SERVICE UNITS-TOP SHELF-SLIDING TRAY

### F TROUBLESHOOTING

<b>THE APPLIANCE DOESN'T OPERATE</b>	<ol style="list-style-type: none"><li>1. Check that if the appliance is plugged in or not.</li><li>2. Check the electric connections.</li><li>3. Check that if the fuse is on or not.</li></ol>
--------------------------------------	---

<b>THE APPLIANCE STOPPED</b>	<ol style="list-style-type: none"><li>1. The appliance can stop due to low voltage. In this situation check the voltage.</li><li>2. When it reaches desired heat, the thermostat control stops the heat automatically during the heating. When the temperature is reduced, the heaters step in again.</li></ol>
------------------------------	---

<b>THE MATERIALS ARE NOT KEPT HOT.</b>	<ol style="list-style-type: none"><li>1. Check the heating system.</li><li>2. Check if there is enough water on the tank or not.</li><li>3. Check the drainage valve.</li></ol>
--	---

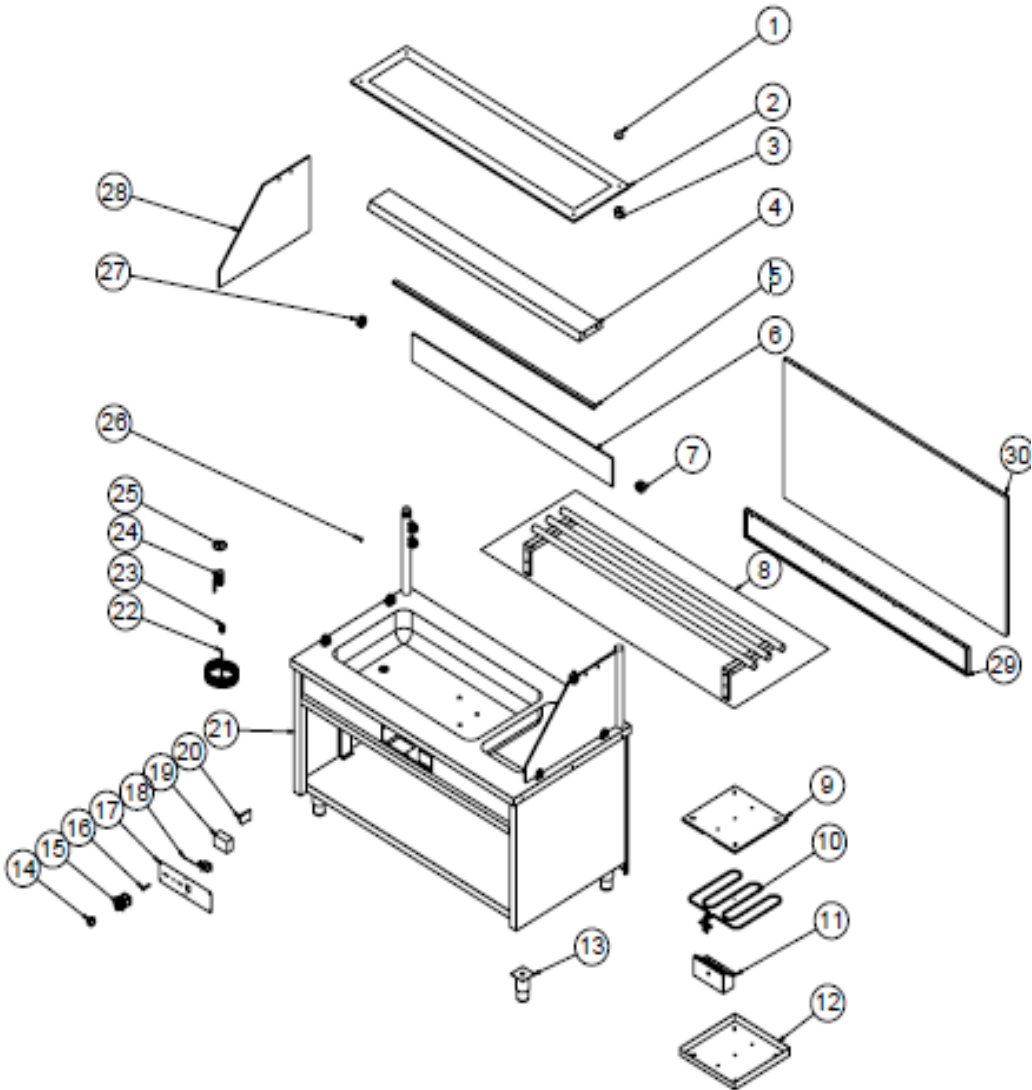
<ul style="list-style-type: none"><li>• If the materials are not kept at suitable quality</li><li>• If any function of security doesn't work<ul style="list-style-type: none"><li>➤ Do not use the appliance.</li></ul></li></ul>
---

**\*If these problems are still going on, contact with our authorized services.**



# SERVICE UNITS-TOP SHELF-SLIDING TRAY

## G SPARE PART LIST- EXPLODING DRAWINGS



# SERVICE UNITS-TOP SHELF-SLIDING TRAY

## G SPARE PART LIST- EXPLODING DRAWINGS

PRODUCT CODE: EMP.BEN.31		
NO	PRODUCT NAME	P.CODE
1	TOP GLASS HOLDER	M.ENJ-ERK-PLS-136
2	TOP GLASS (1500*375)	M.CAM-ERK-023
3	DERLIN	M.MUH-039
4	LAMP SHEET	YSC-ERK.BSS4-LZ-0021
5	LED	M.ELK-LED-002
6	FRONT HALF GLASS 1348*150	M.CAM-ERK-048
7	SHELF HOLDER	M.AKS-GNL-006
8	TRAY SHIFT	ARA-ERK.BEH-0006
9	RESISTANCE BOTTOM SHEET	YSC-ERS.SB-LZ-0006
10	RESISTANCE	M.ELK-RZS-BRU-BEH-001
11	RESISTANCE COVER SHEET	YSC-ERK.BEH-PN-0009
12	RESISTANCE TOP SHEET	YSC-ERS.SB-LZ-0005
13	FOOT	ERK.M.AKS-AYK-INX-001
14	KEY	ERK.M.ELK-SLT-ANL-003
15	SWITCH	M.ELK-SLT-PKO-001
16	LAMP	ERK.M.ELK-LMB-SNY-002
17	TICKET	M.AKS-ETK-LKS-ERK-002
18	THERMOSTAT AND BUTTON	M.ELK-MEK-TRM1-012
19	POWER SOURCE	M.ELK-MUH-006
20	TERMINAL	M.ELK-KLM-019
21	CHASSIS	-
22	3*2.5 MM CABLE	ERK.M.ELK-PWR-PBK-005
23	CABLE GLAND	ERK.M.ELK-RKR-PLS-003
24	VALVE	ERK.M.MEK-TES-KVN-002
25	ORING (3x27)	M.CNT-ORG-010
26	PLUG	M.AKS-GNL-005
27	SHELF HOLDER	ERK.M.AKS-GNL-011
28	SIDE GLASS (610*400*8MM)	M.CAM-ERK-045

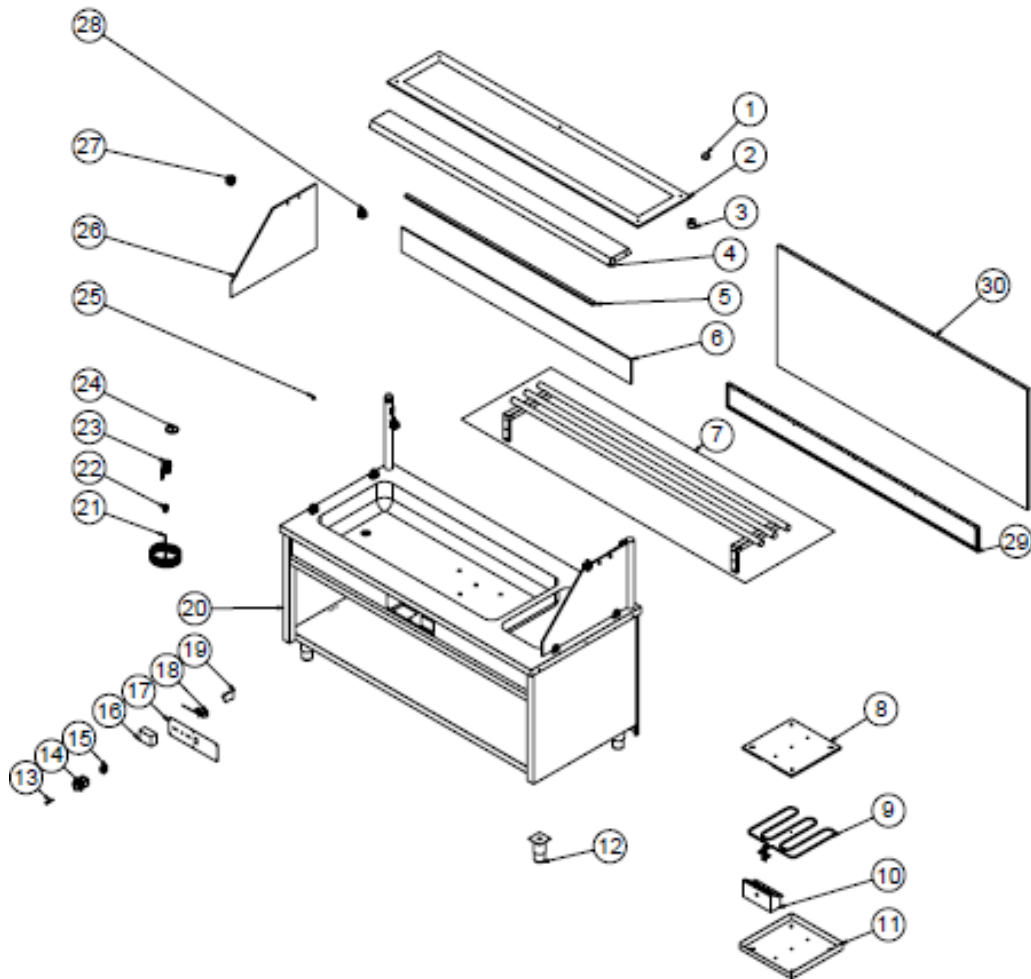
# SERVICE UNITS-TOP SHELF-SLIDING TRAY

## G SPARE PART LIST- EXPLODING DRAWINGS

PRODUCT CODE: EMP.BEN.31AD		
NO	PRODUCT NAME	P.CODE
1	TOP GLASS HOLDER	M.ENJ-ERK-PLS-136
2	TOP GLASS (1500*375)	M.CAM-ERK-023
3	DERLIN	M.MUH-039
4	LAMP SHEET	YSC-ERK.BSS4-LZ-0021
5	LED	M.ELK-LED-002
6	FRONT HALF GLASS 1348*150	M.CAM-ERK-048
7	SHELF HOLDER	M.AKS-GNL-006
8	TRAY SHIFT	ARA-ERK.BEH-0006
9	RESISTANCE BOTTOM SHEET	YSC-ERS.SB-LZ-0006
10	RESISTANCE	M.ELK-RZS-BRU-BEH-001
11	RESISTANCE COVER SHEET	YSC-ERK.BEH-PN-0009
12	RESISTANCE TOP SHEET	YSC-ERS.SB-LZ-0005
13	FOOT	ERK.M.AKS-AYK-INX-001
14	KEY	ERK.M.ELK-SLT-ANL-003
15	SWITCH	M.ELK-SLT-PKO-001
16	LAMP	ERK.M.ELK-LMB-SNY-002
17	TICKET	M.AKS-ETK-LKS-ERK-002
18	THERMOSTAT AND BUTTON	M.ELK-MEK-TRM1-012
19	POWER SOURCE	M.ELK-MUH-006
20	TERMINAL	M.ELK-KLM-019
21	CHASSIS	-
22	3*2.5 MM CABLE	ERK.M.ELK-PWR-PBK-005
23	CABLE GLAND	ERK.M.ELK-RKR-PLS-003
24	VALVE	ERK.M.MEK-TES-KVN-002
25	ORING (3x27)	M.CNT-ORG-010
26	PLUG	M.AKS-GNL-005
27	SHELF HOLDER	ERK.M.AKS-GNL-011
28	SIDE GLASS (610*400*8MM)	M.CAM-ERK-045
29	BASE SHEET	YSC-ERK.BEH-PN-0022
30	WOOD (149.5*74.5)	M.MBL-ERK-009

**SERVICE UNITS-TOP SHELF-SLIDING TRAY**

**G SPARE PART LIST- EXPLODING DRAWINGS**



EMP.BEN.41



# SERVICE UNITS-TOP SHELF-SLIDING TRAY

## G SPARE PART LIST- EXPLODING DRAWINGS

PRODUCT CODE: EMP.BEN.41		
NO	PRODUCT NAME	P.CODE
1	TOP GLASS HOLDER	M.ENJ-ERK-PLS-136
2	TOP CAM ( 1800x375)	M.CAM-ERK-026
3	DERLIN	M.MUH-039
4	LAMP SHEET	YSC-ERK.BEH-LZ-0011
5	LED	M.ELK-LED-010
6	FRONT HALF GLASS 1648*150	M.CAM-ERK-049
7	TRAY SHIFT	ARA-ERK.BEH-0007
8	RESISTANCE BOTTOM SHEET	YSC-ERS.SB-LZ-0006
9	RESISTANCE	M.ELK-RZS-BRU-SB-001
10	RESISTANCE COVER SHEET	YSC-ERK.BEH-PN-0009
11	RESISTANCE TOP SHEET	YSC-ERS.SB-LZ-0005
12	FOOT	ERK.M.AKS-AYK-INX-001
13	LAMP	ERK.M.ELK-LMB-SNY-002
14	SWITCH	M.ELK-SLT-PKO-001
15	KEY	ERK.M.ELK-SLT-ANL-003
16	POWER SOURCE	M.ELK-MUH-006
17	TICKET	M.AKS-ETK-LKS-ERK-002
18	THERMOSTAT AND BUTTON	M.ELK-MEK-TRM1-012
19	TERMINAL	ERK.M.ELK-KLM-028
20	CHASSIS	-
21	3*2.5 MM CABLE	ERK.M.ELK-PWR-PBK-005
22	CABLE GLAND	ERK.M.ELK-RKR-PLS-003
23	VALVE	ERK.M.MEK-TES-KVN-002
24	ORING (3x27)	M.CNT-ORG-010
25	PLUG	M.AKS-GNL-005
26	SIDE GLASS (610*400*8MM)	M.CAM-ERK-045
27	SHELF HOLDER	ERK.M.AKS-GNL-011
28	SHELF HOLDER	M.AKS-GNL-006

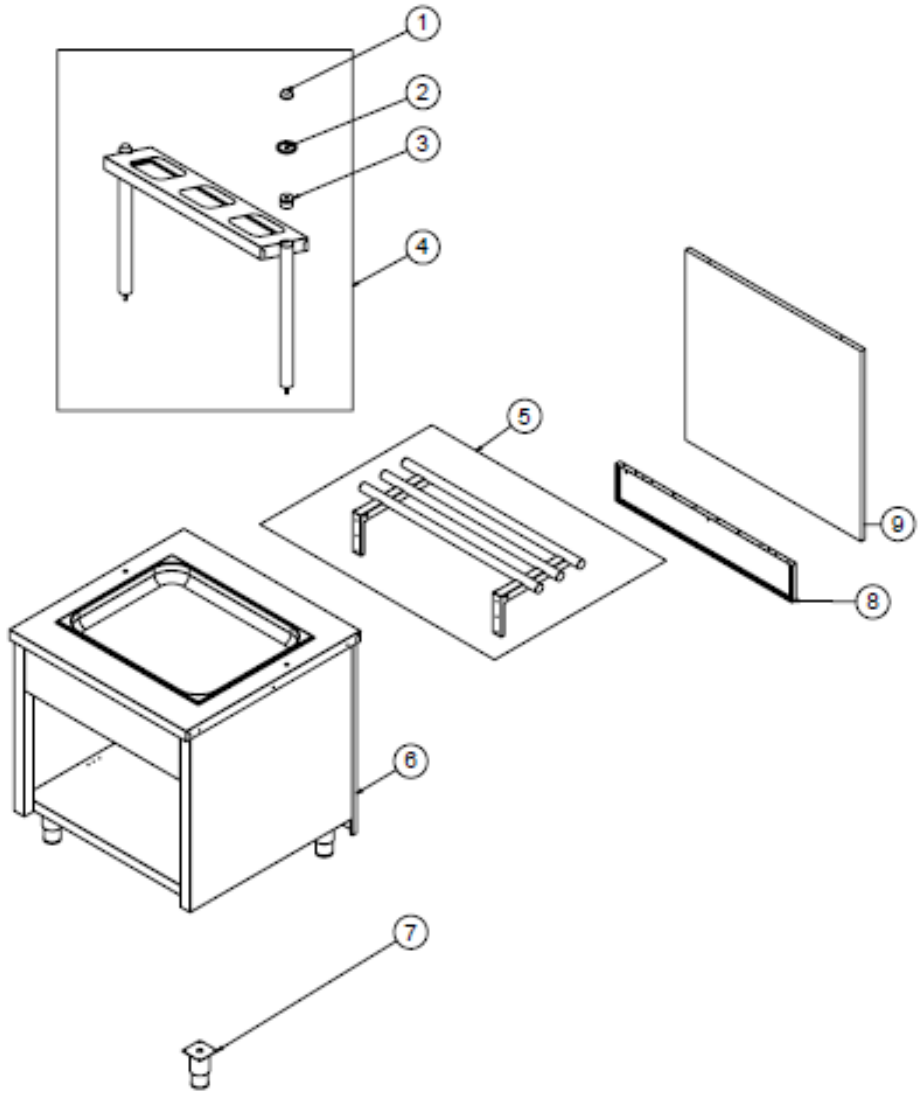
# SERVICE UNITS-TOP SHELF-SLIDING TRAY

## G SPARE PART LIST- EXPLODING DRAWINGS

PRODUCT CODE: EMP.BEN.41AD		
NO	PRODUCT NAME	P.CODE
1	TOP GLASS HOLDER	M.ENJ-ERK-PLS-136
2	TOP CAM ( 1800x375)	M.CAM-ERK-026
3	DERLIN	M.MUH-039
4	LAMP SHEET	YSC-ERK.BEH-LZ-0011
5	LED	M.ELK-LED-010
6	FRONT HALF GLASS 1648*150	M.CAM-ERK-049
7	TRAY SHIFT	ARA-ERK.BEH-0007
8	RESISTANCE BOTTOM SHEET	YSC-ERS.SB-LZ-0006
9	RESISTANCE	M.ELK-RZS-BRU-SB-001
10	RESISTANCE COVER SHEET	YSC-ERK.BEH-PN-0009
11	RESISTANCE TOP SHEET	YSC-ERS.SB-LZ-0005
12	FOOT	ERK.M.AKS-AYK-INX-001
13	LAMP	ERK.M.ELK-LMB-SNY-002
14	SWITCH	M.ELK-SLT-PKO-001
15	KEY	ERK.M.ELK-SLT-ANL-003
16	POWER SOURCE	M.ELK-MUH-006
17	TICKET	M.AKS-ETK-LKS-ERK-002
18	THERMOSTAT AND BUTTON	M.ELK-MEK-TRM1-012
19	TERMINAL	ERK.M.ELK-KLM-028
20	CHASSIS	-
21	3*2.5 MM CABLE	ERK.M.ELK-PWR-PBK-005
22	CABLE GLAND	ERK.M.ELK-RKR-PLS-003
23	VALVE	ERK.M.MEK-TES-KVN-002
24	ORING (3x27)	M.CNT-ORG-010
25	PLUG	M.AKS-GNL-005
26	SIDE GLASS (610*400*8MM)	M.CAM-ERK-045
27	SHELF HOLDER	ERK.M.AKS-GNL-011
28	SHELF HOLDER	M.AKS-GNL-006
29	BASE SHEET	YSC-ERK.BEH-PN-0026
30	WOOD (180.2*74.5)	M.MBL-ERK-264

# SERVICE UNITS-TOP SHELF-SLIDING TRAY

## G SPARE PART LIST- EXPLODING DRAWINGS



**SERVICE UNITS-TOP SHELF-SLIDING TRAY****G SPARE PART LIST- EXPLODING DRAWINGS**

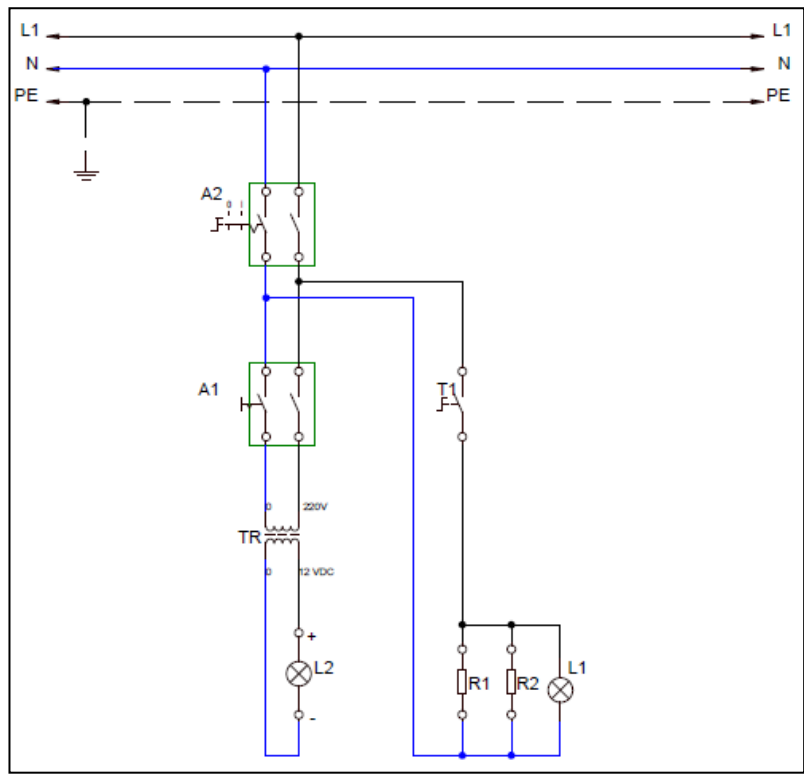
<b>PRODUCT CODE: EMP.BKU.10</b>		
<b>NO</b>	<b>PRODUCT NAME</b>	<b>P.CODE</b>
1	TOP GLASS HOLDER	M.ENJ-ERK-PLS-136
2	ORING (3x27)	M.CNT-ORG-010
3	DERLIN	M.MUH-039
4	Cutlery Holder	ARA-ERK.BKU-0001
5	TRAY SHIFT	ARA-ERK.BKU-0002
6	CHASSIS	-
7	FOOT	ERK.M.AKS-AYK-INX-001

<b>PRODUCT CODE: EMP.BKU.10AH</b>		
<b>NO</b>	<b>PRODUCT NAME</b>	<b>P.CODE</b>
1	TOP GLASS HOLDER	M.ENJ-ERK-PLS-136
2	ORING (3x27)	M.CNT-ORG-010
3	DERLIN	M.MUH-039
4	Cutlery Holder	ARA-ERK.BKU-0001
5	TRAY SHIFT	ARA-ERK.BKU-0002
6	CHASSIS	-
7	FOOT	ERK.M.AKS-AYK-INX-001
8	BASE SHEET	YSC-ERK.BEH-PN-0007
9	WOOD 80.2*74.5	M.MBL-ERK-442



# SERVICE UNITS-TOP SHELF-SLIDING TRAY

## H ELECTRIC CIRCUIT SCHEMA



TR	A1	A2	R1-R2	T1	L1	L2
LED Transformer 220/12 VDC.5A	Large lighted 0-1 lighting switch	0-1 On-Off Switch 16 A.	Lower heater resistance 2700W	Thermostat (30-90 °C)	Signal lamp	Lighting lamp