



# COLD SERVICE UNITS (REFRIGERATED)

## CONTENTS

---

<b>A</b>	<b>GENERAL INFORMATION</b> .....	<b>Page</b>	<b>2</b>
A1	PRODUCT DESCRIPTION.....	Page	3
A2	TECHNICAL INFORMATION .....	Page	3
A3	TRANSPORTATION .....	Page	4
A4	UNPACKING .....	Page	4
<b>B</b>	<b>INSTALLATION</b> .....	<b>Page</b>	<b>4</b>
<b>C</b>	<b>SAFETY INSTRUCTIONS</b> .....	<b>Page</b>	<b>5</b>
<b>D</b>	<b>OPERATION</b> .....	<b>Page</b>	<b>6</b>
<b>E</b>	<b>CLEANING &amp; MAINTENANCE</b> .....	<b>Page</b>	<b>7</b>
<b>F</b>	<b>TROUBLESHOOTING</b> .....	<b>Page</b>	<b>8</b>
<b>G</b>	<b>SPARE PART LIST- EXPLODING DRAWING</b> .....	<b>Page</b>	<b>9</b>
<b>H</b>	<b>ELECTRIC CIRCUIT SCHEMA</b> .....	<b>Page</b>	<b>33</b>

## A GENERAL INFORMATION

---

Before installing the appliance, read operation and maintenance instructions carefully. Wrong installation and part changing may damage the product or may cause injury on people. These are not in our company's responsibility to damage the appliance intentionally, negligence, detriments because of disobeying instructions and regulations, wrong connections. Unauthorized intervention to appliance invalidates the warranty.

1. This instruction manual should be kept in a safe place for future reference.
2. **Installation should be made in accordance with ordinances and security rules of that country by a qualified service personnel.**
3. This appliance has to be used by trained person.
4. Please turn off the appliance immediately in the event of malfunction or failure. The appliance should be repaired only by authorized service personnel. Please demand original spare part.

## COLD SERVICE UNITS (REFRIGERATED)

### A1 PRODUCT DESCRIPTION

\*The Professional Cold Service Units (Refrigerated) ,that provides high efficiency has been designed to be used in industrial kitchen.

Product Code	Dimensions (mm)	Weight (kg)	Packaging Dimensions (mm)
<b>EMP.BSS.20</b>	1250x790x850	86	1350x930x1220/1520
<b>EMP.BSS.40</b>	1500x790x850	100	1600x930x1220/1520
<b>EMP.BSS.60</b>	2000x790x850	120	2100x930x1220/1520
<b>EMP.BSS.80</b>	2550x790x850	140	2600x930x1220/1520

### A2 TECHNICAL INFORMATION

Product Code	Capacity	Power (KW)	TYPE OF GAS	Operating Voltage (V)	Cable (mm <sup>2</sup> )	Operating Range (°C)	Accessories
<b>EMP.BSS.20</b>	3x 1/1 GN	0,35	R290-A	220-230	3x1,5	0 / +5	*Wooden decor
<b>EMP.BSS.40</b>	4x 1/1 GN	0,45	R290-A	220-230	3x1,5	0 / +5	*Top shelf group
<b>EMP.BSS.60</b>	5x 1/1 GN	0,45	R290-A	220-230	3x1,5	0 / +5	*Tray sliding stand
<b>EMP.BSS.80</b>	6x1/1 GN	0,60	R290-A	220-230	3x1,5	0 / +5	*Convex glass *Granite stand

**A3 TRANSPORTATION**

---

\*This appliance can not be moved by hand from area to area. It must be moved on pallet with forklift truck.

**A4 UNPACKING**

---

\*Please unpack the package according to the security codes and ordinances of current country and get rid from the pack. Parts which contacts with food are produced by stainless steel. All plastic parts are marked by material's symbol.

\*Please check that all the parts of appliance had come completely and if they are damaged or not during the shipping.

**B INSTALLATION**

---

\*Please place the product to straight and sturdy ground, please take necessary steps against possibility of overturn.

\*Technician who will serve for installation and service for the appliance must be professional on this subject and must have installation and service licenses by the company.

\*Connection to Electric Power Supply must be done by authorized person.

\*Please be sure that the voltage connected to appliance must be equal with the voltage which is on appliance's label.



This appliance must be connected to an earthed outlet in accordance with safety rules and standard.

\*Appliance's earthing must be connected to earthing line on panel which is nearest to electric installation.











\*Connection to the main fuse and leak current fuse must be done in accordance with the current regulations.

\*If the 2 appliance will be placed adjacently, there must be at least 2 cm space between them. The Condensation is prevented.

## COLD SERVICE UNITS (REFRIGERATED)

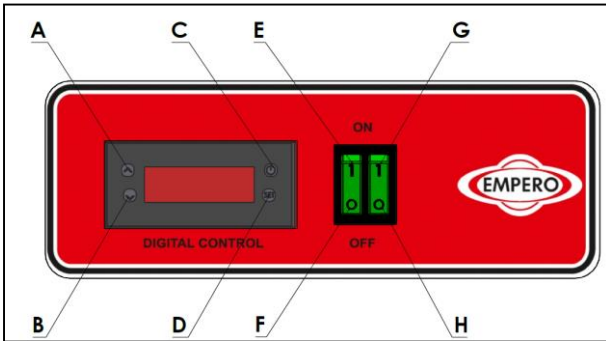
### C SAFETY INSTRUCTIONS

---

-  \*Do not use the appliance in insufficient lighted place.
-  \*Do not touch the moving attachments while the appliance operates.
-  \*Do not install the appliance in the presence of flammable or explosive materials.
-  \*Do not operate the appliance when the machine is empty.
-  \*Do not load so less or more than appliance's capacity.
-  \*Do not attempt to use the appliance without suitable protective equipments.
-  \*Because of any reason if there is a fire or flame flare where the appliance is used, turn off all gas valves and electric contactor switch quickly and use fire extinguisher. Never use water to extinguish the fire.
-  \*All the damages because of not having earthing connection will not be on warranty.
-  \*Prevent the appliance to take sunshine directly.
-  \*Do not place heavy objects on to the appliance.

## D OPERATION

### \*Control Panel;



- A : Degree increase
- B : Degree reduce
- C : Indicator ON/OFF
- D : SET approval button
- E : ON position
- F : OFF position
- G : Lamp ON position
- H : Lamp OFF position

### \*Operating;

- Clean the inner and outer surface of the appliance with warm cloth before first use. Then clean with wet cloth and dry. Wash the service containers and dry.
- Plug in the appliance.
- Switch to (I) position
- Activate lamp ON/OFF button for the inner lighting of the refrigerator.
- Set the appliance's temperature with up-down arrows.
- Operate the appliance for 12 hours when it is empty. at first use .Meanwhile do not open the lids.
- Insert the materials into the refrigerator and service containers.
- If the lids are opened often or left opened, these situations can effect the cooling of the products.
- When the appliance is not needed to be used, switch to (0) position and unplug the appliance.

## COLD SERVICE UNITS (REFRIGERATED)

### **E      CLEANING & MAINTENANCE**

---

#### ➤ **CLEANING AND MAINTENANCE AFTER EVERY USE**

- Always turn off the appliance and disconnect from the power supply before cleaning.
- Clean the outer surface of the appliance with moist cloth.
- Clean the inside of the appliance with moist cloth soapy cloth. Then clean it with wet cloth and dry. Wash the service units after every use.
- Pay attention the cleaning materials to be hygienic.
- Do not use abrasive cleaning chemicals as these can leave harmful residues.
- Do not clean the appliance by spraying water directly ,otherwise electric motor may get damaged.

#### ➤ **PERIODIC CLEANING AND MAINTENANCE**

- Maintenance should be done by qualified person.
- Clean the top shelf glass group with moist cloth according to frequency of use.
- Clean the upper lighting lamp with dry cloth in periodic times.
- Check the fan in periodic times and clean it.
- Clean the condenser at motor with a plastic rigid brush once in a month.



## COLD SERVICE UNITS (REFRIGERATED)

### F TROUBLESHOOTING

<b>THE APPLIANCE DOESN'T OPERATE</b>	<ol style="list-style-type: none"><li>1. Check if the appliance is plugged in.</li><li>2. Check the electrical connections and voltage.</li><li>3. Check if the fuse is on or off.</li></ol>
--------------------------------------	--

<b>THE APPLIANCE IS NOISY</b>	<ol style="list-style-type: none"><li>1. Check the motor.</li><li>2. If the connection pipes contact with compressor,remove it.</li></ol>
-------------------------------	---

<b>THE APPLIANCE STOPPED</b>	<ol style="list-style-type: none"><li>1. The appliance can stop due to low voltage.In this situation check the voltage.</li><li>2. If there is any leakage current at electric connections,the appliance stops.In this situation call the authorized service.</li></ol>
------------------------------	---

<b>INNER TEMPERATURE IS TOO HIGH</b>	<ol style="list-style-type: none"><li>1. Clean the condenser.</li><li>2. Check the air conditioning.</li><li>3. If the hot material is placed to cabinet,take it off.</li><li>4. If the door is left opened,close it.</li></ol>
--------------------------------------	---

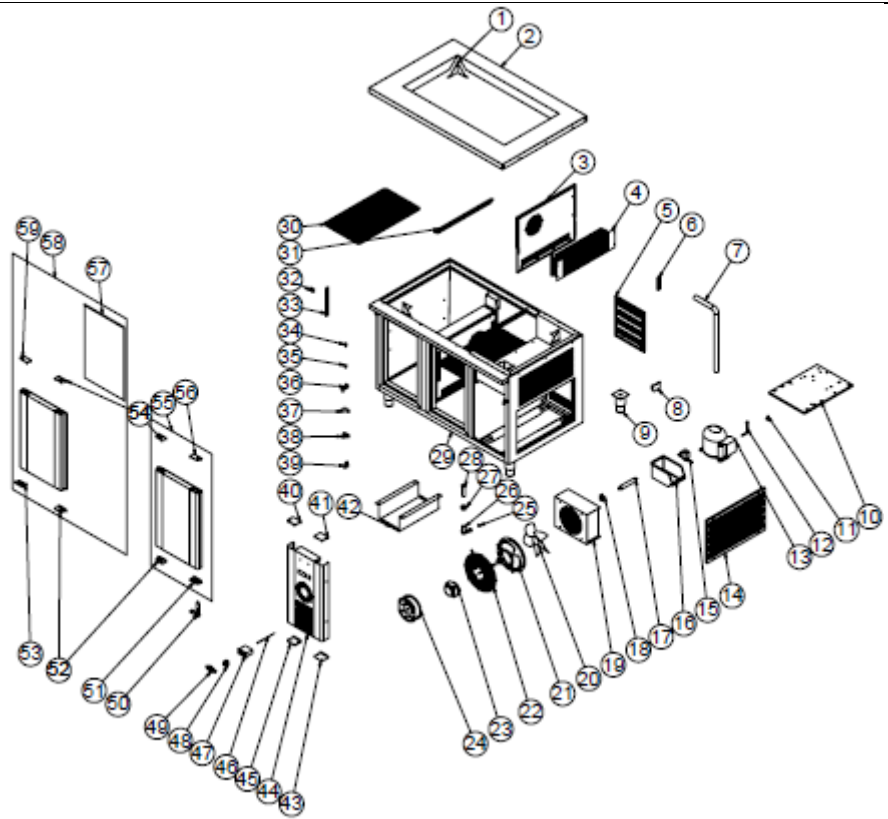
<ul style="list-style-type: none"><li>• If cooling is not done at suitable quality</li><li>• If any function of security doesn't work<ul style="list-style-type: none"><li>➤ Do not use the appliance.</li></ul></li></ul>
--

**\*If these problems are still going on,contact with our authorized services.**



# COLD SERVICE UNITS (REFRIGERATED)

## G SPARE PART LIST- EXPLODING DRAWINGS



**PRODUCT CODE: EMP.BSS.20**

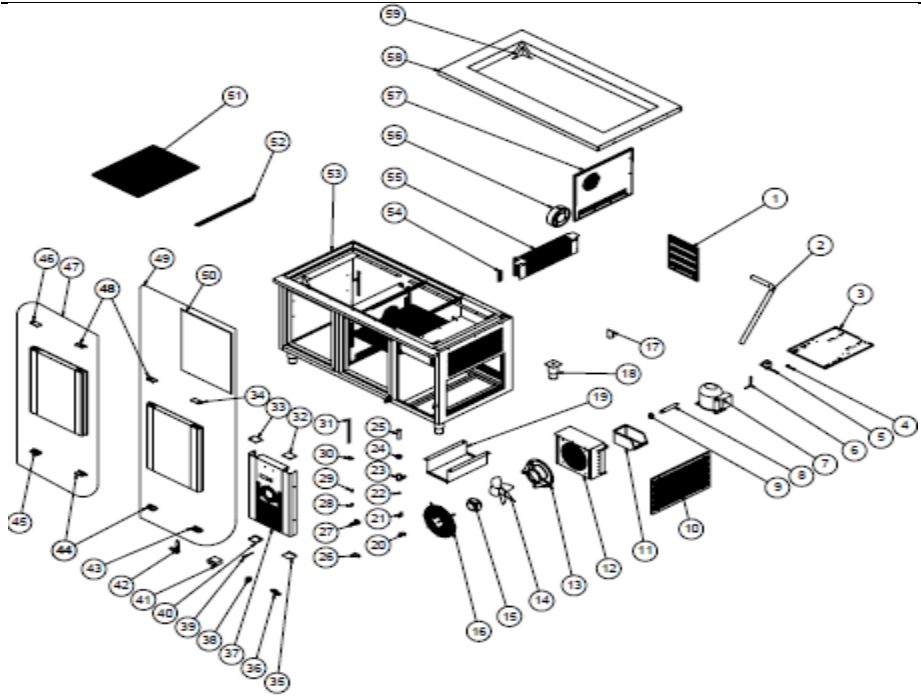
NO	PRODUCT NAME	P.CODE
1	TABLE PARTS SHEET	YSC-ERK.BSS2-LZ-0065
2	TOP TABLE SHEET	YSC-ERK.BSS2-LZ-0064
3	HOOD COVER SHEET	YSC-ERK.BSS2-PN-0171
4	EVAP	M.SOG-EVP-018
5	BACK COVER SHEET	YSC-ERK.BSS2-PN-0148
6	PROP PLASTIC	M.ENJ-ERK-PLS-017
7	HOSE	HTS-HRT-001
8	TERMINAL	M.ELK-KLM-013
9	FOOT	ERK.M.AKS-AYK-INX-001
10	ENGINE GROUP SHEET	YSC-ERK.7080-PN-0017
11	COPPER T 3/8	M.SOG-MUH-003

## COLD SERVICE UNITS (REFRIGERATED)

12	SIBO	M.SOG-MUH-001
13	COMPRESSOR	M.SOG-KMS-018
14	RIGHT OUTER SIDE COVER SHEET	YSC-ERK.BSS2-PN-0117
15	SELENOID VALF	ERK.M.ELK-SLN-VLF-001
16	TOOLS	ERK.M.MUH-003
17	DRAYER	M.SOG-DRY-004
18	HANDCUFF	M.PLS-ERK-003
19	CONDENSER	M.SOG-KDS-004
20	WING	M.ELK-HVL-FKN-004
21	FAN CIRCLE PLASTIC	M.ENJ-ERK-PLS-001
22	FAN CIRCLE WIRE	ERK.M.MUH-001
23	FAN MOTOR	ERK.M.ELK-MTR-FMT-002
24	FAN	ERK.M.ELK-HVL-KFN-001
25	PLUG	M.ENJ-ERK-PLS-026
26	EXPENSE PLASTIC	M.ENJ-ERK-PLS-030
27	NUT	M.ENJ-ERK-PLS-024
28	PIPE	M.ENJ-ERK-PLS-002
29	CHASSIS	-
30	33.5*58 WIRE SHELF	M.RAF-ERK-006
31	BATH TAP SHEET	YSC-ERK.BSS2-PN-0131
32	SHELF NAIL	M.RAF-ERK-002
33	SHELF STRUT	ERK.M.MUH-002
34	PIN	M.AKS-MNT-SC-005
35	BUSH PLASTIC	M.ENJ-ERK-PLS-022
36	HINGE	M.ENJ-ERK-PLS-010
37	UPPER RIGHT HINGE SHEET	M.AKS-MNT-SC-001
38	BOTTOM LEFT HINGE SHEET	M.AKS-MNT-SC-002
39	HOLDER PLASTIC	M.ENJ-ERK-PLS-009
40	TOP PLASTIC LEFT	M.ENJ-ERK-PLS-111
41	TOP LEFT PLASTIC	M.PLS-ERK-031
42	DRAIN PAN	YSC-ERK.BSS2-PN-0105
43	BOTTOM LEFT PLASTIC	M.PLS-ERK-032
44	ENGINE DOOR SHEET	YSC-ERK.BSS2-PN-0124
45	BOTTOM PLASTIC LEFT	M.ENJ-ERK-PLS-112
46	PROP	ERK.M.ELK-EDM-DGT-012
47	THERMOSTAT	M.ELK-EDM-DGT-039
48	0-1 CONDITION GREEN	M.ELK-SLT-ANL-004
49	HINGE	M.AKS-MNT-SC-007
50	HINGE BOTTOM PLASTIC RIGHT	M.ENJ-ERK-PLS-107
51	HAND PLASTIC BOTTOM	M.PLS-ERK-030
52	HINGE BOTTOM PLASTIC LEFT	M.ENJ-ERK-PLS-109
53	HAND PLASTIC TOP	M.PLS-ERK-029
54	COVER RIGHT	ARA-ERK.BSS2-0003-ALM-430S
55	HINGE TOP PLASTIC RIGHT	M.ENJ-ERK-PLS-108
56	GASKET (372 - 590 )	M.CNT-ERK-004
57	COVER LEFT	ARA-ERK.BSS2-0001-ALM-430S
58	HINGE TOP PLASTIC LEFT	M.ENJ-ERK-PLS-110
59	TABLE PARTS SHEET	YSC-ERK.BSS2-LZ-0065

# COLD SERVICE UNITS (REFRIGERATED)

## G SPARE PART LIST- EXLODING DRAWINGS



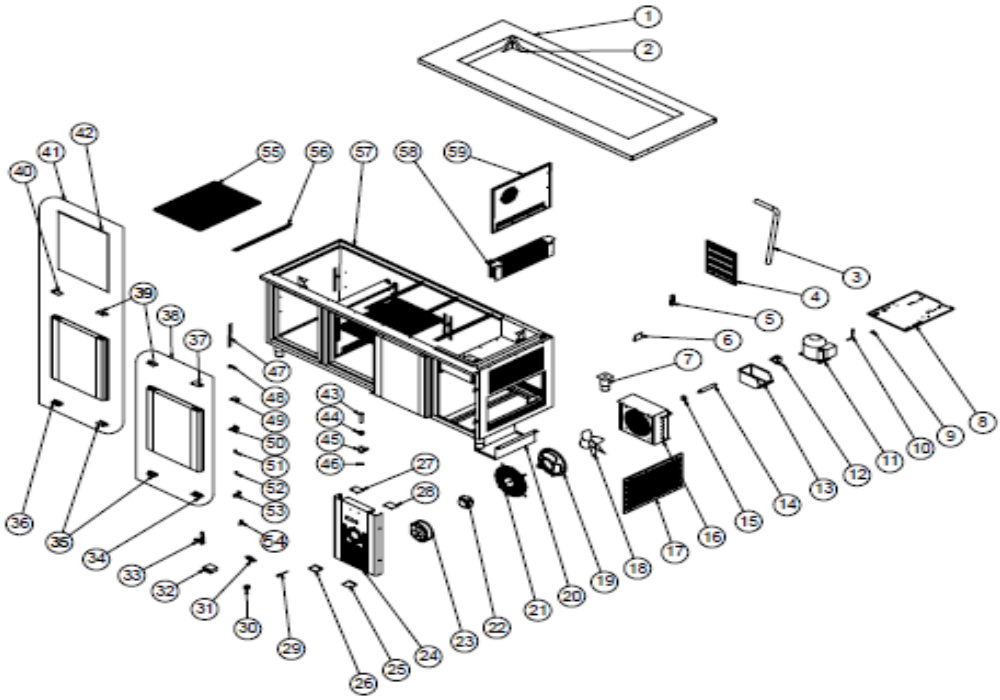
PRODUCT CODE: EMP.BSS.40		
NO	PRODUCT NAME	P.CODE
1	BACK COVER SHEET	YSC-ERK.BSS2-PN-0148
2	HOSE	HTS-HRT-001
3	GROUP SHEET	YSC-ERK.SA16-PN-0135
4	COPPER T 3/8	M.SOG-MUH-003
5	SELENOID VALF	ERK.M.ELK-SLN-VLF-001
6	SIBO	M.SOG-MUH-001
7	COMPRESSOR	M.SOG-KMS-022
8	DRAVER	M.SOG-DRY-004
9	HANDCUFF	M.PLS-ERK-003
10	RIGHT OUTER SIDE COVER SHEET	YSC-ERK.BSS2-PN-0117
11	TOOLS	ERK.M.MUH-003
12	1/2 CONDENSER	M.SOG-KDS-007
13	FAN CIRCLE PLASTIC	M.ENJ-ERK-PLS-001
14	WING	M.ELK-HVL-FKN-002
15	FAN MOTOR	ERK.M.ELK-MTR-FMT-002

## COLD SERVICE UNITS (REFRIGERATED)

16	FAN CIRCLE WIRE	ERK.M.MUH-001
17	TERMINAL	M.ELK-KLM-013
18	FOOT	ERK.M.AKS-AYK-1NX-001
19	DRAIN PAN	YSC-ERK.BSS2-PN-0105
20	HINGE	M.ENJ-ERK-PLS-010
21	HOLDER PLASTIC	M.ENJ-ERK-PLS-009
22	PLUG	M.ENJ-ERK-PLS-026
23	EXPENSE PLASTIC	M.ENJ-ERK-PLS-030
24	NUT	M.ENJ-ERK-PLS-024
25	PIPE	M.ENJ-ERK-PLS-002
26	UPPER RIGHT HINGE SHEET	M.AKS-MNT-SC-001
27	BOTTOM LEFT HINGE SHEET	M.AKS-MNT-SC-002
28	BUSH PLASTIC	M.ENJ-ERK-PLS-022
29	PIN	M.AKS-MNT-SC-005
30	SHELF NAIL	M.RAF-ERK-002
31	SHELF STRUT	ERK.M.MUH-002
32	TOP LEFT PLASTIC	M.PLS-ERK-031
33	TOP PLASTIC LEFT	M.ENJ-ERK-PLS-111
34	HINGE TOP PLASTIC RIGHT	M.ENJ-ERK-PLS-108
35	BOTTOM LEFT PLASTIC	M.PLS-ERK-032
36	ENGINE DOOR SHEET	YSC-ERK.1560-PN-0147
37	0-1 CONDITION GREEN	M.ELK-SLT-ANL-004
38	PROP	ERK.M.ELK-EDM-DGT-012
39	BOTTOM PLASTIC LEFT	M.ENJ-ERK-PLS-112
40	THERMOSTAT	M.ELK-EDM-DGT-039
41	HINGE	M.AKS-MNT-SC-007
42	HINGE BOTTOM PLASTIC RIGHT	M.ENJ-ERK-PLS-107
43	HAND PLASTIC BOTTOM	M.PLS-ERK-030
44	HINGE BOTTOM PLASTIC LEFT	M.ENJ-ERK-PLS-109
45	HINGE TOP PLASTIC LEFT	M.ENJ-ERK-PLS-110
46	COVER LEFT	ARA-ERK.1560-AKB TEZGAH
47	HAND PLASTIC TOP	M.PLS-ERK-029
48	COVER RIGHT	ARA-ERK.1560-TEZGAH KAPAK-
49	GASKET ( 590 - 472)	M.CNT-ERK-001
50	44*58 WIRE SHELF	M.RAF-ERK-007
51	BATH TAP SHEET	YSC-ERK.BSS2-PN-0131
52	CHASSIS	-
53	PROP PLASTIC	M.ENJ-ERK-PLS-017
54	EVAP	M.SOG-EVP-018
55	FAN	ERK.M.ELK-HVL-KFN-001
56	HOOD COVER SHEET	YSC-ERK.BSS2-PN-0171
57	TOP TABLE SHEET	YSC-ERK.BSS4-LZ-0028
58	TABLE PARTS SHEET	YSC-ERK.BSS2-LZ-0065
59	BACK COVER SHEET	YSC-ERK.BSS2-PN-0148

# COLD SERVICE UNITS (REFRIGERATED)

## G SPARE PART LIST- EXPLODING DRAWINGS



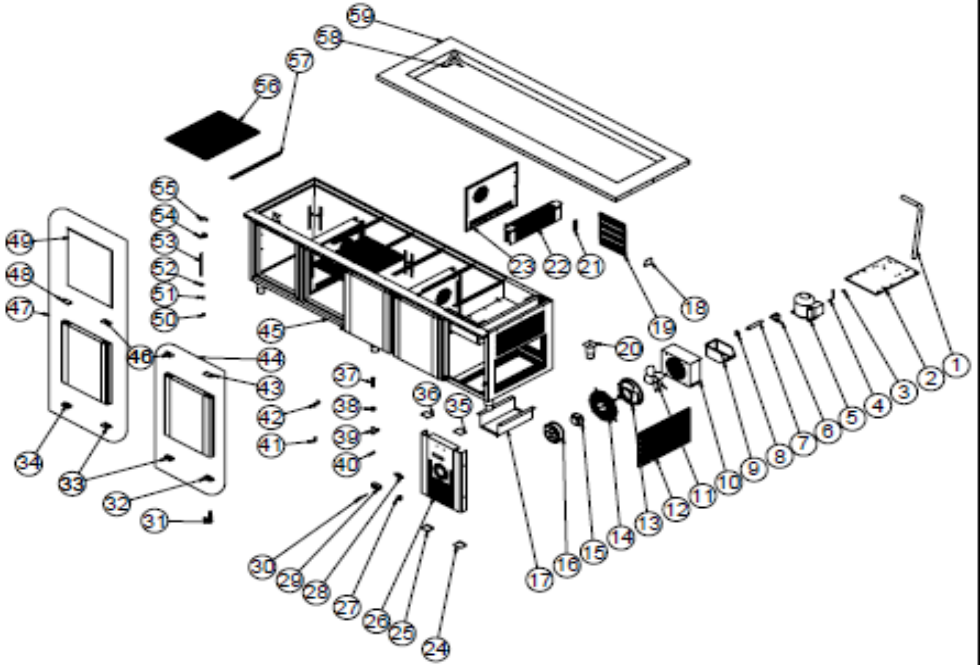
PRODUCT CODE: EMP.BSS.60		
NO	PRODUCT NAME	P.CODE
1	TOP TABLE SHEET	YSC-ERK.BSS6-LZ-0020
2	TABLE PARTS SHEET	YSC-ERK.BSS2-LZ-0065
3	HOSE	HTS-HRT-001
4	BACK COVER SHEET	YSC-ERK.BSS2-PN-0148
5	PROP PLASTIC	M.ENJ-ERK-PLS-017
6	TERMINAL	M.ELK-KLM-013
7	FOOT	ERK.M.AKS-AYK-INX-001
8	GROUP SHEET	YSC-ERK.SA16-PN-0135
9	COPPER T 3/8	M.SOG-MUH-003
10	SIBO	M.SOG-MUH-001
11	COMPRESSOR	M.SOG-KMS-022
12	SELENOID VALF	ERK.M.ELK-SLN-VLF-001
13	TOOLS	ERK.M.MUH-003
14	DRAYER	M.SOG-DRY-004
15	HANDCUFF	M.PLS-ERK-003

## COLD SERVICE UNITS (REFRIGERATED)

16	1/2 CONDENSER	M.SOG-KDS-007
17	RIGHT OUTER SIDE COVER SHEET	YSC-ERK.BSS2-PN-0117
18	WING	M.ELK-HVL-FKN-002
19	FAN CIRCLE PLASTIC	M.ENJ-ERK-PLS-001
20	DRAIN PAN	YSC-ERK.BSS2-PN-0105
21	FAN CIRCLE WIRE	ERK.M.MUH-001
22	FAN MOTOR	ERK.M.ELK-MTR-FMT-002
23	FAN	ERK.M.ELK-HVL-KFN-001
24	ENGINE DOOR SHEET	YSC-ERK.1560-PN-0147
25	BOTTOM LEFT PLASTIC	M.PLS-ERK-032
26	BOTTOM PLASTIC LEFT	M.ENJ-ERK-PLS-112
27	TOP PLASTIC LEFT	M.ENJ-ERK-PLS-111
28	TOP LEFT PLASTIC	M.PLS-ERK-031
29	PROP	ERK.M.ELK-EDM-DGT-012
30	0-1 CONDITION GREEN	M.ELK-SLT-ANL-004
31	THERMOSTAT	M.ELK-EDM-DGT-039
32	HINGE	M.AKS-MNT-SC-007
33	HINGE BOTTOM PLASTIC RIGHT	M.ENJ-ERK-PLS-107
34	HAND PLASTIC BOTTOM	M.PLS-ERK-030
35	HINGE BOTTOM PLASTIC LEFT	M.ENJ-ERK-PLS-109
36	HINGE TOP PLASTIC RIGHT	M.ENJ-ERK-PLS-108
37	COVER RIGHT	ARA-ERK.1560-TEZGAH KAPAK-SAG-430S
38	HAND PLASTIC TOP	M.PLS-ERK-029
39	HINGE TOP PLASTIC LEFT	M.ENJ-ERK-PLS-110
40	COVER LEFT	ARA-ERK.1560-AKB TEZGAH KAPAK-430S
41	GASKET ( 590 - 472)	M.CNT-ERK-001
42	PIPE	M.ENJ-ERK-PLS-002
43	NUT	M.ENJ-ERK-PLS-024
44	EXPENSE PLASTIC	M.ENJ-ERK-PLS-030
45	PLUG	M.ENJ-ERK-PLS-026
46	SHELF STRUT	ERK.M.MUH-002
47	SHELF NAIL	M.RAF-ERK-002
48	UPPER RIGHT HINGE SHEET	M.AKS-MNT-SC-001
49	BOTTOM LEFT HINGE SHEET	M.AKS-MNT-SC-002
50	PIN	M.AKS-MNT-SC-005
51	BUSH PLASTIC	M.ENJ-ERK-PLS-022
52	HINGE	M.ENJ-ERK-PLS-010
53	HOLDER PLASTIC	M.ENJ-ERK-PLS-009
54	44*58 WIRE SHELF	M.RAF-ERK-007
55	BATH TAP SHEET	YSC-ERK.BSS2-PN-0131
56	CHASSIS	-
57	EVAP	M.SOG-EVP-018
58	HOOD COVER SHEET	YSC-ERK.BSS2-PN-0171
59	TOP TABLE SHEET	YSC-ERK.BSS6-LZ-0020

# COLD SERVICE UNITS (REFRIGERATED)

## G SPARE PART LIST- EXPLODING DRAWINGS



**PRODUCT CODE: EMP.BSS.80**

NO	PRODUCT NAME	P.CODE
1	HOSE	HTS-HRT-001
2	ENGINE GROUP SHEET	YSC-ERK.7080-PN-0017
3	COPPER T 3/8	M.SOG-MUH-003
4	SIBO	M.SOG-MUH-001
5	COMPRESSOR	M.SOG-KMS-035
6	SELENOİD VALF	ERK.M.ELK-SLN-VLF-001
7	DRAWER	ERK.M.SOG-DRY-001
8	HANDCUFF	M.PLS-ERK-007
9	TOOLS	ERK.M.MUH-003
10	CONDENSER POSITIVE (+)	M.SOG-KDS-032
11	WING	M.ELK-HVL-FKN-002
12	RIGHT OUTER SIDE COVER SHEET	YSC-ERK.BSS2-PN-0117
13	FAN CIRCLE PLASTIC	M.ENJ-ERK-PLS-001
14	FAN CIRCLE WIRE	ERK.M.MUH-001
15	FAN MOTOR	ERK.M.ELK-MTR-FMT-002

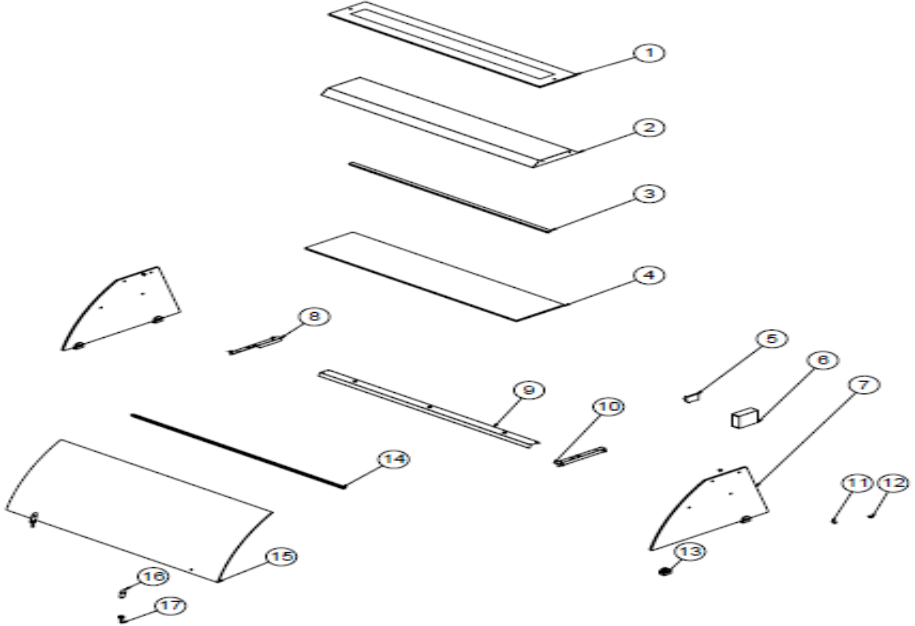
## COLD SERVICE UNITS (REFRIGERATED)

16	FAN	ERK.M.ELK-HVL-KFN-001
17	DRAIN PAN	YSC-ERK.BSS2-PN-0105
18	TERMINAL	M.ELK-KLM-013
19	BACK COVER SHEET	YSC-ERK.BSS2-PN-0148
20	FOOT	ERK.M.AKS-AYK-INX-001
21	PROP PLASTIC	M.ENJ-ERK-PLS-017
22	EVAP	M.SOG-EVP-018
23	HOOD COVER SHEET	YSC-ERK.BSS2-PN-0171
24	BOTTOM LEFT PLASTIC	M.PLS-ERK-032
25	BOTTOM PLASTIC LEFT	M.ENJ-ERK-PLS-112
26	ENGINE GLASS DOOR SHEET	YSC-ERK.2560-PN-0080
27	0-1 CONDITION GREEN	M.ELK-SLT-ANL-004
28	THERMOSTAT	M.ELK-EDM-DGT-039
29	PROP	ERK.M.ELK-EDM-DGT-012
30	HINGE	M.AKS-MNT-SC-007
31	HINGE BOTTOM PLASTIC RIGHT	M.ENJ-ERK-PLS-107
32	HAND PLASTIC BOTTOM	M.PLS-ERK-030
33	HINGE BOTTOM PLASTIC LEFT	M.ENJ-ERK-PLS-109
34	TOP LEFT PLASTIC	M.PLS-ERK-031
35	TOP PLASTIC LEFT	M.ENJ-ERK-PLS-111
36	PIPE	M.ENJ-ERK-PLS-002
37	NUT	M.ENJ-ERK-PLS-024
38	EXPENSE PLASTIC	M.ENJ-ERK-PLS-030
39	PLUG	M.ENJ-ERK-PLS-026
40	HOLDER PLASTIC	M.ENJ-ERK-PLS-009
41	HINGE	M.ENJ-ERK-PLS-010
42	HINGE TOP PLASTIC RIGHT	M.ENJ-ERK-PLS-108
43	COVER RIGHT	ARA-ERK.1560-TEZGAH KAPAK-SAG-430S
44	CHASSIS	-
45	HAND PLASTIC TOP	M.PLS-ERK-029
46	COVER LEFT	ARA-ERK.1560-AKB TEZGAH KAPAK-430S
47	HINGE TOP PLASTIC LEFT	M.ENJ-ERK-PLS-110
48	GASKET ( 590 - 472)	M.CNT-ERK-001
49	BUSH PLASTIC	M.ENJ-ERK-PLS-022
50	PIN	M.AKS-MNT-SC-005
51	SHELF NAIL	M.RAF-ERK-002
52	SHELF STRUT	ERK.M.MUH-002
53	UPPER RIGHT HINGE SHEET	M.AKS-MNT-SC-001
54	BOTTOM LEFT HINGE SHEET	M.AKS-MNT-SC-002
55	44*58 WIRE SHELF	M.RAF-ERK-007
56	BATH TAP SHEET	YSC-ERK.BSS2-PN-0131
57	TABLE PARTS SHEET	YSC-ERK.BSS2-LZ-0065
58	TOP TABLE SHEET	YSC-ERK.BSS8-LZ-0031
59	HOSE	HTS-HRT-001



# COLD SERVICE UNITS (REFRIGERATED)

## G SPARE PART LIST- EXPLODING DRAWINGS

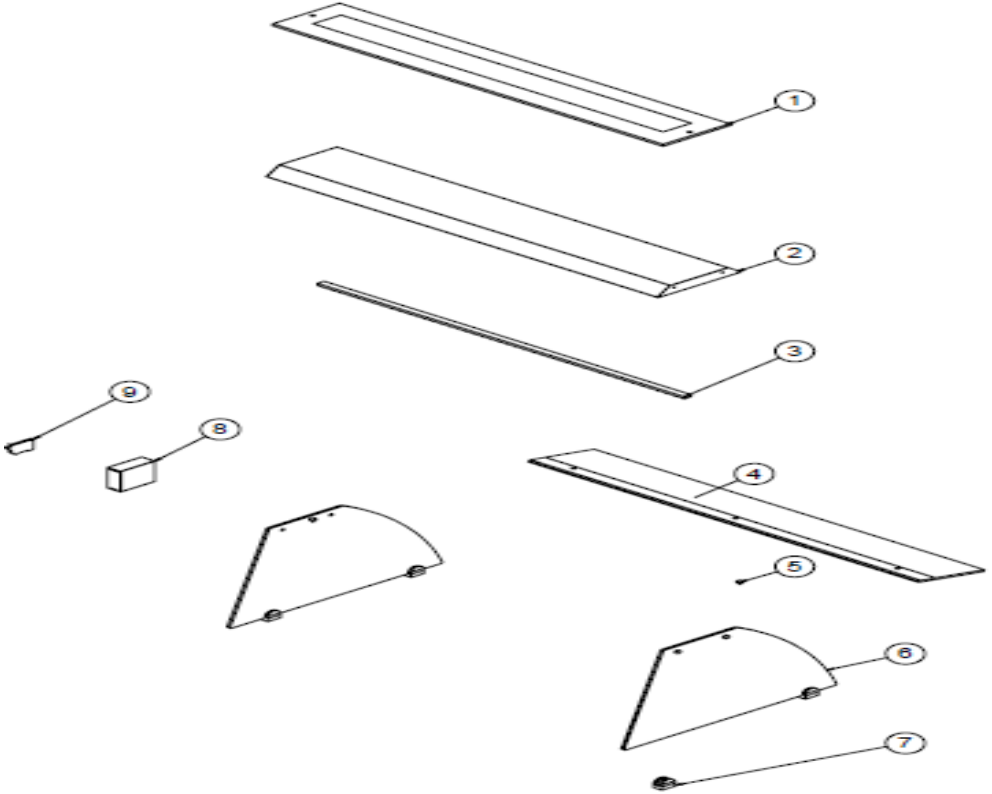


**PRODUCT CODE: EMP.BSS.20.BC.T**

NO	PRODUCT NAME	P.CODE
1	TOP GLASS ( 1170 * 200 * 10 mm )	M.CAM-ERK-BC-005
2	LAMP SHEET	YSC-ERK.BSS2-LZ-0036
3	LED	M.ELK-LED-001
4	CAM (1170*260)	M.CAM-ERK-022
5	TERMINAL	M.ELK-KLM-019
6	POWER SOURCE	M.ELK-MUH-006
7	SIDE GLASS (640*426*8MM)	M.CAM-ERK-BC-001
8	LAMP SHEET LEFT	YSC-ERK.BSS2-LZ-0038
9	LAMP SHEET	YSC-ERK.BSS2-LZ-0035
10	SHELF LAMP SHEET RIGHT	YSC-ERK.BSS2-LZ-0037
11	PLUG	M.AKS-GNL-005
12	SUCTION CUPS	ERK.M.AKS-GNL-008
13	SHELF HOLDER	M.AKS-GNL-006
14	HANDLE PROFILE	HPR-ALM-OZL-004
15	WINDSCREEN 1170*519	M.CAM-ERK-BC-006
16	HINGE TOP	YTL-ERK.BSS-KS-0001
17	HINGE BOTTOM	YTL-ERK.BSS-KS-0002

# COLD SERVICE UNITS (REFRIGERATED)

## G SPARE PART LIST- EXPLODING DRAWINGS

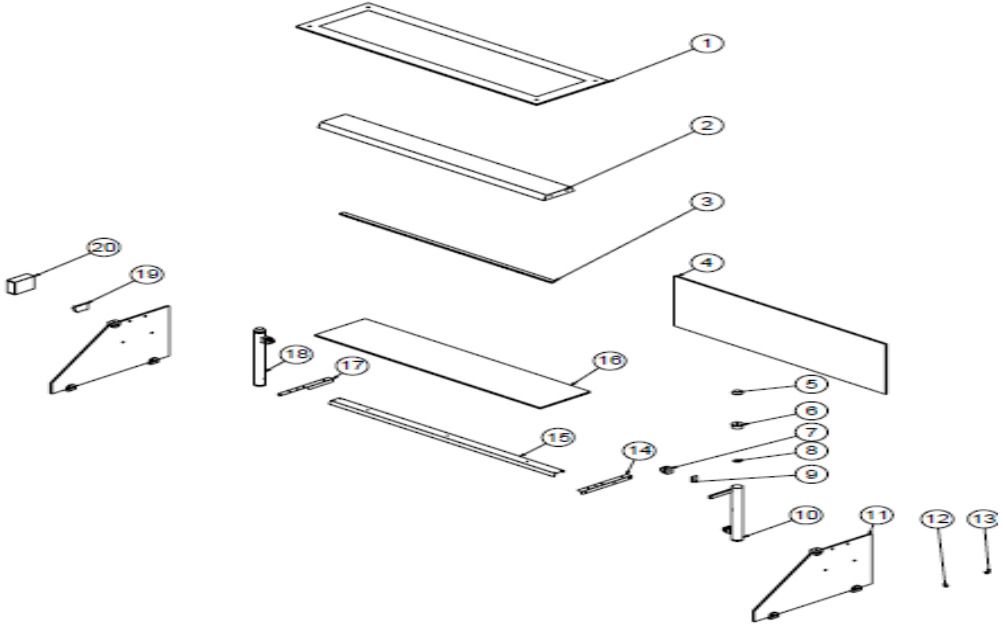


PRODUCT CODE: EMP.BSS.20.BC.Y

NO	PRODUCT NAME	P.CODE
1	TOP GLASS (1170*205*10MM)	M.CAM-ERK-BC-007
2	LAMP SHEET	YSC-ERK.BSS2-LZ-0041
3	LED	M.ELK-LED-001
4	WINDSCREEN(1170*200*8MM)	M.CAM-ERK-BC-010
5	PLUG	M.AKS-GNL-005
6	SIDE GLASS (640*426 8MM)	M.CAM-ERK-BC-027
7	SHELF HOLDER	M.AKS-GNL-006
8	POWER SOURCE	M.ELK-MUH-006
9	TERMINAL	M.ELK-KLM-019

# COLD SERVICE UNITS (REFRIGERATED)

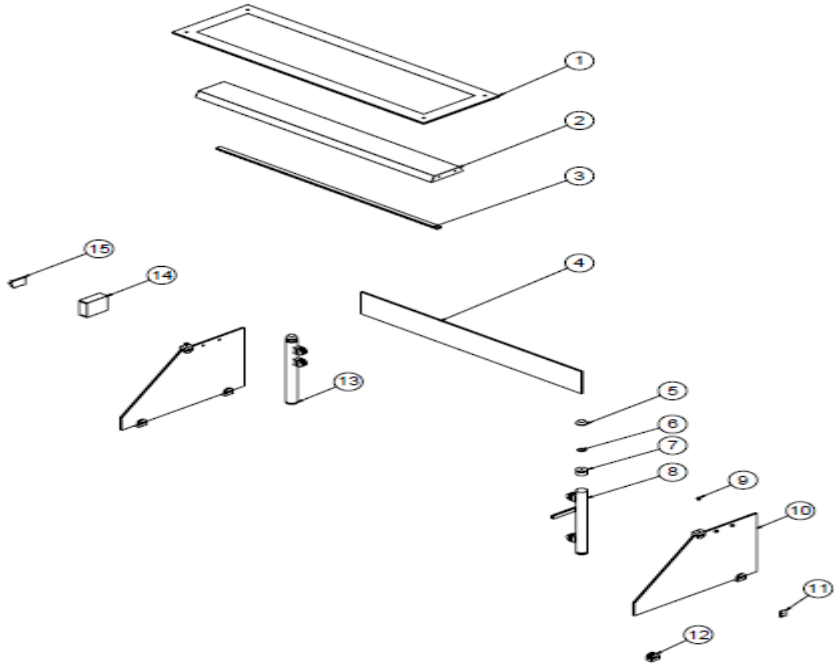
## G SPARE PART LIST- EXPLODING DRAWINGS



PRODUCT CODE: EMP.BSS.20.USC.T		
NO	PRODUCT NAME	P.CODE
1	TOP GLASS (1250x375)	M.CAM-ERK-020
2	LAMP SHEET	YSC-ERK.BSS2-LZ-0034
3	LED	M.ELK-LED-001
4	WINDSCREEN (1098*400)	M.CAM-ERK-021
5	TOP GLASS HOLDER	M.ENJ-ERK-PLS-136
6	DERLIN	M.MUH-039
7	SHELF HOLDER	M.AKS-GNL-006
8	ORING (3x27)	M.CNT-ORG-010
9	SHELF HOLDER	ERK.M.AKS-GNL-011
10	PIPE Ø42	YBR-ERK.BEH-KS-0001
11	SIDE GLASS (610*400)	M.CAM-ERK-019
12	PLUG	M.AKS-GNL-005
13	SUCTION CUPS	ERK.M.AKS-GNL-008
14	SHELF LAMP SHEET RIGHT	YSC-ERK.BSS2-LZ-0037
15	LAMP SHEET	YSC-ERK.BSS2-LZ-0035
16	CAM (1170*260)	M.CAM-ERK-022
17	LAMP SHEET LEFT	YSC-ERK.BSS2-LZ-0038
18	PIPE Ø42	YBR-ERK.BEH-KS-0002
19	TERMINAL	M.ELK-KLM-019
20	POWER SOURCE	M.ELK-MUH-006

# COLD SERVICE UNITS (REFRIGERATED)

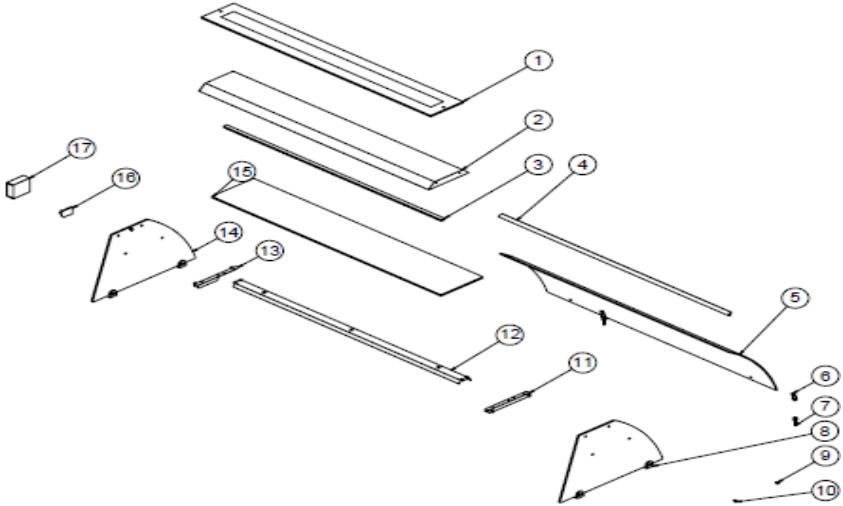
## G SPARE PART LIST- EXPLODING DRAWINGS



PRODUCT CODE: EMP.BSS.20.USC.Y		
NO	PRODUCT NAME	P.CODE
1	TOP GLASS (1250x375)	M.CAM-ERK-020
2	LAMP SHEET	YSC-ERK.BSS2-LZ-0034
3	LED	M.ELK-LED-001
4	FRONT HALF GLASS 1098*150	M.CAM-ERK-047
5	TOP GLASS HOLDER	M.ENJ-ERK-PLS-136
6	ORING (3x27)	M.CNT-ORG-010
7	DERLIN	M.MUH-039
8	PIPE Ø42	YBR-ERK.BEH-KS-0004
9	PLUG	M.AKS-GNL-005
10	SIDE GLASS (610*400*8MM)	M.CAM-ERK-045
11	SHELF HOLDER	ERK.M.AKS-GNL-011
12	SHELF HOLDER	M.AKS-GNL-006
13	PIPE Ø42	YBR-ERK.BEH-KS-0003
14	POWER SOURCE	M.ELK-MUH-006
15	TERMINAL	M.ELK-KLM-019

# COLD SERVICE UNITS (REFRIGERATED)

## G SPARE PART LIST- EXPLODING DRAWINGS

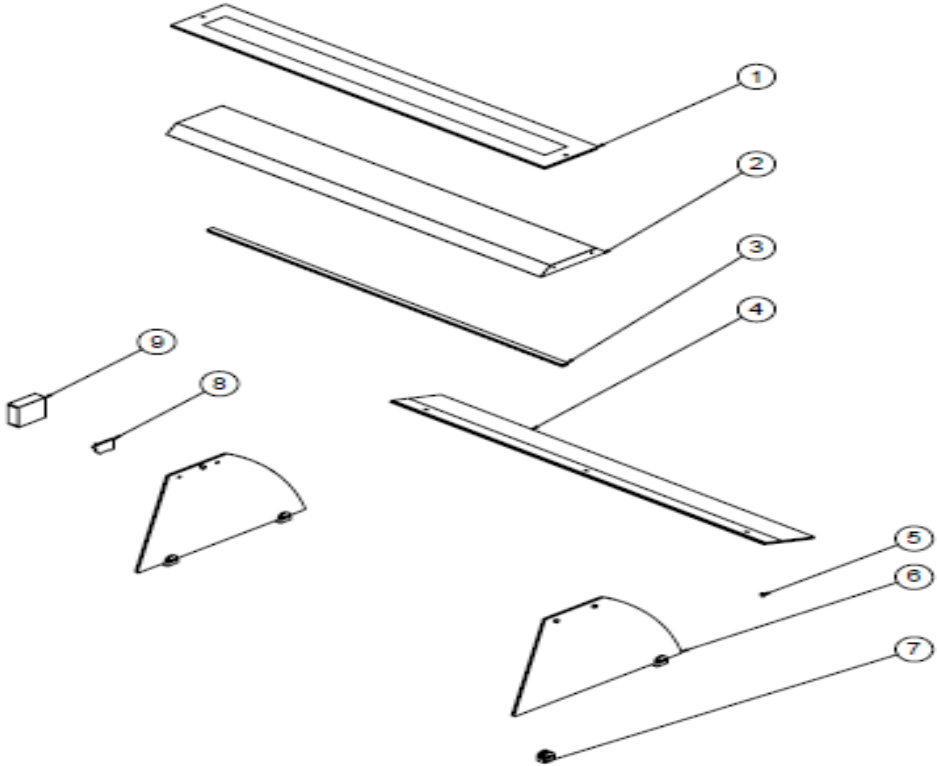


**PRODUCT CODE: EMP.BSS.40.BC.T**

NO	PRODUCT NAME	P.CODE
1	TOP GLASS (1420x200x10 mm)	M.CAM-ERK-BC-008
2	LAMP SHEET	YSC-ERK.BSS4-LZ-0021
3	LED	M.ELK-LED-002
4	HANDLE PROFILE	HPR-ALM-OZL-004
5	WINDSCREEN (1420*519*6MM)	M.CAM-ERK-BC-009
6	HINGE TOP	YTL-ERK.BSS-KS-0001
7	HINGE BOTTOM	YTL-ERK.BSS-KS-0002
8	SHELF HOLDER	M.AKS-GNL-006
9	PLUG	M.AKS-GNL-005
10	SUCTION CUPS	ERK.M.AKS-GNL-008
11	SHELF LAMP SHEET RIGHT	YSC-ERK.BSS2-LZ-0037
12	LAMP SHEET	YSC-ERK.BSS4-LZ-0020
13	LAMP SHEET LEFT	YSC-ERK.BSS2-LZ-0038
14	SIDE GLASS (640*426*8MM)	M.CAM-ERK-BC-001
15	SIDE GLASS (1420*260)	M.CAM-ERK-025
16	TERMINAL	M.ELK-KLM-019
17	POWER SOURCE	M.ELK-MUH-006

# COLD SERVICE UNITS (REFRIGERATED)

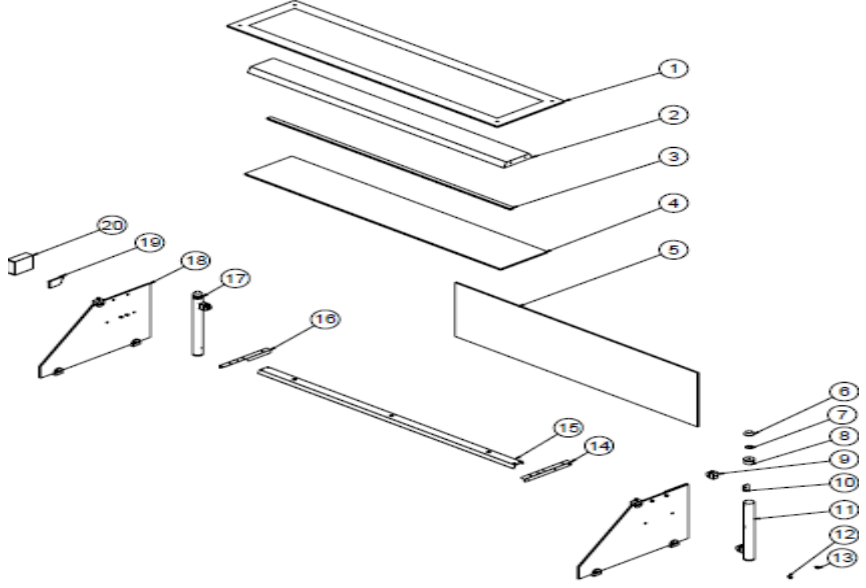
## G SPARE PART LIST- EXPLODING DRAWINGS



PRODUCT CODE: EMP.BSS.40.BC.Y		
NO	PRODUCT NAME	P.CODE
1	TOP GLASS (1420x205x10 mm)	M.CAM-ERK-BC-025
2	LAMP SHEET	YSC-ERK.BSS4-LZ-0023
3	LED	M.ELK-LED-002
4	WINDSCREEN (1420*200*8 MM )	M.CAM-ERK-BC-053
5	PLUG	M.AKS-GNL-005
6	SIDE GLASS (640*426 8MM)	M.CAM-ERK-BC-027
7	SHELF HOLDER	M.AKS-GNL-006
8	TERMINAL	M.ELK-KLM-019
9	POWER SOURCE	M.ELK-MUH-006

# COLD SERVICE UNITS (REFRIGERATED)

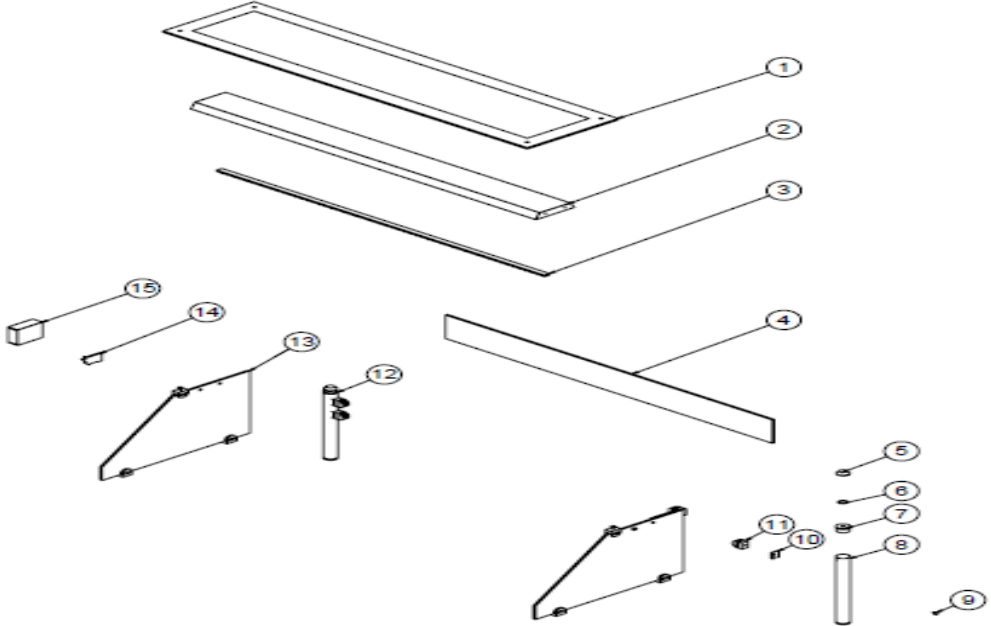
## G SPARE PART LIST- EXPLODING DRAWINGS



PRODUCT CODE: EMP.BSS.40.USC.T		
NO	PRODUCT NAME	P.CODE
1	TOP GLASS (1500*375)	M.CAM-ERK-023
2	LAMP SHEET	YSC-ERK.BSS4-LZ-0021
3	LED	M.ELK-LED-002
4	SIDE GLASS (1420*260)	M.CAM-ERK-025
5	WINDSCREEN (1348*400)	M.CAM-ERK-024
6	TOP GLASS HOLDER	M.ENJ-ERK-PLS-136
7	ORING (3x27)	M.CNT-ORG-010
8	DERLIN	M.MUH-039
9	SHELF HOLDER	M.AKS-GNL-006
10	SHELF HOLDER	ERK.M.AKS-GNL-011
11	PIPE Ø42	YBR-ERK.BEH-KS-0001
12	PLUG	M.AKS-GNL-005
13	SUCTION CUPS	ERK.M.AKS-GNL-008
14	SHELF LAMP SHEET RIGHT	YSC-ERK.BSS2-LZ-0037
15	LAMP SHEET	YSC-ERK.BSS4-LZ-0020
16	LAMP SHEET LEFT	YSC-ERK.BSS2-LZ-0038
17	PIPE Ø42	YBR-ERK.BEH-KS-0002
18	SIDE GLASS (610*400)	M.CAM-ERK-019
19	TERMINAL	M.ELK-KLM-019
20	POWER SOURCE	M.ELK-MUH-006

# COLD SERVICE UNITS (REFRIGERATED)

## G SPARE PART LIST- EXPLODING DRAWINGS



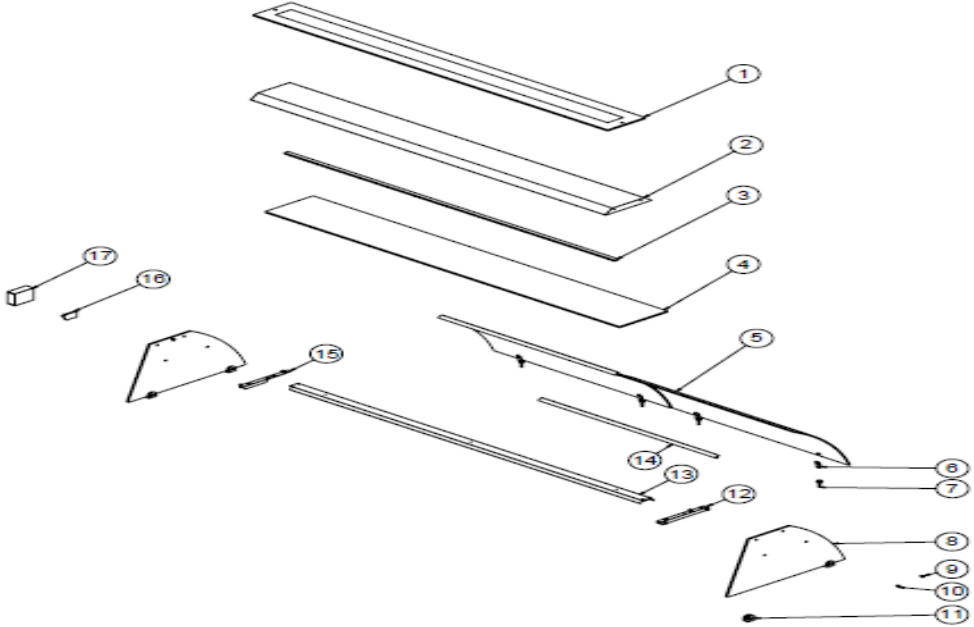
**PRODUCT CODE: EMP.BSS.40.USC.Y**

NO	PRODUCT NAME	P.CODE
1	TOP GLASS (1500*375)	M.CAM-ERK-023
2	LAMP SHEET	YSC-ERK.BSS4-LZ-0021
3	LED	M.ELK-LED-002
4	FRONT HALF GLASS (1348*150*8MM)	M.CAM-ERK-048
5	TOP GLASS HOLDER	M.ENJ-ERK-PLS-136
6	ORING (3x27)	M.CNT-ORG-010
7	DERLIN	M.MUH-039
8	PIPE Ø42	YBR-ERK.BEH-KS-0004
9	PLUG	M.AKS-GNL-005
10	SHELF HOLDER	ERK.M.AKS-GNL-011
11	SHELF HOLDER	M.AKS-GNL-006
12	PIPE Ø42	YBR-ERK.BEH-KS-0003
13	SIDE GLASS (610*400*8MM)	M.CAM-ERK-045
14	TERMINAL	M.ELK-KLM-019
15	POWER SOURCE	M.ELK-MUH-006



# COLD SERVICE UNITS (REFRIGERATED)

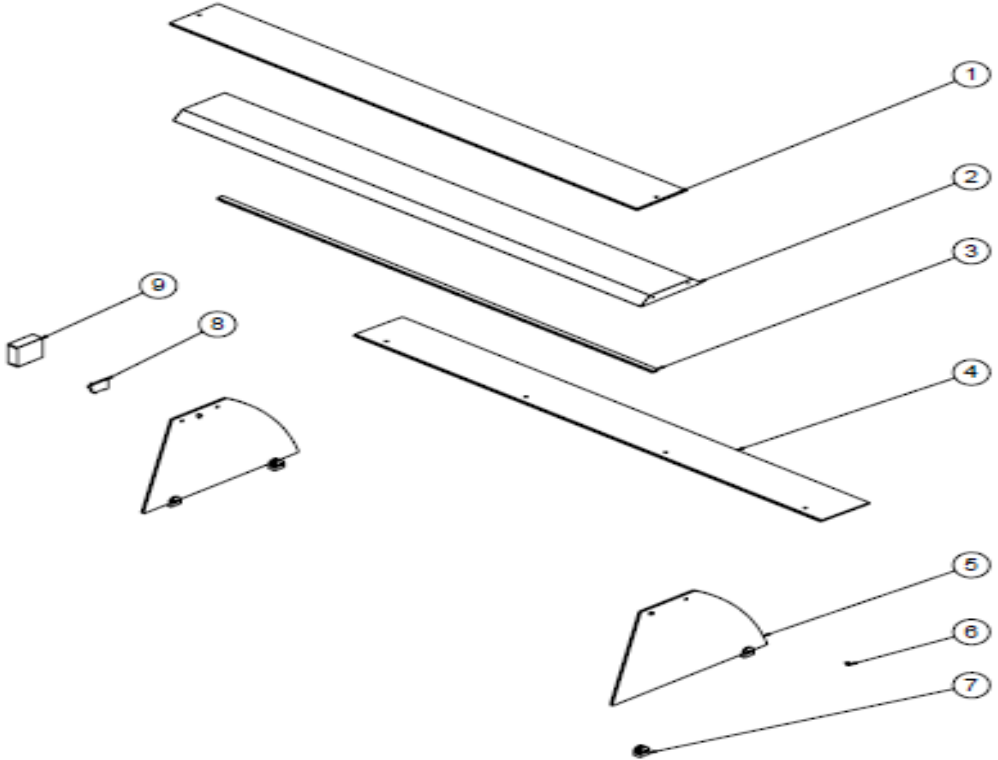
## G SPARE PART LIST- EXPLODING DRAWINGS



PRODUCT CODE: EMP.BSS.60.BC.T		
NO	PRODUCT NAME	P.CODE
1	TOP GLASS ( 1920x205x10 mm )	M.CAM-ERK-BC-017
2	LAMP SHEET	YSC-ERK.BSS6-LZ-0004
3	LED	M.ELK-LED-003
4	INTERMEDIATE GLASS (1920*260*10MM)	M.CAM-ERK-053
5	WINDSCREEN (959*519*6MM)	M.CAM-ERK-BC-018
6	HINGE TOP	YTL-ERK.BSS-KS-0001
7	HINGE BOTTOM	YTL-ERK.BSS-KS-0002
8	SIDE GLASS (640*426*8MM)	M.CAM-ERK-BC-001
9	PLUG	M.AKS-GNL-005
10	SUCTION CUPS	ERK.M.AKS-GNL-008
11	SHELF HOLDER	M.AKS-GNL-006
12	SHELF LAMP SHEET RIGHT	YSC-ERK.BSS2-LZ-0037
13	LAMP SHEET	YSC-ERK.BSS6-LZ-0003
14	HANDLE PROFILE	HPR-ALM-OZL-004
15	LAMP SHEET LEFT	YSC-ERK.BSS2-LZ-0038
16	TERMINAL	M.ELK-KLM-019
17	POWER SOURCE	M.ELK-MUH-007

# COLD SERVICE UNITS (REFRIGERATED)

## G SPARE PART LIST- EXPLODING DRAWINGS

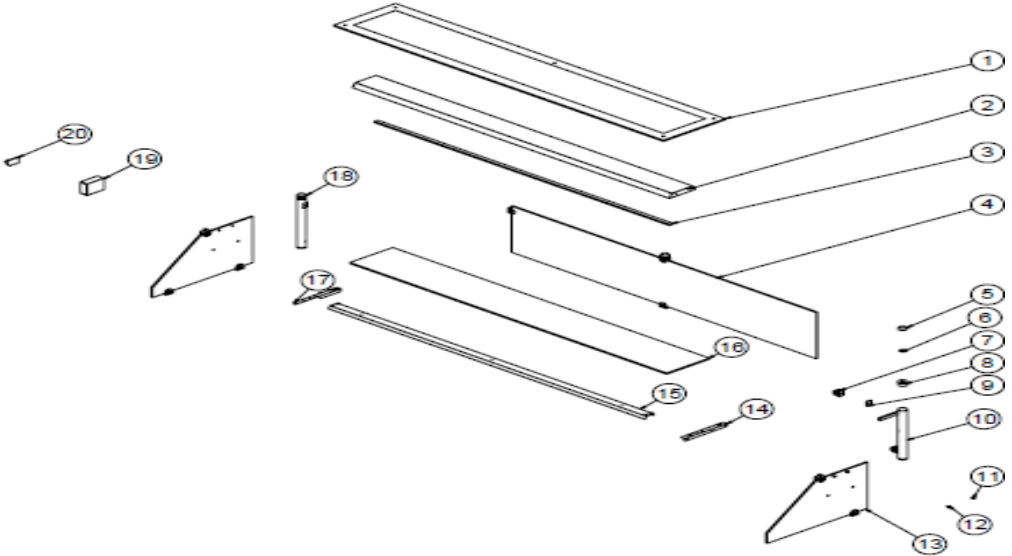


PRODUCT CODE: EMP.BSS.60.Y

NO	PRODUCT NAME	P.CODE
1	TOP GLASS (1920*205*10MM)	M.CAM-ERK-BC-036
2	LAMP SHEET	YSC-ERK.BSS6-LZ-0005
3	LED	M.ELK-LED-003
4	WINDSCREEN (1920*200*8MM)	M.CAM-ERK-BC-035
5	SIDE GLASS (640*426 8MM)	M.CAM-ERK-BC-027
6	PLUG	M.AKS-GNL-005
7	SHELF HOLDER	M.AKS-GNL-006
8	TERMINAL	M.ELK-KLM-019
9	POWER SOURCE	M.ELK-MUH-006

# COLD SERVICE UNITS (REFRIGERATED)

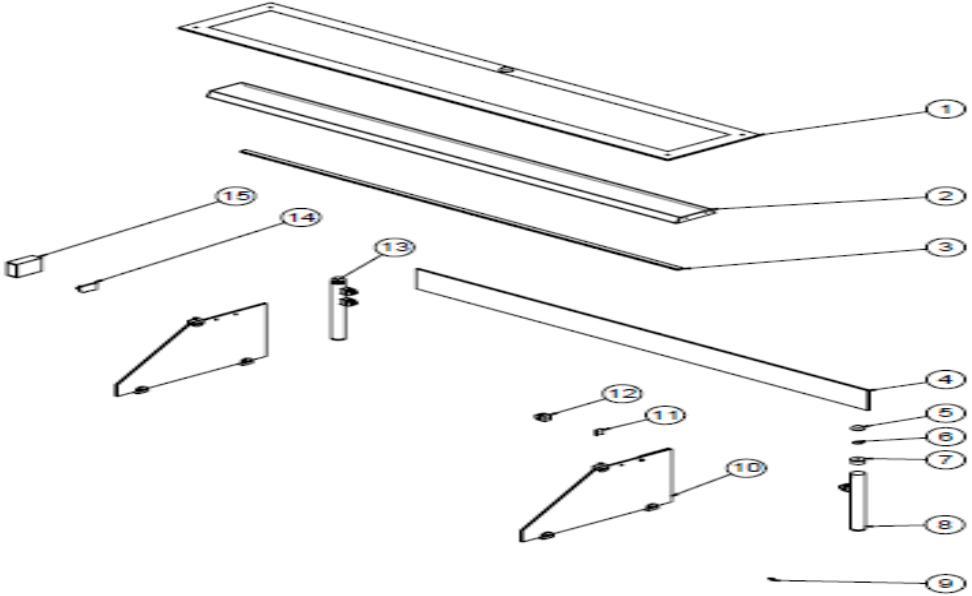
## G SPARE PART LIST- EXPLODING DRAWINGS



PRODUCT CODE: EMP.BSS.60.USC.T		
NO	PRODUCT NAME	P.CODE
1	TOP GLASS ( 2000x375x10 mm )	M.CAM-ERK-051
2	LAMP SHEET	YSC-ERK.BSS6-LZ-0002
3	LED	M.ELK-LED-003
4	WINDSCREEN (1848*400*8MM)	M.CAM-ERK-052
5	TOP GLASS HOLDER	M.ENJ-ERK-PLS-136
6	ORING (3x27)	M.CNT-ORG-010
7	SHELF HOLDER	M.AKS-GNL-006
8	DERLIN	M.MUH-039
9	SHELF HOLDER	ERK.M.AKS-GNL-011
10	PIPE Ø42	YBR-ERK.BEH-KS-0001
11	PLUG	M.AKS-GNL-005
12	SUCTION CUPS	ERK.M.AKS-GNL-008
13	SIDE GLASS (610*400)	M.CAM-ERK-019
14	SHELF LAMP SHEET RIGHT	YSC-ERK.BSS2-LZ-0037
15	LAMP SHEET	YSC-ERK.BSS6-LZ-0003
16	INTERMEDIATE GLASS (1920*260*10MM)	M.CAM-ERK-053
17	LAMP SHEET LEFT	YSC-ERK.BSS2-LZ-0038
18	PIPE Ø42	YBR-ERK.BEH-KS-0002
19	POWER SOURCE	M.ELK-MUH-007
20	TERMINAL	M.ELK-KLM-019

# COLD SERVICE UNITS (REFRIGERATED)

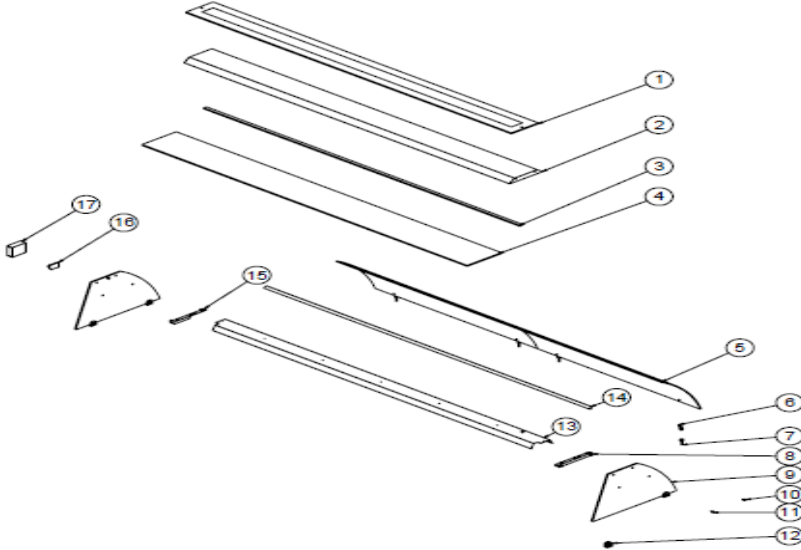
## G SPARE PART LIST- EXPLODING DRAWINGS



PRODUCT CODE: EMP.BSS.60.USC.Y		
NO	PRODUCT NAME	P.CODE
1	TOP GLASS ( 2000x375x10 mm )	M.CAM-ERK-051
2	LAMP SHEET	YSC-ERK.BSS6-LZ-0002
3	LED	M.ELK-LED-003
4	FRONT HALF GLASS (1848*150*8MM)	M.CAM-ERK-057
5	TOP GLASS HOLDER	M.ENJ-ERK-PLS-136
6	ORING (3x27)	M.CNT-ORG-010
7	DERLIN	M.MUH-039
8	PIPE Ø42	YBR-ERK.BEH-KS-0004
9	PLUG	M.AKS-GNL-005
10	SIDE GLASS (610*400*8MM)	M.CAM-ERK-045
11	SHELF HOLDER	ERK.M.AKS-GNL-011
12	SHELF HOLDER	M.AKS-GNL-006
13	PIPE Ø42	YBR-ERK.BEH-KS-0003
14	TERMINAL	M.ELK-KLM-019
15	POWER SOURCE	M.ELK-MUH-007

# COLD SERVICE UNITS (REFRIGERATED)

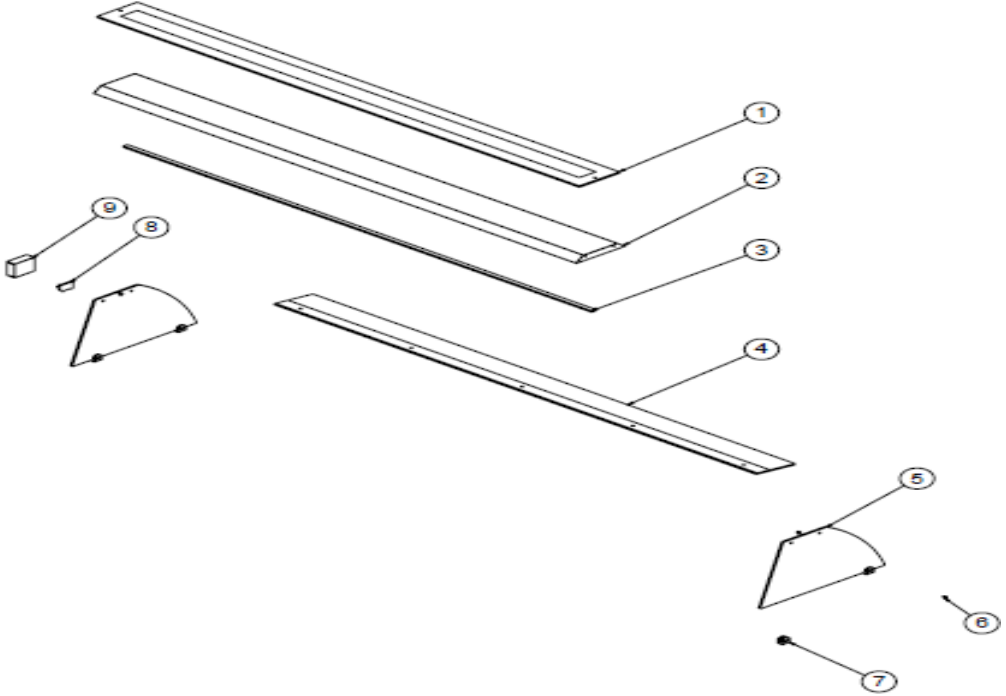
## G SPARE PART LIST- EXPLODING DRAWINGS



PRODUCT CODE: EMP.BSS.80.BC.T		
NO	PRODUCT NAME	P.CODE
1	TOP GLASS (2470*205*10MM)	M.CAM-ERK-BC-020
2	LAMP SHEET	YSC-ERK.BSS8-LZ-0004
3	LED	M.ELK-LED-004
4	INTERMEDIATE GLASS (2470*260*10MM)	M.CAM-ERK-056
5	WINDSCREEN (1235*519*6MM)	M.CAM-ERK-BC-021
6	HINGE TOP	YTL-ERK.BSS-KS-0001
7	HINGE BOTTOM	YTL-ERK.BSS-KS-0002
8	SHELF LAMP SHEET RIGHT	YSC-ERK.BSS2-LZ-0037
9	SIDE GLASS (640*426*8MM)	M.CAM-ERK-BC-001
10	PLUG	M.AKS-GNL-005
11	SUCTION CUPS	ERK.M.AKS-GNL-008
12	SHELF HOLDER	M.AKS-GNL-006
13	MEDIUM SHELF LAMP SHEET	YSC-ERK.BSS8-LZ-0003
14	HANDLE PROFILE	HPR-ALM-OZL-004
15	LAMP SHEET LEFT	YSC-ERK.BSS2-LZ-0038
16	TERMINAL	M.ELK-KLM-019
17	POWER SOURCE	M.ELK-MUH-007

# COLD SERVICE UNITS (REFRIGERATED)

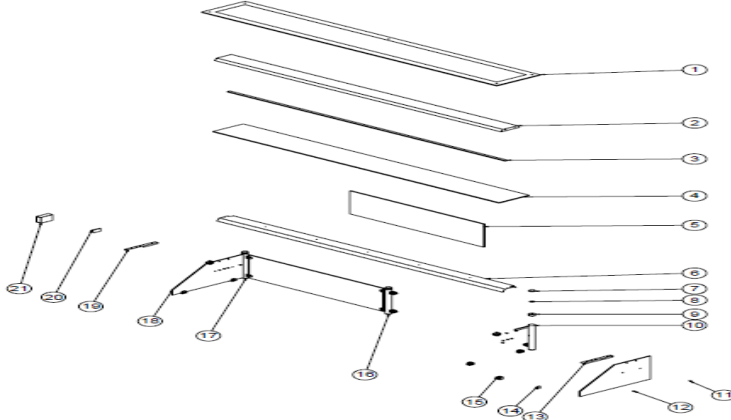
## G SPARE PART LIST- EXPLODING DRAWINGS



PRODUCT CODE: EMP.BSS.80.BC.Y		
NO	PRODUCT NAME	P.CODE
1	TOP GLASS (2470*205*8MM)	M.CAM-ERK-BC-037
2	GLASS LAMP SHEET	YSC-ERK.BSS8-LZ-0011
3	LED	M.ELK-LED-004
4	WINDSCREEN (2470*200*8MM)	M.CAM-ERK-BC-038
5	SIDE GLASS (640*426 8MM)	M.CAM-ERK-BC-027
6	PLUG	M.AKS-GNL-005
7	SHELF HOLDER	M.AKS-GNL-006
8	TERMINAL	M.ELK-KLM-019
9	POWER SOURCE	M.ELK-MUH-006

# COLD SERVICE UNITS (REFRIGERATED)

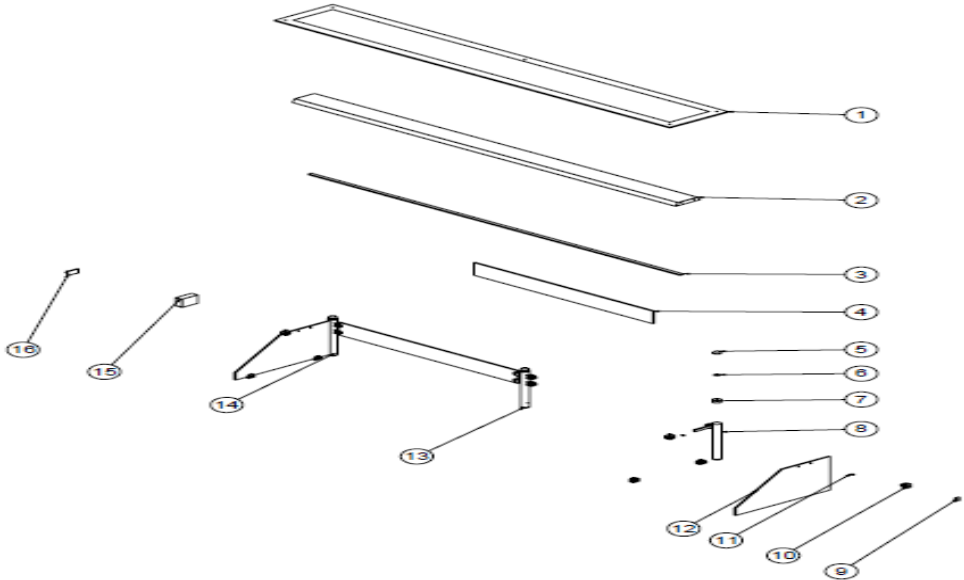
## G SPARE PART LIST- EXPLODING DRAWINGS



PRODUCT CODE: EMP.BSS.80.USC.T		
NO	PRODUCT NAME	P.CODE
1	TOP GLASS (2550x375x10 mm)	M.CAM-ERK-054
2	LAMP SHEET	YSC-ERK.BSS8-LZ-0002
3	LED	M.ELK-LED-004
4	INTERMEDIATE GLASS (2470*260*10MM)	M.CAM-ERK-056
5	WINDSCREEN (1157*400*8MM)	M.CAM-ERK-055
6	MEDIUM SHELF LAMP SHEET	YSC-ERK.BSS8-LZ-0003
7	TOP GLASS HOLDER	M.ENJ-ERK-PLS-136
8	ORING (3x27)	M.CNT-ORG-010
9	DERLIN	M.MUH-039
10	PIPE Ø42	YBR-ERK.BEH-KS-0001
11	PLUG	M.AKS-GNL-005
12	SUCTION CUPS	ERK.M.AKS-GNL-008
13	SHELF LAMP SHEET RIGHT	YSC-ERK.BSS2-LZ-0037
14	SHELF HOLDER	ERK.M.AKS-GNL-011
15	SHELF HOLDER	M.AKS-GNL-006
16	PIPE Ø42	YBR-ERK.BEH-KS-0005
17	PIPE Ø42	YBR-ERK.BEH-KS-0002
18	SIDE GLASS (610*400)	M.CAM-ERK-019
19	LAMP SHEET LEFT	YSC-ERK.BSS2-LZ-0038
20	TERMINAL	M.ELK-KLM-019
21	POWER SOURCE	M.ELK-MUH-007

# COLD SERVICE UNITS (REFRIGERATED)

## G SPARE PART LIST- EXPLODING DRAWINGS

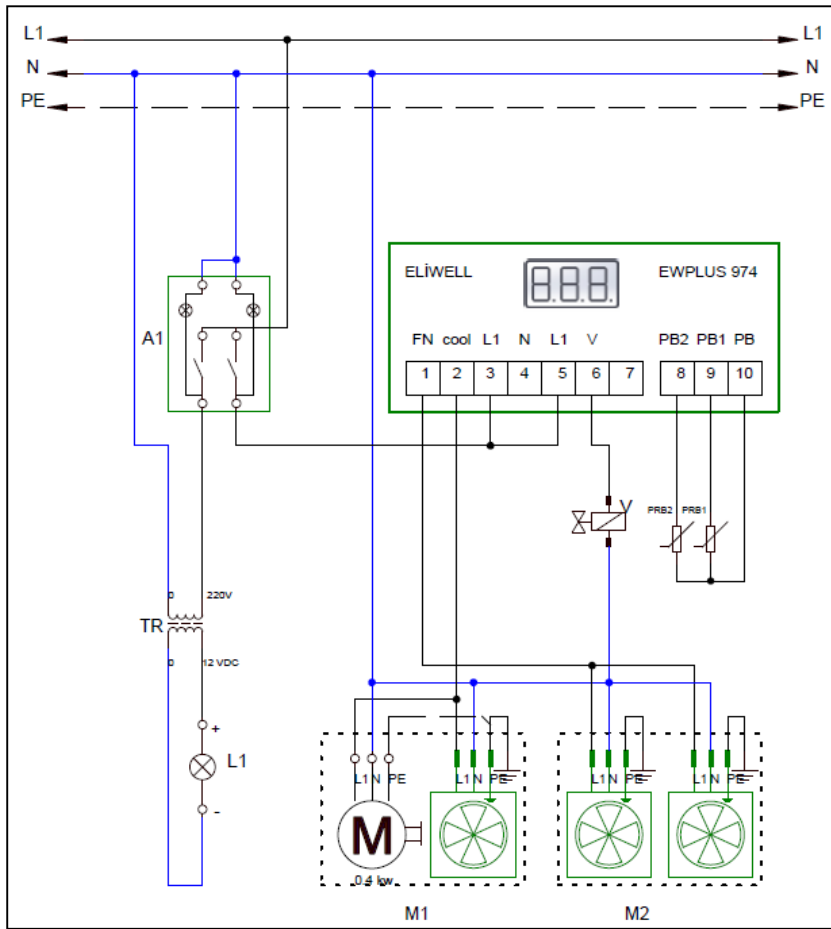


PRODUCT CODE: EMP.BSS.80.USC.Y		
NO	PRODUCT NAME	P.CODE
1	TOP GLASS (2550x375x10 mm)	M.CAM-ERK-054
2	LAMP SHEET	YSC-ERK.BSS8-LZ-0002
3	LED	M.ELK-LED-004
4	FRONT HALF GLASS (1157*150*8MM)	M.CAM-ERK-058
5	TOP GLASS HOLDER	M.ENJ-ERK-PLS-136
6	ORING (3x27)	M.CNT-ORG-010
7	DERLIN	M.MUH-039
8	PIPE Ø42	YBR-ERK.BEH-KS-0004
9	SHELF HOLDER	ERK.M.AKS-GNL-011
10	SHELF HOLDER	M.AKS-GNL-006
11	PLUG	M.AKS-GNL-005
12	SIDE GLASS (610*400*8MM)	M.CAM-ERK-045
13	PIPE Ø42	YBR-ERK.BEH-KS-0005
14	PIPE Ø42	YBR-ERK.BEH-KS-0003
15	POWER SOURCE	M.ELK-MUH-007
16	TERMINAL	M.ELK-KLM-019



# COLD SERVICE UNITS (REFRIGERATED)

## H ELECTRIC CIRCUIT SCHEMA

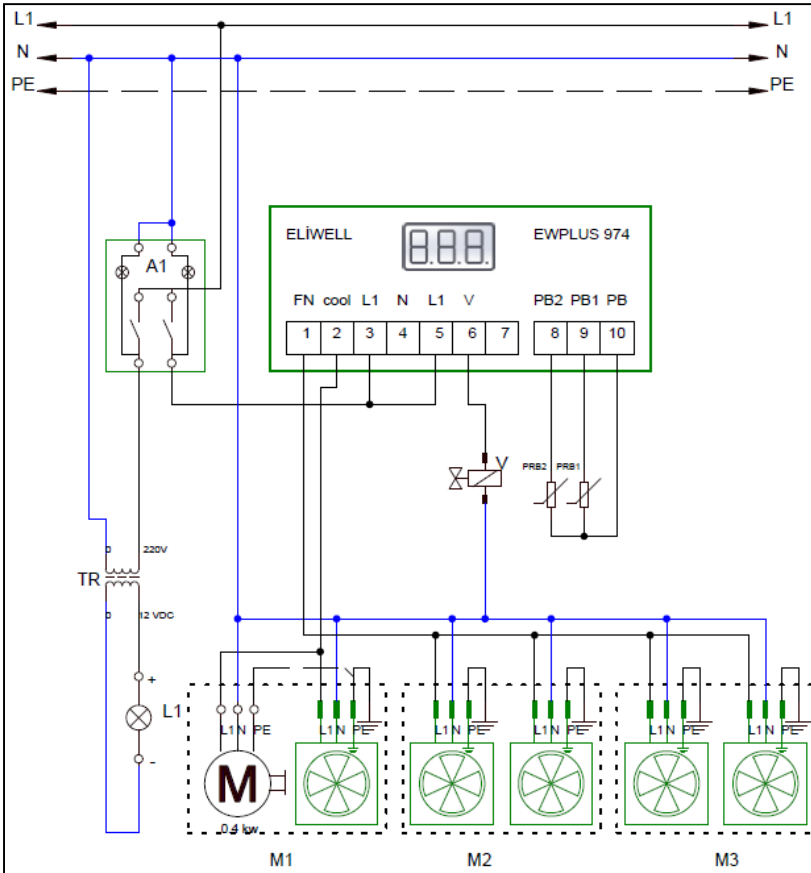


EMP.BSS.20.40.60

V	A1	M1	M2	T	L1	TR
Valve	Large lighted double 0-1 switch	Compressor and condenser fan	Refrigerator inner cooling fan	Digital indicator	Lighting Lamp	Lamp Transformer

# COLD SERVICE UNITS (REFRIGERATED)

## H ELECTRIC CIRCUIT SCHEMA



EMP.BSS.80

V	A1	M1	M2-M3	T	L1	TR
Valve	Large lighted double 0-1 switch	Compressor and condenser fan	Refrigerator inner cooling fan	Digital indicator	Lighting Lamp	Lamp Transformer