



# COLD SERVICE UNITS

## CONTENTS

---

<b>A</b>	<b>GENERAL INFORMATION .....</b>	<b>Page 2</b>
A1	PRODUCT DESCRIPTION .....	Page 3
A2	TECHNICAL INFORMATION .....	Page 3
A3	TRANSPORTATION .....	Page 4
A4	UNPACKING .....	Page 4
<b>B</b>	<b>INSTALLATION .....</b>	<b>Page 4</b>
<b>C</b>	<b>SAFETY INSTRUCTIONS .....</b>	<b>Page 5</b>
<b>D</b>	<b>OPERATION .....</b>	<b>Page 6</b>
<b>E</b>	<b>CLEANING &amp; MAINTENANCE.....</b>	<b>Page 7</b>
<b>F</b>	<b>TROUBLESHOOTING.....</b>	<b>Page 8</b>
<b>G</b>	<b>SPARE PART LIST- EXPLODING DRAWING.....</b>	<b>Page 9</b>
<b>H</b>	<b>ELECTRIC CIRCUIT SCHEMA .....</b>	<b>Page 27</b>

## A GENERAL INFORMATION

---

Before installing the appliance, read operation and maintenance instructions carefully. Wrong installation and part changing may damage the product or may cause injury on people. These are not in our company's responsibility to damage the appliance intentionally, negligence, detriments because of disobeying instructions and regulations, wrong connections. Unauthorized intervention to appliance invalidates the warranty.

1. This instruction manual should be kept in a safe place for future reference.
2. **Installation should be made in accordance with ordinances and security rules of that country by a qualified service personnel.**
3. This appliance has to be used by trained person.
4. Please turn off the appliance immediately in the event of malfunction or failure. The appliance should be repaired only by authorized service personnel. Please demand original spare part.

## COLD SERVICE UNITS

### A1 PRODUCT DESCRIPTION

\*The Professional Cold Service Units ,that provides high efficiency has been designed to be used in industrial kitchen.

Product Code	Dimensions (mm)	Weight (kg)	Packaging Dimensions (mm)
<b>EMP.BSSD.10S</b>	1500x790x850	86	1600x930x1220/1520
<b>EMP.BSSD.50S</b>	2000x790x850	100	2100x930x1220/1520
<b>EMP.BSSD.90S</b>	2550x790x850	120	2600x930x1220/1520

### A2 TECHNICAL INFORMATION

Product Code	Capacity	Power (KW)	Type Of Gas	Operating Voltage (V)	Cable (mm <sup>2</sup> )	Operating Range (°C)	Accessories
<b>EMP.BSSD.10S</b>	3x 1/1 GN	0,45	R290-A	220-230	3x1,5	0 / +5	* Wooden decor *Top shelf group *Tray sliding stand *Convex glass *Granite stand
<b>EMP.BSSD.50S</b>	4x 1/1 GN	0,45	R290-A	220-230	3x1,5	0 / +5	
<b>EMP.BSSD.90S</b>	5x1/1 GN	0,60	R290-A	220-230	3x1,5	0 / +5	

**A3 TRANSPORTATION**

---

\*This appliance can not be moved by hand from area to area. It must be moved on pallet with forklift truck.

**A4 UNPACKING**

---

\*Please unpack the package according to the security codes and ordinances of current country and get rid from the pack. Parts which contacts with food are produced by stainless steel. All plastic parts are marked by material's symbol.

\*Please check that all the parts of appliance had come completely and if they are damaged or not during the shipping.

**B INSTALLATION**

---

\*Please place the product to straight and sturdy ground, please take necessary steps against possibility of overturn.

\*Technician who will serve for installation and service for the appliance must be professional on this subject and must have installation and service licenses by the company.

\*Connection to Electric Power Supply must be done by authorized person.

\*Please be sure that the voltage connected to appliance must be equal with the voltage which is on appliance's label.



This appliance must be connected to an earthed outlet in accordance with safety rules and standard.

\*Appliance's earthing must be connected to earthing line on panel which is nearest to electric installation.











\*Connection to the main fuse and leak current fuse must be done in accordance with the current regulations.

\*If the 2 appliance will be placed adjacently, there must be at least 2 cm space between them. The Condensation is prevented .

## COLD SERVICE UNITS

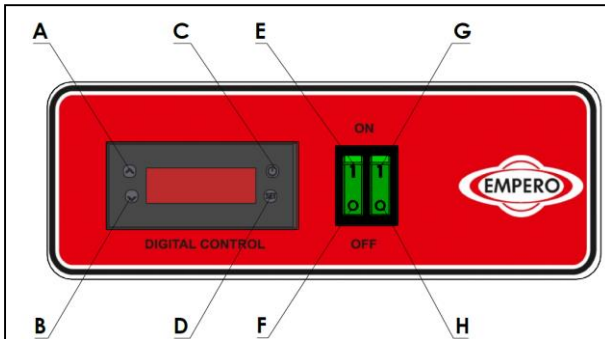
### C SAFETY INSTRUCTIONS

---

-  \*Do not use the appliance in insufficient lighted place.
-  \*Do not touch the moving attachments while the appliance operates.
-  \*Do not install the appliance in the presence of flammable or explosive materials.
-  \*Do not operate the appliance when the machine is empty.
-  \*Do not load so less or more than appliance's capacity.
-  \*Do not attempt to use the appliance without suitable protective equipments.
-  \*Because of any reason if there is a fire or flame flare where the appliance is used, turn off all gas valves and electric contactor switch quickly and use fire extinguisher. Never use water to extinguish the fire.
-  \*All the damages because of not having earthing connection will not be on warranty.
-  \*Prevent the appliance to take sunshine directly.
-  \*Do not place heavy objects on to the appliance.

## D OPERATION

### \*Control Panel;



- A : Degree increase
- B : Degree reduce
- C : Indicator ON/OFF
- D : Set approval button
- E : ON position
- F : OFF position
- G : Lamp ON position
- H : Lamp OFF position

### \*Operating;

- Clean the inner and outer surface of the appliance with warm cloth before first use. Then clean with wet cloth and dry. Wash the service containers and dry.
- Plug in the appliance.
- Activate ON/OFF button at control panel.
- Activate lamp ON/OFF button for the inner lighting of the refrigerator.
- Set the temperature of the appliance with up-down arrows.
- Operate the appliance for 12 hours when it is empty. at first use .Meanwhile do not open the lids.
- Insert the materials into the refrigerator and service containers.
- If the lids are opened often or left opened, these situations can effect the cooling of the products.
- When the appliance is not needed to be used, switch to (0) position and unplug the appliance.

## COLD SERVICE UNITS

### **E      CLEANING & MAINTENANCE**

---

#### ➤ **CLEANING AND MAINTENANCE AFTER EVERY USE**

- Always turn off the appliance and disconnect from the power supply before cleaning.
- Clean the outer surface of the appliance with moist cloth.
- Clean the inside of the appliance with moist cloth soapy cloth. Then clean it with wet cloth and dry. Wash the service units after every use.
- Pay attention the cleaning materials to be hygienic.
- Do not use abrasive cleaning chemicals as these can leave harmful residues.
- Do not clean the appliance by spraying water directly ,otherwise electric motor may get damaged.

#### ➤ **PERIODIC CLEANING AND MAINTENANCE**

- Maintenance should be done by qualified person.
- Clean the top shelf glass group with moist cloth according to frequency of use.
- Clean the upper lighting lamp with dry cloth in periodic times.
- Check the fan in periodic times and clean it.
- Clean the condenser at motor with a plastic rigid brush once in a month.

**F TROUBLESHOOTING**

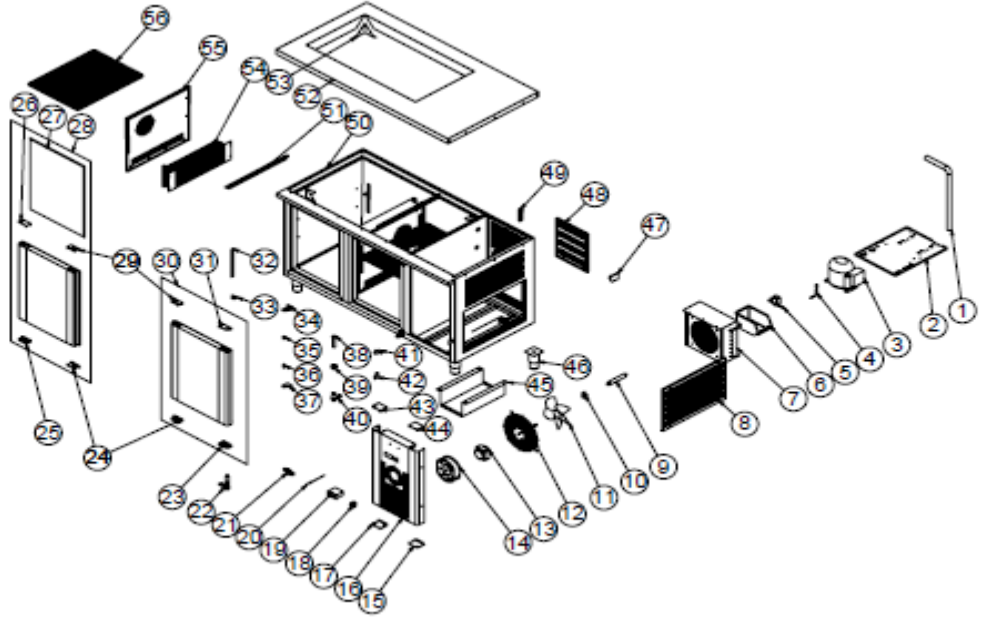
<b>THE APPLIANCE DOESN'T OPERATE</b>	<ol style="list-style-type: none"><li>1. Check if the appliance is plugged in.</li><li>2. Check the electrical connections and voltage.</li><li>3. Check if the fuse is on or off.</li></ol>
<b>THE APPLIANCE IS NOISY</b>	<ol style="list-style-type: none"><li>1. Check the motor.</li><li>2. If the connection pipes contact with compressor,remove it.</li></ol>
<b>THE APPLIANCE STOPPED</b>	<ol style="list-style-type: none"><li>1. The appliance can stop due to low voltage.In this situation check the voltage.</li><li>2. If there is any leakage current at electric connections,the appliance stops.In this situation call the authorized service.</li></ol>
<b>INNER TEMPERATURE IS TOO HIGH</b>	<ol style="list-style-type: none"><li>1. Clean the condenser.</li><li>2. Check the air conditioning.</li><li>3. If the hot material is placed to cabinet,take it off.</li><li>4. If the door is left opened,close it.</li></ol>
<ul style="list-style-type: none"><li>• If cooling is not done at suitable quality</li><li>• If any function of security doesn't work<ul style="list-style-type: none"><li>➤ Do not use the appliance.</li></ul></li></ul>	

**\*If these problems are still going on,contact with our authorized services.**



# COLD SERVICE UNITS

## G SPARE PART LIST- EXPLODING DRAWINGS



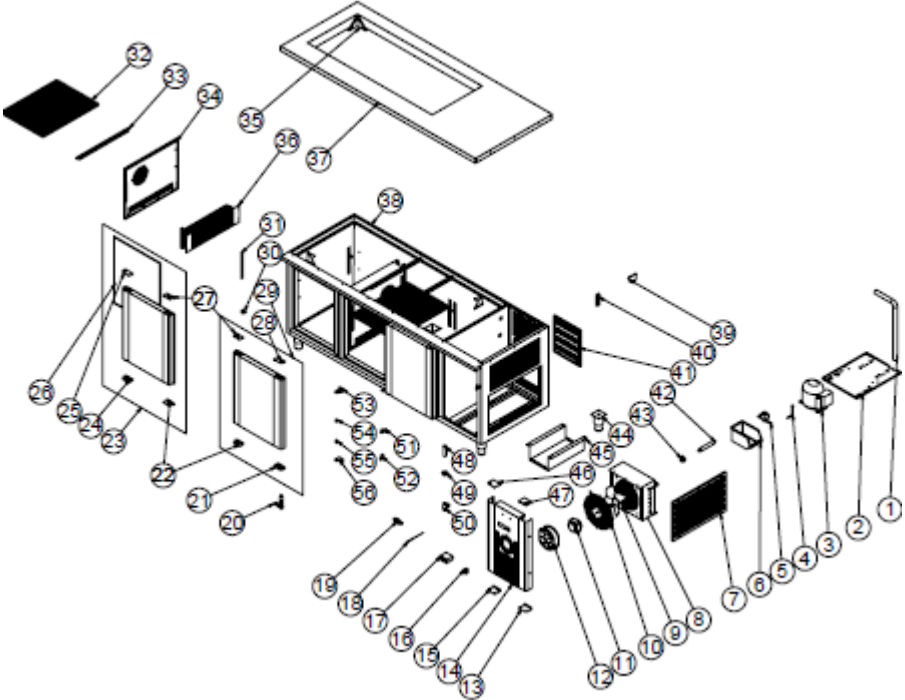
EMP.BSSD.10S

PRODUCT CODE: EMP.BSSD.10S		
NO	PRODUCT NAME	P.CODE
1	HOSE	HTS-HRT-001
2	GROUP SHEET	YSC-ERK.SA16-PN-0135
3	COMPRESSOR	M.SOG-KMS-022
4	SIBO	M.SOG-MUH-001
5	SELENOID VALF	ERK.M.ELK-SLN-VLF-001
6	TOOLS	ERK.M.MUH-003
7	1/2 CONDENSER	M.SOG-KDS-007
8	RIGHT OUTER SIDE COVER SHEET	YSC-ERK.BSS2-PN-0117
9	DRAYER	M.SOG-DRY-004
10	HANDCUFF	M.PLS-ERK-003
11	WING	M.ELK-HVL-FKN-002
12	FAN CIRCLE WIRE	ERK.M.MUH-001
13	FAN MOTOR	ERK.M.ELK-MTR-FMT-002

14	FAN	ERK.M.ELK-HVL-KFN-001
15	BOTTOM LEFT PLASTIC	M.PLS-ERK-032
16	ENGINE DOOR SHEET	YSC-ERK.1560-PN-0147
17	BOTTOM PLASTIC LEFT	M.ENJ-ERK-PLS-112
18	0-1 CONDITION GREEN	M.ELK-SLT-ANL-004
19	THERMOSTAT	M.ELK-EDM-DGT-039
20	PROP	ERK.M.ELK-EDM-DGT-012
21	HINGE	M.AKS-MNT-SC-007
22	HINGE BOTTOM PLASTIC RIGHT	M.ENJ-ERK-PLS-107
23	HAND PLASTIC BOTTOM	M.PLS-ERK-030
24	HINGE BOTTOM PLASTIC LEFT	M.ENJ-ERK-PLS-109
25	HINGE TOP PLASTIC LEFT	M.ENJ-ERK-PLS-110
26	GASKET ( 590 - 472)	M.CNT-ERK-001
27	COVER LEFT	ARA-ERK.1560-AKB TEZGAH KAPAK-430S
28	HAND PLASTIC TOP	M.PLS-ERK-029
29	COVER RIGHT	ARA-ERK.1560-TEZGAH KAPAK-SAG-430S
30	HINGE TOP PLASTIC RIGHT	M.ENJ-ERK-PLS-108
31	SHELF STRUT	ERK.M.MUH-002
32	SHELF NAIL	M.RAF-ERK-002
33	UPPER RIGHT HINGE SHEET	M.AKS-MNT-SC-001
34	BUSH PLASTIC	M.ENJ-ERK-PLS-022
35	PIN	M.AKS-MNT-SC-005
36	BOTTOM LEFT HINGE SHEET	M.AKS-MNT-SC-002
37	PIPE	M.ENJ-ERK-PLS-002
38	NUT	M.ENJ-ERK-PLS-024
39	EXPENSE PLASTIC	M.ENJ-ERK-PLS-030
40	HINGE	M.ENJ-ERK-PLS-010
41	HOLDER PLASTIC	M.ENJ-ERK-PLS-009
42	TOP PLASTIC LEFT	M.ENJ-ERK-PLS-111
43	TOP LEFT PLASTIC	M.PLS-ERK-031
44	DRAIN PAN	YSC-ERK.BSS2-PN-0105
45	FOOT	ERK.M.AKS-AYK-INX-001
46	TERMINAL	M.ELK-KLM-013
47	BACK COVER SHEET	YSC-ERK.BSS2-PN-0148
48	PROP PLASTIC	M.ENJ-ERK-PLS-017
49	CHASSIS	-
50	BATH TAP SHEET	YSC-ERK.BSS2-PN-0131
51	TOP TABLE SHEET	YSC-ERK.BSS2-LZ-0085
52	TABLE PARTS SHEET	YSC-ERK.BSS2-LZ-0065
53	EVAP	M.SOG-EVP-018
54	HOOD COVER SHEET	YSC-ERK.BSS2-PN-0171
55	44*58 WIRE SHELF	M.RAF-ERK-007
56	HOSE	HTS-HRT-001

# COLD SERVICE UNITS

## G SPARE PART LIST- EXPLODING DRAWINGS



EMP.BSSD.50S

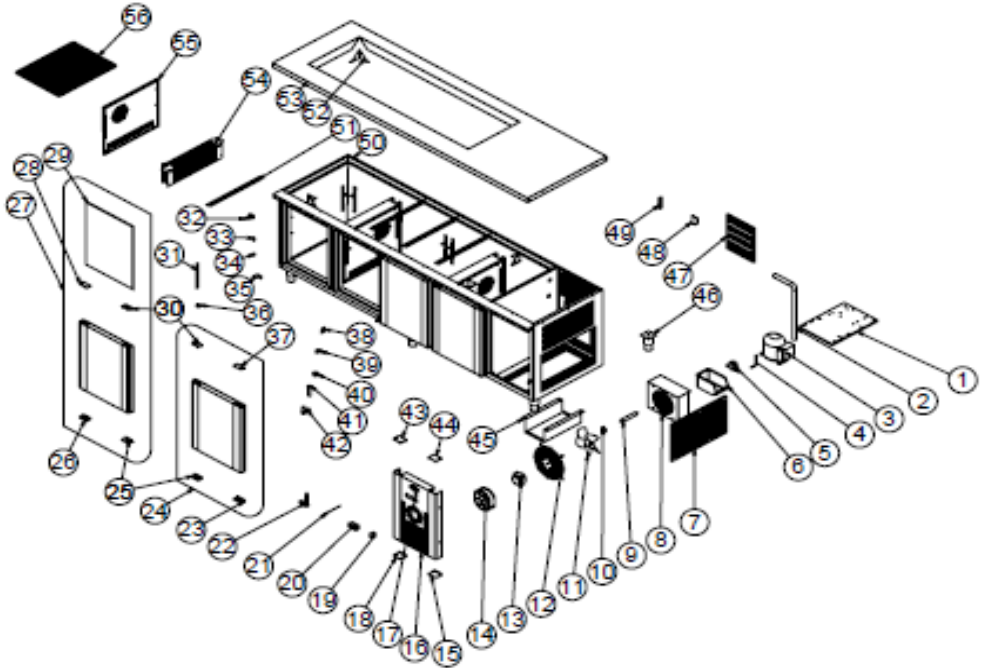
PRODUCT CODE: EMP.BSSD.50S		
NO	PRODUCT NAME	P.CODE
1	HOSE	HTS-HRT-001
2	GROUP SHEET	YSC-ERK.SA16-PN-0135
3	COMPRESSOR	M.SOG-KMS-022
4	SIBO	M.SOG-MUH-001
5	SELENOID VALF	ERK.M.ELK-SLN-VLF-001
6	TOOLS	ERK.M.MUH-003
7	RIGHT OUTER SIDE COVER SHEET	YSC-ERK.BSS2-PN-0117
8	1/2 CONDENSER	M.SOG-KDS-007
9	WING	M.ELK-HVL-FKN-002
10	FAN CIRCLE WIRE	ERK.M.MUH-001
11	FAN MOTOR	ERK.M.ELK-MTR-FMT-002
12	FAN	ERK.M.ELK-HVL-KFN-001
13	BOTTOM LEFT PLASTIC	M.PLS-ERK-032

## COLD SERVICE UNITS

14	ENGINE DOOR SHEET	YSC-ERK.1560-PN-0147
15	BOTTOM PLASTIC LEFT	M.ENJ-ERK-PLS-112
16	0-1 CONDITION GREEN	M.ELK-SLT-ANL-004
17	THERMOSTAT	M.ELK-EDM-DGT-039
18	PROP	ERK.M.ELK-EDM-DGT-012
19	HINGE	M.AKS-MNT-SC-007
20	HINGE BOTTOM PLASTIC RIGHT	M.ENJ-ERK-PLS-107
21	HAND PLASTIC BOTTOM	M.PLS-ERK-030
22	COVER LEFT	ARA-ERK.1560-AKB TEZGAH KAPAK-
23	HINGE BOTTOM PLASTIC LEFT	M.ENJ-ERK-PLS-109
24	HINGE TOP PLASTIC LEFT	M.ENJ-ERK-PLS-110
25	GASKET ( 590 - 472)	M.CNT-ERK-001
26	HAND PLASTIC TOP	M.PLS-ERK-029
27	HINGE TOP PLASTIC RIGHT	M.ENJ-ERK-PLS-108
28	COVER RIGHT	ARA-ERK.1560-TEZGAH KAPAK-SAG-
29	SHELF NAIL	M.RAF-ERK-002
30	SHELF STRUT	ERK.M.MUH-002
31	44*58 WIRE SHELF	M.RAF-ERK-007
32	BATH TAP SHEET	YSC-ERK.BSS2-PN-0131
33	HOOD COVER SHEET	YSC-ERK.BSS2-PN-0171
34	TABLE PARTS SHEET	YSC-ERK.BSS2-LZ-0065
35	EVAP	M.SOG-EVP-018
36	TOP TABLE SHEET	YSC-ERK.BSSD-LZ-0005
37	CHASSIS	-
38	TERMINAL	M.ELK-KLM-013
39	PROP PLASTIC	M.ENJ-ERK-PLS-017
40	BACK COVER SHEET	YSC-ERK.BSS2-PN-0148
41	DRAYER	M.SOG-DRY-004
42	HANDCUFF	M.PLS-ERK-003
43	FOOT	ERK.M.AKS-AYK-INX-001
44	DRAIN PAN	YSC-ERK.BSS2-PN-0105
45	TOP PLASTIC LEFT	M.ENJ-ERK-PLS-111
46	TOP LEFT PLASTIC	M.PLS-ERK-031
47	PIPE	M.ENJ-ERK-PLS-002
48	NUT	M.ENJ-ERK-PLS-024
49	EXPENSE PLASTIC	M.ENJ-ERK-PLS-030
50	HINGE	M.ENJ-ERK-PLS-010
51	HOLDER PLASTIC	M.ENJ-ERK-PLS-009
52	UPPER RIGHT HINGE SHEET	M.AKS-MNT-SC-001
53	BUSH PLASTIC	M.ENJ-ERK-PLS-022
54	PIN	M.AKS-MNT-SC-005
55	BOTTOM LEFT HINGE SHEET	M.AKS-MNT-SC-002
56	HOSE	HTS-HRT-001

# COLD SERVICE UNITS

## G SPARE PART LIST- EXPLODING DRAWINGS



EMP.BSSD.90S

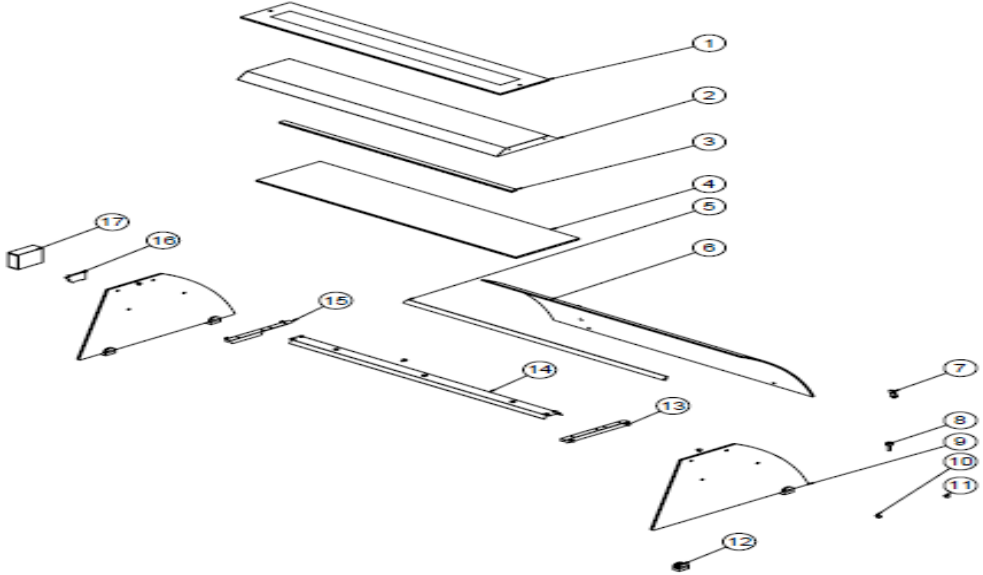
PRODUCT CODE: EMP.BSSD.90S		
NO	PRODUCT NAME	P.CODE
1	HOSE	HTS-HRT-001
2	GROUP SHEET	YSC-ERK.SA16-PN-0135
3	COMPRESSOR	M.SOG-KMS-035
4	SIBO	M.SOG-MUH-001
5	SELENOİD VALF	ERK.M.ELK-SLN-VLF-001
6	TOOLS	ERK.M.MUH-003
7	RIGHT OUTER SIDE COVER SHEET	YSC-ERK.BSS2-PN-0117
8	CONDENSER POSITIVE (+)	M.SOG-KDS-032
9	WING	M.ELK-HVL-FKN-002
10	FAN CIRCLE WIRE	ERK.M.MUH-001
11	FAN MOTOR	ERK.M.ELK-MTR-FMT-002
12	FAN	ERK.M.ELK-HVL-KFN-001
13	BOTTOM LEFT PLASTIC	M.PLS-ERK-032

## COLD SERVICE UNITS

14	ENGINE GLASS DOOR SHEET	YSC-ERK.2560-PN-0080
15	BOTTOM PLASTIC LEFT	M.ENJ-ERK-PLS-112
16	0-1 CONDITION GREEN	M.ELK-SLT-ANL-004
17	THERMOSTAT	M.ELK-EDM-DGT-039
18	PROP	ERK.M.ELK-EDM-DGT-012
19	HINGE	M.AKS-MNT-SC-007
20	HINGE BOTTOM PLASTIC RIGHT	M.ENJ-ERK-PLS-107
21	HAND PLASTIC BOTTOM	M.PLS-ERK-030
22	COVER LEFT	ARA-ERK.1560-AKB TEZGAH KAPAK-430S
23	HINGE BOTTOM PLASTIC LEFT	M.ENJ-ERK-PLS-109
24	HINGE TOP PLASTIC LEFT	M.ENJ-ERK-PLS-110
25	GASKET ( 590 - 472)	M.CNT-ERK-001
26	HAND PLASTIC TOP	M.PLS-ERK-029
27	HINGE TOP PLASTIC RIGHT	M.ENJ-ERK-PLS-108
28	COVER RIGHT	ARA-ERK.1560-TEZGAH KAPAK-SAG-430S
29	SHELF NAIL	M.RAF-ERK-002
30	SHELF STRUT	ERK.M.MUH-002
31	44*58 WIRE SHELF	M.RAF-ERK-007
32	BATH TAP SHEET	YSC-ERK.BSS2-PN-0131
33	HOOD COVER SHEET	YSC-ERK.BSS2-PN-0171
34	TABLE PARTS SHEET	YSC-ERK.BSS2-LZ-0065
35	EVAP	M.SOG-EVP-018
36	TOP TABLE SHEET	YSC-ERK.BSS2-LZ-0003
37	CHASSIS	-
38	TERMINAL	M.ELK-KLM-013
39	PROP PLASTIC	M.ENJ-ERK-PLS-017
40	BACK COVER SHEET	YSC-ERK.BSS2-PN-0148
41	DRAYER	ERK.M.SOG-DRY-001
42	HANDCUFF	M.PLS-ERK-007
43	FOOT	ERK.M.AKS-AYK-INX-001
44	DRAIN PAN	YSC-ERK.BSS2-PN-0105
45	TOP PLASTIC LEFT	M.ENJ-ERK-PLS-111
46	TOP LEFT PLASTIC	M.PLS-ERK-031
47	PIPE	M.ENJ-ERK-PLS-002
48	NUT	M.ENJ-ERK-PLS-024
49	EXPENSE PLASTIC	M.ENJ-ERK-PLS-030
50	HINGE	M.ENJ-ERK-PLS-010
51	HOLDER PLASTIC	M.ENJ-ERK-PLS-009
52	UPPER RIGHT HINGE SHEET	M.AKS-MNT-SC-001
53	BUSH PLASTIC	M.ENJ-ERK-PLS-022
54	PIN	M.AKS-MNT-SC-005
55	BOTTOM LEFT HINGE SHEET	M.AKS-MNT-SC-002
56	HOSE	HTS-HRT-001

# COLD SERVICE UNITS

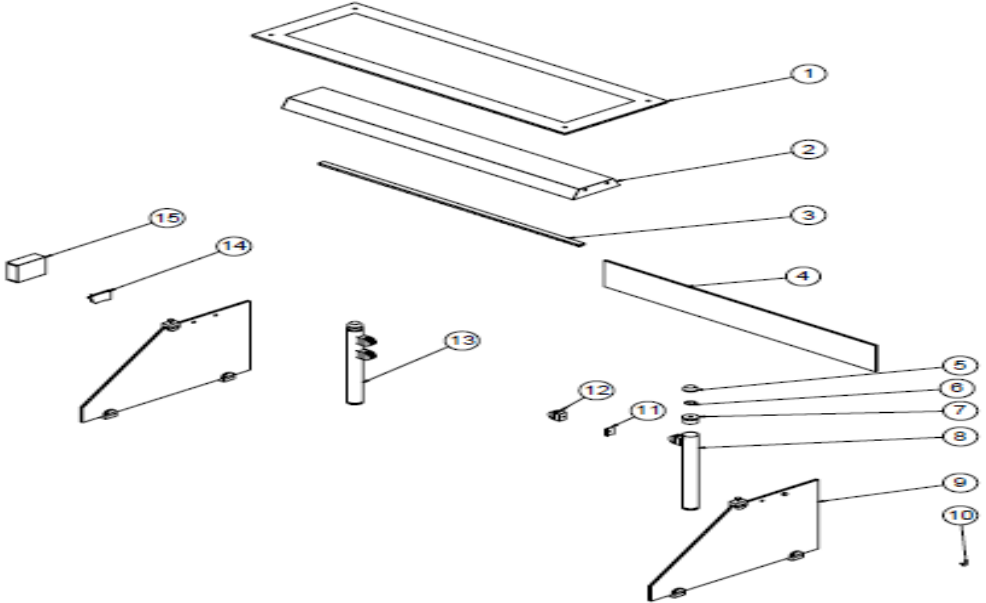
## G SPARE PART LIST- EXPLODING DRAWINGS



PRODUCT CODE: EMP.BSSD.10.BC.T

NO	PRODUCT NAME	P.CODE
1	TOP GLASS (1060*200*10MM)	M.CAM-ERK-BC-040
2	LAMP SHEET	YSC-ERK.BSSD-LZ-0001
3	LED	M.ELK-LED-009
4	INTERMEDIATE GLASS (1060*260*10MM)	M.CAM-ERK-084
5	HANDLE PROFILE	HPR-ALM-OZL-004
6	WINDSCREEN (1060*519*6MM)	M.CAM-ERK-BC-039
7	HINGE TOP	YTL-ERK.BSS-KS-0001
8	HINGE BOTTOM	YTL-ERK.BSS-KS-0002
9	SIDE GLASS (640*426*8MM)	M.CAM-ERK-BC-001
10	SUCTION CUPS	ERK.M.AKS-GNL-008
11	PLUG	M.AKS-GNL-005
12	SHELF HOLDER	M.AKS-GNL-006
13	SHELF LAMP SHEET RIGHT	YSC-ERK.BSS2-LZ-0037
14	LAMP SHEET	YSC-ERK.BSS4-LZ-0004
15	LAMP SHEET LEFT	YSC-ERK.BSS2-LZ-0038
16	TERMINAL	M.ELK-KLM-019
17	POWER SOURCE	M.ELK-MUH-006

## G SPARE PART LIST- EXPLODING DRAWINGS

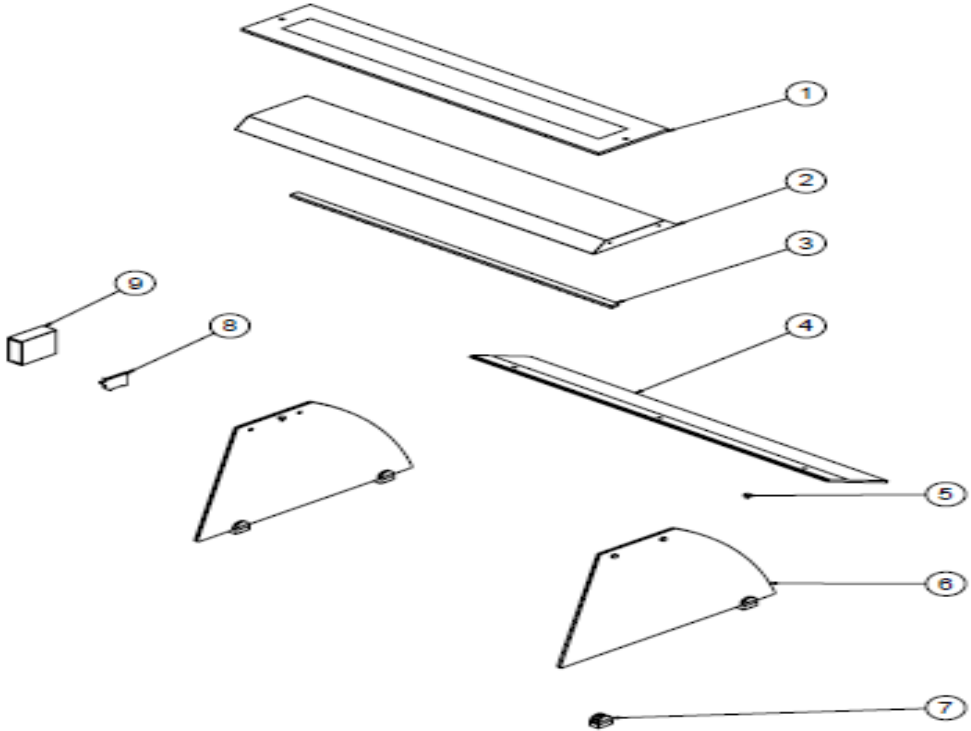


PRODUCT CODE: EMP.BSSD.10.USC.Y		
NO	PRODUCT NAME	P.CODE
1	TOP GLASS (1140*375*10MM)	M.CAM-ERK-086
2	UPPER SHELF LAMP	YSC-ERK.BSS4-LZ-0003
3	LED	M.ELK-LED-009
4	WINDSCREEN (990*150*8MM)	M.CAM-ERK-DUZ-011
5	TOP GLASS HOLDER	M.ENJ-ERK-PLS-136
6	ORING (3x27)	M.CNT-ORG-010
7	DERLIN	M.MUH-039
8	PIPE Ø42	YBR-ERK.BEH-KS-0004
9	SIDE GLASS (610*400*8MM)	M.CAM-ERK-045
10	PLUG	M.AKS-GNL-005
11	SHELF HOLDER	ERK.M.AKS-GNL-011
12	SHELF HOLDER	M.AKS-GNL-006
13	PIPE Ø42	YBR-ERK.BEH-KS-0003
14	TERMINAL	M.ELK-KLM-019
15	POWER SOURCE	M.ELK-MUH-006



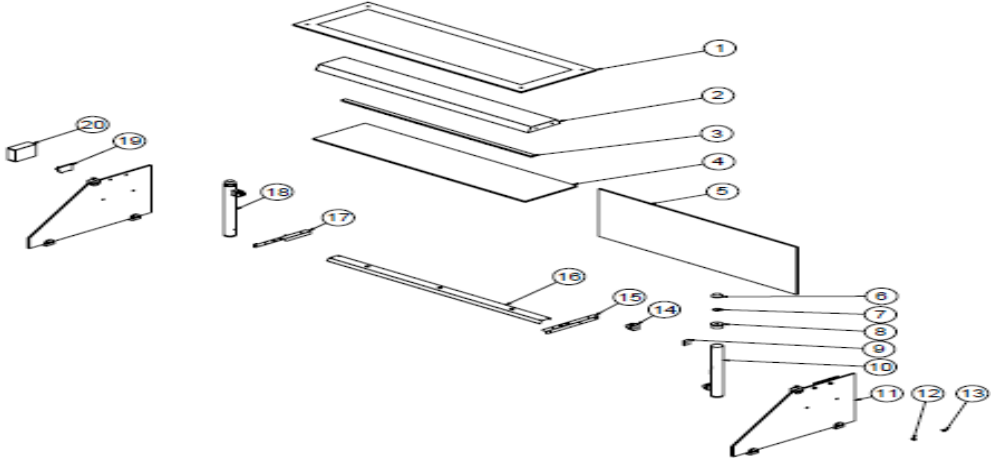
# COLD SERVICE UNITS

## G SPARE PART LIST- EXPLODING DRAWINGS



PRODUCT CODE: EMP.BSSD.10.BC.Y		
NO	PRODUCT NAME	P.CODE
1	TOP GLASS (1060*205*10MM)	M.CAM-ERK-BC-054
2	LAMP SHEET	YSC-ERK.BSSD-LZ-0001
3	LED	M.ELK-LED-009
4	WINDSCREEN (1060*200*6MM)	M.CAM-ERK-BC-055
5	PLUG	M.AKS-GNL-005
6	SIDE GLASS (640*426 8MM)	M.CAM-ERK-BC-027
7	SHELF HOLDER	M.AKS-GNL-006
8	TERMINAL	M.ELK-KLM-019
9	POWER SOURCE	M.ELK-MUH-006

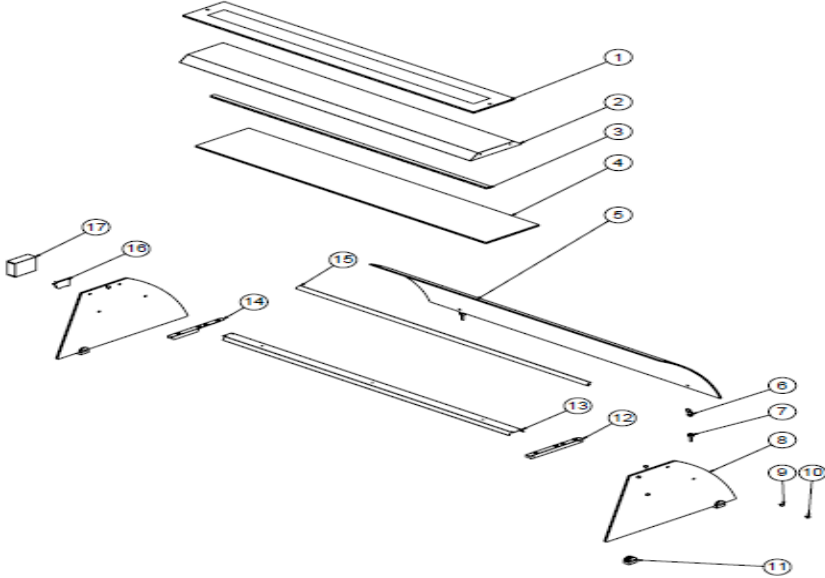
## G SPARE PART LIST- EXPLODING DRAWINGS



PRODUCT CODE: EMP.BSSD.10.USC.T		
NO	PRODUCT NAME	P.CODE
1	TOP GLASS (1140*375*10MM)	M.CAM-ERK-086
2	UPPER SHELF LAMP	YSC-ERK.BSS4-LZ-0003
3	LED	M.ELK-LED-009
4	INTERMEDIATE GLASS (1060*260*10MM)	M.CAM-ERK-084
5	WINDSCREEN (990*400*8MM)	M.CAM-ERK-085
6	TOP GLASS HOLDER	M.ENJ-ERK-PLS-136
7	ORING (3x27)	M.CNT-ORG-010
8	DERLIN	M.MUH-039
9	SHELF HOLDER	ERK.M.AKS-GNL-011
10	PIPE Ø42	YBR-ERK.BEH-KS-0001
11	SIDE GLASS (610*400)	M.CAM-ERK-019
12	SUCTION CUPS	ERK.M.AKS-GNL-008
13	PLUG	M.AKS-GNL-005
14	SHELF HOLDER	M.AKS-GNL-006
15	SHELF LAMP SHEET RIGHT	YSC-ERK.BSS2-LZ-0037
16	LAMP SHEET	YSC-ERK.BSS4-LZ-0004
17	LAMP SHEET LEFT	YSC-ERK.BSS2-LZ-0038
18	PIPE Ø42	YBR-ERK.BEH-KS-0002
19	TERMINAL	M.ELK-KLM-019
20	POWER SOURCE	M.ELK-MUH-006

# COLD SERVICE UNITS

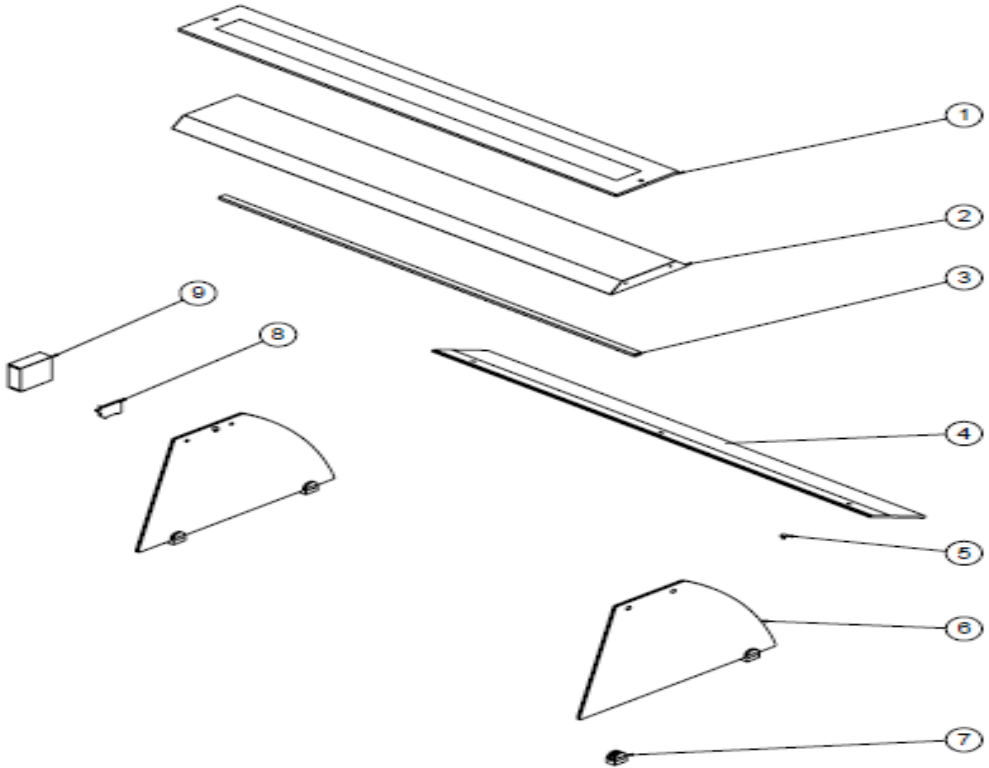
## G SPARE PART LIST- EXPLODING DRAWINGS



**PRODUCT CODE: EMP.BSSD.50.BC.T**

NO	PRODUCT NAME	P.CODE
1	TOP GLASS (1420x200x10 mm)	M.CAM-ERK-BC-008
2	LAMP SHEET	YSC-ERK.BSS4-LZ-0022
3	LED	M.ELK-LED-002
4	SIDE GLASS (1420*260)	M.CAM-ERK-025
5	WINDSCREEN (1420*519*6MM)	M.CAM-ERK-BC-009
6	HINGE TOP	YTL-ERK.BSS-KS-0001
7	HINGE BOTTOM	YTL-ERK.BSS-KS-0002
8	SIDE GLASS (640*426*8MM)	M.CAM-ERK-BC-001
9	SUCTION CUPS	ERK.M.AKS-GNL-008
10	PLUG	M.AKS-GNL-005
11	SHELF HOLDER	M.AKS-GNL-006
12	SHELF LAMP SHEET RIGHT	YSC-ERK.BSS2-LZ-0037
13	LAMP SHEET	YSC-ERK.BSS4-LZ-0020
14	LAMP SHEET LEFT	YSC-ERK.BSS2-LZ-0038
15	HANDLE PROFILE	HPR-ALM-OZL-004
16	TERMINAL	M.ELK-KLM-019
17	POWER SOURCE	M.ELK-MUH-006

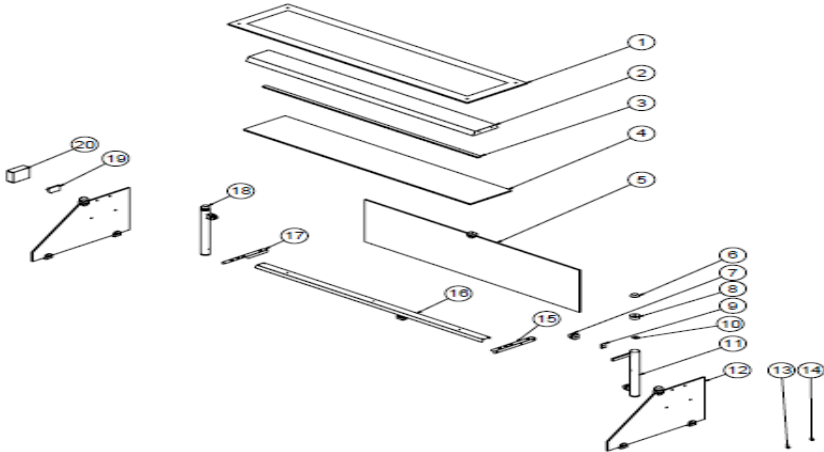
## G SPARE PART LIST- EXPLODING DRAWINGS



PRODUCT CODE: EMP.BSSD.50.BC.Y		
NO	PRODUCT NAME	P.CODE
1	TOP GLASS (1420x205x10 mm)	M.CAM-ERK-BC-025
2	LAMP SHEET	YSC-ERK.BSS4-LZ-0023
3	LED	M.ELK-LED-002
4	WINDSCREEN (1420*200*8 MM )	M.CAM-ERK-BC-053
5	PLUG	M.AKS-GNL-005
6	SIDE GLASS (640*426 8MM)	M.CAM-ERK-BC-027
7	SHELF HOLDER	M.AKS-GNL-006
8	TERMINAL	M.ELK-KLM-019
9	POWER SOURCE	M.ELK-MUH-006

# COLD SERVICE UNITS

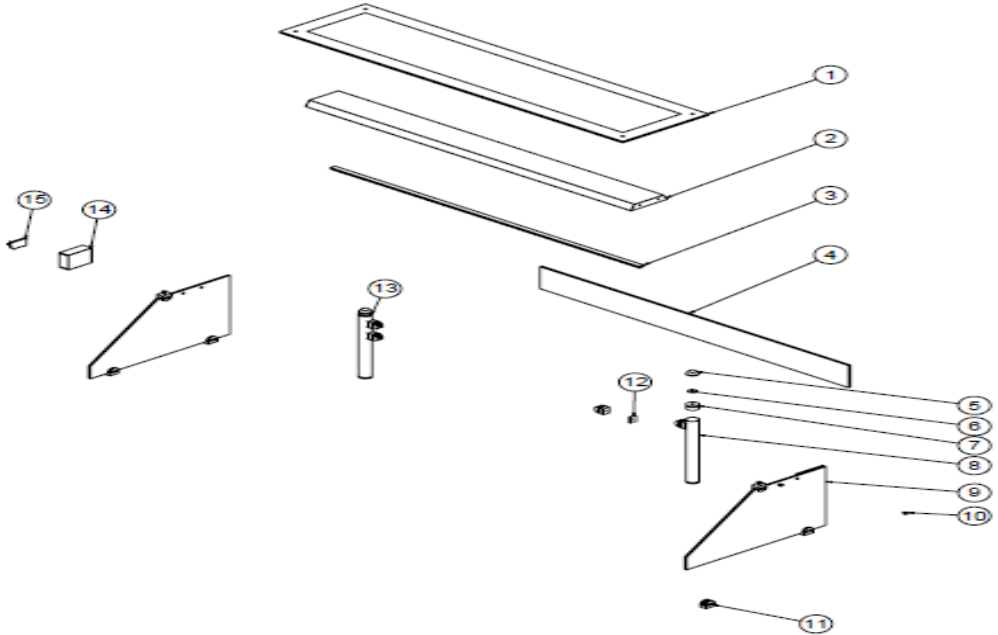
## G SPARE PART LIST- EXPLODING DRAWINGS



**PRODUCT CODE: EMP.BSSD.50.USC.T**

NO	PRODUCT NAME	P.CODE
1	TOP GLASS (1500*375)	M.CAM-ERK-023
2	LAMP SHEET	YSC-ERK.BSS4-LZ-0021
3	LED	M.ELK-LED-002
4	SIDE GLASS (1420*260)	M.CAM-ERK-025
5	WINDSCREEN (1348*400)	M.CAM-ERK-024
6	TOP GLASS HOLDER	M.ENJ-ERK-PLS-136
7	SHELF HOLDER	M.AKS-GNL-006
8	DERLIN	M.MUH-039
9	SHELF HOLDER	ERK.M.AKS-GNL-011
10	ORING (3x27)	M.CNT-ORG-010
11	PIPE Ø42	YBR-ERK.BEH-KS-0001
12	SIDE GLASS (610*400)	M.CAM-ERK-019
13	PLUG	M.AKS-GNL-005
14	SUCTION CUPS	ERK.M.AKS-GNL-008
15	SHELF LAMP SHEET RIGHT	YSC-ERK.BSS2-LZ-0037
16	LAMP SHEET	YSC-ERK.BSS4-LZ-0020
17	LAMP SHEET LEFT	YSC-ERK.BSS2-LZ-0038
18	PIPE Ø42	YBR-ERK.BEH-KS-0002
19	TERMINAL	M.ELK-KLM-019
20	POWER SOURCE	M.ELK-MUH-006

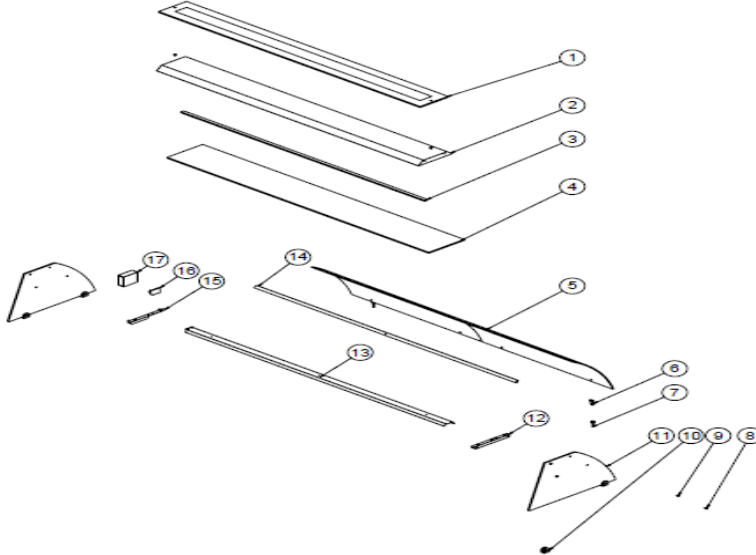
## G SPARE PART LIST- EXPLODING DRAWINGS



PRODUCT CODE: EMP.BSSD.50.USC.Y		
NO	PRODUCT NAME	P.CODE
1	TOP GLASS (1500*375)	M.CAM-ERK-023
2	LAMP SHEET	YSC-ERK.BSS4-LZ-0021
3	LED	M.ELK-LED-002
4	FRONT HALF GLASS (1348*150*8MM)	M.CAM-ERK-048
5	TOP GLASS HOLDER	M.ENJ-ERK-PLS-136
6	ORING (3x27)	M.CNT-ORG-010
7	DERLIN	M.MUH-039
8	PIPE Ø42	YBR-ERK.BEH-KS-0004
9	SIDE GLASS (610*400*8MM)	M.CAM-ERK-045
10	PLUG	M.AKS-GNL-005
11	SHELF HOLDER	M.AKS-GNL-006
12	SHELF HOLDER	ERK.M.AKS-GNL-011
13	PIPE Ø42	YBR-ERK.BEH-KS-0003
14	POWER SOURCE	M.ELK-MUH-006
15	TERMINAL	M.ELK-KLM-019

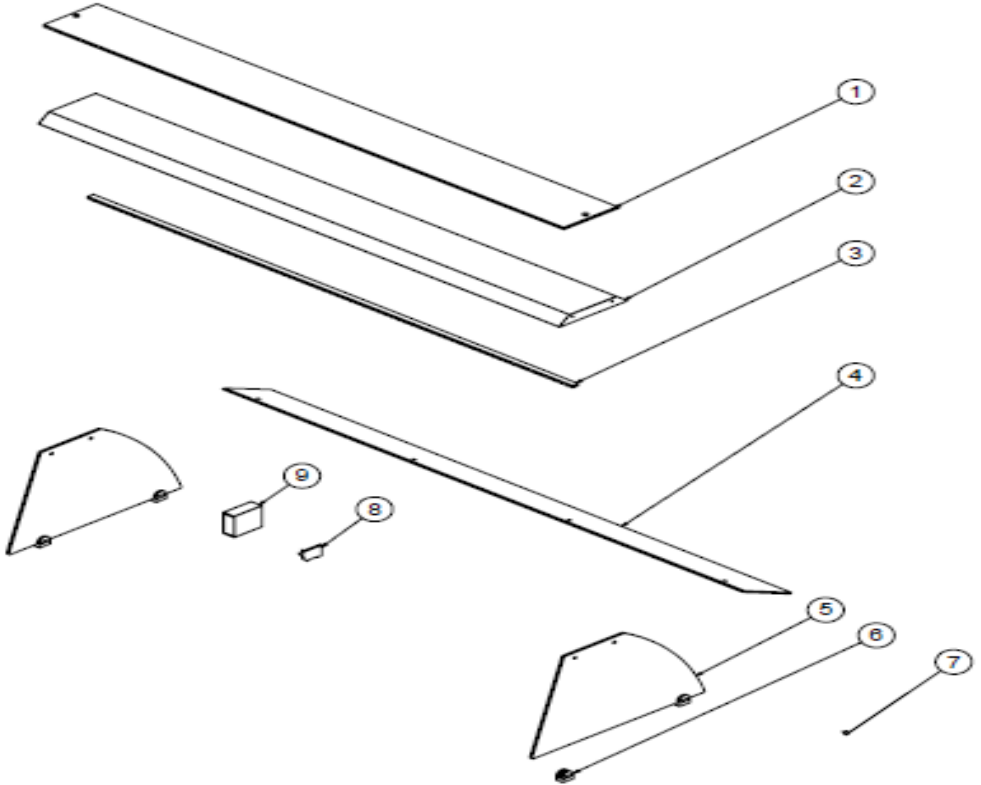
# COLD SERVICE UNITS

## G SPARE PART LIST- EXPLODING DRAWINGS



PRODUCT CODE: EMP.BSSD.90.BC.T		
NO	PRODUCT NAME	P.CODE
1	TOP GLASS ( 1920x205x10 mm )	M.CAM-ERK-BC-017
2	LAMP SHEET	YSC-ERK.BSS6-LZ-0004
3	LED	M.ELK-LED-003
4	INTERMEDIATE GLASS (1920*260*10MM)	M.CAM-ERK-053
5	WINDSCREEN (959*519*6MM)	M.CAM-ERK-BC-018
6	HINGE TOP	YTL-ERK.BSS-KS-0001
7	HINGE BOTTOM	YTL-ERK.BSS-KS-0002
8	SUCTION CUPS	ERK.M.AKS-GNL-008
9	PLUG	M.AKS-GNL-005
10	SHELF HOLDER	M.AKS-GNL-006
11	SIDE GLASS (640*426*8MM)	M.CAM-ERK-BC-001
12	SHELF LAMP SHEET RIGHT	YSC-ERK.BSS2-LZ-0037
13	LAMP SHEET	YSC-ERK.BSS6-LZ-0003
14	HANDLE PROFILE	HPR-ALM-OZL-004
15	LAMP SHEET LEFT	YSC-ERK.BSS2-LZ-0038
16	TERMINAL	M.ELK-KLM-019
17	POWER SOURCE	M.ELK-MUH-007

## G SPARE PART LIST- EXPLODING DRAWINGS

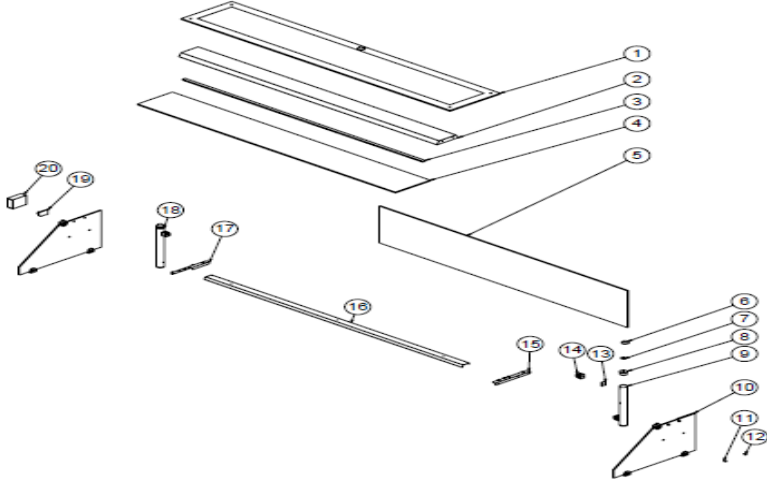


PRODUCT CODE: EMP.BSSD.90.BC.Y		
NO	PRODUCT NAME	P.CODE
1	TOP GLASS (1920*205*10MM)	M.CAM-ERK-BC-036
2	LAMP SHEET	YSC-ERK.BSS6-LZ-0005
3	LED	M.ELK-LED-003
4	WINDSCREEN (1920*200*8MM)	M.CAM-ERK-BC-035
5	SIDE GLASS (640*426 8MM)	M.CAM-ERK-BC-027
6	SHELF HOLDER	M.AKS-GNL-006
7	PLUG	M.AKS-GNL-005
8	TERMINAL	M.ELK-KLM-019
9	POWER SOURCE	M.ELK-MUH-007



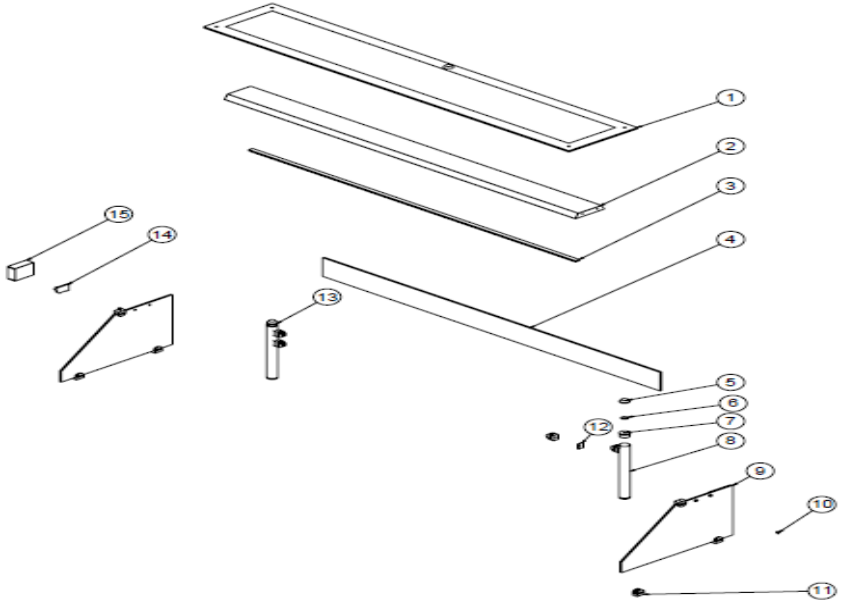
# COLD SERVICE UNITS

## G SPARE PART LIST- EXPLODING DRAWINGS



PRODUCT CODE: EMP.BSSD.90.USC.T		
NO	PRODUCT NAME	P.CODE
1	TOP GLASS ( 2000x375x10 mm )	M.CAM-ERK-051
2	LAMP SHEET	YSC-ERK.BSS6-LZ-0002
3	LED	M.ELK-LED-003
4	INTERMEDIATE GLASS (1920*260*10MM)	M.CAM-ERK-053
5	WINDSCREEN (1848*400*8MM)	M.CAM-ERK-052
6	TOP GLASS HOLDER	M.ENJ-ERK-PLS-136
7	ORING (3x27)	M.CNT-ORG-010
8	DERLIN	M.MUH-039
9	PIPE Ø42	YBR-ERK.BEH-KS-0001
10	SIDE GLASS (610*400)	M.CAM-ERK-019
11	SUCTION CUPS	ERK.M.AKS-GNL-008
12	PLUG	M.AKS-GNL-005
13	SHELF HOLDER	ERK.M.AKS-GNL-011
14	SHELF HOLDER	M.AKS-GNL-006
15	SHELF LAMP SHEET RIGHT	YSC-ERK.BSS2-LZ-0037
16	LAMP SHEET	YSC-ERK.BSS6-LZ-0003
17	LAMP SHEET LEFT	YSC-ERK.BSS2-LZ-0038
18	PIPE Ø42	YBR-ERK.BEH-KS-0002
19	TERMINAL	M.ELK-KLM-019
20	POWER SOURCE	M.ELK-MUH-007

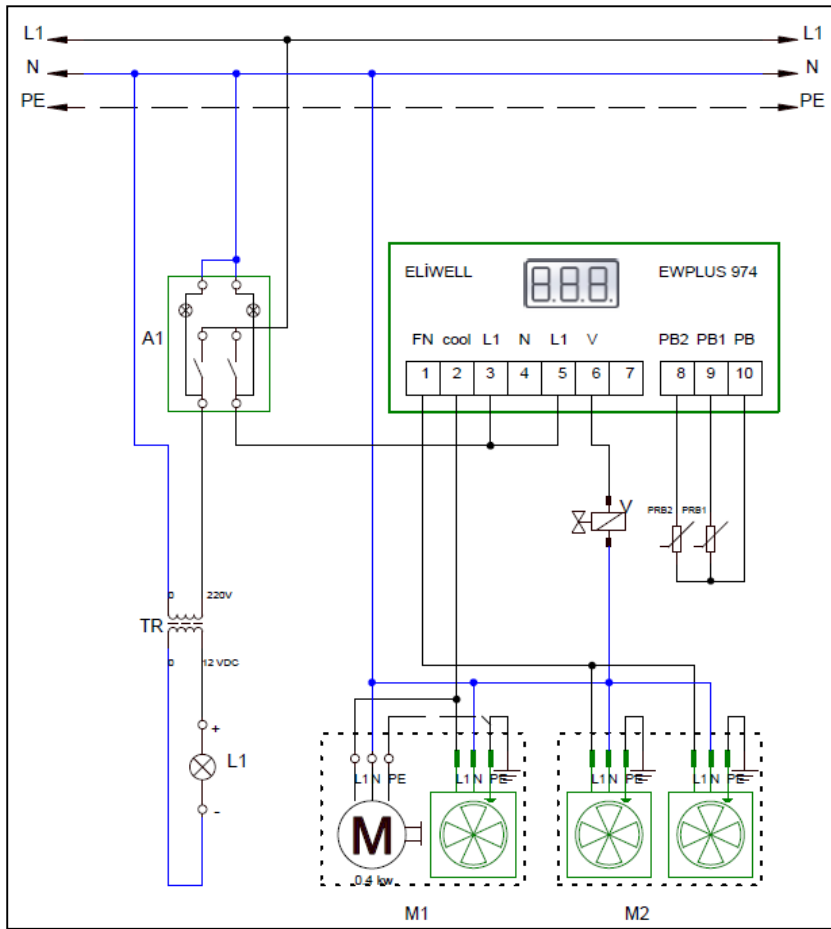
## G SPARE PART LIST- EXPLODING DRAWINGS



PRODUCT CODE: EMP.BSSD.90.USC.Y		
NO	PRODUCT NAME	P.CODE
1	TOP GLASS ( 2000x375x10 mm )	M.CAM-ERK-051
2	LAMP SHEET	YSC-ERK.BSS6-LZ-0002
3	LED	M.ELK-LED-003
4	FRONT HALF GLASS (1848*150*8MM)	M.CAM-ERK-057
5	TOP GLASS HOLDER	M.ENJ-ERK-PLS-136
6	ORING (3x27)	M.CNT-ORG-010
7	DERLIN	M.MUH-039
8	PIPE Ø42	YBR-ERK.BEH-KS-0004
9	SIDE GLASS (610*400*8MM)	M.CAM-ERK-045
10	PLUG	M.AKS-GNL-005
11	SHELF HOLDER	ERK.M.AKS-GNL-011
12	SHELF HOLDER	M.AKS-GNL-006
13	PIPE Ø42	YBR-ERK.BEH-KS-0003
14	TERMINAL	M.ELK-KLM-019
15	POWER SOURCE	M.ELK-MUH-006

# COLD SERVICE UNITS

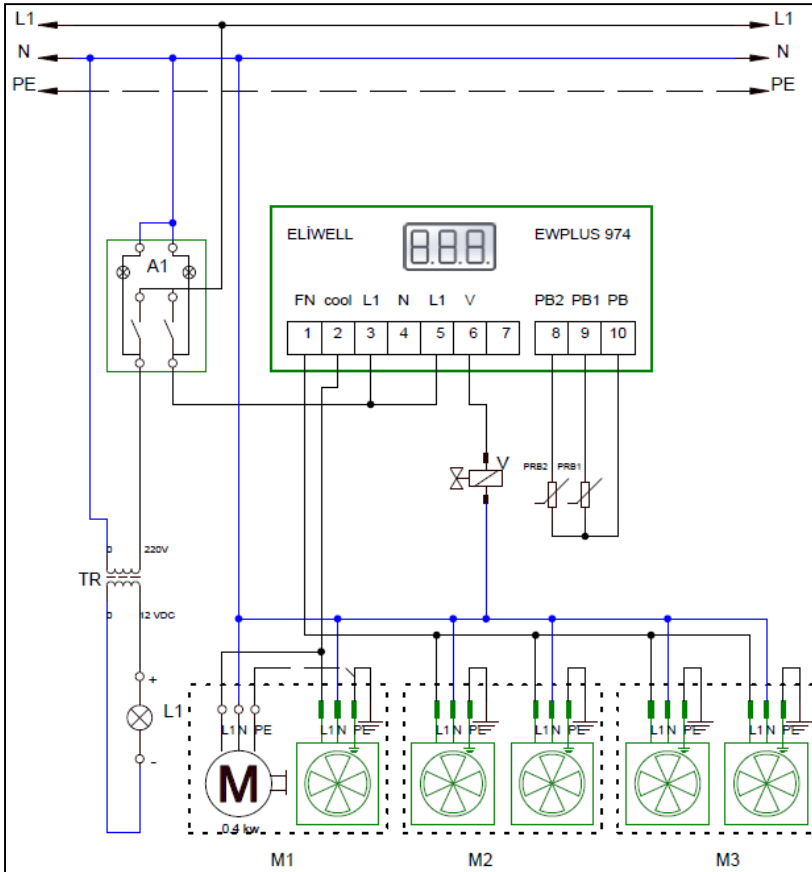
## H ELECTRIC CIRCUIT SCHEMA



EMP.BSSD.10S-50S

V	A1	M1	M2	T	L1	TR
Valve	Large lighted double 0-1 switch	Compressor and condenser fan	Refrigerator inner cooling fan	Digital indicator	Lighting Lamp	Lamp Transformer

## H ELECTRIC CIRCUIT SCHEMA



EMP.BSSD.90S

V	A1	M1	M2-M3	T	L1	TR
Valve	Large lighted double 0-1 switch	Compressor and condenser fan	Refrigerator inner cooling fan	Digital indicator	Lighting Lamp	Lamp Transformer